

Matriculation

Diversity Pipeline

Urban_Planning_and_Policy_MUPP [20FS1786MUPP]

Fall 2012 through Fall 2016

| Fall Semester Year | Applied | | | | | Admitted | | | | | Non-URM Admitted to Applied Yield % | URM Admitted to Applied Yield % | New Enrollment | | | | | Non-URM Enrolled to Admitted Yield % | URM Enrolled to Admitted Yield % | Total Enrollment | | | | |
|--------------------|-------------|---------------|--------------|-----------|--------------|-------------|---------------|--------------|-----------|--------------|-------------------------------------|---------------------------------|----------------|---------------|--------------|-----------|--------------|--------------------------------------|----------------------------------|------------------|---------------|--------------|-------------|--------------|
| | Grand Total | Non-URM Total | | URM Total | | Grand Total | Non-URM Total | | URM Total | | | | Grand Total | Non-URM Total | | URM Total | | | | Grand Total | Non-URM Total | | URM Total | |
| | | Count | % | Count | % | | Count | % | Count | % | | | | Count | % | Count | % | | | | Count | % | Count | % |
| | Count | % | Count | % | Count | % | Count | % | Count | % | | | Count | % | Count | % | Count | | | % | Count | % | | |
| 2012 | 243 | 212 | 87.2% | 31 | 12.8% | 193 | 171 | 88.6% | 22 | 11.4% | 80.7% | 71.0% | 79 | 66 | 83.5% | 13 | 16.5% | 38.6% | 59.1% | 180 | 145 | 80.6% | 35 | 19.4% |
| 2013 | 249 | 214 | 85.9% | 35 | 14.1% | 182 | 164 | 90.1% | 18 | 9.9% | 76.6% | 51.4% | 50 | 43 | 86.0% | 7 | 14.0% | 26.2% | 38.9% | 179 | 148 | 82.7% | 31 | 17.3% |
| 2014 | 220 | 182 | 82.7% | 38 | 17.3% | 172 | 149 | 86.6% | 23 | 13.4% | 81.9% | 60.5% | 50 | 44 | 88.0% | 6 | 12.0% | 29.5% | 26.1% | 153 | 126 | 82.4% | 27 | 17.6% |
| 2015 | 198 | 167 | 84.3% | 31 | 15.7% | 170 | 145 | 85.3% | 25 | 14.7% | 86.8% | 80.6% | 63 | 47 | 74.6% | 16 | 25.4% | 32.4% | 64.0% | 162 | 119 | 73.5% | 43 | 26.5% |
| 2016 | 171 | 137 | 80.1% | 34 | 19.9% | 138 | 110 | 79.7% | 28 | 20.3% | 80.3% | 82.4% | 50 | 36 | 72.0% | 14 | 28.0% | 32.7% | 50.0% | 149 | 102 | 68.5% | 47 | 31.5% |
| Average | 216 | 182 | 84.4% | 34 | 15.6% | 171 | 148 | 86.4% | 23 | 13.6% | 81.0% | 68.6% | 58 | 47 | 80.8% | 11 | 19.2% | 31.9% | 48.3% | 165 | 128 | 77.8% | 36.6 | 22.2% |

Note: URM stands for Under-Represented Minority and includes American Indian or Alaska Native; Black or African-American; Hispanic / Latino race/ethnicity groups

Applications, Admission, & New Enrollment Yields

by Race/Ethnicity & Gender

Urban_Planning_and_Policy_MUPP [20FS1786MUPP]

Fall 2012 through Fall 2016

| | Fall Semester Year | Total | Under Represented Minorities (URM) | | | | | | | | | | Race/Eth Not Reported | Male | Female | | | | | | | | | | | |
|----------|--------------------|-------|------------------------------------|---------|---------------------------|---------|-------------------|---------|-----------|---------|-------|---------|-----------------------|---------|--------|-------------------------------------|-------|---------|-------|-------------------|-------|---------------|-------|---------|-------|---------|
| | | | American Indian or Alaska Native | | Black or African American | | Hispanic / Latino | | URM Total | | Asian | | | | | Native Hawaiian or Pacific Islander | | White | | Two or More Races | | International | | | | |
| | | | Count | % Yield | Count | % Yield | Count | % Yield | Count | % Yield | Count | % Yield | Count | % Yield | Count | % Yield | Count | % Yield | Count | % Yield | Count | % Yield | Count | % Yield | Count | % Yield |
| Applied | 2012 | 243 | 1 | | 16 | | 14 | | 31 | | 12 | | 0 | | 152 | | 5 | | 37 | | 6 | | 123 | | 119 | |
| | 2013 | 249 | 0 | | 15 | | 20 | | 35 | | 15 | | 0 | | 133 | | 8 | | 42 | | 16 | | 118 | | 129 | |
| | 2014 | 220 | 0 | | 18 | | 20 | | 38 | | 6 | | 1 | | 121 | | 6 | | 35 | | 13 | | 109 | | 109 | |
| | 2015 | 198 | 0 | | 18 | | 13 | | 31 | | 10 | | 0 | | 104 | | 3 | | 47 | | 3 | | 105 | | 90 | |
| | 2016 | 171 | 0 | | 13 | | 21 | | 34 | | 5 | | 0 | | 78 | | 2 | | 47 | | 5 | | 74 | | 97 | |
| Admitted | 2012 | 193 | 79.4 | 0 | 0.0 | 11 | 68.8 | 11 | 78.6 | 22 | 71.0 | 12 | 100.0 | 0 | 0.0 | 129 | 84.9 | 5 | 100.0 | 21 | 56.8 | 4 | 100 | 81.3 | 93 | 78.2 |
| | 2013 | 182 | 73.1 | 0 | 0.0 | 5 | 33.3 | 13 | 65.0 | 18 | 51.4 | 12 | 80.0 | 0 | 0.0 | 110 | 82.7 | 6 | 75.0 | 25 | 59.5 | 11 | 82 | 69.5 | 99 | 76.7 |
| | 2014 | 172 | 78.2 | 0 | 0.0 | 7 | 38.9 | 16 | 80.0 | 23 | 60.5 | 4 | 66.7 | 1 | 100.0 | 102 | 84.3 | 5 | 83.3 | 25 | 71.4 | 12 | 85 | 78.0 | 85 | 78.0 |
| | 2015 | 170 | 85.9 | 0 | 0.0 | 15 | 83.3 | 10 | 76.9 | 25 | 80.6 | 9 | 90.0 | 0 | 0.0 | 96 | 92.3 | 2 | 66.7 | 35 | 74.5 | 3 | 89 | 84.8 | 79 | 87.8 |
| | 2016 | 138 | 80.7 | 0 | 0.0 | 10 | 76.9 | 18 | 85.7 | 28 | 82.4 | 4 | 80.0 | 0 | 0.0 | 70 | 89.7 | 2 | 100.0 | 30 | 63.8 | 4 | 62 | 83.8 | 76 | 78.4 |
| Enrolled | 2012 | 79 | 40.9 | 0 | 0.0 | 5 | 45.5 | 8 | 72.7 | 13 | 59.1 | 4 | 33.3 | 0 | 0.0 | 51 | 39.5 | 4 | 80.0 | 7 | 33.3 | 0 | 38 | 38.0 | 41 | 44.1 |
| | 2013 | 50 | 27.5 | 0 | 0.0 | 2 | 40.0 | 5 | 38.5 | 7 | 38.9 | 2 | 16.7 | 0 | 0.0 | 29 | 26.4 | 2 | 33.3 | 8 | 32.0 | 2 | 25 | 30.5 | 25 | 25.3 |
| | 2014 | 50 | 29.1 | 0 | 0.0 | 2 | 28.6 | 4 | 25.0 | 6 | 26.1 | 1 | 25.0 | 0 | 0.0 | 31 | 30.4 | 3 | 60.0 | 5 | 20.0 | 4 | 27 | 31.8 | 23 | 27.1 |
| | 2015 | 63 | 37.1 | 0 | 0.0 | 9 | 60.0 | 7 | 70.0 | 16 | 64.0 | 5 | 55.6 | 0 | 0.0 | 31 | 32.3 | 0 | 0.0 | 10 | 28.6 | 1 | 29 | 32.6 | 33 | 41.8 |
| | 2016 | 50 | 36.2 | 0 | 0.0 | 5 | 50.0 | 9 | 50.0 | 14 | 50.0 | 1 | 25.0 | 0 | 0.0 | 28 | 40.0 | 0 | 0.0 | 7 | 23.3 | 0 | 26 | 41.9 | 24 | 31.6 |

Notes:

- 1) URM stands for Under-Represented Minority and includes American Indian or Alaska Native; Black or African-American; Hispanic / Latino race/ethnicity groups
- 2) Unreported Gender identification is not shown; Male and Female total may not match Total
- 3) In rare situations, the "% Yield" columns may be greater than 100. There are three potential reasons for this:
 - a) Students that received Graduate College approved transfers may not have an admission record for the program that they enrolled into.
 - b) Students with a secondary curriculum enrollment may not have an admission record for that secondary program.
 - c) Students who were newly enrolled in the summer term prior to the fall were added to the fall new enrollment totals.

Applications, Admission, & New Enrollment Yields, cont. by Race/Ethnicity & Gender

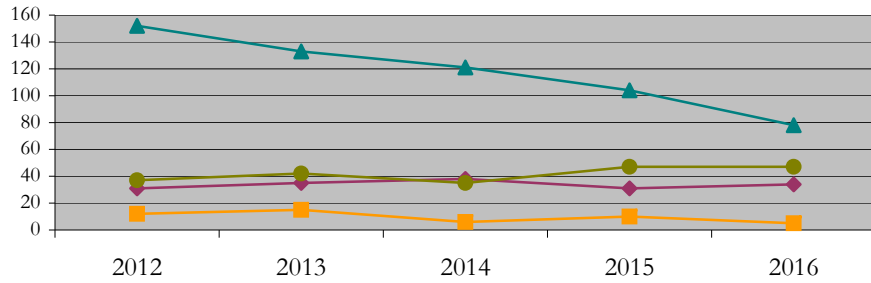
Urban_Planning_and_Policy_MUPP [20FS1786MUPP]

Fall 2012 through Fall 2016

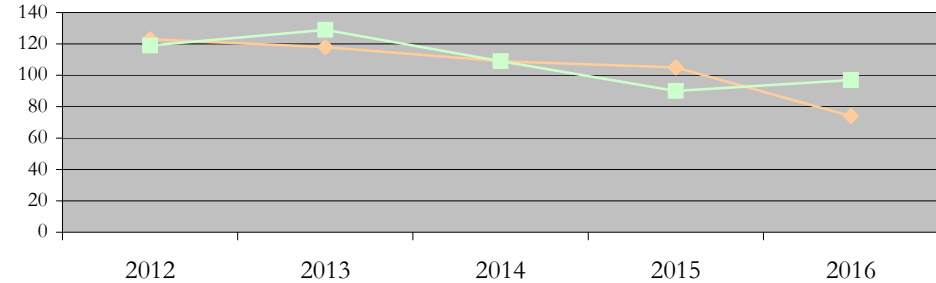
◆ URM Total ■ Asian ▲ White ● International

◆ Male ■ Female

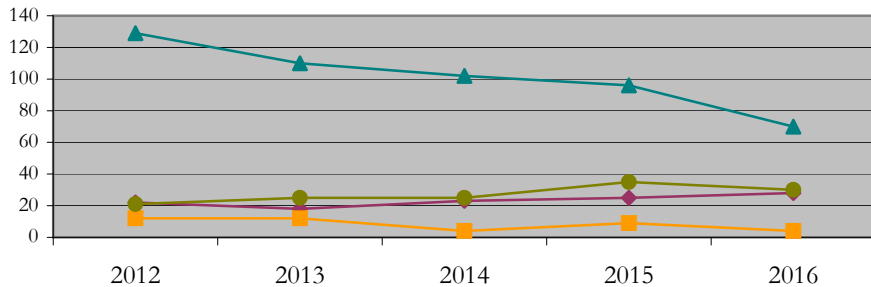
Applications by Race/Ethnicity



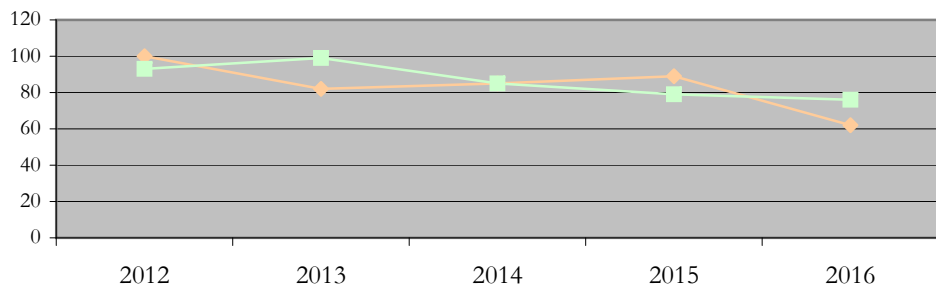
Applications by Gender



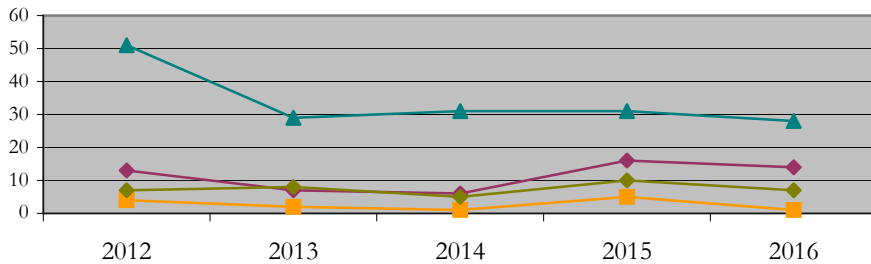
Admissions by Race/Ethnicity



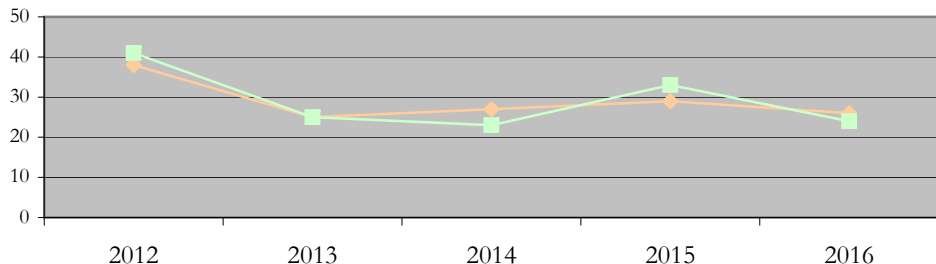
Admissions by Gender



New Enrollments by Race/Ethnicity



New Enrollments by Gender



Notes: 1) URM stands for Under-Represented Minority and includes American Indian or Alaska Native; Black or African-American; Hispanic / Latino race/ethnicity groups
2) Individual URM groups, Native Hawaiian Pacific Islander, Two or More Races, and Other race/ethnicity categories left off these charts due to relatively low numbers

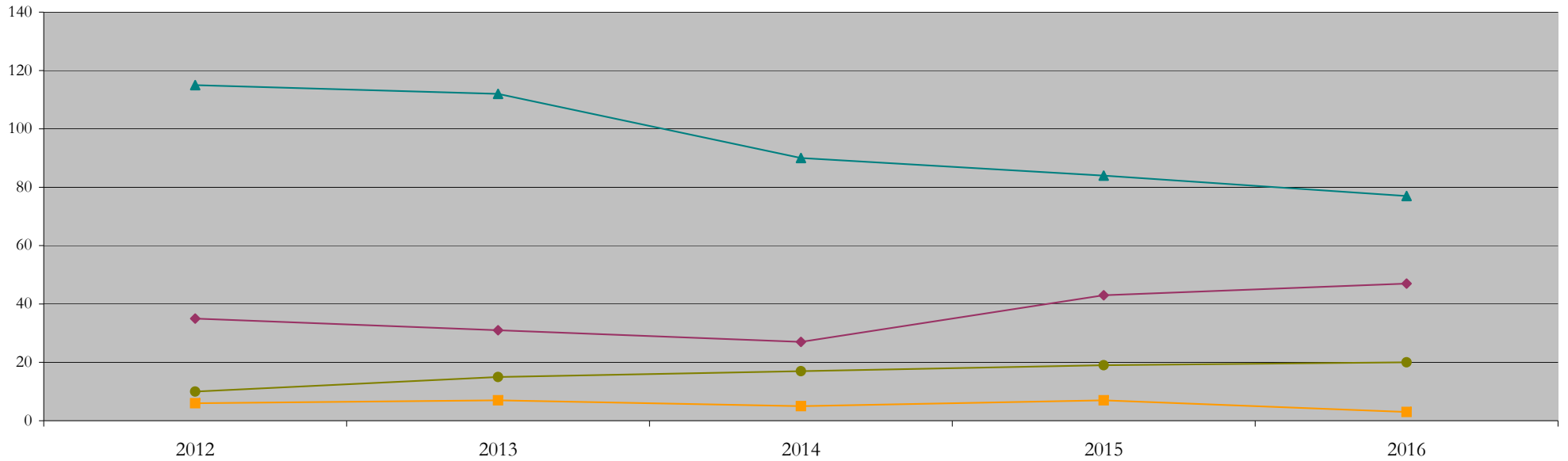
Total Enrollment (includes secondary curriculum)

by Race/Ethnicity

Urban_Planning_and_Policy_MUPP [20FS1786MUPP]

Fall 2012 through Fall 2016

| Fall Semester Year | Total | Under Represented Minorities (URM) | | | | | | | | | | | | | | | | | | |
|--------------------|-------|------------------------------------|-----|---------------------------|------|-------------------|------|-----------|------|-------|-----|-------------------------------------|-----|-------|------|-------------------|-----|---------------|------|-----------------------|
| | | American Indian or Alaska Native | | Black or African American | | Hispanic / Latino | | URM Total | | Asian | | Native Hawaiian or Pacific Islander | | White | | Two or More Races | | International | | Race/Eth Not Reported |
| | | Count | % | Count | % | Count | % | Count | % | Count | % | Count | % | Count | % | Count | % | Count | % | Count |
| 2012 | 180 | 0 | 0.0 | 15 | 8.3 | 20 | 11.1 | 35 | 19.4 | 6 | 3.3 | 0 | 0.0 | 115 | 63.9 | 7 | 3.9 | 10 | 5.6 | 7 |
| 2013 | 179 | 0 | 0.0 | 12 | 6.7 | 19 | 10.6 | 31 | 17.3 | 7 | 3.9 | 0 | 0.0 | 112 | 62.6 | 9 | 5.0 | 15 | 8.4 | 5 |
| 2014 | 153 | 0 | 0.0 | 12 | 7.8 | 15 | 9.8 | 27 | 17.6 | 5 | 3.3 | 0 | 0.0 | 90 | 58.8 | 6 | 3.9 | 17 | 11.1 | 8 |
| 2015 | 162 | 0 | 0.0 | 23 | 14.2 | 20 | 12.3 | 43 | 26.5 | 7 | 4.3 | 0 | 0.0 | 84 | 51.9 | 3 | 1.9 | 19 | 11.7 | 6 |
| 2016 | 149 | 0 | 0.0 | 24 | 16.1 | 23 | 15.4 | 47 | 31.5 | 3 | 2.0 | 0 | 0.0 | 77 | 51.7 | 1 | 0.7 | 20 | 13.4 | 1 |



Notes: 1) URM stands for Under-Represented Minority and includes American Indian or Alaska Native; Black or African-American; Hispanic / Latino race/ethnicity groups
 2) Individual URM groups, Native Hawaiian Pacific Islander, Two or More Races, and Other race/ethnicity categories left off this chart due to relatively low numbers

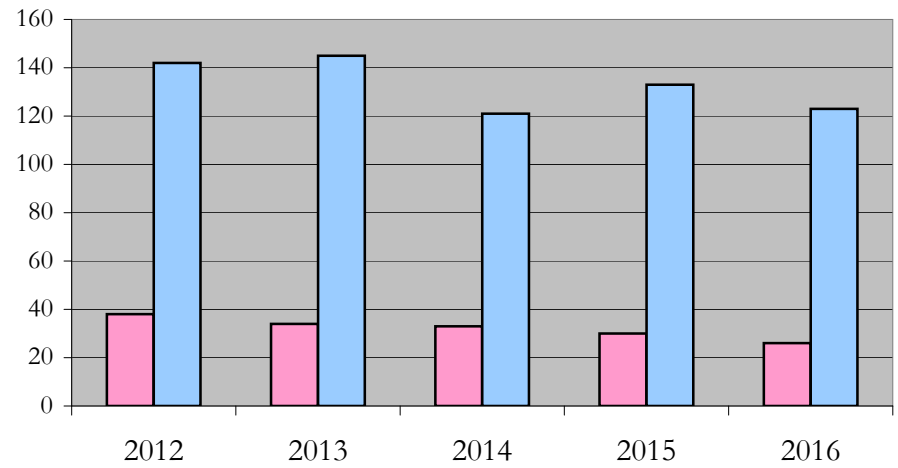
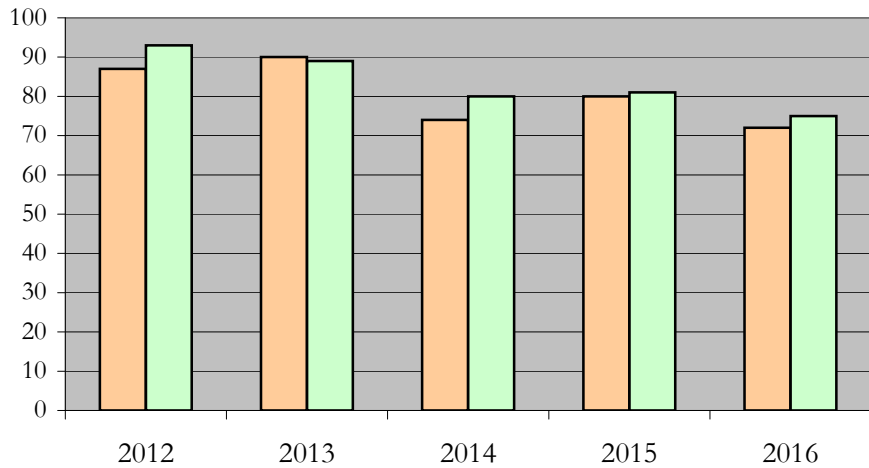
Total Enrollment (includes secondary curriculum)

by Student Type, Gender, and Enrollment Time

Urban_Planning_and_Policy_MUPP [20FS1786MUPP]

Fall 2012 through Fall 2016

| Fall Semester Year | Total | New | | Continuing | | Male | | Female | | Gender Not Reported | Part-time | | Full-time | |
|--------------------|-------|-------|------|------------|------|-------|------|--------|------|---------------------|-----------|------|-----------|------|
| | | Count | % | Count | % | Count | % | Count | % | Count | Count | % | Count | % |
| 2012 | 180 | 79 | 43.9 | 101 | 56.1 | 87 | 48.3 | 93 | 51.7 | 0 | 38 | 21.1 | 142 | 78.9 |
| 2013 | 179 | 50 | 27.9 | 129 | 72.1 | 90 | 50.3 | 89 | 49.7 | 0 | 34 | 19.0 | 145 | 81.0 |
| 2014 | 153 | 50 | 32.7 | 103 | 67.3 | 74 | 48.4 | 80 | 52.3 | -1 | 33 | 21.6 | 121 | 79.1 |
| 2015 | 162 | 63 | 38.9 | 99 | 61.1 | 80 | 49.4 | 81 | 50.0 | 1 | 30 | 18.5 | 133 | 82.1 |
| 2016 | 149 | 50 | 33.6 | 99 | 66.4 | 72 | 48.3 | 75 | 50.3 | 2 | 26 | 17.4 | 123 | 82.6 |



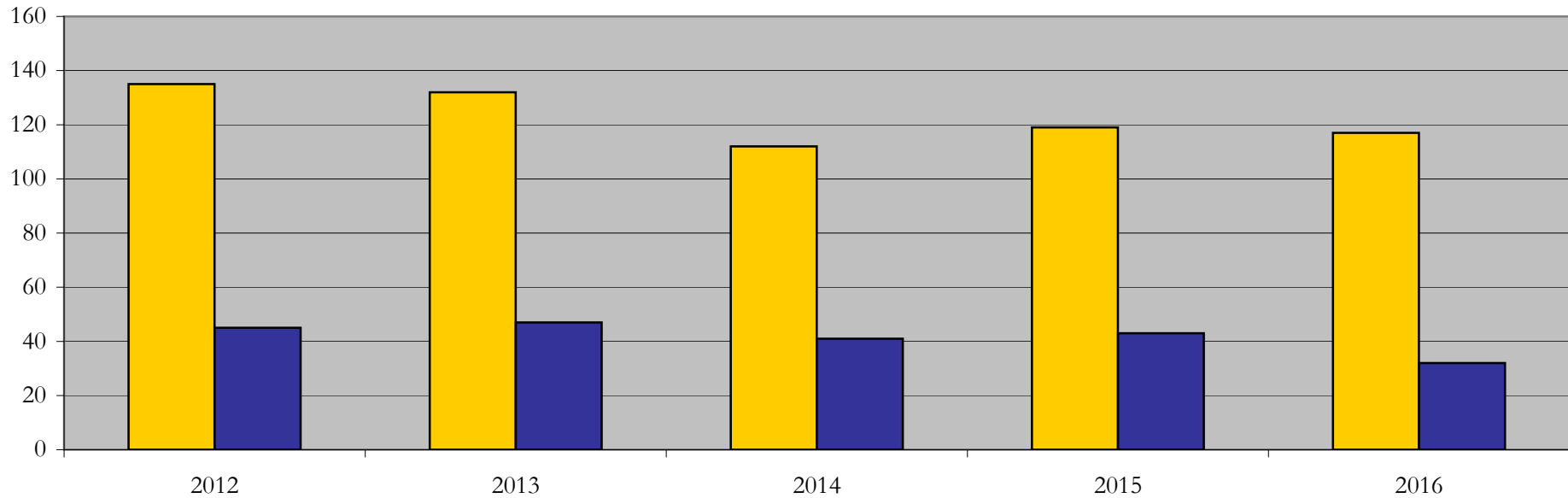
Enrollment & Degrees Conferred

by Primary/Secondary, Average Age, State Residency

Urban_Planning_and_Policy_MUPP [20FS1786MUPP]

Fall 2012 through Fall 2016

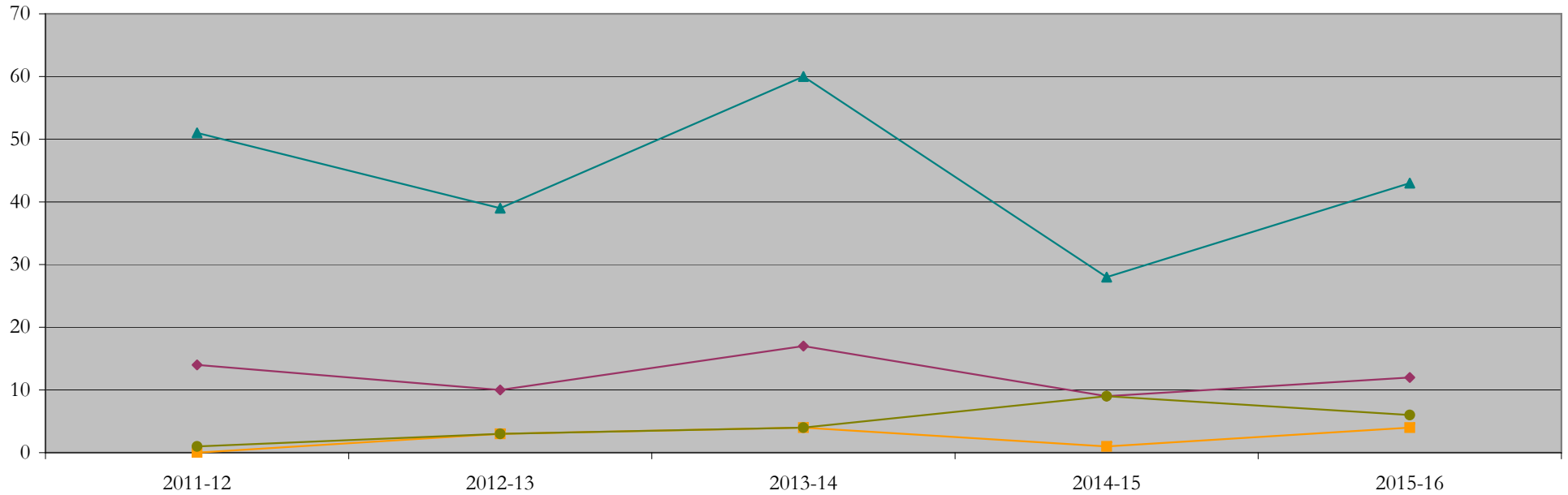
| Fall Semester Year | Enrollment | | | Average Age | | | State Residency of Total Enrollment | | | | | |
|--------------------|------------|---------|-----------|---------------------|----------------------------|--------------------------------|-------------------------------------|----------------|-----------------------|------------------|----------------|-----------------------|
| | Total | Primary | Secondary | Fall New Enrollment | Fall Continuing Enrollment | Academic Year Graduating Class | Residents | | | Non-Residents | | |
| | | | | | | | Total Enrollment | New Enrollment | Continuing Enrollment | Total Enrollment | New Enrollment | Continuing Enrollment |
| 2012 | 180 | 179 | 1 | 26 | 29 | 29 | 135 | 49 | 86 | 45 | 30 | 15 |
| 2013 | 179 | 178 | 1 | 27 | 28 | 29 | 132 | 35 | 97 | 47 | 15 | 32 |
| 2014 | 153 | 152 | 1 | 26 | 29 | 26 | 112 | 31 | 81 | 41 | 19 | 22 |
| 2015 | 162 | 161 | 1 | 28 | 29 | 27 | 119 | 42 | 77 | 43 | 21 | 22 |
| 2016 | 149 | 148 | 1 | 27 | 29 | 29 | 117 | 39 | 78 | 32 | 11 | 21 |



Degrees Conferred by Race/Ethnicity

Urban_Planning_and_Policy_MUPP [20FS1786MUPP]
AY2011-12 through 2015-16

| Academic Year | Total | Under Represented Minorities (URM) | | | | | | | | Asian | | Native Hawaiian or Pacific | | White | | Two or More Races | | International | | Not Reported |
|---------------|-------|------------------------------------|-----|---------------------------|-----|-------------------|------|-----------|------|-------|-----|----------------------------|-----|-------|------|-------------------|-----|---------------|------|--------------|
| | | American Indian or Alaska Native | | Black or African American | | Hispanic / Latino | | URM Total | | Count | % | Count | % | Count | % | Count | % | Count | % | |
| | | Count | % | Count | % | Count | % | Count | % | | | | | | | | | | | |
| 2011 - 2012 | 69 | 0 | 0.0 | 4 | 5.8 | 10 | 14.5 | 14 | 20.3 | 0 | 0.0 | 0 | 0.0 | 51 | 73.9 | 1 | 1.4 | 1 | 1.4 | 2 |
| 2012 - 2013 | 57 | 0 | 0.0 | 4 | 7.0 | 6 | 10.5 | 10 | 17.5 | 3 | 5.3 | 0 | 0.0 | 39 | 68.4 | 1 | 1.8 | 3 | 5.3 | 1 |
| 2013 - 2014 | 90 | 0 | 0.0 | 6 | 6.7 | 11 | 12.2 | 17 | 18.9 | 4 | 4.4 | 0 | 0.0 | 60 | 66.7 | 4 | 4.4 | 4 | 4.4 | 1 |
| 2014 - 2015 | 50 | 0 | 0.0 | 1 | 2.0 | 8 | 16.0 | 9 | 18.0 | 1 | 2.0 | 0 | 0.0 | 28 | 56.0 | 2 | 4.0 | 9 | 18.0 | 1 |
| 2015 - 2016 | 74 | 0 | 0.0 | 6 | 8.1 | 6 | 8.1 | 12 | 16.2 | 4 | 5.4 | 0 | 0.0 | 43 | 58.1 | 5 | 6.8 | 6 | 8.1 | 4 |



Notes: 1) URM stands for Under-Represented Minority and includes American Indian or Alaska Native; Black or African-American; Hispanic / Latino race/ethnicity groups
2) Individual URM groups, Native Hawaiian Pacific Islander, Two or More Races, and Other race/ethnicity categories left off this chart due to relatively low numbers

Degrees Conferred

by Gender

Urban_Planning_and_Policy_MUPP [20FS1786MUPP]

AY2011-12 through 2015-16

| Academic Year | Total | Male | | Female | | Not Reported |
|---------------|-------|-------|------|--------|------|--------------|
| | | Count | % | Count | % | |
| 2011 - 2012 | 69 | 34 | 49.3 | 35 | 50.7 | 0 |
| 2012 - 2013 | 57 | 22 | 38.6 | 35 | 61.4 | 0 |
| 2013 - 2014 | 90 | 47 | 52.2 | 43 | 47.8 | 0 |
| 2014 - 2015 | 50 | 23 | 46.0 | 27 | 54.0 | 0 |
| 2015 - 2016 | 74 | 41 | 55.4 | 33 | 44.6 | 0 |

