

Matriculation

Diversity Pipeline

Public_Administration_MPA [20FS0339MPA]

Fall 2012 through Fall 2016

Fall Semester Year	Applied					Admitted					Non-URM Admitted to Applied Yield %	URM Admitted to Applied Yield %	New Enrollment					Non-URM Enrolled to Admitted Yield %	URM Enrolled to Admitted Yield %	Total Enrollment				
	Grand Total	Non-URM Total		URM Total		Grand Total	Non-URM Total		URM Total				Grand Total	Non-URM Total		URM Total				Grand Total	Non-URM Total		URM Total	
		Count	%	Count	%		Count	%	Count	%				Count	%	Count	%				Count	%	Count	%
2012	143	105	73.4%	38	26.6%	96	75	78.1%	21	21.9%	71.4%	55.3%	42	31	73.8%	11	26.2%	41.3%	52.4%	132	96	72.7%	36	27.3%
2013	112	92	82.1%	20	17.9%	76	63	82.9%	13	17.1%	68.5%	65.0%	31	21	67.7%	10	32.3%	33.3%	76.9%	112	82	73.2%	30	26.8%
2014	123	93	75.6%	30	24.4%	91	69	75.8%	22	24.2%	74.2%	73.3%	33	20	60.6%	13	39.4%	29.0%	59.1%	108	75	69.4%	33	30.6%
2015	112	82	73.2%	30	26.8%	86	64	74.4%	22	25.6%	78.0%	73.3%	35	21	60.0%	14	40.0%	32.8%	63.6%	98	65	66.3%	33	33.7%
2016	92	70	76.1%	22	23.9%	64	51	79.7%	13	20.3%	72.9%	59.1%	32	21	65.6%	11	34.4%	41.2%	84.6%	100	65	65.0%	35	35.0%
Average	116	88	75.9%	28	24.1%	83	64	78.0%	18	22.0%	72.9%	65.0%	35	23	65.9%	12	34.1%	35.4%	64.8%	110	77	69.6%	33.4	30.4%

Note: URM stands for Under-Represented Minority and includes American Indian or Alaska Native; Black or African-American; Hispanic / Latino race/ethnicity groups

Applications, Admission, & New Enrollment Yields

by Race/Ethnicity & Gender

Public_Administration_MPA [20FS0339MPA]

Fall 2012 through Fall 2016

	Fall Semester Year	Total		Under Represented Minorities (URM)										Race/Eth Not Reported		Male		Female									
				American Indian or Alaska Native		Black or African American		Hispanic / Latino		URM Total		Asian								Native Hawaiian or Pacific Islander		White		Two or More Races		International	
		Count	% Yield	Count	% Yield	Count	% Yield	Count	% Yield	Count	% Yield	Count	% Yield	Count	% Yield	Count	% Yield	Count	% Yield	Count	% Yield	Count	% Yield	Count	% Yield		
Applied	2012	143		0		20		18		38		7		0		59		1		31		7		61		81	
	2013	112		0		14		6		20		9		0		53		1		28		1		41		71	
	2014	123		0		14		16		30		10		0		44		3		32		4		46		76	
	2015	112		0		20		10		30		4		0		34		2		40		2		51		61	
	2016	92		0		13		9		22		4		0		31		6		25		4		39		53	
Admitted	2012	96	67.1	0	0.0	9	45.0	12	66.7	21	55.3	4	57.1	0	0.0	49	83.1	1	100.0	16	51.6	5	40	65.6	55	67.9	
	2013	76	67.9	0	0.0	8	57.1	5	83.3	13	65.0	5	55.6	0	0.0	41	77.4	0	0.0	17	60.7	0	27	65.9	49	69.0	
	2014	91	74.0	0	0.0	9	64.3	13	81.3	22	73.3	8	80.0	0	0.0	34	77.3	2	66.7	22	68.8	3	32	69.6	59	77.6	
	2015	86	76.8	0	0.0	14	70.0	8	80.0	22	73.3	2	50.0	0	0.0	31	91.2	0	0.0	29	72.5	2	38	74.5	48	78.7	
	2016	64	69.6	0	0.0	8	61.5	5	55.6	13	59.1	2	50.0	0	0.0	22	71.0	4	66.7	19	76.0	4	24	61.5	40	75.5	
Enrolled	2012	42	43.8	0	0.0	4	44.4	7	58.3	11	52.4	0	0.0	0	0.0	23	46.9	0	0.0	6	37.5	2	25	62.5	17	30.9	
	2013	31	40.8	0	0.0	8	100.0	2	40.0	10	76.9	2	40.0	0	0.0	14	34.1	0	0.0	5	29.4	0	12	44.4	19	38.8	
	2014	33	36.3	0	0.0	5	55.6	8	61.5	13	59.1	2	25.0	0	0.0	14	41.2	1	50.0	2	9.1	1	13	40.6	20	33.9	
	2015	35	40.7	0	0.0	9	64.3	5	62.5	14	63.6	2	100.0	0	0.0	16	51.6	0	0.0	3	10.3	0	17	44.7	18	37.5	
	2016	32	50.0	0	0.0	6	75.0	5	100.0	11	84.6	1	50.0	0	0.0	14	63.6	0	0.0	4	21.1	2	12	50.0	20	50.0	

Notes:

- 1) URM stands for Under-Represented Minority and includes American Indian or Alaska Native; Black or African-American; Hispanic / Latino race/ethnicity groups
- 2) Unreported Gender identification is not shown; Male and Female total may not match Total
- 3) In rare situations, the "% Yield" columns may be greater than 100. There are three potential reasons for this:
 - a) Students that received Graduate College approved transfers may not have an admission record for the program that they enrolled into.
 - b) Students with a secondary curriculum enrollment may not have an admission record for that secondary program.
 - c) Students who were newly enrolled in the summer term prior to the fall were added to the fall new enrollment totals.

Applications, Admission, & New Enrollment Yields, cont. by Race/Ethnicity & Gender

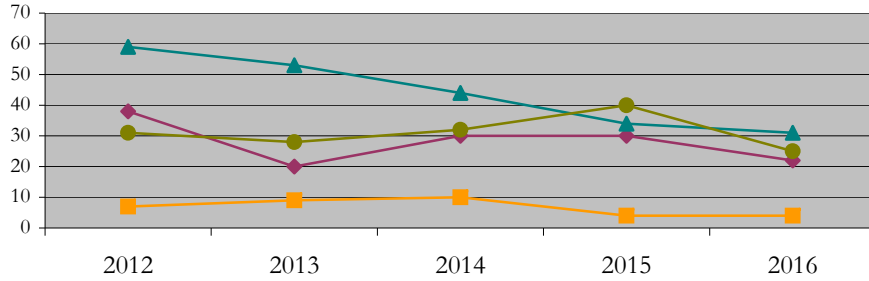
Public_Administration_MPA [20FS0339MPA]

Fall 2012 through Fall 2016

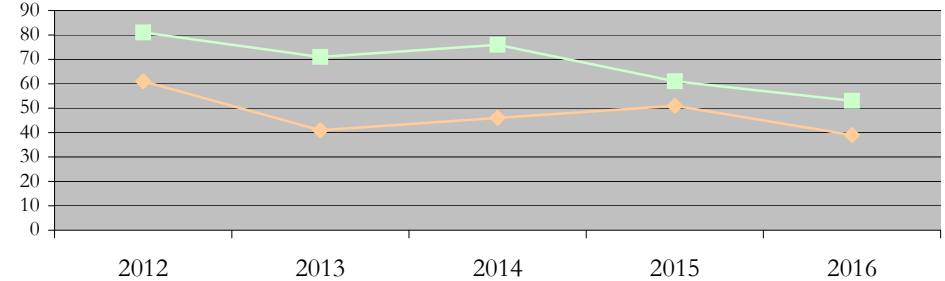
URM Total Asian White International

Male Female

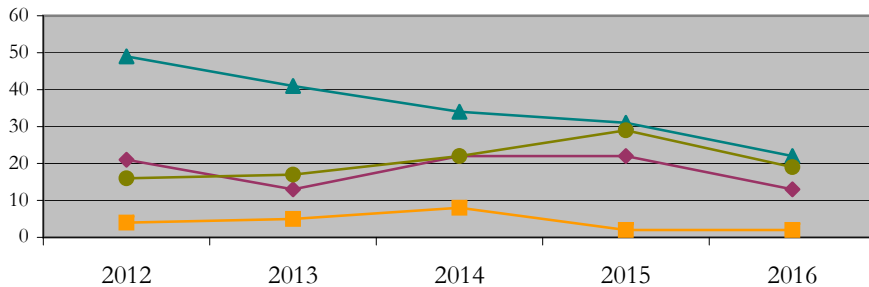
Applications by Race/Ethnicity



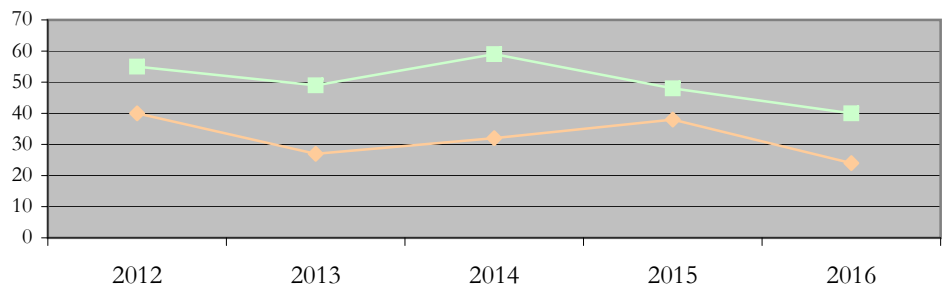
Applications by Gender



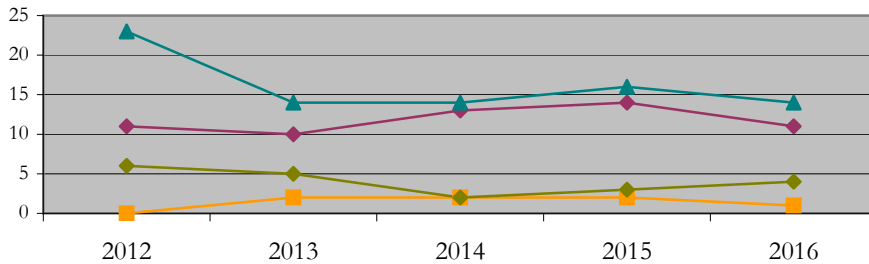
Admissions by Race/Ethnicity



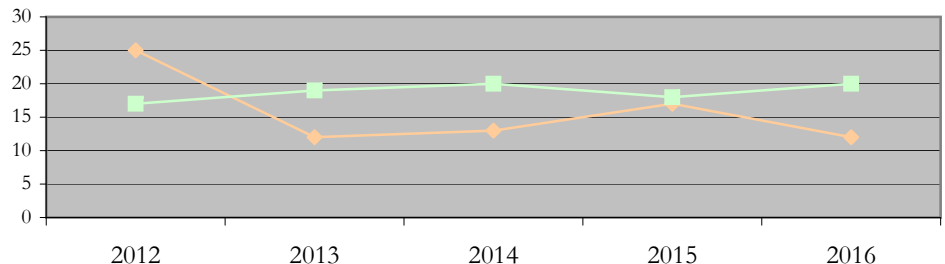
Admissions by Gender



New Enrollments by Race/Ethnicity



New Enrollments by Gender



Notes: 1) URM stands for Under-Represented Minority and includes American Indian or Alaska Native; Black or African-American; Hispanic / Latino race/ethnicity groups
2) Individual URM groups, Native Hawaiian Pacific Islander, Two or More Races, and Other race/ethnicity categories left off these charts due to relatively low numbers

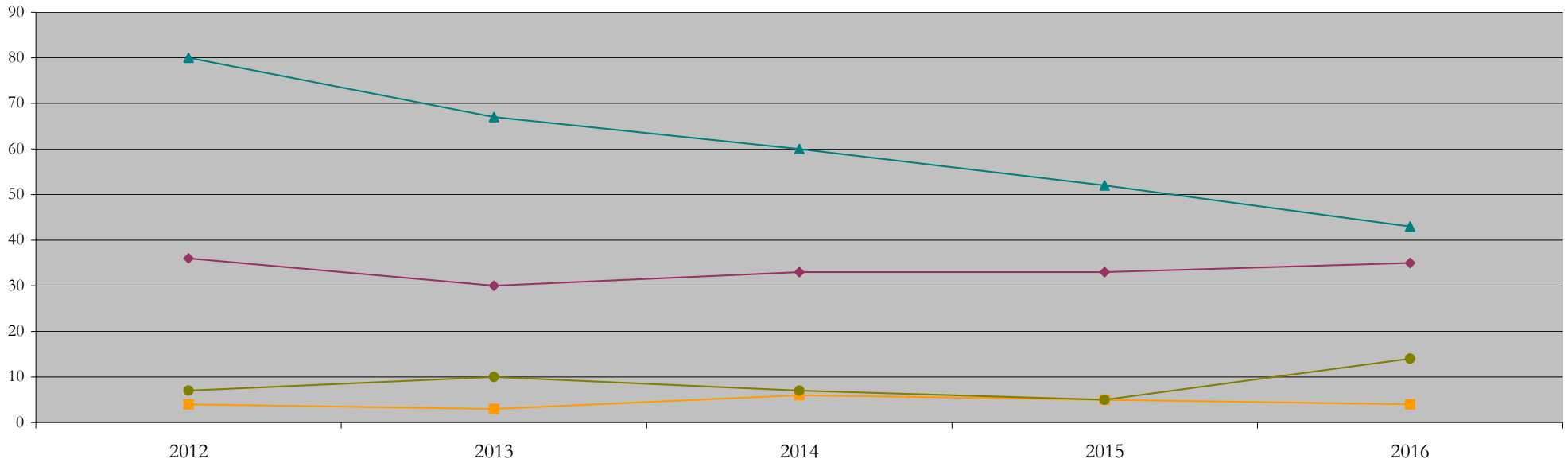
Total Enrollment (includes secondary curriculum)

by Race/Ethnicity

Public_Administration_MPA [20FS0339MPA]

Fall 2012 through Fall 2016

Fall Semester Year	Total	Under Represented Minorities (URM)										Asian	Native Hawaiian or Pacific Islander	White	Two or More Races	International	Race/Eth Not Reported			
		American Indian or Alaska Native		Black or African American		Hispanic / Latino		URM Total												
		Count	%	Count	%	Count	%	Count	%											
2012	132	0	0.0	16	12.1	20	15.2	36	27.3	4	3.0	0	0.0	80	60.6	1	0.8	7	5.3	4
2013	112	0	0.0	17	15.2	13	11.6	30	26.8	3	2.7	0	0.0	67	59.8	0	0.0	10	8.9	2
2014	108	0	0.0	16	14.8	17	15.7	33	30.6	6	5.6	0	0.0	60	55.6	1	0.9	7	6.5	1
2015	98	0	0.0	18	18.4	15	15.3	33	33.7	5	5.1	0	0.0	52	53.1	1	1.0	5	5.1	2
2016	100	0	0.0	16	16.0	19	19.0	35	35.0	4	4.0	0	0.0	43	43.0	1	1.0	14	14.0	3



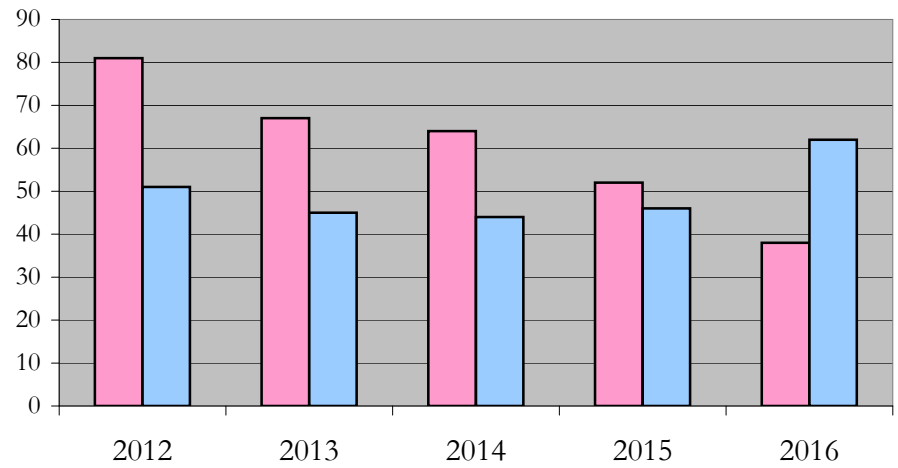
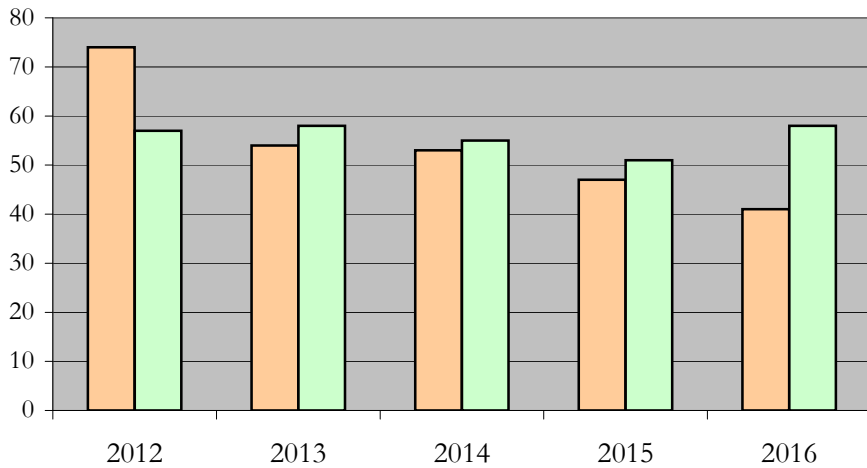
Notes: 1) URM stands for Under-Represented Minority and includes American Indian or Alaska Native; Black or African-American; Hispanic / Latino race/ethnicity groups
 2) Individual URM groups, Native Hawaiian Pacific Islander, Two or More Races, and Other race/ethnicity categories left off this chart due to relatively low numbers

Total Enrollment (includes secondary curriculum)
by Student Type, Gender, and Enrollment Time

Public_Administration_MPA [20FS0339MPA]

Fall 2012 through Fall 2016

Fall Semester Year	Total	New		Continuing		Male		Female		Gender Not Reported	Part-time		Full-time	
		Count	%	Count	%	Count	%	Count	%	Count	Count	%	Count	%
2012	132	42	31.8	90	68.2	74	56.1	57	43.2	1	81	61.4	51	38.6
2013	112	31	27.7	81	72.3	54	48.2	58	51.8	0	67	59.8	45	40.2
2014	108	33	30.6	75	69.4	53	49.1	55	50.9	0	64	59.3	44	40.7
2015	98	35	35.7	63	64.3	47	48.0	51	52.0	0	52	53.1	46	46.9
2016	100	32	32.0	68	68.0	41	41.0	58	58.0	1	38	38.0	62	62.0



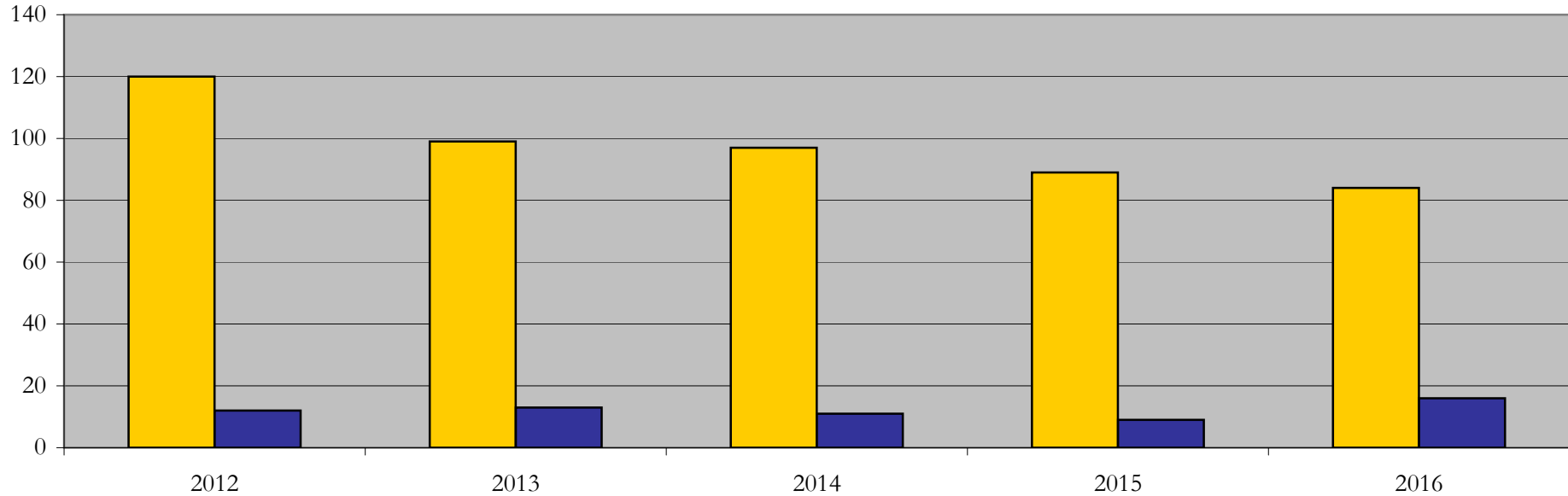
Enrollment & Degrees Conferred

by Primary/Secondary, Average Age, State Residency

Public_Administration_MPA [20FS0339MPA]

Fall 2012 through Fall 2016

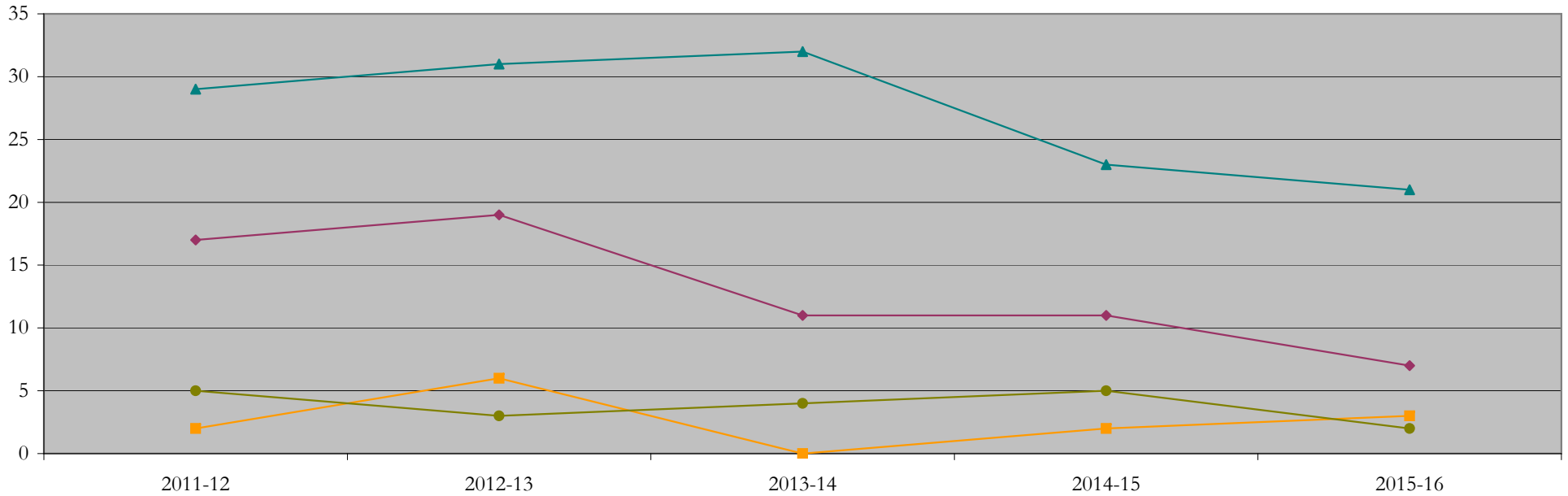
Fall Semester Year	Enrollment			Average Age			State Residency of Total Enrollment					
	Total	Primary	Secondary	Fall New Enrollment	Fall Continuing Enrollment	Academic Year Graduating Class	Residents			Non-Residents		
							Total Enrollment	New Enrollment	Continuing Enrollment	Total Enrollment	New Enrollment	Continuing Enrollment
2012	132	132	0	27	30	30	120	38	82	12	4	8
2013	112	112	0	29	29	30	99	26	73	13	5	8
2014	108	108	0	30	30	27	97	30	67	11	3	8
2015	98	98	0	27	33	26	89	29	60	9	6	3
2016	100	100	0	25	31	29	84	27	57	16	5	11



Degrees Conferred by Race/Ethnicity

Public_Administration_MPA [20FS0339MPA]
AY2011-12 through 2015-16

Academic Year	Total	Under Represented Minorities (URM)								Asian		Native Hawaiian or Pacific		White		Two or More Races		International		Not Reported
		American Indian or Alaska Native		Black or African American		Hispanic / Latino		URM Total		Count	%	Count	%	Count	%	Count	%	Count	%	
		Count	%	Count	%	Count	%	Count	%											
2011 - 2012	56	0	0.0	11	19.6	6	10.7	17	30.4	2	3.6	0	0.0	29	51.8	3	5.4	5	8.9	0
2012 - 2013	60	0	0.0	11	18.3	8	13.3	19	31.7	6	10.0	0	0.0	31	51.7	0	0.0	3	5.0	1
2013 - 2014	50	0	0.0	4	8.0	7	14.0	11	22.0	0	0.0	0	0.0	32	64.0	1	2.0	4	8.0	2
2014 - 2015	41	0	0.0	6	14.6	5	12.2	11	26.8	2	4.9	0	0.0	23	56.1	0	0.0	5	12.2	0
2015 - 2016	33	0	0.0	3	9.1	4	12.1	7	21.2	3	9.1	0	0.0	21	63.6	0	0.0	2	6.1	0



Notes: 1) URM stands for Under-Represented Minority and includes American Indian or Alaska Native; Black or African-American; Hispanic / Latino race/ethnicity groups
2) Individual URM groups, Native Hawaiian Pacific Islander, Two or More Races, and Other race/ethnicity categories left off this chart due to relatively low numbers

Degrees Conferred

by Gender

Public_Administration_MPA [20FS0339MPA]

AY2011-12 through 2015-16

Academic Year	Total	Male		Female		Not Reported
		Count	%	Count	%	
2011 - 2012	55	24	43.6	31	56.4	0
2012 - 2013	59	34	57.6	25	42.4	0
2013 - 2014	50	24	48.0	26	52.0	0
2014 - 2015	41	21	51.2	20	48.8	0
2015 - 2016	33	19	57.6	14	42.4	0

