

# Matriculation

## Diversity Pipeline

Medicine\_Peoria\_MD [20GC1457MD]

Fall 2012 through Fall 2016

Fall Semester Year	Applied					Admitted					Non-URM Admitted to Applied Yield %	URM Admitted to Applied Yield %	New Enrollment					Non-URM Enrolled to Admitted Yield %	URM Enrolled to Admitted Yield %	Total Enrollment				
	Grand Total	Non-URM Total		URM Total		Grand Total	Non-URM Total		URM Total				Grand Total	Non-URM Total		URM Total				Grand Total	Non-URM Total		URM Total	
		Count	%	Count	%		Count	%	Count	%				Count	%	Count	%				Count	%	Count	%
2012	0	0	0.0%	0	0.0%	0	0	0.0%	0	0.0%	0.0%	0.0%	0	0	0.0%	0	0.0%	0.0%	0.0%	160	129	80.6%	31	19.4%
2013	0	0	0.0%	0	0.0%	0	0	0.0%	0	0.0%	0.0%	0.0%	0	0	0.0%	0	0.0%	0.0%	0.0%	163	134	82.2%	29	17.8%
2014	0	0	0.0%	0	0.0%	0	0	0.0%	0	0.0%	0.0%	0.0%	0	0	0.0%	0	0.0%	0.0%	0.0%	169	129	76.3%	40	23.7%
2015	0	0	0.0%	0	0.0%	0	0	0.0%	0	0.0%	0.0%	0.0%	1	0	0.0%	1	100.0%	0.0%	#DIV/0!	165	120	72.7%	45	27.3%
2016	0	0	0.0%	0	0.0%	0	0	0.0%	0	0.0%	0.0%	0.0%	0	0	0.0%	0	0.0%	0.0%	0.0%	172	121	70.3%	51	29.7%
<b>Average</b>	<b>0</b>	<b>0</b>	<b>0.0%</b>	<b>0</b>	<b>0.0%</b>	<b>0</b>	<b>0</b>	<b>0.0%</b>	<b>0</b>	<b>0.0%</b>	<b>0.0%</b>	<b>0.0%</b>	<b>0</b>	<b>0</b>	<b>0.0%</b>	<b>0</b>	<b>100.0%</b>	<b>0.0%</b>	<b>#DIV/0!</b>	<b>166</b>	<b>127</b>	<b>76.4%</b>	<b>39.2</b>	<b>23.6%</b>

**Note:** URM stands for Under-Represented Minority and includes American Indian or Alaska Native; Black or African-American; Hispanic / Latino race/ethnicity groups

# Applications, Admission, & New Enrollment Yields

## by Race/Ethnicity & Gender

Medicine\_Peoria\_MD [20GC1457MD]

Fall 2012 through Fall 2016

	Fall Semester Year	Total	Under Represented Minorities (URM)										Race/Eth Not Reported	Male		Female									
			American Indian or Alaska Native	Black or African American	Hispanic / Latino	URM Total	Asian	Native Hawaiian or Pacific Islander	White	Two or More Races	International	Count		% Yield	Count	% Yield									
Applied	2012	0	0	0	0	0	0	0	0	0	0	0	0	0	0	0	0	0	0	0	0				
	2013	0	0	0	0	0	0	0	0	0	0	0	0	0	0	0	0	0	0	0	0				
	2014	0	0	0	0	0	0	0	0	0	0	0	0	0	0	0	0	0	0	0	0				
	2015	0	0	0	0	0	0	0	0	0	0	0	0	0	0	0	0	0	0	0	0				
	2016	0	0	0	0	0	0	0	0	0	0	0	0	0	0	0	0	0	0	0	0				
		Count	% Yield	Count	% Yield	Count	% Yield	Count	% Yield	Count	% Yield	Count	% Yield	Count	% Yield	Count	% Yield	Count	% Yield	Count	% Yield	Count	% Yield		
Admitted	2012	0	0.0	0	0.0	0	0.0	0	0.0	0	0.0	0	0.0	0	0.0	0	0.0	0	0.0	0	0.0	0	0.0		
	2013	0	0.0	0	0.0	0	0.0	0	0.0	0	0.0	0	0.0	0	0.0	0	0.0	0	0.0	0	0.0	0	0.0		
	2014	0	0.0	0	0.0	0	0.0	0	0.0	0	0.0	0	0.0	0	0.0	0	0.0	0	0.0	0	0.0	0	0.0		
	2015	0	0.0	0	0.0	0	0.0	0	0.0	0	0.0	0	0.0	0	0.0	0	0.0	0	0.0	0	0.0	0	0.0		
	2016	0	0.0	0	0.0	0	0.0	0	0.0	0	0.0	0	0.0	0	0.0	0	0.0	0	0.0	0	0.0	0	0.0		
		Count	% Yield	Count	% Yield	Count	% Yield	Count	% Yield	Count	% Yield	Count	% Yield	Count	% Yield	Count	% Yield	Count	% Yield	Count	% Yield	Count	% Yield		
Enrolled	2012	0	0.0	0	0.0	0	0.0	0	0.0	0	0.0	0	0.0	0	0.0	0	0.0	0	0.0	0	0.0	0	0.0		
	2013	0	0.0	0	0.0	0	0.0	0	0.0	0	0.0	0	0.0	0	0.0	0	0.0	0	0.0	0	0.0	0	0.0		
	2014	0	0.0	0	0.0	0	0.0	0	0.0	0	0.0	0	0.0	0	0.0	0	0.0	0	0.0	0	0.0	0	0.0		
	2015	1	0.0	0	0.0	0	0.0	1	0.0	1	0.0	0	0.0	0	0.0	0	0.0	0	0.0	0	0.0	1	0.0	0	0.0
	2016	0	0.0	0	0.0	0	0.0	0	0.0	0	0.0	0	0.0	0	0.0	0	0.0	0	0.0	0	0.0	0	0.0	0	0.0

**Notes:**

- 1) URM stands for Under-Represented Minority and includes American Indian or Alaska Native; Black or African-American; Hispanic / Latino race/ethnicity groups
- 2) Unreported Gender identification is not shown; Male and Female total may not match Total
- 3) In rare situations, the "% Yield" columns may be greater than 100. There are three potential reasons for this:
  - a) Students that received Graduate College approved transfers may not have an admission record for the program that they enrolled into.
  - b) Students with a secondary curriculum enrollment may not have an admission record for that secondary program.
  - c) Students who were newly enrolled in the summer term prior to the fall were added to the fall new enrollment totals.

# Applications, Admission, & New Enrollment Yields, cont. by Race/Ethnicity & Gender

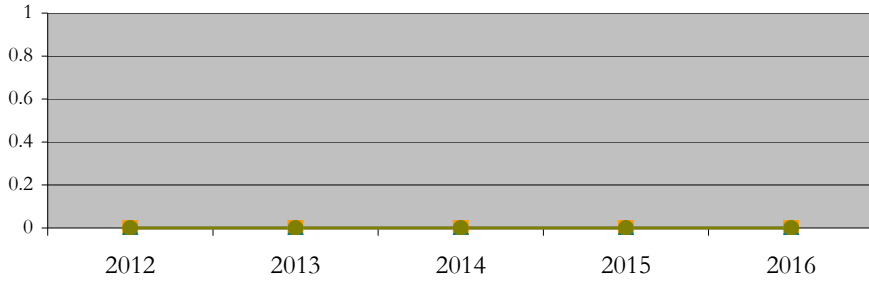
Medicine\_Peoria\_MD [20GC1457MD]

Fall 2012 through Fall 2016

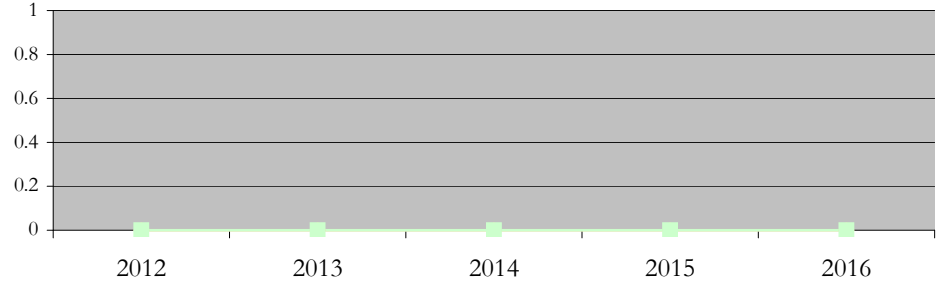
URM Total Asian White International

Male Female

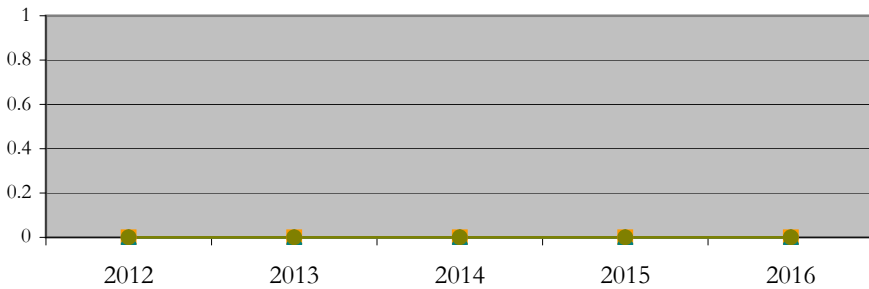
Applications by Race/Ethnicity



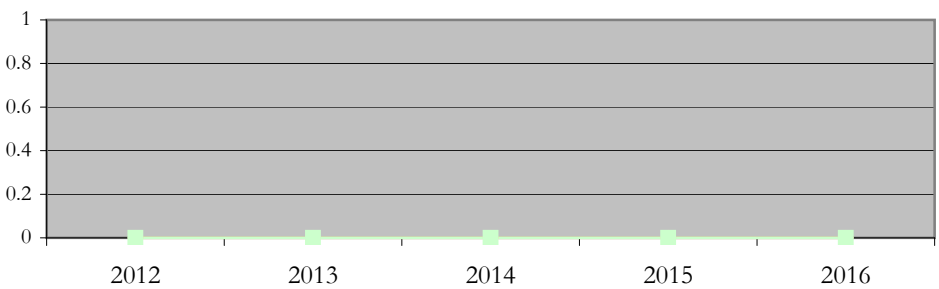
Applications by Gender



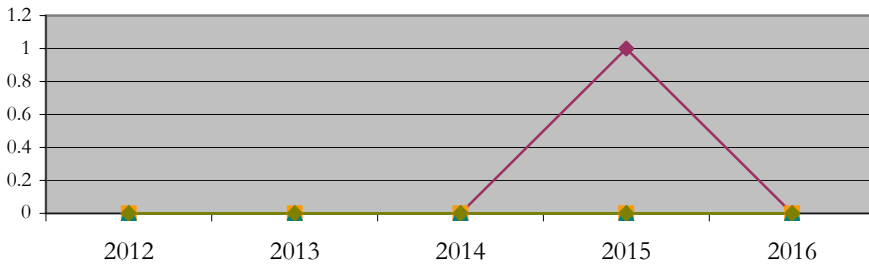
Admissions by Race/Ethnicity



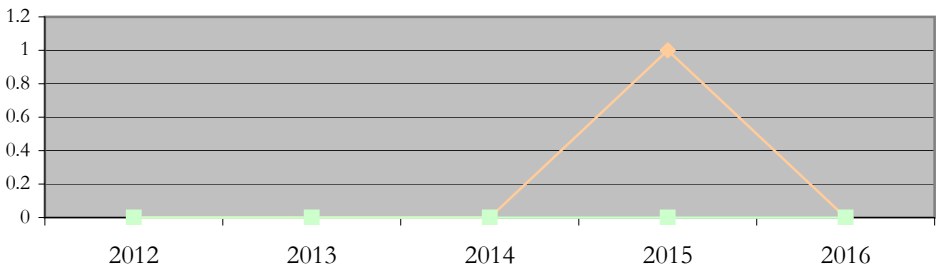
Admissions by Gender



New Enrollments by Race/Ethnicity



New Enrollments by Gender



**Notes:** 1) URM stands for Under-Represented Minority and includes American Indian or Alaska Native; Black or African-American; Hispanic / Latino race/ethnicity groups  
2) Individual URM groups, Native Hawaiian Pacific Islander, Two or More Races, and Other race/ethnicity categories left off these charts due to relatively low numbers

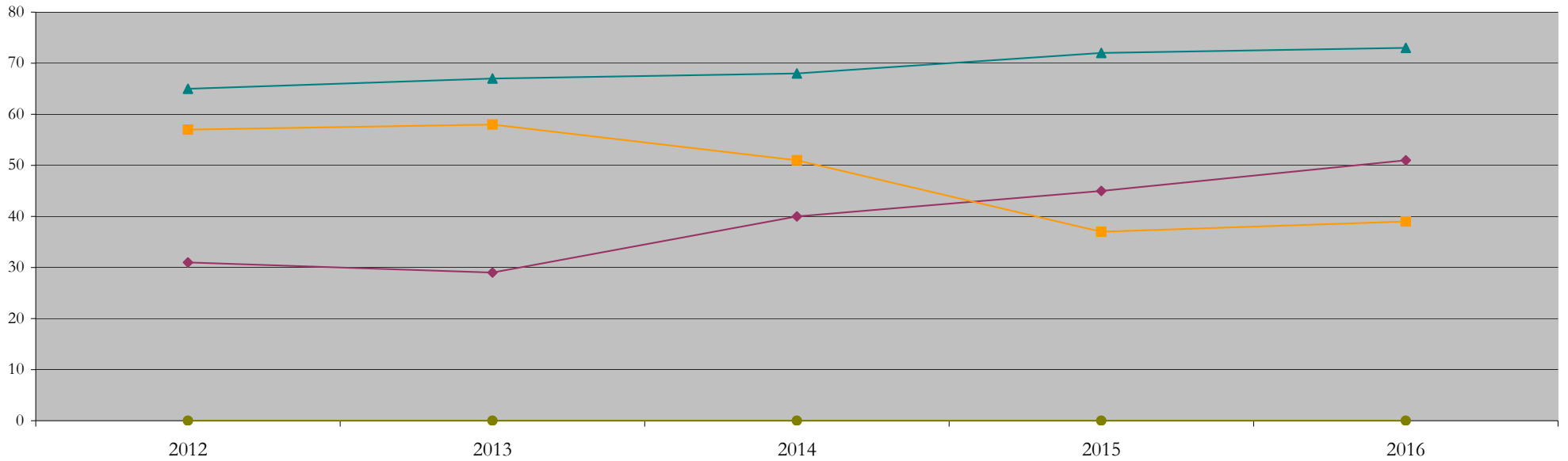
**Total Enrollment (includes secondary curriculum)**

**by Race/Ethnicity**

Medicine\_Peoria\_MD [20GC1457MD]

Fall 2012 through Fall 2016

Fall Semester Year	Total	Under Represented Minorities (URM)										Native Hawaiian or Pacific Islander	White		Two or More Races		International		Race/Eth Not Reported	
		American Indian or Alaska Native		Black or African American		Hispanic / Latino		URM Total		Asian			Count	%	Count	%	Count	%	Count	
		Count	%	Count	%	Count	%	Count	%	Count	%									Count
2012	160	0	0.0	14	8.8	17	10.6	31	19.4	57	35.6	0	0.0	65	40.6	4	2.5	0	0.0	3
2013	163	0	0.0	11	6.7	18	11.0	29	17.8	58	35.6	0	0.0	67	41.1	6	3.7	0	0.0	3
2014	169	0	0.0	16	9.5	24	14.2	40	23.7	51	30.2	0	0.0	68	40.2	5	3.0	0	0.0	5
2015	165	0	0.0	17	10.3	28	17.0	45	27.3	37	22.4	0	0.0	72	43.6	8	4.8	0	0.0	3
2016	172	0	0.0	15	8.7	36	20.9	51	29.7	39	22.7	0	0.0	73	42.4	5	2.9	0	0.0	4



**Notes:** 1) URM stands for Under-Represented Minority and includes American Indian or Alaska Native; Black or African-American; Hispanic / Latino race/ethnicity groups  
 2) Individual URM groups, Native Hawaiian Pacific Islander, Two or More Races, and Other race/ethnicity categories left off this chart due to relatively low numbers

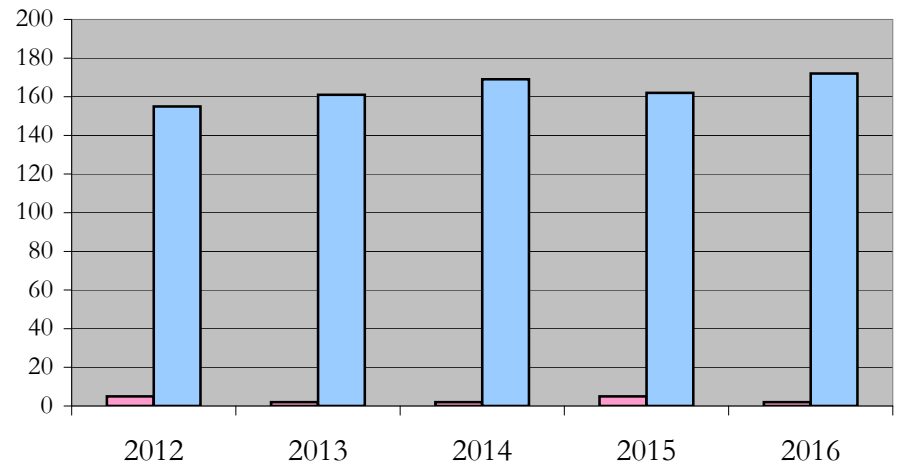
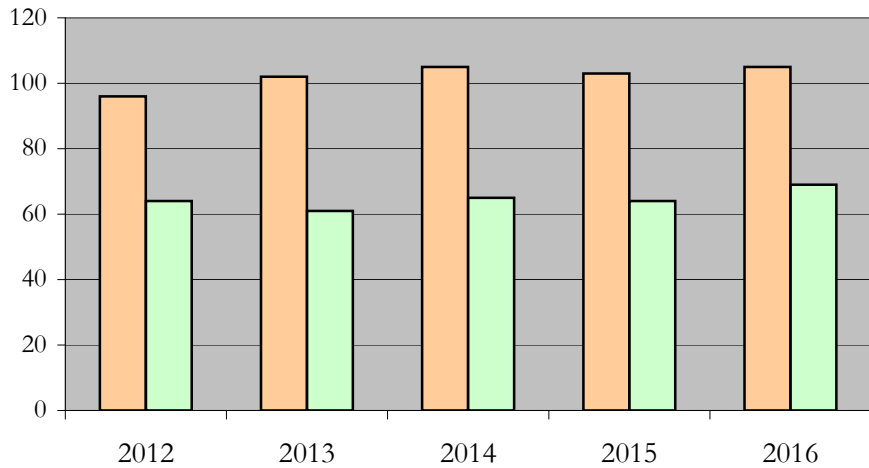
**Total Enrollment (includes secondary curriculum)**

**by Student Type, Gender, and Enrollment Time**

Medicine\_Peoria\_MD [20GC1457MD]

Fall 2012 through Fall 2016

Fall Semester Year	Total	New		Continuing		Male		Female		Gender Not Reported	Part-time		Full-time	
		Count	%	Count	%	Count	%	Count	%	Count	Count	%	Count	%
2012	160	0	0.0	160	100.0	96	60.0	64	40.0	0	5	3.1	155	96.9
2013	163	0	0.0	163	100.0	102	62.6	61	37.4	0	2	1.2	161	98.8
2014	169	0	0.0	169	100.0	105	62.1	65	38.5	-1	2	1.2	169	100.0
2015	165	1	0.6	164	99.4	103	62.4	64	38.8	-2	5	3.0	162	98.2
2016	172	0	0.0	172	100.0	105	61.0	69	40.1	-2	2	1.2	172	100.0



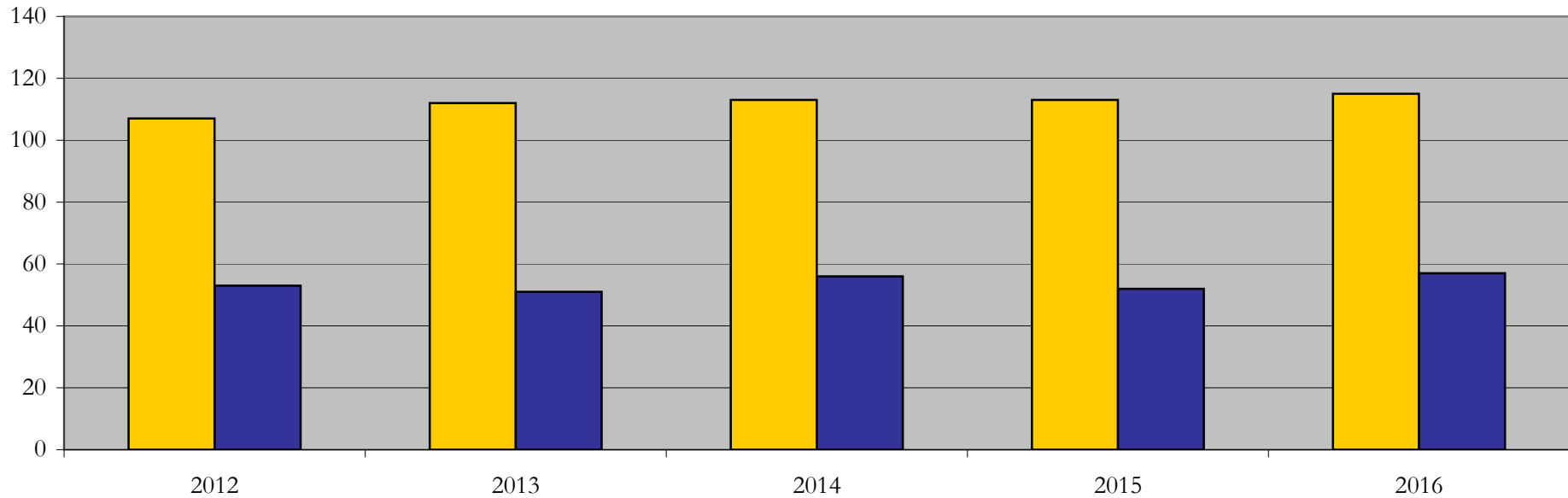
## Enrollment & Degrees Conferred

### by Primary/Secondary, Average Age, State Residency

Medicine\_Peoria\_MD [20GC1457MD]

Fall 2012 through Fall 2016

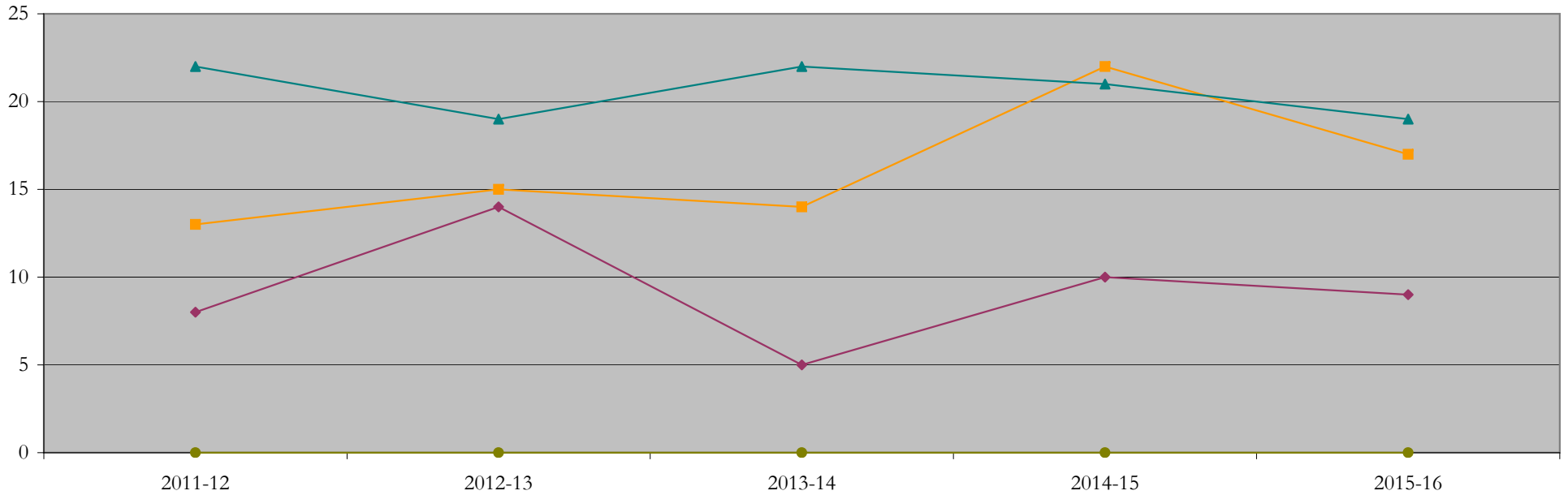
Fall Semester Year	Enrollment			Average Age			State Residency of Total Enrollment					
	Total	Primary	Secondary	Fall New Enrollment	Fall Continuing Enrollment	Academic Year Graduating Class	Residents			Non-Residents		
							Total Enrollment	New Enrollment	Continuing Enrollment	Total Enrollment	New Enrollment	Continuing Enrollment
2012	160	156	4	0	26	27	107	0	107	53	0	53
2013	163	158	5	0	26	27	112	0	112	51	0	51
2014	169	167	2	0	26	25	113	0	113	56	0	56
2015	165	165	0	27	26	24	113	1	112	52	0	52
2016	172	169	3	0	26	27	115	0	115	57	0	57



## Degrees Conferred by Race/Ethnicity

Medicine\_Peoria\_MD [20GC1457MD]  
AY2011-12 through 2015-16

Academic Year	Total	Under Represented Minorities (URM)								Asian		Native Hawaiian or Pacific		White		Two or More Races		International		Not Reported
		American Indian or Alaska Native		Black or African American		Hispanic / Latino		URM Total		Count	%	Count	%	Count	%	Count	%	Count	%	Count
		Count	%	Count	%	Count	%	Count	%											
2011 - 2012	46	0	0.0	3	6.5	5	10.9	8	17.4	13	28.3	0	0.0	22	47.8	1	2.2	0	0.0	2
2012 - 2013	51	0	0.0	6	11.8	8	15.7	14	27.5	15	29.4	0	0.0	19	37.3	2	3.9	0	0.0	1
2013 - 2014	44	0	0.0	3	6.8	2	4.5	5	11.4	14	31.8	0	0.0	22	50.0	2	4.5	0	0.0	1
2014 - 2015	54	0	0.0	2	3.7	8	14.8	10	18.5	22	40.7	0	0.0	21	38.9	0	0.0	0	0.0	1
2015 - 2016	50	0	0.0	5	10.0	4	8.0	9	18.0	17	34.0	0	0.0	19	38.0	5	10.0	0	0.0	0



**Notes:** 1) URM stands for Under-Represented Minority and includes American Indian or Alaska Native; Black or African-American; Hispanic / Latino race/ethnicity groups  
2) Individual URM groups, Native Hawaiian Pacific Islander, Two or More Races, and Other race/ethnicity categories left off this chart due to relatively low numbers

## Degrees Conferred

### by Gender

Medicine\_Peoria\_MD [20GC1457MD]

AY2011-12 through 2015-16

Academic Year	Total	Male		Female		Not Reported
		Count	%	Count	%	
2011 - 2012	46	24	52.2	22	47.8	0
2012 - 2013	51	31	60.8	20	39.2	0
2013 - 2014	44	29	65.9	15	34.1	0
2014 - 2015	54	27	50.0	27	50.0	0
2015 - 2016	50	33	66.0	17	34.0	0

