

Matriculation

Diversity Pipeline

Pathology_PHD [20FS1548PHD]

Fall 2014 - Fall 2018

Fall Semester Year	Applied					Admitted					Non-URM Admitted to Applied Yield %	URM Admitted to Applied Yield %	New Enrollment					Non-URM Enrolled to Admitted Yield %	URM Enrolled to Admitted Yield %	Total Enrollment				
	Grand Total	Non-URM Total		URM Total		Grand Total	Non-URM Total		URM Total				Grand Total	Non-URM Total		URM Total				Grand Total	Non-URM Total		URM Total	
		Count	%	Count	%		Count	%	Count	%				Count	%	Count	%				Count	%	Count	%
	Count	%	Count	%	Count	%	Count	%	Count	%			Count	%	Count	%	Count			%	Count	%	Count	%
2014	46	41	89.1%	5	10.9%	0	0	0.0%	0	0.0%	0.0%	0.0%	0	0	0.0%	0	0.0%	0.0%	0.0%	7	6	85.7%	1	14.3%
2015	20	18	90.0%	2	10.0%	2	2	100.0%	0	0.0%	11.1%	0.0%	1	1	100.0%	0	0.0%	50.0%	0.0%	8	7	87.5%	1	12.5%
2016	23	22	95.7%	1	4.3%	3	2	66.7%	1	33.3%	9.1%	100.0%	3	2	66.7%	1	33.3%	100.0%	100.0%	8	6	75.0%	2	25.0%
2017	21	18	85.7%	3	14.3%	2	1	50.0%	1	50.0%	5.6%	33.3%	0	0	0.0%	0	0.0%	0.0%	0.0%	9	7	77.8%	2	22.2%
2018	0	0	0.0%	0	0.0%	0	0	0.0%	0	0.0%	0.0%	0.0%	0	0	0.0%	0	0.0%	0.0%	0.0%	8	6	75.0%	2	25.0%
Average	22	20	90.0%	2	10.0%	1	1	71.4%	0	28.6%	5.1%	18.2%	1	1	75.0%	0	25.0%	60.0%	50.0%	8	6	80.0%	1.6	20.0%

Note: URM stands for Under-Represented Minority and includes American Indian or Alaska Native; Black or African-American; Hispanic / Latino race/ethnicity groups

Applications, Admission, & New Enrollment Yields

by Race/Ethnicity & Gender

Pathology_PHD [20FS1548PHD]

Fall 2014 - Fall 2018

	Fall Semester Year	Total	Under Represented Minorities (URM)										Race/Eth Not Reported	Male	Female												
			American Indian or Alaska Native		Black or African American		Hispanic / Latino		URM Total		Asian					Native Hawaiian or Pacific Islander		White		Two or More Races		International					
			Count	% Yield	Count	% Yield	Count	% Yield	Count	% Yield	Count	% Yield	Count	% Yield	Count	% Yield	Count	% Yield	Count	% Yield	Count	% Yield	Count	% Yield	Count	% Yield	
Applied	2014	46	0		1		4		5		2		0		14		1		22		2		21		24		
	2015	20	0		1		1		2		0		1		6		0		11		0		10		10		
	2016	23	0		0		1		1		2		0		10		1		9		0		9		14		
	2017	21	0		1		2		3		1		0		4		0		13		0		7		14		
	2018	0	0		0		0		0		0		0		0		0		0		0		0		0		
Admitted	2014	0	0.0	0	0.0	0	0.0	0	0.0	0	0.0	0	0.0	0	0.0	0	0.0	0	0.0	0	0.0	0	0.0	0	0.0	0	0.0
	2015	2	10.0	0	0.0	0	0.0	0	0.0	0	0.0	0	0.0	0	0.0	2	33.3	0	0.0	0	0.0	0	0.0	1	10.0	1	10.0
	2016	3	13.0	0	0.0	0	0.0	1	100.0	1	100.0	1	50.0	0	0.0	1	10.0	0	0.0	0	0.0	0	0.0	3	33.3	0	0.0
	2017	2	9.5	0	0.0	1	100.0	0	0.0	1	33.3	1	100.0	0	0.0	0	0.0	0	0.0	0	0.0	0	0.0	1	14.3	1	7.1
	2018	0	0.0	0	0.0	0	0.0	0	0.0	0	0.0	0	0.0	0	0.0	0	0.0	0	0.0	0	0.0	0	0.0	0	0.0	0	0.0
Enrolled	2014	0	0.0	0	0.0	0	0.0	0	0.0	0	0.0	0	0.0	0	0.0	0	0.0	0	0.0	0	0.0	0	0.0	0	0.0	0	0.0
	2015	1	50.0	0	0.0	0	0.0	0	0.0	0	0.0	0	0.0	0	0.0	1	50.0	0	0.0	0	0.0	0	0.0	0	0.0	1	100.0
	2016	3	100.0	0	0.0	0	0.0	1	100.0	1	100.0	1	100.0	0	0.0	1	100.0	0	0.0	0	0.0	0	0.0	3	100.0	0	0.0
	2017	0	0.0	0	0.0	0	0.0	0	0.0	0	0.0	0	0.0	0	0.0	0	0.0	0	0.0	0	0.0	0	0.0	0	0.0	0	0.0
	2018	0	0.0	0	0.0	0	0.0	0	0.0	0	0.0	0	0.0	0	0.0	0	0.0	0	0.0	0	0.0	0	0.0	0	0.0	0	0.0

Notes:

- 1) URM stands for Under-Represented Minority and includes American Indian or Alaska Native; Black or African-American; Hispanic / Latino race/ethnicity groups
- 2) Unreported Gender identification is not shown; Male and Female total may not match Total
- 3) In rare situations, the "% Yield" columns may be greater than 100. There are three potential reasons for this:
 - a) Students that received Graduate College approved transfers may not have an admission record for the program that they enrolled into.
 - b) Students with a secondary curriculum enrollment may not have an admission record for that secondary program.
 - c) Students who were newly enrolled in the summer term prior to the fall were added to the fall new enrollment totals.

Applications, Admission, & New Enrollment Yields, cont.

by Race/Ethnicity & Gender

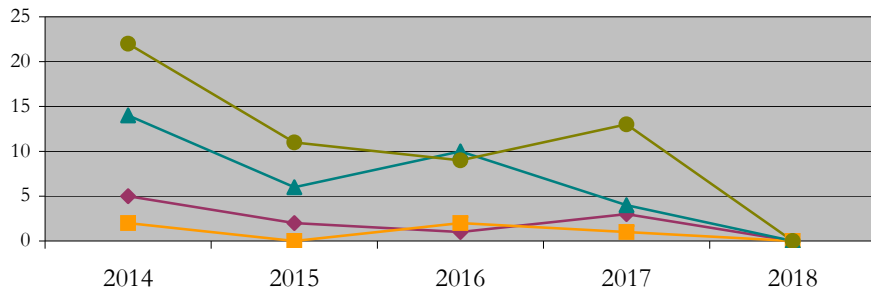
Pathology_PHD [20FS1548PHD]

Fall 2014 - Fall 2018

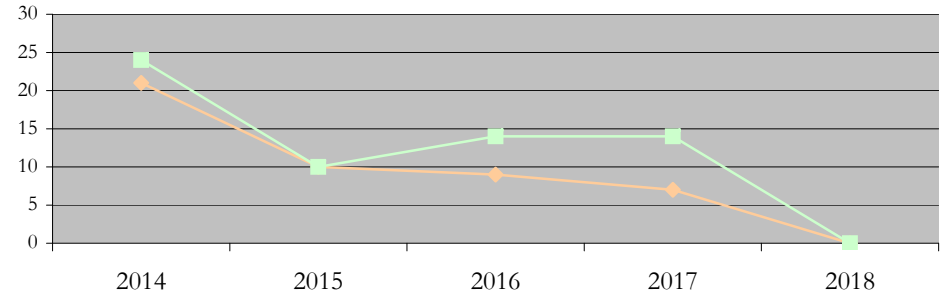
URM Total Asian White International

Male Female

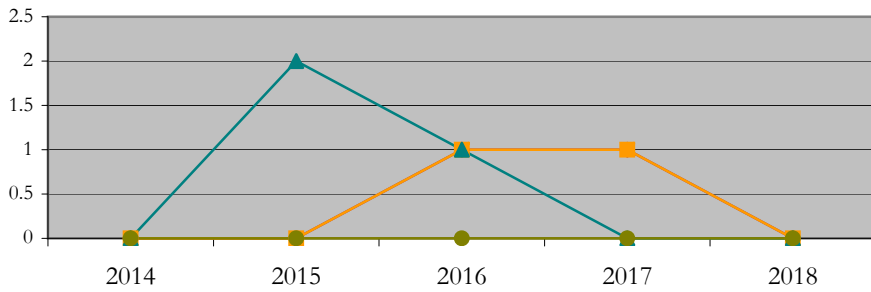
Applications by Race/Ethnicity



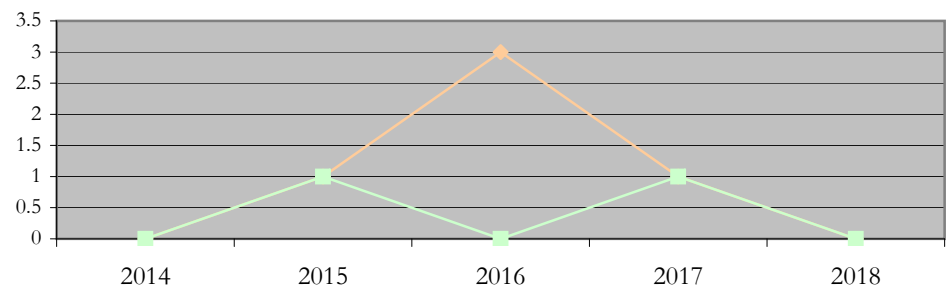
Applications by Gender



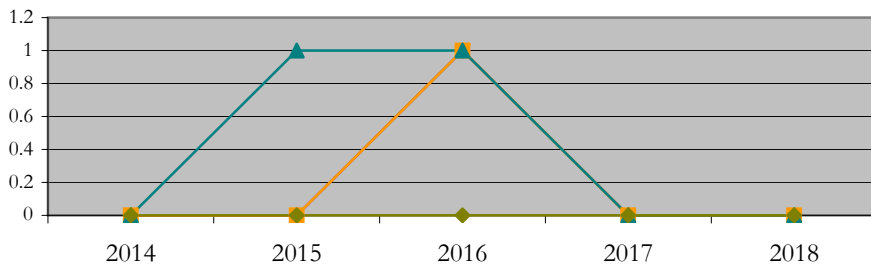
Admissions by Race/Ethnicity



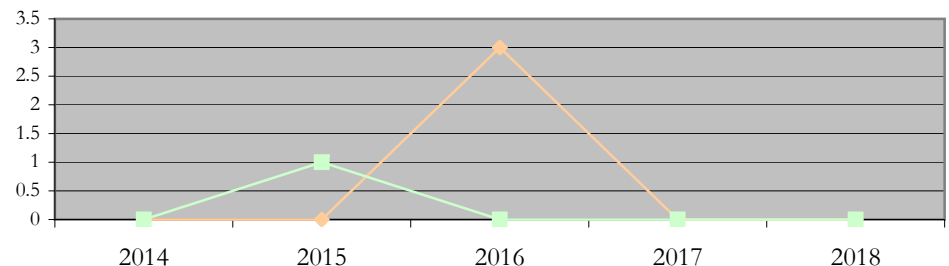
Admissions by Gender



New Enrollments by Race/Ethnicity



New Enrollments by Gender



Notes: 1) URM stands for Under-Represented Minority and includes American Indian or Alaska Native; Black or African-American; Hispanic / Latino race/ethnicity groups
 2) Individual URM groups, Native Hawaiian Pacific Islander, Two or More Races, and Other race/ethnicity categories left off these charts due to relatively low numbers

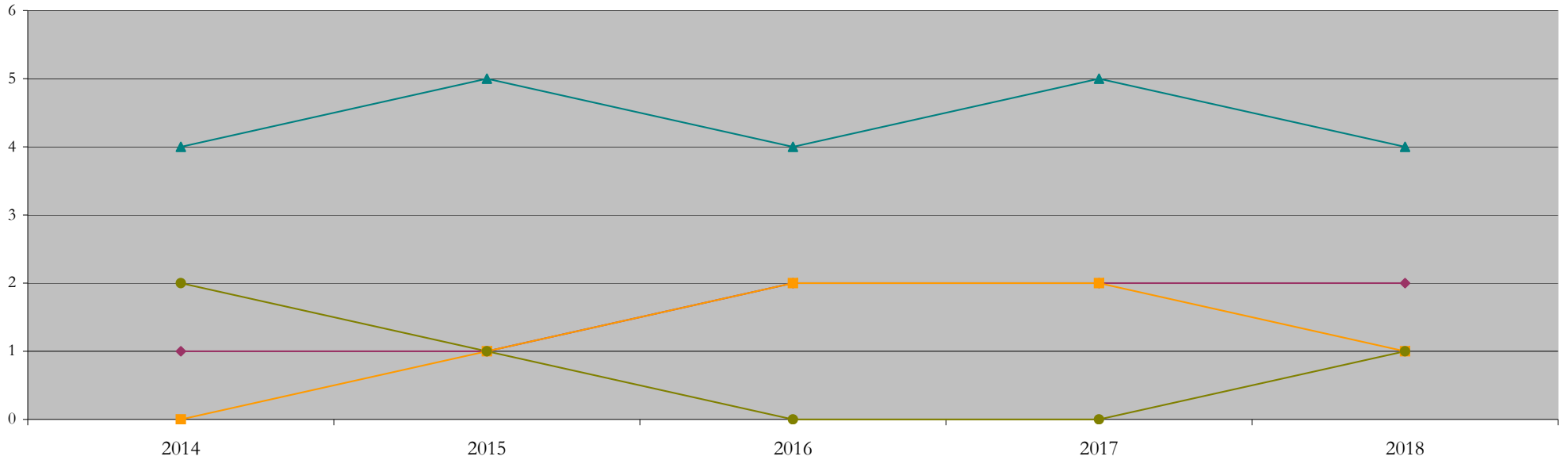
Total Enrollment (includes secondary curriculum)

by Race/Ethnicity

Pathology_PHD [20FS1548PHD]

Fall 2014 - Fall 2018

Fall Semester Year	Total	Under Represented Minorities (URM)										Asian	Native Hawaiian or Pacific Islander	White	Two or More Races	International	Race/Eth Not Reported			
		American Indian or Alaska Native		Black or African American		Hispanic / Latino		URM Total												
		Count	%	Count	%	Count	%	Count	%											
2014	7	0	0.0	1	14.3	0	0.0	1	14.3	0	0.0	0	0.0	4	57.1	0	0.0	2	28.6	0
2015	8	0	0.0	1	12.5	0	0.0	1	12.5	1	12.5	0	0.0	5	62.5	0	0.0	1	12.5	0
2016	8	0	0.0	0	0.0	2	25.0	2	25.0	2	25.0	0	0.0	4	50.0	0	0.0	0	0.0	0
2017	9	0	0.0	0	0.0	2	22.2	2	22.2	2	22.2	0	0.0	5	55.6	0	0.0	0	0.0	0
2018	8	0	0.0	0	0.0	2	25.0	2	25.0	1	12.5	0	0.0	4	50.0	0	0.0	1	12.5	0



Notes: 1) URM stands for Under-Represented Minority and includes American Indian or Alaska Native; Black or African-American; Hispanic / Latino race/ethnicity groups
 2) Individual URM groups, Native Hawaiian Pacific Islander, Two or More Races, and Other race/ethnicity categories left off this chart due to relatively low numbers

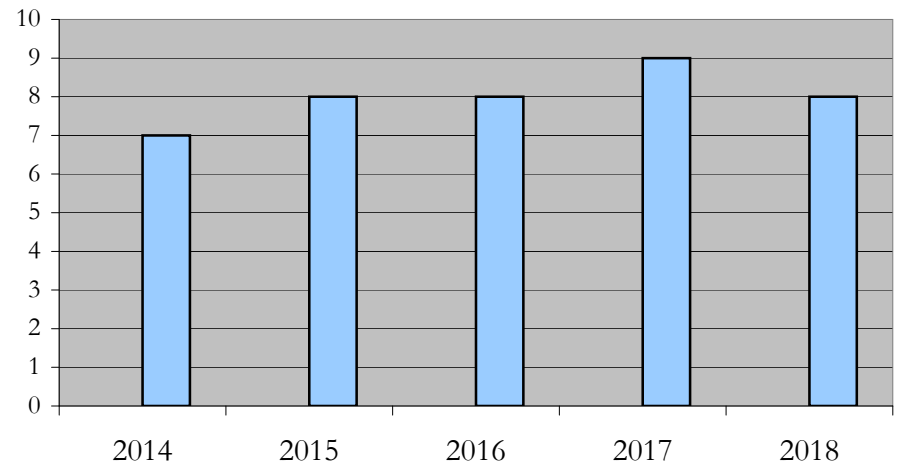
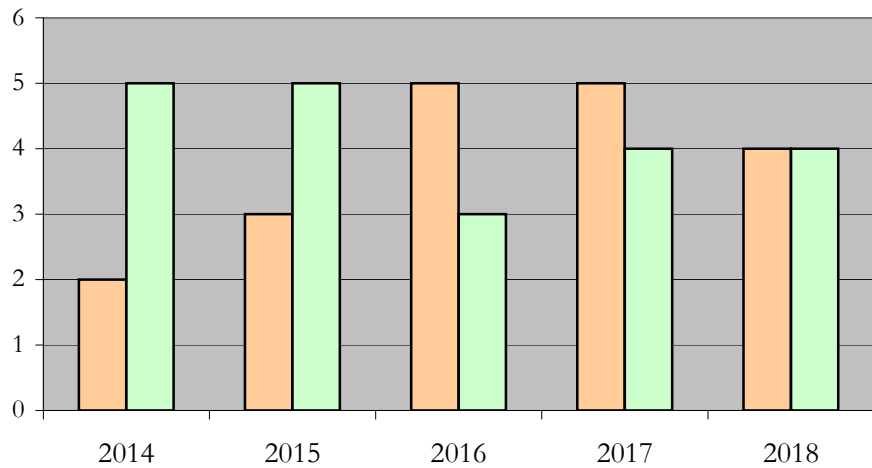
Total Enrollment (includes secondary curriculum)

by Student Type, Gender, and Enrollment Time

Pathology_PHD [20FS1548PHD]

Fall 2014 - Fall 2018

Fall Semester Year	Total	New		Continuing		Male		Female		Gender Not Reported	Part-time		Full-time	
		Count	%	Count	%	Count	%	Count	%	Count	Count	%	Count	%
2014	7	0	0.0	7	100.0	2	28.6	5	71.4	0	0	0.0	7	100.0
2015	8	1	12.5	7	87.5	3	37.5	5	62.5	0	0	0.0	8	100.0
2016	8	3	37.5	5	62.5	5	62.5	3	37.5	0	0	0.0	8	100.0
2017	9	0	0.0	9	100.0	5	55.6	4	44.4	0	0	0.0	9	100.0
2018	8	0	0.0	8	100.0	4	50.0	4	50.0	0	0	0.0	8	100.0



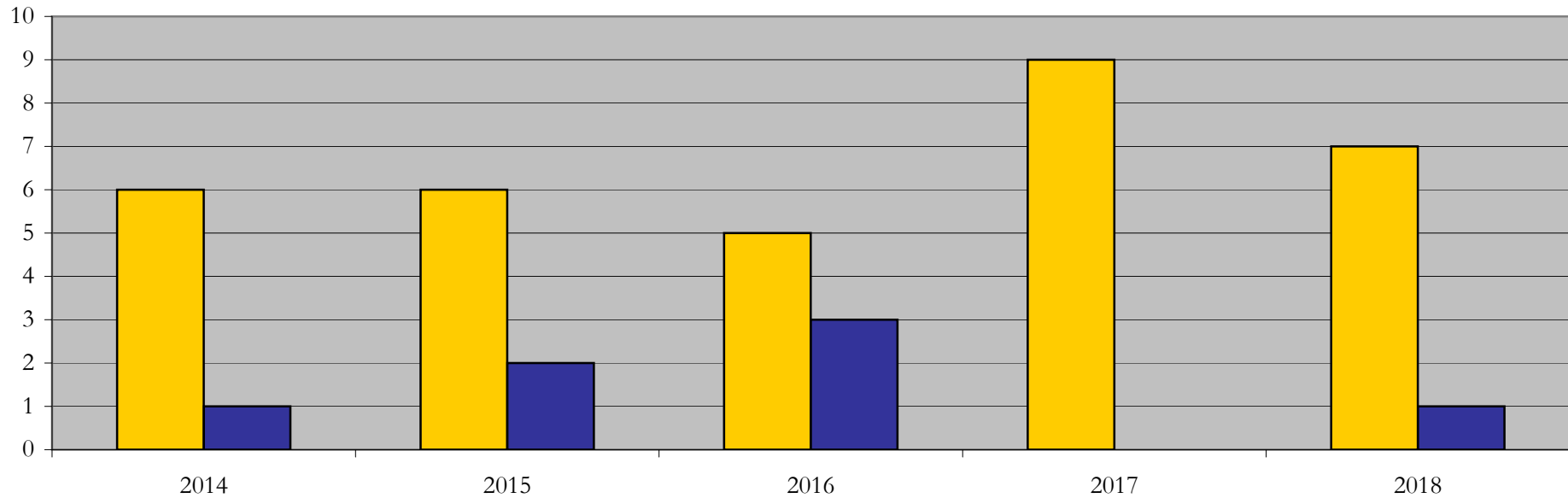
Enrollment & Degrees Conferred

by Primary/Secondary, Average Age, State Residency

Pathology_PHD [20FS1548PHD]

Fall 2014 - Fall 2018

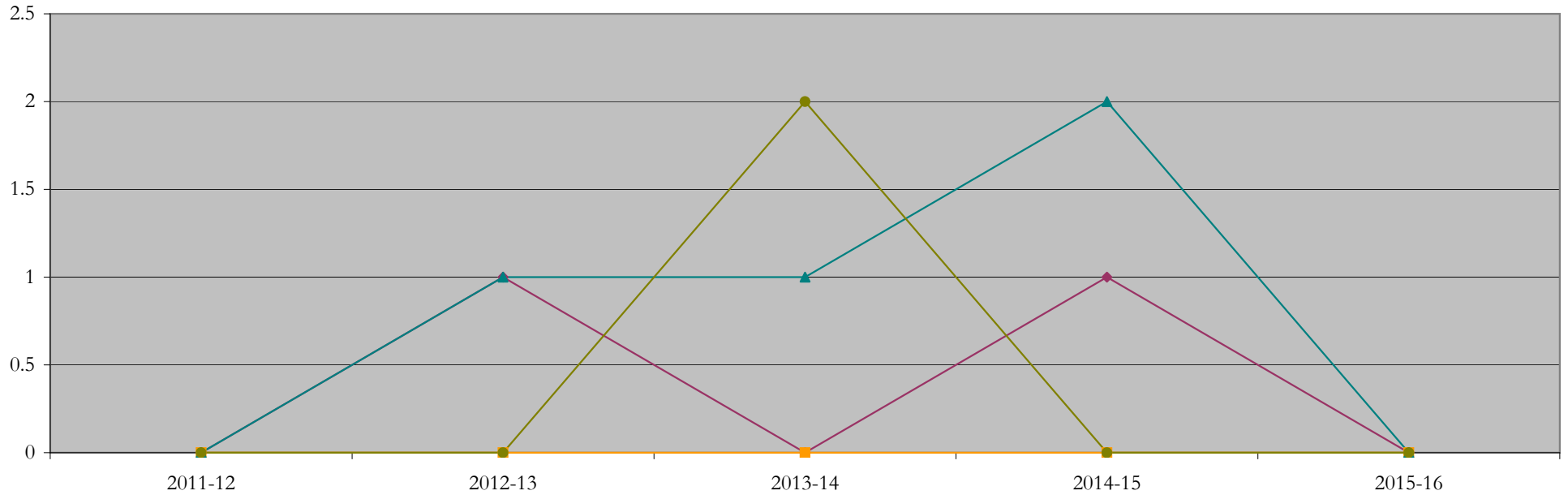
Fall Semester Year	Enrollment			Average Age			State Residency of Total Enrollment					
	Total	Primary	Secondary	Fall New Enrollment	Fall Continuing Enrollment	Academic Year Graduating Class	Residents			Non-Residents		
							Total Enrollment	New Enrollment	Continuing Enrollment	Total Enrollment	New Enrollment	Continuing Enrollment
2014	7	7	0	28	28	0	6	0	6	1	0	1
2015	8	8	0	29	29	26	6	0	6	2	1	1
2016	8	8	0	30	26	28	5	0	5	3	3	0
2017	9	9	0	0	28	30	9	0	9	0	0	0
2018	8	8	0	0	30	0	7	0	7	1	0	1



Degrees Conferred by Race/Ethnicity

Pathology_PHD [20FS1548PHD]
AY2011-12 through 2015-16

Academic Year	Total	Under Represented Minorities (URM)								Asian		Native Hawaiian or Pacific		White		Two or More Races		International		Not Reported
		American Indian or Alaska Native		Black or African American		Hispanic / Latino		URM Total		Count	%	Count	%	Count	%	Count	%	Count	%	
		Count	%	Count	%	Count	%	Count	%											
2013 - 2014	0	0	0.0	0	0.0	0	0.0	0	0.0	0	0.0	0	0.0	0	0.0	0	0.0	0	0.0	0
2014 - 2015	2	0	0.0	1	50.0	0	0.0	1	50.0	0	0.0	0	0.0	1	50.0	0	0.0	0	0.0	0
2015 - 2016	3	0	0.0	0	0.0	0	0.0	0	0.0	0	0.0	0	0.0	1	33.3	0	0.0	2	66.7	0
2016 - 2017	3	0	0.0	1	33.3	0	0.0	1	33.3	0	0.0	0	0.0	2	66.7	0	0.0	0	0.0	0
2017 - 2018	0	0	0.0	0	0.0	0	0.0	0	0.0	0	0.0	0	0.0	0	0.0	0	0.0	0	0.0	0



Notes: 1) URM stands for Under-Represented Minority and includes American Indian or Alaska Native; Black or African-American; Hispanic / Latino race/ethnicity groups
2) Individual URM groups, Native Hawaiian Pacific Islander, Two or More Races, and Other race/ethnicity categories left off this chart due to relatively low numbers

Degrees Conferred

by Gender

Pathology_PHD [20FS1548PHD]

AY2011-12 through 2015-16

Academic Year	Total	Male		Female		Not Reported
		Count	%	Count	%	
2013 - 2014	0	0	0.0	0	0.0	0
2014 - 2015	2	1	50.0	1	50.0	0
2015 - 2016	3	1	33.3	2	66.7	0
2016 - 2017	3	1	33.3	2	66.7	0
2017 - 2018	0	0	0.0	0	0.0	0

