

Matriculation

Diversity Pipeline

Biochemistry_and_Molecular_Genetics_PHD [20FS4050PHD]

Fall 2014 - Fall 2018

Fall Semester Year	Applied					Admitted					Non-URM Admitted to Applied Yield %	URM Admitted to Applied Yield %	New Enrollment					Non-URM Enrolled to Admitted Yield %	URM Enrolled to Admitted Yield %	Total Enrollment				
	Grand Total	Non-URM Total		URM Total		Grand Total	Non-URM Total		URM Total				Grand Total	Non-URM Total		URM Total				Grand Total	Non-URM Total		URM Total	
		Count	%	Count	%		Count	%	Count	%				Count	%	Count	%				Count	%	Count	%
	Count	%	Count	%	Count	%	Count	%	Count	%			Count	%	Count	%	Count			%	Count	%		
2014	124	114	91.9%	10	8.1%	7	6	85.7%	1	14.3%	5.3%	10.0%	7	6	85.7%	1	14.3%	100.0%	100.0%	39	36	92.3%	3	7.7%
2015	95	91	95.8%	4	4.2%	7	7	100.0%	0	0.0%	7.7%	0.0%	4	4	100.0%	0	0.0%	57.1%	0.0%	34	33	97.1%	1	2.9%
2016	86	82	95.3%	4	4.7%	7	6	85.7%	1	14.3%	7.3%	25.0%	5	4	80.0%	1	20.0%	66.7%	100.0%	40	37	92.5%	3	7.5%
2017	93	85	91.4%	8	8.6%	14	11	78.6%	3	21.4%	12.9%	37.5%	7	7	100.0%	0	0.0%	63.6%	0.0%	29	28	96.6%	1	3.4%
2018	133	125	94.0%	8	6.0%	26	24	92.3%	2	7.7%	19.2%	25.0%	11	10	90.9%	1	9.1%	41.7%	50.0%	43	40	93.0%	3	7.0%
Average	106	99	93.6%	7	6.4%	12	11	88.5%	1	11.5%	10.9%	20.6%	7	6	91.2%	1	8.8%	57.4%	42.9%	37	35	94.1%	2.2	5.9%

Note: URM stands for Under-Represented Minority and includes American Indian or Alaska Native; Black or African-American; Hispanic / Latino race/ethnicity groups

Applications, Admission, & New Enrollment Yields

by Race/Ethnicity & Gender

Biochemistry_and_Molecular_Genetics_PHD [20FS4050PHD]

Fall 2014 - Fall 2018

	Fall Semester Year	Total	Under Represented Minorities (URM)										Race/Eth Not Reported	Male	Female											
			American Indian or Alaska Native		Black or African American		Hispanic / Latino		URM Total		Asian					Native Hawaiian or Pacific Islander		White		Two or More Races		International				
Applied	2014	124	0	4	6	10	7	0	33	3	70	1	52	71												
	2015	95	0	1	3	4	7	0	29	3	51	1	36	59												
Admitted	2016	86	1	0	3	4	3	0	20	1	57	1	41	45												
	2017	93	0	2	6	8	5	0	14	1	62	3	43	49												
Enrolled	2018	133	0	1	7	8	6	0	18	2	69	30	52	81												
		Count	% Yield	Count	% Yield	Count	% Yield	Count	% Yield	Count	% Yield	Count	% Yield	Count	% Yield	Count	% Yield	Count	% Yield	Count	% Yield					
Applied	2014	7	5.6	0	0.0	0	0.0	1	16.7	1	10.0	1	14.3	0	0.0	5	15.2	0	0.0	0	0.0	0	4	7.7	3	4.2
	2015	7	7.4	0	0.0	0	0.0	0	0.0	0	0.0	1	14.3	0	0.0	3	10.3	0	0.0	3	5.9	0	2	5.6	5	8.5
Admitted	2016	7	8.1	0	0.0	0	0.0	1	33.3	1	25.0	0	0.0	0	0.0	2	10.0	0	0.0	4	7.0	0	5	12.2	2	4.4
	2017	14	15.1	0	0.0	0	0.0	3	50.0	3	37.5	1	20.0	0	0.0	5	35.7	0	0.0	5	8.1	0	6	14.0	8	16.3
Enrolled	2018	26	19.5	0	0.0	0	0.0	2	28.6	2	25.0	0	0.0	0	0.0	7	38.9	0	0.0	8	11.6	9	12	23.1	14	17.3
		Count	% Yield	Count	% Yield	Count	% Yield	Count	% Yield	Count	% Yield	Count	% Yield	Count	% Yield	Count	% Yield	Count	% Yield	Count	% Yield	Count	% Yield	Count	% Yield	Count
Applied	2014	7	100.0	0	0.0	0	0.0	1	100.0	1	100.0	1	100.0	0	0.0	5	100.0	0	0.0	0	0.0	0	4	100.0	3	100.0
	2015	4	57.1	0	0.0	0	0.0	0	0.0	0	0.0	0	0.0	0	0.0	2	66.7	0	0.0	2	66.7	0	2	100.0	2	40.0
Admitted	2016	5	71.4	0	0.0	0	0.0	1	100.0	1	100.0	0	0.0	0	0.0	1	50.0	0	0.0	3	75.0	0	4	80.0	1	50.0
	2017	7	50.0	0	0.0	0	0.0	0	0.0	0	0.0	1	100.0	0	0.0	2	40.0	0	0.0	4	80.0	0	3	50.0	4	50.0
Enrolled	2018	11	42.3	0	0.0	0	0.0	1	50.0	1	50.0	0	0.0	0	0.0	6	85.7	0	0.0	4	50.0	0	5	41.7	6	42.9
		Count	% Yield	Count	% Yield	Count	% Yield	Count	% Yield	Count	% Yield	Count	% Yield	Count	% Yield	Count	% Yield	Count	% Yield	Count	% Yield	Count	% Yield	Count	% Yield	Count

Notes:

- 1) URM stands for Under-Represented Minority and includes American Indian or Alaska Native; Black or African-American; Hispanic / Latino race/ethnicity groups
- 2) Unreported Gender identification is not shown; Male and Female total may not match Total
- 3) In rare situations, the "% Yield" columns may be greater than 100. There are three potential reasons for this:
 - a) Students that received Graduate College approved transfers may not have an admission record for the program that they enrolled into.
 - b) Students with a secondary curriculum enrollment may not have an admission record for that secondary program.
 - c) Students who were newly enrolled in the summer term prior to the fall were added to the fall new enrollment totals.

Applications, Admission, & New Enrollment Yields, cont. by Race/Ethnicity & Gender

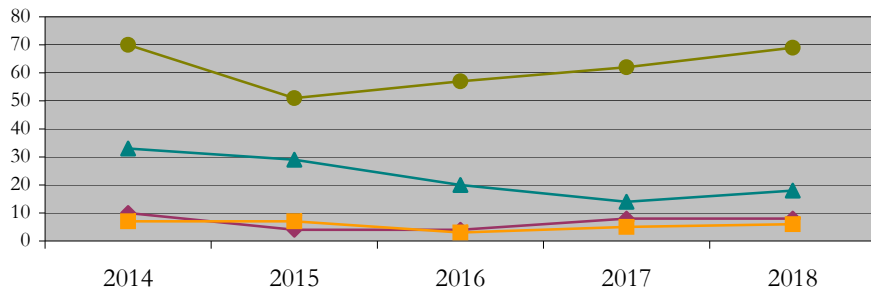
Biochemistry_and_Molecular_Genetics_PHD [20FS4050PHD]

Fall 2014 - Fall 2018

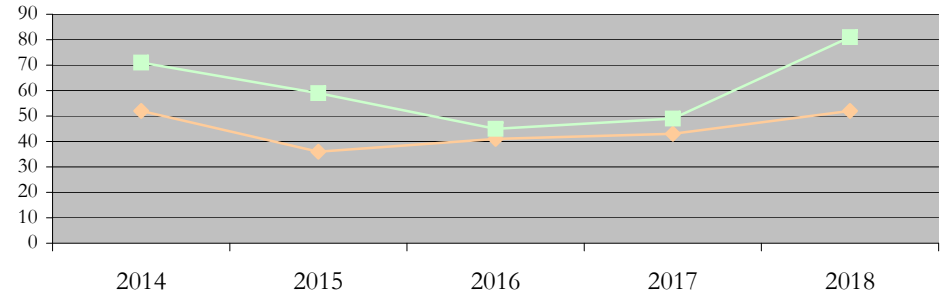
◆ URM Total ■ Asian ▲ White ● International

◆ Male ■ Female

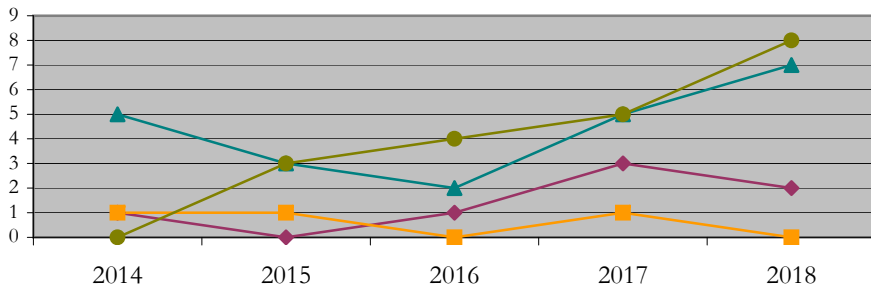
Applications by Race/Ethnicity



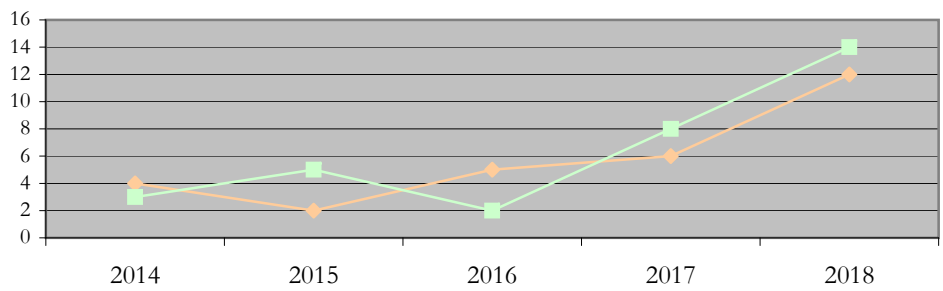
Applications by Gender



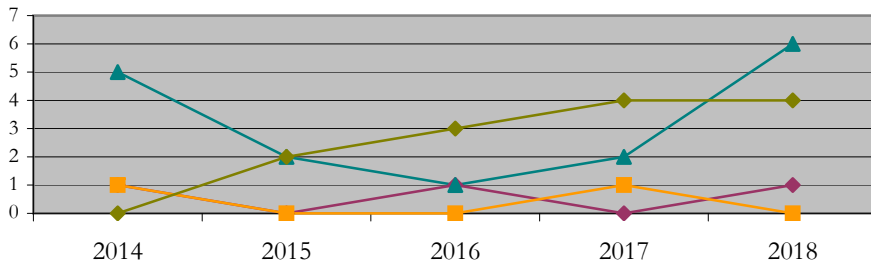
Admissions by Race/Ethnicity



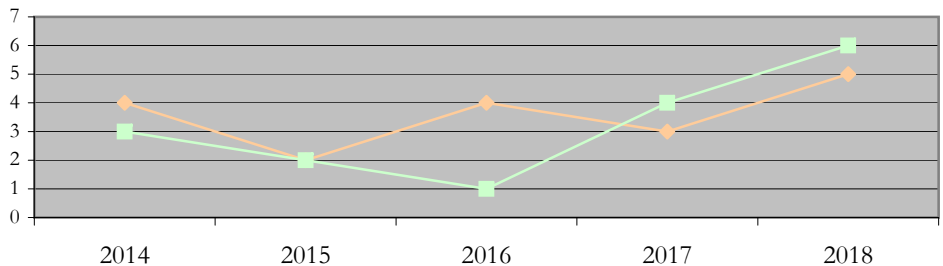
Admissions by Gender



New Enrollments by Race/Ethnicity



New Enrollments by Gender



Notes: 1) URM stands for Under-Represented Minority and includes American Indian or Alaska Native; Black or African-American; Hispanic / Latino race/ethnicity groups
2) Individual URM groups, Native Hawaiian Pacific Islander, Two or More Races, and Other race/ethnicity categories left off these charts due to relatively low numbers

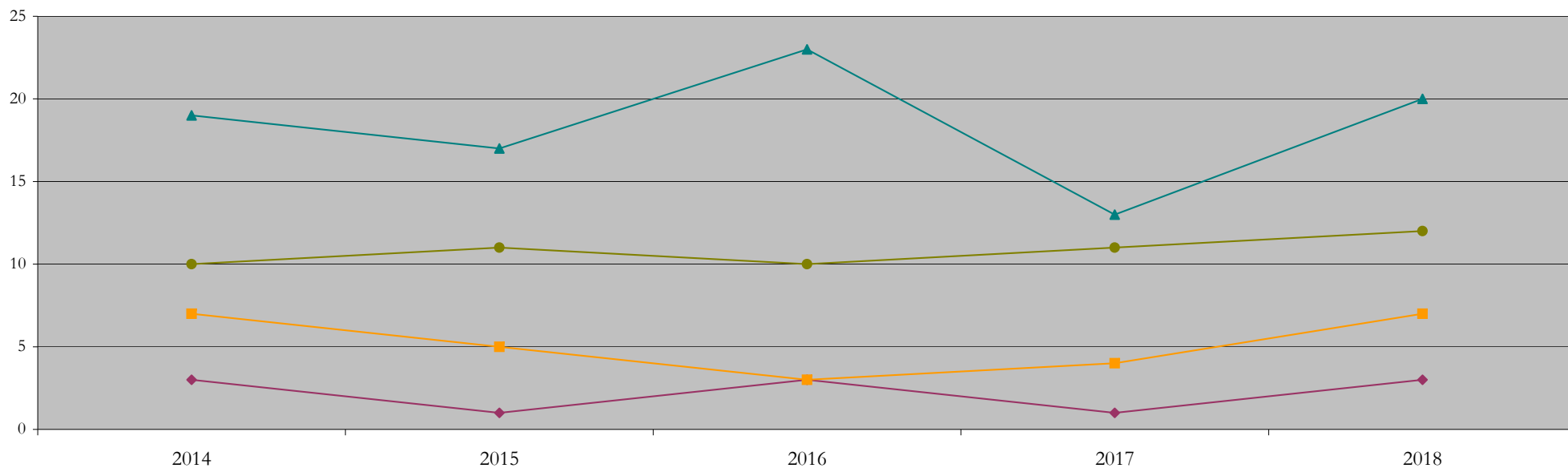
Total Enrollment (includes secondary curriculum)

by Race/Ethnicity

Biochemistry_and_Molecular_Genetics_PHD [20FS4050PHD]

Fall 2014 - Fall 2018

Fall Semester Year	Total	Under Represented Minorities (URM)																		
		American Indian or Alaska Native		Black or African American		Hispanic / Latino		URM Total		Asian		Native Hawaiian or Pacific Islander		White		Two or More Races		International		Race/Eth Not Reported
		Count	%	Count	%	Count	%	Count	%	Count	%	Count	%	Count	%	Count	%	Count	%	Count
2014	39	0	0.0	0	0.0	3	7.7	3	7.7	7	17.9	0	0.0	19	48.7	0	0.0	10	25.6	0
2015	34	0	0.0	0	0.0	1	2.9	1	2.9	5	14.7	0	0.0	17	50.0	0	0.0	11	32.4	0
2016	40	0	0.0	1	2.5	2	5.0	3	7.5	3	7.5	0	0.0	23	57.5	1	2.5	10	25.0	0
2017	29	0	0.0	0	0.0	1	3.4	1	3.4	4	13.8	0	0.0	13	44.8	0	0.0	11	37.9	0
2018	43	0	0.0	0	0.0	3	7.0	3	7.0	7	16.3	0	0.0	20	46.5	1	2.3	12	27.9	0



Notes: 1) URM stands for Under-Represented Minority and includes American Indian or Alaska Native; Black or African-American; Hispanic / Latino race/ethnicity groups
 2) Individual URM groups, Native Hawaiian Pacific Islander, Two or More Races, and Other race/ethnicity categories left off this chart due to relatively low numbers

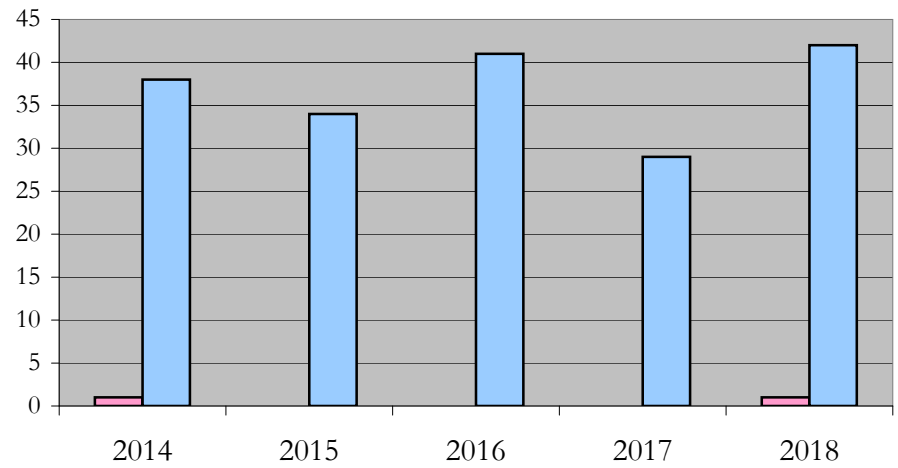
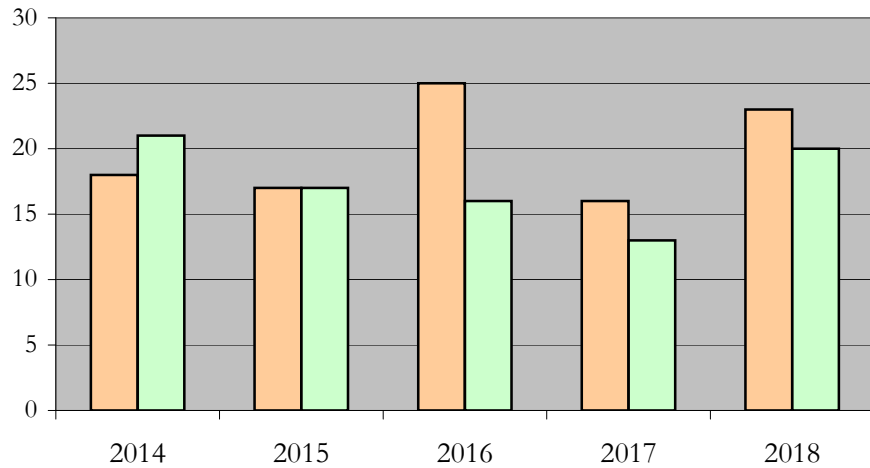
Total Enrollment (includes secondary curriculum)

by Student Type, Gender, and Enrollment Time

Biochemistry_and_Molecular_Genetics_PHD [20FS4050PHD]

Fall 2014 - Fall 2018

Fall Semester Year	Total	New		Continuing		Male		Female		Gender Not Reported	Part-time		Full-time	
		Count	%	Count	%	Count	%	Count	%	Count	Count	%	Count	%
2014	39	7	17.9	32	82.1	18	46.2	21	53.8	0	1	2.6	38	97.4
2015	34	4	11.8	30	88.2	17	50.0	17	50.0	0	0	0.0	34	100.0
2016	40	5	12.5	35	87.5	25	62.5	16	40.0	-1	0	0.0	41	102.5
2017	29	7	24.1	22	75.9	16	55.2	13	44.8	0	0	0.0	29	100.0
2018	43	11	25.6	32	74.4	23	53.5	20	46.5	0	1	2.3	42	97.7



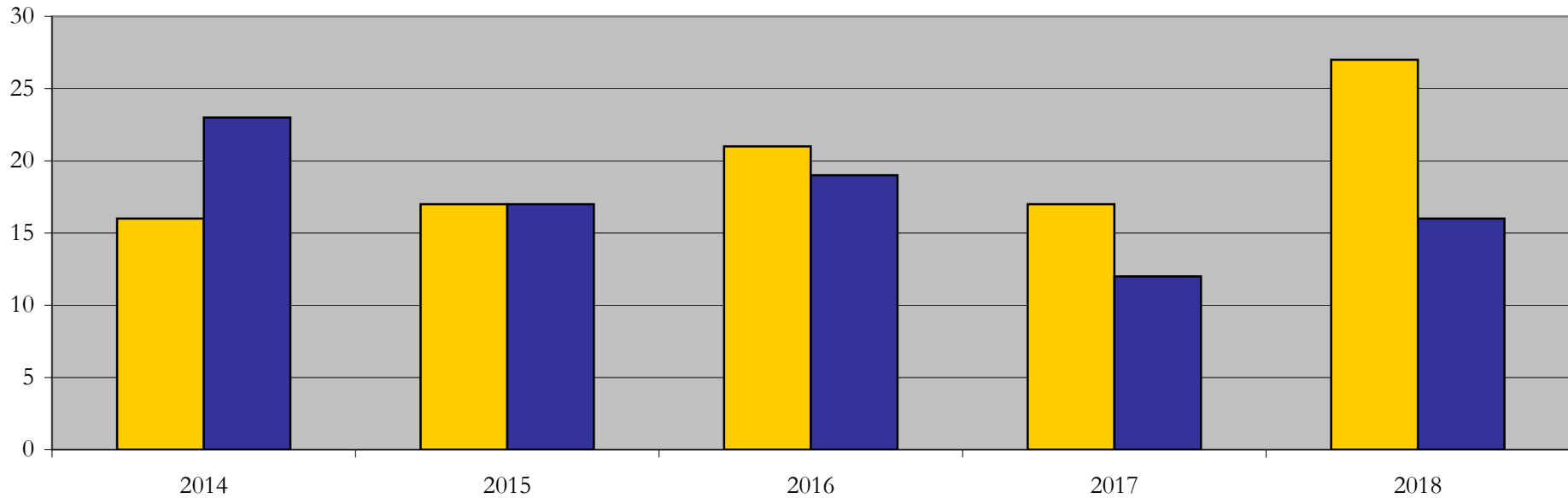
Enrollment & Degrees Conferred

by Primary/Secondary, Average Age, State Residency

Biochemistry_and_Molecular_Genetics_PHD [20FS4050PHD]

Fall 2014 - Fall 2018

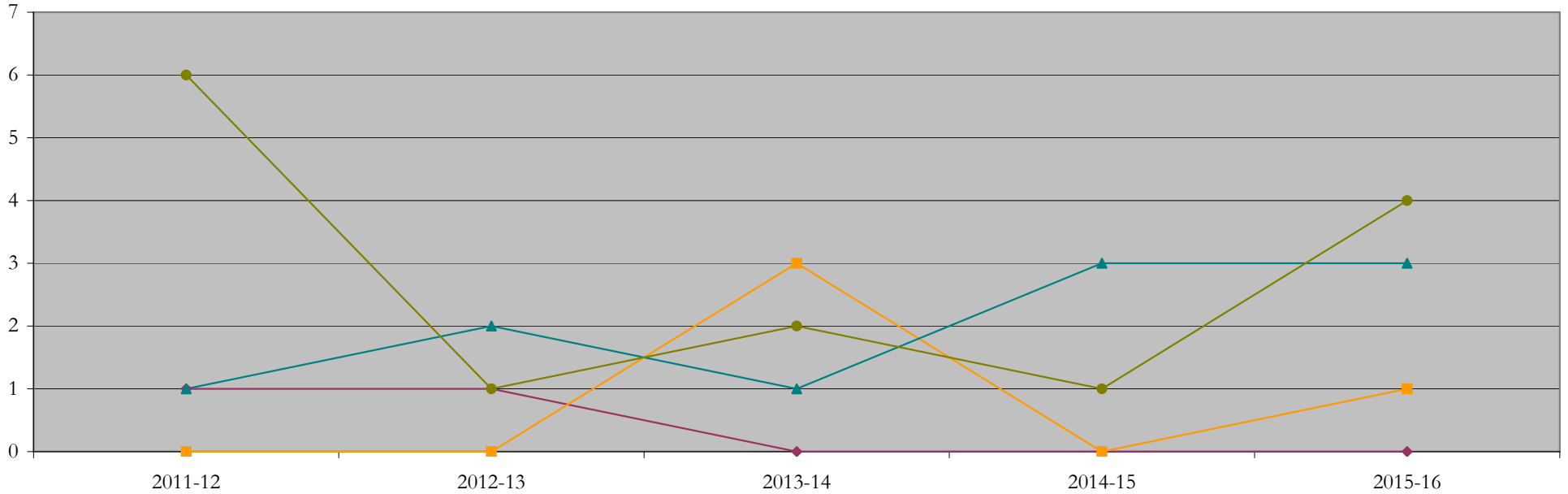
Fall Semester Year	Enrollment			Average Age			State Residency of Total Enrollment					
	Total	Primary	Secondary	Fall New Enrollment	Fall Continuing Enrollment	Academic Year Graduating Class	Residents			Non-Residents		
							Total Enrollment	New Enrollment	Continuing Enrollment	Total Enrollment	New Enrollment	Continuing Enrollment
2014	39	39	0	27	28	31	16	0	16	23	7	16
2015	34	34	0	28	29	29	17	1	16	17	3	14
2016	40	40	0	27	28	30	21	0	21	19	5	14
2017	29	29	0	25	29	31	17	7	10	12	0	12
2018	43	43	0	25	28	29	27	10	17	16	1	15



Degrees Conferred by Race/Ethnicity

Biochemistry_and_Molecular_Genetics_PHD [20FS4050PHD]
AY2011-12 through 2015-16

Academic Year	Total	Under Represented Minorities (URM)								Asian		Native Hawaiian or Pacific		White		Two or More Races		International		Not Reported
		American Indian or Alaska Native		Black or African American		Hispanic / Latino		URM Total		Count	%	Count	%	Count	%	Count	%	Count	%	
		Count	%	Count	%	Count	%	Count	%											
2013 - 2014	8	0	0.0	1	12.5	0	0.0	1	12.5	0	0.0	0	0.0	1	12.5	0	0.0	6	75.0	0
2014 - 2015	4	0	0.0	0	0.0	1	25.0	1	25.0	0	0.0	0	0.0	2	50.0	0	0.0	1	25.0	0
2015 - 2016	6	0	0.0	0	0.0	0	0.0	0	0.0	3	50.0	0	0.0	1	16.7	0	0.0	2	33.3	0
2016 - 2017	4	0	0.0	0	0.0	0	0.0	0	0.0	0	0.0	0	0.0	3	75.0	0	0.0	1	25.0	0
2017 - 2018	8	0	0.0	0	0.0	0	0.0	0	0.0	1	12.5	0	0.0	3	37.5	0	0.0	4	50.0	0



Notes: 1) URM stands for Under-Represented Minority and includes American Indian or Alaska Native; Black or African-American; Hispanic / Latino race/ethnicity groups
2) Individual URM groups, Native Hawaiian Pacific Islander, Two or More Races, and Other race/ethnicity categories left off this chart due to relatively low numbers

Degrees Conferred

by Gender

Biochemistry_and_Molecular_Genetics_PHD [20FS4050PHD]

AY2011-12 through 2015-16

Academic Year	Total	Male		Female		Not Reported
		Count	%	Count	%	
2013 - 2014	8	4	50.0	4	50.0	0
2014 - 2015	4	2	50.0	2	50.0	0
2015 - 2016	6	1	16.7	5	83.3	0
2016 - 2017	4	2	50.0	2	50.0	0
2017 - 2018	8	5	62.5	3	37.5	0

