

Matriculation

Diversity Pipeline

Special_Education_MED [20FS0093MED]

Fall 2014 - Fall 2018

Fall Semester Year	Applied					Admitted					Non-URM Admitted to Applied Yield %	URM Admitted to Applied Yield %	New Enrollment					Non-URM Enrolled to Admitted Yield %	URM Enrolled to Admitted Yield %	Total Enrollment				
	Grand Total	Non-URM Total		URM Total		Grand Total	Non-URM Total		URM Total				Grand Total	Non-URM Total		URM Total				Grand Total	Non-URM Total		URM Total	
		Count	%	Count	%		Count	%	Count	%				Count	%	Count	%				Count	%	Count	%
	Count	%	Count	%	Count	%	Count	%	Count	%			Count	%	Count	%	Count			%	Count	%	Count	%
2014	27	19	70.4%	8	29.6%	16	13	81.3%	3	18.8%	68.4%	37.5%	10	8	80.0%	2	20.0%	61.5%	66.7%	71	56	78.9%	15	21.1%
2015	38	30	78.9%	8	21.1%	15	11	73.3%	4	26.7%	36.7%	50.0%	12	10	83.3%	2	16.7%	90.9%	50.0%	78	55	70.5%	23	29.5%
2016	35	30	85.7%	5	14.3%	21	17	81.0%	4	19.0%	56.7%	80.0%	14	10	71.4%	4	28.6%	58.8%	100.0%	95	72	75.8%	23	24.2%
2017	42	31	73.8%	11	26.2%	28	24	85.7%	4	14.3%	77.4%	36.4%	20	17	85.0%	3	15.0%	70.8%	75.0%	81	61	75.3%	20	24.7%
2018	45	34	75.6%	11	24.4%	41	31	75.6%	10	24.4%	91.2%	90.9%	32	22	68.8%	10	31.3%	71.0%	100.0%	96	68	70.8%	28	29.2%
Average	37	29	77.0%	9	23.0%	24	19	79.3%	5	20.7%	66.7%	58.1%	18	13	76.1%	4	23.9%	69.8%	84.0%	84	62	74.1%	21.8	25.9%

Note: URM stands for Under-Represented Minority and includes American Indian or Alaska Native; Black or African-American; Hispanic / Latino race/ethnicity groups

Applications, Admission, & New Enrollment Yields

by Race/Ethnicity & Gender

Special_Education_MED [20FS0093MED]

Fall 2014 - Fall 2018

	Fall Semester Year	Total	Under Represented Minorities (URM)										Race/Eth Not Reported	Male	Female												
			American Indian or Alaska Native		Black or African American		Hispanic / Latino		URM Total		Asian					Native Hawaiian or Pacific Islander		White		Two or More Races		International					
		Count	% Yield	Count	% Yield	Count	% Yield	Count	% Yield	Count	% Yield	Count	% Yield	Count	% Yield	Count	% Yield	Count	% Yield	Count	% Yield	Count	% Yield	Count	% Yield		
Applied	2014	27		0		1		7		8		2		0		16		1		0		0		7		20	
	2015	38		0		4		4		8		0		0		26		0		3		1		13		25	
	2016	35		0		2		3		5		3		0		23		0		3		1		12		23	
	2017	42		0		7		4		11		1		0		28		0		2		0		13		29	
	2018	45		0		3		8		11		4		1		22		0		5		2		4		41	
Admitted	2014	16	59.3	0	0.0	0	0.0	3	42.9	3	37.5	1	50.0	0	0.0	12	75.0	0	0.0	0	0.0	0		4	57.1	12	60.0
	2015	15	39.5	0	0.0	2	50.0	2	50.0	4	50.0	0	0.0	0	0.0	11	42.3	0	0.0	0	0.0	0		6	46.2	9	36.0
	2016	21	60.0	0	0.0	2	100.0	2	66.7	4	80.0	1	33.3	0	0.0	16	69.6	0	0.0	0	0.0	0		10	83.3	11	47.8
	2017	28	66.7	0	0.0	2	28.6	2	50.0	4	36.4	0	0.0	0	0.0	22	78.6	0	0.0	2	100.0	0		9	69.2	19	65.5
	2018	41	91.1	0	0.0	2	66.7	8	100.0	10	90.9	4	100.0	1	100.0	21	95.5	0	0.0	4	80.0	1		3	75.0	38	92.7
Enrolled	2014	10	62.5	0	0.0	0	0.0	2	66.7	2	66.7	1	100.0	0	0.0	7	58.3	0	0.0	0	0.0	0		2	50.0	8	66.7
	2015	12	80.0	0	0.0	0	0.0	2	100.0	2	50.0	0	0.0	0	0.0	10	90.9	0	0.0	0	0.0	0		5	83.3	7	77.8
	2016	14	66.7	0	0.0	2	100.0	2	100.0	4	100.0	1	100.0	0	0.0	9	56.3	0	0.0	0	0.0	0		8	80.0	6	54.5
	2017	20	71.4	0	0.0	2	100.0	1	50.0	3	75.0	0	0.0	0	0.0	16	72.7	0	0.0	1	50.0	0		6	66.7	14	73.7
	2018	32	78.0	0	0.0	2	100.0	8	100.0	10	100.0	3	75.0	1	100.0	16	76.2	0	0.0	2	50.0	0		3	100.0	29	76.3

Notes:

- 1) URM stands for Under-Represented Minority and includes American Indian or Alaska Native; Black or African-American; Hispanic / Latino race/ethnicity groups
- 2) Unreported Gender identification is not shown; Male and Female total may not match Total
- 3) In rare situations, the "% Yield" columns may be greater than 100. There are three potential reasons for this:
 - a) Students that received Graduate College approved transfers may not have an admission record for the program that they enrolled into.
 - b) Students with a secondary curriculum enrollment may not have an admission record for that secondary program.
 - c) Students who were newly enrolled in the summer term prior to the fall were added to the fall new enrollment totals.

Applications, Admission, & New Enrollment Yields, cont. by Race/Ethnicity & Gender

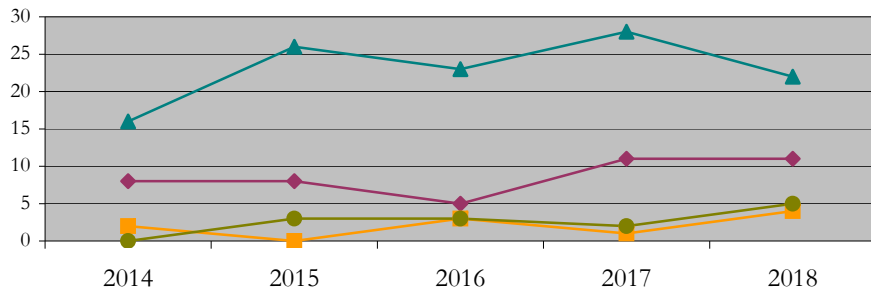
Special_Education_MED [20FS0093MED]

Fall 2014 - Fall 2018

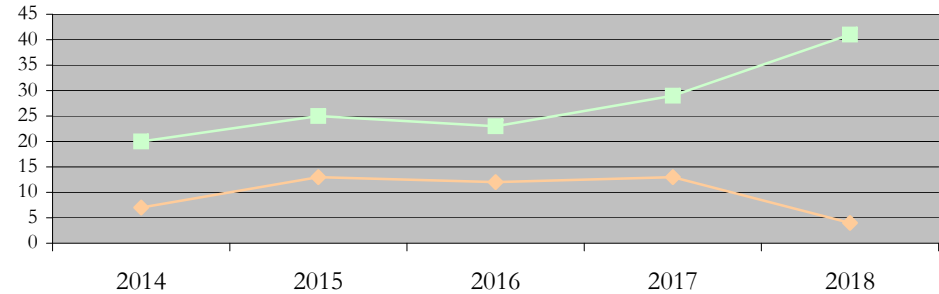
◆ URM Total ■ Asian ▲ White ● International

◆ Male ■ Female

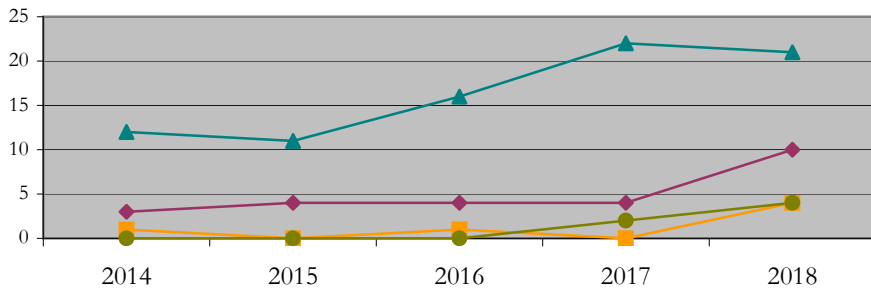
Applications by Race/Ethnicity



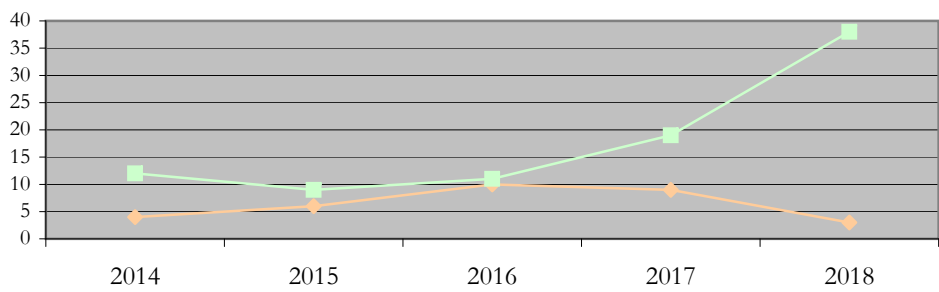
Applications by Gender



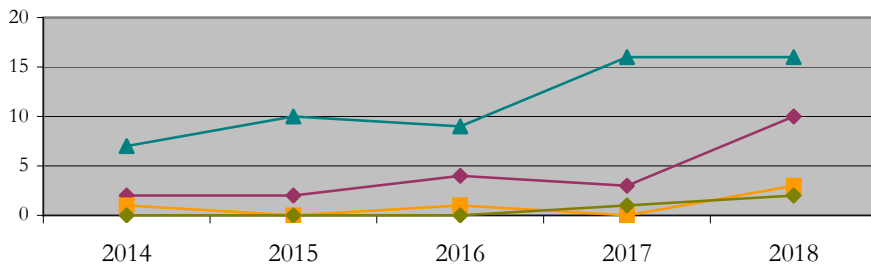
Admissions by Race/Ethnicity



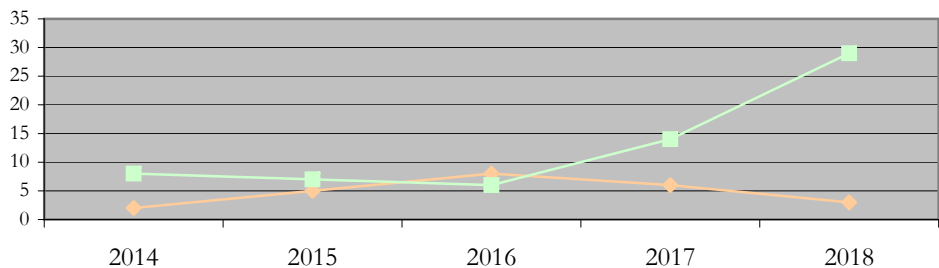
Admissions by Gender



New Enrollments by Race/Ethnicity



New Enrollments by Gender



Notes: 1) URM stands for Under-Represented Minority and includes American Indian or Alaska Native; Black or African-American; Hispanic / Latino race/ethnicity groups
2) Individual URM groups, Native Hawaiian Pacific Islander, Two or More Races, and Other race/ethnicity categories left off these charts due to relatively low numbers

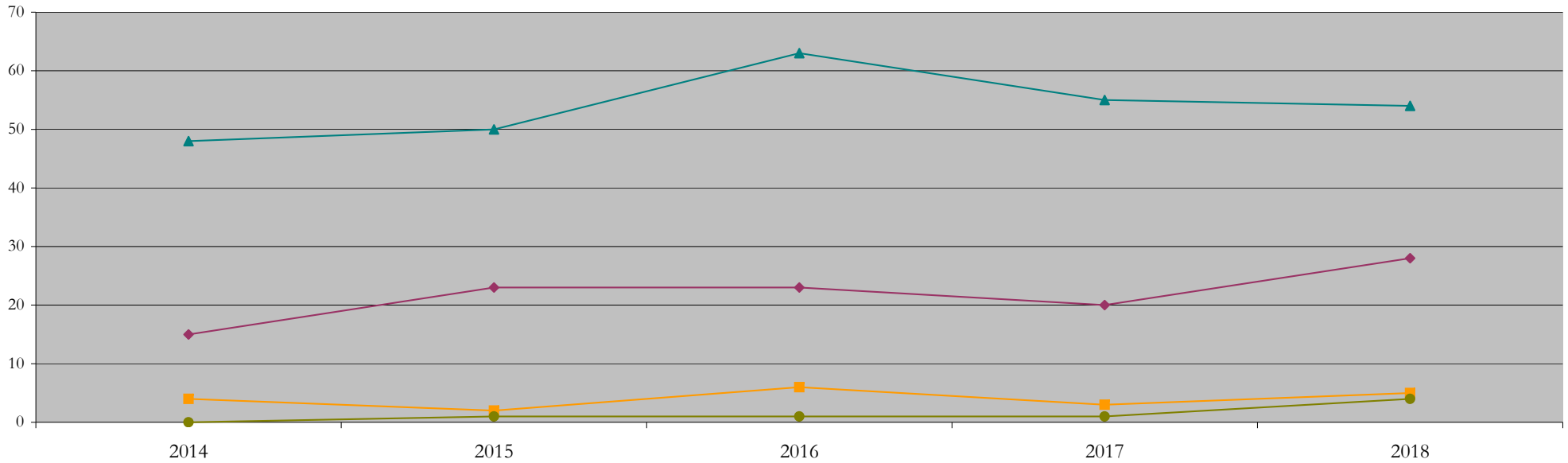
Total Enrollment (includes secondary curriculum)

by Race/Ethnicity

Special_Education_MED [20FS0093MED]

Fall 2014 - Fall 2018

Fall Semester Year	Total	Under Represented Minorities (URM)																		
		American Indian or Alaska Native		Black or African American		Hispanic / Latino		URM Total		Asian		Native Hawaiian or Pacific Islander		White		Two or More Races		International		Race/Eth Not Reported
		Count	%	Count	%	Count	%	Count	%	Count	%	Count	%	Count	%	Count	%	Count	%	Count
2014	71	0	0.0	3	4.2	12	16.9	15	21.1	4	5.6	0	0.0	48	67.6	1	1.4	0	0.0	3
2015	78	0	0.0	8	10.3	15	19.2	23	29.5	2	2.6	0	0.0	50	64.1	0	0.0	1	1.3	2
2016	95	0	0.0	9	9.5	14	14.7	23	24.2	6	6.3	0	0.0	63	66.3	2	2.1	1	1.1	0
2017	81	0	0.0	9	11.1	11	13.6	20	24.7	3	3.7	0	0.0	55	67.9	1	1.2	1	1.2	1
2018	96	0	0.0	14	14.6	14	14.6	28	29.2	5	5.2	1	1.0	54	56.3	2	2.1	4	4.2	2



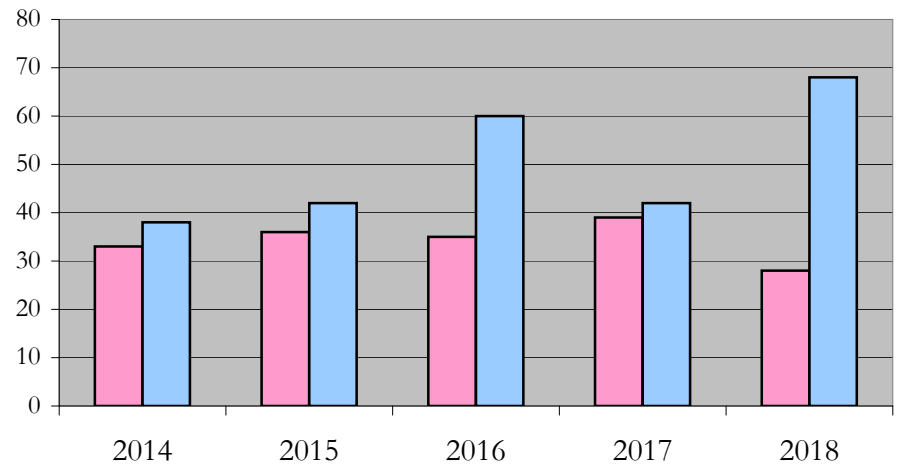
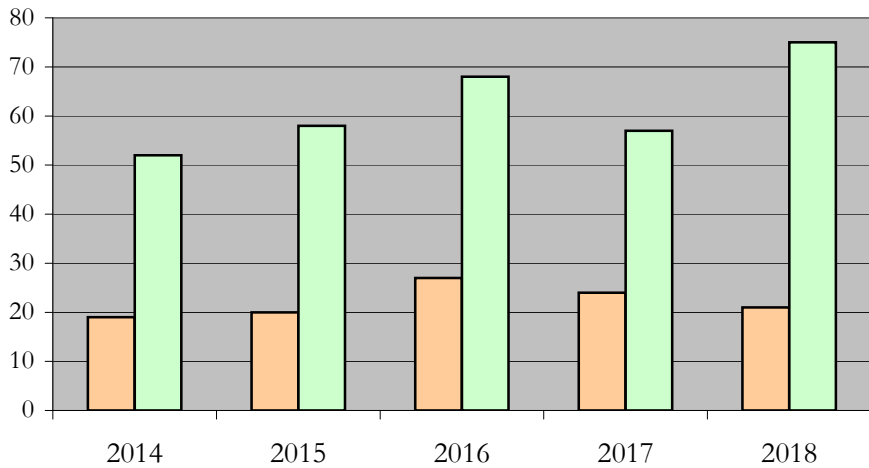
Notes: 1) URM stands for Under-Represented Minority and includes American Indian or Alaska Native; Black or African-American; Hispanic / Latino race/ethnicity groups
 2) Individual URM groups, Native Hawaiian Pacific Islander, Two or More Races, and Other race/ethnicity categories left off this chart due to relatively low numbers

**Total Enrollment (includes secondary curriculum)
by Student Type, Gender, and Enrollment Time**

Special_Education_MED [20FS0093MED]

Fall 2014 - Fall 2018

Fall Semester Year	Total	New		Continuing		Male		Female		Gender Not Reported	Part-time		Full-time	
		Count	%	Count	%	Count	%	Count	%	Count	Count	%	Count	%
2014	71	10	14.1	61	85.9	19	26.8	52	73.2	0	33	46.5	38	53.5
2015	78	12	15.4	66	84.6	20	25.6	58	74.4	0	36	46.2	42	53.8
2016	95	14	14.7	81	85.3	27	28.4	68	71.6	0	35	36.8	60	63.2
2017	81	20	24.7	61	75.3	24	29.6	57	70.4	0	39	48.1	42	51.9
2018	96	32	33.3	64	66.7	21	21.9	75	78.1	0	28	29.2	68	70.8



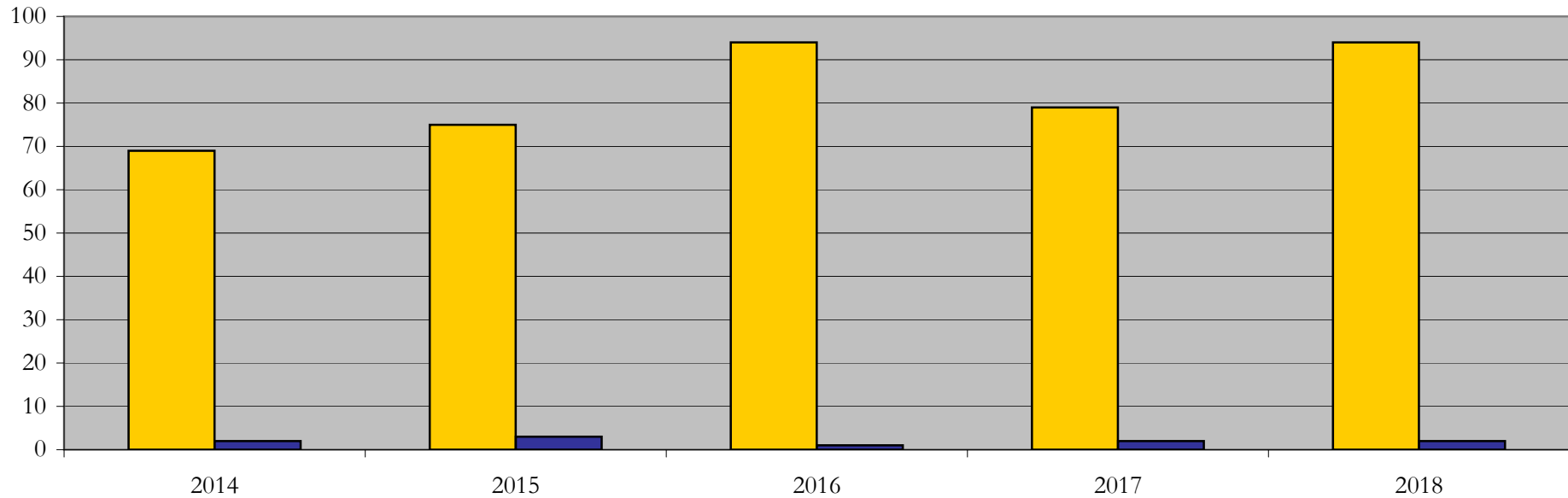
Enrollment & Degrees Conferred

by Primary/Secondary, Average Age, State Residency

Special_Education_MED [20FS0093MED]

Fall 2014 - Fall 2018

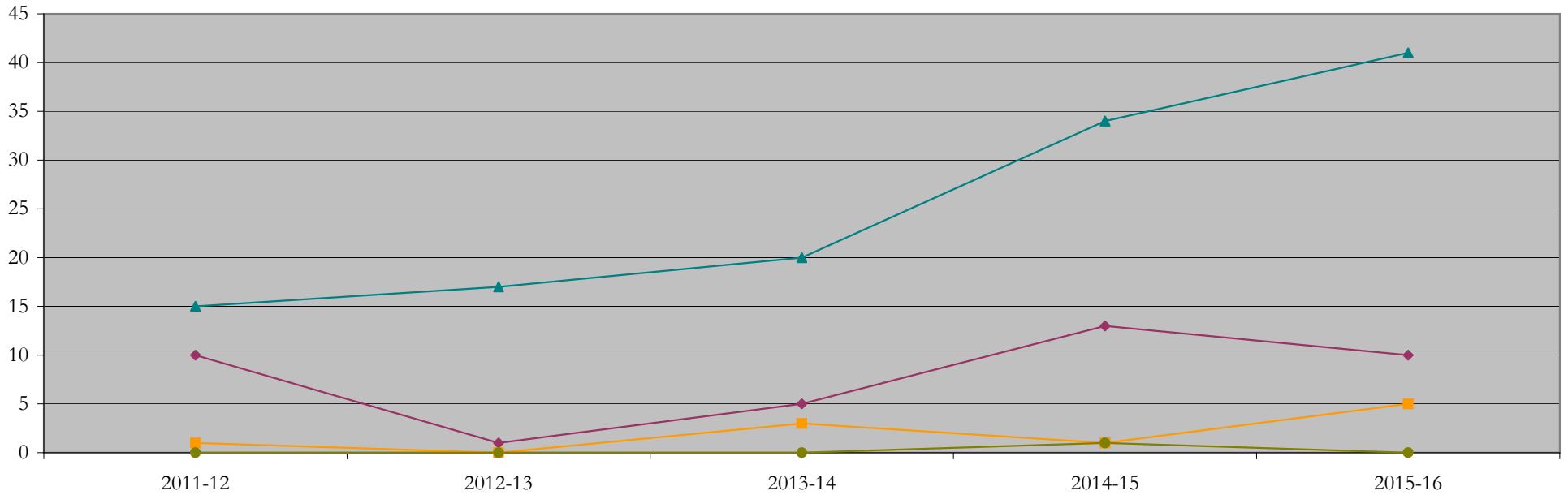
Fall Semester Year	Enrollment			Average Age			State Residency of Total Enrollment					
	Total	Primary	Secondary	Fall New Enrollment	Fall Continuing Enrollment	Academic Year Graduating Class	Residents			Non-Residents		
							Total Enrollment	New Enrollment	Continuing Enrollment	Total Enrollment	New Enrollment	Continuing Enrollment
2014	71	69	2	27	29	28	69	8	61	2	2	0
2015	78	77	1	28	29	28	75	12	63	3	0	3
2016	95	95	0	29	29	29	94	14	80	1	0	1
2017	81	80	1	31	30	28	79	19	60	2	1	1
2018	96	96	0	32	31	28	94	32	62	2	0	2



Degrees Conferred by Race/Ethnicity

Special_Education_MED [20FS0093MED]
AY2011-12 through 2015-16

Academic Year	Total	Under Represented Minorities (URM)								Asian		Native Hawaiian or Pacific		White		Two or More Races		International		Not Reported
		American Indian or Alaska Native		Black or African American		Hispanic / Latino		URM Total		Count	%	Count	%	Count	%	Count	%	Count	%	Count
		Count	%	Count	%	Count	%	Count	%											
2013 - 2014	26	0	0.0	3	11.5	7	26.9	10	38.5	1	3.8	0	0.0	15	57.7	0	0.0	0	0.0	0
2014 - 2015	19	0	0.0	0	0.0	1	5.3	1	5.3	0	0.0	0	0.0	17	89.5	1	5.3	0	0.0	0
2015 - 2016	31	0	0.0	2	6.5	3	9.7	5	16.1	3	9.7	0	0.0	20	64.5	0	0.0	0	0.0	3
2016 - 2017	49	0	0.0	5	10.2	8	16.3	13	26.5	1	2.0	0	0.0	34	69.4	0	0.0	1	2.0	0
2017 - 2018	58	0	0.0	4	6.9	6	10.3	10	17.2	5	8.6	0	0.0	41	70.7	2	3.4	0	0.0	0



Notes: 1) URM stands for Under-Represented Minority and includes American Indian or Alaska Native; Black or African-American; Hispanic / Latino race/ethnicity groups
2) Individual URM groups, Native Hawaiian Pacific Islander, Two or More Races, and Other race/ethnicity categories left off this chart due to relatively low numbers

Degrees Conferred

by Gender

Special_Education_MED [20FS0093MED]

AY2011-12 through 2015-16

Academic Year	Total	Male		Female		Not Reported
		Count	%	Count	%	
2013 - 2014	26	6	23.1	20	76.9	0
2014 - 2015	19	3	15.8	16	84.2	0
2015 - 2016	31	10	32.3	21	67.7	0
2016 - 2017	49	12	24.5	37	75.5	0
2017 - 2018	58	16	27.6	42	72.4	0

