

# Matriculation

## Diversity Pipeline

Measurement\_Evaluation\_Statistics\_Assessment\_MED [20FS5106MED]

Fall 2014 - Fall 2018

Fall Semester Year	Applied					Admitted					Non-URM Admitted to Applied Yield %	URM Admitted to Applied Yield %	New Enrollment					Non-URM Enrolled to Admitted Yield %	URM Enrolled to Admitted Yield %	Total Enrollment				
	Grand Total	Non-URM Total		URM Total		Grand Total	Non-URM Total		URM Total				Grand Total	Non-URM Total		URM Total				Grand Total	Non-URM Total		URM Total	
		Count	%	Count	%		Count	%	Count	%				Count	%	Count	%				Count	%	Count	%
	Count	%	Count	%	Count	%	Count	%	Count	%			Count	%	Count	%	Count			%	Count	%	Count	%
2014	9	9	100.0%	0	0.0%	8	8	100.0%	0	0.0%	88.9%	0.0%	3	3	100.0%	0	0.0%	37.5%	0.0%	31	28	90.3%	3	9.7%
2015	12	12	100.0%	0	0.0%	9	9	100.0%	0	0.0%	75.0%	0.0%	3	3	100.0%	0	0.0%	33.3%	0.0%	25	22	88.0%	3	12.0%
2016	7	6	85.7%	1	14.3%	4	3	75.0%	1	25.0%	50.0%	100.0%	3	2	66.7%	1	33.3%	66.7%	100.0%	23	21	91.3%	2	8.7%
2017	9	7	77.8%	2	22.2%	6	4	66.7%	2	33.3%	57.1%	100.0%	1	0	0.0%	1	100.0%	0.0%	50.0%	16	13	81.3%	3	18.8%
2018	4	3	75.0%	1	25.0%	4	3	75.0%	1	25.0%	100.0%	100.0%	0	0	0.0%	0	0.0%	0.0%	0.0%	16	15	93.8%	1	6.3%
<b>Average</b>	<b>8</b>	<b>7</b>	<b>90.2%</b>	<b>1</b>	<b>9.8%</b>	<b>6</b>	<b>5</b>	<b>87.1%</b>	<b>1</b>	<b>12.9%</b>	<b>73.0%</b>	<b>100.0%</b>	<b>2</b>	<b>2</b>	<b>80.0%</b>	<b>0</b>	<b>20.0%</b>	<b>29.6%</b>	<b>50.0%</b>	<b>22</b>	<b>20</b>	<b>89.2%</b>	<b>2.4</b>	<b>10.8%</b>

**Note:** URM stands for Under-Represented Minority and includes American Indian or Alaska Native; Black or African-American; Hispanic / Latino race/ethnicity groups

# Applications, Admission, & New Enrollment Yields by Race/Ethnicity & Gender

Measurement\_Evaluation\_Statistics\_Assessment\_MED [20FS5106MED]

Fall 2014 - Fall 2018

	Fall Semester Year	Total	Under Represented Minorities (URM)								Asian	Native Hawaiian or Pacific Islander	White	Two or More Races	International	Race/Eth Not Reported	Male	Female									
			American Indian or Alaska Native		Black or African American		Hispanic / Latino		URM Total																		
Applied	2014	9	0	0	0	0	0	0	0	2	0	0	5	0	2	0	3	6									
	2015	12	0	0	0	0	0	0	0	0	0	0	5	0	6	1	4	8									
	2016	7	0	0	1	1	0	1	0	0	0	0	1	0	5	0	2	5									
	2017	9	0	2	0	2	0	2	0	0	0	0	4	0	3	0	4	5									
	2018	4	0	0	1	1	1	1	1	0	1	0	1	0	0	1	1	3									
		Count	% Yield	Count	% Yield	Count	% Yield	Count	% Yield	Count	% Yield	Count	% Yield	Count	% Yield	Count	Count	% Yield	Count	% Yield							
Admitted	2014	8	88.9	0	0.0	0	0.0	0	0.0	0	0.0	2	100.0	0	0.0	2	100.0	0	3	100.0	5	83.3					
	2015	9	75.0	0	0.0	0	0.0	0	0.0	0	0.0	0	0.0	4	80.0	0	0.0	4	66.7	1	4	100.0	5	62.5			
	2016	4	57.1	0	0.0	0	0.0	1	100.0	1	100.0	0	0.0	0	0.0	1	100.0	0	0	0.0	2	40.0	0	1	50.0	3	60.0
	2017	6	66.7	0	0.0	2	100.0	0	0.0	2	100.0	0	0.0	0	0.0	2	50.0	0	0	0.0	2	66.7	0	4	100.0	2	40.0
	2018	4	100.0	0	0.0	0	0.0	1	100.0	1	100.0	1	100.0	0	0.0	1	100.0	0	0	0.0	1	100.0	0	1	100.0	3	100.0
		Count	% Yield	Count	% Yield	Count	% Yield	Count	% Yield	Count	% Yield	Count	% Yield	Count	% Yield	Count	% Yield	Count	Count	% Yield	Count	% Yield					
Enrolled	2014	3	37.5	0	0.0	0	0.0	0	0.0	0	0.0	1	50.0	0	0.0	1	50.0	0	0	0.0	0	0.0	3	60.0			
	2015	3	33.3	0	0.0	0	0.0	0	0.0	0	0.0	0	0.0	2	50.0	0	0.0	0	0	0.0	1	2	50.0	1	20.0		
	2016	3	75.0	0	0.0	0	0.0	1	100.0	1	100.0	0	0.0	0	0.0	2	200.0	0	0	0.0	0	0.0	0	1	100.0	2	66.7
	2017	1	16.7	0	0.0	1	50.0	0	0.0	1	50.0	0	0.0	0	0.0	0	0.0	0	0	0.0	0	0.0	0	0	0.0	1	50.0
	2018	0	0.0	0	0.0	0	0.0	0	0.0	0	0.0	0	0.0	0	0.0	0	0.0	0	0	0.0	0	0.0	0	0	0.0	0	0.0

**Notes:**

- 1) URM stands for Under-Represented Minority and includes American Indian or Alaska Native; Black or African-American; Hispanic / Latino race/ethnicity groups
- 2) Unreported Gender identification is not shown; Male and Female total may not match Total
- 3) In rare situations, the "% Yield" columns may be greater than 100. There are three potential reasons for this:
  - a) Students that received Graduate College approved transfers may not have an admission record for the program that they enrolled into.
  - b) Students with a secondary curriculum enrollment may not have an admission record for that secondary program.
  - c) Students who were newly enrolled in the summer term prior to the fall were added to the fall new enrollment totals.

# Applications, Admission, & New Enrollment Yields, cont. by Race/Ethnicity & Gender

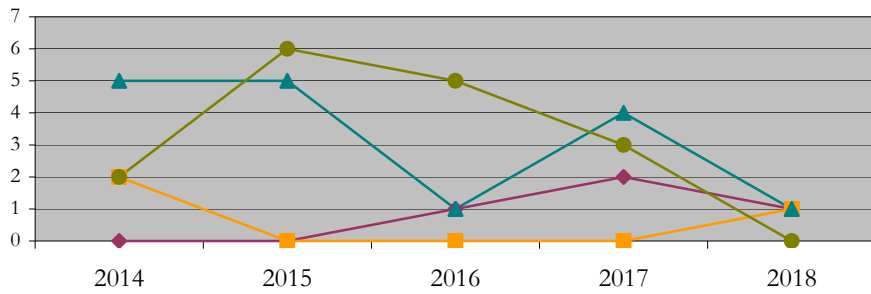
Measurement\_Evaluation\_Statistics\_Assessment\_MED [20FS5106MED]

Fall 2014 - Fall 2018

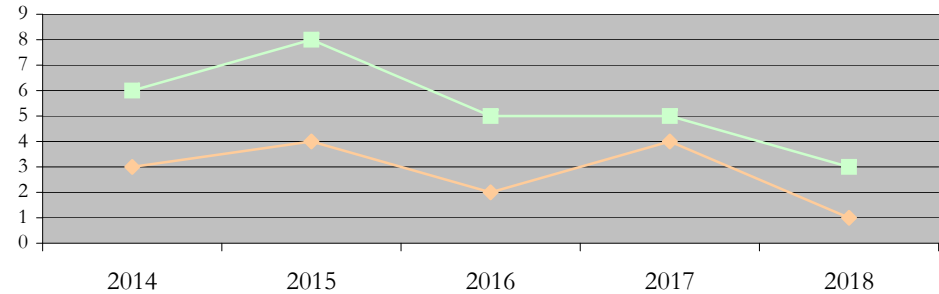
URM Total Asian White International

Male Female

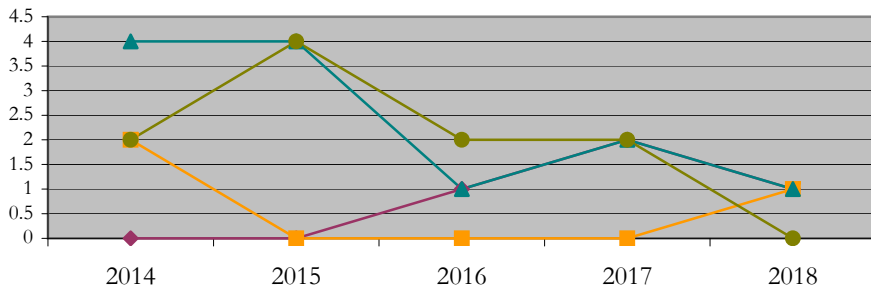
Applications by Race/Ethnicity



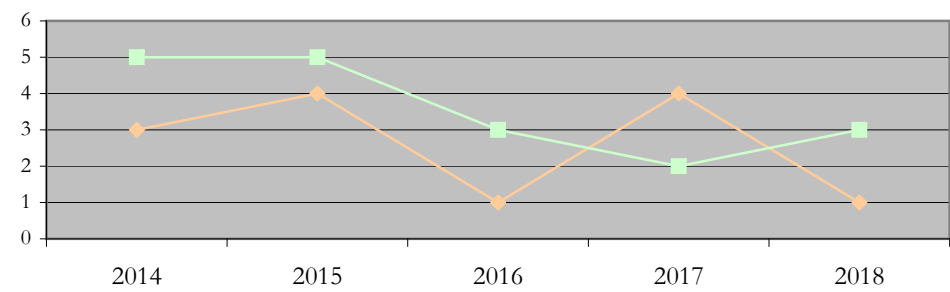
Applications by Gender



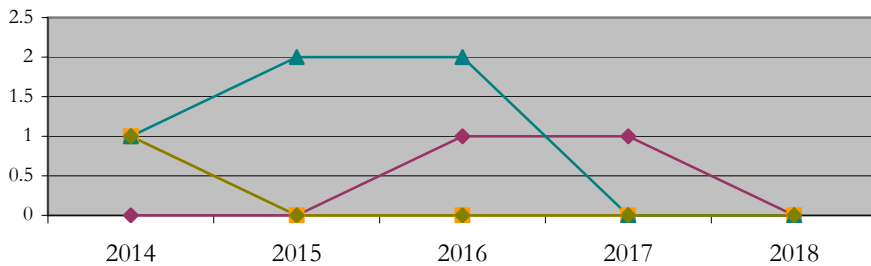
Admissions by Race/Ethnicity



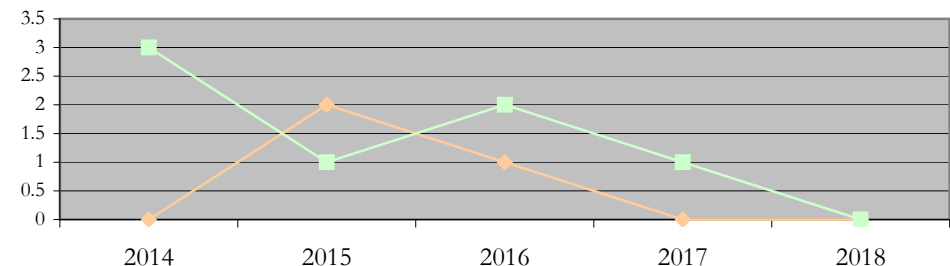
Admissions by Gender



New Enrollments by Race/Ethnicity



New Enrollments by Gender



**Notes:** 1) URM stands for Under-Represented Minority and includes American Indian or Alaska Native; Black or African-American; Hispanic / Latino race/ethnicity groups  
2) Individual URM groups, Native Hawaiian Pacific Islander, Two or More Races, and Other race/ethnicity categories left off these charts due to relatively low numbers

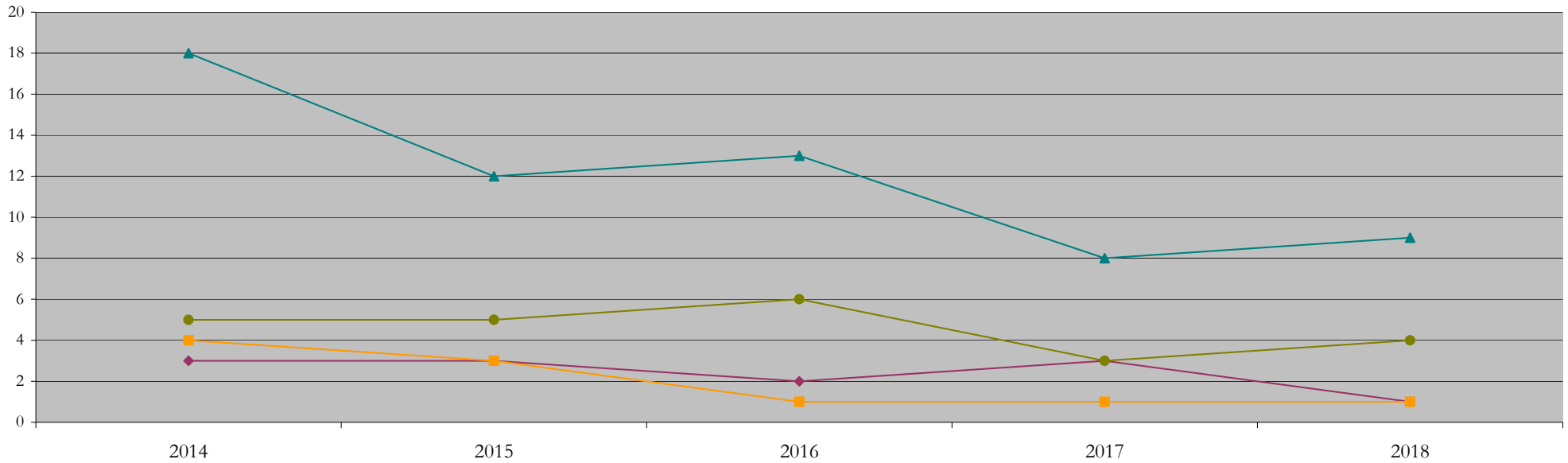
**Total Enrollment (includes secondary curriculum)**

**by Race/Ethnicity**

Measurement\_Evaluation\_Statistics\_Assessment\_MED [20FS5106MED]

Fall 2014 - Fall 2018

Fall Semester Year	Total	Under Represented Minorities (URM)										Asian	Native Hawaiian or Pacific Islander	White	Two or More Races	International	Race/Eth Not Reported			
		American Indian or Alaska Native		Black or African American		Hispanic / Latino		URM Total												
		Count	%	Count	%	Count	%	Count	%											
2014	31	0	0.0	2	6.5	1	3.2	3	9.7	4	12.9	1	3.2	18	58.1	0	0.0	5	16.1	0
2015	25	0	0.0	2	8.0	1	4.0	3	12.0	3	12.0	1	4.0	12	48.0	0	0.0	5	20.0	1
2016	23	0	0.0	1	4.3	1	4.3	2	8.7	1	4.3	1	4.3	13	56.5	0	0.0	6	26.1	0
2017	16	0	0.0	2	12.5	1	6.3	3	18.8	1	6.3	1	6.3	8	50.0	0	0.0	3	18.8	0
2018	16	0	0.0	1	6.3	0	0.0	1	6.3	1	6.3	1	6.3	9	56.3	0	0.0	4	25.0	0



**Notes:** 1) URM stands for Under-Represented Minority and includes American Indian or Alaska Native; Black or African-American; Hispanic / Latino race/ethnicity groups  
 2) Individual URM groups, Native Hawaiian Pacific Islander, Two or More Races, and Other race/ethnicity categories left off this chart due to relatively low numbers

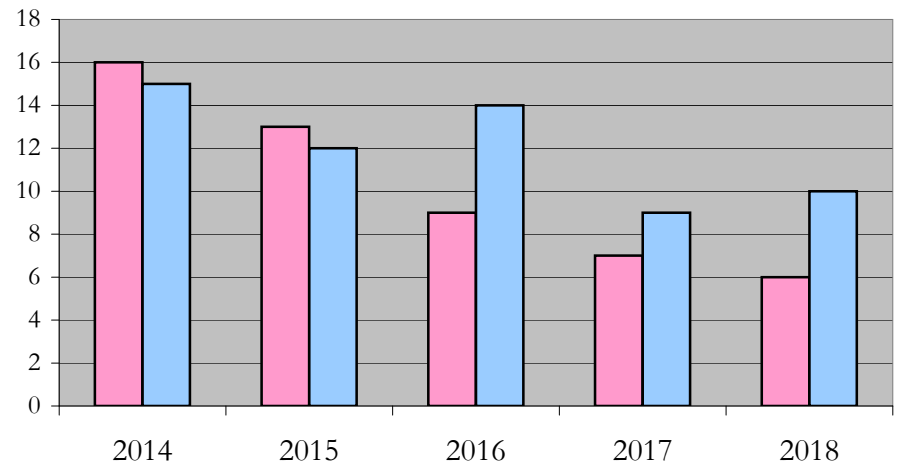
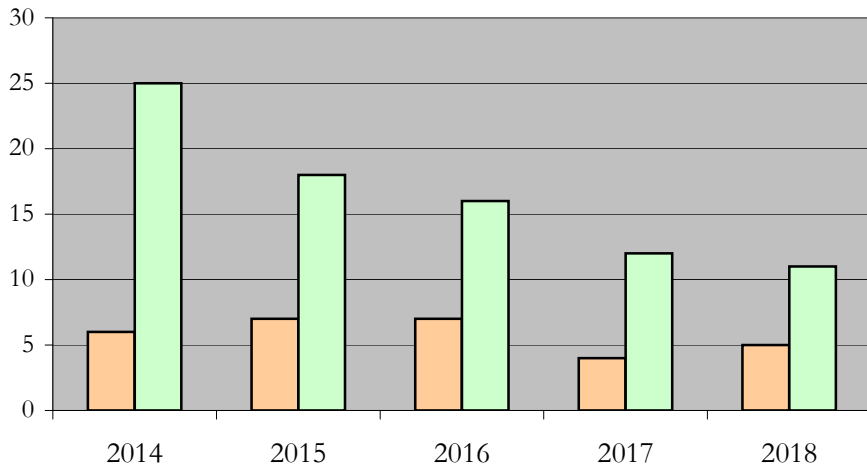
**Total Enrollment (includes secondary curriculum)**

**by Student Type, Gender, and Enrollment Time**

Measurement\_Evaluation\_Statistics\_Assessment\_MED [20FS5106MED]

Fall 2014 - Fall 2018

Fall Semester Year	Total	New		Continuing		Male		Female		Gender Not Reported	Part-time		Full-time	
		Count	%	Count	%	Count	%	Count	%	Count	Count	%	Count	%
2014	31	3	9.7	28	90.3	6	19.4	25	80.6	0	16	51.6	15	48.4
2015	25	3	12.0	22	88.0	7	28.0	18	72.0	0	13	52.0	12	48.0
2016	23	3	13.0	20	87.0	7	30.4	16	69.6	0	9	39.1	14	60.9
2017	16	1	6.3	15	93.8	4	25.0	12	75.0	0	7	43.8	9	56.3
2018	16	0	0.0	16	100.0	5	31.3	11	68.8	0	6	37.5	10	62.5



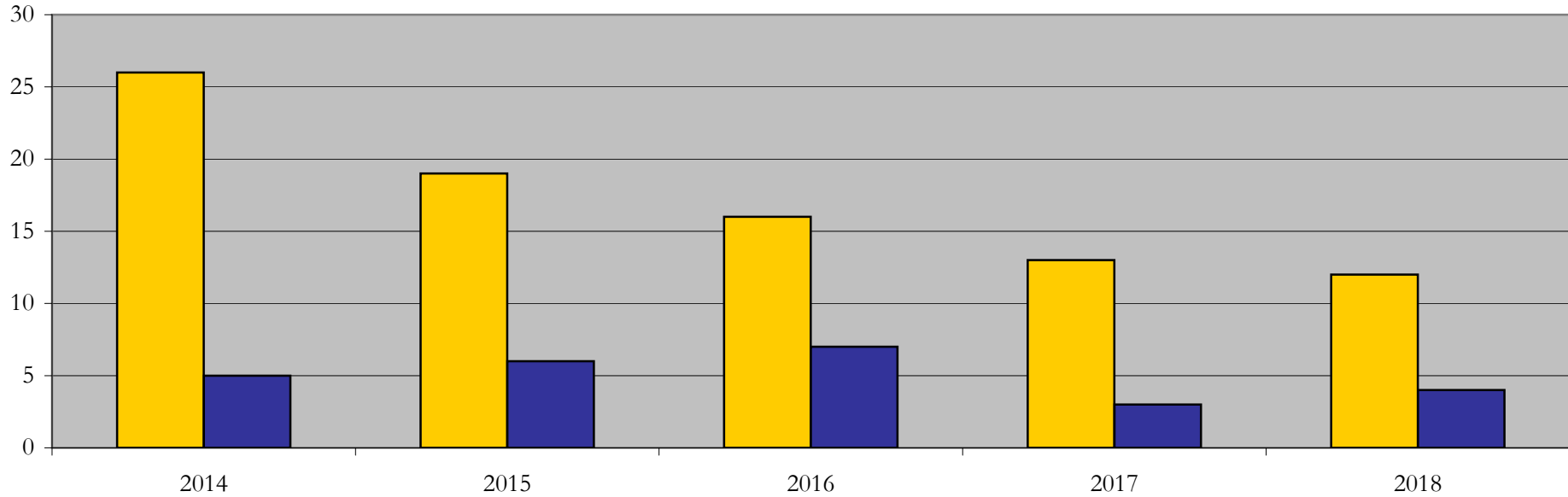
## Enrollment & Degrees Conferred

### by Primary/Secondary, Average Age, State Residency

Measurement\_Evaluation\_Statistics\_Assessment\_MED [20FS5106MED]

Fall 2014 - Fall 2018

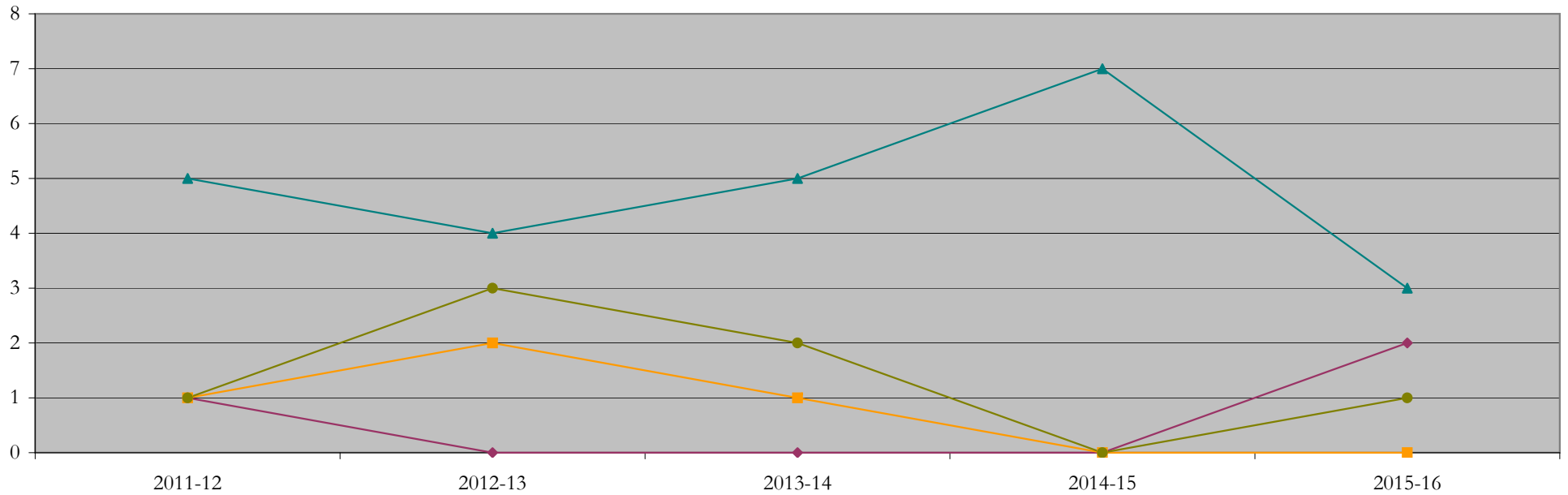
Fall Semester Year	Enrollment			Average Age			State Residency of Total Enrollment					
	Total	Primary	Secondary	Fall New Enrollment	Fall Continuing Enrollment	Academic Year Graduating Class	Residents			Non-Residents		
							Total Enrollment	New Enrollment	Continuing Enrollment	Total Enrollment	New Enrollment	Continuing Enrollment
2014	31	13	18	25	34	34	26	2	24	5	1	4
2015	25	12	13	32	33	30	19	2	17	6	1	5
2016	23	9	14	30	34	35	16	3	13	7	0	7
2017	16	4	12	31	33	30	13	1	12	3	0	3
2018	16	4	12	0	32	27	12	0	12	4	0	4



## Degrees Conferred by Race/Ethnicity

Measurement\_Evaluation\_Statistics\_Assessment\_MED [20FS5106MED]  
AY2011-12 through 2015-16

Academic Year	Total	Under Represented Minorities (URM)								Asian		Native Hawaiian or Pacific		White		Two or More Races		International		Not Reported
		American Indian or Alaska Native		Black or African American		Hispanic / Latino		URM Total		Count	%	Count	%	Count	%	Count	%	Count	%	
		Count	%	Count	%	Count	%	Count	%											
2013 - 2014	8	0	0.0	0	0.0	1	12.5	1	12.5	1	12.5	0	0.0	5	62.5	0	0.0	1	12.5	0
2014 - 2015	10	0	0.0	0	0.0	0	0.0	0	0.0	2	20.0	1	10.0	4	40.0	0	0.0	3	30.0	0
2015 - 2016	8	0	0.0	0	0.0	0	0.0	0	0.0	1	12.5	0	0.0	5	62.5	0	0.0	2	25.0	0
2016 - 2017	7	0	0.0	0	0.0	0	0.0	0	0.0	0	0.0	0	0.0	7	100.0	0	0.0	0	0.0	0
2017 - 2018	6	0	0.0	1	16.7	1	16.7	2	33.3	0	0.0	0	0.0	3	50.0	0	0.0	1	16.7	0



**Notes:** 1) URM stands for Under-Represented Minority and includes American Indian or Alaska Native; Black or African-American; Hispanic / Latino race/ethnicity groups  
2) Individual URM groups, Native Hawaiian Pacific Islander, Two or More Races, and Other race/ethnicity categories left off this chart due to relatively low numbers

## Degrees Conferred

### by Gender

Measurement\_Evaluation\_Statistics\_Assessment\_MED [20FS5106MED]

AY2011-12 through 2015-16

Academic Year	Total	Male		Female		Not Reported
		Count	%	Count	%	
2013 - 2014	8	1	12.5	7	87.5	0
2014 - 2015	10	2	20.0	8	80.0	0
2015 - 2016	8	0	0.0	8	100.0	0
2016 - 2017	7	4	57.1	3	42.9	0
2017 - 2018	6	2	33.3	4	66.7	0

