

Matriculation

Diversity Pipeline

Urban_Education_Leadership_EDD [20FS4015EDD]

Fall 2014 - Fall 2018

Fall Semester Year	Applied					Admitted					Non-URM Admitted to Applied Yield %	URM Admitted to Applied Yield %	New Enrollment					Non-URM Enrolled to Admitted Yield %	URM Enrolled to Admitted Yield %	Total Enrollment				
	Grand Total	Non-URM Total		URM Total		Grand Total	Non-URM Total		URM Total				Grand Total	Non-URM Total		URM Total				Grand Total	Non-URM Total		URM Total	
		Count	%	Count	%		Count	%	Count	%				Count	%	Count	%				Count	%	Count	%
	Count	%	Count	%	Count	%	Count	%	Count	%			Count	%	Count	%	Count			%	Count	%	Count	%
2014	0	0	0.0%	0	0.0%	0	0	0.0%	0	0.0%	0.0%	0.0%	0	0	0.0%	0	0.0%	0.0%	0.0%	84	45	53.6%	39	46.4%
2015	2	1	50.0%	1	50.0%	2	1	50.0%	1	50.0%	100.0%	100.0%	2	1	50.0%	1	50.0%	100.0%	100.0%	86	44	51.2%	42	48.8%
2016	0	0	0.0%	0	0.0%	0	0	0.0%	0	0.0%	0.0%	0.0%	0	0	0.0%	0	0.0%	0.0%	0.0%	78	44	56.4%	34	43.6%
2017	1	0	0.0%	1	100.0%	1	0	0.0%	1	100.0%	0.0%	100.0%	1	0	0.0%	1	100.0%	0.0%	100.0%	64	36	56.3%	28	43.8%
2018	0	0	0.0%	0	0.0%	0	0	0.0%	0	0.0%	0.0%	0.0%	0	0	0.0%	0	0.0%	0.0%	0.0%	64	32	50.0%	32	50.0%
Average	1	0	33.3%	0	66.7%	1	0	33.3%	0	66.7%	100.0%	100.0%	1	0	33.3%	0	66.7%	100.0%	100.0%	75	40	53.5%	35	46.5%

Note: URM stands for Under-Represented Minority and includes American Indian or Alaska Native; Black or African-American; Hispanic / Latino race/ethnicity groups

Applications, Admission, & New Enrollment Yields

by Race/Ethnicity & Gender

Urban_Education_Leadership_EDD [20FS4015EDD]

Fall 2014 - Fall 2018

	Fall Semester Year	Total	Under Represented Minorities (URM)									Race/Eth Not Reported	Male	Female											
			American Indian or Alaska Native	Black or African American	Hispanic / Latino	URM Total	Asian	Native Hawaiian or Pacific Islander	White	Two or More Races	International														
Applied	2014	0	0	0	0	0	0	0	0	0	0	0	0	0	0	0	0	0	0	0	0				
	2015	2	0	1	0	1	0	0	0	1	0	0	0	0	0	0	0	0	0	0	2	0			
	2016	0	0	0	0	0	0	0	0	0	0	0	0	0	0	0	0	0	0	0	0	0			
	2017	1	0	0	1	1	0	0	0	0	0	0	0	0	0	0	0	1	0	0	0	0			
	2018	0	0	0	0	0	0	0	0	0	0	0	0	0	0	0	0	0	0	0	0	0			
		Count	% Yield	Count	% Yield	Count	% Yield	Count	% Yield	Count	% Yield	Count	% Yield	Count	% Yield	Count	% Yield	Count	% Yield	Count	% Yield	Count	% Yield		
Admitted	2014	0	0.0	0	0.0	0	0.0	0	0.0	0	0.0	0	0.0	0	0.0	0	0.0	0	0.0	0	0.0	0	0.0		
	2015	2	100.0	0	0.0	1	100.0	0	0.0	1	100.0	0	0.0	0	0.0	1	100.0	0	0.0	0	0.0	2	100.0		
	2016	0	0.0	0	0.0	0	0.0	0	0.0	0	0.0	0	0.0	0	0.0	0	0.0	0	0.0	0	0.0	0	0.0		
	2017	1	100.0	0	0.0	0	0.0	1	100.0	1	100.0	0	0.0	0	0.0	0	0.0	0	0.0	0	0.0	1	100.0	0	0.0
	2018	0	0.0	0	0.0	0	0.0	0	0.0	0	0.0	0	0.0	0	0.0	0	0.0	0	0.0	0	0.0	0	0.0		
		Count	% Yield	Count	% Yield	Count	% Yield	Count	% Yield	Count	% Yield	Count	% Yield	Count	% Yield	Count	% Yield	Count	% Yield	Count	% Yield	Count	% Yield		
Enrolled	2014	0	0.0	0	0.0	0	0.0	0	0.0	0	0.0	0	0.0	0	0.0	0	0.0	0	0.0	0	0.0	0	0.0		
	2015	2	100.0	0	0.0	1	100.0	0	0.0	1	100.0	0	0.0	0	0.0	1	100.0	0	0.0	0	0.0	2	100.0		
	2016	0	0.0	0	0.0	0	0.0	0	0.0	0	0.0	0	0.0	0	0.0	0	0.0	0	0.0	0	0.0	0	0.0		
	2017	1	100.0	0	0.0	0	0.0	1	100.0	1	100.0	0	0.0	0	0.0	0	0.0	0	0.0	0	0.0	1	100.0	0	0.0
	2018	0	0.0	0	0.0	0	0.0	0	0.0	0	0.0	0	0.0	0	0.0	0	0.0	0	0.0	0	0.0	0	0.0		

Notes:

- 1) URM stands for Under-Represented Minority and includes American Indian or Alaska Native; Black or African-American; Hispanic / Latino race/ethnicity groups
- 2) Unreported Gender identification is not shown; Male and Female total may not match Total
- 3) In rare situations, the "% Yield" columns may be greater than 100. There are three potential reasons for this:
 - a) Students that received Graduate College approved transfers may not have an admission record for the program that they enrolled into.
 - b) Students with a secondary curriculum enrollment may not have an admission record for that secondary program.
 - c) Students who were newly enrolled in the summer term prior to the fall were added to the fall new enrollment totals.

Applications, Admission, & New Enrollment Yields, cont. by Race/Ethnicity & Gender

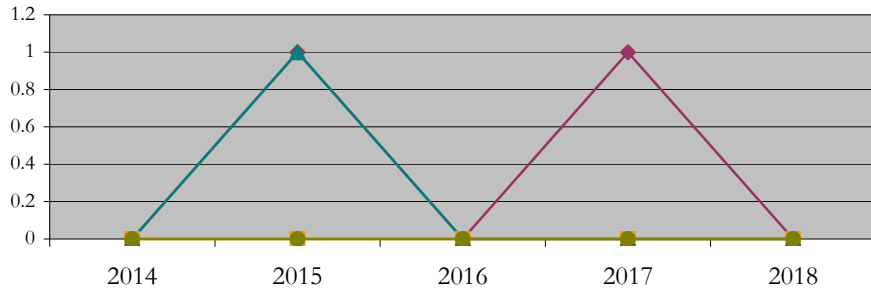
Urban_Education_Leadership_EDD [20FS4015EDD]

Fall 2014 - Fall 2018

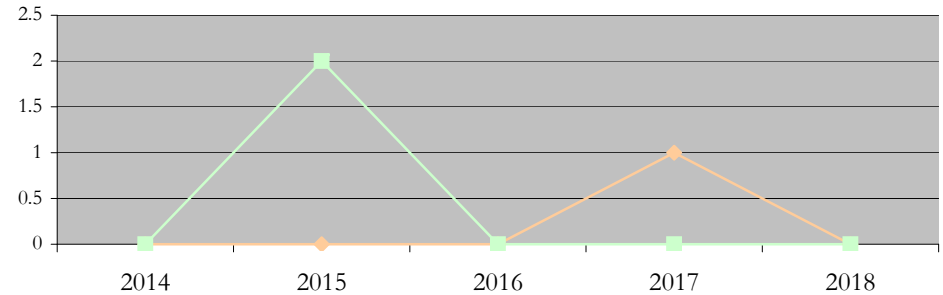
URM Total Asian White International

Male Female

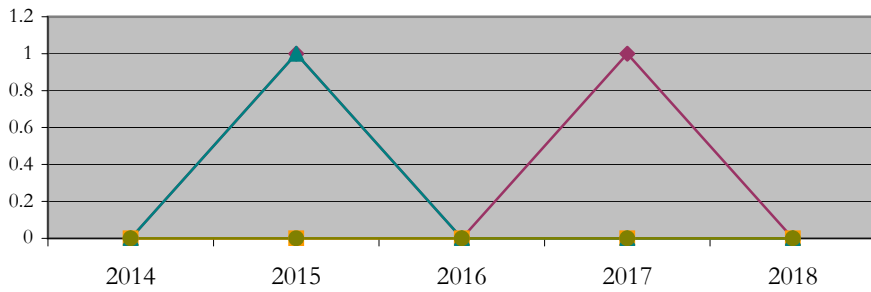
Applications by Race/Ethnicity



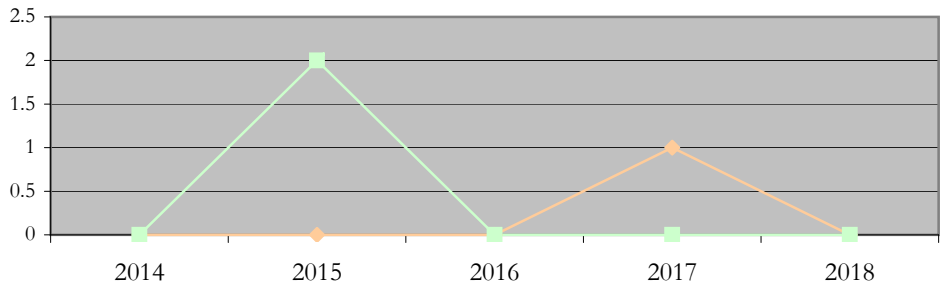
Applications by Gender



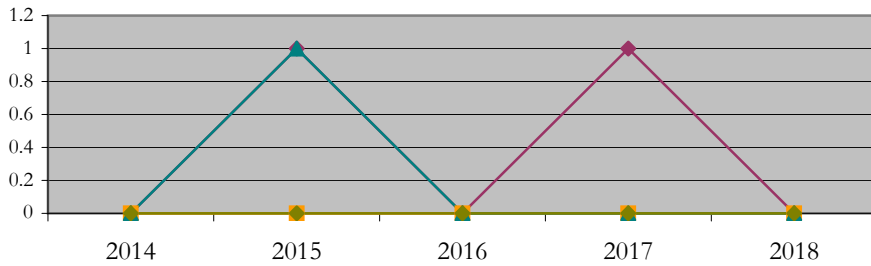
Admissions by Race/Ethnicity



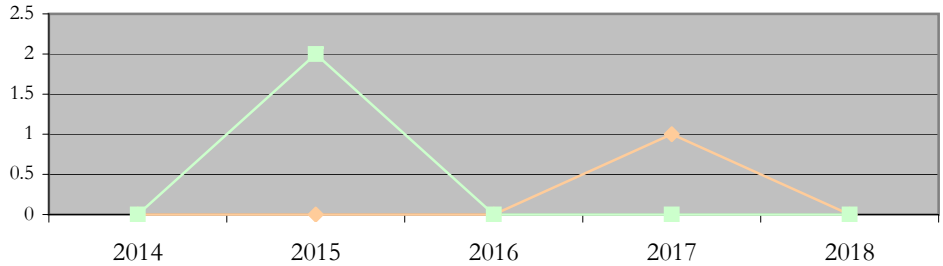
Admissions by Gender



New Enrollments by Race/Ethnicity



New Enrollments by Gender



Notes: 1) URM stands for Under-Represented Minority and includes American Indian or Alaska Native; Black or African-American; Hispanic / Latino race/ethnicity groups
2) Individual URM groups, Native Hawaiian Pacific Islander, Two or More Races, and Other race/ethnicity categories left off these charts due to relatively low numbers

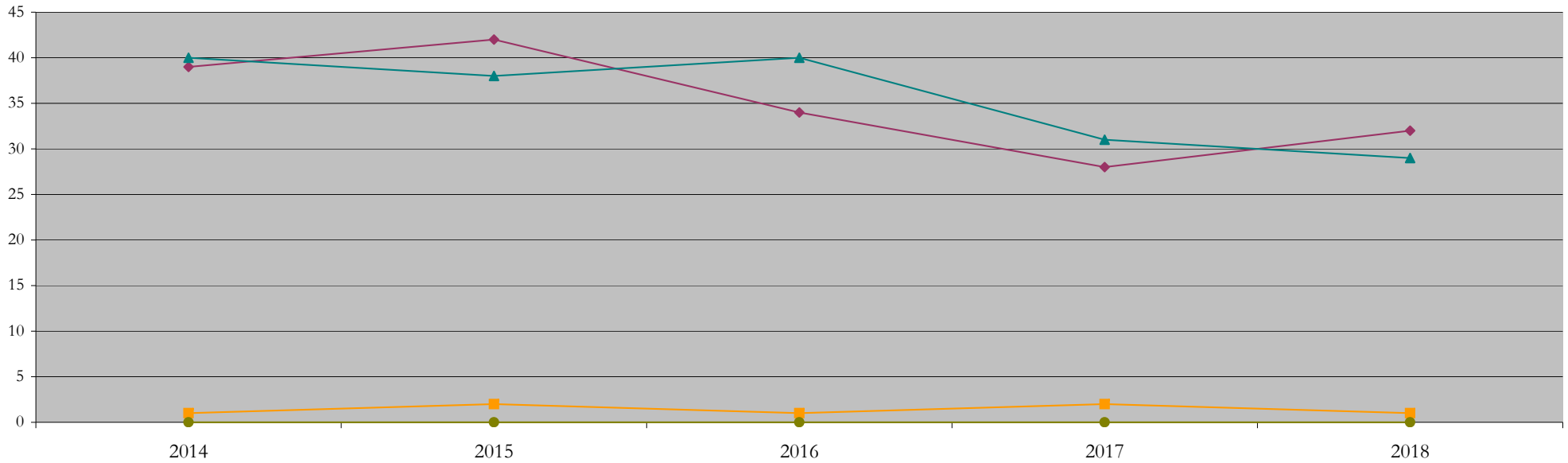
Total Enrollment (includes secondary curriculum)

by Race/Ethnicity

Urban_Education_Leadership_EDD [20FS4015EDD]

Fall 2014 - Fall 2018

Fall Semester Year	Total	Under Represented Minorities (URM)										Asian	Native Hawaiian or Pacific Islander	White	Two or More Races	International	Race/Eth Not Reported			
		American Indian or Alaska Native		Black or African American		Hispanic / Latino		URM Total												
		Count	%	Count	%	Count	%	Count	%											
2014	84	0	0.0	27	32.1	12	14.3	39	46.4	1	1.2	0	0.0	40	47.6	2	2.4	0	0.0	2
2015	86	0	0.0	26	30.2	16	18.6	42	48.8	2	2.3	0	0.0	38	44.2	3	3.5	0	0.0	1
2016	78	0	0.0	22	28.2	12	15.4	34	43.6	1	1.3	0	0.0	40	51.3	2	2.6	0	0.0	1
2017	64	0	0.0	16	25.0	12	18.8	28	43.8	2	3.1	0	0.0	31	48.4	2	3.1	0	0.0	1
2018	64	0	0.0	14	21.9	18	28.1	32	50.0	1	1.6	0	0.0	29	45.3	2	3.1	0	0.0	0



Notes: 1) URM stands for Under-Represented Minority and includes American Indian or Alaska Native; Black or African-American; Hispanic / Latino race/ethnicity groups
 2) Individual URM groups, Native Hawaiian Pacific Islander, Two or More Races, and Other race/ethnicity categories left off this chart due to relatively low numbers

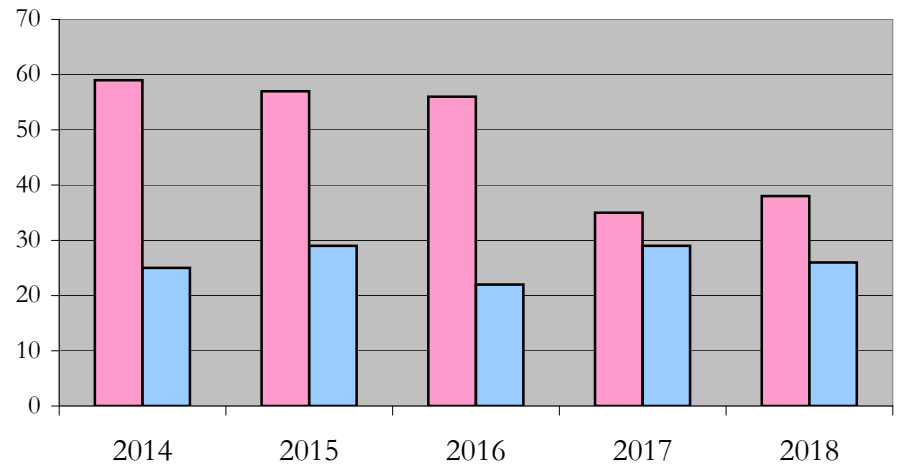
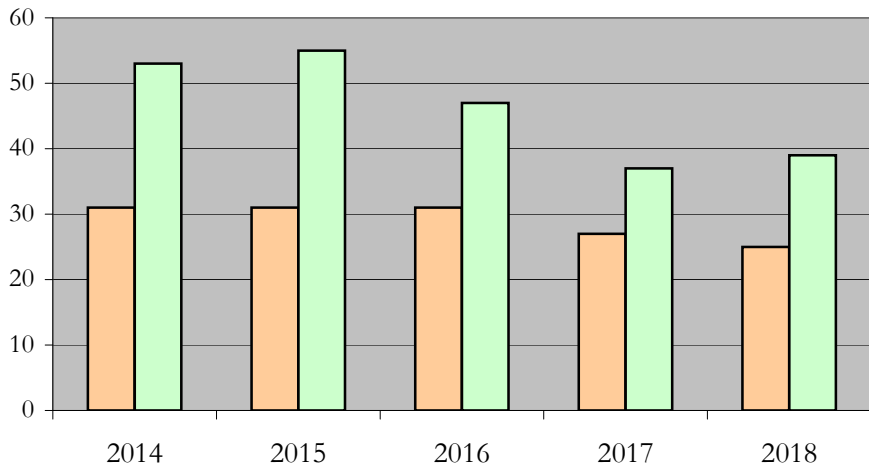
Total Enrollment (includes secondary curriculum)

by Student Type, Gender, and Enrollment Time

Urban_Education_Leadership_EDD [20FS4015EDD]

Fall 2014 - Fall 2018

Fall Semester Year	Total	New		Continuing		Male		Female		Gender Not Reported	Part-time		Full-time	
		Count	%	Count	%	Count	%	Count	%		Count	%	Count	%
2014	84	0	0.0	84	100.0	31	36.9	53	63.1	0	59	70.2	25	29.8
2015	86	2	2.3	84	97.7	31	36.0	55	64.0	0	57	66.3	29	33.7
2016	78	0	0.0	78	100.0	31	39.7	47	60.3	0	56	71.8	22	28.2
2017	64	1	1.6	63	98.4	27	42.2	37	57.8	0	35	54.7	29	45.3
2018	64	0	0.0	64	100.0	25	39.1	39	60.9	0	38	59.4	26	40.6



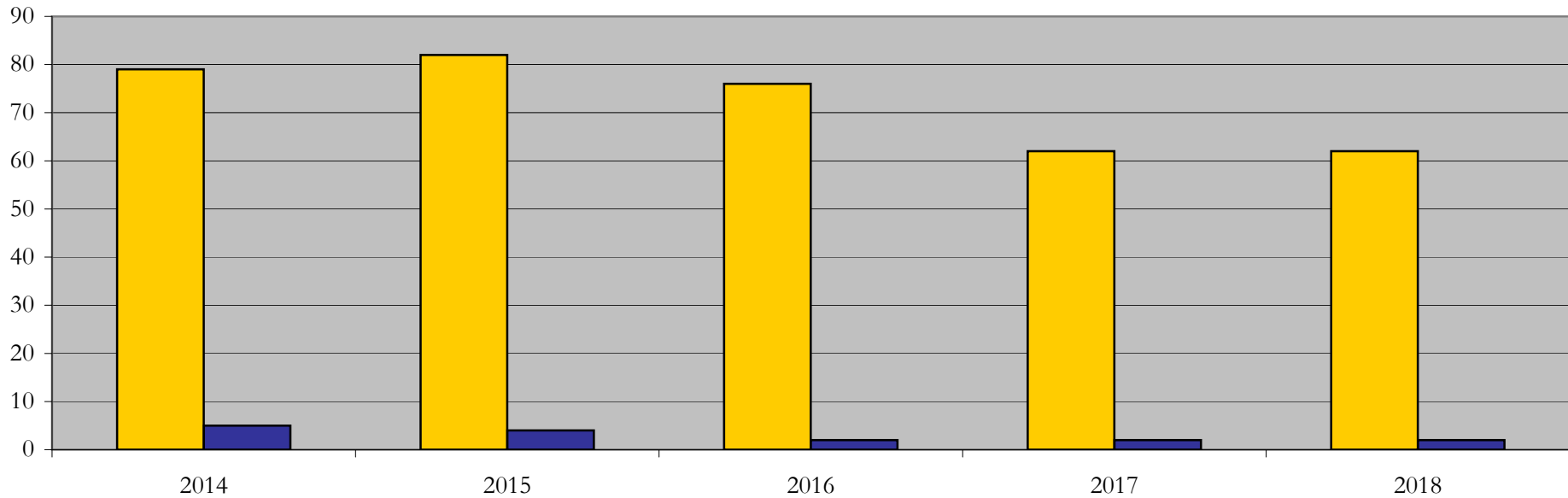
Enrollment & Degrees Conferred

by Primary/Secondary, Average Age, State Residency

Urban_Education_Leadership_EDD [20FS4015EDD]

Fall 2014 - Fall 2018

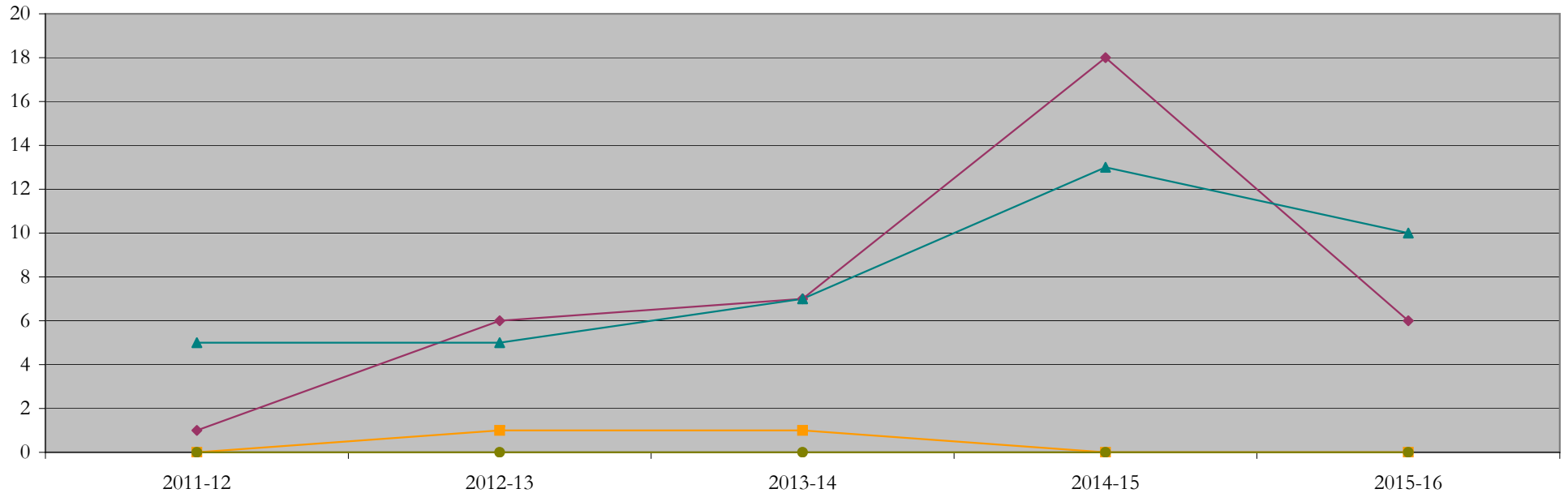
Fall Semester Year	Enrollment			Average Age			State Residency of Total Enrollment					
	Total	Primary	Secondary	Fall New Enrollment	Fall Continuing Enrollment	Academic Year Graduating Class	Residents			Non-Residents		
							Total Enrollment	New Enrollment	Continuing Enrollment	Total Enrollment	New Enrollment	Continuing Enrollment
2014	84	84	0	0	38	46	79	0	79	5	0	5
2015	86	86	0	40	38	42	82	2	80	4	0	4
2016	78	78	0	0	39	40	76	0	76	2	0	2
2017	64	64	0	31	37	41	62	1	61	2	0	2
2018	64	64	0	0	38	35	62	0	62	2	0	2



Degrees Conferred by Race/Ethnicity

Urban_Education_Leadership_EDD [20FS4015EDD]
AY2011-12 through 2015-16

Academic Year	Total	Under Represented Minorities (URM)								Asian		Native Hawaiian or Pacific		White		Two or More Races		International		Not Reported
		American Indian or Alaska Native		Black or African American		Hispanic / Latino		URM Total		Count	%	Count	%	Count	%	Count	%	Count	%	Count
		Count	%	Count	%	Count	%	Count	%											
2013 - 2014	7	0	0.0	1	14.3	0	0.0	1	14.3	0	0.0	0	0.0	5	71.4	0	0.0	0	0.0	1
2014 - 2015	12	0	0.0	3	25.0	3	25.0	6	50.0	1	8.3	0	0.0	5	41.7	0	0.0	0	0.0	0
2015 - 2016	15	0	0.0	2	13.3	5	33.3	7	46.7	1	6.7	0	0.0	7	46.7	0	0.0	0	0.0	0
2016 - 2017	34	0	0.0	11	32.4	7	20.6	18	52.9	0	0.0	0	0.0	13	38.2	3	8.8	0	0.0	0
2017 - 2018	17	0	0.0	5	29.4	1	5.9	6	35.3	0	0.0	0	0.0	10	58.8	0	0.0	0	0.0	1



Notes: 1) URM stands for Under-Represented Minority and includes American Indian or Alaska Native; Black or African-American; Hispanic / Latino race/ethnicity groups
2) Individual URM groups, Native Hawaiian Pacific Islander, Two or More Races, and Other race/ethnicity categories left off this chart due to relatively low numbers

Degrees Conferred

by Gender

Urban_Education_Leadership_EDD [20FS4015EDD]

AY2011-12 through 2015-16

Academic Year	Total	Male		Female		Not Reported
		Count	%	Count	%	
2013 - 2014	7	4	57.1	3	42.9	0
2014 - 2015	12	2	16.7	10	83.3	0
2015 - 2016	15	5	33.3	10	66.7	0
2016 - 2017	34	15	44.1	19	55.9	0
2017 - 2018	17	4	23.5	13	76.5	0

