

Matriculation

Diversity Pipeline

Curriculum_Studies_PHD [20FS5129PHD]

Fall 2012 through Fall 2016

Fall Semester Year	Applied					Admitted					Non-URM Admitted to Applied Yield %	URM Admitted to Applied Yield %	New Enrollment					Non-URM Enrolled to Admitted Yield %	URM Enrolled to Admitted Yield %	Total Enrollment				
	Grand Total	Non-URM Total		URM Total		Grand Total	Non-URM Total		URM Total				Grand Total	Non-URM Total		URM Total				Grand Total	Non-URM Total		URM Total	
		Count	%	Count	%		Count	%	Count	%				Count	%	Count	%				Count	%	Count	%
	Count	%	Count	%	Count	%	Count	%	Count	%			Count	%	Count	%	Count			%	Count	%	Count	%
2012	29	23	79.3%	6	20.7%	13	9	69.2%	4	30.8%	39.1%	66.7%	9	6	66.7%	3	33.3%	66.7%	75.0%	80	51	63.8%	29	36.3%
2013	26	21	80.8%	5	19.2%	10	7	70.0%	3	30.0%	33.3%	60.0%	10	7	70.0%	3	30.0%	100.0%	100.0%	68	38	55.9%	30	44.1%
2014	20	15	75.0%	5	25.0%	13	9	69.2%	4	30.8%	60.0%	80.0%	10	6	60.0%	4	40.0%	66.7%	100.0%	69	37	53.6%	32	46.4%
2015	19	11	57.9%	8	42.1%	7	2	28.6%	5	71.4%	18.2%	62.5%	4	1	25.0%	3	75.0%	50.0%	60.0%	55	31	56.4%	24	43.6%
2016	12	11	91.7%	1	8.3%	1	1	100.0%	0	0.0%	9.1%	0.0%	0	0	0.0%	0	0.0%	0.0%	0.0%	51	28	54.9%	23	45.1%
Average	21	16	76.4%	5	23.6%	9	6	63.6%	3	36.4%	34.6%	64.0%	7	4	60.6%	3	39.4%	71.4%	81.3%	65	37	57.3%	27.6	42.7%

Note: URM stands for Under-Represented Minority and includes American Indian or Alaska Native; Black or African-American; Hispanic / Latino race/ethnicity groups

Applications, Admission, & New Enrollment Yields

by Race/Ethnicity & Gender

Curriculum_Studies_PHD [20FS5129PHD]

Fall 2012 through Fall 2016

	Fall Semester Year	Total	Under Represented Minorities (URM)										Race/Eth Not Reported	Male	Female												
			American Indian or Alaska Native		Black or African American		Hispanic / Latino		URM Total		Asian					Native Hawaiian or Pacific Islander		White		Two or More Races		International					
			Count	% Yield	Count	% Yield	Count	% Yield	Count	% Yield	Count	% Yield	Count	% Yield	Count	% Yield	Count	% Yield	Count	% Yield	Count	% Yield	Count	% Yield	Count	% Yield	
Applied	2012	29	0		5		1		6		0		0		15		0		8		0		10		18		
	2013	26	0		3		2		5		0		0		12		0		9		0		9		17		
	2014	20	0		2		3		5		2		0		9		1		2		1		7		13		
	2015	19	0		4		4		8		0		0		7		0		3		1		5		14		
	2016	12	0		1		0		1		0		0		4		0		7		0		6		6		
Admitted	2012	13	44.8	0	0.0	3	60.0	1	100.0	4	66.7	0	0.0	0	0.0	9	60.0	0	0.0	0	0.0	0	0.0	6	60.0	7	38.9
	2013	10	38.5	0	0.0	1	33.3	2	100.0	3	60.0	0	0.0	0	0.0	5	41.7	0	0.0	2	22.2	0	0.0	4	44.4	6	35.3
	2014	13	65.0	0	0.0	1	50.0	3	100.0	4	80.0	2	100.0	0	0.0	6	66.7	0	0.0	1	50.0	0	0.0	5	71.4	8	61.5
	2015	7	36.8	0	0.0	1	25.0	4	100.0	5	62.5	0	0.0	0	0.0	2	28.6	0	0.0	0	0.0	0	0.0	2	40.0	5	35.7
	2016	1	8.3	0	0.0	0	0.0	0	0.0	0	0.0	0	0.0	0	0.0	1	25.0	0	0.0	0	0.0	0	0.0	1	16.7	0	0.0
Enrolled	2012	9	69.2	0	0.0	2	66.7	1	100.0	3	75.0	0	0.0	0	0.0	6	66.7	0	0.0	0	0.0	0	0.0	6	100.0	3	42.9
	2013	10	100.0	0	0.0	1	100.0	2	100.0	3	100.0	0	0.0	0	0.0	6	120.0	0	0.0	1	50.0	0	0.0	3	75.0	7	116.7
	2014	10	76.9	0	0.0	1	100.0	3	100.0	4	100.0	1	50.0	0	0.0	4	66.7	0	0.0	1	100.0	0	0.0	3	60.0	7	87.5
	2015	4	57.1	0	0.0	0	0.0	3	75.0	3	60.0	0	0.0	0	0.0	1	50.0	0	0.0	0	0.0	0	0.0	2	100.0	2	40.0
	2016	0	0.0	0	0.0	0	0.0	0	0.0	0	0.0	0	0.0	0	0.0	0	0.0	0	0.0	0	0.0	0	0.0	0	0.0	0	0.0

Notes:

- 1) URM stands for Under-Represented Minority and includes American Indian or Alaska Native; Black or African-American; Hispanic / Latino race/ethnicity groups
- 2) Unreported Gender identification is not shown; Male and Female total may not match Total
- 3) In rare situations, the "% Yield" columns may be greater than 100. There are three potential reasons for this:
 - a) Students that received Graduate College approved transfers may not have an admission record for the program that they enrolled into.
 - b) Students with a secondary curriculum enrollment may not have an admission record for that secondary program.
 - c) Students who were newly enrolled in the summer term prior to the fall were added to the fall new enrollment totals.

Applications, Admission, & New Enrollment Yields, cont. by Race/Ethnicity & Gender

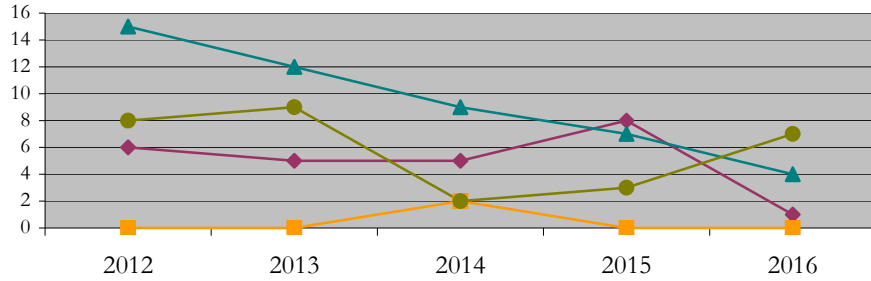
Curriculum_Studies_PHD [20FS5129PHD]

Fall 2012 through Fall 2016

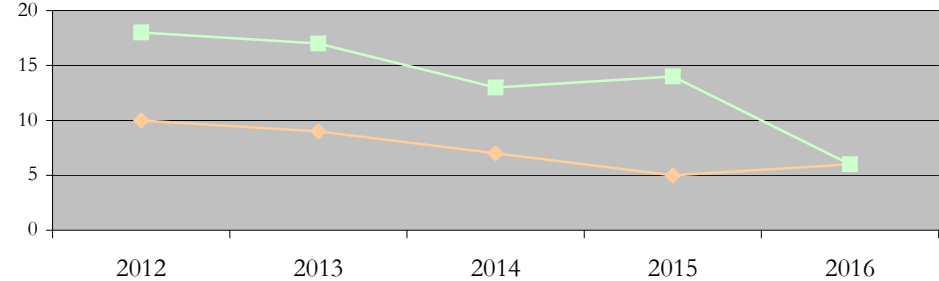
◆ URM Total ■ Asian ▲ White ● International

◆ Male ■ Female

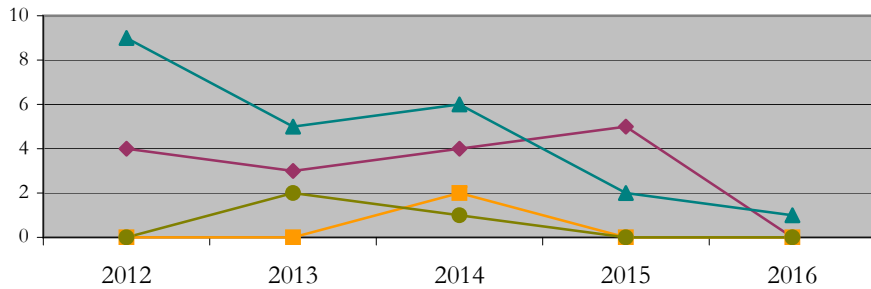
Applications by Race/Ethnicity



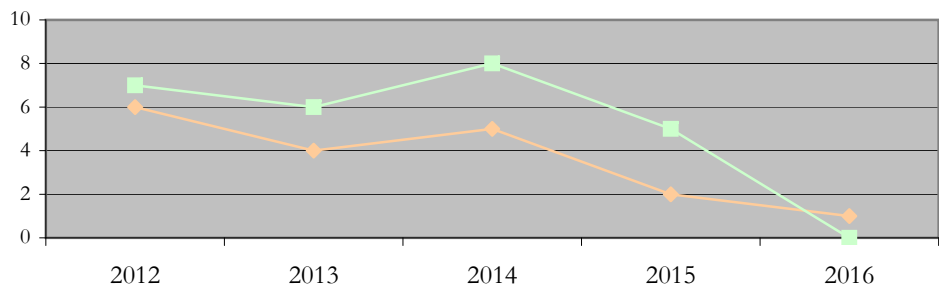
Applications by Gender



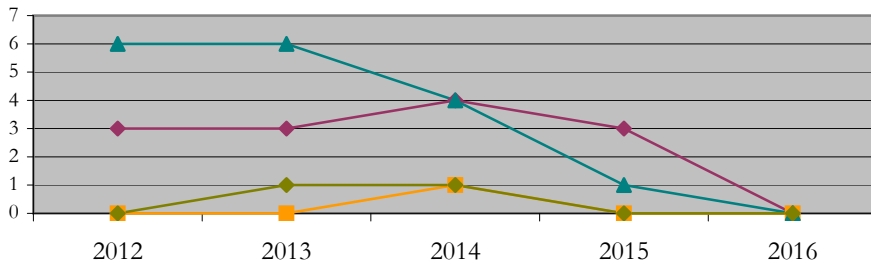
Admissions by Race/Ethnicity



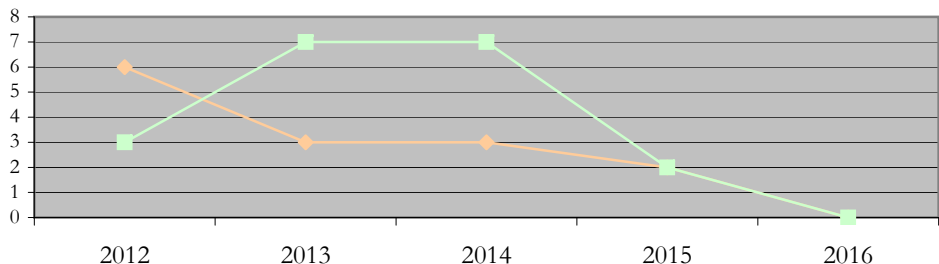
Admissions by Gender



New Enrollments by Race/Ethnicity



New Enrollments by Gender



Notes: 1) URM stands for Under-Represented Minority and includes American Indian or Alaska Native; Black or African-American; Hispanic / Latino race/ethnicity groups
2) Individual URM groups, Native Hawaiian Pacific Islander, Two or More Races, and Other race/ethnicity categories left off these charts due to relatively low numbers

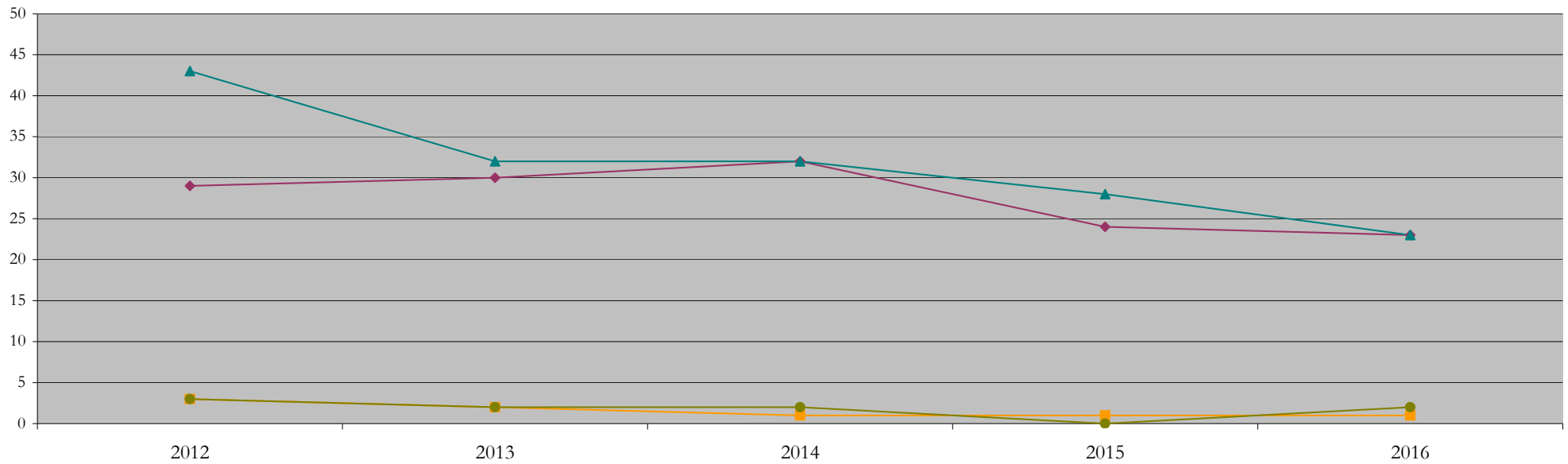
Total Enrollment (includes secondary curriculum)

by Race/Ethnicity

Curriculum_Studies_PHD [20FS5129PHD]

Fall 2012 through Fall 2016

Fall Semester Year	Total	Under Represented Minorities (URM)										Asian	Native Hawaiian or Pacific Islander	White	Two or More Races	International	Race/Eth Not Reported			
		American Indian or Alaska Native		Black or African American		Hispanic / Latino		URM Total												
		Count	%	Count	%	Count	%	Count	%											
2012	80	0	0.0	19	23.8	10	12.5	29	36.3	3	3.8	0	0.0	43	53.8	0	0.0	3	3.8	2
2013	68	0	0.0	18	26.5	12	17.6	30	44.1	2	2.9	0	0.0	32	47.1	0	0.0	2	2.9	2
2014	69	0	0.0	17	24.6	15	21.7	32	46.4	1	1.4	0	0.0	32	46.4	0	0.0	2	2.9	2
2015	55	0	0.0	13	23.6	11	20.0	24	43.6	1	1.8	0	0.0	28	50.9	0	0.0	0	0.0	2
2016	51	0	0.0	13	25.5	10	19.6	23	45.1	1	2.0	0	0.0	23	45.1	1	2.0	2	3.9	1



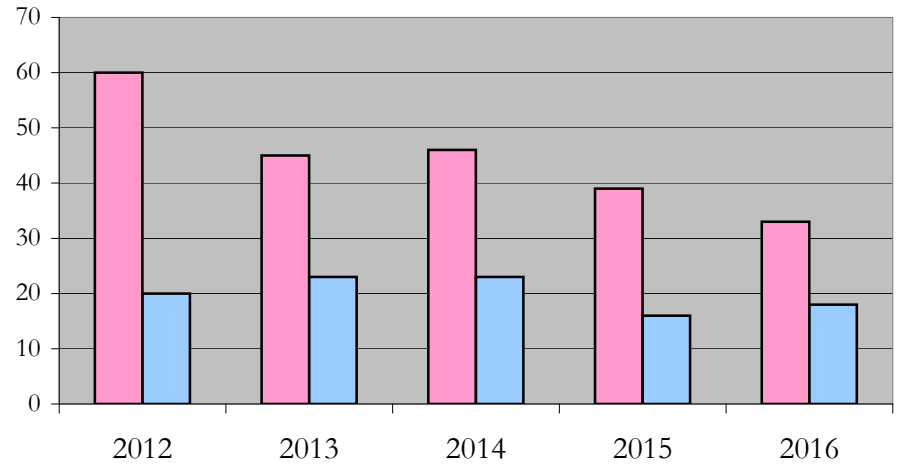
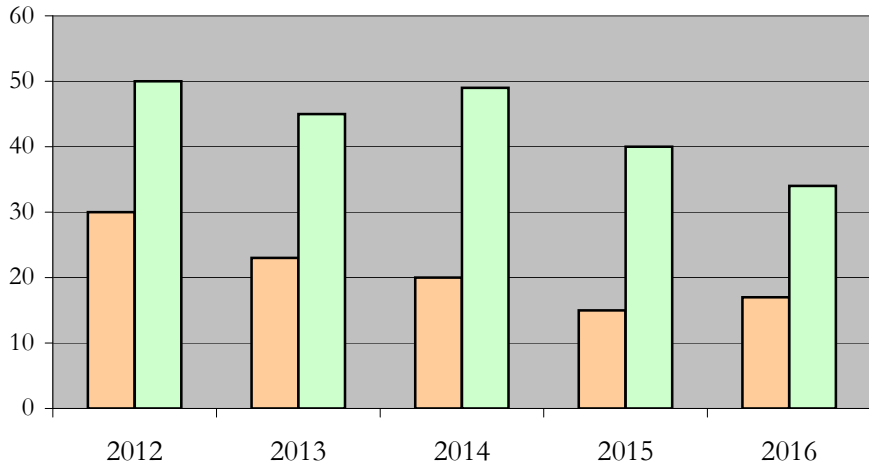
Notes: 1) URM stands for Under-Represented Minority and includes American Indian or Alaska Native; Black or African-American; Hispanic / Latino race/ethnicity groups
 2) Individual URM groups, Native Hawaiian Pacific Islander, Two or More Races, and Other race/ethnicity categories left off this chart due to relatively low numbers

**Total Enrollment (includes secondary curriculum)
by Student Type, Gender, and Enrollment Time**

Curriculum_Studies_PHD [20FS5129PHD]

Fall 2012 through Fall 2016

Fall Semester Year	Total	New		Continuing		Male		Female		Gender Not Reported	Part-time		Full-time	
		Count	%	Count	%	Count	%	Count	%		Count	%	Count	%
2012	80	9	11.3	71	88.8	30	37.5	50	62.5	0	60	75.0	20	25.0
2013	68	10	14.7	58	85.3	23	33.8	45	66.2	0	45	66.2	23	33.8
2014	69	10	14.5	59	85.5	20	29.0	49	71.0	0	46	66.7	23	33.3
2015	55	4	7.3	51	92.7	15	27.3	40	72.7	0	39	70.9	16	29.1
2016	51	0	0.0	51	100.0	17	33.3	34	66.7	0	33	64.7	18	35.3



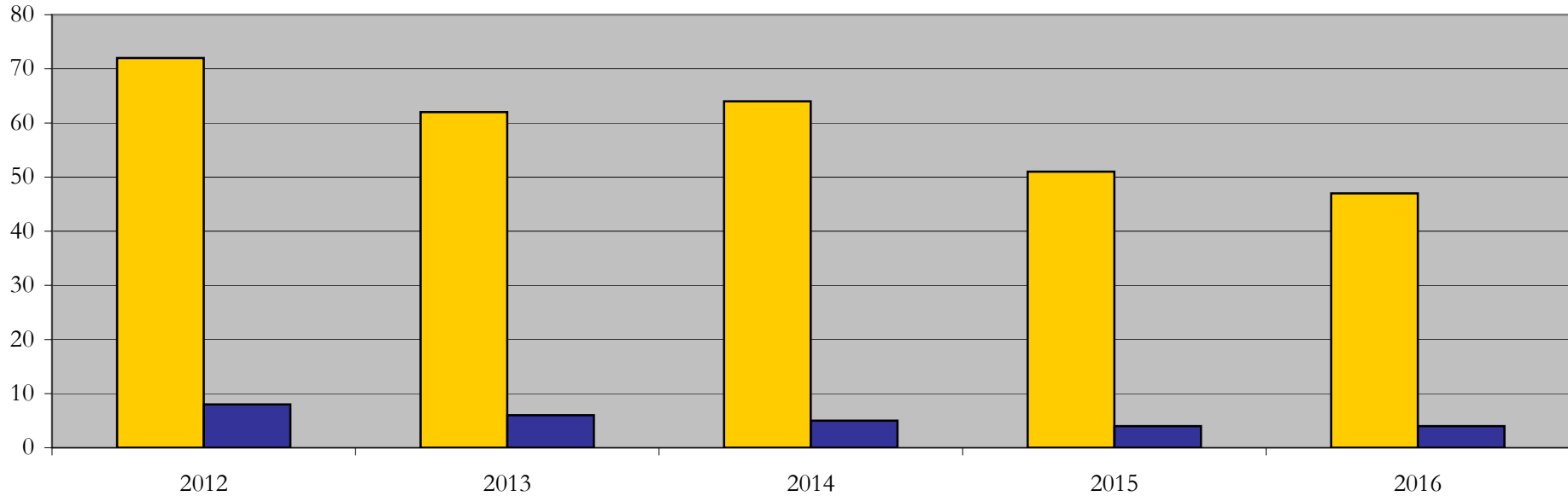
Enrollment & Degrees Conferred

by Primary/Secondary, Average Age, State Residency

Curriculum_Studies_PHD [20FS5129PHD]

Fall 2012 through Fall 2016

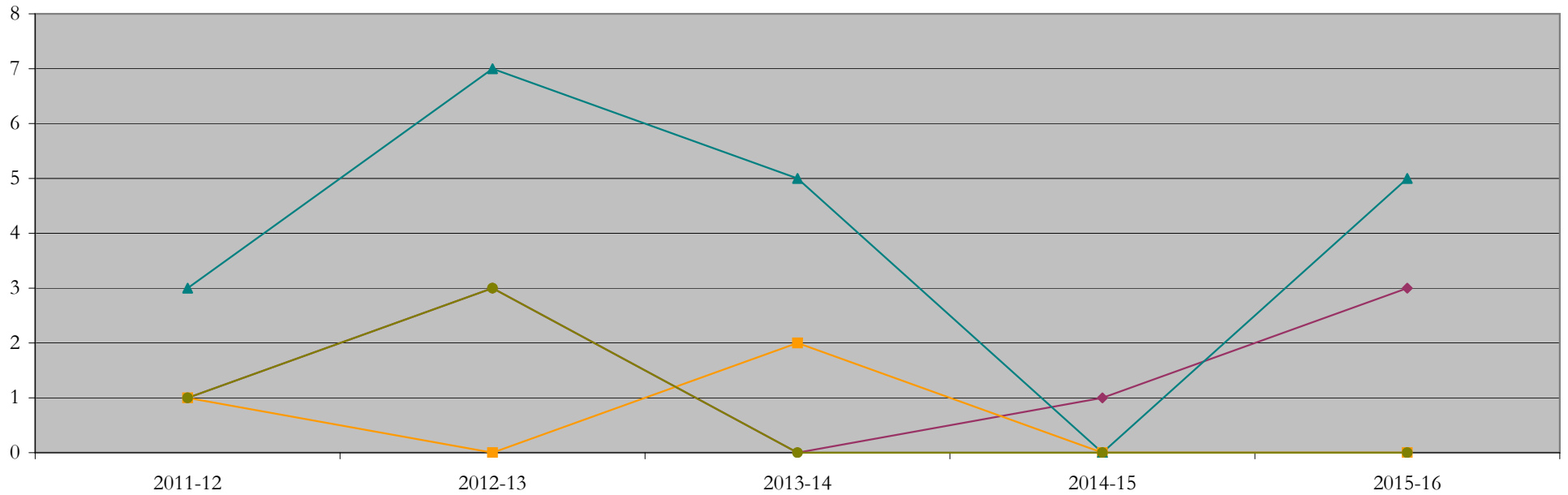
Fall Semester Year	Enrollment			Average Age			State Residency of Total Enrollment					
	Total	Primary	Secondary	Fall New Enrollment	Fall Continuing Enrollment	Academic Year Graduating Class	Residents			Non-Residents		
							Total Enrollment	New Enrollment	Continuing Enrollment	Total Enrollment	New Enrollment	Continuing Enrollment
2012	80	80	0	38	39	43	72	9	63	8	0	8
2013	68	68	0	34	39	37	62	9	53	6	1	5
2014	69	69	0	33	39	37	64	9	55	5	1	4
2015	55	55	0	48	39	25	51	2	49	4	2	2
2016	51	50	1	0	41	43	47	0	47	4	0	4



Degrees Conferred by Race/Ethnicity

Curriculum_Studies_PHD [20FS5129PHD]
AY2011-12 through 2015-16

Academic Year	Total	Under Represented Minorities (URM)								Asian		Native Hawaiian or Pacific		White		Two or More Races		International		Not Reported
		American Indian or Alaska Native		Black or African American		Hispanic / Latino		URM Total		Count	%	Count	%	Count	%	Count	%	Count	%	
		Count	%	Count	%	Count	%	Count	%											
2011 - 2012	6	0	0.0	0	0.0	1	16.7	1	16.7	1	16.7	0	0.0	3	50.0	0	0.0	1	16.7	0
2012 - 2013	13	0	0.0	2	15.4	1	7.7	3	23.1	0	0.0	0	0.0	7	53.8	0	0.0	3	23.1	0
2013 - 2014	7	0	0.0	0	0.0	0	0.0	0	0.0	2	28.6	0	0.0	5	71.4	0	0.0	0	0.0	0
2014 - 2015	1	0	0.0	0	0.0	1	100.0	1	100.0	0	0.0	0	0.0	0	0.0	0	0.0	0	0.0	0
2015 - 2016	8	0	0.0	1	12.5	2	25.0	3	37.5	0	0.0	0	0.0	5	62.5	0	0.0	0	0.0	0



Notes: 1) URM stands for Under-Represented Minority and includes American Indian or Alaska Native; Black or African-American; Hispanic / Latino race/ethnicity groups
2) Individual URM groups, Native Hawaiian Pacific Islander, Two or More Races, and Other race/ethnicity categories left off this chart due to relatively low numbers

Degrees Conferred

by Gender

Curriculum_Studies_PHD [20FS5129PHD]

AY2011-12 through 2015-16

Academic Year	Total	Male		Female		Not Reported
		Count	%	Count	%	
2011 - 2012	6	1	16.7	5	83.3	0
2012 - 2013	13	5	38.5	8	61.5	0
2013 - 2014	7	4	57.1	3	42.9	0
2014 - 2015	1	0	0.0	1	100.0	0
2015 - 2016	8	2	25.0	6	75.0	0

