

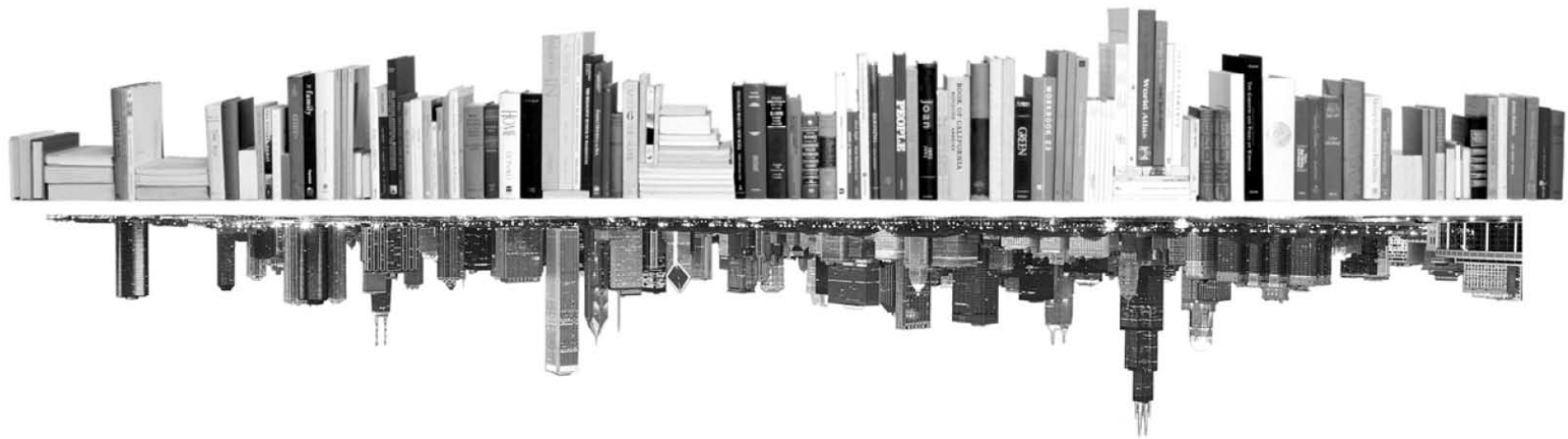
**GRADUATE  
COLLEGE**



---

**ENROLLMENT MANAGEMENT REPORT  
SCIENCE, TECHNOLOGY, ENGINEERING, AND MATHEMATICS  
FALL 2016**

---





---

---

## INTRODUCTION – SCIENCE, TECHNOLOGY, ENGINEERING, AND MATHEMATICS

---

---

The following profile report focuses on all Science, Technology, Engineering, and Mathematics programs.

This profile reports track students, not enrollments. This means that students with dual enrollments are reported only once—under their first program.

Kevin Monahan  
Director of Graduate Program Review and Information Systems  
Graduate College, University of Illinois at Chicago  
Voice: 312.413.0410 Email: kmonahan@uic.edu

---

---

## TABLE OF CONTENTS

---

---

|   |            |
|---|------------|
| MATRICULATION                                     |            |
| Diversity Pipeline                                | 1          |
| APPLICATIONS                                      |            |
| by Race/Ethnicity                                 | 2 – 5      |
| ENROLLMENT  |            |
| by Race/Ethnicity                                 | 6 – 9      |
| by Type, Time, & Gender                           | 10 – 13    |
| DEGREES   |            |
| Race/Ethnicity                                    | 14 – 15    |
| Gender  | 16 – 17    |
| List of academic programs included in this report | Appendix A |

**Matriculation**  
**Diversity Pipeline**  
STEM  
Fall 2012 - Fall 2016

|                                 | Fall Semester Year | Applied     |               |       |           |      | Admitted    |               |       |           |      | Non-URM Admitted to Applied Yield % | URM Admitted to Applied Yield % | New Enrollment |               |       |           |      | Non-URM Enrolled to Admitted Yield % | URM Enrolled to Admitted Yield % | Total Enrollment |               |       |           |       |
|---------------------------------|--------------------|-------------|---------------|-------|-----------|------|-------------|---------------|-------|-----------|------|-------------------------------------|---------------------------------|----------------|---------------|-------|-----------|------|--------------------------------------|----------------------------------|------------------|---------------|-------|-----------|-------|
|                                 |                    | Grand Total | Non-URM Total |       | URM Total |      | Grand Total | Non-URM Total |       | URM Total |      |                                     |                                 | Grand Total    | Non-URM Total |       | URM Total |      |                                      |                                  | Grand Total      | Non-URM Total |       | URM Total |       |
|                                 |                    |             | Count         | %     | Count     | %    |             | Count         | %     | Count     | %    |                                     |                                 |                | Count         | %     | Count     | %    |                                      |                                  |                  | Count         | %     | Count     | %     |
| All                             | 2012               | 5295        | 5021          | 94.8% | 274       | 5.2% | 2273        | 2180          | 95.9% | 93        | 4.1% | 43.4%                               | 33.9%                           | 799            | 744           | 93.1% | 55        | 6.9% | 34.1%                                | 59.1%                            | 2747             | 2519          | 91.7% | 228       | 8.3%  |
|                                 | 2013               | 6730        | 6428          | 95.5% | 302       | 4.5% | 2407        | 2293          | 95.3% | 114       | 4.7% | 35.7%                               | 37.7%                           | 711            | 646           | 90.9% | 65        | 9.1% | 28.2%                                | 57.0%                            | 2767             | 2530          | 91.4% | 237       | 8.6%  |
|                                 | 2014               | 7502        | 7190          | 95.8% | 312       | 4.2% | 2824        | 2722          | 96.4% | 102       | 3.6% | 37.9%                               | 32.7%                           | 850            | 789           | 92.8% | 61        | 7.2% | 29.0%                                | 59.8%                            | 2861             | 2621          | 91.6% | 240       | 8.4%  |
|                                 | 2015               | 7956        | 7676          | 96.5% | 280       | 3.5% | 3246        | 3131          | 96.5% | 115       | 3.5% | 40.8%                               | 41.1%                           | 1106           | 1050          | 94.9% | 56        | 5.1% | 33.5%                                | 48.7%                            | 3388             | 3126          | 92.3% | 262       | 7.7%  |
|                                 | 2016               | 8542        | 8243          | 96.5% | 299       | 3.5% | 3215        | 3072          | 95.6% | 143       | 4.4% | 37.3%                               | 47.8%                           | 897            | 815           | 90.9% | 82        | 9.1% | 26.5%                                | 57.3%                            | 3410             | 3122          | 91.6% | 288       | 8.4%  |
|                                 | Average            | 7205        | 6912          | 95.9% | 293       | 4.1% | 2793        | 2680          | 95.9% | 113       | 4.1% | 38.8%                               | 38.7%                           | 873            | 809           | 92.7% | 64        | 7.3% | 30.2%                                | 56.3%                            | 3035             | 2784          | 91.7% | 251       | 8.3%  |
| Masters & IBHE Certificate      | 2012               | 3236        | 3078          | 95.1% | 158       | 4.9% | 1685        | 1612          | 95.7% | 73        | 4.3% | 52.4%                               | 46.2%                           | 571            | 525           | 91.9% | 46        | 8.1% | 32.6%                                | 63.0%                            | 1485             | 1338          | 90.1% | 147       | 9.9%  |
|                                 | 2013               | 4671        | 4495          | 96.2% | 176       | 3.8% | 1865        | 1776          | 95.2% | 89        | 4.8% | 39.5%                               | 50.6%                           | 524            | 473           | 90.3% | 51        | 9.7% | 26.6%                                | 57.3%                            | 1554             | 1395          | 89.8% | 159       | 10.2% |
|                                 | 2014               | 5344        | 5172          | 96.8% | 172       | 3.2% | 2257        | 2175          | 96.4% | 82        | 3.6% | 42.1%                               | 47.7%                           | 654            | 602           | 92.0% | 52        | 8.0% | 27.7%                                | 63.4%                            | 1660             | 1497          | 90.2% | 163       | 9.8%  |
|                                 | 2015               | 6019        | 5833          | 96.9% | 186       | 3.1% | 2714        | 2616          | 96.4% | 98        | 3.6% | 44.8%                               | 52.7%                           | 893            | 841           | 94.2% | 52        | 5.8% | 32.1%                                | 53.1%                            | 2128             | 1943          | 91.3% | 185       | 8.7%  |
|                                 | 2016               | 6697        | 6503          | 97.1% | 194       | 2.9% | 2731        | 2616          | 95.8% | 115       | 4.2% | 40.2%                               | 59.3%                           | 704            | 637           | 90.5% | 67        | 9.5% | 24.4%                                | 58.3%                            | 2146             | 1946          | 90.7% | 200       | 9.3%  |
|                                 | Average            | 5193        | 5016          | 96.6% | 177       | 3.4% | 2250        | 2159          | 95.9% | 91        | 4.1% | 43.0%                               | 51.6%                           | 669            | 616           | 92.0% | 54        | 8.0% | 28.5%                                | 58.6%                            | 1795             | 1624          | 90.5% | 171       | 9.5%  |
| Doctorate                       | 2012               | 2059        | 1943          | 94.4% | 116       | 5.6% | 588         | 568           | 96.6% | 20        | 3.4% | 29.2%                               | 17.2%                           | 228            | 219           | 96.1% | 9         | 3.9% | 38.6%                                | 45.0%                            | 1262             | 1181          | 93.6% | 81        | 6.4%  |
|                                 | 2013               | 2059        | 1933          | 93.9% | 126       | 6.1% | 542         | 517           | 95.4% | 25        | 4.6% | 26.7%                               | 19.8%                           | 187            | 173           | 92.5% | 14        | 7.5% | 33.5%                                | 56.0%                            | 1213             | 1135          | 93.6% | 78        | 6.4%  |
|                                 | 2014               | 2158        | 2018          | 93.5% | 140       | 6.5% | 567         | 547           | 96.5% | 20        | 3.5% | 27.1%                               | 14.3%                           | 196            | 187           | 95.4% | 9         | 4.6% | 34.2%                                | 45.0%                            | 1201             | 1124          | 93.6% | 77        | 6.4%  |
|                                 | 2015               | 1937        | 1843          | 95.1% | 94        | 4.9% | 532         | 515           | 96.8% | 17        | 3.2% | 27.9%                               | 18.1%                           | 213            | 209           | 98.1% | 4         | 1.9% | 40.6%                                | 23.5%                            | 1260             | 1183          | 93.9% | 77        | 6.1%  |
|                                 | 2016               | 1845        | 1740          | 94.3% | 105       | 5.7% | 484         | 456           | 94.2% | 28        | 5.8% | 26.2%                               | 26.7%                           | 193            | 178           | 92.2% | 15        | 7.8% | 39.0%                                | 53.6%                            | 1264             | 1176          | 93.0% | 88        | 7.0%  |
|                                 | Average            | 2012        | 1895          | 94.2% | 116       | 5.8% | 543         | 521           | 95.9% | 22        | 4.1% | 27.5%                               | 18.9%                           | 203            | 193           | 95.0% | 10        | 5.0% | 37.1%                                | 46.4%                            | 1240             | 1160          | 93.5% | 80        | 6.5%  |
| Non-Degree & Campus Certificate | 2012               | 0           | 0             | 0.0%  | 0         | 0.0% | 0           | 0             | 0.0%  | 0         | 0.0% | 0.0%                                | 0.0%                            | 0              | 0             | 0.0%  | 0         | 0.0% | 0.0%                                 | 0.0%                             | 0                | 0             | 0.0%  | 0         | 0.0%  |
|                                 | 2013               | 0           | 0             | 0.0%  | 0         | 0.0% | 0           | 0             | 0.0%  | 0         | 0.0% | 0.0%                                | 0.0%                            | 0              | 0             | 0.0%  | 0         | 0.0% | 0.0%                                 | 0.0%                             | 0                | 0             | 0.0%  | 0         | 0.0%  |
|                                 | 2014               | 0           | 0             | 0.0%  | 0         | 0.0% | 0           | 0             | 0.0%  | 0         | 0.0% | 0.0%                                | 0.0%                            | 0              | 0             | 0.0%  | 0         | 0.0% | 0.0%                                 | 0.0%                             | 0                | 0             | 0.0%  | 0         | 0.0%  |
|                                 | 2015               | 0           | 0             | 0.0%  | 0         | 0.0% | 0           | 0             | 0.0%  | 0         | 0.0% | 0.0%                                | 0.0%                            | 0              | 0             | 0.0%  | 0         | 0.0% | 0.0%                                 | 0.0%                             | 0                | 0             | 0.0%  | 0         | 0.0%  |
|                                 | 2016               | 0           | 0             | 0.0%  | 0         | 0.0% | 0           | 0             | 0.0%  | 0         | 0.0% | 0.0%                                | 0.0%                            | 0              | 0             | 0.0%  | 0         | 0.0% | 0.0%                                 | 0.0%                             | 0                | 0             | 0.0%  | 0         | 0.0%  |
|                                 | Average            | 0           | 0             | 0.0%  | 0         | 0.0% | 0           | 0             | 0.0%  | 0         | 0.0% | 0.0%                                | 0.0%                            | 0              | 0             | 0.0%  | 0         | 0.0% | 0.0%                                 | 0.0%                             | 0                | 0             | 0.0%  | 0         | 0.0%  |

**Note:** URM stands for Under-Represented Minority and includes American Indian or Alaska Native; Black or African-American; Hispanic / Latino race/ethnicity groups

**Applications - Total  
by Race/Ethnicity**

STEM

Fall 2012 - Fall 2016

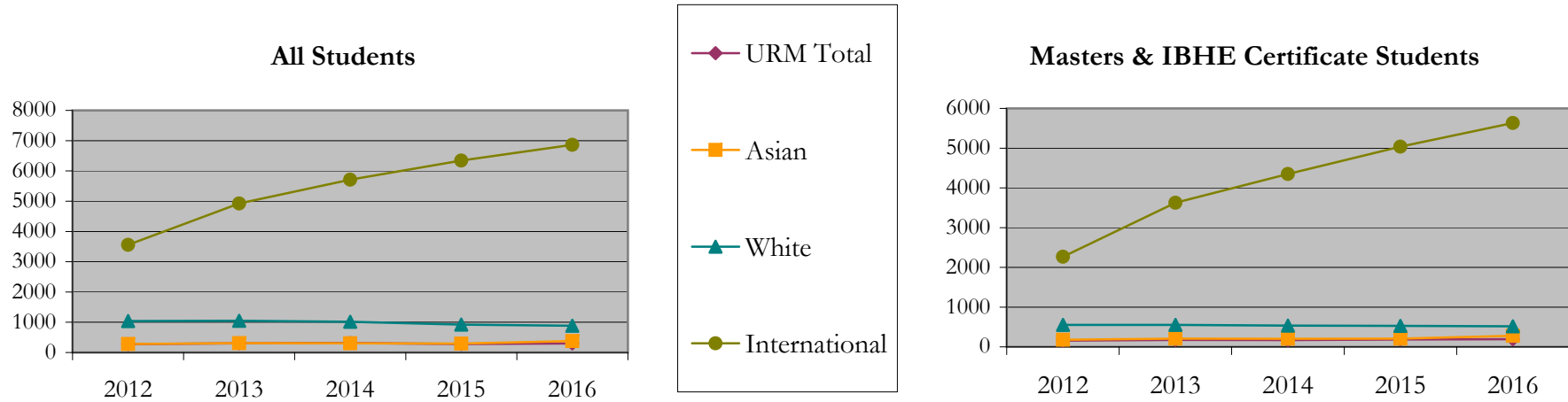
|                                 |      | Total | Under Represented Minorities (URM) |     |                           |     |                   |     |           |     |       |     |                                     |     |       |      |                   |     |               |      |              |
|---------------------------------|------|-------|------------------------------------|-----|---------------------------|-----|-------------------|-----|-----------|-----|-------|-----|-------------------------------------|-----|-------|------|-------------------|-----|---------------|------|--------------|
|                                 |      |       | American Indian or Alaska Native   |     | Black or African American |     | Hispanic / Latino |     | URM Total |     | Asian |     | Native Hawaiian or Pacific Islander |     | White |      | Two or More Races |     | International |      | Not Reported |
|                                 |      |       | Count                              | %   | Count                     | %   | Count             | %   | Count     | %   | Count | %   | Count                               | %   | Count | %    | Count             | %   | Count         | %    | Count        |
| All                             | 2012 | 5299  | 1                                  | 0.0 | 143                       | 2.7 | 130               | 2.5 | 274       | 5.2 | 282   | 5.3 | 5                                   | 0.1 | 1037  | 19.6 | 54                | 1.0 | 3559          | 67.2 | 88           |
|                                 | 2013 | 6730  | 5                                  | 0.1 | 138                       | 2.1 | 159               | 2.4 | 302       | 4.5 | 310   | 4.6 | 4                                   | 0.1 | 1047  | 15.6 | 54                | 0.8 | 4924          | 73.2 | 89           |
|                                 | 2014 | 7503  | 6                                  | 0.1 | 158                       | 2.1 | 148               | 2.0 | 312       | 4.2 | 306   | 4.1 | 1                                   | 0.0 | 1018  | 13.6 | 61                | 0.8 | 5711          | 76.1 | 94           |
|                                 | 2015 | 7956  | 4                                  | 0.1 | 136                       | 1.7 | 140               | 1.8 | 280       | 3.5 | 295   | 3.7 | 2                                   | 0.0 | 921   | 11.6 | 48                | 0.6 | 6342          | 79.7 | 68           |
|                                 | 2016 | 8542  | 8                                  | 0.1 | 127                       | 1.5 | 164               | 1.9 | 299       | 3.5 | 377   | 4.4 | 3                                   | 0.0 | 886   | 10.4 | 42                | 0.5 | 6864          | 80.4 | 71           |
| Masters & IBHE Certificate      | 2012 | 3239  | 1                                  | 0.0 | 82                        | 2.5 | 75                | 2.3 | 158       | 4.9 | 179   | 5.5 | 2                                   | 0.1 | 554   | 17.1 | 35                | 1.1 | 2266          | 70.0 | 45           |
|                                 | 2013 | 4658  | 3                                  | 0.1 | 85                        | 1.8 | 88                | 1.9 | 176       | 3.8 | 207   | 4.4 | 4                                   | 0.1 | 553   | 11.9 | 31                | 0.7 | 3627          | 77.9 | 60           |
|                                 | 2014 | 5344  | 4                                  | 0.1 | 95                        | 1.8 | 73                | 1.4 | 172       | 3.2 | 202   | 3.8 | 1                                   | 0.0 | 533   | 10.0 | 26                | 0.5 | 4350          | 81.4 | 60           |
|                                 | 2015 | 6019  | 2                                  | 0.0 | 97                        | 1.6 | 87                | 1.4 | 186       | 3.1 | 205   | 3.4 | 1                                   | 0.0 | 528   | 8.8  | 23                | 0.4 | 5036          | 83.7 | 40           |
|                                 | 2016 | 6697  | 6                                  | 0.1 | 95                        | 1.4 | 93                | 1.4 | 194       | 2.9 | 279   | 4.2 | 3                                   | 0.0 | 517   | 7.7  | 27                | 0.4 | 5632          | 84.1 | 45           |
| Doctorate                       | 2012 | 2060  | 0                                  | 0.0 | 61                        | 3.0 | 55                | 2.7 | 116       | 5.6 | 103   | 5.0 | 3                                   | 0.1 | 483   | 23.4 | 19                | 0.9 | 1293          | 62.8 | 43           |
|                                 | 2013 | 2072  | 2                                  | 0.1 | 53                        | 2.6 | 71                | 3.4 | 126       | 6.1 | 103   | 5.0 | 0                                   | 0.0 | 494   | 23.8 | 23                | 1.1 | 1297          | 62.6 | 29           |
|                                 | 2014 | 2159  | 2                                  | 0.1 | 63                        | 2.9 | 75                | 3.5 | 140       | 6.5 | 104   | 4.8 | 0                                   | 0.0 | 485   | 22.5 | 35                | 1.6 | 1361          | 63.0 | 34           |
|                                 | 2015 | 1937  | 2                                  | 0.1 | 39                        | 2.0 | 53                | 2.7 | 94        | 4.9 | 90    | 4.6 | 1                                   | 0.1 | 393   | 20.3 | 25                | 1.3 | 1306          | 67.4 | 28           |
|                                 | 2016 | 1845  | 2                                  | 0.1 | 32                        | 1.7 | 71                | 3.8 | 105       | 5.7 | 98    | 5.3 | 0                                   | 0.0 | 369   | 20.0 | 15                | 0.8 | 1232          | 66.8 | 26           |
| Non-Degree & Campus Certificate | 2012 | 0     | 0                                  | 0.0 | 0                         | 0.0 | 0                 | 0.0 | 0         | 0.0 | 0     | 0.0 | 0                                   | 0.0 | 0     | 0.0  | 0                 | 0.0 | 0             | 0.0  | 0            |
|                                 | 2013 | 0     | 0                                  | 0.0 | 0                         | 0.0 | 0                 | 0.0 | 0         | 0.0 | 0     | 0.0 | 0                                   | 0.0 | 0     | 0.0  | 0                 | 0.0 | 0             | 0.0  | 0            |
|                                 | 2014 | 0     | 0                                  | 0.0 | 0                         | 0.0 | 0                 | 0.0 | 0         | 0.0 | 0     | 0.0 | 0                                   | 0.0 | 0     | 0.0  | 0                 | 0.0 | 0             | 0.0  | 0            |
|                                 | 2015 | 0     | 0                                  | 0.0 | 0                         | 0.0 | 0                 | 0.0 | 0         | 0.0 | 0     | 0.0 | 0                                   | 0.0 | 0     | 0.0  | 0                 | 0.0 | 0             | 0.0  | 0            |
|                                 | 2016 | 0     | 0                                  | 0.0 | 0                         | 0.0 | 0                 | 0.0 | 0         | 0.0 | 0     | 0.0 | 0                                   | 0.0 | 0     | 0.0  | 0                 | 0.0 | 0             | 0.0  | 0            |

**Note:** URM stands for Under-Represented Minority and includes American Indian or Alaska Native; Black or African-American; Hispanic / Latino race/ethnicity groups

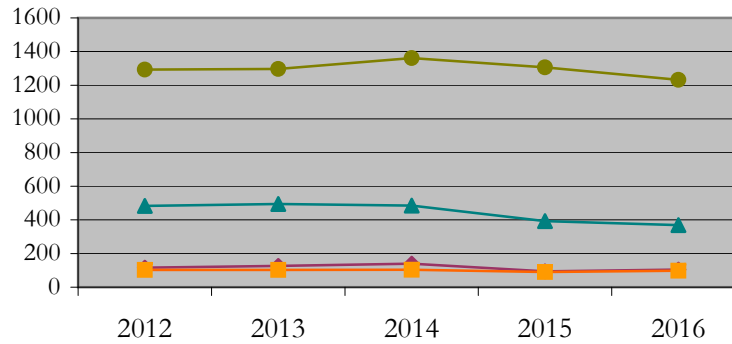
# Applications - Total by Race/Ethnicity

STEM

Fall 2012 - Fall 2016



## Doctorate Students



**Notes:** 1) URM stands for Under-Represented Minority and includes American Indian or Alaska Native; Black or African-American; Hispanic / Latino race/ethnicity groups  
 2) Individual URM groups, Native Hawaiian Pacific Islander, Two or More Races, and Other race/ethnicity categories left off this charts due to relatively low numbers

**Applications - Admitted  
by Race/Ethnicity**

STEM

Fall 2012 - Fall 2016

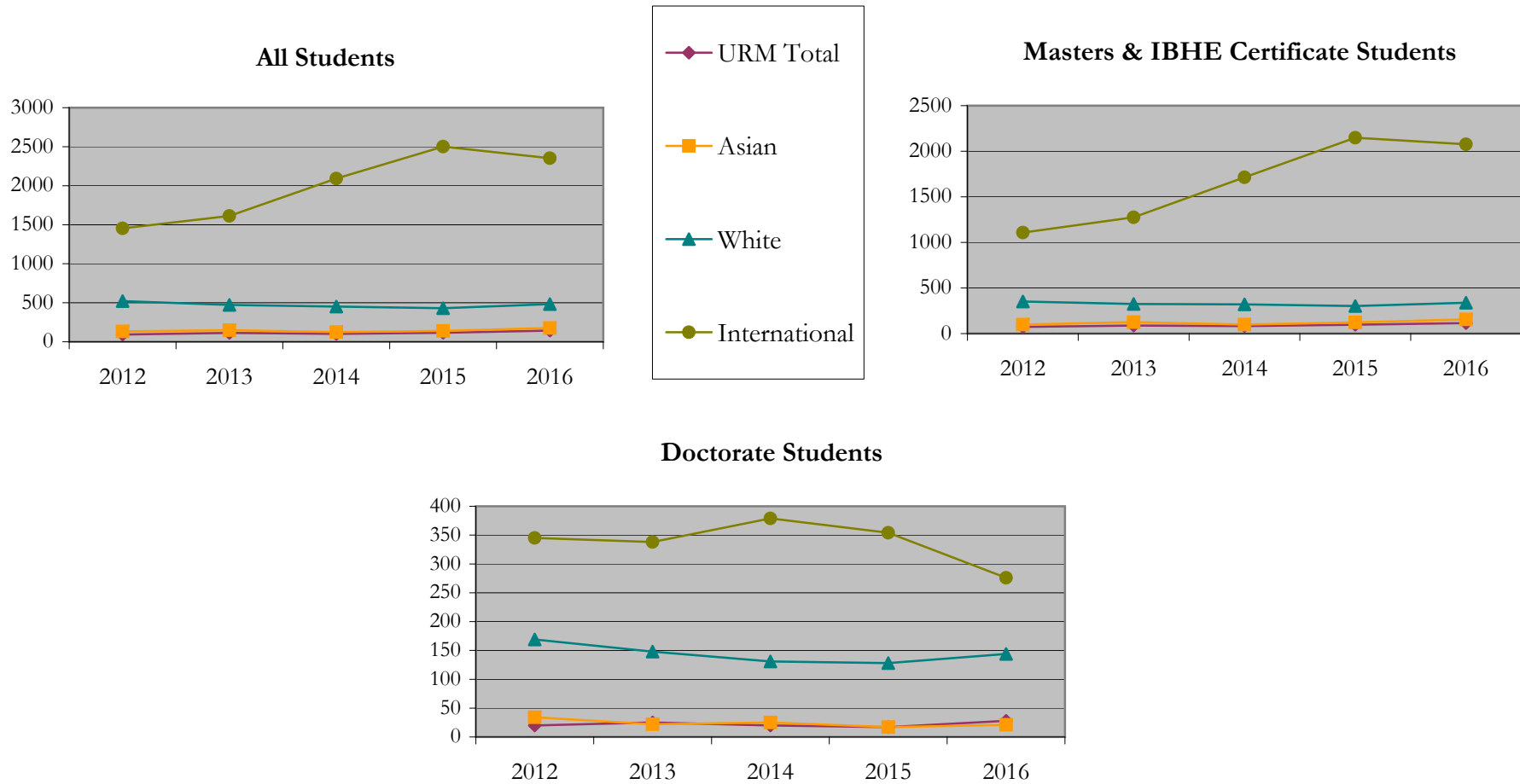
|                                 |      | Total | Under Represented Minorities (URM) |     |                           |     |                   |     |           |     | Asian |     | Native Hawaiian or Pacific Islander |     | White |      | Two or More Races |     | International |      | Not Reported |
|---------------------------------|------|-------|------------------------------------|-----|---------------------------|-----|-------------------|-----|-----------|-----|-------|-----|-------------------------------------|-----|-------|------|-------------------|-----|---------------|------|--------------|
|                                 |      |       | American Indian or Alaska Native   |     | Black or African American |     | Hispanic / Latino |     | URM Total |     |       |     |                                     |     |       |      |                   |     |               |      |              |
|                                 |      |       | Count                              | %   | Count                     | %   | Count             | %   | Count     | %   |       |     |                                     |     |       |      |                   |     |               |      |              |
| All                             | 2012 | 2273  | 0                                  | 0.0 | 43                        | 1.9 | 50                | 2.2 | 93        | 4.1 | 133   | 5.9 | 2                                   | 0.1 | 521   | 22.9 | 24                | 1.1 | 1453          | 63.9 | 47           |
|                                 | 2013 | 2407  | 1                                  | 0.0 | 52                        | 2.2 | 61                | 2.5 | 114       | 4.7 | 148   | 6.1 | 2                                   | 0.1 | 473   | 19.7 | 25                | 1.0 | 1613          | 67.0 | 32           |
|                                 | 2014 | 2824  | 4                                  | 0.1 | 41                        | 1.5 | 57                | 2.0 | 102       | 3.6 | 124   | 4.4 | 0                                   | 0.0 | 451   | 16.0 | 21                | 0.7 | 2093          | 74.1 | 33           |
|                                 | 2015 | 3246  | 2                                  | 0.1 | 51                        | 1.6 | 62                | 1.9 | 115       | 3.5 | 140   | 4.3 | 1                                   | 0.0 | 431   | 13.3 | 20                | 0.6 | 2502          | 77.1 | 37           |
|                                 | 2016 | 3215  | 4                                  | 0.1 | 62                        | 1.9 | 77                | 2.4 | 143       | 4.4 | 176   | 5.5 | 1                                   | 0.0 | 482   | 15.0 | 26                | 0.8 | 2353          | 73.2 | 34           |
| Masters & IBHE Certificate      | 2012 | 1685  | 0                                  | 0.0 | 37                        | 2.2 | 36                | 2.1 | 73        | 4.3 | 99    | 5.9 | 2                                   | 0.1 | 352   | 20.9 | 18                | 1.1 | 1108          | 65.8 | 33           |
|                                 | 2013 | 1865  | 1                                  | 0.1 | 45                        | 2.4 | 43                | 2.3 | 89        | 4.8 | 126   | 6.8 | 2                                   | 0.1 | 325   | 17.4 | 18                | 1.0 | 1275          | 68.4 | 30           |
|                                 | 2014 | 2257  | 3                                  | 0.1 | 37                        | 1.6 | 42                | 1.9 | 82        | 3.6 | 99    | 4.4 | 0                                   | 0.0 | 320   | 14.2 | 15                | 0.7 | 1714          | 75.9 | 27           |
|                                 | 2015 | 2714  | 2                                  | 0.1 | 46                        | 1.7 | 50                | 1.8 | 98        | 3.6 | 123   | 4.5 | 1                                   | 0.0 | 303   | 11.2 | 11                | 0.4 | 2148          | 79.1 | 30           |
|                                 | 2016 | 2731  | 3                                  | 0.1 | 54                        | 2.0 | 58                | 2.1 | 115       | 4.2 | 155   | 5.7 | 1                                   | 0.0 | 338   | 12.4 | 20                | 0.7 | 2077          | 76.1 | 25           |
| Doctorate                       | 2012 | 588   | 0                                  | 0.0 | 6                         | 1.0 | 14                | 2.4 | 20        | 3.4 | 34    | 5.8 | 0                                   | 0.0 | 169   | 28.7 | 6                 | 1.0 | 345           | 58.7 | 14           |
|                                 | 2013 | 542   | 0                                  | 0.0 | 7                         | 1.3 | 18                | 3.3 | 25        | 4.6 | 22    | 4.1 | 0                                   | 0.0 | 148   | 27.3 | 7                 | 1.3 | 338           | 62.4 | 2            |
|                                 | 2014 | 567   | 1                                  | 0.2 | 4                         | 0.7 | 15                | 2.6 | 20        | 3.5 | 25    | 4.4 | 0                                   | 0.0 | 131   | 23.1 | 6                 | 1.1 | 379           | 66.8 | 6            |
|                                 | 2015 | 532   | 0                                  | 0.0 | 5                         | 0.9 | 12                | 2.3 | 17        | 3.2 | 17    | 3.2 | 0                                   | 0.0 | 128   | 24.1 | 9                 | 1.7 | 354           | 66.5 | 7            |
|                                 | 2016 | 484   | 1                                  | 0.2 | 8                         | 1.7 | 19                | 3.9 | 28        | 5.8 | 21    | 4.3 | 0                                   | 0.0 | 144   | 29.8 | 6                 | 1.2 | 276           | 57.0 | 9            |
| Non-Degree & Campus Certificate | 2012 | 0     | 0                                  | 0.0 | 0                         | 0.0 | 0                 | 0.0 | 0         | 0.0 | 0     | 0.0 | 0                                   | 0.0 | 0     | 0.0  | 0                 | 0.0 | 0             | 0.0  | 0            |
|                                 | 2013 | 0     | 0                                  | 0.0 | 0                         | 0.0 | 0                 | 0.0 | 0         | 0.0 | 0     | 0.0 | 0                                   | 0.0 | 0     | 0.0  | 0                 | 0.0 | 0             | 0.0  | 0            |
|                                 | 2014 | 0     | 0                                  | 0.0 | 0                         | 0.0 | 0                 | 0.0 | 0         | 0.0 | 0     | 0.0 | 0                                   | 0.0 | 0     | 0.0  | 0                 | 0.0 | 0             | 0.0  | 0            |
|                                 | 2015 | 0     | 0                                  | 0.0 | 0                         | 0.0 | 0                 | 0.0 | 0         | 0.0 | 0     | 0.0 | 0                                   | 0.0 | 0     | 0.0  | 0                 | 0.0 | 0             | 0.0  | 0            |
|                                 | 2016 | 0     | 0                                  | 0.0 | 0                         | 0.0 | 0                 | 0.0 | 0         | 0.0 | 0     | 0.0 | 0                                   | 0.0 | 0     | 0.0  | 0                 | 0.0 | 0             | 0.0  | 0            |

**Note:** URM stands for Under-Represented Minority and includes American Indian or Alaska Native; Black or African-American; Hispanic / Latino race/ethnicity groups

# Applications - Admitted by Race/Ethnicity

STEM

Fall 2012 - Fall 2016



**Notes:** 1) URM stands for Under-Represented Minority and includes American Indian or Alaska Native; Black or African-American; Hispanic / Latino race/ethnicity groups  
 2) Individual URM groups, Native Hawaiian Pacific Islander, Two or More Races, and Other race/ethnicity categories left off this charts due to relatively low numbers

**Enrollment - New  
by Race/Ethnicity**

STEM

Fall 2012 - Fall 2016

|                                 |      | Total | Under Represented Minorities (URM) |     |                           |     |                   |     |           |     | Asian |      | Native Hawaiian or Pacific Islander |     | White |      | Two or More Races |     | International |      | Not Reported |
|---------------------------------|------|-------|------------------------------------|-----|---------------------------|-----|-------------------|-----|-----------|-----|-------|------|-------------------------------------|-----|-------|------|-------------------|-----|---------------|------|--------------|
|                                 |      |       | American Indian or Alaska Native   |     | Black or African American |     | Hispanic / Latino |     | URM Total |     |       |      |                                     |     |       |      |                   |     |               |      |              |
|                                 |      |       | Count                              | %   | Count                     | %   | Count             | %   | Count     | %   |       |      |                                     |     |       |      |                   |     |               |      |              |
| All                             | 2012 | 799   | 0                                  | 0.0 | 24                        | 3.0 | 31                | 3.9 | 55        | 6.9 | 69    | 8.6  | 0                                   | 0.0 | 283   | 35.4 | 8                 | 1.0 | 367           | 45.9 | 17           |
|                                 | 2013 | 711   | 1                                  | 0.1 | 29                        | 4.1 | 35                | 4.9 | 65        | 9.1 | 65    | 9.1  | 3                                   | 0.4 | 230   | 32.3 | 11                | 1.5 | 329           | 46.3 | 8            |
|                                 | 2014 | 850   | 0                                  | 0.0 | 29                        | 3.4 | 32                | 3.8 | 61        | 7.2 | 52    | 6.1  | 0                                   | 0.0 | 222   | 26.1 | 9                 | 1.1 | 496           | 58.4 | 10           |
|                                 | 2015 | 1106  | 0                                  | 0.0 | 30                        | 2.7 | 26                | 2.4 | 56        | 5.1 | 65    | 5.9  | 0                                   | 0.0 | 229   | 20.7 | 9                 | 0.8 | 727           | 65.7 | 20           |
|                                 | 2016 | 897   | 4                                  | 0.4 | 34                        | 3.8 | 44                | 4.9 | 82        | 9.1 | 75    | 8.4  | 1                                   | 0.1 | 241   | 26.9 | 12                | 1.3 | 480           | 53.5 | 6            |
| Masters & IBHE Certificate      | 2012 | 571   | 0                                  | 0.0 | 20                        | 3.5 | 26                | 4.6 | 46        | 8.1 | 51    | 8.9  | 0                                   | 0.0 | 200   | 35.0 | 8                 | 1.4 | 254           | 44.5 | 12           |
|                                 | 2013 | 524   | 1                                  | 0.2 | 25                        | 4.8 | 25                | 4.8 | 51        | 9.7 | 54    | 10.3 | 3                                   | 0.6 | 164   | 31.3 | 10                | 1.9 | 235           | 44.8 | 7            |
|                                 | 2014 | 654   | 0                                  | 0.0 | 26                        | 4.0 | 26                | 4.0 | 52        | 8.0 | 39    | 6.0  | 0                                   | 0.0 | 161   | 24.6 | 5                 | 0.8 | 390           | 59.6 | 7            |
|                                 | 2015 | 893   | 0                                  | 0.0 | 28                        | 3.1 | 24                | 2.7 | 52        | 5.8 | 59    | 6.6  | 0                                   | 0.0 | 165   | 18.5 | 5                 | 0.6 | 592           | 66.3 | 20           |
|                                 | 2016 | 704   | 3                                  | 0.4 | 31                        | 4.4 | 33                | 4.7 | 67        | 9.5 | 62    | 8.8  | 1                                   | 0.1 | 175   | 24.9 | 8                 | 1.1 | 386           | 54.8 | 5            |
| Doctorate                       | 2012 | 228   | 0                                  | 0.0 | 4                         | 1.8 | 5                 | 2.2 | 9         | 3.9 | 18    | 7.9  | 0                                   | 0.0 | 83    | 36.4 | 0                 | 0.0 | 113           | 49.6 | 5            |
|                                 | 2013 | 187   | 0                                  | 0.0 | 4                         | 2.1 | 10                | 5.3 | 14        | 7.5 | 11    | 5.9  | 0                                   | 0.0 | 66    | 35.3 | 1                 | 0.5 | 94            | 50.3 | 1            |
|                                 | 2014 | 196   | 0                                  | 0.0 | 3                         | 1.5 | 6                 | 3.1 | 9         | 4.6 | 13    | 6.6  | 0                                   | 0.0 | 61    | 31.1 | 4                 | 2.0 | 106           | 54.1 | 3            |
|                                 | 2015 | 213   | 0                                  | 0.0 | 2                         | 0.9 | 2                 | 0.9 | 4         | 1.9 | 6     | 2.8  | 0                                   | 0.0 | 64    | 30.0 | 4                 | 1.9 | 135           | 63.4 | 0            |
|                                 | 2016 | 193   | 1                                  | 0.5 | 3                         | 1.6 | 11                | 5.7 | 15        | 7.8 | 13    | 6.7  | 0                                   | 0.0 | 66    | 34.2 | 4                 | 2.1 | 94            | 48.7 | 1            |
| Non-Degree & Campus Certificate | 2012 | 0     | 0                                  | 0.0 | 0                         | 0.0 | 0                 | 0.0 | 0         | 0.0 | 0     | 0.0  | 0                                   | 0.0 | 0     | 0.0  | 0                 | 0.0 | 0             | 0.0  | 0            |
|                                 | 2013 | 0     | 0                                  | 0.0 | 0                         | 0.0 | 0                 | 0.0 | 0         | 0.0 | 0     | 0.0  | 0                                   | 0.0 | 0     | 0.0  | 0                 | 0.0 | 0             | 0.0  | 0            |
|                                 | 2014 | 0     | 0                                  | 0.0 | 0                         | 0.0 | 0                 | 0.0 | 0         | 0.0 | 0     | 0.0  | 0                                   | 0.0 | 0     | 0.0  | 0                 | 0.0 | 0             | 0.0  | 0            |
|                                 | 2015 | 0     | 0                                  | 0.0 | 0                         | 0.0 | 0                 | 0.0 | 0         | 0.0 | 0     | 0.0  | 0                                   | 0.0 | 0     | 0.0  | 0                 | 0.0 | 0             | 0.0  | 0            |
|                                 | 2016 | 0     | 0                                  | 0.0 | 0                         | 0.0 | 0                 | 0.0 | 0         | 0.0 | 0     | 0.0  | 0                                   | 0.0 | 0     | 0.0  | 0                 | 0.0 | 0             | 0.0  | 0            |

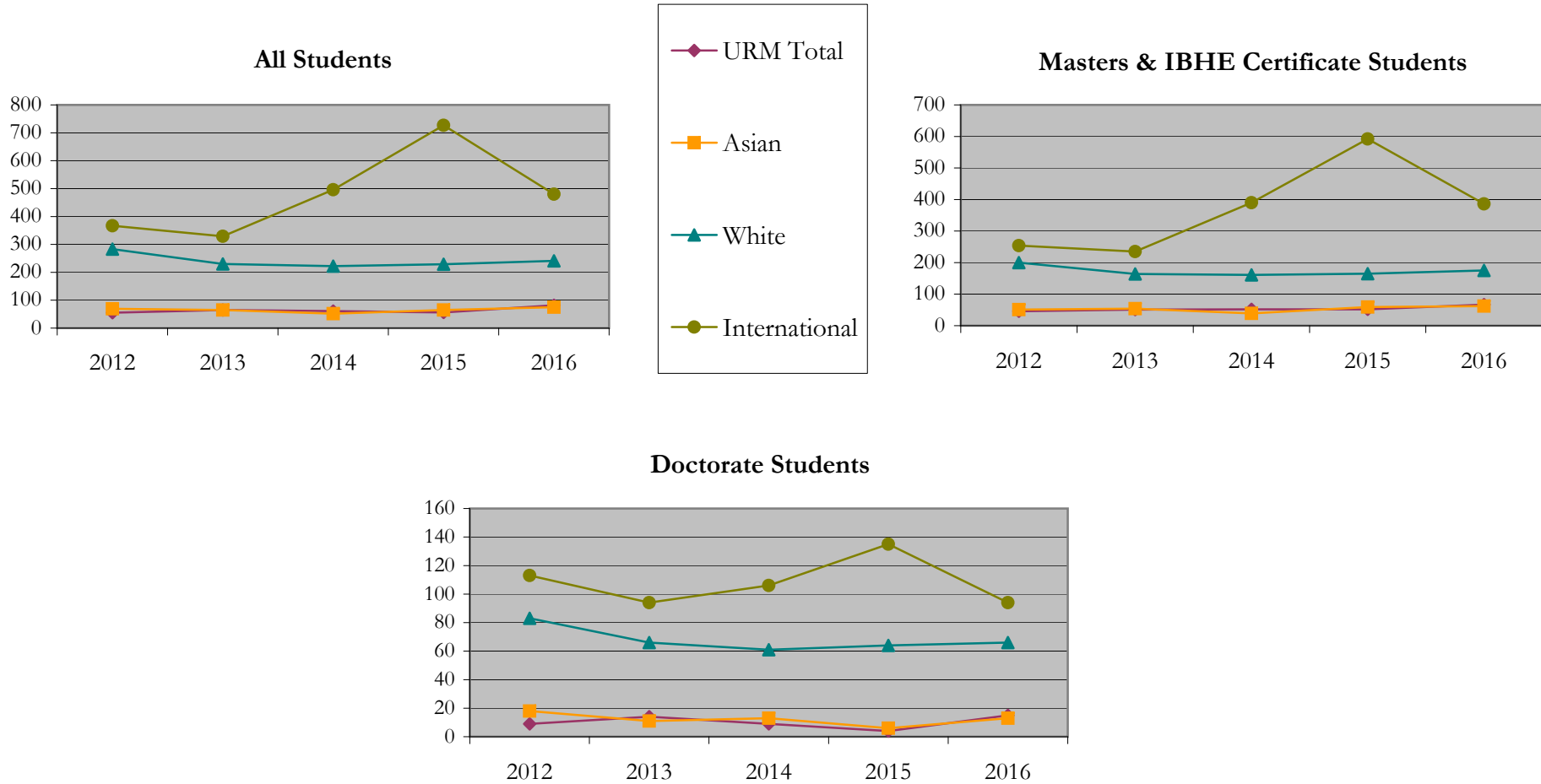
**Note:** URM stands for Under-Represented Minority and includes American Indian or Alaska Native; Black or African-American; Hispanic / Latino race/ethnicity groups



# Enrollment - New by Race/Ethnicity

STEM

Fall 2012 - Fall 2016



**Notes:** 1) URM stands for Under-Represented Minority and includes American Indian or Alaska Native; Black or African-American; Hispanic / Latino race/ethnicity groups

2) Individual URM groups, Native Hawaiian Pacific Islander, Two or More Races, and Other race/ethnicity categories left off this charts due to relatively low numbers

**Enrollment - Total  
by Race/Ethnicity**

STEM

Fall 2012 - Fall 2016

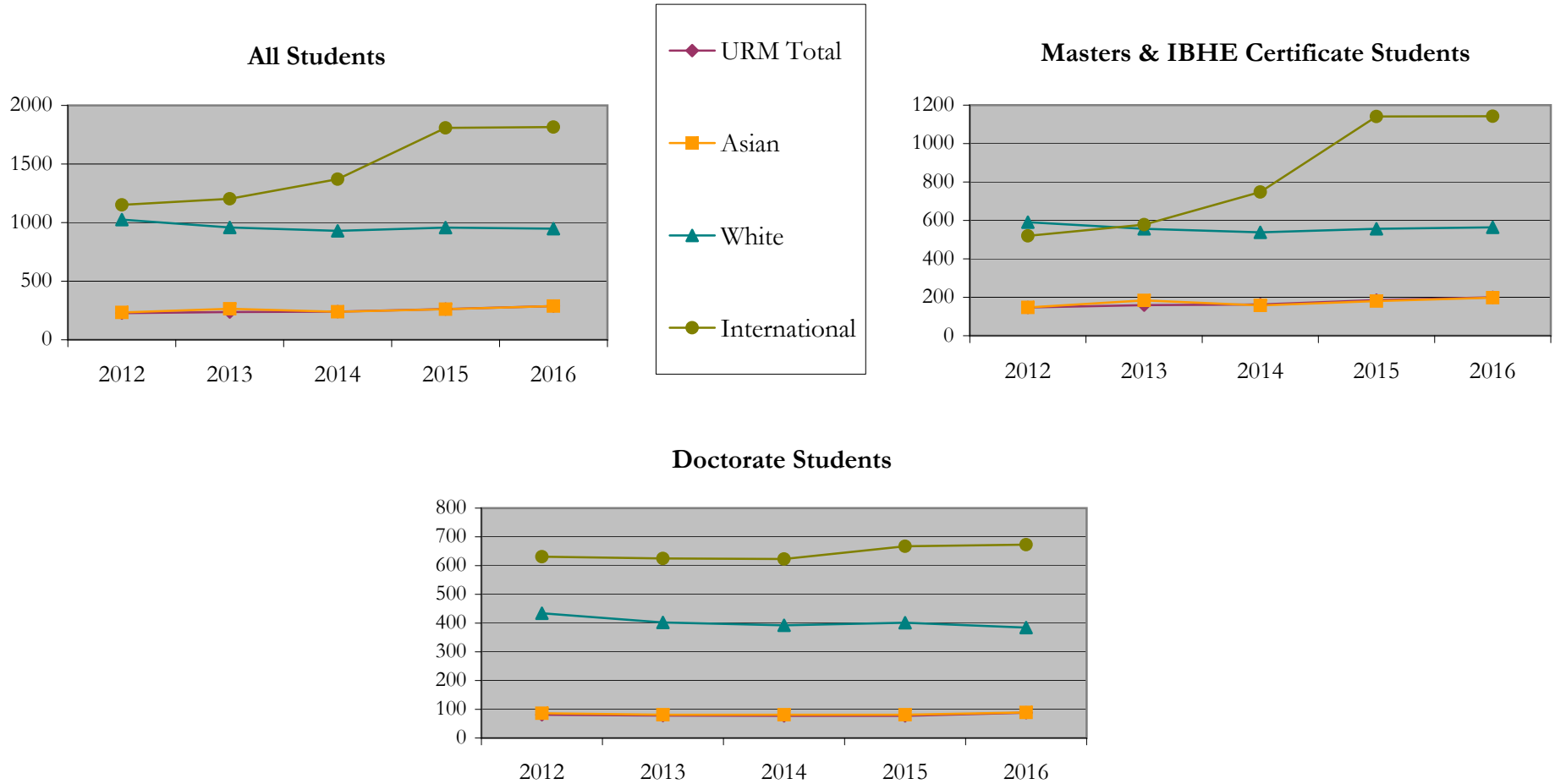
|                                 |      | Total | Under Represented Minorities (URM) |     |                           |     |                   |     |           |      | Asian |      | Native Hawaiian or Pacific Islander |     | White |      | Two or More Races |     | International |      | Not Reported |
|---------------------------------|------|-------|------------------------------------|-----|---------------------------|-----|-------------------|-----|-----------|------|-------|------|-------------------------------------|-----|-------|------|-------------------|-----|---------------|------|--------------|
|                                 |      |       | American Indian or Alaska Native   |     | Black or African American |     | Hispanic / Latino |     | URM Total |      |       |      |                                     |     |       |      |                   |     |               |      |              |
|                                 |      |       | Count                              | %   | Count                     | %   | Count             | %   | Count     | %    |       |      |                                     |     |       |      |                   |     |               |      |              |
| All                             | 2012 | 2747  | 2                                  | 0.1 | 115                       | 4.2 | 111               | 4.0 | 228       | 8.3  | 233   | 8.5  | 4                                   | 0.1 | 1025  | 37.3 | 39                | 1.4 | 1151          | 41.9 | 67           |
|                                 | 2013 | 2767  | 3                                  | 0.1 | 119                       | 4.3 | 115               | 4.2 | 237       | 8.6  | 265   | 9.6  | 5                                   | 0.2 | 958   | 34.6 | 38                | 1.4 | 1203          | 43.5 | 61           |
|                                 | 2014 | 2861  | 3                                  | 0.1 | 114                       | 4.0 | 123               | 4.3 | 240       | 8.4  | 239   | 8.4  | 2                                   | 0.1 | 930   | 32.5 | 31                | 1.1 | 1371          | 47.9 | 48           |
|                                 | 2015 | 3388  | 1                                  | 0.0 | 130                       | 3.8 | 131               | 3.9 | 262       | 7.7  | 261   | 7.7  | 2                                   | 0.1 | 957   | 28.2 | 40                | 1.2 | 1808          | 53.4 | 58           |
|                                 | 2016 | 3410  | 5                                  | 0.1 | 144                       | 4.2 | 139               | 4.1 | 288       | 8.4  | 287   | 8.4  | 1                                   | 0.0 | 948   | 27.8 | 43                | 1.3 | 1815          | 53.2 | 28           |
| Masters & IBHE Certificate      | 2012 | 1485  | 2                                  | 0.1 | 86                        | 5.8 | 59                | 4.0 | 147       | 9.9  | 147   | 9.9  | 3                                   | 0.2 | 591   | 39.8 | 25                | 1.7 | 520           | 35.0 | 52           |
|                                 | 2013 | 1554  | 3                                  | 0.2 | 93                        | 6.0 | 63                | 4.1 | 159       | 10.2 | 184   | 11.8 | 5                                   | 0.3 | 556   | 35.8 | 23                | 1.5 | 578           | 37.2 | 49           |
|                                 | 2014 | 1660  | 3                                  | 0.2 | 89                        | 5.4 | 71                | 4.3 | 163       | 9.8  | 158   | 9.5  | 2                                   | 0.1 | 538   | 32.4 | 16                | 1.0 | 748           | 45.1 | 35           |
|                                 | 2015 | 2128  | 1                                  | 0.0 | 101                       | 4.7 | 83                | 3.9 | 185       | 8.7  | 180   | 8.5  | 2                                   | 0.1 | 556   | 26.1 | 20                | 0.9 | 1141          | 53.6 | 44           |
|                                 | 2016 | 2146  | 4                                  | 0.2 | 106                       | 4.9 | 90                | 4.2 | 200       | 9.3  | 198   | 9.2  | 1                                   | 0.0 | 564   | 26.3 | 24                | 1.1 | 1142          | 53.2 | 17           |
| Doctorate                       | 2012 | 1262  | 0                                  | 0.0 | 29                        | 2.3 | 52                | 4.1 | 81        | 6.4  | 86    | 6.8  | 1                                   | 0.1 | 434   | 34.4 | 14                | 1.1 | 631           | 50.0 | 15           |
|                                 | 2013 | 1213  | 0                                  | 0.0 | 26                        | 2.1 | 52                | 4.3 | 78        | 6.4  | 81    | 6.7  | 0                                   | 0.0 | 402   | 33.1 | 15                | 1.2 | 625           | 51.5 | 12           |
|                                 | 2014 | 1201  | 0                                  | 0.0 | 25                        | 2.1 | 52                | 4.3 | 77        | 6.4  | 81    | 6.7  | 0                                   | 0.0 | 392   | 32.6 | 15                | 1.2 | 623           | 51.9 | 13           |
|                                 | 2015 | 1260  | 0                                  | 0.0 | 29                        | 2.3 | 48                | 3.8 | 77        | 6.1  | 81    | 6.4  | 0                                   | 0.0 | 401   | 31.8 | 20                | 1.6 | 667           | 52.9 | 14           |
|                                 | 2016 | 1264  | 1                                  | 0.1 | 38                        | 3.0 | 49                | 3.9 | 88        | 7.0  | 89    | 7.0  | 0                                   | 0.0 | 384   | 30.4 | 19                | 1.5 | 673           | 53.2 | 11           |
| Non-Degree & Campus Certificate | 2012 | 0     | 0                                  | 0.0 | 0                         | 0.0 | 0                 | 0.0 | 0         | 0.0  | 0     | 0.0  | 0                                   | 0.0 | 0     | 0.0  | 0                 | 0.0 | 0             | 0.0  | 0            |
|                                 | 2013 | 0     | 0                                  | 0.0 | 0                         | 0.0 | 0                 | 0.0 | 0         | 0.0  | 0     | 0.0  | 0                                   | 0.0 | 0     | 0.0  | 0                 | 0.0 | 0             | 0.0  | 0            |
|                                 | 2014 | 0     | 0                                  | 0.0 | 0                         | 0.0 | 0                 | 0.0 | 0         | 0.0  | 0     | 0.0  | 0                                   | 0.0 | 0     | 0.0  | 0                 | 0.0 | 0             | 0.0  | 0            |
|                                 | 2015 | 0     | 0                                  | 0.0 | 0                         | 0.0 | 0                 | 0.0 | 0         | 0.0  | 0     | 0.0  | 0                                   | 0.0 | 0     | 0.0  | 0                 | 0.0 | 0             | 0.0  | 0            |
|                                 | 2016 | 0     | 0                                  | 0.0 | 0                         | 0.0 | 0                 | 0.0 | 0         | 0.0  | 0     | 0.0  | 0                                   | 0.0 | 0     | 0.0  | 0                 | 0.0 | 0             | 0.0  | 0            |

**Note:** URM stands for Under-Represented Minority and includes American Indian or Alaska Native; Black or African-American; Hispanic / Latino race/ethnicity groups

# Enrollment - Total by Race/Ethnicity

STEM

Fall 2012 - Fall 2016



**Notes:** 1) URM stands for Under-Represented Minority and includes American Indian or Alaska Native; Black or African-American; Hispanic / Latino race/ethnicity groups

2) Individual URM groups, Native Hawaiian Pacific Islander, Two or More Races, and Other race/ethnicity categories left off this charts due to relatively low numbers

**Enrollment**  
**by Student Type, Enrollment Time, and Gender**

STEM

Fall 2012 - Fall 2016

|                                 |      | Total | New   |      | Continuing |      | Male  |      | Female |      | Gender Not Reported | Part-time |      | Full-time |      |
|---------------------------------|------|-------|-------|------|------------|------|-------|------|--------|------|---------------------|-----------|------|-----------|------|
|                                 |      |       | Count | %    | Count      | %    | Count | %    | Count  | %    |                     | Count     | %    | Count     | %    |
| All                             | 2012 | 2747  | 799   | 29.1 | 1948       | 70.9 | 1553  | 56.5 | 1189   | 43.3 | 5                   | 771       | 28.1 | 1975      | 71.9 |
|                                 | 2013 | 2767  | 711   | 25.7 | 2056       | 74.3 | 1553  | 56.1 | 1207   | 43.6 | 7                   | 791       | 28.6 | 1976      | 71.4 |
|                                 | 2014 | 2861  | 850   | 29.7 | 2011       | 70.3 | 1603  | 56.0 | 1250   | 43.7 | 8                   | 726       | 25.4 | 2135      | 74.6 |
|                                 | 2015 | 3388  | 1106  | 32.6 | 2282       | 67.4 | 1979  | 58.4 | 1397   | 41.2 | 12                  | 840       | 24.8 | 2548      | 75.2 |
|                                 | 2016 | 3410  | 897   | 26.3 | 2513       | 73.7 | 1982  | 58.1 | 1422   | 41.7 | 6                   | 819       | 24.0 | 2591      | 76.0 |
| Masters & IBHE Certificate      | 2012 | 1485  | 571   | 38.5 | 914        | 61.5 | 821   | 55.3 | 660    | 44.4 | 4                   | 637       | 42.9 | 848       | 57.1 |
|                                 | 2013 | 1554  | 524   | 33.7 | 1030       | 66.3 | 852   | 54.8 | 695    | 44.7 | 7                   | 655       | 42.1 | 899       | 57.9 |
|                                 | 2014 | 1660  | 654   | 39.4 | 1006       | 60.6 | 895   | 53.9 | 758    | 45.7 | 7                   | 589       | 35.5 | 1071      | 64.5 |
|                                 | 2015 | 2128  | 893   | 42.0 | 1235       | 58.0 | 1222  | 57.4 | 896    | 42.1 | 10                  | 704       | 33.1 | 1424      | 66.9 |
|                                 | 2016 | 2146  | 704   | 32.8 | 1442       | 67.2 | 1233  | 57.5 | 908    | 42.3 | 5                   | 692       | 32.2 | 1454      | 67.8 |
| Doctorate                       | 2012 | 1262  | 228   | 18.1 | 1034       | 81.9 | 732   | 58.0 | 529    | 41.9 | 1                   | 134       | 10.6 | 1127      | 89.3 |
|                                 | 2013 | 1213  | 187   | 15.4 | 1026       | 84.6 | 701   | 57.8 | 512    | 42.2 | 0                   | 136       | 11.2 | 1077      | 88.8 |
|                                 | 2014 | 1201  | 196   | 16.3 | 1005       | 83.7 | 708   | 59.0 | 492    | 41.0 | 1                   | 137       | 11.4 | 1064      | 88.6 |
|                                 | 2015 | 1260  | 213   | 16.9 | 1047       | 83.1 | 757   | 60.1 | 501    | 39.8 | 2                   | 136       | 10.8 | 1124      | 89.2 |
|                                 | 2016 | 1264  | 193   | 15.3 | 1071       | 84.7 | 749   | 59.3 | 514    | 40.7 | 1                   | 127       | 10.0 | 1137      | 90.0 |
| Non-Degree & Campus Certificate | 2012 | 0     | 0     | 0.0  | 0          | 0.0  | 0     | 0.0  | 0      | 0.0  | 0                   | 0         | 0.0  | 0         | 0.0  |
|                                 | 2013 | 0     | 0     | 0.0  | 0          | 0.0  | 0     | 0.0  | 0      | 0.0  | 0                   | 0         | 0.0  | 0         | 0.0  |
|                                 | 2014 | 0     | 0     | 0.0  | 0          | 0.0  | 0     | 0.0  | 0      | 0.0  | 0                   | 0         | 0.0  | 0         | 0.0  |
|                                 | 2015 | 0     | 0     | 0.0  | 0          | 0.0  | 0     | 0.0  | 0      | 0.0  | 0                   | 0         | 0.0  | 0         | 0.0  |
|                                 | 2016 | 0     | 0     | 0.0  | 0          | 0.0  | 0     | 0.0  | 0      | 0.0  | 0                   | 0         | 0.0  | 0         | 0.0  |

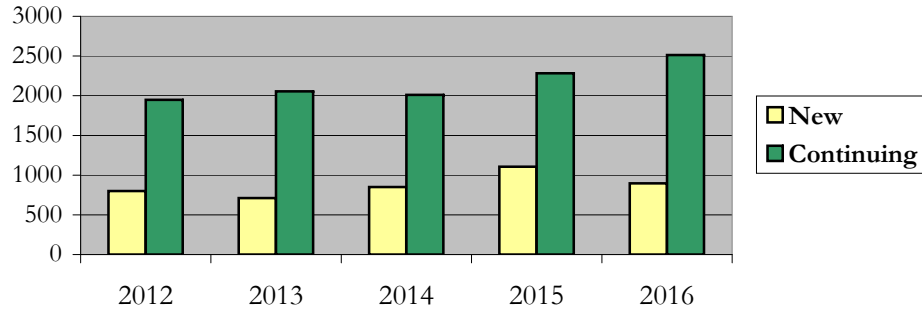
# Enrollment

## by Student Type, Enrollment Time, and Gender (All Students)

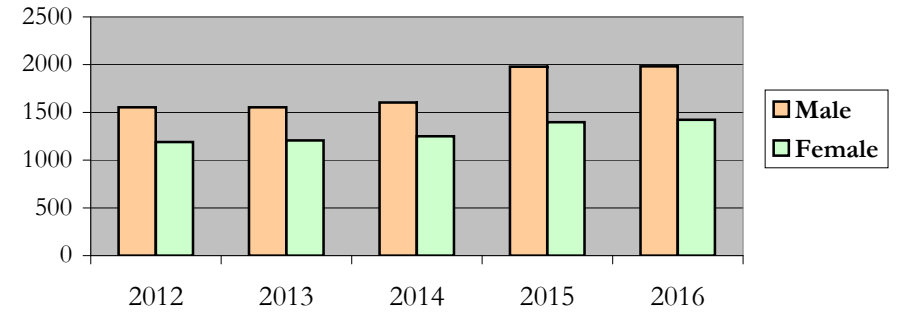
STEM

Fall 2012 - Fall 2016

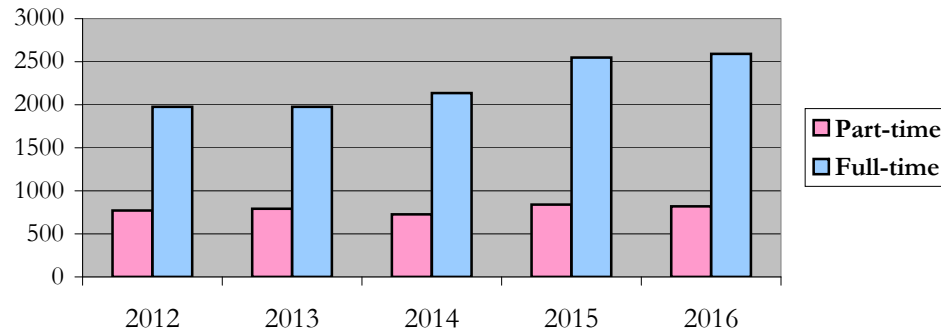
### New and Continuing Enrollment



### Enrollment by Gender



### Enrollment by Student Enrollment Time

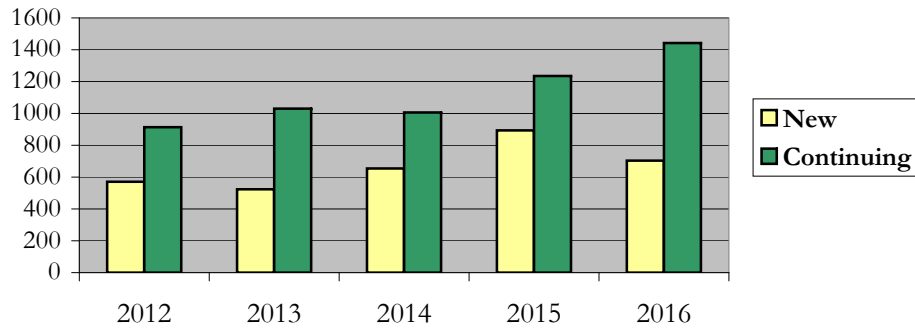


**Enrollment**  
**by Student Type, Enrollment Time, and Gender (Master's Students)**

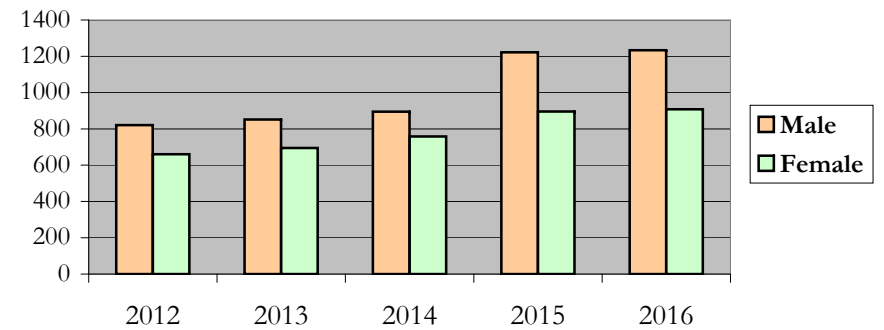
STEM

Fall 2012 - Fall 2016

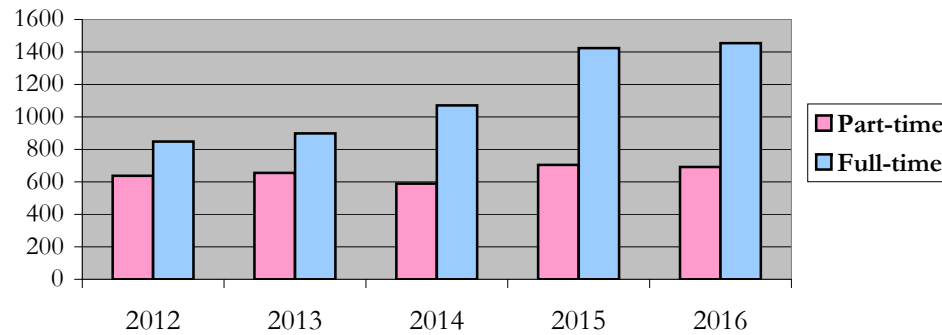
**New and Continuing Enrollment**



**Enrollment by Gender**



**Enrollment by Student Enrollment Time**

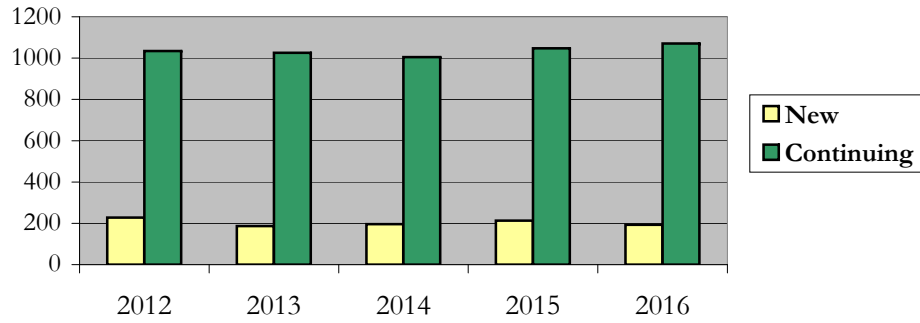


# Enrollment by Student Type, Enrollment Time, and Gender (Doctorate Students)

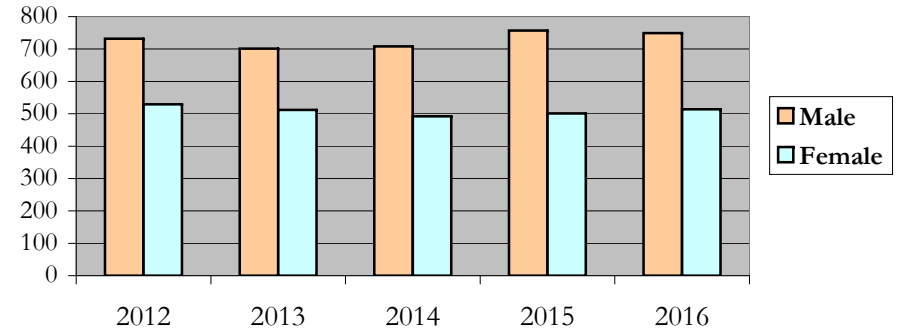
STEM

Fall 2012 - Fall 2016

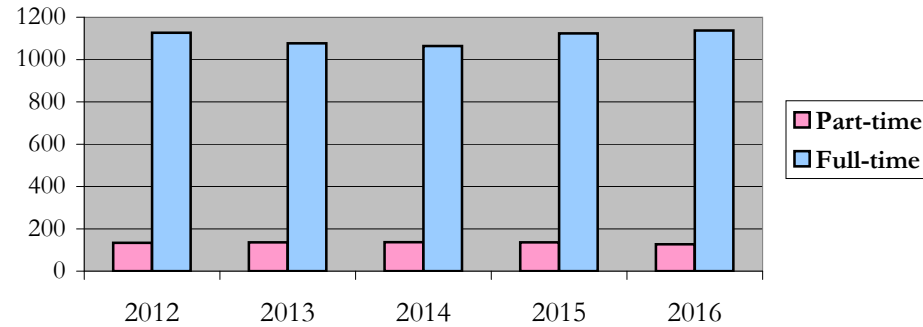
### New and Continuing Enrollment



### Enrollment by Gender



### Enrollment by Student Enrollment Time



# Degrees Conferred by Race/Ethnicity

STEM

Fall 2012 - Fall 2016

|                                 |           | Total | Under Represented Minorities (URM) |     |                           |     |                   |     |           |     | Asian | Native Hawaiian or Pacific Islander |   | White |     | Two or More Races |    | International |     | Not Reported |    |
|---------------------------------|-----------|-------|------------------------------------|-----|---------------------------|-----|-------------------|-----|-----------|-----|-------|-------------------------------------|---|-------|-----|-------------------|----|---------------|-----|--------------|----|
|                                 |           |       | American Indian or Alaska Native   |     | Black or African American |     | Hispanic / Latino |     | URM Total |     |       | Count                               | % | Count | %   | Count             | %  | Count         | %   | Count        | %  |
|                                 |           |       | Count                              | %   | Count                     | %   | Count             | %   | Count     | %   |       |                                     |   |       |     |                   |    |               |     |              |    |
| All                             | 2011 - 12 | 685   | 0                                  | 0.0 | 31                        | 4.5 | 31                | 4.5 | 62        | 9.1 | 68    | 9.9                                 | 1 | 0.1   | 271 | 39.6              | 2  | 0.3           | 268 | 39.1         | 13 |
|                                 | 2012 - 13 | 813   | 0                                  | 0.0 | 39                        | 4.8 | 30                | 3.7 | 69        | 8.5 | 66    | 8.1                                 | 1 | 0.1   | 310 | 38.1              | 9  | 1.1           | 340 | 41.8         | 18 |
|                                 | 2013 - 14 | 910   | 0                                  | 0.0 | 31                        | 3.4 | 27                | 3.0 | 58        | 6.4 | 81    | 8.9                                 | 1 | 0.1   | 315 | 34.6              | 15 | 1.6           | 420 | 46.2         | 20 |
|                                 | 2014 - 15 | 832   | 0                                  | 0.0 | 32                        | 3.8 | 28                | 3.4 | 60        | 7.2 | 71    | 8.5                                 | 0 | 0.0   | 268 | 32.2              | 7  | 0.8           | 411 | 49.4         | 15 |
|                                 | 2015 - 16 | 1014  | 1                                  | 0.1 | 26                        | 2.6 | 38                | 3.7 | 65        | 6.4 | 72    | 7.1                                 | 2 | 0.2   | 264 | 26.0              | 9  | 0.9           | 589 | 58.1         | 13 |
| Masters & IBHE Certificate      | 2011 - 12 | 499   | 0                                  | 0.0 | 24                        | 4.8 | 25                | 5.0 | 49        | 9.8 | 56    | 11.2                                | 1 | 0.2   | 205 | 41.1              | 2  | 0.4           | 174 | 34.9         | 12 |
|                                 | 2012 - 13 | 628   | 0                                  | 0.0 | 31                        | 4.9 | 22                | 3.5 | 53        | 8.4 | 56    | 8.9                                 | 1 | 0.2   | 245 | 39.0              | 9  | 1.4           | 250 | 39.8         | 14 |
|                                 | 2013 - 14 | 723   | 0                                  | 0.0 | 24                        | 3.3 | 20                | 2.8 | 44        | 6.1 | 70    | 9.7                                 | 1 | 0.1   | 255 | 35.3              | 13 | 1.8           | 321 | 44.4         | 19 |
|                                 | 2014 - 15 | 659   | 0                                  | 0.0 | 27                        | 4.1 | 22                | 3.3 | 49        | 7.4 | 60    | 9.1                                 | 0 | 0.0   | 202 | 30.7              | 6  | 0.9           | 328 | 49.8         | 14 |
|                                 | 2015 - 16 | 835   | 1                                  | 0.1 | 24                        | 2.9 | 32                | 3.8 | 57        | 6.8 | 61    | 7.3                                 | 2 | 0.2   | 201 | 24.1              | 8  | 1.0           | 495 | 59.3         | 11 |
| Doctorate                       | 2011 - 12 | 186   | 0                                  | 0.0 | 7                         | 3.8 | 6                 | 3.2 | 13        | 7.0 | 12    | 6.5                                 | 0 | 0.0   | 66  | 35.5              | 0  | 0.0           | 94  | 50.5         | 1  |
|                                 | 2012 - 13 | 185   | 0                                  | 0.0 | 8                         | 4.3 | 8                 | 4.3 | 16        | 8.6 | 10    | 5.4                                 | 0 | 0.0   | 65  | 35.1              | 0  | 0.0           | 90  | 48.6         | 4  |
|                                 | 2013 - 14 | 187   | 0                                  | 0.0 | 7                         | 3.7 | 7                 | 3.7 | 14        | 7.5 | 11    | 5.9                                 | 0 | 0.0   | 60  | 32.1              | 2  | 1.1           | 99  | 52.9         | 1  |
|                                 | 2014 - 15 | 173   | 0                                  | 0.0 | 5                         | 2.9 | 6                 | 3.5 | 11        | 6.4 | 11    | 6.4                                 | 0 | 0.0   | 66  | 38.2              | 1  | 0.6           | 83  | 48.0         | 1  |
|                                 | 2015 - 16 | 179   | 0                                  | 0.0 | 2                         | 1.1 | 6                 | 3.4 | 8         | 4.5 | 11    | 6.1                                 | 0 | 0.0   | 63  | 35.2              | 1  | 0.6           | 94  | 52.5         | 2  |
| Non-Degree & Campus Certificate | 2011 - 12 | 0     | 0                                  | 0.0 | 0                         | 0.0 | 0                 | 0.0 | 0         | 0.0 | 0     | 0.0                                 | 0 | 0.0   | 0   | 0.0               | 0  | 0.0           | 0   | 0.0          | 0  |
|                                 | 2012 - 13 | 0     | 0                                  | 0.0 | 0                         | 0.0 | 0                 | 0.0 | 0         | 0.0 | 0     | 0.0                                 | 0 | 0.0   | 0   | 0.0               | 0  | 0.0           | 0   | 0.0          | 0  |
|                                 | 2013 - 14 | 0     | 0                                  | 0.0 | 0                         | 0.0 | 0                 | 0.0 | 0         | 0.0 | 0     | 0.0                                 | 0 | 0.0   | 0   | 0.0               | 0  | 0.0           | 0   | 0.0          | 0  |
|                                 | 2014 - 15 | 0     | 0                                  | 0.0 | 0                         | 0.0 | 0                 | 0.0 | 0         | 0.0 | 0     | 0.0                                 | 0 | 0.0   | 0   | 0.0               | 0  | 0.0           | 0   | 0.0          | 0  |
|                                 | 2015 - 16 | 0     | 0                                  | 0.0 | 0                         | 0.0 | 0                 | 0.0 | 0         | 0.0 | 0     | 0.0                                 | 0 | 0.0   | 0   | 0.0               | 0  | 0.0           | 0   | 0.0          | 0  |

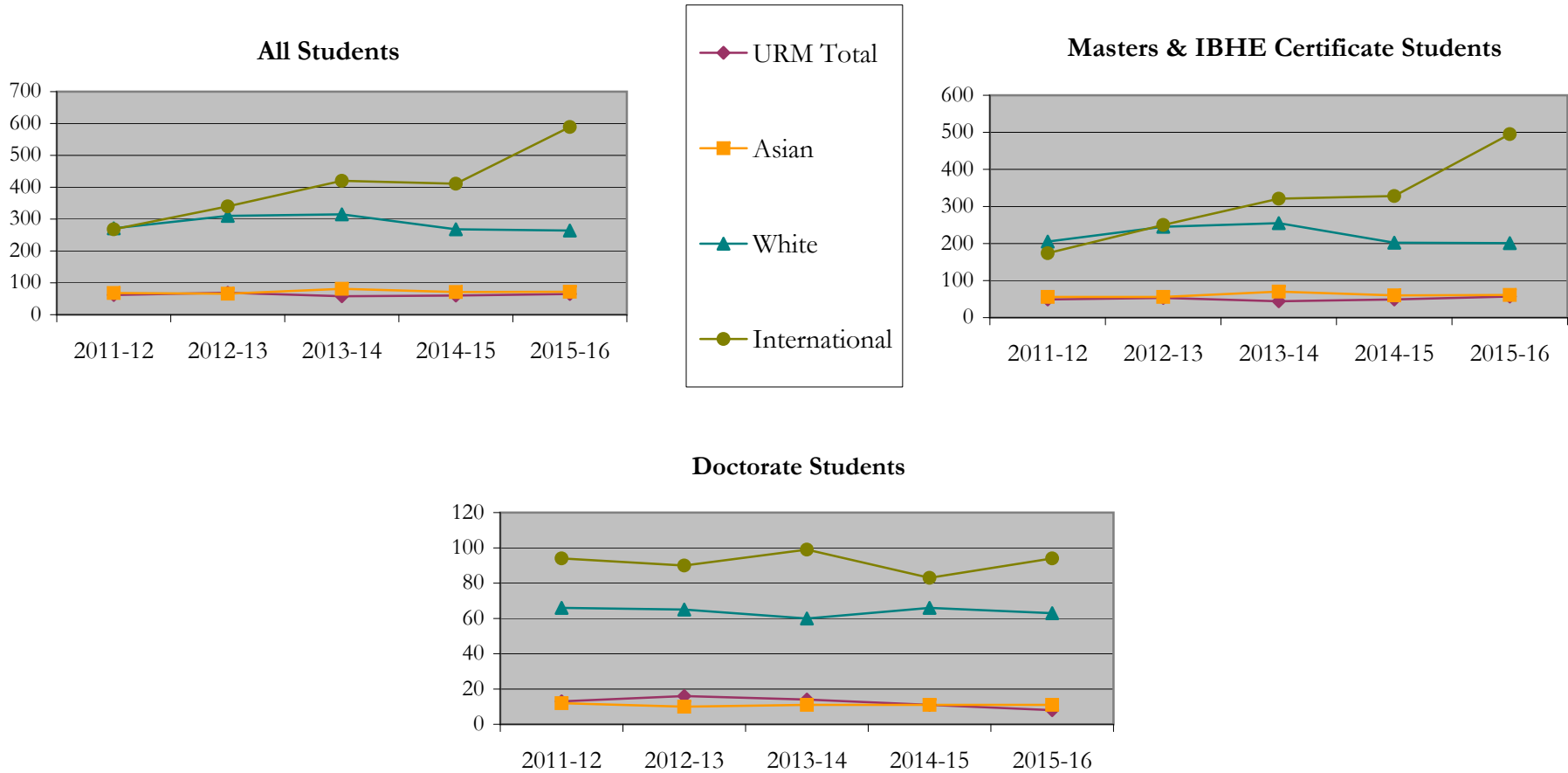
**Note:** Each row represents a fiscal year, beginning with Summer term and ending with Spring.



# Degrees Conferred by Race/Ethnicity

STEM

Fall 2012 - Fall 2016



**Notes:** 1) URM stands for Under-Represented Minority and includes American Indian or Alaska Native; Black or African-American; Hispanic / Latino race/ethnicity groups

2) Individual URM groups, Native Hawaiian Pacific Islander, Two or More Races, and Other race/ethnicity categories left off this charts due to relatively low numbers

## Degrees Conferred

### by Gender

STEM

Fall 2012 - Fall 2016

|                                  |           | Total | Male  |      | Female |      | Not Reported |
|----------------------------------|-----------|-------|-------|------|--------|------|--------------|
|                                  |           |       | Count | %    | Count  | %    |              |
| All                              | 2011 - 12 | 685   | 358   | 52.3 | 325    | 47.4 | 2            |
|                                  | 2012 - 13 | 813   | 436   | 53.6 | 376    | 46.2 | 1            |
|                                  | 2013 - 14 | 910   | 535   | 58.8 | 373    | 41.0 | 2            |
|                                  | 2014 - 15 | 832   | 480   | 57.7 | 348    | 41.8 | 4            |
|                                  | 2015 - 16 | 1014  | 610   | 60.2 | 402    | 39.6 | 2            |
| Masters &<br>IBHE<br>Certificate | 2011 - 12 | 499   | 251   | 50.3 | 246    | 49.3 | 2            |
|                                  | 2012 - 13 | 628   | 340   | 54.1 | 287    | 45.7 | 1            |
|                                  | 2013 - 14 | 723   | 433   | 59.9 | 288    | 39.8 | 2            |
|                                  | 2014 - 15 | 659   | 381   | 57.8 | 274    | 41.6 | 4            |
|                                  | 2015 - 16 | 835   | 501   | 60.0 | 332    | 39.8 | 2            |
| Doctorate                        | 2011 - 12 | 186   | 107   | 57.5 | 79     | 42.5 | 0            |
|                                  | 2012 - 13 | 185   | 96    | 51.9 | 89     | 48.1 | 0            |
|                                  | 2013 - 14 | 187   | 102   | 54.5 | 85     | 45.5 | 0            |
|                                  | 2014 - 15 | 173   | 99    | 57.2 | 74     | 42.8 | 0            |
|                                  | 2015 - 16 | 179   | 109   | 60.9 | 70     | 39.1 | 0            |
| Campus<br>Certificates           | 2011 - 12 | 0     | 0     | 0.0  | 0      | 0.0  | 0            |
|                                  | 2012 - 13 | 0     | 0     | 0.0  | 0      | 0.0  | 0            |
|                                  | 2013 - 14 | 0     | 0     | 0.0  | 0      | 0.0  | 0            |
|                                  | 2014 - 15 | 0     | 0     | 0.0  | 0      | 0.0  | 0            |
|                                  | 2015 - 16 | 0     | 0     | 0.0  | 0      | 0.0  | 0            |

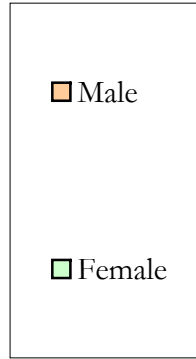
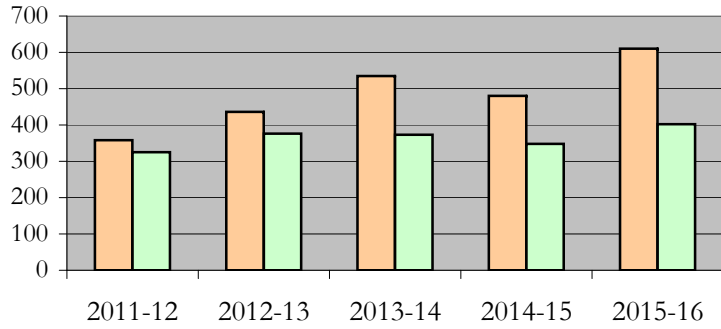
Note: Each row represents a fiscal year, beginning with Summer term and ending with Spring.

# Degrees Conferred by Gender

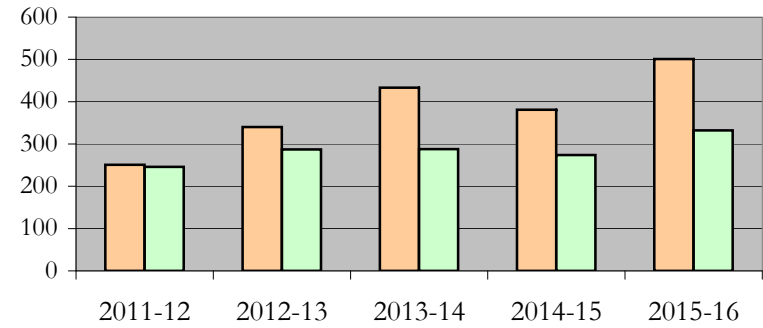
STEM

Fall 2012 - Fall 2016

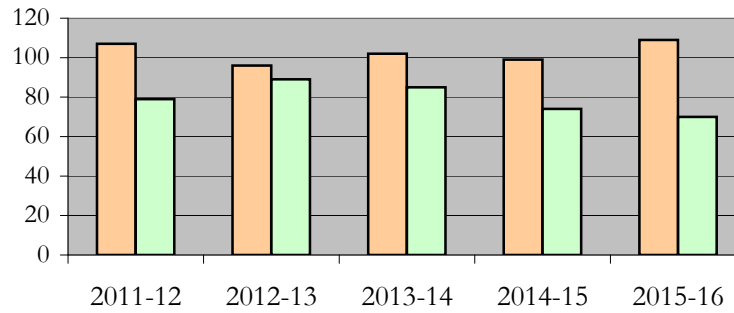
### All Students



### Masters & IBHE Certificate Students



### Doctorate Students



## Appendix A

### STEM

Fall 2012 - Fall 2016

#### List of program codes included in this document

|              |              |             |             |
|--------------|--------------|-------------|-------------|
| 20FQ1211MENU | 20FS1069MS   | 20FS1477PHD | 20FS4050PHD |
| 20FS0106MS   | 20FS1072MS   | 20FS1502MS  | 20FS5020MS7 |
| 20FS0106PHD  | 20FS1072PHD  | 20FS1502MS1 | 20FS5085MEE |
| 20FS0112MS   | 20FS1075MS   | 20FS1502MS5 | 20FS5173PHD |
| 20FS0112PHD  | 20FS1113MA   | 20FS1502MS6 | 20FS5207PHD |
| 20FS0127MS   | 20FS1174MS   | 20FS1502MS7 | 20FS5256MFA |
| 20FS0133MS   | 20FS1174PHD  | 20FS1506MS  | 20FS5286MS  |
| 20FS0133PHD  | 20FS1200MS   | 20FS1525MS  | 20FS5395MS  |
| 20FS0240MS   | 20FS1200PHD  | 20FS1525PHD | 20FS5416PHD |
| 20FS0240PHD  | 20FS1205MFA  | 20FS1563MS  | 20FS5503PHD |
| 20FS0290MST  | 20FS1211MENU | 20FS1563PHD | 20FS5512MS  |
| 20FS0300MS   | 20FS1257MFA  | 20FS1564MS  | 20FS5524MED |
| 20FS0300PHD  | 20FS1274MS   | 20FS1564PHD | 20FS5552MS  |
| 20FS0318MS   | 20FS1290PHD  | 20FS1584MS  | 20FS5552PHD |
| 20FS0323MS   | 20FS1303MS   | 20FS1584PHD | 20FS9890MS  |
| 20FS0323PHD  | 20FS1303MSU  | 20FS1634MS  | 20FS9890PHD |
| 20FS0335MS   | 20FS1326MS   | 20FS1634PHD | 20FS9953PHD |
| 20FS0335PHD  | 20FS1326PHD  | 20FS1637MS  | 20FY1634MPH |
| 20FS0351MS   | 20FS1338PHD  | 20FS1637PHD | 20FY1637MPH |
| 20FS0408MS   | 20FS1434MS   | 20FS1901DA  | 21FS0112MS  |
| 20FS0408PHD  | 20FS1434PHD  | 20FS1903MS  | 21FS0127MS  |
| 20FS0439MA   | 20FS1439MS   | 20FS1903PHD | 21FS0133MS  |
| 20FS0439MS   | 20FS1454MS   | 20FS1909MS  | 21FS1200MS  |
| 20FS0439PHD  | 20FS1454PHD  | 20FS1909PHD | 27FS9890MSU |
| 20FS1024MS   | 20FS1468MS   | 20FS3987MS  |             |
| 20FS1024PHD  | 20FS1468PHD  | 20FS3987PHD |             |

**Notes:** 1) Program codes are sorted by alphabetical order in column-wise fashion

2) Program codes highlighted in yellow did not have applications, enrollment, nor degrees conferred in the covered period