

**GRADUATE  
COLLEGE**



---

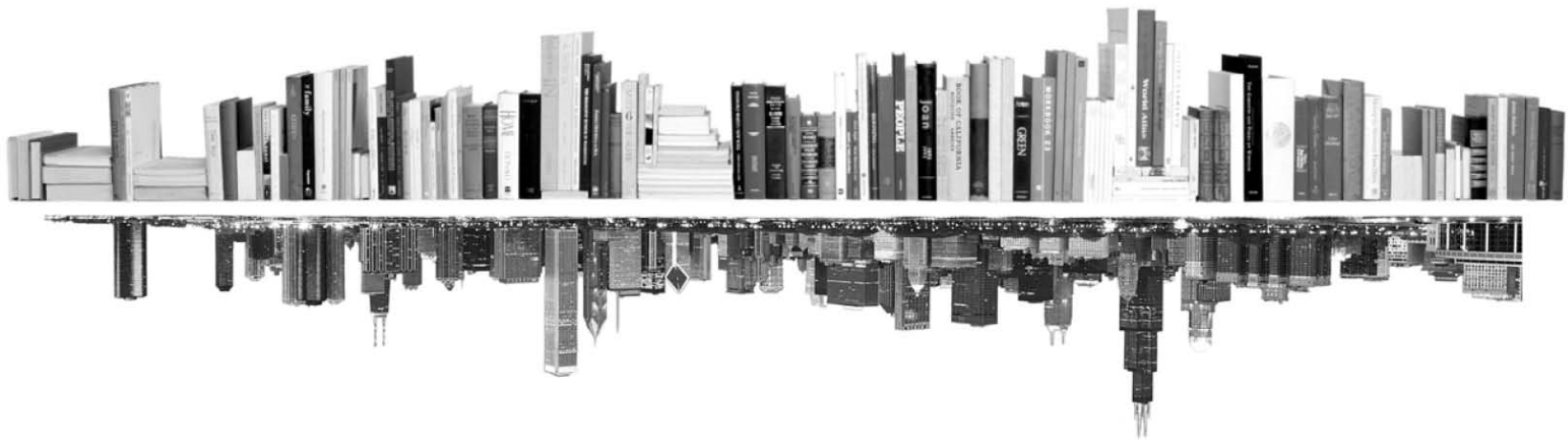
**ENROLLMENT MANAGEMENT REPORT**

**GRADUATE DIVISION PROFILE**

**LIFE SCIENCES**

**FALL 2017**

---





---

---

## INTRODUCTION – DIVISION PROFILE

---

---

The following profile report focuses on the Life Sciences graduate program division (as defined in the Graduate College by-laws).

This profile report tracks students, not enrollments. This means that students with dual enrollments are reported only once – under their first program.

Kevin Monahan  
Director of Graduate Program Review and Information Systems  
Graduate College, University of Illinois at Chicago  
Voice: 312.413.0410 Email: kmonahan@uic.edu

---

---

## TABLE OF CONTENTS

---

---

MATRICULATION	
Diversity Pipeline	1
APPLICATIONS	
by Race/Ethnicity	2 – 5
ENROLLMENT	
by Race/Ethnicity	6 – 9
by Type, Time, & Gender	10 – 13
DEGREES	
by Race/Ethnicity	14 – 15
by Gender	16 – 17
List of academic programs included in this report	Appendix A

# Matriculation

## Diversity Pipeline

Life Sciences

Fall 2013 - Fall 2017

	Fall Semester Year	Applied					Admitted				Non-URM Admitted to Applied Yield %	URM Admitted to Applied Yield %	New Enrollment				Non-URM Enrolled to Admitted Yield %	URM Enrolled to Admitted Yield %	Total Enrollment						
		Grand Total	Non-URM Total		URM Total		Grand Total	Non-URM Total		URM Total			Grand Total	Non-URM Total		URM Total			Grand Total	Non-URM Total		URM Total			
			Count	%	Count	%		Count	%	Count				%	Count	%				Count	%	Count	%	Count	%
All	2013	4144	3526	85.1%	618	14.9%	1585	1342	84.7%	243	15.3%	38.1%	39.3%	793	655	82.6%	138	17.4%	48.8%	56.8%	3014	2498	82.9%	516	17.1%
	2014	4138	3488	84.3%	650	15.7%	1435	1201	83.7%	234	16.3%	34.4%	36.0%	680	536	78.8%	144	21.2%	44.6%	61.5%	2908	2376	81.7%	532	18.3%
	2015	3525	2962	84.0%	563	16.0%	1379	1154	83.7%	225	16.3%	39.0%	40.0%	663	526	79.3%	137	20.7%	45.6%	60.9%	2781	2261	81.3%	520	18.7%
	2016	3416	2878	84.3%	538	15.7%	1413	1182	83.7%	231	16.3%	41.1%	42.9%	664	531	80.0%	133	20.0%	44.9%	57.6%	2554	2062	80.7%	492	19.3%
	2017	3313	2733	82.5%	580	17.5%	1367	1129	82.6%	238	17.4%	41.3%	41.0%	679	546	80.4%	133	19.6%	48.4%	55.9%	2396	1930	80.6%	466	19.4%
	Average	3707	3117	84.1%	590	15.9%	1436	1202	83.7%	234	16.3%	38.5%	39.7%	696	559	80.3%	137	19.7%	46.5%	58.5%	2731	2225	81.5%	505	18.5%
Masters & IBHE Certificate	2013	2585	2196	85.0%	389	15.0%	1324	1129	85.3%	195	14.7%	51.4%	50.1%	641	534	83.3%	107	16.7%	47.3%	54.9%	2163	1794	82.9%	369	17.1%
	2014	2533	2148	84.8%	385	15.2%	1170	987	84.4%	183	15.6%	45.9%	47.5%	525	410	78.1%	115	21.9%	41.5%	62.8%	2060	1682	81.7%	378	18.3%
	2015	2396	1995	83.3%	401	16.7%	1137	947	83.3%	190	16.7%	47.5%	47.4%	536	419	78.2%	117	21.8%	44.2%	61.6%	1941	1567	80.7%	374	19.3%
	2016	2412	2009	83.3%	403	16.7%	1180	982	83.2%	198	16.8%	48.9%	49.1%	526	412	78.3%	114	21.7%	42.0%	57.6%	1735	1380	79.5%	355	20.5%
	2017	2337	1912	81.8%	425	18.2%	1123	924	82.3%	199	17.7%	48.3%	46.8%	544	434	79.8%	110	20.2%	47.0%	55.3%	1618	1288	79.6%	330	20.4%
	Average	2453	2052	83.7%	401	16.3%	1187	994	83.7%	193	16.3%	48.4%	48.2%	554	442	79.7%	113	20.3%	44.5%	58.3%	1903	1542	81.0%	361	19.0%
Doctorate	2013	1488	1285	86.4%	203	13.6%	207	177	85.5%	30	14.5%	13.8%	14.8%	107	86	80.4%	21	19.6%	48.6%	70.0%	697	589	84.5%	108	15.5%
	2014	1536	1298	84.5%	238	15.5%	213	183	85.9%	30	14.1%	14.1%	12.6%	122	103	84.4%	19	15.6%	56.3%	63.3%	698	586	84.0%	112	16.0%
	2015	1076	932	86.6%	144	13.4%	204	183	89.7%	21	10.3%	19.6%	14.6%	106	91	85.8%	15	14.2%	49.7%	71.4%	713	603	84.6%	110	15.4%
	2016	954	834	87.4%	120	12.6%	196	174	88.8%	22	11.2%	20.9%	18.3%	112	98	87.5%	14	12.5%	56.3%	63.6%	703	595	84.6%	108	15.4%
	2017	935	797	85.2%	138	14.8%	213	185	86.9%	28	13.1%	23.2%	20.3%	110	95	86.4%	15	13.6%	51.4%	53.6%	687	575	83.7%	112	16.3%
	Average	1198	1029	85.9%	169	14.1%	207	180	87.3%	26	12.7%	17.5%	15.5%	111	95	84.9%	17	15.1%	52.4%	64.1%	700	590	84.3%	110	15.7%
Non-Degree & Campus Certificate	2013	71	45	63.4%	26	36.6%	54	36	66.7%	18	33.3%	80.0%	69.2%	45	35	77.8%	10	22.2%	97.2%	55.6%	154	115	74.7%	39	25.3%
	2014	69	42	60.9%	27	39.1%	52	31	59.6%	21	40.4%	73.8%	77.8%	33	23	69.7%	10	30.3%	74.2%	47.6%	150	108	72.0%	42	28.0%
	2015	53	35	66.0%	18	34.0%	38	24	63.2%	14	36.8%	68.6%	77.8%	21	16	76.2%	5	23.8%	66.7%	35.7%	127	91	71.7%	36	28.3%
	2016	50	35	70.0%	15	30.0%	37	26	70.3%	11	29.7%	74.3%	73.3%	26	21	80.8%	5	19.2%	80.8%	45.5%	116	87	75.0%	29	25.0%
	2017	41	24	58.5%	17	41.5%	31	20	64.5%	11	35.5%	83.3%	64.7%	25	17	68.0%	8	32.0%	85.0%	72.7%	91	67	73.6%	24	26.4%
	Average	57	36	63.7%	21	36.3%	42	27	64.6%	15	35.4%	75.7%	72.8%	30	22	74.7%	8	25.3%	81.8%	50.7%	128	94	73.4%	34	26.6%

**Note:** URM stands for Under-Represented Minority and includes American Indian or Alaska Native; Black or African-American; Hispanic / Latino race/ethnicity groups

**Applications - Total  
by Race/Ethnicity**

Life Sciences

Fall 2013 - Fall 2017

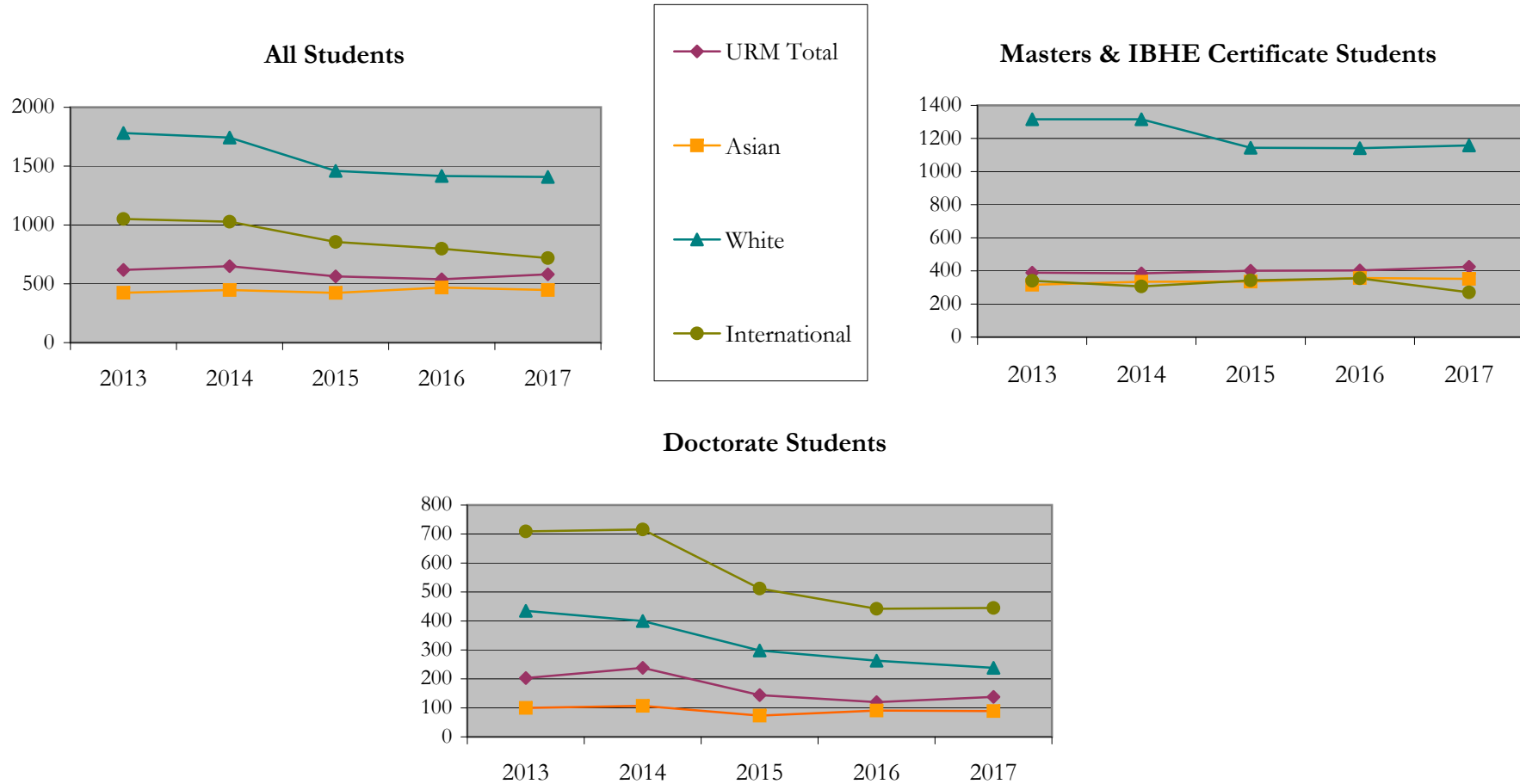
		Total	Under Represented Minorities (URM)																Not Reported		
			American Indian or Alaska Native		Black or African American		Hispanic / Latino		URM Total		Asian		Native Hawaiian or Pacific Islander		White		Two or More Races			International	
			Count	%	Count	%	Count	%	Count	%	Count	%	Count	%	Count	%	Count	%		Count	%
All	2013	4143	5	0.1	348	8.4	265	6.4	618	14.9	424	10.2	9	0.2	1781	43.0	83	2.0	1051	25.4	177
	2014	4140	4	0.1	381	9.2	265	6.4	650	15.7	447	10.8	3	0.1	1743	42.1	96	2.3	1027	24.8	174
	2015	3525	4	0.1	307	8.7	252	7.1	563	16.0	422	12.0	6	0.2	1459	41.4	92	2.6	856	24.3	127
	2016	3416	8	0.2	292	8.5	238	7.0	538	15.7	468	13.7	6	0.2	1416	41.5	82	2.4	798	23.4	108
	2017	3313	15	0.5	279	8.4	286	8.6	580	17.5	447	13.5	2	0.1	1408	42.5	82	2.5	718	21.7	76
Masters & IBHE Certificate	2013	2572	2	0.1	211	8.2	176	6.8	389	15.1	316	12.3	9	0.3	1316	51.2	57	2.2	340	13.2	145
	2014	2533	4	0.2	210	8.3	171	6.8	385	15.2	334	13.2	3	0.1	1316	52.0	55	2.2	306	12.1	134
	2015	2396	0	0.0	206	8.6	195	8.1	401	16.7	335	14.0	5	0.2	1144	47.7	66	2.8	343	14.3	102
	2016	2412	6	0.2	210	8.7	187	7.8	403	16.7	357	14.8	4	0.2	1141	47.3	66	2.7	355	14.7	86
	2017	2337	11	0.5	197	8.4	217	9.3	425	18.2	352	15.1	2	0.1	1158	49.6	69	3.0	270	11.6	61
Doctorate	2013	1500	3	0.2	117	7.8	83	5.5	203	13.5	100	6.7	0	0.0	435	29.0	22	1.5	709	47.3	31
	2014	1538	0	0.0	147	9.6	91	5.9	238	15.5	107	7.0	0	0.0	400	26.0	39	2.5	716	46.6	38
	2015	1076	4	0.4	88	8.2	52	4.8	144	13.4	73	6.8	1	0.1	298	27.7	23	2.1	512	47.6	25
	2016	954	2	0.2	70	7.3	48	5.0	120	12.6	91	9.5	2	0.2	263	27.6	14	1.5	442	46.3	22
	2017	935	2	0.2	71	7.6	65	7.0	138	14.8	89	9.5	0	0.0	238	25.5	12	1.3	445	47.6	13
Non-Degree & Campus Certificate	2013	71	0	0.0	20	28.2	6	8.5	26	36.6	8	11.3	0	0.0	30	42.3	4	5.6	2	2.8	1
	2014	69	0	0.0	24	34.8	3	4.3	27	39.1	6	8.7	0	0.0	27	39.1	2	2.9	5	7.2	2
	2015	53	0	0.0	13	24.5	5	9.4	18	34.0	14	26.4	0	0.0	17	32.1	3	5.7	1	1.9	0
	2016	50	0	0.0	12	24.0	3	6.0	15	30.0	20	40.0	0	0.0	12	24.0	2	4.0	1	2.0	0
	2017	41	2	4.9	11	26.8	4	9.8	17	41.5	6	14.6	0	0.0	12	29.3	1	2.4	3	7.3	2

**Note:** URM stands for Under-Represented Minority and includes American Indian or Alaska Native; Black or African-American; Hispanic / Latino race/ethnicity groups

# Applications - Total by Race/Ethnicity

Life Sciences

Fall 2013 - Fall 2017



**Notes:** 1) URM stands for Under-Represented Minority and includes American Indian or Alaska Native; Black or African-American; Hispanic / Latino race/ethnicity groups

2) Individual URM groups, Native Hawaiian Pacific Islander, Two or More Races, and Other race/ethnicity categories left off this charts due to relatively low numbers

# Applications - Admitted

## by Race/Ethnicity

Life Sciences

Fall 2013 - Fall 2017

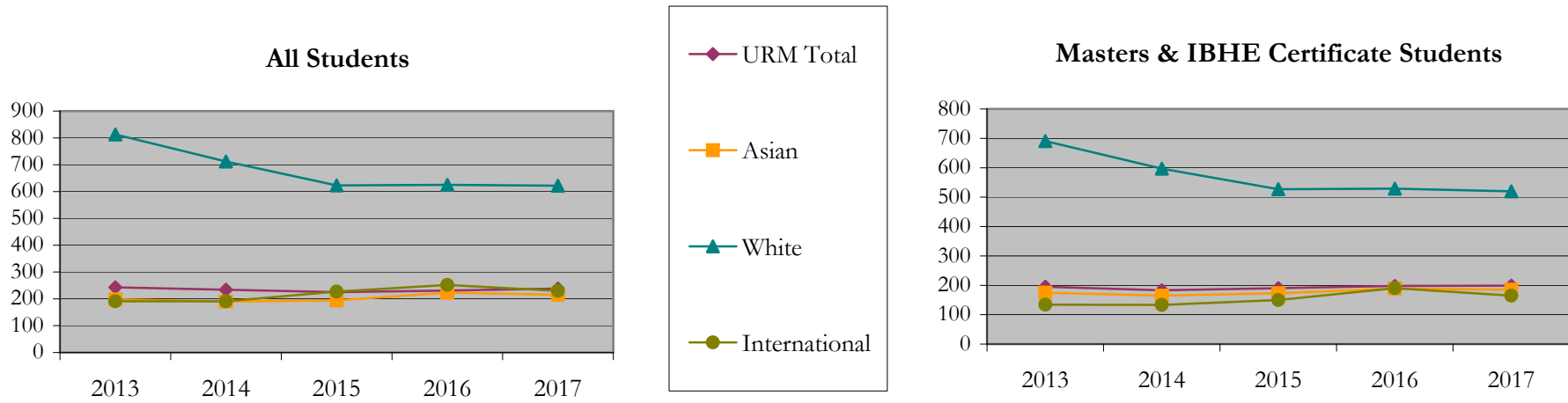
		Total	Under Represented Minorities (URM)										Asian		Native Hawaiian or Pacific Islander		White		Two or More Races		International		Not Reported
			American Indian or Alaska Native		Black or African American		Hispanic / Latino		URM Total		Count	%	Count	%	Count	%	Count	%	Count	%	Count	%	
			Count	%	Count	%	Count	%	Count	%													
All	2013	1585	0	0.0	135	8.5	108	6.8	243	15.3	198	12.5	5	0.3	813	51.3	38	2.4	191	12.1	97		
	2014	1435	2	0.1	124	8.6	108	7.5	234	16.3	190	13.2	1	0.1	712	49.6	37	2.6	191	13.3	70		
	2015	1379	1	0.1	119	8.6	105	7.6	225	16.3	194	14.1	1	0.1	623	45.2	46	3.3	227	16.5	63		
	2016	1413	3	0.2	120	8.5	108	7.6	231	16.3	223	15.8	2	0.1	625	44.2	35	2.5	252	17.8	45		
	2017	1367	9	0.7	117	8.6	112	8.2	238	17.4	215	15.7	1	0.1	622	45.5	36	2.6	230	16.8	25		
Masters & IBHE Certificate	2013	1324	0	0.0	107	8.1	88	6.6	195	14.7	175	13.2	5	0.4	691	52.2	31	2.3	134	10.1	93		
	2014	1170	2	0.2	90	7.7	91	7.8	183	15.6	165	14.1	1	0.1	597	51.0	29	2.5	133	11.4	62		
	2015	1137	0	0.0	97	8.5	93	8.2	190	16.7	173	15.2	1	0.1	527	46.4	36	3.2	150	13.2	60		
	2016	1180	3	0.3	101	8.6	94	8.0	198	16.8	189	16.0	2	0.2	529	44.8	30	2.5	190	16.1	42		
	2017	1123	8	0.7	98	8.7	93	8.3	199	17.7	185	16.5	1	0.1	520	46.3	32	2.8	165	14.7	21		
Doctorate	2013	207	0	0.0	13	6.3	17	8.2	30	14.5	18	8.7	0	0.0	98	47.3	3	1.4	55	26.6	3		
	2014	213	0	0.0	15	7.0	15	7.0	30	14.1	20	9.4	0	0.0	94	44.1	6	2.8	56	26.3	7		
	2015	204	1	0.5	12	5.9	8	3.9	21	10.3	12	5.9	0	0.0	83	40.7	9	4.4	76	37.3	3		
	2016	196	0	0.0	10	5.1	12	6.1	22	11.2	21	10.7	0	0.0	85	43.4	4	2.0	61	31.1	3		
	2017	213	0	0.0	11	5.2	17	8.0	28	13.1	25	11.7	0	0.0	92	43.2	3	1.4	62	29.1	3		
Non-Degree & Campus Certificate	2013	54	0	0.0	15	27.8	3	5.6	18	33.3	5	9.3	0	0.0	24	44.4	4	7.4	2	3.7	1		
	2014	52	0	0.0	19	36.5	2	3.8	21	40.4	5	9.6	0	0.0	21	40.4	2	3.8	2	3.8	1		
	2015	38	0	0.0	10	26.3	4	10.5	14	36.8	9	23.7	0	0.0	13	34.2	1	2.6	1	2.6	0		
	2016	37	0	0.0	9	24.3	2	5.4	11	29.7	13	35.1	0	0.0	11	29.7	1	2.7	1	2.7	0		
	2017	31	1	3.2	8	25.8	2	6.5	11	35.5	5	16.1	0	0.0	10	32.3	1	3.2	3	9.7	1		

**Note:** URM stands for Under-Represented Minority and includes American Indian or Alaska Native; Black or African-American; Hispanic / Latino race/ethnicity groups

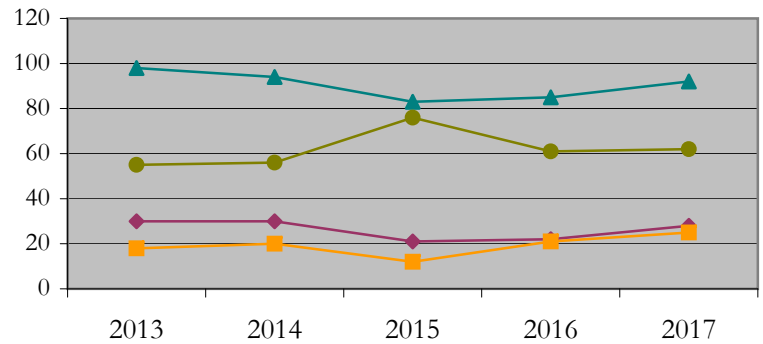
# Applications - Admitted by Race/Ethnicity

Life Sciences

Fall 2013 - Fall 2017



## Doctorate Students



**Notes:** 1) URM stands for Under-Represented Minority and includes American Indian or Alaska Native; Black or African-American; Hispanic / Latino race/ethnicity groups

2) Individual URM groups, Native Hawaiian Pacific Islander, Two or More Races, and Other race/ethnicity categories left off this charts due to relatively low numbers

**Enrollment - New  
by Race/Ethnicity**

Life Sciences

Fall 2013 - Fall 2017

		Total	Under Represented Minorities (URM)								Asian		Native Hawaiian or Pacific Islander		White		Two or More Races		International		Not Reported
			American Indian or Alaska Native		Black or African American		Hispanic / Latino		URM Total												
			Count	%	Count	%	Count	%	Count	%											
All	2013	793	0	0.0	68	8.6	70	8.8	138	17.4	95	12.0	6	0.8	430	54.2	23	2.9	80	10.1	21
	2014	680	1	0.1	84	12.4	59	8.7	144	21.2	87	12.8	0	0.0	340	50.0	12	1.8	77	11.3	20
	2015	663	1	0.2	73	11.0	63	9.5	137	20.7	94	14.2	0	0.0	300	45.2	21	3.2	84	12.7	27
	2016	664	3	0.5	66	9.9	64	9.6	133	20.0	110	16.6	2	0.3	302	45.5	13	2.0	94	14.2	10
	2017	679	5	0.7	67	9.9	61	9.0	133	19.6	106	15.6	0	0.0	319	47.0	21	3.1	92	13.5	8
Masters & IBHE Certificate	2013	641	0	0.0	51	8.0	56	8.7	107	16.7	83	12.9	6	0.9	357	55.7	18	2.8	50	7.8	20
	2014	525	1	0.2	64	12.2	50	9.5	115	21.9	71	13.5	0	0.0	272	51.8	8	1.5	44	8.4	15
	2015	536	0	0.0	61	11.4	56	10.4	117	21.8	82	15.3	0	0.0	245	45.7	15	2.8	50	9.3	27
	2016	526	3	0.6	55	10.5	56	10.6	114	21.7	84	16.0	2	0.4	249	47.3	9	1.7	59	11.2	9
	2017	544	4	0.7	53	9.7	53	9.7	110	20.2	91	16.7	0	0.0	262	48.2	18	3.3	58	10.7	5
Doctorate	2013	107	0	0.0	10	9.3	11	10.3	21	19.6	6	5.6	0	0.0	51	47.7	2	1.9	27	25.2	0
	2014	122	0	0.0	11	9.0	8	6.6	19	15.6	11	9.0	0	0.0	53	43.4	4	3.3	31	25.4	4
	2015	106	1	0.9	8	7.5	6	5.7	15	14.2	4	3.8	0	0.0	48	45.3	5	4.7	34	32.1	0
	2016	112	0	0.0	6	5.4	8	7.1	14	12.5	14	12.5	0	0.0	46	41.1	3	2.7	34	30.4	1
	2017	110	0	0.0	9	8.2	6	5.5	15	13.6	10	9.1	0	0.0	49	44.5	2	1.8	31	28.2	3
Non-Degree & Campus Certificate	2013	45	0	0.0	7	15.6	3	6.7	10	22.2	6	13.3	0	0.0	22	48.9	3	6.7	3	6.7	1
	2014	33	0	0.0	9	27.3	1	3.0	10	30.3	5	15.2	0	0.0	15	45.5	0	0.0	2	6.1	1
	2015	21	0	0.0	4	19.0	1	4.8	5	23.8	8	38.1	0	0.0	7	33.3	1	4.8	0	0.0	0
	2016	26	0	0.0	5	19.2	0	0.0	5	19.2	12	46.2	0	0.0	7	26.9	1	3.8	1	3.8	0
	2017	25	1	4.0	5	20.0	2	8.0	8	32.0	5	20.0	0	0.0	8	32.0	1	4.0	3	12.0	0

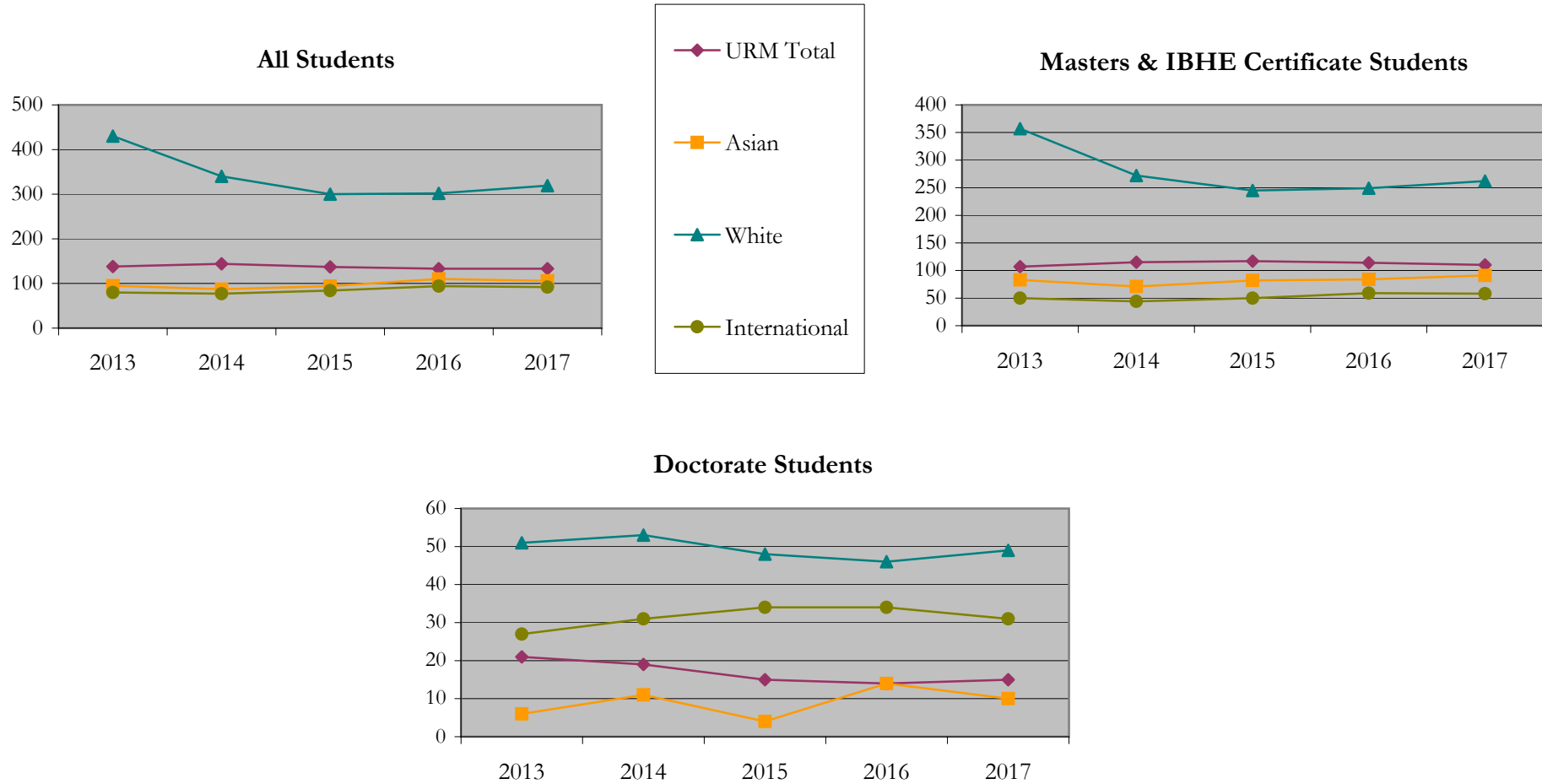
**Note:** URM stands for Under-Represented Minority and includes American Indian or Alaska Native; Black or African-American; Hispanic / Latino race/ethnicity groups



# Enrollment - New by Race/Ethnicity

Life Sciences

Fall 2013 - Fall 2017



**Notes:** 1) URM stands for Under-Represented Minority and includes American Indian or Alaska Native; Black or African-American; Hispanic / Latino race/ethnicity groups

2) Individual URM groups, Native Hawaiian Pacific Islander, Two or More Races, and Other race/ethnicity categories left off this charts due to relatively low numbers

**Enrollment - Total  
by Race/Ethnicity**

Life Sciences

Fall 2013 - Fall 2017

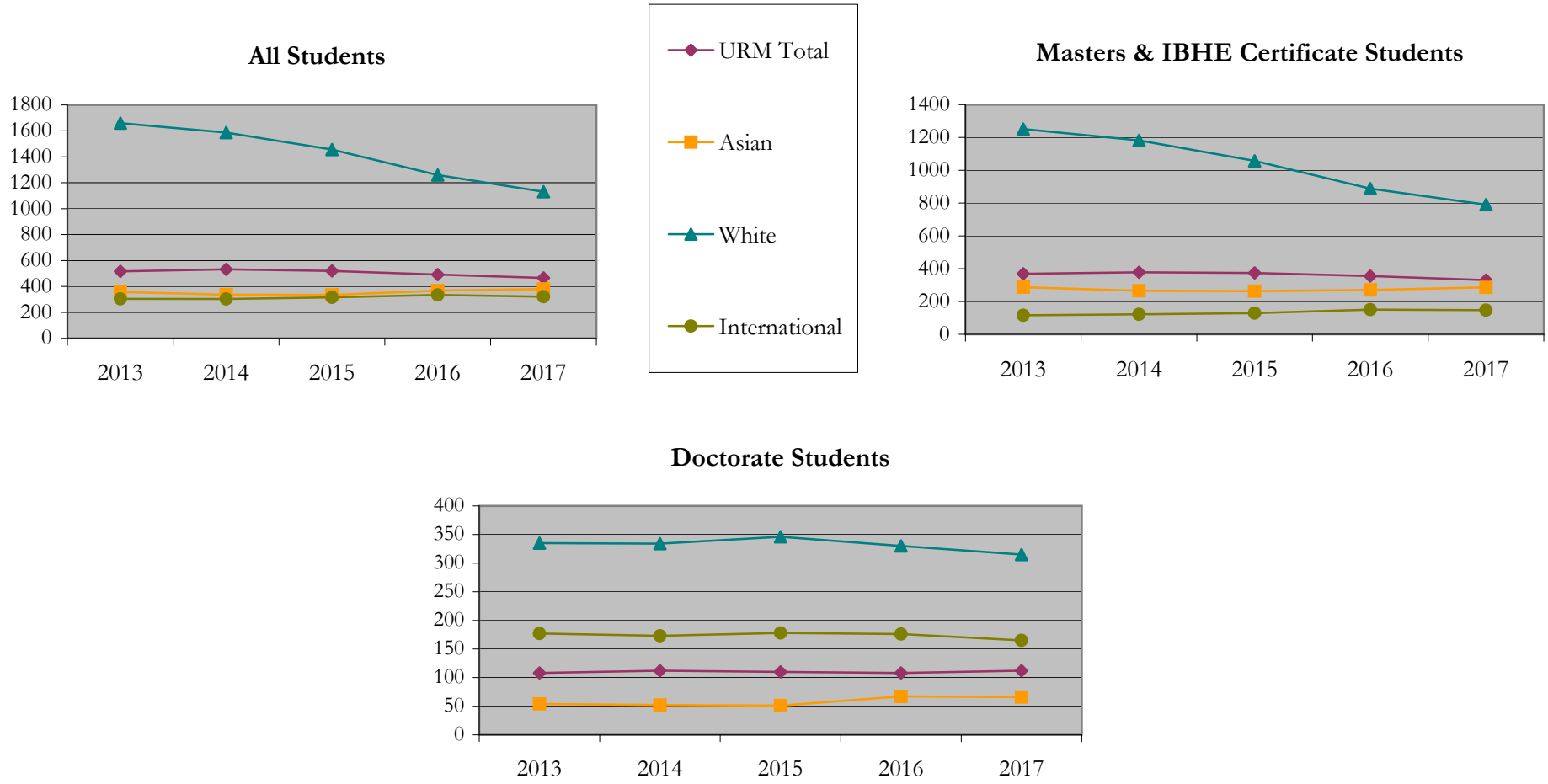
		Total	Under Represented Minorities (URM)								Asian		Native Hawaiian or Pacific Islander		White		Two or More Races		International		Not Reported
			American Indian or Alaska Native		Black or African American		Hispanic / Latino		URM Total												
			Count	%	Count	%	Count	%	Count	%											
All	2013	3014	2	0.1	287	9.5	227	7.5	516	17.1	358	11.9	12	0.4	1660	55.1	67	2.2	305	10.1	96
	2014	2908	2	0.1	299	10.3	231	7.9	532	18.3	337	11.6	6	0.2	1587	54.6	53	1.8	303	10.4	90
	2015	2781	2	0.1	285	10.2	233	8.4	520	18.7	335	12.0	4	0.1	1456	52.4	67	2.4	316	11.4	83
	2016	2554	5	0.2	260	10.2	227	8.9	492	19.3	368	14.4	2	0.1	1260	49.3	60	2.3	335	13.1	37
	2017	2396	8	0.3	243	10.1	215	9.0	466	19.4	380	15.9	1	0.0	1131	47.2	68	2.8	321	13.4	29
Masters & IBHE Certificate	2013	2163	2	0.1	209	9.7	158	7.3	369	17.1	287	13.3	12	0.6	1251	57.8	50	2.3	116	5.4	78
	2014	2060	2	0.1	211	10.2	165	8.0	378	18.3	265	12.9	6	0.3	1182	57.4	36	1.7	122	5.9	71
	2015	1941	1	0.1	201	10.4	172	8.9	374	19.3	263	13.5	4	0.2	1057	54.5	44	2.3	129	6.6	70
	2016	1735	3	0.2	183	10.5	169	9.7	355	20.5	270	15.6	2	0.1	888	51.2	37	2.1	150	8.6	33
	2017	1618	5	0.3	170	10.5	155	9.6	330	20.4	286	17.7	0	0.0	790	48.8	44	2.7	147	9.1	21
Doctorate	2013	697	0	0.0	49	7.0	59	8.5	108	15.5	54	7.7	0	0.0	335	48.1	14	2.0	177	25.4	9
	2014	698	0	0.0	56	8.0	56	8.0	112	16.0	52	7.4	0	0.0	334	47.9	16	2.3	173	24.8	11
	2015	713	1	0.1	59	8.3	50	7.0	110	15.4	51	7.2	0	0.0	346	48.5	20	2.8	178	25.0	8
	2016	703	2	0.3	56	8.0	50	7.1	108	15.4	67	9.5	0	0.0	330	46.9	19	2.7	176	25.0	3
	2017	687	2	0.3	57	8.3	53	7.7	112	16.3	66	9.6	1	0.1	315	45.9	20	2.9	165	24.0	8
Non-Degree & Campus Certificate	2013	154	0	0.0	29	18.8	10	6.5	39	25.3	17	11.0	0	0.0	74	48.1	3	1.9	12	7.8	9
	2014	150	0	0.0	32	21.3	10	6.7	42	28.0	20	13.3	0	0.0	71	47.3	1	0.7	8	5.3	8
	2015	127	0	0.0	25	19.7	11	8.7	36	28.3	21	16.5	0	0.0	53	41.7	3	2.4	9	7.1	5
	2016	116	0	0.0	21	18.1	8	6.9	29	25.0	31	26.7	0	0.0	42	36.2	4	3.4	9	7.8	1
	2017	91	1	1.1	16	17.6	7	7.7	24	26.4	28	30.8	0	0.0	26	28.6	4	4.4	9	9.9	0

**Note:** URM stands for Under-Represented Minority and includes American Indian or Alaska Native; Black or African-American; Hispanic / Latino race/ethnicity groups

# Enrollment - Total by Race/Ethnicity

Life Sciences

Fall 2013 - Fall 2017



**Notes:** 1) URM stands for Under-Represented Minority and includes American Indian or Alaska Native; Black or African-American; Hispanic / Latino race/ethnicity groups

2) Individual URM groups, Native Hawaiian Pacific Islander, Two or More Races, and Other race/ethnicity categories left off this charts due to relatively low numbers

## Enrollment

### by Student Type, Enrollment Time, and Gender

Life Sciences

Fall 2013 - Fall 2017

		Total	New		Continuing		Male		Female		Gender Not Reported	Part-time		Full-time	
			Count	%	Count	%	Count	%	Count	%		Count	%	Count	%
All	2013	3014	793	26.3	2221	73.7	746	24.8	2254	74.8	14	1391	46.2	1623	53.8
	2014	2908	680	23.4	2228	76.6	722	24.8	2169	74.6	17	1249	43.0	1659	57.0
	2015	2781	663	23.8	2118	76.2	724	26.0	2040	73.4	17	1179	42.4	1602	57.6
	2016	2554	664	26.0	1890	74.0	707	27.7	1833	71.8	14	969	37.9	1585	62.1
	2017	2396	679	28.3	1717	71.7	664	27.7	1723	71.9	9	851	35.5	1545	64.5
Masters & IBHE Certificate	2013	2163	641	29.6	1522	70.4	455	21.0	1695	78.4	13	1126	52.1	1037	47.9
	2014	2060	525	25.5	1535	74.5	433	21.0	1611	78.2	16	983	47.7	1077	52.3
	2015	1941	536	27.6	1405	72.4	441	22.7	1486	76.6	14	928	47.8	1013	52.2
	2016	1735	526	30.3	1209	69.7	424	24.4	1300	74.9	11	746	43.0	989	57.0
	2017	1618	544	33.6	1074	66.4	396	24.5	1216	75.2	6	639	39.5	979	60.5
Doctorate	2013	697	107	15.4	590	84.6	248	35.6	449	64.4	0	175	25.1	522	74.9
	2014	698	122	17.5	576	82.5	247	35.4	451	64.6	0	181	25.9	517	74.1
	2015	713	106	14.9	607	85.1	241	33.8	470	65.9	2	198	27.8	515	72.2
	2016	703	112	15.9	591	84.1	240	34.1	461	65.6	2	170	24.2	533	75.8
	2017	687	110	16.0	577	84.0	232	33.8	452	65.8	3	183	26.6	504	73.4
Non-Degree & Campus Certificate	2013	154	45	29.2	109	70.8	43	27.9	110	71.4	1	90	58.4	64	41.6
	2014	150	33	22.0	117	78.0	42	28.0	107	71.3	1	85	56.7	65	43.3
	2015	127	21	16.5	106	83.5	42	33.1	84	66.1	1	53	41.7	74	58.3
	2016	116	26	22.4	90	77.6	43	37.1	72	62.1	1	53	45.7	63	54.3
	2017	91	25	27.5	66	72.5	36	39.6	55	60.4	0	29	31.9	62	68.1

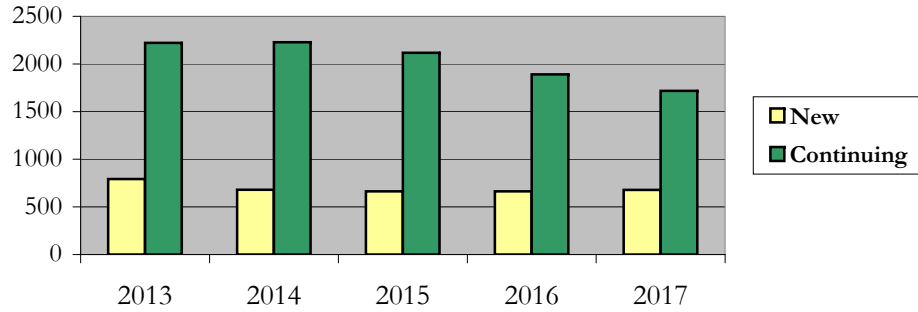
# Enrollment

## by Student Type, Enrollment Time, and Gender (All Students)

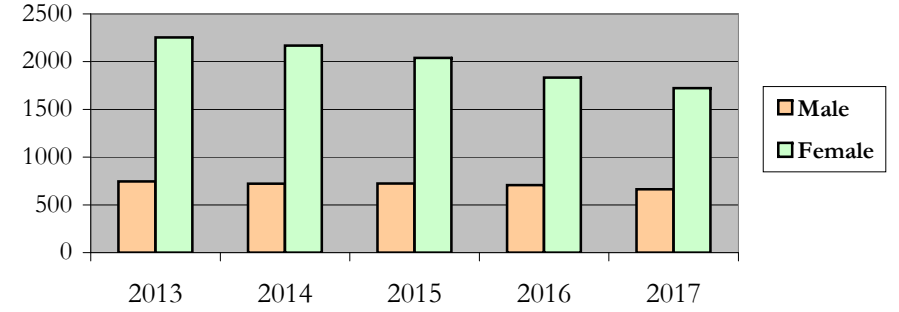
Life Sciences

Fall 2013 - Fall 2017

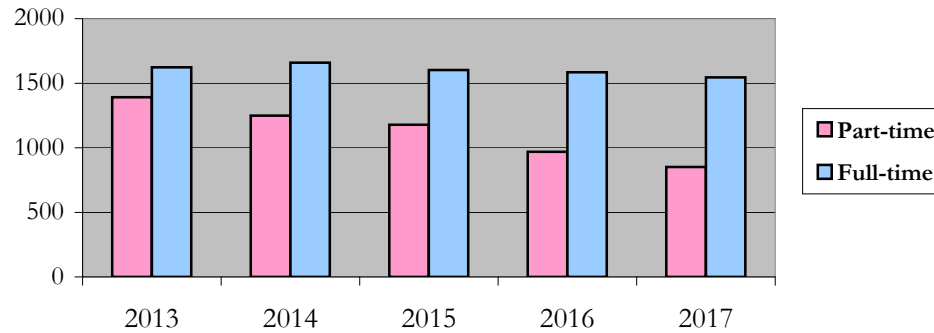
### New and Continuing Enrollment



### Enrollment by Gender



### Enrollment by Student Enrollment Time

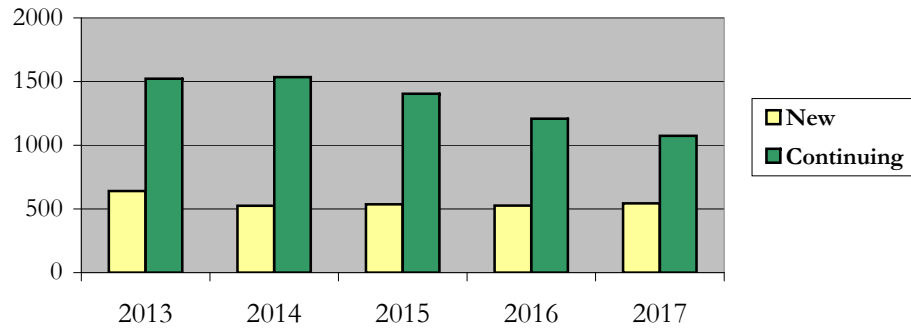


# Enrollment by Student Type, Enrollment Time, and Gender (Master's Students)

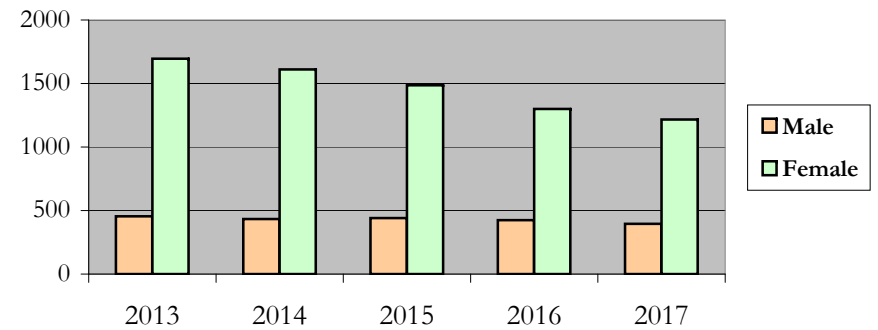
Life Sciences

Fall 2013 - Fall 2017

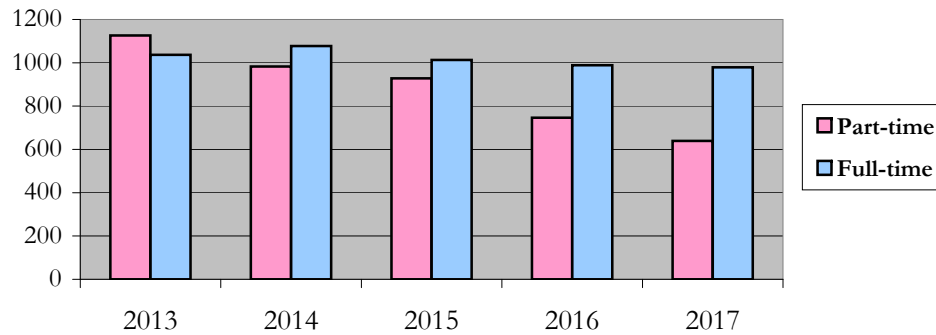
### New and Continuing Enrollment



### Enrollment by Gender



### Enrollment by Student Enrollment Time



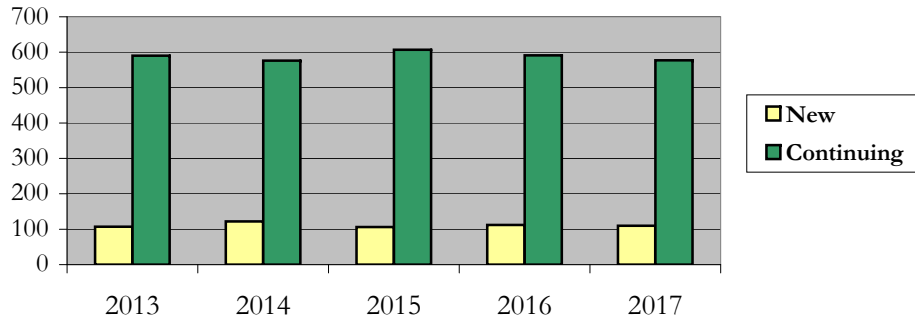
# Enrollment

## by Student Type, Enrollment Time, and Gender (Doctorate Students)

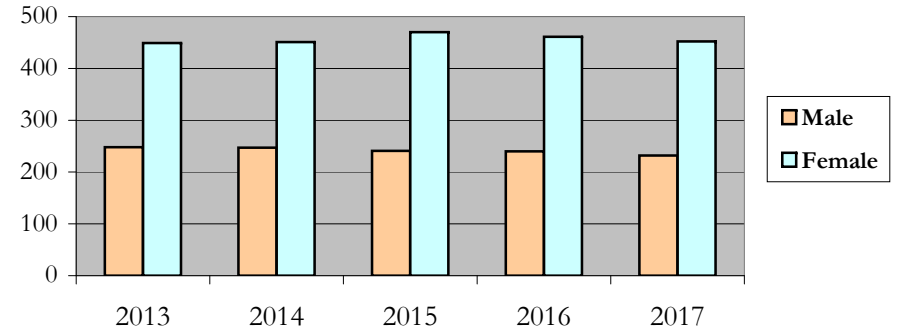
Life Sciences

Fall 2013 - Fall 2017

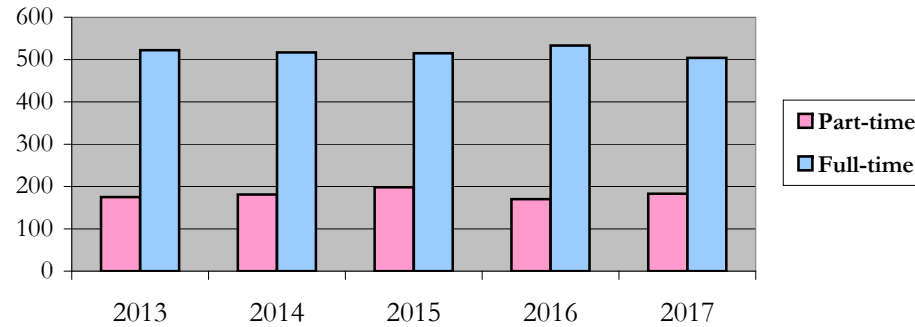
### New and Continuing Enrollment



### Enrollment by Gender



### Enrollment by Student Enrollment Time



# Degrees Conferred by Race/Ethnicity

Life Sciences

Fall 2013 - Fall 2017

		Total	Under Represented Minorities (URM)								Asian	Native Hawaiian or Pacific Islander		White		Two or More Races		International		Not Reported		
			American Indian or Alaska Native		Black or African American		Hispanic / Latino		URM Total			Count	%	Count	%	Count	%	Count	%		Count	%
			Count	%	Count	%	Count	%	Count	%												
All	2012 - 13	868	1	0.1	68	7.8	42	4.8	111	12.8	85	9.8	2	0.2	557	64.2	12	1.4	76	8.8	25	
	2013 - 14	844	0	0.0	80	9.5	50	5.9	130	15.4	99	11.7	4	0.5	481	57.0	18	2.1	81	9.6	31	
	2014 - 15	822	1	0.1	68	8.3	59	7.2	128	15.6	95	11.6	0	0.0	482	58.6	15	1.8	75	9.1	27	
	2015 - 16	796	1	0.1	61	7.7	66	8.3	128	16.1	92	11.6	4	0.5	447	56.2	21	2.6	76	9.5	28	
	2016 - 17	827	2	0.2	80	9.7	64	7.7	146	17.7	115	13.9	0	0.0	445	53.8	14	1.7	90	10.9	17	
Masters & IBHE Certificate	2012 - 13	706	1	0.1	57	8.1	34	4.8	92	13.0	71	10.1	2	0.3	472	66.9	12	1.7	36	5.1	21	
	2013 - 14	701	0	0.0	66	9.4	39	5.6	105	15.0	88	12.6	4	0.6	415	59.2	16	2.3	46	6.6	27	
	2014 - 15	694	1	0.1	58	8.4	49	7.1	108	15.6	83	12.0	0	0.0	413	59.5	15	2.2	51	7.3	24	
	2015 - 16	660	1	0.2	53	8.0	56	8.5	110	16.7	76	11.5	4	0.6	387	58.6	18	2.7	42	6.4	23	
	2016 - 17	683	2	0.3	68	10.0	55	8.1	125	18.3	104	15.2	0	0.0	369	54.0	9	1.3	61	8.9	15	
Doctorate	2012 - 13	124	0	0.0	9	7.3	7	5.6	16	12.9	8	6.5	0	0.0	59	47.6	0	0.0	39	31.5	2	
	2013 - 14	94	0	0.0	7	7.4	10	10.6	17	18.1	5	5.3	0	0.0	38	40.4	2	2.1	30	31.9	2	
	2014 - 15	91	0	0.0	5	5.5	9	9.9	14	15.4	7	7.7	0	0.0	49	53.8	0	0.0	20	22.0	1	
	2015 - 16	93	0	0.0	1	1.1	7	7.5	8	8.6	8	8.6	0	0.0	41	44.1	2	2.2	32	34.4	2	
	2016 - 17	106	0	0.0	6	5.7	7	6.6	13	12.3	6	5.7	0	0.0	54	50.9	4	3.8	28	26.4	1	
Non-Degree & Campus Certificate	2012 - 13	38	0	0.0	2	5.3	1	2.6	3	7.9	6	15.8	0	0.0	26	68.4	0	0.0	1	2.6	2	
	2013 - 14	49	0	0.0	7	14.3	1	2.0	8	16.3	6	12.2	0	0.0	28	57.1	0	0.0	5	10.2	2	
	2014 - 15	37	0	0.0	5	13.5	1	2.7	6	16.2	5	13.5	0	0.0	20	54.1	0	0.0	4	10.8	2	
	2015 - 16	43	0	0.0	7	16.3	3	7.0	10	23.3	8	18.6	0	0.0	19	44.2	1	2.3	2	4.7	3	
	2016 - 17	38	0	0.0	6	15.8	2	5.3	8	21.1	5	13.2	0	0.0	22	57.9	1	2.6	1	2.6	1	

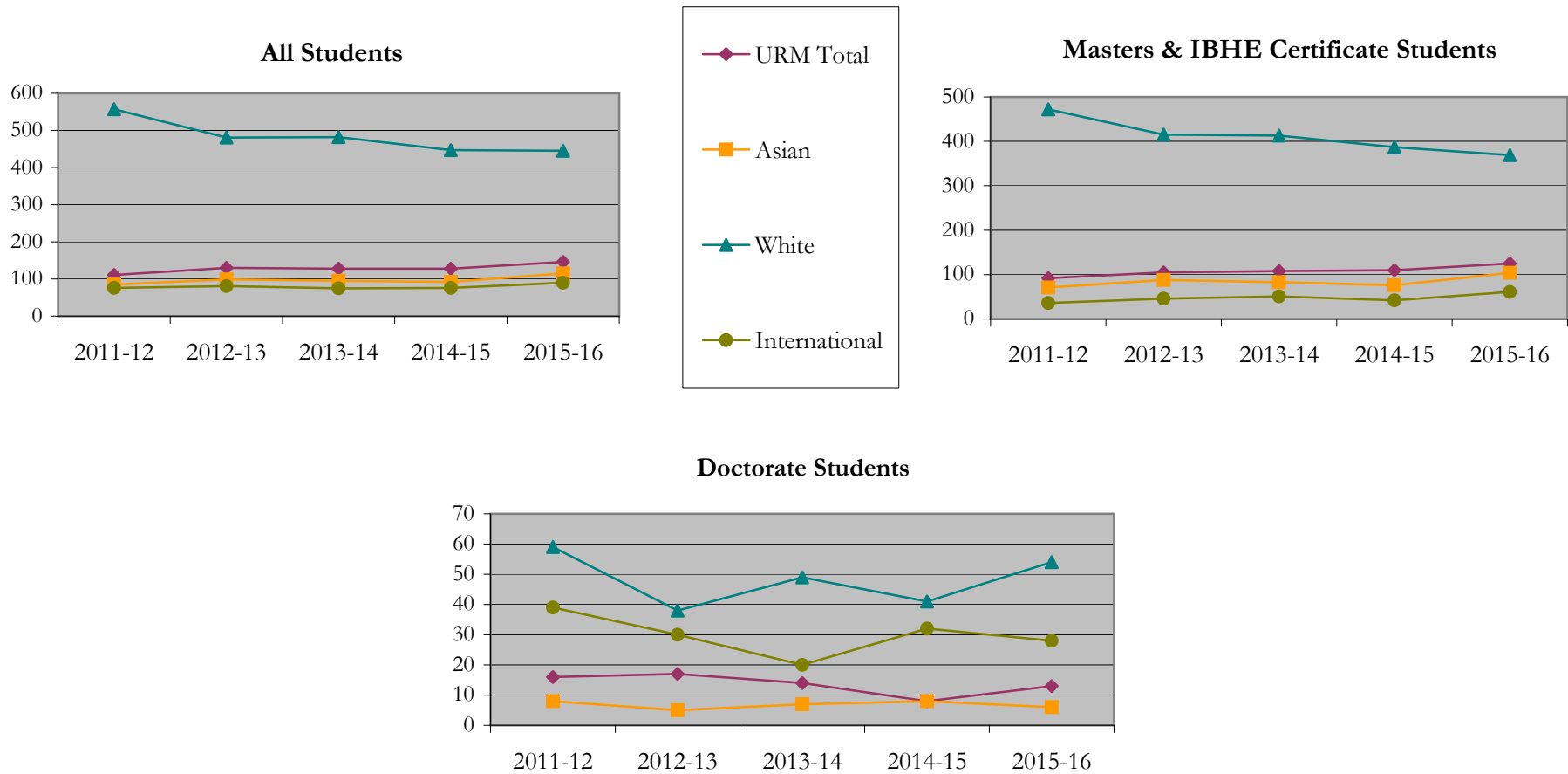
**Note:** Each row represents a fiscal year, beginning with Summer term and ending with Spring.



# Degrees Conferred by Race/Ethnicity

Life Sciences

Fall 2013 - Fall 2017



**Notes:** 1) URM stands for Under-Represented Minority and includes American Indian or Alaska Native; Black or African-American; Hispanic / Latino race/ethnicity groups

2) Individual URM groups, Native Hawaiian Pacific Islander, Two or More Races, and Other race/ethnicity categories left off this charts due to relatively low numbers

## Degrees Conferred

### by Gender

Life Sciences

Fall 2013 - Fall 2017

		Total	Male		Female		Not Reported
			Count	%	Count	%	
All	2012 - 13	868	192	22.1	674	77.6	2
	2013 - 14	844	202	23.9	638	75.6	4
	2014 - 15	822	177	21.5	640	77.9	5
	2015 - 16	796	188	23.6	605	76.0	3
	2016 - 17	827	195	23.6	625	75.6	7
Masters & IBHE Certificate	2012 - 13	706	136	19.3	568	80.5	2
	2013 - 14	701	157	22.4	540	77.0	4
	2014 - 15	694	143	20.6	546	78.7	5
	2015 - 16	660	132	20.0	526	79.7	2
	2016 - 17	683	145	21.2	531	77.7	7
Doctorate	2012 - 13	124	40	32.3	84	67.7	0
	2013 - 14	94	28	29.8	66	70.2	0
	2014 - 15	91	27	29.7	64	70.3	0
	2015 - 16	93	38	40.9	55	59.1	0
	2016 - 17	106	37	34.9	69	65.1	0
Campus Certificates	2012 - 13	38	16	42.1	22	57.9	0
	2013 - 14	49	17	34.7	32	65.3	0
	2014 - 15	37	7	18.9	30	81.1	0
	2015 - 16	43	18	41.9	24	55.8	1
	2016 - 17	38	13	34.2	25	65.8	0

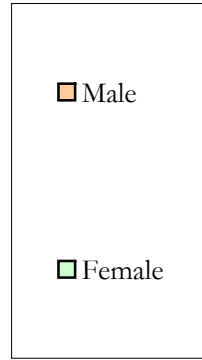
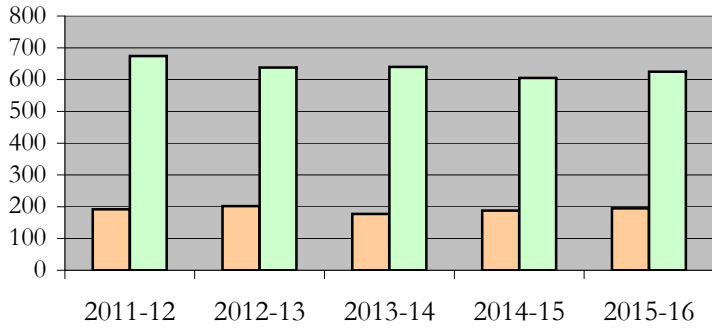
Note: Each row represents a fiscal year, beginning with Summer term and ending with Spring.

# Degrees Conferred by Gender

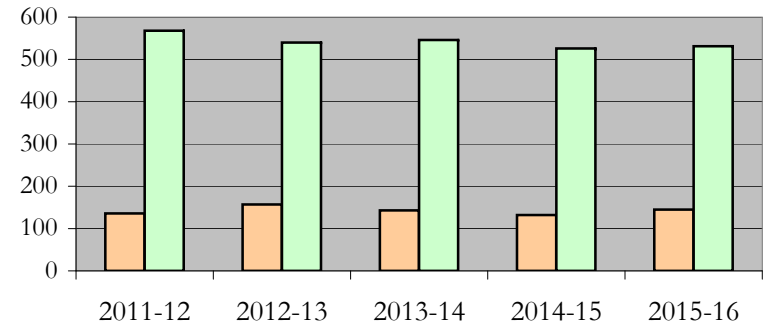
Life Sciences

Fall 2013 - Fall 2017

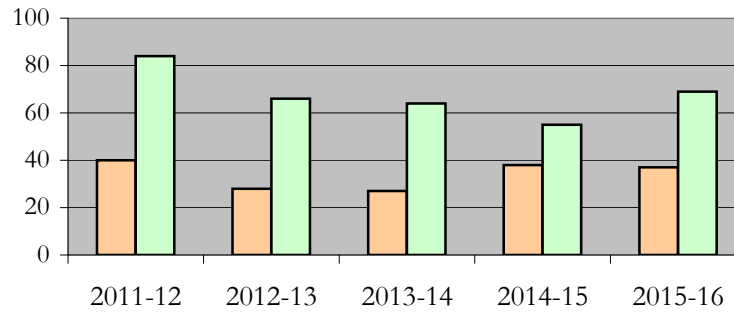
### All Students



### Masters & IBHE Certificate Students



### Doctorate Students



## **Appendix A**

Life Sciences

Fall 2013 - Fall 2017

### **List of program codes included in this document**

20FS0323MS	20FS1506MS	20FS1638PHD	20FY1636MPH
20FS0323PHD	20FS1511MS	20FS1721MS	20FY1637MPH
20FS0351MS	20FS1525MS	20FS1903MS	20FY1638MPH
20FS1024MS	20FS1525PHD	20FS1903PHD	20FY1638MPHU
20FS1024PHD	20FS1548MS	20FS3987PHD	20FY4021MPHU
20FS1069MS	20FS1548PHD	20FS4050PHD	2EFS5142MSU
20FS1072MS	20FS1563MS	20FS4060MHA	20FS1303CASU
20FS1072PHD	20FS1563PHD	20FS5020MS7	20FS1304CERU
20FS1075MS	20FS1564MS	20FS5140MS	20FN1209ADV
20FS1165MS	20FS1564PHD	20FS5173PHD	20FN1530ADV
20FS1166PHD	20FS1565MS	20FS5207MS	20FN1553ADV
20FS1303MS	20FS1565PHD	20FS5207PHD	20FN1622ADV
20FS1303MSU	20FS1568MS	20FS5390MS	20FS5081CERU
20FS1306MHPE	20FS1568PHD	20FS5390MS1	
20FS1306MHPU	20FS1584MS	20FS5394MHAU	
20FS1326PHD	20FS1584PHD	20FS5416PHD	
20FS1468PHD	20FS1630MS	20FS5503PHD	
20FS1497MS	20FS1634MS	20FS5512MS	
20FS1497MS1	20FS1634PHD	20FS5552MS	
20FS1497MS4	20FS1635MS	20FS5552PHD	
20FS1497MS5	20FS1635PHD	20FS8060PHD	
20FS1497MS6	20FS1636MS	20FY1631DRPH	
20FS1497MS7	20FS1636PHD	20FY1631DRPU	
20FS1497PHD	20FS1637MS	20FY1634MPH	
20FS1500MS	20FS1637PHD	20FY1635MPH	
20FS1500MS6	20FS1638MS	20FY1635MPHU	

**Notes:** 1) Program codes are sorted by alphabetical order in column-wise fashion

2) Program codes highlighted in yellow did not have applications, enrollment, nor degrees conferred in the covered period