

**GRADUATE
COLLEGE**

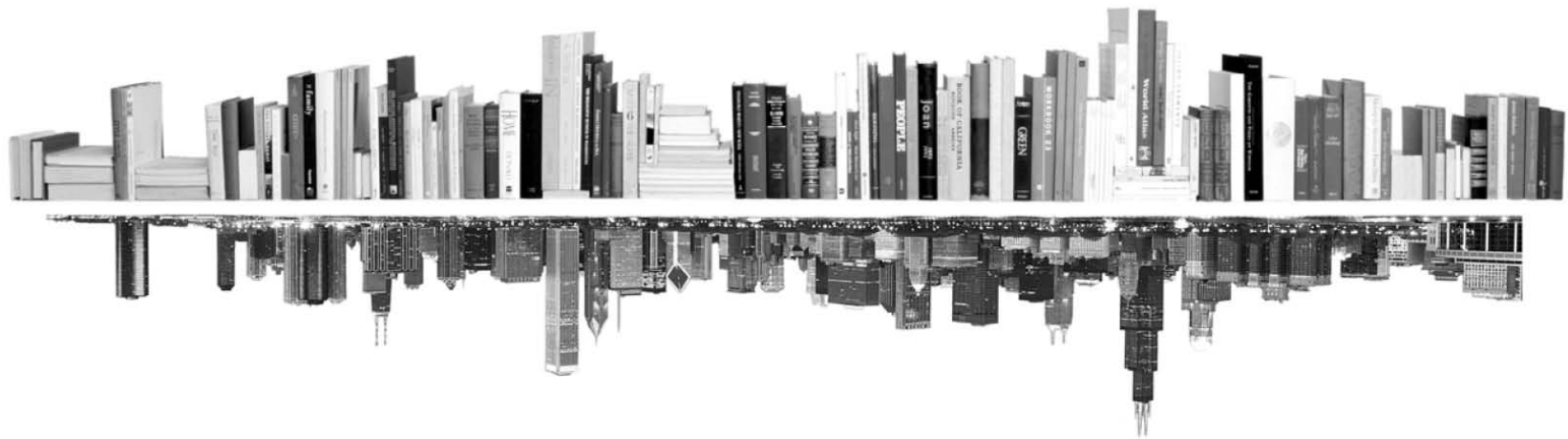


ENROLLMENT MANAGEMENT REPORT

GRADUATE DIVISION PROFILE

FINE ARTS AND HUMANITIES

FALL 2016





INTRODUCTION – DIVISION PROFILE

The following profile report focuses on the Fine Arts and Humanities graduate program division (as defined in the Graduate College by-laws).

This profile report tracks students, not enrollments. This means that students with dual enrollments are reported only once – under their first program.

Kevin Monahan
Director of Graduate Program Review and Information Systems
Graduate College, University of Illinois at Chicago
Voice: 312.413.0410 Email: kmonahan@uic.edu

TABLE OF CONTENTS

MATRICULATION	
Diversity Pipeline	1
APPLICATIONS	
by Race/Ethnicity	2 – 5
ENROLLMENT	
by Race/Ethnicity	6 – 9
by Type, Time, & Gender	10 – 13
DEGREES	
by Race/Ethnicity	14 – 15
by Gender	16 – 17
List of academic programs included in this report	Appendix A

Matriculation

Diversity Pipeline

Fine Arts and Humanities

Fall 2012 - Fall 2016

	Fall Semester Year	Applied					Admitted					Non-URM Admitted to Applied Yield %	URM Admitted to Applied Yield %	New Enrollment					Non-URM Enrolled to Admitted Yield %	URM Enrolled to Admitted Yield %	Total Enrollment				
		Grand Total	Non-URM Total		URM Total		Grand Total	Non-URM Total		URM Total				Grand Total	Non-URM Total		URM Total				Grand Total	Non-URM Total		URM Total	
			Count	%	Count	%		Count	%	Count	%				Count	%	Count	%				Count	%	Count	%
All	2012	1344	1196	89.0%	148	11.0%	389	345	88.7%	44	11.3%	28.8%	29.7%	137	118	86.1%	19	13.9%	34.2%	43.2%	558	487	87.3%	71	12.7%
	2013	1311	1164	88.8%	147	11.2%	405	362	89.4%	43	10.6%	31.1%	29.3%	150	129	86.0%	21	14.0%	35.6%	48.8%	522	458	87.7%	64	12.3%
	2014	1103	984	89.2%	119	10.8%	395	340	86.1%	55	13.9%	34.6%	46.2%	142	121	85.2%	21	14.8%	35.6%	38.2%	505	440	87.1%	65	12.9%
	2015	942	813	86.3%	129	13.7%	330	267	80.9%	63	19.1%	32.8%	48.8%	145	108	74.5%	37	25.5%	40.4%	58.7%	473	395	83.5%	78	16.5%
	2016	970	840	86.6%	130	13.4%	391	328	83.9%	63	16.1%	39.0%	48.5%	147	109	74.1%	38	25.9%	33.2%	60.3%	482	383	79.5%	99	20.5%
	Average	1134	999	88.1%	135	11.9%	382	328	86.0%	54	14.0%	32.9%	39.8%	144	117	81.1%	27	18.9%	35.6%	50.7%	508	433	85.2%	75	14.8%
Masters & IBHE Certificate	2012	916	812	88.6%	104	11.4%	327	288	88.1%	39	11.9%	35.5%	37.5%	106	87	82.1%	19	17.9%	30.2%	48.7%	308	267	86.7%	41	13.3%
	2013	850	755	88.8%	95	11.2%	337	302	89.6%	35	10.4%	40.0%	36.8%	125	107	85.6%	18	14.4%	35.4%	51.4%	278	237	85.3%	41	14.7%
	2014	729	640	87.8%	89	12.2%	330	281	85.2%	49	14.8%	43.9%	55.1%	113	94	83.2%	19	16.8%	33.5%	38.8%	271	227	83.8%	44	16.2%
	2015	567	485	85.5%	82	14.5%	277	231	83.4%	46	16.6%	47.6%	56.1%	114	87	76.3%	27	23.7%	37.7%	58.7%	248	199	80.2%	49	19.8%
	2016	633	542	85.6%	91	14.4%	324	272	84.0%	52	16.0%	50.2%	57.1%	119	88	73.9%	31	26.1%	32.4%	59.6%	264	199	75.4%	65	24.6%
	Average	739	647	87.5%	92	12.5%	319	275	86.1%	44	13.9%	42.5%	47.9%	115	93	80.2%	23	19.8%	33.7%	51.6%	274	226	82.5%	48	17.5%
Doctorate	2012	428	384	89.7%	44	10.3%	62	57	91.9%	5	8.1%	14.8%	11.4%	31	31	100.0%	0	0.0%	54.4%	0.0%	250	220	88.0%	30	12.0%
	2013	461	409	88.7%	52	11.3%	68	60	88.2%	8	11.8%	14.7%	15.4%	25	22	88.0%	3	12.0%	36.7%	37.5%	244	221	90.6%	23	9.4%
	2014	374	344	92.0%	30	8.0%	65	59	90.8%	6	9.2%	17.2%	20.0%	29	27	93.1%	2	6.9%	45.8%	33.3%	234	213	91.0%	21	9.0%
	2015	375	328	87.5%	47	12.5%	53	36	67.9%	17	32.1%	11.0%	36.2%	31	21	67.7%	10	32.3%	58.3%	58.8%	225	196	87.1%	29	12.9%
	2016	337	298	88.4%	39	11.6%	67	56	83.6%	11	16.4%	18.8%	28.2%	28	21	75.0%	7	25.0%	37.5%	63.6%	218	184	84.4%	34	15.6%
	Average	395	353	89.3%	42	10.7%	63	54	85.1%	9	14.9%	15.2%	22.2%	29	24	84.7%	4	15.3%	45.5%	46.8%	234	207	88.3%	27	11.7%
Non-Degree & Campus Certificate	2012	0	0	0.0%	0	0.0%	0	0	0.0%	0	0.0%	0.0%	0.0%	0	0	0.0%	0	0.0%	0.0%	0.0%	0	0	0.0%	0	0.0%
	2013	0	0	0.0%	0	0.0%	0	0	0.0%	0	0.0%	0.0%	0.0%	0	0	0.0%	0	0.0%	0.0%	0.0%	0	0	0.0%	0	0.0%
	2014	0	0	0.0%	0	0.0%	0	0	0.0%	0	0.0%	0.0%	0.0%	0	0	0.0%	0	0.0%	0.0%	0.0%	0	0	0.0%	0	0.0%
	2015	0	0	0.0%	0	0.0%	0	0	0.0%	0	0.0%	0.0%	0.0%	0	0	0.0%	0	0.0%	0.0%	0.0%	0	0	0.0%	0	0.0%
	2016	0	0	0.0%	0	0.0%	0	0	0.0%	0	0.0%	0.0%	0.0%	0	0	0.0%	0	0.0%	0.0%	0.0%	0	0	0.0%	0	0.0%
	Average	0	0	0.0%	0	0.0%	0	0	0.0%	0	0.0%	0.0%	0.0%	0	0	0.0%	0	0.0%	0.0%	0.0%	0	0	0.0%	0	0.0%

Note: URM stands for Under-Represented Minority and includes American Indian or Alaska Native; Black or African-American; Hispanic / Latino race/ethnicity groups

**Applications - Total
by Race/Ethnicity**

Fine Arts and Humanities

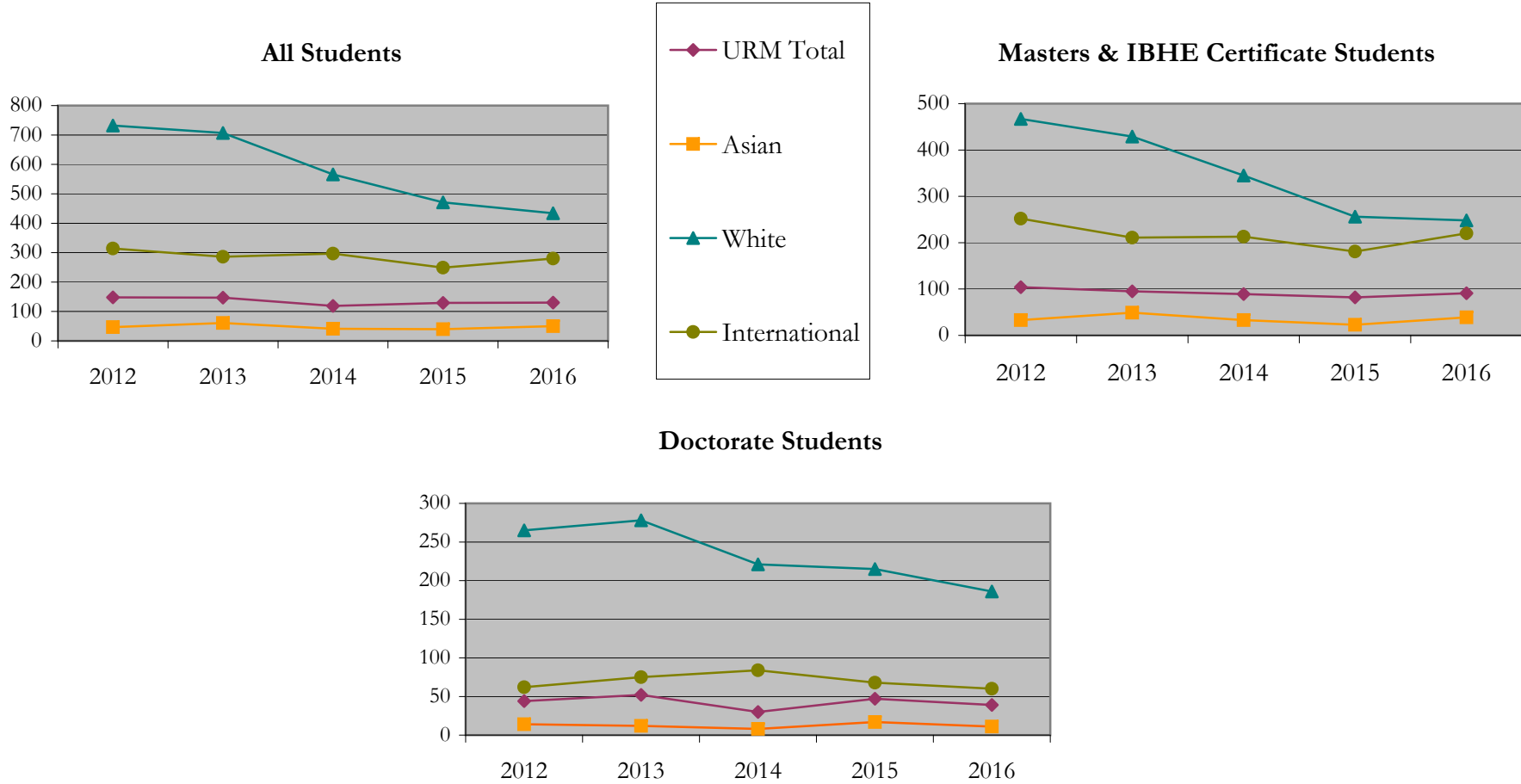
Fall 2012 - Fall 2016

		Total	Under Represented Minorities (URM)																Not Reported		
			American Indian or Alaska Native		Black or African American		Hispanic / Latino		URM Total		Asian		Native Hawaiian or Pacific Islander		White		Two or More Races			International	
			Count	%	Count	%	Count	%	Count	%	Count	%	Count	%	Count	%	Count	%		Count	%
All	2012	1345	1	0.1	44	3.3	103	7.7	148	11.0	47	3.5	3	0.2	732	54.4	26	1.9	314	23.3	75
	2013	1311	1	0.1	34	2.6	112	8.5	147	11.2	61	4.7	0	0.0	707	53.9	38	2.9	286	21.8	72
	2014	1104	0	0.0	31	2.8	88	8.0	119	10.8	41	3.7	1	0.1	566	51.3	29	2.6	297	26.9	51
	2015	942	4	0.4	34	3.6	91	9.7	129	13.7	40	4.2	0	0.0	471	50.0	21	2.2	249	26.4	32
	2016	970	1	0.1	34	3.5	95	9.8	130	13.4	50	5.2	0	0.0	434	44.7	22	2.3	280	28.9	54
Masters & IBHE Certificate	2012	917	1	0.1	30	3.3	73	8.0	104	11.3	33	3.6	1	0.1	467	50.9	19	2.1	252	27.5	41
	2013	850	1	0.1	27	3.2	67	7.9	95	11.2	49	5.8	0	0.0	429	50.5	24	2.8	211	24.8	42
	2014	730	0	0.0	23	3.2	66	9.0	89	12.2	33	4.5	0	0.0	345	47.3	20	2.7	213	29.2	30
	2015	567	2	0.4	26	4.6	54	9.5	82	14.5	23	4.1	0	0.0	256	45.1	8	1.4	181	31.9	17
	2016	633	0	0.0	25	3.9	66	10.4	91	14.4	39	6.2	0	0.0	248	39.2	16	2.5	220	34.8	19
Doctorate	2012	428	0	0.0	14	3.3	30	7.0	44	10.3	14	3.3	2	0.5	265	61.9	7	1.6	62	14.5	34
	2013	461	0	0.0	7	1.5	45	9.8	52	11.3	12	2.6	0	0.0	278	60.3	14	3.0	75	16.3	30
	2014	374	0	0.0	8	2.1	22	5.9	30	8.0	8	2.1	1	0.3	221	59.1	9	2.4	84	22.5	21
	2015	375	2	0.5	8	2.1	37	9.9	47	12.5	17	4.5	0	0.0	215	57.3	13	3.5	68	18.1	15
	2016	337	1	0.3	9	2.7	29	8.6	39	11.6	11	3.3	0	0.0	186	55.2	6	1.8	60	17.8	35
Non-Degree & Campus Certificate	2012	0	0	0.0	0	0.0	0	0.0	0	0.0	0	0.0	0	0.0	0	0.0	0	0.0	0	0.0	0
	2013	0	0	0.0	0	0.0	0	0.0	0	0.0	0	0.0	0	0.0	0	0.0	0	0.0	0	0.0	0
	2014	0	0	0.0	0	0.0	0	0.0	0	0.0	0	0.0	0	0.0	0	0.0	0	0.0	0	0.0	0
	2015	0	0	0.0	0	0.0	0	0.0	0	0.0	0	0.0	0	0.0	0	0.0	0	0.0	0	0.0	0
	2016	0	0	0.0	0	0.0	0	0.0	0	0.0	0	0.0	0	0.0	0	0.0	0	0.0	0	0.0	0

Note: URM stands for Under-Represented Minority and includes American Indian or Alaska Native; Black or African-American; Hispanic / Latino race/ethnicity groups

Applications - Total by Race/Ethnicity

Fine Arts and Humanities
Fall 2012 - Fall 2016



Notes: 1) URM stands for Under-Represented Minority and includes American Indian or Alaska Native; Black or African-American; Hispanic / Latino race/ethnicity groups
 2) Individual URM groups, Native Hawaiian Pacific Islander, Two or More Races, and Other race/ethnicity categories left off this charts due to relatively low numbers

Applications - Admitted

by Race/Ethnicity

Fine Arts and Humanities

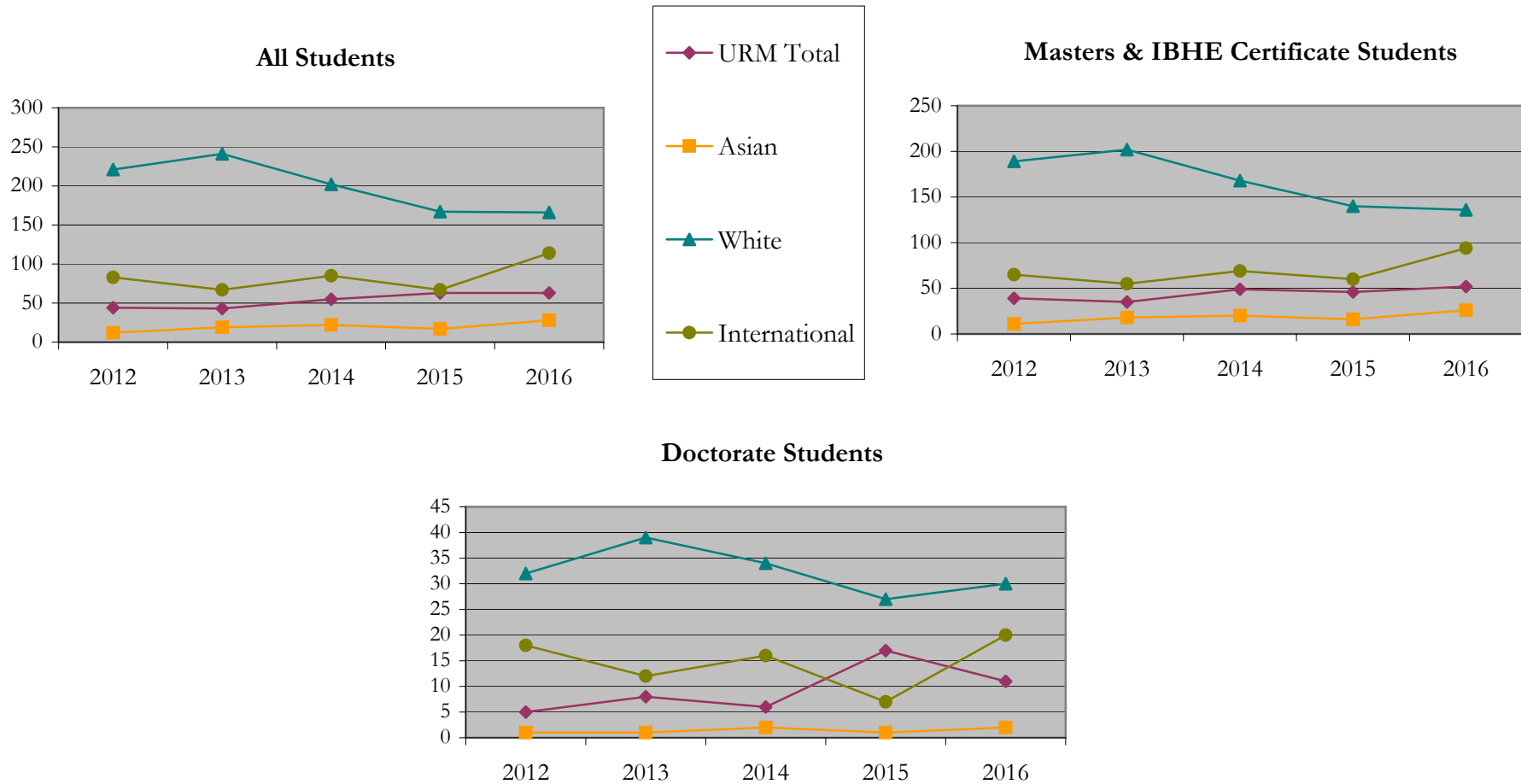
Fall 2012 - Fall 2016

		Total	Under Represented Minorities (URM)								Asian		Native Hawaiian or Pacific Islander		White		Two or More Races		International		Not Reported
			American Indian or Alaska Native		Black or African American		Hispanic / Latino		URM Total												
			Count	%	Count	%	Count	%	Count	%											
All	2012	389	0	0.0	9	2.3	35	9.0	44	11.3	12	3.1	1	0.3	221	56.8	10	2.6	83	21.3	18
	2013	405	1	0.2	8	2.0	34	8.4	43	10.6	19	4.7	0	0.0	241	59.5	13	3.2	67	16.5	22
	2014	395	0	0.0	12	3.0	43	10.9	55	13.9	22	5.6	0	0.0	202	51.1	15	3.8	85	21.5	16
	2015	330	2	0.6	16	4.8	45	13.6	63	19.1	17	5.2	0	0.0	167	50.6	9	2.7	67	20.3	7
	2016	391	0	0.0	14	3.6	49	12.5	63	16.1	28	7.2	0	0.0	166	42.5	9	2.3	114	29.2	11
Masters & IBHE Certificate	2012	327	0	0.0	8	2.4	31	9.5	39	11.9	11	3.4	1	0.3	189	57.8	8	2.4	65	19.9	14
	2013	337	1	0.3	8	2.4	26	7.7	35	10.4	18	5.3	0	0.0	202	59.9	9	2.7	55	16.3	18
	2014	330	0	0.0	9	2.7	40	12.1	49	14.8	20	6.1	0	0.0	168	50.9	13	3.9	69	20.9	11
	2015	277	1	0.4	12	4.3	33	11.9	46	16.6	16	5.8	0	0.0	140	50.5	8	2.9	60	21.7	7
	2016	324	0	0.0	12	3.7	40	12.3	52	16.0	26	8.0	0	0.0	136	42.0	9	2.8	94	29.0	7
Doctorate	2012	62	0	0.0	1	1.6	4	6.5	5	8.1	1	1.6	0	0.0	32	51.6	2	3.2	18	29.0	4
	2013	68	0	0.0	0	0.0	8	11.8	8	11.8	1	1.5	0	0.0	39	57.4	4	5.9	12	17.6	4
	2014	65	0	0.0	3	4.6	3	4.6	6	9.2	2	3.1	0	0.0	34	52.3	2	3.1	16	24.6	5
	2015	53	1	1.9	4	7.5	12	22.6	17	32.1	1	1.9	0	0.0	27	50.9	1	1.9	7	13.2	0
	2016	67	0	0.0	2	3.0	9	13.4	11	16.4	2	3.0	0	0.0	30	44.8	0	0.0	20	29.9	4
Non-Degree & Campus Certificate	2012	0	0	0.0	0	0.0	0	0.0	0	0.0	0	0.0	0	0.0	0	0.0	0	0.0	0	0.0	0
	2013	0	0	0.0	0	0.0	0	0.0	0	0.0	0	0.0	0	0.0	0	0.0	0	0.0	0	0.0	0
	2014	0	0	0.0	0	0.0	0	0.0	0	0.0	0	0.0	0	0.0	0	0.0	0	0.0	0	0.0	0
	2015	0	0	0.0	0	0.0	0	0.0	0	0.0	0	0.0	0	0.0	0	0.0	0	0.0	0	0.0	0
	2016	0	0	0.0	0	0.0	0	0.0	0	0.0	0	0.0	0	0.0	0	0.0	0	0.0	0	0.0	0

Note: URM stands for Under-Represented Minority and includes American Indian or Alaska Native; Black or African-American; Hispanic / Latino race/ethnicity groups

Applications - Admitted by Race/Ethnicity

Fine Arts and Humanities
Fall 2012 - Fall 2016



Notes: 1) URM stands for Under-Represented Minority and includes American Indian or Alaska Native; Black or African-American; Hispanic / Latino race/ethnicity groups

2) Individual URM groups, Native Hawaiian Pacific Islander, Two or More Races, and Other race/ethnicity categories left off this charts due to relatively low numbers

**Enrollment - New
by Race/Ethnicity**

Fine Arts and Humanities

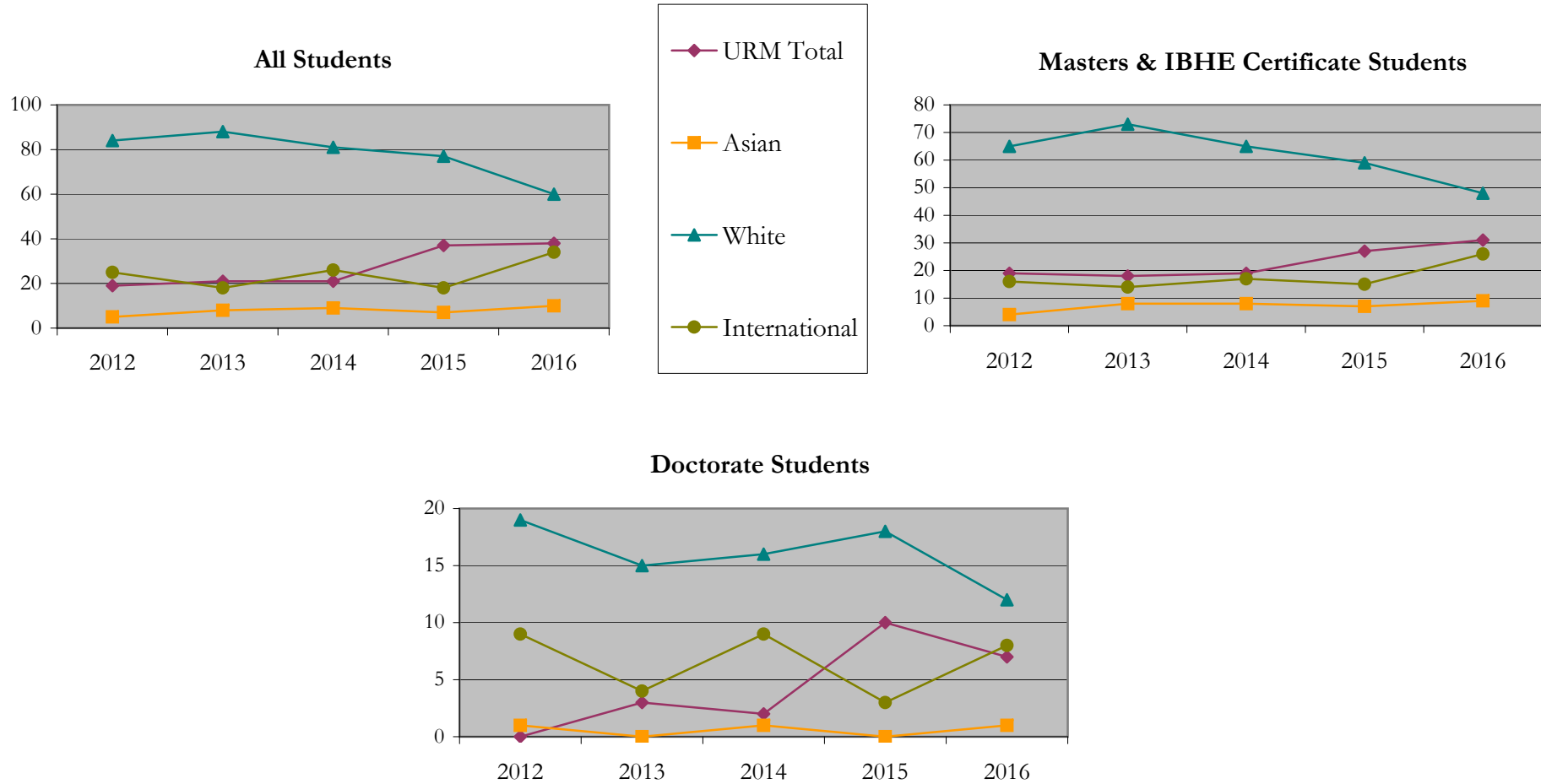
Fall 2012 - Fall 2016

		Total	Under Represented Minorities (URM)								Asian		Native Hawaiian or Pacific Islander		White		Two or More Races		International		Not Reported
			American Indian or Alaska Native		Black or African American		Hispanic / Latino		URM Total												
			Count	%	Count	%	Count	%	Count	%											
All	2012	137	0	0.0	1	0.7	18	13.1	19	13.9	5	3.6	0	0.0	84	61.3	1	0.7	25	18.2	3
	2013	150	1	0.7	6	4.0	14	9.3	21	14.0	8	5.3	0	0.0	88	58.7	6	4.0	18	12.0	9
	2014	142	0	0.0	4	2.8	17	12.0	21	14.8	9	6.3	0	0.0	81	57.0	4	2.8	26	18.3	1
	2015	145	1	0.7	7	4.8	29	20.0	37	25.5	7	4.8	0	0.0	77	53.1	2	1.4	18	12.4	4
	2016	147	0	0.0	9	6.1	29	19.7	38	25.9	10	6.8	0	0.0	60	40.8	5	3.4	34	23.1	0
Masters & IBHE Certificate	2012	106	0	0.0	1	0.9	18	17.0	19	17.9	4	3.8	0	0.0	65	61.3	1	0.9	16	15.1	1
	2013	125	1	0.8	6	4.8	11	8.8	18	14.4	8	6.4	0	0.0	73	58.4	4	3.2	14	11.2	8
	2014	113	0	0.0	2	1.8	17	15.0	19	16.8	8	7.1	0	0.0	65	57.5	4	3.5	17	15.0	0
	2015	114	1	0.9	5	4.4	21	18.4	27	23.7	7	6.1	0	0.0	59	51.8	2	1.8	15	13.2	4
	2016	119	0	0.0	9	7.6	22	18.5	31	26.1	9	7.6	0	0.0	48	40.3	5	4.2	26	21.8	0
Doctorate	2012	31	0	0.0	0	0.0	0	0.0	0	0.0	1	3.2	0	0.0	19	61.3	0	0.0	9	29.0	2
	2013	25	0	0.0	0	0.0	3	12.0	3	12.0	0	0.0	0	0.0	15	60.0	2	8.0	4	16.0	1
	2014	29	0	0.0	2	6.9	0	0.0	2	6.9	1	3.4	0	0.0	16	55.2	0	0.0	9	31.0	1
	2015	31	0	0.0	2	6.5	8	25.8	10	32.3	0	0.0	0	0.0	18	58.1	0	0.0	3	9.7	0
	2016	28	0	0.0	0	0.0	7	25.0	7	25.0	1	3.6	0	0.0	12	42.9	0	0.0	8	28.6	0
Non-Degree & Campus Certificate	2012	0	0	0.0	0	0.0	0	0.0	0	0.0	0	0.0	0	0.0	0	0.0	0	0.0	0	0.0	0
	2013	0	0	0.0	0	0.0	0	0.0	0	0.0	0	0.0	0	0.0	0	0.0	0	0.0	0	0.0	0
	2014	0	0	0.0	0	0.0	0	0.0	0	0.0	0	0.0	0	0.0	0	0.0	0	0.0	0	0.0	0
	2015	0	0	0.0	0	0.0	0	0.0	0	0.0	0	0.0	0	0.0	0	0.0	0	0.0	0	0.0	0
	2016	0	0	0.0	0	0.0	0	0.0	0	0.0	0	0.0	0	0.0	0	0.0	0	0.0	0	0.0	0

Note: URM stands for Under-Represented Minority and includes American Indian or Alaska Native; Black or African-American; Hispanic / Latino race/ethnicity groups

Enrollment - New by Race/Ethnicity

Fine Arts and Humanities
Fall 2012 - Fall 2016



Notes: 1) URM stands for Under-Represented Minority and includes American Indian or Alaska Native; Black or African-American; Hispanic / Latino race/ethnicity groups

2) Individual URM groups, Native Hawaiian Pacific Islander, Two or More Races, and Other race/ethnicity categories left off this charts due to relatively low numbers

**Enrollment - Total
by Race/Ethnicity**

Fine Arts and Humanities

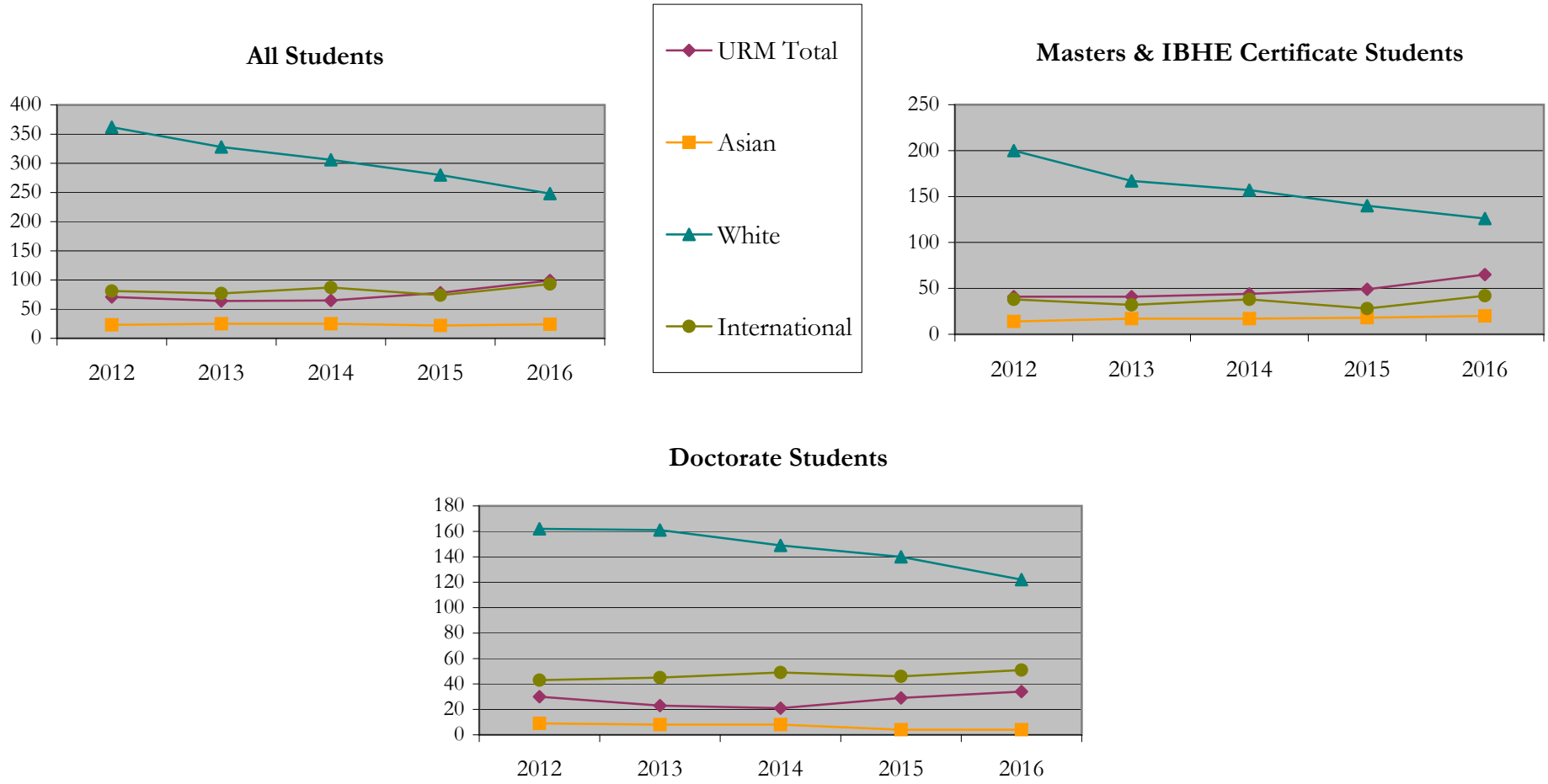
Fall 2012 - Fall 2016

		Total	Under Represented Minorities (URM)								Asian		Native Hawaiian or Pacific Islander		White		Two or More Races		International		Not Reported
			American Indian or Alaska Native		Black or African American		Hispanic / Latino		URM Total												
			Count	%	Count	%	Count	%	Count	%											
All	2012	558	0	0.0	10	1.8	61	10.9	71	12.7	23	4.1	0	0.0	362	64.9	9	1.6	81	14.5	12
	2013	522	1	0.2	12	2.3	51	9.8	64	12.3	25	4.8	0	0.0	328	62.8	11	2.1	77	14.8	17
	2014	505	1	0.2	12	2.4	52	10.3	65	12.9	25	5.0	0	0.0	306	60.6	11	2.2	87	17.2	11
	2015	473	1	0.2	13	2.7	64	13.5	78	16.5	22	4.7	0	0.0	280	59.2	10	2.1	74	15.6	9
	2016	482	2	0.4	18	3.7	79	16.4	99	20.5	24	5.0	0	0.0	248	51.5	12	2.5	93	19.3	6
Masters & IBHE Certificate	2012	308	0	0.0	5	1.6	36	11.7	41	13.3	14	4.5	0	0.0	200	64.9	5	1.6	38	12.3	10
	2013	278	1	0.4	8	2.9	32	11.5	41	14.7	17	6.1	0	0.0	167	60.1	6	2.2	32	11.5	15
	2014	271	1	0.4	9	3.3	34	12.5	44	16.2	17	6.3	0	0.0	157	57.9	7	2.6	38	14.0	8
	2015	248	1	0.4	9	3.6	39	15.7	49	19.8	18	7.3	0	0.0	140	56.5	7	2.8	28	11.3	6
	2016	264	2	0.8	14	5.3	49	18.6	65	24.6	20	7.6	0	0.0	126	47.7	8	3.0	42	15.9	3
Doctorate	2012	250	0	0.0	5	2.0	25	10.0	30	12.0	9	3.6	0	0.0	162	64.8	4	1.6	43	17.2	2
	2013	244	0	0.0	4	1.6	19	7.8	23	9.4	8	3.3	0	0.0	161	66.0	5	2.0	45	18.4	2
	2014	234	0	0.0	3	1.3	18	7.7	21	9.0	8	3.4	0	0.0	149	63.7	4	1.7	49	20.9	3
	2015	225	0	0.0	4	1.8	25	11.1	29	12.9	4	1.8	0	0.0	140	62.2	3	1.3	46	20.4	3
	2016	218	0	0.0	4	1.8	30	13.8	34	15.6	4	1.8	0	0.0	122	56.0	4	1.8	51	23.4	3
Non-Degree & Campus Certificate	2012	0	0	0.0	0	0.0	0	0.0	0	0.0	0	0.0	0	0.0	0	0.0	0	0.0	0	0.0	0
	2013	0	0	0.0	0	0.0	0	0.0	0	0.0	0	0.0	0	0.0	0	0.0	0	0.0	0	0.0	0
	2014	0	0	0.0	0	0.0	0	0.0	0	0.0	0	0.0	0	0.0	0	0.0	0	0.0	0	0.0	0
	2015	0	0	0.0	0	0.0	0	0.0	0	0.0	0	0.0	0	0.0	0	0.0	0	0.0	0	0.0	0
	2016	0	0	0.0	0	0.0	0	0.0	0	0.0	0	0.0	0	0.0	0	0.0	0	0.0	0	0.0	0

Note: URM stands for Under-Represented Minority and includes American Indian or Alaska Native; Black or African-American; Hispanic / Latino race/ethnicity groups

Enrollment - Total by Race/Ethnicity

Fine Arts and Humanities
Fall 2012 - Fall 2016



Notes: 1) URM stands for Under-Represented Minority and includes American Indian or Alaska Native; Black or African-American; Hispanic / Latino race/ethnicity groups
 2) Individual URM groups, Native Hawaiian Pacific Islander, Two or More Races, and Other race/ethnicity categories left off this charts due to relatively low numbers

Enrollment

by Student Type, Enrollment Time, and Gender

Fine Arts and Humanities

Fall 2012 - Fall 2016

		Total	New		Continuing		Male		Female		Gender Not Reported	Part-time		Full-time	
			Count	%	Count	%	Count	%	Count	%		Count	%	Count	%
All	2012	558	137	24.6	421	75.4	251	45.0	307	55.0	0	96	17.2	462	82.8
	2013	522	150	28.7	372	71.3	236	45.2	285	54.6	1	71	13.6	451	86.4
	2014	505	142	28.1	363	71.9	218	43.2	286	56.6	1	90	17.8	415	82.2
	2015	473	145	30.7	328	69.3	217	45.9	255	53.9	1	78	16.5	395	83.5
	2016	482	147	30.5	335	69.5	210	43.6	270	56.0	2	72	14.9	410	85.1
Masters & IBHE Certificate	2012	308	106	34.4	202	65.6	134	43.5	174	56.5	0	45	14.6	263	85.4
	2013	278	125	45.0	153	55.0	117	42.1	160	57.6	1	30	10.8	248	89.2
	2014	271	113	41.7	158	58.3	106	39.1	164	60.5	1	41	15.1	230	84.9
	2015	248	114	46.0	134	54.0	102	41.1	145	58.5	1	38	15.3	210	84.7
	2016	264	119	45.1	145	54.9	97	36.7	165	62.5	2	38	14.4	226	85.6
Doctorate	2012	250	31	12.4	219	87.6	117	46.8	133	53.2	0	51	20.4	199	79.6
	2013	244	25	10.2	219	89.8	119	48.8	125	51.2	0	41	16.8	203	83.2
	2014	234	29	12.4	205	87.6	112	47.9	122	52.1	0	49	20.9	185	79.1
	2015	225	31	13.8	194	86.2	115	51.1	110	48.9	0	40	17.8	185	82.2
	2016	218	28	12.8	190	87.2	113	51.8	105	48.2	0	34	15.6	184	84.4
Non-Degree & Campus Certificate	2012	0	0	0.0	0	0.0	0	0.0	0	0.0	0	0	0.0	0	0.0
	2013	0	0	0.0	0	0.0	0	0.0	0	0.0	0	0	0.0	0	0.0
	2014	0	0	0.0	0	0.0	0	0.0	0	0.0	0	0	0.0	0	0.0
	2015	0	0	0.0	0	0.0	0	0.0	0	0.0	0	0	0.0	0	0.0
	2016	0	0	0.0	0	0.0	0	0.0	0	0.0	0	0	0.0	0	0.0

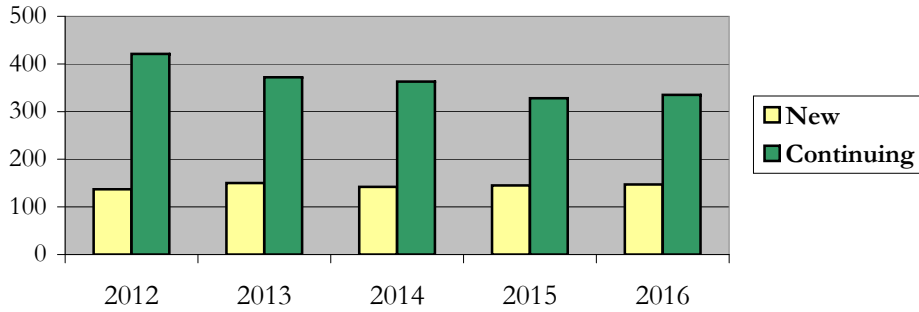
Enrollment

by Student Type, Enrollment Time, and Gender (All Students)

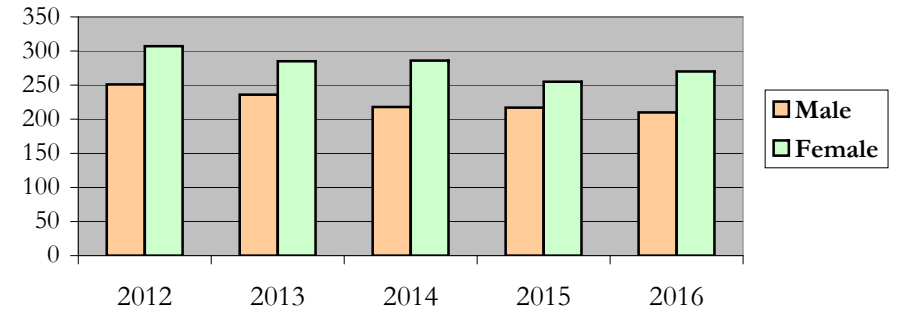
Fine Arts and Humanities

Fall 2012 - Fall 2016

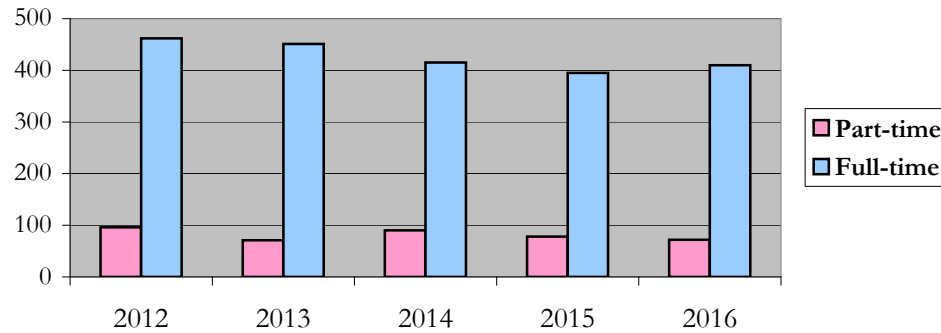
New and Continuing Enrollment



Enrollment by Gender



Enrollment by Student Enrollment Time

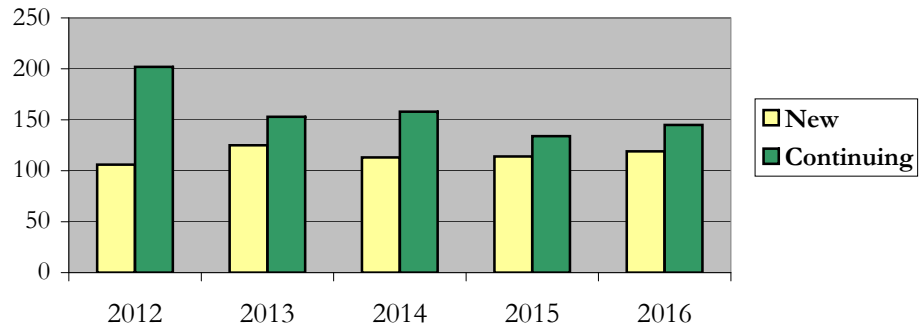


Enrollment
by Student Type, Enrollment Time, and Gender (Master's Students)

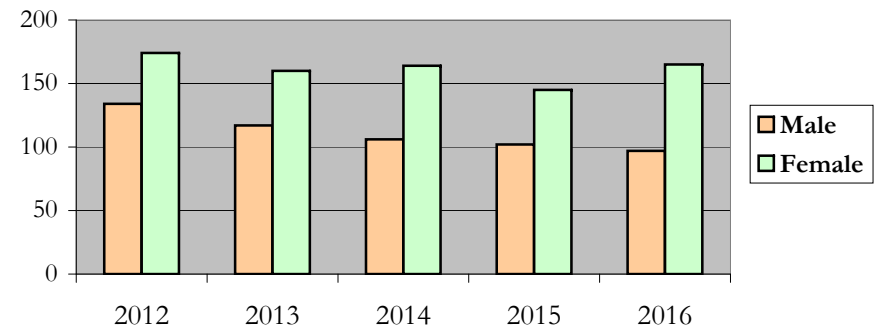
Fine Arts and Humanities

Fall 2012 - Fall 2016

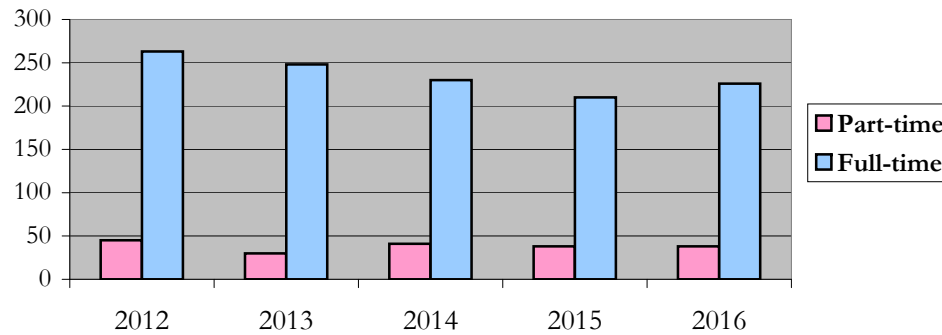
New and Continuing Enrollment



Enrollment by Gender



Enrollment by Student Enrollment Time



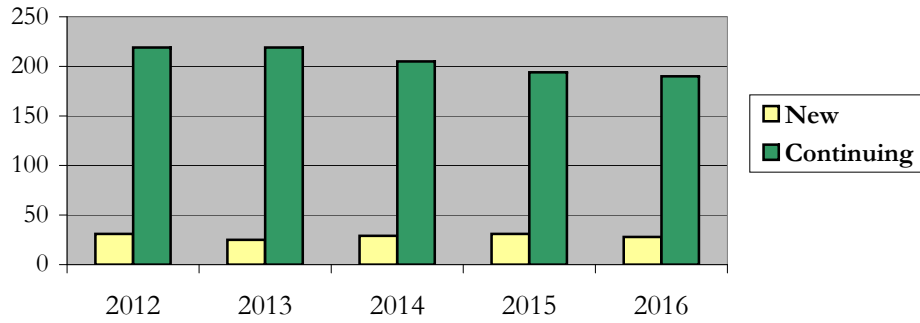
Enrollment

by Student Type, Enrollment Time, and Gender (Doctorate Students)

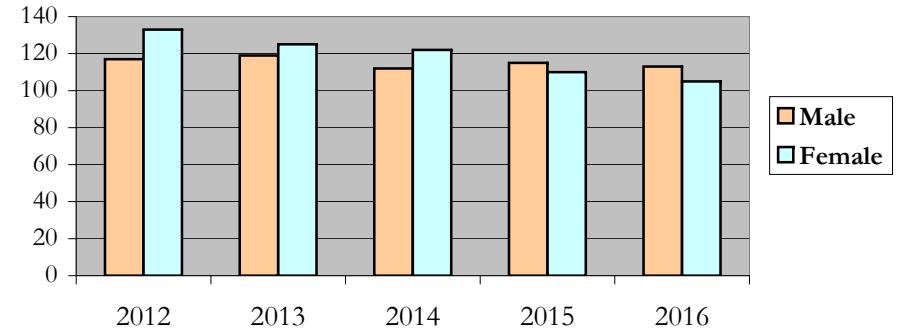
Fine Arts and Humanities

Fall 2012 - Fall 2016

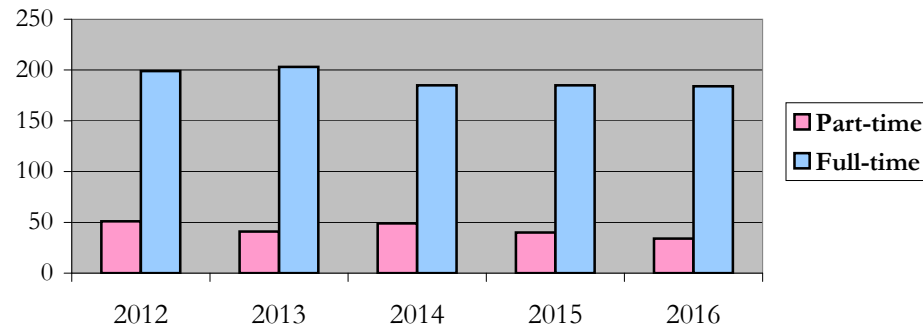
New and Continuing Enrollment



Enrollment by Gender



Enrollment by Student Enrollment Time



Degrees Conferred by Race/Ethnicity

Fine Arts and Humanities

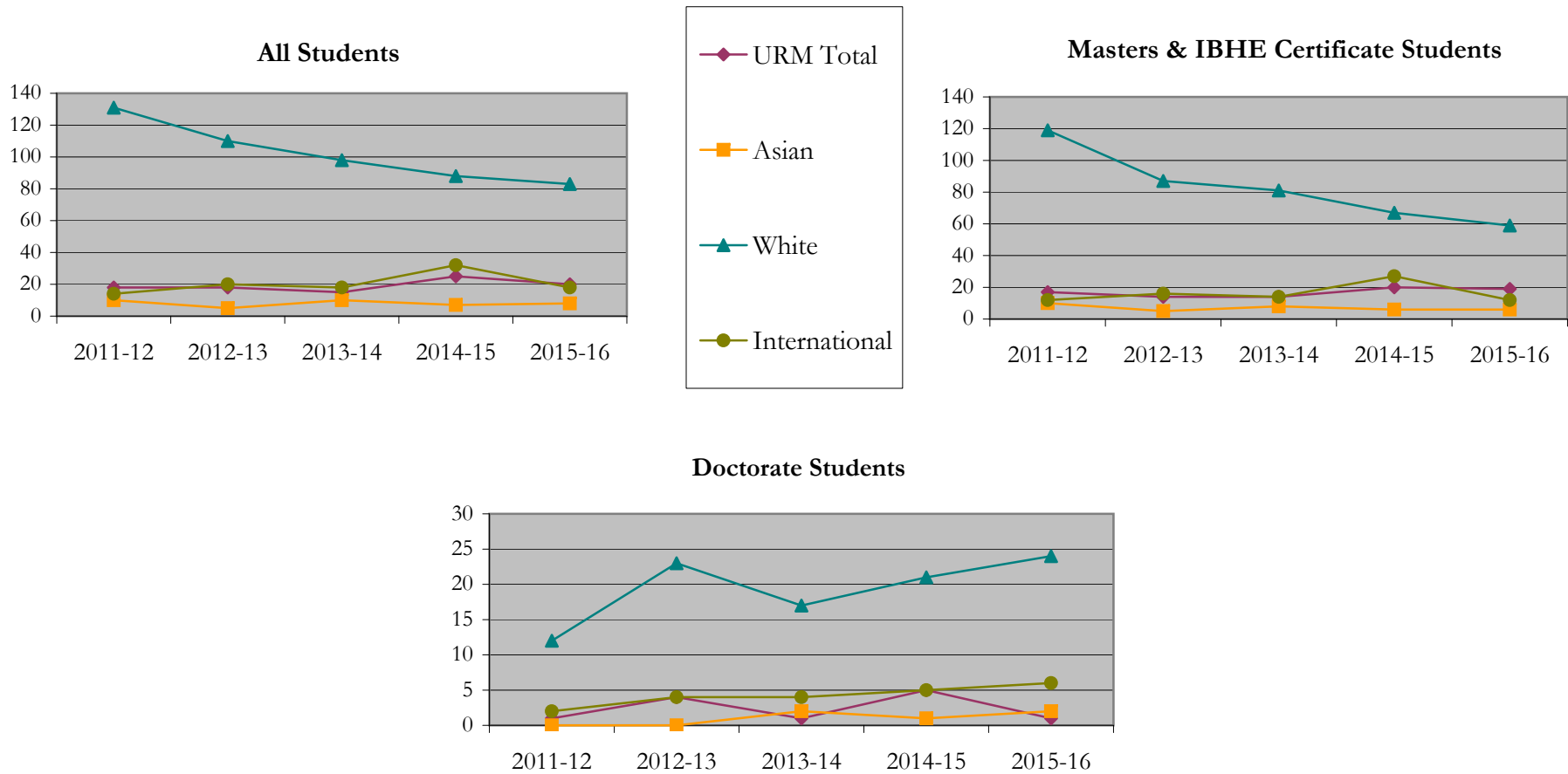
Fall 2012 - Fall 2016

		Total	Under Represented Minorities (URM)								Asian	Native Hawaiian or Pacific Islander		White		Two or More Races		International		Not Reported	
			American Indian or Alaska Native		Black or African American		Hispanic / Latino		URM Total			Count	%	Count	%	Count	%	Count	%	Count	%
			Count	%	Count	%	Count	%	Count	%											
All	2011 - 12	177	0	0.0	2	1.1	16	9.0	18	10.2	10	5.6	0	0.0	131	74.0	2	1.1	14	7.9	2
	2012 - 13	160	0	0.0	4	2.5	14	8.8	18	11.3	5	3.1	0	0.0	110	68.8	2	1.3	20	12.5	5
	2013 - 14	149	0	0.0	1	0.7	14	9.4	15	10.1	10	6.7	0	0.0	98	65.8	3	2.0	18	12.1	5
	2014 - 15	159	0	0.0	5	3.1	20	12.6	25	15.7	7	4.4	0	0.0	88	55.3	3	1.9	32	20.1	4
	2015 - 16	138	1	0.7	3	2.2	16	11.6	20	14.5	8	5.8	0	0.0	83	60.1	4	2.9	18	13.0	5
Masters & IBHE Certificate	2011 - 12	160	0	0.0	1	0.6	16	10.0	17	10.6	10	6.3	0	0.0	119	74.4	1	0.6	12	7.5	1
	2012 - 13	129	0	0.0	3	2.3	11	8.5	14	10.9	5	3.9	0	0.0	87	67.4	2	1.6	16	12.4	5
	2013 - 14	124	0	0.0	0	0.0	14	11.3	14	11.3	8	6.5	0	0.0	81	65.3	2	1.6	14	11.3	5
	2014 - 15	127	0	0.0	4	3.1	16	12.6	20	15.7	6	4.7	0	0.0	67	52.8	3	2.4	27	21.3	4
	2015 - 16	104	1	1.0	2	1.9	16	15.4	19	18.3	6	5.8	0	0.0	59	56.7	3	2.9	12	11.5	5
Doctorate	2011 - 12	17	0	0.0	1	5.9	0	0.0	1	5.9	0	0.0	0	0.0	12	70.6	1	5.9	2	11.8	1
	2012 - 13	31	0	0.0	1	3.2	3	9.7	4	12.9	0	0.0	0	0.0	23	74.2	0	0.0	4	12.9	0
	2013 - 14	25	0	0.0	1	4.0	0	0.0	1	4.0	2	8.0	0	0.0	17	68.0	1	4.0	4	16.0	0
	2014 - 15	32	0	0.0	1	3.1	4	12.5	5	15.6	1	3.1	0	0.0	21	65.6	0	0.0	5	15.6	0
	2015 - 16	34	0	0.0	1	2.9	0	0.0	1	2.9	2	5.9	0	0.0	24	70.6	1	2.9	6	17.6	0
Non-Degree & Campus Certificate	2011 - 12	0	0	0.0	0	0.0	0	0.0	0	0.0	0	0.0	0	0.0	0	0.0	0	0.0	0	0.0	0
	2012 - 13	0	0	0.0	0	0.0	0	0.0	0	0.0	0	0.0	0	0.0	0	0.0	0	0.0	0	0.0	0
	2013 - 14	0	0	0.0	0	0.0	0	0.0	0	0.0	0	0.0	0	0.0	0	0.0	0	0.0	0	0.0	0
	2014 - 15	0	0	0.0	0	0.0	0	0.0	0	0.0	0	0.0	0	0.0	0	0.0	0	0.0	0	0.0	0
	2015 - 16	0	0	0.0	0	0.0	0	0.0	0	0.0	0	0.0	0	0.0	0	0.0	0	0.0	0	0.0	0

Note: Each row represents a fiscal year, beginning with Summer term and ending with Spring.

Degrees Conferred by Race/Ethnicity

Fine Arts and Humanities
Fall 2012 - Fall 2016



Notes: 1) URM stands for Under-Represented Minority and includes American Indian or Alaska Native; Black or African-American; Hispanic / Latino race/ethnicity groups
 2) Individual URM groups, Native Hawaiian Pacific Islander, Two or More Races, and Other race/ethnicity categories left off this charts due to relatively low numbers

Degrees Conferred
by Gender

Fine Arts and Humanities
 Fall 2012 - Fall 2016

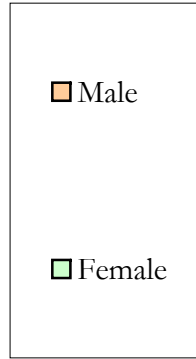
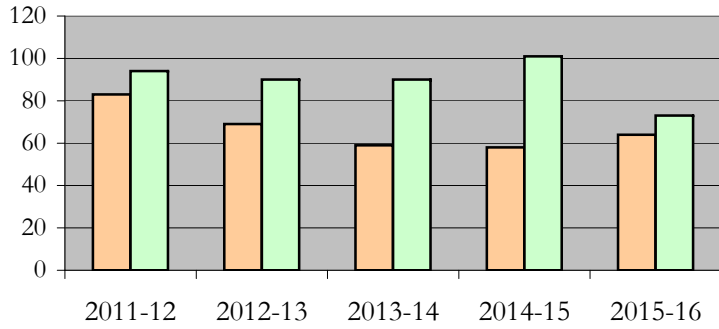
		Total	Male		Female		Not Reported
			Count	%	Count	%	
All	2011 - 12	177	83	46.9	94	53.1	0
	2012 - 13	160	69	43.1	90	56.3	1
	2013 - 14	149	59	39.6	90	60.4	0
	2014 - 15	159	58	36.5	101	63.5	0
	2015 - 16	138	64	46.4	73	52.9	1
Masters & IBHE Certificate	2011 - 12	160	77	48.1	83	51.9	0
	2012 - 13	129	57	44.2	71	55.0	1
	2013 - 14	124	49	39.5	75	60.5	0
	2014 - 15	127	47	37.0	80	63.0	0
	2015 - 16	104	49	47.1	54	51.9	1
Doctorate	2011 - 12	17	6	35.3	11	64.7	0
	2012 - 13	31	12	38.7	19	61.3	0
	2013 - 14	25	10	40.0	15	60.0	0
	2014 - 15	32	11	34.4	21	65.6	0
	2015 - 16	34	15	44.1	19	55.9	0
Campus Certificates	2011 - 12	0	0	0.0	0	0.0	0
	2012 - 13	0	0	0.0	0	0.0	0
	2013 - 14	0	0	0.0	0	0.0	0
	2014 - 15	0	0	0.0	0	0.0	0
	2015 - 16	0	0	0.0	0	0.0	0

Note: Each row represents a fiscal year, beginning with Summer term and ending with Spring.

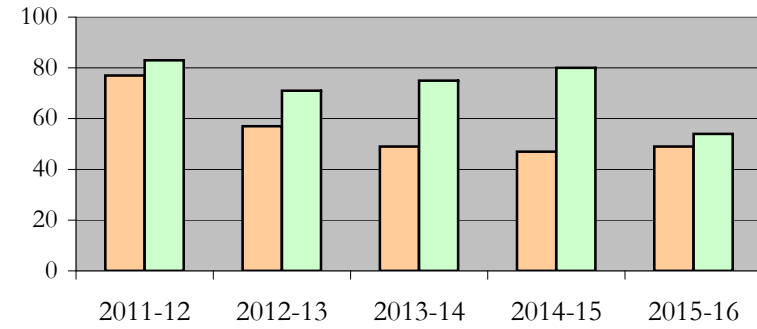
Degrees Conferred by Gender

Fine Arts and Humanities
Fall 2012 - Fall 2016

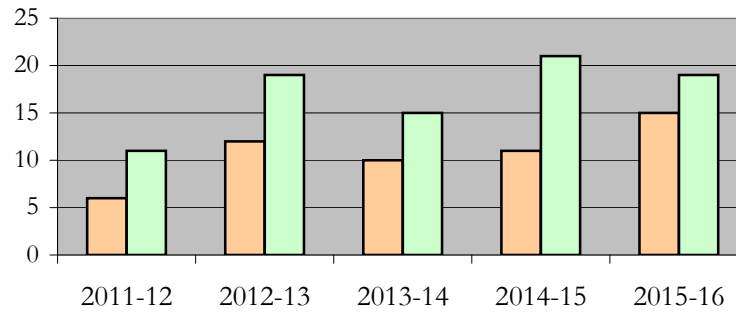
All Students



Masters & IBHE Certificate Students



Doctorate Students



Appendix A

Fine Arts and Humanities

Fall 2012 - Fall 2016

List of program codes included in this document

20FS0148MDES	20FS1715MFA
20FS0148MFA	20FS1757MAT
20FS0151MFA	20FS1900PHD
20FS0152MDES	20FS4095MFA
20FS0152MFA	20FS5046MS
20FS0249MARC	20FS5127MS
20FS0250MA	20FS5245MA
20FS0250PHD	20FS5256MFA
20FS0301MA	20FS5265MA
20FS0302PHD	20FS5293MA
20FS0304MA	21FS0148MDES
20FS0311MA	21FS0148MFA
20FS0311PHD	
20FS0332MA	
20FS0332PHD	
20FS0342MA	
20FS0342PHD	
20FS1044MA	
20FS1205MFA	
20FS1257MFA	
20FS1292MA	
20FS1292PHD	
20FS1312MA	
20FS1405MA	
20FS1684MA	
20FS1684PHD	

Notes: 1) Program codes are sorted by alphabetical order in column-wise fashion

2) Program codes highlighted in yellow did not have applications, enrollment, nor degrees conferred in the covered period