

**GRADUATE  
COLLEGE**



---

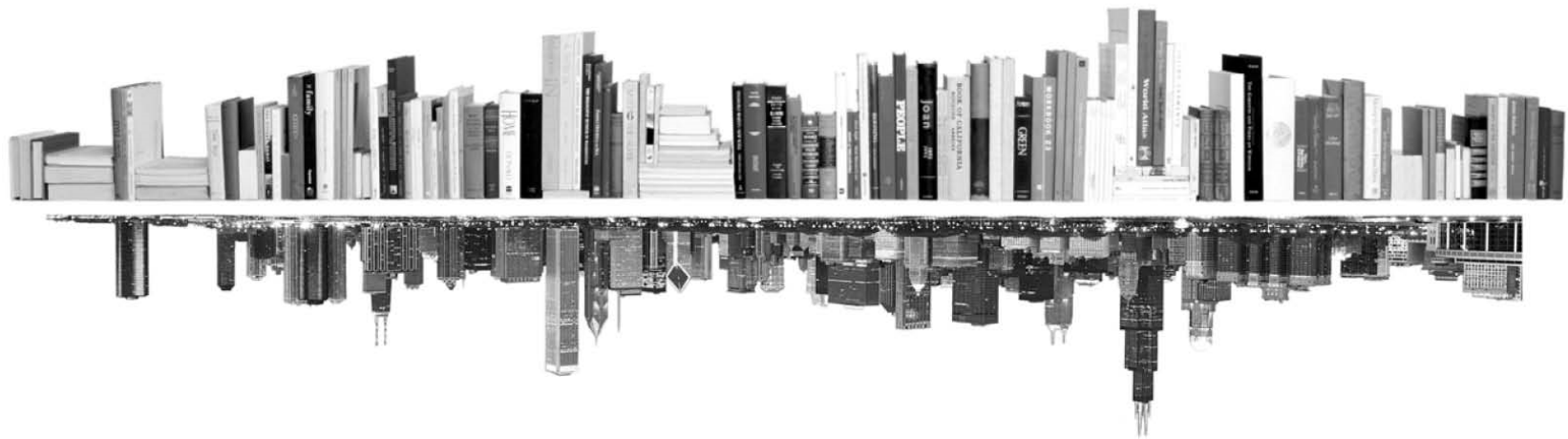
**ENROLLMENT MANAGEMENT REPORT**

**GRADUATE DIVISION PROFILE**

**ENGINEERING, MATHEMATICS, AND PHYSICAL SCIENCES**

**FALL 2016**

---





---

---

## INTRODUCTION – DIVISION PROFILE

---

---

The following profile report focuses on the Engineering, Mathematics, and Physical Sciences graduate program division (as defined in the Graduate College by-laws).

This profile report tracks students, not enrollments. This means that students with dual enrollments are reported only once – under their first program.

Kevin Monahan  
Director of Graduate Program Review and Information Systems  
Graduate College, University of Illinois at Chicago  
Voice: 312.413.0410 Email: kmonahan@uic.edu

---

---

## TABLE OF CONTENTS

---

---

MATRICULATION	
Diversity Pipeline	1
APPLICATIONS	
by Race/Ethnicity	2 – 5
ENROLLMENT	
by Race/Ethnicity	6 – 9
by Type, Time, & Gender	10 – 13
DEGREES	
by Race/Ethnicity	14 – 15
by Gender	16 – 17
List of academic programs included in this report	Appendix A

# Matriculation

## Diversity Pipeline

Engineering, Mathematics, and Physical Sciences

Fall 2012 - Fall 2016

	Fall Semester Year	Applied					Admitted					Non-URM Admitted to Applied Yield %	URM Admitted to Applied Yield %	New Enrollment					Non-URM Enrolled to Admitted Yield %	URM Enrolled to Admitted Yield %	Total Enrollment				
		Grand Total	Non-URM Total		URM Total		Grand Total	Non-URM Total		URM Total				Grand Total	Non-URM Total		URM Total				Grand Total	Non-URM Total		URM Total	
			Count	%	Count	%		Count	%	Count	%				Count	%	Count	%				Count	%	Count	%
All	2012	2958	2866	96.9%	92	3.1%	1381	1344	97.3%	37	2.7%	46.9%	40.2%	432	412	95.4%	20	4.6%	30.7%	54.1%	1427	1357	95.1%	70	4.9%
	2013	3909	3807	97.4%	102	2.6%	1429	1387	97.1%	42	2.9%	36.4%	41.2%	371	347	93.5%	24	6.5%	25.0%	57.1%	1440	1366	94.9%	74	5.1%
	2014	4404	4311	97.9%	93	2.1%	1706	1669	97.8%	37	2.2%	38.7%	39.8%	439	418	95.2%	21	4.8%	25.0%	56.8%	1481	1406	94.9%	75	5.1%
	2015	4606	4525	98.2%	81	1.8%	1974	1936	98.1%	38	1.9%	42.8%	46.9%	649	637	98.2%	12	1.8%	32.9%	31.6%	1850	1771	95.7%	79	4.3%
	2016	5138	5024	97.8%	114	2.2%	1689	1635	96.8%	54	3.2%	32.5%	47.4%	390	366	93.8%	24	6.2%	22.4%	44.4%	1760	1679	95.4%	81	4.6%
	Average	4203	4107	97.7%	96	2.3%	1636	1594	97.5%	42	2.5%	38.8%	43.2%	456	436	95.6%	20	4.4%	27.3%	48.6%	1592	1516	95.2%	76	4.8%
Masters & IBHE Certificate	2012	1841	1792	97.3%	49	2.7%	956	933	97.6%	23	2.4%	52.1%	46.9%	292	276	94.5%	16	5.5%	29.6%	69.6%	662	623	94.1%	39	5.9%
	2013	2752	2691	97.8%	61	2.2%	1034	1002	96.9%	32	3.1%	37.2%	52.5%	252	233	92.5%	19	7.5%	23.3%	59.4%	704	661	93.9%	43	6.1%
	2014	3201	3147	98.3%	54	1.7%	1296	1270	98.0%	26	2.0%	40.4%	48.1%	317	301	95.0%	16	5.0%	23.7%	61.5%	740	697	94.2%	43	5.8%
	2015	3492	3440	98.5%	52	1.5%	1607	1576	98.1%	31	1.9%	45.8%	59.6%	507	495	97.6%	12	2.4%	31.4%	38.7%	1052	1006	95.6%	46	4.4%
	2016	4025	3961	98.4%	64	1.6%	1353	1315	97.2%	38	2.8%	33.2%	59.4%	278	261	93.9%	17	6.1%	19.8%	44.7%	952	909	95.5%	43	4.5%
	Average	3062	3006	98.2%	56	1.8%	1249	1219	97.6%	30	2.4%	40.6%	53.6%	329	313	95.1%	16	4.9%	25.7%	53.3%	822	779	94.8%	43	5.2%
Doctorate	2012	1117	1074	96.2%	43	3.8%	425	411	96.7%	14	3.3%	38.3%	32.6%	140	136	97.1%	4	2.9%	33.1%	28.6%	765	734	95.9%	31	4.1%
	2013	1157	1116	96.5%	41	3.5%	395	385	97.5%	10	2.5%	34.5%	24.4%	119	114	95.8%	5	4.2%	29.6%	50.0%	736	705	95.8%	31	4.2%
	2014	1203	1164	96.8%	39	3.2%	410	399	97.3%	11	2.7%	34.3%	28.2%	122	117	95.9%	5	4.1%	29.3%	45.5%	741	709	95.7%	32	4.3%
	2015	1114	1085	97.4%	29	2.6%	367	360	98.1%	7	1.9%	33.2%	24.1%	142	142	100.0%	0	0.0%	39.4%	0.0%	798	765	95.9%	33	4.1%
	2016	1113	1063	95.5%	50	4.5%	336	320	95.2%	16	4.8%	30.1%	32.0%	112	105	93.8%	7	6.3%	32.8%	43.8%	808	770	95.3%	38	4.7%
	Average	1141	1100	96.5%	40	3.5%	387	375	97.0%	12	3.0%	34.1%	28.7%	127	123	96.7%	4	3.3%	32.7%	36.2%	770	737	95.7%	33	4.3%
Non-Degree & Campus Certificate	2012	0	0	0.0%	0	0.0%	0	0	0.0%	0	0.0%	0.0%	0.0%	0	0	0.0%	0	0.0%	0.0%	0.0%	0	0	0.0%	0	0.0%
	2013	0	0	0.0%	0	0.0%	0	0	0.0%	0	0.0%	0.0%	0.0%	0	0	0.0%	0	0.0%	0.0%	0.0%	0	0	0.0%	0	0.0%
	2014	0	0	0.0%	0	0.0%	0	0	0.0%	0	0.0%	0.0%	0.0%	0	0	0.0%	0	0.0%	0.0%	0.0%	0	0	0.0%	0	0.0%
	2015	0	0	0.0%	0	0.0%	0	0	0.0%	0	0.0%	0.0%	0.0%	0	0	0.0%	0	0.0%	0.0%	0.0%	0	0	0.0%	0	0.0%
	2016	0	0	0.0%	0	0.0%	0	0	0.0%	0	0.0%	0.0%	0.0%	0	0	0.0%	0	0.0%	0.0%	0.0%	0	0	0.0%	0	0.0%
	Average	0	0	0.0%	0	0.0%	0	0	0.0%	0	0.0%	0.0%	0.0%	0	0	0.0%	0	0.0%	0.0%	0.0%	0	0	0.0%	0	0.0%

**Note:** URM stands for Under-Represented Minority and includes American Indian or Alaska Native; Black or African-American; Hispanic / Latino race/ethnicity groups

# Applications - Total

## by Race/Ethnicity

Engineering, Mathematics, and Physical Sciences

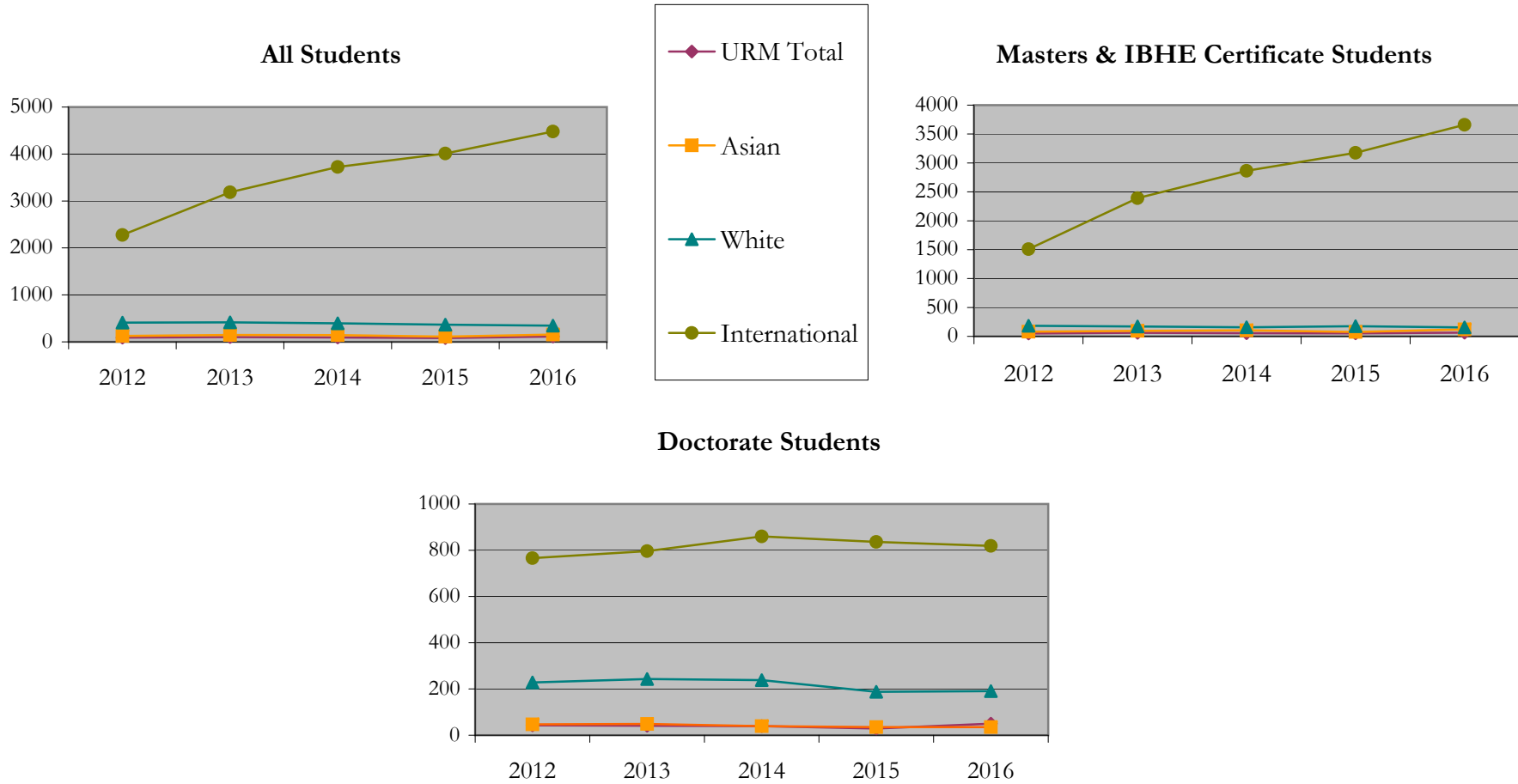
Fall 2012 - Fall 2016

		Total	Under Represented Minorities (URM)																Not Reported		
			American Indian or Alaska Native		Black or African American		Hispanic / Latino		URM Total		Asian		Native Hawaiian or Pacific Islander		White		Two or More Races			International	
			Count	%	Count	%	Count	%	Count	%	Count	%	Count	%	Count	%	Count	%		Count	%
All	2012	2959	0	0.0	31	1.0	61	2.1	92	3.1	127	4.3	1	0.0	411	13.9	18	0.6	2275	76.9	35
	2013	3909	1	0.0	38	1.0	63	1.6	102	2.6	145	3.7	0	0.0	415	10.6	23	0.6	3186	81.5	38
	2014	4404	3	0.1	37	0.8	53	1.2	93	2.1	143	3.2	0	0.0	394	8.9	18	0.4	3723	84.5	33
	2015	4606	2	0.0	29	0.6	50	1.1	81	1.8	111	2.4	1	0.0	365	7.9	14	0.3	4011	87.1	23
	2016	5138	1	0.0	48	0.9	65	1.3	114	2.2	156	3.0	0	0.0	346	6.7	16	0.3	4480	87.2	26
Masters & IBHE Certificate	2012	1842	0	0.0	18	1.0	31	1.7	49	2.7	80	4.3	0	0.0	183	9.9	8	0.4	1509	81.9	13
	2013	2752	1	0.0	23	0.8	37	1.3	61	2.2	96	3.5	0	0.0	172	6.3	11	0.4	2390	86.8	22
	2014	3201	1	0.0	24	0.7	29	0.9	54	1.7	104	3.2	0	0.0	156	4.9	8	0.2	2863	89.4	16
	2015	3492	2	0.1	17	0.5	33	0.9	52	1.5	76	2.2	0	0.0	177	5.1	6	0.2	3175	90.9	6
	2016	4025	0	0.0	35	0.9	29	0.7	64	1.6	121	3.0	0	0.0	155	3.9	11	0.3	3661	91.0	13
Doctorate	2012	1117	0	0.0	13	1.2	30	2.7	43	3.8	47	4.2	1	0.1	228	20.4	10	0.9	766	68.6	22
	2013	1157	0	0.0	15	1.3	26	2.2	41	3.5	49	4.2	0	0.0	243	21.0	12	1.0	796	68.8	16
	2014	1203	2	0.2	13	1.1	24	2.0	39	3.2	39	3.2	0	0.0	238	19.8	10	0.8	860	71.5	17
	2015	1114	0	0.0	12	1.1	17	1.5	29	2.6	35	3.1	1	0.1	188	16.9	8	0.7	836	75.0	17
	2016	1113	1	0.1	13	1.2	36	3.2	50	4.5	35	3.1	0	0.0	191	17.2	5	0.4	819	73.6	13
Non-Degree & Campus Certificate	2012	0	0	0.0	0	0.0	0	0.0	0	0.0	0	0.0	0	0.0	0	0.0	0	0.0	0	0.0	0
	2013	0	0	0.0	0	0.0	0	0.0	0	0.0	0	0.0	0	0.0	0	0.0	0	0.0	0	0.0	0
	2014	0	0	0.0	0	0.0	0	0.0	0	0.0	0	0.0	0	0.0	0	0.0	0	0.0	0	0.0	0
	2015	0	0	0.0	0	0.0	0	0.0	0	0.0	0	0.0	0	0.0	0	0.0	0	0.0	0	0.0	0
	2016	0	0	0.0	0	0.0	0	0.0	0	0.0	0	0.0	0	0.0	0	0.0	0	0.0	0	0.0	0

**Note:** URM stands for Under-Represented Minority and includes American Indian or Alaska Native; Black or African-American; Hispanic / Latino race/ethnicity groups

# Applications - Total by Race/Ethnicity

Engineering, Mathematics, and Physical Sciences  
Fall 2012 - Fall 2016



**Notes:** 1) URM stands for Under-Represented Minority and includes American Indian or Alaska Native; Black or African-American; Hispanic / Latino race/ethnicity groups  
2) Individual URM groups, Native Hawaiian Pacific Islander, Two or More Races, and Other race/ethnicity categories left off this charts due to relatively low numbers

# Applications - Admitted

## by Race/Ethnicity

Engineering, Mathematics, and Physical Sciences

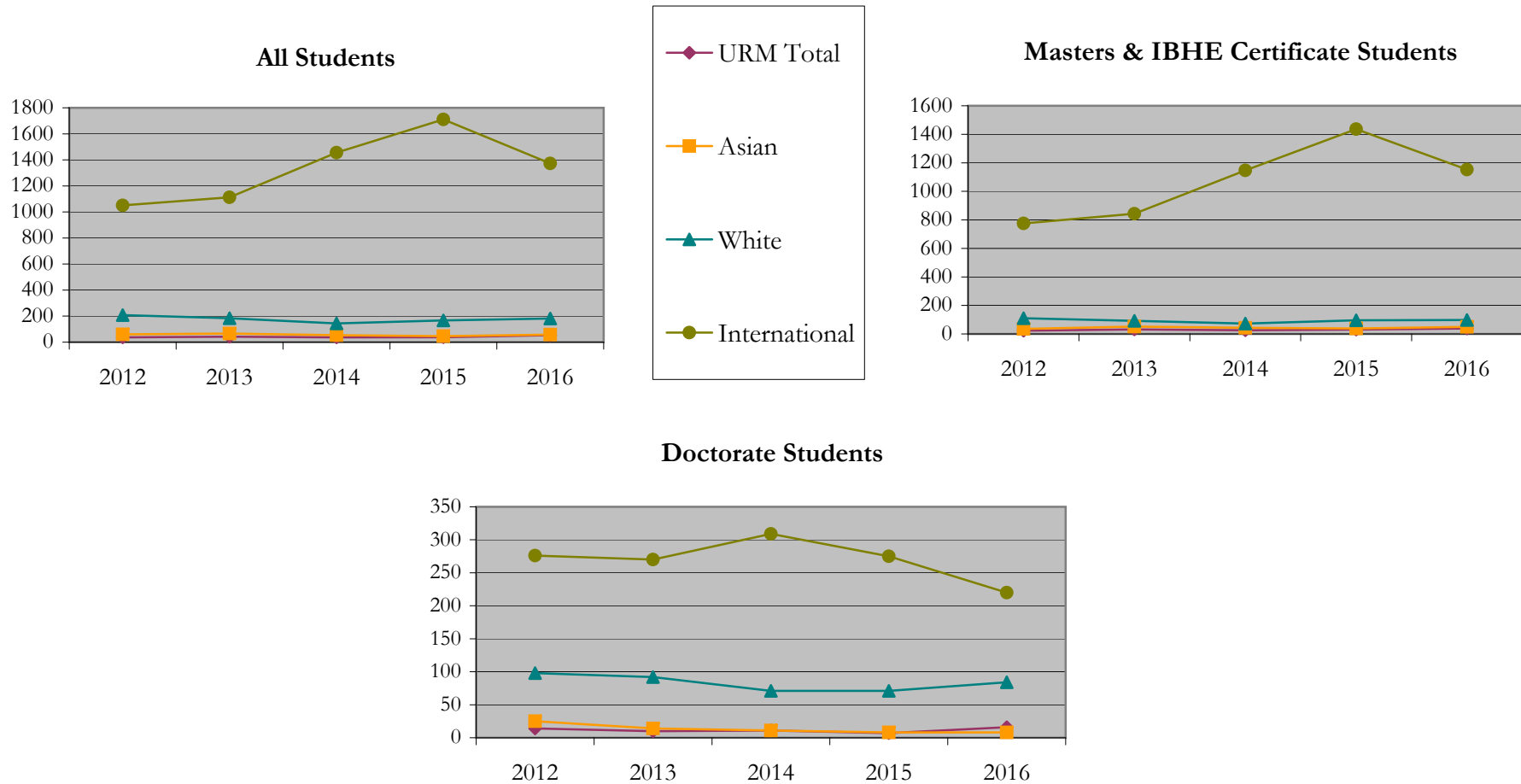
Fall 2012 - Fall 2016

		Total	Under Represented Minorities (URM)								Asian		Native Hawaiian or Pacific Islander		White		Two or More Races		International		Not Reported
			American Indian or Alaska Native		Black or African American		Hispanic / Latino		URM Total												
			Count	%	Count	%	Count	%	Count	%											
All	2012	1381	0	0.0	9	0.7	28	2.0	37	2.7	60	4.3	0	0.0	208	15.1	10	0.7	1051	76.1	15
	2013	1429	1	0.1	13	0.9	28	2.0	42	2.9	66	4.6	0	0.0	184	12.9	16	1.1	1113	77.9	8
	2014	1706	2	0.1	11	0.6	24	1.4	37	2.2	54	3.2	0	0.0	144	8.4	8	0.5	1456	85.3	7
	2015	1974	2	0.1	9	0.5	27	1.4	38	1.9	46	2.3	0	0.0	167	8.5	4	0.2	1711	86.7	8
	2016	1689	1	0.1	27	1.6	26	1.5	54	3.2	58	3.4	0	0.0	182	10.8	11	0.7	1373	81.3	11
Masters & IBHE Certificate	2012	956	0	0.0	6	0.6	17	1.8	23	2.4	35	3.7	0	0.0	110	11.5	5	0.5	775	81.1	8
	2013	1034	1	0.1	9	0.9	22	2.1	32	3.1	52	5.0	0	0.0	92	8.9	9	0.9	843	81.5	6
	2014	1296	1	0.1	9	0.7	16	1.2	26	2.0	43	3.3	0	0.0	73	5.6	4	0.3	1147	88.5	3
	2015	1607	2	0.1	8	0.5	21	1.3	31	1.9	38	2.4	0	0.0	96	6.0	2	0.1	1436	89.4	4
	2016	1353	0	0.0	21	1.6	17	1.3	38	2.8	50	3.7	0	0.0	98	7.2	9	0.7	1153	85.2	5
Doctorate	2012	425	0	0.0	3	0.7	11	2.6	14	3.3	25	5.9	0	0.0	98	23.1	5	1.2	276	64.9	7
	2013	395	0	0.0	4	1.0	6	1.5	10	2.5	14	3.5	0	0.0	92	23.3	7	1.8	270	68.4	2
	2014	410	1	0.2	2	0.5	8	2.0	11	2.7	11	2.7	0	0.0	71	17.3	4	1.0	309	75.4	4
	2015	367	0	0.0	1	0.3	6	1.6	7	1.9	8	2.2	0	0.0	71	19.3	2	0.5	275	74.9	4
	2016	336	1	0.3	6	1.8	9	2.7	16	4.8	8	2.4	0	0.0	84	25.0	2	0.6	220	65.5	6
Non-Degree & Campus Certificate	2012	0	0	0.0	0	0.0	0	0.0	0	0.0	0	0.0	0	0.0	0	0.0	0	0.0	0	0.0	0
	2013	0	0	0.0	0	0.0	0	0.0	0	0.0	0	0.0	0	0.0	0	0.0	0	0.0	0	0.0	0
	2014	0	0	0.0	0	0.0	0	0.0	0	0.0	0	0.0	0	0.0	0	0.0	0	0.0	0	0.0	0
	2015	0	0	0.0	0	0.0	0	0.0	0	0.0	0	0.0	0	0.0	0	0.0	0	0.0	0	0.0	0
	2016	0	0	0.0	0	0.0	0	0.0	0	0.0	0	0.0	0	0.0	0	0.0	0	0.0	0	0.0	0

**Note:** URM stands for Under-Represented Minority and includes American Indian or Alaska Native; Black or African-American; Hispanic / Latino race/ethnicity groups

# Applications - Admitted by Race/Ethnicity

Engineering, Mathematics, and Physical Sciences  
Fall 2012 - Fall 2016



**Notes:** 1) URM stands for Under-Represented Minority and includes American Indian or Alaska Native; Black or African-American; Hispanic / Latino race/ethnicity groups

2) Individual URM groups, Native Hawaiian Pacific Islander, Two or More Races, and Other race/ethnicity categories left off this charts due to relatively low numbers

**Enrollment - New  
by Race/Ethnicity**

Engineering, Mathematics, and Physical Sciences  
Fall 2012 - Fall 2016

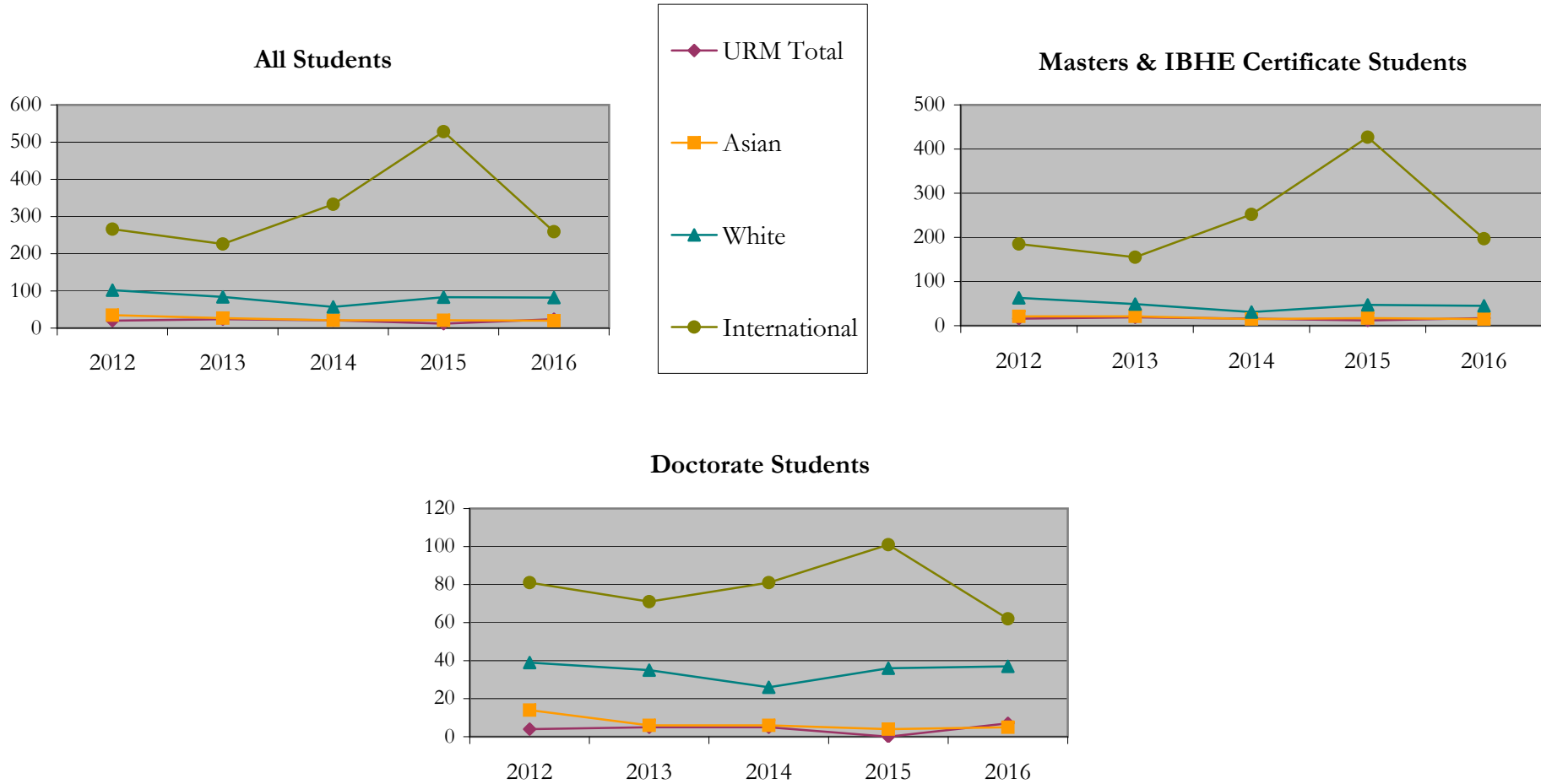
		Total	Under Represented Minorities (URM)								Asian		Native Hawaiian or Pacific Islander		White		Two or More Races		International		Not Reported
			American Indian or Alaska Native		Black or African American		Hispanic / Latino		URM Total												
			Count	%	Count	%	Count	%	Count	%											
All	2012	432	0	0.0	5	1.2	15	3.5	20	4.6	35	8.1	0	0.0	102	23.6	1	0.2	266	61.6	8
	2013	371	1	0.3	7	1.9	16	4.3	24	6.5	27	7.3	0	0.0	84	22.6	6	1.6	226	60.9	4
	2014	439	0	0.0	6	1.4	15	3.4	21	4.8	21	4.8	0	0.0	57	13.0	3	0.7	333	75.9	4
	2015	649	0	0.0	2	0.3	10	1.5	12	1.8	21	3.2	0	0.0	83	12.8	2	0.3	528	81.4	3
	2016	390	1	0.3	12	3.1	11	2.8	24	6.2	20	5.1	0	0.0	82	21.0	5	1.3	259	66.4	0
Masters & IBHE Certificate	2012	292	0	0.0	4	1.4	12	4.1	16	5.5	21	7.2	0	0.0	63	21.6	1	0.3	185	63.4	6
	2013	252	1	0.4	5	2.0	13	5.2	19	7.5	21	8.3	0	0.0	49	19.4	5	2.0	155	61.5	3
	2014	317	0	0.0	5	1.6	11	3.5	16	5.0	15	4.7	0	0.0	31	9.8	1	0.3	252	79.5	2
	2015	507	0	0.0	2	0.4	10	2.0	12	2.4	17	3.4	0	0.0	47	9.3	1	0.2	427	84.2	3
	2016	278	0	0.0	9	3.2	8	2.9	17	6.1	15	5.4	0	0.0	45	16.2	4	1.4	197	70.9	0
Doctorate	2012	140	0	0.0	1	0.7	3	2.1	4	2.9	14	10.0	0	0.0	39	27.9	0	0.0	81	57.9	2
	2013	119	0	0.0	2	1.7	3	2.5	5	4.2	6	5.0	0	0.0	35	29.4	1	0.8	71	59.7	1
	2014	122	0	0.0	1	0.8	4	3.3	5	4.1	6	4.9	0	0.0	26	21.3	2	1.6	81	66.4	2
	2015	142	0	0.0	0	0.0	0	0.0	0	0.0	4	2.8	0	0.0	36	25.4	1	0.7	101	71.1	0
	2016	112	1	0.9	3	2.7	3	2.7	7	6.3	5	4.5	0	0.0	37	33.0	1	0.9	62	55.4	0
Non-Degree & Campus Certificate	2012	0	0	0.0	0	0.0	0	0.0	0	0.0	0	0.0	0	0.0	0	0.0	0	0.0	0	0.0	0
	2013	0	0	0.0	0	0.0	0	0.0	0	0.0	0	0.0	0	0.0	0	0.0	0	0.0	0	0.0	0
	2014	0	0	0.0	0	0.0	0	0.0	0	0.0	0	0.0	0	0.0	0	0.0	0	0.0	0	0.0	0
	2015	0	0	0.0	0	0.0	0	0.0	0	0.0	0	0.0	0	0.0	0	0.0	0	0.0	0	0.0	0
	2016	0	0	0.0	0	0.0	0	0.0	0	0.0	0	0.0	0	0.0	0	0.0	0	0.0	0	0.0	0

**Note:** URM stands for Under-Represented Minority and includes American Indian or Alaska Native; Black or African-American; Hispanic / Latino race/ethnicity groups



# Enrollment - New by Race/Ethnicity

Engineering, Mathematics, and Physical Sciences  
Fall 2012 - Fall 2016



**Notes:** 1) URM stands for Under-Represented Minority and includes American Indian or Alaska Native; Black or African-American; Hispanic / Latino race/ethnicity groups  
2) Individual URM groups, Native Hawaiian Pacific Islander, Two or More Races, and Other race/ethnicity categories left off this charts due to relatively low numbers

**Enrollment - Total  
by Race/Ethnicity**

Engineering, Mathematics, and Physical Sciences

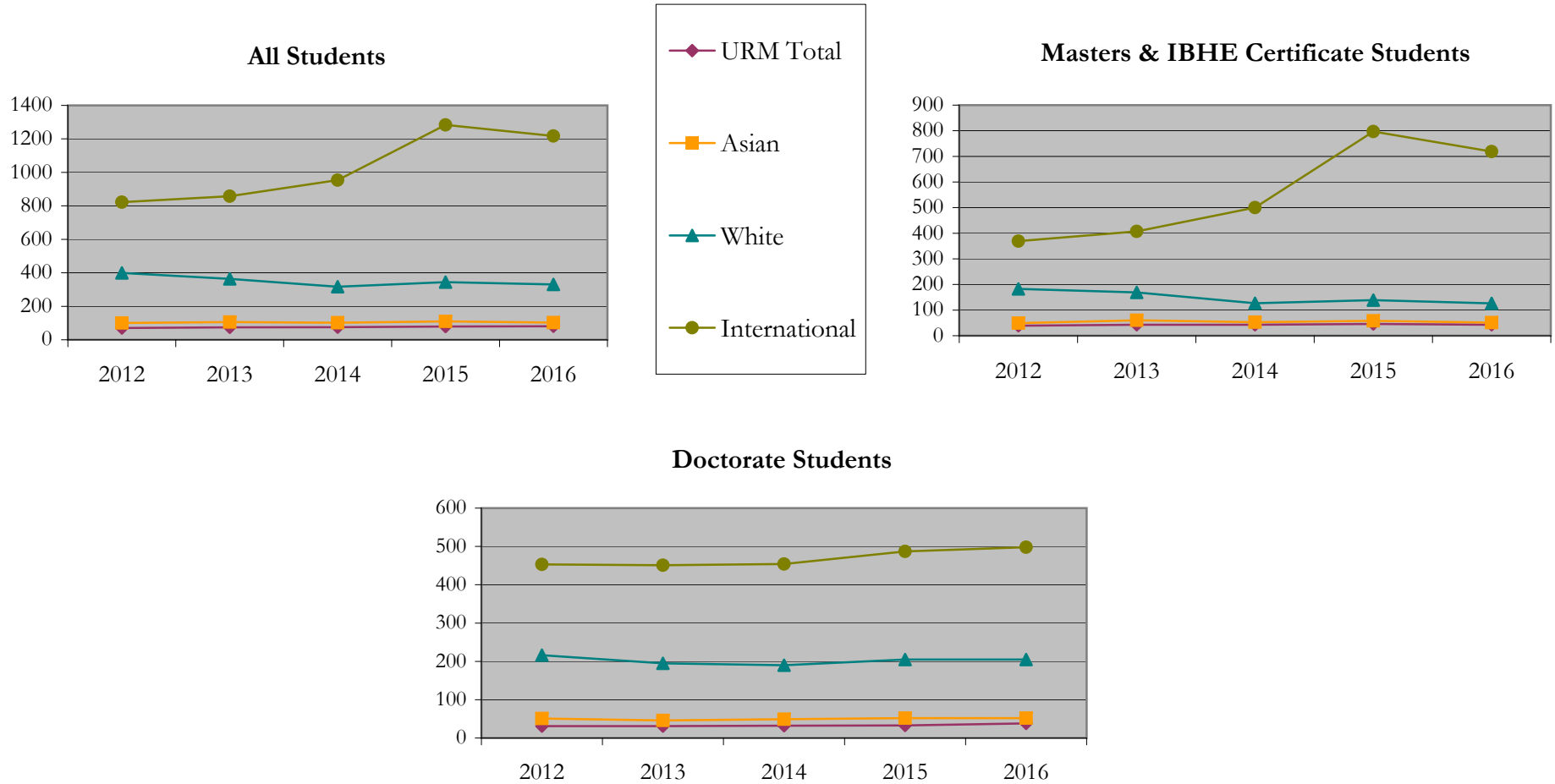
Fall 2012 - Fall 2016

		Total	Under Represented Minorities (URM)								Asian		Native Hawaiian or Pacific Islander		White		Two or More Races		International		Not Reported
			American Indian or Alaska Native		Black or African American		Hispanic / Latino		URM Total												
			Count	%	Count	%	Count	%	Count	%											
All	2012	1427	0	0.0	22	1.5	48	3.4	70	4.9	100	7.0	0	0.0	399	28.0	7	0.5	822	57.6	29
	2013	1440	2	0.1	21	1.5	51	3.5	74	5.1	106	7.4	0	0.0	364	25.3	11	0.8	858	59.6	27
	2014	1481	2	0.1	21	1.4	52	3.5	75	5.1	102	6.9	0	0.0	317	21.4	12	0.8	954	64.4	21
	2015	1850	1	0.1	23	1.2	55	3.0	79	4.3	110	5.9	0	0.0	344	18.6	13	0.7	1284	69.4	20
	2016	1760	2	0.1	30	1.7	49	2.8	81	4.6	103	5.9	0	0.0	331	18.8	16	0.9	1217	69.1	12
Masters & IBHE Certificate	2012	662	0	0.0	14	2.1	25	3.8	39	5.9	49	7.4	0	0.0	183	27.6	3	0.5	369	55.7	19
	2013	704	2	0.3	13	1.8	28	4.0	43	6.1	60	8.5	0	0.0	169	24.0	7	1.0	407	57.8	18
	2014	740	2	0.3	14	1.9	27	3.6	43	5.8	53	7.2	0	0.0	127	17.2	6	0.8	500	67.6	11
	2015	1052	1	0.1	14	1.3	31	2.9	46	4.4	58	5.5	0	0.0	139	13.2	4	0.4	797	75.8	8
	2016	952	1	0.1	16	1.7	26	2.7	43	4.5	51	5.4	0	0.0	126	13.2	8	0.8	719	75.5	5
Doctorate	2012	765	0	0.0	8	1.0	23	3.0	31	4.1	51	6.7	0	0.0	216	28.2	4	0.5	453	59.2	10
	2013	736	0	0.0	8	1.1	23	3.1	31	4.2	46	6.3	0	0.0	195	26.5	4	0.5	451	61.3	9
	2014	741	0	0.0	7	0.9	25	3.4	32	4.3	49	6.6	0	0.0	190	25.6	6	0.8	454	61.3	10
	2015	798	0	0.0	9	1.1	24	3.0	33	4.1	52	6.5	0	0.0	205	25.7	9	1.1	487	61.0	12
	2016	808	1	0.1	14	1.7	23	2.8	38	4.7	52	6.4	0	0.0	205	25.4	8	1.0	498	61.6	7
Non-Degree & Campus Certificate	2012	0	0	0.0	0	0.0	0	0.0	0	0.0	0	0.0	0	0.0	0	0.0	0	0.0	0	0.0	0
	2013	0	0	0.0	0	0.0	0	0.0	0	0.0	0	0.0	0	0.0	0	0.0	0	0.0	0	0.0	0
	2014	0	0	0.0	0	0.0	0	0.0	0	0.0	0	0.0	0	0.0	0	0.0	0	0.0	0	0.0	0
	2015	0	0	0.0	0	0.0	0	0.0	0	0.0	0	0.0	0	0.0	0	0.0	0	0.0	0	0.0	0
	2016	0	0	0.0	0	0.0	0	0.0	0	0.0	0	0.0	0	0.0	0	0.0	0	0.0	0	0.0	0

**Note:** URM stands for Under-Represented Minority and includes American Indian or Alaska Native; Black or African-American; Hispanic / Latino race/ethnicity groups

# Enrollment - Total by Race/Ethnicity

Engineering, Mathematics, and Physical Sciences  
Fall 2012 - Fall 2016



**Notes:** 1) URM stands for Under-Represented Minority and includes American Indian or Alaska Native; Black or African-American; Hispanic / Latino race/ethnicity groups  
2) Individual URM groups, Native Hawaiian Pacific Islander, Two or More Races, and Other race/ethnicity categories left off this charts due to relatively low numbers

## Enrollment

### by Student Type, Enrollment Time, and Gender

Engineering, Mathematics, and Physical Sciences

Fall 2012 - Fall 2016

		Total	New		Continuing		Male		Female		Gender Not Reported	Part-time		Full-time	
			Count	%	Count	%	Count	%	Count	%		Count	%	Count	%
All	2012	1427	432	30.3	995	69.7	1028	72.0	398	27.9	1	282	19.8	1145	80.2
	2013	1440	371	25.8	1069	74.2	1033	71.7	407	28.3	0	257	17.8	1183	82.2
	2014	1481	439	29.6	1042	70.4	1053	71.1	426	28.8	2	220	14.9	1261	85.1
	2015	1850	649	35.1	1201	64.9	1342	72.5	506	27.4	2	269	14.5	1581	85.5
	2016	1760	390	22.2	1370	77.8	1291	73.4	468	26.6	1	241	13.7	1519	86.3
Masters & IBHE Certificate	2012	662	292	44.1	370	55.9	509	76.9	152	23.0	1	206	31.1	456	68.9
	2013	704	252	35.8	452	64.2	533	75.7	171	24.3	0	200	28.4	504	71.6
	2014	740	317	42.8	423	57.2	546	73.8	193	26.1	1	159	21.5	581	78.5
	2015	1052	507	48.2	545	51.8	786	74.7	265	25.2	1	200	19.0	852	81.0
	2016	952	278	29.2	674	70.8	731	76.8	220	23.1	1	167	17.5	785	82.5
Doctorate	2012	765	140	18.3	625	81.7	519	67.8	246	32.2	0	76	9.9	689	90.1
	2013	736	119	16.2	617	83.8	500	67.9	236	32.1	0	57	7.7	679	92.3
	2014	741	122	16.5	619	83.5	507	68.4	233	31.4	1	61	8.2	680	91.8
	2015	798	142	17.8	656	82.2	556	69.7	241	30.2	1	69	8.6	729	91.4
	2016	808	112	13.9	696	86.1	560	69.3	248	30.7	0	74	9.2	734	90.8
Non-Degree & Campus Certificate	2012	0	0	0.0	0	0.0	0	0.0	0	0.0	0	0	0.0	0	0.0
	2013	0	0	0.0	0	0.0	0	0.0	0	0.0	0	0	0.0	0	0.0
	2014	0	0	0.0	0	0.0	0	0.0	0	0.0	0	0	0.0	0	0.0
	2015	0	0	0.0	0	0.0	0	0.0	0	0.0	0	0	0.0	0	0.0
	2016	0	0	0.0	0	0.0	0	0.0	0	0.0	0	0	0.0	0	0.0

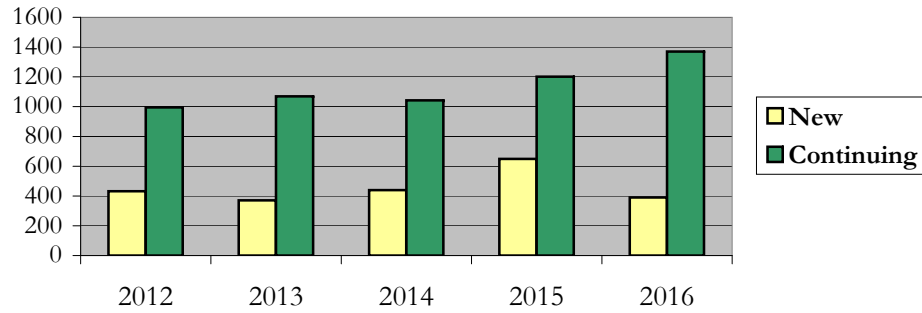
# Enrollment

## by Student Type, Enrollment Time, and Gender (All Students)

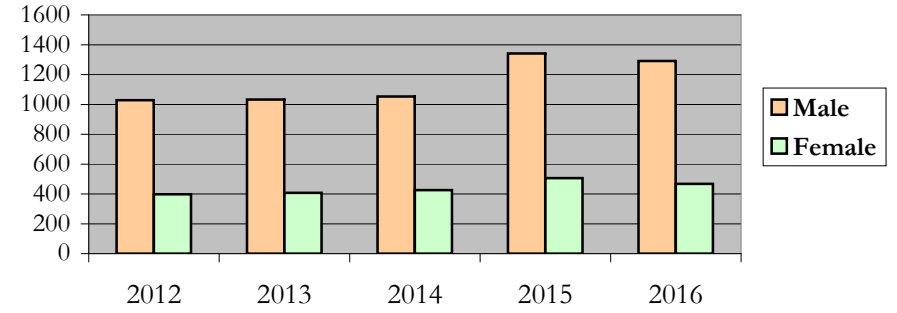
Engineering, Mathematics, and Physical Sciences

Fall 2012 - Fall 2016

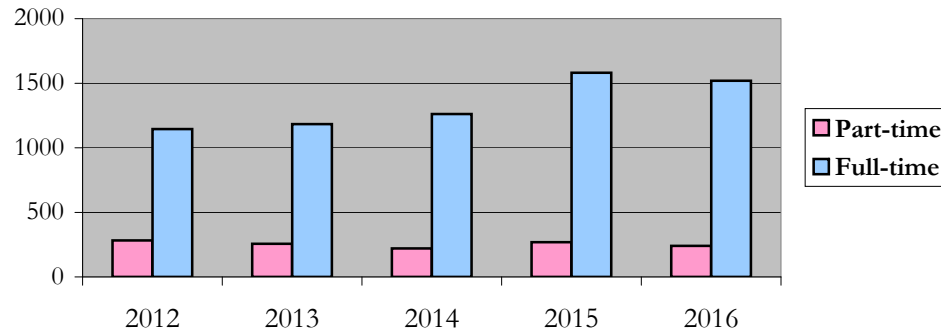
### New and Continuing Enrollment



### Enrollment by Gender



### Enrollment by Student Enrollment Time



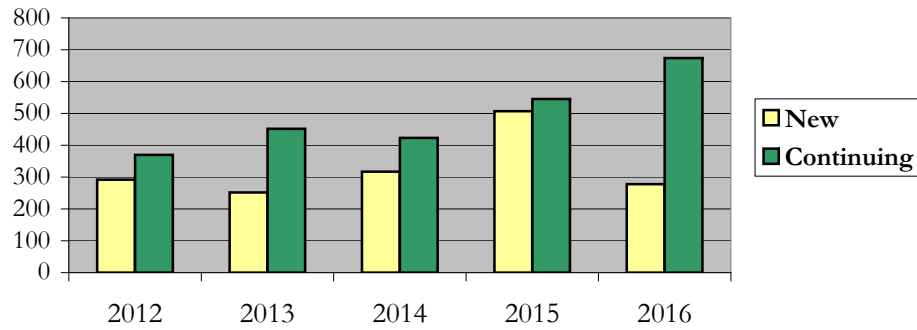
## Enrollment

### by Student Type, Enrollment Time, and Gender (Master's Students)

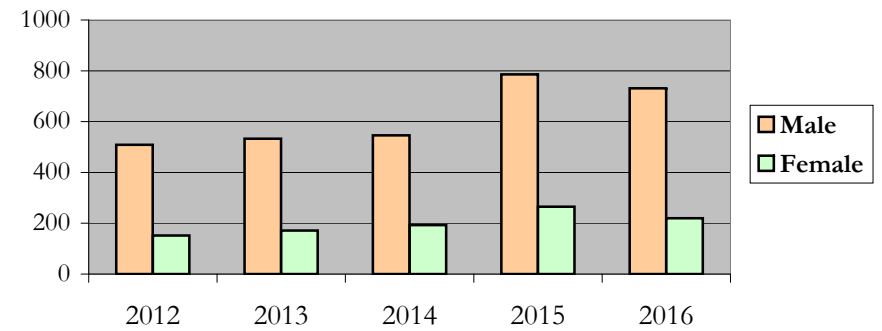
Engineering, Mathematics, and Physical Sciences

Fall 2012 - Fall 2016

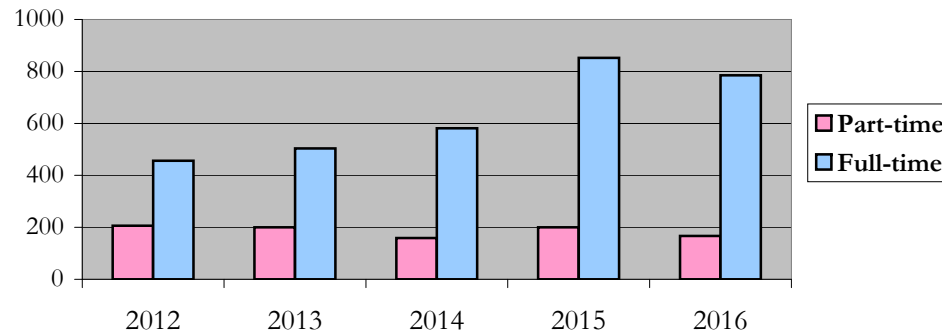
#### New and Continuing Enrollment



#### Enrollment by Gender



#### Enrollment by Student Enrollment Time



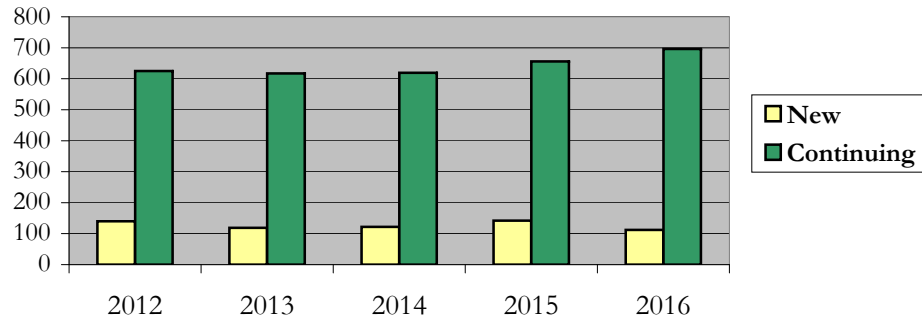
# Enrollment

## by Student Type, Enrollment Time, and Gender (Doctorate Students)

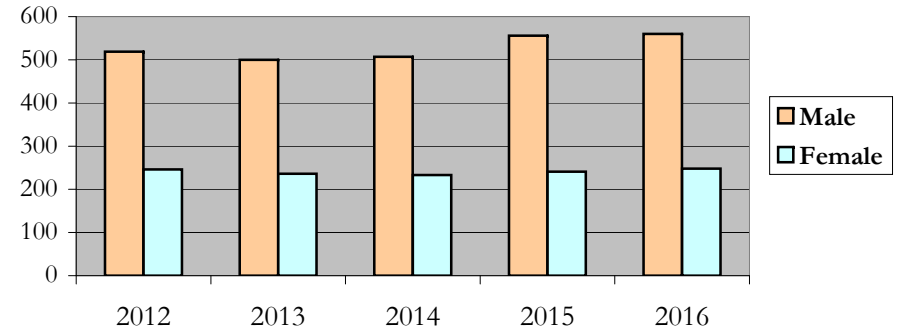
Engineering, Mathematics, and Physical Sciences

Fall 2012 - Fall 2016

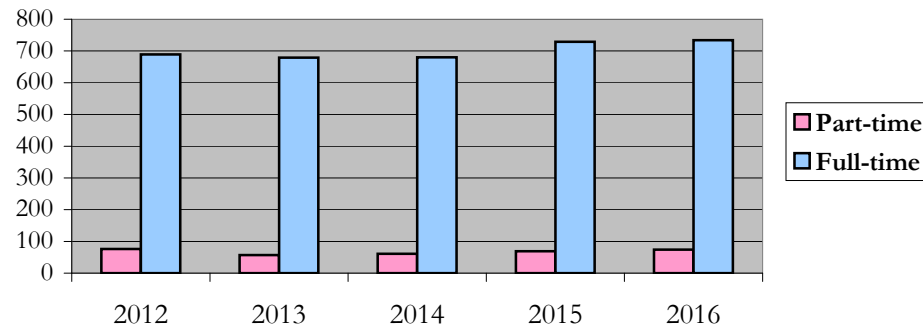
### New and Continuing Enrollment



### Enrollment by Gender



### Enrollment by Student Enrollment Time



# Degrees Conferred by Race/Ethnicity

Engineering, Mathematics, and Physical Sciences

Fall 2012 - Fall 2016

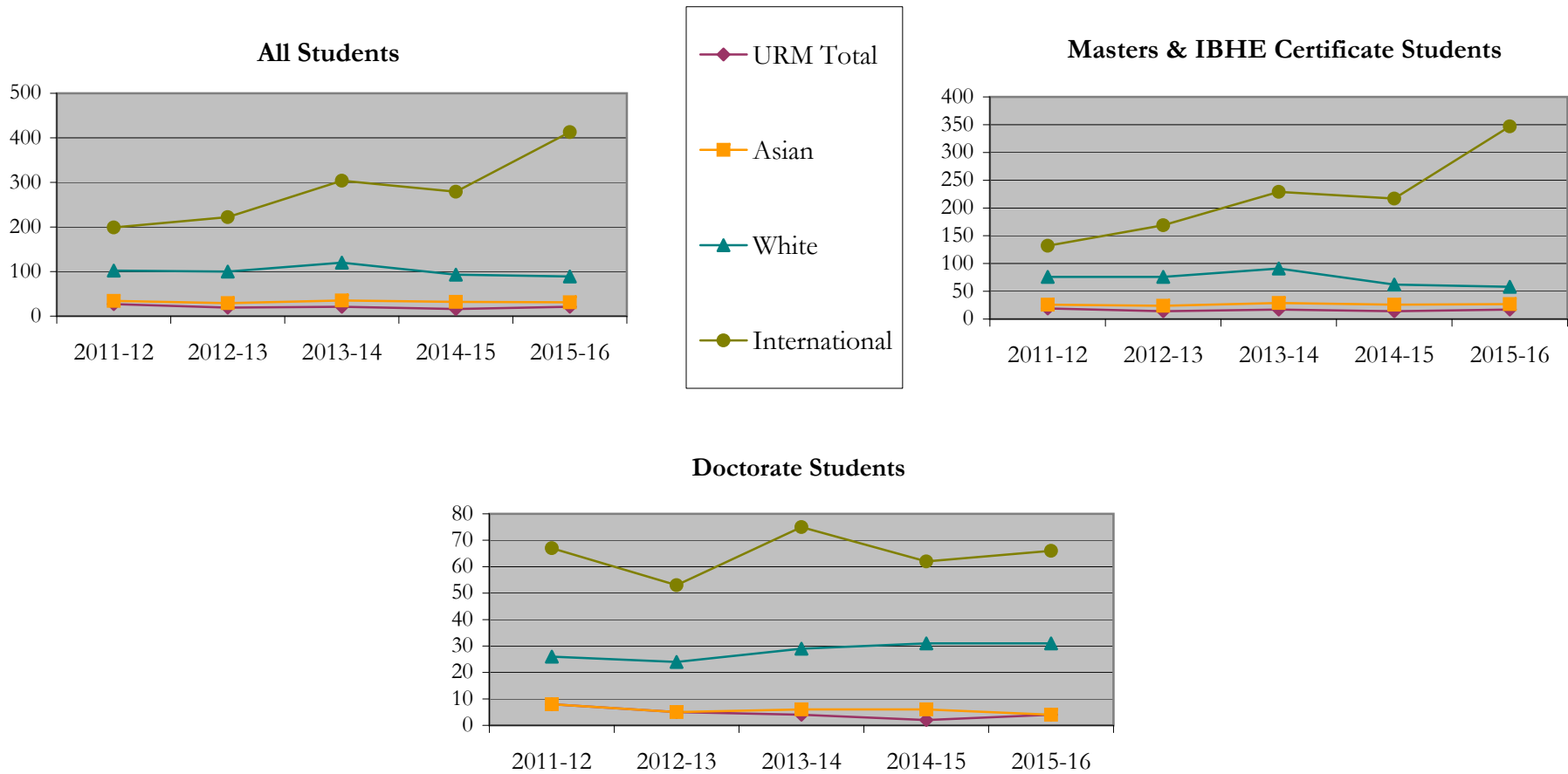
		Total	Under Represented Minorities (URM)								Asian	Native Hawaiian or Pacific Islander		White		Two or More Races		International		Not Reported	
			American Indian or Alaska Native		Black or African American		Hispanic / Latino		URM Total			Count	%	Count	%	Count	%	Count	%	Count	%
			Count	%	Count	%	Count	%	Count	%											
All	2011 - 12	371	0	0.0	12	3.2	15	4.0	27	7.3	34	9.2	1	0.3	102	27.5	1	0.3	199	53.6	7
	2012 - 13	381	0	0.0	7	1.8	12	3.1	19	5.0	29	7.6	0	0.0	100	26.2	2	0.5	222	58.3	9
	2013 - 14	491	0	0.0	8	1.6	13	2.6	21	4.3	35	7.1	0	0.0	120	24.4	4	0.8	304	61.9	7
	2014 - 15	429	0	0.0	6	1.4	10	2.3	16	3.7	32	7.5	0	0.0	93	21.7	3	0.7	279	65.0	6
	2015 - 16	561	0	0.0	6	1.1	15	2.7	21	3.7	31	5.5	0	0.0	89	15.9	2	0.4	413	73.6	5
Masters & IBHE Certificate	2011 - 12	262	0	0.0	8	3.1	11	4.2	19	7.3	26	9.9	1	0.4	76	29.0	1	0.4	132	50.4	7
	2012 - 13	291	0	0.0	5	1.7	9	3.1	14	4.8	24	8.2	0	0.0	76	26.1	2	0.7	169	58.1	6
	2013 - 14	376	0	0.0	5	1.3	12	3.2	17	4.5	29	7.7	0	0.0	91	24.2	3	0.8	229	60.9	7
	2014 - 15	328	0	0.0	5	1.5	9	2.7	14	4.3	26	7.9	0	0.0	62	18.9	3	0.9	217	66.2	6
	2015 - 16	455	0	0.0	5	1.1	12	2.6	17	3.7	27	5.9	0	0.0	58	12.7	2	0.4	347	76.3	4
Doctorate	2011 - 12	109	0	0.0	4	3.7	4	3.7	8	7.3	8	7.3	0	0.0	26	23.9	0	0.0	67	61.5	0
	2012 - 13	90	0	0.0	2	2.2	3	3.3	5	5.6	5	5.6	0	0.0	24	26.7	0	0.0	53	58.9	3
	2013 - 14	115	0	0.0	3	2.6	1	0.9	4	3.5	6	5.2	0	0.0	29	25.2	1	0.9	75	65.2	0
	2014 - 15	101	0	0.0	1	1.0	1	1.0	2	2.0	6	5.9	0	0.0	31	30.7	0	0.0	62	61.4	0
	2015 - 16	106	0	0.0	1	0.9	3	2.8	4	3.8	4	3.8	0	0.0	31	29.2	0	0.0	66	62.3	1
Non-Degree & Campus Certificate	2011 - 12	0	0	0.0	0	0.0	0	0.0	0	0.0	0	0.0	0	0.0	0	0.0	0	0.0	0	0.0	0
	2012 - 13	0	0	0.0	0	0.0	0	0.0	0	0.0	0	0.0	0	0.0	0	0.0	0	0.0	0	0.0	0
	2013 - 14	0	0	0.0	0	0.0	0	0.0	0	0.0	0	0.0	0	0.0	0	0.0	0	0.0	0	0.0	0
	2014 - 15	0	0	0.0	0	0.0	0	0.0	0	0.0	0	0.0	0	0.0	0	0.0	0	0.0	0	0.0	0
	2015 - 16	0	0	0.0	0	0.0	0	0.0	0	0.0	0	0.0	0	0.0	0	0.0	0	0.0	0	0.0	0

**Note:** Each row represents a fiscal year, beginning with Summer term and ending with Spring.



# Degrees Conferred by Race/Ethnicity

Engineering, Mathematics, and Physical Sciences  
Fall 2012 - Fall 2016



**Notes:** 1) URM stands for Under-Represented Minority and includes American Indian or Alaska Native; Black or African-American; Hispanic / Latino race/ethnicity groups  
 2) Individual URM groups, Native Hawaiian Pacific Islander, Two or More Races, and Other race/ethnicity categories left off this charts due to relatively low numbers

## Degrees Conferred

### by Gender

Engineering, Mathematics, and Physical Sciences

Fall 2012 - Fall 2016

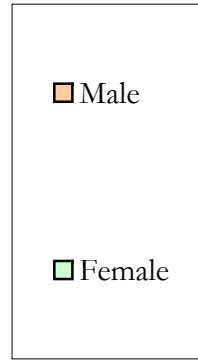
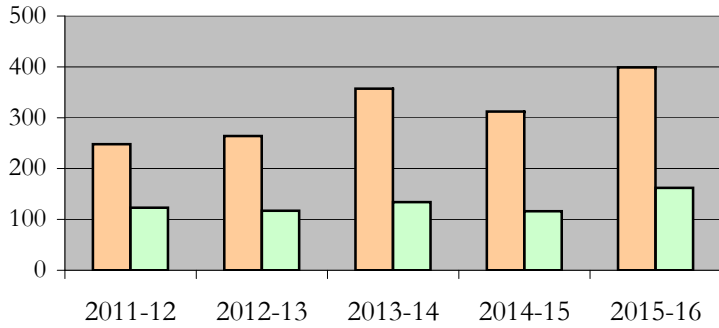
		Total	Male		Female		Not Reported
			Count	%	Count	%	
All	2011 - 12	371	248	66.8	123	33.2	0
	2012 - 13	381	264	69.3	117	30.7	0
	2013 - 14	491	357	72.7	134	27.3	0
	2014 - 15	429	312	72.7	116	27.0	1
	2015 - 16	561	399	71.1	162	28.9	0
Masters & IBHE Certificate	2011 - 12	262	169	64.5	93	35.5	0
	2012 - 13	291	208	71.5	83	28.5	0
	2013 - 14	376	281	74.7	95	25.3	0
	2014 - 15	328	241	73.5	86	26.2	1
	2015 - 16	455	330	72.5	125	27.5	0
Doctorate	2011 - 12	109	79	72.5	30	27.5	0
	2012 - 13	90	56	62.2	34	37.8	0
	2013 - 14	115	76	66.1	39	33.9	0
	2014 - 15	101	71	70.3	30	29.7	0
	2015 - 16	106	69	65.1	37	34.9	0
Campus Certificates	2011 - 12	0	0	0.0	0	0.0	0
	2012 - 13	0	0	0.0	0	0.0	0
	2013 - 14	0	0	0.0	0	0.0	0
	2014 - 15	0	0	0.0	0	0.0	0
	2015 - 16	0	0	0.0	0	0.0	0

Note: Each row represents a fiscal year, beginning with Summer term and ending with Spring.

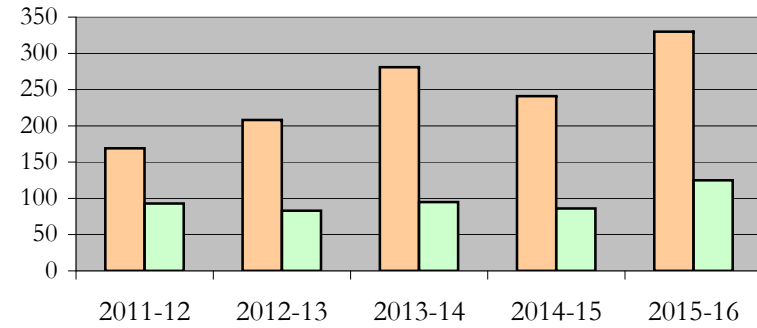
# Degrees Conferred by Gender

Engineering, Mathematics, and Physical Sciences  
Fall 2012 - Fall 2016

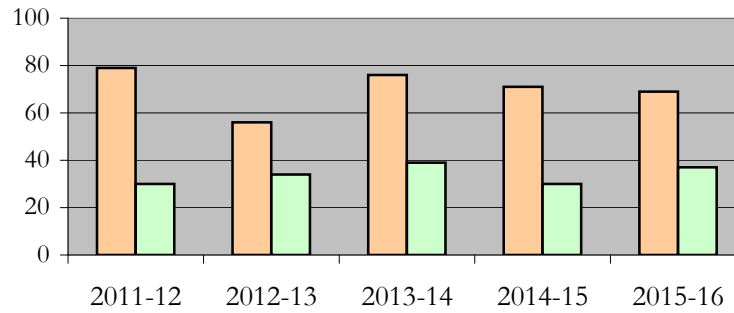
### All Students



### Masters & IBHE Certificate Students



### Doctorate Students



## **Appendix A**

Engineering, Mathematics, and Physical Sciences

Fall 2012 - Fall 2016

### **List of program codes included in this document**

20FQ1211MENU	20FS1434PHD
20FS0112MS	20FS1439MS
20FS0112PHD	20FS1454MS
20FS0127MS	20FS1454PHD
20FS0133MS	20FS1901DA
20FS0133PHD	20FS1909MS
20FS0240MS	20FS1909PHD
20FS0240PHD	20FS5085MEE
20FS0290MST	21FS0112MS
20FS0300MS	21FS0127MS
20FS0300PHD	21FS0133MS
20FS0335MS	21FS1200MS
20FS0335PHD	
20FS0408MS	
20FS0408PHD	
20FS0439MA	
20FS0439MS	
20FS0439PHD	
20FS1174MS	
20FS1174PHD	
20FS1200MS	
20FS1200PHD	
20FS1211MENU	
20FS1290PHD	
20FS1338PHD	
20FS1434MS	

**Notes:** 1) Program codes are sorted by alphabetical order in column-wise fashion

2) Program codes highlighted in yellow did not have applications, enrollment, nor degrees conferred in the covered period