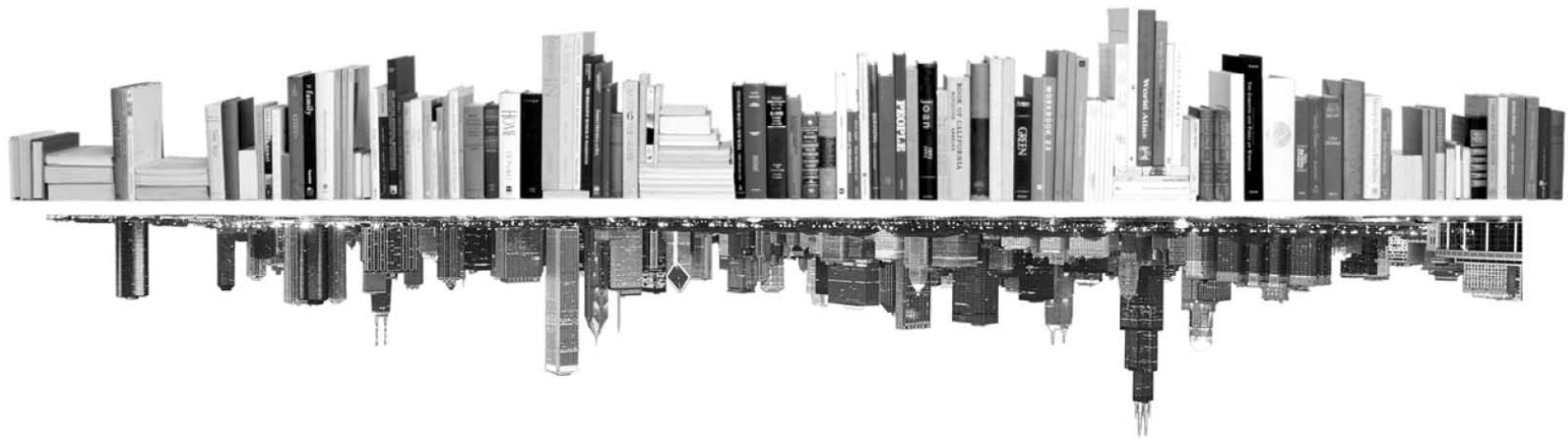


**GRADUATE
COLLEGE**



ENROLLMENT MANAGEMENT REPORT
GRADUATE DIVISION PROFILE
BEHAVIORAL AND SOCIAL SCIENCES
FALL 2017





INTRODUCTION – DIVISION PROFILE

The following profile report focuses on the Behavioral and Social Sciences graduate program division (as defined in the Graduate College by-laws).

This profile report tracks students, not enrollments. This means that students with dual enrollments are reported only once – under their first program.

Kevin Monahan
Director of Graduate Program Review and Information Systems
Graduate College, University of Illinois at Chicago
Voice: 312.413.0410 Email: kmonahan@uic.edu

TABLE OF CONTENTS

MATRICULATION	
Diversity Pipeline	1
APPLICATIONS	
by Race/Ethnicity	2 – 5
ENROLLMENT	
by Race/Ethnicity	6 – 9
by Type, Time, & Gender	10 – 13
DEGREES	
by Race/Ethnicity	14 – 15
by Gender	16 – 17
List of academic programs included in this report	Appendix A

Matriculation

Diversity Pipeline

Behavioral and Social Sciences

Fall 2013 - Fall 2017

	Fall Semester Year	Applied					Admitted					Non-URM Admitted to Applied Yield %	URM Admitted to Applied Yield %	New Enrollment					Non-URM Enrolled to Admitted Yield %	URM Enrolled to Admitted Yield %	Total Enrollment				
		Grand Total	Non-URM Total		URM Total		Grand Total	Non-URM Total		URM Total				Grand Total	Non-URM Total		URM Total				Grand Total	Non-URM Total		URM Total	
			Count	%	Count	%		Count	%	Count	%				Count	%	Count	%				Count	%	Count	%
All	2013	5153	4376	84.9%	777	15.1%	2081	1758	84.5%	323	15.5%	40.2%	41.6%	917	695	75.8%	222	24.2%	39.5%	68.7%	2788	2165	77.7%	623	22.3%
	2014	4867	4176	85.8%	691	14.2%	2027	1754	86.5%	273	13.5%	42.0%	39.5%	813	656	80.7%	157	19.3%	37.4%	57.5%	2791	2174	77.9%	617	22.1%
	2015	5120	4416	86.3%	704	13.8%	2081	1791	86.1%	290	13.9%	40.6%	41.2%	839	660	78.7%	179	21.3%	36.9%	61.7%	2807	2177	77.6%	630	22.4%
	2016	4969	4310	86.7%	659	13.3%	2269	1952	86.0%	317	14.0%	45.3%	48.1%	837	649	77.5%	188	22.5%	33.2%	59.3%	2751	2114	76.8%	637	23.2%
	2017	4670	3956	84.7%	714	15.3%	2267	1901	83.9%	366	16.1%	48.1%	51.3%	862	628	72.9%	234	27.1%	33.0%	63.9%	2767	2069	74.8%	698	25.2%
	Average	4956	4247	85.7%	709	14.3%	2145	1831	85.4%	314	14.6%	43.1%	44.3%	854	658	77.0%	196	23.0%	35.9%	62.5%	2781	2140	76.9%	641	23.1%
Masters & IBHE Certificate	2013	3654	3098	84.8%	556	15.2%	1845	1545	83.7%	300	16.3%	49.9%	54.0%	814	607	74.6%	207	25.4%	39.3%	69.0%	1915	1488	77.7%	427	22.3%
	2014	3536	3051	86.3%	485	13.7%	1747	1511	86.5%	236	13.5%	49.5%	48.7%	699	561	80.3%	138	19.7%	37.1%	58.5%	1883	1460	77.5%	423	22.5%
	2015	4005	3495	87.3%	510	12.7%	1850	1604	86.7%	246	13.3%	45.9%	48.2%	735	576	78.4%	159	21.6%	35.9%	64.6%	1935	1492	77.1%	443	22.9%
	2016	3836	3349	87.3%	487	12.7%	2062	1775	86.1%	287	13.9%	53.0%	58.9%	753	578	76.8%	175	23.2%	32.6%	61.0%	1936	1486	76.8%	450	23.2%
	2017	3501	2981	85.1%	520	14.9%	2059	1735	84.3%	324	15.7%	58.2%	62.3%	750	541	72.1%	209	27.9%	31.2%	64.5%	1965	1452	73.9%	513	26.1%
	Average	3706	3195	86.2%	512	13.8%	1913	1634	85.4%	279	14.6%	51.1%	54.5%	750	573	76.3%	178	23.7%	35.0%	63.7%	1927	1476	76.6%	451	23.4%
Doctorate	2013	1499	1278	85.3%	221	14.7%	236	213	90.3%	23	9.7%	16.7%	10.4%	103	88	85.4%	15	14.6%	41.3%	65.2%	873	677	77.5%	196	22.5%
	2014	1331	1125	84.5%	206	15.5%	280	243	86.8%	37	13.2%	21.6%	18.0%	114	95	83.3%	19	16.7%	39.1%	51.4%	908	714	78.6%	194	21.4%
	2015	1115	921	82.6%	194	17.4%	231	187	81.0%	44	19.0%	20.3%	22.7%	104	84	80.8%	20	19.2%	44.9%	45.5%	872	685	78.6%	187	21.4%
	2016	1133	961	84.8%	172	15.2%	207	177	85.5%	30	14.5%	18.4%	17.4%	84	71	84.5%	13	15.5%	40.1%	43.3%	815	628	77.1%	187	22.9%
	2017	1169	975	83.4%	194	16.6%	208	166	79.8%	42	20.2%	17.0%	21.6%	112	87	77.7%	25	22.3%	52.4%	59.5%	802	617	76.9%	185	23.1%
	Average	1249	1052	84.2%	197	15.8%	232	197	84.9%	35	15.1%	18.7%	17.8%	103	85	82.2%	18	17.8%	43.1%	52.3%	854	664	77.8%	190	22.2%
Non-Degree & Campus Certificate	2013	0	0	0.0%	0	0.0%	0	0	0.0%	0	0.0%	0.0%	0.0%	0	0	0.0%	0	0.0%	0.0%	0.0%	0	0	0.0%	0	0.0%
	2014	0	0	0.0%	0	0.0%	0	0	0.0%	0	0.0%	0.0%	0.0%	0	0	0.0%	0	0.0%	0.0%	0.0%	0	0	0.0%	0	0.0%
	2015	0	0	0.0%	0	0.0%	0	0	0.0%	0	0.0%	0.0%	0.0%	0	0	0.0%	0	0.0%	0.0%	0.0%	0	0	0.0%	0	0.0%
	2016	0	0	0.0%	0	0.0%	0	0	0.0%	0	0.0%	0.0%	0.0%	0	0	0.0%	0	0.0%	0.0%	0.0%	0	0	0.0%	0	0.0%
	2017	0	0	0.0%	0	0.0%	0	0	0.0%	0	0.0%	0.0%	0.0%	0	0	0.0%	0	0.0%	0.0%	0.0%	0	0	0.0%	0	0.0%
	Average	0	0	0.0%	0	0.0%	0	0	0.0%	0	0.0%	0.0%	0.0%	0	0	0.0%	0	0.0%	0.0%	0.0%	0	0	0.0%	0	0.0%

Note: URM stands for Under-Represented Minority and includes American Indian or Alaska Native; Black or African-American; Hispanic / Latino race/ethnicity groups

Applications - Total

by Race/Ethnicity

Behavioral and Social Sciences

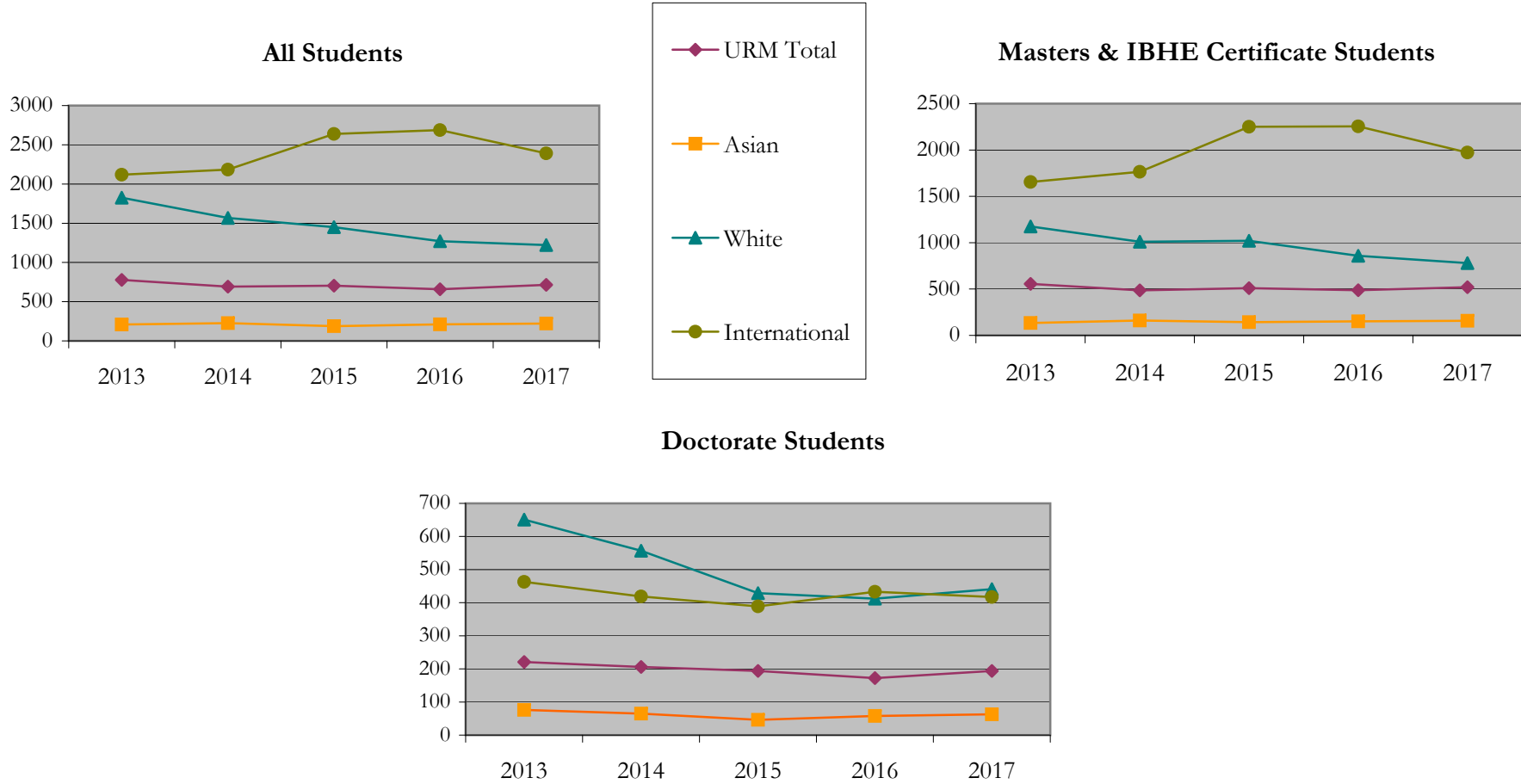
Fall 2013 - Fall 2017

		Total	Under Represented Minorities (URM)																Not Reported		
			American Indian or Alaska Native		Black or African American		Hispanic / Latino		URM Total		Asian		Native Hawaiian or Pacific Islander		White		Two or More Races			International	
			Count	%	Count	%	Count	%	Count	%	Count	%	Count	%	Count	%	Count	%		Count	%
All	2013	5153	2	0.0	400	7.8	375	7.3	777	15.1	209	4.1	2	0.0	1826	35.4	90	1.7	2118	41.1	131
	2014	4867	4	0.1	335	6.9	352	7.2	691	14.2	226	4.6	4	0.1	1567	32.2	87	1.8	2183	44.9	109
	2015	5120	4	0.1	341	6.7	359	7.0	704	13.8	188	3.7	1	0.0	1450	28.3	65	1.3	2639	51.5	73
	2016	4969	6	0.1	305	6.1	348	7.0	659	13.3	210	4.2	2	0.0	1271	25.6	75	1.5	2688	54.1	64
	2017	4670	6	0.1	309	6.6	399	8.5	714	15.3	221	4.7	2	0.0	1221	26.1	62	1.3	2390	51.2	60
Masters & IBHE Certificate	2013	3654	1	0.0	282	7.7	273	7.5	556	15.2	133	3.6	1	0.0	1175	32.2	50	1.4	1655	45.3	84
	2014	3537	3	0.1	232	6.6	250	7.1	485	13.7	161	4.6	1	0.0	1010	28.6	42	1.2	1764	49.9	74
	2015	4005	4	0.1	239	6.0	267	6.7	510	12.7	142	3.5	1	0.0	1021	25.5	42	1.0	2250	56.2	39
	2016	3836	2	0.1	220	5.7	265	6.9	487	12.7	152	4.0	1	0.0	859	22.4	42	1.1	2255	58.8	40
	2017	3501	4	0.1	213	6.1	303	8.7	520	14.9	158	4.5	2	0.1	780	22.3	37	1.1	1973	56.4	31
Doctorate	2013	1499	1	0.1	118	7.9	102	6.8	221	14.7	76	5.1	1	0.1	651	43.4	40	2.7	463	30.9	47
	2014	1330	1	0.1	103	7.7	102	7.7	206	15.5	65	4.9	3	0.2	557	41.9	45	3.4	419	31.5	35
	2015	1115	0	0.0	102	9.1	92	8.3	194	17.4	46	4.1	0	0.0	429	38.5	23	2.1	389	34.9	34
	2016	1133	4	0.4	85	7.5	83	7.3	172	15.2	58	5.1	1	0.1	412	36.4	33	2.9	433	38.2	24
	2017	1169	2	0.2	96	8.2	96	8.2	194	16.6	63	5.4	0	0.0	441	37.7	25	2.1	417	35.7	29
Non-Degree & Campus Certificate	2013	0	0	0.0	0	0.0	0	0.0	0	0.0	0	0.0	0	0.0	0	0.0	0	0.0	0	0.0	0
	2014	0	0	0.0	0	0.0	0	0.0	0	0.0	0	0.0	0	0.0	0	0.0	0	0.0	0	0.0	0
	2015	0	0	0.0	0	0.0	0	0.0	0	0.0	0	0.0	0	0.0	0	0.0	0	0.0	0	0.0	0
	2016	0	0	0.0	0	0.0	0	0.0	0	0.0	0	0.0	0	0.0	0	0.0	0	0.0	0	0.0	0
	2017	0	0	0.0	0	0.0	0	0.0	0	0.0	0	0.0	0	0.0	0	0.0	0	0.0	0	0.0	0

Note: URM stands for Under-Represented Minority and includes American Indian or Alaska Native; Black or African-American; Hispanic / Latino race/ethnicity groups

Applications - Total by Race/Ethnicity

Behavioral and Social Sciences
Fall 2013 - Fall 2017



Notes: 1) URM stands for Under-Represented Minority and includes American Indian or Alaska Native; Black or African-American; Hispanic / Latino race/ethnicity groups
2) Individual URM groups, Native Hawaiian Pacific Islander, Two or More Races, and Other race/ethnicity categories left off this charts due to relatively low numbers

Applications - Admitted

by Race/Ethnicity

Behavioral and Social Sciences

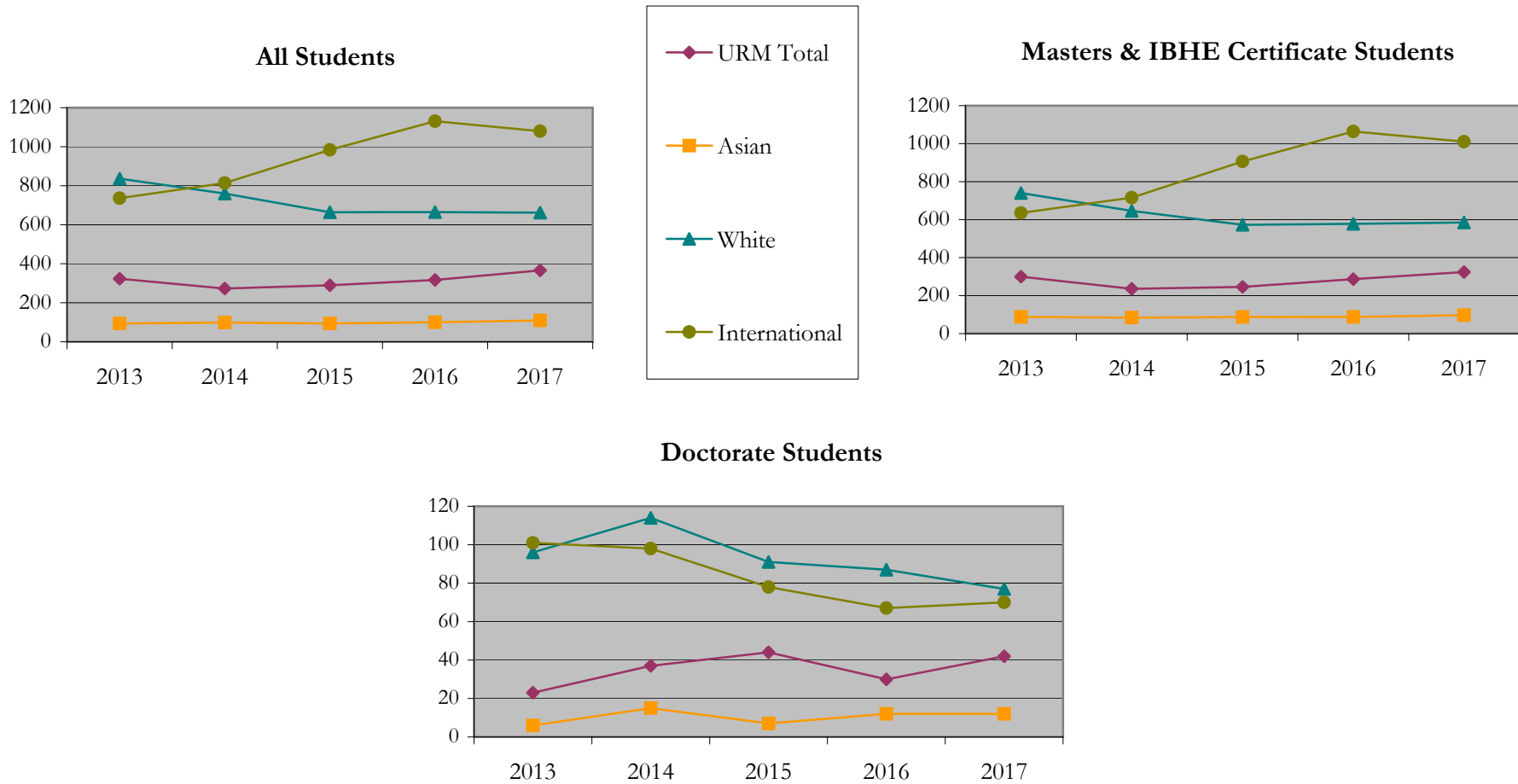
Fall 2013 - Fall 2017

		Total	Under Represented Minorities (URM)																		
			American Indian or Alaska Native		Black or African American		Hispanic / Latino		URM Total		Asian		Native Hawaiian or Pacific Islander		White		Two or More Races		International		Not Reported
			Count	%	Count	%	Count	%	Count	%	Count	%	Count	%	Count	%	Count	%	Count	%	Count
All	2013	2081	1	0.0	138	6.6	184	8.8	323	15.5	94	4.5	0	0.0	836	40.2	33	1.6	736	35.4	59
	2014	2027	2	0.1	111	5.5	160	7.9	273	13.5	99	4.9	1	0.0	760	37.5	29	1.4	814	40.2	51
	2015	2081	1	0.0	131	6.3	158	7.6	290	13.9	94	4.5	1	0.0	664	31.9	23	1.1	984	47.3	25
	2016	2269	2	0.1	135	5.9	180	7.9	317	14.0	100	4.4	1	0.0	665	29.3	29	1.3	1131	49.8	26
	2017	2267	3	0.1	143	6.3	220	9.7	366	16.1	109	4.8	2	0.1	662	29.2	25	1.1	1080	47.6	23
Masters & IBHE Certificate	2013	1845	1	0.1	129	7.0	170	9.2	300	16.3	88	4.8	0	0.0	740	40.1	27	1.5	635	34.4	55
	2014	1747	2	0.1	97	5.6	137	7.8	236	13.5	84	4.8	1	0.1	646	37.0	20	1.1	716	41.0	44
	2015	1850	1	0.1	108	5.8	137	7.4	246	13.3	87	4.7	1	0.1	573	31.0	19	1.0	906	49.0	18
	2016	2062	2	0.1	122	5.9	163	7.9	287	13.9	88	4.3	1	0.0	578	28.0	22	1.1	1064	51.6	22
	2017	2059	2	0.1	121	5.9	201	9.8	324	15.7	97	4.7	2	0.1	585	28.4	23	1.1	1010	49.1	18
Doctorate	2013	236	0	0.0	9	3.8	14	5.9	23	9.7	6	2.5	0	0.0	96	40.7	6	2.5	101	42.8	4
	2014	280	0	0.0	14	5.0	23	8.2	37	13.2	15	5.4	0	0.0	114	40.7	9	3.2	98	35.0	7
	2015	231	0	0.0	23	10.0	21	9.1	44	19.0	7	3.0	0	0.0	91	39.4	4	1.7	78	33.8	7
	2016	207	0	0.0	13	6.3	17	8.2	30	14.5	12	5.8	0	0.0	87	42.0	7	3.4	67	32.4	4
	2017	208	1	0.5	22	10.6	19	9.1	42	20.2	12	5.8	0	0.0	77	37.0	2	1.0	70	33.7	5
Non-Degree & Campus Certificate	2013	0	0	0.0	0	0.0	0	0.0	0	0.0	0	0.0	0	0.0	0	0.0	0	0.0	0	0.0	0
	2014	0	0	0.0	0	0.0	0	0.0	0	0.0	0	0.0	0	0.0	0	0.0	0	0.0	0	0.0	0
	2015	0	0	0.0	0	0.0	0	0.0	0	0.0	0	0.0	0	0.0	0	0.0	0	0.0	0	0.0	0
	2016	0	0	0.0	0	0.0	0	0.0	0	0.0	0	0.0	0	0.0	0	0.0	0	0.0	0	0.0	0
	2017	0	0	0.0	0	0.0	0	0.0	0	0.0	0	0.0	0	0.0	0	0.0	0	0.0	0	0.0	0

Note: URM stands for Under-Represented Minority and includes American Indian or Alaska Native; Black or African-American; Hispanic / Latino race/ethnicity groups

Applications - Admitted by Race/Ethnicity

Behavioral and Social Sciences
Fall 2013 - Fall 2017



Notes: 1) URM stands for Under-Represented Minority and includes American Indian or Alaska Native; Black or African-American; Hispanic / Latino race/ethnicity groups
2) Individual URM groups, Native Hawaiian Pacific Islander, Two or More Races, and Other race/ethnicity categories left off this charts due to relatively low numbers

**Enrollment - New
by Race/Ethnicity**

Behavioral and Social Sciences

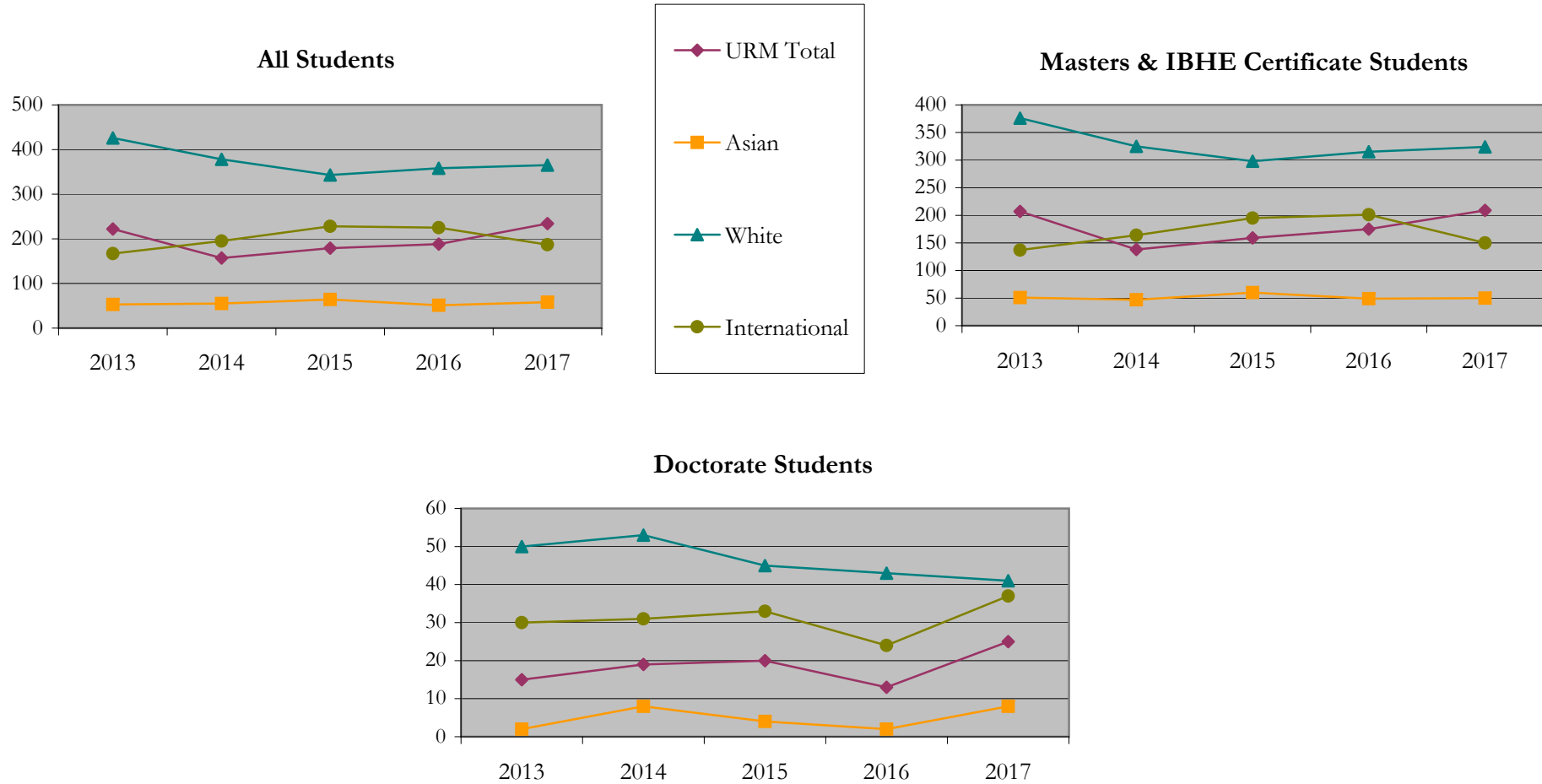
Fall 2013 - Fall 2017

		Total	Under Represented Minorities (URM)										Asian		Native Hawaiian or Pacific Islander		White		Two or More Races		International		Not Reported
			American Indian or Alaska Native		Black or African American		Hispanic / Latino		URM Total		Count	%	Count	%	Count	%	Count	%	Count	%	Count	%	Count
			Count	%	Count	%	Count	%	Count	%													
All	2013	917	0	0.0	93	10.1	129	14.1	222	24.2	53	5.8	0	0.0	426	46.5	18	2.0	167	18.2	31		
	2014	813	0	0.0	69	8.5	88	10.8	157	19.3	55	6.8	0	0.0	378	46.5	13	1.6	195	24.0	15		
	2015	839	1	0.1	75	8.9	103	12.3	179	21.3	64	7.6	1	0.1	343	40.9	11	1.3	228	27.2	13		
	2016	837	1	0.1	82	9.8	105	12.5	188	22.5	51	6.1	0	0.0	358	42.8	10	1.2	225	26.9	5		
	2017	862	2	0.2	87	10.1	145	16.8	234	27.1	58	6.7	2	0.2	365	42.3	8	0.9	187	21.7	8		
Masters & IBHE Certificate	2013	814	0	0.0	86	10.6	121	14.9	207	25.4	51	6.3	0	0.0	376	46.2	13	1.6	137	16.8	30		
	2014	699	0	0.0	61	8.7	77	11.0	138	19.7	47	6.7	0	0.0	325	46.5	10	1.4	164	23.5	15		
	2015	735	1	0.1	66	9.0	92	12.5	159	21.6	60	8.2	1	0.1	298	40.5	11	1.5	195	26.5	11		
	2016	753	1	0.1	77	10.2	97	12.9	175	23.2	49	6.5	0	0.0	315	41.8	8	1.1	201	26.7	5		
	2017	750	1	0.1	75	10.0	133	17.7	209	27.9	50	6.7	2	0.3	324	43.2	8	1.1	150	20.0	7		
Doctorate	2013	103	0	0.0	7	6.8	8	7.8	15	14.6	2	1.9	0	0.0	50	48.5	5	4.9	30	29.1	1		
	2014	114	0	0.0	8	7.0	11	9.6	19	16.7	8	7.0	0	0.0	53	46.5	3	2.6	31	27.2	0		
	2015	104	0	0.0	9	8.7	11	10.6	20	19.2	4	3.8	0	0.0	45	43.3	0	0.0	33	31.7	2		
	2016	84	0	0.0	5	6.0	8	9.5	13	15.5	2	2.4	0	0.0	43	51.2	2	2.4	24	28.6	0		
	2017	112	1	0.9	12	10.7	12	10.7	25	22.3	8	7.1	0	0.0	41	36.6	0	0.0	37	33.0	1		
Non-Degree & Campus Certificate	2013	0	0	0.0	0	0.0	0	0.0	0	0.0	0	0.0	0	0.0	0	0.0	0	0.0	0	0.0	0		
	2014	0	0	0.0	0	0.0	0	0.0	0	0.0	0	0.0	0	0.0	0	0.0	0	0.0	0	0.0	0		
	2015	0	0	0.0	0	0.0	0	0.0	0	0.0	0	0.0	0	0.0	0	0.0	0	0.0	0	0.0	0		
	2016	0	0	0.0	0	0.0	0	0.0	0	0.0	0	0.0	0	0.0	0	0.0	0	0.0	0	0.0	0		
	2017	0	0	0.0	0	0.0	0	0.0	0	0.0	0	0.0	0	0.0	0	0.0	0	0.0	0	0.0	0		

Note: URM stands for Under-Represented Minority and includes American Indian or Alaska Native; Black or African-American; Hispanic / Latino race/ethnicity groups

Enrollment - New by Race/Ethnicity

Behavioral and Social Sciences
Fall 2013 - Fall 2017



Notes: 1) URM stands for Under-Represented Minority and includes American Indian or Alaska Native; Black or African-American; Hispanic / Latino race/ethnicity groups

2) Individual URM groups, Native Hawaiian Pacific Islander, Two or More Races, and Other race/ethnicity categories left off this charts due to relatively low numbers

**Enrollment - Total
by Race/Ethnicity**

Behavioral and Social Sciences

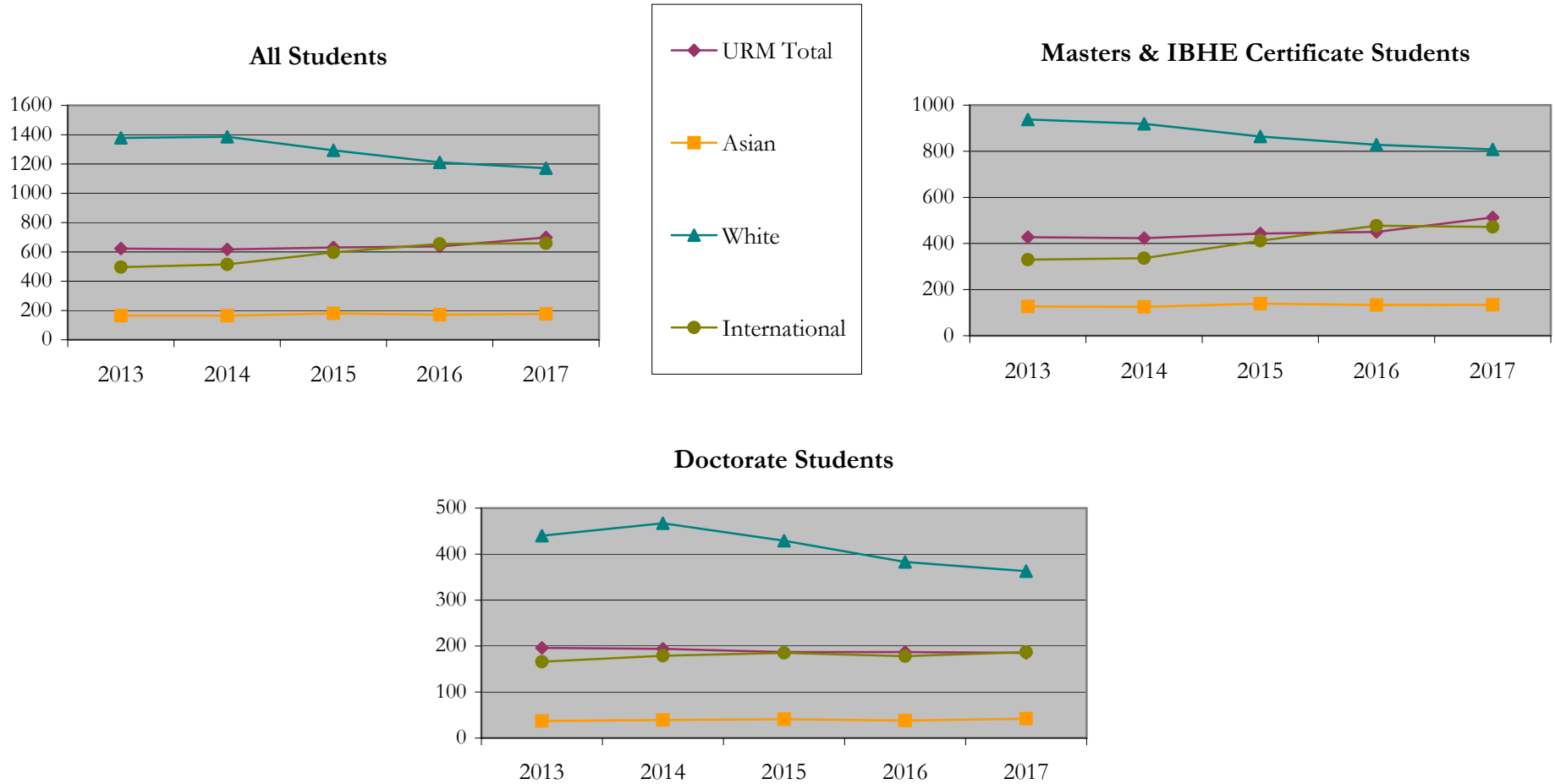
Fall 2013 - Fall 2017

		Total	Under Represented Minorities (URM)								Asian		Native Hawaiian or Pacific Islander		White		Two or More Races		International		Not Reported
			American Indian or Alaska Native		Black or African American		Hispanic / Latino		URM Total												
			Count	%	Count	%	Count	%	Count	%											
All	2013	2788	1	0.0	303	10.9	319	11.4	623	22.3	164	5.9	3	0.1	1378	49.4	56	2.0	496	17.8	68
	2014	2791	2	0.1	289	10.4	326	11.7	617	22.1	164	5.9	3	0.1	1386	49.7	44	1.6	515	18.5	62
	2015	2807	3	0.1	287	10.2	340	12.1	630	22.4	180	6.4	4	0.1	1293	46.1	49	1.7	597	21.3	54
	2016	2751	3	0.1	299	10.9	335	12.2	637	23.2	171	6.2	2	0.1	1211	44.0	45	1.6	655	23.8	30
	2017	2767	3	0.1	305	11.0	390	14.1	698	25.2	176	6.4	4	0.1	1171	42.3	40	1.4	659	23.8	19
Masters & IBHE Certificate	2013	1915	0	0.0	186	9.7	241	12.6	427	22.3	127	6.6	2	0.1	938	49.0	37	1.9	330	17.2	54
	2014	1883	1	0.1	179	9.5	243	12.9	423	22.5	125	6.6	2	0.1	919	48.8	27	1.4	336	17.8	51
	2015	1935	2	0.1	184	9.5	257	13.3	443	22.9	139	7.2	3	0.2	864	44.7	31	1.6	412	21.3	43
	2016	1936	2	0.1	196	10.1	252	13.0	450	23.2	133	6.9	1	0.1	828	42.8	29	1.5	477	24.6	18
	2017	1965	1	0.1	205	10.4	307	15.6	513	26.1	134	6.8	3	0.2	808	41.1	24	1.2	472	24.0	11
Doctorate	2013	873	1	0.1	117	13.4	78	8.9	196	22.5	37	4.2	1	0.1	440	50.4	19	2.2	166	19.0	14
	2014	908	1	0.1	110	12.1	83	9.1	194	21.4	39	4.3	1	0.1	467	51.4	17	1.9	179	19.7	11
	2015	872	1	0.1	103	11.8	83	9.5	187	21.4	41	4.7	1	0.1	429	49.2	18	2.1	185	21.2	11
	2016	815	1	0.1	103	12.6	83	10.2	187	22.9	38	4.7	1	0.1	383	47.0	16	2.0	178	21.8	12
	2017	802	2	0.2	100	12.5	83	10.3	185	23.1	42	5.2	1	0.1	363	45.3	16	2.0	187	23.3	8
Non-Degree & Campus Certificate	2013	0	0	0.0	0	0.0	0	0.0	0	0.0	0	0.0	0	0.0	0	0.0	0	0.0	0	0.0	0
	2014	0	0	0.0	0	0.0	0	0.0	0	0.0	0	0.0	0	0.0	0	0.0	0	0.0	0	0.0	0
	2015	0	0	0.0	0	0.0	0	0.0	0	0.0	0	0.0	0	0.0	0	0.0	0	0.0	0	0.0	0
	2016	0	0	0.0	0	0.0	0	0.0	0	0.0	0	0.0	0	0.0	0	0.0	0	0.0	0	0.0	0
	2017	0	0	0.0	0	0.0	0	0.0	0	0.0	0	0.0	0	0.0	0	0.0	0	0.0	0	0.0	0

Note: URM stands for Under-Represented Minority and includes American Indian or Alaska Native; Black or African-American; Hispanic / Latino race/ethnicity groups

Enrollment - Total by Race/Ethnicity

Behavioral and Social Sciences
Fall 2013 - Fall 2017



Notes: 1) URM stands for Under-Represented Minority and includes American Indian or Alaska Native; Black or African-American; Hispanic / Latino race/ethnicity groups
2) Individual URM groups, Native Hawaiian Pacific Islander, Two or More Races, and Other race/ethnicity categories left off this charts due to relatively low numbers

Enrollment

by Student Type, Enrollment Time, and Gender

Behavioral and Social Sciences

Fall 2013 - Fall 2017

		Total	New		Continuing		Male		Female		Gender Not Reported	Part-time		Full-time	
			Count	%	Count	%	Count	%	Count	%		Count	%	Count	%
All	2013	2788	917	32.9	1871	67.1	1016	36.4	1764	63.3	8	988	35.4	1800	64.6
	2014	2791	813	29.1	1978	70.9	1068	38.3	1716	61.5	7	992	35.5	1799	64.5
	2015	2807	839	29.9	1968	70.1	1135	40.4	1663	59.2	9	929	33.1	1878	66.9
	2016	2751	837	30.4	1914	69.6	1065	38.7	1677	61.0	9	953	34.6	1798	65.4
	2017	2767	862	31.2	1905	68.8	1059	38.3	1702	61.5	6	925	33.4	1842	66.6
Masters & IBHE Certificate	2013	1915	814	42.5	1101	57.5	702	36.7	1205	62.9	8	675	35.2	1240	64.8
	2014	1883	699	37.1	1184	62.9	740	39.3	1136	60.3	7	647	34.4	1236	65.6
	2015	1935	735	38.0	1200	62.0	803	41.5	1123	58.0	9	611	31.6	1324	68.4
	2016	1936	753	38.9	1183	61.1	764	39.5	1163	60.1	9	649	33.5	1287	66.5
	2017	1965	750	38.2	1215	61.8	763	38.8	1196	60.9	6	649	33.0	1316	67.0
Doctorate	2013	873	103	11.8	770	88.2	314	36.0	559	64.0	0	313	35.9	560	64.1
	2014	908	114	12.6	794	87.4	328	36.1	580	63.9	0	345	38.0	563	62.0
	2015	872	104	11.9	768	88.1	332	38.1	540	61.9	0	318	36.5	554	63.5
	2016	815	84	10.3	731	89.7	301	36.9	514	63.1	0	304	37.3	511	62.7
	2017	802	112	14.0	690	86.0	296	36.9	506	63.1	0	276	34.4	526	65.6
Non-Degree & Campus Certificate	2013	0	0	0.0	0	0.0	0	0.0	0	0.0	0	0	0.0	0	0.0
	2014	0	0	0.0	0	0.0	0	0.0	0	0.0	0	0	0.0	0	0.0
	2015	0	0	0.0	0	0.0	0	0.0	0	0.0	0	0	0.0	0	0.0
	2016	0	0	0.0	0	0.0	0	0.0	0	0.0	0	0	0.0	0	0.0
	2017	0	0	0.0	0	0.0	0	0.0	0	0.0	0	0	0.0	0	0.0

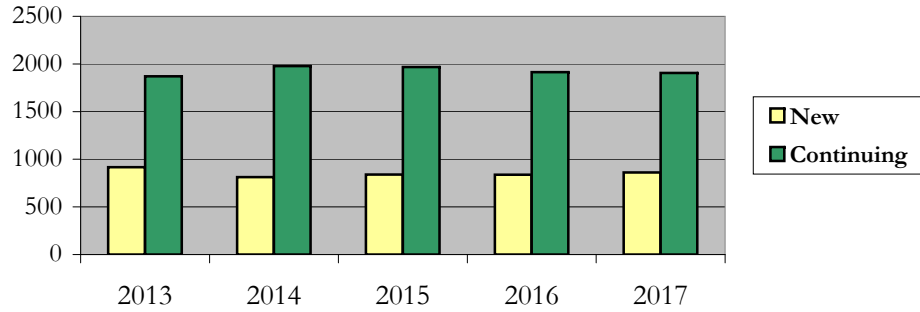
Enrollment

by Student Type, Enrollment Time, and Gender (All Students)

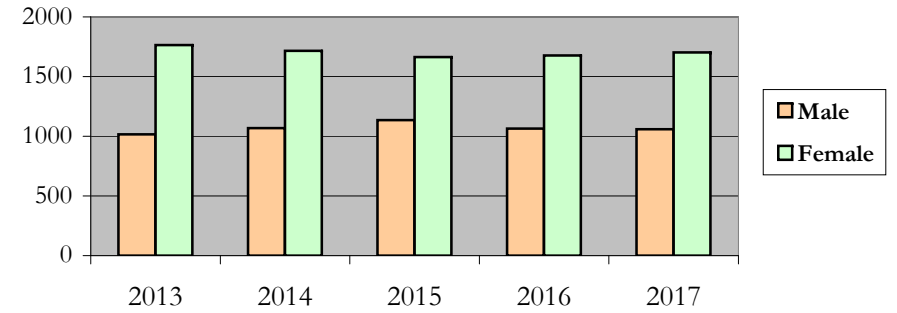
Behavioral and Social Sciences

Fall 2013 - Fall 2017

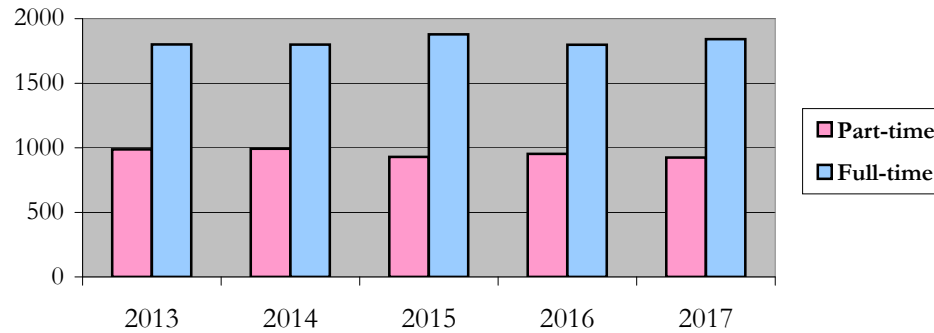
New and Continuing Enrollment



Enrollment by Gender



Enrollment by Student Enrollment Time



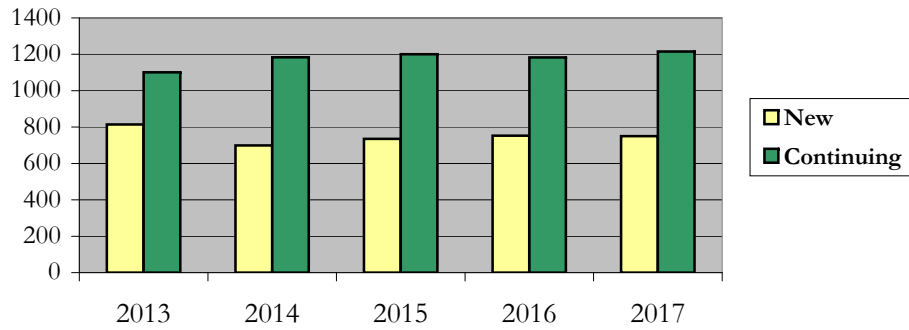
Enrollment

by Student Type, Enrollment Time, and Gender (Master's Students)

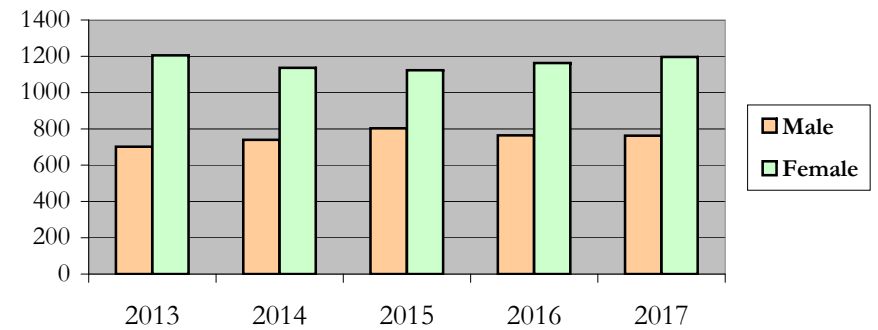
Behavioral and Social Sciences

Fall 2013 - Fall 2017

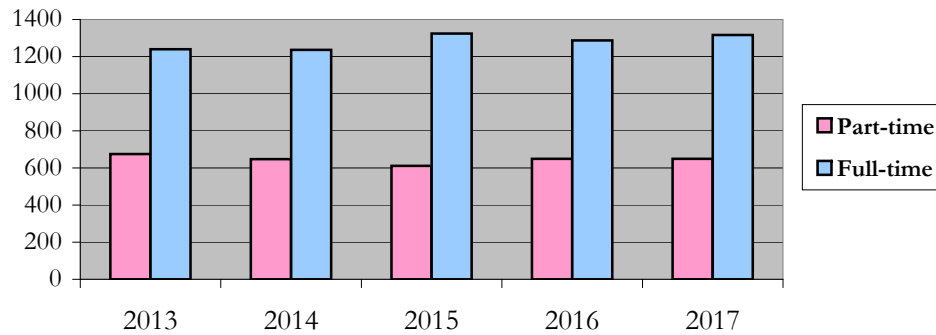
New and Continuing Enrollment



Enrollment by Gender



Enrollment by Student Enrollment Time



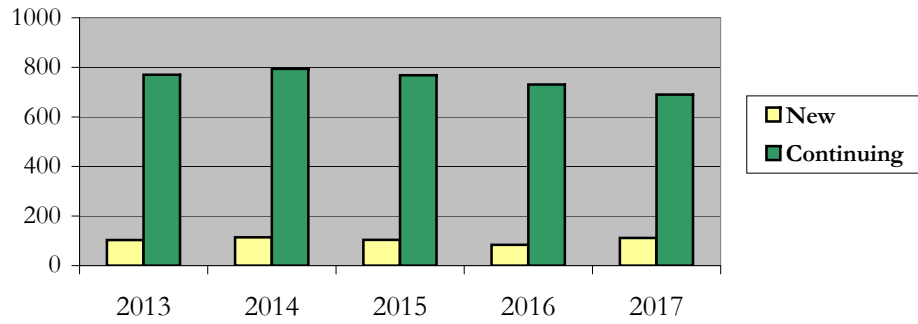
Enrollment

by Student Type, Enrollment Time, and Gender (Doctorate Students)

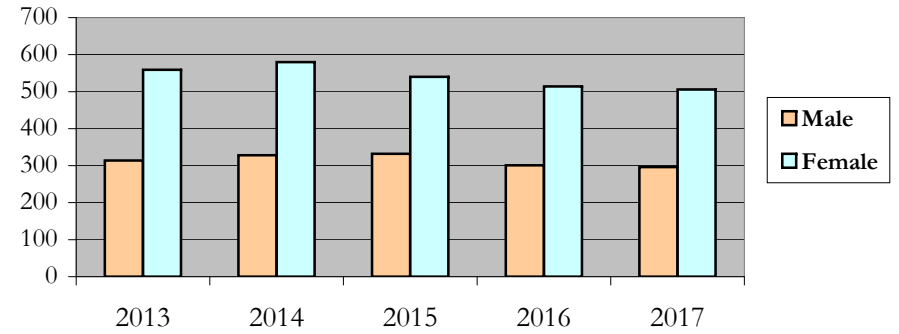
Behavioral and Social Sciences

Fall 2013 - Fall 2017

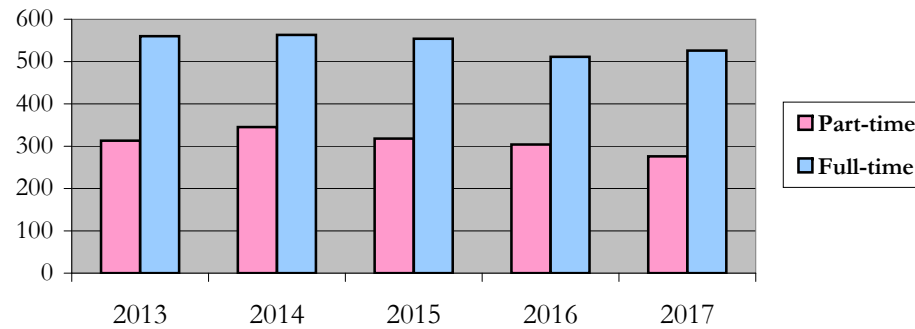
New and Continuing Enrollment



Enrollment by Gender



Enrollment by Student Enrollment Time



Degrees Conferred by Race/Ethnicity

Behavioral and Social Sciences

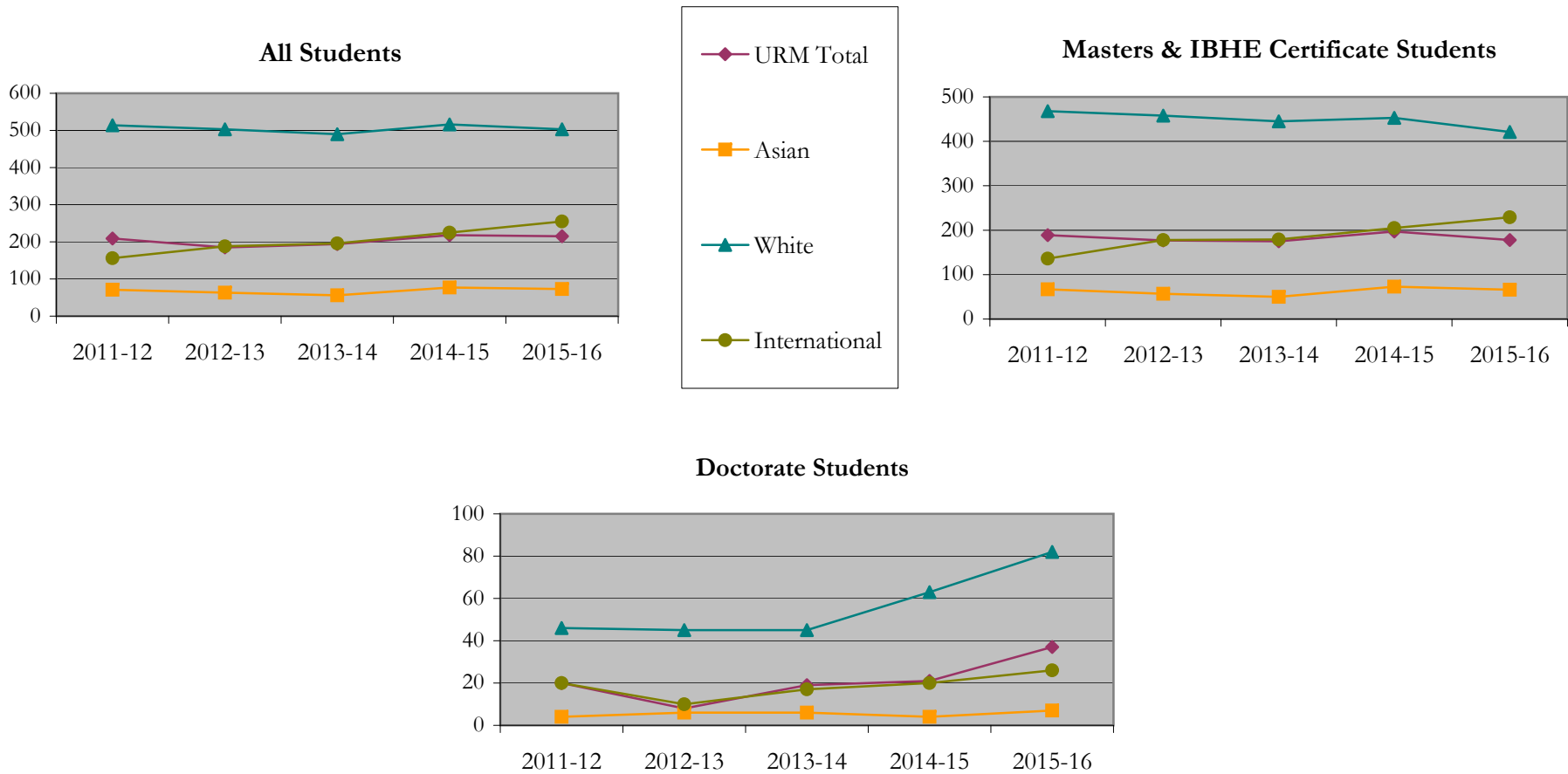
Fall 2013 - Fall 2017

		Total	Under Represented Minorities (URM)								Asian	Native Hawaiian or Pacific Islander		White		Two or More Races		International		Not Reported	
			American Indian or Alaska Native		Black or African American		Hispanic / Latino		URM Total			Count	%	Count	%	Count	%	Count	%	Count	%
			Count	%	Count	%	Count	%	Count	%											
All	2012 - 13	988	0	0.0	112	11.3	97	9.8	209	21.2	71	7.2	1	0.1	514	52.0	15	1.5	156	15.8	22
	2013 - 14	983	0	0.0	80	8.1	105	10.7	185	18.8	63	6.4	0	0.0	503	51.2	21	2.1	188	19.1	23
	2014 - 15	970	0	0.0	85	8.8	109	11.2	194	20.0	56	5.8	1	0.1	490	50.5	13	1.3	196	20.2	20
	2015 - 16	1083	1	0.1	80	7.4	137	12.7	218	20.1	77	7.1	1	0.1	516	47.6	25	2.3	225	20.8	21
	2016 - 17	1072	1	0.1	93	8.7	121	11.3	215	20.1	73	6.8	0	0.0	503	46.9	18	1.7	255	23.8	8
Masters & IBHE Certificate	2012 - 13	897	0	0.0	94	10.5	95	10.6	189	21.1	67	7.5	1	0.1	468	52.2	14	1.6	136	15.2	22
	2013 - 14	911	0	0.0	73	8.0	104	11.4	177	19.4	57	6.3	0	0.0	458	50.3	20	2.2	178	19.5	21
	2014 - 15	880	0	0.0	71	8.1	104	11.8	175	19.9	50	5.7	1	0.1	445	50.6	11	1.3	179	20.3	19
	2015 - 16	970	1	0.1	71	7.3	125	12.9	197	20.3	73	7.5	1	0.1	453	46.7	22	2.3	205	21.1	19
	2016 - 17	916	1	0.1	71	7.8	106	11.6	178	19.4	66	7.2	0	0.0	421	46.0	15	1.6	229	25.0	7
Doctorate	2012 - 13	91	0	0.0	18	19.8	2	2.2	20	22.0	4	4.4	0	0.0	46	50.5	1	1.1	20	22.0	0
	2013 - 14	72	0	0.0	7	9.7	1	1.4	8	11.1	6	8.3	0	0.0	45	62.5	1	1.4	10	13.9	2
	2014 - 15	90	0	0.0	14	15.6	5	5.6	19	21.1	6	6.7	0	0.0	45	50.0	2	2.2	17	18.9	1
	2015 - 16	113	0	0.0	9	8.0	12	10.6	21	18.6	4	3.5	0	0.0	63	55.8	3	2.7	20	17.7	2
	2016 - 17	156	0	0.0	22	14.1	15	9.6	37	23.7	7	4.5	0	0.0	82	52.6	3	1.9	26	16.7	1
Non-Degree & Campus Certificate	2012 - 13	0	0	0.0	0	0.0	0	0.0	0	0.0	0	0.0	0	0.0	0	0.0	0	0.0	0	0.0	0
	2013 - 14	0	0	0.0	0	0.0	0	0.0	0	0.0	0	0.0	0	0.0	0	0.0	0	0.0	0	0.0	0
	2014 - 15	0	0	0.0	0	0.0	0	0.0	0	0.0	0	0.0	0	0.0	0	0.0	0	0.0	0	0.0	0
	2015 - 16	0	0	0.0	0	0.0	0	0.0	0	0.0	0	0.0	0	0.0	0	0.0	0	0.0	0	0.0	0
	2016 - 17	0	0	0.0	0	0.0	0	0.0	0	0.0	0	0.0	0	0.0	0	0.0	0	0.0	0	0.0	0

Note: Each row represents a fiscal year, beginning with Summer term and ending with Spring.

Degrees Conferred by Race/Ethnicity

Behavioral and Social Sciences
Fall 2013 - Fall 2017



Notes: 1) URM stands for Under-Represented Minority and includes American Indian or Alaska Native; Black or African-American; Hispanic / Latino race/ethnicity groups

2) Individual URM groups, Native Hawaiian Pacific Islander, Two or More Races, and Other race/ethnicity categories left off this charts due to relatively low numbers

Degrees Conferred

by Gender

Behavioral and Social Sciences

Fall 2013 - Fall 2017

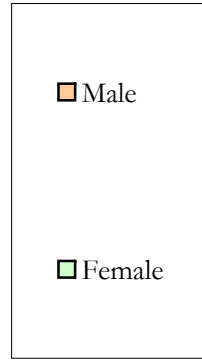
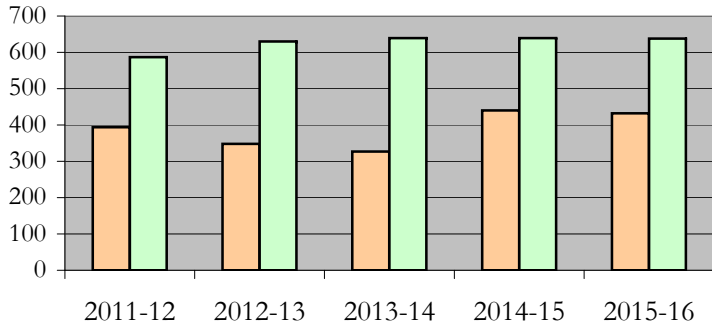
		Total	Male		Female		Not Reported
			Count	%	Count	%	
All	2012 - 13	988	394	39.9	587	59.4	7
	2013 - 14	983	348	35.4	630	64.1	5
	2014 - 15	970	327	33.7	639	65.9	4
	2015 - 16	1083	440	40.6	639	59.0	4
	2016 - 17	1072	432	40.3	638	59.5	2
Masters & IBHE Certificate	2012 - 13	897	356	39.7	534	59.5	7
	2013 - 14	911	320	35.1	586	64.3	5
	2014 - 15	880	298	33.9	578	65.7	4
	2015 - 16	970	394	40.6	572	59.0	4
	2016 - 17	916	370	40.4	544	59.4	2
Doctorate	2012 - 13	91	38	41.8	53	58.2	0
	2013 - 14	72	28	38.9	44	61.1	0
	2014 - 15	90	29	32.2	61	67.8	0
	2015 - 16	113	46	40.7	67	59.3	0
	2016 - 17	156	62	39.7	94	60.3	0
Campus Certificates	2012 - 13	0	0	0.0	0	0.0	0
	2013 - 14	0	0	0.0	0	0.0	0
	2014 - 15	0	0	0.0	0	0.0	0
	2015 - 16	0	0	0.0	0	0.0	0
	2016 - 17	0	0	0.0	0	0.0	0

Note: Each row represents a fiscal year, beginning with Summer term and ending with Spring.

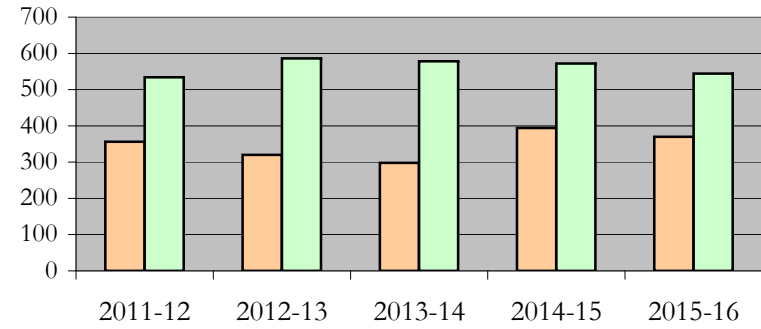
Degrees Conferred by Gender

Behavioral and Social Sciences
Fall 2013 - Fall 2017

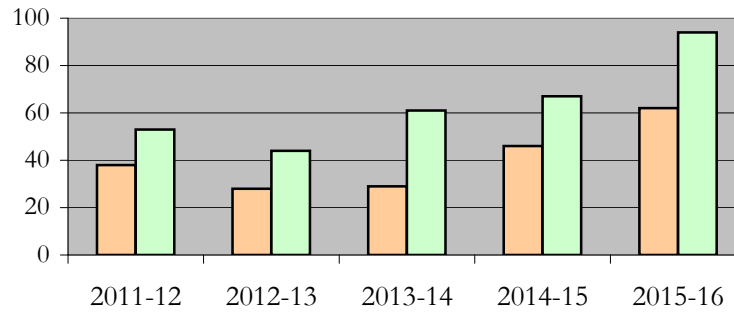
All Students



Masters & IBHE Certificate Students



Doctorate Students



Appendix A

Behavioral and Social Sciences

Fall 2013 - Fall 2017

List of program codes included in this document

20FL9875MBA	20FS1238MA	20FS8549MED
20FS0074MA	20FS1274MS	20FS8550MED
20FS0074PHD	20FS1432MS	20FS9875MBA
20FS0075MS	20FS1592PHD	20FS9890MS
20FS0079PHD	20FS1657MA	20FS9890PHD
20FS0093MED	20FS1785PHD	20FS9953PHD
20FS0106MS	20FS1786MUPP	20GL0365MSW
20FS0106PHD	20FS4015EDD	2PFS5106MEDU
20FS0210PHD	20FS4069MED	20GL5124CERT
20FS0297MAT	20FS4070MED	20FS5124CERT
20FS0338MA	20FS4070PHD	
20FS0338PHD	20FS5082MED	
20FS0339MPA	20FS5084PHD	
20FS0339PHD	20FS5102MED	
20FS0340MA	20FS5105MED	
20FS0340PHD	20FS5106MED	
20FS0343MA	20FS5106MEDU	
20FS0343PHD	20FS5129PHD	
20FS0344MA	20FS5130MA	
20FS0344PHD	20FS5130PHD	
20FS0365MSW	20FS5343MED	
20FS0365PHD	20FS5357PHD	
20FS1000MS	20FS5395MS	
20FS1113MA	20FS5523MED	
20FS1181PHD	20FS5524MED	
20FS1183PHD	20FS8547MED	

Notes: 1) Program codes are sorted by alphabetical order in column-wise fashion

2) Program codes highlighted in yellow did not have applications, enrollment, nor degrees conferred in the covered period