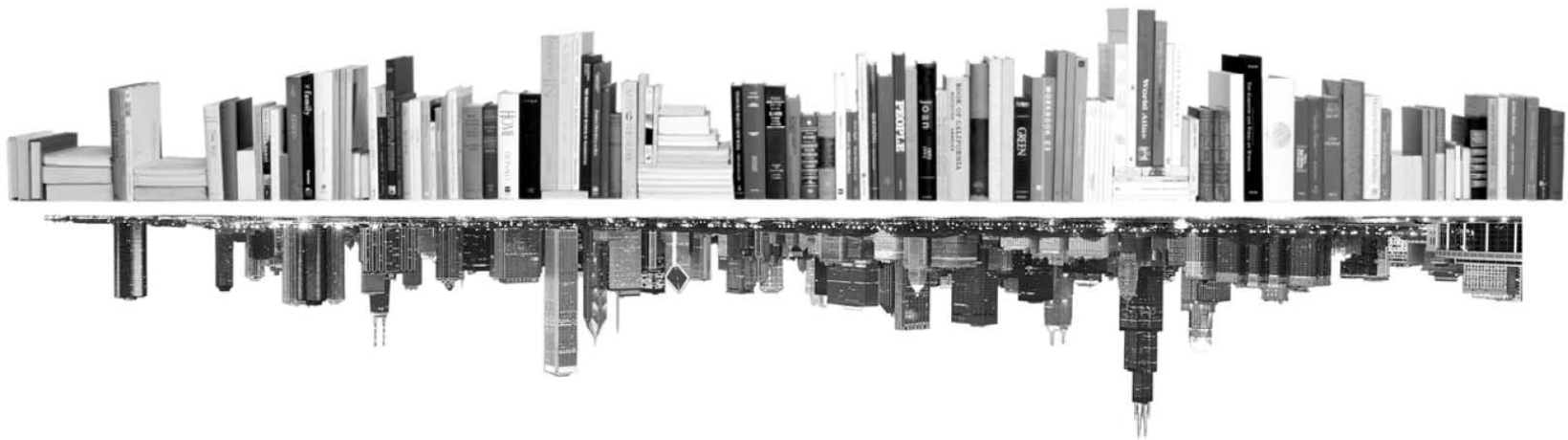


**GRADUATE
COLLEGE**



**ENROLLMENT MANAGEMENT REPORT
COLLEGE PROFILE
URBAN PLANNING AND PUBLIC AFFAIRS
FALL 2017**





INTRODUCTION – COLLEGE PROFILE

The following college profile has been developed to tailor our annual enrollment report to your college’s data.

The college profile report tracks students, not enrollments. This means that students with dual enrollments are reported only once – under their first program.

Kevin Monahan
Director of Graduate Program Review and Information Systems
Graduate College, University of Illinois at Chicago
Voice: 312.413.0410 Email: kmonahan@uic.edu

TABLE OF CONTENTS

MATRICULATION	
Diversity Pipeline	1
APPLICATIONS	
by Race/Ethnicity	2 – 5
ENROLLMENT	
by Race/Ethnicity	6 – 9
by Type, Time, & Gender	10 – 13
DEGREES	
by Race/Ethnicity	14 – 15
by Gender	16 – 17
List of academic programs included in this report	Appendix A

Matriculation

Diversity Pipeline

College of Urban Planning and Public Affairs

Fall 2013 - Fall 2017

	Fall Semester Year	Applied					Admitted					Non-URM Admitted to Applied Yield %	URM Admitted to Applied Yield %	New Enrollment					Non-URM Enrolled to Admitted Yield %	URM Enrolled to Admitted Yield %	Total Enrollment				
		Grand Total	Non-URM Total		URM Total		Grand Total	Non-URM Total		URM Total				Grand Total	Non-URM Total		URM Total				Grand Total	Non-URM Total		URM Total	
			Count	%	Count	%		Count	%	Count	%				Count	%	Count	%				Count	%	Count	%
All	2013	479	409	85.4%	70	14.6%	295	257	87.1%	38	12.9%	62.8%	54.3%	100	80	80.0%	20	20.0%	31.1%	52.6%	380	303	79.7%	77	20.3%
	2014	430	352	81.9%	78	18.1%	296	246	83.1%	50	16.9%	69.9%	64.1%	98	77	78.6%	21	21.4%	31.3%	42.0%	331	261	78.9%	70	21.1%
	2015	375	303	80.8%	72	19.2%	277	223	80.5%	54	19.5%	73.6%	75.0%	108	73	67.6%	35	32.4%	32.7%	64.8%	320	236	73.8%	84	26.3%
	2016	370	293	79.2%	77	20.8%	233	184	79.0%	49	21.0%	62.8%	63.6%	97	69	71.1%	28	28.9%	37.5%	57.1%	309	216	69.9%	93	30.1%
	2017	306	230	75.2%	76	24.8%	221	170	76.9%	51	23.1%	73.9%	67.1%	105	78	74.3%	27	25.7%	45.9%	52.9%	289	204	70.6%	85	29.4%
	Average	392	317	81.0%	75	19.0%	264	216	81.7%	48	18.3%	68.1%	64.9%	102	75	74.2%	26	25.8%	34.9%	54.1%	326	244	74.9%	82	25.1%
Masters & IBHE Certificate	2013	361	306	84.8%	55	15.2%	258	227	88.0%	31	12.0%	74.2%	56.4%	81	64	79.0%	17	21.0%	28.2%	54.8%	291	230	79.0%	61	21.0%
	2014	343	275	80.2%	68	19.8%	263	218	82.9%	45	17.1%	79.3%	66.2%	83	64	77.1%	19	22.9%	29.4%	42.2%	262	201	76.7%	61	23.3%
	2015	310	249	80.3%	61	19.7%	256	209	81.6%	47	18.4%	83.9%	77.0%	98	68	69.4%	30	30.6%	32.5%	63.8%	261	184	70.5%	77	29.5%
	2016	263	207	78.7%	56	21.3%	202	161	79.7%	41	20.3%	77.8%	73.2%	82	57	69.5%	25	30.5%	35.4%	61.0%	249	167	67.1%	82	32.9%
	2017	240	175	72.9%	65	27.1%	191	144	75.4%	47	24.6%	82.3%	72.3%	91	65	71.4%	26	28.6%	45.1%	55.3%	233	156	67.0%	77	33.0%
	Average	303	242	79.9%	61	20.1%	234	192	82.0%	42	18.0%	79.1%	69.2%	87	64	73.1%	23	26.9%	33.2%	55.5%	259	188	72.4%	72	27.6%
Doctorate	2013	97	88	90.7%	9	9.3%	22	20	90.9%	2	9.1%	22.7%	22.2%	8	8	100.0%	0	0.0%	40.0%	0.0%	55	46	83.6%	9	16.4%
	2014	70	65	92.9%	5	7.1%	22	22	100.0%	0	0.0%	33.8%	0.0%	7	7	100.0%	0	0.0%	31.8%	0.0%	47	41	87.2%	6	12.8%
	2015	47	45	95.7%	2	4.3%	7	7	100.0%	0	0.0%	15.6%	0.0%	0	0	0.0%	0	0.0%	0.0%	0.0%	38	36	94.7%	2	5.3%
	2016	89	73	82.0%	16	18.0%	17	13	76.5%	4	23.5%	17.8%	25.0%	5	4	80.0%	1	20.0%	30.8%	25.0%	35	32	91.4%	3	8.6%
	2017	55	46	83.6%	9	16.4%	22	20	90.9%	2	9.1%	43.5%	22.2%	9	9	100.0%	0	0.0%	45.0%	0.0%	38	35	92.1%	3	7.9%
	Average	72	63	88.5%	8	11.5%	18	16	91.1%	2	8.9%	25.9%	19.5%	6	6	96.6%	0	3.4%	34.1%	12.5%	43	38	89.2%	5	10.8%
Non-Degree & Campus Certificate	2013	21	15	71.4%	6	28.6%	15	10	66.7%	5	33.3%	66.7%	83.3%	11	8	72.7%	3	27.3%	80.0%	60.0%	34	27	79.4%	7	20.6%
	2014	17	12	70.6%	5	29.4%	11	6	54.5%	5	45.5%	50.0%	100.0%	8	6	75.0%	2	25.0%	100.0%	40.0%	22	19	86.4%	3	13.6%
	2015	18	9	50.0%	9	50.0%	14	7	50.0%	7	50.0%	77.8%	77.8%	10	5	50.0%	5	50.0%	71.4%	71.4%	21	16	76.2%	5	23.8%
	2016	18	13	72.2%	5	27.8%	14	10	71.4%	4	28.6%	76.9%	80.0%	10	8	80.0%	2	20.0%	80.0%	50.0%	25	17	68.0%	8	32.0%
	2017	11	9	81.8%	2	18.2%	8	6	75.0%	2	25.0%	66.7%	100.0%	5	4	80.0%	1	20.0%	66.7%	50.0%	18	13	72.2%	5	27.8%
	Average	17	12	68.2%	5	31.8%	12	8	62.9%	5	37.1%	67.2%	85.2%	9	6	70.5%	3	29.5%	79.5%	56.5%	24	18	76.7%	6	23.3%

Note: URM stands for Under-Represented Minority and includes American Indian or Alaska Native; Black or African-American; Hispanic / Latino race/ethnicity groups

Applications - Total

by Race/Ethnicity

College of Urban Planning and Public Affairs

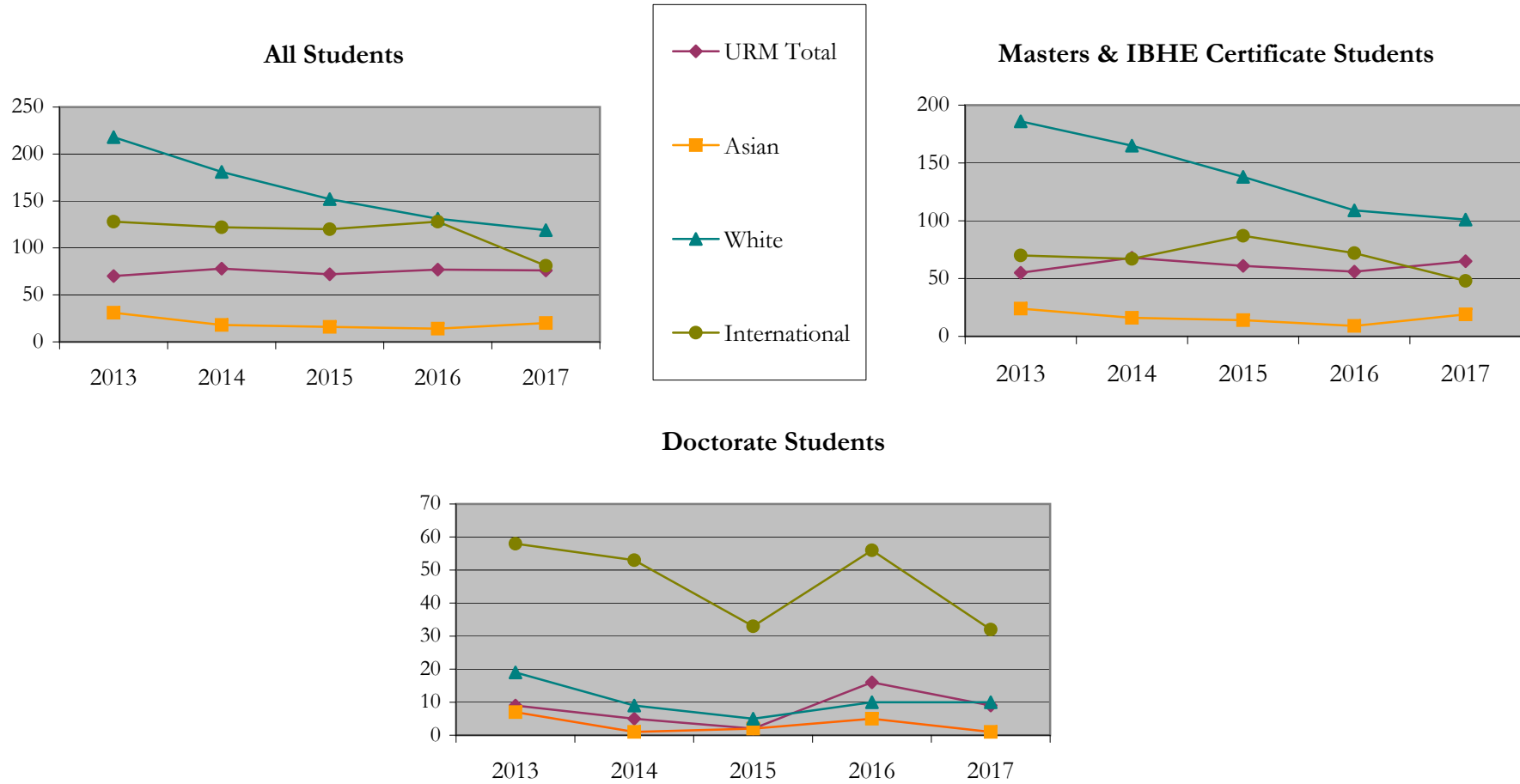
Fall 2013 - Fall 2017

		Total	Under Represented Minorities (URM)																		
			American Indian or Alaska Native		Black or African American		Hispanic / Latino		URM Total		Asian		Native Hawaiian or Pacific Islander		White		Two or More Races		International		Not Reported
			Count	%	Count	%	Count	%	Count	%	Count	%	Count	%	Count	%	Count	%	Count	%	Count
All	2013	479	0	0.0	34	7.1	36	7.5	70	14.6	31	6.5	0	0.0	218	45.5	11	2.3	128	26.7	21
	2014	430	0	0.0	37	8.6	41	9.5	78	18.1	18	4.2	1	0.2	181	42.1	10	2.3	122	28.4	20
	2015	375	0	0.0	44	11.7	28	7.5	72	19.2	16	4.3	0	0.0	152	40.5	5	1.3	120	32.0	10
	2016	370	1	0.3	39	10.5	37	10.0	77	20.8	14	3.8	0	0.0	131	35.4	10	2.7	128	34.6	10
	2017	306	0	0.0	43	14.1	33	10.8	76	24.8	20	6.5	0	0.0	119	38.9	7	2.3	81	26.5	3
Masters & IBHE Certificate	2013	361	0	0.0	29	8.0	26	7.2	55	15.2	24	6.6	0	0.0	186	51.5	9	2.5	70	19.4	17
	2014	343	0	0.0	32	9.3	36	10.5	68	19.8	16	4.7	1	0.3	165	48.1	9	2.6	67	19.5	17
	2015	310	0	0.0	38	12.3	23	7.4	61	19.7	14	4.5	0	0.0	138	44.5	5	1.6	87	28.1	5
	2016	263	0	0.0	26	9.9	30	11.4	56	21.3	9	3.4	0	0.0	109	41.4	8	3.0	72	27.4	9
	2017	240	0	0.0	38	15.8	27	11.3	65	27.1	19	7.9	0	0.0	101	42.1	5	2.1	48	20.0	2
Doctorate	2013	97	0	0.0	3	3.1	6	6.2	9	9.3	7	7.2	0	0.0	19	19.6	1	1.0	58	59.8	3
	2014	70	0	0.0	3	4.3	2	2.9	5	7.1	1	1.4	0	0.0	9	12.9	1	1.4	53	75.7	1
	2015	47	0	0.0	1	2.1	1	2.1	2	4.3	2	4.3	0	0.0	5	10.6	0	0.0	33	70.2	5
	2016	89	1	1.1	8	9.0	7	7.9	16	18.0	5	5.6	0	0.0	10	11.2	2	2.2	56	62.9	0
	2017	55	0	0.0	4	7.3	5	9.1	9	16.4	1	1.8	0	0.0	10	18.2	2	3.6	32	58.2	1
Non-Degree & Campus Certificate	2013	21	0	0.0	2	9.5	4	19.0	6	28.6	0	0.0	0	0.0	13	61.9	1	4.8	0	0.0	1
	2014	17	0	0.0	2	11.8	3	17.6	5	29.4	1	5.9	0	0.0	7	41.2	0	0.0	2	11.8	2
	2015	18	0	0.0	5	27.8	4	22.2	9	50.0	0	0.0	0	0.0	9	50.0	0	0.0	0	0.0	0
	2016	18	0	0.0	5	27.8	0	0.0	5	27.8	0	0.0	0	0.0	12	66.7	0	0.0	0	0.0	1
	2017	11	0	0.0	1	9.1	1	9.1	2	18.2	0	0.0	0	0.0	8	72.7	0	0.0	1	9.1	0

Note: URM stands for Under-Represented Minority and includes American Indian or Alaska Native; Black or African-American; Hispanic / Latino race/ethnicity groups

Applications - Total by Race/Ethnicity

College of Urban Planning and Public Affairs
Fall 2013 - Fall 2017



Notes: 1) URM stands for Under-Represented Minority and includes American Indian or Alaska Native; Black or African-American; Hispanic / Latino race/ethnicity groups
2) Individual URM groups, Native Hawaiian Pacific Islander, Two or More Races, and Other race/ethnicity categories left off this charts due to relatively low numbers

Applications - Admitted

by Race/Ethnicity

College of Urban Planning and Public Affairs

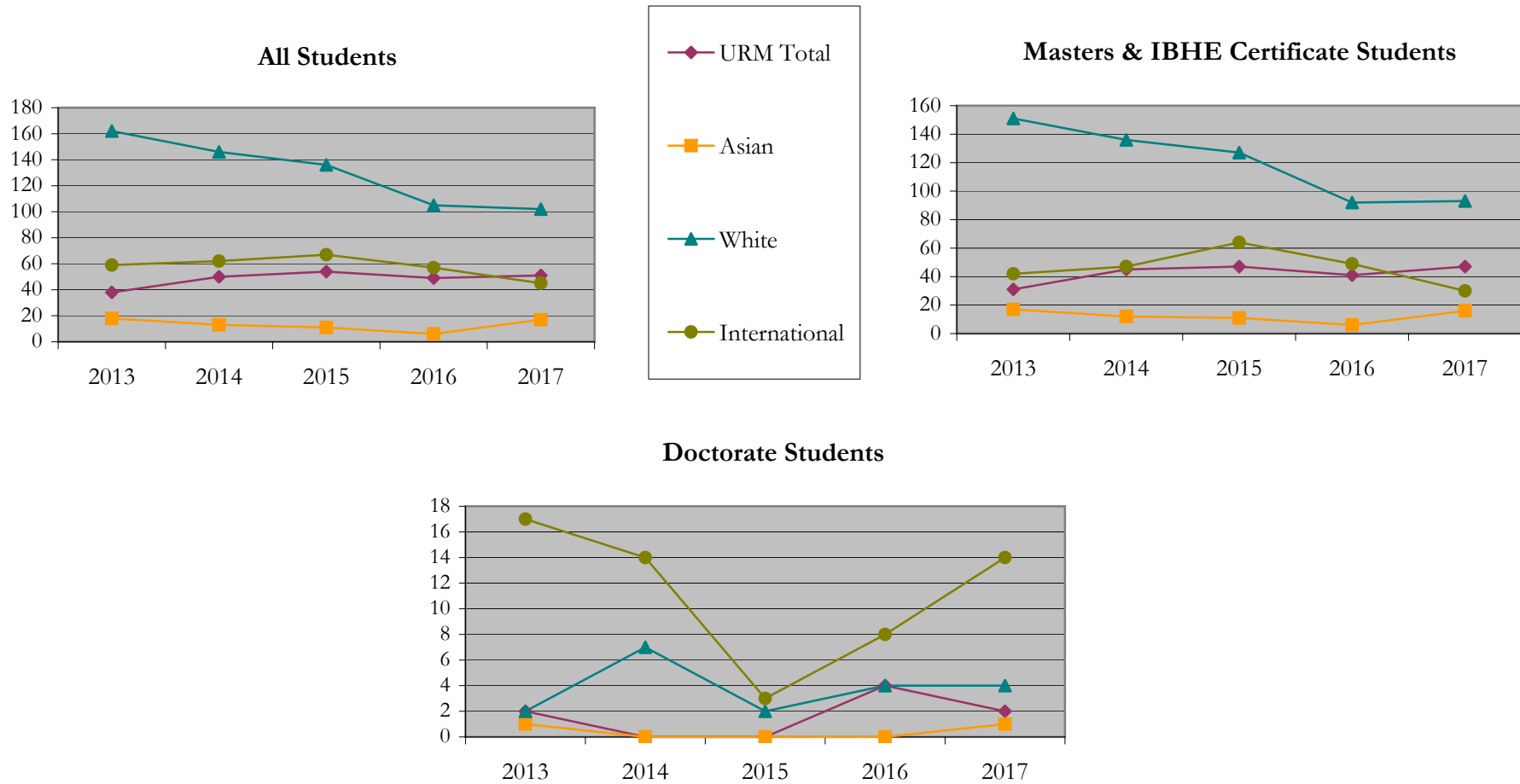
Fall 2013 - Fall 2017

		Total	Under Represented Minorities (URM)																		
			American Indian or Alaska Native		Black or African American		Hispanic / Latino		URM Total		Asian		Native Hawaiian or Pacific Islander		White		Two or More Races		International		Not Reported
			Count	%	Count	%	Count	%	Count	%	Count	%	Count	%	Count	%	Count	%	Count	%	Count
All	2013	295	0	0.0	15	5.1	23	7.8	38	12.9	18	6.1	0	0.0	162	54.9	6	2.0	59	20.0	12
	2014	296	0	0.0	18	6.1	32	10.8	50	16.9	13	4.4	1	0.3	146	49.3	7	2.4	62	20.9	17
	2015	277	0	0.0	33	11.9	21	7.6	54	19.5	11	4.0	0	0.0	136	49.1	2	0.7	67	24.2	7
	2016	233	0	0.0	23	9.9	26	11.2	49	21.0	6	2.6	0	0.0	105	45.1	7	3.0	57	24.5	9
	2017	221	0	0.0	28	12.7	23	10.4	51	23.1	17	7.7	0	0.0	102	46.2	3	1.4	45	20.4	3
Masters & IBHE Certificate	2013	258	0	0.0	13	5.0	18	7.0	31	12.0	17	6.6	0	0.0	151	58.5	6	2.3	42	16.3	11
	2014	263	0	0.0	16	6.1	29	11.0	45	17.1	12	4.6	1	0.4	136	51.7	7	2.7	47	17.9	15
	2015	256	0	0.0	29	11.3	18	7.0	47	18.4	11	4.3	0	0.0	127	49.6	2	0.8	64	25.0	5
	2016	202	0	0.0	18	8.9	23	11.4	41	20.3	6	3.0	0	0.0	92	45.5	6	3.0	49	24.3	8
	2017	191	0	0.0	27	14.1	20	10.5	47	24.6	16	8.4	0	0.0	93	48.7	3	1.6	30	15.7	2
Doctorate	2013	22	0	0.0	0	0.0	2	9.1	2	9.1	1	4.5	0	0.0	2	9.1	0	0.0	17	77.3	0
	2014	22	0	0.0	0	0.0	0	0.0	0	0.0	0	0.0	0	0.0	7	31.8	0	0.0	14	63.6	1
	2015	7	0	0.0	0	0.0	0	0.0	0	0.0	0	0.0	0	0.0	2	28.6	0	0.0	3	42.9	2
	2016	17	0	0.0	1	5.9	3	17.6	4	23.5	0	0.0	0	0.0	4	23.5	1	5.9	8	47.1	0
	2017	22	0	0.0	0	0.0	2	9.1	2	9.1	1	4.5	0	0.0	4	18.2	0	0.0	14	63.6	1
Non-Degree & Campus Certificate	2013	15	0	0.0	2	13.3	3	20.0	5	33.3	0	0.0	0	0.0	9	60.0	0	0.0	0	0.0	1
	2014	11	0	0.0	2	18.2	3	27.3	5	45.5	1	9.1	0	0.0	3	27.3	0	0.0	1	9.1	1
	2015	14	0	0.0	4	28.6	3	21.4	7	50.0	0	0.0	0	0.0	7	50.0	0	0.0	0	0.0	0
	2016	14	0	0.0	4	28.6	0	0.0	4	28.6	0	0.0	0	0.0	9	64.3	0	0.0	0	0.0	1
	2017	8	0	0.0	1	12.5	1	12.5	2	25.0	0	0.0	0	0.0	5	62.5	0	0.0	1	12.5	0

Note: URM stands for Under-Represented Minority and includes American Indian or Alaska Native; Black or African-American; Hispanic / Latino race/ethnicity groups

Applications - Admitted by Race/Ethnicity

College of Urban Planning and Public Affairs
Fall 2013 - Fall 2017



Notes: 1) URM stands for Under-Represented Minority and includes American Indian or Alaska Native; Black or African-American; Hispanic / Latino race/ethnicity groups
2) Individual URM groups, Native Hawaiian Pacific Islander, Two or More Races, and Other race/ethnicity categories left off this charts due to relatively low numbers

**Enrollment - New
by Race/Ethnicity**

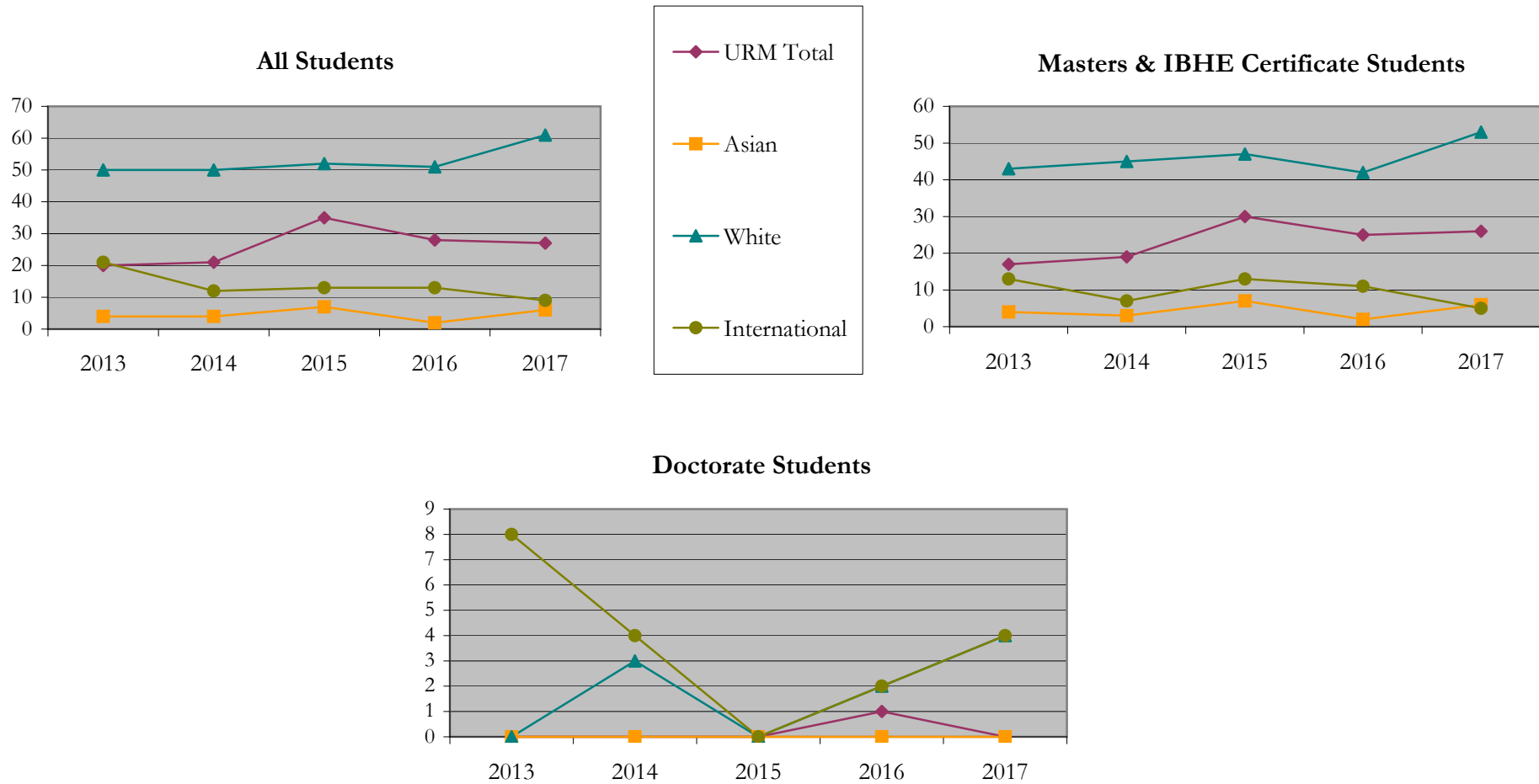
College of Urban Planning and Public Affairs
Fall 2013 - Fall 2017

		Total	Under Represented Minorities (URM)								Asian		Native Hawaiian or Pacific Islander		White		Two or More Races		International		Not Reported
			American Indian or Alaska Native		Black or African American		Hispanic / Latino		URM Total												
			Count	%	Count	%	Count	%	Count	%											
All	2013	100	0	0.0	11	11.0	9	9.0	20	20.0	4	4.0	0	0.0	50	50.0	2	2.0	21	21.0	3
	2014	98	0	0.0	7	7.1	14	14.3	21	21.4	4	4.1	0	0.0	50	51.0	5	5.1	12	12.2	6
	2015	108	0	0.0	21	19.4	14	13.0	35	32.4	7	6.5	0	0.0	52	48.1	0	0.0	13	12.0	1
	2016	97	0	0.0	13	13.4	15	15.5	28	28.9	2	2.1	0	0.0	51	52.6	0	0.0	13	13.4	3
	2017	105	0	0.0	15	14.3	12	11.4	27	25.7	6	5.7	0	0.0	61	58.1	0	0.0	9	8.6	2
Masters & IBHE Certificate	2013	81	0	0.0	10	12.3	7	8.6	17	21.0	4	4.9	0	0.0	43	53.1	2	2.5	13	16.0	2
	2014	83	0	0.0	7	8.4	12	14.5	19	22.9	3	3.6	0	0.0	45	54.2	4	4.8	7	8.4	5
	2015	98	0	0.0	18	18.4	12	12.2	30	30.6	7	7.1	0	0.0	47	48.0	0	0.0	13	13.3	1
	2016	82	0	0.0	11	13.4	14	17.1	25	30.5	2	2.4	0	0.0	42	51.2	0	0.0	11	13.4	2
	2017	91	0	0.0	15	16.5	11	12.1	26	28.6	6	6.6	0	0.0	53	58.2	0	0.0	5	5.5	1
Doctorate	2013	8	0	0.0	0	0.0	0	0.0	0	0.0	0	0.0	0	0.0	0	0.0	0	0.0	8	100.0	0
	2014	7	0	0.0	0	0.0	0	0.0	0	0.0	0	0.0	0	0.0	3	42.9	0	0.0	4	57.1	0
	2015	0	0	0.0	0	0.0	0	0.0	0	0.0	0	0.0	0	0.0	0	0.0	0	0.0	0	0.0	0
	2016	5	0	0.0	0	0.0	1	20.0	1	20.0	0	0.0	0	0.0	2	40.0	0	0.0	2	40.0	0
	2017	9	0	0.0	0	0.0	0	0.0	0	0.0	0	0.0	0	0.0	4	44.4	0	0.0	4	44.4	1
Non-Degree & Campus Certificate	2013	11	0	0.0	1	9.1	2	18.2	3	27.3	0	0.0	0	0.0	7	63.6	0	0.0	0	0.0	1
	2014	8	0	0.0	0	0.0	2	25.0	2	25.0	1	12.5	0	0.0	2	25.0	1	12.5	1	12.5	1
	2015	10	0	0.0	3	30.0	2	20.0	5	50.0	0	0.0	0	0.0	5	50.0	0	0.0	0	0.0	0
	2016	10	0	0.0	2	20.0	0	0.0	2	20.0	0	0.0	0	0.0	7	70.0	0	0.0	0	0.0	1
	2017	5	0	0.0	0	0.0	1	20.0	1	20.0	0	0.0	0	0.0	4	80.0	0	0.0	0	0.0	0

Note: URM stands for Under-Represented Minority and includes American Indian or Alaska Native; Black or African-American; Hispanic / Latino race/ethnicity groups

Enrollment - New by Race/Ethnicity

College of Urban Planning and Public Affairs
Fall 2013 - Fall 2017



Notes: 1) URM stands for Under-Represented Minority and includes American Indian or Alaska Native; Black or African-American; Hispanic / Latino race/ethnicity groups

2) Individual URM groups, Native Hawaiian Pacific Islander, Two or More Races, and Other race/ethnicity categories left off this charts due to relatively low numbers

**Enrollment - Total
by Race/Ethnicity**

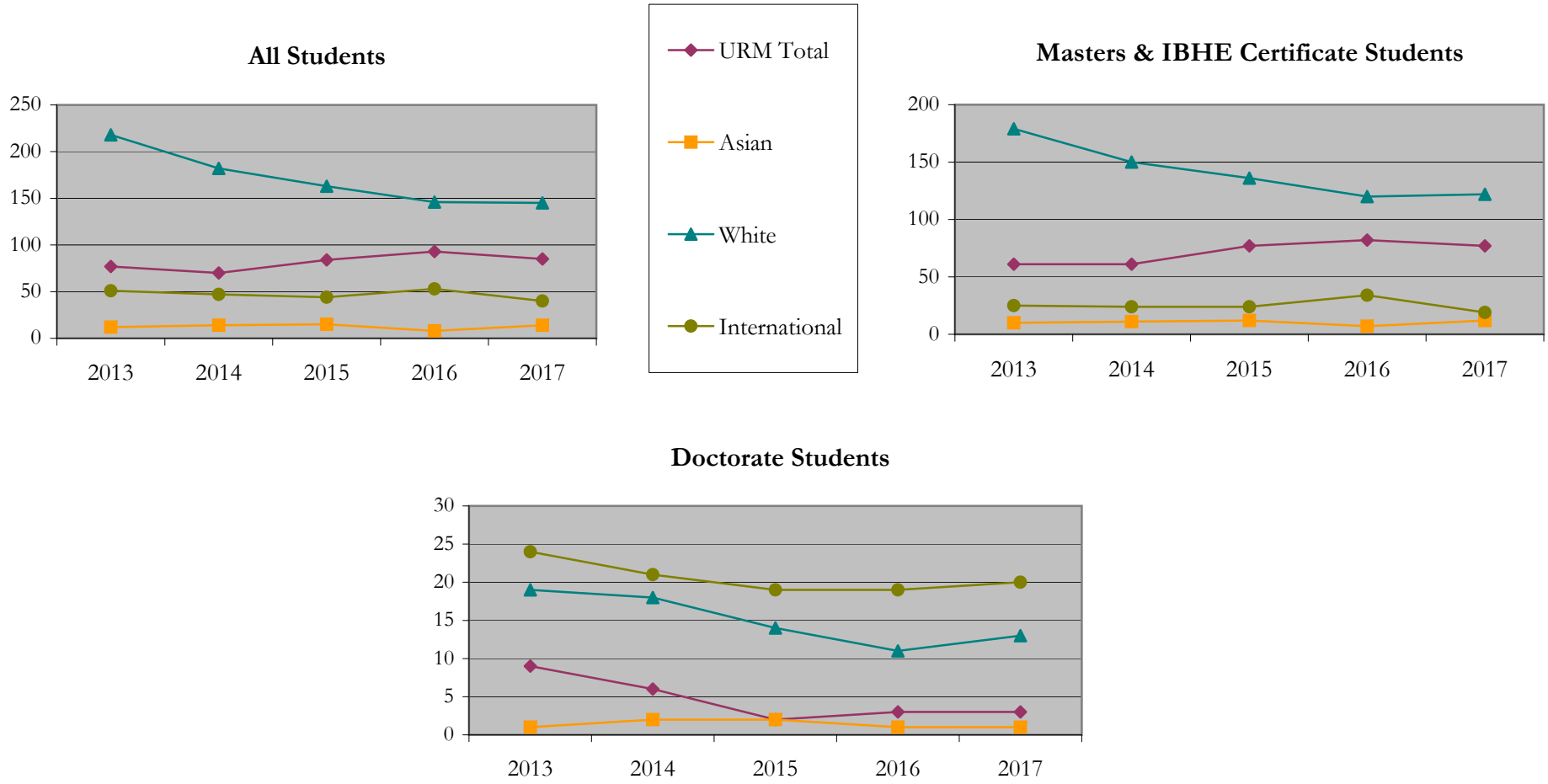
College of Urban Planning and Public Affairs
Fall 2013 - Fall 2017

		Total	Under Represented Minorities (URM)								Asian		Native Hawaiian or Pacific Islander		White		Two or More Races		International		Not Reported
			American Indian or Alaska Native		Black or African American		Hispanic / Latino		URM Total												
			Count	%	Count	%	Count	%	Count	%											
All	2013	380	0	0.0	37	9.7	40	10.5	77	20.3	12	3.2	0	0.0	218	57.4	12	3.2	51	13.4	10
	2014	331	1	0.3	32	9.7	37	11.2	70	21.1	14	4.2	0	0.0	182	55.0	8	2.4	47	14.2	10
	2015	320	1	0.3	45	14.1	38	11.9	84	26.3	15	4.7	0	0.0	163	50.9	6	1.9	44	13.8	8
	2016	309	0	0.0	45	14.6	48	15.5	93	30.1	8	2.6	0	0.0	146	47.2	3	1.0	53	17.2	6
	2017	289	0	0.0	39	13.5	46	15.9	85	29.4	14	4.8	0	0.0	145	50.2	2	0.7	40	13.8	3
Masters & IBHE Certificate	2013	291	0	0.0	29	10.0	32	11.0	61	21.0	10	3.4	0	0.0	179	61.5	9	3.1	25	8.6	7
	2014	262	1	0.4	28	10.7	32	12.2	61	23.3	11	4.2	0	0.0	150	57.3	7	2.7	24	9.2	9
	2015	261	1	0.4	41	15.7	35	13.4	77	29.5	12	4.6	0	0.0	136	52.1	4	1.5	24	9.2	8
	2016	249	0	0.0	40	16.1	42	16.9	82	32.9	7	2.8	0	0.0	120	48.2	2	0.8	34	13.7	4
	2017	233	0	0.0	37	15.9	40	17.2	77	33.0	12	5.2	0	0.0	122	52.4	1	0.4	19	8.2	2
Doctorate	2013	55	0	0.0	5	9.1	4	7.3	9	16.4	1	1.8	0	0.0	19	34.5	1	1.8	24	43.6	1
	2014	47	0	0.0	3	6.4	3	6.4	6	12.8	2	4.3	0	0.0	18	38.3	0	0.0	21	44.7	0
	2015	38	0	0.0	1	2.6	1	2.6	2	5.3	2	5.3	0	0.0	14	36.8	1	2.6	19	50.0	0
	2016	35	0	0.0	1	2.9	2	5.7	3	8.6	1	2.9	0	0.0	11	31.4	1	2.9	19	54.3	0
	2017	38	0	0.0	1	2.6	2	5.3	3	7.9	1	2.6	0	0.0	13	34.2	0	0.0	20	52.6	1
Non-Degree & Campus Certificate	2013	34	0	0.0	3	8.8	4	11.8	7	20.6	1	2.9	0	0.0	20	58.8	2	5.9	2	5.9	2
	2014	22	0	0.0	1	4.5	2	9.1	3	13.6	1	4.5	0	0.0	14	63.6	1	4.5	2	9.1	1
	2015	21	0	0.0	3	14.3	2	9.5	5	23.8	1	4.8	0	0.0	13	61.9	1	4.8	1	4.8	0
	2016	25	0	0.0	4	16.0	4	16.0	8	32.0	0	0.0	0	0.0	15	60.0	0	0.0	0	0.0	2
	2017	18	0	0.0	1	5.6	4	22.2	5	27.8	1	5.6	0	0.0	10	55.6	1	5.6	1	5.6	0

Note: URM stands for Under-Represented Minority and includes American Indian or Alaska Native; Black or African-American; Hispanic / Latino race/ethnicity groups

Enrollment - Total by Race/Ethnicity

College of Urban Planning and Public Affairs
Fall 2013 - Fall 2017



Notes: 1) URM stands for Under-Represented Minority and includes American Indian or Alaska Native; Black or African-American; Hispanic / Latino race/ethnicity groups
2) Individual URM groups, Native Hawaiian Pacific Islander, Two or More Races, and Other race/ethnicity categories left off this charts due to relatively low numbers

Enrollment

by Student Type, Enrollment Time, and Gender

College of Urban Planning and Public Affairs

Fall 2013 - Fall 2017

		Total	New		Continuing		Male		Female		Gender Not Reported	Part-time		Full-time	
			Count	%	Count	%	Count	%	Count	%		Count	%	Count	%
All	2013	380	100	26.3	280	73.7	181	47.6	199	52.4	0	149	39.2	231	60.8
	2014	331	98	29.6	233	70.4	152	45.9	179	54.1	0	131	39.6	200	60.4
	2015	320	108	33.8	212	66.3	149	46.6	169	52.8	2	118	36.9	202	63.1
	2016	309	97	31.4	212	68.6	142	46.0	164	53.1	3	92	29.8	217	70.2
	2017	289	105	36.3	184	63.7	129	44.6	159	55.0	1	89	30.8	200	69.2
Masters & IBHE Certificate	2013	291	81	27.8	210	72.2	144	49.5	147	50.5	0	101	34.7	190	65.3
	2014	262	83	31.7	179	68.3	127	48.5	135	51.5	0	97	37.0	165	63.0
	2015	261	98	37.5	163	62.5	127	48.7	132	50.6	2	82	31.4	179	68.6
	2016	249	82	32.9	167	67.1	113	45.4	133	53.4	3	64	25.7	185	74.3
	2017	233	91	39.1	142	60.9	109	46.8	123	52.8	1	67	28.8	166	71.2
Doctorate	2013	55	8	14.5	47	85.5	21	38.2	34	61.8	0	23	41.8	32	58.2
	2014	47	7	14.9	40	85.1	17	36.2	30	63.8	0	17	36.2	30	63.8
	2015	38	0	0.0	38	100.0	15	39.5	23	60.5	0	18	47.4	20	52.6
	2016	35	5	14.3	30	85.7	15	42.9	20	57.1	0	16	45.7	19	54.3
	2017	38	9	23.7	29	76.3	17	44.7	21	55.3	0	11	28.9	27	71.1
Non-Degree & Campus Certificate	2013	34	11	32.4	23	67.6	16	47.1	18	52.9	0	25	73.5	9	26.5
	2014	22	8	36.4	14	63.6	8	36.4	14	63.6	0	17	77.3	5	22.7
	2015	21	10	47.6	11	52.4	7	33.3	14	66.7	0	18	85.7	3	14.3
	2016	25	10	40.0	15	60.0	14	56.0	11	44.0	0	12	48.0	13	52.0
	2017	18	5	27.8	13	72.2	3	16.7	15	83.3	0	11	61.1	7	38.9

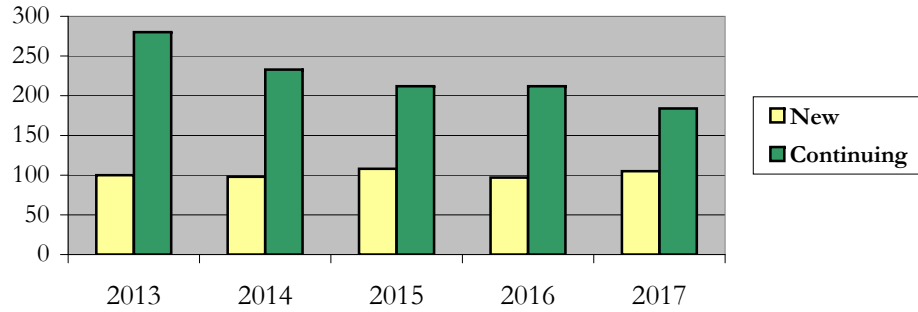
Enrollment

by Student Type, Enrollment Time, and Gender (All Students)

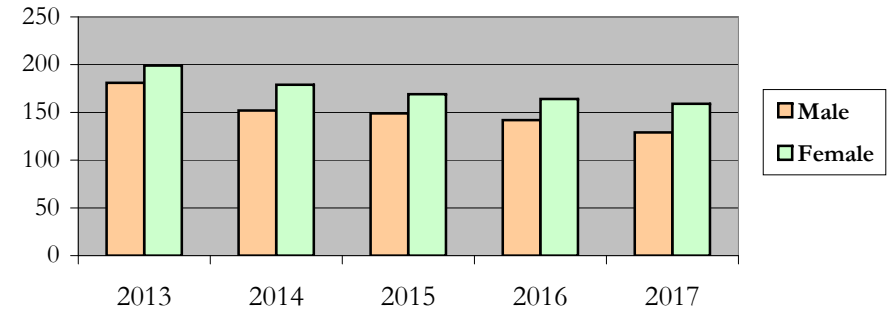
College of Urban Planning and Public Affairs

Fall 2013 - Fall 2017

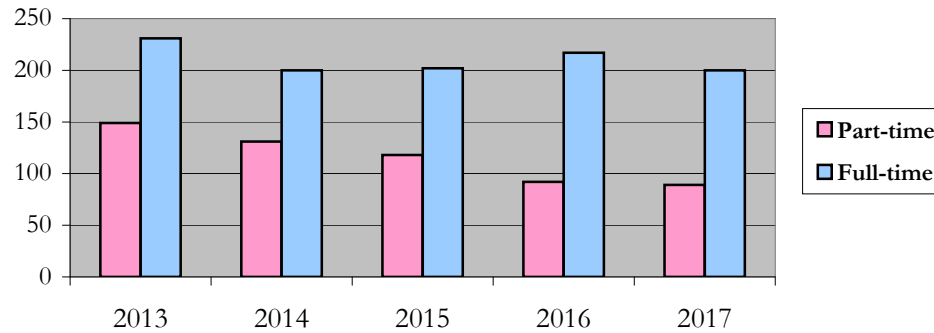
New and Continuing Enrollment



Enrollment by Gender



Enrollment by Student Enrollment Time



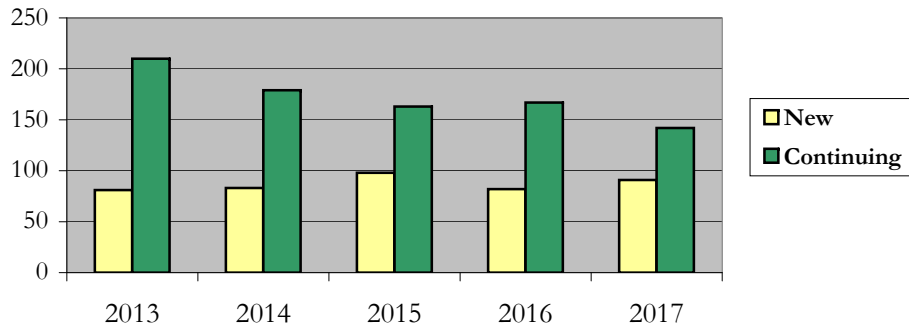
Enrollment

by Student Type, Enrollment Time, and Gender (Master's Students)

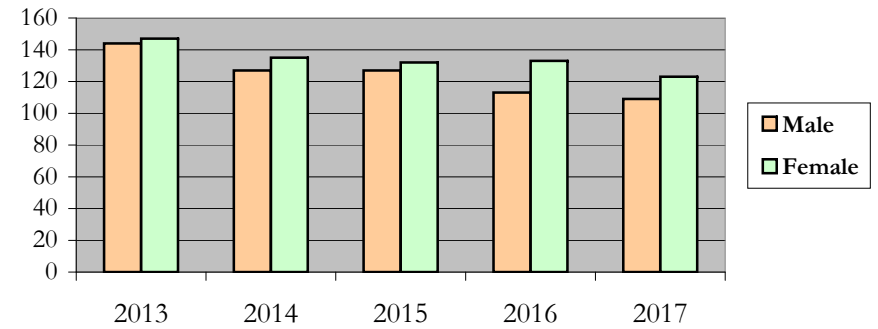
College of Urban Planning and Public Affairs

Fall 2013 - Fall 2017

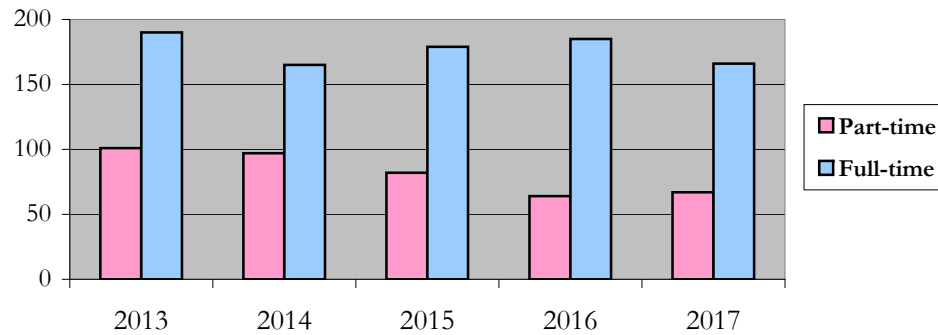
New and Continuing Enrollment



Enrollment by Gender



Enrollment by Student Enrollment Time



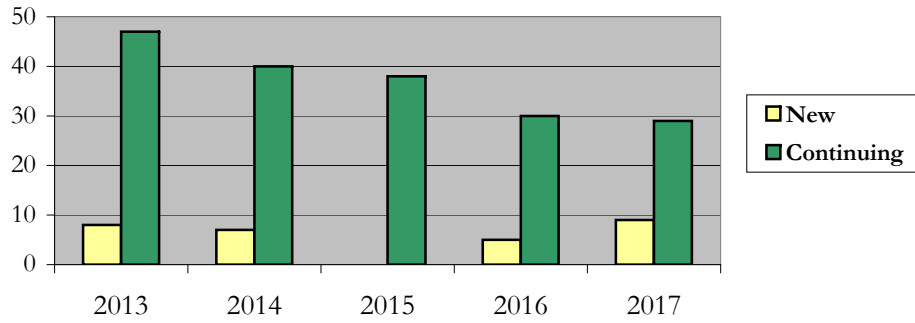
Enrollment

by Student Type, Enrollment Time, and Gender (Doctorate Students)

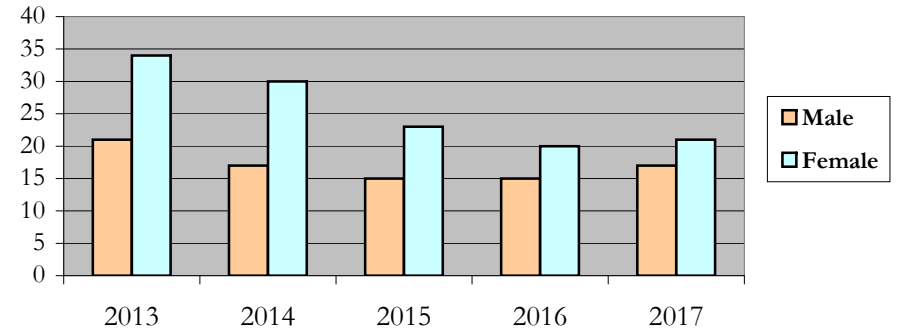
College of Urban Planning and Public Affairs

Fall 2013 - Fall 2017

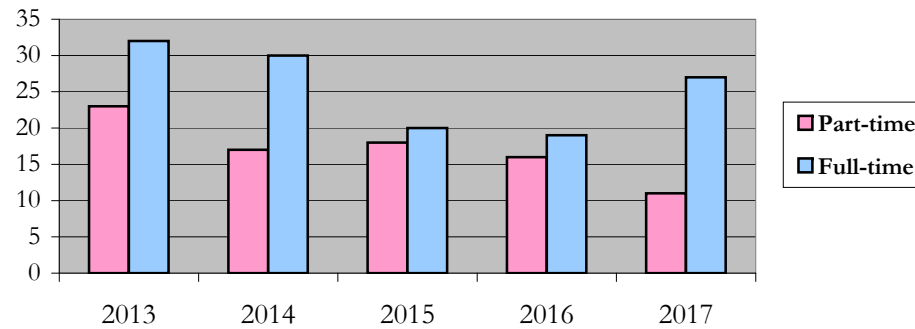
New and Continuing Enrollment



Enrollment by Gender



Enrollment by Student Enrollment Time



Degrees Conferred by Race/Ethnicity

College of Urban Planning and Public Affairs

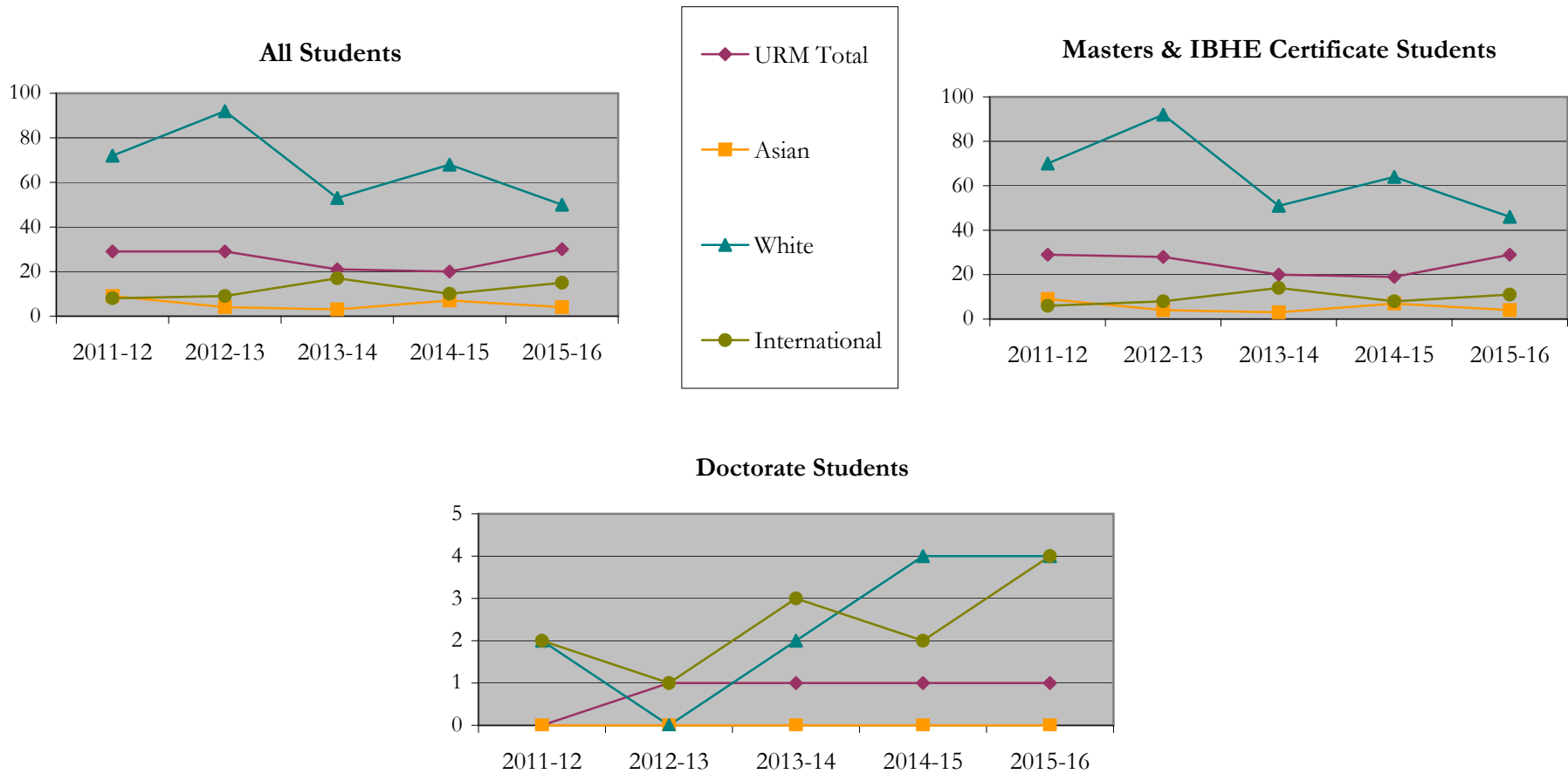
Fall 2013 - Fall 2017

		Total	Under Represented Minorities (URM)								Asian	Native Hawaiian or Pacific Islander		White		Two or More Races		International		Not Reported	
			American Indian or Alaska Native		Black or African American		Hispanic / Latino		URM Total			Count	%	Count	%	Count	%	Count	%	Count	%
			Count	%	Count	%	Count	%	Count	%											
All	2012 - 13	121	0	0.0	15	12.4	14	11.6	29	24.0	9	7.4	0	0.0	72	59.5	1	0.8	8	6.6	2
	2013 - 14	142	0	0.0	11	7.7	18	12.7	29	20.4	4	2.8	0	0.0	92	64.8	5	3.5	9	6.3	3
	2014 - 15	97	0	0.0	8	8.2	13	13.4	21	21.6	3	3.1	0	0.0	53	54.6	2	2.1	17	17.5	1
	2015 - 16	114	0	0.0	9	7.9	11	9.6	20	17.5	7	6.1	0	0.0	68	59.6	5	4.4	10	8.8	4
	2016 - 17	103	0	0.0	15	14.6	15	14.6	30	29.1	4	3.9	0	0.0	50	48.5	3	2.9	15	14.6	1
Masters & IBHE Certificate	2012 - 13	117	0	0.0	15	12.8	14	12.0	29	24.8	9	7.7	0	0.0	70	59.8	1	0.9	6	5.1	2
	2013 - 14	140	0	0.0	10	7.1	18	12.9	28	20.0	4	2.9	0	0.0	92	65.7	5	3.6	8	5.7	3
	2014 - 15	91	0	0.0	7	7.7	13	14.3	20	22.0	3	3.3	0	0.0	51	56.0	2	2.2	14	15.4	1
	2015 - 16	107	0	0.0	9	8.4	10	9.3	19	17.8	7	6.5	0	0.0	64	59.8	5	4.7	8	7.5	4
	2016 - 17	94	0	0.0	14	14.9	15	16.0	29	30.9	4	4.3	0	0.0	46	48.9	3	3.2	11	11.7	1
Doctorate	2012 - 13	4	0	0.0	0	0.0	0	0.0	0	0.0	0	0.0	0	0.0	2	50.0	0	0.0	2	50.0	0
	2013 - 14	2	0	0.0	1	50.0	0	0.0	1	50.0	0	0.0	0	0.0	0	0.0	0	0.0	1	50.0	0
	2014 - 15	6	0	0.0	1	16.7	0	0.0	1	16.7	0	0.0	0	0.0	2	33.3	0	0.0	3	50.0	0
	2015 - 16	7	0	0.0	0	0.0	1	14.3	1	14.3	0	0.0	0	0.0	4	57.1	0	0.0	2	28.6	0
	2016 - 17	9	0	0.0	1	11.1	0	0.0	1	11.1	0	0.0	0	0.0	4	44.4	0	0.0	4	44.4	0
Non-Degree & Campus Certificate	2012 - 13	0	0	0.0	0	0.0	0	0.0	0	0.0	0	0.0	0	0.0	0	0.0	0	0.0	0	0.0	0
	2013 - 14	0	0	0.0	0	0.0	0	0.0	0	0.0	0	0.0	0	0.0	0	0.0	0	0.0	0	0.0	0
	2014 - 15	0	0	0.0	0	0.0	0	0.0	0	0.0	0	0.0	0	0.0	0	0.0	0	0.0	0	0.0	0
	2015 - 16	0	0	0.0	0	0.0	0	0.0	0	0.0	0	0.0	0	0.0	0	0.0	0	0.0	0	0.0	0
	2016 - 17	0	0	0.0	0	0.0	0	0.0	0	0.0	0	0.0	0	0.0	0	0.0	0	0.0	0	0.0	0

Note: Each row represents a fiscal year, beginning with Summer term and ending with Spring.

Degrees Conferred by Race/Ethnicity

College of Urban Planning and Public Affairs
Fall 2013 - Fall 2017



Notes: 1) URM stands for Under-Represented Minority and includes American Indian or Alaska Native; Black or African-American; Hispanic / Latino race/ethnicity groups
2) Individual URM groups, Native Hawaiian Pacific Islander, Two or More Races, and Other race/ethnicity categories left off this charts due to relatively low numbers

Degrees Conferred

by Gender

College of Urban Planning and Public Affairs

Fall 2013 - Fall 2017

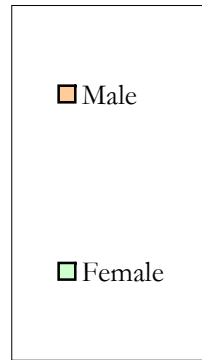
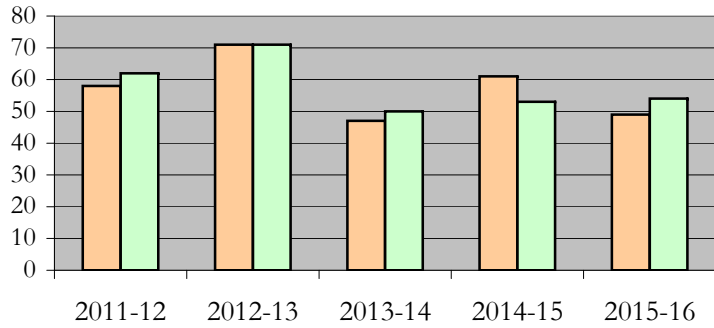
		Total	Male		Female		Not Reported
			Count	%	Count	%	
All	2012 - 13	121	58	47.9	62	51.2	1
	2013 - 14	142	71	50.0	71	50.0	0
	2014 - 15	97	47	48.5	50	51.5	0
	2015 - 16	114	61	53.5	53	46.5	0
	2016 - 17	103	49	47.6	54	52.4	0
Masters & IBHE Certificate	2012 - 13	117	56	47.9	60	51.3	1
	2013 - 14	140	71	50.7	69	49.3	0
	2014 - 15	91	44	48.4	47	51.6	0
	2015 - 16	107	60	56.1	47	43.9	0
	2016 - 17	94	45	47.9	49	52.1	0
Doctorate	2012 - 13	4	2	50.0	2	50.0	0
	2013 - 14	2	0	0.0	2	100.0	0
	2014 - 15	6	3	50.0	3	50.0	0
	2015 - 16	7	1	14.3	6	85.7	0
	2016 - 17	9	4	44.4	5	55.6	0
Campus Certificates	2012 - 13	0	0	0.0	0	0.0	0
	2013 - 14	0	0	0.0	0	0.0	0
	2014 - 15	0	0	0.0	0	0.0	0
	2015 - 16	0	0	0.0	0	0.0	0
	2016 - 17	0	0	0.0	0	0.0	0

Note: Each row represents a fiscal year, beginning with Summer term and ending with Spring.

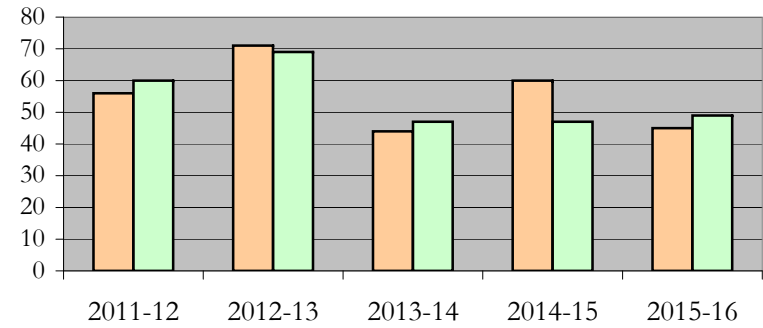
Degrees Conferred by Gender

College of Urban Planning and Public Affairs
Fall 2013 - Fall 2017

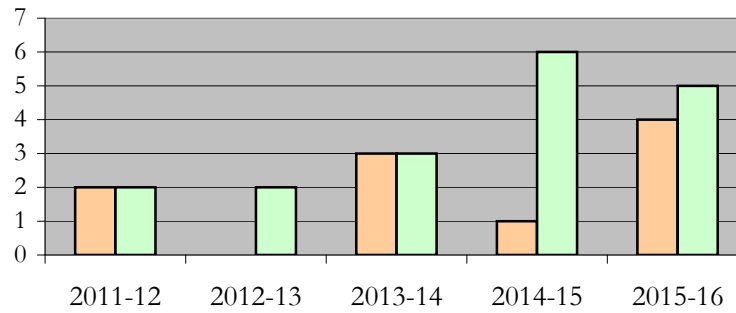
All Students



Masters & IBHE Certificate Students



Doctorate Students



Appendix A

College of Urban Planning and Public Affairs

Fall 2013 - Fall 2017

List of program codes included in this document

20FS0339MPA

20FS0339NDEG

20FS0339PHD

20FS1785PHD

20FS1786MUPP

20FS1786NDEG

20FS5209NDEG

20FS5211NDEU

20FS5249NDEU

20FS5455NDEG

Notes: 1) Program codes are sorted by alphabetical order in column-wise fashion

2) Program codes highlighted in yellow did not have applications, enrollment, nor degrees conferred in the covered period