

Matriculation

Diversity Pipeline

Urban_Planning_and_Policy_MUPP [20FS1786MUPP]

Fall 2014 - Fall 2018

Fall Semester Year	Applied					Admitted					Non-URM Admitted to Applied Yield %	URM Admitted to Applied Yield %	New Enrollment					Non-URM Enrolled to Admitted Yield %	URM Enrolled to Admitted Yield %	Total Enrollment				
	Grand Total	Non-URM Total		URM Total		Grand Total	Non-URM Total		URM Total				Grand Total	Non-URM Total		URM Total				Grand Total	Non-URM Total		URM Total	
		Count	%	Count	%		Count	%	Count	%				Count	%	Count	%				Count	%	Count	%
	Count	%	Count	%	Count	%	Count	%	Count	%			Count	%	Count	%	Count			%	Count	%		
2014	220	182	82.7%	38	17.3%	172	149	86.6%	23	13.4%	81.9%	60.5%	50	44	88.0%	6	12.0%	29.5%	26.1%	153	126	82.4%	27	17.6%
2015	198	167	84.3%	31	15.7%	170	145	85.3%	25	14.7%	86.8%	80.6%	63	47	74.6%	16	25.4%	32.4%	64.0%	162	119	73.5%	43	26.5%
2016	171	137	80.1%	34	19.9%	138	110	79.7%	28	20.3%	80.3%	82.4%	50	36	72.0%	14	28.0%	32.7%	50.0%	149	102	68.5%	47	31.5%
2017	155	125	80.6%	30	19.4%	133	110	82.7%	23	17.3%	88.0%	76.7%	61	46	75.4%	15	24.6%	41.8%	65.2%	140	100	71.4%	40	28.6%
2018	138	113	81.9%	25	18.1%	122	101	82.8%	21	17.2%	89.4%	84.0%	43	31	72.1%	12	27.9%	30.7%	57.1%	126	90	71.4%	36	28.6%
Average	176	145	82.1%	32	17.9%	147	123	83.7%	24	16.3%	84.9%	75.9%	53	41	76.4%	13	23.6%	33.2%	52.5%	146	107	73.6%	38.6	26.4%

Note: URM stands for Under-Represented Minority and includes American Indian or Alaska Native; Black or African-American; Hispanic / Latino race/ethnicity groups

Applications, Admission, & New Enrollment Yields

by Race/Ethnicity & Gender

Urban_Planning_and_Policy_MUPP [20FS1786MUPP]

Fall 2014 - Fall 2018

	Fall Semester Year	Total	Under Represented Minorities (URM)										Race/Eth Not Reported	Male	Female											
			American Indian or Alaska Native		Black or African American		Hispanic / Latino		URM Total		Asian					Native Hawaiian or Pacific Islander		White		Two or More Races		International				
			Count	% Yield	Count	% Yield	Count	% Yield	Count	% Yield	Count	% Yield	Count	% Yield	Count	% Yield	Count	% Yield	Count	% Yield	Count	% Yield	Count	% Yield	Count	% Yield
Applied	2014	220	0		18		20		38		6		1		121		6		35		13		109		109	
	2015	198	0		18		13		31		10		0		104		3		47		3		105		90	
	2016	171	0		13		21		34		5		0		78		2		47		5		74		97	
	2017	155	0		12		18		30		13		0		74		2		34		2		80		73	
	2018	138	0		9		16		25		5		0		43		1		21		43		69		69	
Admitted	2014	172	78.2	0	0.0	7	38.9	16	80.0	23	60.5	4	66.7	1	100.0	102	84.3	5	83.3	25	71.4	12	85	78.0	85	78.0
	2015	170	85.9	0	0.0	15	83.3	10	76.9	25	80.6	9	90.0	0	0.0	96	92.3	2	66.7	35	74.5	3	89	84.8	79	87.8
	2016	138	80.7	0	0.0	10	76.9	18	85.7	28	82.4	4	80.0	0	0.0	70	89.7	2	100.0	30	63.8	4	62	83.8	76	78.4
	2017	133	85.8	0	0.0	9	75.0	14	77.8	23	76.7	10	76.9	0	0.0	70	94.6	2	100.0	26	76.5	2	69	86.3	63	86.3
	2018	122	88.4	0	0.0	8	88.9	13	81.3	21	84.0	5	100.0	0	0.0	43	100.0	1	100.0	12	57.1	40	62	89.9	60	87.0
Enrolled	2014	50	29.1	0	0.0	2	28.6	4	25.0	6	26.1	1	25.0	0	0.0	31	30.4	3	60.0	5	20.0	4	27	31.8	23	27.1
	2015	63	37.1	0	0.0	9	60.0	7	70.0	16	64.0	5	55.6	0	0.0	31	32.3	0	0.0	10	28.6	1	29	32.6	33	41.8
	2016	50	36.2	0	0.0	5	50.0	9	50.0	14	50.0	1	25.0	0	0.0	28	40.0	0	0.0	7	23.3	0	26	41.9	24	31.6
	2017	61	45.9	0	0.0	6	66.7	9	64.3	15	65.2	2	20.0	0	0.0	38	54.3	0	0.0	5	19.2	1	38	55.1	23	36.5
	2018	43	35.2	0	0.0	7	87.5	5	38.5	12	57.1	3	60.0	0	0.0	26	60.5	1	100.0	1	8.3	0	22	35.5	21	35.0

Notes:

- 1) URM stands for Under-Represented Minority and includes American Indian or Alaska Native; Black or African-American; Hispanic / Latino race/ethnicity groups
- 2) Unreported Gender identification is not shown; Male and Female total may not match Total
- 3) In rare situations, the "% Yield" columns may be greater than 100. There are three potential reasons for this:
 - a) Students that received Graduate College approved transfers may not have an admission record for the program that they enrolled into.
 - b) Students with a secondary curriculum enrollment may not have an admission record for that secondary program.
 - c) Students who were newly enrolled in the summer term prior to the fall were added to the fall new enrollment totals.

Applications, Admission, & New Enrollment Yields, cont. by Race/Ethnicity & Gender

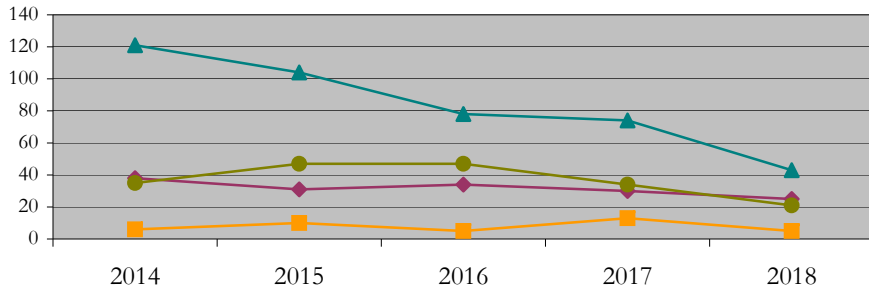
Urban_Planning_and_Policy_MUPP [20FS1786MUPP]

Fall 2014 - Fall 2018

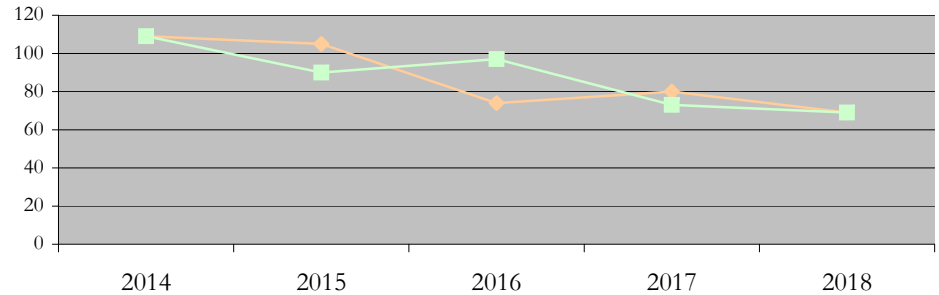
URM Total Asian White International

Male Female

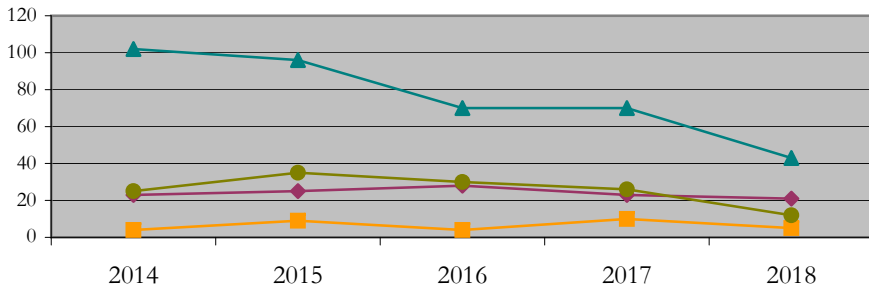
Applications by Race/Ethnicity



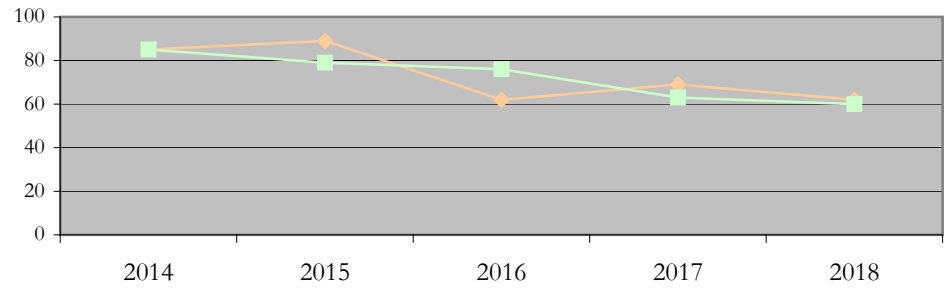
Applications by Gender



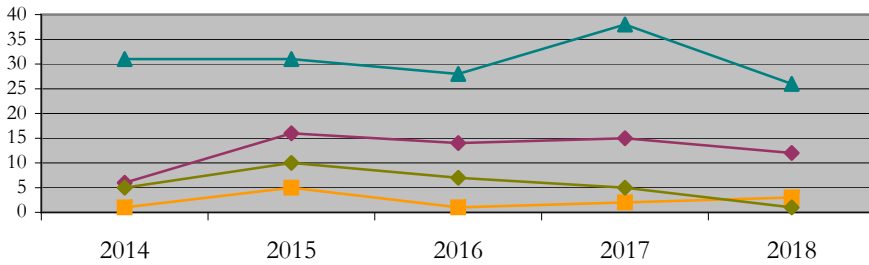
Admissions by Race/Ethnicity



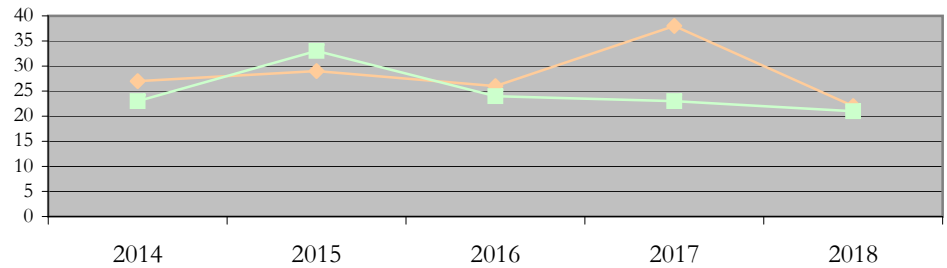
Admissions by Gender



New Enrollments by Race/Ethnicity



New Enrollments by Gender



Notes: 1) URM stands for Under-Represented Minority and includes American Indian or Alaska Native; Black or African-American; Hispanic / Latino race/ethnicity groups
2) Individual URM groups, Native Hawaiian Pacific Islander, Two or More Races, and Other race/ethnicity categories left off these charts due to relatively low numbers

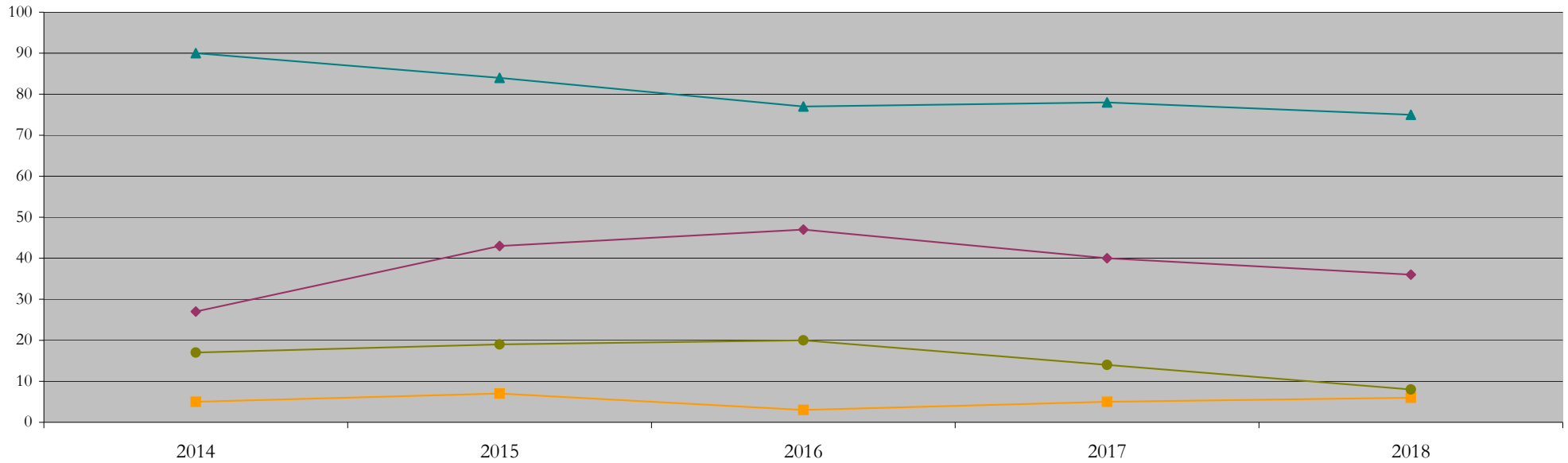
Total Enrollment (includes secondary curriculum)

by Race/Ethnicity

Urban_Planning_and_Policy_MUPP [20FS1786MUPP]

Fall 2014 - Fall 2018

Fall Semester Year	Total	Under Represented Minorities (URM)																		
		American Indian or Alaska Native		Black or African American		Hispanic / Latino		URM Total		Asian		Native Hawaiian or Pacific Islander		White		Two or More Races		International		Race/Eth Not Reported
		Count	%	Count	%	Count	%	Count	%	Count	%	Count	%	Count	%	Count	%	Count	%	Count
2014	153	0	0.0	12	7.8	15	9.8	27	17.6	5	3.3	0	0.0	90	58.8	6	3.9	17	11.1	8
2015	162	0	0.0	23	14.2	20	12.3	43	26.5	7	4.3	0	0.0	84	51.9	3	1.9	19	11.7	6
2016	149	0	0.0	24	16.1	23	15.4	47	31.5	3	2.0	0	0.0	77	51.7	1	0.7	20	13.4	1
2017	140	0	0.0	16	11.4	24	17.1	40	28.6	5	3.6	0	0.0	78	55.7	1	0.7	14	10.0	2
2018	126	0	0.0	16	12.7	20	15.9	36	28.6	6	4.8	0	0.0	75	59.5	1	0.8	8	6.3	0



Notes: 1) URM stands for Under-Represented Minority and includes American Indian or Alaska Native; Black or African-American; Hispanic / Latino race/ethnicity groups
 2) Individual URM groups, Native Hawaiian Pacific Islander, Two or More Races, and Other race/ethnicity categories left off this chart due to relatively low numbers

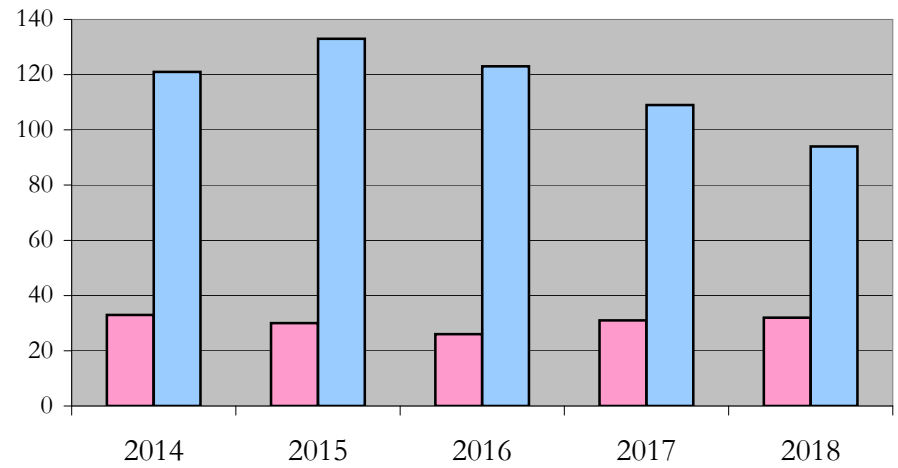
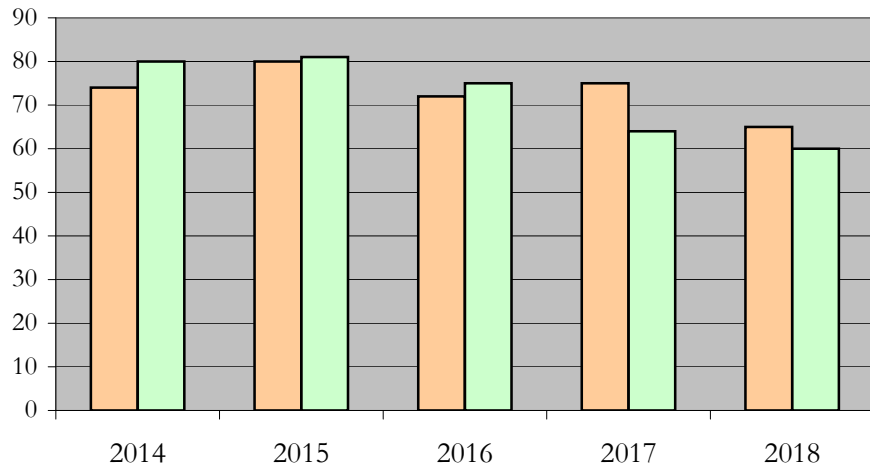
Total Enrollment (includes secondary curriculum)

by Student Type, Gender, and Enrollment Time

Urban_Planning_and_Policy_MUPP [20FS1786MUPP]

Fall 2014 - Fall 2018

Fall Semester Year	Total	New		Continuing		Male		Female		Gender Not Reported	Part-time		Full-time	
		Count	%	Count	%	Count	%	Count	%	Count	Count	%	Count	%
2014	153	50	32.7	103	67.3	74	48.4	80	52.3	-1	33	21.6	121	79.1
2015	162	63	38.9	99	61.1	80	49.4	81	50.0	1	30	18.5	133	82.1
2016	149	50	33.6	99	66.4	72	48.3	75	50.3	2	26	17.4	123	82.6
2017	140	61	43.6	79	56.4	75	53.6	64	45.7	1	31	22.1	109	77.9
2018	126	43	34.1	83	65.9	65	51.6	60	47.6	1	32	25.4	94	74.6



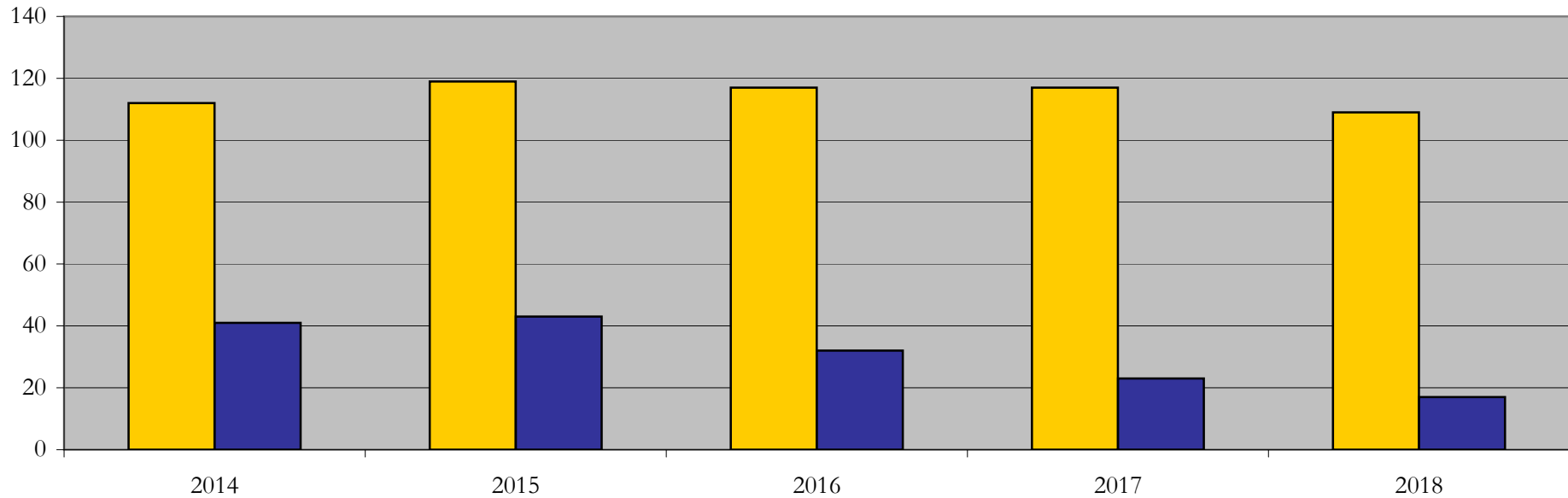
Enrollment & Degrees Conferred

by Primary/Secondary, Average Age, State Residency

Urban_Planning_and_Policy_MUPP [20FS1786MUPP]

Fall 2014 - Fall 2018

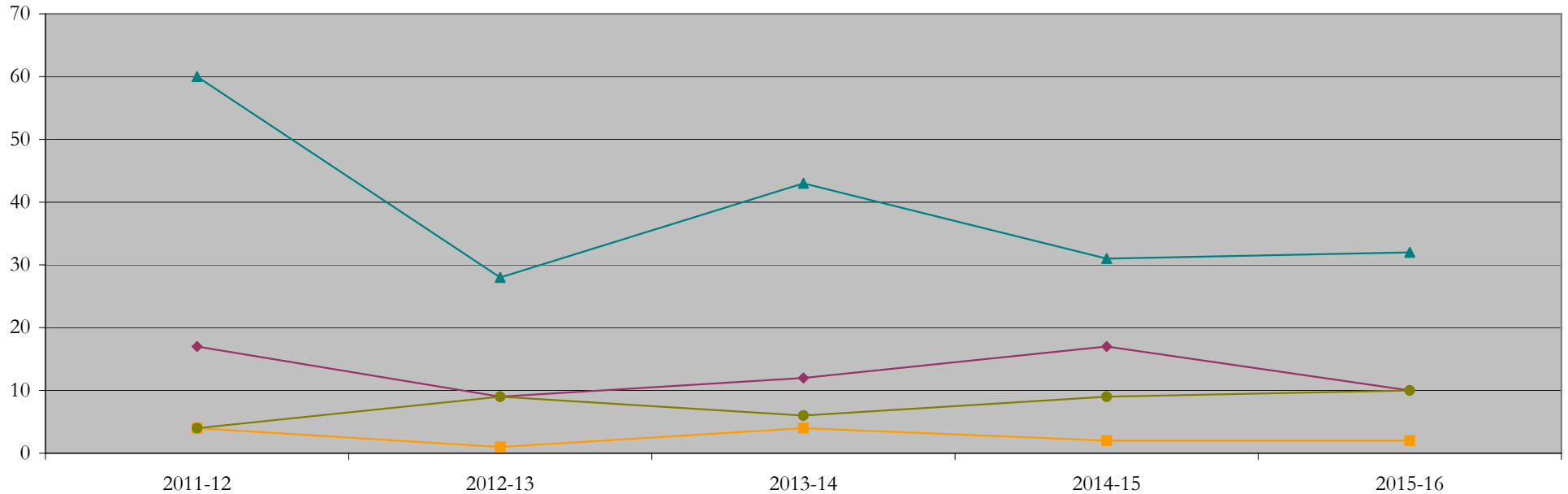
Fall Semester Year	Enrollment			Average Age			State Residency of Total Enrollment					
	Total	Primary	Secondary	Fall New Enrollment	Fall Continuing Enrollment	Academic Year Graduating Class	Residents			Non-Residents		
							Total Enrollment	New Enrollment	Continuing Enrollment	Total Enrollment	New Enrollment	Continuing Enrollment
2014	153	152	1	26	29	26	112	31	81	41	19	22
2015	162	161	1	28	29	27	119	42	77	43	21	22
2016	149	148	1	27	29	29	117	39	78	32	11	21
2017	140	139	1	28	30	27	117	49	68	23	12	11
2018	126	125	1	27	30	28	109	35	74	17	8	9



Degrees Conferred by Race/Ethnicity

Urban_Planning_and_Policy_MUPP [20FS1786MUPP]
AY2011-12 through 2015-16

Academic Year	Total	Under Represented Minorities (URM)								Asian		Native Hawaiian or Pacific		White		Two or More Races		International		Not Reported
		American Indian or Alaska Native		Black or African American		Hispanic / Latino		URM Total		Count	%	Count	%	Count	%	Count	%	Count	%	
		Count	%	Count	%	Count	%	Count	%											
2013 - 2014	90	0	0.0	6	6.7	11	12.2	17	18.9	4	4.4	0	0.0	60	66.7	4	4.4	4	4.4	1
2014 - 2015	50	0	0.0	1	2.0	8	16.0	9	18.0	1	2.0	0	0.0	28	56.0	2	4.0	9	18.0	1
2015 - 2016	74	0	0.0	6	8.1	6	8.1	12	16.2	4	5.4	0	0.0	43	58.1	5	6.8	6	8.1	4
2016 - 2017	60	0	0.0	11	18.3	6	10.0	17	28.3	2	3.3	0	0.0	31	51.7	1	1.7	9	15.0	0
2017 - 2018	54	0	0.0	4	7.4	6	11.1	10	18.5	2	3.7	0	0.0	32	59.3	0	0.0	10	18.5	0



Notes: 1) URM stands for Under-Represented Minority and includes American Indian or Alaska Native; Black or African-American; Hispanic / Latino race/ethnicity groups
2) Individual URM groups, Native Hawaiian Pacific Islander, Two or More Races, and Other race/ethnicity categories left off this chart due to relatively low numbers

Degrees Conferred

by Gender

Urban_Planning_and_Policy_MUPP [20FS1786MUPP]

AY2011-12 through 2015-16

Academic Year	Total	Male		Female		Not Reported
		Count	%	Count	%	
2013 - 2014	90	47	52.2	43	47.8	0
2014 - 2015	50	23	46.0	27	54.0	0
2015 - 2016	74	41	55.4	33	44.6	0
2016 - 2017	60	29	48.3	31	51.7	0
2017 - 2018	53	29	54.7	24	45.3	0

