

Matriculation

Diversity Pipeline

Public_Administration_MPA [20FS0339MPA]

Fall 2014 - Fall 2018

Fall Semester Year	Applied					Admitted					Non-URM Admitted to Applied Yield %	URM Admitted to Applied Yield %	New Enrollment					Non-URM Enrolled to Admitted Yield %	URM Enrolled to Admitted Yield %	Total Enrollment				
	Grand Total	Non-URM Total		URM Total		Grand Total	Non-URM Total		URM Total				Grand Total	Non-URM Total		URM Total				Grand Total	Non-URM Total		URM Total	
		Count	%	Count	%		Count	%	Count	%				Count	%	Count	%				Count	%	Count	%
	Count	%	Count	%	Count	%	Count	%	Count	%			Count	%	Count	%	Count			%	Count	%		
2014	123	93	75.6%	30	24.4%	91	69	75.8%	22	24.2%	74.2%	73.3%	33	20	60.6%	13	39.4%	29.0%	59.1%	108	75	69.4%	33	30.6%
2015	112	82	73.2%	30	26.8%	86	64	74.4%	22	25.6%	78.0%	73.3%	35	21	60.0%	14	40.0%	32.8%	63.6%	98	65	66.3%	33	33.7%
2016	92	70	76.1%	22	23.9%	64	51	79.7%	13	20.3%	72.9%	59.1%	32	21	65.6%	11	34.4%	41.2%	84.6%	100	65	65.0%	35	35.0%
2017	85	50	58.8%	35	41.2%	58	34	58.6%	24	41.4%	68.0%	68.6%	30	19	63.3%	11	36.7%	55.9%	45.8%	93	56	60.2%	37	39.8%
2018	69	51	73.9%	18	26.1%	60	45	75.0%	15	25.0%	88.2%	83.3%	29	18	62.1%	11	37.9%	40.0%	73.3%	101	68	67.3%	33	32.7%
Average	96	69	71.9%	27	28.1%	72	53	73.3%	19	26.7%	76.0%	71.1%	32	20	62.3%	12	37.7%	37.6%	62.5%	100	66	65.8%	34.2	34.2%

Note: URM stands for Under-Represented Minority and includes American Indian or Alaska Native; Black or African-American; Hispanic / Latino race/ethnicity groups

Applications, Admission, & New Enrollment Yields

by Race/Ethnicity & Gender

Public_Administration_MPA [20FS0339MPA]

Fall 2014 - Fall 2018

	Fall Semester Year	Total		Under Represented Minorities (URM)										Race/Eth Not Reported		Male		Female									
				American Indian or Alaska Native		Black or African American		Hispanic / Latino		URM Total		Asian								Native Hawaiian or Pacific Islander		White		Two or More Races		International	
		Count	% Yield	Count	% Yield	Count	% Yield	Count	% Yield	Count	% Yield	Count	% Yield	Count	% Yield	Count	% Yield	Count	% Yield	Count	% Yield	Count	% Yield	Count	% Yield	Count	% Yield
Applied	2014	123		0		14		16		30		10		0		44		3		32		4		46		76	
	2015	112		0		20		10		30		4		0		34		2		40		2		51		61	
	2016	92		0		13		9		22		4		0		31		6		25		4		39		53	
	2017	85		0		26		9		35		6		0		27		3		14		0		32		51	
	2018	69		0		9		9		18		1		0		25		0		11		14		31		38	
Admitted	2014	91	74.0	0	0.0	9	64.3	13	81.3	22	73.3	8	80.0	0	0.0	34	77.3	2	66.7	22	68.8	3	32	69.6	59	77.6	
	2015	86	76.8	0	0.0	14	70.0	8	80.0	22	73.3	2	50.0	0	0.0	31	91.2	0	0.0	29	72.5	2	38	74.5	48	78.7	
	2016	64	69.6	0	0.0	8	61.5	5	55.6	13	59.1	2	50.0	0	0.0	22	71.0	4	66.7	19	76.0	4	24	61.5	40	75.5	
	2017	58	68.2	0	0.0	18	69.2	6	66.7	24	68.6	6	100.0	0	0.0	23	85.2	1	33.3	4	28.6	0	17	53.1	39	76.5	
	2018	60	87.0	0	0.0	7	77.8	8	88.9	15	83.3	1	100.0	0	0.0	25	100.0	0	0.0	8	72.7	11	25	80.6	35	92.1	
Enrolled	2014	33	36.3	0	0.0	5	55.6	8	61.5	13	59.1	2	25.0	0	0.0	14	41.2	1	50.0	2	9.1	1	13	40.6	20	33.9	
	2015	35	40.7	0	0.0	9	64.3	5	62.5	14	63.6	2	100.0	0	0.0	16	51.6	0	0.0	3	10.3	0	17	44.7	18	37.5	
	2016	32	50.0	0	0.0	6	75.0	5	100.0	11	84.6	1	50.0	0	0.0	14	63.6	0	0.0	4	21.1	2	12	50.0	20	50.0	
	2017	30	51.7	0	0.0	9	50.0	2	33.3	11	45.8	4	66.7	0	0.0	15	65.2	0	0.0	0	0.0	0	10	58.8	20	51.3	
	2018	29	48.3	0	0.0	7	100.0	4	50.0	11	73.3	1	100.0	0	0.0	17	68.0	0	0.0	0	0.0	0	15	60.0	14	40.0	

Notes:

- 1) URM stands for Under-Represented Minority and includes American Indian or Alaska Native; Black or African-American; Hispanic / Latino race/ethnicity groups
- 2) Unreported Gender identification is not shown; Male and Female total may not match Total
- 3) In rare situations, the "% Yield" columns may be greater than 100. There are three potential reasons for this:
 - a) Students that received Graduate College approved transfers may not have an admission record for the program that they enrolled into.
 - b) Students with a secondary curriculum enrollment may not have an admission record for that secondary program.
 - c) Students who were newly enrolled in the summer term prior to the fall were added to the fall new enrollment totals.

Applications, Admission, & New Enrollment Yields, cont. by Race/Ethnicity & Gender

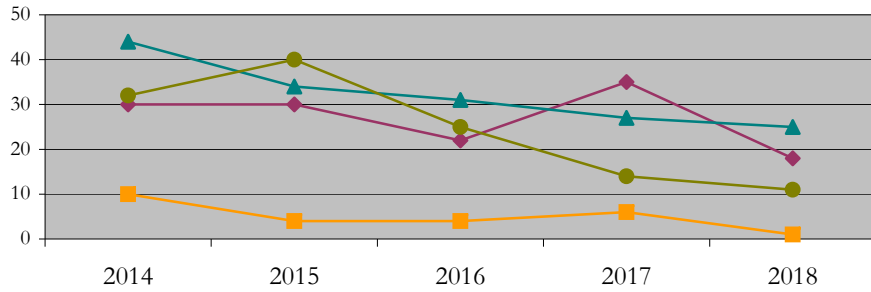
Public_Administration_MPA [20FS0339MPA]

Fall 2014 - Fall 2018

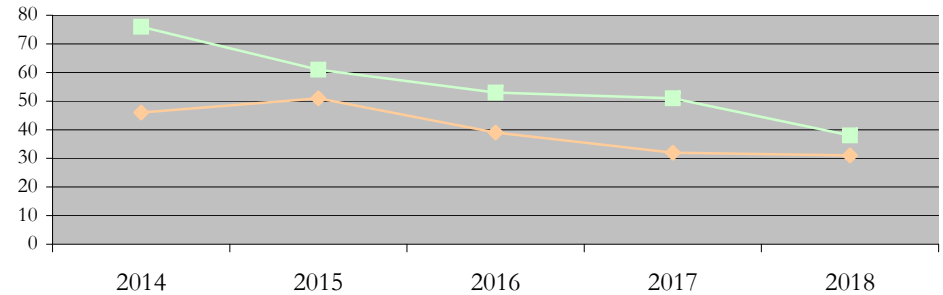
URM Total Asian White International

Male Female

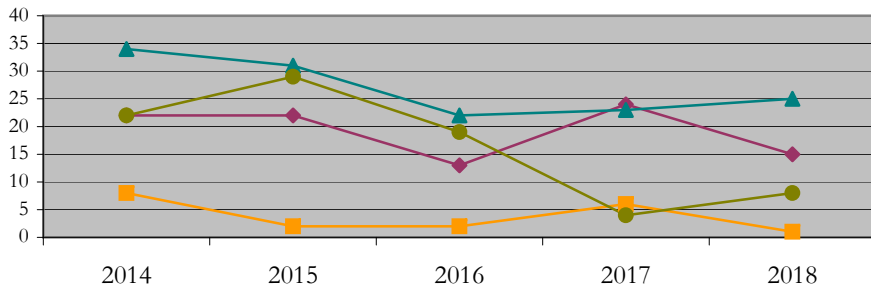
Applications by Race/Ethnicity



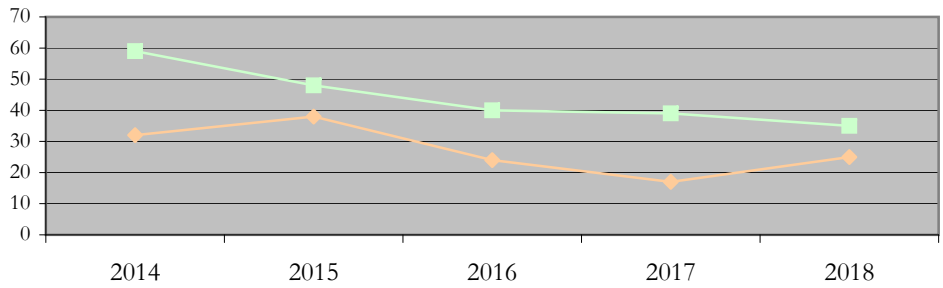
Applications by Gender



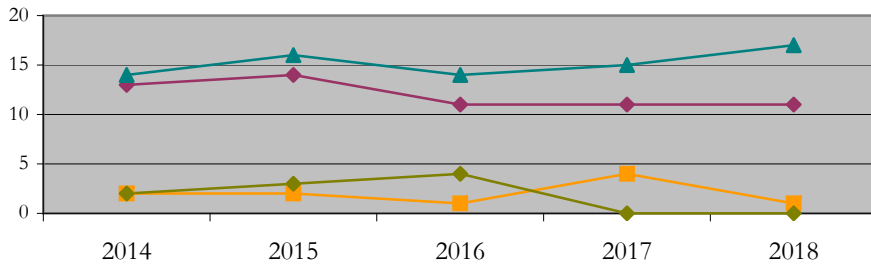
Admissions by Race/Ethnicity



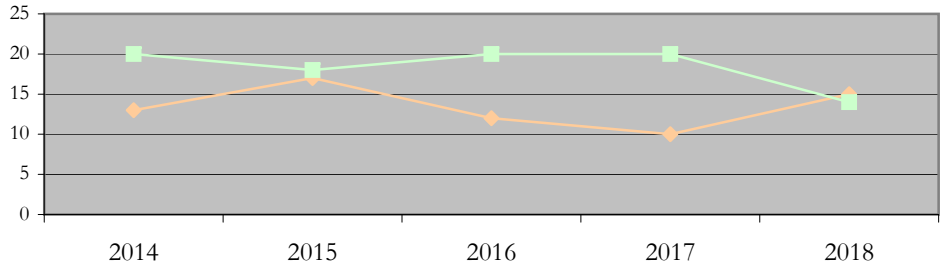
Admissions by Gender



New Enrollments by Race/Ethnicity



New Enrollments by Gender



Notes: 1) URM stands for Under-Represented Minority and includes American Indian or Alaska Native; Black or African-American; Hispanic / Latino race/ethnicity groups
2) Individual URM groups, Native Hawaiian Pacific Islander, Two or More Races, and Other race/ethnicity categories left off these charts due to relatively low numbers

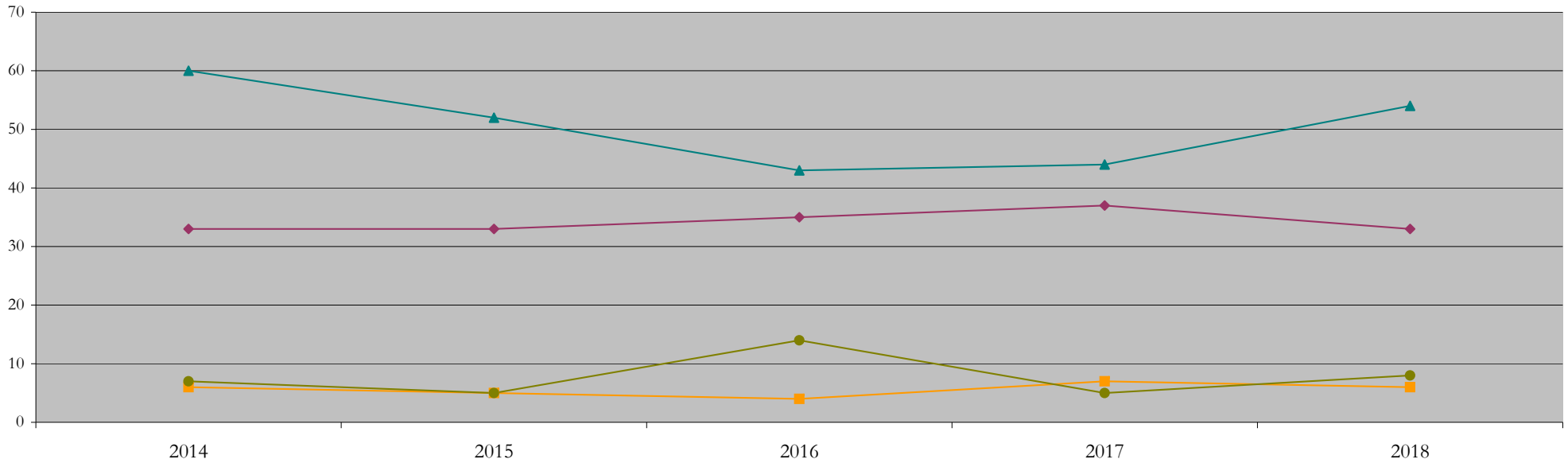
Total Enrollment (includes secondary curriculum)

by Race/Ethnicity

Public_Administration_MPA [20FS0339MPA]

Fall 2014 - Fall 2018

Fall Semester Year	Total	Under Represented Minorities (URM)										Native Hawaiian or Pacific Islander	White		Two or More Races		International		Race/Eth Not Reported		
		American Indian or Alaska Native		Black or African American		Hispanic / Latino		URM Total		Asian			Count	%	Count	%	Count	%		Count	%
		Count	%	Count	%	Count	%	Count	%	Count	%										
2014	108	0	0.0	16	14.8	17	15.7	33	30.6	6	5.6	0	0.0	60	55.6	1	0.9	7	6.5	1	
2015	98	0	0.0	18	18.4	15	15.3	33	33.7	5	5.1	0	0.0	52	53.1	1	1.0	5	5.1	2	
2016	100	0	0.0	16	16.0	19	19.0	35	35.0	4	4.0	0	0.0	43	43.0	1	1.0	14	14.0	3	
2017	93	0	0.0	21	22.6	16	17.2	37	39.8	7	7.5	0	0.0	44	47.3	0	0.0	5	5.4	0	
2018	101	0	0.0	19	18.8	14	13.9	33	32.7	6	5.9	0	0.0	54	53.5	0	0.0	8	7.9	0	



Notes: 1) URM stands for Under-Represented Minority and includes American Indian or Alaska Native; Black or African-American; Hispanic / Latino race/ethnicity groups
 2) Individual URM groups, Native Hawaiian Pacific Islander, Two or More Races, and Other race/ethnicity categories left off this chart due to relatively low numbers

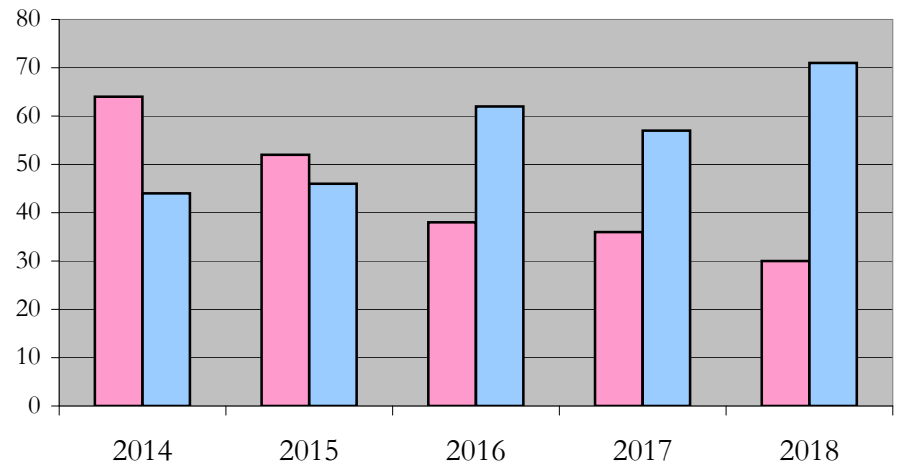
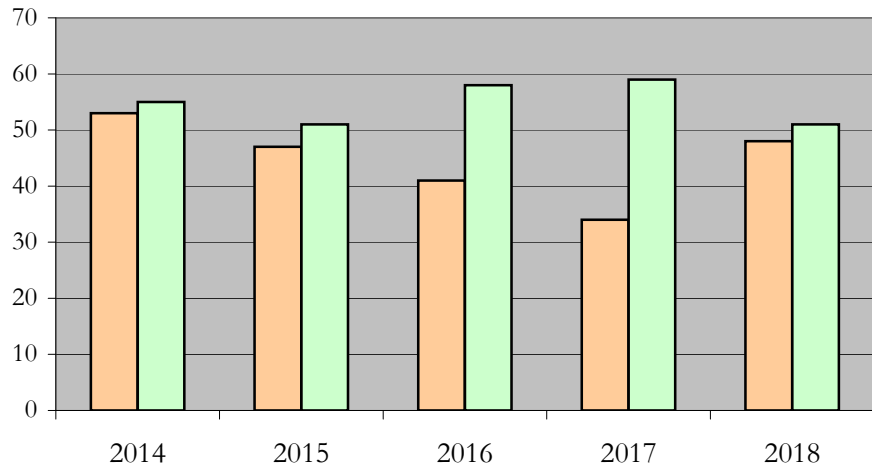
Total Enrollment (includes secondary curriculum)

by Student Type, Gender, and Enrollment Time

Public_Administration_MPA [20FS0339MPA]

Fall 2014 - Fall 2018

Fall Semester Year	Total	New		Continuing		Male		Female		Gender Not Reported	Part-time		Full-time	
		Count	%	Count	%	Count	%	Count	%	Count	Count	%	Count	%
2014	108	33	30.6	75	69.4	53	49.1	55	50.9	0	64	59.3	44	40.7
2015	98	35	35.7	63	64.3	47	48.0	51	52.0	0	52	53.1	46	46.9
2016	100	32	32.0	68	68.0	41	41.0	58	58.0	1	38	38.0	62	62.0
2017	93	30	32.3	63	67.7	34	36.6	59	63.4	0	36	38.7	57	61.3
2018	101	29	28.7	72	71.3	48	47.5	51	50.5	2	30	29.7	71	70.3



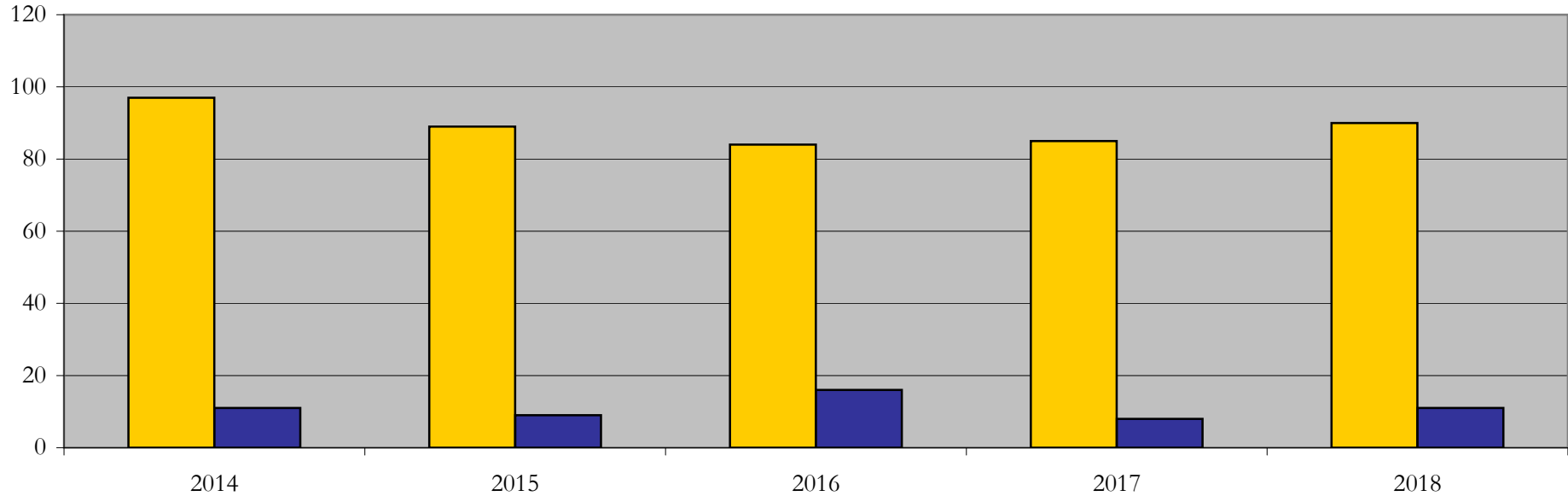
Enrollment & Degrees Conferred

by Primary/Secondary, Average Age, State Residency

Public_Administration_MPA [20FS0339MPA]

Fall 2014 - Fall 2018

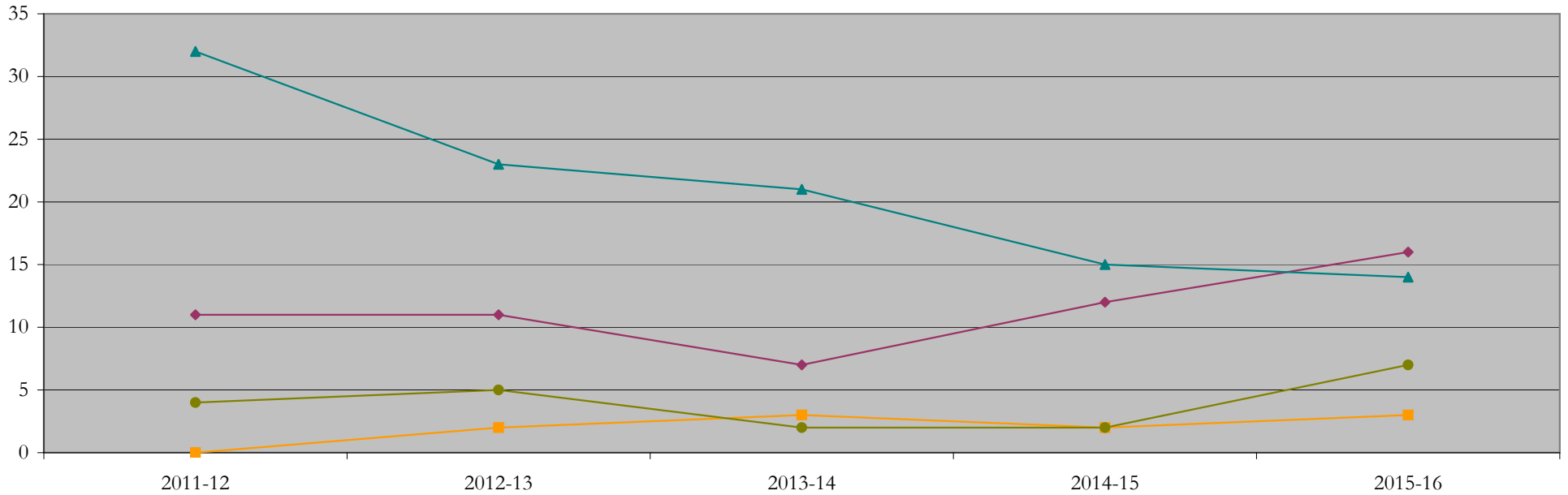
Fall Semester Year	Enrollment			Average Age			State Residency of Total Enrollment					
	Total	Primary	Secondary	Fall New Enrollment	Fall Continuing Enrollment	Academic Year Graduating Class	Residents			Non-Residents		
							Total Enrollment	New Enrollment	Continuing Enrollment	Total Enrollment	New Enrollment	Continuing Enrollment
2014	108	108	0	30	30	27	97	30	67	11	3	8
2015	98	98	0	27	33	26	89	29	60	9	6	3
2016	100	100	0	25	31	29	84	27	57	16	5	11
2017	93	93	0	28	30	28	85	28	57	8	2	6
2018	101	101	0	27	30	26	90	28	62	11	1	10



Degrees Conferred by Race/Ethnicity

Public_Administration_MPA [20FS0339MPA]
AY2011-12 through 2015-16

Academic Year	Total	Under Represented Minorities (URM)								Asian		Native Hawaiian or Pacific		White		Two or More Races		International		Not Reported
		American Indian or Alaska Native		Black or African American		Hispanic / Latino		URM Total		Count	%	Count	%	Count	%	Count	%	Count	%	Count
		Count	%	Count	%	Count	%	Count	%											
2013 - 2014	50	0	0.0	4	8.0	7	14.0	11	22.0	0	0.0	0	0.0	32	64.0	1	2.0	4	8.0	2
2014 - 2015	41	0	0.0	6	14.6	5	12.2	11	26.8	2	4.9	0	0.0	23	56.1	0	0.0	5	12.2	0
2015 - 2016	33	0	0.0	3	9.1	4	12.1	7	21.2	3	9.1	0	0.0	21	63.6	0	0.0	2	6.1	0
2016 - 2017	34	0	0.0	3	8.8	9	26.5	12	35.3	2	5.9	0	0.0	15	44.1	2	5.9	2	5.9	1
2017 - 2018	40	0	0.0	10	25.0	6	15.0	16	40.0	3	7.5	0	0.0	14	35.0	0	0.0	7	17.5	0



Notes: 1) URM stands for Under-Represented Minority and includes American Indian or Alaska Native; Black or African-American; Hispanic / Latino race/ethnicity groups
2) Individual URM groups, Native Hawaiian Pacific Islander, Two or More Races, and Other race/ethnicity categories left off this chart due to relatively low numbers

Degrees Conferred

by Gender

Public_Administration_MPA [20FS0339MPA]

AY2011-12 through 2015-16

Academic Year	Total	Male		Female		Not Reported
		Count	%	Count	%	
2013 - 2014	50	24	48.0	26	52.0	0
2014 - 2015	41	21	51.2	20	48.8	0
2015 - 2016	33	19	57.6	14	42.4	0
2016 - 2017	34	16	47.1	18	52.9	0
2017 - 2018	38	13	34.2	25	65.8	0

