

Matriculation

Diversity Pipeline

Public_Administration_PHD [20FS0339PHD]

Fall 2014 - Fall 2018

Fall Semester Year	Applied					Admitted					Non-URM Admitted to Applied Yield %	URM Admitted to Applied Yield %	New Enrollment					Non-URM Enrolled to Admitted Yield %	URM Enrolled to Admitted Yield %	Total Enrollment				
	Grand Total	Non-URM Total		URM Total		Grand Total	Non-URM Total		URM Total				Grand Total	Non-URM Total		URM Total				Grand Total	Non-URM Total		URM Total	
		Count	%	Count	%		Count	%	Count	%				Count	%	Count	%				Count	%	Count	%
2014	33	30	90.9%	3	9.1%	11	11	100.0%	0	0.0%	36.7%	0.0%	2	2	100.0%	0	0.0%	18.2%	0.0%	20	19	95.0%	1	5.0%
2015	12	11	91.7%	1	8.3%	3	3	100.0%	0	0.0%	27.3%	0.0%	0	0	0.0%	0	0.0%	0.0%	0.0%	14	14	100.0%	0	0.0%
2016	30	21	70.0%	9	30.0%	10	8	80.0%	2	20.0%	38.1%	22.2%	5	4	80.0%	1	20.0%	50.0%	50.0%	17	16	94.1%	1	5.9%
2017	20	19	95.0%	1	5.0%	9	9	100.0%	0	0.0%	47.4%	0.0%	3	3	100.0%	0	0.0%	33.3%	0.0%	22	20	90.9%	2	9.1%
2018	29	29	100.0%	0	0.0%	12	12	100.0%	0	0.0%	41.4%	0.0%	9	9	100.0%	0	0.0%	75.0%	0.0%	28	26	92.9%	2	7.1%
Average	25	22	88.7%	3	11.3%	9	9	95.6%	0	4.4%	39.1%	14.3%	4	4	94.7%	0	5.3%	41.9%	50.0%	20	19	94.1%	1.2	5.9%

Note: URM stands for Under-Represented Minority and includes American Indian or Alaska Native; Black or African-American; Hispanic / Latino race/ethnicity groups

Applications, Admission, & New Enrollment Yields

by Race/Ethnicity & Gender

Public_Administration_PHD [20FS0339PHD]

Fall 2014 - Fall 2018

	Fall Semester Year	Total	Under Represented Minorities (URM)										Race/Eth Not Reported	Male	Female												
			American Indian or Alaska Native		Black or African American		Hispanic / Latino		URM Total		Asian					Native Hawaiian or Pacific Islander		White		Two or More Races		International					
			Count	% Yield	Count	% Yield	Count	% Yield	Count	% Yield	Count	% Yield	Count	% Yield	Count	% Yield	Count	% Yield	Count	% Yield	Count	% Yield	Count	% Yield	Count	% Yield	
Applied	2014	33	0		3		0		3		0		0		4		1		25		0		22		11		
	2015	12	0		1		0		1		0		0		1		0		9		1		7		5		
	2016	30	1		6		2		9		2		0		3		0		16		0		24		6		
	2017	20	0		1		0		1		1		0		3		1		13		1		12		8		
	2018	29	0		0		0		0		2		0		1		0		21		5		18		11		
Admitted	2014	11	33.3	0	0.0	0	0.0	0	0.0	0	0.0	0	0.0	0	0.0	3	75.0	0	0.0	8	32.0	0		10	45.5	1	9.1
	2015	3	25.0	0	0.0	0	0.0	0	0.0	0	0.0	0	0.0	0	0.0	1	100.0	0	0.0	2	22.2	0		3	42.9	0	0.0
	2016	10	33.3	0	0.0	1	16.7	1	50.0	2	22.2	0	0.0	0	0.0	2	66.7	0	0.0	6	37.5	0		8	33.3	2	33.3
	2017	9	45.0	0	0.0	0	0.0	0	0.0	0	0.0	1	100.0	0	0.0	1	33.3	0	0.0	6	46.2	1		4	33.3	5	62.5
	2018	12	41.4	0	0.0	0	0.0	0	0.0	0	0.0	1	50.0	0	0.0	1	100.0	0	0.0	8	38.1	2		6	33.3	6	54.5
Enrolled	2014	2	18.2	0	0.0	0	0.0	0	0.0	0	0.0	0	0.0	0	0.0	0	0.0	0	0.0	2	25.0	0		1	10.0	1	100.0
	2015	0	0.0	0	0.0	0	0.0	0	0.0	0	0.0	0	0.0	0	0.0	0	0.0	0	0.0	0	0.0	0		0	0.0	0	0.0
	2016	5	50.0	0	0.0	0	0.0	1	100.0	1	50.0	0	0.0	0	0.0	2	100.0	0	0.0	2	33.3	0		4	50.0	1	50.0
	2017	3	33.3	0	0.0	0	0.0	0	0.0	0	0.0	0	0.0	0	0.0	0	0.0	0	0.0	1	16.7	1		1	25.0	2	40.0
	2018	9	75.0	0	0.0	0	0.0	0	0.0	0	0.0	1	100.0	0	0.0	1	100.0	0	0.0	7	87.5	0		4	66.7	5	83.3

Notes:

- 1) URM stands for Under-Represented Minority and includes American Indian or Alaska Native; Black or African-American; Hispanic / Latino race/ethnicity groups
- 2) Unreported Gender identification is not shown; Male and Female total may not match Total
- 3) In rare situations, the "% Yield" columns may be greater than 100. There are three potential reasons for this:
 - a) Students that received Graduate College approved transfers may not have an admission record for the program that they enrolled into.
 - b) Students with a secondary curriculum enrollment may not have an admission record for that secondary program.
 - c) Students who were newly enrolled in the summer term prior to the fall were added to the fall new enrollment totals.

Applications, Admission, & New Enrollment Yields, cont. by Race/Ethnicity & Gender

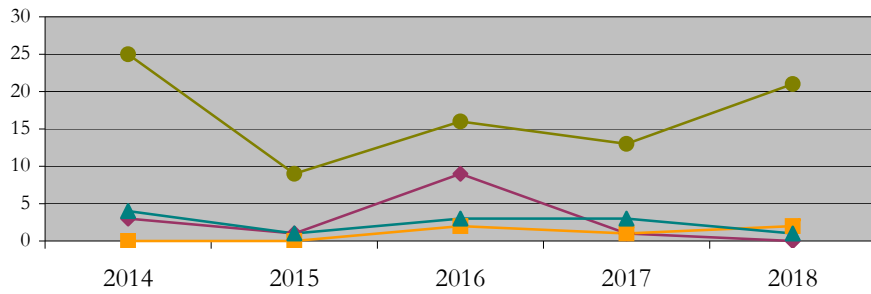
Public_Administration_PHD [20FS0339PHD]

Fall 2014 - Fall 2018

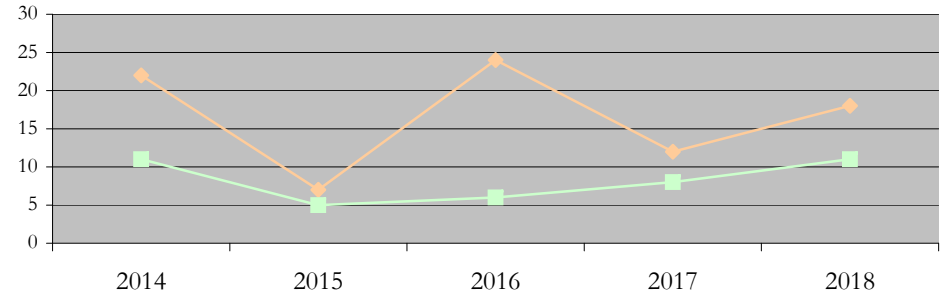
URM Total Asian White International

Male Female

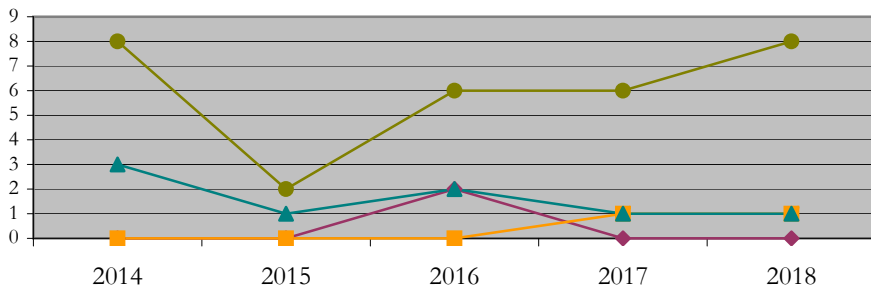
Applications by Race/Ethnicity



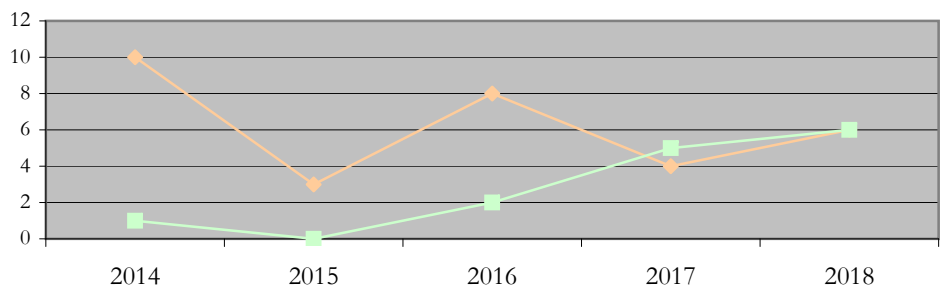
Applications by Gender



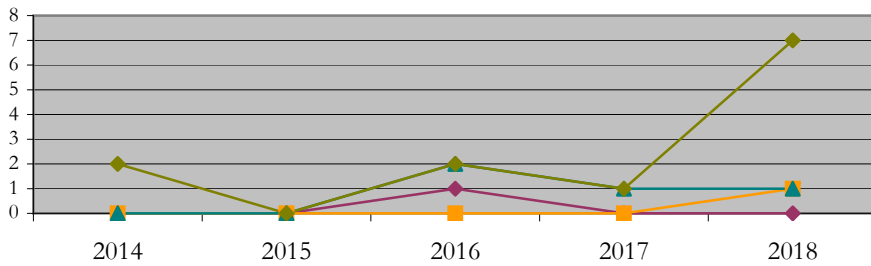
Admissions by Race/Ethnicity



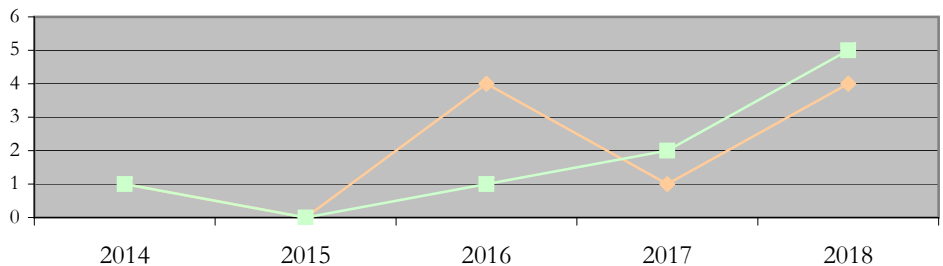
Admissions by Gender



New Enrollments by Race/Ethnicity



New Enrollments by Gender



Notes: 1) URM stands for Under-Represented Minority and includes American Indian or Alaska Native; Black or African-American; Hispanic / Latino race/ethnicity groups
2) Individual URM groups, Native Hawaiian Pacific Islander, Two or More Races, and Other race/ethnicity categories left off these charts due to relatively low numbers

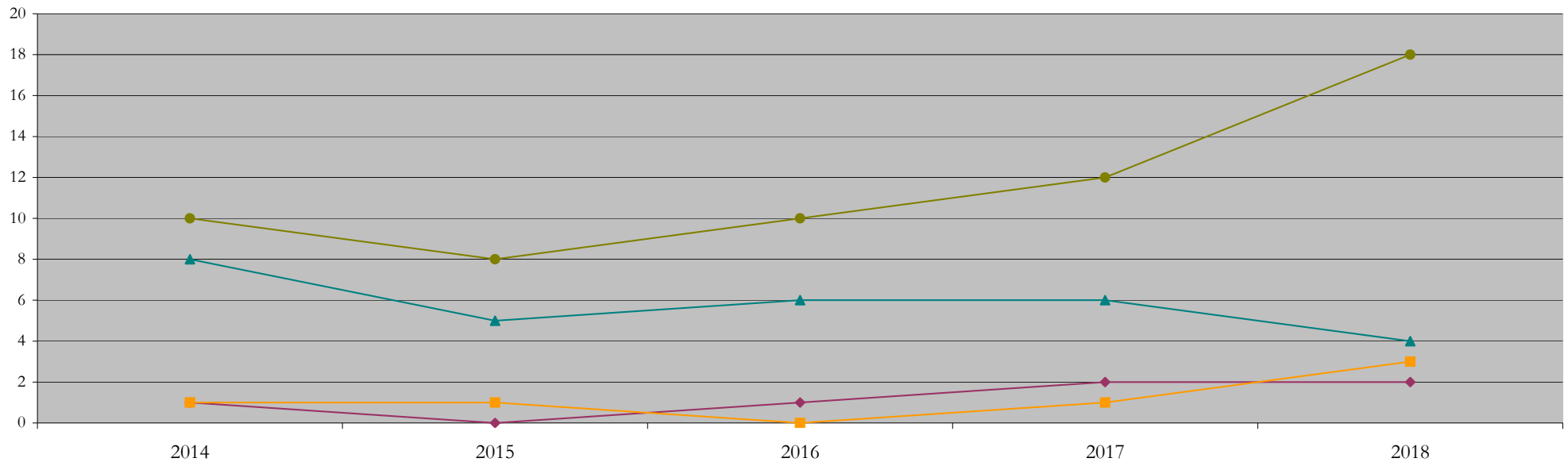
Total Enrollment (includes secondary curriculum)

by Race/Ethnicity

Public_Administration_PHD [20FS0339PHD]

Fall 2014 - Fall 2018

Fall Semester Year	Total	Under Represented Minorities (URM)										Native Hawaiian or Pacific Islander	White		Two or More Races		International		Race/Eth Not Reported		
		American Indian or Alaska Native		Black or African American		Hispanic / Latino		URM Total		Asian			Count	%	Count	%	Count	%		Count	%
		Count	%	Count	%	Count	%	Count	%	Count	%										
2014	20	0	0.0	1	5.0	0	0.0	1	5.0	1	5.0	0	0.0	8	40.0	0	0.0	10	50.0	0	
2015	14	0	0.0	0	0.0	0	0.0	0	0.0	1	7.1	0	0.0	5	35.7	0	0.0	8	57.1	0	
2016	17	0	0.0	0	0.0	1	5.9	1	5.9	0	0.0	0	0.0	6	35.3	0	0.0	10	58.8	0	
2017	22	0	0.0	1	4.5	1	4.5	2	9.1	1	4.5	0	0.0	6	27.3	0	0.0	12	54.5	1	
2018	28	0	0.0	1	3.6	1	3.6	2	7.1	3	10.7	0	0.0	4	14.3	0	0.0	18	64.3	1	



Notes: 1) URM stands for Under-Represented Minority and includes American Indian or Alaska Native; Black or African-American; Hispanic / Latino race/ethnicity groups
 2) Individual URM groups, Native Hawaiian Pacific Islander, Two or More Races, and Other race/ethnicity categories left off this chart due to relatively low numbers

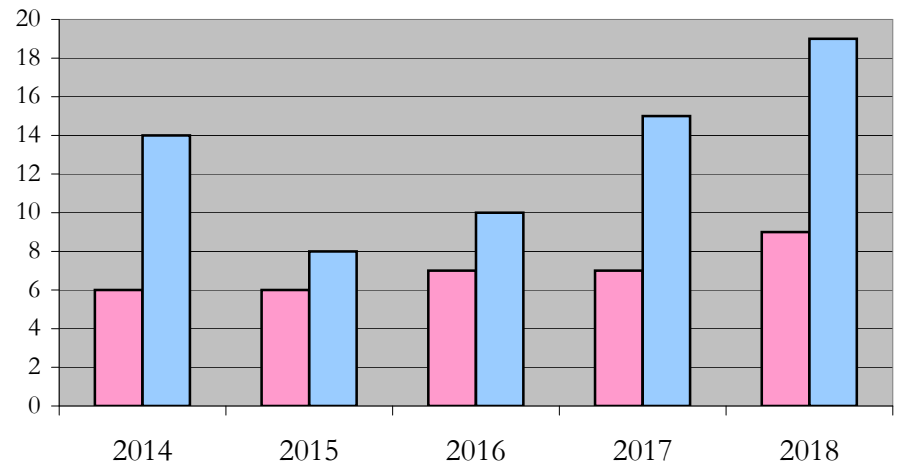
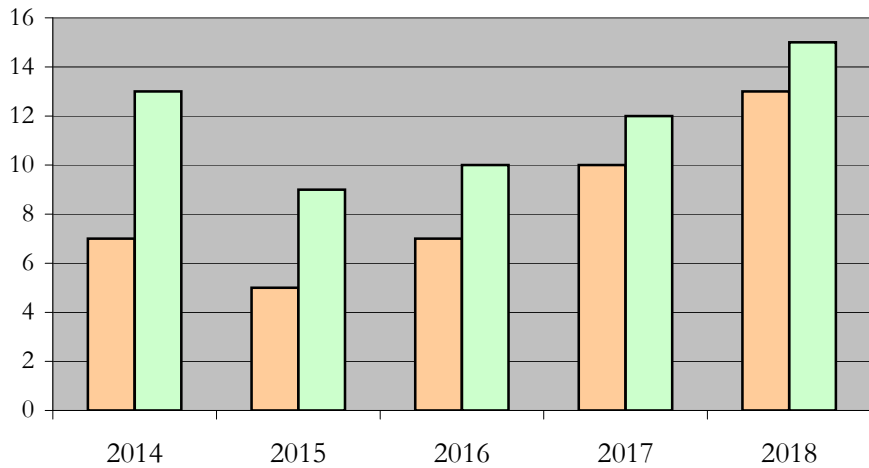
Total Enrollment (includes secondary curriculum)

by Student Type, Gender, and Enrollment Time

Public_Administration_PHD [20FS0339PHD]

Fall 2014 - Fall 2018

Fall Semester Year	Total	New		Continuing		Male		Female		Gender Not Reported	Part-time		Full-time	
		Count	%	Count	%	Count	%	Count	%		Count	%	Count	%
2014	20	2	10.0	18	90.0	7	35.0	13	65.0	0	6	30.0	14	70.0
2015	14	0	0.0	14	100.0	5	35.7	9	64.3	0	6	42.9	8	57.1
2016	17	5	29.4	12	70.6	7	41.2	10	58.8	0	7	41.2	10	58.8
2017	22	3	13.6	19	86.4	10	45.5	12	54.5	0	7	31.8	15	68.2
2018	28	9	32.1	19	67.9	13	46.4	15	53.6	0	9	32.1	19	67.9



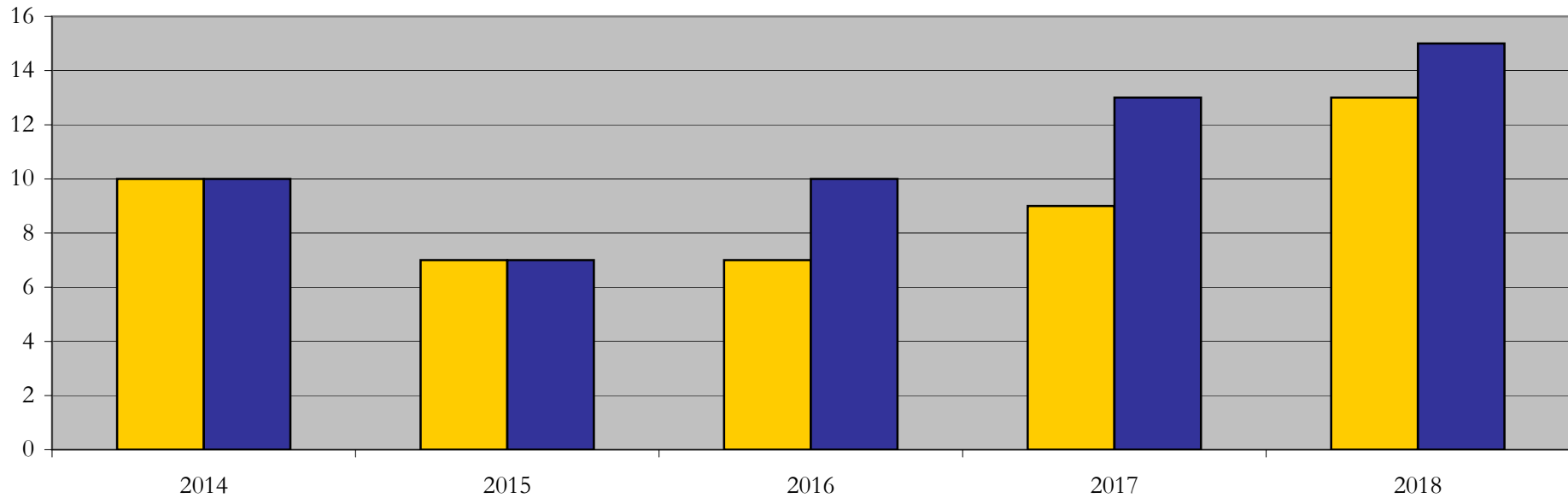
Enrollment & Degrees Conferred

by Primary/Secondary, Average Age, State Residency

Public_Administration_PHD [20FS0339PHD]

Fall 2014 - Fall 2018

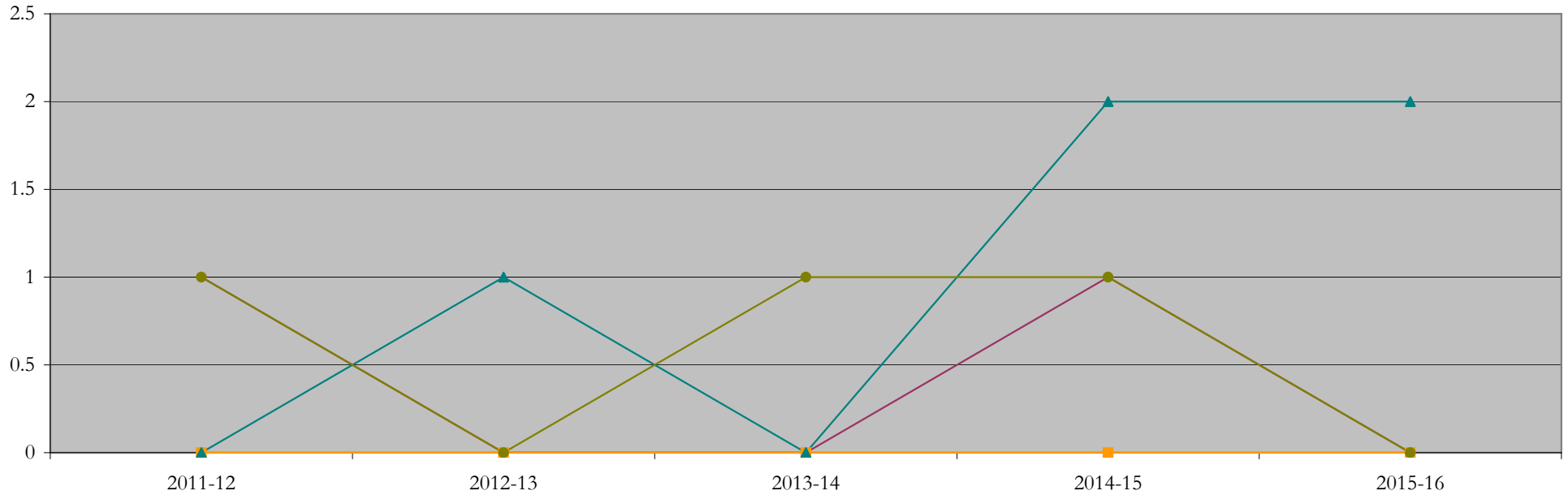
Fall Semester Year	Enrollment			Average Age			State Residency of Total Enrollment					
	Total	Primary	Secondary	Fall New Enrollment	Fall Continuing Enrollment	Academic Year Graduating Class	Residents			Non-Residents		
							Total Enrollment	New Enrollment	Continuing Enrollment	Total Enrollment	New Enrollment	Continuing Enrollment
2014	20	20	0	31	34	33	10	0	10	10	2	8
2015	14	14	0	0	35	31	7	0	7	7	0	7
2016	17	17	0	30	34	30	7	2	5	10	3	7
2017	22	22	0	31	35	35	9	1	8	13	2	11
2018	28	28	0	33	34	32	13	5	8	15	4	11



Degrees Conferred by Race/Ethnicity

Public_Administration_PHD [20FS0339PHD]
AY2011-12 through 2015-16

Academic Year	Total	Under Represented Minorities (URM)								Asian	Native Hawaiian or Pacific	White	Two or More Races	International	Not Reported					
		American Indian or Alaska Native		Black or African American		Hispanic / Latino		URM Total												
		Count	%	Count	%	Count	%	Count	%											
2013 - 2014	2	0	0.0	1	50.0	0	0.0	1	50.0	0	0.0	0	0.0	0	0.0	1	50.0	0		
2014 - 2015	1	0	0.0	0	0.0	0	0.0	0	0.0	0	0.0	0	0.0	1	100.0	0	0.0	0	0	
2015 - 2016	1	0	0.0	0	0.0	0	0.0	0	0.0	0	0.0	0	0.0	0	0.0	1	100.0	0	0	
2016 - 2017	4	0	0.0	1	25.0	0	0.0	1	25.0	0	0.0	0	0.0	2	50.0	0	0.0	1	25.0	0
2017 - 2018	2	0	0.0	0	0.0	0	0.0	0	0.0	0	0.0	0	0.0	2	100.0	0	0.0	0	0	



Notes: 1) URM stands for Under-Represented Minority and includes American Indian or Alaska Native; Black or African-American; Hispanic / Latino race/ethnicity groups
2) Individual URM groups, Native Hawaiian Pacific Islander, Two or More Races, and Other race/ethnicity categories left off this chart due to relatively low numbers

Degrees Conferred

by Gender

Public_Administration_PHD [20FS0339PHD]

AY2011-12 through 2015-16

Academic Year	Total	Male		Female		Not Reported
		Count	%	Count	%	
2013 - 2014	2	0	0.0	2	100.0	0
2014 - 2015	1	0	0.0	1	100.0	0
2015 - 2016	1	0	0.0	1	100.0	0
2016 - 2017	4	1	25.0	3	75.0	0
2017 - 2018	2	0	0.0	2	100.0	0

