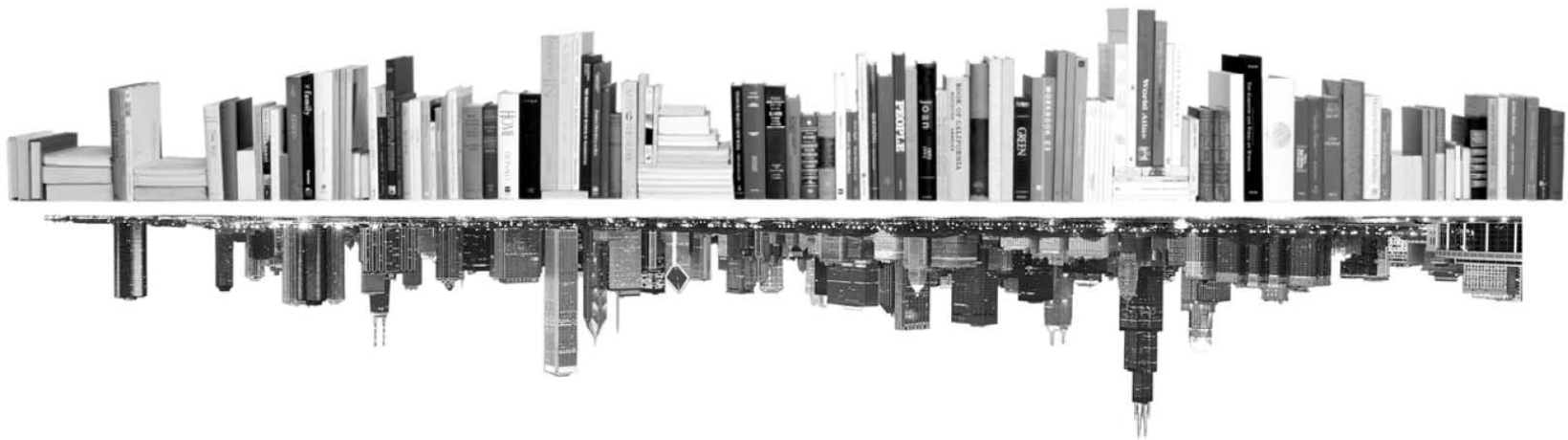


**GRADUATE
COLLEGE**



**ENROLLMENT MANAGEMENT REPORT
COLLEGE PROFILE
SOCIAL WORK
FALL 2016**





INTRODUCTION – COLLEGE PROFILE

The following college profile has been developed to tailor our annual enrollment report to your college’s data.

The college profile report tracks students, not enrollments. This means that students with dual enrollments are reported only once – under their first program.

Kevin Monahan
Director of Graduate Program Review and Information Systems
Graduate College, University of Illinois at Chicago
Voice: 312.413.0410 Email: kmonahan@uic.edu

TABLE OF CONTENTS

MATRICULATION	
Diversity Pipeline	1
APPLICATIONS	
by Race/Ethnicity	2 – 5
ENROLLMENT	
by Race/Ethnicity	6 – 9
by Type, Time, & Gender	10 – 13
DEGREES	
by Race/Ethnicity	14 – 15
by Gender	16 – 17
List of academic programs included in this report	Appendix A

Matriculation

Diversity Pipeline

College of Social Work

Fall 2012 - Fall 2016

	Fall Semester Year	Applied					Admitted					Non-URM Admitted to Applied Yield %	URM Admitted to Applied Yield %	New Enrollment					Non-URM Enrolled to Admitted Yield %	URM Enrolled to Admitted Yield %	Total Enrollment				
		Grand Total	Non-URM Total		URM Total		Grand Total	Non-URM Total		URM Total				Grand Total	Non-URM Total		URM Total				Grand Total	Non-URM Total		URM Total	
			Count	%	Count	%		Count	%	Count	%				Count	%	Count	%				Count	%	Count	%
All	2012	923	671	72.7%	252	27.3%	476	356	74.8%	120	25.2%	53.1%	47.6%	220	155	70.5%	65	29.5%	43.5%	54.2%	427	301	70.5%	126	29.5%
	2013	1025	716	69.9%	309	30.1%	565	401	71.0%	164	29.0%	56.0%	53.1%	276	174	63.0%	102	37.0%	43.4%	62.2%	483	313	64.8%	170	35.2%
	2014	880	615	69.9%	265	30.1%	476	365	76.7%	111	23.3%	59.3%	41.9%	240	176	73.3%	64	26.7%	48.2%	57.7%	496	337	67.9%	159	32.1%
	2015	943	665	70.5%	278	29.5%	427	307	71.9%	120	28.1%	46.2%	43.2%	231	154	66.7%	77	33.3%	50.2%	64.2%	475	309	65.1%	166	34.9%
	2016	814	548	67.3%	266	32.7%	486	334	68.7%	152	31.3%	60.9%	57.1%	244	160	65.6%	84	34.4%	47.9%	55.3%	460	298	64.8%	162	35.2%
	Average	917	643	70.1%	274	29.9%	486	353	72.6%	133	27.4%	54.8%	48.7%	242	164	67.6%	78	32.4%	46.5%	58.8%	468	312	66.6%	157	33.4%
Masters & IBHE Certificate	2012	876	636	72.6%	240	27.4%	465	347	74.6%	118	25.4%	54.6%	49.2%	216	153	70.8%	63	29.2%	44.1%	53.4%	397	283	71.3%	114	28.7%
	2013	982	686	69.9%	296	30.1%	553	392	70.9%	161	29.1%	57.1%	54.4%	271	171	63.1%	100	36.9%	43.6%	62.1%	453	294	64.9%	159	35.1%
	2014	854	598	70.0%	256	30.0%	470	359	76.4%	111	23.6%	60.0%	43.4%	240	176	73.3%	64	26.7%	49.0%	57.7%	466	317	68.0%	149	32.0%
	2015	912	646	70.8%	266	29.2%	415	300	72.3%	115	27.7%	46.4%	43.2%	224	149	66.5%	75	33.5%	49.7%	65.2%	445	288	64.7%	157	35.3%
	2016	789	531	67.3%	258	32.7%	480	330	68.8%	150	31.3%	62.1%	58.1%	239	156	65.3%	83	34.7%	47.3%	55.3%	437	282	64.5%	155	35.5%
	Average	883	619	70.2%	263	29.8%	477	346	72.5%	131	27.5%	55.8%	49.8%	238	161	67.6%	77	32.4%	46.6%	58.8%	440	293	66.6%	147	33.4%
Doctorate	2012	47	35	74.5%	12	25.5%	11	9	81.8%	2	18.2%	25.7%	16.7%	4	2	50.0%	2	50.0%	22.2%	100.0%	30	18	60.0%	12	40.0%
	2013	43	30	69.8%	13	30.2%	12	9	75.0%	3	25.0%	30.0%	23.1%	5	3	60.0%	2	40.0%	33.3%	66.7%	30	19	63.3%	11	36.7%
	2014	26	17	65.4%	9	34.6%	6	6	100.0%	0	0.0%	35.3%	0.0%	0	0	0.0%	0	0.0%	0.0%	0.0%	30	20	66.7%	10	33.3%
	2015	31	19	61.3%	12	38.7%	12	7	58.3%	5	41.7%	36.8%	41.7%	7	5	71.4%	2	28.6%	71.4%	40.0%	30	21	70.0%	9	30.0%
	2016	25	17	68.0%	8	32.0%	6	4	66.7%	2	33.3%	23.5%	25.0%	5	4	80.0%	1	20.0%	100.0%	50.0%	23	16	69.6%	7	30.4%
	Average	34	24	68.6%	11	31.4%	9	7	74.5%	2	25.5%	29.7%	22.2%	4	3	66.7%	1	33.3%	40.0%	58.3%	29	19	65.7%	10	34.3%
Non-Degree & Campus Certificate	2012	0	0	0.0%	0	0.0%	0	0	0.0%	0	0.0%	0.0%	0.0%	0	0	0.0%	0	0.0%	0.0%	0.0%	0	0	0.0%	0	0.0%
	2013	0	0	0.0%	0	0.0%	0	0	0.0%	0	0.0%	0.0%	0.0%	0	0	0.0%	0	0.0%	0.0%	0.0%	0	0	0.0%	0	0.0%
	2014	0	0	0.0%	0	0.0%	0	0	0.0%	0	0.0%	0.0%	0.0%	0	0	0.0%	0	0.0%	0.0%	0.0%	0	0	0.0%	0	0.0%
	2015	0	0	0.0%	0	0.0%	0	0	0.0%	0	0.0%	0.0%	0.0%	0	0	0.0%	0	0.0%	0.0%	0.0%	0	0	0.0%	0	0.0%
	2016	0	0	0.0%	0	0.0%	0	0	0.0%	0	0.0%	0.0%	0.0%	0	0	0.0%	0	0.0%	0.0%	0.0%	0	0	0.0%	0	0.0%
	Average	0	0	0.0%	0	0.0%	0	0	0.0%	0	0.0%	0.0%	0.0%	0	0	0.0%	0	0.0%	0.0%	0.0%	0	0	0.0%	0	0.0%

Note: URM stands for Under-Represented Minority and includes American Indian or Alaska Native; Black or African-American; Hispanic / Latino race/ethnicity groups

Applications - Total

by Race/Ethnicity

College of Social Work

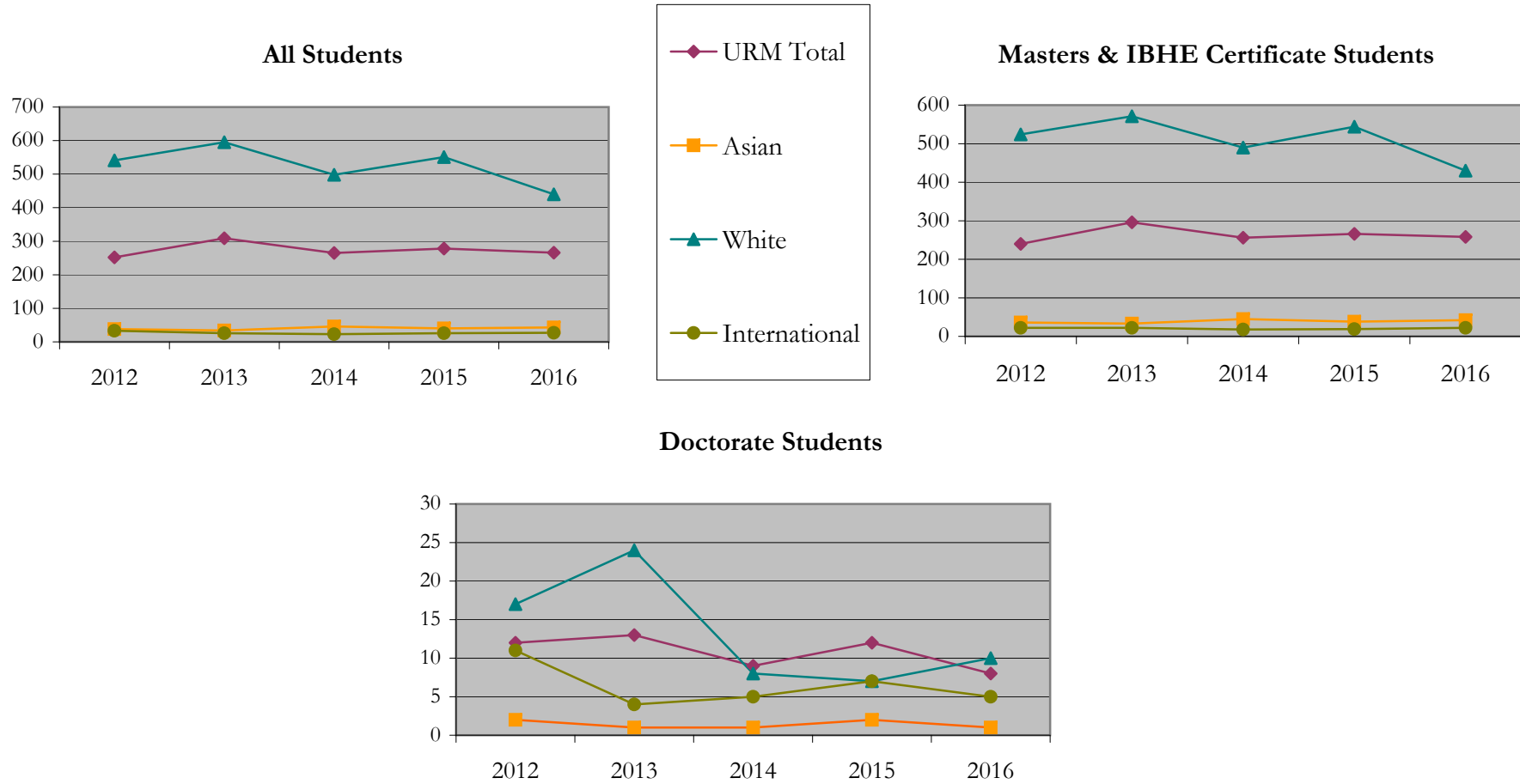
Fall 2012 - Fall 2016

		Total	Under Represented Minorities (URM)																Not Reported		
			American Indian or Alaska Native		Black or African American		Hispanic / Latino		URM Total		Asian		Native Hawaiian or Pacific Islander		White		Two or More Races			International	
			Count	%	Count	%	Count	%	Count	%	Count	%	Count	%	Count	%	Count	%		Count	%
All	2012	923	1	0.1	140	15.2	111	12.0	252	27.3	38	4.1	1	0.1	541	58.6	29	3.1	33	3.6	29
	2013	1025	0	0.0	159	15.5	150	14.6	309	30.1	34	3.3	0	0.0	595	58.0	22	2.1	26	2.5	39
	2014	880	1	0.1	133	15.1	131	14.9	265	30.1	46	5.2	0	0.0	498	56.6	17	1.9	23	2.6	31
	2015	943	2	0.2	119	12.6	157	16.6	278	29.5	40	4.2	1	0.1	551	58.4	24	2.5	26	2.8	23
	2016	814	2	0.2	126	15.5	138	17.0	266	32.7	43	5.3	1	0.1	440	54.1	21	2.6	27	3.3	16
Masters & IBHE Certificate	2012	876	1	0.1	132	15.1	107	12.2	240	27.4	36	4.1	1	0.1	524	59.8	27	3.1	22	2.5	26
	2013	982	0	0.0	149	15.2	147	15.0	296	30.1	33	3.4	0	0.0	571	58.1	22	2.2	22	2.2	38
	2014	854	1	0.1	126	14.8	129	15.1	256	30.0	45	5.3	0	0.0	490	57.4	15	1.8	18	2.1	30
	2015	912	2	0.2	112	12.3	152	16.7	266	29.2	38	4.2	1	0.1	544	59.6	23	2.5	19	2.1	21
	2016	789	2	0.3	119	15.1	137	17.4	258	32.7	42	5.3	1	0.1	430	54.5	20	2.5	22	2.8	16
Doctorate	2012	47	0	0.0	8	17.0	4	8.5	12	25.5	2	4.3	0	0.0	17	36.2	2	4.3	11	23.4	3
	2013	43	0	0.0	10	23.3	3	7.0	13	30.2	1	2.3	0	0.0	24	55.8	0	0.0	4	9.3	1
	2014	26	0	0.0	7	26.9	2	7.7	9	34.6	1	3.8	0	0.0	8	30.8	2	7.7	5	19.2	1
	2015	31	0	0.0	7	22.6	5	16.1	12	38.7	2	6.5	0	0.0	7	22.6	1	3.2	7	22.6	2
	2016	25	0	0.0	7	28.0	1	4.0	8	32.0	1	4.0	0	0.0	10	40.0	1	4.0	5	20.0	0
Non-Degree & Campus Certificate	2012	0	0	0.0	0	0.0	0	0.0	0	0.0	0	0.0	0	0.0	0	0.0	0	0.0	0	0.0	0
	2013	0	0	0.0	0	0.0	0	0.0	0	0.0	0	0.0	0	0.0	0	0.0	0	0.0	0	0.0	0
	2014	0	0	0.0	0	0.0	0	0.0	0	0.0	0	0.0	0	0.0	0	0.0	0	0.0	0	0.0	0
	2015	0	0	0.0	0	0.0	0	0.0	0	0.0	0	0.0	0	0.0	0	0.0	0	0.0	0	0.0	0
	2016	0	0	0.0	0	0.0	0	0.0	0	0.0	0	0.0	0	0.0	0	0.0	0	0.0	0	0.0	0

Note: URM stands for Under-Represented Minority and includes American Indian or Alaska Native; Black or African-American; Hispanic / Latino race/ethnicity groups

Applications - Total by Race/Ethnicity

College of Social Work
Fall 2012 - Fall 2016



Notes: 1) URM stands for Under-Represented Minority and includes American Indian or Alaska Native; Black or African-American; Hispanic / Latino race/ethnicity groups

2) Individual URM groups, Native Hawaiian Pacific Islander, Two or More Races, and Other race/ethnicity categories left off this charts due to relatively low numbers

Applications - Admitted

by Race/Ethnicity

College of Social Work

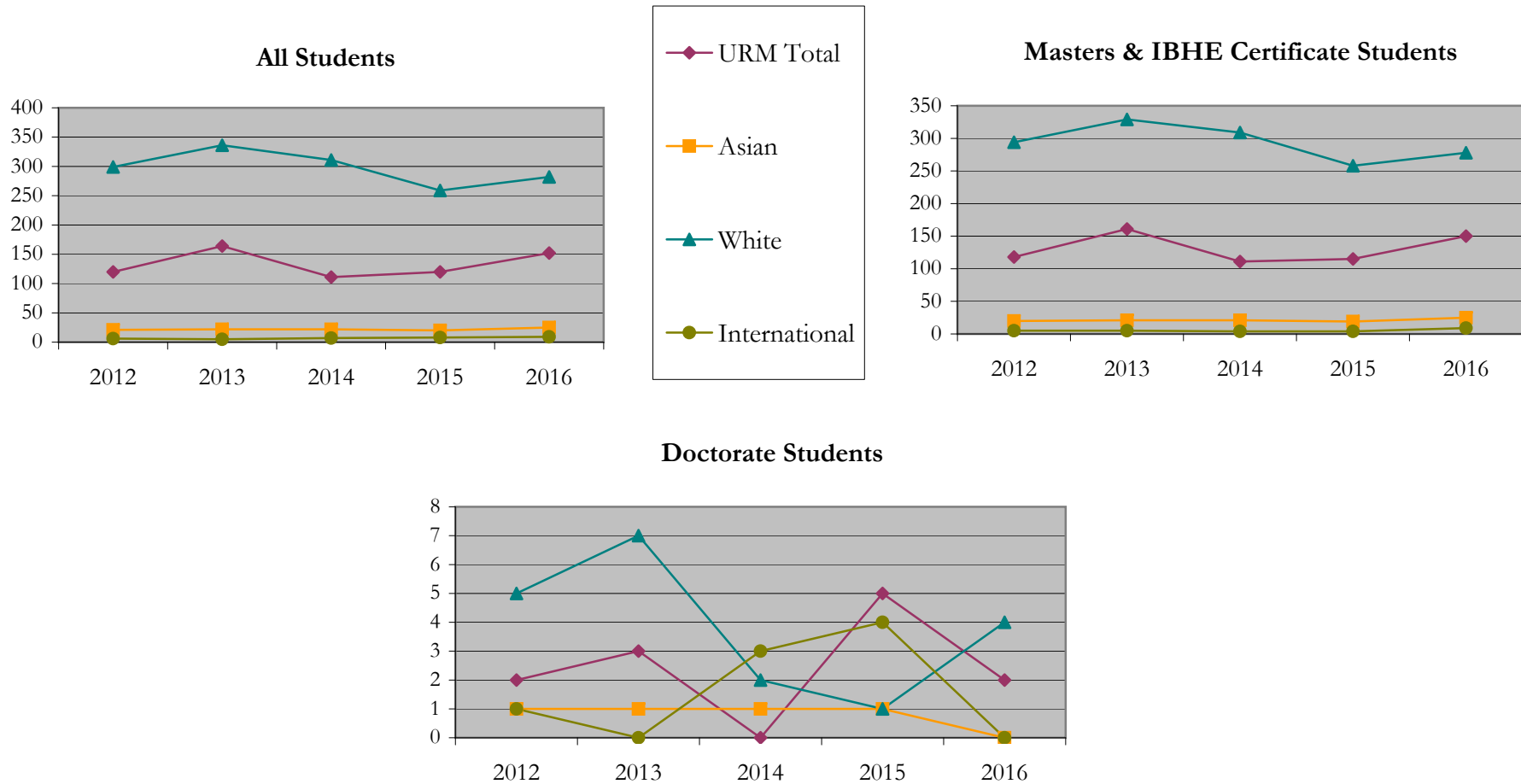
Fall 2012 - Fall 2016

		Total	Under Represented Minorities (URM)								Asian		Native Hawaiian or Pacific Islander		White		Two or More Races		International		Not Reported
			American Indian or Alaska Native		Black or African American		Hispanic / Latino		URM Total												
			Count	%	Count	%	Count	%	Count	%											
All	2012	476	0	0.0	60	12.6	60	12.6	120	25.2	21	4.4	0	0.0	299	62.8	17	3.6	6	1.3	13
	2013	565	0	0.0	62	11.0	102	18.1	164	29.0	22	3.9	0	0.0	336	59.5	12	2.1	5	0.9	26
	2014	476	1	0.2	47	9.9	63	13.2	111	23.3	22	4.6	0	0.0	311	65.3	6	1.3	7	1.5	19
	2015	427	1	0.2	54	12.6	65	15.2	120	28.1	20	4.7	1	0.2	259	60.7	11	2.6	8	1.9	8
	2016	486	2	0.4	69	14.2	81	16.7	152	31.3	25	5.1	1	0.2	282	58.0	10	2.1	9	1.9	7
Masters & IBHE Certificate	2012	465	0	0.0	58	12.5	60	12.9	118	25.4	20	4.3	0	0.0	294	63.2	15	3.2	5	1.1	13
	2013	553	0	0.0	60	10.8	101	18.3	161	29.1	21	3.8	0	0.0	329	59.5	12	2.2	5	0.9	25
	2014	470	1	0.2	47	10.0	63	13.4	111	23.6	21	4.5	0	0.0	309	65.7	6	1.3	4	0.9	19
	2015	415	1	0.2	50	12.0	64	15.4	115	27.7	19	4.6	1	0.2	258	62.2	11	2.7	4	1.0	7
	2016	480	2	0.4	67	14.0	81	16.9	150	31.3	25	5.2	1	0.2	278	57.9	10	2.1	9	1.9	7
Doctorate	2012	11	0	0.0	2	18.2	0	0.0	2	18.2	1	9.1	0	0.0	5	45.5	2	18.2	1	9.1	0
	2013	12	0	0.0	2	16.7	1	8.3	3	25.0	1	8.3	0	0.0	7	58.3	0	0.0	0	0.0	1
	2014	6	0	0.0	0	0.0	0	0.0	0	0.0	1	16.7	0	0.0	2	33.3	0	0.0	3	50.0	0
	2015	12	0	0.0	4	33.3	1	8.3	5	41.7	1	8.3	0	0.0	1	8.3	0	0.0	4	33.3	1
	2016	6	0	0.0	2	33.3	0	0.0	2	33.3	0	0.0	0	0.0	4	66.7	0	0.0	0	0.0	0
Non-Degree & Campus Certificate	2012	0	0	0.0	0	0.0	0	0.0	0	0.0	0	0.0	0	0.0	0	0.0	0	0.0	0	0.0	0
	2013	0	0	0.0	0	0.0	0	0.0	0	0.0	0	0.0	0	0.0	0	0.0	0	0.0	0	0.0	0
	2014	0	0	0.0	0	0.0	0	0.0	0	0.0	0	0.0	0	0.0	0	0.0	0	0.0	0	0.0	0
	2015	0	0	0.0	0	0.0	0	0.0	0	0.0	0	0.0	0	0.0	0	0.0	0	0.0	0	0.0	0
	2016	0	0	0.0	0	0.0	0	0.0	0	0.0	0	0.0	0	0.0	0	0.0	0	0.0	0	0.0	0

Note: URM stands for Under-Represented Minority and includes American Indian or Alaska Native; Black or African-American; Hispanic / Latino race/ethnicity groups

Applications - Admitted by Race/Ethnicity

College of Social Work
Fall 2012 - Fall 2016



Notes: 1) URM stands for Under-Represented Minority and includes American Indian or Alaska Native; Black or African-American; Hispanic / Latino race/ethnicity groups

2) Individual URM groups, Native Hawaiian Pacific Islander, Two or More Races, and Other race/ethnicity categories left off this charts due to relatively low numbers

**Enrollment - New
by Race/Ethnicity**

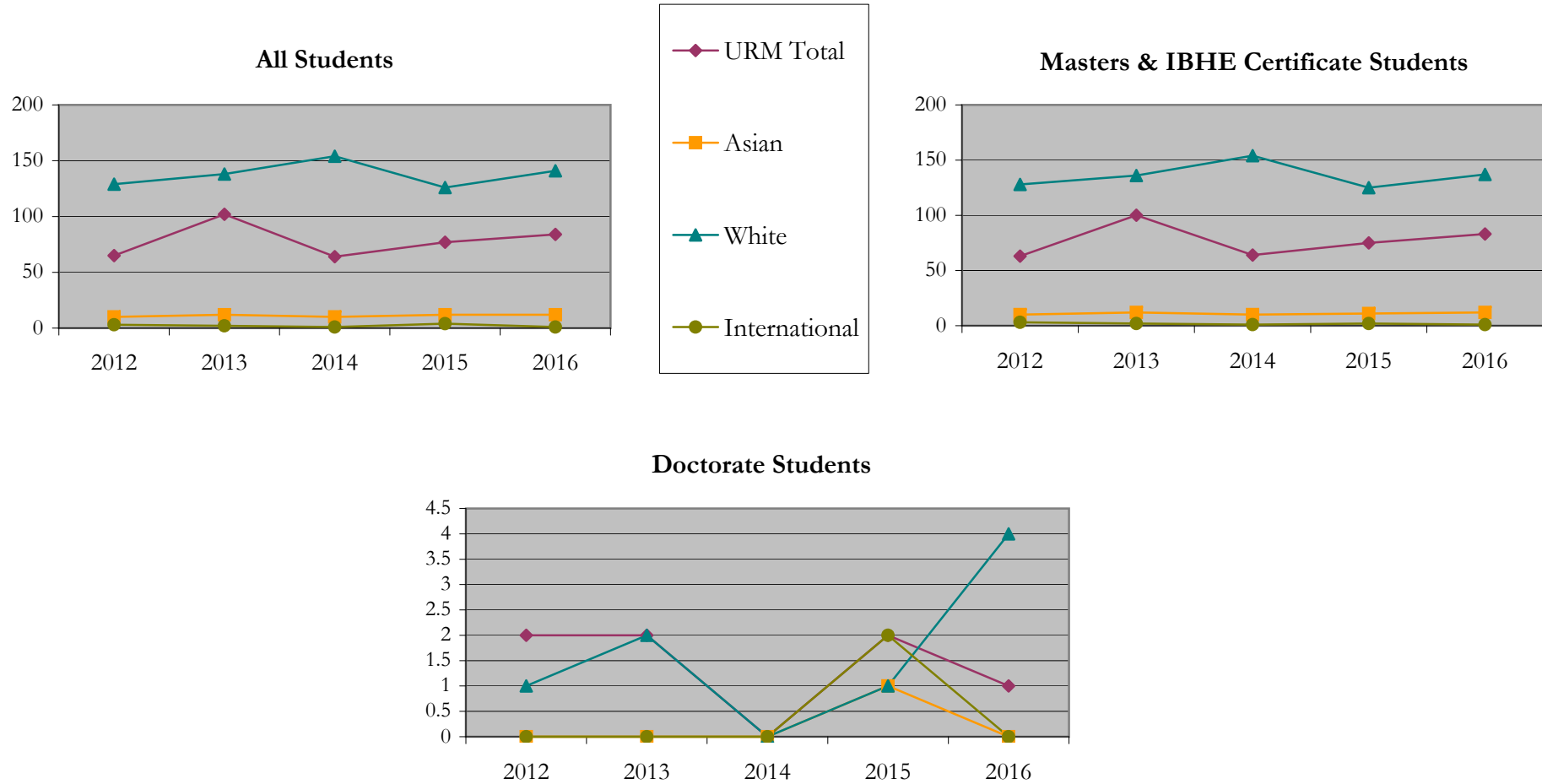
College of Social Work
Fall 2012 - Fall 2016

		Total	Under Represented Minorities (URM)								Asian		Native Hawaiian or Pacific Islander		White		Two or More Races		International		Not Reported
			American Indian or Alaska Native		Black or African American		Hispanic / Latino		URM Total												
			Count	%	Count	%	Count	%	Count	%											
All	2012	220	0	0.0	39	17.7	26	11.8	65	29.5	10	4.5	0	0.0	129	58.6	9	4.1	3	1.4	4
	2013	276	0	0.0	34	12.3	68	24.6	102	37.0	12	4.3	0	0.0	138	50.0	7	2.5	2	0.7	15
	2014	240	0	0.0	29	12.1	35	14.6	64	26.7	10	4.2	0	0.0	154	64.2	3	1.3	1	0.4	8
	2015	231	1	0.4	33	14.3	43	18.6	77	33.3	12	5.2	1	0.4	126	54.5	6	2.6	4	1.7	5
	2016	244	1	0.4	42	17.2	41	16.8	84	34.4	12	4.9	0	0.0	141	57.8	5	2.0	1	0.4	1
Masters & IBHE Certificate	2012	216	0	0.0	37	17.1	26	12.0	63	29.2	10	4.6	0	0.0	128	59.3	8	3.7	3	1.4	4
	2013	271	0	0.0	33	12.2	67	24.7	100	36.9	12	4.4	0	0.0	136	50.2	7	2.6	2	0.7	14
	2014	240	0	0.0	29	12.1	35	14.6	64	26.7	10	4.2	0	0.0	154	64.2	3	1.3	1	0.4	8
	2015	224	1	0.4	32	14.3	42	18.8	75	33.5	11	4.9	1	0.4	125	55.8	6	2.7	2	0.9	4
	2016	239	1	0.4	41	17.2	41	17.2	83	34.7	12	5.0	0	0.0	137	57.3	5	2.1	1	0.4	1
Doctorate	2012	4	0	0.0	2	50.0	0	0.0	2	50.0	0	0.0	0	0.0	1	25.0	1	25.0	0	0.0	0
	2013	5	0	0.0	1	20.0	1	20.0	2	40.0	0	0.0	0	0.0	2	40.0	0	0.0	0	0.0	1
	2014	0	0	0.0	0	0.0	0	0.0	0	0.0	0	0.0	0	0.0	0	0.0	0	0.0	0	0.0	0
	2015	7	0	0.0	1	14.3	1	14.3	2	28.6	1	14.3	0	0.0	1	14.3	0	0.0	2	28.6	1
	2016	5	0	0.0	1	20.0	0	0.0	1	20.0	0	0.0	0	0.0	4	80.0	0	0.0	0	0.0	0
Non-Degree & Campus Certificate	2012	0	0	0.0	0	0.0	0	0.0	0	0.0	0	0.0	0	0.0	0	0.0	0	0.0	0	0.0	0
	2013	0	0	0.0	0	0.0	0	0.0	0	0.0	0	0.0	0	0.0	0	0.0	0	0.0	0	0.0	0
	2014	0	0	0.0	0	0.0	0	0.0	0	0.0	0	0.0	0	0.0	0	0.0	0	0.0	0	0.0	0
	2015	0	0	0.0	0	0.0	0	0.0	0	0.0	0	0.0	0	0.0	0	0.0	0	0.0	0	0.0	0
	2016	0	0	0.0	0	0.0	0	0.0	0	0.0	0	0.0	0	0.0	0	0.0	0	0.0	0	0.0	0

Note: URM stands for Under-Represented Minority and includes American Indian or Alaska Native; Black or African-American; Hispanic / Latino race/ethnicity groups

Enrollment - New by Race/Ethnicity

College of Social Work
Fall 2012 - Fall 2016



Notes: 1) URM stands for Under-Represented Minority and includes American Indian or Alaska Native; Black or African-American; Hispanic / Latino race/ethnicity groups

2) Individual URM groups, Native Hawaiian Pacific Islander, Two or More Races, and Other race/ethnicity categories left off this charts due to relatively low numbers

**Enrollment - Total
by Race/Ethnicity**

College of Social Work

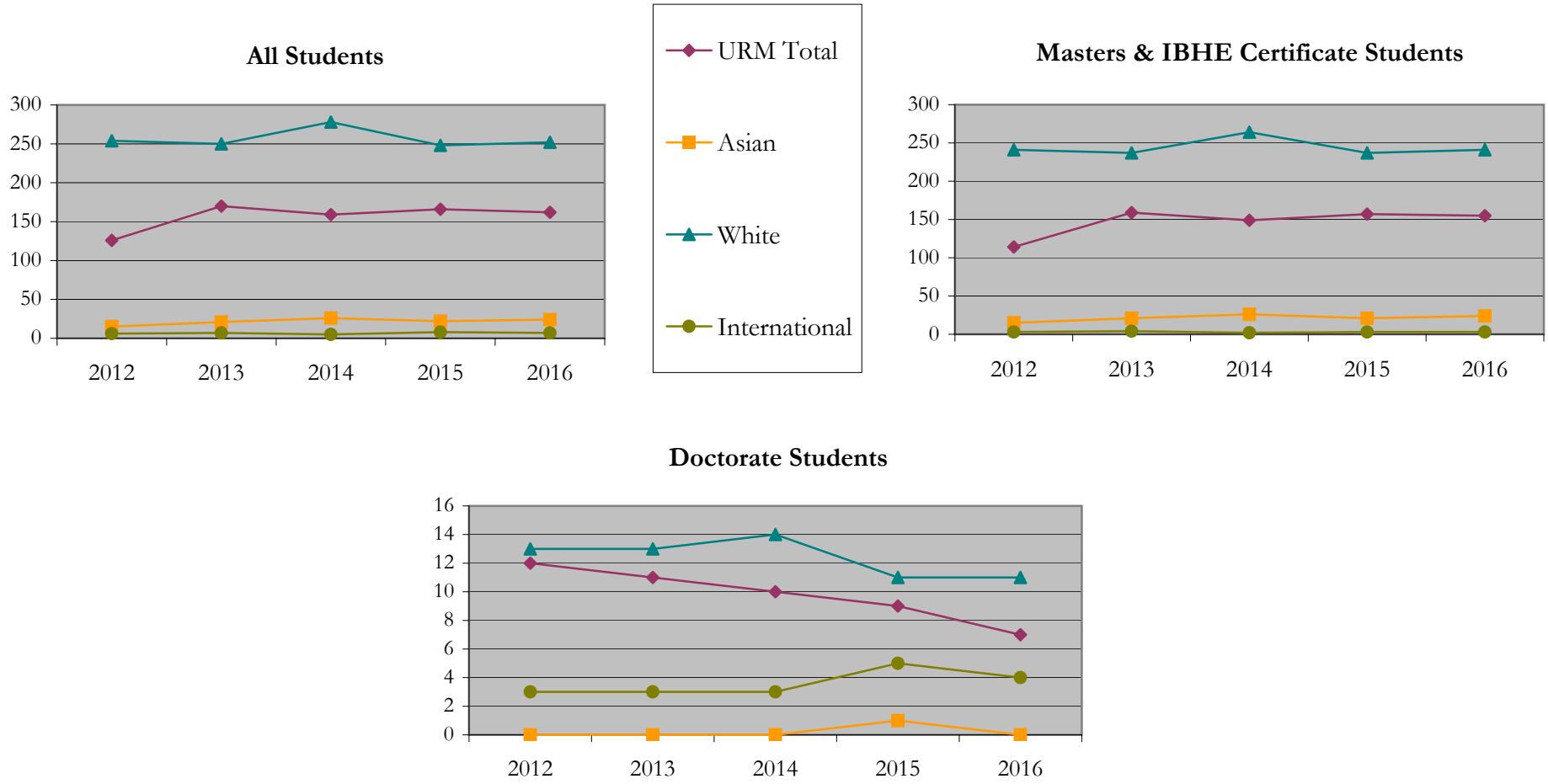
Fall 2012 - Fall 2016

		Total	Under Represented Minorities (URM)								Asian		Native Hawaiian or Pacific Islander		White		Two or More Races		International		Not Reported
			American Indian or Alaska Native		Black or African American		Hispanic / Latino		URM Total												
			Count	%	Count	%	Count	%	Count	%											
All	2012	427	0	0.0	68	15.9	58	13.6	126	29.5	15	3.5	0	0.0	254	59.5	15	3.5	6	1.4	11
	2013	483	0	0.0	74	15.3	96	19.9	170	35.2	21	4.3	0	0.0	250	51.8	19	3.9	7	1.4	16
	2014	496	0	0.0	67	13.5	92	18.5	159	32.1	26	5.2	0	0.0	278	56.0	10	2.0	5	1.0	18
	2015	475	1	0.2	72	15.2	93	19.6	166	34.9	22	4.6	1	0.2	248	52.2	13	2.7	8	1.7	17
	2016	460	2	0.4	80	17.4	80	17.4	162	35.2	24	5.2	0	0.0	252	54.8	11	2.4	7	1.5	4
Masters & IBHE Certificate	2012	397	0	0.0	60	15.1	54	13.6	114	28.7	15	3.8	0	0.0	241	60.7	14	3.5	3	0.8	10
	2013	453	0	0.0	66	14.6	93	20.5	159	35.1	21	4.6	0	0.0	237	52.3	18	4.0	4	0.9	14
	2014	466	0	0.0	61	13.1	88	18.9	149	32.0	26	5.6	0	0.0	264	56.7	9	1.9	2	0.4	16
	2015	445	1	0.2	67	15.1	89	20.0	157	35.3	21	4.7	1	0.2	237	53.3	12	2.7	3	0.7	14
	2016	437	2	0.5	76	17.4	77	17.6	155	35.5	24	5.5	0	0.0	241	55.1	11	2.5	3	0.7	3
Doctorate	2012	30	0	0.0	8	26.7	4	13.3	12	40.0	0	0.0	0	0.0	13	43.3	1	3.3	3	10.0	1
	2013	30	0	0.0	8	26.7	3	10.0	11	36.7	0	0.0	0	0.0	13	43.3	1	3.3	3	10.0	2
	2014	30	0	0.0	6	20.0	4	13.3	10	33.3	0	0.0	0	0.0	14	46.7	1	3.3	3	10.0	2
	2015	30	0	0.0	5	16.7	4	13.3	9	30.0	1	3.3	0	0.0	11	36.7	1	3.3	5	16.7	3
	2016	23	0	0.0	4	17.4	3	13.0	7	30.4	0	0.0	0	0.0	11	47.8	0	0.0	4	17.4	1
Non-Degree & Campus Certificate	2012	0	0	0.0	0	0.0	0	0.0	0	0.0	0	0.0	0	0.0	0	0.0	0	0.0	0	0.0	0
	2013	0	0	0.0	0	0.0	0	0.0	0	0.0	0	0.0	0	0.0	0	0.0	0	0.0	0	0.0	0
	2014	0	0	0.0	0	0.0	0	0.0	0	0.0	0	0.0	0	0.0	0	0.0	0	0.0	0	0.0	0
	2015	0	0	0.0	0	0.0	0	0.0	0	0.0	0	0.0	0	0.0	0	0.0	0	0.0	0	0.0	0
	2016	0	0	0.0	0	0.0	0	0.0	0	0.0	0	0.0	0	0.0	0	0.0	0	0.0	0	0.0	0

Note: URM stands for Under-Represented Minority and includes American Indian or Alaska Native; Black or African-American; Hispanic / Latino race/ethnicity groups

Enrollment - Total by Race/Ethnicity

College of Social Work
Fall 2012 - Fall 2016



Notes: 1) URM stands for Under-Represented Minority and includes American Indian or Alaska Native; Black or African-American; Hispanic / Latino race/ethnicity groups

2) Individual URM groups, Native Hawaiian Pacific Islander, Two or More Races, and Other race/ethnicity categories left off this charts due to relatively low numbers

Enrollment

by Student Type, Enrollment Time, and Gender

College of Social Work

Fall 2012 - Fall 2016

		Total	New		Continuing		Male		Female		Gender Not Reported	Part-time		Full-time	
			Count	%	Count	%	Count	%	Count	%		Count	%	Count	%
All	2012	427	220	51.5	207	48.5	62	14.5	360	84.3	5	96	22.5	331	77.5
	2013	483	276	57.1	207	42.9	61	12.6	414	85.7	8	108	22.4	375	77.6
	2014	496	240	48.4	256	51.6	76	15.3	415	83.7	5	91	18.3	405	81.7
	2015	475	231	48.6	244	51.4	71	14.9	400	84.2	4	85	17.9	390	82.1
	2016	460	244	53.0	216	47.0	66	14.3	391	85.0	3	106	23.0	354	77.0
Masters & IBHE Certificate	2012	397	216	54.4	181	45.6	56	14.1	336	84.6	5	87	21.9	310	78.1
	2013	453	271	59.8	182	40.2	57	12.6	388	85.7	8	101	22.3	352	77.7
	2014	466	240	51.5	226	48.5	70	15.0	391	83.9	5	80	17.2	386	82.8
	2015	445	224	50.3	221	49.7	64	14.4	377	84.7	4	74	16.6	371	83.4
	2016	437	239	54.7	198	45.3	61	14.0	373	85.4	3	94	21.5	343	78.5
Doctorate	2012	30	4	13.3	26	86.7	6	20.0	24	80.0	0	9	30.0	21	70.0
	2013	30	5	16.7	25	83.3	4	13.3	26	86.7	0	7	23.3	23	76.7
	2014	30	0	0.0	30	100.0	6	20.0	24	80.0	0	11	36.7	19	63.3
	2015	30	7	23.3	23	76.7	7	23.3	23	76.7	0	11	36.7	19	63.3
	2016	23	5	21.7	18	78.3	5	21.7	18	78.3	0	12	52.2	11	47.8
Non-Degree & Campus Certificate	2012	0	0	0.0	0	0.0	0	0.0	0	0.0	0	0	0.0	0	0.0
	2013	0	0	0.0	0	0.0	0	0.0	0	0.0	0	0	0.0	0	0.0
	2014	0	0	0.0	0	0.0	0	0.0	0	0.0	0	0	0.0	0	0.0
	2015	0	0	0.0	0	0.0	0	0.0	0	0.0	0	0	0.0	0	0.0
	2016	0	0	0.0	0	0.0	0	0.0	0	0.0	0	0	0.0	0	0.0

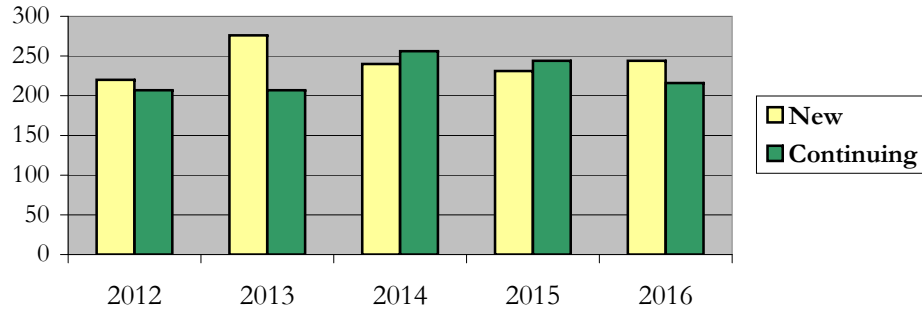
Enrollment

by Student Type, Enrollment Time, and Gender (All Students)

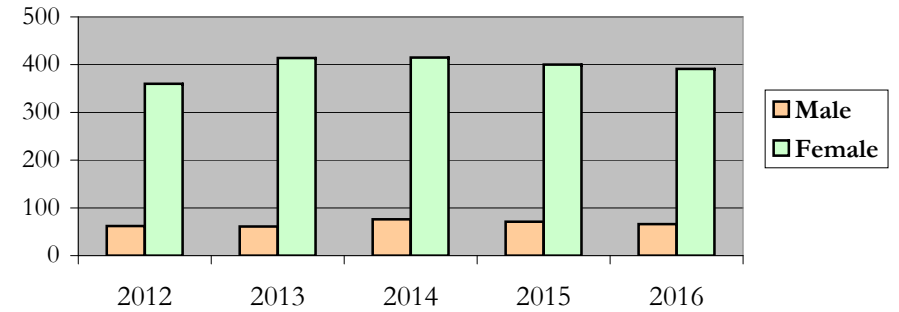
College of Social Work

Fall 2012 - Fall 2016

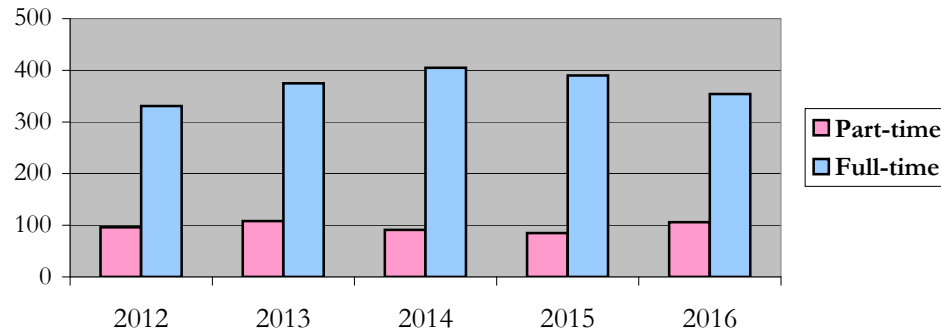
New and Continuing Enrollment



Enrollment by Gender



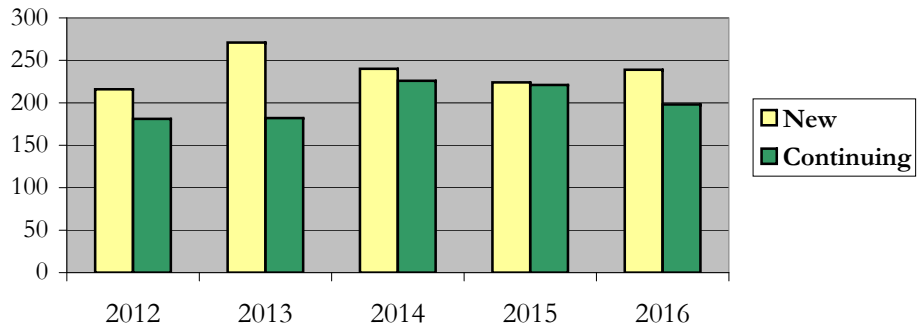
Enrollment by Student Enrollment Time



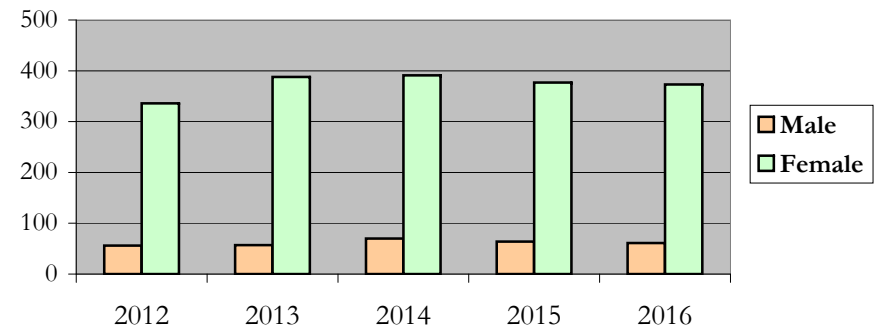
Enrollment
by Student Type, Enrollment Time, and Gender (Master's Students)

College of Social Work
 Fall 2012 - Fall 2016

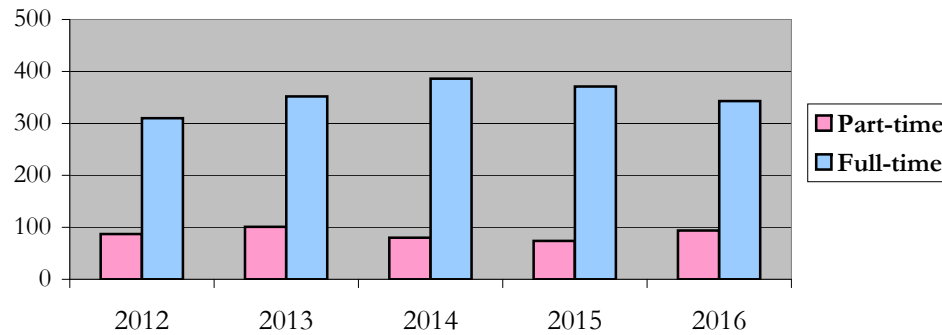
New and Continuing Enrollment



Enrollment by Gender



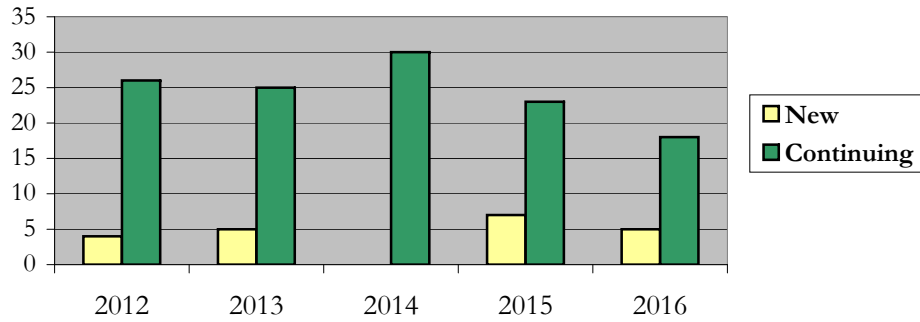
Enrollment by Student Enrollment Time



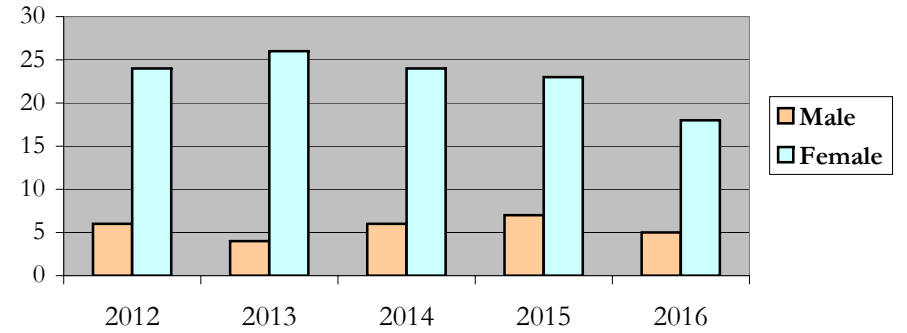
Enrollment
by Student Type, Enrollment Time, and Gender (Doctorate Students)

College of Social Work
 Fall 2012 - Fall 2016

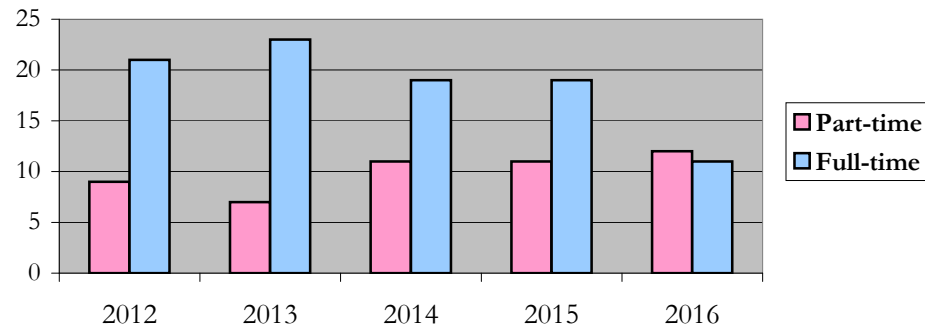
New and Continuing Enrollment



Enrollment by Gender



Enrollment by Student Enrollment Time



Degrees Conferred by Race/Ethnicity

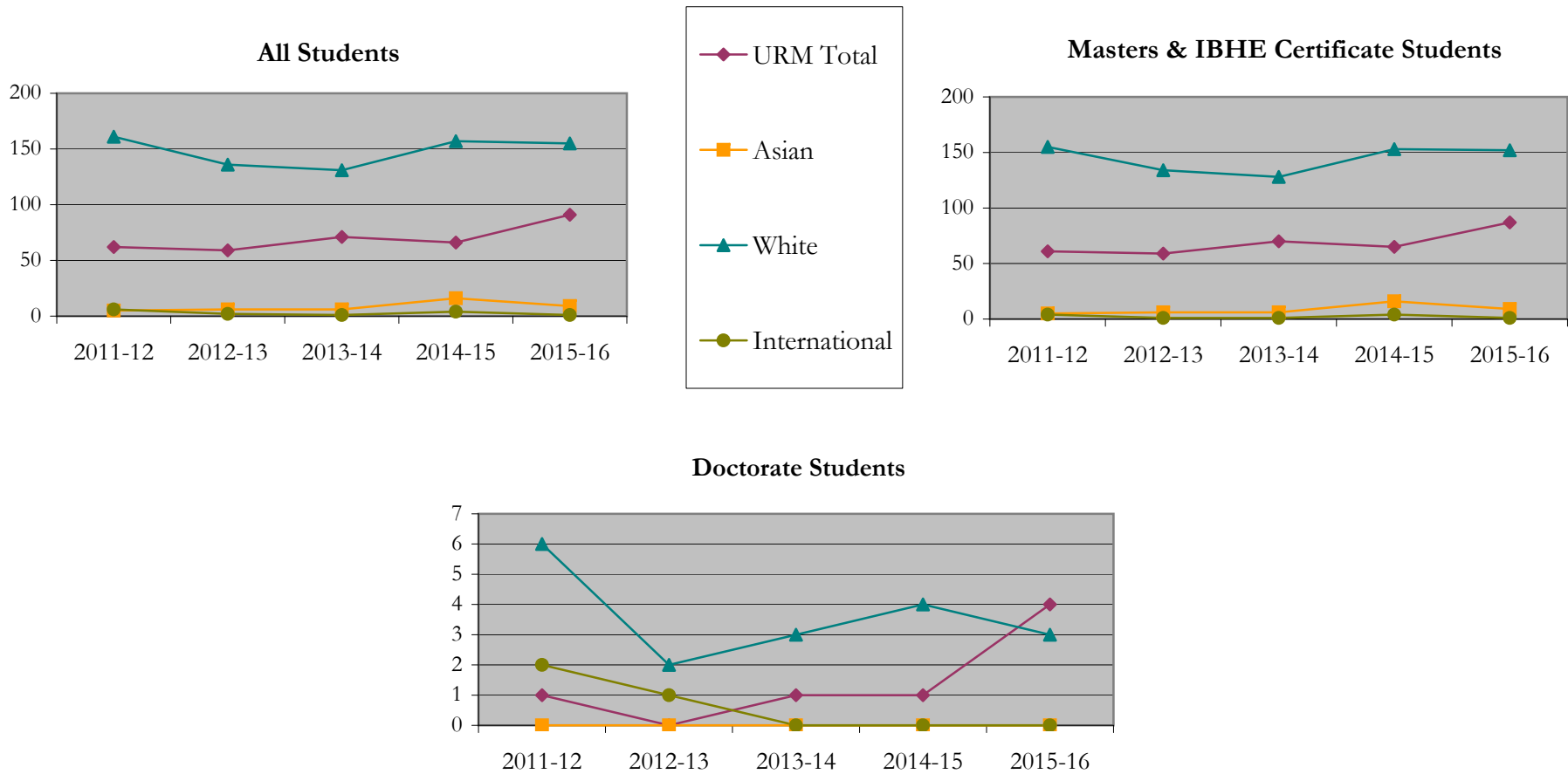
College of Social Work
Fall 2012 - Fall 2016

		Total	Under Represented Minorities (URM)								Asian	Native Hawaiian or Pacific Islander	White	Two or More Races	International	Not Reported					
			American Indian or Alaska Native		Black or African American		Hispanic / Latino		URM Total												
			Count	%	Count	%	Count	%	Count	%							Count	%	Count	%	Count
All	2011 - 12	245	1	0.4	29	11.8	32	13.1	62	25.3	5	2.0	0	0.0	161	65.7	4	1.6	6	2.4	7
	2012 - 13	214	0	0.0	28	13.1	31	14.5	59	27.6	6	2.8	0	0.0	136	63.6	2	0.9	2	0.9	9
	2013 - 14	225	0	0.0	35	15.6	36	16.0	71	31.6	6	2.7	0	0.0	131	58.2	11	4.9	1	0.4	5
	2014 - 15	252	0	0.0	25	9.9	41	16.3	66	26.2	16	6.3	0	0.0	157	62.3	3	1.2	4	1.6	6
	2015 - 16	270	1	0.4	32	11.9	58	21.5	91	33.7	9	3.3	1	0.4	155	57.4	10	3.7	1	0.4	3
Masters & IBHE Certificate	2011 - 12	236	1	0.4	29	12.3	31	13.1	61	25.8	5	2.1	0	0.0	155	65.7	4	1.7	4	1.7	7
	2012 - 13	211	0	0.0	28	13.3	31	14.7	59	28.0	6	2.8	0	0.0	134	63.5	2	0.9	1	0.5	9
	2013 - 14	221	0	0.0	34	15.4	36	16.3	70	31.7	6	2.7	0	0.0	128	57.9	11	5.0	1	0.5	5
	2014 - 15	247	0	0.0	24	9.7	41	16.6	65	26.3	16	6.5	0	0.0	153	61.9	3	1.2	4	1.6	6
	2015 - 16	262	1	0.4	30	11.5	56	21.4	87	33.2	9	3.4	1	0.4	152	58.0	9	3.4	1	0.4	3
Doctorate	2011 - 12	9	0	0.0	0	0.0	1	11.1	1	11.1	0	0.0	0	0.0	6	66.7	0	0.0	2	22.2	0
	2012 - 13	3	0	0.0	0	0.0	0	0.0	0	0.0	0	0.0	0	0.0	2	66.7	0	0.0	1	33.3	0
	2013 - 14	4	0	0.0	1	25.0	0	0.0	1	25.0	0	0.0	0	0.0	3	75.0	0	0.0	0	0.0	0
	2014 - 15	5	0	0.0	1	20.0	0	0.0	1	20.0	0	0.0	0	0.0	4	80.0	0	0.0	0	0.0	0
	2015 - 16	8	0	0.0	2	25.0	2	25.0	4	50.0	0	0.0	0	0.0	3	37.5	1	12.5	0	0.0	0
Non-Degree & Campus Certificate	2011 - 12	0	0	0.0	0	0.0	0	0.0	0	0.0	0	0.0	0	0.0	0	0.0	0	0.0	0	0.0	0
	2012 - 13	0	0	0.0	0	0.0	0	0.0	0	0.0	0	0.0	0	0.0	0	0.0	0	0.0	0	0.0	0
	2013 - 14	0	0	0.0	0	0.0	0	0.0	0	0.0	0	0.0	0	0.0	0	0.0	0	0.0	0	0.0	0
	2014 - 15	0	0	0.0	0	0.0	0	0.0	0	0.0	0	0.0	0	0.0	0	0.0	0	0.0	0	0.0	0
	2015 - 16	0	0	0.0	0	0.0	0	0.0	0	0.0	0	0.0	0	0.0	0	0.0	0	0.0	0	0.0	0

Note: Each row represents a fiscal year, beginning with Summer term and ending with Spring.

Degrees Conferred by Race/Ethnicity

College of Social Work
Fall 2012 - Fall 2016



Notes: 1) URM stands for Under-Represented Minority and includes American Indian or Alaska Native; Black or African-American; Hispanic / Latino race/ethnicity groups

2) Individual URM groups, Native Hawaiian Pacific Islander, Two or More Races, and Other race/ethnicity categories left off this charts due to relatively low numbers

**Degrees Conferred
by Gender**

College of Social Work
Fall 2012 - Fall 2016

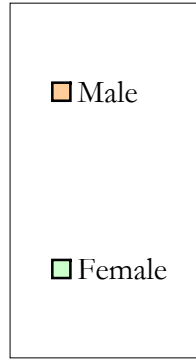
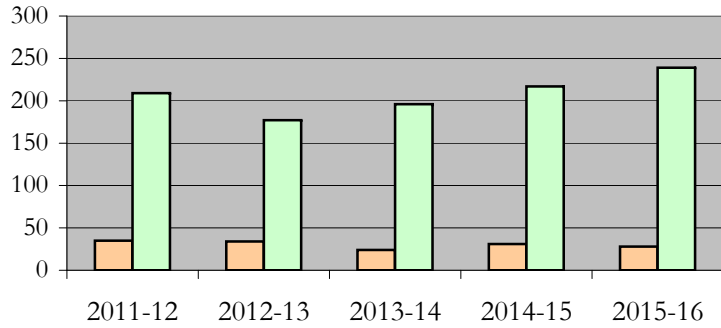
		Total	Male		Female		Not Reported
			Count	%	Count	%	
All	2011 - 12	245	35	14.3	209	85.3	1
	2012 - 13	214	34	15.9	177	82.7	3
	2013 - 14	225	24	10.7	196	87.1	5
	2014 - 15	252	31	12.3	217	86.1	4
	2015 - 16	270	28	10.4	239	88.5	3
Masters & IBHE Certificate	2011 - 12	236	33	14.0	202	85.6	1
	2012 - 13	211	33	15.6	175	82.9	3
	2013 - 14	221	23	10.4	193	87.3	5
	2014 - 15	247	31	12.6	212	85.8	4
	2015 - 16	262	26	9.9	233	88.9	3
Doctorate	2011 - 12	9	2	22.2	7	77.8	0
	2012 - 13	3	1	33.3	2	66.7	0
	2013 - 14	4	1	25.0	3	75.0	0
	2014 - 15	5	0	0.0	5	100.0	0
	2015 - 16	8	2	25.0	6	75.0	0
Campus Certificates	2011 - 12	0	0	0.0	0	0.0	0
	2012 - 13	0	0	0.0	0	0.0	0
	2013 - 14	0	0	0.0	0	0.0	0
	2014 - 15	0	0	0.0	0	0.0	0
	2015 - 16	0	0	0.0	0	0.0	0

Note: Each row represents a fiscal year, beginning with Summer term and ending with Spring.

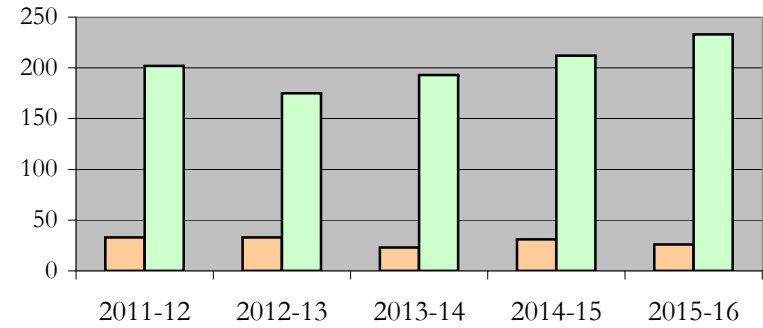
Degrees Conferred by Gender

College of Social Work
Fall 2012 - Fall 2016

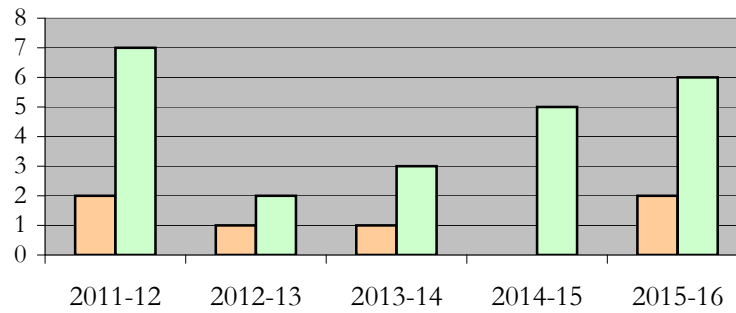
All Students



Masters & IBHE Certificate Students



Doctorate Students



Appendix A

College of Social Work

Fall 2012 - Fall 2016

List of program codes included in this document

20FS0365MSW

20FS0365PHD

20FS5124CERT

20FY1635DRPH

20FY1638DRPH

20GL0365MSW

20GL5124CERT

Notes: 1) Program codes are sorted by alphabetical order in column-wise fashion

2) Program codes highlighted in yellow did not have applications, enrollment, nor degrees conferred in the covered period