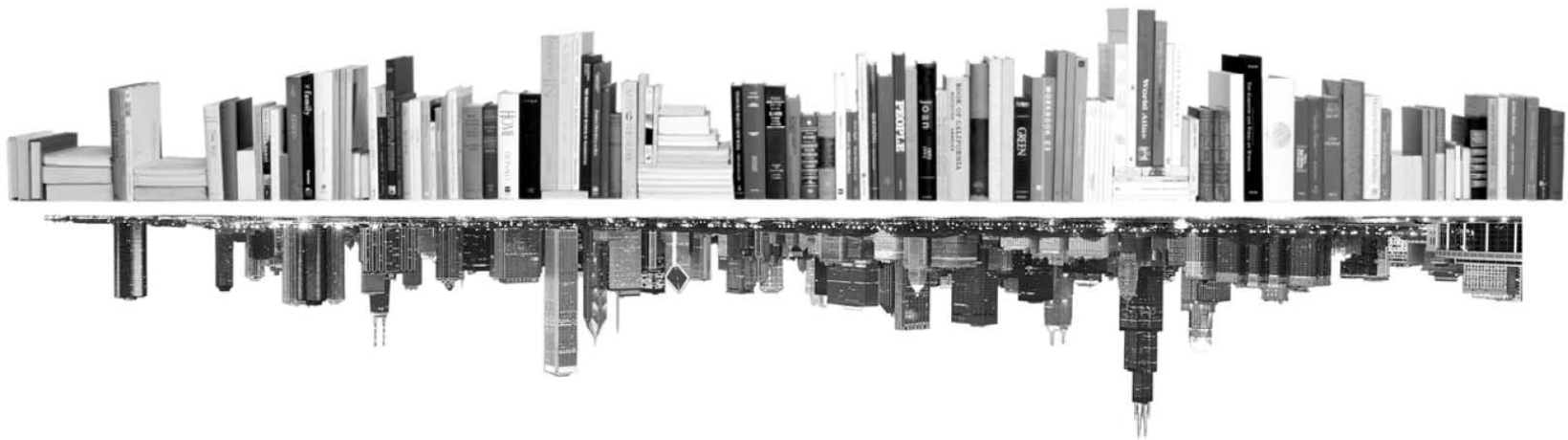


**GRADUATE
COLLEGE**



**ENROLLMENT MANAGEMENT REPORT
SCHOOL PROFILE
PUBLIC HEALTH
FALL 2017**





INTRODUCTION – COLLEGE PROFILE

The following college profile has been developed to tailor our annual enrollment report to your school’s data.

The college profile report tracks students, not enrollments. This means that students with dual enrollments are reported only once – under their first program.

Kevin Monahan
Director of Graduate Program Review and Information Systems
Graduate College, University of Illinois at Chicago
Voice: 312.413.0410 Email: kmonahan@uic.edu

TABLE OF CONTENTS

MATRICULATION	
Diversity Pipeline	1
APPLICATIONS	
by Race/Ethnicity	2 – 5
ENROLLMENT	
by Race/Ethnicity	6 – 9
by Type, Time, & Gender	10 – 13
DEGREES	
by Race/Ethnicity	14 – 15
by Gender	16 – 17
List of academic programs included in this report	Appendix A

Matriculation

Diversity Pipeline

School of Public Health

Fall 2013 - Fall 2017

	Fall Semester Year	Applied					Admitted					Non-URM Admitted to Applied Yield %	URM Admitted to Applied Yield %	New Enrollment					Non-URM Enrolled to Admitted Yield %	URM Enrolled to Admitted Yield %	Total Enrollment				
		Grand Total	Non-URM Total		URM Total		Grand Total	Non-URM Total		URM Total				Grand Total	Non-URM Total		URM Total				Grand Total	Non-URM Total		URM Total	
			Count	%	Count	%		Count	%	Count	%				Count	%	Count	%				Count	%	Count	%
All	2013	1451	1122	77.3%	329	22.7%	894	738	82.6%	156	17.4%	65.8%	47.4%	301	228	75.7%	73	24.3%	30.9%	46.8%	866	662	76.4%	204	23.6%
	2014	1394	1075	77.1%	319	22.9%	842	696	82.7%	146	17.3%	64.7%	45.8%	303	223	73.6%	80	26.4%	32.0%	54.8%	871	659	75.7%	212	24.3%
	2015	1299	1016	78.2%	283	21.8%	696	560	80.5%	136	19.5%	55.1%	48.1%	276	199	72.1%	77	27.9%	35.5%	56.6%	875	649	74.2%	226	25.8%
	2016	1196	957	80.0%	239	20.0%	664	546	82.2%	118	17.8%	57.1%	49.4%	207	157	75.8%	50	24.2%	28.8%	42.4%	740	569	76.9%	171	23.1%
	2017	1042	821	78.8%	221	21.2%	639	524	82.0%	115	18.0%	63.8%	52.0%	244	189	77.5%	55	22.5%	36.1%	47.8%	693	530	76.5%	163	23.5%
	Average	1276	998	78.2%	278	21.8%	747	613	82.0%	134	18.0%	61.4%	48.2%	266	199	74.8%	67	25.2%	32.5%	49.9%	809	614	75.9%	195	24.1%
Masters & IBHE Certificate	2013	991	793	80.0%	198	20.0%	712	597	83.8%	115	16.2%	75.3%	58.1%	212	164	77.4%	48	22.6%	27.5%	41.7%	538	407	75.7%	131	24.3%
	2014	923	752	81.5%	171	18.5%	669	564	84.3%	105	15.7%	75.0%	61.4%	224	165	73.7%	59	26.3%	29.3%	56.2%	571	426	74.6%	145	25.4%
	2015	847	675	79.7%	172	20.3%	557	454	81.5%	103	18.5%	67.3%	59.9%	190	139	73.2%	51	26.8%	30.6%	49.5%	554	408	73.6%	146	26.4%
	2016	834	681	81.7%	153	18.3%	568	465	81.9%	103	18.1%	68.3%	67.3%	159	116	73.0%	43	27.0%	24.9%	41.7%	481	363	75.5%	118	24.5%
	2017	744	598	80.4%	146	19.6%	556	455	81.8%	101	18.2%	76.1%	69.2%	200	155	77.5%	45	22.5%	34.1%	44.6%	463	350	75.6%	113	24.4%
	Average	868	700	80.6%	168	19.4%	612	507	82.8%	105	17.2%	72.4%	62.7%	197	148	75.0%	49	25.0%	29.2%	46.7%	521	391	75.0%	131	25.0%
Doctorate	2013	297	214	72.1%	83	27.9%	65	54	83.1%	11	16.9%	25.2%	13.3%	26	17	65.4%	9	34.6%	31.5%	81.8%	194	153	78.9%	41	21.1%
	2014	337	228	67.7%	109	32.3%	73	61	83.6%	12	16.4%	26.8%	11.0%	33	26	78.8%	7	21.2%	42.6%	58.3%	188	148	78.7%	40	21.3%
	2015	328	251	76.5%	77	23.5%	53	44	83.0%	9	17.0%	17.5%	11.7%	29	20	69.0%	9	31.0%	45.5%	100.0%	206	161	78.2%	45	21.8%
	2016	306	232	75.8%	74	24.2%	65	55	84.6%	10	15.4%	23.7%	13.5%	30	26	86.7%	4	13.3%	47.3%	40.0%	190	154	81.1%	36	18.9%
	2017	268	200	74.6%	68	25.4%	67	56	83.6%	11	16.4%	28.0%	16.2%	30	22	73.3%	8	26.7%	39.3%	72.7%	197	154	78.2%	43	21.8%
	Average	307	225	73.2%	82	26.8%	65	54	83.6%	11	16.4%	24.0%	12.9%	30	22	75.0%	7	25.0%	41.1%	69.8%	195	154	79.0%	41	21.0%
Non-Degree & Campus Certificate	2013	163	115	70.6%	48	29.4%	117	87	74.4%	30	25.6%	75.7%	62.5%	63	47	74.6%	16	25.4%	54.0%	53.3%	134	102	76.1%	32	23.9%
	2014	134	95	70.9%	39	29.1%	100	71	71.0%	29	29.0%	74.7%	74.4%	46	32	69.6%	14	30.4%	45.1%	48.3%	112	85	75.9%	27	24.1%
	2015	124	90	72.6%	34	27.4%	86	62	72.1%	24	27.9%	68.9%	70.6%	57	40	70.2%	17	29.8%	64.5%	70.8%	115	80	69.6%	35	30.4%
	2016	56	44	78.6%	12	21.4%	31	26	83.9%	5	16.1%	59.1%	41.7%	18	15	83.3%	3	16.7%	57.7%	60.0%	69	52	75.4%	17	24.6%
	2017	30	23	76.7%	7	23.3%	16	13	81.3%	3	18.8%	56.5%	42.9%	14	12	85.7%	2	14.3%	92.3%	66.7%	33	26	78.8%	7	21.2%
	Average	101	73	72.4%	28	27.6%	70	52	74.0%	18	26.0%	70.6%	65.0%	40	29	73.7%	10	26.3%	56.4%	57.1%	93	69	74.5%	24	25.5%

Note: URM stands for Under-Represented Minority and includes American Indian or Alaska Native; Black or African-American; Hispanic / Latino race/ethnicity groups

Applications - Total

by Race/Ethnicity

School of Public Health

Fall 2013 - Fall 2017

		Total	Under Represented Minorities (URM)																Not Reported		
			American Indian or Alaska Native		Black or African American		Hispanic / Latino		URM Total		Asian		Native Hawaiian or Pacific Islander		White		Two or More Races			International	
			Count	%	Count	%	Count	%	Count	%	Count	%	Count	%	Count	%	Count	%		Count	%
All	2013	1450	0	0.0	209	14.4	120	8.3	329	22.7	190	13.1	4	0.3	584	40.3	35	2.4	218	15.0	90
	2014	1403	2	0.1	204	14.5	113	8.1	319	22.7	215	15.3	1	0.1	538	38.3	38	2.7	217	15.5	75
	2015	1299	3	0.2	169	13.0	111	8.5	283	21.8	202	15.6	0	0.0	464	35.7	35	2.7	265	20.4	50
	2016	1196	2	0.2	151	12.6	86	7.2	239	20.0	188	15.7	3	0.3	432	36.1	31	2.6	250	20.9	53
	2017	1042	7	0.7	127	12.2	87	8.3	221	21.2	173	16.6	0	0.0	383	36.8	33	3.2	203	19.5	29
Masters & IBHE Certificate	2013	991	0	0.0	121	12.2	77	7.8	198	20.0	140	14.1	3	0.3	426	43.0	26	2.6	127	12.8	71
	2014	923	1	0.1	96	10.4	74	8.0	171	18.5	157	17.0	1	0.1	383	41.5	24	2.6	129	14.0	58
	2015	847	0	0.0	93	11.0	79	9.3	172	20.3	160	18.9	0	0.0	330	39.0	25	3.0	127	15.0	33
	2016	834	1	0.1	87	10.4	65	7.8	153	18.3	146	17.5	2	0.2	316	37.9	25	3.0	153	18.3	39
	2017	744	5	0.7	75	10.1	66	8.9	146	19.6	135	18.1	0	0.0	296	39.8	26	3.5	122	16.4	19
Doctorate	2013	296	0	0.0	63	21.3	20	6.8	83	28.0	29	9.8	0	0.0	90	30.4	4	1.4	80	27.0	10
	2014	337	0	0.0	84	24.9	25	7.4	109	32.3	27	8.0	0	0.0	92	27.3	12	3.6	83	24.6	14
	2015	328	3	0.9	54	16.5	20	6.1	77	23.5	21	6.4	0	0.0	85	25.9	7	2.1	124	37.8	14
	2016	306	1	0.3	55	18.0	18	5.9	74	24.2	32	10.5	1	0.3	88	28.8	5	1.6	96	31.4	10
	2017	268	2	0.7	48	17.9	18	6.7	68	25.4	36	13.4	0	0.0	69	25.7	6	2.2	80	29.9	9
Non-Degree & Campus Certificate	2013	163	0	0.0	25	15.3	23	14.1	48	29.4	21	12.9	1	0.6	68	41.7	5	3.1	11	6.7	9
	2014	143	1	0.7	24	16.8	14	9.8	39	27.3	31	21.7	0	0.0	63	44.1	2	1.4	5	3.5	3
	2015	124	0	0.0	22	17.7	12	9.7	34	27.4	21	16.9	0	0.0	49	39.5	3	2.4	14	11.3	3
	2016	56	0	0.0	9	16.1	3	5.4	12	21.4	10	17.9	0	0.0	28	50.0	1	1.8	1	1.8	4
	2017	30	0	0.0	4	13.3	3	10.0	7	23.3	2	6.7	0	0.0	18	60.0	1	3.3	1	3.3	1

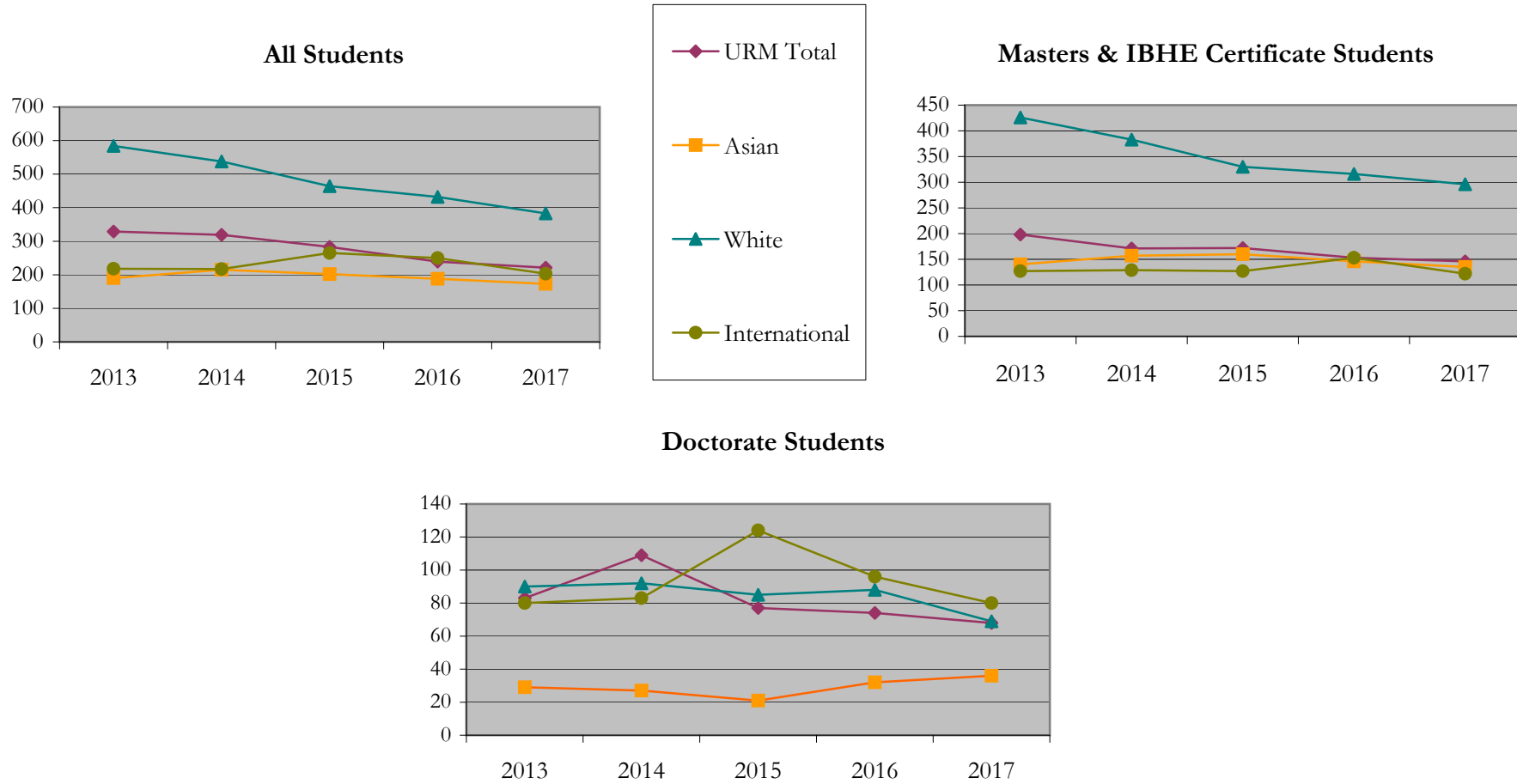
Note: URM stands for Under-Represented Minority and includes American Indian or Alaska Native; Black or African-American; Hispanic / Latino race/ethnicity groups

Applications - Total

by Race/Ethnicity

School of Public Health

Fall 2013 - Fall 2017



Notes: 1) URM stands for Under-Represented Minority and includes American Indian or Alaska Native; Black or African-American; Hispanic / Latino race/ethnicity groups

2) Individual URM groups, Native Hawaiian Pacific Islander, Two or More Races, and Other race/ethnicity categories left off this charts due to relatively low numbers

Applications - Admitted

by Race/Ethnicity

School of Public Health

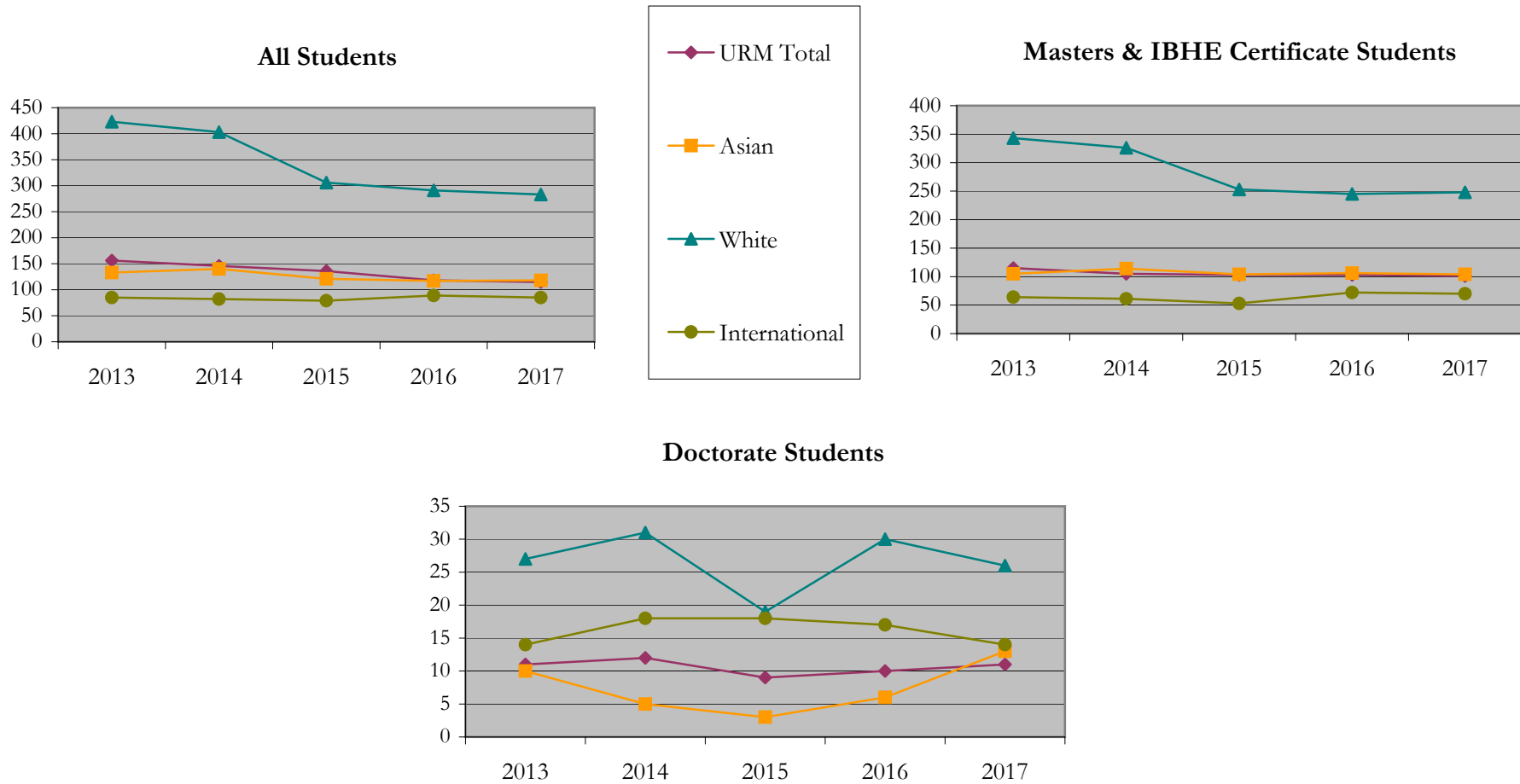
Fall 2013 - Fall 2017

		Total	Under Represented Minorities (URM)								Asian		Native Hawaiian or Pacific Islander		White		Two or More Races		International		Not Reported
			American Indian or Alaska Native		Black or African American		Hispanic / Latino		URM Total												
			Count	%	Count	%	Count	%	Count	%											
All	2013	894	0	0.0	89	10.0	67	7.5	156	17.4	133	14.9	4	0.4	423	47.3	22	2.5	85	9.5	71
	2014	842	2	0.2	76	9.0	68	8.1	146	17.3	140	16.6	1	0.1	403	47.9	23	2.7	82	9.7	47
	2015	696	1	0.1	70	10.1	65	9.3	136	19.5	121	17.4	0	0.0	306	44.0	23	3.3	79	11.4	31
	2016	664	1	0.2	62	9.3	55	8.3	118	17.8	117	17.6	1	0.2	291	43.8	19	2.9	89	13.4	29
	2017	639	4	0.6	54	8.5	57	8.9	115	18.0	118	18.5	0	0.0	283	44.3	22	3.4	85	13.3	16
Masters & IBHE Certificate	2013	712	0	0.0	69	9.7	46	6.5	115	16.2	105	14.7	3	0.4	343	48.2	21	2.9	64	9.0	61
	2014	669	1	0.1	49	7.3	55	8.2	105	15.7	114	17.0	1	0.1	326	48.7	19	2.8	61	9.1	43
	2015	557	0	0.0	50	9.0	53	9.5	103	18.5	104	18.7	0	0.0	253	45.4	17	3.1	53	9.5	27
	2016	568	1	0.2	52	9.2	50	8.8	103	18.1	106	18.7	1	0.2	245	43.1	17	3.0	72	12.7	24
	2017	556	4	0.7	44	7.9	53	9.5	101	18.2	104	18.7	0	0.0	248	44.6	20	3.6	70	12.6	13
Doctorate	2013	65	0	0.0	7	10.8	4	6.2	11	16.9	10	15.4	0	0.0	27	41.5	0	0.0	14	21.5	3
	2014	73	0	0.0	8	11.0	4	5.5	12	16.4	5	6.8	0	0.0	31	42.5	3	4.1	18	24.7	4
	2015	53	1	1.9	5	9.4	3	5.7	9	17.0	3	5.7	0	0.0	19	35.8	3	5.7	18	34.0	1
	2016	65	0	0.0	6	9.2	4	6.2	10	15.4	6	9.2	0	0.0	30	46.2	1	1.5	17	26.2	1
	2017	67	0	0.0	7	10.4	4	6.0	11	16.4	13	19.4	0	0.0	26	38.8	1	1.5	14	20.9	2
Non-Degree & Campus Certificate	2013	117	0	0.0	13	11.1	17	14.5	30	25.6	18	15.4	1	0.9	53	45.3	1	0.9	7	6.0	7
	2014	100	1	1.0	19	19.0	9	9.0	29	29.0	21	21.0	0	0.0	46	46.0	1	1.0	3	3.0	0
	2015	86	0	0.0	15	17.4	9	10.5	24	27.9	14	16.3	0	0.0	34	39.5	3	3.5	8	9.3	3
	2016	31	0	0.0	4	12.9	1	3.2	5	16.1	5	16.1	0	0.0	16	51.6	1	3.2	0	0.0	4
	2017	16	0	0.0	3	18.8	0	0.0	3	18.8	1	6.3	0	0.0	9	56.3	1	6.3	1	6.3	1

Note: URM stands for Under-Represented Minority and includes American Indian or Alaska Native; Black or African-American; Hispanic / Latino race/ethnicity groups

Applications - Admitted by Race/Ethnicity

School of Public Health
Fall 2013 - Fall 2017



Notes: 1) URM stands for Under-Represented Minority and includes American Indian or Alaska Native; Black or African-American; Hispanic / Latino race/ethnicity groups
2) Individual URM groups, Native Hawaiian Pacific Islander, Two or More Races, and Other race/ethnicity categories left off this charts due to relatively low numbers

**Enrollment - New
by Race/Ethnicity**

School of Public Health

Fall 2013 - Fall 2017

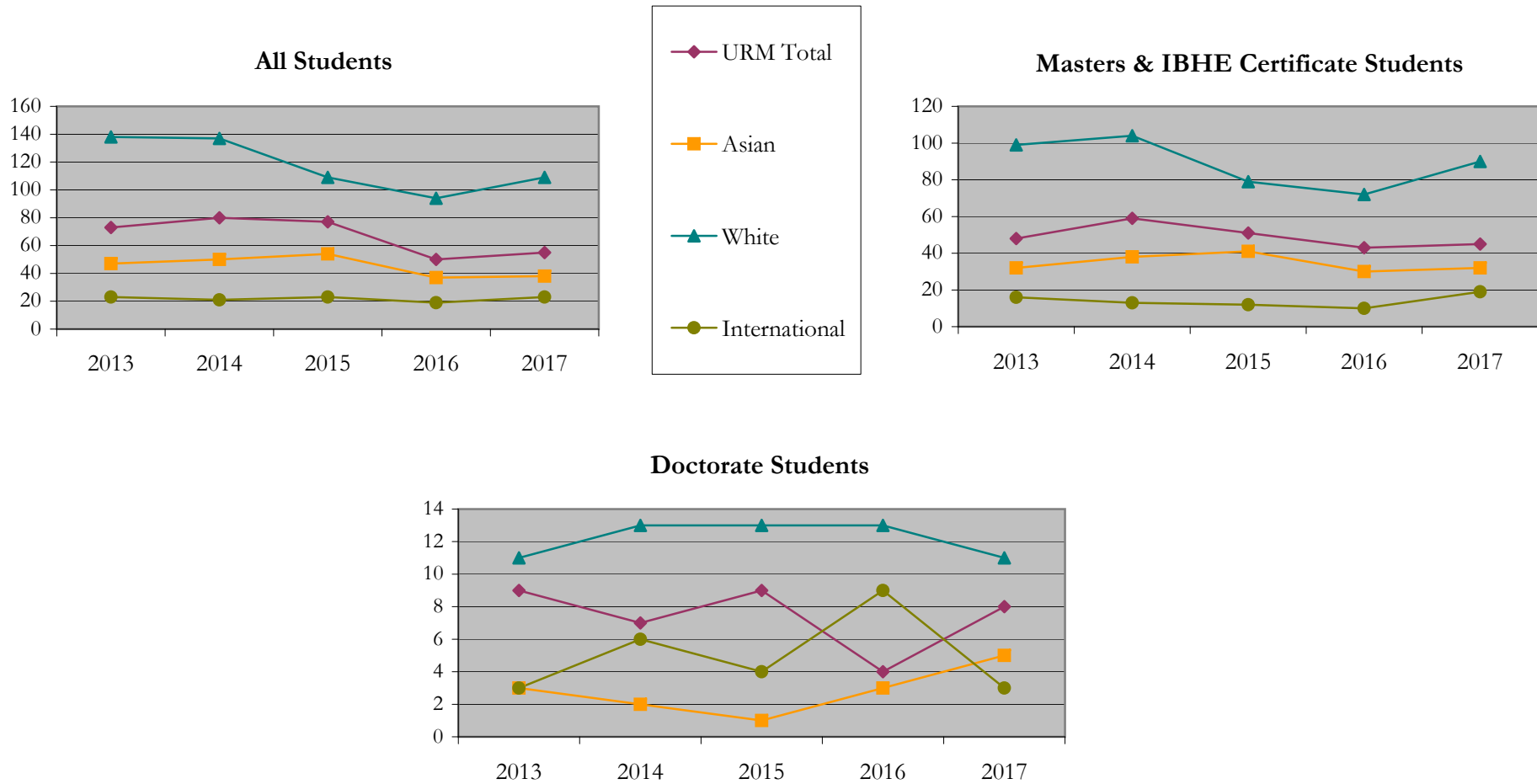
		Total	Under Represented Minorities (URM)										Asian		Native Hawaiian or Pacific Islander		White		Two or More Races		International		Not Reported
			American Indian or Alaska Native		Black or African American		Hispanic / Latino		URM Total		Count	%	Count	%	Count	%	Count	%	Count	%	Count	%	Count
			Count	%	Count	%	Count	%	Count	%													
All	2013	301	0	0.0	37	12.3	36	12.0	73	24.3	47	15.6	4	1.3	138	45.8	9	3.0	23	7.6	7		
	2014	303	2	0.7	47	15.5	31	10.2	80	26.4	50	16.5	0	0.0	137	45.2	6	2.0	21	6.9	9		
	2015	276	1	0.4	38	13.8	38	13.8	77	27.9	54	19.6	0	0.0	109	39.5	7	2.5	23	8.3	6		
	2016	207	1	0.5	25	12.1	24	11.6	50	24.2	37	17.9	1	0.5	94	45.4	3	1.4	19	9.2	3		
	2017	244	3	1.2	23	9.4	29	11.9	55	22.5	38	15.6	0	0.0	109	44.7	13	5.3	23	9.4	6		
Masters & IBHE Certificate	2013	212	0	0.0	26	12.3	22	10.4	48	22.6	32	15.1	3	1.4	99	46.7	9	4.2	16	7.5	5		
	2014	224	1	0.4	32	14.3	26	11.6	59	26.3	38	17.0	0	0.0	104	46.4	4	1.8	13	5.8	6		
	2015	190	0	0.0	25	13.2	26	13.7	51	26.8	41	21.6	0	0.0	79	41.6	3	1.6	12	6.3	4		
	2016	159	1	0.6	20	12.6	22	13.8	43	27.0	30	18.9	1	0.6	72	45.3	2	1.3	10	6.3	1		
	2017	200	3	1.5	15	7.5	27	13.5	45	22.5	32	16.0	0	0.0	90	45.0	11	5.5	19	9.5	3		
Doctorate	2013	26	0	0.0	6	23.1	3	11.5	9	34.6	3	11.5	0	0.0	11	42.3	0	0.0	3	11.5	0		
	2014	33	0	0.0	5	15.2	2	6.1	7	21.2	2	6.1	0	0.0	13	39.4	2	6.1	6	18.2	3		
	2015	29	1	3.4	4	13.8	4	13.8	9	31.0	1	3.4	0	0.0	13	44.8	2	6.9	4	13.8	0		
	2016	30	0	0.0	3	10.0	1	3.3	4	13.3	3	10.0	0	0.0	13	43.3	1	3.3	9	30.0	0		
	2017	30	0	0.0	6	20.0	2	6.7	8	26.7	5	16.7	0	0.0	11	36.7	1	3.3	3	10.0	2		
Non-Degree & Campus Certificate	2013	63	0	0.0	5	7.9	11	17.5	16	25.4	12	19.0	1	1.6	28	44.4	0	0.0	4	6.3	2		
	2014	46	1	2.2	10	21.7	3	6.5	14	30.4	10	21.7	0	0.0	20	43.5	0	0.0	2	4.3	0		
	2015	57	0	0.0	9	15.8	8	14.0	17	29.8	12	21.1	0	0.0	17	29.8	2	3.5	7	12.3	2		
	2016	18	0	0.0	2	11.1	1	5.6	3	16.7	4	22.2	0	0.0	9	50.0	0	0.0	0	0.0	2		
	2017	14	0	0.0	2	14.3	0	0.0	2	14.3	1	7.1	0	0.0	8	57.1	1	7.1	1	7.1	1		

Note: URM stands for Under-Represented Minority and includes American Indian or Alaska Native; Black or African-American; Hispanic / Latino race/ethnicity groups

Enrollment - New by Race/Ethnicity

School of Public Health

Fall 2013 - Fall 2017



Notes: 1) URM stands for Under-Represented Minority and includes American Indian or Alaska Native; Black or African-American; Hispanic / Latino race/ethnicity groups

2) Individual URM groups, Native Hawaiian Pacific Islander, Two or More Races, and Other race/ethnicity categories left off this charts due to relatively low numbers

**Enrollment - Total
by Race/Ethnicity**

School of Public Health

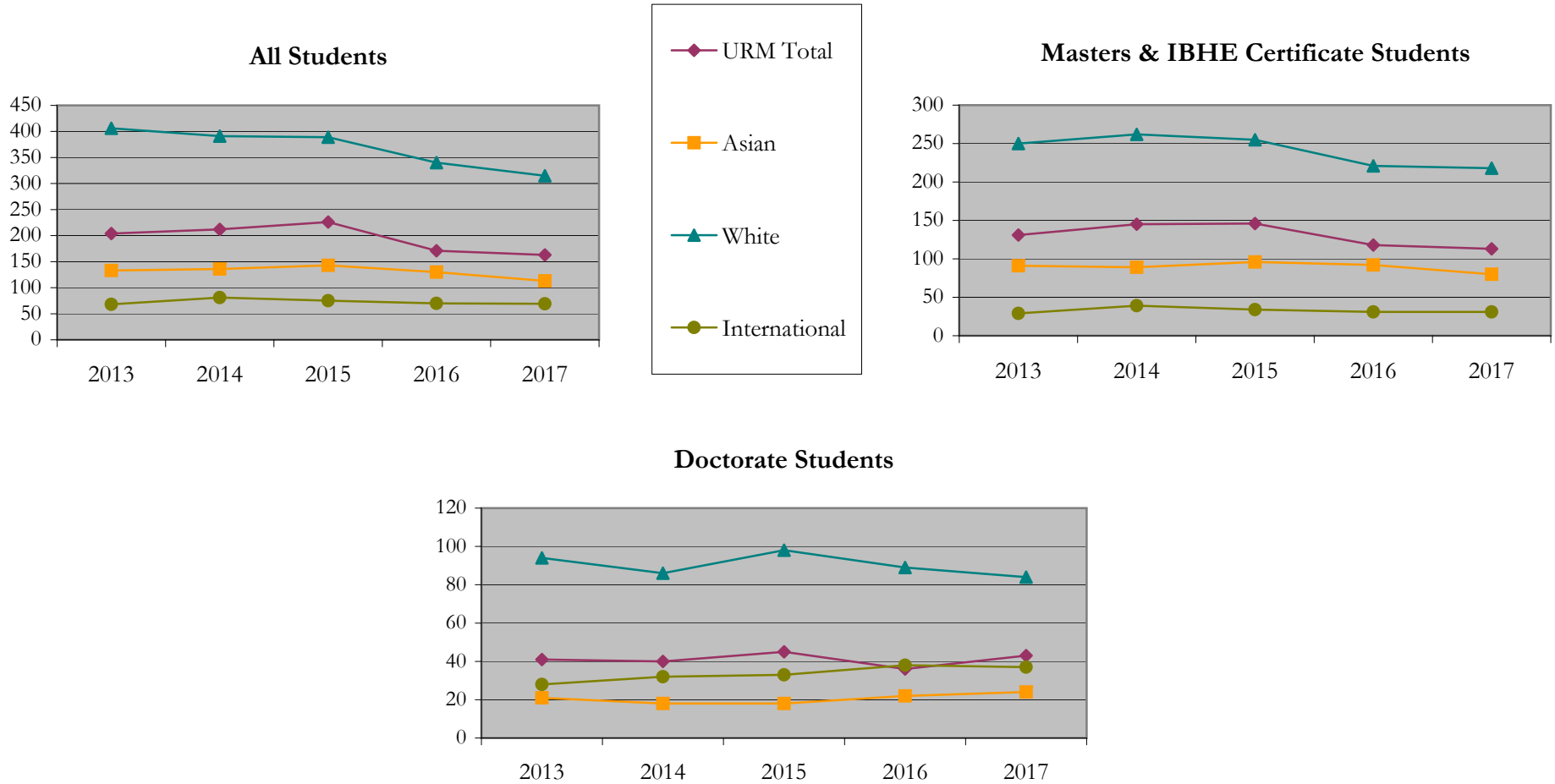
Fall 2013 - Fall 2017

		Total	Under Represented Minorities (URM)										Asian		Native Hawaiian or Pacific Islander		White		Two or More Races		International		Not Reported
			American Indian or Alaska Native		Black or African American		Hispanic / Latino		URM Total		Count	%	Count	%	Count	%	Count	%	Count	%	Count	%	Count
			Count	%	Count	%	Count	%	Count	%													
All	2013	866	0	0.0	118	13.6	86	9.9	204	23.6	133	15.4	5	0.6	406	46.9	28	3.2	68	7.9	22		
	2014	871	2	0.2	128	14.7	82	9.4	212	24.3	136	15.6	3	0.3	391	44.9	24	2.8	81	9.3	24		
	2015	875	2	0.2	130	14.9	94	10.7	226	25.8	143	16.3	2	0.2	389	44.5	24	2.7	75	8.6	16		
	2016	740	2	0.3	83	11.2	86	11.6	171	23.1	130	17.6	1	0.1	340	45.9	17	2.3	70	9.5	11		
	2017	693	5	0.7	76	11.0	82	11.8	163	23.5	113	16.3	0	0.0	315	45.5	23	3.3	69	10.0	10		
Masters & IBHE Certificate	2013	538	0	0.0	80	14.9	51	9.5	131	24.3	91	16.9	4	0.7	250	46.5	20	3.7	29	5.4	13		
	2014	571	1	0.2	84	14.7	60	10.5	145	25.4	89	15.6	3	0.5	262	45.9	16	2.8	39	6.8	17		
	2015	554	1	0.2	80	14.4	65	11.7	146	26.4	96	17.3	2	0.4	255	46.0	12	2.2	34	6.1	9		
	2016	481	1	0.2	52	10.8	65	13.5	118	24.5	92	19.1	1	0.2	221	45.9	10	2.1	31	6.4	8		
	2017	463	4	0.9	44	9.5	65	14.0	113	24.4	80	17.3	0	0.0	218	47.1	16	3.5	31	6.7	5		
Doctorate	2013	194	0	0.0	24	12.4	17	8.8	41	21.1	21	10.8	0	0.0	94	48.5	6	3.1	28	14.4	4		
	2014	188	0	0.0	27	14.4	13	6.9	40	21.3	18	9.6	0	0.0	86	45.7	6	3.2	32	17.0	6		
	2015	206	1	0.5	30	14.6	14	6.8	45	21.8	18	8.7	0	0.0	98	47.6	7	3.4	33	16.0	5		
	2016	190	1	0.5	22	11.6	13	6.8	36	18.9	22	11.6	0	0.0	89	46.8	4	2.1	38	20.0	1		
	2017	197	1	0.5	27	13.7	15	7.6	43	21.8	24	12.2	0	0.0	84	42.6	5	2.5	37	18.8	4		
Non-Degree & Campus Certificate	2013	134	0	0.0	14	10.4	18	13.4	32	23.9	21	15.7	1	0.7	62	46.3	2	1.5	11	8.2	5		
	2014	112	1	0.9	17	15.2	9	8.0	27	24.1	29	25.9	0	0.0	43	38.4	2	1.8	10	8.9	1		
	2015	115	0	0.0	20	17.4	15	13.0	35	30.4	29	25.2	0	0.0	36	31.3	5	4.3	8	7.0	2		
	2016	69	0	0.0	9	13.0	8	11.6	17	24.6	16	23.2	0	0.0	30	43.5	3	4.3	1	1.4	2		
	2017	33	0	0.0	5	15.2	2	6.1	7	21.2	9	27.3	0	0.0	13	39.4	2	6.1	1	3.0	1		

Note: URM stands for Under-Represented Minority and includes American Indian or Alaska Native; Black or African-American; Hispanic / Latino race/ethnicity groups

Enrollment - Total by Race/Ethnicity

School of Public Health
Fall 2013 - Fall 2017



Notes: 1) URM stands for Under-Represented Minority and includes American Indian or Alaska Native; Black or African-American; Hispanic / Latino race/ethnicity groups
 2) Individual URM groups, Native Hawaiian Pacific Islander, Two or More Races, and Other race/ethnicity categories left off this charts due to relatively low numbers

Enrollment

by Student Type, Enrollment Time, and Gender

School of Public Health

Fall 2013 - Fall 2017

		Total	New		Continuing		Male		Female		Gender Not Reported	Part-time		Full-time	
			Count	%	Count	%	Count	%	Count	%		Count	%	Count	%
All	2013	866	301	34.8	565	65.2	238	27.5	625	72.2	3	419	48.4	447	51.6
	2014	871	303	34.8	568	65.2	240	27.6	624	71.6	7	385	44.2	486	55.8
	2015	875	276	31.5	599	68.5	245	28.0	622	71.1	8	389	44.5	486	55.5
	2016	740	207	28.0	533	72.0	208	28.1	524	70.8	8	318	43.0	422	57.0
	2017	693	244	35.2	449	64.8	175	25.3	510	73.6	8	255	36.8	438	63.2
Masters & IBHE Certificate	2013	538	212	39.4	326	60.6	134	24.9	403	74.9	1	187	34.8	351	65.2
	2014	571	224	39.2	347	60.8	147	25.7	418	73.2	6	190	33.3	381	66.7
	2015	554	190	34.3	364	65.7	153	27.6	396	71.5	5	179	32.3	375	67.7
	2016	481	159	33.1	322	66.9	138	28.7	337	70.1	6	155	32.2	326	67.8
	2017	463	200	43.2	263	56.8	114	24.6	344	74.3	5	103	22.2	360	77.8
Doctorate	2013	194	26	13.4	168	86.6	60	30.9	134	69.1	0	115	59.3	79	40.7
	2014	188	33	17.6	155	82.4	56	29.8	132	70.2	0	110	58.5	78	41.5
	2015	206	29	14.1	177	85.9	57	27.7	147	71.4	2	126	61.2	80	38.8
	2016	190	30	15.8	160	84.2	46	24.2	142	74.7	2	119	62.6	71	37.4
	2017	197	30	15.2	167	84.8	49	24.9	145	73.6	3	129	65.5	68	34.5
Non-Degree & Campus Certificate	2013	134	63	47.0	71	53.0	44	32.8	88	65.7	2	117	87.3	17	12.7
	2014	112	46	41.1	66	58.9	37	33.0	74	66.1	1	85	75.9	27	24.1
	2015	115	57	49.6	58	50.4	35	30.4	79	68.7	1	84	73.0	31	27.0
	2016	69	18	26.1	51	73.9	24	34.8	45	65.2	0	44	63.8	25	36.2
	2017	33	14	42.4	19	57.6	12	36.4	21	63.6	0	23	69.7	10	30.3

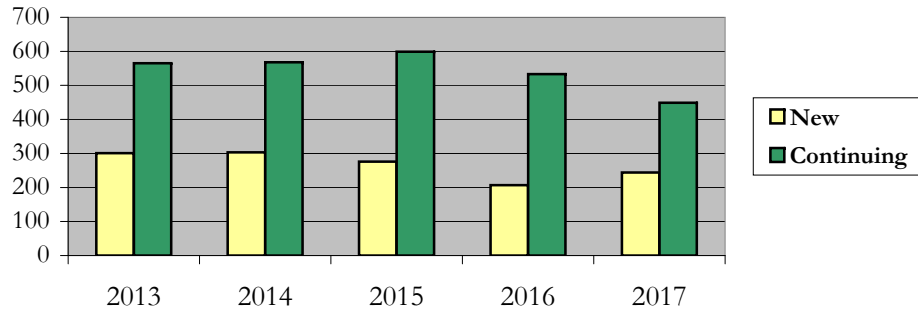
Enrollment

by Student Type, Enrollment Time, and Gender (All Students)

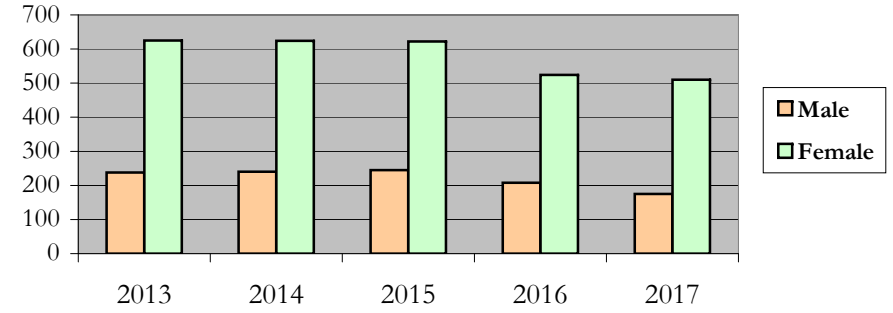
School of Public Health

Fall 2013 - Fall 2017

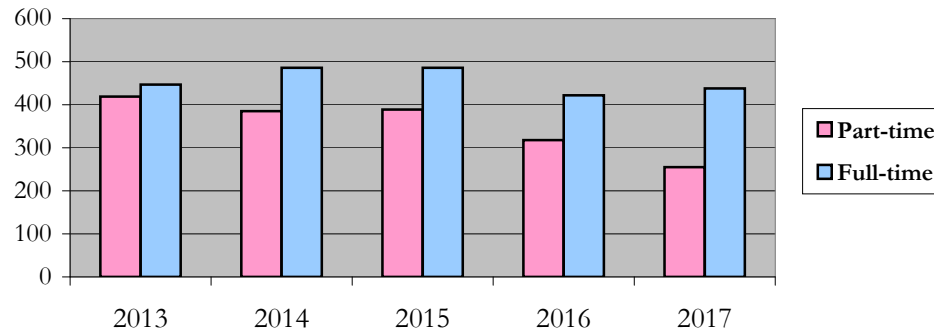
New and Continuing Enrollment



Enrollment by Gender



Enrollment by Student Enrollment Time

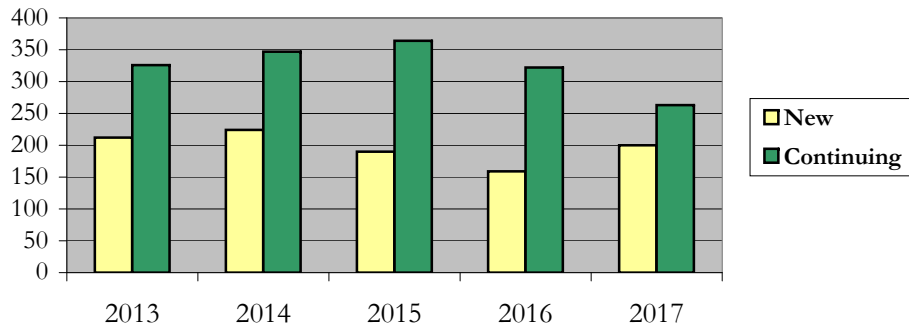


Enrollment
by Student Type, Enrollment Time, and Gender (Master's Students)

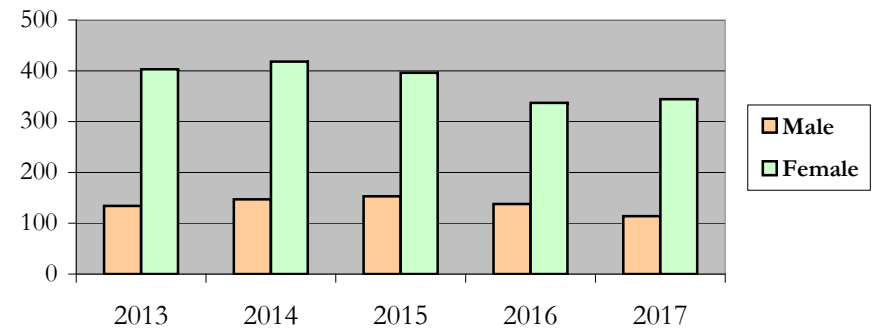
School of Public Health

Fall 2013 - Fall 2017

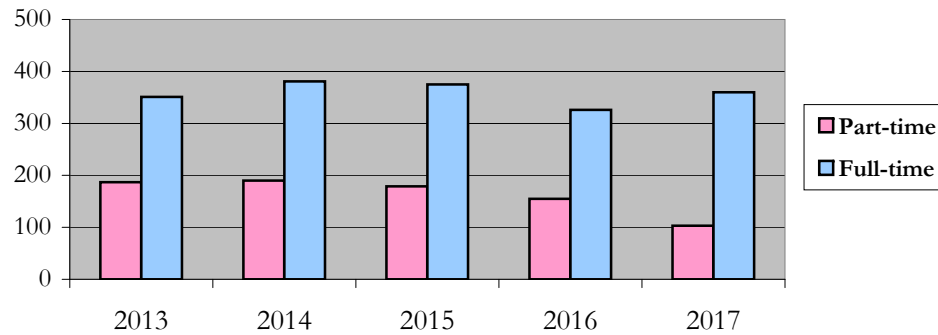
New and Continuing Enrollment



Enrollment by Gender



Enrollment by Student Enrollment Time



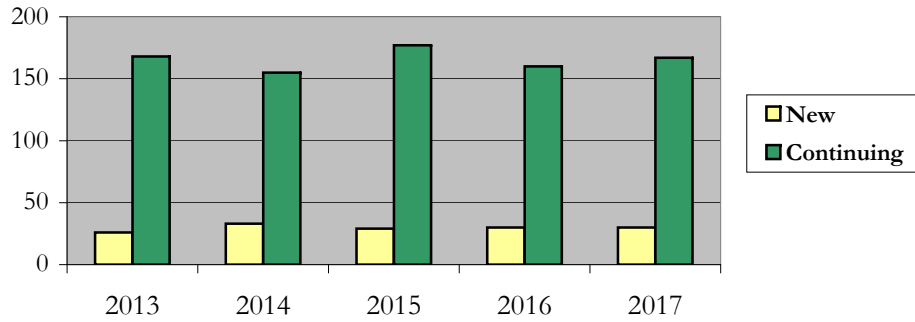
Enrollment

by Student Type, Enrollment Time, and Gender (Doctorate Students)

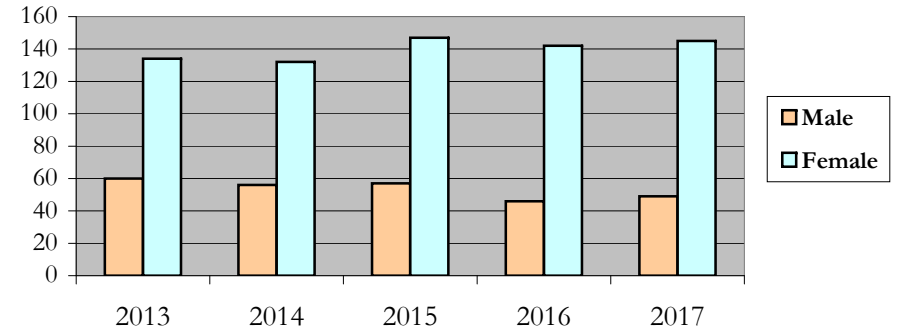
School of Public Health

Fall 2013 - Fall 2017

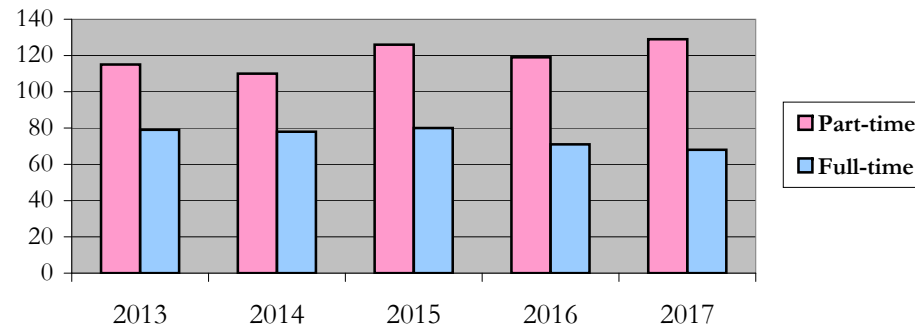
New and Continuing Enrollment



Enrollment by Gender



Enrollment by Student Enrollment Time



Degrees Conferred by Race/Ethnicity

School of Public Health

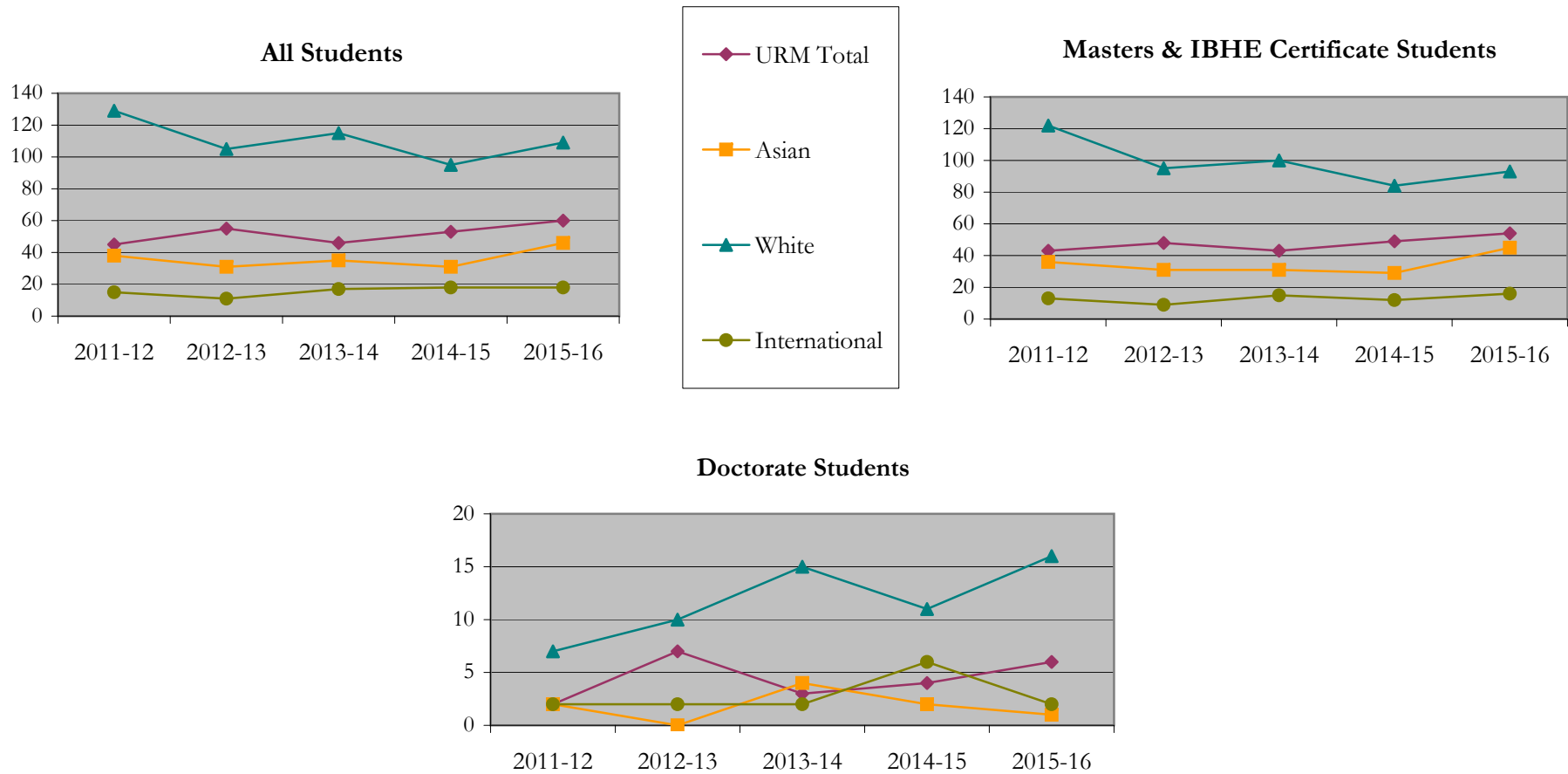
Fall 2013 - Fall 2017

		Total	Under Represented Minorities (URM)								Asian	Native Hawaiian or Pacific Islander	White	Two or More Races	International	Not Reported					
			American Indian or Alaska Native		Black or African American		Hispanic / Latino		URM Total												
			Count	%	Count	%	Count	%	Count	%							Count	%	Count	%	Count
All	2012 - 13	243	1	0.4	26	10.7	18	7.4	45	18.5	38	15.6	0	0.0	129	53.1	9	3.7	15	6.2	7
	2013 - 14	208	0	0.0	35	16.8	20	9.6	55	26.4	31	14.9	1	0.5	105	50.5	3	1.4	11	5.3	2
	2014 - 15	231	0	0.0	25	10.8	21	9.1	46	19.9	35	15.2	0	0.0	115	49.8	10	4.3	17	7.4	8
	2015 - 16	214	0	0.0	29	13.6	24	11.2	53	24.8	31	14.5	2	0.9	95	44.4	9	4.2	18	8.4	6
	2016 - 17	246	0	0.0	37	15.0	23	9.3	60	24.4	46	18.7	0	0.0	109	44.3	5	2.0	18	7.3	8
Masters & IBHE Certificate	2012 - 13	229	1	0.4	26	11.4	16	7.0	43	18.8	36	15.7	0	0.0	122	53.3	9	3.9	13	5.7	6
	2013 - 14	188	0	0.0	33	17.6	15	8.0	48	25.5	31	16.5	1	0.5	95	50.5	3	1.6	9	4.8	1
	2014 - 15	207	0	0.0	25	12.1	18	8.7	43	20.8	31	15.0	0	0.0	100	48.3	10	4.8	15	7.2	8
	2015 - 16	189	0	0.0	28	14.8	21	11.1	49	25.9	29	15.3	2	1.1	84	44.4	8	4.2	12	6.3	5
	2016 - 17	220	0	0.0	34	15.5	20	9.1	54	24.5	45	20.5	0	0.0	93	42.3	4	1.8	16	7.3	8
Doctorate	2012 - 13	14	0	0.0	0	0.0	2	14.3	2	14.3	2	14.3	0	0.0	7	50.0	0	0.0	2	14.3	1
	2013 - 14	20	0	0.0	2	10.0	5	25.0	7	35.0	0	0.0	0	0.0	10	50.0	0	0.0	2	10.0	1
	2014 - 15	24	0	0.0	0	0.0	3	12.5	3	12.5	4	16.7	0	0.0	15	62.5	0	0.0	2	8.3	0
	2015 - 16	25	0	0.0	1	4.0	3	12.0	4	16.0	2	8.0	0	0.0	11	44.0	1	4.0	6	24.0	1
	2016 - 17	26	0	0.0	3	11.5	3	11.5	6	23.1	1	3.8	0	0.0	16	61.5	1	3.8	2	7.7	0
Non-Degree & Campus Certificate	2012 - 13	0	0	0.0	0	0.0	0	0.0	0	0.0	0	0.0	0	0.0	0	0.0	0	0.0	0	0.0	0
	2013 - 14	0	0	0.0	0	0.0	0	0.0	0	0.0	0	0.0	0	0.0	0	0.0	0	0.0	0	0.0	0
	2014 - 15	0	0	0.0	0	0.0	0	0.0	0	0.0	0	0.0	0	0.0	0	0.0	0	0.0	0	0.0	0
	2015 - 16	0	0	0.0	0	0.0	0	0.0	0	0.0	0	0.0	0	0.0	0	0.0	0	0.0	0	0.0	0
	2016 - 17	0	0	0.0	0	0.0	0	0.0	0	0.0	0	0.0	0	0.0	0	0.0	0	0.0	0	0.0	0

Note: Each row represents a fiscal year, beginning with Summer term and ending with Spring.

Degrees Conferred by Race/Ethnicity

School of Public Health
Fall 2013 - Fall 2017



Notes: 1) URM stands for Under-Represented Minority and includes American Indian or Alaska Native; Black or African-American; Hispanic / Latino race/ethnicity groups
 2) Individual URM groups, Native Hawaiian Pacific Islander, Two or More Races, and Other race/ethnicity categories left off this charts due to relatively low numbers

Degrees Conferred
by Gender

School of Public Health
 Fall 2013 - Fall 2017

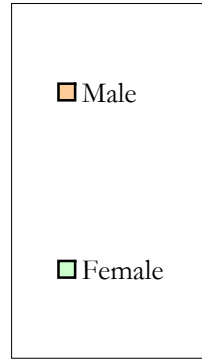
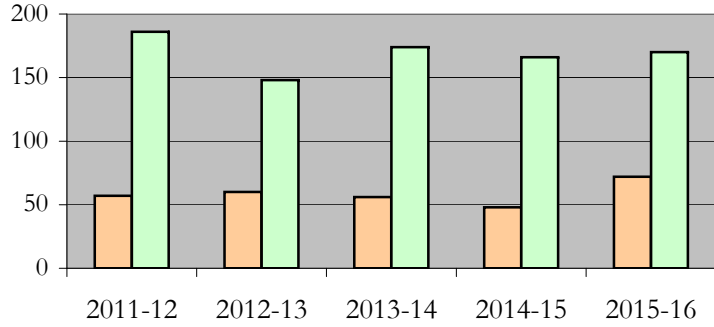
		Total	Male		Female		Not Reported
			Count	%	Count	%	
All	2012 - 13	243	57	23.5	186	76.5	0
	2013 - 14	208	60	28.8	148	71.2	0
	2014 - 15	231	56	24.2	174	75.3	1
	2015 - 16	214	48	22.4	166	77.6	0
	2016 - 17	246	72	29.3	170	69.1	4
Masters & IBHE Certificate	2012 - 13	229	54	23.6	175	76.4	0
	2013 - 14	188	54	28.7	134	71.3	0
	2014 - 15	207	52	25.1	154	74.4	1
	2015 - 16	189	39	20.6	150	79.4	0
	2016 - 17	220	63	28.6	153	69.5	4
Doctorate	2012 - 13	14	3	21.4	11	78.6	0
	2013 - 14	20	6	30.0	14	70.0	0
	2014 - 15	24	4	16.7	20	83.3	0
	2015 - 16	25	9	36.0	16	64.0	0
	2016 - 17	26	9	34.6	17	65.4	0
Campus Certificates	2012 - 13	0	0	0.0	0	0.0	0
	2013 - 14	0	0	0.0	0	0.0	0
	2014 - 15	0	0	0.0	0	0.0	0
	2015 - 16	0	0	0.0	0	0.0	0
	2016 - 17	0	0	0.0	0	0.0	0

Note: Each row represents a fiscal year, beginning with Summer term and ending with Spring.

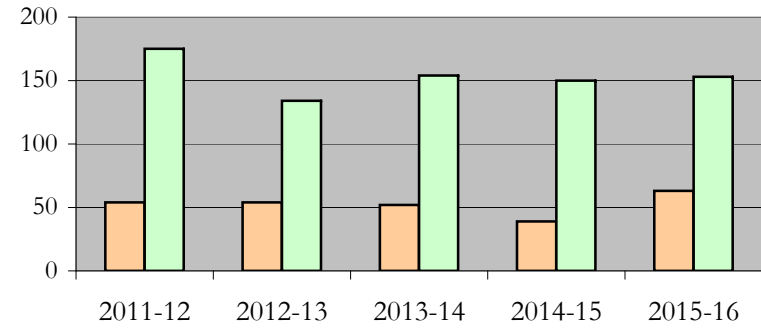
Degrees Conferred by Gender

School of Public Health
Fall 2013 - Fall 2017

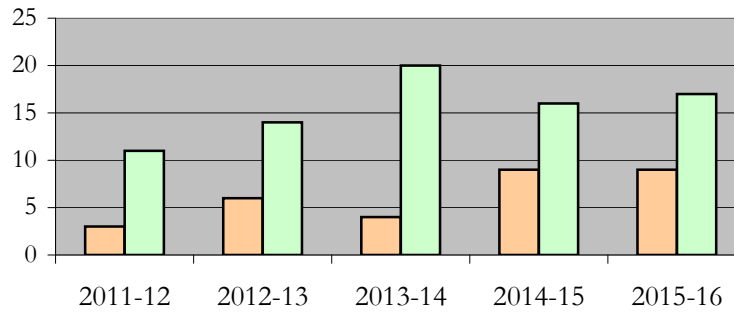
All Students



Masters & IBHE Certificate Students



Doctorate Students



Appendix A

School of Public Health

Fall 2013 - Fall 2017

List of program codes included in this document

20FS1630MS	20FY1635MPHU
20FS1634MS	20FY1636MPH
20FS1634PHD	20FY1637MPH
20FS1635MS	20FY1638MPH
20FS1635PHD	20FY1638MPHU
20FS1636MS	20FY1638NDEU
20FS1636PHD	20FY4021MPHU
20FY1638NDEG	20FY4021NDEU
20FY4075NDEU	20FY4074NDEU
20FS1637MS	20FY4075NDEU
20FS1637PHD	20FY5021NDEU
20FS1638MS	20FY5108NDEU
20FS1638PHD	20FY5109NDEU
20FS4060MHA	20FY5190NDE7
20FS4060NDEG	20FY5190NDEU
20FS5140MS	20FY5212NDEU
20FS5140NDEG	20FY5282NDEU
20FS5189NDEU	20FY5334NDEU
20FS5394MHAU	20FY5447NDEU
20FS5394NDEU	
20FY1631DRPH	
20FY1631DRPU	
20FY1631NDEU	
20FY1632NDEG	
20FY1634MPH	
20FY1635MPH	

Notes: 1) Program codes are sorted by alphabetical order in column-wise fashion

2) Program codes highlighted in yellow did not have applications, enrollment, nor degrees conferred in the covered period