

# Matriculation

## Diversity Pipeline

Health\_Policy\_and\_Administration\_Chicago\_MPH [20FY1638MPH]

Fall 2013 through Fall 2017

Fall Semester Year	Applied					Admitted					Non-URM Admitted to Applied Yield %	URM Admitted to Applied Yield %	New Enrollment					Non-URM Enrolled to Admitted Yield %	URM Enrolled to Admitted Yield %	Total Enrollment				
	Grand Total	Non-URM Total		URM Total		Grand Total	Non-URM Total		URM Total				Grand Total	Non-URM Total		URM Total				Grand Total	Non-URM Total		URM Total	
		Count	%	Count	%		Count	%	Count	%				Count	%	Count	%				Count	%	Count	%
	Count	%	Count	%	Count	%	Count	%	Count	%			Count	%	Count	%	Count			%	Count	%		
2013	148	114	77.0%	34	23.0%	111	86	77.5%	25	22.5%	75.4%	73.5%	22	13	59.1%	9	40.9%	15.1%	36.0%	72	41	56.9%	31	43.1%
2014	142	114	80.3%	28	19.7%	118	97	82.2%	21	17.8%	85.1%	75.0%	36	26	72.2%	10	27.8%	26.8%	47.6%	72	44	61.1%	28	38.9%
2015	121	99	81.8%	22	18.2%	72	60	83.3%	12	16.7%	60.6%	54.5%	21	14	66.7%	7	33.3%	23.3%	58.3%	71	48	67.6%	23	32.4%
2016	124	97	78.2%	27	21.8%	81	64	79.0%	17	21.0%	66.0%	63.0%	19	13	68.4%	6	31.6%	20.3%	35.3%	52	37	71.2%	15	28.8%
2017	122	93	76.2%	29	23.8%	90	67	74.4%	23	25.6%	72.0%	79.3%	30	22	73.3%	8	26.7%	32.8%	34.8%	66	50	75.8%	16	24.2%
<b>Average</b>	<b>131</b>	<b>103</b>	<b>78.7%</b>	<b>28</b>	<b>21.3%</b>	<b>94</b>	<b>75</b>	<b>79.2%</b>	<b>20</b>	<b>20.8%</b>	<b>72.3%</b>	<b>70.0%</b>	<b>26</b>	<b>18</b>	<b>68.8%</b>	<b>8</b>	<b>31.3%</b>	<b>23.5%</b>	<b>40.8%</b>	<b>67</b>	<b>44</b>	<b>66.1%</b>	<b>22.6</b>	<b>33.9%</b>

**Note:** URM stands for Under-Represented Minority and includes American Indian or Alaska Native; Black or African-American; Hispanic / Latino race/ethnicity groups

# Applications, Admission, & New Enrollment Yields by Race/Ethnicity & Gender

Health\_Policy\_and\_Administration\_Chicago\_MPH [20FY1638MPH]  
Fall 2013 through Fall 2017

	Fall Semester Year	Total	Under Represented Minorities (URM)										Race/Eth Not Reported	Male	Female												
			American Indian or Alaska Native		Black or African American		Hispanic / Latino		URM Total		Asian					Native Hawaiian or Pacific Islander		White		Two or More Races		International					
		Count	% Yield	Count	% Yield	Count	% Yield	Count	% Yield	Count	% Yield	Count	% Yield	Count	% Yield	Count	% Yield	Count	% Yield	Count	% Yield	Count	% Yield	Count	% Yield		
Applied	2013	148		0		25		9		34		29		0		55		0		18		12		37		107	
	2014	142		0		17		11		28		29		0		59		3		16		7		30		106	
	2015	121		0		16		6		22		28		0		43		5		17		6		26		92	
	2016	124		0		18		9		27		26		0		46		4		16		5		24		94	
	2017	122		0		15		14		29		20		0		47		6		13		7		37		84	
Admitted	2013	111	75.0	0	0.0	17	68.0	8	88.9	25	73.5	22	75.9	0	0.0	47	85.5	0	0.0	5	27.8	12		27	73.0	80	74.8
	2014	118	83.1	0	0.0	12	70.6	9	81.8	21	75.0	27	93.1	0	0.0	55	93.2	3	100.0	6	37.5	6		21	70.0	93	87.7
	2015	72	59.5	0	0.0	7	43.8	5	83.3	12	54.5	18	64.3	0	0.0	29	67.4	4	80.0	5	29.4	4		11	42.3	58	63.0
	2016	81	65.3	0	0.0	11	61.1	6	66.7	17	63.0	19	73.1	0	0.0	35	76.1	2	50.0	5	31.3	3		14	58.3	62	66.0
	2017	90	73.8	0	0.0	12	80.0	11	78.6	23	79.3	15	75.0	0	0.0	37	78.7	6	100.0	5	38.5	4		30	81.1	59	70.2
Enrolled	2013	22	19.8	0	0.0	7	41.2	2	25.0	9	36.0	4	18.2	0	0.0	9	19.1	0	0.0	0	0.0	0		10	37.0	12	15.0
	2014	36	30.5	0	0.0	8	66.7	2	22.2	10	47.6	9	33.3	0	0.0	14	25.5	2	66.7	1	16.7	0		9	42.9	27	29.0
	2015	21	29.2	0	0.0	4	57.1	3	60.0	7	58.3	5	27.8	0	0.0	8	27.6	1	25.0	0	0.0	0		2	18.2	19	32.8
	2016	19	23.5	0	0.0	4	36.4	2	33.3	6	35.3	7	36.8	0	0.0	6	17.1	0	0.0	0	0.0	0		6	42.9	13	21.0
	2017	30	33.3	0	0.0	2	16.7	6	54.5	8	34.8	1	6.7	0	0.0	16	43.2	3	50.0	1	20.0	1		8	26.7	22	37.3

**Notes:**

- 1) URM stands for Under-Represented Minority and includes American Indian or Alaska Native; Black or African-American; Hispanic / Latino race/ethnicity groups
- 2) Unreported Gender identification is not shown; Male and Female total may not match Total
- 3) In rare situations, the "% Yield" columns may be greater than 100. There are three potential reasons for this:
  - a) Students that received Graduate College approved transfers may not have an admission record for the program that they enrolled into.
  - b) Students with a secondary curriculum enrollment may not have an admission record for that secondary program.
  - c) Students who were newly enrolled in the summer term prior to the fall were added to the fall new enrollment totals.

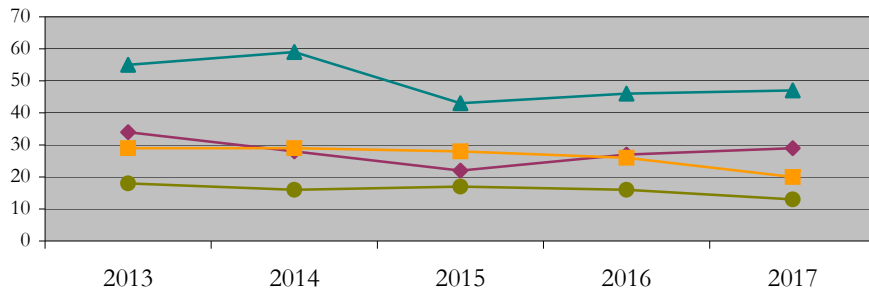
# Applications, Admission, & New Enrollment Yields, cont. by Race/Ethnicity & Gender

Health\_Policy\_and\_Administration\_Chicago\_MPH [20FY1638MPH]  
Fall 2013 through Fall 2017

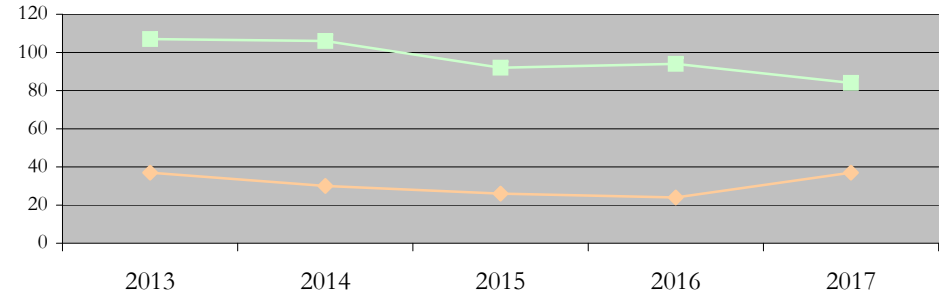
URM Total Asian White International

Male Female

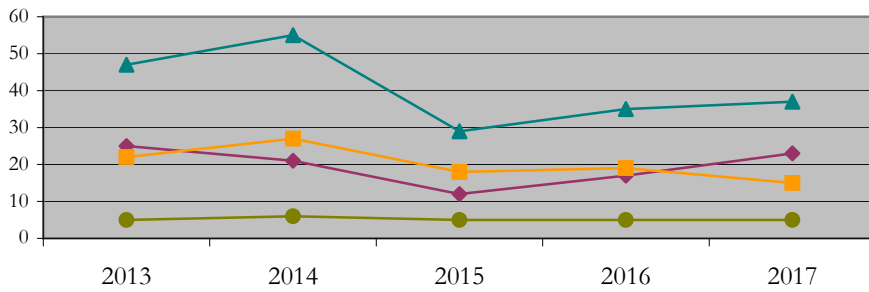
Applications by Race/Ethnicity



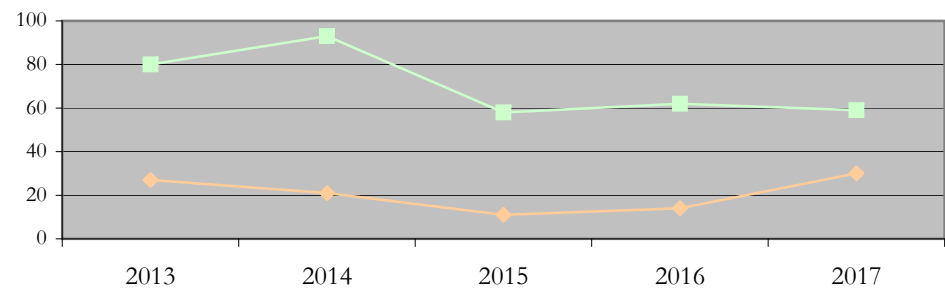
Applications by Gender



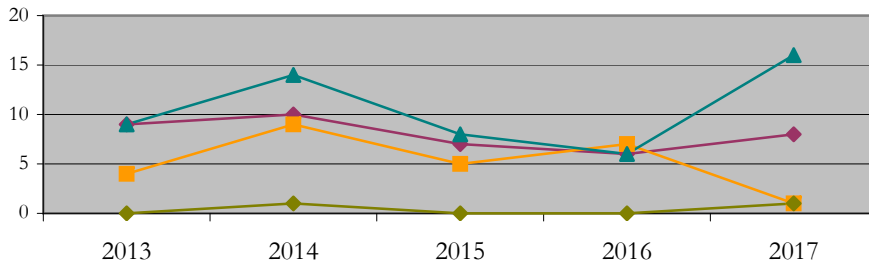
Admissions by Race/Ethnicity



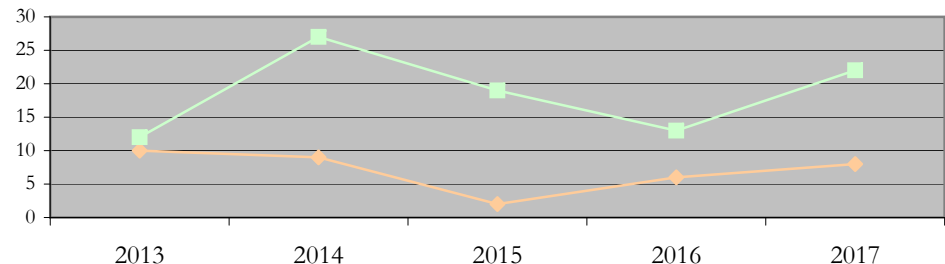
Admissions by Gender



New Enrollments by Race/Ethnicity



New Enrollments by Gender



**Notes:** 1) URM stands for Under-Represented Minority and includes American Indian or Alaska Native; Black or African-American; Hispanic / Latino race/ethnicity groups  
2) Individual URM groups, Native Hawaiian Pacific Islander, Two or More Races, and Other race/ethnicity categories left off these charts due to relatively low numbers

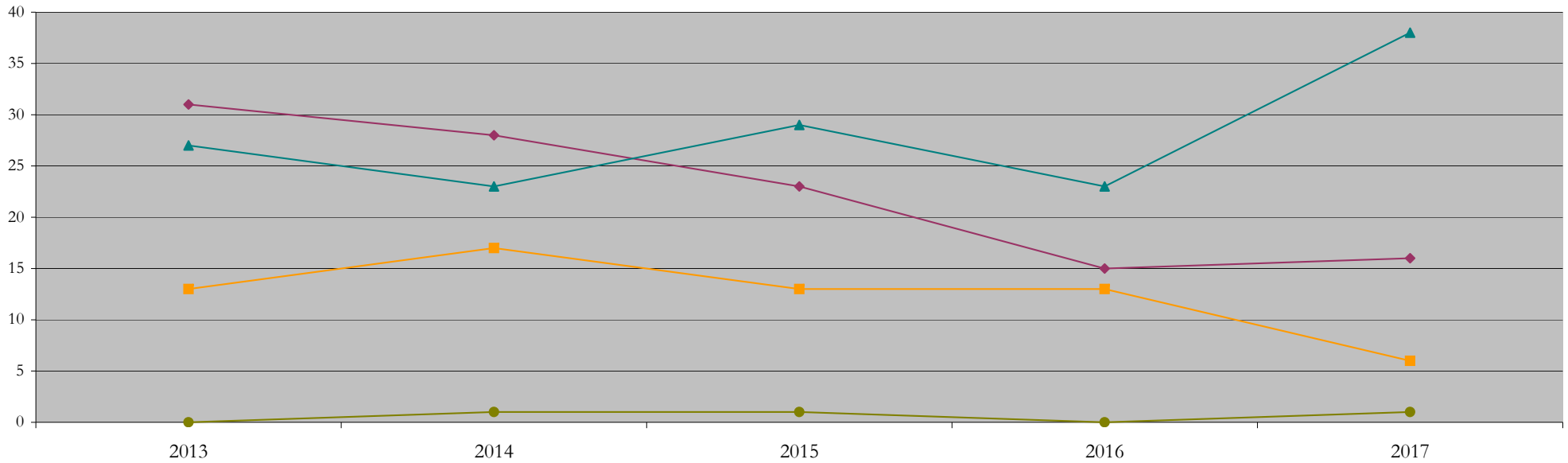
**Total Enrollment (includes secondary curriculum)**

**by Race/Ethnicity**

Health\_Policy\_and\_Administration\_Chicago\_MPH [20FY1638MPH]

Fall 2013 through Fall 2017

Fall Semester Year	Total	Under Represented Minorities (URM)										Asian	Native Hawaiian or Pacific Islander	White	Two or More Races	International	Race/Eth Not Reported			
		American Indian or Alaska Native		Black or African American		Hispanic / Latino		URM Total												
		Count	%	Count	%	Count	%	Count	%											
2013	72	0	0.0	23	31.9	8	11.1	31	43.1	13	18.1	0	0.0	27	37.5	1	1.4	0	0.0	0
2014	72	0	0.0	22	30.6	6	8.3	28	38.9	17	23.6	0	0.0	23	31.9	3	4.2	1	1.4	0
2015	71	0	0.0	16	22.5	7	9.9	23	32.4	13	18.3	0	0.0	29	40.8	4	5.6	1	1.4	1
2016	52	0	0.0	7	13.5	8	15.4	15	28.8	13	25.0	0	0.0	23	44.2	0	0.0	0	0.0	1
2017	66	0	0.0	6	9.1	10	15.2	16	24.2	6	9.1	0	0.0	38	57.6	3	4.5	1	1.5	2



**Notes:** 1) URM stands for Under-Represented Minority and includes American Indian or Alaska Native; Black or African-American; Hispanic / Latino race/ethnicity groups  
 2) Individual URM groups, Native Hawaiian Pacific Islander, Two or More Races, and Other race/ethnicity categories left off this chart due to relatively low numbers

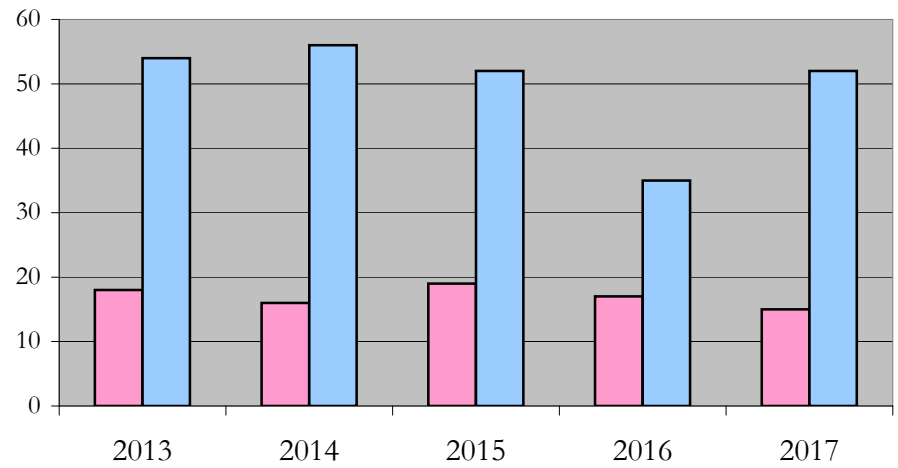
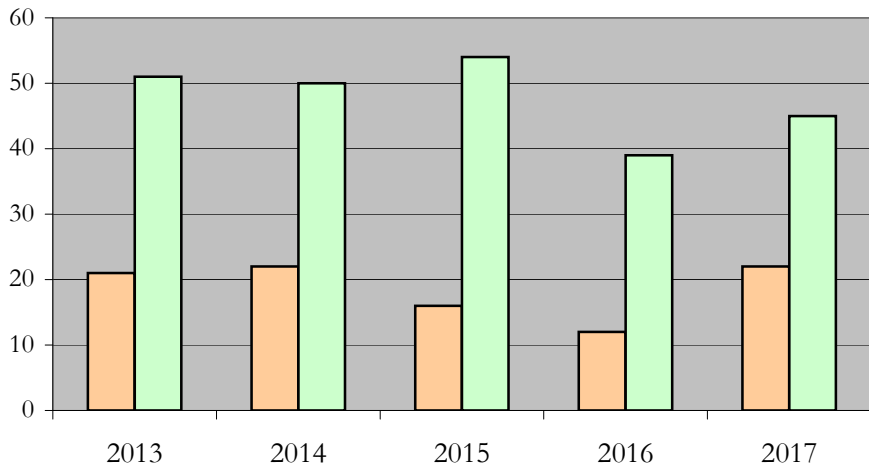
**Total Enrollment (includes secondary curriculum)**

**by Student Type, Gender, and Enrollment Time**

Health\_Policy\_and\_Administration\_Chicago\_MPH [20FY1638MPH]

Fall 2013 through Fall 2017

Fall Semester Year	Total	New		Continuing		Male		Female		Gender Not Reported	Part-time		Full-time	
		Count	%	Count	%	Count	%	Count	%	Count	Count	%	Count	%
2013	72	22	30.6	50	69.4	21	29.2	51	70.8	0	18	25.0	54	75.0
2014	72	36	50.0	36	50.0	22	30.6	50	69.4	0	16	22.2	56	77.8
2015	71	21	29.6	50	70.4	16	22.5	54	76.1	1	19	26.8	52	73.2
2016	52	19	36.5	33	63.5	12	23.1	39	75.0	1	17	32.7	35	67.3
2017	66	30	45.5	36	54.5	22	33.3	45	68.2	-1	15	22.7	52	78.8



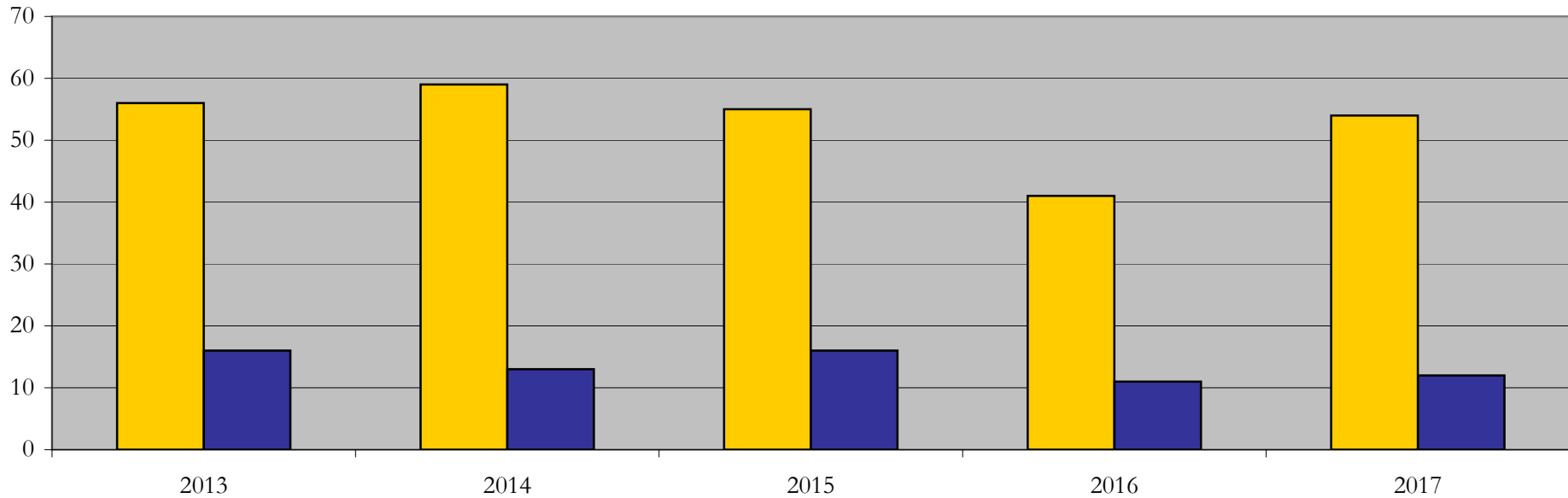
## Enrollment & Degrees Conferred

### by Primary/Secondary, Average Age, State Residency

Health\_Policy\_and\_Administration\_Chicago\_MPH [20FY1638MPH]

Fall 2013 through Fall 2017

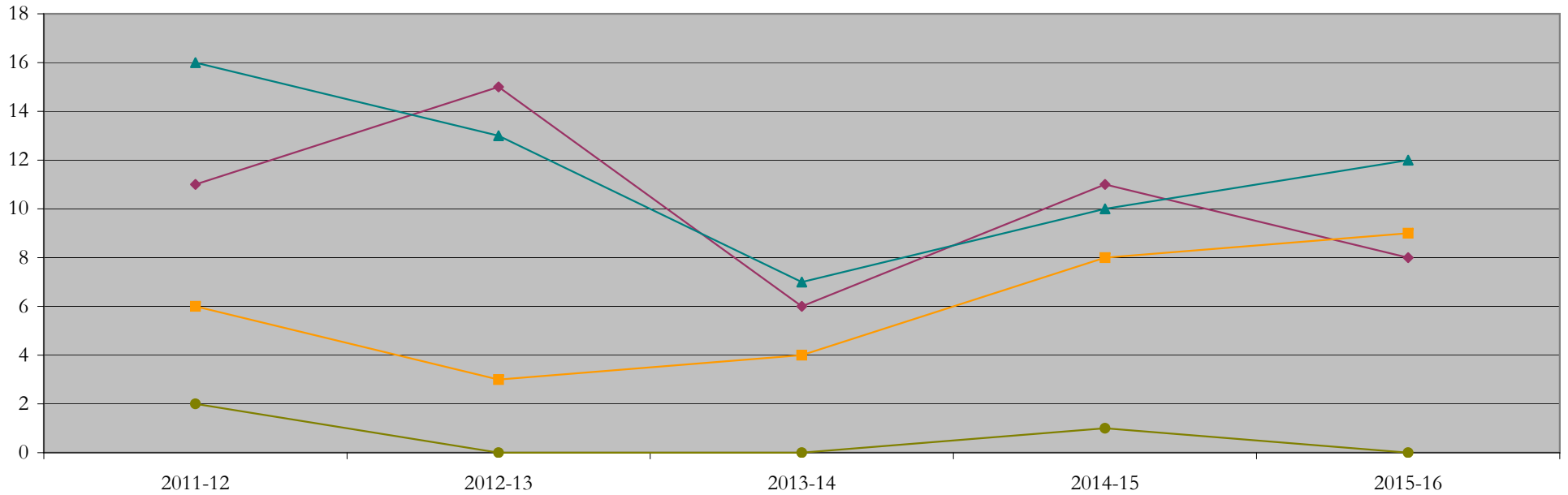
Fall Semester Year	Enrollment			Average Age			State Residency of Total Enrollment					
	Total	Primary	Secondary	Fall New Enrollment	Fall Continuing Enrollment	Academic Year Graduating Class	Residents			Non-Residents		
							Total Enrollment	New Enrollment	Continuing Enrollment	Total Enrollment	New Enrollment	Continuing Enrollment
2013	72	58	14	27	28	26	56	17	39	16	5	11
2014	72	60	12	28	29	26	59	29	30	13	7	6
2015	71	61	10	25	29	26	55	15	40	16	6	10
2016	52	45	7	26	27	30	41	16	25	11	3	8
2017	66	57	9	26	29	27	54	22	32	12	8	4



## Degrees Conferred by Race/Ethnicity

Health\_Policy\_and\_Administration\_Chicago\_MPH [20FY1638MPH]  
AY2011-12 through 2015-16

Academic Year	Total	Under Represented Minorities (URM)								Asian		Native Hawaiian or Pacific		White		Two or More Races		International		Not Reported
		American Indian or Alaska Native		Black or African American		Hispanic / Latino		URM Total		Count	%	Count	%	Count	%	Count	%	Count	%	
		Count	%	Count	%	Count	%	Count	%											
2012 - 2013	36	0	0.0	7	19.4	4	11.1	11	30.6	6	16.7	0	0.0	16	44.4	1	2.8	2	5.6	0
2013 - 2014	31	0	0.0	11	35.5	4	12.9	15	48.4	3	9.7	0	0.0	13	41.9	0	0.0	0	0.0	0
2014 - 2015	17	0	0.0	5	29.4	1	5.9	6	35.3	4	23.5	0	0.0	7	41.2	0	0.0	0	0.0	0
2015 - 2016	32	0	0.0	9	28.1	2	6.3	11	34.4	8	25.0	0	0.0	10	31.3	2	6.3	1	3.1	0
2016 - 2017	29	0	0.0	4	13.8	4	13.8	8	27.6	9	31.0	0	0.0	12	41.4	0	0.0	0	0.0	0



**Notes:** 1) URM stands for Under-Represented Minority and includes American Indian or Alaska Native; Black or African-American; Hispanic / Latino race/ethnicity groups  
2) Individual URM groups, Native Hawaiian Pacific Islander, Two or More Races, and Other race/ethnicity categories left off this chart due to relatively low numbers

## Degrees Conferred

### by Gender

Health\_Policy\_and\_Administration\_Chicago\_MPH [20FY1638MPH]

AY2011-12 through 2015-16

Academic Year	Total	Male		Female		Not Reported
		Count	%	Count	%	
2012 - 2013	36	11	30.6	25	69.4	0
2013 - 2014	31	4	12.9	27	87.1	0
2014 - 2015	17	4	23.5	13	76.5	0
2015 - 2016	32	7	21.9	25	78.1	0
2016 - 2017	28	7	25.0	21	75.0	0

