

# Matriculation

## Diversity Pipeline

Health\_Care\_Administration\_MHA [20FS4060MHA]

Fall 2014 - Fall 2018

Fall Semester Year	Applied					Admitted					Non-URM Admitted to Applied Yield %	URM Admitted to Applied Yield %	New Enrollment					Non-URM Enrolled to Admitted Yield %	URM Enrolled to Admitted Yield %	Total Enrollment				
	Grand Total	Non-URM Total		URM Total		Grand Total	Non-URM Total		URM Total				Grand Total	Non-URM Total		URM Total				Grand Total	Non-URM Total		URM Total	
		Count	%	Count	%		Count	%	Count	%				Count	%	Count	%				Count	%	Count	%
	Count	%	Count	%	Count	%	Count	%	Count	%			Count	%	Count	%	Count			%	Count	%		
2014	127	112	88.2%	15	11.8%	86	79	91.9%	7	8.1%	70.5%	46.7%	25	20	80.0%	5	20.0%	25.3%	71.4%	71	53	74.6%	18	25.4%
2015	135	112	83.0%	23	17.0%	88	73	83.0%	15	17.0%	65.2%	65.2%	32	25	78.1%	7	21.9%	34.2%	46.7%	67	53	79.1%	14	20.9%
2016	142	122	85.9%	20	14.1%	88	74	84.1%	14	15.9%	60.7%	70.0%	29	22	75.9%	7	24.1%	29.7%	50.0%	71	56	78.9%	15	21.1%
2017	125	103	82.4%	22	17.6%	77	62	80.5%	15	19.5%	60.2%	68.2%	26	19	73.1%	7	26.9%	30.6%	46.7%	66	50	75.8%	16	24.2%
2018	103	85	82.5%	18	17.5%	58	47	81.0%	11	19.0%	55.3%	61.1%	20	12	60.0%	8	40.0%	25.5%	72.7%	52	36	69.2%	16	30.8%
<b>Average</b>	<b>126</b>	<b>107</b>	<b>84.5%</b>	<b>20</b>	<b>15.5%</b>	<b>79</b>	<b>67</b>	<b>84.4%</b>	<b>12</b>	<b>15.6%</b>	<b>62.7%</b>	<b>63.3%</b>	<b>26</b>	<b>20</b>	<b>74.2%</b>	<b>7</b>	<b>25.8%</b>	<b>29.3%</b>	<b>54.8%</b>	<b>65</b>	<b>50</b>	<b>75.8%</b>	<b>15.8</b>	<b>24.2%</b>

**Note:** URM stands for Under-Represented Minority and includes American Indian or Alaska Native; Black or African-American; Hispanic / Latino race/ethnicity groups

# Applications, Admission, & New Enrollment Yields

## by Race/Ethnicity & Gender

Health\_Care\_Administration\_MHA [20FS4060MHA]

Fall 2014 - Fall 2018

	Fall Semester Year	Total	Under Represented Minorities (URM)										Race/Eth Not Reported	Male	Female											
			American Indian or Alaska Native		Black or African American		Hispanic / Latino		URM Total		Asian					Native Hawaiian or Pacific Islander		White		Two or More Races		International				
			Count	% Yield	Count	% Yield	Count	% Yield	Count	% Yield	Count	% Yield	Count	% Yield	Count	% Yield	Count	% Yield	Count	% Yield	Count	% Yield	Count	% Yield	Count	% Yield
Applied	2014	127	0		8		7		15		42		0		50		3		13		4		53		72	
	2015	135	0		10		13		23		41		0		56		2		8		5		46		86	
	2016	142	0		13		7		20		33		0		46		5		32		6		45		92	
	2017	125	2		9		11		22		40		0		39		2		20		2		34		85	
	2018	103	0		10		8		18		20		0		16		1		17		31		29		74	
Admitted	2014	86	67.7	0	0.0	1	12.5	6	85.7	7	46.7	29	69.0	0	0.0	40	80.0	3	100.0	5	38.5	2	40	75.5	45	62.5
	2015	88	65.2	0	0.0	6	60.0	9	69.2	15	65.2	23	56.1	0	0.0	45	80.4	0	0.0	1	12.5	4	29	63.0	56	65.1
	2016	88	62.0	0	0.0	9	69.2	5	71.4	14	70.0	22	66.7	0	0.0	33	71.7	2	40.0	12	37.5	5	24	53.3	61	66.3
	2017	77	61.6	1	50.0	5	55.6	9	81.8	15	68.2	26	65.0	0	0.0	27	69.2	1	50.0	7	35.0	1	14	41.2	59	69.4
	2018	58	56.3	0	0.0	6	60.0	5	62.5	11	61.1	15	75.0	0	0.0	11	68.8	0	0.0	3	17.6	18	18	62.1	40	54.1
Enrolled	2014	25	29.1	0	0.0	1	100.0	4	66.7	5	71.4	8	27.6	0	0.0	11	27.5	0	0.0	1	20.0	0	9	22.5	16	35.6
	2015	32	36.4	0	0.0	2	33.3	5	55.6	7	46.7	9	39.1	0	0.0	14	31.1	0	0.0	0	0.0	2	9	31.0	22	39.3
	2016	29	33.0	0	0.0	5	55.6	2	40.0	7	50.0	6	27.3	0	0.0	12	36.4	1	50.0	2	16.7	1	8	33.3	20	32.8
	2017	26	33.8	1	100.0	0	0.0	6	66.7	7	46.7	6	23.1	0	0.0	8	29.6	1	100.0	3	42.9	1	4	28.6	21	35.6
	2018	20	34.5	0	0.0	6	100.0	2	40.0	8	72.7	6	40.0	0	0.0	4	36.4	0	0.0	2	66.7	0	7	38.9	13	32.5

**Notes:**

- 1) URM stands for Under-Represented Minority and includes American Indian or Alaska Native; Black or African-American; Hispanic / Latino race/ethnicity groups
- 2) Unreported Gender identification is not shown; Male and Female total may not match Total
- 3) In rare situations, the "% Yield" columns may be greater than 100. There are three potential reasons for this:
  - a) Students that received Graduate College approved transfers may not have an admission record for the program that they enrolled into.
  - b) Students with a secondary curriculum enrollment may not have an admission record for that secondary program.
  - c) Students who were newly enrolled in the summer term prior to the fall were added to the fall new enrollment totals.

# Applications, Admission, & New Enrollment Yields, cont. by Race/Ethnicity & Gender

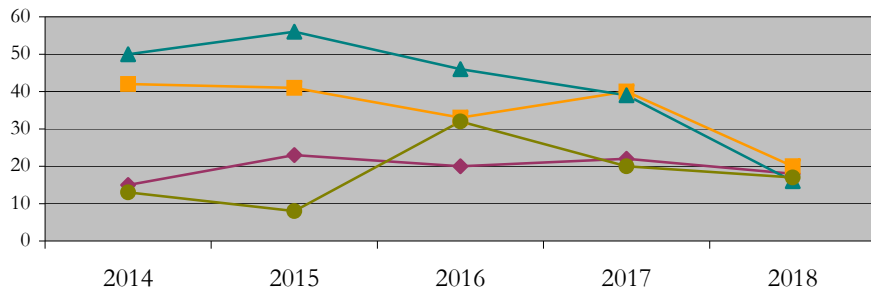
Health\_Care\_Administration\_MHA [20FS4060MHA]

Fall 2014 - Fall 2018

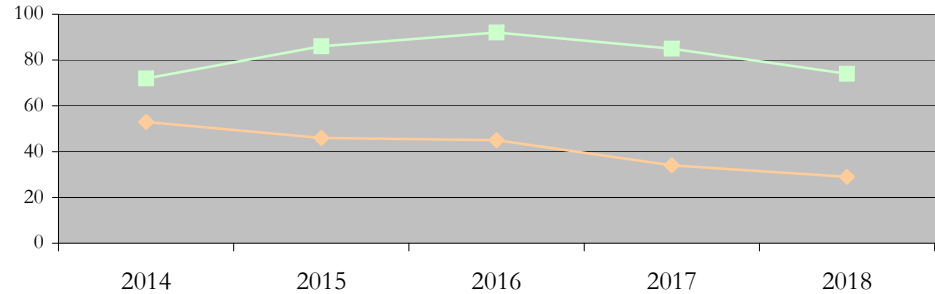
URM Total Asian White International

Male Female

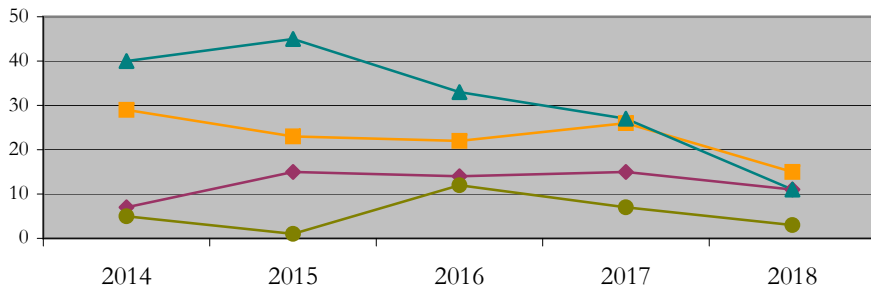
Applications by Race/Ethnicity



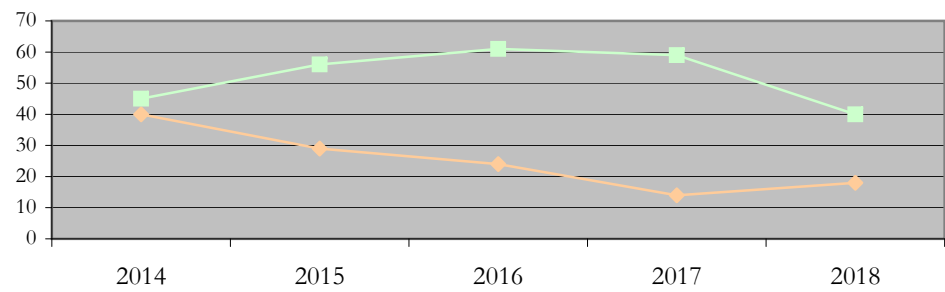
Applications by Gender



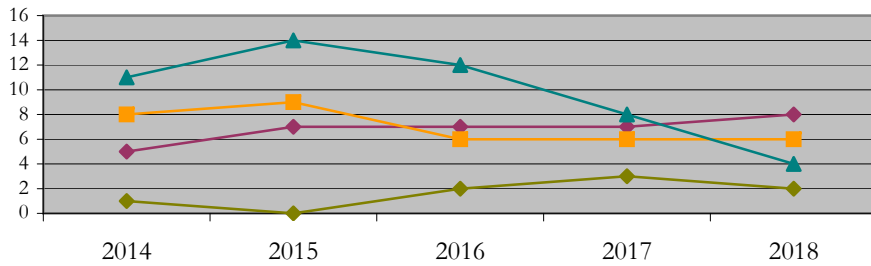
Admissions by Race/Ethnicity



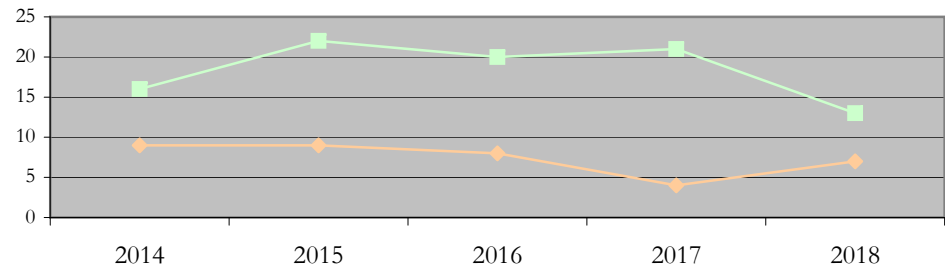
Admissions by Gender



New Enrollments by Race/Ethnicity



New Enrollments by Gender



**Notes:** 1) URM stands for Under-Represented Minority and includes American Indian or Alaska Native; Black or African-American; Hispanic / Latino race/ethnicity groups  
2) Individual URM groups, Native Hawaiian Pacific Islander, Two or More Races, and Other race/ethnicity categories left off these charts due to relatively low numbers

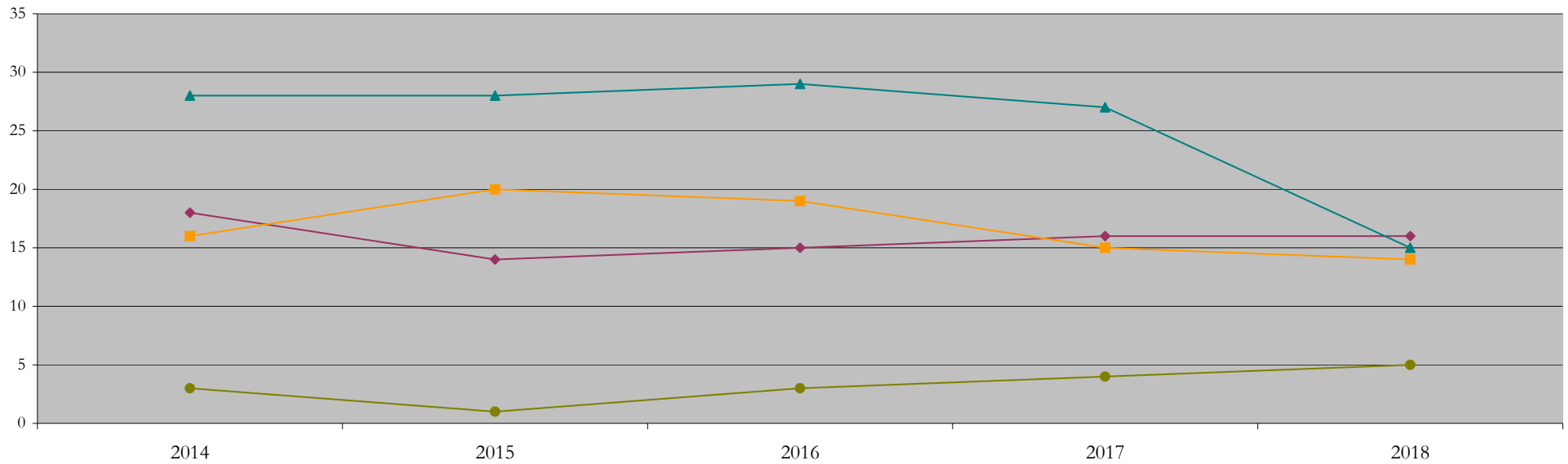
## Total Enrollment (includes secondary curriculum)

### by Race/Ethnicity

Health\_Care\_Administration\_MHA [20FS4060MHA]

Fall 2014 - Fall 2018

Fall Semester Year	Total	Under Represented Minorities (URM)																		
		American Indian or Alaska Native		Black or African American		Hispanic / Latino		URM Total		Asian		Native Hawaiian or Pacific Islander		White		Two or More Races		International		Race/Eth Not Reported
		Count	%	Count	%	Count	%	Count	%	Count	%	Count	%	Count	%	Count	%	Count	%	Count
2014	71	0	0.0	7	9.9	11	15.5	18	25.4	16	22.5	1	1.4	28	39.4	4	5.6	3	4.2	1
2015	67	0	0.0	5	7.5	9	13.4	14	20.9	20	29.9	1	1.5	28	41.8	1	1.5	1	1.5	2
2016	71	0	0.0	7	9.9	8	11.3	15	21.1	19	26.8	0	0.0	29	40.8	2	2.8	3	4.2	3
2017	66	0	0.0	5	7.6	11	16.7	16	24.2	15	22.7	0	0.0	27	40.9	2	3.0	4	6.1	2
2018	52	0	0.0	7	13.5	9	17.3	16	30.8	14	26.9	0	0.0	15	28.8	1	1.9	5	9.6	1



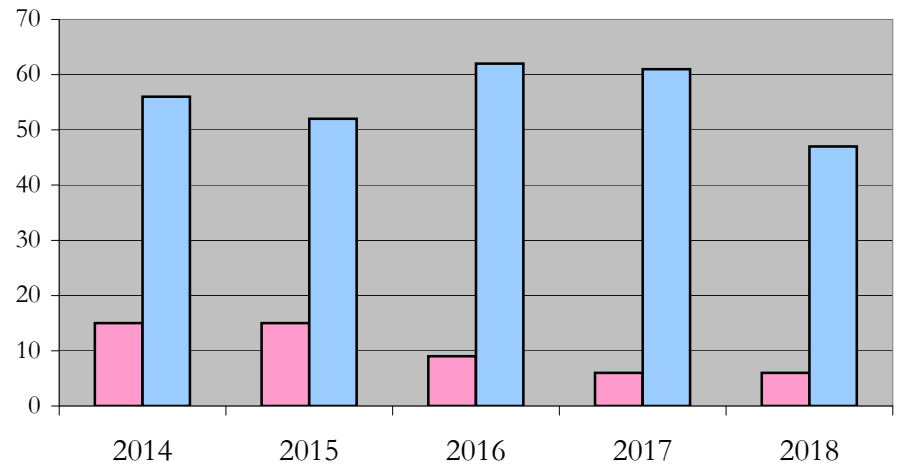
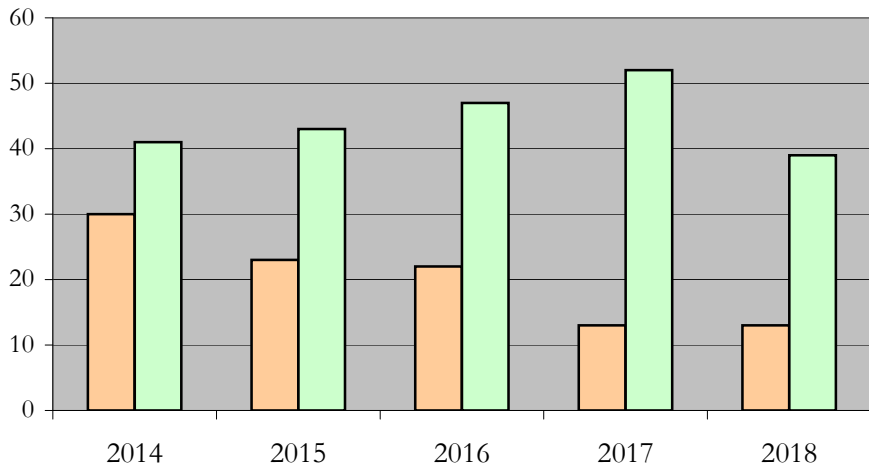
**Notes:** 1) URM stands for Under-Represented Minority and includes American Indian or Alaska Native; Black or African-American; Hispanic / Latino race/ethnicity groups  
 2) Individual URM groups, Native Hawaiian Pacific Islander, Two or More Races, and Other race/ethnicity categories left off this chart due to relatively low numbers

**Total Enrollment (includes secondary curriculum)  
by Student Type, Gender, and Enrollment Time**

Health\_Care\_Administration\_MHA [20FS4060MHA]

Fall 2014 - Fall 2018

Fall Semester Year	Total	New		Continuing		Male		Female		Gender Not Reported	Part-time		Full-time	
		Count	%	Count	%	Count	%	Count	%	Count	Count	%	Count	%
2014	71	25	35.2	46	64.8	30	42.3	41	57.7	0	15	21.1	56	78.9
2015	67	32	47.8	35	52.2	23	34.3	43	64.2	1	15	22.4	52	77.6
2016	71	29	40.8	42	59.2	22	31.0	47	66.2	2	9	12.7	62	87.3
2017	66	26	39.4	40	60.6	13	19.7	52	78.8	1	6	9.1	61	92.4
2018	52	20	38.5	32	61.5	13	25.0	39	75.0	0	6	11.5	47	90.4



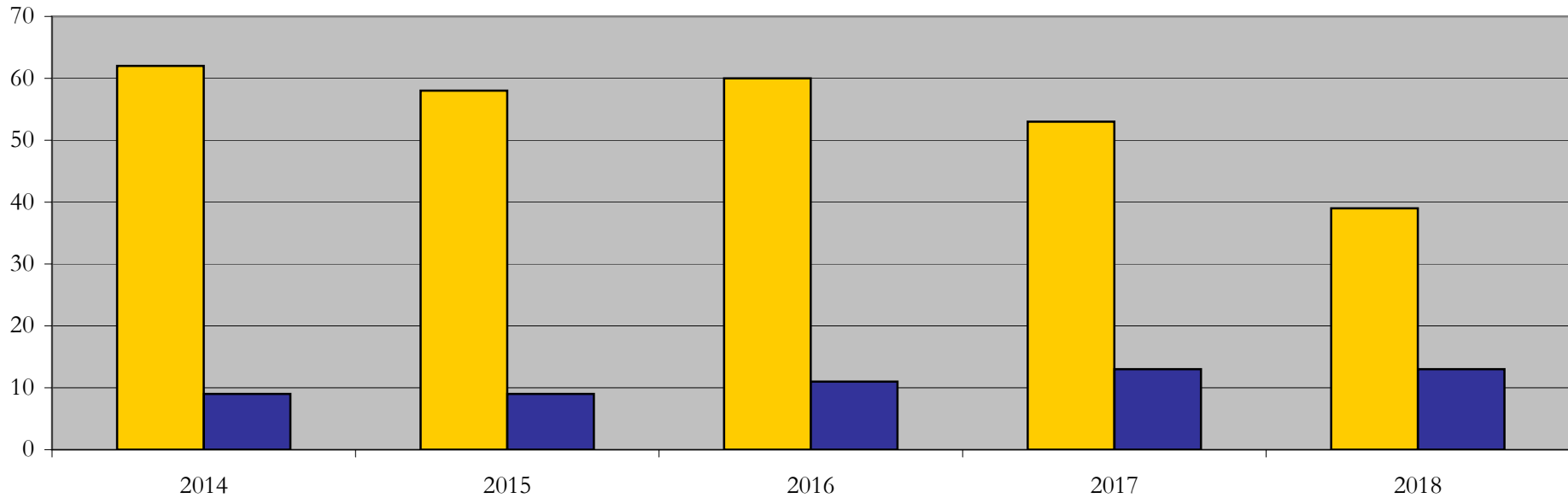
## Enrollment & Degrees Conferred

### by Primary/Secondary, Average Age, State Residency

Health\_Care\_Administration\_MHA [20FS4060MHA]

Fall 2014 - Fall 2018

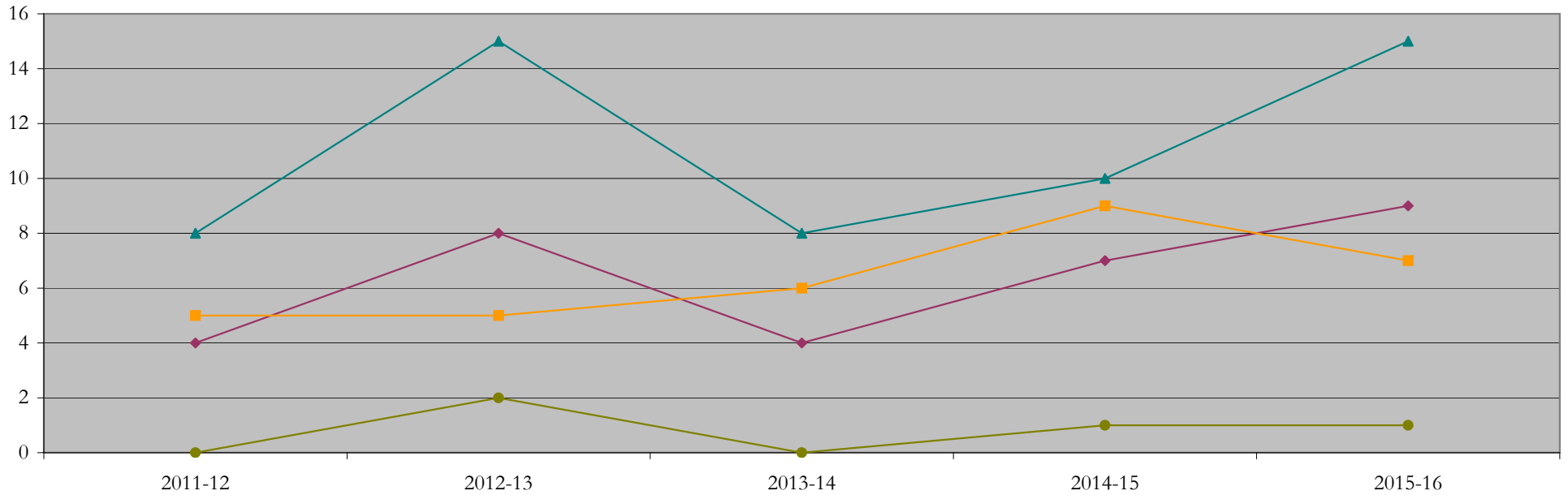
Fall Semester Year	Enrollment			Average Age			State Residency of Total Enrollment					
	Total	Primary	Secondary	Fall New Enrollment	Fall Continuing Enrollment	Academic Year Graduating Class	Residents			Non-Residents		
							Total Enrollment	New Enrollment	Continuing Enrollment	Total Enrollment	New Enrollment	Continuing Enrollment
2014	71	71	0	27	29	27	62	21	41	9	4	5
2015	67	67	0	25	30	25	58	27	31	9	5	4
2016	71	71	0	26	28	28	60	25	35	11	4	7
2017	66	66	0	26	28	26	53	18	35	13	8	5
2018	52	52	0	25	27	26	39	14	25	13	6	7



## Degrees Conferred by Race/Ethnicity

Health\_Care\_Administration\_MHA [20FS4060MHA]  
AY2011-12 through 2015-16

Academic Year	Total	Under Represented Minorities (URM)								Asian		Native Hawaiian or Pacific		White		Two or More Races		International		Not Reported
		American Indian or Alaska Native		Black or African American		Hispanic / Latino		URM Total		Count	%	Count	%	Count	%	Count	%	Count	%	
		Count	%	Count	%	Count	%	Count	%											
2013 - 2014	17	0	0.0	3	17.6	1	5.9	4	23.5	5	29.4	0	0.0	8	47.1	0	0.0	0	0.0	0
2014 - 2015	33	0	0.0	4	12.1	4	12.1	8	24.2	5	15.2	0	0.0	15	45.5	3	9.1	2	6.1	0
2015 - 2016	20	0	0.0	1	5.0	3	15.0	4	20.0	6	30.0	1	5.0	8	40.0	0	0.0	0	0.0	1
2016 - 2017	31	0	0.0	4	12.9	3	9.7	7	22.6	9	29.0	0	0.0	10	32.3	1	3.2	1	3.2	3
2017 - 2018	34	0	0.0	4	11.8	5	14.7	9	26.5	7	20.6	0	0.0	15	44.1	1	2.9	1	2.9	1



**Notes:** 1) URM stands for Under-Represented Minority and includes American Indian or Alaska Native; Black or African-American; Hispanic / Latino race/ethnicity groups  
2) Individual URM groups, Native Hawaiian Pacific Islander, Two or More Races, and Other race/ethnicity categories left off this chart due to relatively low numbers

## Degrees Conferred

### by Gender

Health\_Care\_Administration\_MHA [20FS4060MHA]

AY2011-12 through 2015-16

Academic Year	Total	Male		Female		Not Reported
		Count	%	Count	%	
2013 - 2014	17	7	41.2	10	58.8	0
2014 - 2015	33	16	48.5	17	51.5	0
2015 - 2016	20	8	40.0	12	60.0	0
2016 - 2017	30	12	40.0	18	60.0	0
2017 - 2018	34	7	20.6	27	79.4	0

