

# Matriculation

## Diversity Pipeline

Environmental\_and\_Occupational\_Health\_Sci\_MPH [20FY1636MPH]

Fall 2014 - Fall 2018

Fall Semester Year	Applied					Admitted					Non-URM Admitted to Applied Yield %	URM Admitted to Applied Yield %	New Enrollment					Non-URM Enrolled to Admitted Yield %	URM Enrolled to Admitted Yield %	Total Enrollment				
	Grand Total	Non-URM Total		URM Total		Grand Total	Non-URM Total		URM Total				Grand Total	Non-URM Total		URM Total				Grand Total	Non-URM Total		URM Total	
		Count	%	Count	%		Count	%	Count	%				Count	%	Count	%				Count	%	Count	%
	Count	%	Count	%	Count	%	Count	%	Count	%			Count	%	Count	%	Count			%	Count	%	Count	%
2014	32	20	62.5%	12	37.5%	26	15	57.7%	11	42.3%	75.0%	91.7%	15	7	46.7%	8	53.3%	46.7%	72.7%	33	22	66.7%	11	33.3%
2015	32	26	81.3%	6	18.8%	29	23	79.3%	6	20.7%	88.5%	100.0%	16	10	62.5%	6	37.5%	43.5%	100.0%	36	22	61.1%	14	38.9%
2016	38	27	71.1%	11	28.9%	35	25	71.4%	10	28.6%	92.6%	90.9%	17	10	58.8%	7	41.2%	40.0%	70.0%	37	25	67.6%	12	32.4%
2017	44	37	84.1%	7	15.9%	35	30	85.7%	5	14.3%	81.1%	71.4%	16	12	75.0%	4	25.0%	40.0%	80.0%	40	29	72.5%	11	27.5%
2018	31	21	67.7%	10	32.3%	23	15	65.2%	8	34.8%	71.4%	80.0%	11	5	45.5%	6	54.5%	33.3%	75.0%	35	21	60.0%	14	40.0%
<b>Average</b>	<b>35</b>	<b>26</b>	<b>74.0%</b>	<b>9</b>	<b>26.0%</b>	<b>30</b>	<b>22</b>	<b>73.0%</b>	<b>8</b>	<b>27.0%</b>	<b>82.4%</b>	<b>87.0%</b>	<b>15</b>	<b>9</b>	<b>58.7%</b>	<b>6</b>	<b>41.3%</b>	<b>40.7%</b>	<b>77.5%</b>	<b>36</b>	<b>24</b>	<b>65.7%</b>	<b>12.4</b>	<b>34.3%</b>

**Note:** URM stands for Under-Represented Minority and includes American Indian or Alaska Native; Black or African-American; Hispanic / Latino race/ethnicity groups

# Applications, Admission, & New Enrollment Yields

## by Race/Ethnicity & Gender

Environmental\_and\_Occupational\_Health\_Sci\_MPH [20FY1636MPH]

Fall 2014 - Fall 2018

	Fall Semester Year	Total	Under Represented Minorities (URM)									Asian	Native Hawaiian or Pacific Islander	White	Two or More Races	International	Race/Eth Not Reported	Male	Female								
			American Indian or Alaska Native		Black or African American		Hispanic / Latino		URM Total																		
Applied	2014	32	0	6	6	12	5	0	7	2	6	0	10	2	6	0	10	22									
	2015	32	0	4	2	6	5	0	10	2	8	1	15	2	8	1	15	16									
	2016	38	0	7	4	11	6	0	12	3	6	0	12	3	6	0	12	26									
	2017	44	0	4	3	7	5	0	17	2	12	1	16	2	12	1	16	27									
	2018	31	0	4	6	10	0	0	3	0	8	10	14	0	8	10	14	17									
		Count	% Yield	Count	% Yield	Count	% Yield	Count	% Yield	Count	% Yield	Count	% Yield	Count	% Yield	Count	% Yield	Count	% Yield	Count	% Yield						
Admitted	2014	26	81.3	0	0.0	6	100.0	5	83.3	11	91.7	4	80.0	0	0.0	6	85.7	1	50.0	4	66.7	0	8	80.0	18	81.8	
	2015	29	90.6	0	0.0	4	100.0	2	100.0	6	100.0	4	80.0	0	0.0	8	80.0	2	100.0	8	100.0	1	14	93.3	14	87.5	
	2016	35	92.1	0	0.0	6	85.7	4	100.0	10	90.9	6	100.0	0	0.0	11	91.7	3	100.0	5	83.3	0	11	91.7	24	92.3	
	2017	35	79.5	0	0.0	3	75.0	2	66.7	5	71.4	5	100.0	0	0.0	13	76.5	2	100.0	9	75.0	1	11	68.8	23	85.2	
	2018	23	74.2	0	0.0	3	75.0	5	83.3	8	80.0	0	0.0	0	0.0	3	100.0	0	0.0	5	62.5	7	9	64.3	14	82.4	
		Count	% Yield	Count	% Yield	Count	% Yield	Count	% Yield	Count	% Yield	Count	% Yield	Count	% Yield	Count	% Yield	Count	% Yield	Count	% Yield	Count	% Yield	Count	% Yield	Count	% Yield
Enrolled	2014	15	57.7	0	0.0	5	83.3	3	60.0	8	72.7	2	50.0	0	0.0	2	33.3	1	100.0	2	50.0	0	6	75.0	9	50.0	
	2015	16	55.2	0	0.0	4	100.0	2	100.0	6	100.0	1	25.0	0	0.0	4	50.0	1	50.0	4	50.0	0	12	85.7	4	28.6	
	2016	17	48.6	0	0.0	3	50.0	4	100.0	7	70.0	2	33.3	0	0.0	7	63.6	0	0.0	1	20.0	0	5	45.5	12	50.0	
	2017	16	45.7	0	0.0	2	66.7	2	100.0	4	80.0	4	80.0	0	0.0	6	46.2	1	50.0	1	11.1	0	5	45.5	11	47.8	
	2018	11	47.8	0	0.0	3	100.0	3	60.0	6	75.0	0	0.0	0	0.0	4	133.3	0	0.0	1	20.0	0	6	66.7	5	35.7	

**Notes:**

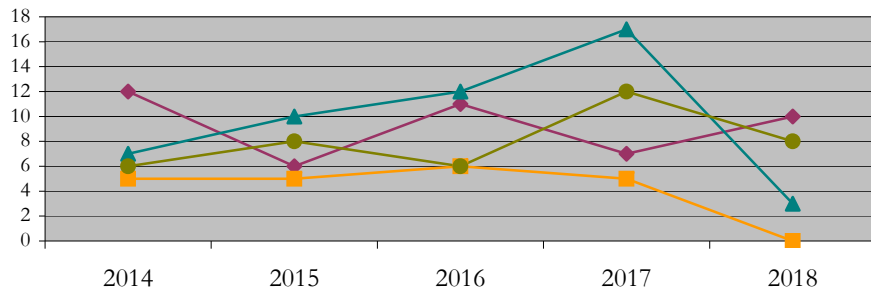
- 1) URM stands for Under-Represented Minority and includes American Indian or Alaska Native; Black or African-American; Hispanic / Latino race/ethnicity groups
- 2) Unreported Gender identification is not shown; Male and Female total may not match Total
- 3) In rare situations, the "% Yield" columns may be greater than 100. There are three potential reasons for this:
  - a) Students that received Graduate College approved transfers may not have an admission record for the program that they enrolled into.
  - b) Students with a secondary curriculum enrollment may not have an admission record for that secondary program.
  - c) Students who were newly enrolled in the summer term prior to the fall were added to the fall new enrollment totals.

# Applications, Admission, & New Enrollment Yields, cont. by Race/Ethnicity & Gender

Environmental\_and\_Occupational\_Health\_Sci\_MPH [20FY1636MPH]  
Fall 2014 - Fall 2018

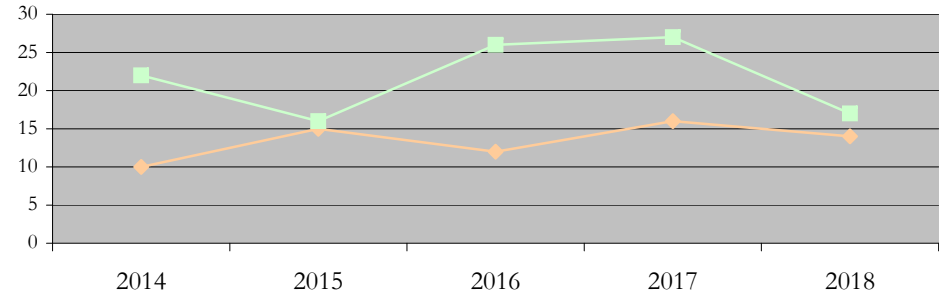
URM Total Asian White International

Applications by Race/Ethnicity

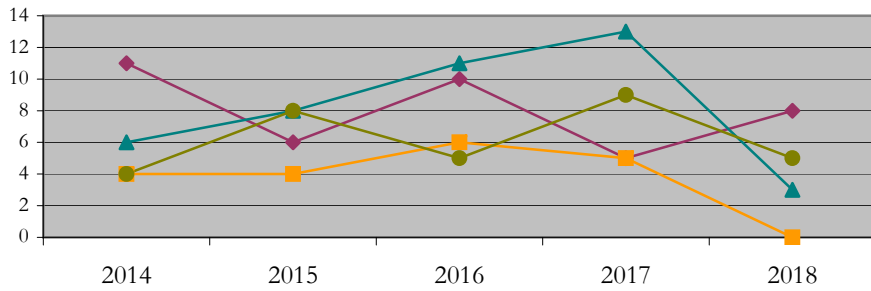


Male Female

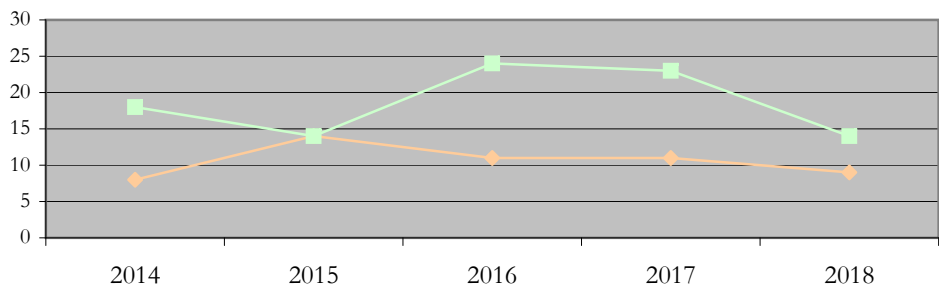
Applications by Gender



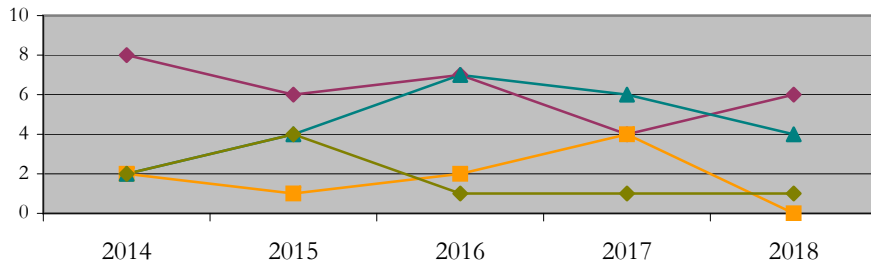
Admissions by Race/Ethnicity



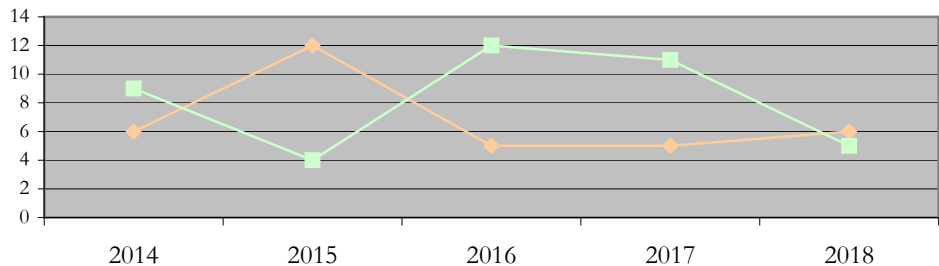
Admissions by Gender



New Enrollments by Race/Ethnicity



New Enrollments by Gender



**Notes:** 1) URM stands for Under-Represented Minority and includes American Indian or Alaska Native; Black or African-American; Hispanic / Latino race/ethnicity groups  
2) Individual URM groups, Native Hawaiian Pacific Islander, Two or More Races, and Other race/ethnicity categories left off these charts due to relatively low numbers

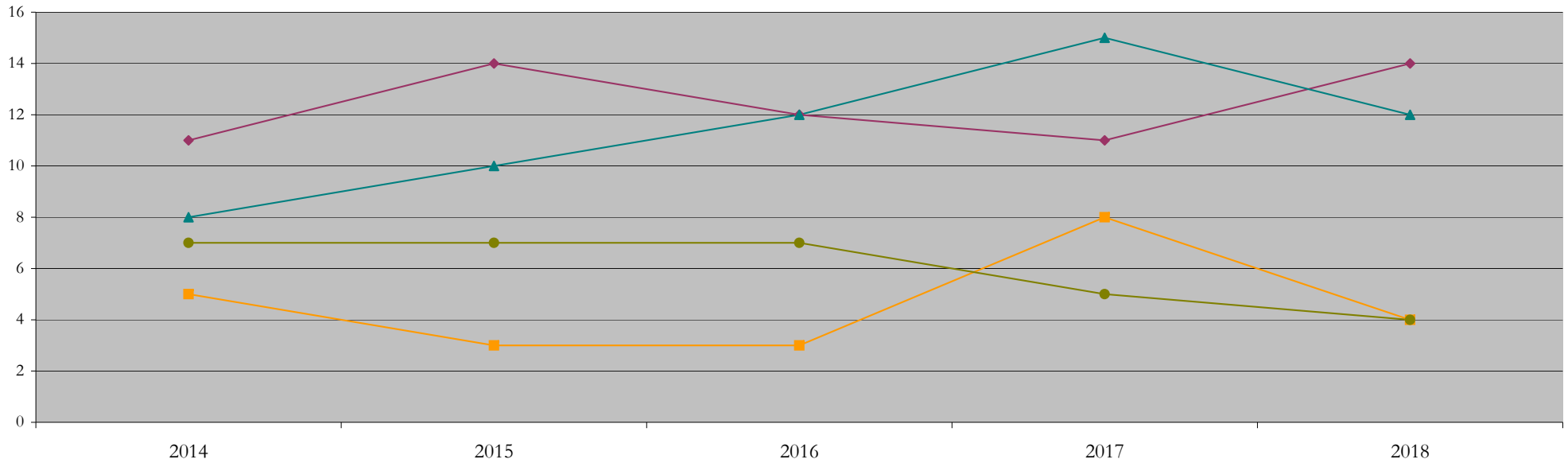
**Total Enrollment (includes secondary curriculum)**

**by Race/Ethnicity**

Environmental\_and\_Occupational\_Health\_Sci\_MPH [20FY1636MPH]

Fall 2014 - Fall 2018

Fall Semester Year	Total	Under Represented Minorities (URM)										Native Hawaiian or Pacific Islander	White		Two or More Races		International		Race/Eth Not Reported	
		American Indian or Alaska Native		Black or African American		Hispanic / Latino		URM Total		Asian			Count	%	Count	%	Count	%	Count	
		Count	%	Count	%	Count	%	Count	%	Count	%		Count	%	Count	%	Count	%	Count	
2014	33	0	0.0	7	21.2	4	12.1	11	33.3	5	15.2	0	0.0	8	24.2	2	6.1	7	21.2	0
2015	36	0	0.0	9	25.0	5	13.9	14	38.9	3	8.3	0	0.0	10	27.8	2	5.6	7	19.4	0
2016	37	0	0.0	5	13.5	7	18.9	12	32.4	3	8.1	0	0.0	12	32.4	1	2.7	7	18.9	2
2017	40	0	0.0	4	10.0	7	17.5	11	27.5	8	20.0	0	0.0	15	37.5	1	2.5	5	12.5	0
2018	35	0	0.0	5	14.3	9	25.7	14	40.0	4	11.4	0	0.0	12	34.3	1	2.9	4	11.4	0



**Notes:** 1) URM stands for Under-Represented Minority and includes American Indian or Alaska Native; Black or African-American; Hispanic / Latino race/ethnicity groups  
 2) Individual URM groups, Native Hawaiian Pacific Islander, Two or More Races, and Other race/ethnicity categories left off this chart due to relatively low numbers

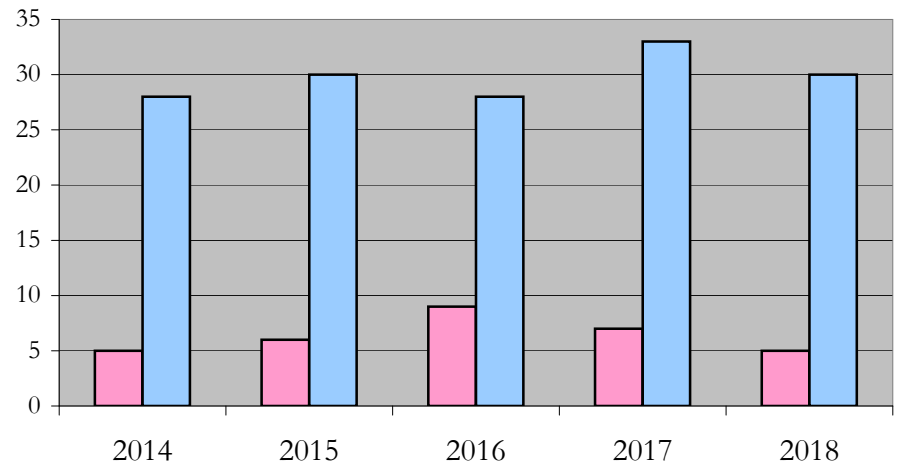
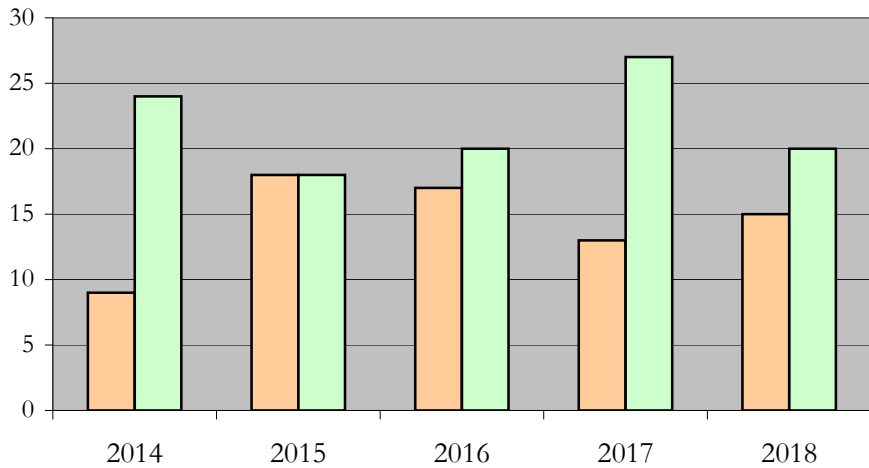
**Total Enrollment (includes secondary curriculum)**

**by Student Type, Gender, and Enrollment Time**

Environmental\_and\_Occupational\_Health\_Sci\_MPH [20FY1636MPH]

Fall 2014 - Fall 2018

Fall Semester Year	Total	New		Continuing		Male		Female		Gender Not Reported	Part-time		Full-time	
		Count	%	Count	%	Count	%	Count	%		Count	%	Count	%
2014	33	15	45.5	18	54.5	9	27.3	24	72.7	0	5	15.2	28	84.8
2015	36	16	44.4	20	55.6	18	50.0	18	50.0	0	6	16.7	30	83.3
2016	37	17	45.9	20	54.1	17	45.9	20	54.1	0	9	24.3	28	75.7
2017	40	16	40.0	24	60.0	13	32.5	27	67.5	0	7	17.5	33	82.5
2018	35	11	31.4	24	68.6	15	42.9	20	57.1	0	5	14.3	30	85.7



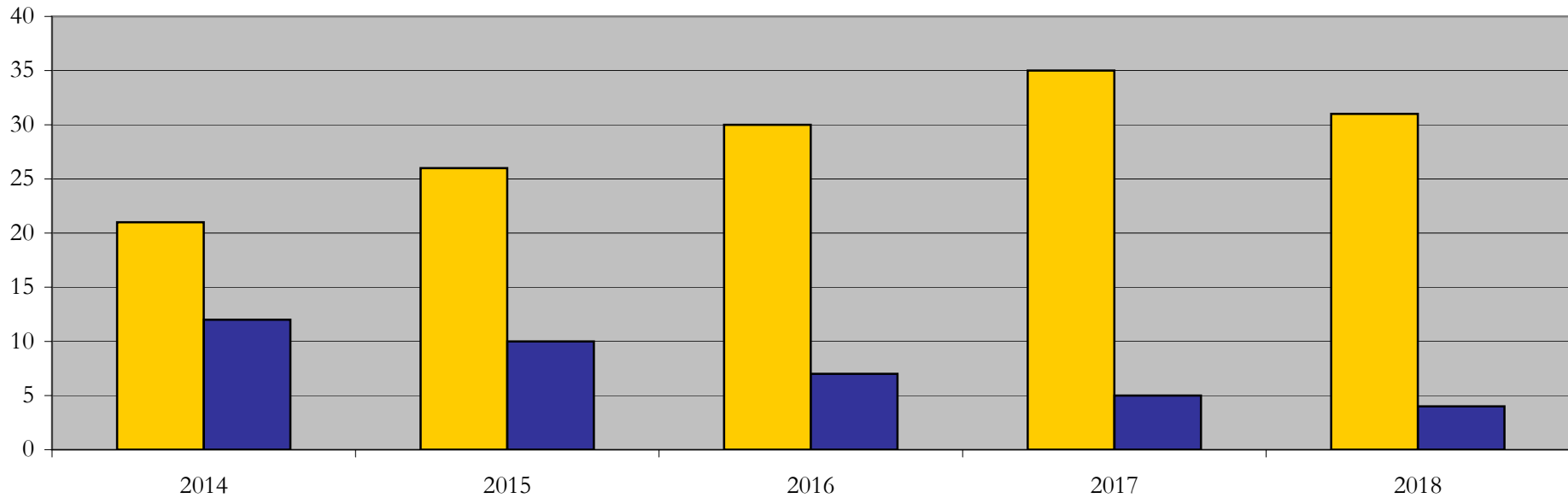
## Enrollment & Degrees Conferred

### by Primary/Secondary, Average Age, State Residency

Environmental\_and\_Occupational\_Health\_Sci\_MPH [20FY1636MPH]

Fall 2014 - Fall 2018

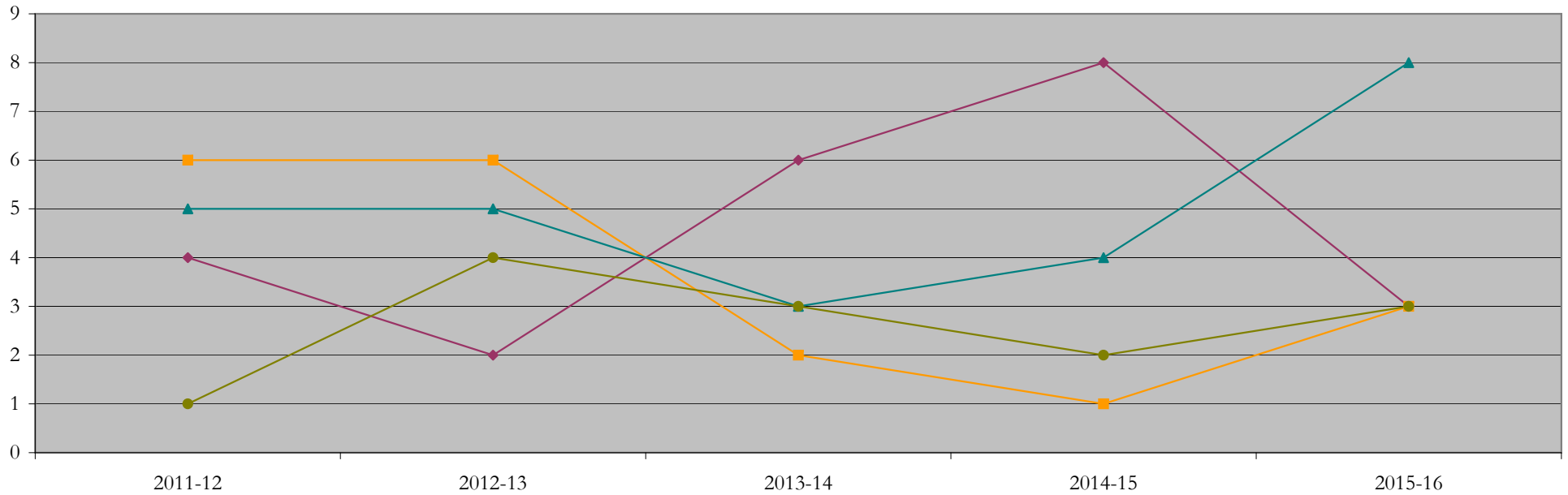
Fall Semester Year	Enrollment			Average Age			State Residency of Total Enrollment					
	Total	Primary	Secondary	Fall New Enrollment	Fall Continuing Enrollment	Academic Year Graduating Class	Residents			Non-Residents		
							Total Enrollment	New Enrollment	Continuing Enrollment	Total Enrollment	New Enrollment	Continuing Enrollment
2014	33	33	0	27	29	31	21	11	10	12	4	8
2015	36	36	0	31	30	26	26	10	16	10	6	4
2016	37	37	0	29	32	29	30	14	16	7	3	4
2017	40	39	1	26	29	30	35	15	20	5	1	4
2018	35	35	0	27	29	29	31	9	22	4	2	2



## Degrees Conferred by Race/Ethnicity

Environmental\_and\_Occupational\_Health\_Sci\_MPH [20FY1636MPH]  
AY2011-12 through 2015-16

Academic Year	Total	Under Represented Minorities (URM)								Asian		Native Hawaiian or Pacific		White		Two or More Races		International		Not Reported
		American Indian or Alaska Native		Black or African American		Hispanic / Latino		URM Total		Count	%	Count	%	Count	%	Count	%	Count	%	
		Count	%	Count	%	Count	%	Count	%											
2013 - 2014	17	0	0.0	3	17.6	1	5.9	4	23.5	6	35.3	1	5.9	5	29.4	0	0.0	1	5.9	0
2014 - 2015	18	0	0.0	2	11.1	0	0.0	2	11.1	6	33.3	0	0.0	5	27.8	1	5.6	4	22.2	0
2015 - 2016	15	0	0.0	2	13.3	4	26.7	6	40.0	2	13.3	0	0.0	3	20.0	0	0.0	3	20.0	1
2016 - 2017	18	0	0.0	5	27.8	3	16.7	8	44.4	1	5.6	0	0.0	4	22.2	0	0.0	2	11.1	3
2017 - 2018	18	0	0.0	2	11.1	1	5.6	3	16.7	3	16.7	0	0.0	8	44.4	1	5.6	3	16.7	0



**Notes:** 1) URM stands for Under-Represented Minority and includes American Indian or Alaska Native; Black or African-American; Hispanic / Latino race/ethnicity groups  
2) Individual URM groups, Native Hawaiian Pacific Islander, Two or More Races, and Other race/ethnicity categories left off this chart due to relatively low numbers

## Degrees Conferred

### by Gender

Environmental\_and\_Occupational\_Health\_Sci\_MPH [20FY1636MPH]

AY2011-12 through 2015-16

Academic Year	Total	Male		Female		Not Reported
		Count	%	Count	%	
2013 - 2014	17	5	29.4	12	70.6	0
2014 - 2015	18	4	22.2	14	77.8	0
2015 - 2016	15	4	26.7	11	73.3	0
2016 - 2017	18	9	50.0	9	50.0	0
2017 - 2018	18	6	33.3	12	66.7	0

