

Matriculation

Diversity Pipeline

Community_Health_Science_MPH [20FY1635MPH]

Fall 2013 through Fall 2017

Fall Semester Year	Applied					Admitted					Non-URM Admitted to Applied Yield %	URM Admitted to Applied Yield %	New Enrollment					Non-URM Enrolled to Admitted Yield %	URM Enrolled to Admitted Yield %	Total Enrollment						
	Grand Total	Non-URM Total		URM Total		Grand Total	Non-URM Total		URM Total				Grand Total	Non-URM Total		URM Total				Grand Total	Non-URM Total		URM Total			
		Count	%	Count	%		Count	%	Count	%				Count	%	Count	%				Count	%	Count	%	Count	%
2013	311	239	76.8%	72	23.2%	239	203	84.9%	36	15.1%	84.9%	50.0%	70	57	81.4%	13	18.6%	28.1%	36.1%	169	128	75.7%	41	24.3%		
2014	255	191	74.9%	64	25.1%	191	153	80.1%	38	19.9%	80.1%	59.4%	58	38	65.5%	20	34.5%	24.8%	52.6%	162	117	72.2%	45	27.8%		
2015	218	162	74.3%	56	25.7%	163	126	77.3%	37	22.7%	77.8%	66.1%	43	27	62.8%	16	37.2%	21.4%	43.2%	135	92	68.1%	43	31.9%		
2016	189	142	75.1%	47	24.9%	133	101	75.9%	32	24.1%	71.1%	68.1%	42	32	76.2%	10	23.8%	31.7%	31.3%	107	71	66.4%	36	33.6%		
2017	171	127	74.3%	44	25.7%	149	114	76.5%	35	23.5%	89.8%	79.5%	47	32	68.1%	15	31.9%	28.1%	42.9%	119	80	67.2%	39	32.8%		
Average	229	172	75.3%	57	24.7%	175	139	79.7%	36	20.3%	81.0%	62.9%	52	37	71.5%	15	28.5%	26.7%	41.6%	138	98	70.5%	40.8	29.5%		

Note: URM stands for Under-Represented Minority and includes American Indian or Alaska Native; Black or African-American; Hispanic / Latino race/ethnicity groups

Applications, Admission, & New Enrollment Yields

by Race/Ethnicity & Gender

Community_Health_Science_MPH [20FY1635MPH]

Fall 2013 through Fall 2017

	Fall Semester Year	Total	Under Represented Minorities (URM)										Race/Eth Not Reported	Male	Female												
			American Indian or Alaska Native		Black or African American		Hispanic / Latino		URM Total		Asian					Native Hawaiian or Pacific Islander		White		Two or More Races		International					
		Count	% Yield	Count	% Yield	Count	% Yield	Count	% Yield	Count	% Yield	Count	% Yield	Count	% Yield	Count	% Yield	Count	% Yield	Count	% Yield	Count	% Yield	Count	% Yield	Count	% Yield
Applied	2013	311		0		40		32		72		25		1		149		11		22		31		25		273	
	2014	255		0		33		31		64		34		1		115		9		12		20		18		228	
	2015	218		0		28		28		56		22		0		110		8		9		13		35		177	
	2016	189		0		24		23		47		20		1		88		7		14		12		17		165	
	2017	171		2		22		20		44		28		0		73		9		13		4		16		147	
Admitted	2013	239	76.8	0	0.0	18	45.0	18	56.3	36	50.0	20	80.0	1	100.0	130	87.2	10	90.9	14	63.6	28	17	68.0	210	76.9	
	2014	191	74.9	0	0.0	18	54.5	20	64.5	38	59.4	21	61.8	1	100.0	98	85.2	8	88.9	6	50.0	19	8	44.4	176	77.2	
	2015	163	74.8	0	0.0	17	60.7	20	71.4	37	66.1	16	72.7	0	0.0	89	80.9	7	87.5	3	33.3	11	27	77.1	131	74.0	
	2016	133	70.4	0	0.0	14	58.3	18	78.3	32	68.1	14	70.0	1	100.0	70	79.5	7	100.0	3	21.4	6	11	64.7	117	70.9	
	2017	149	87.1	2	100.0	13	59.1	20	100.0	35	79.5	25	89.3	0	0.0	67	91.8	6	66.7	12	92.3	4	13	81.3	129	87.8	
Enrolled	2013	70	29.3	0	0.0	5	27.8	8	44.4	13	36.1	7	35.0	1	100.0	40	30.8	3	30.0	2	14.3	4	9	52.9	61	29.0	
	2014	58	30.4	0	0.0	12	66.7	8	40.0	20	52.6	7	33.3	0	0.0	27	27.6	0	0.0	2	33.3	2	4	50.0	53	30.1	
	2015	43	26.4	0	0.0	6	35.3	10	50.0	16	43.2	8	50.0	0	0.0	17	19.1	0	0.0	1	33.3	1	8	29.6	35	26.7	
	2016	42	31.6	0	0.0	4	28.6	6	33.3	10	31.3	3	21.4	1	100.0	26	37.1	1	14.3	1	33.3	0	4	36.4	38	32.5	
	2017	47	31.5	1	50.0	5	38.5	9	45.0	15	42.9	9	36.0	0	0.0	17	25.4	1	16.7	5	41.7	0	4	30.8	41	31.8	

Notes:

- 1) URM stands for Under-Represented Minority and includes American Indian or Alaska Native; Black or African-American; Hispanic / Latino race/ethnicity groups
- 2) Unreported Gender identification is not shown; Male and Female total may not match Total
- 3) In rare situations, the "% Yield" columns may be greater than 100. There are three potential reasons for this:
 - a) Students that received Graduate College approved transfers may not have an admission record for the program that they enrolled into.
 - b) Students with a secondary curriculum enrollment may not have an admission record for that secondary program.
 - c) Students who were newly enrolled in the summer term prior to the fall were added to the fall new enrollment totals.

Applications, Admission, & New Enrollment Yields, cont. by Race/Ethnicity & Gender

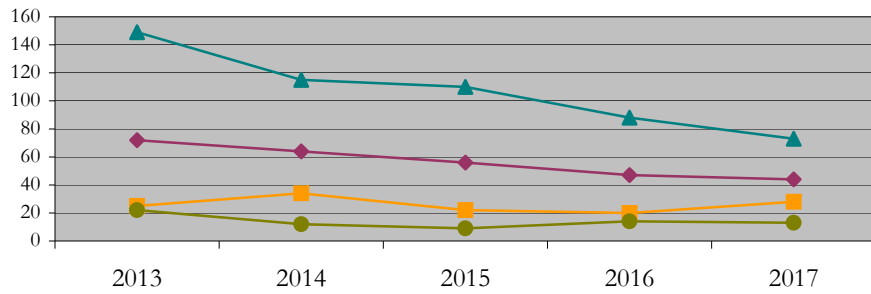
Community_Health_Science_MPH [20FY1635MPH]

Fall 2013 through Fall 2017

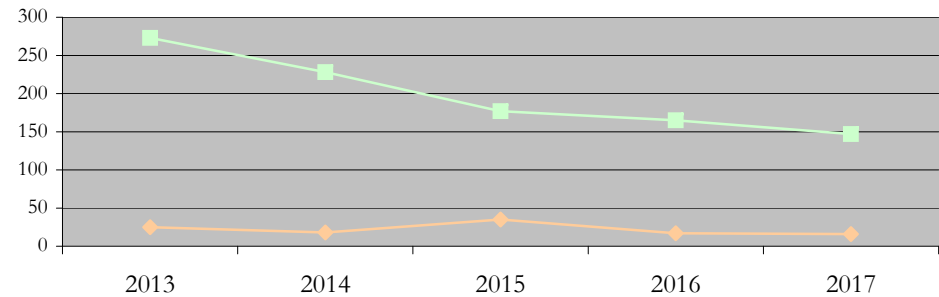
URM Total Asian White International

Male Female

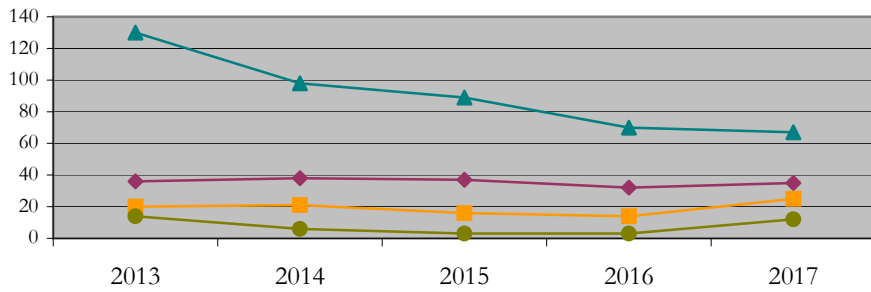
Applications by Race/Ethnicity



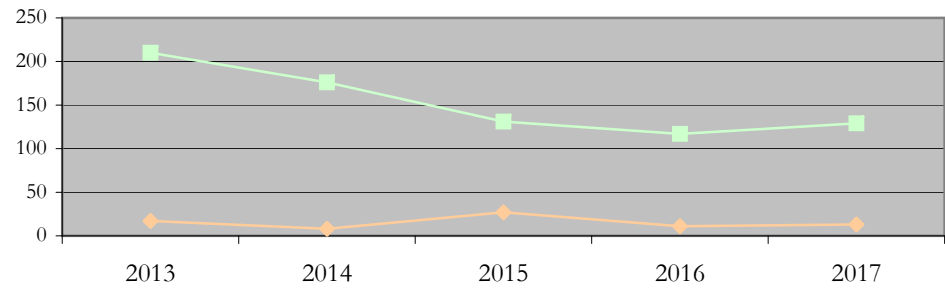
Applications by Gender



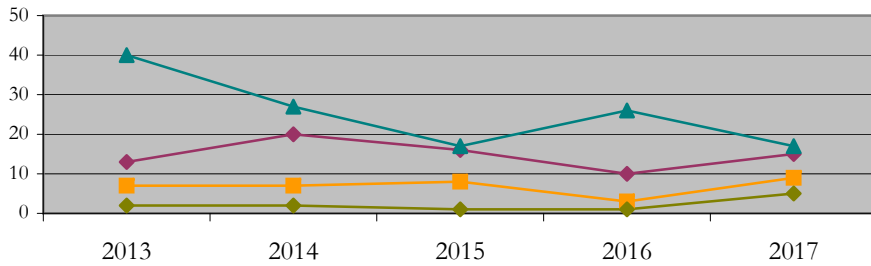
Admissions by Race/Ethnicity



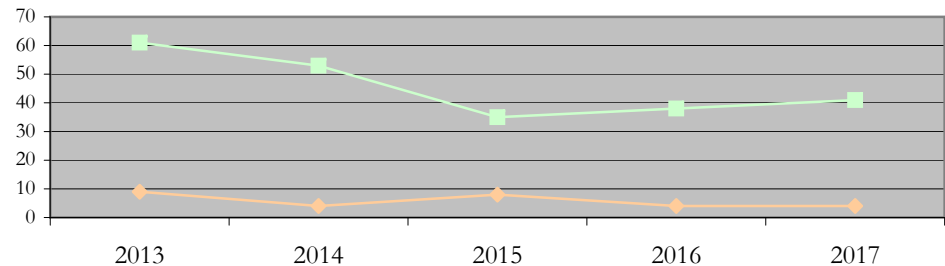
Admissions by Gender



New Enrollments by Race/Ethnicity



New Enrollments by Gender



Notes: 1) URM stands for Under-Represented Minority and includes American Indian or Alaska Native; Black or African-American; Hispanic / Latino race/ethnicity groups
2) Individual URM groups, Native Hawaiian Pacific Islander, Two or More Races, and Other race/ethnicity categories left off these charts due to relatively low numbers

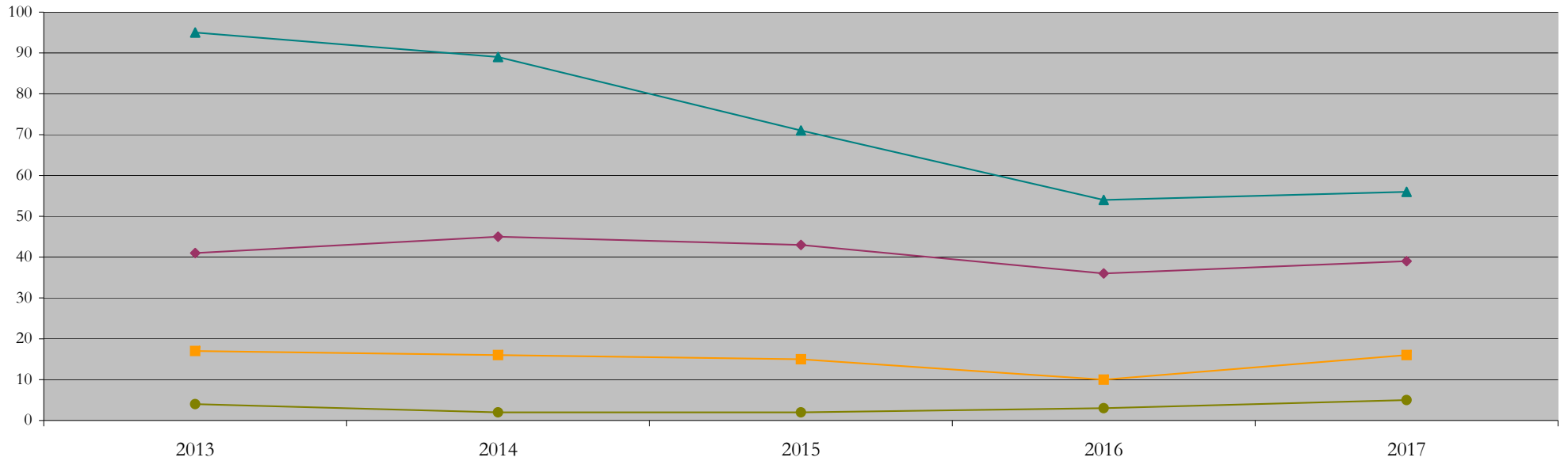
Total Enrollment (includes secondary curriculum)

by Race/Ethnicity

Community_Health_Science_MPH [20FY1635MPH]

Fall 2013 through Fall 2017

Fall Semester Year	Total	Under Represented Minorities (URM)																		
		American Indian or Alaska Native		Black or African American		Hispanic / Latino		URM Total		Asian		Native Hawaiian or Pacific Islander		White		Two or More Races		International		Race/Eth Not Reported
		Count	%	Count	%	Count	%	Count	%	Count	%	Count	%	Count	%	Count	%	Count	%	Count
2013	169	0	0.0	23	13.6	18	10.7	41	24.3	17	10.1	1	0.6	95	56.2	6	3.6	4	2.4	5
2014	162	0	0.0	27	16.7	18	11.1	45	27.8	16	9.9	1	0.6	89	54.9	3	1.9	2	1.2	6
2015	135	0	0.0	24	17.8	19	14.1	43	31.9	15	11.1	0	0.0	71	52.6	1	0.7	2	1.5	3
2016	107	0	0.0	16	15.0	20	18.7	36	33.6	10	9.3	1	0.9	54	50.5	3	2.8	3	2.8	0
2017	119	0	0.0	16	13.4	23	19.3	39	32.8	16	13.4	0	0.0	56	47.1	3	2.5	5	4.2	0



Notes: 1) URM stands for Under-Represented Minority and includes American Indian or Alaska Native; Black or African-American; Hispanic / Latino race/ethnicity groups
 2) Individual URM groups, Native Hawaiian Pacific Islander, Two or More Races, and Other race/ethnicity categories left off this chart due to relatively low numbers

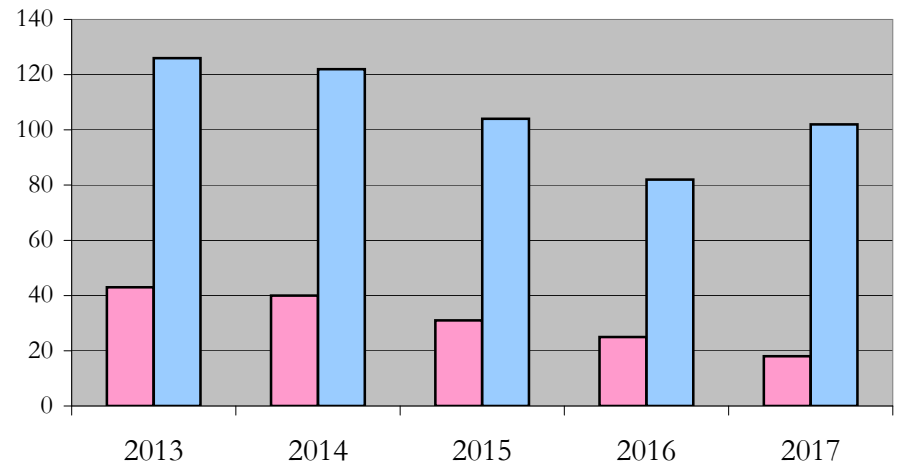
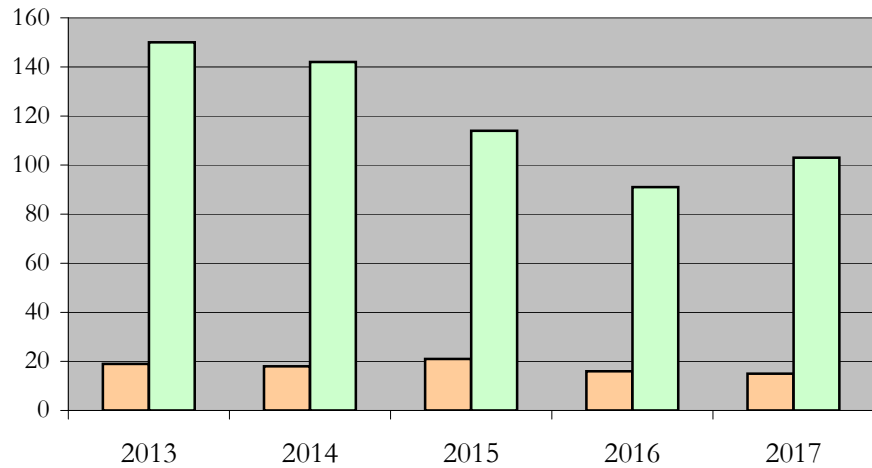
Total Enrollment (includes secondary curriculum)

by Student Type, Gender, and Enrollment Time

Community_Health_Science_MPH [20FY1635MPH]

Fall 2013 through Fall 2017

Fall Semester Year	Total	New		Continuing		Male		Female		Gender Not Reported	Part-time		Full-time	
		Count	%	Count	%	Count	%	Count	%	Count	Count	%	Count	%
2013	169	70	41.4	99	58.6	19	11.2	150	88.8	0	43	25.4	126	74.6
2014	162	58	35.8	104	64.2	18	11.1	142	87.7	2	40	24.7	122	75.3
2015	135	43	31.9	92	68.1	21	15.6	114	84.4	0	31	23.0	104	77.0
2016	107	42	39.3	65	60.7	16	15.0	91	85.0	0	25	23.4	82	76.6
2017	119	47	39.5	72	60.5	15	12.6	103	86.6	1	18	15.1	102	85.7



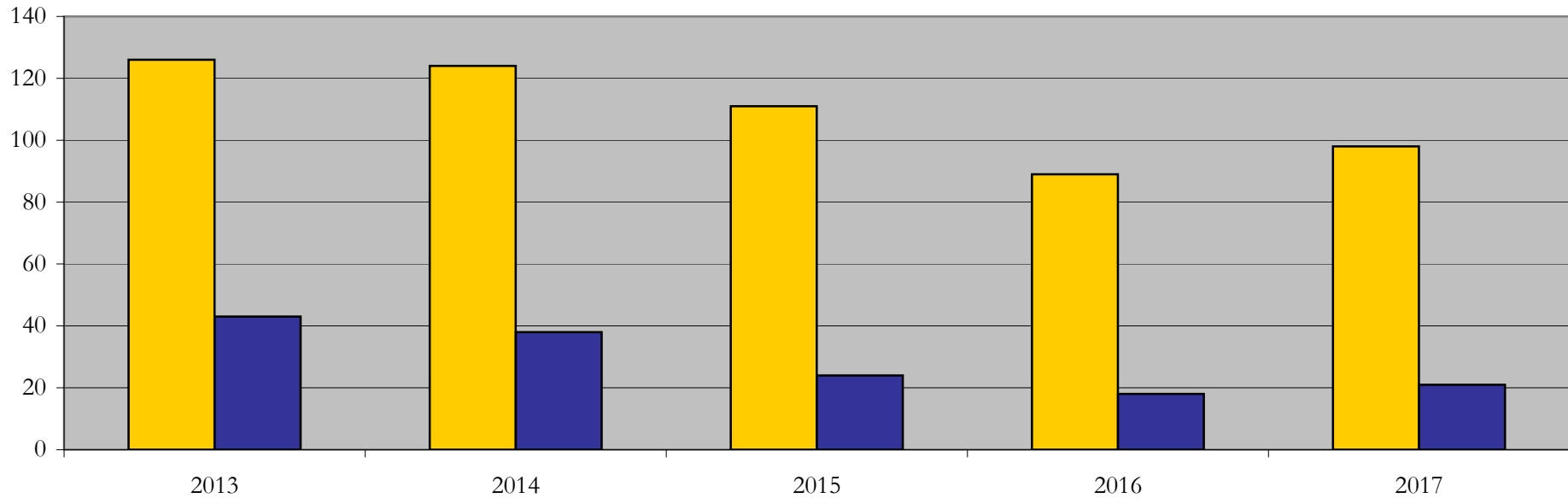
Enrollment & Degrees Conferred

by Primary/Secondary, Average Age, State Residency

Community_Health_Science_MPH [20FY1635MPH]

Fall 2013 through Fall 2017

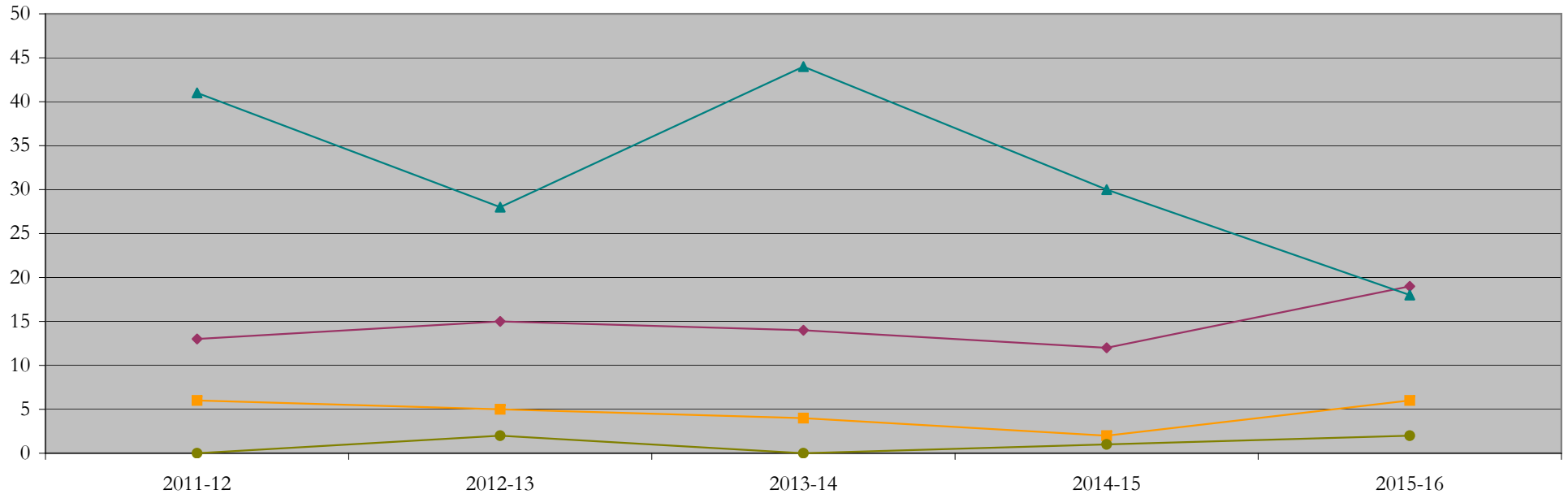
Fall Semester Year	Enrollment			Average Age			State Residency of Total Enrollment					
	Total	Primary	Secondary	Fall New Enrollment	Fall Continuing Enrollment	Academic Year Graduating Class	Residents			Non-Residents		
							Total Enrollment	New Enrollment	Continuing Enrollment	Total Enrollment	New Enrollment	Continuing Enrollment
2013	169	147	22	27	30	27	126	48	78	43	22	21
2014	162	140	22	27	29	28	124	41	83	38	17	21
2015	135	113	22	27	30	27	111	34	77	24	9	15
2016	107	94	13	27	30	29	89	31	58	18	11	7
2017	119	106	13	28	29	28	98	35	63	21	12	9



Degrees Conferred by Race/Ethnicity

Community_Health_Science_MPH [20FY1635MPH]
AY2011-12 through 2015-16

Academic Year	Total	Under Represented Minorities (URM)								Asian		Native Hawaiian or Pacific		White		Two or More Races		International		Not Reported
		American Indian or Alaska Native		Black or African American		Hispanic / Latino		URM Total		Count	%	Count	%	Count	%	Count	%	Count	%	Count
		Count	%	Count	%	Count	%	Count	%											
2012 - 2013	65	1	1.5	7	10.8	5	7.7	13	20.0	6	9.2	0	0.0	41	63.1	3	4.6	0	0.0	2
2013 - 2014	51	0	0.0	10	19.6	5	9.8	15	29.4	5	9.8	0	0.0	28	54.9	1	2.0	2	3.9	0
2014 - 2015	70	0	0.0	7	10.0	7	10.0	14	20.0	4	5.7	0	0.0	44	62.9	3	4.3	0	0.0	5
2015 - 2016	49	0	0.0	7	14.3	5	10.2	12	24.5	2	4.1	1	2.0	30	61.2	2	4.1	1	2.0	1
2016 - 2017	47	0	0.0	14	29.8	5	10.6	19	40.4	6	12.8	0	0.0	18	38.3	1	2.1	2	4.3	1



Notes: 1) URM stands for Under-Represented Minority and includes American Indian or Alaska Native; Black or African-American; Hispanic / Latino race/ethnicity groups
2) Individual URM groups, Native Hawaiian Pacific Islander, Two or More Races, and Other race/ethnicity categories left off this chart due to relatively low numbers

Degrees Conferred

by Gender

Community_Health_Science_MPH [20FY1635MPH]

AY2011-12 through 2015-16

Academic Year	Total	Male		Female		Not Reported
		Count	%	Count	%	
2012 - 2013	65	3	4.6	62	95.4	0
2013 - 2014	51	7	13.7	44	86.3	0
2014 - 2015	70	9	12.9	61	87.1	0
2015 - 2016	49	5	10.2	44	89.8	0
2016 - 2017	47	5	10.6	42	89.4	0

