

# Matriculation

## Diversity Pipeline

Biostatistics\_MS [20FS1634MS]

Fall 2014 - Fall 2018

Fall Semester Year	Applied					Admitted					Non-URM Admitted to Applied Yield %	URM Admitted to Applied Yield %	New Enrollment					Non-URM Enrolled to Admitted Yield %	URM Enrolled to Admitted Yield %	Total Enrollment				
	Grand Total	Non-URM Total		URM Total		Grand Total	Non-URM Total		URM Total				Grand Total	Non-URM Total		URM Total				Grand Total	Non-URM Total		URM Total	
		Count	%	Count	%		Count	%	Count	%				Count	%	Count	%				Count	%	Count	%
2014	29	29	100.0%	0	0.0%	23	23	100.0%	0	0.0%	79.3%	0.0%	8	8	100.0%	0	0.0%	34.8%	0.0%	15	14	93.3%	1	6.7%
2015	39	37	94.9%	2	5.1%	22	21	95.5%	1	4.5%	56.8%	50.0%	8	8	100.0%	0	0.0%	38.1%	0.0%	17	16	94.1%	1	5.9%
2016	38	38	100.0%	0	0.0%	30	30	100.0%	0	0.0%	78.9%	0.0%	3	3	100.0%	0	0.0%	10.0%	0.0%	14	13	92.9%	1	7.1%
2017	46	40	87.0%	6	13.0%	33	30	90.9%	3	9.1%	75.0%	50.0%	8	8	100.0%	0	0.0%	26.7%	0.0%	12	12	100.0%	0	0.0%
2018	33	30	90.9%	3	9.1%	27	24	88.9%	3	11.1%	80.0%	100.0%	6	5	83.3%	1	16.7%	20.8%	33.3%	14	13	92.9%	1	7.1%
<b>Average</b>	<b>37</b>	<b>35</b>	<b>94.1%</b>	<b>2</b>	<b>5.9%</b>	<b>27</b>	<b>26</b>	<b>94.8%</b>	<b>1</b>	<b>5.2%</b>	<b>73.6%</b>	<b>63.6%</b>	<b>7</b>	<b>6</b>	<b>97.0%</b>	<b>0</b>	<b>3.0%</b>	<b>25.0%</b>	<b>14.3%</b>	<b>14</b>	<b>14</b>	<b>94.4%</b>	<b>0.8</b>	<b>5.6%</b>

**Note:** URM stands for Under-Represented Minority and includes American Indian or Alaska Native; Black or African-American; Hispanic / Latino race/ethnicity groups

# Applications, Admission, & New Enrollment Yields

## by Race/Ethnicity & Gender

Biostatistics\_MS [20FS1634MS]

Fall 2014 - Fall 2018

	Fall Semester Year	Total	Under Represented Minorities (URM)										Race/Eth Not Reported	Male	Female												
			American Indian or Alaska Native		Black or African American		Hispanic / Latino		URM Total		Asian					Native Hawaiian or Pacific Islander		White		Two or More Races		International					
		Count	% Yield	Count	% Yield	Count	% Yield	Count	% Yield	Count	% Yield	Count	% Yield	Count	% Yield	Count	% Yield	Count	% Yield	Count	% Yield	Count	% Yield	Count	% Yield	Count	% Yield
Applied	2014	29		0		0		0		0		4		0		11		0		12		2		13		15	
	2015	39		0		0		2		2		9		0		11		0		15		2		16		20	
	2016	38		0		0		0		0		2		0		14		1		21		0		10		28	
	2017	46		0		1		5		6		8		0		13		0		18		1		16		27	
	2018	33		0		0		3		3		6		0		3		0		12		9		17		16	
		Count	% Yield	Count	% Yield	Count	% Yield	Count	% Yield	Count	% Yield	Count	% Yield	Count	% Yield	Count	% Yield	Count	% Yield	Count	% Yield	Count	% Yield	Count	% Yield	Count	% Yield
Admitted	2014	23	79.3	0	0.0	0	0.0	0	0.0	0	0.0	3	75.0	0	0.0	11	100.0	0	0.0	7	58.3	2		10	76.9	12	80.0
	2015	22	56.4	0	0.0	0	0.0	1	50.0	1	50.0	6	66.7	0	0.0	7	63.6	0	0.0	6	40.0	2		10	62.5	10	50.0
	2016	30	78.9	0	0.0	0	0.0	0	0.0	0	0.0	2	100.0	0	0.0	11	78.6	1	100.0	16	76.2	0		8	80.0	22	78.6
	2017	33	71.7	0	0.0	0	0.0	3	60.0	3	50.0	6	75.0	0	0.0	12	92.3	0	0.0	11	61.1	1		12	75.0	19	70.4
	2018	27	81.8	0	0.0	0	0.0	3	100.0	3	100.0	6	100.0	0	0.0	3	100.0	0	0.0	8	66.7	7		13	76.5	14	87.5
		Count	% Yield	Count	% Yield	Count	% Yield	Count	% Yield	Count	% Yield	Count	% Yield	Count	% Yield	Count	% Yield	Count	% Yield	Count	% Yield	Count	% Yield	Count	% Yield	Count	% Yield
Enrolled	2014	8	34.8	0	0.0	0	0.0	0	0.0	0	0.0	1	33.3	0	0.0	4	36.4	0	0.0	2	28.6	1		4	40.0	4	33.3
	2015	8	36.4	0	0.0	0	0.0	0	0.0	0	0.0	2	33.3	0	0.0	5	71.4	0	0.0	1	16.7	0		3	30.0	5	50.0
	2016	3	10.0	0	0.0	0	0.0	0	0.0	0	0.0	0	0.0	0	0.0	2	18.2	0	0.0	1	6.3	0		0	0.0	3	13.6
	2017	8	24.2	0	0.0	0	0.0	0	0.0	0	0.0	2	33.3	0	0.0	3	25.0	0	0.0	3	27.3	0		3	25.0	5	26.3
	2018	6	22.2	0	0.0	0	0.0	1	33.3	1	33.3	3	50.0	0	0.0	1	33.3	0	0.0	1	12.5	0		3	23.1	3	21.4

**Notes:**

- 1) URM stands for Under-Represented Minority and includes American Indian or Alaska Native; Black or African-American; Hispanic / Latino race/ethnicity groups
- 2) Unreported Gender identification is not shown; Male and Female total may not match Total
- 3) In rare situations, the "% Yield" columns may be greater than 100. There are three potential reasons for this:
  - a) Students that received Graduate College approved transfers may not have an admission record for the program that they enrolled into.
  - b) Students with a secondary curriculum enrollment may not have an admission record for that secondary program.
  - c) Students who were newly enrolled in the summer term prior to the fall were added to the fall new enrollment totals.

# Applications, Admission, & New Enrollment Yields, cont. by Race/Ethnicity & Gender

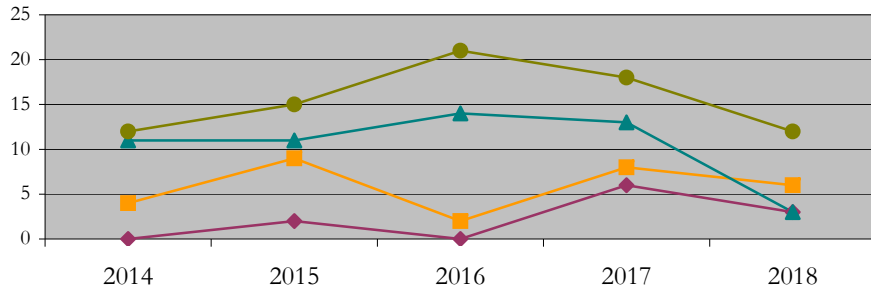
Biostatistics\_MS [20FS1634MS]

Fall 2014 - Fall 2018

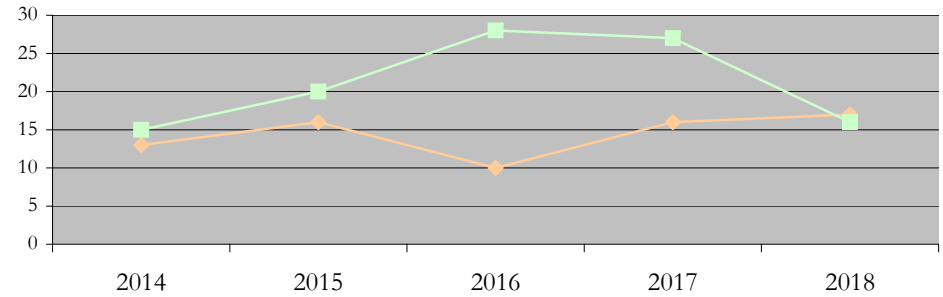
◆ URM Total    ■ Asian    ▲ White    ● International

◆ Male    ■ Female

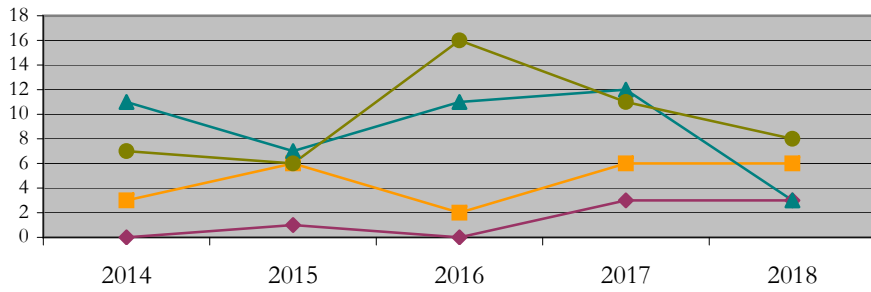
Applications by Race/Ethnicity



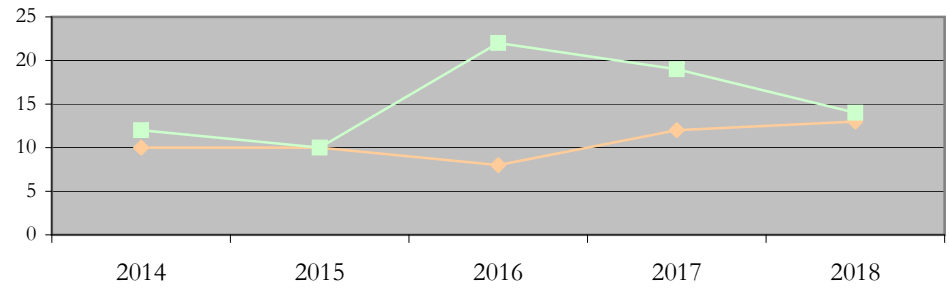
Applications by Gender



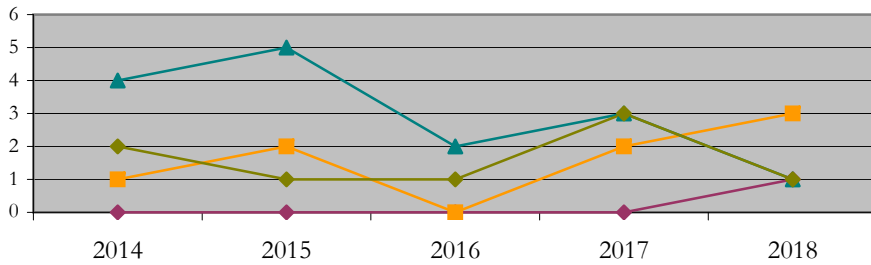
Admissions by Race/Ethnicity



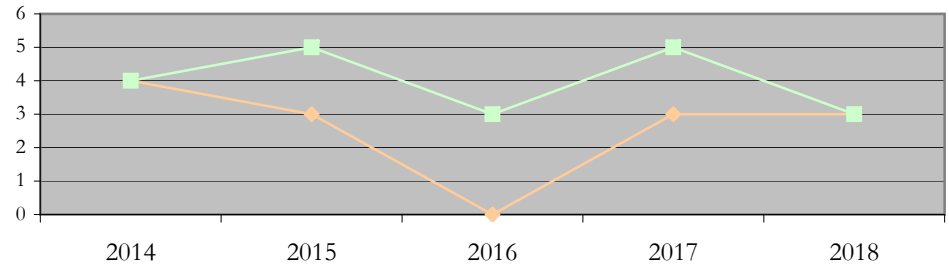
Admissions by Gender



New Enrollments by Race/Ethnicity



New Enrollments by Gender



**Notes:** 1) URM stands for Under-Represented Minority and includes American Indian or Alaska Native; Black or African-American; Hispanic / Latino race/ethnicity groups  
2) Individual URM groups, Native Hawaiian Pacific Islander, Two or More Races, and Other race/ethnicity categories left off these charts due to relatively low numbers

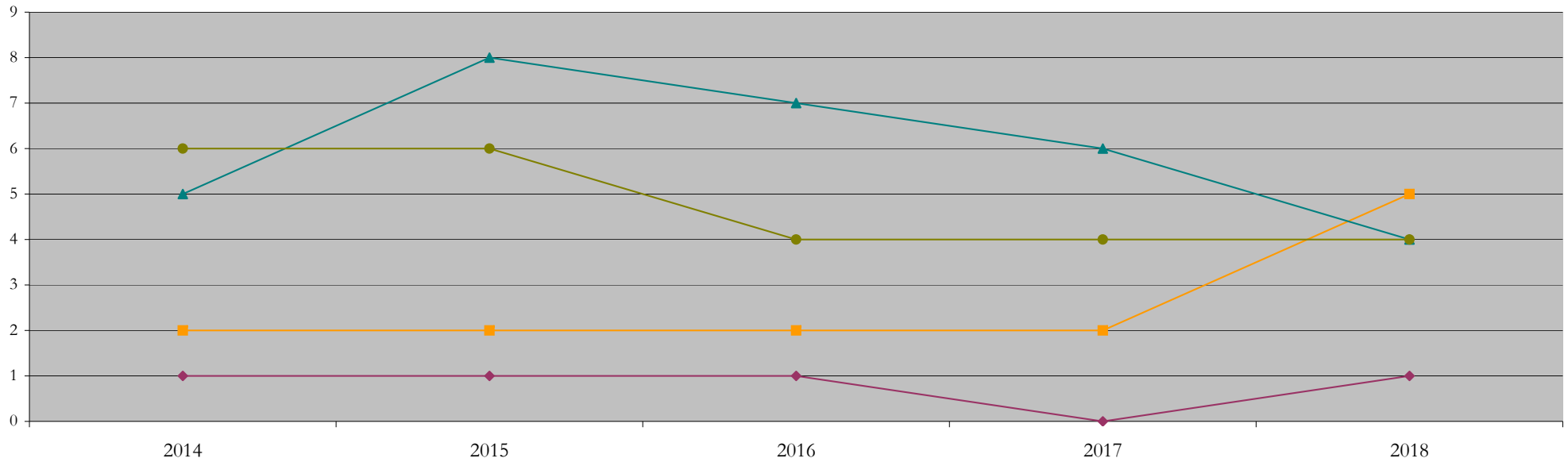
# Total Enrollment (includes secondary curriculum)

## by Race/Ethnicity

Biostatistics\_MS [20FS1634MS]

Fall 2014 - Fall 2018

Fall Semester Year	Total	Under Represented Minorities (URM)										Asian	Native Hawaiian or Pacific Islander	White	Two or More Races	International	Race/Eth Not Reported			
		American Indian or Alaska Native		Black or African American		Hispanic / Latino		URM Total												
		Count	%	Count	%	Count	%	Count	%											
2014	15	0	0.0	1	6.7	0	0.0	1	6.7	2	13.3	0	0.0	5	33.3	0	0.0	6	40.0	1
2015	17	0	0.0	1	5.9	0	0.0	1	5.9	2	11.8	0	0.0	8	47.1	0	0.0	6	35.3	0
2016	14	0	0.0	1	7.1	0	0.0	1	7.1	2	14.3	0	0.0	7	50.0	0	0.0	4	28.6	0
2017	12	0	0.0	0	0.0	0	0.0	0	0.0	2	16.7	0	0.0	6	50.0	0	0.0	4	33.3	0
2018	14	0	0.0	0	0.0	1	7.1	1	7.1	5	35.7	0	0.0	4	28.6	0	0.0	4	28.6	0



**Notes:** 1) URM stands for Under-Represented Minority and includes American Indian or Alaska Native; Black or African-American; Hispanic / Latino race/ethnicity groups  
 2) Individual URM groups, Native Hawaiian Pacific Islander, Two or More Races, and Other race/ethnicity categories left off this chart due to relatively low numbers

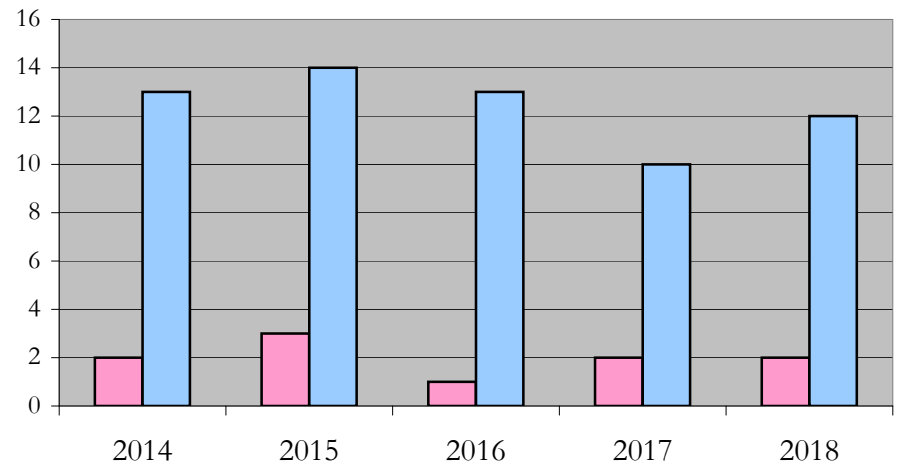
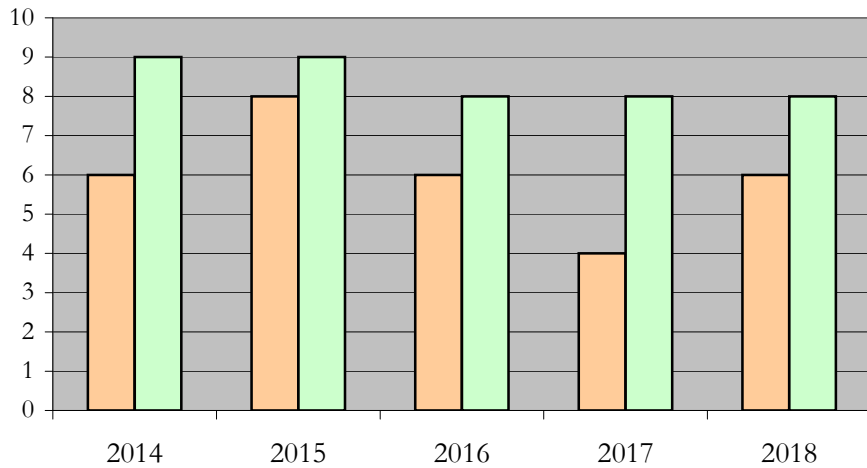
**Total Enrollment (includes secondary curriculum)**

**by Student Type, Gender, and Enrollment Time**

Biostatistics\_MS [20FS1634MS]

Fall 2014 - Fall 2018

Fall Semester Year	Total	New		Continuing		Male		Female		Gender Not Reported	Part-time		Full-time	
		Count	%	Count	%	Count	%	Count	%	Count	Count	%	Count	%
2014	15	8	53.3	7	46.7	6	40.0	9	60.0	0	2	13.3	13	86.7
2015	17	8	47.1	9	52.9	8	47.1	9	52.9	0	3	17.6	14	82.4
2016	14	3	21.4	11	78.6	6	42.9	8	57.1	0	1	7.1	13	92.9
2017	12	8	66.7	4	33.3	4	33.3	8	66.7	0	2	16.7	10	83.3
2018	14	6	42.9	8	57.1	6	42.9	8	57.1	0	2	14.3	12	85.7



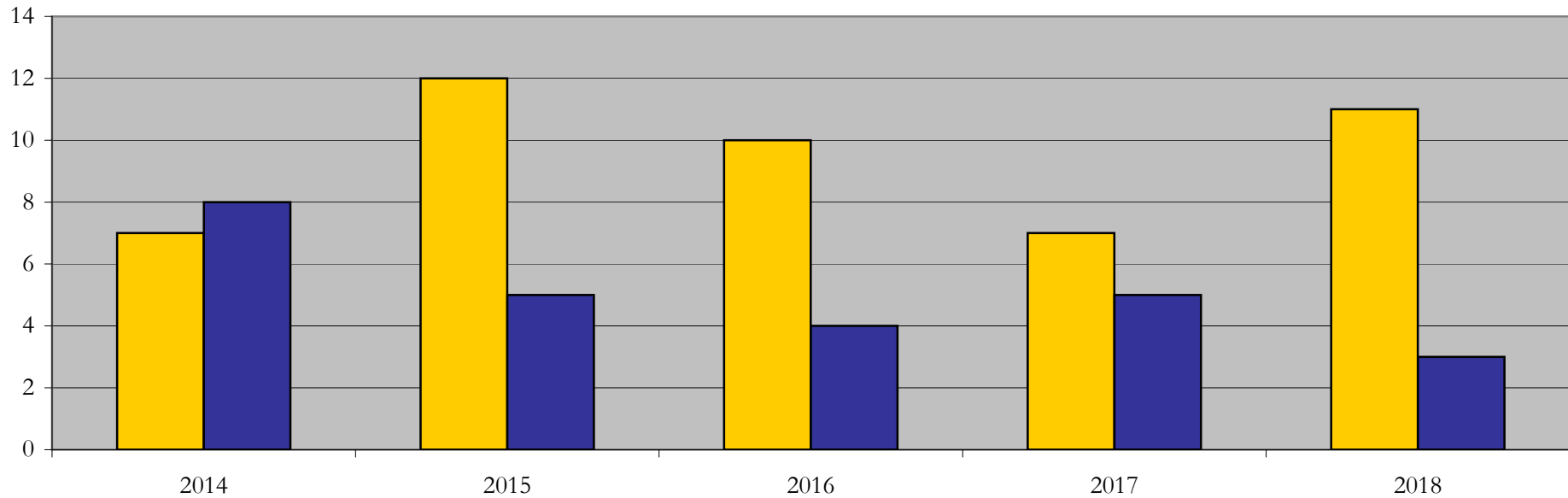
## Enrollment & Degrees Conferred

### by Primary/Secondary, Average Age, State Residency

Biostatistics\_MS [20FS1634MS]

Fall 2014 - Fall 2018

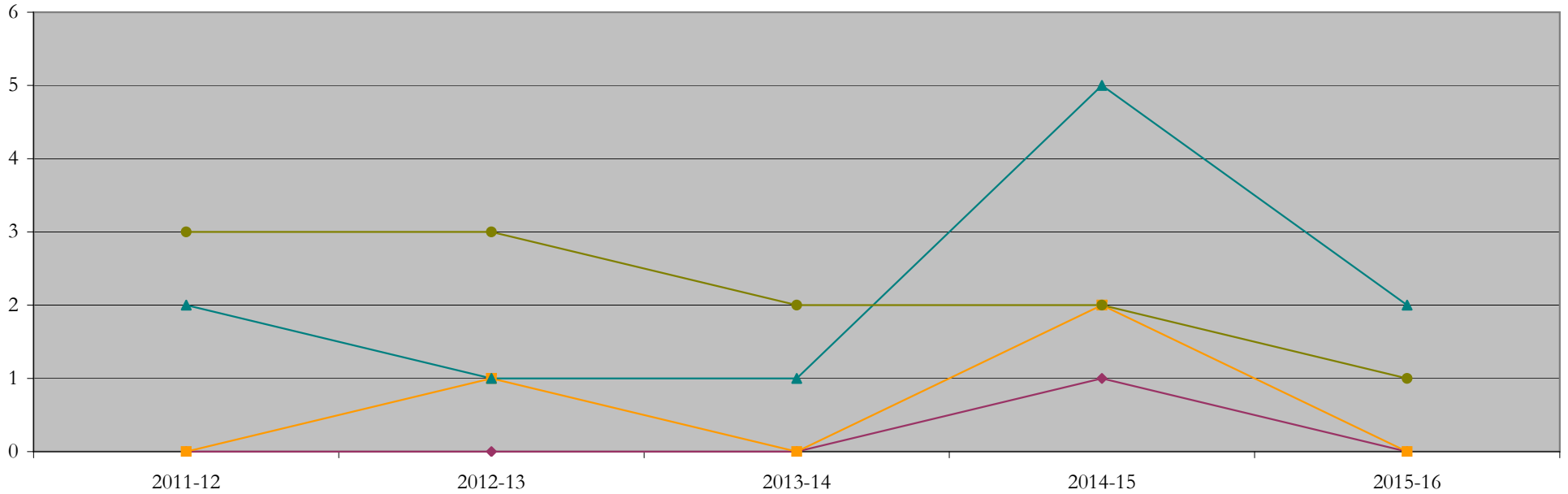
Fall Semester Year	Enrollment			Average Age			State Residency of Total Enrollment					
	Total	Primary	Secondary	Fall New Enrollment	Fall Continuing Enrollment	Academic Year Graduating Class	Residents			Non-Residents		
							Total Enrollment	New Enrollment	Continuing Enrollment	Total Enrollment	New Enrollment	Continuing Enrollment
2014	15	15	0	29	31	28	7	5	2	8	3	5
2015	17	17	0	25	33	30	12	7	5	5	1	4
2016	14	14	0	26	29	28	10	1	9	4	2	2
2017	12	12	0	29	27	27	7	6	1	5	2	3
2018	14	14	0	30	30	25	11	5	6	3	1	2



# Degrees Conferred by Race/Ethnicity

Biostatistics\_MS [20FS1634MS]  
AY2011-12 through 2015-16

Academic Year	Total	Under Represented Minorities (URM)								Asian		Native Hawaiian or Pacific		White		Two or More Races		International		Not Reported
		American Indian or Alaska Native		Black or African American		Hispanic / Latino		URM Total		Count	%	Count	%	Count	%	Count	%	Count	%	
		Count	%	Count	%	Count	%	Count	%											
2013 - 2014	5	0	0.0	0	0.0	0	0.0	0	0.0	0	0.0	0	0.0	2	40.0	0	0.0	3	60.0	0
2014 - 2015	5	0	0.0	0	0.0	0	0.0	0	0.0	1	20.0	0	0.0	1	20.0	0	0.0	3	60.0	0
2015 - 2016	4	0	0.0	0	0.0	0	0.0	0	0.0	0	0.0	0	0.0	1	25.0	0	0.0	2	50.0	1
2016 - 2017	10	0	0.0	1	10.0	0	0.0	1	10.0	2	20.0	0	0.0	5	50.0	0	0.0	2	20.0	0
2017 - 2018	3	0	0.0	0	0.0	0	0.0	0	0.0	0	0.0	0	0.0	2	66.7	0	0.0	1	33.3	0



**Notes:** 1) URM stands for Under-Represented Minority and includes American Indian or Alaska Native; Black or African-American; Hispanic / Latino race/ethnicity groups  
2) Individual URM groups, Native Hawaiian Pacific Islander, Two or More Races, and Other race/ethnicity categories left off this chart due to relatively low numbers

## Degrees Conferred

### by Gender

Biostatistics\_MS [20FS1634MS]

AY2011-12 through 2015-16

Academic Year	Total	Male		Female		Not Reported
		Count	%	Count	%	
2013 - 2014	5	2	40.0	3	60.0	0
2014 - 2015	5	0	0.0	5	100.0	0
2015 - 2016	4	0	0.0	4	100.0	0
2016 - 2017	10	5	50.0	5	50.0	0
2017 - 2018	3	0	0.0	3	100.0	0

