

Matriculation

Diversity Pipeline

Health_Policy_and_Administration_PHD [20FS1638PHD]

Fall 2013 through Fall 2017

Fall Semester Year	Applied					Admitted					Non-URM Admitted to Applied Yield %	URM Admitted to Applied Yield %	New Enrollment					Non-URM Enrolled to Admitted Yield %	URM Enrolled to Admitted Yield %	Total Enrollment				
	Grand Total	Non-URM Total		URM Total		Grand Total	Non-URM Total		URM Total				Grand Total	Non-URM Total		URM Total				Grand Total	Non-URM Total		URM Total	
		Count	%	Count	%		Count	%	Count	%				Count	%	Count	%				Count	%	Count	%
	Count	%	Count	%	Count	%	Count	%	Count	%			Count	%	Count	%	Count			%	Count	%		
2013	46	37	80.4%	9	19.6%	13	12	92.3%	1	7.7%	32.4%	11.1%	6	5	83.3%	1	16.7%	41.7%	100.0%	23	18	78.3%	5	21.7%
2014	36	28	77.8%	8	22.2%	9	6	66.7%	3	33.3%	21.4%	37.5%	5	4	80.0%	1	20.0%	66.7%	33.3%	27	21	77.8%	6	22.2%
2015	38	34	89.5%	4	10.5%	1	1	100.0%	0	0.0%	2.9%	0.0%	1	0	0.0%	1	100.0%	0.0%	#DIV/0!	22	17	77.3%	5	22.7%
2016	35	33	94.3%	2	5.7%	8	8	100.0%	0	0.0%	24.2%	0.0%	2	2	100.0%	0	0.0%	25.0%	0.0%	20	17	85.0%	3	15.0%
2017	23	20	87.0%	3	13.0%	3	3	100.0%	0	0.0%	15.0%	0.0%	2	2	100.0%	0	0.0%	66.7%	0.0%	17	16	94.1%	1	5.9%
Average	36	30	85.4%	5	14.6%	7	6	88.2%	1	11.8%	19.7%	15.4%	3	3	81.3%	1	18.8%	43.3%	75.0%	22	18	81.7%	4	18.3%

Note: URM stands for Under-Represented Minority and includes American Indian or Alaska Native; Black or African-American; Hispanic / Latino race/ethnicity groups

Applications, Admission, & New Enrollment Yields

by Race/Ethnicity & Gender

Health_Policy_and_Administration_PHD [20FS1638PHD]

Fall 2013 through Fall 2017

	Fall Semester Year	Total		Under Represented Minorities (URM)										Race/Eth Not Reported		Male		Female									
				American Indian or Alaska Native		Black or African American		Hispanic / Latino		URM Total		Asian								Native Hawaiian or Pacific Islander		White		Two or More Races		International	
		Count	% Yield	Count	% Yield	Count	% Yield	Count	% Yield	Count	% Yield	Count	% Yield	Count	% Yield	Count	% Yield	Count	% Yield	Count	% Yield	Count	% Yield				
Applied	2013	46		0		8		1		9		4		0		12		1		19		1		15		30	
	2014	36		0		6		2		8		2		0		6		0		18		2		10		25	
	2015	38		0		2		2		4		3		0		5		0		25		1		15		22	
	2016	35		0		0		2		2		4		0		5		0		23		1		11		24	
	2017	23		1		1		1		3		3		0		4		0		13		0		9		14	
		Count	% Yield	Count	% Yield	Count	% Yield	Count	% Yield	Count	% Yield	Count	% Yield	Count	% Yield	Count	% Yield	Count	% Yield	Count	% Yield	Count	% Yield	Count	% Yield	Count	% Yield
Admitted	2013	13	28.3	0	0.0	1	12.5	0	0.0	1	11.1	3	75.0	0	0.0	5	41.7	0	0.0	4	21.1	0		4	26.7	9	30.0
	2014	9	25.0	0	0.0	2	33.3	1	50.0	3	37.5	1	50.0	0	0.0	2	33.3	0	0.0	3	16.7	0		3	30.0	6	24.0
	2015	1	2.6	0	0.0	0	0.0	0	0.0	0	0.0	0	0.0	0	0.0	1	20.0	0	0.0	0	0.0	0		0	0.0	1	4.5
	2016	8	22.9	0	0.0	0	0.0	0	0.0	0	0.0	0	0.0	0	0.0	4	80.0	0	0.0	4	17.4	0		1	9.1	7	29.2
	2017	3	13.0	0	0.0	0	0.0	0	0.0	0	0.0	1	33.3	0	0.0	1	25.0	0	0.0	1	7.7	0		1	11.1	2	14.3
		Count	% Yield	Count	% Yield	Count	% Yield	Count	% Yield	Count	% Yield	Count	% Yield	Count	% Yield	Count	% Yield	Count	% Yield	Count	% Yield	Count	% Yield	Count	% Yield	Count	% Yield
Enrolled	2013	6	46.2	0	0.0	1	100.0	0	0.0	1	100.0	0	0.0	0	0.0	3	60.0	0	0.0	2	50.0	0		2	50.0	4	44.4
	2014	5	55.6	0	0.0	0	0.0	1	100.0	1	33.3	0	0.0	0	0.0	1	50.0	0	0.0	3	100.0	0		1	33.3	4	66.7
	2015	1	100.0	0	0.0	0	0.0	1	0.0	1	0.0	0	0.0	0	0.0	0	0.0	0	0.0	0	0.0	0		0	0.0	1	100.0
	2016	2	25.0	0	0.0	0	0.0	0	0.0	0	0.0	0	0.0	0	0.0	0	0.0	0	0.0	2	50.0	0		0	0.0	2	28.6
	2017	2	66.7	0	0.0	0	0.0	0	0.0	0	0.0	1	100.0	0	0.0	0	0.0	0	0.0	1	100.0	0		0	0.0	2	100.0

Notes:

- 1) URM stands for Under-Represented Minority and includes American Indian or Alaska Native; Black or African-American; Hispanic / Latino race/ethnicity groups
- 2) Unreported Gender identification is not shown; Male and Female total may not match Total
- 3) In rare situations, the "% Yield" columns may be greater than 100. There are three potential reasons for this:
 - a) Students that received Graduate College approved transfers may not have an admission record for the program that they enrolled into.
 - b) Students with a secondary curriculum enrollment may not have an admission record for that secondary program.
 - c) Students who were newly enrolled in the summer term prior to the fall were added to the fall new enrollment totals.

Applications, Admission, & New Enrollment Yields, cont. by Race/Ethnicity & Gender

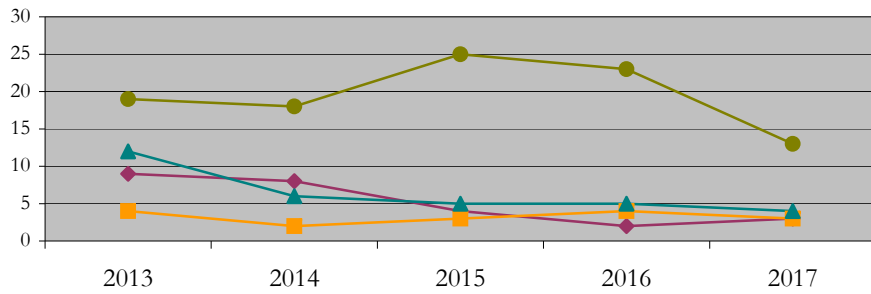
Health_Policy_and_Administration_PHD [20FS1638PHD]

Fall 2013 through Fall 2017

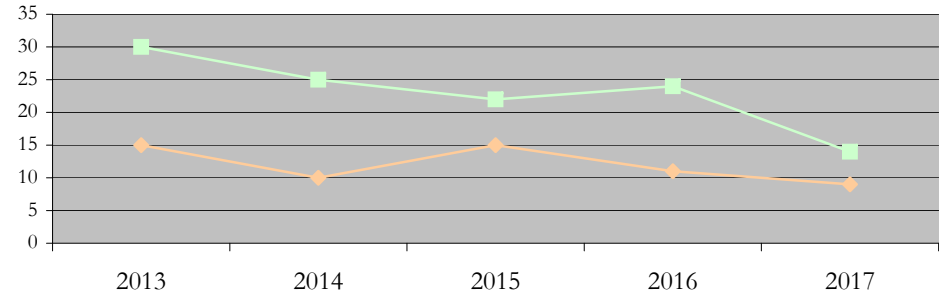
URM Total Asian White International

Male Female

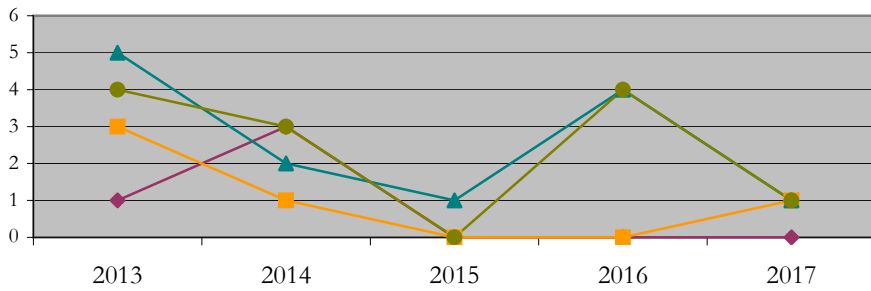
Applications by Race/Ethnicity



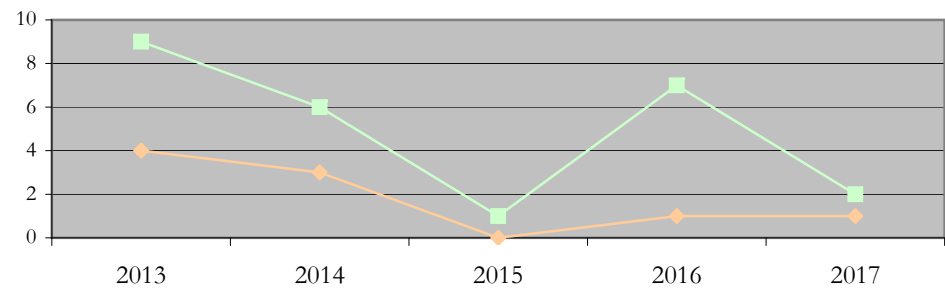
Applications by Gender



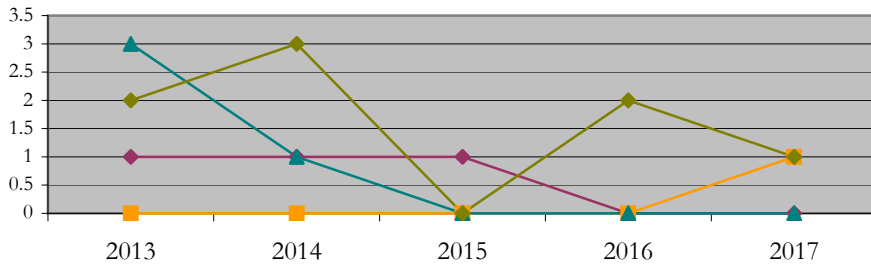
Admissions by Race/Ethnicity



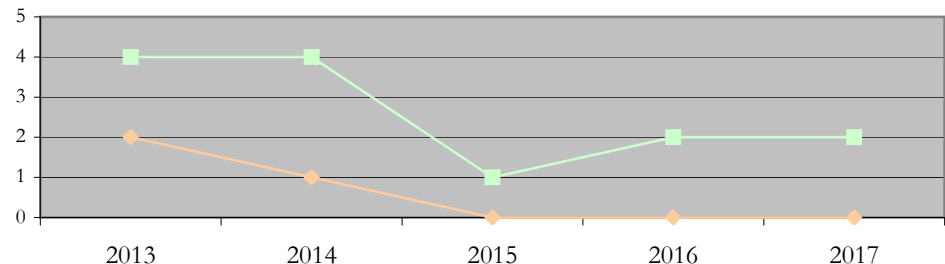
Admissions by Gender



New Enrollments by Race/Ethnicity



New Enrollments by Gender



Notes: 1) URM stands for Under-Represented Minority and includes American Indian or Alaska Native; Black or African-American; Hispanic / Latino race/ethnicity groups
2) Individual URM groups, Native Hawaiian Pacific Islander, Two or More Races, and Other race/ethnicity categories left off these charts due to relatively low numbers

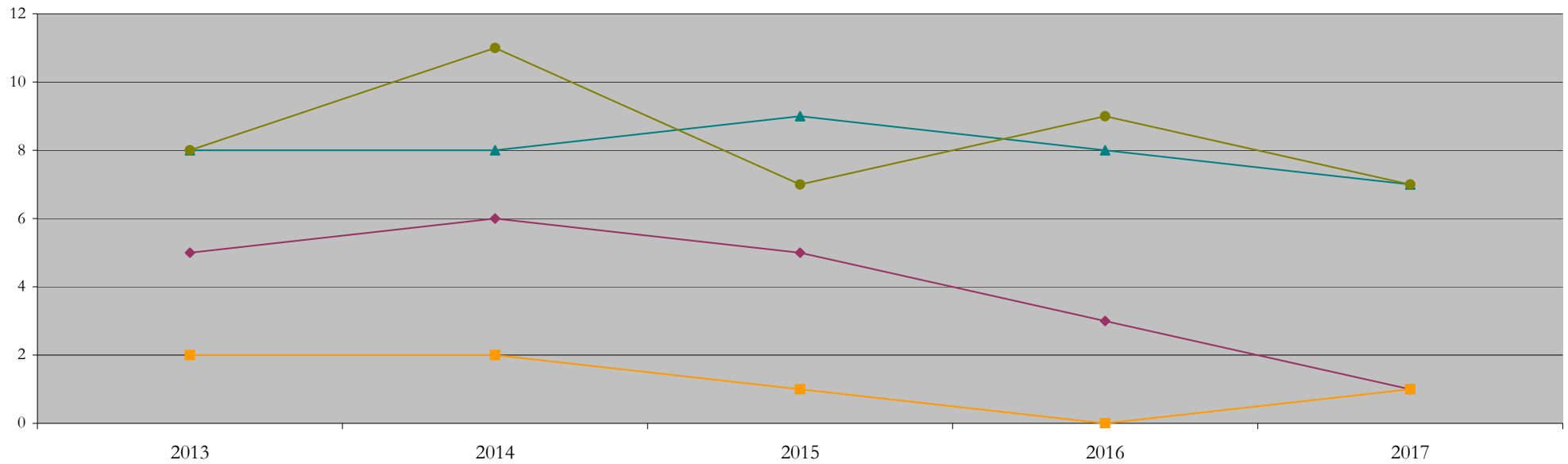
Total Enrollment (includes secondary curriculum)

by Race/Ethnicity

Health_Policy_and_Administration_PHD [20FS1638PHD]

Fall 2013 through Fall 2017

Fall Semester Year	Total	Under Represented Minorities (URM)																		
		American Indian or Alaska Native		Black or African American		Hispanic / Latino		URM Total		Asian		Native Hawaiian or Pacific Islander		White		Two or More Races		International		Race/Eth Not Reported
		Count	%	Count	%	Count	%	Count	%	Count	%	Count	%	Count	%	Count	%	Count	%	Count
2013	23	0	0.0	2	8.7	3	13.0	5	21.7	2	8.7	0	0.0	8	34.8	0	0.0	8	34.8	0
2014	27	0	0.0	3	11.1	3	11.1	6	22.2	2	7.4	0	0.0	8	29.6	0	0.0	11	40.7	0
2015	22	0	0.0	3	13.6	2	9.1	5	22.7	1	4.5	0	0.0	9	40.9	0	0.0	7	31.8	0
2016	20	0	0.0	0	0.0	3	15.0	3	15.0	0	0.0	0	0.0	8	40.0	0	0.0	9	45.0	0
2017	17	0	0.0	0	0.0	1	5.9	1	5.9	1	5.9	0	0.0	7	41.2	0	0.0	7	41.2	1



Notes: 1) URM stands for Under-Represented Minority and includes American Indian or Alaska Native; Black or African-American; Hispanic / Latino race/ethnicity groups
 2) Individual URM groups, Native Hawaiian Pacific Islander, Two or More Races, and Other race/ethnicity categories left off this chart due to relatively low numbers

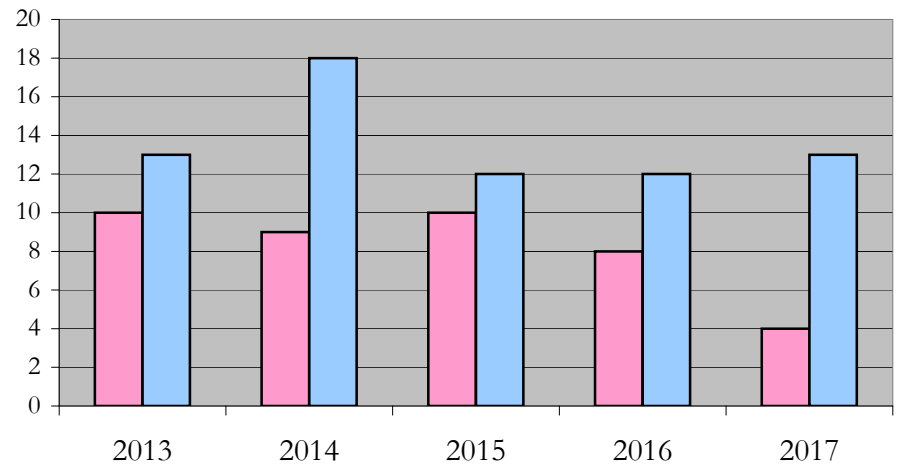
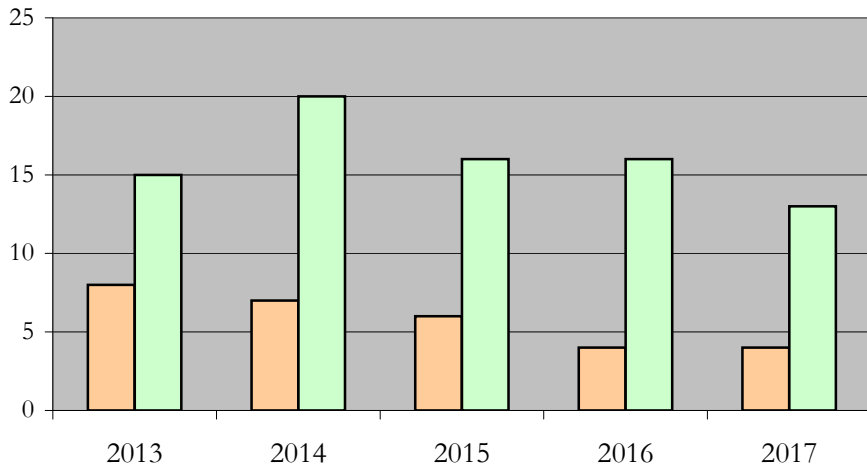
Total Enrollment (includes secondary curriculum)

by Student Type, Gender, and Enrollment Time

Health_Policy_and_Administration_PHD [20FS1638PHD]

Fall 2013 through Fall 2017

Fall Semester Year	Total	New		Continuing		Male		Female		Gender Not Reported	Part-time		Full-time	
		Count	%	Count	%	Count	%	Count	%	Count	Count	%	Count	%
2013	23	6	26.1	17	73.9	8	34.8	15	65.2	0	10	43.5	13	56.5
2014	27	5	18.5	22	81.5	7	25.9	20	74.1	0	9	33.3	18	66.7
2015	22	1	4.5	21	95.5	6	27.3	16	72.7	0	10	45.5	12	54.5
2016	20	2	10.0	18	90.0	4	20.0	16	80.0	0	8	40.0	12	60.0
2017	17	2	11.8	15	88.2	4	23.5	13	76.5	0	4	23.5	13	76.5



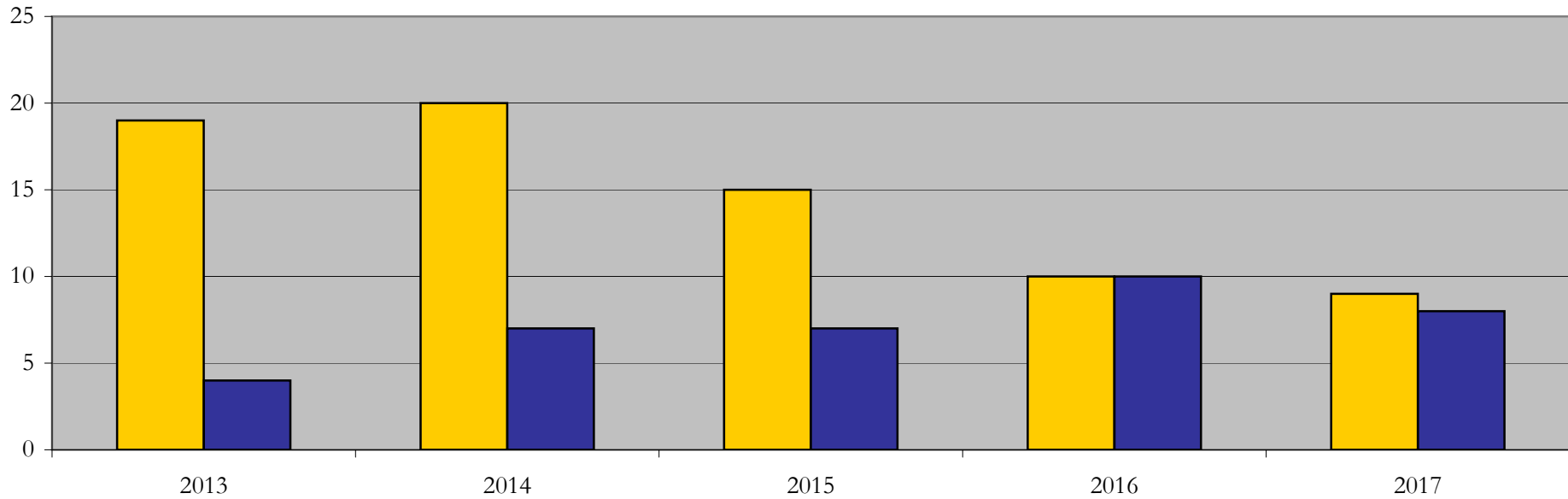
Enrollment & Degrees Conferred

by Primary/Secondary, Average Age, State Residency

Health_Policy_and_Administration_PHD [20FS1638PHD]

Fall 2013 through Fall 2017

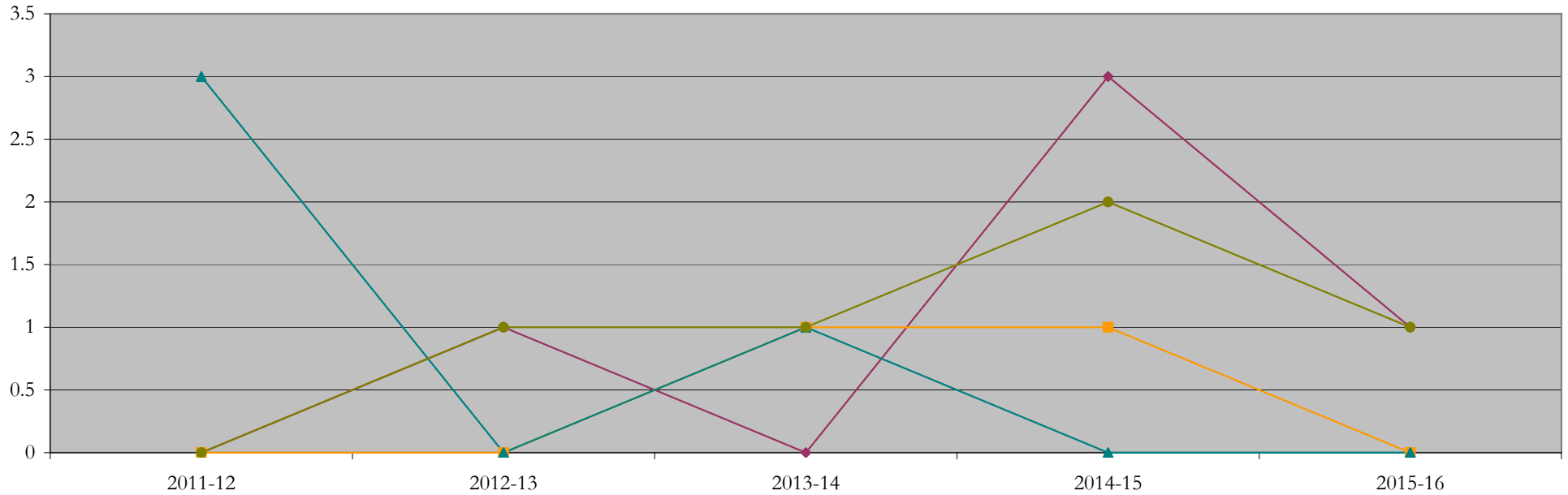
Fall Semester Year	Enrollment			Average Age			State Residency of Total Enrollment					
	Total	Primary	Secondary	Fall New Enrollment	Fall Continuing Enrollment	Academic Year Graduating Class	Residents			Non-Residents		
							Total Enrollment	New Enrollment	Continuing Enrollment	Total Enrollment	New Enrollment	Continuing Enrollment
2013	23	21	2	32	39	41	19	3	16	4	3	1
2014	27	26	1	33	38	38	20	2	18	7	3	4
2015	22	19	3	35	38	38	15	0	15	7	1	6
2016	20	19	1	27	38	38	10	0	10	10	2	8
2017	17	15	2	27	35	38	9	1	8	8	1	7



Degrees Conferred by Race/Ethnicity

Health_Policy_and_Administration_PHD [20FS1638PHD]
AY2011-12 through 2015-16

Academic Year	Total	Under Represented Minorities (URM)								Asian		Native Hawaiian or Pacific		White		Two or More Races		International		Not Reported
		American Indian or Alaska Native		Black or African American		Hispanic / Latino		URM Total		Count	%	Count	%	Count	%	Count	%	Count	%	
		Count	%	Count	%	Count	%	Count	%											
2012 - 2013	3	0	0.0	0	0.0	0	0.0	0	0.0	0	0.0	0	0.0	3	100.0	0	0.0	0	0.0	0
2013 - 2014	2	0	0.0	0	0.0	1	50.0	1	50.0	0	0.0	0	0.0	0	0.0	0	0.0	1	50.0	0
2014 - 2015	3	0	0.0	0	0.0	0	0.0	0	0.0	1	33.3	0	0.0	1	33.3	0	0.0	1	33.3	0
2015 - 2016	6	0	0.0	1	16.7	2	33.3	3	50.0	1	16.7	0	0.0	0	0.0	0	0.0	2	33.3	0
2016 - 2017	2	0	0.0	1	50.0	0	0.0	1	50.0	0	0.0	0	0.0	0	0.0	0	0.0	1	50.0	0



Notes: 1) URM stands for Under-Represented Minority and includes American Indian or Alaska Native; Black or African-American; Hispanic / Latino race/ethnicity groups
2) Individual URM groups, Native Hawaiian Pacific Islander, Two or More Races, and Other race/ethnicity categories left off this chart due to relatively low numbers

Degrees Conferred

by Gender

Health_Policy_and_Administration_PHD [20FS1638PHD]

AY2011-12 through 2015-16

Academic Year	Total	Male		Female		Not Reported
		Count	%	Count	%	
2012 - 2013	3	1	33.3	2	66.7	0
2013 - 2014	2	0	0.0	2	100.0	0
2014 - 2015	3	2	66.7	1	33.3	0
2015 - 2016	6	2	33.3	4	66.7	0
2016 - 2017	2	0	0.0	2	100.0	0

