

Matriculation

Diversity Pipeline

Epidemiology_PHD [20FS1637PHD]

Fall 2013 through Fall 2017

Fall Semester Year	Applied					Admitted					Non-URM Admitted to Applied Yield %	URM Admitted to Applied Yield %	New Enrollment					Non-URM Enrolled to Admitted Yield %	URM Enrolled to Admitted Yield %	Total Enrollment						
	Grand Total	Non-URM Total		URM Total		Grand Total	Non-URM Total		URM Total				Grand Total	Non-URM Total		URM Total				Grand Total	Non-URM Total		URM Total			
		Count	%	Count	%		Count	%	Count	%				Count	%	Count	%				Count	%	Count	%	Count	%
2013	51	42	82.4%	9	17.6%	6	6	100.0%	0	0.0%	14.3%	0.0%	2	2	100.0%	0	0.0%	33.3%	0.0%	39	36	92.3%	3	7.7%		
2014	71	59	83.1%	12	16.9%	14	14	100.0%	0	0.0%	23.7%	0.0%	4	4	100.0%	0	0.0%	28.6%	0.0%	34	31	91.2%	3	8.8%		
2015	78	70	89.7%	8	10.3%	16	15	93.8%	1	6.3%	21.4%	12.5%	5	4	80.0%	1	20.0%	26.7%	100.0%	41	37	90.2%	4	9.8%		
2016	64	55	85.9%	9	14.1%	18	16	88.9%	2	11.1%	29.1%	22.2%	5	4	80.0%	1	20.0%	25.0%	50.0%	36	32	88.9%	4	11.1%		
2017	65	57	87.7%	8	12.3%	15	13	86.7%	2	13.3%	22.8%	25.0%	5	4	80.0%	1	20.0%	30.8%	50.0%	33	27	81.8%	6	18.2%		
Average	66	57	86.0%	9	14.0%	14	13	92.8%	1	7.2%	22.6%	10.9%	4	4	85.7%	1	14.3%	28.1%	60.0%	37	33	89.1%	4	10.9%		

Note: URM stands for Under-Represented Minority and includes American Indian or Alaska Native; Black or African-American; Hispanic / Latino race/ethnicity groups

Applications, Admission, & New Enrollment Yields

by Race/Ethnicity & Gender

Epidemiology_PHD [20FS1637PHD]

Fall 2013 through Fall 2017

	Fall Semester Year	Total	Under Represented Minorities (URM)										Race/Eth Not Reported	Male	Female												
			American Indian or Alaska Native		Black or African American		Hispanic / Latino		URM Total		Asian					Native Hawaiian or Pacific Islander		White		Two or More Races		International					
		Count	% Yield	Count	% Yield	Count	% Yield	Count	% Yield	Count	% Yield	Count	% Yield	Count	% Yield	Count	% Yield	Count	% Yield	Count	% Yield	Count	% Yield	Count	% Yield		
Applied	2013	51		0		6		3		9		5		0		13		1		23		0		11		40	
	2014	71		0		6		6		12		8		0		22		4		23		2		23		48	
	2015	78		1		2		5		8		5		0		18		1		44		2		23		54	
	2016	64		0		4		5		9		11		0		18		0		22		4		17		45	
	2017	65		0		5		3		8		13		0		19		1		24		0		16		47	
		Count	% Yield	Count	% Yield	Count	% Yield	Count	% Yield	Count	% Yield	Count	% Yield	Count	% Yield	Count	% Yield	Count	% Yield	Count	% Yield	Count	% Yield	Count	% Yield	Count	% Yield
Admitted	2013	6	11.8	0	0.0	0	0.0	0	0.0	0	0.0	2	40.0	0	0.0	3	23.1	0	0.0	1	4.3	0		2	18.2	4	10.0
	2014	14	19.7	0	0.0	0	0.0	0	0.0	0	0.0	2	25.0	0	0.0	10	45.5	1	25.0	1	4.3	0		6	26.1	8	16.7
	2015	16	20.5	0	0.0	0	0.0	1	20.0	1	12.5	0	0.0	0	0.0	7	38.9	0	0.0	7	15.9	1		2	8.7	14	25.9
	2016	18	28.1	0	0.0	0	0.0	2	40.0	2	22.2	2	18.2	0	0.0	11	61.1	0	0.0	2	9.1	1		1	5.9	17	37.8
	2017	15	23.1	0	0.0	2	40.0	0	0.0	2	25.0	4	30.8	0	0.0	7	36.8	0	0.0	2	8.3	0		3	18.8	12	25.5
		Count	% Yield	Count	% Yield	Count	% Yield	Count	% Yield	Count	% Yield	Count	% Yield	Count	% Yield	Count	% Yield	Count	% Yield	Count	% Yield	Count	% Yield	Count	% Yield	Count	% Yield
Enrolled	2013	2	33.3	0	0.0	0	0.0	0	0.0	0	0.0	1	50.0	0	0.0	1	33.3	0	0.0	0	0.0	0		1	50.0	1	25.0
	2014	4	28.6	0	0.0	0	0.0	0	0.0	0	0.0	0	0.0	0	0.0	3	30.0	1	100.0	0	0.0	0		0	0.0	4	50.0
	2015	5	31.3	0	0.0	0	0.0	1	100.0	1	100.0	0	0.0	0	0.0	3	42.9	0	0.0	1	14.3	0		0	0.0	5	35.7
	2016	5	27.8	0	0.0	0	0.0	1	50.0	1	50.0	1	50.0	0	0.0	2	18.2	0	0.0	1	50.0	0		1	100.0	4	23.5
	2017	5	33.3	0	0.0	1	50.0	0	0.0	1	50.0	2	50.0	0	0.0	2	28.6	0	0.0	0	0.0	0		1	33.3	4	33.3

Notes:

- 1) URM stands for Under-Represented Minority and includes American Indian or Alaska Native; Black or African-American; Hispanic / Latino race/ethnicity groups
- 2) Unreported Gender identification is not shown; Male and Female total may not match Total
- 3) In rare situations, the "% Yield" columns may be greater than 100. There are three potential reasons for this:
 - a) Students that received Graduate College approved transfers may not have an admission record for the program that they enrolled into.
 - b) Students with a secondary curriculum enrollment may not have an admission record for that secondary program.
 - c) Students who were newly enrolled in the summer term prior to the fall were added to the fall new enrollment totals.

Applications, Admission, & New Enrollment Yields, cont.

by Race/Ethnicity & Gender

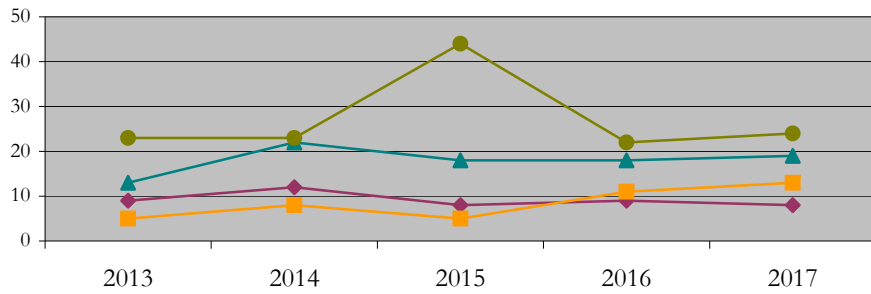
Epidemiology_PHD [20FS1637PHD]

Fall 2013 through Fall 2017

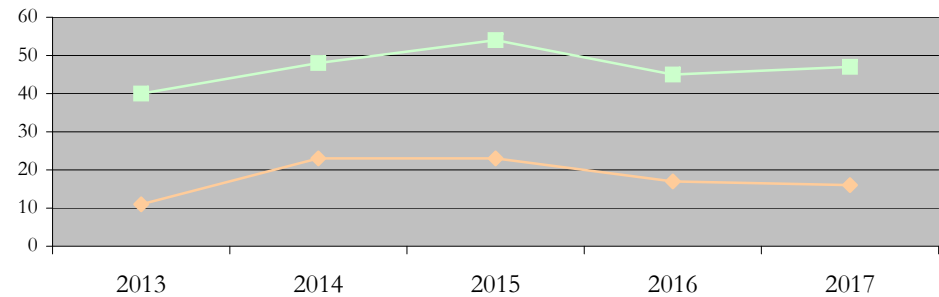
URM Total Asian White International

Male Female

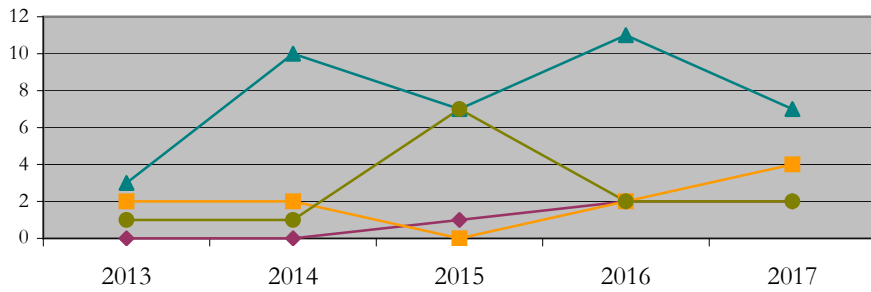
Applications by Race/Ethnicity



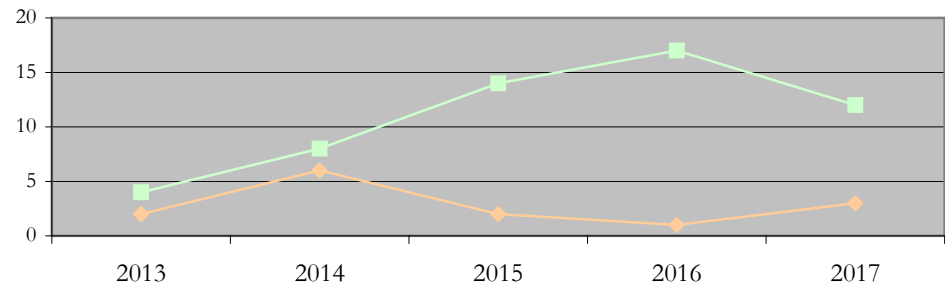
Applications by Gender



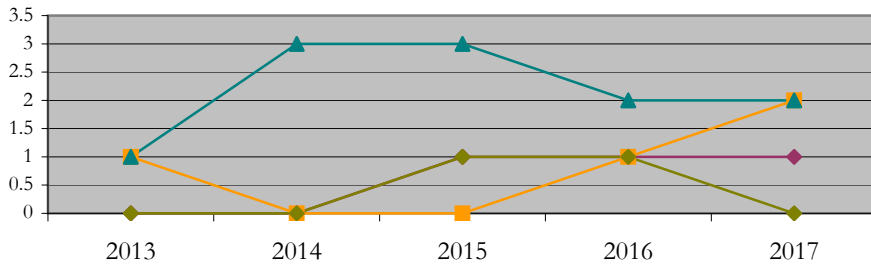
Admissions by Race/Ethnicity



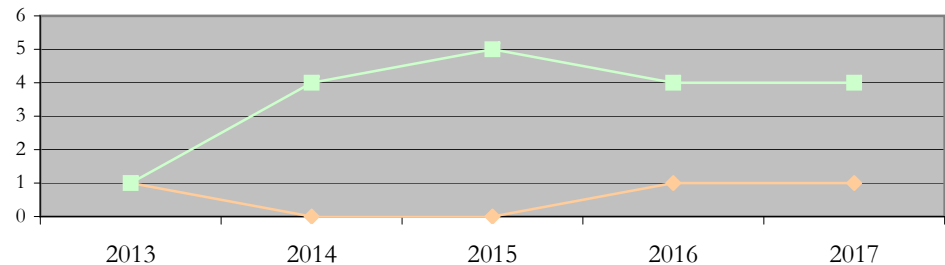
Admissions by Gender



New Enrollments by Race/Ethnicity



New Enrollments by Gender



Notes: 1) URM stands for Under-Represented Minority and includes American Indian or Alaska Native; Black or African-American; Hispanic / Latino race/ethnicity groups
 2) Individual URM groups, Native Hawaiian Pacific Islander, Two or More Races, and Other race/ethnicity categories left off these charts due to relatively low numbers

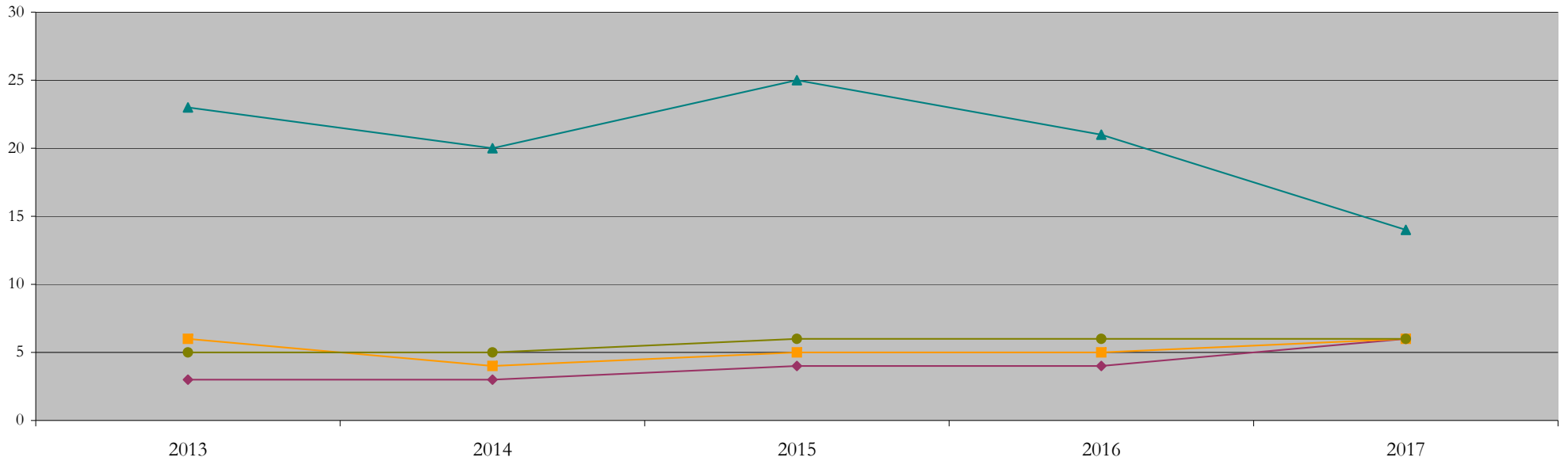
Total Enrollment (includes secondary curriculum)

by Race/Ethnicity

Epidemiology_PHD [20FS1637PHD]

Fall 2013 through Fall 2017

Fall Semester Year	Total	Under Represented Minorities (URM)																		
		American Indian or Alaska Native		Black or African American		Hispanic / Latino		URM Total		Asian		Native Hawaiian or Pacific Islander		White		Two or More Races		International		Race/Eth Not Reported
		Count	%	Count	%	Count	%	Count	%	Count	%	Count	%	Count	%	Count	%	Count	%	Count
2013	39	0	0.0	1	2.6	2	5.1	3	7.7	6	15.4	0	0.0	23	59.0	2	5.1	5	12.8	0
2014	34	0	0.0	2	5.9	1	2.9	3	8.8	4	11.8	0	0.0	20	58.8	2	5.9	5	14.7	0
2015	41	0	0.0	2	4.9	2	4.9	4	9.8	5	12.2	0	0.0	25	61.0	1	2.4	6	14.6	0
2016	36	0	0.0	1	2.8	3	8.3	4	11.1	5	13.9	0	0.0	21	58.3	0	0.0	6	16.7	0
2017	33	0	0.0	2	6.1	4	12.1	6	18.2	6	18.2	0	0.0	14	42.4	1	3.0	6	18.2	0



Notes: 1) URM stands for Under-Represented Minority and includes American Indian or Alaska Native; Black or African-American; Hispanic / Latino race/ethnicity groups
 2) Individual URM groups, Native Hawaiian Pacific Islander, Two or More Races, and Other race/ethnicity categories left off this chart due to relatively low numbers

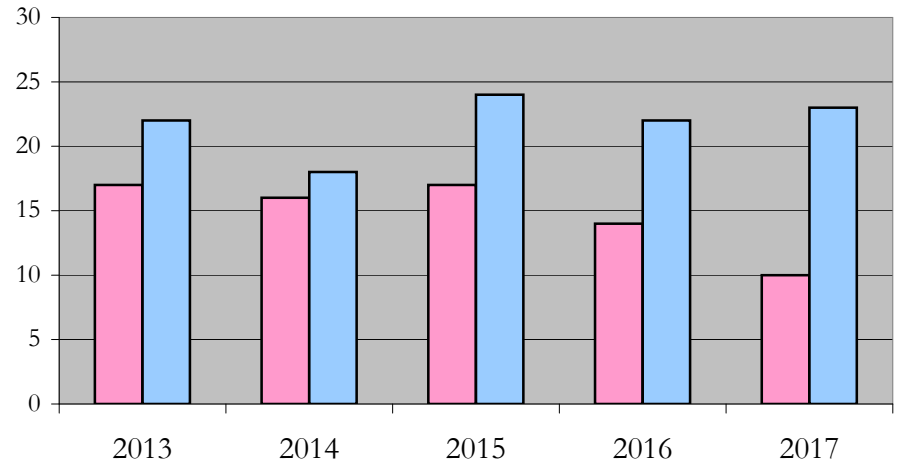
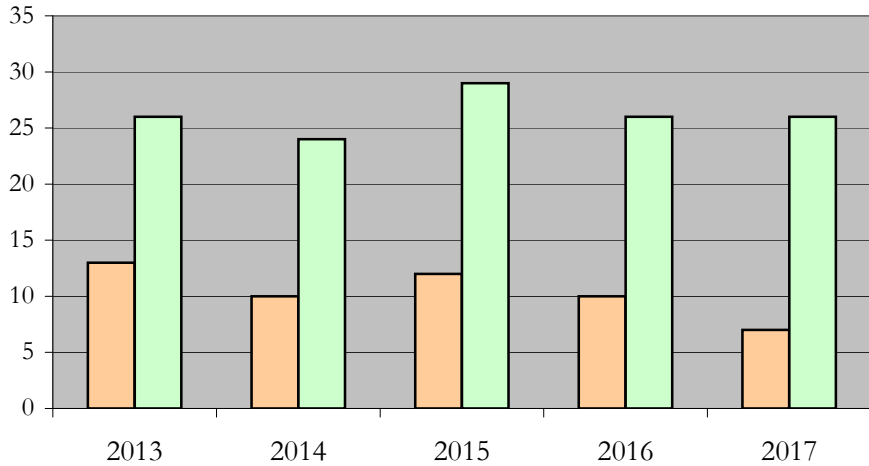
Total Enrollment (includes secondary curriculum)

by Student Type, Gender, and Enrollment Time

Epidemiology_PHD [20FS1637PHD]

Fall 2013 through Fall 2017

Fall Semester Year	Total	New		Continuing		Male		Female		Gender Not Reported	Part-time		Full-time	
		Count	%	Count	%	Count	%	Count	%	Count	Count	%	Count	%
2013	39	2	5.1	37	94.9	13	33.3	26	66.7	0	17	43.6	22	56.4
2014	34	4	11.8	30	88.2	10	29.4	24	70.6	0	16	47.1	18	52.9
2015	41	5	12.2	36	87.8	12	29.3	29	70.7	0	17	41.5	24	58.5
2016	36	5	13.9	31	86.1	10	27.8	26	72.2	0	14	38.9	22	61.1
2017	33	5	15.2	28	84.8	7	21.2	26	78.8	0	10	30.3	23	69.7



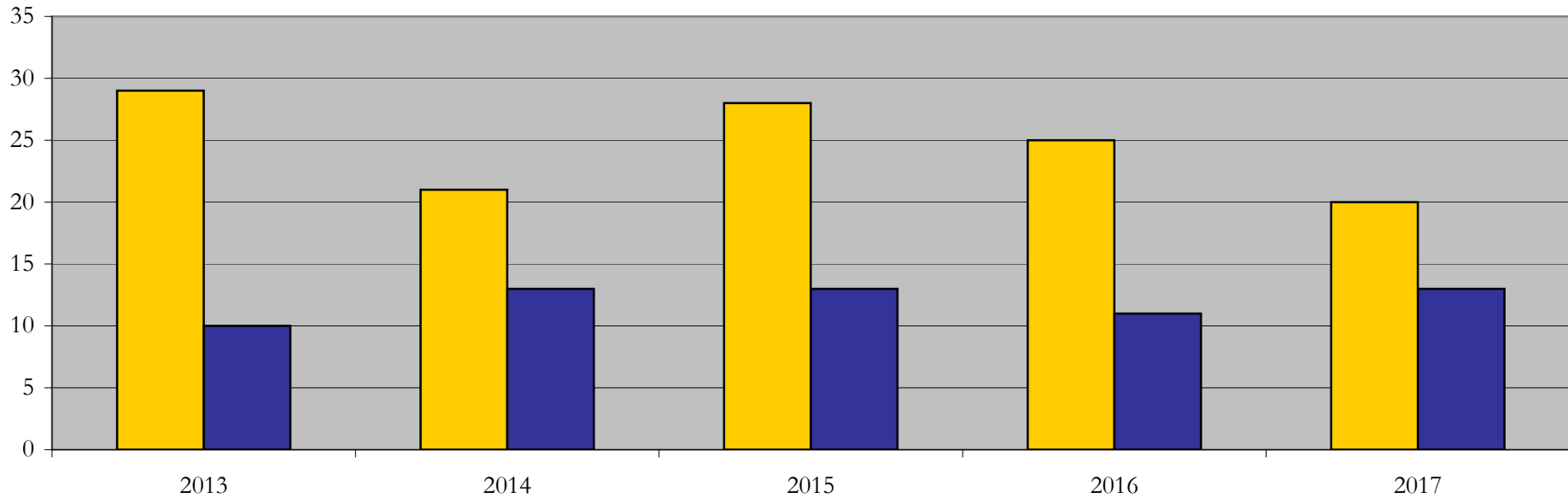
Enrollment & Degrees Conferred

by Primary/Secondary, Average Age, State Residency

Epidemiology_PHD [20FS1637PHD]

Fall 2013 through Fall 2017

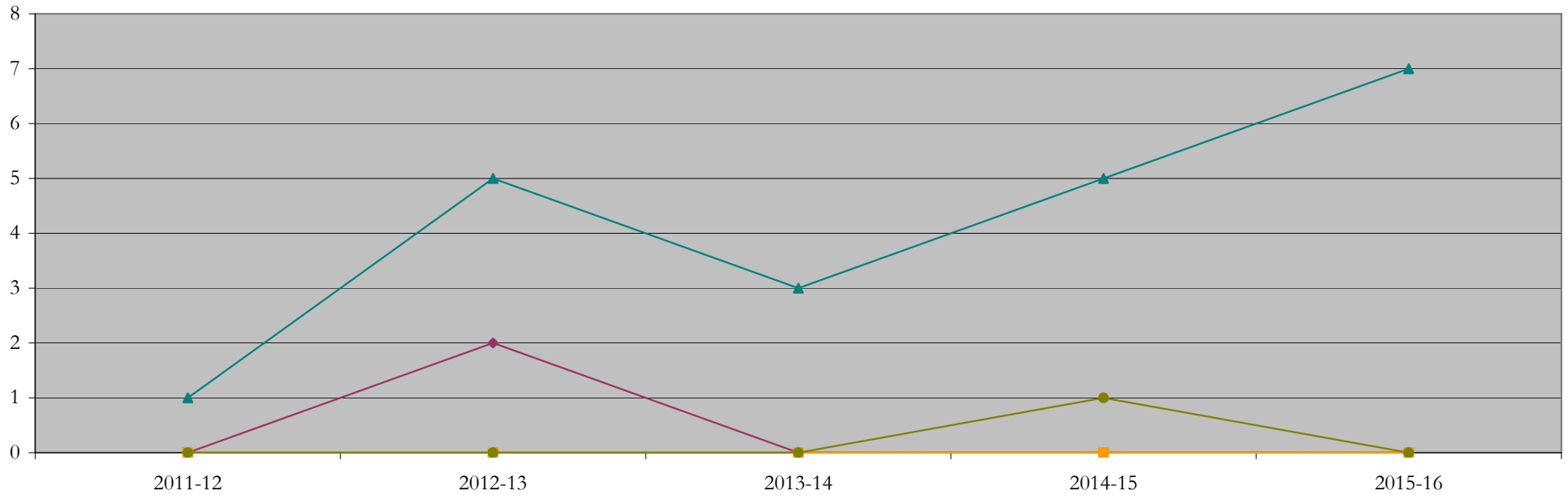
Fall Semester Year	Enrollment			Average Age			State Residency of Total Enrollment					
	Total	Primary	Secondary	Fall New Enrollment	Fall Continuing Enrollment	Academic Year Graduating Class	Residents			Non-Residents		
							Total Enrollment	New Enrollment	Continuing Enrollment	Total Enrollment	New Enrollment	Continuing Enrollment
2013	39	39	0	26	35	51	29	2	27	10	0	10
2014	34	34	0	29	34	39	21	3	18	13	1	12
2015	41	41	0	36	34	29	28	3	25	13	2	11
2016	36	36	0	30	35	35	25	3	22	11	2	9
2017	33	33	0	29	35	35	20	3	17	13	2	11



Degrees Conferred by Race/Ethnicity

Epidemiology_PHD [20FS1637PHD]
AY2011-12 through 2015-16

Academic Year	Total	Under Represented Minorities (URM)								Asian		Native Hawaiian or Pacific		White		Two or More Races		International		Not Reported
		American Indian or Alaska Native		Black or African American		Hispanic / Latino		URM Total		Count	%	Count	%	Count	%	Count	%	Count	%	
		Count	%	Count	%	Count	%	Count	%											
2012 - 2013	1	0	0.0	0	0.0	0	0.0	0	0.0	0	0.0	0	0.0	1	100.0	0	0.0	0	0.0	0
2013 - 2014	7	0	0.0	0	0.0	2	28.6	2	28.6	0	0.0	0	0.0	5	71.4	0	0.0	0	0.0	0
2014 - 2015	3	0	0.0	0	0.0	0	0.0	0	0.0	0	0.0	0	0.0	3	100.0	0	0.0	0	0.0	0
2015 - 2016	6	0	0.0	0	0.0	0	0.0	0	0.0	0	0.0	0	0.0	5	83.3	0	0.0	1	16.7	0
2016 - 2017	8	0	0.0	0	0.0	0	0.0	0	0.0	0	0.0	0	0.0	7	87.5	1	12.5	0	0.0	0



Notes: 1) URM stands for Under-Represented Minority and includes American Indian or Alaska Native; Black or African-American; Hispanic / Latino race/ethnicity groups
2) Individual URM groups, Native Hawaiian Pacific Islander, Two or More Races, and Other race/ethnicity categories left off this chart due to relatively low numbers

Degrees Conferred

by Gender

Epidemiology_PHD [20FS1637PHD]

AY2011-12 through 2015-16

Academic Year	Total	Male		Female		Not Reported
		Count	%	Count	%	
2012 - 2013	1	0	0.0	1	100.0	0
2013 - 2014	7	3	42.9	4	57.1	0
2014 - 2015	3	0	0.0	3	100.0	0
2015 - 2016	6	3	50.0	3	50.0	0
2016 - 2017	8	4	50.0	4	50.0	0

