

# Matriculation

## Diversity Pipeline

Pharmacognosy\_PHD [20FS1563PHD]

Fall 2014 - Fall 2018

Fall Semester Year	Applied					Admitted					Non-URM Admitted to Applied Yield %	URM Admitted to Applied Yield %	New Enrollment					Non-URM Enrolled to Admitted Yield %	URM Enrolled to Admitted Yield %	Total Enrollment				
	Grand Total	Non-URM Total		URM Total		Grand Total	Non-URM Total		URM Total				Grand Total	Non-URM Total		URM Total				Grand Total	Non-URM Total		URM Total	
		Count	%	Count	%		Count	%	Count	%				Count	%	Count	%				Count	%	Count	%
2014	55	51	92.7%	4	7.3%	10	9	90.0%	1	10.0%	17.6%	25.0%	6	6	100.0%	0	0.0%	66.7%	0.0%	37	32	86.5%	5	13.5%
2015	45	40	88.9%	5	11.1%	12	12	100.0%	0	0.0%	30.0%	0.0%	8	8	100.0%	0	0.0%	66.7%	0.0%	36	32	88.9%	4	11.1%
2016	44	43	97.7%	1	2.3%	11	11	100.0%	0	0.0%	25.6%	0.0%	6	6	100.0%	0	0.0%	54.5%	0.0%	39	36	92.3%	3	7.7%
2017	45	38	84.4%	7	15.6%	10	9	90.0%	1	10.0%	23.7%	14.3%	4	3	75.0%	1	25.0%	33.3%	100.0%	39	36	92.3%	3	7.7%
2018	32	29	90.6%	3	9.4%	10	8	80.0%	2	20.0%	27.6%	66.7%	5	4	80.0%	1	20.0%	50.0%	50.0%	36	31	86.1%	5	13.9%
<b>Average</b>	<b>44</b>	<b>40</b>	<b>91.0%</b>	<b>4</b>	<b>9.0%</b>	<b>11</b>	<b>10</b>	<b>92.5%</b>	<b>1</b>	<b>7.5%</b>	<b>24.4%</b>	<b>20.0%</b>	<b>6</b>	<b>5</b>	<b>93.1%</b>	<b>0</b>	<b>6.9%</b>	<b>55.1%</b>	<b>50.0%</b>	<b>37</b>	<b>33</b>	<b>89.3%</b>	<b>4</b>	<b>10.7%</b>

**Note:** URM stands for Under-Represented Minority and includes American Indian or Alaska Native; Black or African-American; Hispanic / Latino race/ethnicity groups

# Applications, Admission, & New Enrollment Yields

## by Race/Ethnicity & Gender

Pharmacognosy\_PHD [20FS1563PHD]

Fall 2014 - Fall 2018

	Fall Semester Year	Total		Under Represented Minorities (URM)										Race/Eth Not Reported		Male		Female									
				American Indian or Alaska Native		Black or African American		Hispanic / Latino		URM Total		Asian								Native Hawaiian or Pacific Islander		White		Two or More Races		International	
		Count	% Yield	Count	% Yield	Count	% Yield	Count	% Yield	Count	% Yield	Count	% Yield	Count	% Yield	Count	% Yield	Count	% Yield	Count	% Yield	Count	% Yield	Count	% Yield		
Applied	2014	55		0		2		2		4		2		0		12		0		35		2		24		31	
	2015	45		1		3		1		5		6		0		8		2		23		1		18		27	
	2016	44		0		0		1		1		4		0		19		0		18		2		21		23	
	2017	45		0		4		3		7		2		0		12		0		24		0		20		25	
	2018	32		0		0		3		3		1		0		2		1		17		8		15		17	
Admitted	2014	10	18.2	0	0.0	0	0.0	1	50.0	1	25.0	1	50.0	0	0.0	7	58.3	0	0.0	1	2.9	0		4	16.7	6	19.4
	2015	12	26.7	0	0.0	0	0.0	0	0.0	0	0.0	1	16.7	0	0.0	4	50.0	1	50.0	6	26.1	0		5	27.8	7	25.9
	2016	11	25.0	0	0.0	0	0.0	0	0.0	0	0.0	2	50.0	0	0.0	9	47.4	0	0.0	0	0.0	0		8	38.1	3	13.0
	2017	10	22.2	0	0.0	0	0.0	1	33.3	1	14.3	0	0.0	0	0.0	9	75.0	0	0.0	0	0.0	0		6	30.0	4	16.0
	2018	10	31.3	0	0.0	0	0.0	2	66.7	2	66.7	1	100.0	0	0.0	2	100.0	0	0.0	1	5.9	4		6	40.0	4	23.5
Enrolled	2014	6	60.0	0	0.0	0	0.0	0	0.0	0	0.0	1	100.0	0	0.0	4	57.1	0	0.0	1	100.0	0		3	75.0	3	50.0
	2015	8	66.7	0	0.0	0	0.0	0	0.0	0	0.0	1	100.0	0	0.0	3	75.0	0	0.0	4	66.7	0		3	60.0	5	71.4
	2016	6	54.5	0	0.0	0	0.0	0	0.0	0	0.0	1	50.0	0	0.0	5	55.6	0	0.0	0	0.0	0		5	62.5	1	33.3
	2017	4	40.0	0	0.0	0	0.0	1	100.0	1	100.0	0	0.0	0	0.0	3	33.3	0	0.0	0	0.0	0		1	16.7	3	75.0
	2018	5	50.0	0	0.0	0	0.0	1	50.0	1	50.0	1	100.0	0	0.0	2	100.0	0	0.0	1	100.0	0		3	50.0	2	50.0

**Notes:**

- 1) URM stands for Under-Represented Minority and includes American Indian or Alaska Native; Black or African-American; Hispanic / Latino race/ethnicity groups
- 2) Unreported Gender identification is not shown; Male and Female total may not match Total
- 3) In rare situations, the "% Yield" columns may be greater than 100. There are three potential reasons for this:
  - a) Students that received Graduate College approved transfers may not have an admission record for the program that they enrolled into.
  - b) Students with a secondary curriculum enrollment may not have an admission record for that secondary program.
  - c) Students who were newly enrolled in the summer term prior to the fall were added to the fall new enrollment totals.

# Applications, Admission, & New Enrollment Yields, cont. by Race/Ethnicity & Gender

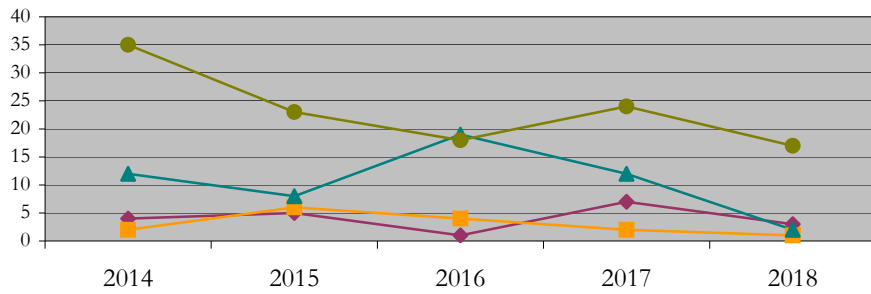
Pharmacognosy\_PHD [20FS1563PHD]

Fall 2014 - Fall 2018

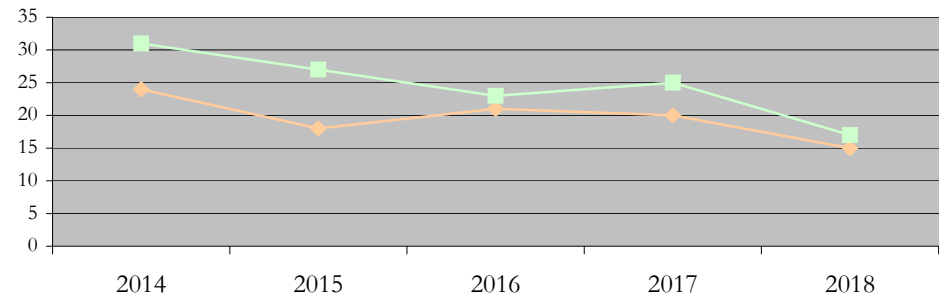
URM Total Asian White International

Male Female

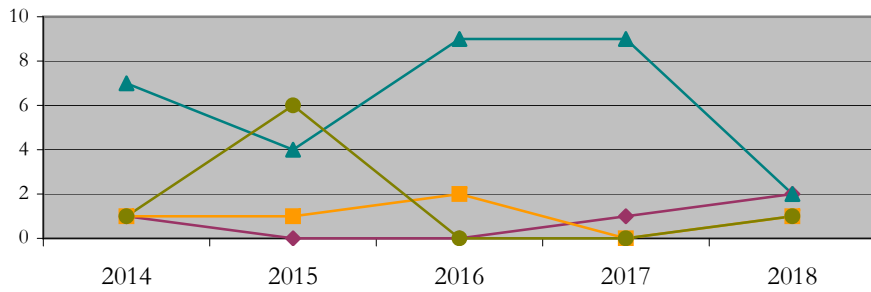
Applications by Race/Ethnicity



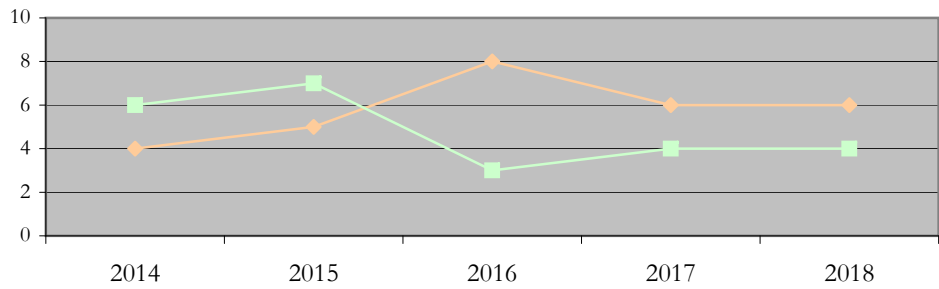
Applications by Gender



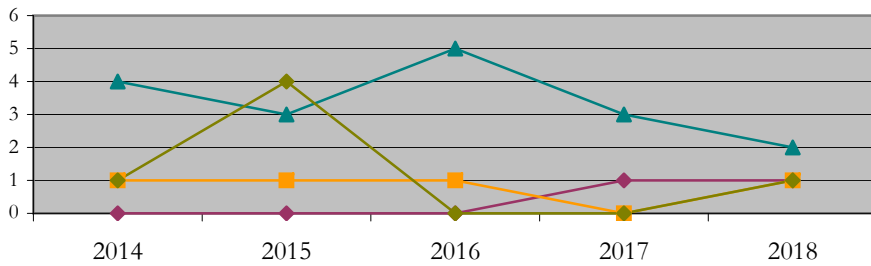
Admissions by Race/Ethnicity



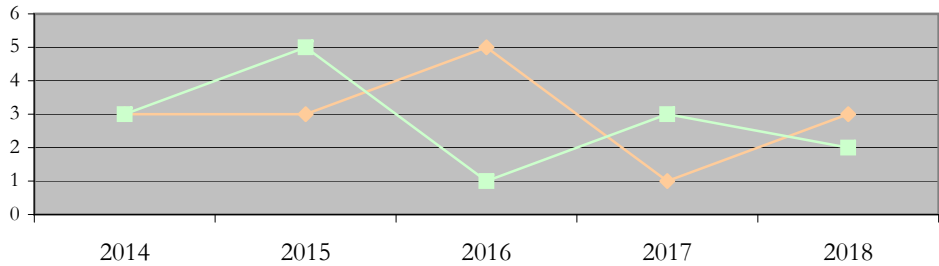
Admissions by Gender



New Enrollments by Race/Ethnicity



New Enrollments by Gender



**Notes:** 1) URM stands for Under-Represented Minority and includes American Indian or Alaska Native; Black or African-American; Hispanic / Latino race/ethnicity groups  
2) Individual URM groups, Native Hawaiian Pacific Islander, Two or More Races, and Other race/ethnicity categories left off these charts due to relatively low numbers

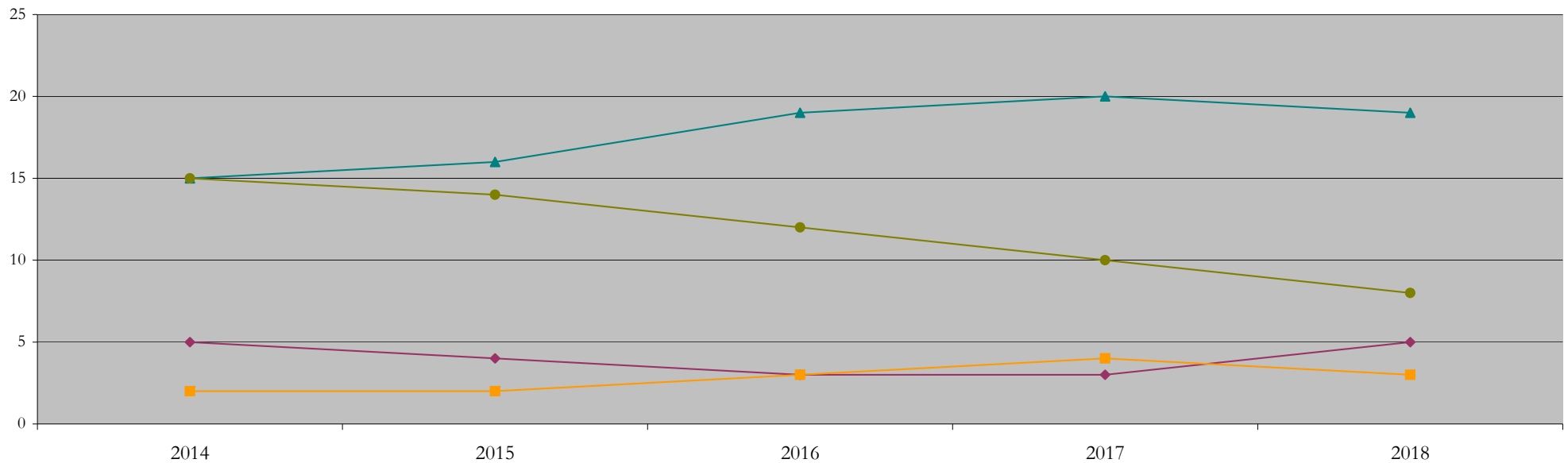
## Total Enrollment (includes secondary curriculum)

### by Race/Ethnicity

Pharmacognosy\_PHD [20FS1563PHD]

Fall 2014 - Fall 2018

Fall Semester Year	Total	Under Represented Minorities (URM)										Asian	Native Hawaiian or Pacific Islander	White	Two or More Races	International	Race/Eth Not Reported			
		American Indian or Alaska Native		Black or African American		Hispanic / Latino		URM Total												
		Count	%	Count	%	Count	%	Count	%											
2014	37	0	0.0	3	8.1	2	5.4	5	13.5	2	5.4	0	0.0	15	40.5	0	0.0	15	40.5	0
2015	36	0	0.0	3	8.3	1	2.8	4	11.1	2	5.6	0	0.0	16	44.4	0	0.0	14	38.9	0
2016	39	0	0.0	2	5.1	1	2.6	3	7.7	3	7.7	0	0.0	19	48.7	2	5.1	12	30.8	0
2017	39	0	0.0	1	2.6	2	5.1	3	7.7	4	10.3	0	0.0	20	51.3	2	5.1	10	25.6	0
2018	36	0	0.0	1	2.8	4	11.1	5	13.9	3	8.3	0	0.0	19	52.8	1	2.8	8	22.2	0



**Notes:** 1) URM stands for Under-Represented Minority and includes American Indian or Alaska Native; Black or African-American; Hispanic / Latino race/ethnicity groups  
 2) Individual URM groups, Native Hawaiian Pacific Islander, Two or More Races, and Other race/ethnicity categories left off this chart due to relatively low numbers

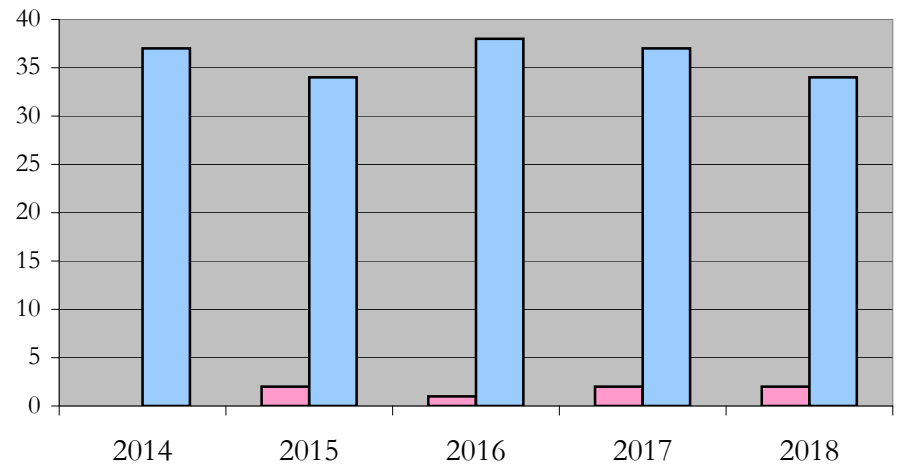
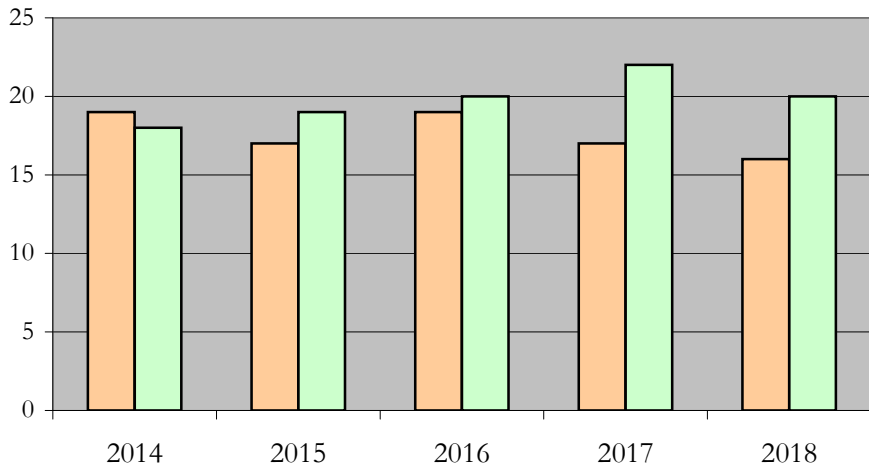
**Total Enrollment (includes secondary curriculum)**

**by Student Type, Gender, and Enrollment Time**

Pharmacognosy\_PHD [20FS1563PHD]

Fall 2014 - Fall 2018

Fall Semester Year	Total	New		Continuing		Male		Female		Gender Not Reported	Part-time		Full-time	
		Count	%	Count	%	Count	%	Count	%	Count	Count	%	Count	%
2014	37	6	16.2	31	83.8	19	51.4	18	48.6	0	0	0.0	37	100.0
2015	36	8	22.2	28	77.8	17	47.2	19	52.8	0	2	5.6	34	94.4
2016	39	6	15.4	33	84.6	19	48.7	20	51.3	0	1	2.6	38	97.4
2017	39	4	10.3	35	89.7	17	43.6	22	56.4	0	2	5.1	37	94.9
2018	36	5	13.9	31	86.1	16	44.4	20	55.6	0	2	5.6	34	94.4



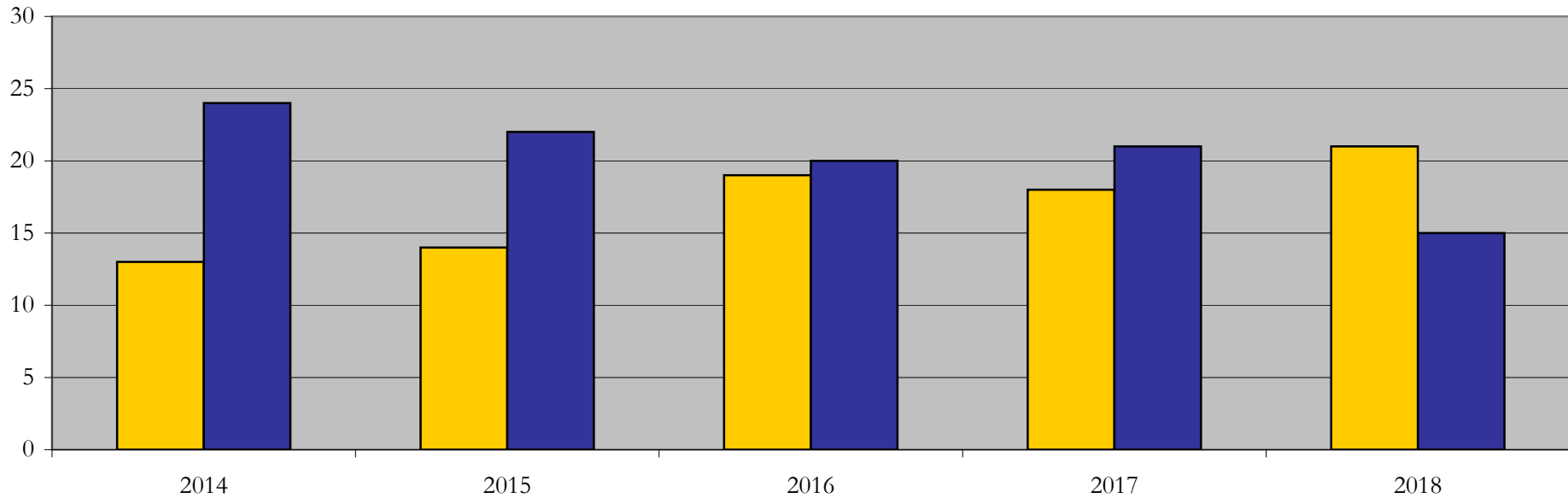
## Enrollment & Degrees Conferred

by Primary/Secondary, Average Age, State Residency

Pharmacognosy\_PHD [20FS1563PHD]

Fall 2014 - Fall 2018

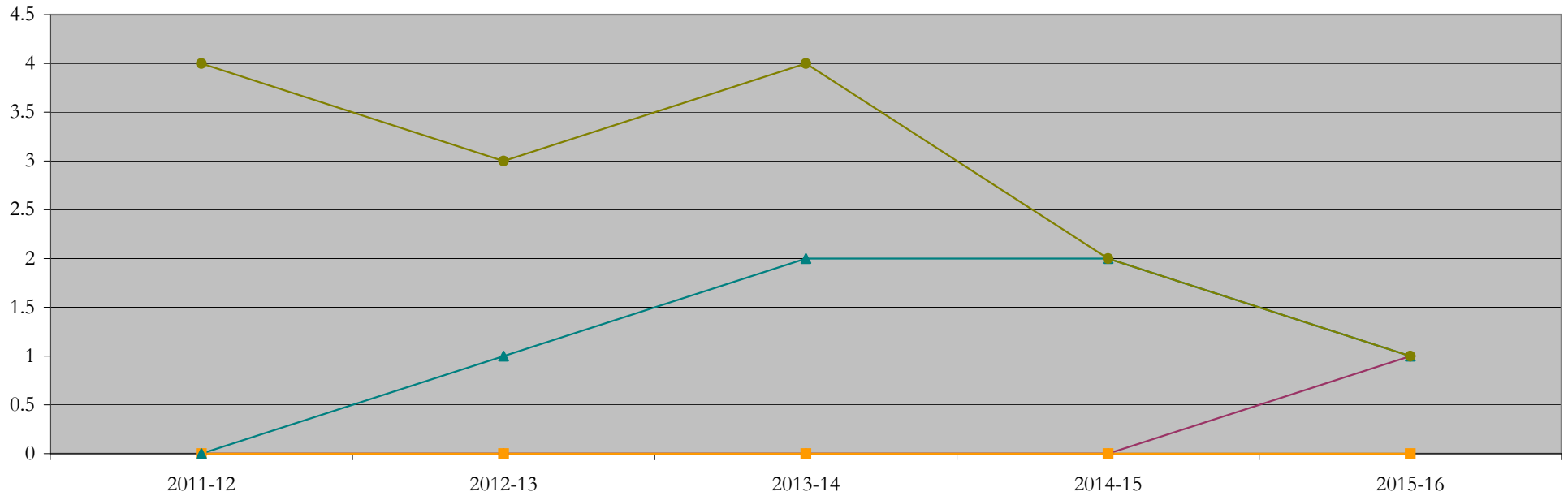
Fall Semester Year	Enrollment			Average Age			State Residency of Total Enrollment					
	Total	Primary	Secondary	Fall New Enrollment	Fall Continuing Enrollment	Academic Year Graduating Class	Residents			Non-Residents		
							Total Enrollment	New Enrollment	Continuing Enrollment	Total Enrollment	New Enrollment	Continuing Enrollment
2014	37	37	0	26	27	29	13	3	10	24	3	21
2015	36	36	0	25	28	26	14	3	11	22	5	17
2016	39	36	3	25	28	29	19	5	14	20	1	19
2017	39	36	3	23	28	31	18	1	17	21	3	18
2018	36	33	3	23	28	28	21	4	17	15	1	14



## Degrees Conferred by Race/Ethnicity

Pharmacognosy\_PHD [20FS1563PHD]  
AY2011-12 through 2015-16

Academic Year	Total	Under Represented Minorities (URM)								Asian		Native Hawaiian or Pacific		White		Two or More Races		International		Not Reported
		American Indian or Alaska Native		Black or African American		Hispanic / Latino		URM Total		Count	%	Count	%	Count	%	Count	%	Count	%	
		Count	%	Count	%	Count	%	Count	%											
2013 - 2014	4	0	0.0	0	0.0	0	0.0	0	0.0	0	0.0	0	0.0	0	0.0	0	0.0	4	100.0	0
2014 - 2015	4	0	0.0	0	0.0	0	0.0	0	0.0	0	0.0	0	0.0	1	25.0	0	0.0	3	75.0	0
2015 - 2016	6	0	0.0	0	0.0	0	0.0	0	0.0	0	0.0	0	0.0	2	33.3	0	0.0	4	66.7	0
2016 - 2017	4	0	0.0	0	0.0	0	0.0	0	0.0	0	0.0	0	0.0	2	50.0	0	0.0	2	50.0	0
2017 - 2018	3	0	0.0	1	33.3	0	0.0	1	33.3	0	0.0	0	0.0	1	33.3	0	0.0	1	33.3	0



**Notes:** 1) URM stands for Under-Represented Minority and includes American Indian or Alaska Native; Black or African-American; Hispanic / Latino race/ethnicity groups  
2) Individual URM groups, Native Hawaiian Pacific Islander, Two or More Races, and Other race/ethnicity categories left off this chart due to relatively low numbers

## Degrees Conferred

### by Gender

Pharmacognosy\_PHD [20FS1563PHD]

AY2011-12 through 2015-16

Academic Year	Total	Male		Female		Not Reported
		Count	%	Count	%	
2013 - 2014	4	3	75.0	1	25.0	0
2014 - 2015	4	2	50.0	2	50.0	0
2015 - 2016	6	3	50.0	3	50.0	0
2016 - 2017	4	3	75.0	1	25.0	0
2017 - 2018	3	2	66.7	1	33.3	0

