

Matriculation

Diversity Pipeline

Medicinal_Chemistry_PHD [20FS1454PHD]

Fall 2014 - Fall 2018

Fall Semester Year	Applied					Admitted					Non-URM Admitted to Applied Yield %	URM Admitted to Applied Yield %	New Enrollment					Non-URM Enrolled to Admitted Yield %	URM Enrolled to Admitted Yield %	Total Enrollment				
	Grand Total	Non-URM Total		URM Total		Grand Total	Non-URM Total		URM Total				Grand Total	Non-URM Total		URM Total				Grand Total	Non-URM Total		URM Total	
		Count	%	Count	%		Count	%	Count	%				Count	%	Count	%				Count	%	Count	%
	Count	%	Count	%	Count	%	Count	%	Count	%			Count	%	Count	%	Count			%	Count	%		
2014	70	61	87.1%	9	12.9%	11	9	81.8%	2	18.2%	14.8%	22.2%	5	4	80.0%	1	20.0%	44.4%	50.0%	30	27	90.0%	3	10.0%
2015	48	43	89.6%	5	10.4%	7	5	71.4%	2	28.6%	11.6%	40.0%	4	4	100.0%	0	0.0%	80.0%	0.0%	34	29	85.3%	5	14.7%
2016	60	54	90.0%	6	10.0%	12	9	75.0%	3	25.0%	16.7%	50.0%	7	5	71.4%	2	28.6%	55.6%	66.7%	35	28	80.0%	7	20.0%
2017	57	52	91.2%	5	8.8%	12	10	83.3%	2	16.7%	19.2%	40.0%	6	5	83.3%	1	16.7%	50.0%	50.0%	33	26	78.8%	7	21.2%
2018	46	45	97.8%	1	2.2%	8	8	100.0%	0	0.0%	17.8%	0.0%	3	3	100.0%	0	0.0%	37.5%	0.0%	25	19	76.0%	6	24.0%
Average	56	51	90.7%	5	9.3%	10	8	82.0%	2	18.0%	16.1%	34.6%	5	4	84.0%	1	16.0%	51.2%	44.4%	31	26	82.2%	5.6	17.8%

Note: URM stands for Under-Represented Minority and includes American Indian or Alaska Native; Black or African-American; Hispanic / Latino race/ethnicity groups

Applications, Admission, & New Enrollment Yields

by Race/Ethnicity & Gender

Medicinal_Chemistry_PHD [20FS1454PHD]

Fall 2014 - Fall 2018

	Fall Semester Year	Total	Under Represented Minorities (URM)										Race/Eth Not Reported	Male	Female												
			American Indian or Alaska Native		Black or African American		Hispanic / Latino		URM Total		Asian					Native Hawaiian or Pacific Islander		White		Two or More Races		International					
		Count	% Yield	Count	% Yield	Count	% Yield	Count	% Yield	Count	% Yield	Count	% Yield	Count	% Yield	Count	% Yield	Count	% Yield	Count	% Yield	Count	% Yield	Count	% Yield		
Applied	2014	70		0		5		4		9		3		0		15		0		40		3		38		31	
	2015	48		0		4		1		5		1		0		8		0		31		3		24		24	
	2016	60		0		2		4		6		1		0		15		0		38		0		37		23	
	2017	57		0		2		3		5		1		0		18		1		32		0		29		28	
	2018	46		0		0		1		1		2		0		3		0		29		11		25		21	
Admitted	2014	11	15.7	0	0.0	1	20.0	1	25.0	2	22.2	0	0.0	0	0.0	6	40.0	0	0.0	3	7.5	0		6	15.8	5	16.1
	2015	7	14.6	0	0.0	1	25.0	1	100.0	2	40.0	1	100.0	0	0.0	4	50.0	0	0.0	0	0.0	0		3	12.5	4	16.7
	2016	12	20.0	0	0.0	1	50.0	2	50.0	3	50.0	1	100.0	0	0.0	6	40.0	0	0.0	2	5.3	0		6	16.2	6	26.1
	2017	12	21.1	0	0.0	0	0.0	2	66.7	2	40.0	0	0.0	0	0.0	8	44.4	0	0.0	2	6.3	0		5	17.2	7	25.0
	2018	8	17.4	0	0.0	0	0.0	0	0.0	0	0.0	0	0.0	0	0.0	0	0.0	0	0.0	4	13.8	4		3	12.0	5	23.8
Enrolled	2014	5	45.5	0	0.0	1	100.0	0	0.0	1	50.0	0	0.0	0	0.0	2	33.3	0	0.0	2	66.7	0		3	50.0	2	40.0
	2015	4	57.1	0	0.0	0	0.0	0	0.0	0	0.0	1	100.0	0	0.0	3	75.0	0	0.0	0	0.0	0		1	33.3	3	75.0
	2016	7	58.3	0	0.0	0	0.0	2	100.0	2	66.7	1	100.0	0	0.0	2	33.3	0	0.0	2	100.0	0		3	50.0	4	66.7
	2017	6	50.0	0	0.0	0	0.0	1	50.0	1	50.0	0	0.0	0	0.0	3	37.5	0	0.0	2	100.0	0		2	40.0	4	57.1
	2018	3	37.5	0	0.0	0	0.0	0	0.0	0	0.0	0	0.0	0	0.0	0	0.0	0	0.0	3	75.0	0		1	33.3	2	40.0

Notes:

- 1) URM stands for Under-Represented Minority and includes American Indian or Alaska Native; Black or African-American; Hispanic / Latino race/ethnicity groups
- 2) Unreported Gender identification is not shown; Male and Female total may not match Total
- 3) In rare situations, the "% Yield" columns may be greater than 100. There are three potential reasons for this:
 - a) Students that received Graduate College approved transfers may not have an admission record for the program that they enrolled into.
 - b) Students with a secondary curriculum enrollment may not have an admission record for that secondary program.
 - c) Students who were newly enrolled in the summer term prior to the fall were added to the fall new enrollment totals.

Applications, Admission, & New Enrollment Yields, cont. by Race/Ethnicity & Gender

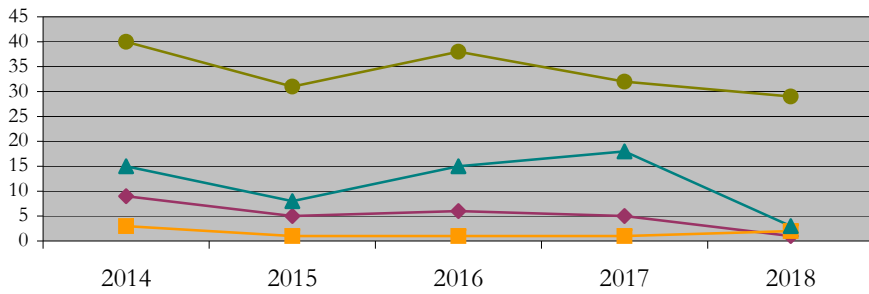
Medicinal_Chemistry_PHD [20FS1454PHD]

Fall 2014 - Fall 2018

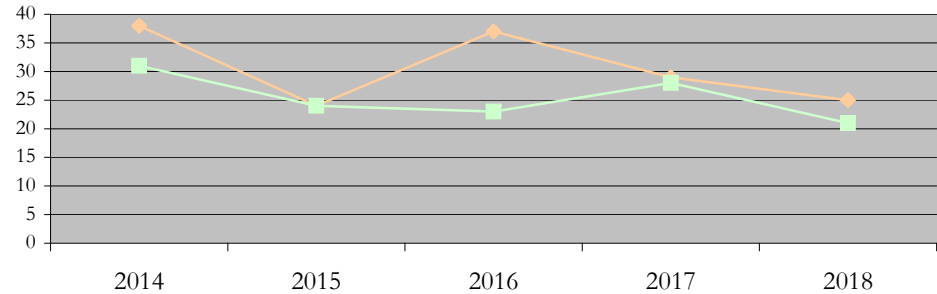
URM Total Asian White International

Male Female

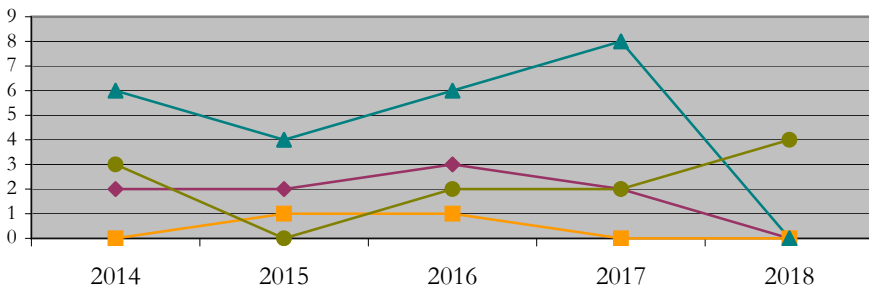
Applications by Race/Ethnicity



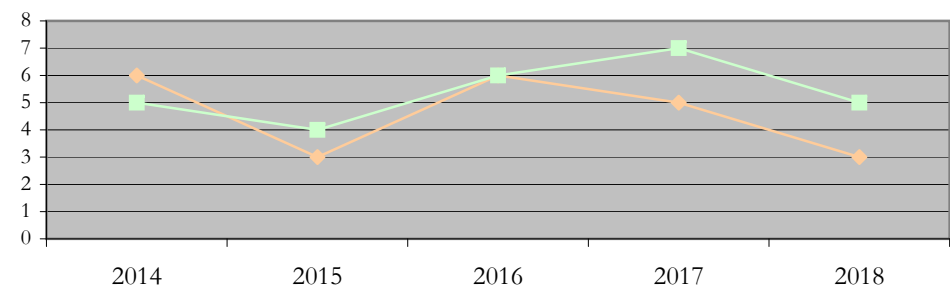
Applications by Gender



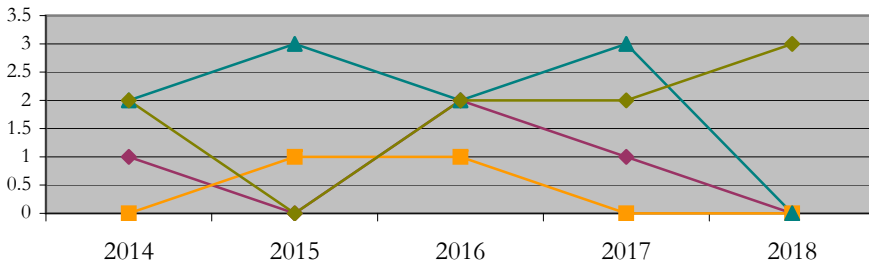
Admissions by Race/Ethnicity



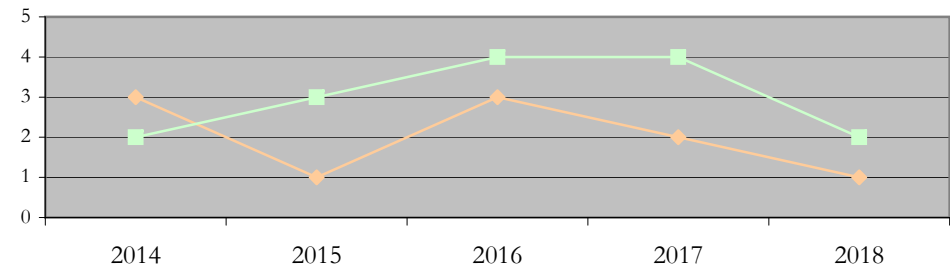
Admissions by Gender



New Enrollments by Race/Ethnicity



New Enrollments by Gender



Notes: 1) URM stands for Under-Represented Minority and includes American Indian or Alaska Native; Black or African-American; Hispanic / Latino race/ethnicity groups
2) Individual URM groups, Native Hawaiian Pacific Islander, Two or More Races, and Other race/ethnicity categories left off these charts due to relatively low numbers

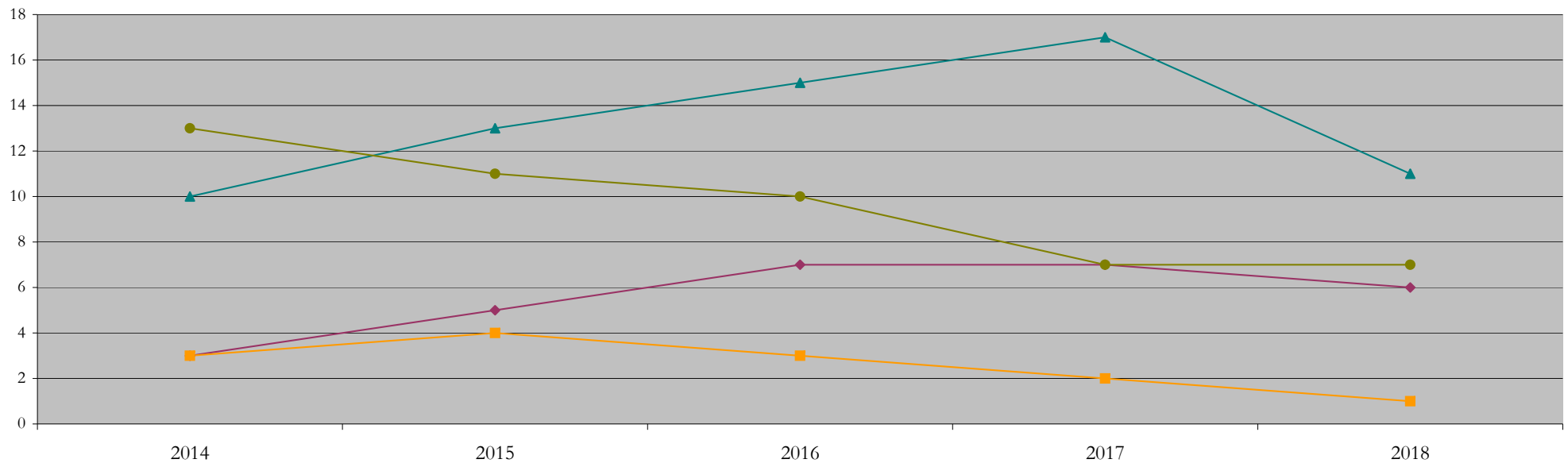
Total Enrollment (includes secondary curriculum)

by Race/Ethnicity

Medicinal_Chemistry_PHD [20FS1454PHD]

Fall 2014 - Fall 2018

Fall Semester Year	Total	Under Represented Minorities (URM)										Asian	Native Hawaiian or Pacific Islander	White		Two or More Races		International		Race/Eth Not Reported
		American Indian or Alaska Native		Black or African American		Hispanic / Latino		URM Total		Count				Count	Count	Count	Count	Count	Count	
		Count	%	Count	%	Count	%	Count	%	Count	%			Count	%	Count	%	Count	%	Count
2014	30	0	0.0	2	6.7	1	3.3	3	10.0	3	10.0	0	0.0	10	33.3	0	0.0	13	43.3	1
2015	34	0	0.0	3	8.8	2	5.9	5	14.7	4	11.8	0	0.0	13	38.2	0	0.0	11	32.4	1
2016	35	0	0.0	3	8.6	4	11.4	7	20.0	3	8.6	0	0.0	15	42.9	0	0.0	10	28.6	0
2017	33	0	0.0	2	6.1	5	15.2	7	21.2	2	6.1	0	0.0	17	51.5	0	0.0	7	21.2	0
2018	25	0	0.0	2	8.0	4	16.0	6	24.0	1	4.0	0	0.0	11	44.0	0	0.0	7	28.0	0



Notes: 1) URM stands for Under-Represented Minority and includes American Indian or Alaska Native; Black or African-American; Hispanic / Latino race/ethnicity groups
 2) Individual URM groups, Native Hawaiian Pacific Islander, Two or More Races, and Other race/ethnicity categories left off this chart due to relatively low numbers

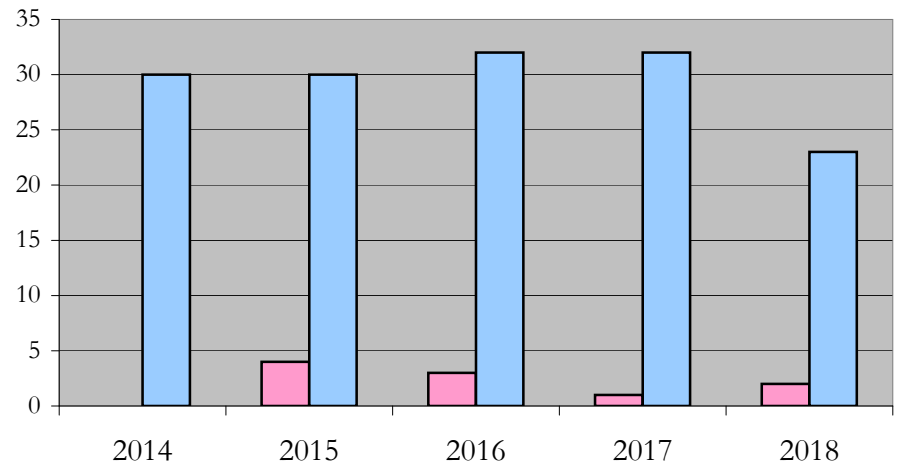
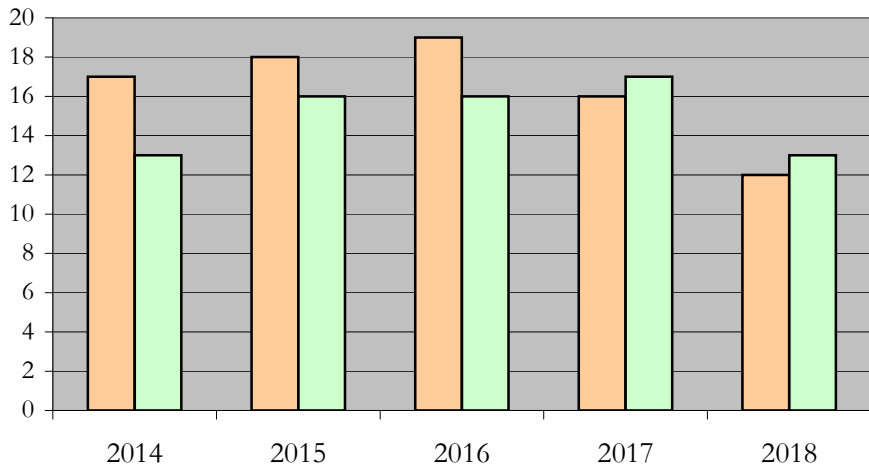
Total Enrollment (includes secondary curriculum)

by Student Type, Gender, and Enrollment Time

Medicinal_Chemistry_PHD [20FS1454PHD]

Fall 2014 - Fall 2018

Fall Semester Year	Total	New		Continuing		Male		Female		Gender Not Reported	Part-time		Full-time	
		Count	%	Count	%	Count	%	Count	%	Count	Count	%	Count	%
2014	30	5	16.7	25	83.3	17	56.7	13	43.3	0	0	0.0	30	100.0
2015	34	4	11.8	30	88.2	18	52.9	16	47.1	0	4	11.8	30	88.2
2016	35	7	20.0	28	80.0	19	54.3	16	45.7	0	3	8.6	32	91.4
2017	33	6	18.2	27	81.8	16	48.5	17	51.5	0	1	3.0	32	97.0
2018	25	3	12.0	22	88.0	12	48.0	13	52.0	0	2	8.0	23	92.0



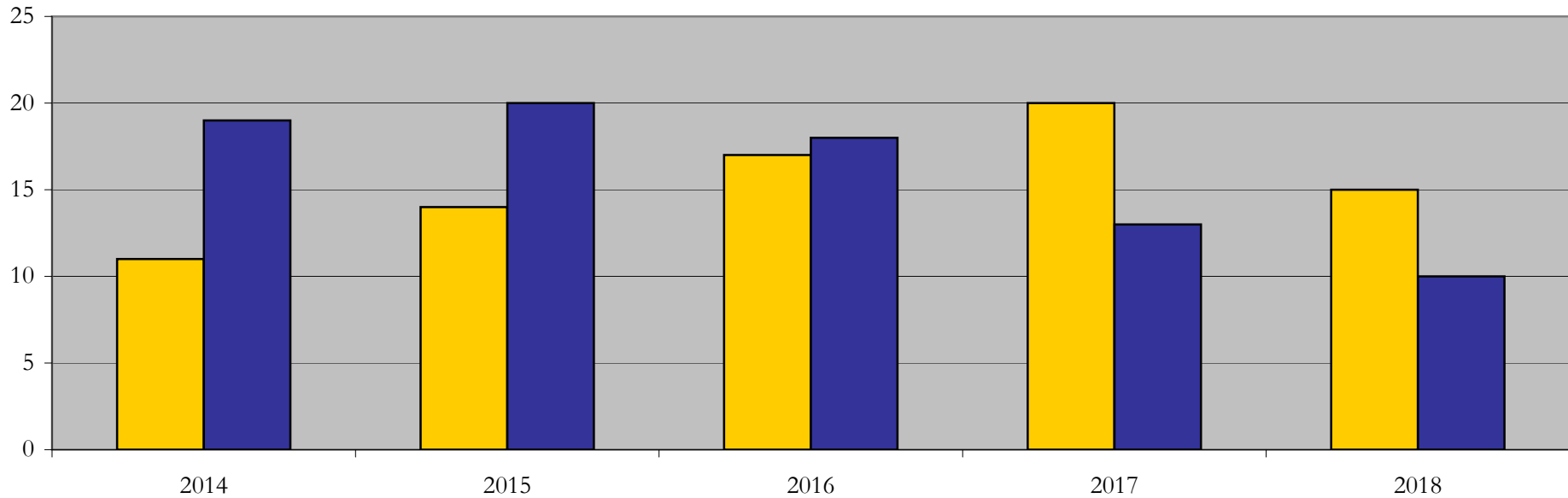
Enrollment & Degrees Conferred

by Primary/Secondary, Average Age, State Residency

Medicinal_Chemistry_PHD [20FS1454PHD]

Fall 2014 - Fall 2018

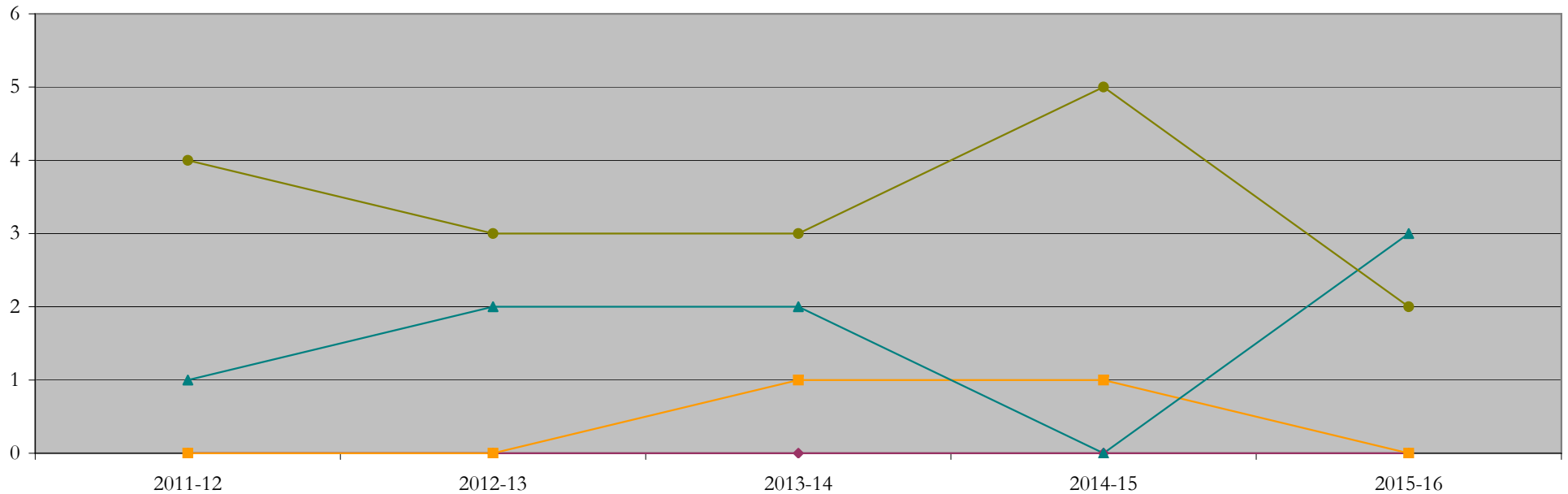
Fall Semester Year	Enrollment			Average Age			State Residency of Total Enrollment					
	Total	Primary	Secondary	Fall New Enrollment	Fall Continuing Enrollment	Academic Year Graduating Class	Residents			Non-Residents		
							Total Enrollment	New Enrollment	Continuing Enrollment	Total Enrollment	New Enrollment	Continuing Enrollment
2014	30	30	0	30	27	27	11	3	8	19	2	17
2015	34	34	0	23	28	27	14	3	11	20	1	19
2016	35	35	0	23	27	30	17	2	15	18	5	13
2017	33	32	1	25	27	28	20	4	16	13	2	11
2018	25	24	1	25	28	28	15	1	14	10	2	8



Degrees Conferred by Race/Ethnicity

Medicinal_Chemistry_PHD [20FS1454PHD]
AY2011-12 through 2015-16

Academic Year	Total	Under Represented Minorities (URM)								Asian		Native Hawaiian or Pacific		White		Two or More Races		International		Not Reported
		American Indian or Alaska Native		Black or African American		Hispanic / Latino		URM Total		Count	%	Count	%	Count	%	Count	%	Count	%	
		Count	%	Count	%	Count	%	Count	%											
2013 - 2014	5	0	0.0	0	0.0	0	0.0	0	0.0	0	0.0	0	0.0	1	20.0	0	0.0	4	80.0	0
2014 - 2015	5	0	0.0	0	0.0	0	0.0	0	0.0	0	0.0	0	0.0	2	40.0	0	0.0	3	60.0	0
2015 - 2016	6	0	0.0	0	0.0	0	0.0	0	0.0	1	16.7	0	0.0	2	33.3	0	0.0	3	50.0	0
2016 - 2017	6	0	0.0	0	0.0	0	0.0	0	0.0	1	16.7	0	0.0	0	0.0	0	0.0	5	83.3	0
2017 - 2018	5	0	0.0	0	0.0	0	0.0	0	0.0	0	0.0	0	0.0	3	60.0	0	0.0	2	40.0	0



Notes: 1) URM stands for Under-Represented Minority and includes American Indian or Alaska Native; Black or African-American; Hispanic / Latino race/ethnicity groups
2) Individual URM groups, Native Hawaiian Pacific Islander, Two or More Races, and Other race/ethnicity categories left off this chart due to relatively low numbers

Degrees Conferred

by Gender

Medicinal_Chemistry_PHD [20FS1454PHD]

AY2011-12 through 2015-16

Academic Year	Total	Male		Female		Not Reported
		Count	%	Count	%	
2013 - 2014	5	3	60.0	2	40.0	0
2014 - 2015	5	2	40.0	3	60.0	0
2015 - 2016	6	4	66.7	2	33.3	0
2016 - 2017	6	3	50.0	3	50.0	0
2017 - 2018	5	3	60.0	2	40.0	0

