

# Matriculation

## Diversity Pipeline

English\_MA [20FS0311MA]

Fall 2013 through Fall 2017

Fall Semester Year	Applied					Admitted					Non-URM Admitted to Applied Yield %	URM Admitted to Applied Yield %	New Enrollment					Non-URM Enrolled to Admitted Yield %	URM Enrolled to Admitted Yield %	Total Enrollment				
	Grand Total	Non-URM Total		URM Total		Grand Total	Non-URM Total		URM Total				Grand Total	Non-URM Total		URM Total				Grand Total	Non-URM Total		URM Total	
		Count	%	Count	%		Count	%	Count	%				Count	%	Count	%				Count	%	Count	%
	Count	%	Count	%	Count	%	Count	%	Count	%			Count	%	Count	%	Count			%	Count	%	Count	%
2013	102	92	90.2%	10	9.8%	54	48	88.9%	6	11.1%	52.2%	60.0%	16	13	81.3%	3	18.8%	27.1%	50.0%	32	28	87.5%	4	12.5%
2014	87	77	88.5%	10	11.5%	53	45	84.9%	8	15.1%	58.4%	80.0%	13	12	92.3%	1	7.7%	26.7%	12.5%	37	32	86.5%	5	13.5%
2015	48	38	79.2%	10	20.8%	31	25	80.6%	6	19.4%	65.8%	60.0%	15	12	80.0%	3	20.0%	48.0%	50.0%	37	32	86.5%	5	13.5%
2016	46	36	78.3%	10	21.7%	28	23	82.1%	5	17.9%	63.9%	50.0%	11	8	72.7%	3	27.3%	34.8%	60.0%	32	25	78.1%	7	21.9%
2017	48	33	68.8%	15	31.3%	35	23	65.7%	12	34.3%	69.7%	80.0%	11	7	63.6%	4	36.4%	30.4%	33.3%	28	20	71.4%	8	28.6%
<b>Average</b>	<b>66</b>	<b>55</b>	<b>83.4%</b>	<b>11</b>	<b>16.6%</b>	<b>40</b>	<b>33</b>	<b>81.6%</b>	<b>7</b>	<b>18.4%</b>	<b>59.4%</b>	<b>67.3%</b>	<b>13</b>	<b>10</b>	<b>78.8%</b>	<b>3</b>	<b>21.2%</b>	<b>31.7%</b>	<b>37.8%</b>	<b>33</b>	<b>27</b>	<b>82.5%</b>	<b>5.8</b>	<b>17.5%</b>

**Note:** URM stands for Under-Represented Minority and includes American Indian or Alaska Native; Black or African-American; Hispanic / Latino race/ethnicity groups

# Applications, Admission, & New Enrollment Yields

## by Race/Ethnicity & Gender

English\_MA [20FS0311MA]

Fall 2013 through Fall 2017

	Fall Semester Year	Total		Under Represented Minorities (URM)										Race/Eth Not Reported		Male		Female									
				American Indian or Alaska Native	Black or African American	Hispanic / Latino	URM Total	Asian	Native Hawaiian or Pacific Islander	White	Two or More Races	International															
		Count	% Yield	Count	% Yield	Count	% Yield	Count	% Yield	Count	% Yield	Count	% Yield	Count	% Yield	Count	% Yield	Count	% Yield	Count	% Yield	Count	% Yield				
Applied	2013	102		0		5		5		10		1		0		76		4		4		7		38		60	
	2014	87		0		3		7		10		3		0		57		3		12		2		28		59	
	2015	48		0		4		6		10		2		0		31		0		3		2		21		26	
	2016	46		0		6		4		10		2		0		26		2		3		3		18		27	
	2017	48		0		5		10		15		2		0		19		3		6		3		21		27	
Admitted	2013	54	52.9	0	0.0	3	60.0	3	60.0	6	60.0	0	0.0	0	0.0	40	52.6	3	75.0	1	25.0	4		21	55.3	30	50.0
	2014	53	60.9	0	0.0	2	66.7	6	85.7	8	80.0	2	66.7	0	0.0	35	61.4	3	100.0	5	41.7	0		22	78.6	31	52.5
	2015	31	64.6	0	0.0	2	50.0	4	66.7	6	60.0	2	100.0	0	0.0	21	67.7	0	0.0	1	33.3	1		12	57.1	19	73.1
	2016	28	60.9	0	0.0	3	50.0	2	50.0	5	50.0	1	50.0	0	0.0	19	73.1	1	50.0	1	33.3	1		12	66.7	16	59.3
	2017	35	72.9	0	0.0	4	80.0	8	80.0	12	80.0	1	50.0	0	0.0	15	78.9	2	66.7	3	50.0	2		17	81.0	18	66.7
Enrolled	2013	16	29.6	0	0.0	2	66.7	1	33.3	3	50.0	0	0.0	0	0.0	11	27.5	1	33.3	0	0.0	1		7	33.3	8	26.7
	2014	13	24.5	0	0.0	0	0.0	1	16.7	1	12.5	0	0.0	0	0.0	11	31.4	1	33.3	0	0.0	0		8	36.4	5	16.1
	2015	15	48.4	0	0.0	0	0.0	3	75.0	3	50.0	2	100.0	0	0.0	9	42.9	0	0.0	0	0.0	1		5	41.7	10	52.6
	2016	11	39.3	0	0.0	2	66.7	1	50.0	3	60.0	1	100.0	0	0.0	7	36.8	0	0.0	0	0.0	0		4	33.3	7	43.8
	2017	11	31.4	0	0.0	0	0.0	4	50.0	4	33.3	0	0.0	0	0.0	4	26.7	2	100.0	1	33.3	0		6	35.3	5	27.8

**Notes:**

- 1) URM stands for Under-Represented Minority and includes American Indian or Alaska Native; Black or African-American; Hispanic / Latino race/ethnicity groups
- 2) Unreported Gender identification is not shown; Male and Female total may not match Total
- 3) In rare situations, the "% Yield" columns may be greater than 100. There are three potential reasons for this:
  - a) Students that received Graduate College approved transfers may not have an admission record for the program that they enrolled into.
  - b) Students with a secondary curriculum enrollment may not have an admission record for that secondary program.
  - c) Students who were newly enrolled in the summer term prior to the fall were added to the fall new enrollment totals.

# Applications, Admission, & New Enrollment Yields, cont. by Race/Ethnicity & Gender

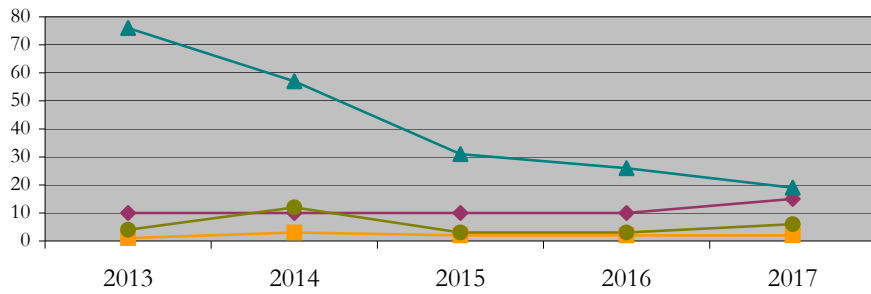
English\_MA [20FS0311MA]

Fall 2013 through Fall 2017

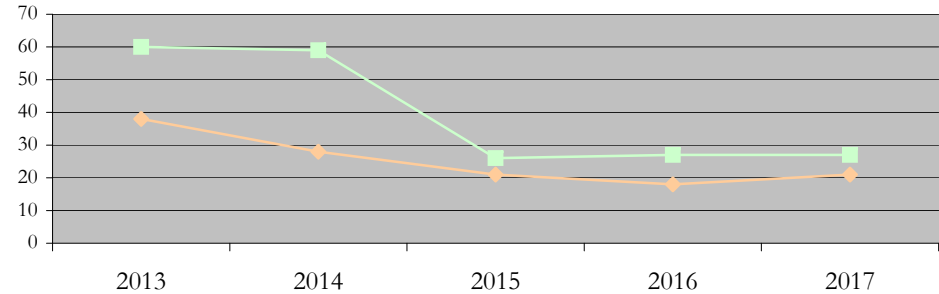
URM Total Asian White International

Male Female

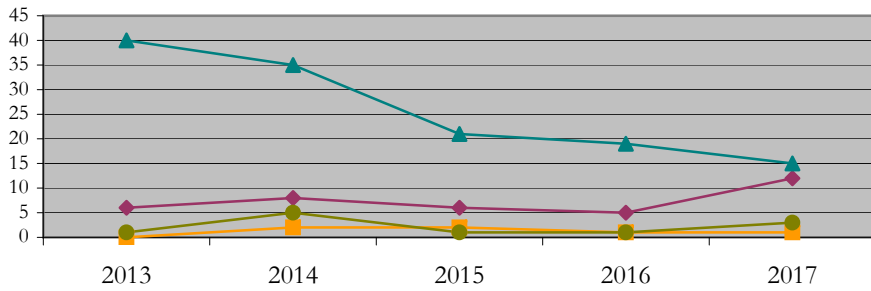
Applications by Race/Ethnicity



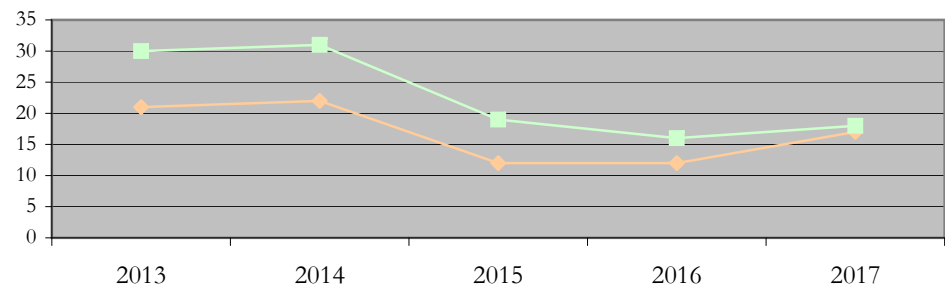
Applications by Gender



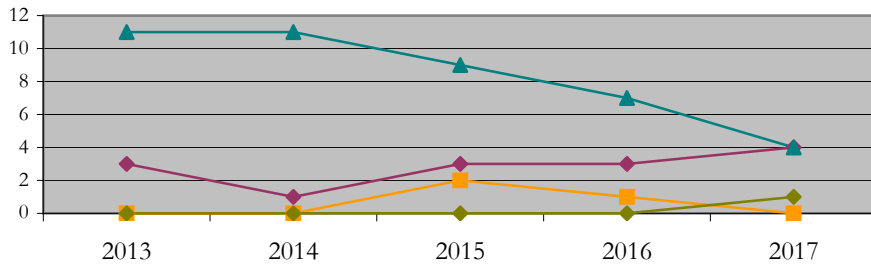
Admissions by Race/Ethnicity



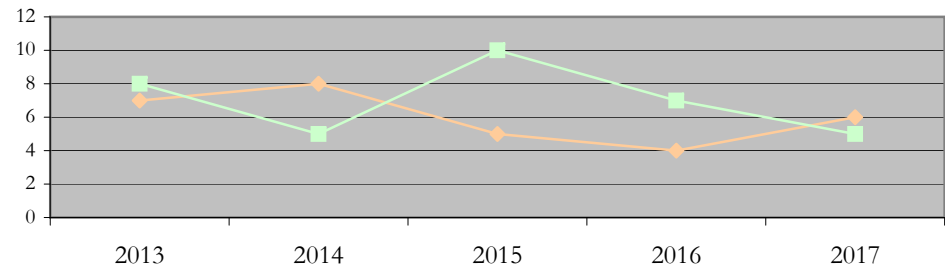
Admissions by Gender



New Enrollments by Race/Ethnicity



New Enrollments by Gender



**Notes:** 1) URM stands for Under-Represented Minority and includes American Indian or Alaska Native; Black or African-American; Hispanic / Latino race/ethnicity groups  
2) Individual URM groups, Native Hawaiian Pacific Islander, Two or More Races, and Other race/ethnicity categories left off these charts due to relatively low numbers

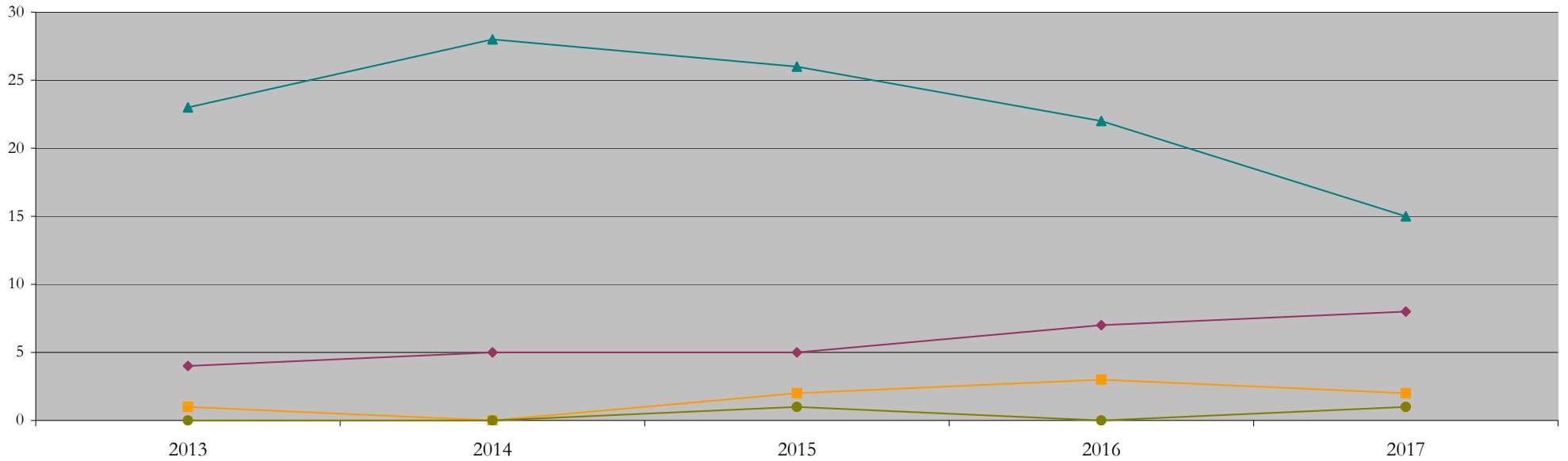
**Total Enrollment (includes secondary curriculum)**

**by Race/Ethnicity**

English\_MA [20FS0311MA]

Fall 2013 through Fall 2017

Fall Semester Year	Total	Under Represented Minorities (URM)																		
		American Indian or Alaska Native		Black or African American		Hispanic / Latino		URM Total		Asian		Native Hawaiian or Pacific Islander		White		Two or More Races		International		Race/Eth Not Reported
		Count	%	Count	%	Count	%	Count	%	Count	%	Count	%	Count	%	Count	%	Count	%	Count
2013	32	0	0.0	3	9.4	1	3.1	4	12.5	1	3.1	0	0.0	23	71.9	1	3.1	0	0.0	3
2014	37	0	0.0	3	8.1	2	5.4	5	13.5	0	0.0	0	0.0	28	75.7	2	5.4	0	0.0	2
2015	37	0	0.0	1	2.7	4	10.8	5	13.5	2	5.4	0	0.0	26	70.3	1	2.7	1	2.7	2
2016	32	0	0.0	2	6.3	5	15.6	7	21.9	3	9.4	0	0.0	22	68.8	0	0.0	0	0.0	0
2017	28	0	0.0	2	7.1	6	21.4	8	28.6	2	7.1	0	0.0	15	53.6	2	7.1	1	3.6	0



**Notes:** 1) URM stands for Under-Represented Minority and includes American Indian or Alaska Native; Black or African-American; Hispanic / Latino race/ethnicity groups  
 2) Individual URM groups, Native Hawaiian Pacific Islander, Two or More Races, and Other race/ethnicity categories left off this chart due to relatively low numbers

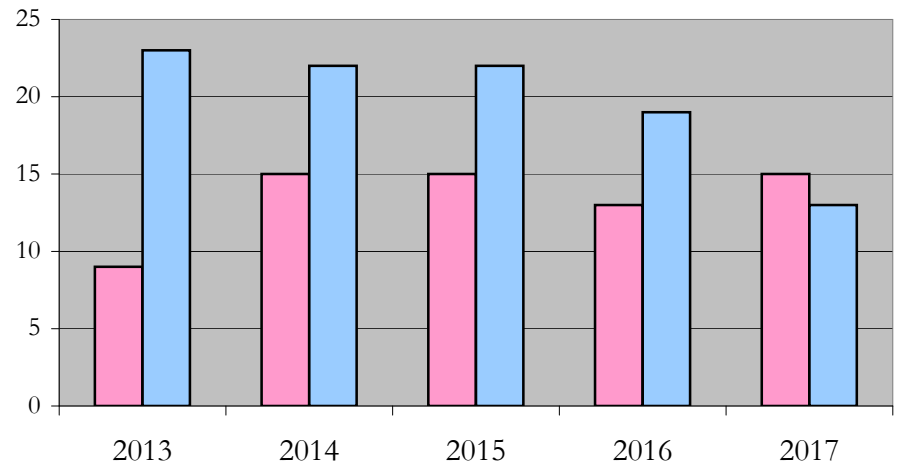
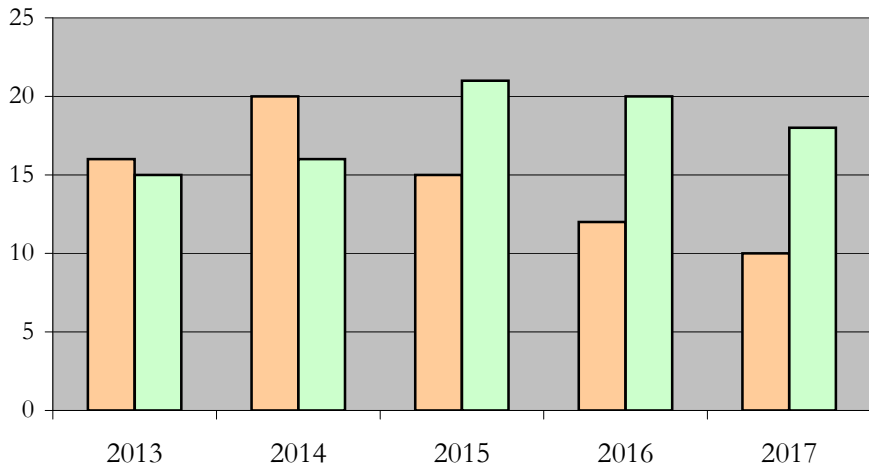
**Total Enrollment (includes secondary curriculum)**

**by Student Type, Gender, and Enrollment Time**

English\_MA [20FS0311MA]

Fall 2013 through Fall 2017

Fall Semester Year	Total	New		Continuing		Male		Female		Gender Not Reported	Part-time		Full-time	
		Count	%	Count	%	Count	%	Count	%	Count	Count	%	Count	%
2013	32	16	50.0	16	50.0	16	50.0	15	46.9	1	9	28.1	23	71.9
2014	37	13	35.1	24	64.9	20	54.1	16	43.2	1	15	40.5	22	59.5
2015	37	15	40.5	22	59.5	15	40.5	21	56.8	1	15	40.5	22	59.5
2016	32	11	34.4	21	65.6	12	37.5	20	62.5	0	13	40.6	19	59.4
2017	28	11	39.3	17	60.7	10	35.7	18	64.3	0	15	53.6	13	46.4



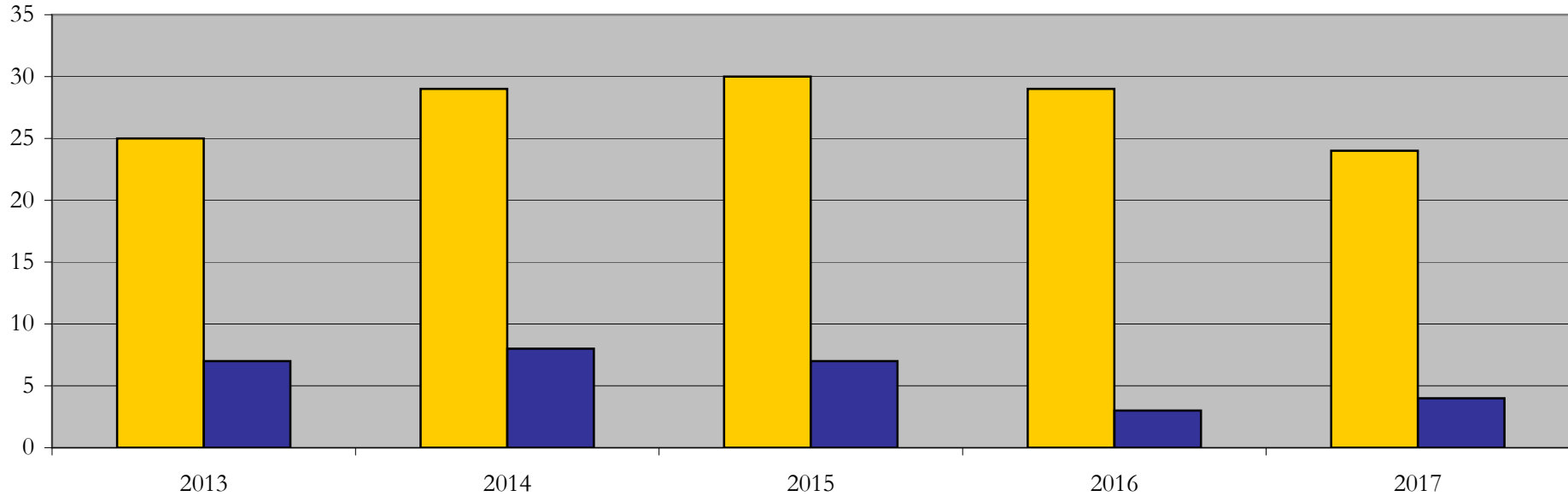
## Enrollment & Degrees Conferred

by Primary/Secondary, Average Age, State Residency

English\_MA [20FS0311MA]

Fall 2013 through Fall 2017

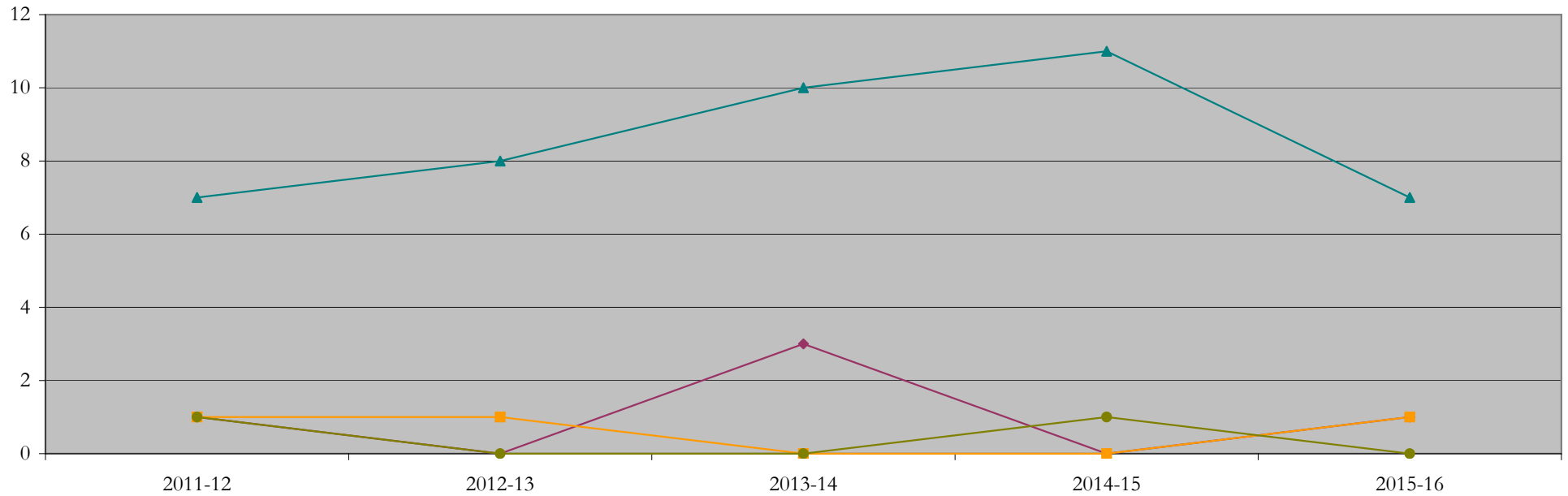
Fall Semester Year	Enrollment			Average Age			State Residency of Total Enrollment					
	Total	Primary	Secondary	Fall New Enrollment	Fall Continuing Enrollment	Academic Year Graduating Class	Residents			Non-Residents		
							Total Enrollment	New Enrollment	Continuing Enrollment	Total Enrollment	New Enrollment	Continuing Enrollment
2013	32	32	0	30	29	25	25	12	13	7	4	3
2014	37	37	0	30	30	25	29	10	19	8	3	5
2015	37	37	0	29	32	28	30	12	18	7	3	4
2016	32	32	0	29	32	32	29	11	18	3	0	3
2017	28	28	0	34	34	30	24	8	16	4	3	1



## Degrees Conferred by Race/Ethnicity

English\_MA [20FS0311MA]  
AY2011-12 through 2015-16

Academic Year	Total	Under Represented Minorities (URM)								Asian	Native Hawaiian or Pacific	White	Two or More Races	International	Not Reported					
		American Indian or Alaska Native		Black or African American		Hispanic / Latino		URM Total												
		Count	%	Count	%	Count	%	Count	%											
2012 - 2013	11	0	0.0	0	0.0	1	9.1	1	9.1	1	9.1	0	0.0	7	63.6	0	0.0	1	9.1	1
2013 - 2014	10	0	0.0	0	0.0	0	0.0	0	0.0	1	10.0	0	0.0	8	80.0	0	0.0	0	0.0	1
2014 - 2015	14	0	0.0	2	14.3	1	7.1	3	21.4	0	0.0	0	0.0	10	71.4	1	7.1	0	0.0	0
2015 - 2016	16	0	0.0	0	0.0	0	0.0	0	0.0	0	0.0	0	0.0	11	68.8	1	6.3	1	6.3	3
2016 - 2017	9	0	0.0	0	0.0	1	11.1	1	11.1	1	11.1	0	0.0	7	77.8	0	0.0	0	0.0	0



**Notes:** 1) URM stands for Under-Represented Minority and includes American Indian or Alaska Native; Black or African-American; Hispanic / Latino race/ethnicity groups  
2) Individual URM groups, Native Hawaiian Pacific Islander, Two or More Races, and Other race/ethnicity categories left off this chart due to relatively low numbers

## Degrees Conferred

### by Gender

English\_MA [20FS0311MA]

AY2011-12 through 2015-16

Academic Year	Total	Male		Female		Not Reported
		Count	%	Count	%	
2012 - 2013	11	3	27.3	8	72.7	0
2013 - 2014	10	4	40.0	6	60.0	0
2014 - 2015	14	7	50.0	7	50.0	0
2015 - 2016	15	9	60.0	6	40.0	0
2016 - 2017	9	4	44.4	5	55.6	0

