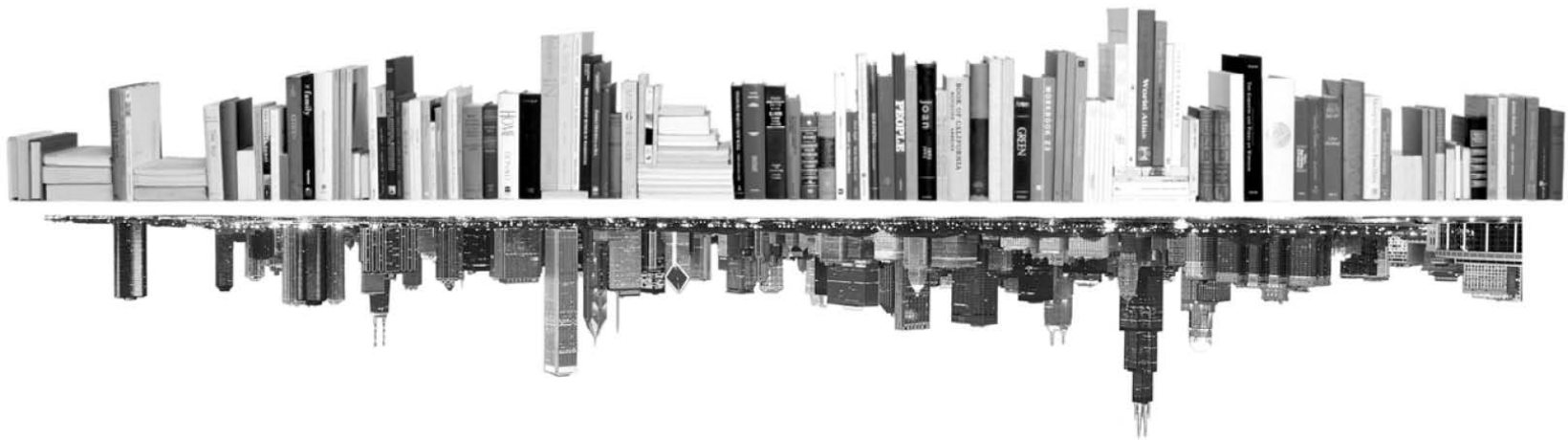


**GRADUATE
COLLEGE**



**ENROLLMENT MANAGEMENT REPORT
COLLEGE PROFILE
LIBERAL ARTS AND SCIENCES
FALL 2017**





INTRODUCTION – COLLEGE PROFILE

The following college profile has been developed to tailor our annual enrollment report to your college’s data.

The college profile report tracks students, not enrollments. This means that students with dual enrollments are reported only once – under their first program.

Kevin Monahan
Director of Graduate Program Review and Information Systems
Graduate College, University of Illinois at Chicago
Voice: 312.413.0410 Email: kmonahan@uic.edu

TABLE OF CONTENTS

MATRICULATION	
Diversity Pipeline	1
APPLICATIONS	
by Race/Ethnicity	2 – 5
ENROLLMENT	
by Race/Ethnicity	6 – 9
by Type, Time, & Gender	10 – 13
DEGREES	
by Race/Ethnicity	14 – 15
by Gender	16 – 17
List of academic programs included in this report	Appendix A

Matriculation

Diversity Pipeline

College of Liberal Arts and Sciences

Fall 2013 - Fall 2017

	Fall Semester Year	Applied					Admitted					Non-URM Admitted to Applied Yield %	URM Admitted to Applied Yield %	New Enrollment					Non-URM Enrolled to Admitted Yield %	URM Enrolled to Admitted Yield %	Total Enrollment				
		Grand Total	Non-URM Total		URM Total		Grand Total	Non-URM Total		URM Total				Grand Total	Non-URM Total		URM Total				Grand Total	Non-URM Total		URM Total	
			Count	%	Count	%		Count	%	Count	%				Count	%	Count	%				Count	%	Count	%
All	2013	2809	2484	88.4%	325	11.6%	577	515	89.3%	62	10.7%	20.7%	19.1%	249	216	86.7%	33	13.3%	41.9%	53.2%	1312	1156	88.1%	156	11.9%
	2014	2396	2128	88.8%	268	11.2%	594	525	88.4%	69	11.6%	24.7%	25.7%	258	228	88.4%	30	11.6%	43.4%	43.5%	1298	1149	88.5%	149	11.5%
	2015	2133	1869	87.6%	264	12.4%	493	419	85.0%	74	15.0%	22.4%	28.0%	238	196	82.4%	42	17.6%	46.8%	56.8%	1256	1097	87.3%	159	12.7%
	2016	2035	1776	87.3%	259	12.7%	507	433	85.4%	74	14.6%	24.4%	28.6%	222	180	81.1%	42	18.9%	41.6%	56.8%	1234	1056	85.6%	178	14.4%
	2017	1986	1715	86.4%	271	13.6%	437	366	83.8%	71	16.2%	21.3%	26.2%	204	167	81.9%	37	18.1%	45.6%	52.1%	1185	1013	85.5%	172	14.5%
	Average	2272	1994	87.8%	277	12.2%	522	452	86.6%	70	13.4%	22.6%	25.2%	234	197	84.3%	37	15.7%	43.7%	52.6%	1257	1094	87.0%	163	13.0%
Masters & IBHE Certificate	2013	705	624	88.5%	81	11.5%	223	189	84.8%	34	15.2%	30.3%	42.0%	101	80	79.2%	21	20.8%	42.3%	61.8%	294	244	83.0%	50	17.0%
	2014	580	502	86.6%	78	13.4%	222	180	81.1%	42	18.9%	35.9%	53.8%	92	72	78.3%	20	21.7%	40.0%	47.6%	269	223	82.9%	46	17.1%
	2015	475	399	84.0%	76	16.0%	175	136	77.7%	39	22.3%	34.1%	51.3%	88	64	72.7%	24	27.3%	47.1%	61.5%	241	192	79.7%	49	20.3%
	2016	439	354	80.6%	85	19.4%	162	122	75.3%	40	24.7%	34.5%	47.1%	77	51	66.2%	26	33.8%	41.8%	65.0%	224	164	73.2%	60	26.8%
	2017	416	331	79.6%	85	20.4%	154	110	71.4%	44	28.6%	33.2%	51.8%	70	48	68.6%	22	31.4%	43.6%	50.0%	190	137	72.1%	53	27.9%
	Average	523	442	84.5%	81	15.5%	187	147	78.7%	40	21.3%	33.3%	49.1%	86	63	73.6%	23	26.4%	42.7%	56.8%	244	192	78.8%	52	21.2%
Doctorate	2013	2082	1843	88.5%	239	11.5%	341	317	93.0%	24	7.0%	17.2%	10.0%	138	128	92.8%	10	7.2%	40.4%	41.7%	1005	903	89.9%	102	10.1%
	2014	1797	1608	89.5%	189	10.5%	360	333	92.5%	27	7.5%	20.7%	14.3%	159	149	93.7%	10	6.3%	44.7%	37.0%	1015	914	90.0%	101	10.0%
	2015	1648	1460	88.6%	188	11.4%	312	277	88.8%	35	11.2%	19.0%	18.6%	145	127	87.6%	18	12.4%	45.8%	51.4%	1002	893	89.1%	109	10.9%
	2016	1585	1413	89.1%	172	10.9%	337	305	90.5%	32	9.5%	21.6%	18.6%	139	124	89.2%	15	10.8%	40.7%	46.9%	998	882	88.4%	116	11.6%
	2017	1562	1376	88.1%	186	11.9%	279	252	90.3%	27	9.7%	18.3%	14.5%	132	117	88.6%	15	11.4%	46.4%	55.6%	989	871	88.1%	118	11.9%
	Average	1735	1540	88.8%	195	11.2%	326	297	91.1%	29	8.9%	19.3%	14.9%	143	129	90.5%	14	9.5%	43.5%	46.9%	1002	893	89.1%	109	10.9%
Non-Degree & Campus Certificate	2013	22	17	77.3%	5	22.7%	13	9	69.2%	4	30.8%	52.9%	80.0%	10	8	80.0%	2	20.0%	88.9%	50.0%	13	9	69.2%	4	30.8%
	2014	19	18	94.7%	1	5.3%	12	12	100.0%	0	0.0%	66.7%	0.0%	7	7	100.0%	0	0.0%	58.3%	0.0%	14	12	85.7%	2	14.3%
	2015	10	10	100.0%	0	0.0%	6	6	100.0%	0	0.0%	60.0%	0.0%	5	5	100.0%	0	0.0%	83.3%	0.0%	13	12	92.3%	1	7.7%
	2016	11	9	81.8%	2	18.2%	8	6	75.0%	2	25.0%	66.7%	100.0%	6	5	83.3%	1	16.7%	83.3%	50.0%	12	10	83.3%	2	16.7%
	2017	8	8	100.0%	0	0.0%	4	4	100.0%	0	0.0%	50.0%	0.0%	2	2	100.0%	0	0.0%	50.0%	0.0%	6	5	83.3%	1	16.7%
	Average	14	12	88.6%	2	11.4%	9	7	86.0%	1	14.0%	59.7%	75.0%	6	5	90.0%	1	10.0%	73.0%	50.0%	12	10	82.8%	2	17.2%

Note: URM stands for Under-Represented Minority and includes American Indian or Alaska Native; Black or African-American; Hispanic / Latino race/ethnicity groups

**Applications - Total
by Race/Ethnicity**

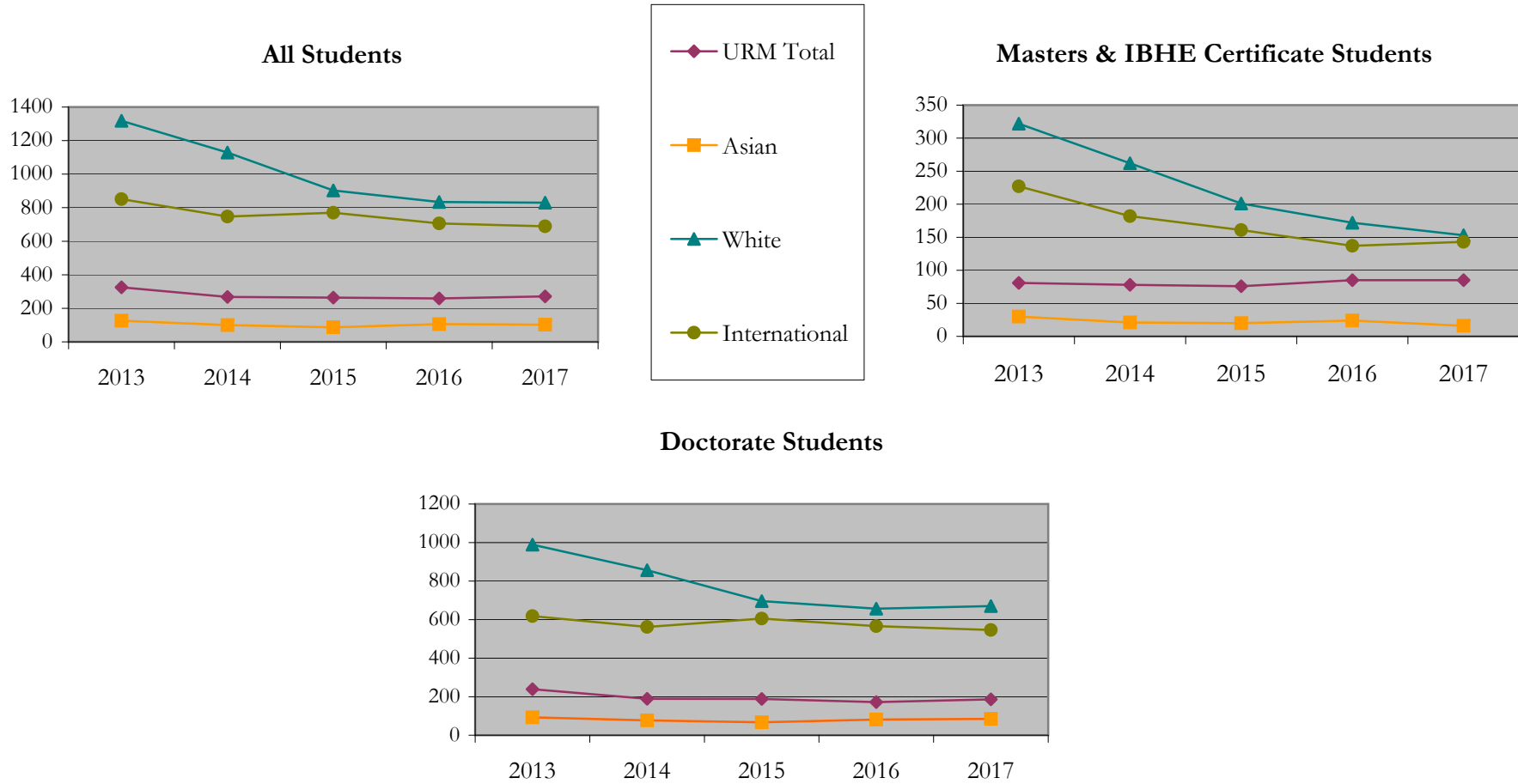
College of Liberal Arts and Sciences
Fall 2013 - Fall 2017

		Total	Under Represented Minorities (URM)																Not Reported		
			American Indian or Alaska Native		Black or African American		Hispanic / Latino		URM Total		Asian		Native Hawaiian or Pacific Islander		White		Two or More Races			International	
			Count	%	Count	%	Count	%	Count	%	Count	%	Count	%	Count	%	Count	%		Count	%
All	2013	2809	3	0.1	124	4.4	198	7.0	325	11.6	126	4.5	1	0.0	1318	46.9	80	2.8	851	30.3	108
	2014	2399	2	0.1	91	3.8	175	7.3	268	11.2	100	4.2	4	0.2	1129	47.1	67	2.8	747	31.1	84
	2015	2133	4	0.2	81	3.8	179	8.4	264	12.4	87	4.1	1	0.0	903	42.3	50	2.3	770	36.1	58
	2016	2035	3	0.1	83	4.1	173	8.5	259	12.7	106	5.2	1	0.0	834	41.0	51	2.5	706	34.7	78
	2017	1986	2	0.1	91	4.6	178	9.0	271	13.6	102	5.1	0	0.0	830	41.8	37	1.9	689	34.7	57
Masters & IBHE Certificate	2013	705	2	0.3	26	3.7	53	7.5	81	11.5	30	4.3	1	0.1	322	45.7	19	2.7	227	32.2	25
	2014	580	0	0.0	21	3.6	57	9.8	78	13.4	21	3.6	0	0.0	262	45.2	15	2.6	182	31.4	22
	2015	475	2	0.4	19	4.0	55	11.6	76	16.0	20	4.2	0	0.0	201	42.3	9	1.9	161	33.9	8
	2016	439	0	0.0	29	6.6	56	12.8	85	19.4	24	5.5	0	0.0	172	39.2	12	2.7	137	31.2	9
	2017	416	1	0.2	26	6.3	58	13.9	85	20.4	16	3.8	0	0.0	153	36.8	9	2.2	143	34.4	10
Doctorate	2013	2082	1	0.0	97	4.7	141	6.8	239	11.5	93	4.5	0	0.0	989	47.5	60	2.9	618	29.7	83
	2014	1800	2	0.1	70	3.9	117	6.5	189	10.5	77	4.3	4	0.2	856	47.6	50	2.8	562	31.2	62
	2015	1648	2	0.1	62	3.8	124	7.5	188	11.4	67	4.1	1	0.1	696	42.2	41	2.5	605	36.7	50
	2016	1585	3	0.2	53	3.3	116	7.3	172	10.9	81	5.1	1	0.1	657	41.5	39	2.5	566	35.7	69
	2017	1562	1	0.1	65	4.2	120	7.7	186	11.9	85	5.4	0	0.0	670	42.9	28	1.8	546	35.0	47
Non-Degree & Campus Certificate	2013	22	0	0.0	1	4.5	4	18.2	5	22.7	3	13.6	0	0.0	7	31.8	1	4.5	6	27.3	0
	2014	19	0	0.0	0	0.0	1	5.3	1	5.3	2	10.5	0	0.0	11	57.9	2	10.5	3	15.8	0
	2015	10	0	0.0	0	0.0	0	0.0	0	0.0	0	0.0	0	0.0	6	60.0	0	0.0	4	40.0	0
	2016	11	0	0.0	1	9.1	1	9.1	2	18.2	1	9.1	0	0.0	5	45.5	0	0.0	3	27.3	0
	2017	8	0	0.0	0	0.0	0	0.0	0	0.0	1	12.5	0	0.0	7	87.5	0	0.0	0	0.0	0

Note: URM stands for Under-Represented Minority and includes American Indian or Alaska Native; Black or African-American; Hispanic / Latino race/ethnicity groups

Applications - Total by Race/Ethnicity

College of Liberal Arts and Sciences
Fall 2013 - Fall 2017



Notes: 1) URM stands for Under-Represented Minority and includes American Indian or Alaska Native; Black or African-American; Hispanic / Latino race/ethnicity groups
2) Individual URM groups, Native Hawaiian Pacific Islander, Two or More Races, and Other race/ethnicity categories left off this charts due to relatively low numbers

Applications - Admitted

by Race/Ethnicity

College of Liberal Arts and Sciences

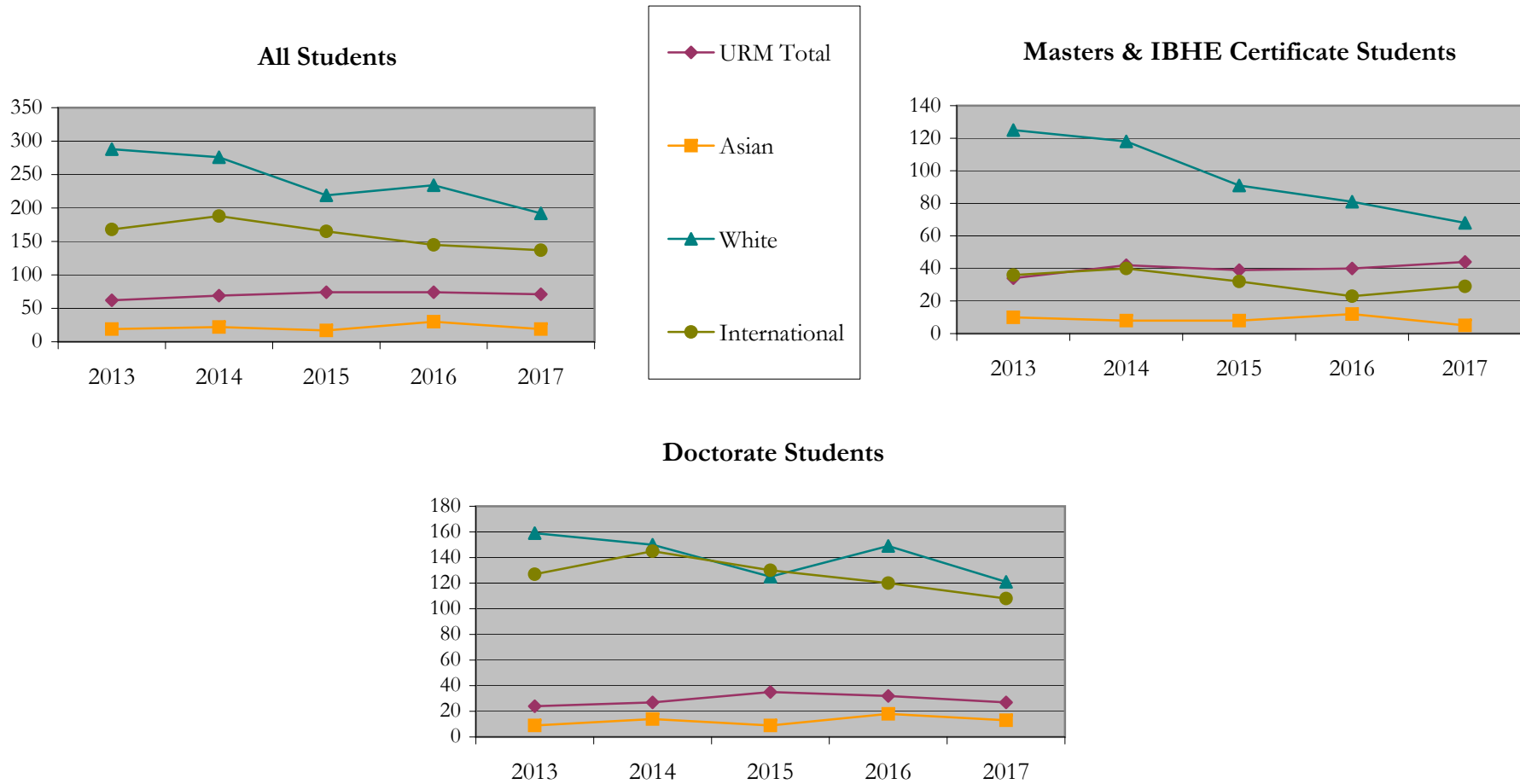
Fall 2013 - Fall 2017

		Total	Under Represented Minorities (URM)								Asian		Native Hawaiian or Pacific Islander		White		Two or More Races		International		Not Reported
			American Indian or Alaska Native		Black or African American		Hispanic / Latino		URM Total												
			Count	%	Count	%	Count	%	Count	%											
All	2013	577	2	0.3	17	2.9	43	7.5	62	10.7	19	3.3	0	0.0	288	49.9	22	3.8	168	29.1	18
	2014	594	0	0.0	18	3.0	51	8.6	69	11.6	22	3.7	0	0.0	276	46.5	21	3.5	188	31.6	18
	2015	493	1	0.2	15	3.0	58	11.8	74	15.0	17	3.4	0	0.0	219	44.4	11	2.2	165	33.5	7
	2016	507	1	0.2	18	3.6	55	10.8	74	14.6	30	5.9	0	0.0	234	46.2	9	1.8	145	28.6	15
	2017	437	1	0.2	21	4.8	49	11.2	71	16.2	19	4.3	0	0.0	192	43.9	7	1.6	137	31.4	11
Masters & IBHE Certificate	2013	223	2	0.9	10	4.5	22	9.9	34	15.2	10	4.5	0	0.0	125	56.1	8	3.6	36	16.1	10
	2014	222	0	0.0	10	4.5	32	14.4	42	18.9	8	3.6	0	0.0	118	53.2	9	4.1	40	18.0	5
	2015	175	0	0.0	6	3.4	33	18.9	39	22.3	8	4.6	0	0.0	91	52.0	3	1.7	32	18.3	2
	2016	162	0	0.0	8	4.9	32	19.8	40	24.7	12	7.4	0	0.0	81	50.0	3	1.9	23	14.2	3
	2017	154	0	0.0	13	8.4	31	20.1	44	28.6	5	3.2	0	0.0	68	44.2	4	2.6	29	18.8	4
Doctorate	2013	341	0	0.0	6	1.8	18	5.3	24	7.0	9	2.6	0	0.0	159	46.6	14	4.1	127	37.2	8
	2014	360	0	0.0	8	2.2	19	5.3	27	7.5	14	3.9	0	0.0	150	41.7	11	3.1	145	40.3	13
	2015	312	1	0.3	9	2.9	25	8.0	35	11.2	9	2.9	0	0.0	125	40.1	8	2.6	130	41.7	5
	2016	337	1	0.3	9	2.7	22	6.5	32	9.5	18	5.3	0	0.0	149	44.2	6	1.8	120	35.6	12
	2017	279	1	0.4	8	2.9	18	6.5	27	9.7	13	4.7	0	0.0	121	43.4	3	1.1	108	38.7	7
Non-Degree & Campus Certificate	2013	13	0	0.0	1	7.7	3	23.1	4	30.8	0	0.0	0	0.0	4	30.8	0	0.0	5	38.5	0
	2014	12	0	0.0	0	0.0	0	0.0	0	0.0	0	0.0	0	0.0	8	66.7	1	8.3	3	25.0	0
	2015	6	0	0.0	0	0.0	0	0.0	0	0.0	0	0.0	0	0.0	3	50.0	0	0.0	3	50.0	0
	2016	8	0	0.0	1	12.5	1	12.5	2	25.0	0	0.0	0	0.0	4	50.0	0	0.0	2	25.0	0
	2017	4	0	0.0	0	0.0	0	0.0	0	0.0	1	25.0	0	0.0	3	75.0	0	0.0	0	0.0	0

Note: URM stands for Under-Represented Minority and includes American Indian or Alaska Native; Black or African-American; Hispanic / Latino race/ethnicity groups

Applications - Admitted by Race/Ethnicity

College of Liberal Arts and Sciences
Fall 2013 - Fall 2017



Notes: 1) URM stands for Under-Represented Minority and includes American Indian or Alaska Native; Black or African-American; Hispanic / Latino race/ethnicity groups
 2) Individual URM groups, Native Hawaiian Pacific Islander, Two or More Races, and Other race/ethnicity categories left off this charts due to relatively low numbers

**Enrollment - New
by Race/Ethnicity**

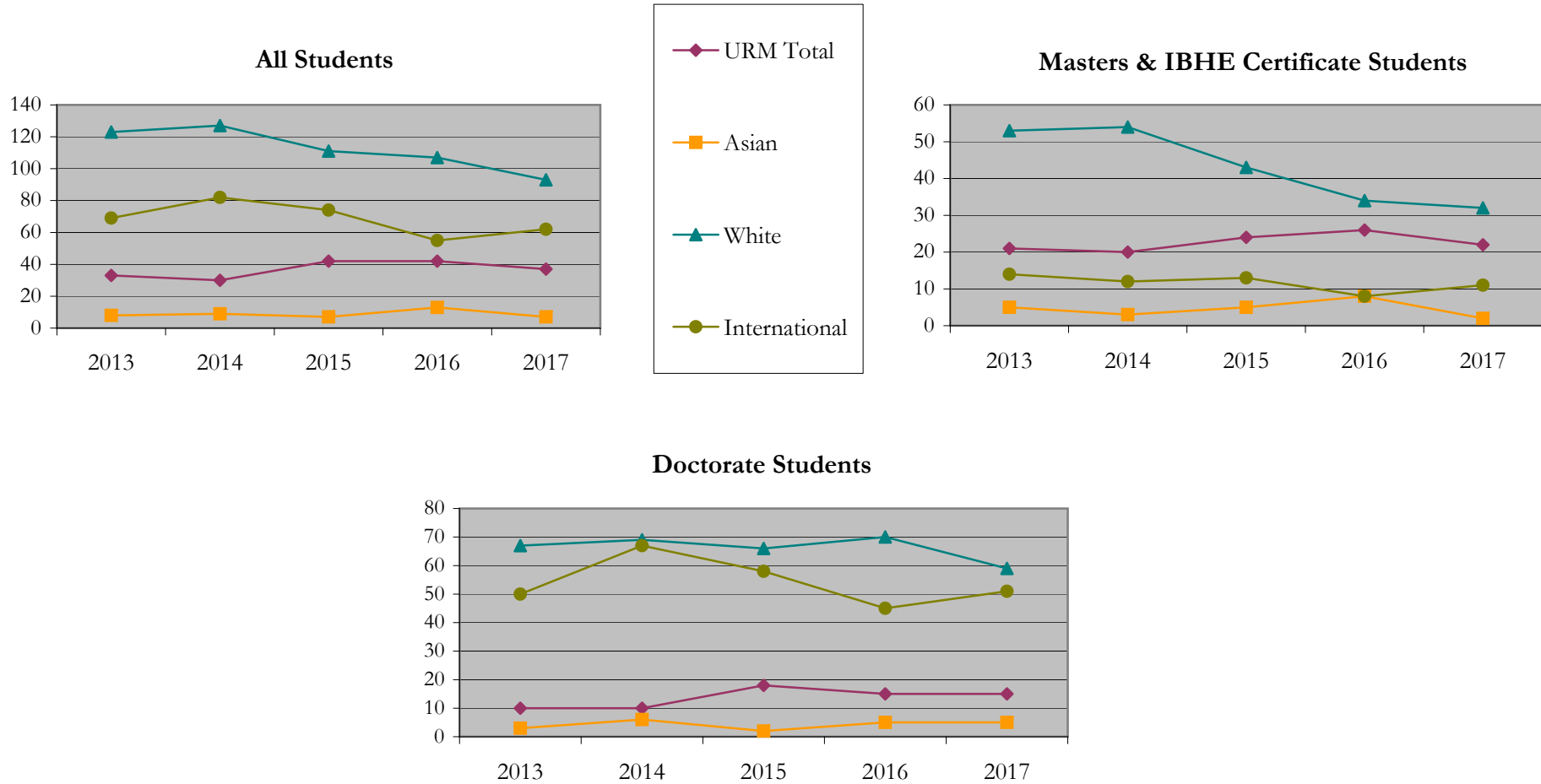
College of Liberal Arts and Sciences
Fall 2013 - Fall 2017

		Total	Under Represented Minorities (URM)								Asian		Native Hawaiian or Pacific Islander		White		Two or More Races		International		Not Reported
			American Indian or Alaska Native		Black or African American		Hispanic / Latino		URM Total												
			Count	%	Count	%	Count	%	Count	%											
All	2013	249	1	0.4	8	3.2	24	9.6	33	13.3	8	3.2	0	0.0	123	49.4	10	4.0	69	27.7	6
	2014	258	0	0.0	10	3.9	20	7.8	30	11.6	9	3.5	0	0.0	127	49.2	7	2.7	82	31.8	3
	2015	238	0	0.0	7	2.9	35	14.7	42	17.6	7	2.9	0	0.0	111	46.6	2	0.8	74	31.1	2
	2016	222	1	0.5	9	4.1	32	14.4	42	18.9	13	5.9	0	0.0	107	48.2	5	2.3	55	24.8	0
	2017	204	1	0.5	9	4.4	27	13.2	37	18.1	7	3.4	0	0.0	93	45.6	3	1.5	62	30.4	2
Masters & IBHE Certificate	2013	101	1	1.0	6	5.9	14	13.9	21	20.8	5	5.0	0	0.0	53	52.5	4	4.0	14	13.9	4
	2014	92	0	0.0	6	6.5	14	15.2	20	21.7	3	3.3	0	0.0	54	58.7	3	3.3	12	13.0	0
	2015	88	0	0.0	2	2.3	22	25.0	24	27.3	5	5.7	0	0.0	43	48.9	1	1.1	13	14.8	2
	2016	77	0	0.0	6	7.8	20	26.0	26	33.8	8	10.4	0	0.0	34	44.2	1	1.3	8	10.4	0
	2017	70	0	0.0	7	10.0	15	21.4	22	31.4	2	2.9	0	0.0	32	45.7	2	2.9	11	15.7	1
Doctorate	2013	138	0	0.0	2	1.4	8	5.8	10	7.2	3	2.2	0	0.0	67	48.6	6	4.3	50	36.2	2
	2014	159	0	0.0	4	2.5	6	3.8	10	6.3	6	3.8	0	0.0	69	43.4	4	2.5	67	42.1	3
	2015	145	0	0.0	5	3.4	13	9.0	18	12.4	2	1.4	0	0.0	66	45.5	1	0.7	58	40.0	0
	2016	139	1	0.7	2	1.4	12	8.6	15	10.8	5	3.6	0	0.0	70	50.4	4	2.9	45	32.4	0
	2017	132	1	0.8	2	1.5	12	9.1	15	11.4	5	3.8	0	0.0	59	44.7	1	0.8	51	38.6	1
Non-Degree & Campus Certificate	2013	10	0	0.0	0	0.0	2	20.0	2	20.0	0	0.0	0	0.0	3	30.0	0	0.0	5	50.0	0
	2014	7	0	0.0	0	0.0	0	0.0	0	0.0	0	0.0	0	0.0	4	57.1	0	0.0	3	42.9	0
	2015	5	0	0.0	0	0.0	0	0.0	0	0.0	0	0.0	0	0.0	2	40.0	0	0.0	3	60.0	0
	2016	6	0	0.0	1	16.7	0	0.0	1	16.7	0	0.0	0	0.0	3	50.0	0	0.0	2	33.3	0
	2017	2	0	0.0	0	0.0	0	0.0	0	0.0	0	0.0	0	0.0	2	100.0	0	0.0	0	0.0	0

Note: URM stands for Under-Represented Minority and includes American Indian or Alaska Native; Black or African-American; Hispanic / Latino race/ethnicity groups

Enrollment - New by Race/Ethnicity

College of Liberal Arts and Sciences
Fall 2013 - Fall 2017



Notes: 1) URM stands for Under-Represented Minority and includes American Indian or Alaska Native; Black or African-American; Hispanic / Latino race/ethnicity groups
2) Individual URM groups, Native Hawaiian Pacific Islander, Two or More Races, and Other race/ethnicity categories left off this charts due to relatively low numbers

**Enrollment - Total
by Race/Ethnicity**

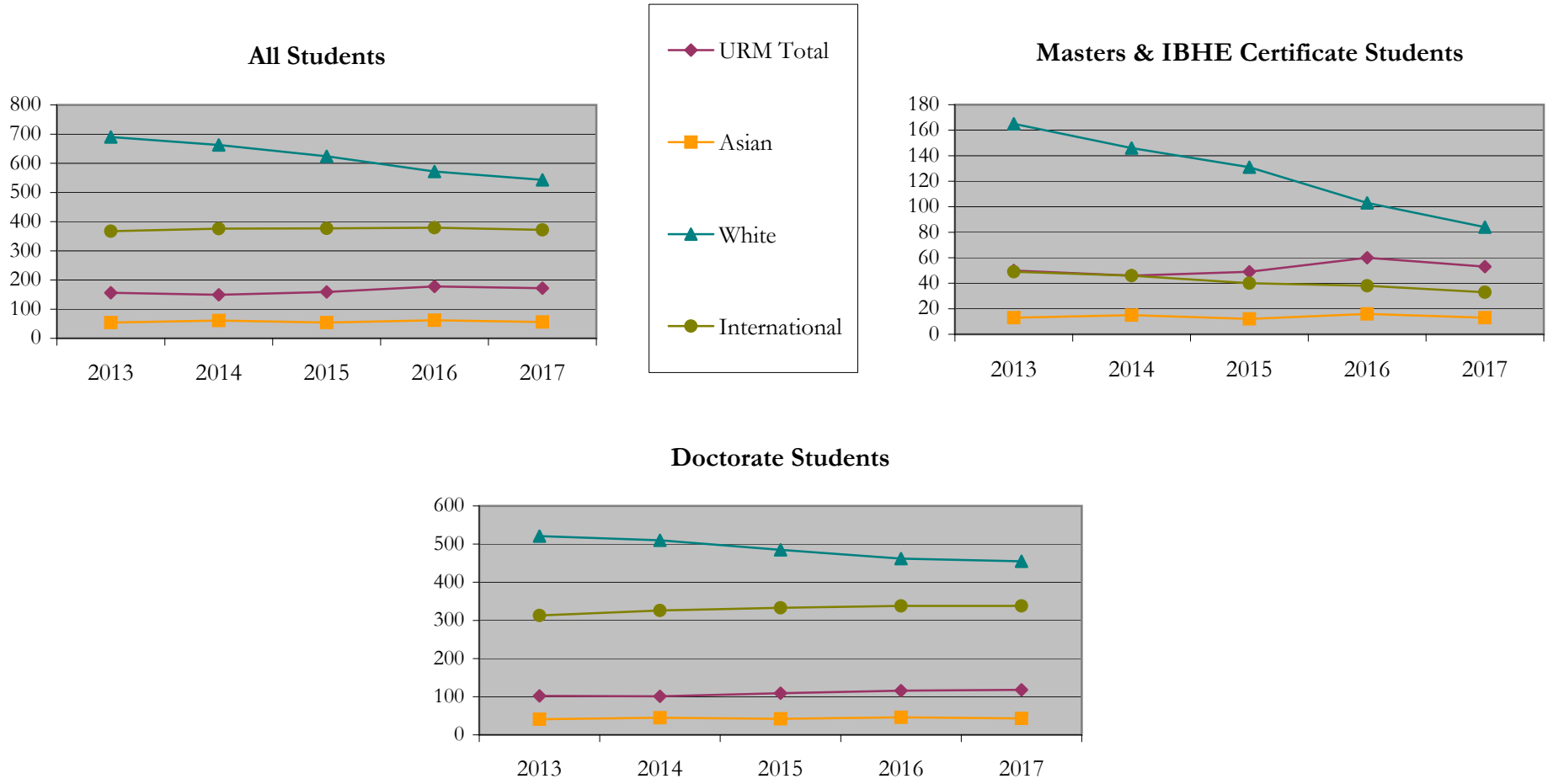
College of Liberal Arts and Sciences
Fall 2013 - Fall 2017

		Total	Under Represented Minorities (URM)								Asian		Native Hawaiian or Pacific Islander		White		Two or More Races		International		Not Reported
			American Indian or Alaska Native		Black or African American		Hispanic / Latino		URM Total												
			Count	%	Count	%	Count	%	Count	%											
All	2013	1312	2	0.2	46	3.5	108	8.2	156	11.9	54	4.1	2	0.2	690	52.6	23	1.8	367	28.0	20
	2014	1298	2	0.2	45	3.5	102	7.9	149	11.5	61	4.7	2	0.2	663	51.1	28	2.2	376	29.0	19
	2015	1256	1	0.1	44	3.5	114	9.1	159	12.7	54	4.3	2	0.2	624	49.7	24	1.9	377	30.0	16
	2016	1234	2	0.2	45	3.6	131	10.6	178	14.4	62	5.0	1	0.1	572	46.4	27	2.2	379	30.7	15
	2017	1185	3	0.3	47	4.0	122	10.3	172	14.5	56	4.7	1	0.1	543	45.8	28	2.4	372	31.4	13
Masters & IBHE Certificate	2013	294	1	0.3	9	3.1	40	13.6	50	17.0	13	4.4	1	0.3	165	56.1	4	1.4	49	16.7	12
	2014	269	1	0.4	13	4.8	32	11.9	46	17.1	15	5.6	1	0.4	146	54.3	7	2.6	46	17.1	8
	2015	241	0	0.0	9	3.7	40	16.6	49	20.3	12	5.0	1	0.4	131	54.4	4	1.7	40	16.6	4
	2016	224	0	0.0	9	4.0	51	22.8	60	26.8	16	7.1	0	0.0	103	46.0	3	1.3	38	17.0	4
	2017	190	0	0.0	13	6.8	40	21.1	53	27.9	13	6.8	0	0.0	84	44.2	6	3.2	33	17.4	1
Doctorate	2013	1005	1	0.1	37	3.7	64	6.4	102	10.1	41	4.1	1	0.1	521	51.8	19	1.9	313	31.1	8
	2014	1015	1	0.1	32	3.2	68	6.7	101	10.0	45	4.4	1	0.1	510	50.2	21	2.1	326	32.1	11
	2015	1002	1	0.1	35	3.5	73	7.3	109	10.9	42	4.2	1	0.1	485	48.4	20	2.0	333	33.2	12
	2016	998	2	0.2	35	3.5	79	7.9	116	11.6	46	4.6	1	0.1	462	46.3	24	2.4	338	33.9	11
	2017	989	3	0.3	34	3.4	81	8.2	118	11.9	43	4.3	1	0.1	455	46.0	22	2.2	338	34.2	12
Non-Degree & Campus Certificate	2013	13	0	0.0	0	0.0	4	30.8	4	30.8	0	0.0	0	0.0	4	30.8	0	0.0	5	38.5	0
	2014	14	0	0.0	0	0.0	2	14.3	2	14.3	1	7.1	0	0.0	7	50.0	0	0.0	4	28.6	0
	2015	13	0	0.0	0	0.0	1	7.7	1	7.7	0	0.0	0	0.0	8	61.5	0	0.0	4	30.8	0
	2016	12	0	0.0	1	8.3	1	8.3	2	16.7	0	0.0	0	0.0	7	58.3	0	0.0	3	25.0	0
	2017	6	0	0.0	0	0.0	1	16.7	1	16.7	0	0.0	0	0.0	4	66.7	0	0.0	1	16.7	0

Note: URM stands for Under-Represented Minority and includes American Indian or Alaska Native; Black or African-American; Hispanic / Latino race/ethnicity groups

Enrollment - Total by Race/Ethnicity

College of Liberal Arts and Sciences
Fall 2013 - Fall 2017



Notes: 1) URM stands for Under-Represented Minority and includes American Indian or Alaska Native; Black or African-American; Hispanic / Latino race/ethnicity groups

2) Individual URM groups, Native Hawaiian Pacific Islander, Two or More Races, and Other race/ethnicity categories left off this charts due to relatively low numbers

Enrollment

by Student Type, Enrollment Time, and Gender

College of Liberal Arts and Sciences

Fall 2013 - Fall 2017

		Total	New		Continuing		Male		Female		Gender Not Reported	Part-time		Full-time	
			Count	%	Count	%	Count	%	Count	%		Count	%	Count	%
All	2013	1312	249	19.0	1063	81.0	641	48.9	670	51.1	1	199	15.2	1113	84.8
	2014	1298	258	19.9	1040	80.1	659	50.8	638	49.2	1	223	17.2	1075	82.8
	2015	1256	238	18.9	1018	81.1	637	50.7	618	49.2	1	184	14.6	1072	85.4
	2016	1234	222	18.0	1012	82.0	607	49.2	626	50.7	1	183	14.8	1051	85.2
	2017	1185	204	17.2	981	82.8	589	49.7	596	50.3	0	174	14.7	1011	85.3
Masters & IBHE Certificate	2013	294	101	34.4	193	65.6	129	43.9	164	55.8	1	76	25.9	218	74.1
	2014	269	92	34.2	177	65.8	131	48.7	137	50.9	1	70	26.0	199	74.0
	2015	241	88	36.5	153	63.5	106	44.0	134	55.6	1	60	24.9	181	75.1
	2016	224	77	34.4	147	65.6	83	37.1	140	62.5	1	58	25.9	166	74.1
	2017	190	70	36.8	120	63.2	74	38.9	116	61.1	0	52	27.4	138	72.6
Doctorate	2013	1005	138	13.7	867	86.3	505	50.2	500	49.8	0	116	11.5	889	88.5
	2014	1015	159	15.7	856	84.3	519	51.1	496	48.9	0	144	14.2	871	85.8
	2015	1002	145	14.5	857	85.5	524	52.3	478	47.7	0	114	11.4	888	88.6
	2016	998	139	13.9	859	86.1	515	51.6	483	48.4	0	116	11.6	882	88.4
	2017	989	132	13.3	857	86.7	510	51.6	479	48.4	0	118	11.9	871	88.1
Non-Degree & Campus Certificate	2013	13	10	76.9	3	23.1	7	53.8	6	46.2	0	7	53.8	6	46.2
	2014	14	7	50.0	7	50.0	9	64.3	5	35.7	0	9	64.3	5	35.7
	2015	13	5	38.5	8	61.5	7	53.8	6	46.2	0	10	76.9	3	23.1
	2016	12	6	50.0	6	50.0	9	75.0	3	25.0	0	9	75.0	3	25.0
	2017	6	2	33.3	4	66.7	5	83.3	1	16.7	0	4	66.7	2	33.3

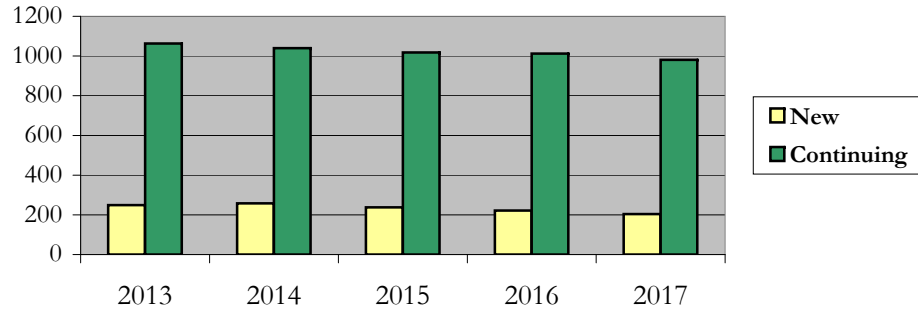
Enrollment

by Student Type, Enrollment Time, and Gender (All Students)

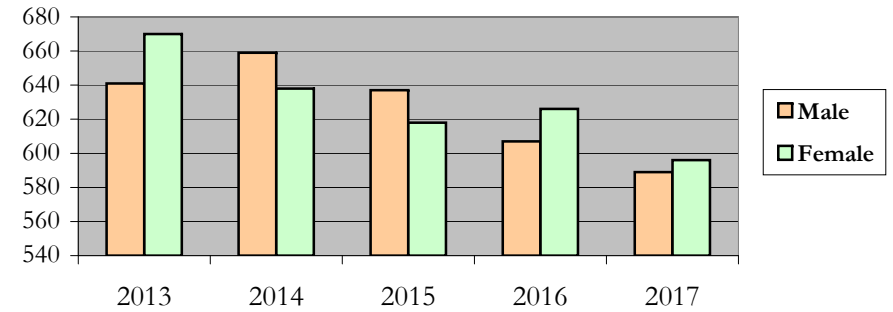
College of Liberal Arts and Sciences

Fall 2013 - Fall 2017

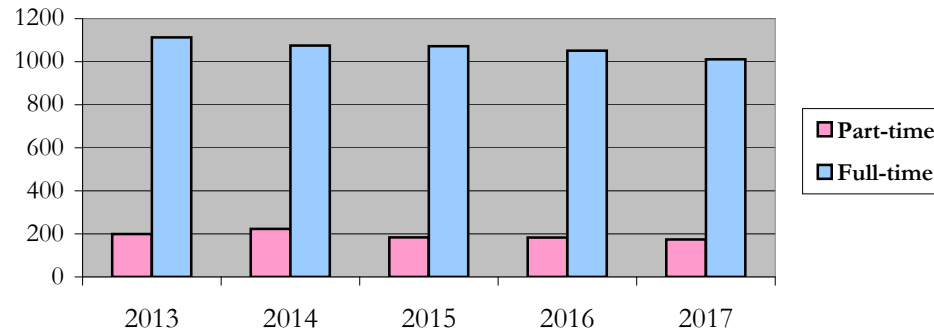
New and Continuing Enrollment



Enrollment by Gender



Enrollment by Student Enrollment Time



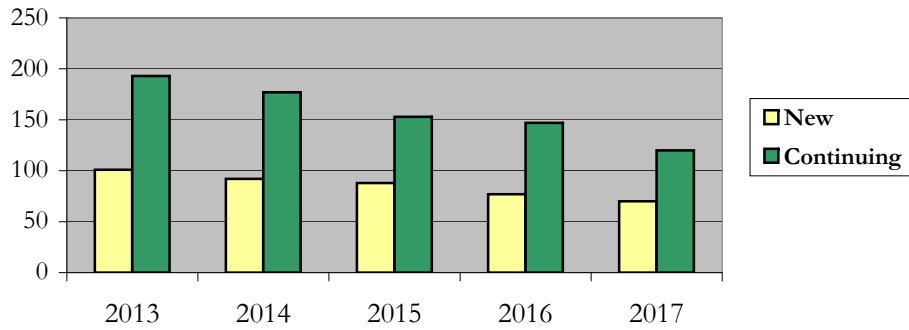
Enrollment

by Student Type, Enrollment Time, and Gender (Master's Students)

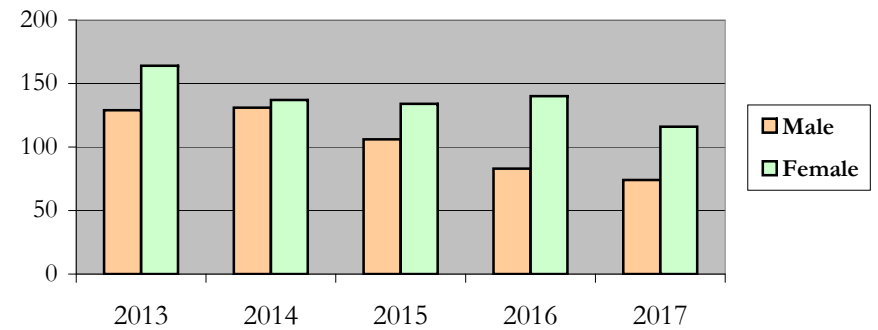
College of Liberal Arts and Sciences

Fall 2013 - Fall 2017

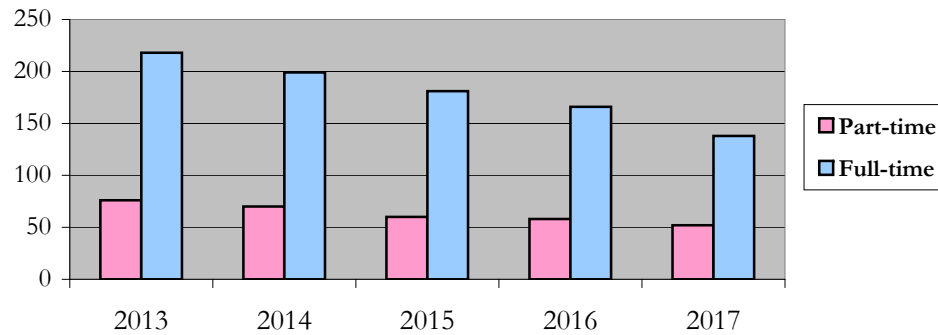
New and Continuing Enrollment



Enrollment by Gender



Enrollment by Student Enrollment Time



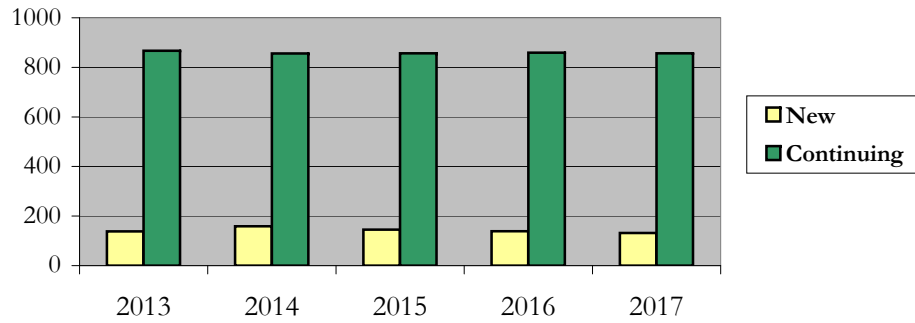
Enrollment

by Student Type, Enrollment Time, and Gender (Doctorate Students)

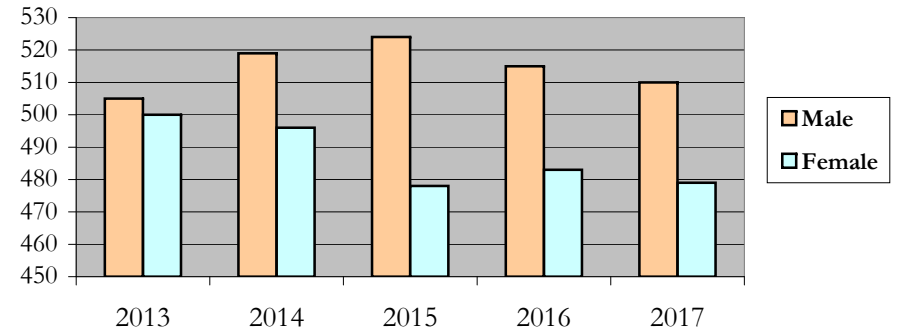
College of Liberal Arts and Sciences

Fall 2013 - Fall 2017

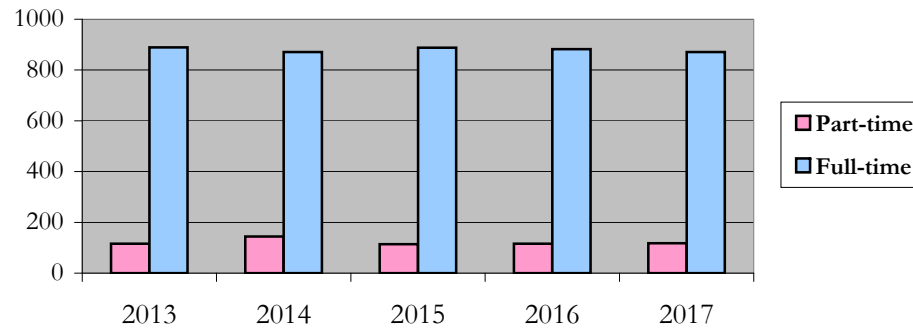
New and Continuing Enrollment



Enrollment by Gender



Enrollment by Student Enrollment Time



**Degrees Conferred
by Race/Ethnicity**

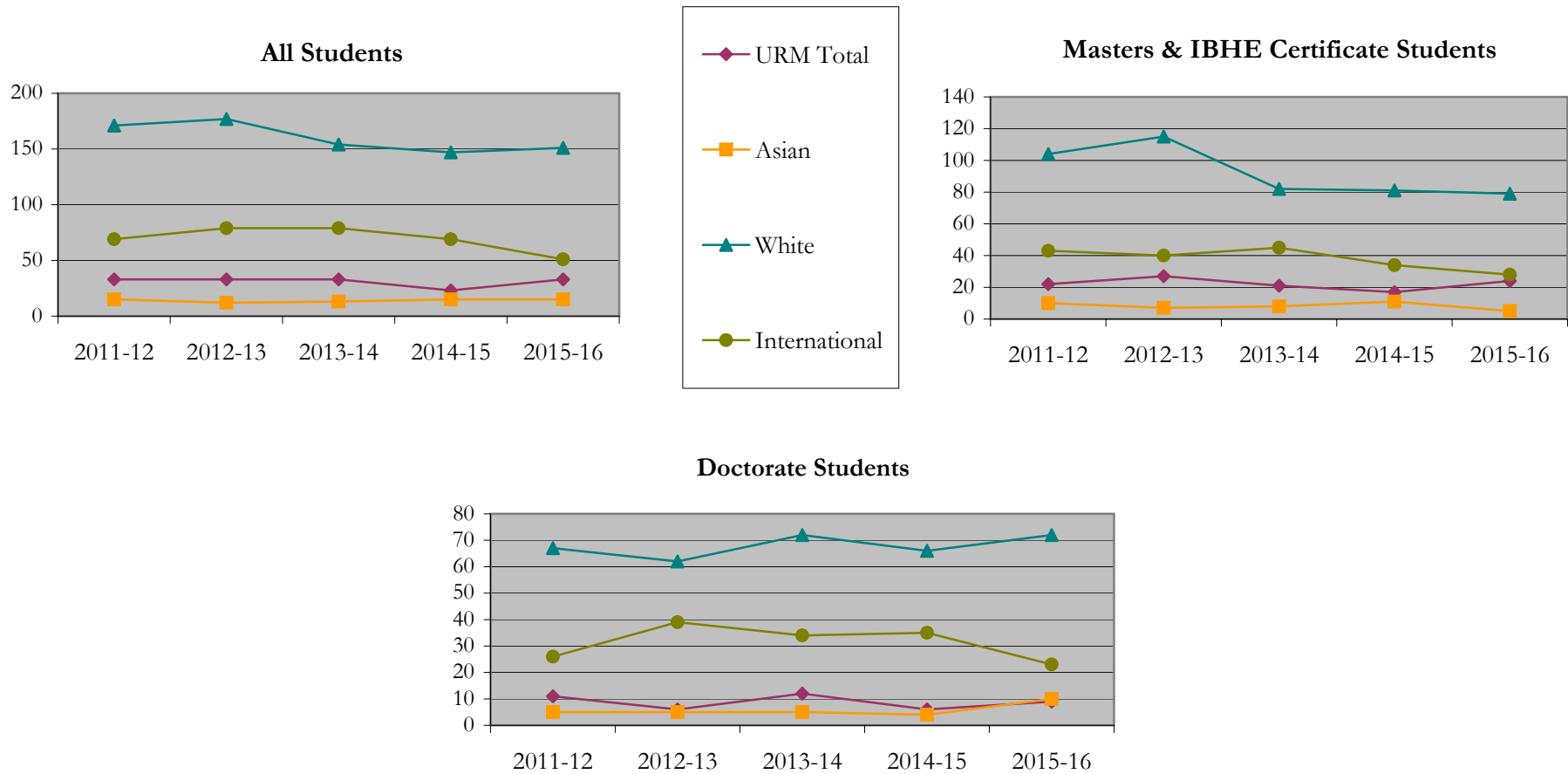
College of Liberal Arts and Sciences
Fall 2013 - Fall 2017

		Total	Under Represented Minorities (URM)								Asian	Native Hawaiian or Pacific Islander		White		Two or More Races		International		Not Reported	
			American Indian or Alaska Native		Black or African American		Hispanic / Latino		URM Total			Count	%	Count	%	Count	%	Count	%	Count	%
			Count	%	Count	%	Count	%	Count	%											
All	2012 - 13	296	0	0.0	13	4.4	20	6.8	33	11.1	15	5.1	1	0.3	171	57.8	2	0.7	69	23.3	5
	2013 - 14	308	0	0.0	7	2.3	26	8.4	33	10.7	12	3.9	0	0.0	177	57.5	2	0.6	79	25.6	5
	2014 - 15	291	0	0.0	12	4.1	21	7.2	33	11.3	13	4.5	0	0.0	154	52.9	7	2.4	79	27.1	5
	2015 - 16	270	1	0.4	6	2.2	16	5.9	23	8.5	15	5.6	0	0.0	147	54.4	9	3.3	69	25.6	7
	2016 - 17	259	0	0.0	9	3.5	24	9.3	33	12.7	15	5.8	0	0.0	151	58.3	6	2.3	51	19.7	3
Masters & IBHE Certificate	2012 - 13	185	0	0.0	8	4.3	14	7.6	22	11.9	10	5.4	1	0.5	104	56.2	2	1.1	43	23.2	3
	2013 - 14	193	0	0.0	3	1.6	24	12.4	27	14.0	7	3.6	0	0.0	115	59.6	0	0.0	40	20.7	4
	2014 - 15	165	0	0.0	5	3.0	16	9.7	21	12.7	8	4.8	0	0.0	82	49.7	5	3.0	45	27.3	4
	2015 - 16	155	1	0.6	4	2.6	12	7.7	17	11.0	11	7.1	0	0.0	81	52.3	6	3.9	34	21.9	6
	2016 - 17	143	0	0.0	3	2.1	21	14.7	24	16.8	5	3.5	0	0.0	79	55.2	4	2.8	28	19.6	3
Doctorate	2012 - 13	111	0	0.0	5	4.5	6	5.4	11	9.9	5	4.5	0	0.0	67	60.4	0	0.0	26	23.4	2
	2013 - 14	115	0	0.0	4	3.5	2	1.7	6	5.2	5	4.3	0	0.0	62	53.9	2	1.7	39	33.9	1
	2014 - 15	126	0	0.0	7	5.6	5	4.0	12	9.5	5	4.0	0	0.0	72	57.1	2	1.6	34	27.0	1
	2015 - 16	115	0	0.0	2	1.7	4	3.5	6	5.2	4	3.5	0	0.0	66	57.4	3	2.6	35	30.4	1
	2016 - 17	116	0	0.0	6	5.2	3	2.6	9	7.8	10	8.6	0	0.0	72	62.1	2	1.7	23	19.8	0
Non-Degree & Campus Certificate	2012 - 13	0	0	0.0	0	0.0	0	0.0	0	0.0	0	0.0	0	0.0	0	0.0	0	0.0	0	0.0	0
	2013 - 14	0	0	0.0	0	0.0	0	0.0	0	0.0	0	0.0	0	0.0	0	0.0	0	0.0	0	0.0	0
	2014 - 15	0	0	0.0	0	0.0	0	0.0	0	0.0	0	0.0	0	0.0	0	0.0	0	0.0	0	0.0	0
	2015 - 16	0	0	0.0	0	0.0	0	0.0	0	0.0	0	0.0	0	0.0	0	0.0	0	0.0	0	0.0	0
	2016 - 17	0	0	0.0	0	0.0	0	0.0	0	0.0	0	0.0	0	0.0	0	0.0	0	0.0	0	0.0	0

Note: Each row represents a fiscal year, beginning with Summer term and ending with Spring.

Degrees Conferred by Race/Ethnicity

College of Liberal Arts and Sciences
Fall 2013 - Fall 2017



Notes: 1) URM stands for Under-Represented Minority and includes American Indian or Alaska Native; Black or African-American; Hispanic / Latino race/ethnicity groups
 2) Individual URM groups, Native Hawaiian Pacific Islander, Two or More Races, and Other race/ethnicity categories left off this charts due to relatively low numbers

Degrees Conferred

by Gender

College of Liberal Arts and Sciences

Fall 2013 - Fall 2017

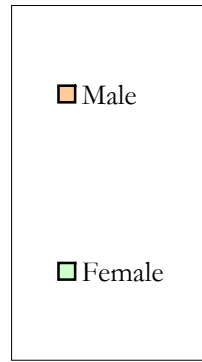
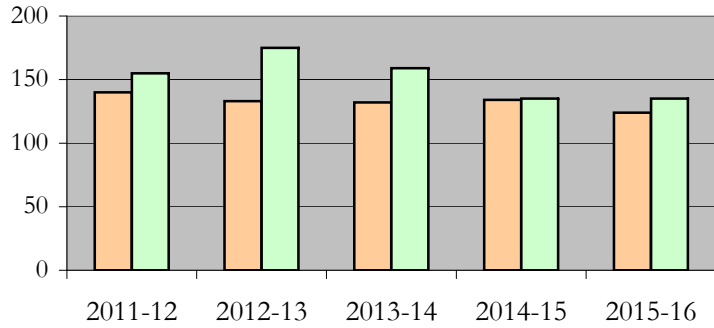
		Total	Male		Female		Not Reported
			Count	%	Count	%	
All	2012 - 13	296	140	47.3	155	52.4	1
	2013 - 14	308	133	43.2	175	56.8	0
	2014 - 15	291	132	45.4	159	54.6	0
	2015 - 16	270	134	49.6	135	50.0	1
	2016 - 17	259	124	47.9	135	52.1	0
Masters & IBHE Certificate	2012 - 13	185	85	45.9	99	53.5	1
	2013 - 14	193	73	37.8	120	62.2	0
	2014 - 15	165	79	47.9	86	52.1	0
	2015 - 16	155	74	47.7	80	51.6	1
	2016 - 17	143	61	42.7	82	57.3	0
Doctorate	2012 - 13	111	55	49.5	56	50.5	0
	2013 - 14	115	60	52.2	55	47.8	0
	2014 - 15	126	53	42.1	73	57.9	0
	2015 - 16	115	60	52.2	55	47.8	0
	2016 - 17	116	63	54.3	53	45.7	0
Campus Certificates	2012 - 13	0	0	0.0	0	0.0	0
	2013 - 14	0	0	0.0	0	0.0	0
	2014 - 15	0	0	0.0	0	0.0	0
	2015 - 16	0	0	0.0	0	0.0	0
	2016 - 17	0	0	0.0	0	0.0	0

Note: Each row represents a fiscal year, beginning with Summer term and ending with Spring.

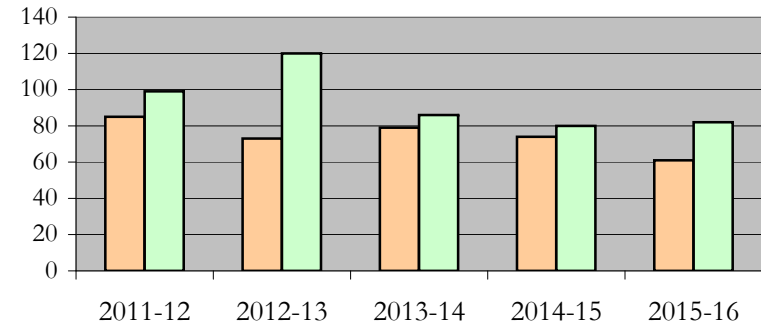
Degrees Conferred by Gender

College of Liberal Arts and Sciences
Fall 2013 - Fall 2017

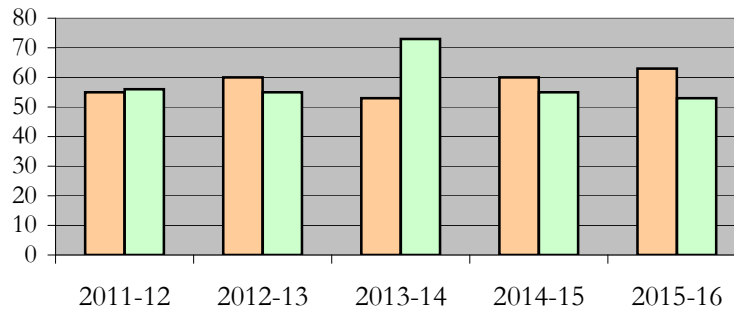
All Students



Masters & IBHE Certificate Students



Doctorate Students



Appendix A

College of Liberal Arts and Sciences

Fall 2013 - Fall 2017

List of program codes included in this document

20FS0074MA	20FS0343MA	20FS1901DA
20FS0074NDEG	20FS0343PHD	20FS5026NDEG
20FS0074PHD	20FS0344MA	20FS5130MA
20FS0240MS	20FS0344PHD	20FS5130NDEG
20FS0240NDEG	20FS0439MS	20FS5130PHD
20FS0240PHD	20FS0439NDEG	20FS5293MA
20FS0290MST	20FS0439PHD	20FS5293NDEG
20FS0297MAT	20FS1072MS	20FS9953PHD
20FS0301MA	20FS1072PHD	
20FS0301NDEG	20FS1113MA	
20FS0302PHD	20FS1174MS	
20FS0311MA	20FS1174NDEG	
20FS0311NDEG	20FS1174PHD	
20FS0311PHD	20FS1238MA	
20FS0332MA	20FS1292MA	
20FS0332PHD	20FS1292NDEG	
20FS0335MS	20FS1292PHD	
20FS0335NDEG	20FS1312MA	
20FS0335PHD	20FS1312NDEG	
20FS0338MA	20FS1405MA	
20FS0338PHD	20FS1405NDEG	
20FS0340MA	20FS1439MS	
20FS0340PHD	20FS1684MA	
20FS0342MA	20FS1684PHD	
20FS0342NDEG	20FS1757MAT	
20FS0342PHD	20FS1900PHD	

Notes: 1) Program codes are sorted by alphabetical order in column-wise fashion

2) Program codes highlighted in yellow did not have applications, enrollment, nor degrees conferred in the covered period