

Matriculation

Diversity Pipeline

Sociology_PHD [20FS0344PHD]

Fall 2013 through Fall 2017

Fall Semester Year	Applied					Admitted					Non-URM Admitted to Applied Yield %	URM Admitted to Applied Yield %	New Enrollment					Non-URM Enrolled to Admitted Yield %	URM Enrolled to Admitted Yield %	Total Enrollment				
	Grand Total	Non-URM Total		URM Total		Grand Total	Non-URM Total		URM Total				Grand Total	Non-URM Total		URM Total				Grand Total	Non-URM Total		URM Total	
		Count	%	Count	%		Count	%	Count	%				Count	%	Count	%				Count	%	Count	%
	Count	%	Count	%	Count	%	Count	%	Count	%			Count	%	Count	%	Count			%	Count	%	Count	%
2013	87	65	74.7%	22	25.3%	17	13	76.5%	4	23.5%	20.0%	18.2%	7	6	85.7%	1	14.3%	46.2%	25.0%	58	44	75.9%	14	24.1%
2014	76	54	71.1%	22	28.9%	20	13	65.0%	7	35.0%	24.1%	31.8%	10	7	70.0%	3	30.0%	53.8%	42.9%	63	47	74.6%	16	25.4%
2015	71	45	63.4%	26	36.6%	20	13	65.0%	7	35.0%	28.9%	26.9%	7	5	71.4%	2	28.6%	38.5%	28.6%	61	47	77.0%	14	23.0%
2016	63	44	69.8%	19	30.2%	14	9	64.3%	5	35.7%	20.5%	26.3%	6	5	83.3%	1	16.7%	55.6%	20.0%	65	49	75.4%	16	24.6%
2017	64	47	73.4%	17	26.6%	12	6	50.0%	6	50.0%	12.8%	35.3%	5	4	80.0%	1	20.0%	66.7%	16.7%	62	47	75.8%	15	24.2%
Average	72	51	70.6%	21	29.4%	17	11	65.1%	6	34.9%	21.2%	27.4%	7	5	77.1%	2	22.9%	50.0%	27.6%	62	47	75.7%	15	24.3%

Note: URM stands for Under-Represented Minority and includes American Indian or Alaska Native; Black or African-American; Hispanic / Latino race/ethnicity groups

Applications, Admission, & New Enrollment Yields

by Race/Ethnicity & Gender

Sociology_PHD [20FS0344PHD]

Fall 2013 through Fall 2017

	Fall Semester Year	Total	Under Represented Minorities (URM)									Asian	Native Hawaiian or Pacific Islander	White	Two or More Races	International	Race/Eth Not Reported	Male	Female								
			American Indian or Alaska Native		Black or African American		Hispanic / Latino		URM Total																		
Applied	2013	87	0	12	10	22	2	0	44	5	11	3	21	65													
	2014	76	0	11	11	22	2	1	35	3	9	4	22	54													
	2015	71	0	11	15	26	6	0	24	3	10	2	23	48													
	2016	63	0	11	8	19	1	0	28	3	11	1	18	44													
	2017	64	0	10	7	17	1	0	26	3	16	1	20	43													
		Count	% Yield	Count	% Yield	Count	% Yield	Count	% Yield	Count	% Yield	Count	% Yield	Count	% Yield	Count	% Yield	Count	% Yield	Count	% Yield						
Admitted	2013	17	19.5	0	0.0	2	16.7	2	20.0	4	18.2	1	50.0	0	0.0	9	20.5	1	20.0	1	9.1	1	2	9.5	15	23.1	
	2014	20	26.3	0	0.0	3	27.3	4	36.4	7	31.8	0	0.0	0	0.0	7	20.0	2	66.7	2	22.2	2	6	27.3	14	25.9	
	2015	20	28.2	0	0.0	3	27.3	4	26.7	7	26.9	1	16.7	0	0.0	8	33.3	1	33.3	2	20.0	1	7	30.4	13	27.1	
	2016	14	22.2	0	0.0	2	18.2	3	37.5	5	26.3	0	0.0	0	0.0	7	25.0	1	33.3	1	9.1	0	5	27.8	9	20.5	
	2017	12	18.8	0	0.0	4	40.0	2	28.6	6	35.3	0	0.0	0	0.0	3	11.5	1	33.3	2	12.5	0	5	25.0	7	16.3	
		Count	% Yield	Count	% Yield	Count	% Yield	Count	% Yield	Count	% Yield	Count	% Yield	Count	% Yield	Count	% Yield	Count	% Yield	Count	% Yield	Count	% Yield	Count	% Yield	Count	% Yield
Enrolled	2013	7	41.2	0	0.0	1	50.0	0	0.0	1	25.0	0	0.0	0	0.0	6	66.7	0	0.0	0	0.0	0	1	50.0	6	40.0	
	2014	10	50.0	0	0.0	1	33.3	2	50.0	3	42.9	0	0.0	0	0.0	6	85.7	0	0.0	1	50.0	0	4	66.7	6	42.9	
	2015	7	35.0	0	0.0	1	33.3	1	25.0	2	28.6	1	100.0	0	0.0	4	50.0	0	0.0	0	0.0	0	2	28.6	5	38.5	
	2016	6	42.9	0	0.0	0	0.0	1	33.3	1	20.0	0	0.0	0	0.0	3	42.9	1	100.0	1	100.0	0	2	40.0	4	44.4	
	2017	5	41.7	0	0.0	1	25.0	0	0.0	1	16.7	0	0.0	0	0.0	2	66.7	0	0.0	2	100.0	0	3	60.0	2	28.6	

Notes:

- 1) URM stands for Under-Represented Minority and includes American Indian or Alaska Native; Black or African-American; Hispanic / Latino race/ethnicity groups
- 2) Unreported Gender identification is not shown; Male and Female total may not match Total
- 3) In rare situations, the "% Yield" columns may be greater than 100. There are three potential reasons for this:
 - a) Students that received Graduate College approved transfers may not have an admission record for the program that they enrolled into.
 - b) Students with a secondary curriculum enrollment may not have an admission record for that secondary program.
 - c) Students who were newly enrolled in the summer term prior to the fall were added to the fall new enrollment totals.

Applications, Admission, & New Enrollment Yields, cont. by Race/Ethnicity & Gender

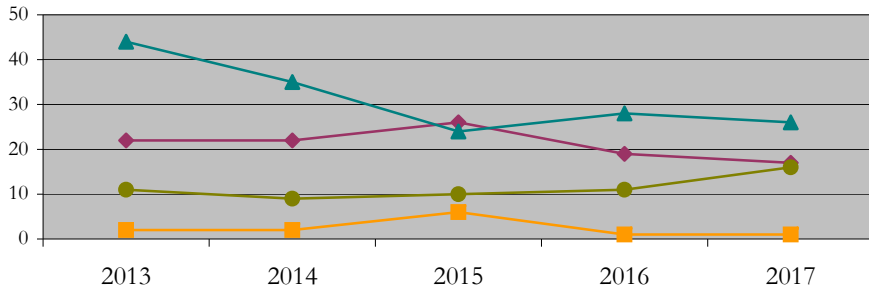
Sociology_PHD [20FS0344PHD]

Fall 2013 through Fall 2017

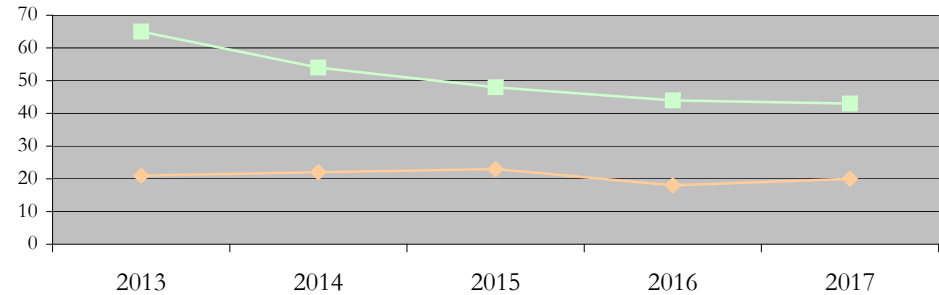
URM Total Asian White International

Male Female

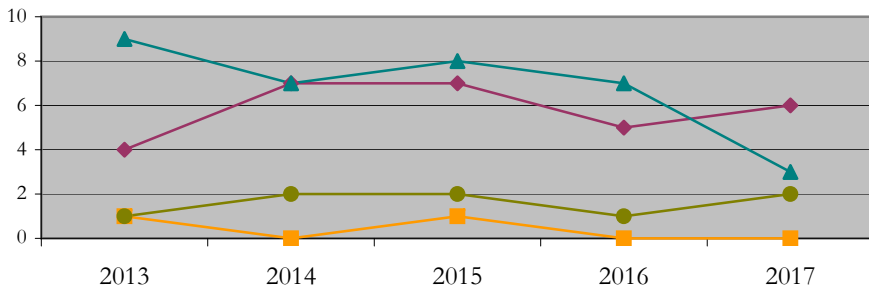
Applications by Race/Ethnicity



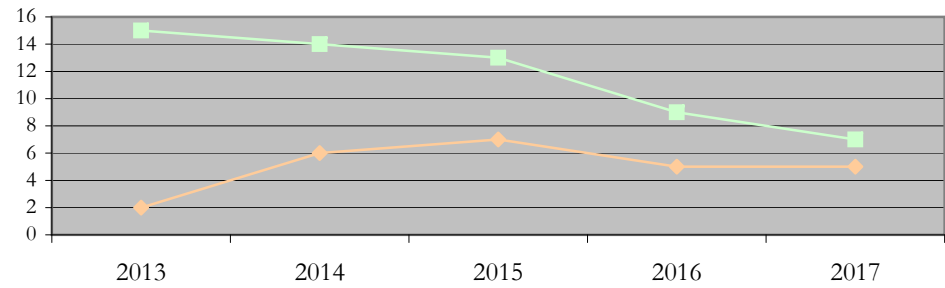
Applications by Gender



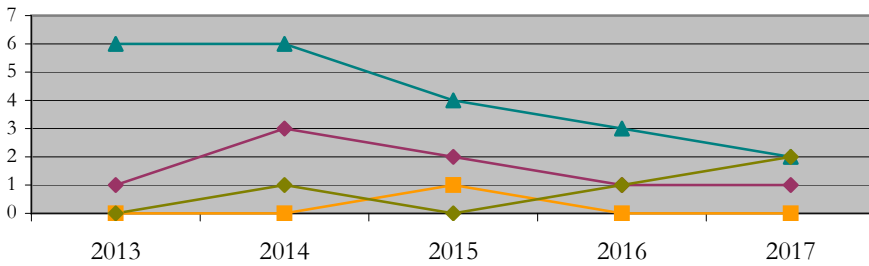
Admissions by Race/Ethnicity



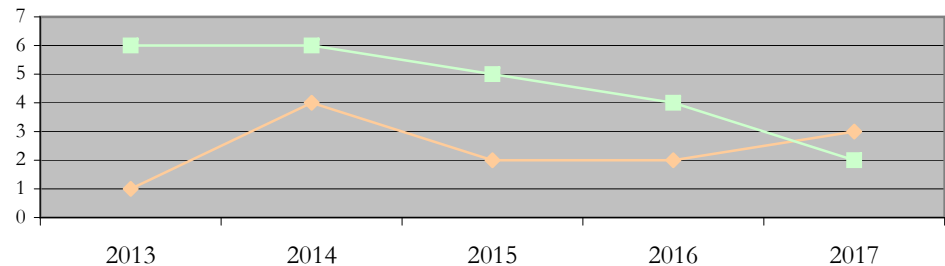
Admissions by Gender



New Enrollments by Race/Ethnicity



New Enrollments by Gender



Notes: 1) URM stands for Under-Represented Minority and includes American Indian or Alaska Native; Black or African-American; Hispanic / Latino race/ethnicity groups
2) Individual URM groups, Native Hawaiian Pacific Islander, Two or More Races, and Other race/ethnicity categories left off these charts due to relatively low numbers

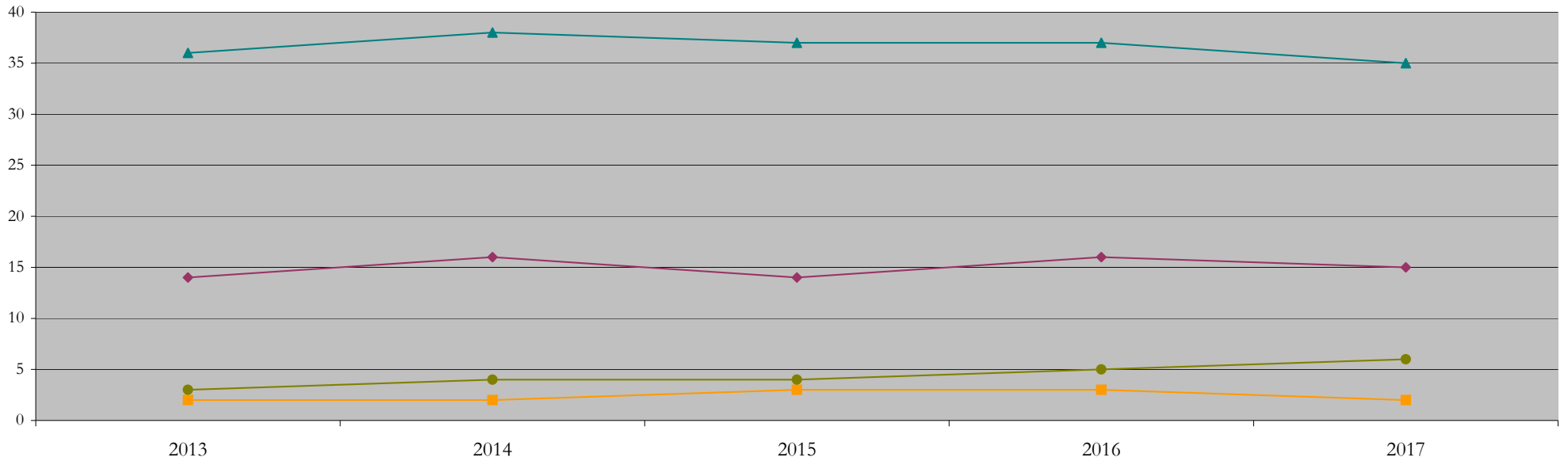
Total Enrollment (includes secondary curriculum)

by Race/Ethnicity

Sociology_PHD [20FS0344PHD]

Fall 2013 through Fall 2017

Fall Semester Year	Total	Under Represented Minorities (URM)																		
		American Indian or Alaska Native		Black or African American		Hispanic / Latino		URM Total		Asian		Native Hawaiian or Pacific Islander		White		Two or More Races		International		Race/Eth Not Reported
		Count	%	Count	%	Count	%	Count	%	Count	%	Count	%	Count	%	Count	%	Count	%	Count
2013	58	0	0.0	7	12.1	7	12.1	14	24.1	2	3.4	0	0.0	36	62.1	2	3.4	3	5.2	1
2014	63	0	0.0	8	12.7	8	12.7	16	25.4	2	3.2	0	0.0	38	60.3	2	3.2	4	6.3	1
2015	61	0	0.0	9	14.8	5	8.2	14	23.0	3	4.9	0	0.0	37	60.7	2	3.3	4	6.6	1
2016	65	0	0.0	9	13.8	7	10.8	16	24.6	3	4.6	0	0.0	37	56.9	2	3.1	5	7.7	2
2017	62	0	0.0	11	17.7	4	6.5	15	24.2	2	3.2	0	0.0	35	56.5	2	3.2	6	9.7	2



Notes: 1) URM stands for Under-Represented Minority and includes American Indian or Alaska Native; Black or African-American; Hispanic / Latino race/ethnicity groups
 2) Individual URM groups, Native Hawaiian Pacific Islander, Two or More Races, and Other race/ethnicity categories left off this chart due to relatively low numbers

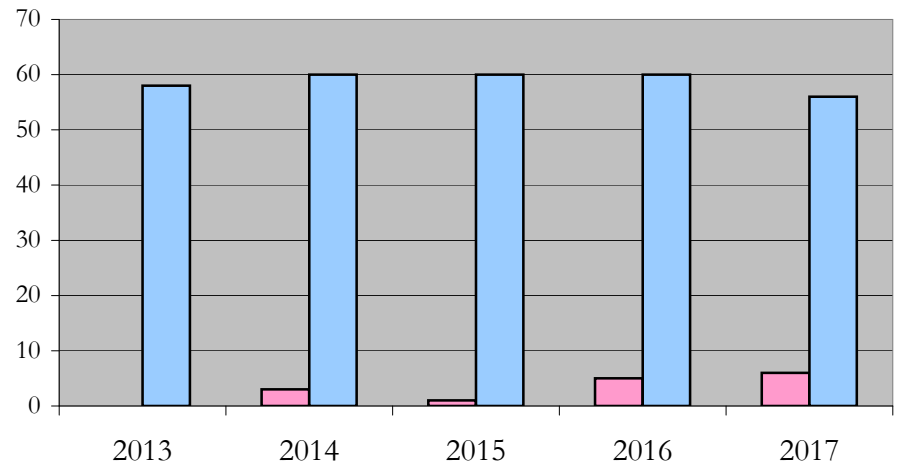
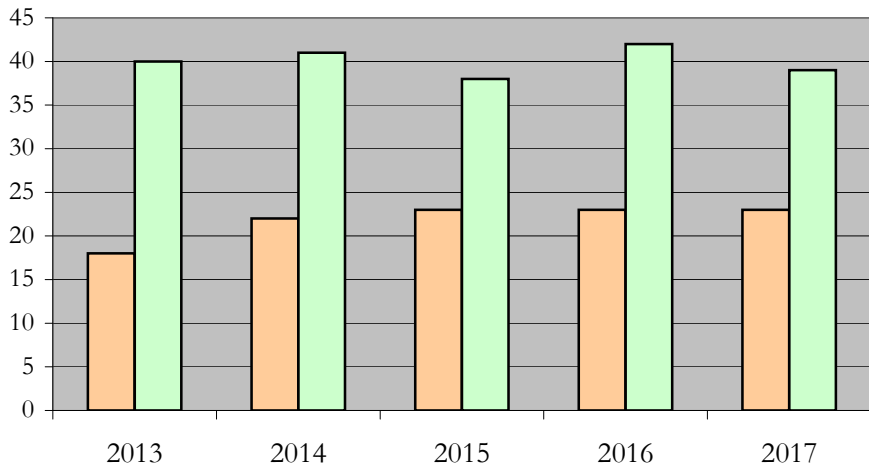
Total Enrollment (includes secondary curriculum)

by Student Type, Gender, and Enrollment Time

Sociology_PHD [20FS0344PHD]

Fall 2013 through Fall 2017

Fall Semester Year	Total	New		Continuing		Male		Female		Gender Not Reported	Part-time		Full-time	
		Count	%	Count	%	Count	%	Count	%	Count	Count	%	Count	%
2013	58	7	12.1	51	87.9	18	31.0	40	69.0	0	0	0.0	58	100.0
2014	63	10	15.9	53	84.1	22	34.9	41	65.1	0	3	4.8	60	95.2
2015	61	7	11.5	54	88.5	23	37.7	38	62.3	0	1	1.6	60	98.4
2016	65	6	9.2	59	90.8	23	35.4	42	64.6	0	5	7.7	60	92.3
2017	62	5	8.1	57	91.9	23	37.1	39	62.9	0	6	9.7	56	90.3



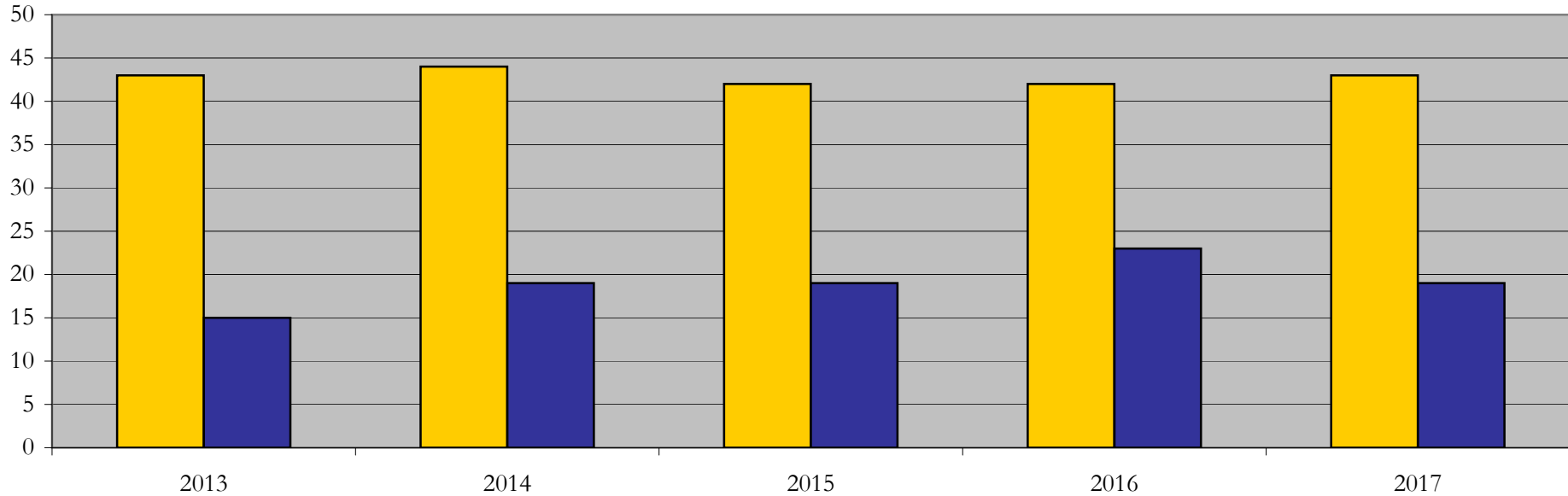
Enrollment & Degrees Conferred

by Primary/Secondary, Average Age, State Residency

Sociology_PHD [20FS0344PHD]

Fall 2013 through Fall 2017

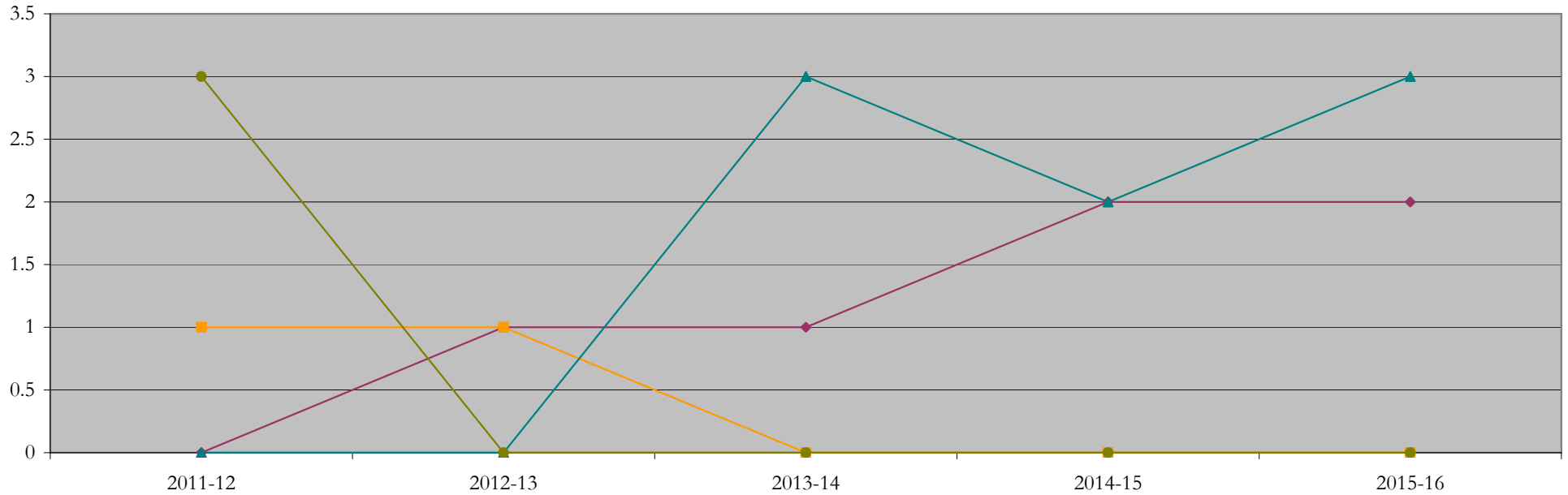
Fall Semester Year	Enrollment			Average Age			State Residency of Total Enrollment					
	Total	Primary	Secondary	Fall New Enrollment	Fall Continuing Enrollment	Academic Year Graduating Class	Residents			Non-Residents		
							Total Enrollment	New Enrollment	Continuing Enrollment	Total Enrollment	New Enrollment	Continuing Enrollment
2013	58	58	0	26	30	34	43	6	37	15	1	14
2014	63	63	0	28	31	33	44	5	39	19	5	14
2015	61	61	0	28	31	29	42	5	37	19	2	17
2016	65	65	0	26	32	32	42	2	40	23	4	19
2017	62	62	0	24	32	33	43	4	39	19	1	18



Degrees Conferred by Race/Ethnicity

Sociology_PHD [20FS0344PHD]
AY2011-12 through 2015-16

Academic Year	Total	Under Represented Minorities (URM)								Asian	Native Hawaiian or Pacific	White	Two or More Races	International	Not Reported			
		American Indian or Alaska Native		Black or African American		Hispanic / Latino		URM Total										
		Count	%	Count	%	Count	%	Count	%									
2012 - 2013	4	0	0.0	0	0.0	0	0.0	0	0.0	1	25.0	0	0.0	0	0.0	3	75.0	0
2013 - 2014	2	0	0.0	0	0.0	1	50.0	1	50.0	1	50.0	0	0.0	0	0.0	0	0.0	0
2014 - 2015	4	0	0.0	1	25.0	0	0.0	1	25.0	0	0.0	0	0.0	3	75.0	0	0.0	0
2015 - 2016	4	0	0.0	1	25.0	1	25.0	2	50.0	0	0.0	0	0.0	2	50.0	0	0.0	0
2016 - 2017	5	0	0.0	1	20.0	1	20.0	2	40.0	0	0.0	0	0.0	3	60.0	0	0.0	0



Notes: 1) URM stands for Under-Represented Minority and includes American Indian or Alaska Native; Black or African-American; Hispanic / Latino race/ethnicity groups
2) Individual URM groups, Native Hawaiian Pacific Islander, Two or More Races, and Other race/ethnicity categories left off this chart due to relatively low numbers

Degrees Conferred

by Gender

Sociology_PHD [20FS0344PHD]

AY2011-12 through 2015-16

Academic Year	Total	Male		Female		Not Reported
		Count	%	Count	%	
2012 - 2013	4	1	25.0	3	75.0	0
2013 - 2014	2	1	50.0	1	50.0	0
2014 - 2015	4	0	0.0	4	100.0	0
2015 - 2016	4	1	25.0	3	75.0	0
2016 - 2017	5	1	20.0	4	80.0	0

