

# Matriculation

## Diversity Pipeline

Psychology\_PHD [20FS0338PHD]

Fall 2013 through Fall 2017

Fall Semester Year	Applied					Admitted					Non-URM Admitted to Applied Yield %	URM Admitted to Applied Yield %	New Enrollment					Non-URM Enrolled to Admitted Yield %	URM Enrolled to Admitted Yield %	Total Enrollment				
	Grand Total	Non-URM Total		URM Total		Grand Total	Non-URM Total		URM Total				Grand Total	Non-URM Total		URM Total				Grand Total	Non-URM Total		URM Total	
		Count	%	Count	%		Count	%	Count	%				Count	%	Count	%				Count	%	Count	%
	Count	%	Count	%	Count	%	Count	%	Count	%			Count	%	Count	%	Count			%	Count	%	Count	%
2013	618	506	81.9%	112	18.1%	16	15	93.8%	1	6.3%	3.0%	0.9%	16	15	93.8%	1	6.3%	100.0%	100.0%	98	85	86.7%	13	13.3%
2014	524	447	85.3%	77	14.7%	30	28	93.3%	2	6.7%	6.3%	2.6%	16	15	93.8%	1	6.3%	53.6%	50.0%	97	88	90.7%	9	9.3%
2015	397	324	81.6%	73	18.4%	22	18	81.8%	4	18.2%	5.6%	5.5%	13	10	76.9%	3	23.1%	55.6%	75.0%	93	83	89.2%	10	10.8%
2016	394	340	86.3%	54	13.7%	31	29	93.5%	2	6.5%	8.5%	3.7%	14	13	92.9%	1	7.1%	44.8%	50.0%	87	78	89.7%	9	10.3%
2017	438	357	81.5%	81	18.5%	29	23	79.3%	6	20.7%	6.4%	7.4%	14	10	71.4%	4	28.6%	43.5%	66.7%	85	72	84.7%	13	15.3%
<b>Average</b>	<b>474</b>	<b>395</b>	<b>83.3%</b>	<b>79</b>	<b>16.7%</b>	<b>26</b>	<b>23</b>	<b>88.3%</b>	<b>3</b>	<b>11.7%</b>	<b>5.7%</b>	<b>3.8%</b>	<b>15</b>	<b>13</b>	<b>86.3%</b>	<b>2</b>	<b>13.7%</b>	<b>55.8%</b>	<b>66.7%</b>	<b>92</b>	<b>81</b>	<b>88.3%</b>	<b>10.8</b>	<b>11.7%</b>

**Note:** URM stands for Under-Represented Minority and includes American Indian or Alaska Native; Black or African-American; Hispanic / Latino race/ethnicity groups

# Applications, Admission, & New Enrollment Yields

## by Race/Ethnicity & Gender

Psychology\_PHD [20FS0338PHD]

Fall 2013 through Fall 2017

	Fall Semester Year	Total	Under Represented Minorities (URM)										Race/Eth Not Reported	Male	Female											
			American Indian or Alaska Native		Black or African American		Hispanic / Latino		URM Total		Asian					Native Hawaiian or Pacific Islander		White		Two or More Races		International				
			Count	% Yield	Count	% Yield	Count	% Yield	Count	% Yield	Count	% Yield	Count	% Yield	Count	% Yield	Count	% Yield	Count	% Yield	Count	% Yield	Count	% Yield	Count	% Yield
Applied	2013	618	1		57		54		112		45		0		353		26		59		23		147		470	
	2014	524	1		30		46		77		37		2		324		23		41		20		111		411	
	2015	397	0		27		46		73		16		0		231		15		45		17		108		288	
	2016	394	1		15		38		54		32		1		236		16		41		14		89		301	
	2017	438	0		35		46		81		34		0		253		11		39		20		92		340	
			Count	% Yield	Count	% Yield	Count	% Yield	Count	% Yield	Count	% Yield	Count	% Yield	Count	% Yield	Count	% Yield	Count	% Yield	Count	% Yield	Count	% Yield	Count	% Yield
Admitted	2013	16	2.6	0	0.0	0	0.0	1	1.9	1	0.9	2	4.4	0	0.0	10	2.8	2	7.7	1	1.7	0	5	3.4	11	2.3
	2014	30	5.7	0	0.0	0	0.0	2	4.3	2	2.6	0	0.0	0	0.0	25	7.7	1	4.3	0	0.0	2	10	9.0	19	4.6
	2015	22	5.5	0	0.0	0	0.0	4	8.7	4	5.5	2	12.5	0	0.0	13	5.6	2	13.3	1	2.2	0	5	4.6	17	5.9
	2016	31	7.9	0	0.0	1	6.7	1	2.6	2	3.7	5	15.6	0	0.0	21	8.9	0	0.0	0	0.0	3	8	9.0	22	7.3
	2017	29	6.6	0	0.0	2	5.7	4	8.7	6	7.4	2	5.9	0	0.0	16	6.3	0	0.0	2	5.1	3	6	6.5	23	6.8
			Count	% Yield	Count	% Yield	Count	% Yield	Count	% Yield	Count	% Yield	Count	% Yield	Count	% Yield	Count	% Yield	Count	% Yield	Count	% Yield	Count	% Yield	Count	% Yield
Enrolled	2013	16	100.0	0	0.0	0	0.0	1	100.0	1	100.0	2	100.0	0	0.0	10	100.0	2	100.0	1	100.0	0	5	100.0	11	100.0
	2014	16	53.3	0	0.0	0	0.0	1	50.0	1	50.0	0	0.0	0	0.0	15	60.0	0	0.0	0	0.0	0	6	60.0	10	52.6
	2015	13	59.1	0	0.0	0	0.0	3	75.0	3	75.0	1	50.0	0	0.0	8	61.5	0	0.0	1	100.0	0	4	80.0	9	52.9
	2016	14	45.2	0	0.0	0	0.0	1	100.0	1	50.0	1	20.0	0	0.0	12	57.1	0	0.0	0	0.0	0	4	50.0	10	45.5
	2017	14	48.3	0	0.0	0	0.0	4	100.0	4	66.7	2	100.0	0	0.0	7	43.8	0	0.0	1	50.0	0	3	50.0	11	47.8

**Notes:**

- 1) URM stands for Under-Represented Minority and includes American Indian or Alaska Native; Black or African-American; Hispanic / Latino race/ethnicity groups
- 2) Unreported Gender identification is not shown; Male and Female total may not match Total
- 3) In rare situations, the "% Yield" columns may be greater than 100. There are three potential reasons for this:
  - a) Students that received Graduate College approved transfers may not have an admission record for the program that they enrolled into.
  - b) Students with a secondary curriculum enrollment may not have an admission record for that secondary program.
  - c) Students who were newly enrolled in the summer term prior to the fall were added to the fall new enrollment totals.

# Applications, Admission, & New Enrollment Yields, cont. by Race/Ethnicity & Gender

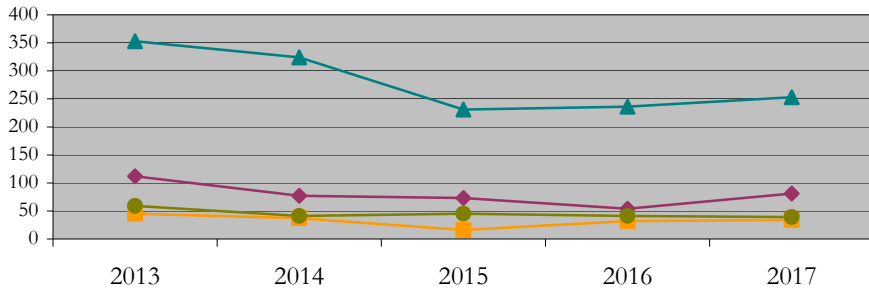
Psychology\_PHD [20FS0338PHD]

Fall 2013 through Fall 2017

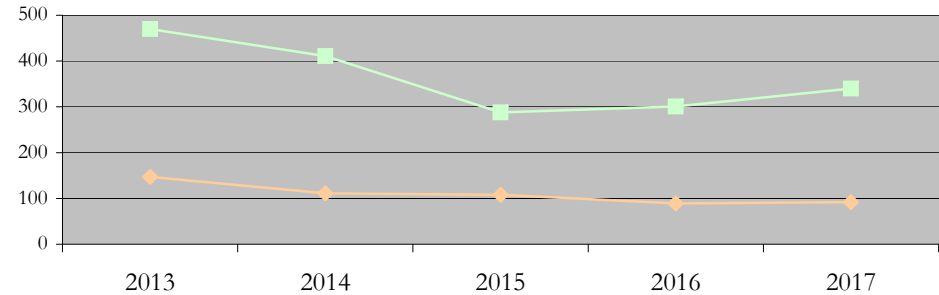
URM Total Asian White International

Male Female

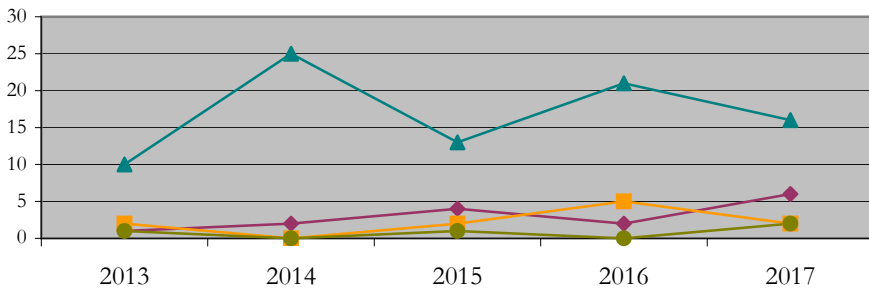
Applications by Race/Ethnicity



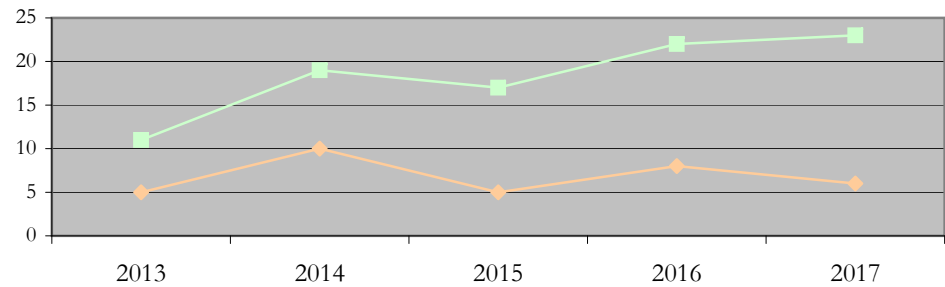
Applications by Gender



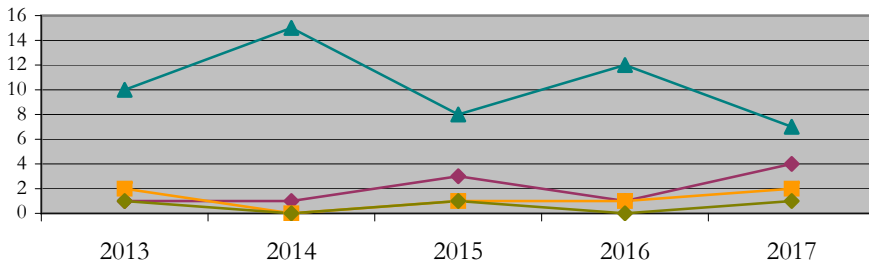
Admissions by Race/Ethnicity



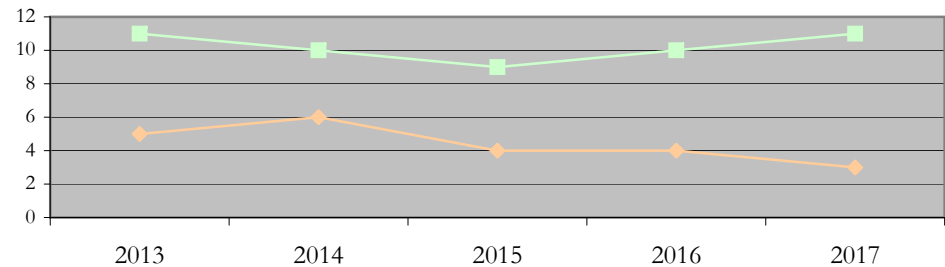
Admissions by Gender



New Enrollments by Race/Ethnicity



New Enrollments by Gender



**Notes:** 1) URM stands for Under-Represented Minority and includes American Indian or Alaska Native; Black or African-American; Hispanic / Latino race/ethnicity groups  
2) Individual URM groups, Native Hawaiian Pacific Islander, Two or More Races, and Other race/ethnicity categories left off these charts due to relatively low numbers

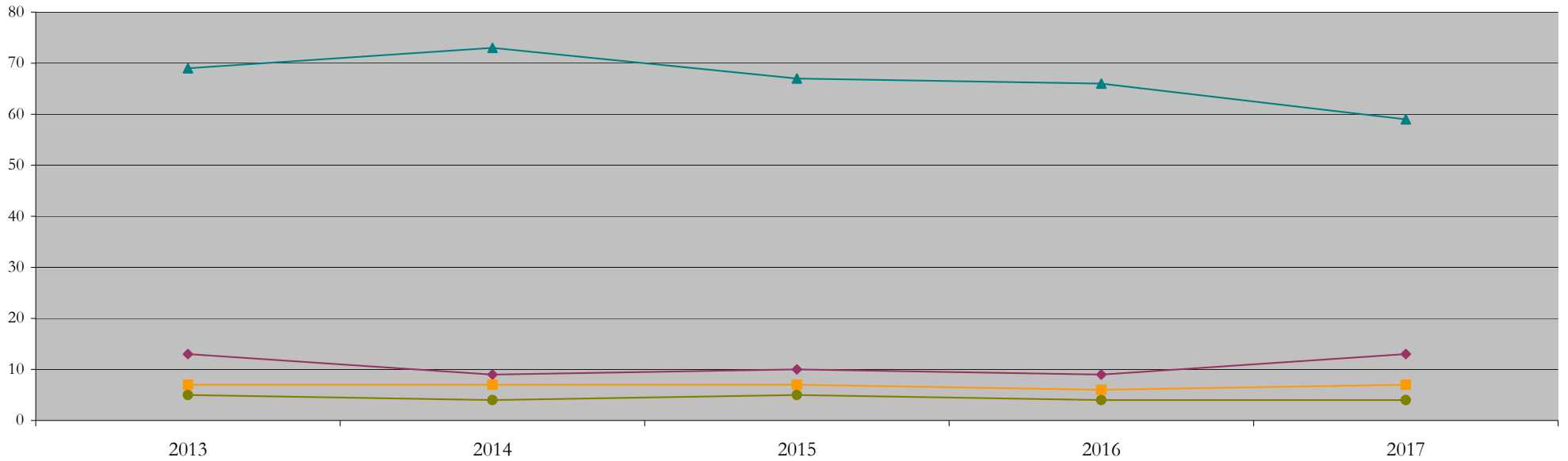
**Total Enrollment (includes secondary curriculum)**

**by Race/Ethnicity**

Psychology\_PHD [20FS0338PHD]

Fall 2013 through Fall 2017

Fall Semester Year	Total	Under Represented Minorities (URM)																		
		American Indian or Alaska Native		Black or African American		Hispanic / Latino		URM Total		Asian		Native Hawaiian or Pacific Islander		White		Two or More Races		International		Race/Eth Not Reported
		Count	%	Count	%	Count	%	Count	%	Count	%	Count	%	Count	%	Count	%	Count	%	Count
2013	98	0	0.0	7	7.1	6	6.1	13	13.3	7	7.1	0	0.0	69	70.4	4	4.1	5	5.1	0
2014	97	0	0.0	4	4.1	5	5.2	9	9.3	7	7.2	0	0.0	73	75.3	4	4.1	4	4.1	0
2015	93	0	0.0	2	2.2	8	8.6	10	10.8	7	7.5	0	0.0	67	72.0	4	4.3	5	5.4	0
2016	87	0	0.0	0	0.0	9	10.3	9	10.3	6	6.9	0	0.0	66	75.9	2	2.3	4	4.6	0
2017	85	0	0.0	0	0.0	13	15.3	13	15.3	7	8.2	0	0.0	59	69.4	2	2.4	4	4.7	0



**Notes:** 1) URM stands for Under-Represented Minority and includes American Indian or Alaska Native; Black or African-American; Hispanic / Latino race/ethnicity groups  
 2) Individual URM groups, Native Hawaiian Pacific Islander, Two or More Races, and Other race/ethnicity categories left off this chart due to relatively low numbers

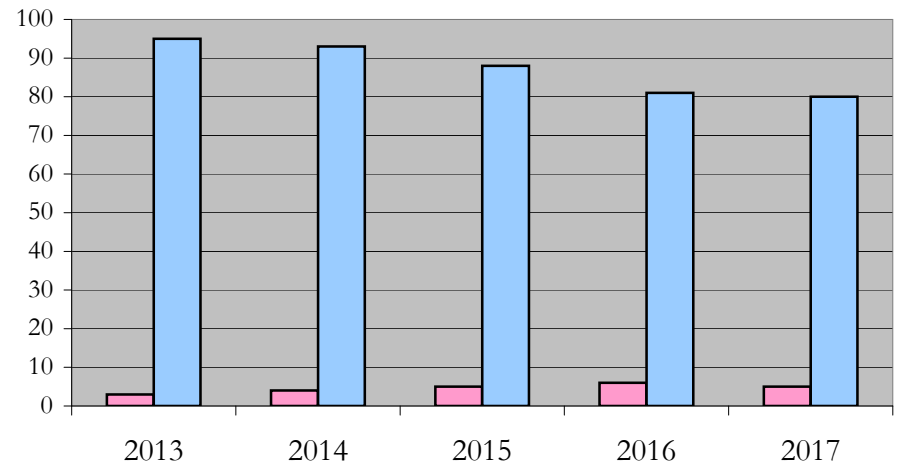
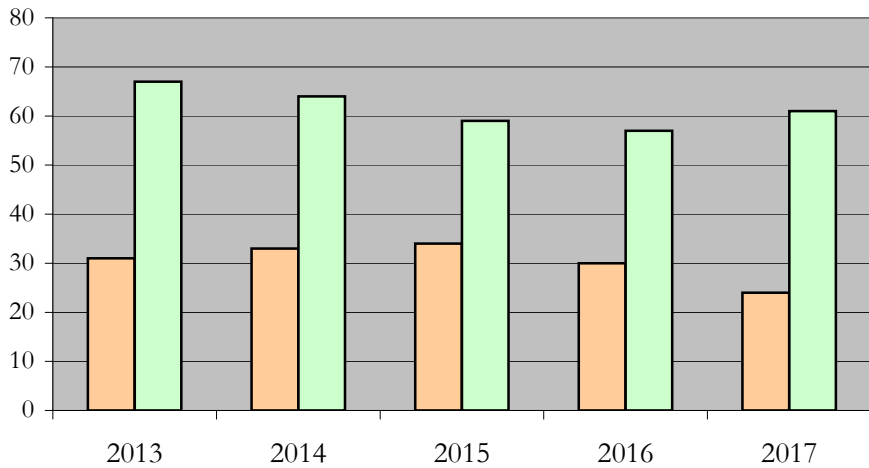
**Total Enrollment (includes secondary curriculum)**

**by Student Type, Gender, and Enrollment Time**

Psychology\_PHD [20FS0338PHD]

Fall 2013 through Fall 2017

Fall Semester Year	Total	New		Continuing		Male		Female		Gender Not Reported	Part-time		Full-time	
		Count	%	Count	%	Count	%	Count	%	Count	Count	%	Count	%
2013	98	16	16.3	82	83.7	31	31.6	67	68.4	0	3	3.1	95	96.9
2014	97	16	16.5	81	83.5	33	34.0	64	66.0	0	4	4.1	93	95.9
2015	93	13	14.0	80	86.0	34	36.6	59	63.4	0	5	5.4	88	94.6
2016	87	14	16.1	73	83.9	30	34.5	57	65.5	0	6	6.9	81	93.1
2017	85	14	16.5	71	83.5	24	28.2	61	71.8	0	5	5.9	80	94.1



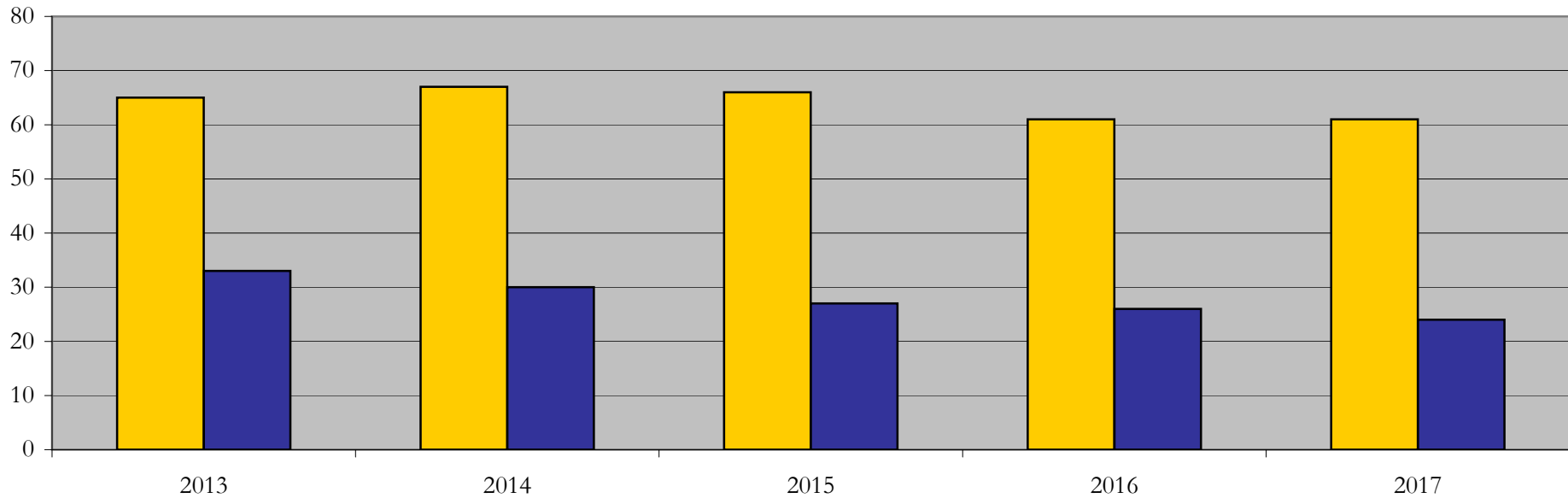
## Enrollment & Degrees Conferred

### by Primary/Secondary, Average Age, State Residency

Psychology\_PHD [20FS0338PHD]

Fall 2013 through Fall 2017

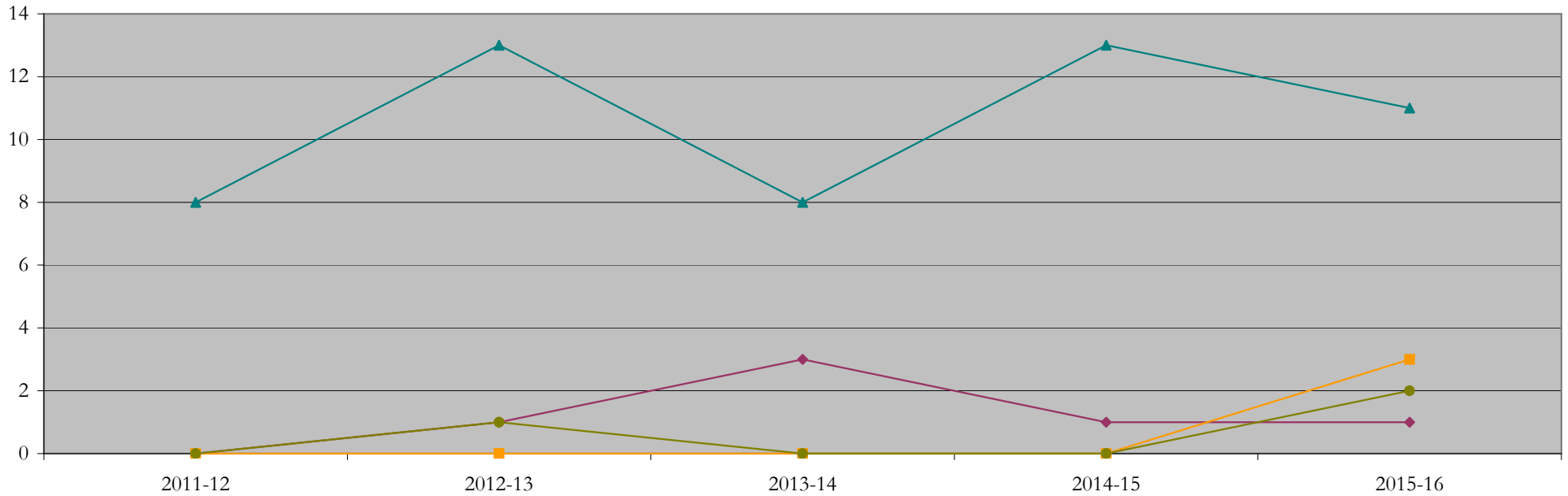
Fall Semester Year	Enrollment			Average Age			State Residency of Total Enrollment					
	Total	Primary	Secondary	Fall New Enrollment	Fall Continuing Enrollment	Academic Year Graduating Class	Residents			Non-Residents		
							Total Enrollment	New Enrollment	Continuing Enrollment	Total Enrollment	New Enrollment	Continuing Enrollment
2013	98	98	0	25	29	32	65	11	54	33	5	28
2014	97	97	0	26	29	30	67	15	52	30	1	29
2015	93	93	0	25	29	28	66	7	59	27	6	21
2016	87	87	0	25	28	32	61	8	53	26	6	20
2017	85	85	0	26	28	31	61	10	51	24	4	20



## Degrees Conferred by Race/Ethnicity

Psychology\_PHD [20FS0338PHD]  
AY2011-12 through 2015-16

Academic Year	Total	Under Represented Minorities (URM)								Asian		Native Hawaiian or Pacific		White		Two or More Races		International		Not Reported
		American Indian or Alaska Native		Black or African American		Hispanic / Latino		URM Total		Count	%	Count	%	Count	%	Count	%	Count	%	
		Count	%	Count	%	Count	%	Count	%											
2012 - 2013	8	0	0.0	0	0.0	0	0.0	0	0.0	0	0.0	0	0.0	8	100.0	0	0.0	0	0.0	0
2013 - 2014	16	0	0.0	1	6.3	0	0.0	1	6.3	0	0.0	0	0.0	13	81.3	0	0.0	1	6.3	1
2014 - 2015	11	0	0.0	3	27.3	0	0.0	3	27.3	0	0.0	0	0.0	8	72.7	0	0.0	0	0.0	0
2015 - 2016	15	0	0.0	0	0.0	1	6.7	1	6.7	0	0.0	0	0.0	13	86.7	1	6.7	0	0.0	0
2016 - 2017	17	0	0.0	1	5.9	0	0.0	1	5.9	3	17.6	0	0.0	11	64.7	0	0.0	2	11.8	0



**Notes:** 1) URM stands for Under-Represented Minority and includes American Indian or Alaska Native; Black or African-American; Hispanic / Latino race/ethnicity groups  
2) Individual URM groups, Native Hawaiian Pacific Islander, Two or More Races, and Other race/ethnicity categories left off this chart due to relatively low numbers

## Degrees Conferred

### by Gender

Psychology\_PHD [20FS0338PHD]

AY2011-12 through 2015-16

Academic Year	Total	Male		Female		Not Reported
		Count	%	Count	%	
2012 - 2013	8	2	25.0	6	75.0	0
2013 - 2014	16	5	31.3	11	68.8	0
2014 - 2015	11	1	9.1	10	90.9	0
2015 - 2016	15	5	33.3	10	66.7	0
2016 - 2017	17	8	47.1	9	52.9	0

