

Matriculation

Diversity Pipeline

Political_Science_PHD [20FS0343PHD]

Fall 2014 through Fall 2018

Fall Semester Year	Applied					Admitted					Non-URM Admitted to Applied Yield %	URM Admitted to Applied Yield %	New Enrollment					Non-URM Enrolled to Admitted Yield %	URM Enrolled to Admitted Yield %	Total Enrollment				
	Grand Total	Non-URM Total		URM Total		Grand Total	Non-URM Total		URM Total				Grand Total	Non-URM Total		URM Total				Grand Total	Non-URM Total		URM Total	
		Count	%	Count	%		Count	%	Count	%				Count	%	Count	%				Count	%	Count	%
2014	47	40	85.1%	7	14.9%	13	11	84.6%	2	15.4%	27.5%	28.6%	2	2	100.0%	0	0.0%	18.2%	0.0%	39	34	87.2%	5	12.8%
2015	45	37	82.2%	8	17.8%	11	10	90.9%	1	9.1%	27.0%	12.5%	7	7	100.0%	0	0.0%	70.0%	0.0%	39	34	87.2%	5	12.8%
2016	28	27	96.4%	1	3.6%	13	13	100.0%	0	0.0%	48.1%	0.0%	3	3	100.0%	0	0.0%	23.1%	0.0%	40	33	82.5%	7	17.5%
2017	46	44	95.7%	2	4.3%	11	11	100.0%	0	0.0%	25.0%	0.0%	4	4	100.0%	0	0.0%	36.4%	0.0%	38	33	86.8%	5	13.2%
2018	40	36	90.0%	4	10.0%	14	12	85.7%	2	14.3%	33.3%	50.0%	6	5	83.3%	1	16.7%	41.7%	50.0%	37	32	86.5%	5	13.5%
Average	41	37	89.3%	4	10.7%	12	11	91.9%	1	8.1%	31.0%	22.7%	4	4	95.5%	0	4.5%	36.8%	20.0%	39	33	86.0%	5.4	14.0%

Note: URM stands for Under-Represented Minority and includes American Indian or Alaska Native; Black or African-American; Hispanic / Latino race/ethnicity groups

Applications, Admission, & New Enrollment Yields

by Race/Ethnicity & Gender

Political_Science_PHD [20FS0343PHD]

Fall 2014 through Fall 2018

	Fall Semester Year	Total	Under Represented Minorities (URM)								Asian	Native Hawaiian or Pacific Islander	White	Two or More Races	International	Race/Eth Not Reported	Male	Female								
			American Indian or Alaska Native		Black or African American		Hispanic / Latino		URM Total																	
Applied	2014	47	0	2	5	7	1	0	20	0	16	3	28	18												
	2015	45	0	5	3	8	1	0	15	0	19	2	24	21												
	2016	28	0	1	0	1	1	0	12	0	14	0	15	13												
	2017	46	0	0	2	2	1	0	14	0	28	1	25	21												
	2018	40	0	2	2	4	0	0	6	0	22	8	22	18												
		Count	% Yield	Count	% Yield	Count	% Yield	Count	% Yield	Count	% Yield	Count	% Yield	Count	% Yield	Count	Count	% Yield	Count	% Yield						
Admitted	2014	13	27.7	0	0.0	0	0.0	2	40.0	2	28.6	1	100.0	0	0.0	6	30.0	0	0.0	3	18.8	1	7	25.0	6	33.3
	2015	11	24.4	0	0.0	0	0.0	1	33.3	1	12.5	0	0.0	0	0.0	7	46.7	0	0.0	3	15.8	0	5	20.8	6	28.6
	2016	13	46.4	0	0.0	0	0.0	0	0.0	0	0.0	1	100.0	0	0.0	8	66.7	0	0.0	4	28.6	0	4	26.7	9	69.2
	2017	11	23.9	0	0.0	0	0.0	0	0.0	0	0.0	1	100.0	0	0.0	5	35.7	0	0.0	5	17.9	0	5	20.0	6	28.6
	2018	14	35.0	0	0.0	1	50.0	1	50.0	2	50.0	0	0.0	0	0.0	4	66.7	0	0.0	5	22.7	3	9	40.9	5	27.8
		Count	% Yield	Count	% Yield	Count	% Yield	Count	% Yield	Count	% Yield	Count	% Yield	Count	% Yield	Count	% Yield	Count	% Yield	Count	% Yield	Count	Count	% Yield	Count	% Yield
Enrolled	2014	2	15.4	0	0.0	0	0.0	0	0.0	0	0.0	0	0.0	0	0.0	2	33.3	0	0.0	0	0.0	0	2	28.6	0	0.0
	2015	7	63.6	0	0.0	0	0.0	0	0.0	0	0.0	0	0.0	0	0.0	5	71.4	0	0.0	2	66.7	0	2	40.0	5	83.3
	2016	3	23.1	0	0.0	0	0.0	0	0.0	0	0.0	0	0.0	0	0.0	2	25.0	0	0.0	1	25.0	0	0	0.0	3	33.3
	2017	4	36.4	0	0.0	0	0.0	0	0.0	0	0.0	1	100.0	0	0.0	2	40.0	0	0.0	1	20.0	0	2	40.0	2	33.3
	2018	6	42.9	0	0.0	1	100.0	0	0.0	1	50.0	0	0.0	0	0.0	2	50.0	0	0.0	3	60.0	0	4	44.4	2	40.0

Notes:

- 1) URM stands for Under-Represented Minority and includes American Indian or Alaska Native; Black or African-American; Hispanic / Latino race/ethnicity groups
- 2) Unreported Gender identification is not shown; Male and Female total may not match Total
- 3) In rare situations, the "% Yield" columns may be greater than 100. There are three potential reasons for this:
 - a) Students that received Graduate College approved transfers may not have an admission record for the program that they enrolled into.
 - b) Students with a secondary curriculum enrollment may not have an admission record for that secondary program.
 - c) Students who were newly enrolled in the summer term prior to the fall were added to the fall new enrollment totals.

Applications, Admission, & New Enrollment Yields, cont. by Race/Ethnicity & Gender

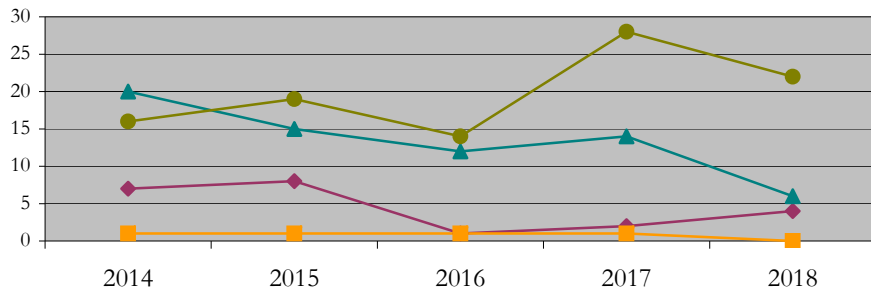
Political_Science_PHD [20FS0343PHD]

Fall 2014 through Fall 2018

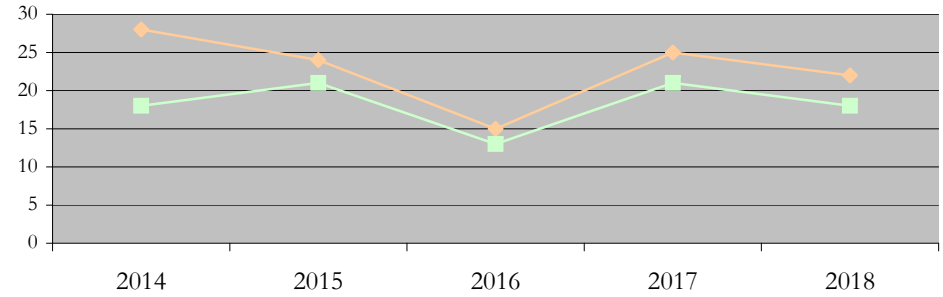
URM Total Asian White International

Male Female

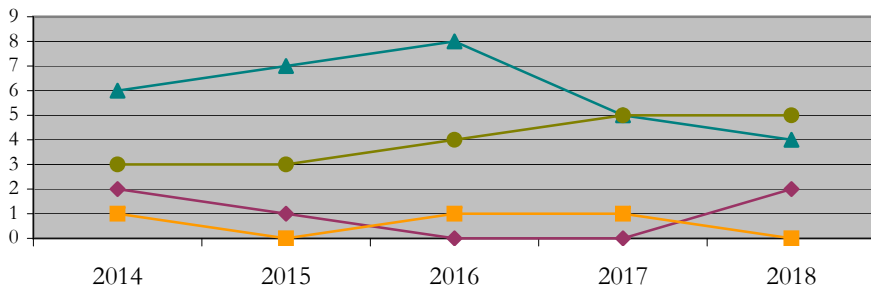
Applications by Race/Ethnicity



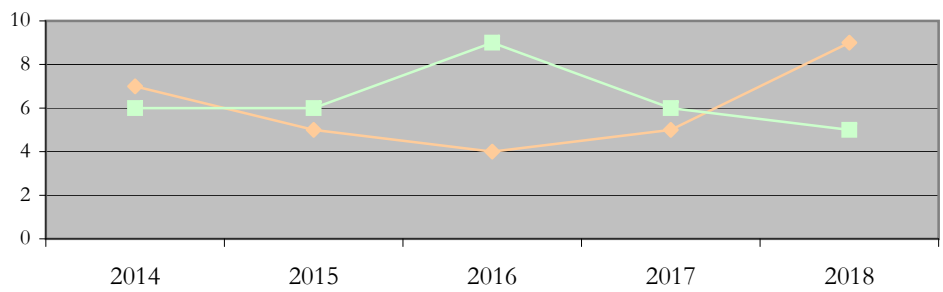
Applications by Gender



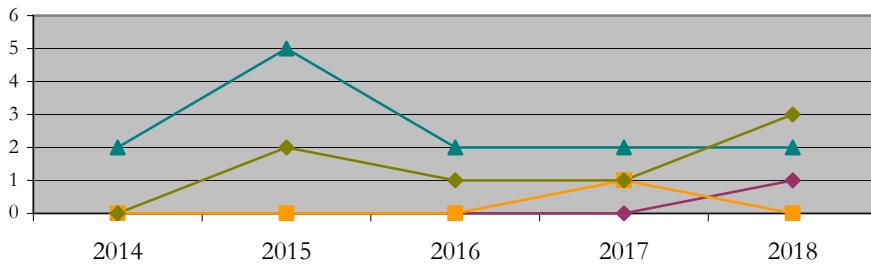
Admissions by Race/Ethnicity



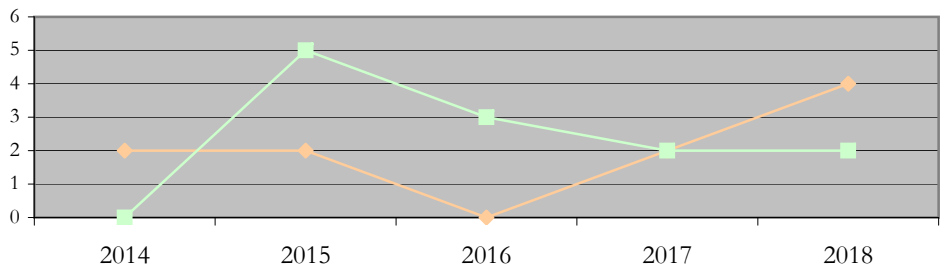
Admissions by Gender



New Enrollments by Race/Ethnicity



New Enrollments by Gender



Notes: 1) URM stands for Under-Represented Minority and includes American Indian or Alaska Native; Black or African-American; Hispanic / Latino race/ethnicity groups
2) Individual URM groups, Native Hawaiian Pacific Islander, Two or More Races, and Other race/ethnicity categories left off these charts due to relatively low numbers

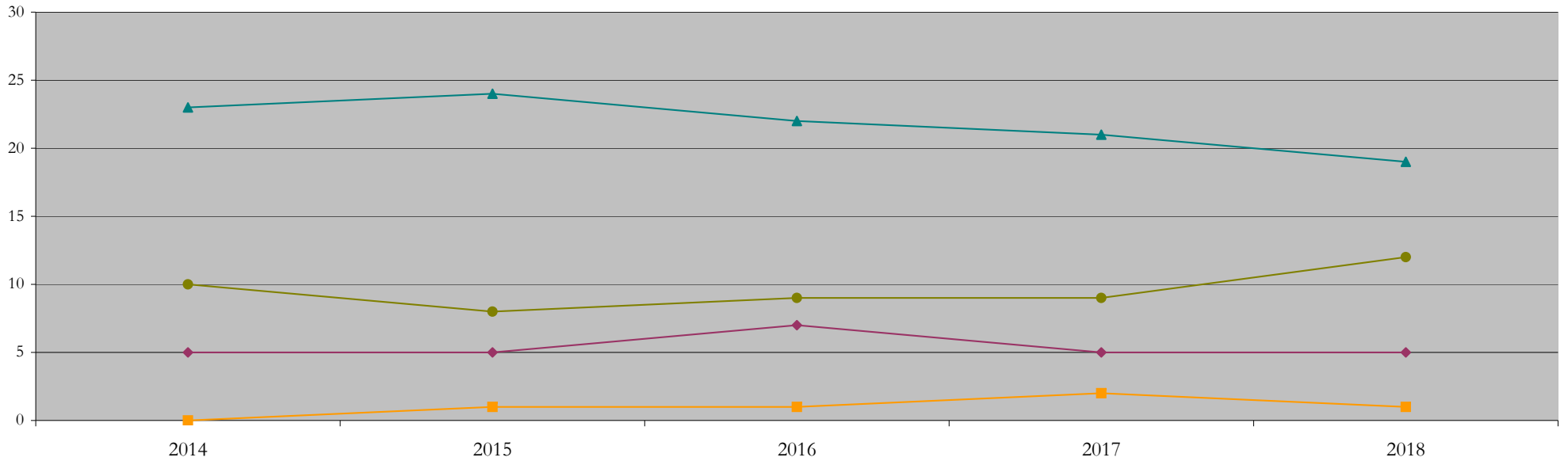
Total Enrollment (includes secondary curriculum)

by Race/Ethnicity

Political_Science_PHD [20FS0343PHD]

Fall 2014 through Fall 2018

Fall Semester Year	Total	Under Represented Minorities (URM)																		
		American Indian or Alaska Native		Black or African American		Hispanic / Latino		URM Total		Asian		Native Hawaiian or Pacific Islander		White		Two or More Races		International		Race/Eth Not Reported
		Count	%	Count	%	Count	%	Count	%	Count	%	Count	%	Count	%	Count	%	Count	%	Count
2014	39	0	0.0	1	2.6	4	10.3	5	12.8	0	0.0	0	0.0	23	59.0	0	0.0	10	25.6	1
2015	39	0	0.0	1	2.6	4	10.3	5	12.8	1	2.6	0	0.0	24	61.5	0	0.0	8	20.5	1
2016	40	0	0.0	2	5.0	5	12.5	7	17.5	1	2.5	0	0.0	22	55.0	0	0.0	9	22.5	1
2017	38	0	0.0	1	2.6	4	10.5	5	13.2	2	5.3	0	0.0	21	55.3	0	0.0	9	23.7	1
2018	37	0	0.0	1	2.7	4	10.8	5	13.5	1	2.7	0	0.0	19	51.4	0	0.0	12	32.4	0



Notes: 1) URM stands for Under-Represented Minority and includes American Indian or Alaska Native; Black or African-American; Hispanic / Latino race/ethnicity groups
 2) Individual URM groups, Native Hawaiian Pacific Islander, Two or More Races, and Other race/ethnicity categories left off this chart due to relatively low numbers

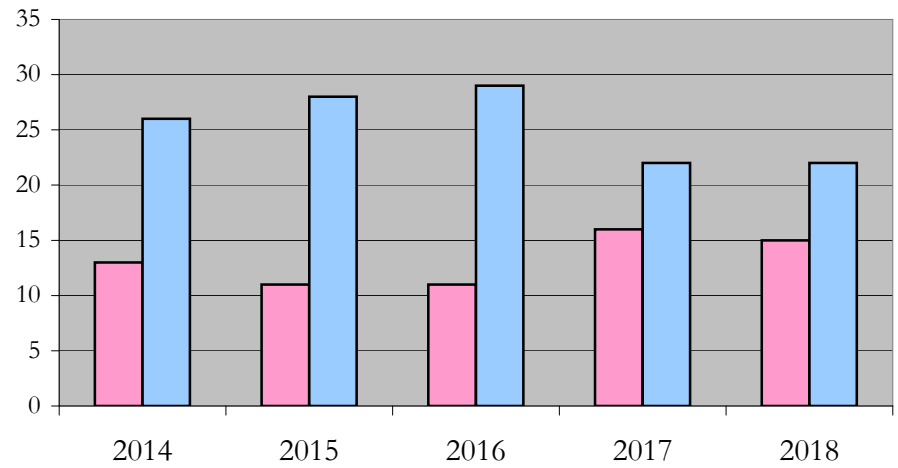
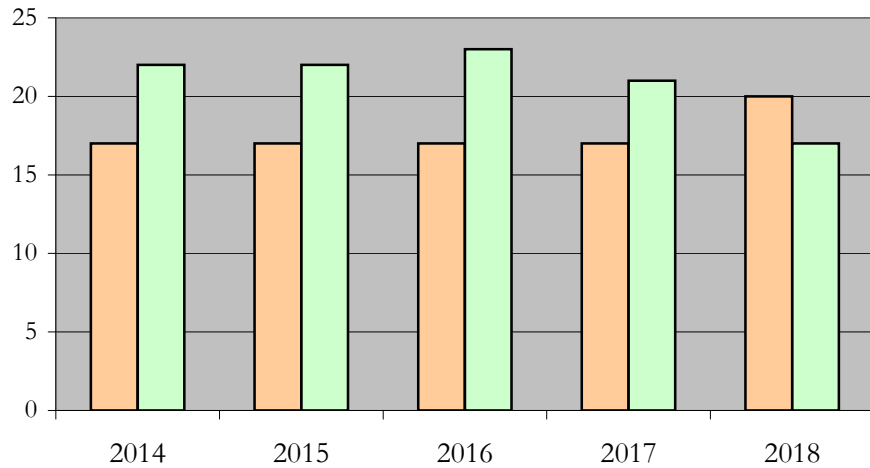
Total Enrollment (includes secondary curriculum)

by Student Type, Gender, and Enrollment Time

Political_Science_PHD [20FS0343PHD]

Fall 2014 through Fall 2018

Fall Semester Year	Total	New		Continuing		Male		Female		Gender Not Reported	Part-time		Full-time	
		Count	%	Count	%	Count	%	Count	%	Count	Count	%	Count	%
2014	39	2	5.1	37	94.9	17	43.6	22	56.4	0	13	33.3	26	66.7
2015	39	7	17.9	32	82.1	17	43.6	22	56.4	0	11	28.2	28	71.8
2016	40	3	7.5	37	92.5	17	42.5	23	57.5	0	11	27.5	29	72.5
2017	38	4	10.5	34	89.5	17	44.7	21	55.3	0	16	42.1	22	57.9
2018	37	6	16.2	31	83.8	20	54.1	17	45.9	0	15	40.5	22	59.5



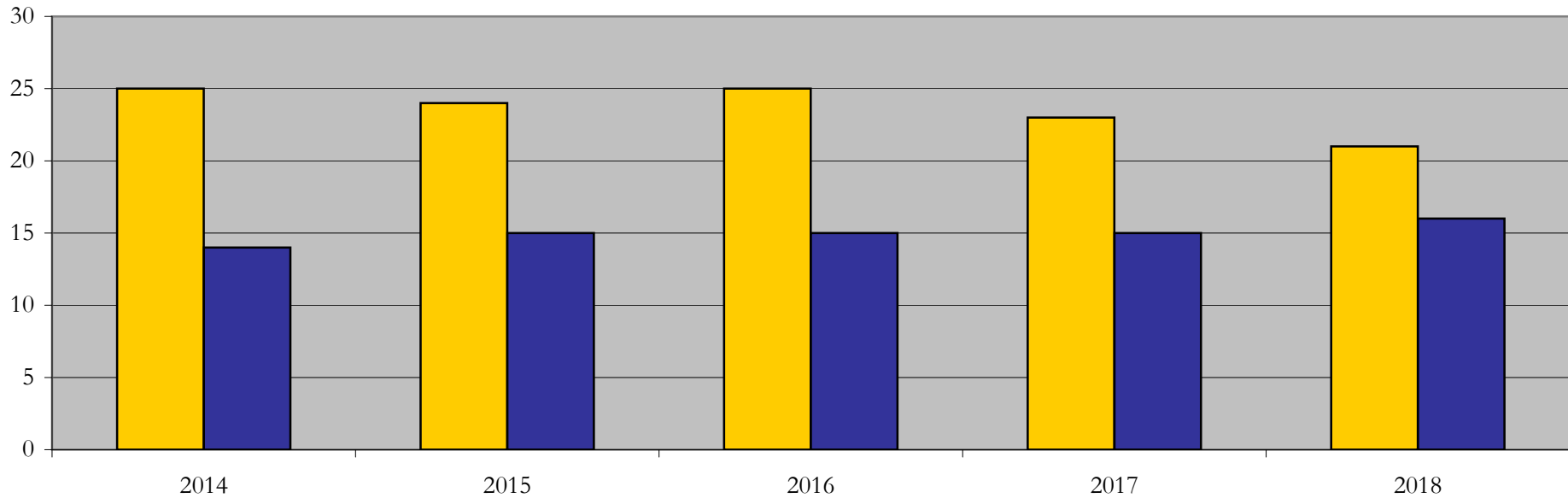
Enrollment & Degrees Conferred

by Primary/Secondary, Average Age, State Residency

Political_Science_PHD [20FS0343PHD]

Fall 2014 through Fall 2018

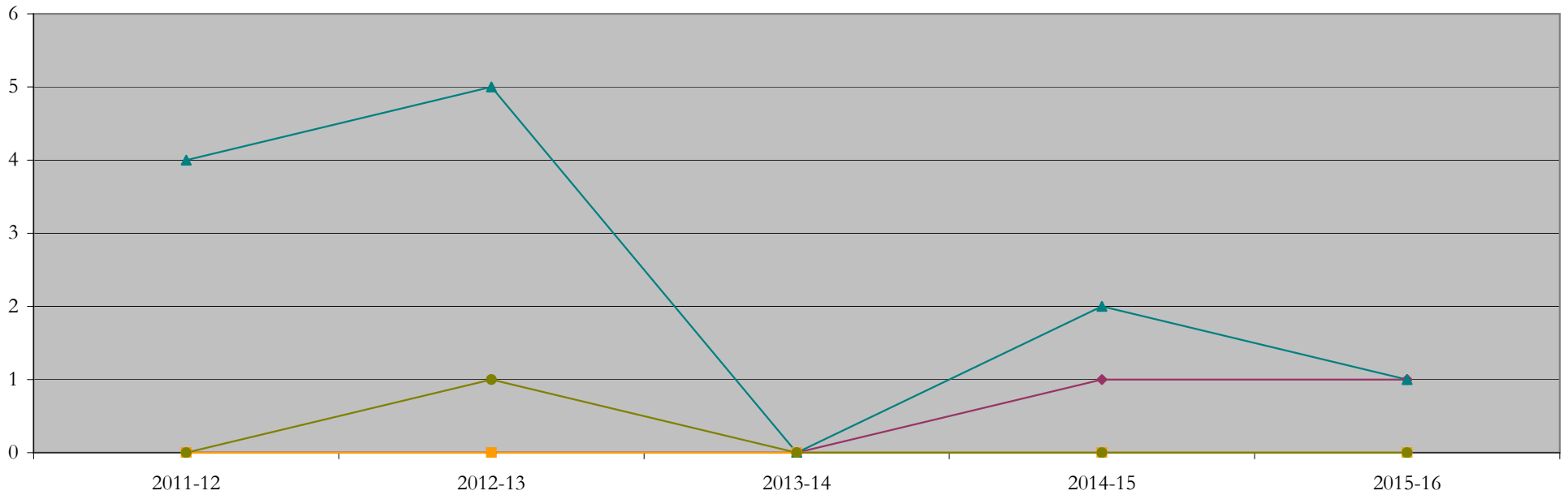
Fall Semester Year	Enrollment			Average Age			State Residency of Total Enrollment					
	Total	Primary	Secondary	Fall New Enrollment	Fall Continuing Enrollment	Academic Year Graduating Class	Residents			Non-Residents		
							Total Enrollment	New Enrollment	Continuing Enrollment	Total Enrollment	New Enrollment	Continuing Enrollment
2014	39	39	0	26	32	36	25	1	24	14	1	13
2015	39	39	0	33	33	33	24	5	19	15	2	13
2016	40	40	0	25	33	0	25	1	24	15	2	13
2017	38	38	0	27	34	37	23	2	21	15	2	13
2018	37	37	0	35	34	39	21	4	17	16	2	14



Degrees Conferred by Race/Ethnicity

Political_Science_PHD [20FS0343PHD]
AY2011-12 through 2015-16

Academic Year	Total	Under Represented Minorities (URM)								Asian		Native Hawaiian or Pacific		White		Two or More Races		International		Not Reported
		American Indian or Alaska Native		Black or African American		Hispanic / Latino		URM Total		Count	%	Count	%	Count	%	Count	%	Count	%	
		Count	%	Count	%	Count	%	Count	%											
2013 - 2014	4	0	0.0	0	0.0	0	0.0	0	0.0	0	0.0	0	0.0	4	100.0	0	0.0	0	0.0	0
2014 - 2015	6	0	0.0	0	0.0	0	0.0	0	0.0	0	0.0	0	0.0	5	83.3	0	0.0	1	16.7	0
2015 - 2016	0	0	0.0	0	0.0	0	0.0	0	0.0	0	0.0	0	0.0	0	0.0	0	0.0	0	0.0	0
2016 - 2017	3	0	0.0	1	33.3	0	0.0	1	33.3	0	0.0	0	0.0	2	66.7	0	0.0	0	0.0	0
2017 - 2018	3	0	0.0	0	0.0	1	33.3	1	33.3	0	0.0	0	0.0	1	33.3	0	0.0	0	0.0	1



Notes: 1) URM stands for Under-Represented Minority and includes American Indian or Alaska Native; Black or African-American; Hispanic / Latino race/ethnicity groups
2) Individual URM groups, Native Hawaiian Pacific Islander, Two or More Races, and Other race/ethnicity categories left off this chart due to relatively low numbers

Degrees Conferred

by Gender

Political_Science_PHD [20FS0343PHD]

AY2011-12 through 2015-16

Academic Year	Total	Male		Female		Not Reported
		Count	%	Count	%	
2013 - 2014	4	3	75.0	1	25.0	0
2014 - 2015	6	4	66.7	2	33.3	0
2015 - 2016	0	0	0.0	0	0.0	0
2016 - 2017	3	1	33.3	2	66.7	0
2017 - 2018	3	0	0.0	3	100.0	0

