

Matriculation

Diversity Pipeline

Physics_PHD [20FS0240PHD]

Fall 2013 through Fall 2017

Fall Semester Year	Applied					Admitted					Non-URM Admitted to Applied Yield %	URM Admitted to Applied Yield %	New Enrollment					Non-URM Enrolled to Admitted Yield %	URM Enrolled to Admitted Yield %	Total Enrollment				
	Grand Total	Non-URM Total		URM Total		Grand Total	Non-URM Total		URM Total				Grand Total	Non-URM Total		URM Total				Grand Total	Non-URM Total		URM Total	
		Count	%	Count	%		Count	%	Count	%				Count	%	Count	%				Count	%	Count	%
2013	151	144	95.4%	7	4.6%	37	37	100.0%	0	0.0%	25.7%	0.0%	10	10	100.0%	0	0.0%	27.0%	0.0%	66	66	100.0%	0	0.0%
2014	150	143	95.3%	7	4.7%	36	36	100.0%	0	0.0%	25.2%	0.0%	14	14	100.0%	0	0.0%	38.9%	0.0%	74	73	98.6%	1	1.4%
2015	174	169	97.1%	5	2.9%	30	29	96.7%	1	3.3%	17.2%	20.0%	12	12	100.0%	0	0.0%	41.4%	0.0%	73	72	98.6%	1	1.4%
2016	165	155	93.9%	10	6.1%	33	32	97.0%	1	3.0%	20.6%	10.0%	9	9	100.0%	0	0.0%	28.1%	0.0%	71	70	98.6%	1	1.4%
2017	129	121	93.8%	8	6.2%	35	34	97.1%	1	2.9%	28.1%	12.5%	8	7	87.5%	1	12.5%	20.6%	100.0%	74	72	97.3%	2	2.7%
Average	154	146	95.2%	7	4.8%	34	34	98.2%	1	1.8%	23.0%	8.1%	11	10	98.1%	0	1.9%	31.0%	33.3%	72	71	98.6%	1	1.4%

Note: URM stands for Under-Represented Minority and includes American Indian or Alaska Native; Black or African-American; Hispanic / Latino race/ethnicity groups

Applications, Admission, & New Enrollment Yields

by Race/Ethnicity & Gender

Physics_PHD [20FS0240PHD]

Fall 2013 through Fall 2017

	Fall Semester Year	Total	Under Represented Minorities (URM)										Race/Eth Not Reported	Male	Female											
			American Indian or Alaska Native		Black or African American		Hispanic / Latino		URM Total		Asian					Native Hawaiian or Pacific Islander		White		Two or More Races		International				
			Count	% Yield	Count	% Yield	Count	% Yield	Count	% Yield	Count	% Yield	Count	% Yield	Count	% Yield	Count	% Yield	Count	% Yield	Count	% Yield	Count	% Yield	Count	% Yield
Applied	2013	151	0		2		5		7		4		0		46		2		89		3		117		33	
	2014	150	1		2		4		7		2		0		42		1		95		3		115		35	
	2015	174	0		0		5		5		4		0		32		3		126		4		136		38	
	2016	165	0		3		7		10		4		0		42		1		99		9		126		39	
	2017	129	0		1		7		8		5		0		28		1		86		1		94		34	
Admitted	2013	37	24.5	0	0.0	0	0.0	0	0.0	0	0.0	0	0.0	12	26.1	2	100.0	22	24.7	1		25	21.4	11	33.3	
	2014	36	24.0	0	0.0	0	0.0	0	0.0	0	0.0	0	0.0	10	23.8	1	100.0	25	26.3	0		28	24.3	8	22.9	
	2015	30	17.2	0	0.0	0	0.0	1	20.0	1	20.0	1	25.0	5	15.6	0	0.0	22	17.5	1		22	16.2	8	21.1	
	2016	33	20.0	0	0.0	0	0.0	1	14.3	1	10.0	0	0.0	15	35.7	1	100.0	13	13.1	3		28	22.2	5	12.8	
	2017	35	27.1	0	0.0	0	0.0	1	14.3	1	12.5	2	40.0	11	39.3	0	0.0	20	23.3	1		26	27.7	9	26.5	
Enrolled	2013	10	27.0	0	0.0	0	0.0	0	0.0	0	0.0	0	0.0	1	8.3	1	50.0	8	36.4	0		7	28.0	3	27.3	
	2014	14	38.9	0	0.0	0	0.0	0	0.0	0	0.0	0	0.0	3	30.0	1	100.0	10	40.0	0		10	35.7	4	50.0	
	2015	12	40.0	0	0.0	0	0.0	0	0.0	0	0.0	0	0.0	3	60.0	0	0.0	9	40.9	0		8	36.4	4	50.0	
	2016	9	27.3	0	0.0	0	0.0	0	0.0	0	0.0	0	0.0	6	40.0	1	100.0	2	15.4	0		6	21.4	3	60.0	
	2017	8	22.9	0	0.0	0	0.0	1	100.0	1	100.0	1	50.0	1	9.1	0	0.0	4	20.0	1		7	26.9	1	11.1	

Notes:

- 1) URM stands for Under-Represented Minority and includes American Indian or Alaska Native; Black or African-American; Hispanic / Latino race/ethnicity groups
- 2) Unreported Gender identification is not shown; Male and Female total may not match Total
- 3) In rare situations, the "% Yield" columns may be greater than 100. There are three potential reasons for this:
 - a) Students that received Graduate College approved transfers may not have an admission record for the program that they enrolled into.
 - b) Students with a secondary curriculum enrollment may not have an admission record for that secondary program.
 - c) Students who were newly enrolled in the summer term prior to the fall were added to the fall new enrollment totals.

Applications, Admission, & New Enrollment Yields, cont. by Race/Ethnicity & Gender

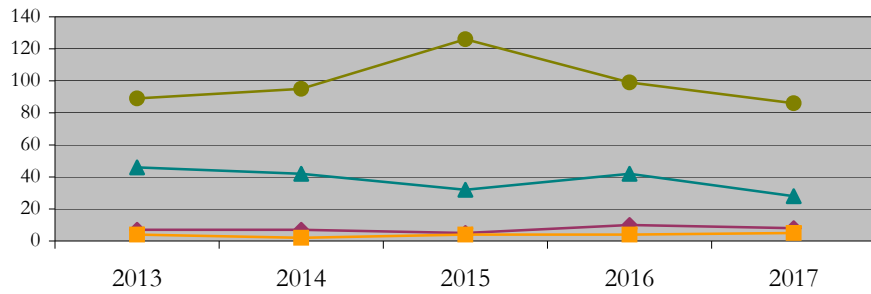
Physics_PHD [20FS0240PHD]

Fall 2013 through Fall 2017

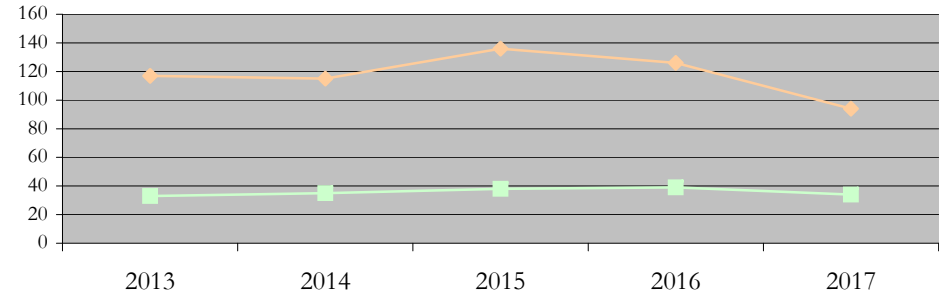
URM Total Asian White International

Male Female

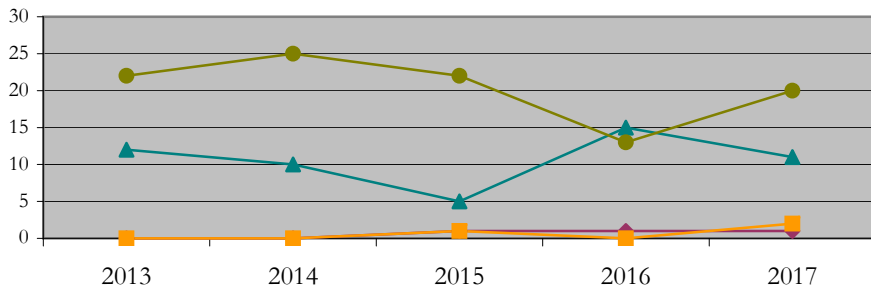
Applications by Race/Ethnicity



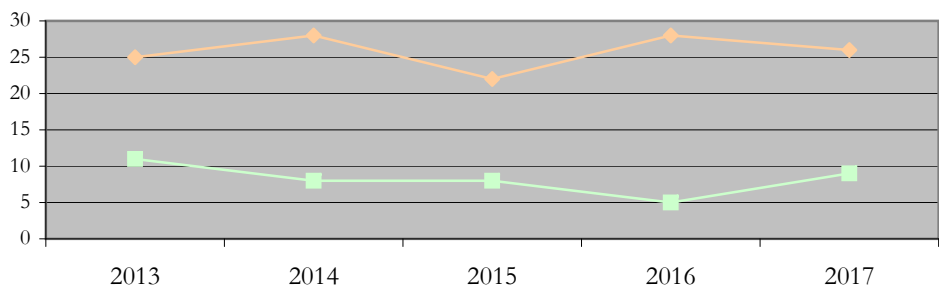
Applications by Gender



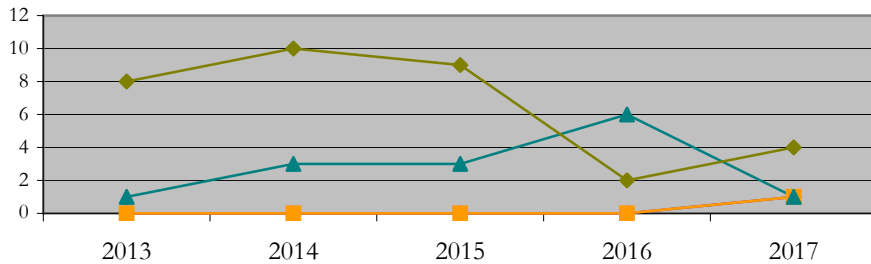
Admissions by Race/Ethnicity



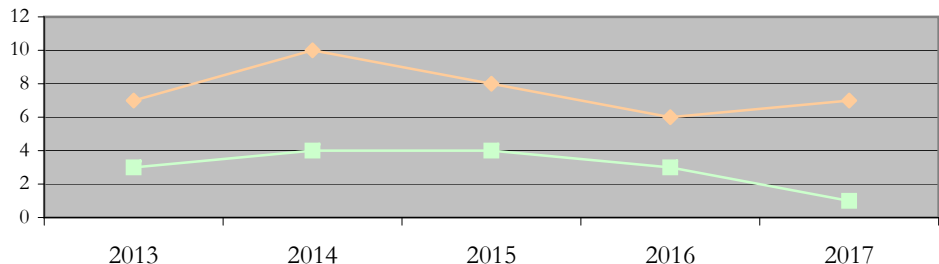
Admissions by Gender



New Enrollments by Race/Ethnicity



New Enrollments by Gender



Notes: 1) URM stands for Under-Represented Minority and includes American Indian or Alaska Native; Black or African-American; Hispanic / Latino race/ethnicity groups
2) Individual URM groups, Native Hawaiian Pacific Islander, Two or More Races, and Other race/ethnicity categories left off these charts due to relatively low numbers

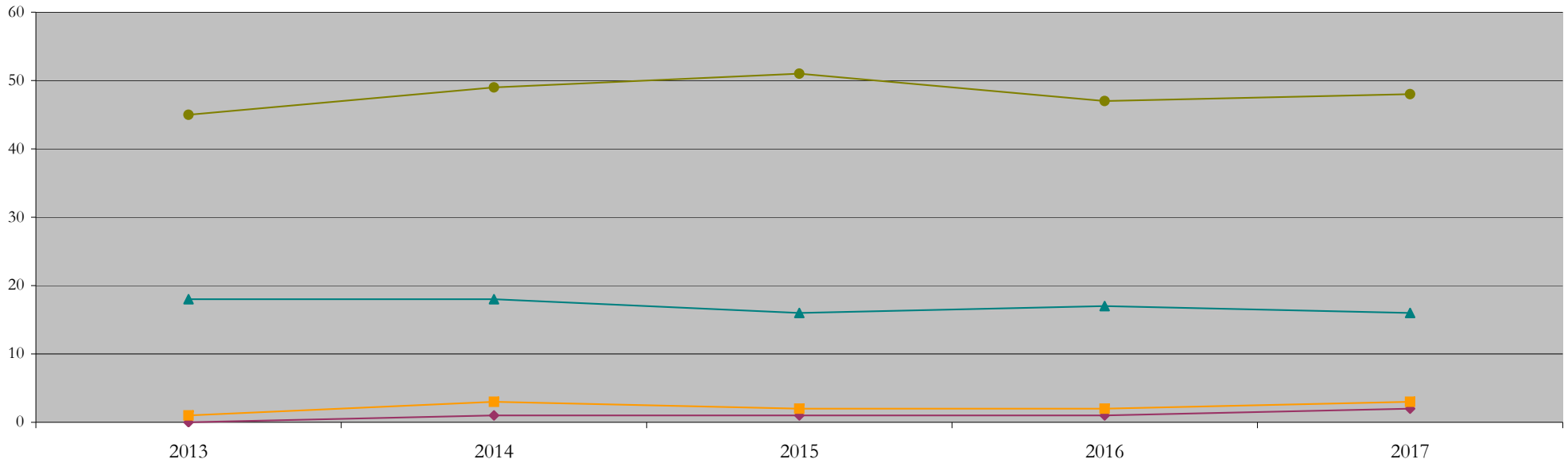
Total Enrollment (includes secondary curriculum)

by Race/Ethnicity

Physics_PHD [20FS0240PHD]

Fall 2013 through Fall 2017

Fall Semester Year	Total	Under Represented Minorities (URM)																		
		American Indian or Alaska Native		Black or African American		Hispanic / Latino		URM Total		Asian		Native Hawaiian or Pacific Islander		White		Two or More Races		International		Race/Eth Not Reported
		Count	%	Count	%	Count	%	Count	%	Count	%	Count	%	Count	%	Count	%	Count	%	Count
2013	66	0	0.0	0	0.0	0	0.0	0	0.0	1	1.5	0	0.0	18	27.3	2	3.0	45	68.2	0
2014	74	0	0.0	0	0.0	1	1.4	1	1.4	3	4.1	0	0.0	18	24.3	3	4.1	49	66.2	0
2015	73	0	0.0	0	0.0	1	1.4	1	1.4	2	2.7	0	0.0	16	21.9	3	4.1	51	69.9	0
2016	71	0	0.0	0	0.0	1	1.4	1	1.4	2	2.8	0	0.0	17	23.9	4	5.6	47	66.2	0
2017	74	0	0.0	0	0.0	2	2.7	2	2.7	3	4.1	0	0.0	16	21.6	4	5.4	48	64.9	1



Notes: 1) URM stands for Under-Represented Minority and includes American Indian or Alaska Native; Black or African-American; Hispanic / Latino race/ethnicity groups
 2) Individual URM groups, Native Hawaiian Pacific Islander, Two or More Races, and Other race/ethnicity categories left off this chart due to relatively low numbers

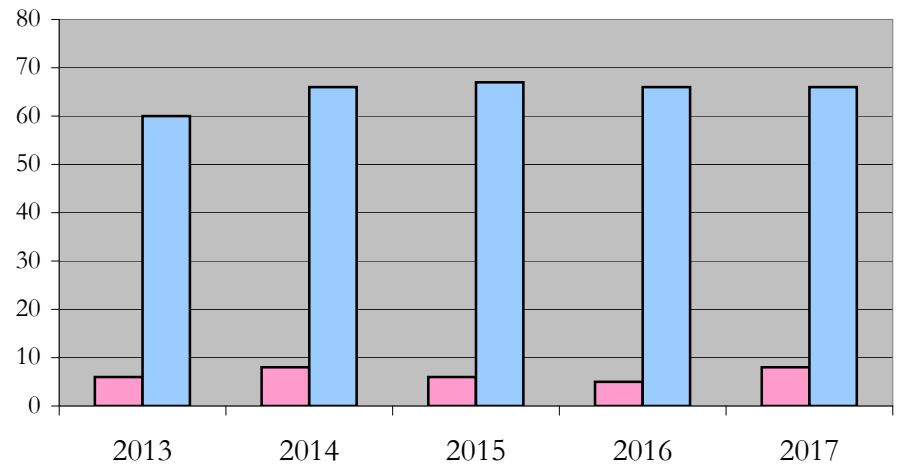
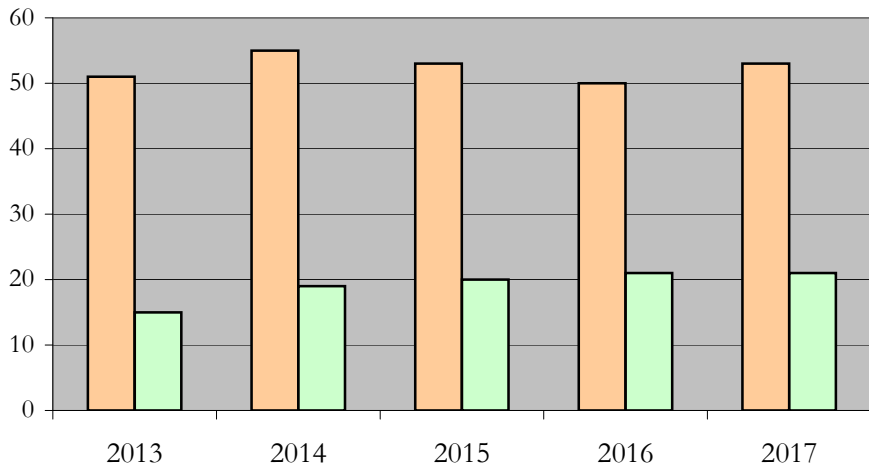
Total Enrollment (includes secondary curriculum)

by Student Type, Gender, and Enrollment Time

Physics_PHD [20FS0240PHD]

Fall 2013 through Fall 2017

Fall Semester Year	Total	New		Continuing		Male		Female		Gender Not Reported	Part-time		Full-time	
		Count	%	Count	%	Count	%	Count	%		Count	%	Count	%
2013	66	10	15.2	56	84.8	51	77.3	15	22.7	0	6	9.1	60	90.9
2014	74	14	18.9	60	81.1	55	74.3	19	25.7	0	8	10.8	66	89.2
2015	73	12	16.4	61	83.6	53	72.6	20	27.4	0	6	8.2	67	91.8
2016	71	9	12.7	62	87.3	50	70.4	21	29.6	0	5	7.0	66	93.0
2017	74	8	10.8	66	89.2	53	71.6	21	28.4	0	8	10.8	66	89.2



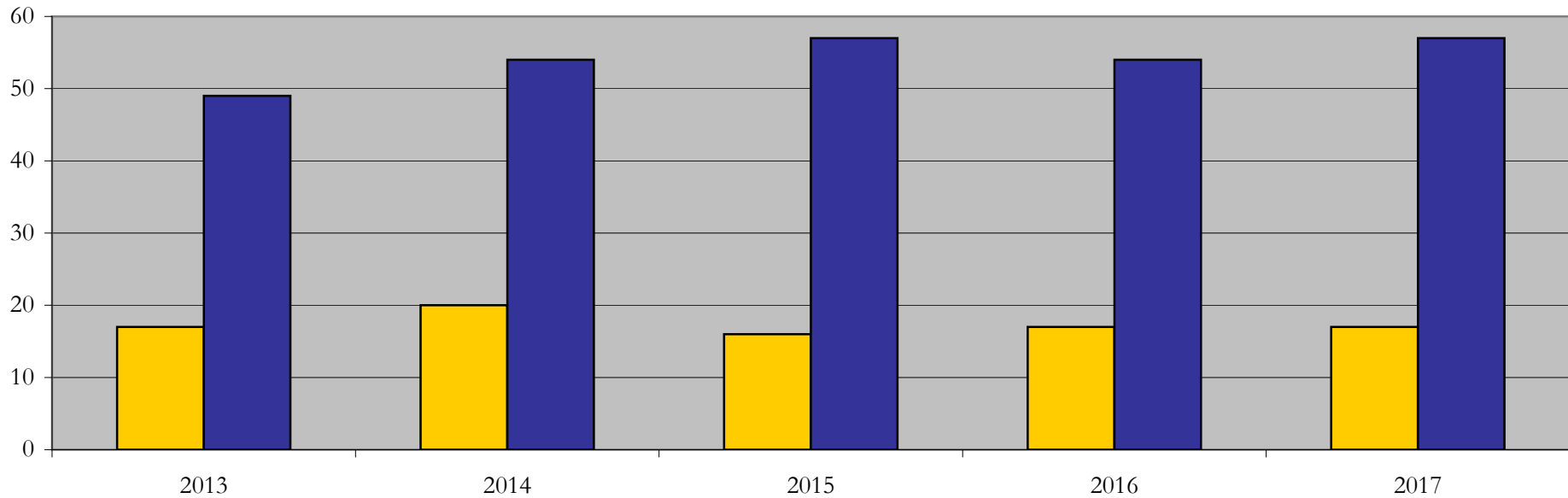
Enrollment & Degrees Conferred

by Primary/Secondary, Average Age, State Residency

Physics_PHD [20FS0240PHD]

Fall 2013 through Fall 2017

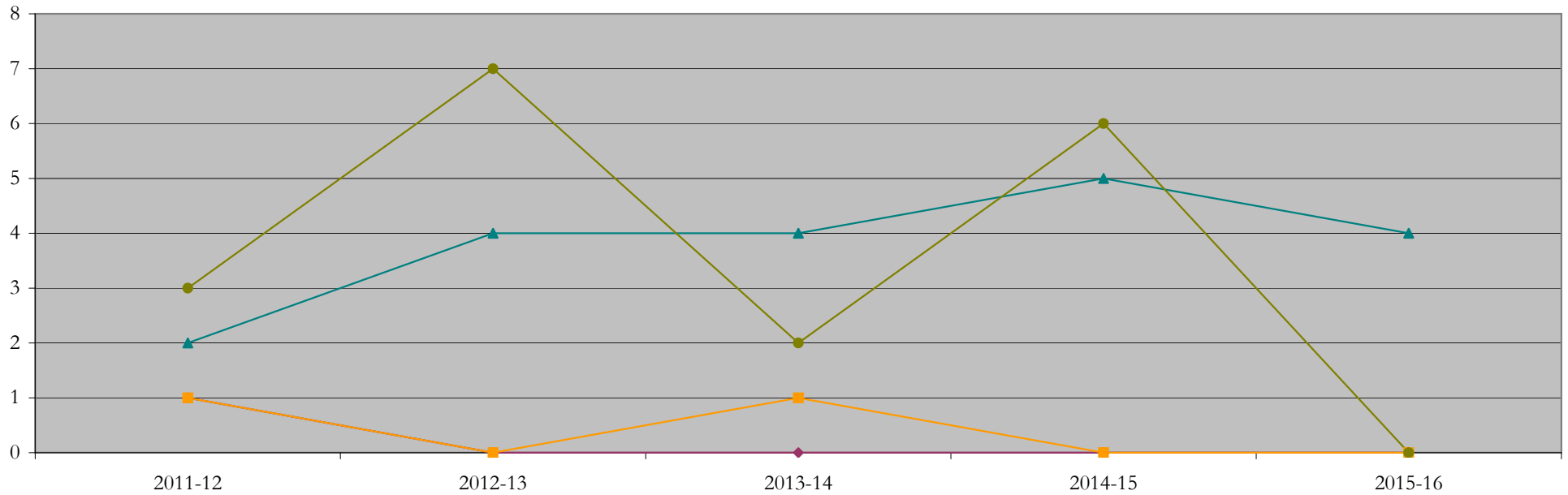
Fall Semester Year	Enrollment			Average Age			State Residency of Total Enrollment					
	Total	Primary	Secondary	Fall New Enrollment	Fall Continuing Enrollment	Academic Year Graduating Class	Residents			Non-Residents		
							Total Enrollment	New Enrollment	Continuing Enrollment	Total Enrollment	New Enrollment	Continuing Enrollment
2013	66	65	1	25	28	35	17	2	15	49	8	41
2014	74	73	1	24	29	30	20	3	17	54	11	43
2015	73	71	2	24	28	30	16	1	15	57	11	46
2016	71	70	1	31	28	33	17	3	14	54	6	48
2017	74	73	1	26	29	32	17	1	16	57	7	50



Degrees Conferred by Race/Ethnicity

Physics_PHD [20FS0240PHD]
AY2011-12 through 2015-16

Academic Year	Total	Under Represented Minorities (URM)								Asian		Native Hawaiian or Pacific		White		Two or More Races		International		Not Reported
		American Indian or Alaska Native		Black or African American		Hispanic / Latino		URM Total		Count	%	Count	%	Count	%	Count	%	Count	%	
		Count	%	Count	%	Count	%	Count	%											
2012 - 2013	8	0	0.0	0	0.0	1	12.5	1	12.5	1	12.5	0	0.0	2	25.0	0	0.0	3	37.5	1
2013 - 2014	11	0	0.0	0	0.0	0	0.0	0	0.0	0	0.0	0	0.0	4	36.4	0	0.0	7	63.6	0
2014 - 2015	7	0	0.0	0	0.0	0	0.0	0	0.0	1	14.3	0	0.0	4	57.1	0	0.0	2	28.6	0
2015 - 2016	11	0	0.0	0	0.0	0	0.0	0	0.0	0	0.0	0	0.0	5	45.5	0	0.0	6	54.5	0
2016 - 2017	4	0	0.0	0	0.0	0	0.0	0	0.0	0	0.0	0	0.0	4	100.0	0	0.0	0	0.0	0



Notes: 1) URM stands for Under-Represented Minority and includes American Indian or Alaska Native; Black or African-American; Hispanic / Latino race/ethnicity groups
2) Individual URM groups, Native Hawaiian Pacific Islander, Two or More Races, and Other race/ethnicity categories left off this chart due to relatively low numbers

Degrees Conferred

by Gender

Physics_PHD [20FS0240PHD]

AY2011-12 through 2015-16

Academic Year	Total	Male		Female		Not Reported
		Count	%	Count	%	
2012 - 2013	8	6	75.0	2	25.0	0
2013 - 2014	11	8	72.7	3	27.3	0
2014 - 2015	7	7	100.0	0	0.0	0
2015 - 2016	11	7	63.6	4	36.4	0
2016 - 2017	4	3	75.0	1	25.0	0

