

# Matriculation

## Diversity Pipeline

Mathematics\_PHD [20FS0439PHD]

Fall 2013 through Fall 2017

Fall Semester Year	Applied					Admitted					Non-URM Admitted to Applied Yield %	URM Admitted to Applied Yield %	New Enrollment					Non-URM Enrolled to Admitted Yield %	URM Enrolled to Admitted Yield %	Total Enrollment				
	Grand Total	Non-URM Total		URM Total		Grand Total	Non-URM Total		URM Total				Grand Total	Non-URM Total		URM Total				Grand Total	Non-URM Total		URM Total	
		Count	%	Count	%		Count	%	Count	%				Count	%	Count	%				Count	%	Count	%
	Count	%	Count	%	Count	%	Count	%	Count	%			Count	%	Count	%	Count			%	Count	%	Count	%
2013	204	192	94.1%	12	5.9%	49	46	93.9%	3	6.1%	24.0%	25.0%	24	23	95.8%	1	4.2%	50.0%	33.3%	106	99	93.4%	7	6.6%
2014	170	165	97.1%	5	2.9%	56	54	96.4%	2	3.6%	32.7%	40.0%	20	19	95.0%	1	5.0%	35.2%	50.0%	110	102	92.7%	8	7.3%
2015	147	144	98.0%	3	2.0%	41	41	100.0%	0	0.0%	28.5%	0.0%	20	20	100.0%	0	0.0%	48.8%	0.0%	122	113	92.6%	9	7.4%
2016	146	136	93.2%	10	6.8%	52	51	98.1%	1	1.9%	37.5%	10.0%	22	22	100.0%	0	0.0%	43.1%	0.0%	124	118	95.2%	6	4.8%
2017	152	141	92.8%	11	7.2%	38	37	97.4%	1	2.6%	26.2%	9.1%	14	13	92.9%	1	7.1%	35.1%	100.0%	113	106	93.8%	7	6.2%
<b>Average</b>	<b>164</b>	<b>156</b>	<b>95.0%</b>	<b>8</b>	<b>5.0%</b>	<b>47</b>	<b>46</b>	<b>97.0%</b>	<b>1</b>	<b>3.0%</b>	<b>29.4%</b>	<b>17.1%</b>	<b>20</b>	<b>19</b>	<b>97.0%</b>	<b>1</b>	<b>3.0%</b>	<b>42.4%</b>	<b>42.9%</b>	<b>115</b>	<b>108</b>	<b>93.6%</b>	<b>7.4</b>	<b>6.4%</b>

**Note:** URM stands for Under-Represented Minority and includes American Indian or Alaska Native; Black or African-American; Hispanic / Latino race/ethnicity groups

# Applications, Admission, & New Enrollment Yields

## by Race/Ethnicity & Gender

Mathematics\_PHD [20FS0439PHD]

Fall 2013 through Fall 2017

	Fall Semester Year	Total	Under Represented Minorities (URM)										Race/Eth Not Reported	Male	Female											
			American Indian or Alaska Native		Black or African American		Hispanic / Latino		URM Total		Asian					Native Hawaiian or Pacific Islander		White		Two or More Races		International				
			Count	% Yield	Count	% Yield	Count	% Yield	Count	% Yield	Count	% Yield	Count	% Yield	Count	% Yield	Count	% Yield	Count	% Yield	Count	% Yield	Count	% Yield	Count	% Yield
Applied	2013	204	0		2		10		12		12		0		80		2		88		10		151		53	
	2014	170	0		0		5		5		6		0		78		5		73		3		113		55	
	2015	147	0		2		1		3		7		0		62		3		66		6		112		35	
	2016	146	0		0		10		10		11		0		63		3		56		3		107		39	
	2017	152	0		1		10		11		9		0		64		1		58		9		108		42	
			Count	% Yield	Count	% Yield	Count	% Yield	Count	% Yield	Count	% Yield	Count	% Yield	Count	% Yield	Count	% Yield	Count	% Yield	Count	% Yield	Count	% Yield	Count	% Yield
Admitted	2013	49	24.0	0	0.0	0	0.0	3	30.0	3	25.0	4	33.3	0	0.0	19	23.8	0	0.0	23	26.1	0	41	27.2	8	15.1
	2014	56	32.9	0	0.0	0	0.0	2	40.0	2	40.0	2	33.3	0	0.0	18	23.1	2	40.0	31	42.5	1	35	31.0	21	38.2
	2015	41	27.9	0	0.0	0	0.0	0	0.0	0	0.0	0	0.0	0	0.0	20	32.3	2	66.7	19	28.8	0	29	25.9	12	34.3
	2016	52	35.6	0	0.0	0	0.0	1	10.0	1	10.0	3	27.3	0	0.0	24	38.1	0	0.0	22	39.3	2	40	37.4	12	30.8
	2017	38	25.0	0	0.0	0	0.0	1	10.0	1	9.1	2	22.2	0	0.0	18	28.1	0	0.0	14	24.1	3	28	25.9	9	21.4
			Count	% Yield	Count	% Yield	Count	% Yield	Count	% Yield	Count	% Yield	Count	% Yield	Count	% Yield	Count	% Yield	Count	% Yield	Count	% Yield	Count	% Yield	Count	% Yield
Enrolled	2013	24	49.0	0	0.0	0	0.0	1	33.3	1	33.3	0	0.0	0	0.0	11	57.9	0	0.0	12	52.2	0	20	48.8	4	50.0
	2014	20	35.7	0	0.0	0	0.0	1	50.0	1	50.0	1	50.0	0	0.0	5	27.8	1	50.0	12	38.7	0	13	37.1	7	33.3
	2015	20	48.8	0	0.0	0	0.0	0	0.0	0	0.0	0	0.0	0	0.0	8	40.0	1	50.0	11	57.9	0	15	51.7	5	41.7
	2016	22	42.3	0	0.0	0	0.0	0	0.0	0	0.0	0	0.0	0	0.0	12	50.0	0	0.0	10	45.5	0	20	50.0	2	16.7
	2017	14	36.8	0	0.0	0	0.0	1	100.0	1	100.0	0	0.0	0	0.0	7	38.9	0	0.0	6	42.9	0	10	35.7	4	44.4

**Notes:**

- 1) URM stands for Under-Represented Minority and includes American Indian or Alaska Native; Black or African-American; Hispanic / Latino race/ethnicity groups
- 2) Unreported Gender identification is not shown; Male and Female total may not match Total
- 3) In rare situations, the "% Yield" columns may be greater than 100. There are three potential reasons for this:
  - a) Students that received Graduate College approved transfers may not have an admission record for the program that they enrolled into.
  - b) Students with a secondary curriculum enrollment may not have an admission record for that secondary program.
  - c) Students who were newly enrolled in the summer term prior to the fall were added to the fall new enrollment totals.

# Applications, Admission, & New Enrollment Yields, cont.

## by Race/Ethnicity & Gender

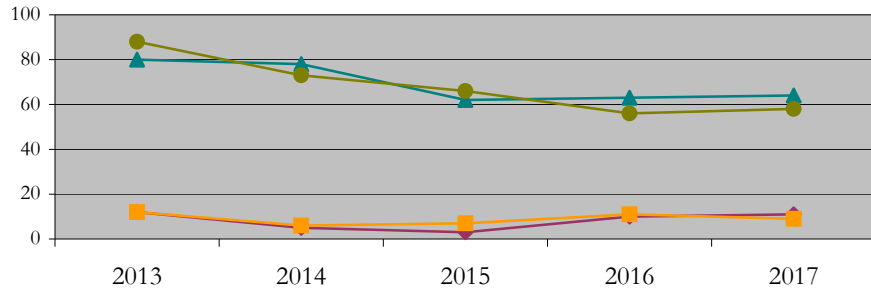
Mathematics\_PHD [20FS0439PHD]

Fall 2013 through Fall 2017

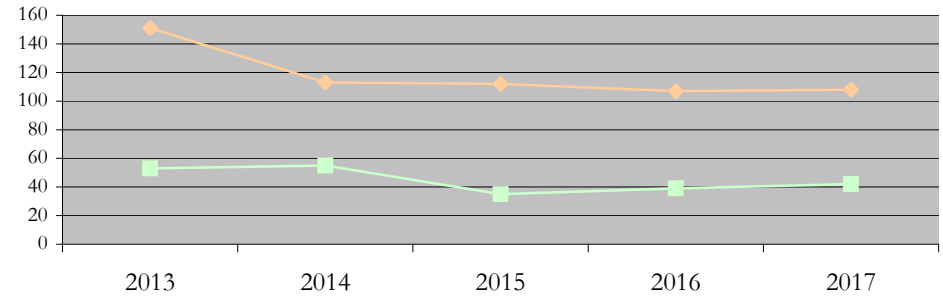
URM Total Asian White International

Male Female

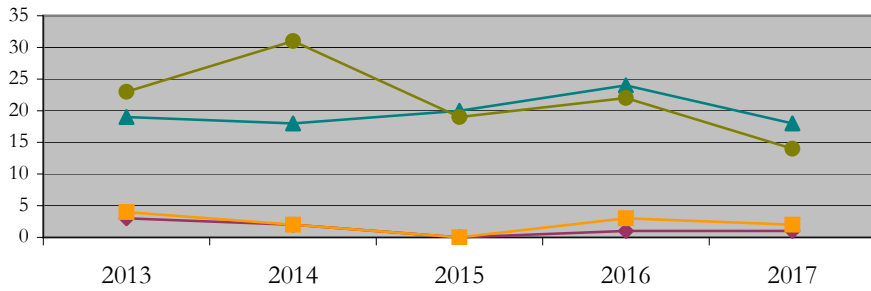
Applications by Race/Ethnicity



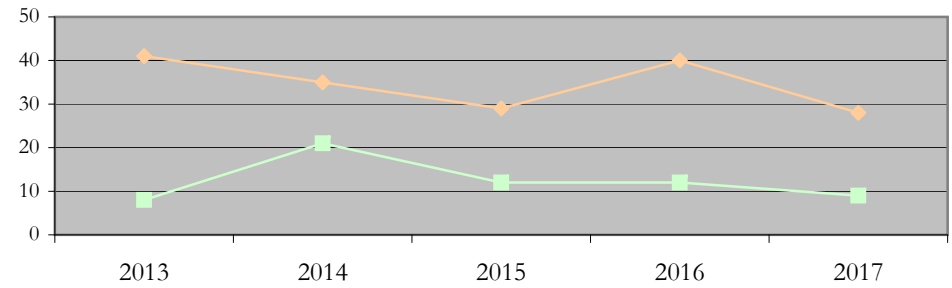
Applications by Gender



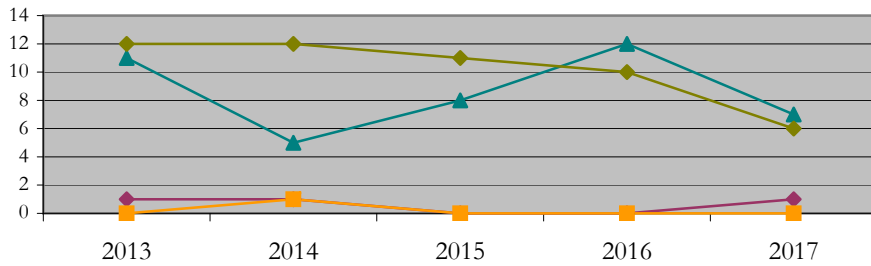
Admissions by Race/Ethnicity



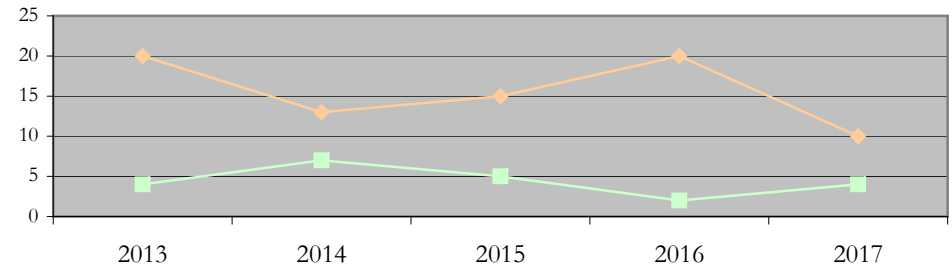
Admissions by Gender



New Enrollments by Race/Ethnicity



New Enrollments by Gender



**Notes:** 1) URM stands for Under-Represented Minority and includes American Indian or Alaska Native; Black or African-American; Hispanic / Latino race/ethnicity groups  
 2) Individual URM groups, Native Hawaiian Pacific Islander, Two or More Races, and Other race/ethnicity categories left off these charts due to relatively low numbers

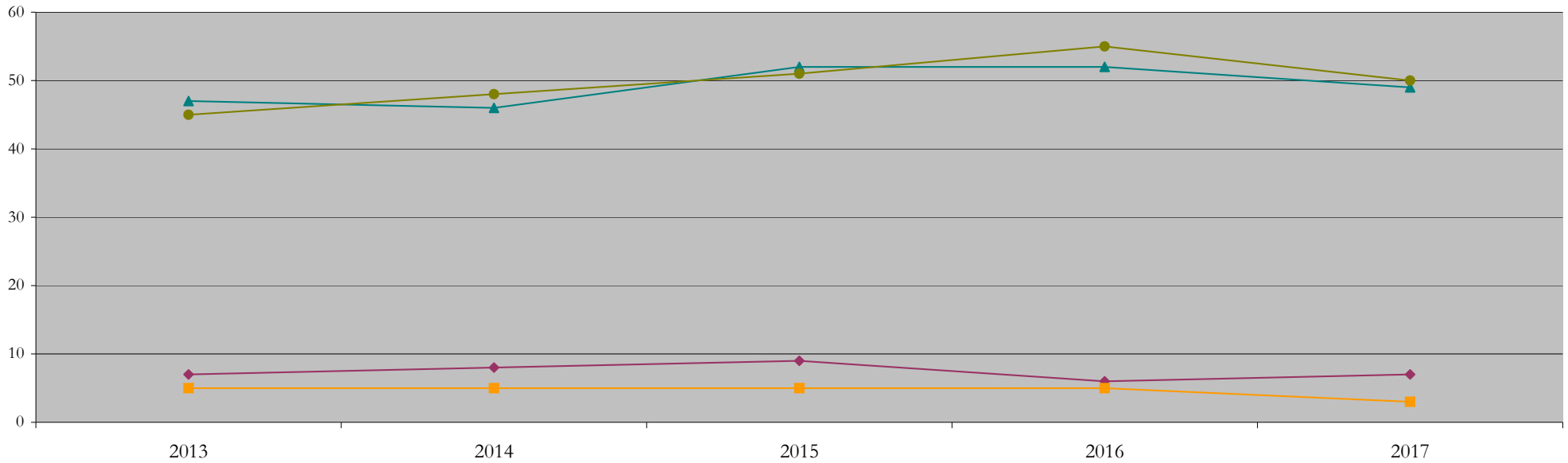
**Total Enrollment (includes secondary curriculum)**

**by Race/Ethnicity**

Mathematics\_PHD [20FS0439PHD]

Fall 2013 through Fall 2017

Fall Semester Year	Total	Under Represented Minorities (URM)																		
		American Indian or Alaska Native		Black or African American		Hispanic / Latino		URM Total		Asian		Native Hawaiian or Pacific Islander		White		Two or More Races		International		Race/Eth Not Reported
		Count	%	Count	%	Count	%	Count	%	Count	%	Count	%	Count	%	Count	%	Count	%	Count
2013	106	0	0.0	0	0.0	7	6.6	7	6.6	5	4.7	0	0.0	47	44.3	1	0.9	45	42.5	1
2014	110	0	0.0	0	0.0	8	7.3	8	7.3	5	4.5	0	0.0	46	41.8	2	1.8	48	43.6	1
2015	122	0	0.0	1	0.8	8	6.6	9	7.4	5	4.1	0	0.0	52	42.6	3	2.5	51	41.8	2
2016	124	0	0.0	1	0.8	5	4.0	6	4.8	5	4.0	0	0.0	52	41.9	3	2.4	55	44.4	3
2017	113	0	0.0	1	0.9	6	5.3	7	6.2	3	2.7	0	0.0	49	43.4	1	0.9	50	44.2	3



**Notes:** 1) URM stands for Under-Represented Minority and includes American Indian or Alaska Native; Black or African-American; Hispanic / Latino race/ethnicity groups  
 2) Individual URM groups, Native Hawaiian Pacific Islander, Two or More Races, and Other race/ethnicity categories left off this chart due to relatively low numbers

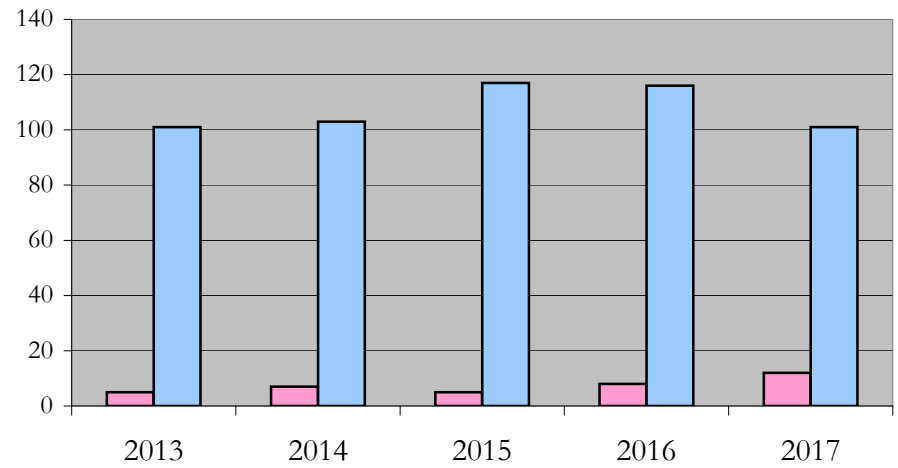
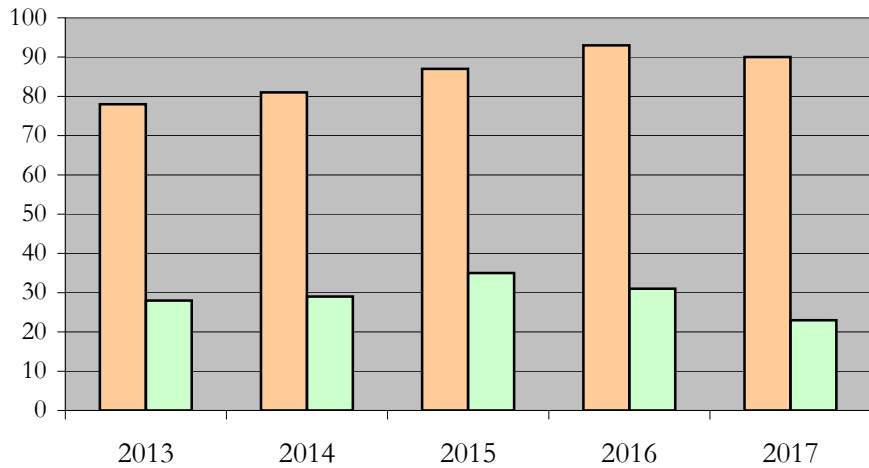
**Total Enrollment (includes secondary curriculum)**

**by Student Type, Gender, and Enrollment Time**

Mathematics\_PHD [20FS0439PHD]

Fall 2013 through Fall 2017

Fall Semester Year	Total	New		Continuing		Male		Female		Gender Not Reported	Part-time		Full-time	
		Count	%	Count	%	Count	%	Count	%	Count	Count	%	Count	%
2013	106	24	22.6	82	77.4	78	73.6	28	26.4	0	5	4.7	101	95.3
2014	110	20	18.2	90	81.8	81	73.6	29	26.4	0	7	6.4	103	93.6
2015	122	20	16.4	102	83.6	87	71.3	35	28.7	0	5	4.1	117	95.9
2016	124	22	17.7	102	82.3	93	75.0	31	25.0	0	8	6.5	116	93.5
2017	113	14	12.4	99	87.6	90	79.6	23	20.4	0	12	10.6	101	89.4



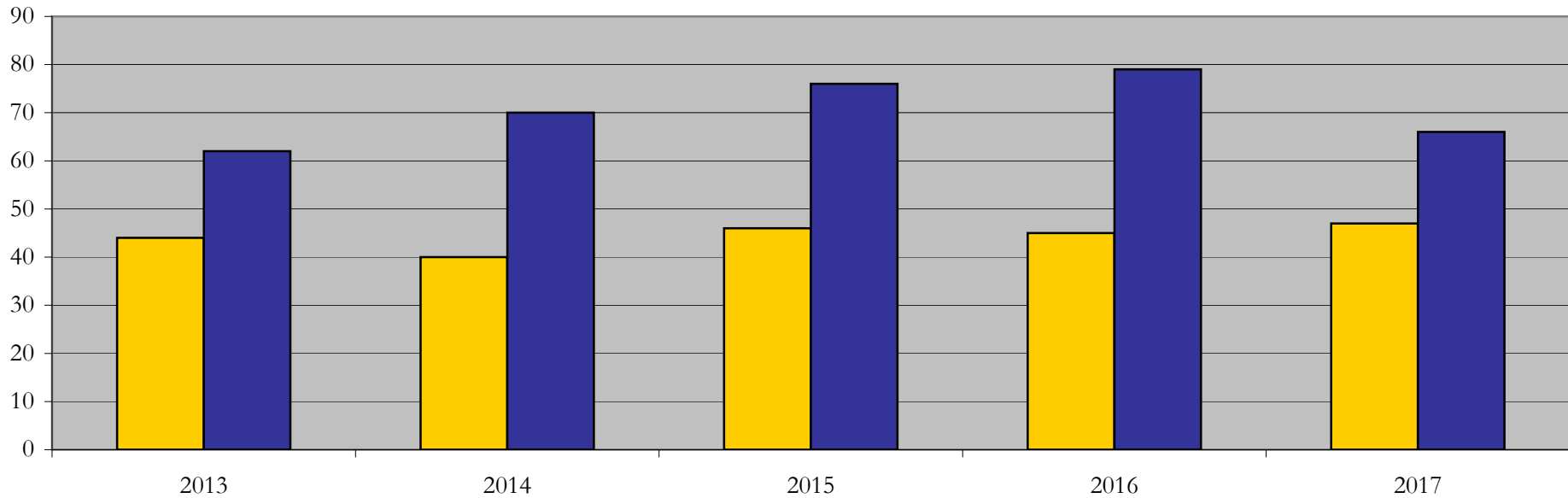
## Enrollment & Degrees Conferred

by Primary/Secondary, Average Age, State Residency

Mathematics\_PHD [20FS0439PHD]

Fall 2013 through Fall 2017

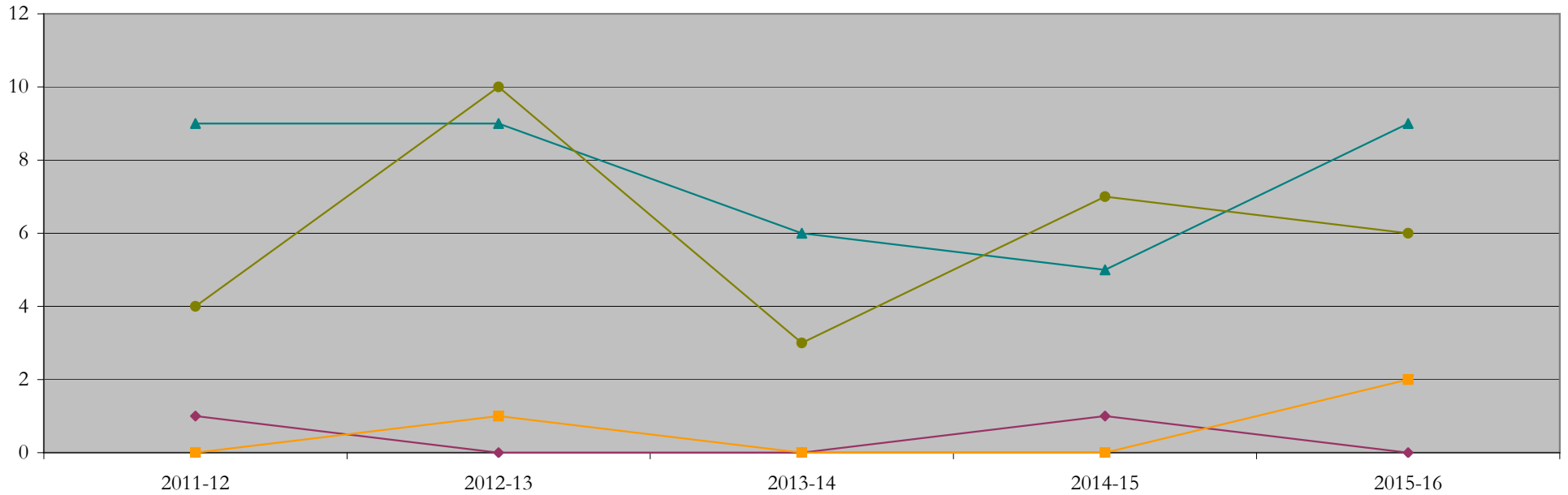
Fall Semester Year	Enrollment			Average Age			State Residency of Total Enrollment					
	Total	Primary	Secondary	Fall New Enrollment	Fall Continuing Enrollment	Academic Year Graduating Class	Residents			Non-Residents		
							Total Enrollment	New Enrollment	Continuing Enrollment	Total Enrollment	New Enrollment	Continuing Enrollment
2013	106	106	0	25	28	31	44	7	37	62	17	45
2014	110	110	0	24	28	30	40	3	37	70	17	53
2015	122	122	0	25	28	29	46	6	40	76	14	62
2016	124	124	0	24	28	29	45	8	37	79	14	65
2017	113	113	0	25	28	30	47	8	39	66	6	60



## Degrees Conferred by Race/Ethnicity

Mathematics\_PHD [20FS0439PHD]  
AY2011-12 through 2015-16

Academic Year	Total	Under Represented Minorities (URM)								Asian		Native Hawaiian or Pacific		White		Two or More Races		International		Not Reported
		American Indian or Alaska Native		Black or African American		Hispanic / Latino		URM Total		Count	%	Count	%	Count	%	Count	%	Count	%	
		Count	%	Count	%	Count	%	Count	%											
2012 - 2013	14	0	0.0	0	0.0	1	7.1	1	7.1	0	0.0	0	0.0	9	64.3	0	0.0	4	28.6	0
2013 - 2014	21	0	0.0	0	0.0	0	0.0	0	0.0	1	4.8	0	0.0	9	42.9	1	4.8	10	47.6	0
2014 - 2015	9	0	0.0	0	0.0	0	0.0	0	0.0	0	0.0	0	0.0	6	66.7	0	0.0	3	33.3	0
2015 - 2016	13	0	0.0	0	0.0	1	7.7	1	7.7	0	0.0	0	0.0	5	38.5	0	0.0	7	53.8	0
2016 - 2017	17	0	0.0	0	0.0	0	0.0	0	0.0	2	11.8	0	0.0	9	52.9	0	0.0	6	35.3	0



**Notes:** 1) URM stands for Under-Represented Minority and includes American Indian or Alaska Native; Black or African-American; Hispanic / Latino race/ethnicity groups  
2) Individual URM groups, Native Hawaiian Pacific Islander, Two or More Races, and Other race/ethnicity categories left off this chart due to relatively low numbers

## Degrees Conferred

### by Gender

Mathematics\_PHD [20FS0439PHD]

AY2011-12 through 2015-16

Academic Year	Total	Male		Female		Not Reported
		Count	%	Count	%	
2012 - 2013	14	10	71.4	4	28.6	0
2013 - 2014	21	15	71.4	6	28.6	0
2014 - 2015	9	8	88.9	1	11.1	0
2015 - 2016	13	10	76.9	3	23.1	0
2016 - 2017	17	10	58.8	7	41.2	0

