

# Matriculation

## Diversity Pipeline

Economics\_PHD [20FS0074PHD]

Fall 2014 through Fall 2018

Fall Semester Year	Applied					Admitted					Non-URM Admitted to Applied Yield %	URM Admitted to Applied Yield %	New Enrollment					Non-URM Enrolled to Admitted Yield %	URM Enrolled to Admitted Yield %	Total Enrollment				
	Grand Total	Non-URM Total		URM Total		Grand Total	Non-URM Total		URM Total				Grand Total	Non-URM Total		URM Total				Grand Total	Non-URM Total		URM Total	
		Count	%	Count	%		Count	%	Count	%				Count	%	Count	%				Count	%	Count	%
2014	145	140	96.6%	5	3.4%	41	41	100.0%	0	0.0%	29.3%	0.0%	14	14	100.0%	0	0.0%	34.1%	0.0%	72	70	97.2%	2	2.8%
2015	130	125	96.2%	5	3.8%	42	41	97.6%	1	2.4%	32.8%	20.0%	15	15	100.0%	0	0.0%	36.6%	0.0%	70	69	98.6%	1	1.4%
2016	158	152	96.2%	6	3.8%	42	40	95.2%	2	4.8%	26.3%	33.3%	8	8	100.0%	0	0.0%	20.0%	0.0%	65	64	98.5%	1	1.5%
2017	107	104	97.2%	3	2.8%	17	17	100.0%	0	0.0%	16.3%	0.0%	7	7	100.0%	0	0.0%	41.2%	0.0%	60	60	100.0%	0	0.0%
2018	109	107	98.2%	2	1.8%	30	30	100.0%	0	0.0%	28.0%	0.0%	6	6	100.0%	0	0.0%	20.0%	0.0%	57	57	100.0%	0	0.0%
<b>Average</b>	<b>130</b>	<b>126</b>	<b>96.8%</b>	<b>4</b>	<b>3.2%</b>	<b>34</b>	<b>34</b>	<b>98.3%</b>	<b>1</b>	<b>1.7%</b>	<b>26.9%</b>	<b>14.3%</b>	<b>10</b>	<b>10</b>	<b>100.0%</b>	<b>0</b>	<b>0.0%</b>	<b>29.6%</b>	<b>0.0%</b>	<b>65</b>	<b>64</b>	<b>98.8%</b>	<b>0.8</b>	<b>1.2%</b>

**Note:** URM stands for Under-Represented Minority and includes American Indian or Alaska Native; Black or African-American; Hispanic / Latino race/ethnicity groups

# Applications, Admission, & New Enrollment Yields

## by Race/Ethnicity & Gender

Economics\_PHD [20FS0074PHD]

Fall 2014 through Fall 2018

	Fall Semester Year	Total	Under Represented Minorities (URM)										Race/Eth Not Reported	Male	Female												
			American Indian or Alaska Native		Black or African American		Hispanic / Latino		URM Total		Asian					Native Hawaiian or Pacific Islander		White		Two or More Races		International					
		Count	% Yield	Count	% Yield	Count	% Yield	Count	% Yield	Count	% Yield	Count	% Yield	Count	% Yield	Count	% Yield	Count	% Yield	Count	% Yield	Count	% Yield	Count	% Yield		
Applied	2014	145		0		3		2		5		5		0		31		1		102		1		89		56	
	2015	130		0		2		3		5		8		0		20		0		96		1		81		49	
	2016	158		0		2		4		6		7		0		20		2		120		3		86		72	
	2017	107		0		0		3		3		3		0		19		1		79		2		60		47	
	2018	109		0		1		1		2		4		0		8		0		84		11		62		47	
Admitted	2014	41	28.3	0	0.0	0	0.0	0	0.0	0	0.0	3	60.0	0	0.0	15	48.4	1	100.0	22	21.6	0		20	22.5	21	37.5
	2015	42	32.3	0	0.0	0	0.0	1	33.3	1	20.0	1	12.5	0	0.0	12	60.0	0	0.0	27	28.1	1		26	32.1	16	32.7
	2016	42	26.6	0	0.0	0	0.0	2	50.0	2	33.3	2	28.6	0	0.0	12	60.0	2	100.0	23	19.2	1		18	20.9	24	33.3
	2017	17	15.9	0	0.0	0	0.0	0	0.0	0	0.0	0	0.0	0	0.0	8	42.1	0	0.0	9	11.4	0		7	11.7	10	21.3
	2018	30	27.5	0	0.0	0	0.0	0	0.0	0	0.0	2	50.0	0	0.0	3	37.5	0	0.0	17	20.2	8		13	21.0	17	36.2
Enrolled	2014	14	34.1	0	0.0	0	0.0	0	0.0	0	0.0	2	66.7	0	0.0	4	26.7	0	0.0	8	36.4	0		9	45.0	5	23.8
	2015	15	35.7	0	0.0	0	0.0	0	0.0	0	0.0	0	0.0	0	0.0	5	41.7	0	0.0	10	37.0	0		10	38.5	5	31.3
	2016	8	19.0	0	0.0	0	0.0	0	0.0	0	0.0	0	0.0	0	0.0	4	33.3	0	0.0	4	17.4	0		3	16.7	5	20.8
	2017	7	41.2	0	0.0	0	0.0	0	0.0	0	0.0	0	0.0	0	0.0	4	50.0	0	0.0	3	33.3	0		3	42.9	4	40.0
	2018	6	20.0	0	0.0	0	0.0	0	0.0	0	0.0	2	100.0	0	0.0	1	33.3	0	0.0	3	17.6	0		1	7.7	5	29.4

**Notes:**

- 1) URM stands for Under-Represented Minority and includes American Indian or Alaska Native; Black or African-American; Hispanic / Latino race/ethnicity groups
- 2) Unreported Gender identification is not shown; Male and Female total may not match Total
- 3) In rare situations, the "% Yield" columns may be greater than 100. There are three potential reasons for this:
  - a) Students that received Graduate College approved transfers may not have an admission record for the program that they enrolled into.
  - b) Students with a secondary curriculum enrollment may not have an admission record for that secondary program.
  - c) Students who were newly enrolled in the summer term prior to the fall were added to the fall new enrollment totals.

# Applications, Admission, & New Enrollment Yields, cont. by Race/Ethnicity & Gender

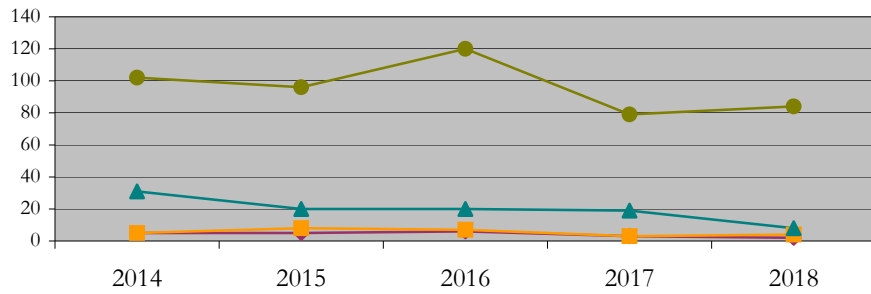
Economics\_PHD [20FS0074PHD]

Fall 2014 through Fall 2018

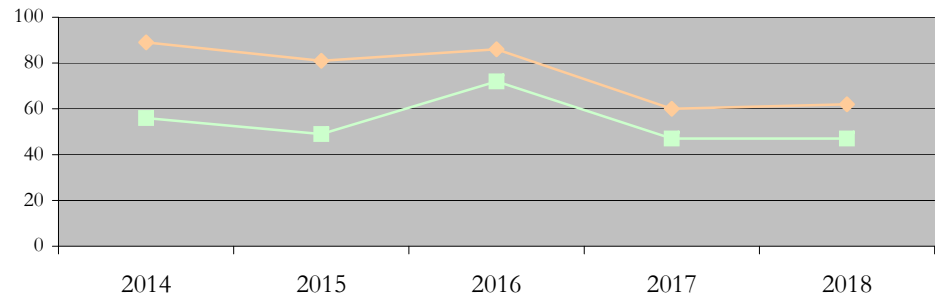
◆ URM Total    ■ Asian    ▲ White    ● International

◆ Male    ■ Female

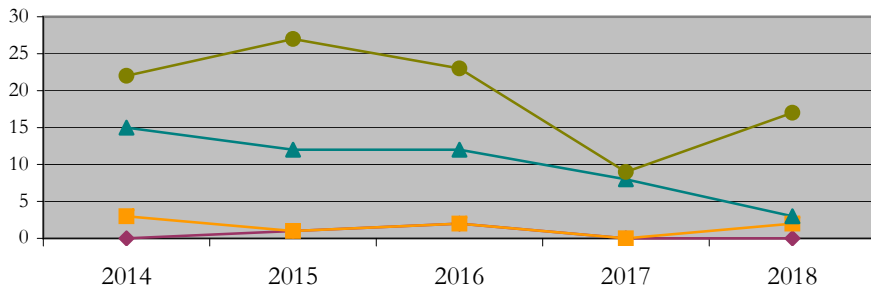
### Applications by Race/Ethnicity



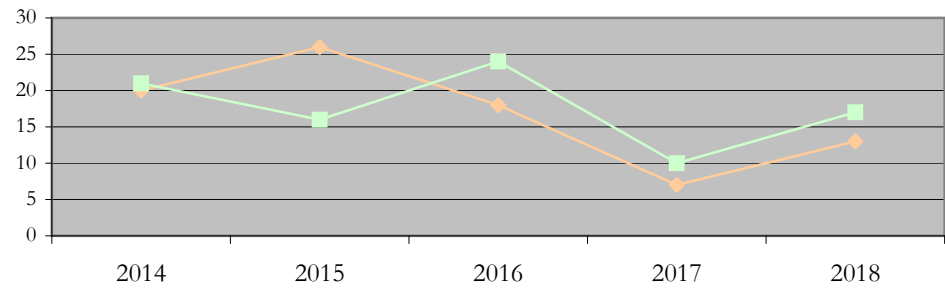
### Applications by Gender



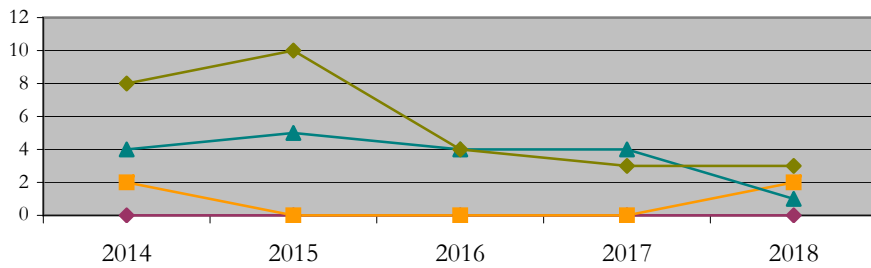
### Admissions by Race/Ethnicity



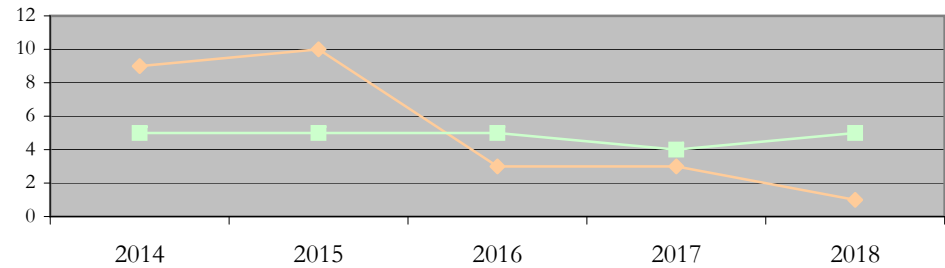
### Admissions by Gender



### New Enrollments by Race/Ethnicity



### New Enrollments by Gender



**Notes:** 1) URM stands for Under-Represented Minority and includes American Indian or Alaska Native; Black or African-American; Hispanic / Latino race/ethnicity groups  
2) Individual URM groups, Native Hawaiian Pacific Islander, Two or More Races, and Other race/ethnicity categories left off these charts due to relatively low numbers

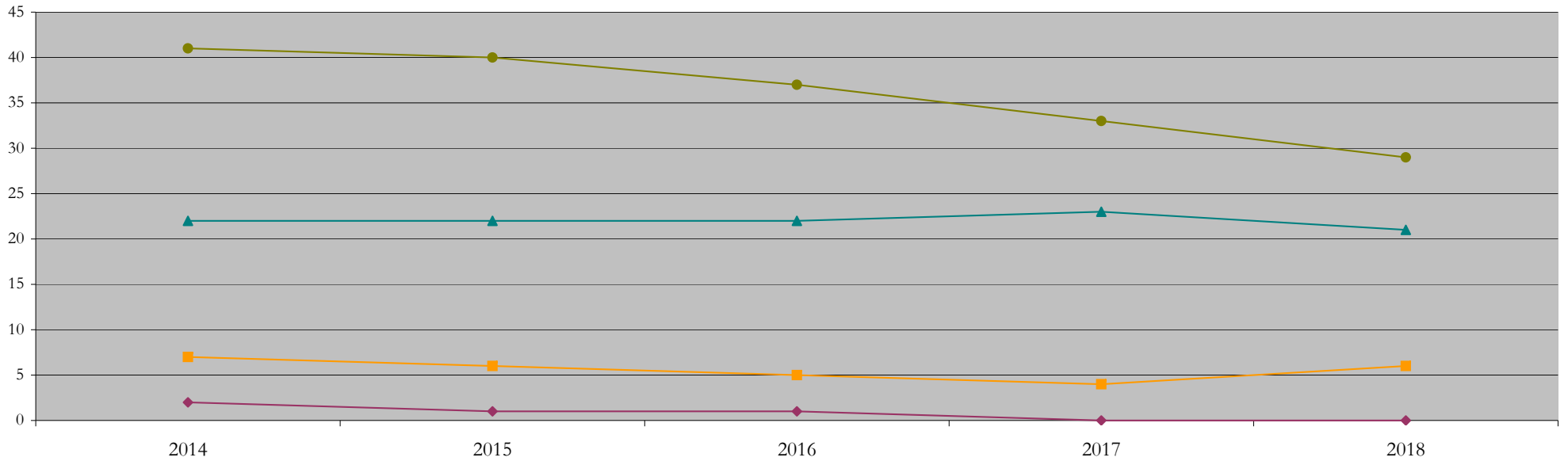
**Total Enrollment (includes secondary curriculum)**

**by Race/Ethnicity**

Economics\_PHD [20FS0074PHD]

Fall 2014 through Fall 2018

Fall Semester Year	Total	Under Represented Minorities (URM)										Asian		Native Hawaiian or Pacific Islander		White		Two or More Races		International		Race/Eth Not Reported
		American Indian or Alaska Native		Black or African American		Hispanic / Latino		URM Total		Count	%	Count	%	Count	%	Count	%	Count	%	Count	%	Count
		Count	%	Count	%	Count	%	Count	%													
2014	72	0	0.0	0	0.0	2	2.8	2	2.8	7	9.7	0	0.0	22	30.6	0	0.0	41	56.9	0		
2015	70	0	0.0	0	0.0	1	1.4	1	1.4	6	8.6	0	0.0	22	31.4	0	0.0	40	57.1	1		
2016	65	0	0.0	0	0.0	1	1.5	1	1.5	5	7.7	0	0.0	22	33.8	0	0.0	37	56.9	0		
2017	60	0	0.0	0	0.0	0	0.0	0	0.0	4	6.7	0	0.0	23	38.3	0	0.0	33	55.0	0		
2018	57	0	0.0	0	0.0	0	0.0	0	0.0	6	10.5	0	0.0	21	36.8	0	0.0	29	50.9	1		



**Notes:** 1) URM stands for Under-Represented Minority and includes American Indian or Alaska Native; Black or African-American; Hispanic / Latino race/ethnicity groups  
 2) Individual URM groups, Native Hawaiian Pacific Islander, Two or More Races, and Other race/ethnicity categories left off this chart due to relatively low numbers

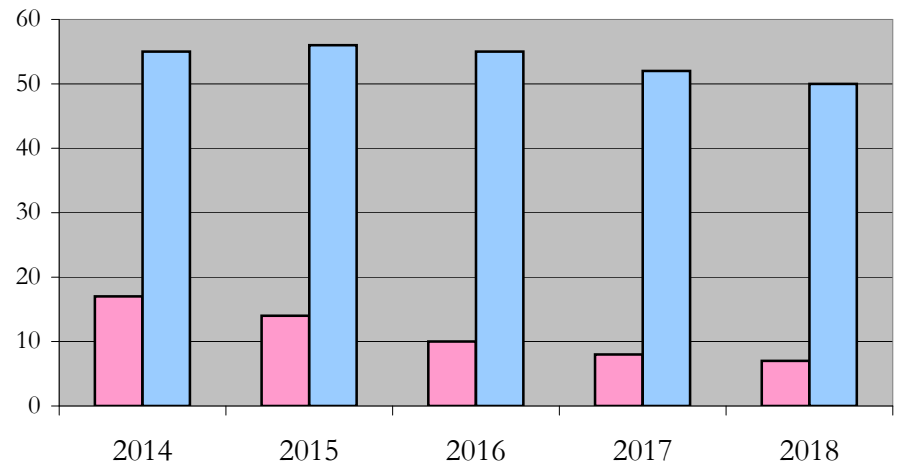
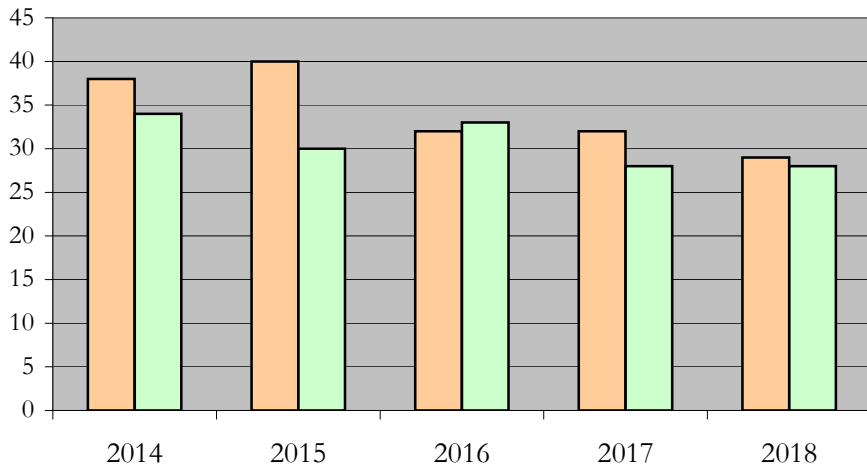
**Total Enrollment (includes secondary curriculum)**

**by Student Type, Gender, and Enrollment Time**

Economics\_PHD [20FS0074PHD]

Fall 2014 through Fall 2018

Fall Semester Year	Total	New		Continuing		Male		Female		Gender Not Reported	Part-time		Full-time	
		Count	%	Count	%	Count	%	Count	%	Count	Count	%	Count	%
2014	72	14	19.4	58	80.6	38	52.8	34	47.2	0	17	23.6	55	76.4
2015	70	15	21.4	55	78.6	40	57.1	30	42.9	0	14	20.0	56	80.0
2016	65	8	12.3	57	87.7	32	49.2	33	50.8	0	10	15.4	55	84.6
2017	60	7	11.7	53	88.3	32	53.3	28	46.7	0	8	13.3	52	86.7
2018	57	6	10.5	51	89.5	29	50.9	28	49.1	0	7	12.3	50	87.7



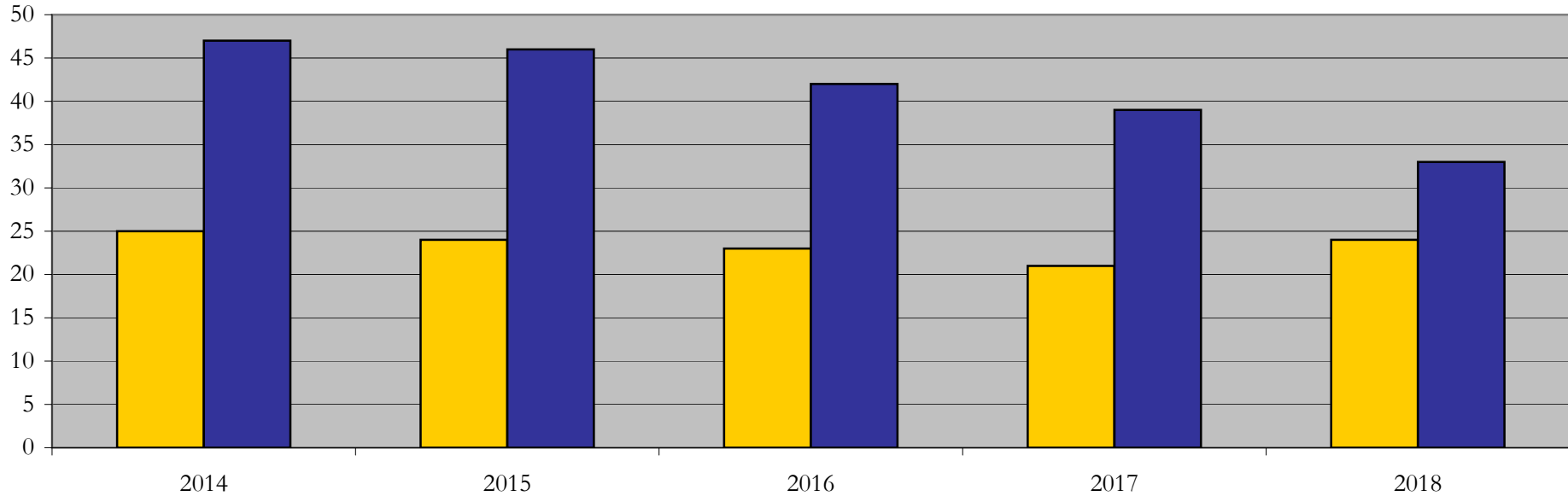
## Enrollment & Degrees Conferred

### by Primary/Secondary, Average Age, State Residency

Economics\_PHD [20FS0074PHD]

Fall 2014 through Fall 2018

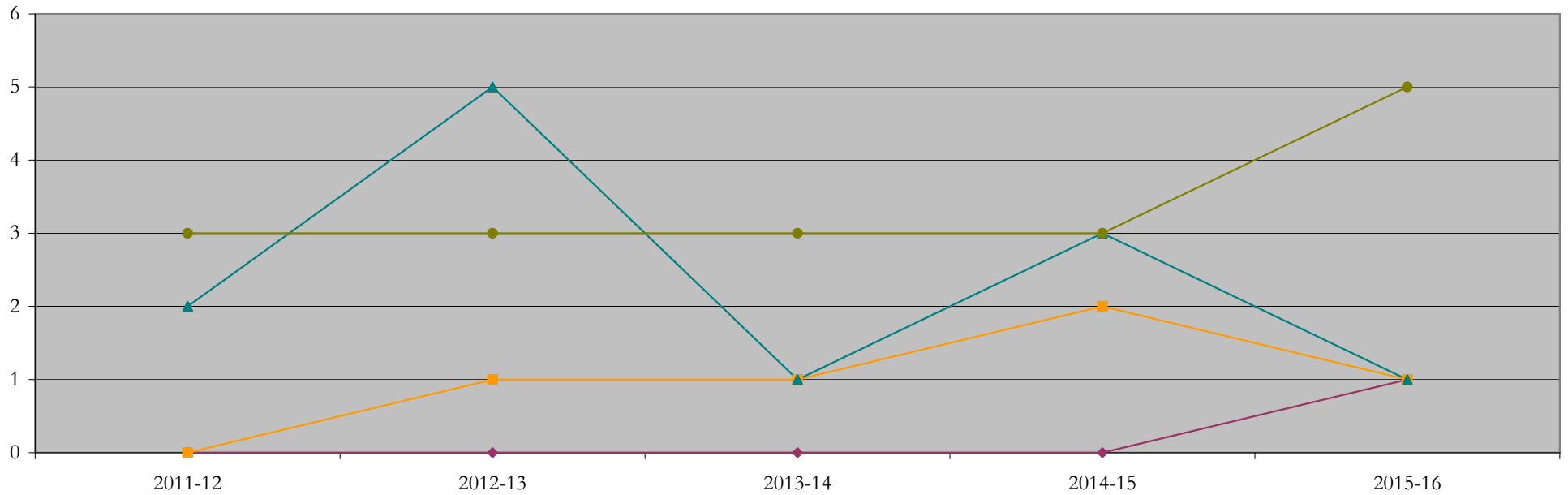
Fall Semester Year	Enrollment			Average Age			State Residency of Total Enrollment					
	Total	Primary	Secondary	Fall New Enrollment	Fall Continuing Enrollment	Academic Year Graduating Class	Residents			Non-Residents		
							Total Enrollment	New Enrollment	Continuing Enrollment	Total Enrollment	New Enrollment	Continuing Enrollment
2014	72	71	1	27	30	31	25	4	21	47	10	37
2015	70	69	1	26	30	31	24	4	20	46	11	35
2016	65	64	1	25	30	35	23	2	21	42	6	36
2017	60	59	1	25	29	29	21	2	19	39	5	34
2018	57	57	0	24	30	35	24	5	19	33	1	32



## Degrees Conferred by Race/Ethnicity

Economics\_PHD [20FS0074PHD]  
AY2011-12 through 2015-16

Academic Year	Total	Under Represented Minorities (URM)								Asian		Native Hawaiian or Pacific		White		Two or More Races		International		Not Reported
		American Indian or Alaska Native		Black or African American		Hispanic / Latino		URM Total		Count	%	Count	%	Count	%	Count	%	Count	%	
		Count	%	Count	%	Count	%	Count	%											
2013 - 2014	5	0	0.0	0	0.0	0	0.0	0	0.0	0	0.0	0	0.0	2	40.0	0	0.0	3	60.0	0
2014 - 2015	9	0	0.0	0	0.0	0	0.0	0	0.0	1	11.1	0	0.0	5	55.6	0	0.0	3	33.3	0
2015 - 2016	7	0	0.0	0	0.0	0	0.0	0	0.0	1	14.3	0	0.0	1	14.3	1	14.3	3	42.9	1
2016 - 2017	8	0	0.0	0	0.0	0	0.0	0	0.0	2	25.0	0	0.0	3	37.5	0	0.0	3	37.5	0
2017 - 2018	8	0	0.0	0	0.0	1	12.5	1	12.5	1	12.5	0	0.0	1	12.5	0	0.0	5	62.5	0



**Notes:** 1) URM stands for Under-Represented Minority and includes American Indian or Alaska Native; Black or African-American; Hispanic / Latino race/ethnicity groups  
2) Individual URM groups, Native Hawaiian Pacific Islander, Two or More Races, and Other race/ethnicity categories left off this chart due to relatively low numbers

## Degrees Conferred

### by Gender

Economics\_PHD [20FS0074PHD]

AY2011-12 through 2015-16

Academic Year	Total	Male		Female		Not Reported
		Count	%	Count	%	
2013 - 2014	5	1	20.0	4	80.0	0
2014 - 2015	9	3	33.3	6	66.7	0
2015 - 2016	7	5	71.4	2	28.6	0
2016 - 2017	8	5	62.5	3	37.5	0
2017 - 2018	8	2	25.0	6	75.0	0

