

# Matriculation

## Diversity Pipeline

Criminal\_Law\_and\_Justice\_PHD [20FS5130PHD]

Fall 2014 through Fall 2018

Fall Semester Year	Applied					Admitted					Non-URM Admitted to Applied Yield %	URM Admitted to Applied Yield %	New Enrollment					Non-URM Enrolled to Admitted Yield %	URM Enrolled to Admitted Yield %	Total Enrollment				
	Grand Total	Non-URM Total		URM Total		Grand Total	Non-URM Total		URM Total				Grand Total	Non-URM Total		URM Total				Grand Total	Non-URM Total		URM Total	
		Count	%	Count	%		Count	%	Count	%				Count	%	Count	%				Count	%	Count	%
2014	37	31	83.8%	6	16.2%	6	4	66.7%	2	33.3%	12.9%	33.3%	6	4	66.7%	2	33.3%	100.0%	100.0%	44	29	65.9%	15	34.1%
2015	37	32	86.5%	5	13.5%	4	3	75.0%	1	25.0%	9.4%	20.0%	2	1	50.0%	1	50.0%	33.3%	100.0%	44	27	61.4%	17	38.6%
2016	22	17	77.3%	5	22.7%	2	2	100.0%	0	0.0%	11.8%	0.0%	1	1	100.0%	0	0.0%	50.0%	0.0%	39	23	59.0%	16	41.0%
2017	29	21	72.4%	8	27.6%	7	5	71.4%	2	28.6%	23.8%	25.0%	3	3	100.0%	0	0.0%	60.0%	0.0%	39	25	64.1%	14	35.9%
2018	18	16	88.9%	2	11.1%	9	7	77.8%	2	22.2%	43.8%	100.0%	2	2	100.0%	0	0.0%	28.6%	0.0%	33	20	60.6%	13	39.4%
<b>Average</b>	<b>29</b>	<b>23</b>	<b>81.8%</b>	<b>5</b>	<b>18.2%</b>	<b>6</b>	<b>4</b>	<b>75.0%</b>	<b>1</b>	<b>25.0%</b>	<b>17.9%</b>	<b>26.9%</b>	<b>3</b>	<b>2</b>	<b>78.6%</b>	<b>1</b>	<b>21.4%</b>	<b>52.4%</b>	<b>42.9%</b>	<b>40</b>	<b>25</b>	<b>62.3%</b>	<b>15</b>	<b>37.7%</b>

**Note:** URM stands for Under-Represented Minority and includes American Indian or Alaska Native; Black or African-American; Hispanic / Latino race/ethnicity groups

# Applications, Admission, & New Enrollment Yields

## by Race/Ethnicity & Gender

Criminal\_Law\_and\_Justice\_PHD [20FS5130PHD]

Fall 2014 through Fall 2018

	Fall Semester Year	Total	Under Represented Minorities (URM)										Race/Eth Not Reported	Male	Female												
			American Indian or Alaska Native		Black or African American		Hispanic / Latino		URM Total		Asian					Native Hawaiian or Pacific Islander		White		Two or More Races		International					
			Count	% Yield	Count	% Yield	Count	% Yield	Count	% Yield	Count	% Yield	Count	% Yield	Count	% Yield	Count	% Yield	Count	% Yield	Count	% Yield	Count	% Yield	Count	% Yield	
Applied	2014	37	0		3		3		6		2		0		15		1		13		0		13		24		
	2015	37	0		3		2		5		0		0		17		1		14		0		13		24		
	2016	22	0		2		3		5		0		0		7		3		7		0		7		15		
	2017	29	0		2		6		8		1		0		14		0		6		0		10		19		
	2018	18	0		0		2		2		0		0		5		0		6		5		3		15		
Admitted	2014	6	16.2	0	0.0	1	33.3	1	33.3	2	33.3	0	0.0	0	0.0	3	20.0	1	100.0	0	0.0	0	0.0	1	7.7	5	20.8
	2015	4	10.8	0	0.0	1	33.3	0	0.0	1	20.0	0	0.0	0	0.0	2	11.8	0	0.0	1	7.1	0	0.0	1	7.7	3	12.5
	2016	2	9.1	0	0.0	0	0.0	0	0.0	0	0.0	0	0.0	0	0.0	2	28.6	0	0.0	0	0.0	0	0.0	1	14.3	1	6.7
	2017	7	24.1	0	0.0	0	0.0	2	33.3	2	25.0	0	0.0	0	0.0	4	28.6	0	0.0	1	16.7	0	0.0	1	10.0	6	31.6
	2018	9	50.0	0	0.0	0	0.0	2	100.0	2	100.0	0	0.0	0	0.0	3	60.0	0	0.0	1	16.7	3	0.0	0	0.0	9	60.0
Enrolled	2014	6	100.0	0	0.0	1	100.0	1	100.0	2	100.0	0	0.0	0	0.0	3	100.0	1	100.0	0	0.0	0	0.0	1	100.0	5	100.0
	2015	2	50.0	0	0.0	1	100.0	0	0.0	1	100.0	0	0.0	0	0.0	1	50.0	0	0.0	0	0.0	0	0.0	1	100.0	1	33.3
	2016	1	50.0	0	0.0	0	0.0	0	0.0	0	0.0	0	0.0	0	0.0	1	50.0	0	0.0	0	0.0	0	0.0	0	0.0	1	100.0
	2017	3	42.9	0	0.0	0	0.0	0	0.0	0	0.0	0	0.0	0	0.0	2	50.0	0	0.0	1	100.0	0	0.0	1	100.0	2	33.3
	2018	2	22.2	0	0.0	0	0.0	0	0.0	0	0.0	0	0.0	0	0.0	1	33.3	0	0.0	1	100.0	0	0.0	0	0.0	2	22.2

**Notes:**

- 1) URM stands for Under-Represented Minority and includes American Indian or Alaska Native; Black or African-American; Hispanic / Latino race/ethnicity groups
- 2) Unreported Gender identification is not shown; Male and Female total may not match Total
- 3) In rare situations, the "% Yield" columns may be greater than 100. There are three potential reasons for this:
  - a) Students that received Graduate College approved transfers may not have an admission record for the program that they enrolled into.
  - b) Students with a secondary curriculum enrollment may not have an admission record for that secondary program.
  - c) Students who were newly enrolled in the summer term prior to the fall were added to the fall new enrollment totals.

# Applications, Admission, & New Enrollment Yields, cont. by Race/Ethnicity & Gender

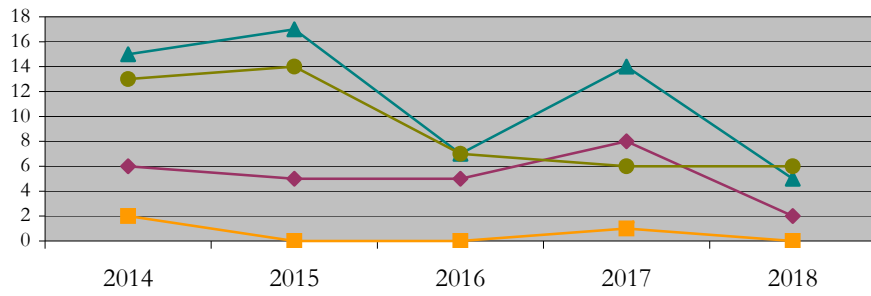
Criminal\_Law\_and\_Justice\_PHD [20FS5130PHD]

Fall 2014 through Fall 2018

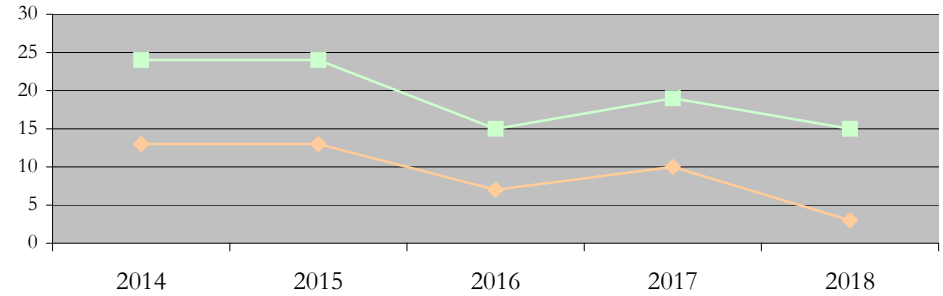
URM Total Asian White International

Male Female

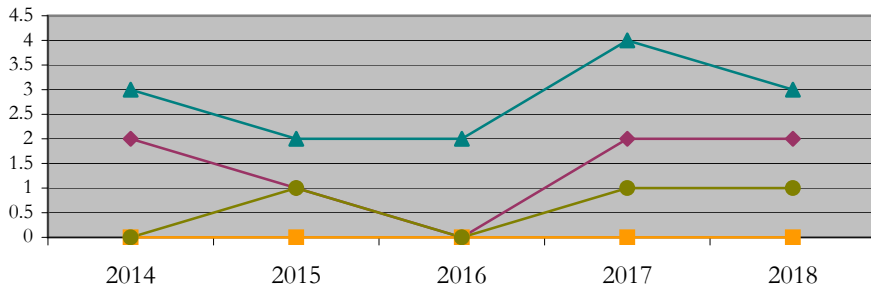
Applications by Race/Ethnicity



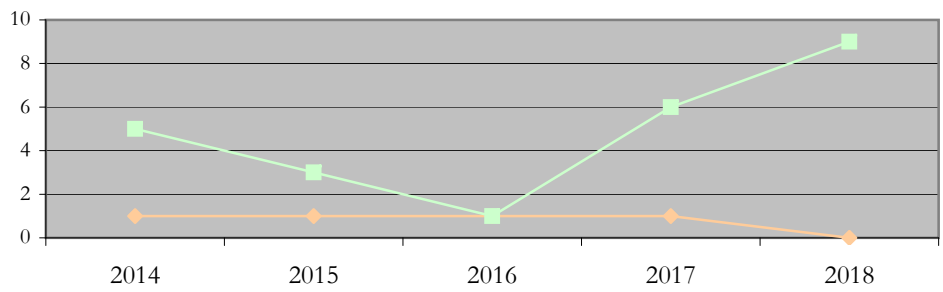
Applications by Gender



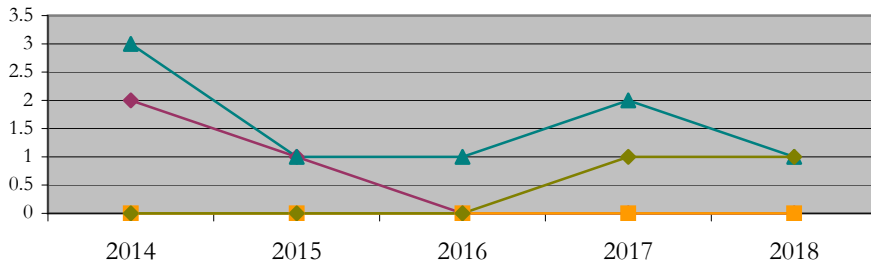
Admissions by Race/Ethnicity



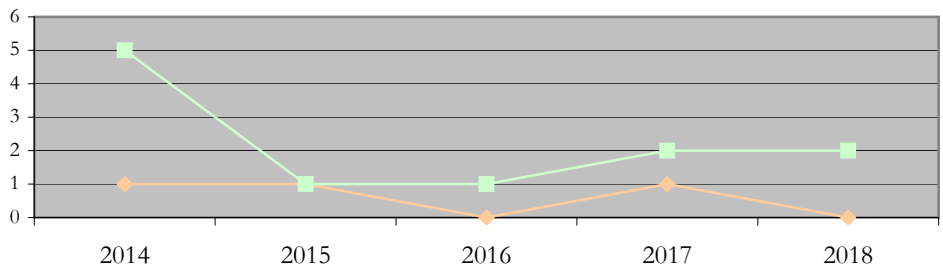
Admissions by Gender



New Enrollments by Race/Ethnicity



New Enrollments by Gender



**Notes:** 1) URM stands for Under-Represented Minority and includes American Indian or Alaska Native; Black or African-American; Hispanic / Latino race/ethnicity groups  
2) Individual URM groups, Native Hawaiian Pacific Islander, Two or More Races, and Other race/ethnicity categories left off these charts due to relatively low numbers

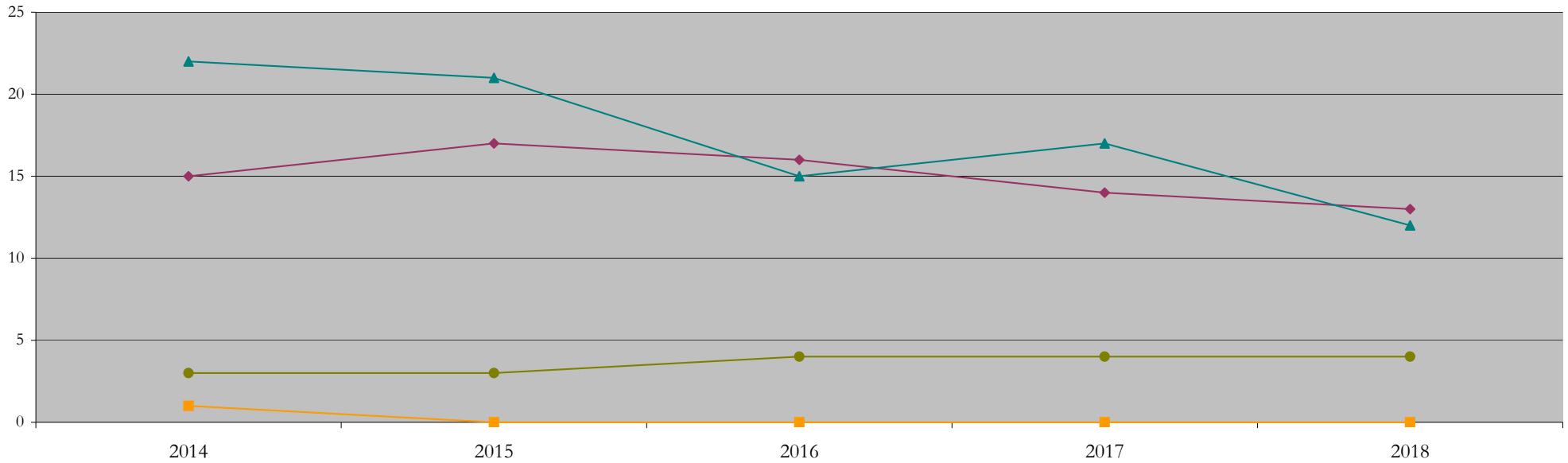
**Total Enrollment (includes secondary curriculum)**

**by Race/Ethnicity**

Criminal\_Law\_and\_Justice\_PHD [20FS5130PHD]

Fall 2014 through Fall 2018

Fall Semester Year	Total	Under Represented Minorities (URM)																		
		American Indian or Alaska Native		Black or African American		Hispanic / Latino		URM Total		Asian		Native Hawaiian or Pacific Islander		White		Two or More Races		International		Race/Eth Not Reported
		Count	%	Count	%	Count	%	Count	%	Count	%	Count	%	Count	%	Count	%	Count	%	Count
2014	44	0	0.0	7	15.9	8	18.2	15	34.1	1	2.3	1	2.3	22	50.0	2	4.5	3	6.8	0
2015	44	0	0.0	9	20.5	8	18.2	17	38.6	0	0.0	1	2.3	21	47.7	2	4.5	3	6.8	0
2016	39	0	0.0	8	20.5	8	20.5	16	41.0	0	0.0	1	2.6	15	38.5	3	7.7	4	10.3	0
2017	39	0	0.0	8	20.5	6	15.4	14	35.9	0	0.0	1	2.6	17	43.6	3	7.7	4	10.3	0
2018	33	0	0.0	8	24.2	5	15.2	13	39.4	0	0.0	1	3.0	12	36.4	3	9.1	4	12.1	0



**Notes:** 1) URM stands for Under-Represented Minority and includes American Indian or Alaska Native; Black or African-American; Hispanic / Latino race/ethnicity groups  
 2) Individual URM groups, Native Hawaiian Pacific Islander, Two or More Races, and Other race/ethnicity categories left off this chart due to relatively low numbers

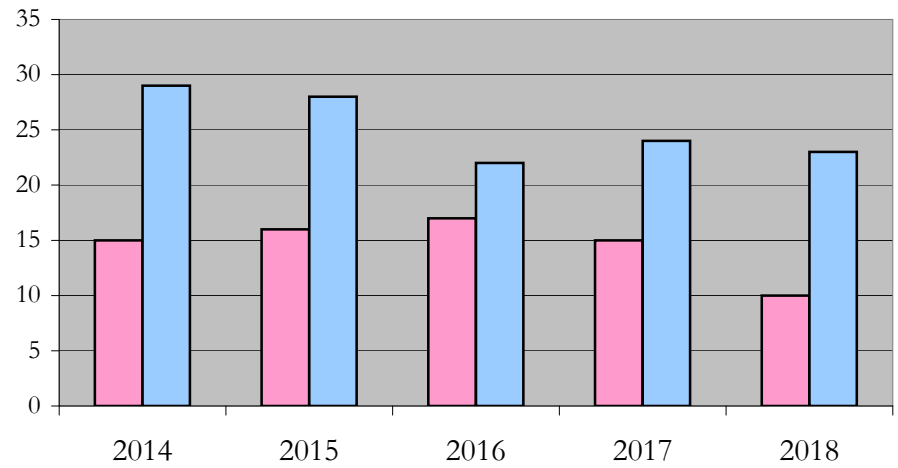
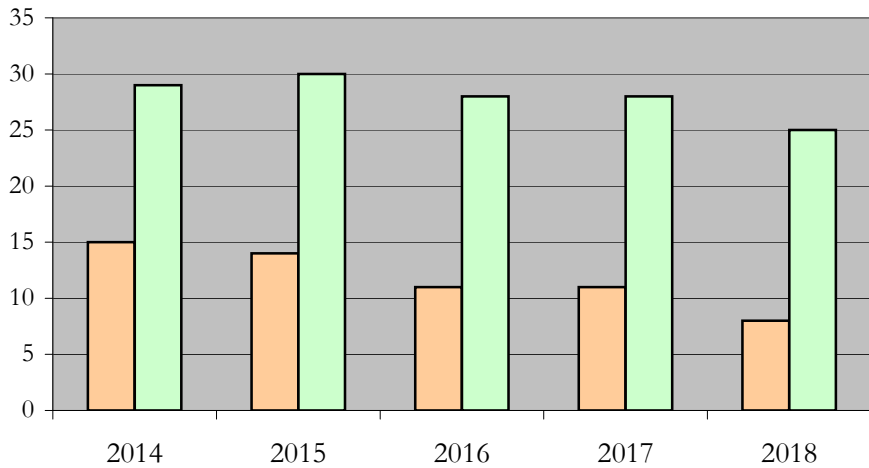
**Total Enrollment (includes secondary curriculum)**

**by Student Type, Gender, and Enrollment Time**

Criminal\_Law\_and\_Justice\_PHD [20FS5130PHD]

Fall 2014 through Fall 2018

Fall Semester Year	Total	New		Continuing		Male		Female		Gender Not Reported	Part-time		Full-time	
		Count	%	Count	%	Count	%	Count	%	Count	Count	%	Count	%
2014	44	6	13.6	38	86.4	15	34.1	29	65.9	0	15	34.1	29	65.9
2015	44	2	4.5	42	95.5	14	31.8	30	68.2	0	16	36.4	28	63.6
2016	39	1	2.6	38	97.4	11	28.2	28	71.8	0	17	43.6	22	56.4
2017	39	3	7.7	36	92.3	11	28.2	28	71.8	0	15	38.5	24	61.5
2018	33	2	6.1	31	93.9	8	24.2	25	75.8	0	10	30.3	23	69.7



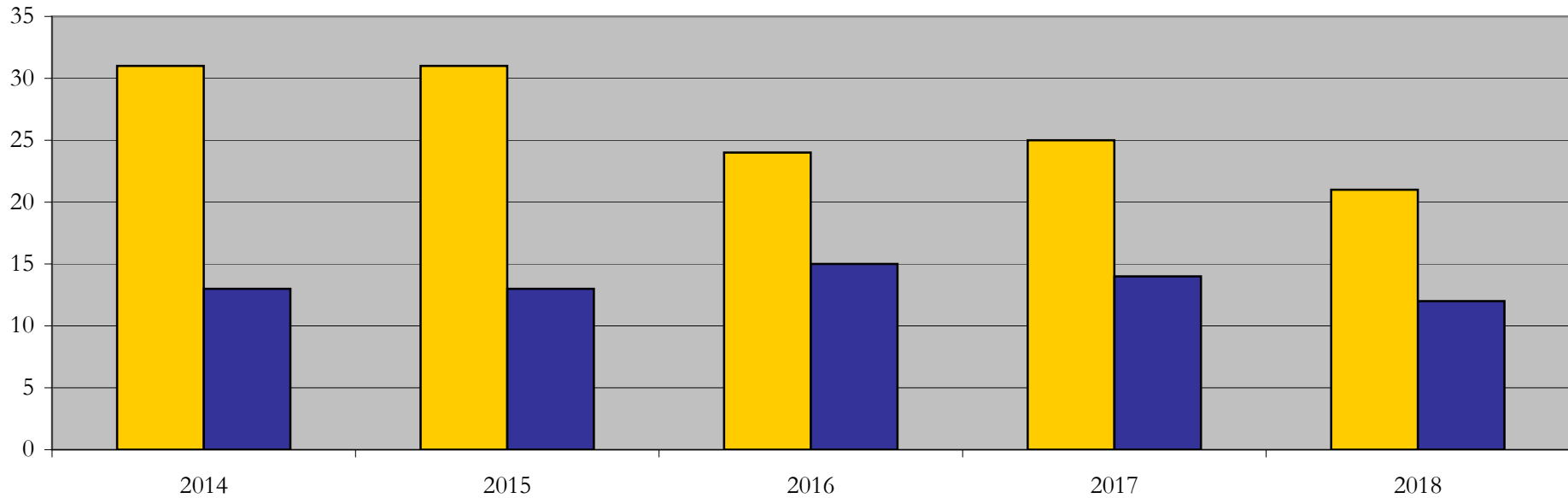
## Enrollment & Degrees Conferred

### by Primary/Secondary, Average Age, State Residency

Criminal\_Law\_and\_Justice\_PHD [20FS5130PHD]

Fall 2014 through Fall 2018

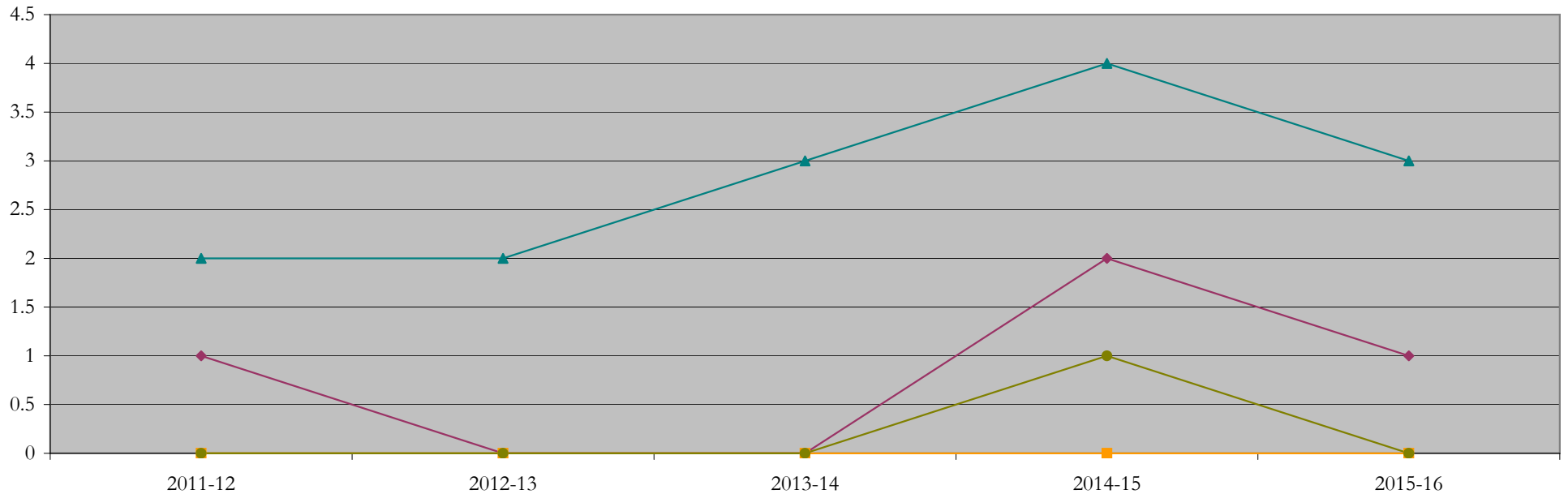
Fall Semester Year	Enrollment			Average Age			State Residency of Total Enrollment					
	Total	Primary	Secondary	Fall New Enrollment	Fall Continuing Enrollment	Academic Year Graduating Class	Residents			Non-Residents		
							Total Enrollment	New Enrollment	Continuing Enrollment	Total Enrollment	New Enrollment	Continuing Enrollment
2014	44	43	1	29	35	33	31	5	26	13	1	12
2015	44	43	1	35	34	34	31	2	29	13	0	13
2016	39	38	1	25	33	31	24	0	24	15	1	14
2017	39	38	1	25	35	39	25	3	22	14	0	14
2018	33	33	0	30	35	30	21	0	21	12	2	10



## Degrees Conferred by Race/Ethnicity

Criminal\_Law\_and\_Justice\_PHD [20FS5130PHD]  
AY2011-12 through 2015-16

Academic Year	Total	Under Represented Minorities (URM)								Asian		Native Hawaiian or Pacific		White		Two or More Races		International		Not Reported
		American Indian or Alaska Native		Black or African American		Hispanic / Latino		URM Total		Count	%	Count	%	Count	%	Count	%	Count	%	
		Count	%	Count	%	Count	%	Count	%											
2013 - 2014	3	0	0.0	1	33.3	0	0.0	1	33.3	0	0.0	0	0.0	2	66.7	0	0.0	0	0.0	0
2014 - 2015	2	0	0.0	0	0.0	0	0.0	0	0.0	0	0.0	0	0.0	2	100.0	0	0.0	0	0.0	0
2015 - 2016	3	0	0.0	0	0.0	0	0.0	0	0.0	0	0.0	0	0.0	3	100.0	0	0.0	0	0.0	0
2016 - 2017	7	0	0.0	1	14.3	1	14.3	2	28.6	0	0.0	0	0.0	4	57.1	0	0.0	1	14.3	0
2017 - 2018	4	0	0.0	0	0.0	1	25.0	1	25.0	0	0.0	0	0.0	3	75.0	0	0.0	0	0.0	0



**Notes:** 1) URM stands for Under-Represented Minority and includes American Indian or Alaska Native; Black or African-American; Hispanic / Latino race/ethnicity groups  
2) Individual URM groups, Native Hawaiian Pacific Islander, Two or More Races, and Other race/ethnicity categories left off this chart due to relatively low numbers

## Degrees Conferred

### by Gender

Criminal\_Law\_and\_Justice\_PHD [20FS5130PHD]

AY2011-12 through 2015-16

Academic Year	Total	Male		Female		Not Reported
		Count	%	Count	%	
2013 - 2014	3	2	66.7	1	33.3	0
2014 - 2015	2	0	0.0	2	100.0	0
2015 - 2016	3	3	100.0	0	0.0	0
2016 - 2017	7	3	42.9	4	57.1	0
2017 - 2018	4	0	0.0	4	100.0	0

