

# Matriculation

## Diversity Pipeline

Chemistry\_PHD [20FS0335PHD]

Fall 2013 through Fall 2017

Fall Semester Year	Applied					Admitted					Non-URM Admitted to Applied Yield %	URM Admitted to Applied Yield %	New Enrollment					Non-URM Enrolled to Admitted Yield %	URM Enrolled to Admitted Yield %	Total Enrollment				
	Grand Total	Non-URM Total		URM Total		Grand Total	Non-URM Total		URM Total				Grand Total	Non-URM Total		URM Total				Grand Total	Non-URM Total		URM Total	
		Count	%	Count	%		Count	%	Count	%				Count	%	Count	%				Count	%	Count	%
2013	111	106	95.5%	5	4.5%	50	46	92.0%	4	8.0%	43.4%	80.0%	22	20	90.9%	2	9.1%	43.5%	50.0%	137	131	95.6%	6	4.4%
2014	113	109	96.5%	4	3.5%	44	42	95.5%	2	4.5%	38.5%	50.0%	22	21	95.5%	1	4.5%	50.0%	50.0%	129	123	95.3%	6	4.7%
2015	114	112	98.2%	2	1.8%	50	49	98.0%	1	2.0%	43.8%	50.0%	20	20	100.0%	0	0.0%	40.8%	0.0%	126	122	96.8%	4	3.2%
2016	134	123	91.8%	11	8.2%	50	44	88.0%	6	12.0%	35.8%	54.5%	25	22	88.0%	3	12.0%	50.0%	50.0%	134	129	96.3%	5	3.7%
2017	157	147	93.6%	10	6.4%	65	60	92.3%	5	7.7%	40.8%	50.0%	34	31	91.2%	3	8.8%	51.7%	60.0%	145	138	95.2%	7	4.8%
<b>Average</b>	<b>126</b>	<b>119</b>	<b>94.9%</b>	<b>6</b>	<b>5.1%</b>	<b>52</b>	<b>48</b>	<b>93.1%</b>	<b>4</b>	<b>6.9%</b>	<b>40.4%</b>	<b>56.3%</b>	<b>25</b>	<b>23</b>	<b>92.7%</b>	<b>2</b>	<b>7.3%</b>	<b>47.3%</b>	<b>50.0%</b>	<b>134</b>	<b>129</b>	<b>95.8%</b>	<b>5.6</b>	<b>4.2%</b>

**Note:** URM stands for Under-Represented Minority and includes American Indian or Alaska Native; Black or African-American; Hispanic / Latino race/ethnicity groups

# Applications, Admission, & New Enrollment Yields

## by Race/Ethnicity & Gender

Chemistry\_PHD [20FS0335PHD]

Fall 2013 through Fall 2017

	Fall Semester Year	Total	Under Represented Minorities (URM)										Race/Eth Not Reported	Male	Female													
			American Indian or Alaska Native		Black or African American		Hispanic / Latino		URM Total		Asian					Native Hawaiian or Pacific Islander		White		Two or More Races		International						
		Count	% Yield	Count	% Yield	Count	% Yield	Count	% Yield	Count	% Yield	Count	% Yield	Count	% Yield	Count	% Yield	Count	% Yield	Count	% Yield	Count	% Yield	Count	% Yield	Count	% Yield	
Applied	2013	111		0		4		1		5		4		0		35		4		61		2		67		44		
	2014	113		0		1		3		4		5		0		29		1		73		1		73		40		
	2015	114		0		1		1		2		1		0		24		0		85		2		60		54		
	2016	134		1		4		6		11		6		0		29		0		88		0		84		49		
	2017	157		0		3		7		10		7		0		31		2		106		1		86		71		
Admitted	2013	50	45.0	0	0.0	3	75.0	1	100.0	4	80.0	1	25.0	0	0.0	20	57.1	4	100.0	20	32.8	1		30	44.8	20	45.5	
	2014	44	38.9	0	0.0	1	100.0	1	33.3	2	50.0	1	20.0	0	0.0	10	34.5	0	0.0	31	42.5	0		27	37.0	17	42.5	
	2015	50	43.9	0	0.0	0	0.0	1	100.0	1	50.0	0	0.0	0	0.0	14	58.3	0	0.0	33	38.8	2		33	55.0	17	31.5	
	2016	50	37.3	1	100.0	2	50.0	3	50.0	6	54.5	2	33.3	0	0.0	18	62.1	0	0.0	24	27.3	0		27	32.1	23	46.9	
	2017	65	41.4	0	0.0	1	33.3	4	57.1	5	50.0	3	42.9	0	0.0	21	67.7	1	50.0	35	33.0	0		34	39.5	31	43.7	
Enrolled	2013	22	44.0	0	0.0	1	33.3	1	100.0	2	50.0	1	100.0	0	0.0	6	30.0	0	0.0	12	60.0	1		14	46.7	8	40.0	
	2014	22	50.0	0	0.0	0	0.0	1	100.0	1	50.0	0	0.0	0	0.0	5	50.0	0	0.0	16	51.6	0		13	48.1	9	52.9	
	2015	20	40.0	0	0.0	0	0.0	0	0.0	0	0.0	0	0.0	0	0.0	5	35.7	0	0.0	15	45.5	0		14	42.4	6	35.3	
	2016	25	50.0	1	100.0	2	100.0	0	0.0	3	50.0	2	100.0	0	0.0	10	55.6	0	0.0	10	41.7	0		16	59.3	9	39.1	
	2017	34	52.3	0	0.0	0	0.0	3	75.0	3	60.0	0	0.0	0	0.0	9	42.9	1	100.0	21	60.0	0		20	58.8	14	45.2	

**Notes:**

- 1) URM stands for Under-Represented Minority and includes American Indian or Alaska Native; Black or African-American; Hispanic / Latino race/ethnicity groups
- 2) Unreported Gender identification is not shown; Male and Female total may not match Total
- 3) In rare situations, the "% Yield" columns may be greater than 100. There are three potential reasons for this:
  - a) Students that received Graduate College approved transfers may not have an admission record for the program that they enrolled into.
  - b) Students with a secondary curriculum enrollment may not have an admission record for that secondary program.
  - c) Students who were newly enrolled in the summer term prior to the fall were added to the fall new enrollment totals.

# Applications, Admission, & New Enrollment Yields, cont.

## by Race/Ethnicity & Gender

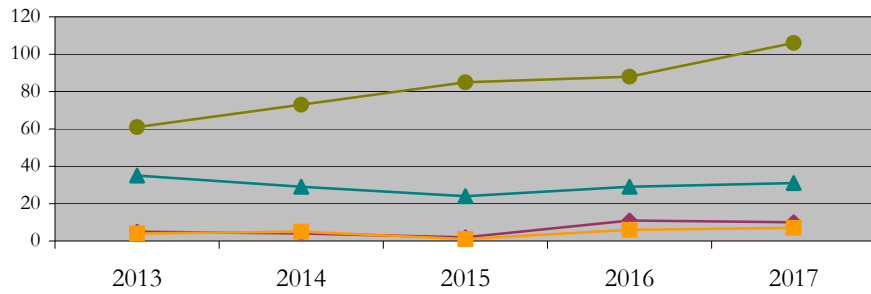
Chemistry\_PHD [20FS0335PHD]

Fall 2013 through Fall 2017

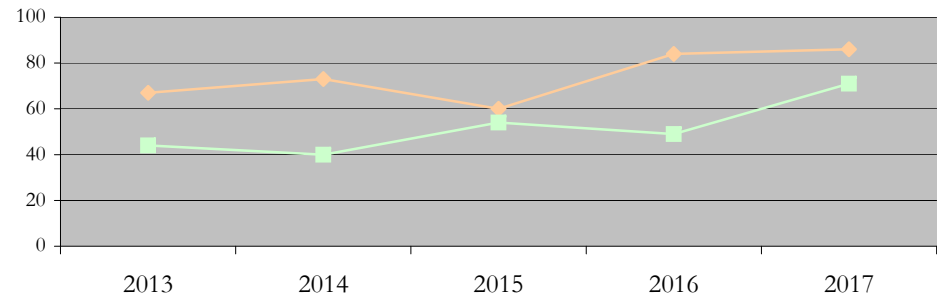
URM Total Asian White International

Male Female

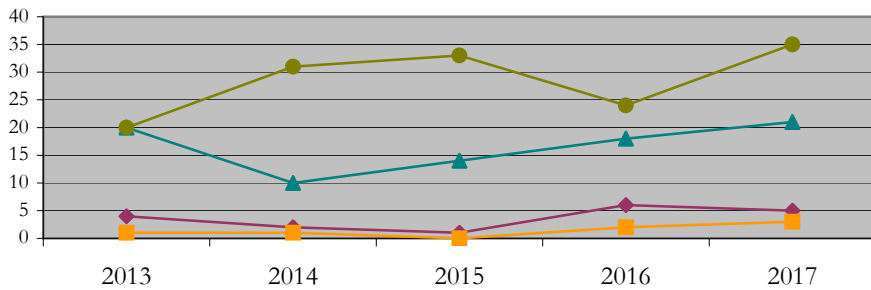
Applications by Race/Ethnicity



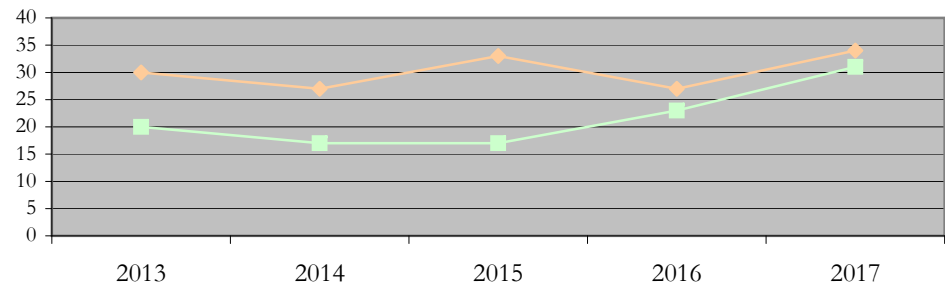
Applications by Gender



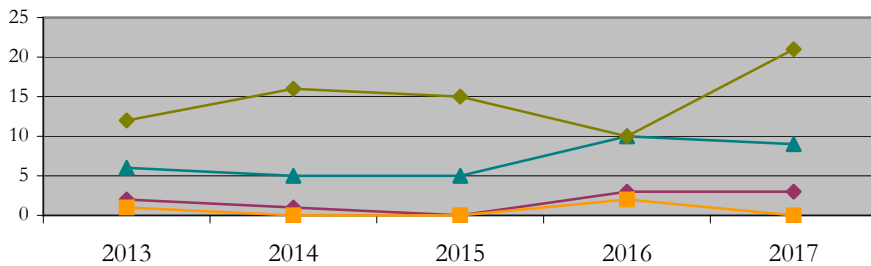
Admissions by Race/Ethnicity



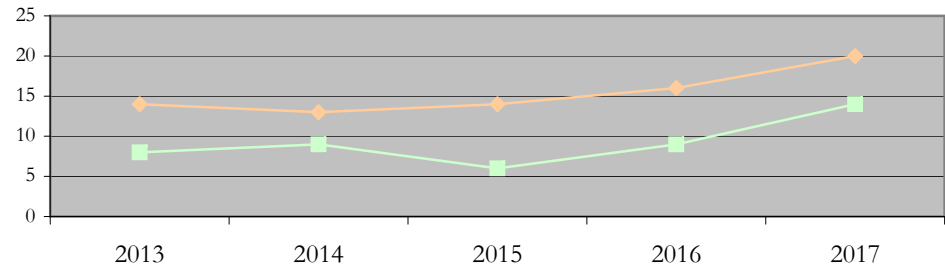
Admissions by Gender



New Enrollments by Race/Ethnicity



New Enrollments by Gender



**Notes:** 1) URM stands for Under-Represented Minority and includes American Indian or Alaska Native; Black or African-American; Hispanic / Latino race/ethnicity groups  
 2) Individual URM groups, Native Hawaiian Pacific Islander, Two or More Races, and Other race/ethnicity categories left off these charts due to relatively low numbers

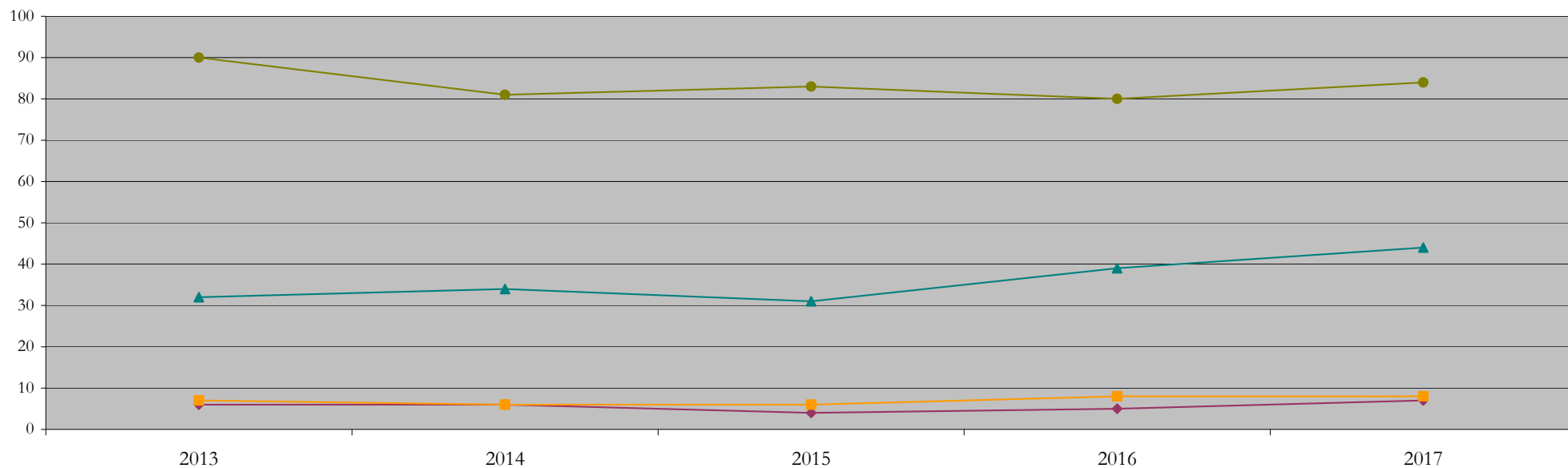
## Total Enrollment (includes secondary curriculum)

### by Race/Ethnicity

Chemistry\_PHD [20FS0335PHD]

Fall 2013 through Fall 2017

Fall Semester Year	Total	Under Represented Minorities (URM)																		
		American Indian or Alaska Native		Black or African American		Hispanic / Latino		URM Total		Asian		Native Hawaiian or Pacific Islander		White		Two or More Races		International		Race/Eth Not Reported
		Count	%	Count	%	Count	%	Count	%	Count	%	Count	%	Count	%	Count	%	Count	%	Count
2013	137	0	0.0	2	1.5	4	2.9	6	4.4	7	5.1	0	0.0	32	23.4	0	0.0	90	65.7	2
2014	129	0	0.0	1	0.8	5	3.9	6	4.7	6	4.7	0	0.0	34	26.4	0	0.0	81	62.8	2
2015	126	0	0.0	1	0.8	3	2.4	4	3.2	6	4.8	0	0.0	31	24.6	0	0.0	83	65.9	2
2016	134	0	0.0	3	2.2	2	1.5	5	3.7	8	6.0	0	0.0	39	29.1	1	0.7	80	59.7	1
2017	145	0	0.0	2	1.4	5	3.4	7	4.8	8	5.5	0	0.0	44	30.3	2	1.4	84	57.9	0



**Notes:** 1) URM stands for Under-Represented Minority and includes American Indian or Alaska Native; Black or African-American; Hispanic / Latino race/ethnicity groups  
 2) Individual URM groups, Native Hawaiian Pacific Islander, Two or More Races, and Other race/ethnicity categories left off this chart due to relatively low numbers

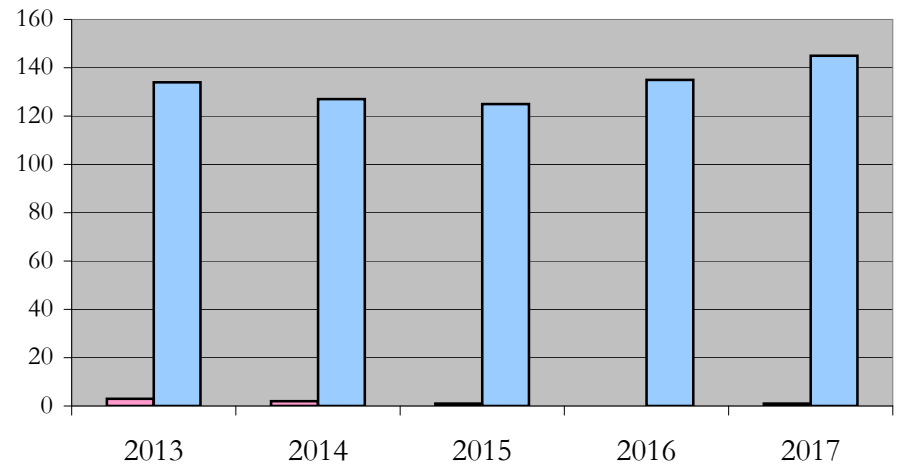
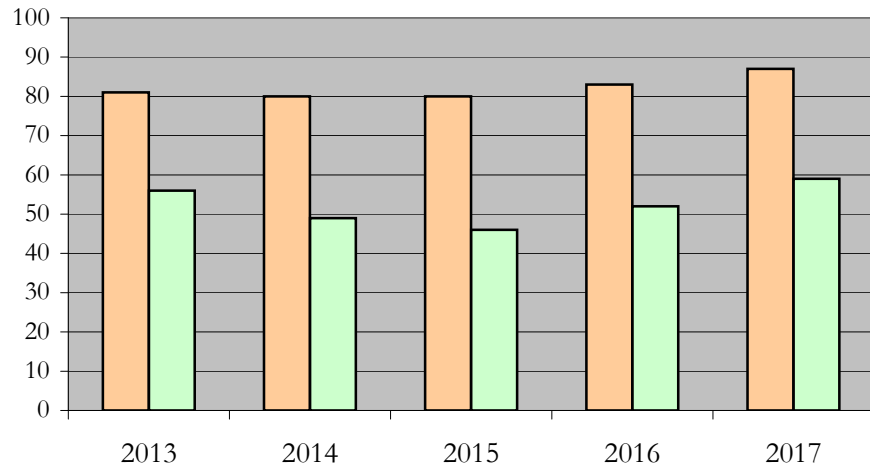
**Total Enrollment (includes secondary curriculum)**

**by Student Type, Gender, and Enrollment Time**

Chemistry\_PHD [20FS0335PHD]

Fall 2013 through Fall 2017

Fall Semester Year	Total	New		Continuing		Male		Female		Gender Not Reported	Part-time		Full-time	
		Count	%	Count	%	Count	%	Count	%	Count	Count	%	Count	%
2013	137	22	16.1	115	83.9	81	59.1	56	40.9	0	3	2.2	134	97.8
2014	129	22	17.1	107	82.9	80	62.0	49	38.0	0	2	1.6	127	98.4
2015	126	20	15.9	106	84.1	80	63.5	46	36.5	0	1	0.8	125	99.2
2016	134	25	18.7	109	81.3	83	61.9	52	38.8	-1	0	0.0	135	100.7
2017	145	34	23.4	111	76.6	87	60.0	59	40.7	-1	1	0.7	145	100.0



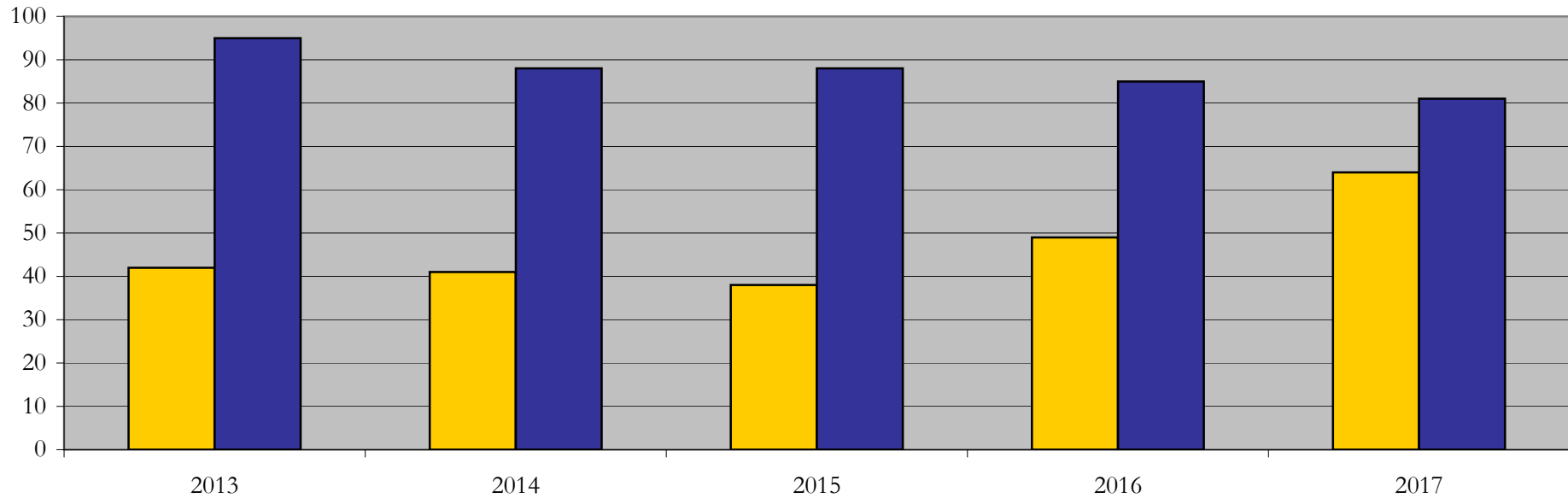
## Enrollment & Degrees Conferred

### by Primary/Secondary, Average Age, State Residency

Chemistry\_PHD [20FS0335PHD]

Fall 2013 through Fall 2017

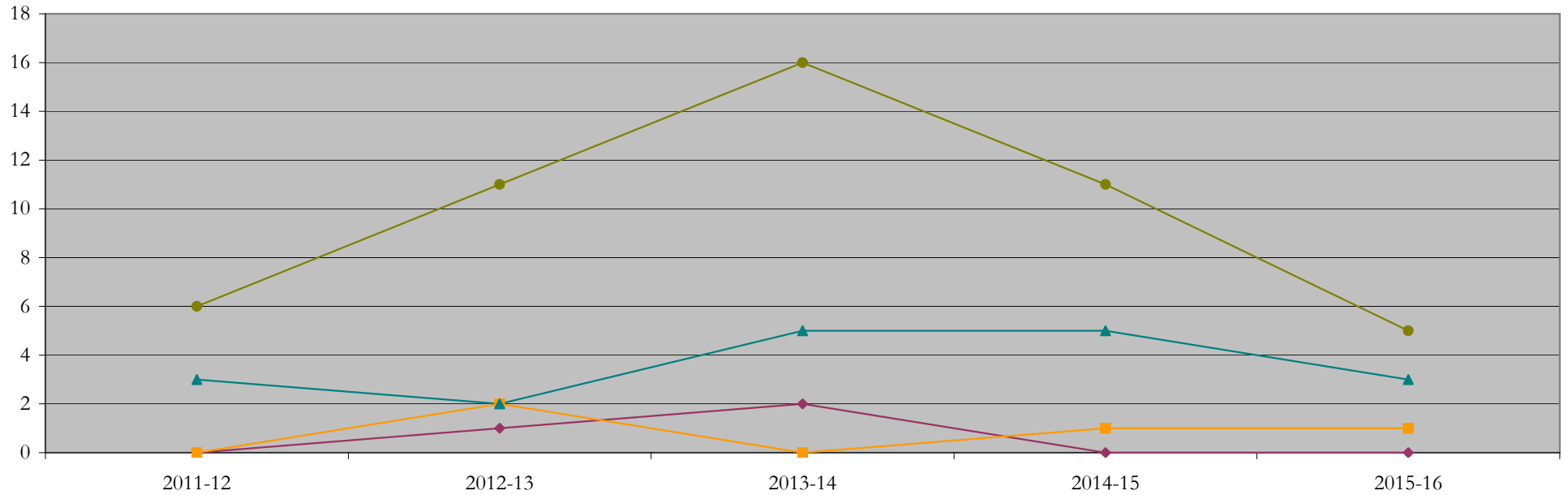
Fall Semester Year	Enrollment			Average Age			State Residency of Total Enrollment					
	Total	Primary	Secondary	Fall New Enrollment	Fall Continuing Enrollment	Academic Year Graduating Class	Residents			Non-Residents		
							Total Enrollment	New Enrollment	Continuing Enrollment	Total Enrollment	New Enrollment	Continuing Enrollment
2013	137	137	0	24	28	31	42	8	34	95	14	81
2014	129	129	0	26	28	30	41	7	34	88	15	73
2015	126	126	0	25	28	27	38	4	34	88	16	72
2016	134	134	0	25	28	29	49	14	35	85	11	74
2017	145	145	0	26	28	28	64	20	44	81	14	67



## Degrees Conferred by Race/Ethnicity

Chemistry\_PHD [20FS0335PHD]  
AY2011-12 through 2015-16

Academic Year	Total	Under Represented Minorities (URM)								Asian		Native Hawaiian or Pacific		White		Two or More Races		International		Not Reported
		American Indian or Alaska Native		Black or African American		Hispanic / Latino		URM Total		Count	%	Count	%	Count	%	Count	%	Count	%	
		Count	%	Count	%	Count	%	Count	%											
2012 - 2013	10	0	0.0	0	0.0	0	0.0	0	0.0	0	0.0	0	0.0	3	30.0	0	0.0	6	60.0	1
2013 - 2014	16	0	0.0	1	6.3	0	0.0	1	6.3	2	12.5	0	0.0	2	12.5	0	0.0	11	68.8	0
2014 - 2015	23	0	0.0	1	4.3	1	4.3	2	8.7	0	0.0	0	0.0	5	21.7	0	0.0	16	69.6	0
2015 - 2016	17	0	0.0	0	0.0	0	0.0	0	0.0	1	5.9	0	0.0	5	29.4	0	0.0	11	64.7	0
2016 - 2017	9	0	0.0	0	0.0	0	0.0	0	0.0	1	11.1	0	0.0	3	33.3	0	0.0	5	55.6	0



**Notes:** 1) URM stands for Under-Represented Minority and includes American Indian or Alaska Native; Black or African-American; Hispanic / Latino race/ethnicity groups  
2) Individual URM groups, Native Hawaiian Pacific Islander, Two or More Races, and Other race/ethnicity categories left off this chart due to relatively low numbers

## Degrees Conferred

### by Gender

Chemistry\_PHD [20FS0335PHD]

AY2011-12 through 2015-16

Academic Year	Total	Male		Female		Not Reported
		Count	%	Count	%	
2012 - 2013	10	6	60.0	4	40.0	0
2013 - 2014	16	9	56.3	7	43.8	0
2014 - 2015	23	11	47.8	12	52.2	0
2015 - 2016	17	11	64.7	6	35.3	0
2016 - 2017	9	6	66.7	3	33.3	0

