

Matriculation

Diversity Pipeline

Biological_Sciences_PHD [20FS1072PHD]

Fall 2013 through Fall 2017

Fall Semester Year	Applied					Admitted					Non-URM Admitted to Applied Yield %	URM Admitted to Applied Yield %	New Enrollment					Non-URM Enrolled to Admitted Yield %	URM Enrolled to Admitted Yield %	Total Enrollment						
	Grand Total	Non-URM Total		URM Total		Grand Total	Non-URM Total		URM Total				Grand Total	Non-URM Total		URM Total				Grand Total	Non-URM Total		URM Total			
		Count	%	Count	%		Count	%	Count	%				Count	%	Count	%				Count	%	Count	%	Count	%
2013	112	104	92.9%	8	7.1%	32	28	87.5%	4	12.5%	26.9%	50.0%	14	12	85.7%	2	14.3%	42.9%	50.0%	99	85	85.9%	14	14.1%		
2014	101	90	89.1%	11	10.9%	36	33	91.7%	3	8.3%	36.7%	27.3%	23	22	95.7%	1	4.3%	66.7%	33.3%	102	88	86.3%	14	13.7%		
2015	119	107	89.9%	12	10.1%	25	24	96.0%	1	4.0%	22.4%	8.3%	13	12	92.3%	1	7.7%	50.0%	100.0%	104	90	86.5%	14	13.5%		
2016	91	81	89.0%	10	11.0%	24	22	91.7%	2	8.3%	27.2%	20.0%	17	16	94.1%	1	5.9%	72.7%	50.0%	104	90	86.5%	14	13.5%		
2017	80	72	90.0%	8	10.0%	10	9	90.0%	1	10.0%	12.5%	12.5%	10	9	90.0%	1	10.0%	100.0%	100.0%	98	84	85.7%	14	14.3%		
Average	101	91	90.3%	10	9.7%	25	23	91.3%	2	8.7%	25.6%	22.4%	15	14	92.2%	1	7.8%	61.2%	54.5%	101	87	86.2%	14	13.8%		

Note: URM stands for Under-Represented Minority and includes American Indian or Alaska Native; Black or African-American; Hispanic / Latino race/ethnicity groups

Applications, Admission, & New Enrollment Yields

by Race/Ethnicity & Gender

Biological_Sciences_PHD [20FS1072PHD]

Fall 2013 through Fall 2017

	Fall Semester Year	Total		Under Represented Minorities (URM)								Asian	Native Hawaiian or Pacific Islander	White	Two or More Races	International	Race/Eth Not Reported	Male	Female							
				American Indian or Alaska Native		Black or African American		Hispanic / Latino		URM Total																
Applied	2013	112		0	2	6	8	2	0	41	1	60	0	44	68											
	2014	101		0	4	7	11	8	0	35	4	39	4	43	55											
	2015	119		0	3	9	12	4	0	38	2	63	0	45	74											
	2016	91		0	2	8	10	7	0	20	1	51	2	42	49											
	2017	80		0	0	8	8	7	0	23	1	41	0	38	42											
		Count	% Yield	Count	% Yield	Count	% Yield	Count	% Yield	Count	% Yield	Count	% Yield	Count	% Yield	Count	Count	% Yield	Count	% Yield						
Admitted	2013	32	28.6	0	0.0	1	50.0	3	50.0	4	50.0	0	0.0	18	43.9	0	0.0	10	16.7	0	11	25.0	21	30.9		
	2014	36	35.6	0	0.0	1	25.0	2	28.6	3	27.3	5	62.5	0	0.0	15	42.9	1	25.0	10	25.6	2	16	37.2	20	36.4
	2015	25	21.0	0	0.0	1	33.3	0	0.0	1	8.3	2	50.0	0	0.0	12	31.6	1	50.0	9	14.3	0	7	15.6	18	24.3
	2016	24	26.4	0	0.0	1	50.0	1	12.5	2	20.0	2	28.6	0	0.0	9	45.0	1	100.0	10	19.6	0	15	35.7	9	18.4
	2017	10	12.5	0	0.0	0	0.0	1	12.5	1	12.5	1	14.3	0	0.0	5	21.7	0	0.0	3	7.3	0	4	10.5	6	14.3
		Count	% Yield	Count	% Yield	Count	% Yield	Count	% Yield	Count	% Yield	Count	% Yield	Count	% Yield	Count	% Yield	Count	% Yield	Count	Count	% Yield	Count	% Yield		
Enrolled	2013	14	43.8	0	0.0	0	0.0	2	66.7	2	50.0	0	0.0	0	0.0	8	44.4	0	0.0	4	40.0	0	5	45.5	9	42.9
	2014	23	63.9	0	0.0	1	100.0	0	0.0	1	33.3	2	40.0	0	0.0	8	53.3	1	100.0	10	100.0	1	9	56.3	14	70.0
	2015	13	52.0	0	0.0	1	100.0	0	0.0	1	100.0	0	0.0	0	0.0	7	58.3	0	0.0	5	55.6	0	3	42.9	10	55.6
	2016	17	70.8	0	0.0	0	0.0	1	100.0	1	50.0	1	50.0	0	0.0	5	55.6	1	100.0	9	90.0	0	9	60.0	8	88.9
	2017	10	100.0	0	0.0	0	0.0	1	100.0	1	100.0	1	100.0	0	0.0	5	100.0	0	0.0	3	100.0	0	4	100.0	6	100.0

Notes:

- 1) URM stands for Under-Represented Minority and includes American Indian or Alaska Native; Black or African-American; Hispanic / Latino race/ethnicity groups
- 2) Unreported Gender identification is not shown; Male and Female total may not match Total
- 3) In rare situations, the "% Yield" columns may be greater than 100. There are three potential reasons for this:
 - a) Students that received Graduate College approved transfers may not have an admission record for the program that they enrolled into.
 - b) Students with a secondary curriculum enrollment may not have an admission record for that secondary program.
 - c) Students who were newly enrolled in the summer term prior to the fall were added to the fall new enrollment totals.

Applications, Admission, & New Enrollment Yields, cont. by Race/Ethnicity & Gender

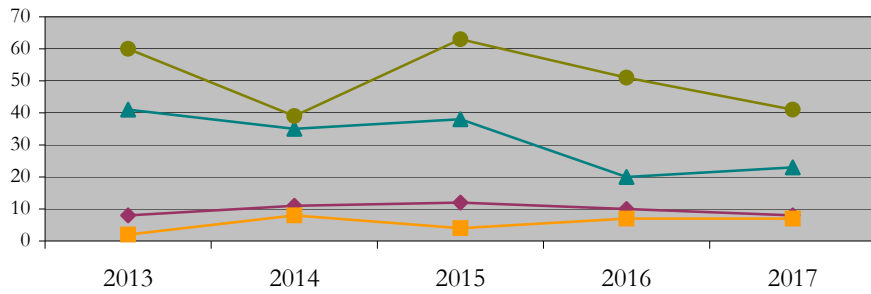
Biological_Sciences_PHD [20FS1072PHD]

Fall 2013 through Fall 2017

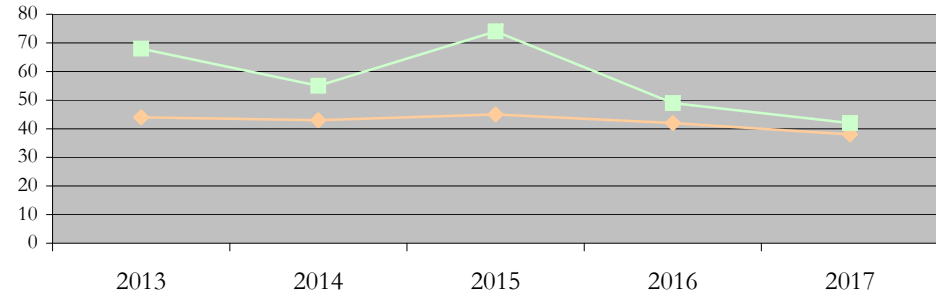
◆ URM Total ■ Asian ▲ White ● International

◆ Male ■ Female

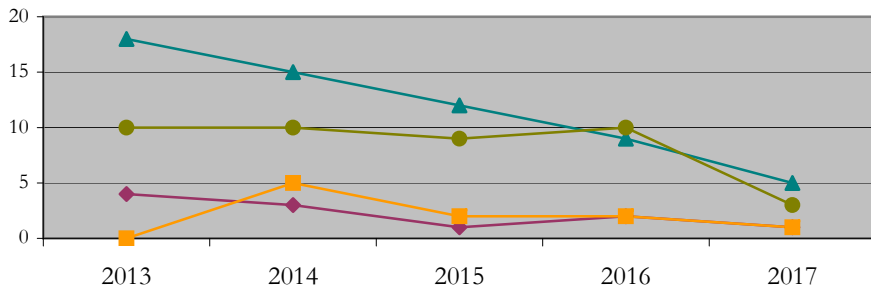
Applications by Race/Ethnicity



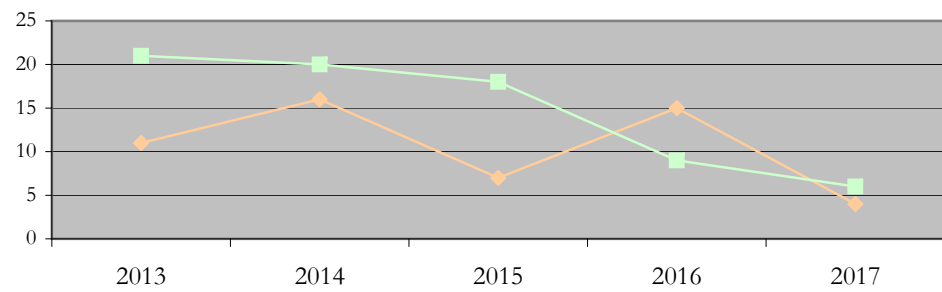
Applications by Gender



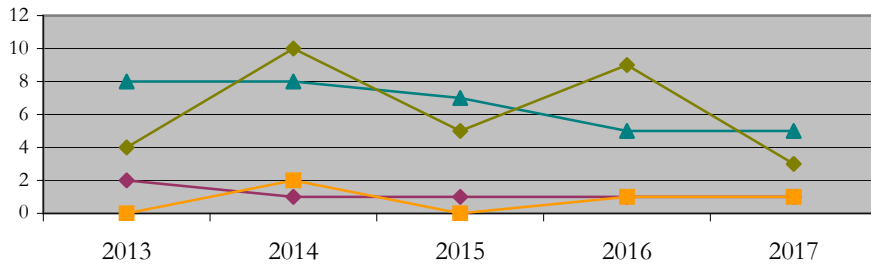
Admissions by Race/Ethnicity



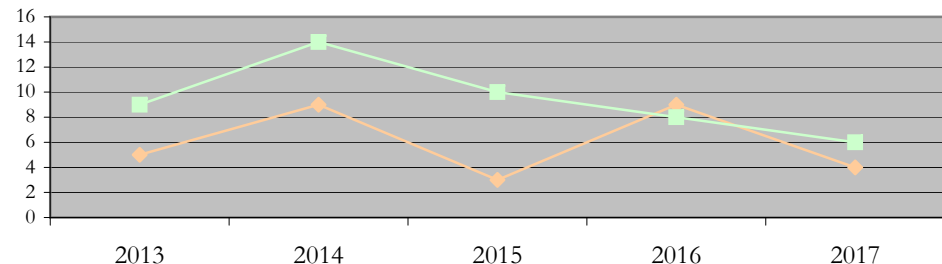
Admissions by Gender



New Enrollments by Race/Ethnicity



New Enrollments by Gender



Notes: 1) URM stands for Under-Represented Minority and includes American Indian or Alaska Native; Black or African-American; Hispanic / Latino race/ethnicity groups
2) Individual URM groups, Native Hawaiian Pacific Islander, Two or More Races, and Other race/ethnicity categories left off these charts due to relatively low numbers

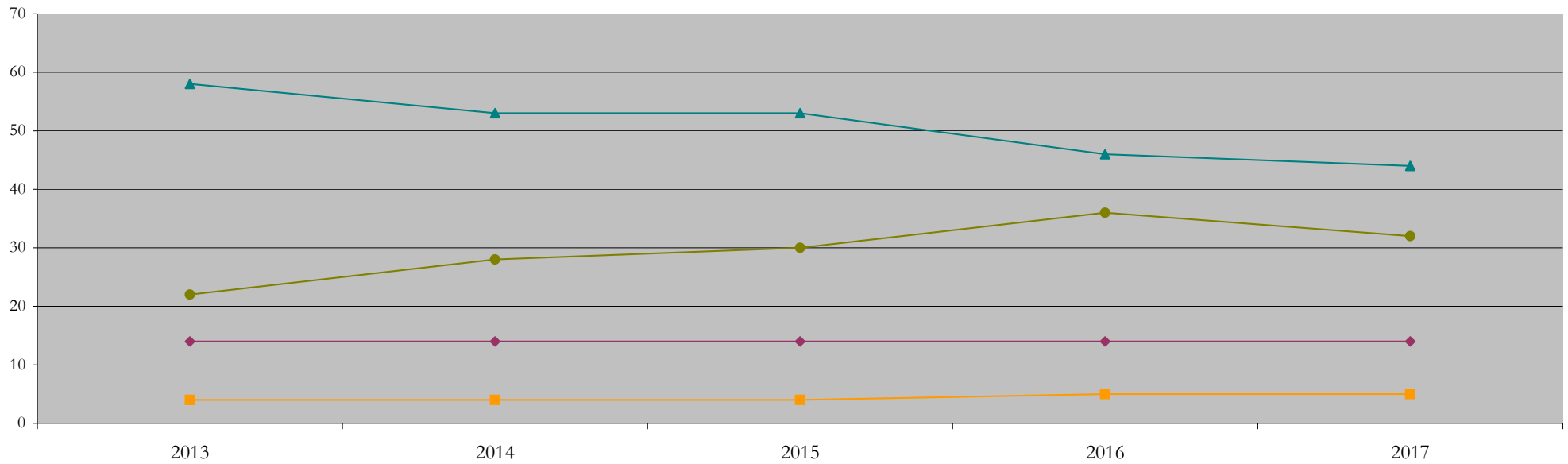
Total Enrollment (includes secondary curriculum)

by Race/Ethnicity

Biological_Sciences_PHD [20FS1072PHD]

Fall 2013 through Fall 2017

Fall Semester Year	Total	Under Represented Minorities (URM)										Asian	Native Hawaiian or Pacific Islander	White		Two or More Races		International		Race/Eth Not Reported
		American Indian or Alaska Native		Black or African American		Hispanic / Latino		URM Total		Count	%			Count	%	Count	%	Count	%	Count
		Count	%	Count	%	Count	%	Count	%	Count	%			Count	%	Count	%	Count	%	Count
2013	99	0	0.0	4	4.0	10	10.1	14	14.1	4	4.0	0	0.0	58	58.6	1	1.0	22	22.2	0
2014	102	0	0.0	5	4.9	9	8.8	14	13.7	4	3.9	0	0.0	53	52.0	2	2.0	28	27.5	1
2015	104	0	0.0	6	5.8	8	7.7	14	13.5	4	3.8	0	0.0	53	51.0	2	1.9	30	28.8	1
2016	104	0	0.0	6	5.8	8	7.7	14	13.5	5	4.8	0	0.0	46	44.2	3	2.9	36	34.6	0
2017	98	0	0.0	5	5.1	9	9.2	14	14.3	5	5.1	0	0.0	44	44.9	2	2.0	32	32.7	1



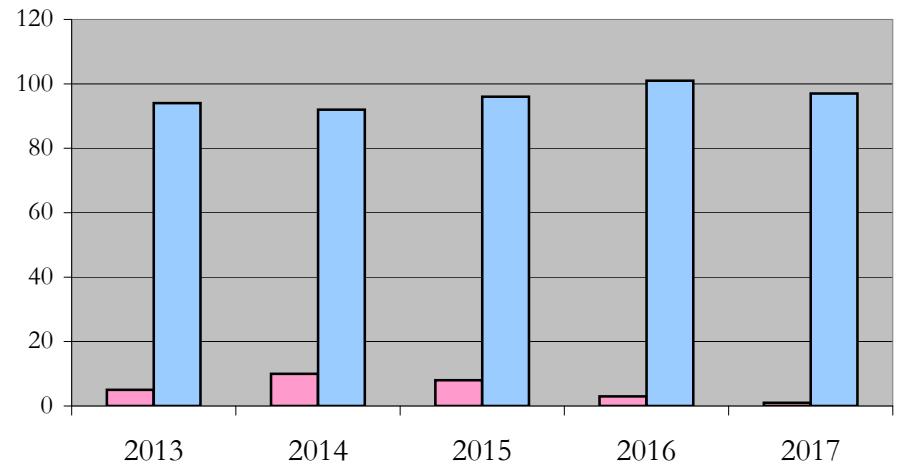
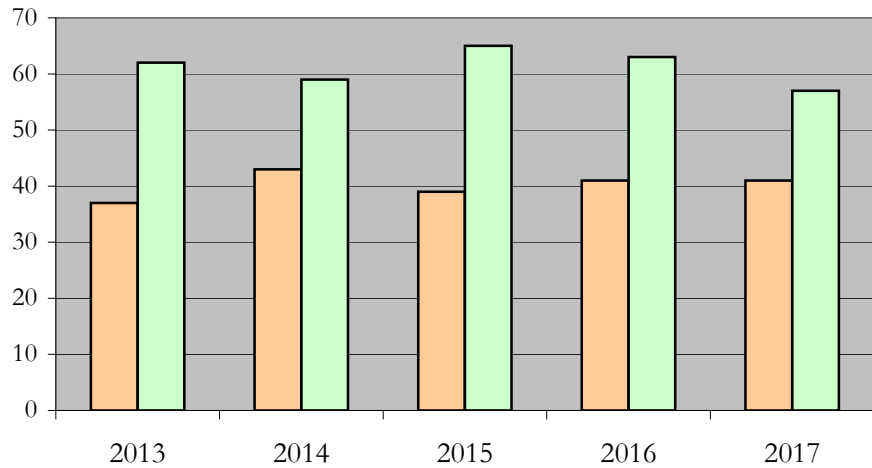
Notes: 1) URM stands for Under-Represented Minority and includes American Indian or Alaska Native; Black or African-American; Hispanic / Latino race/ethnicity groups
 2) Individual URM groups, Native Hawaiian Pacific Islander, Two or More Races, and Other race/ethnicity categories left off this chart due to relatively low numbers

**Total Enrollment (includes secondary curriculum)
by Student Type, Gender, and Enrollment Time**

Biological_Sciences_PHD [20FS1072PHD]

Fall 2013 through Fall 2017

Fall Semester Year	Total	New		Continuing		Male		Female		Gender Not Reported	Part-time		Full-time	
		Count	%	Count	%	Count	%	Count	%	Count	Count	%	Count	%
2013	99	14	14.1	85	85.9	37	37.4	62	62.6	0	5	5.1	94	94.9
2014	102	23	22.5	79	77.5	43	42.2	59	57.8	0	10	9.8	92	90.2
2015	104	13	12.5	91	87.5	39	37.5	65	62.5	0	8	7.7	96	92.3
2016	104	17	16.3	87	83.7	41	39.4	63	60.6	0	3	2.9	101	97.1
2017	98	10	10.2	88	89.8	41	41.8	57	58.2	0	1	1.0	97	99.0



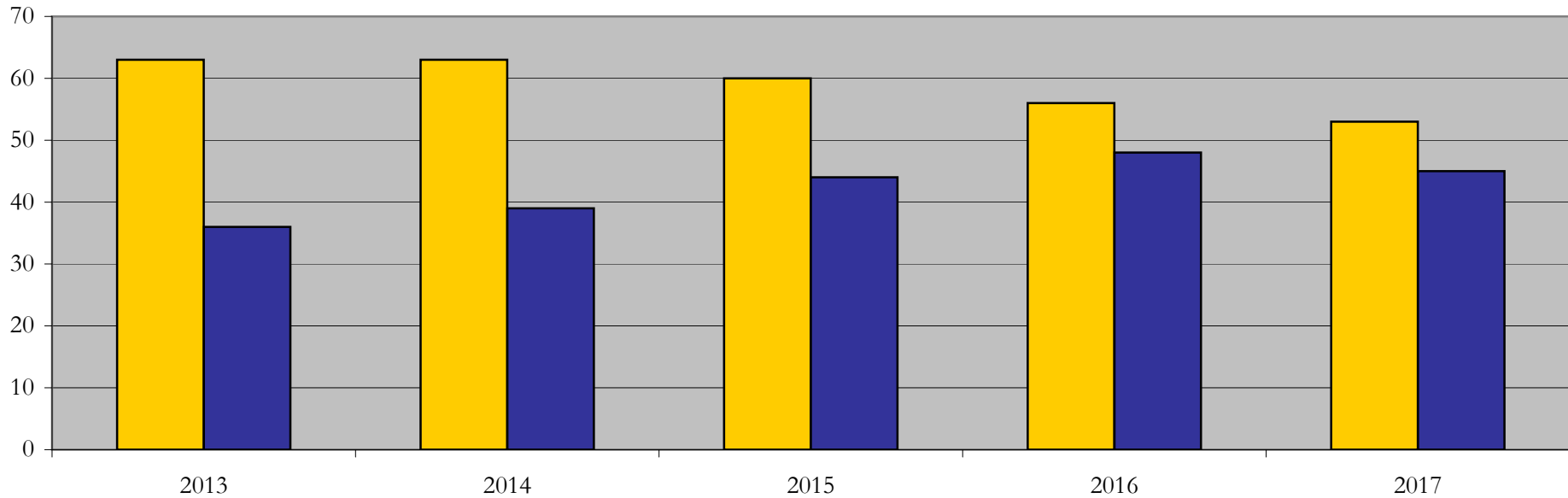
Enrollment & Degrees Conferred

by Primary/Secondary, Average Age, State Residency

Biological_Sciences_PHD [20FS1072PHD]

Fall 2013 through Fall 2017

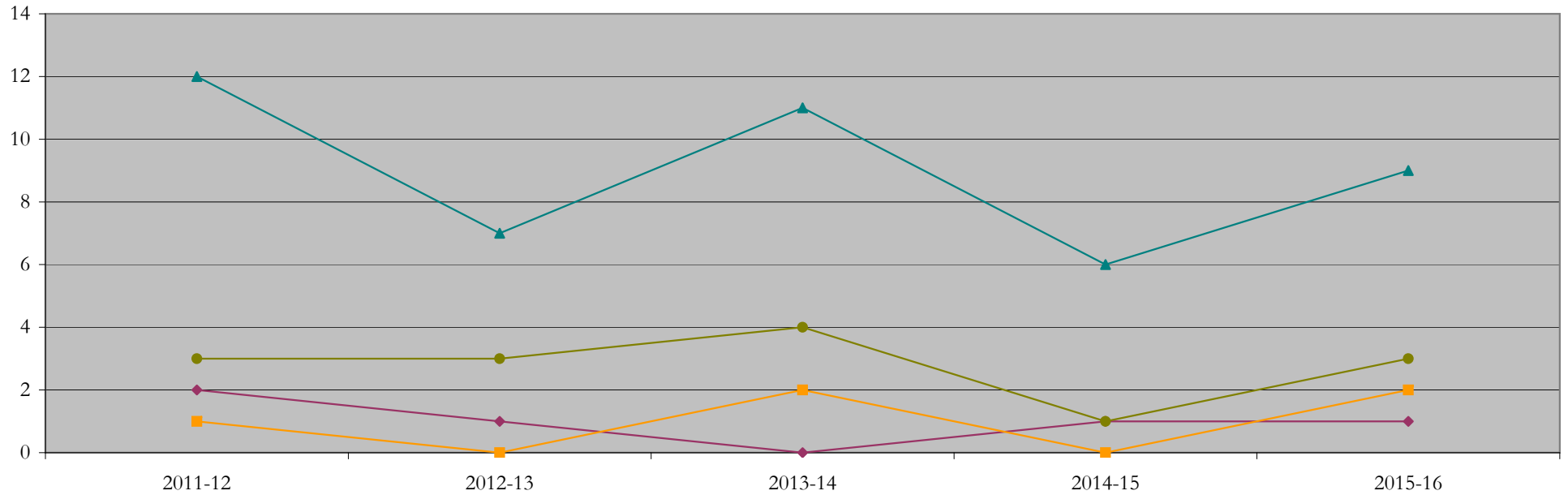
Fall Semester Year	Enrollment			Average Age			State Residency of Total Enrollment					
	Total	Primary	Secondary	Fall New Enrollment	Fall Continuing Enrollment	Academic Year Graduating Class	Residents			Non-Residents		
							Total Enrollment	New Enrollment	Continuing Enrollment	Total Enrollment	New Enrollment	Continuing Enrollment
2013	99	99	0	27	30	32	63	9	54	36	5	31
2014	102	102	0	26	30	31	63	12	51	39	11	28
2015	104	104	0	27	30	31	60	6	54	44	7	37
2016	104	104	0	26	30	31	56	8	48	48	9	39
2017	98	98	0	26	30	32	53	3	50	45	7	38



Degrees Conferred by Race/Ethnicity

Biological_Sciences_PHD [20FS1072PHD]
AY2011-12 through 2015-16

Academic Year	Total	Under Represented Minorities (URM)								Asian		Native Hawaiian or Pacific		White		Two or More Races		International		Not Reported
		American Indian or Alaska Native		Black or African American		Hispanic / Latino		URM Total		Count	%	Count	%	Count	%	Count	%	Count	%	
		Count	%	Count	%	Count	%	Count	%											
2012 - 2013	18	0	0.0	1	5.6	1	5.6	2	11.1	1	5.6	0	0.0	12	66.7	0	0.0	3	16.7	0
2013 - 2014	11	0	0.0	0	0.0	1	9.1	1	9.1	0	0.0	0	0.0	7	63.6	0	0.0	3	27.3	0
2014 - 2015	17	0	0.0	0	0.0	0	0.0	0	0.0	2	11.8	0	0.0	11	64.7	0	0.0	4	23.5	0
2015 - 2016	8	0	0.0	0	0.0	1	12.5	1	12.5	0	0.0	0	0.0	6	75.0	0	0.0	1	12.5	0
2016 - 2017	17	0	0.0	1	5.9	0	0.0	1	5.9	2	11.8	0	0.0	9	52.9	2	11.8	3	17.6	0



Notes: 1) URM stands for Under-Represented Minority and includes American Indian or Alaska Native; Black or African-American; Hispanic / Latino race/ethnicity groups
2) Individual URM groups, Native Hawaiian Pacific Islander, Two or More Races, and Other race/ethnicity categories left off this chart due to relatively low numbers

Degrees Conferred

by Gender

Biological_Sciences_PHD [20FS1072PHD]

AY2011-12 through 2015-16

Academic Year	Total	Male		Female		Not Reported
		Count	%	Count	%	
2012 - 2013	18	10	55.6	8	44.4	0
2013 - 2014	11	4	36.4	7	63.6	0
2014 - 2015	17	4	23.5	13	76.5	0
2015 - 2016	8	2	25.0	6	75.0	0
2016 - 2017	17	7	41.2	10	58.8	0

