

Matriculation

Diversity Pipeline

Anthropology_PHD [20FS0340PHD]

Fall 2013 through Fall 2017

Fall Semester Year	Applied					Admitted					Non-URM Admitted to Applied Yield %	URM Admitted to Applied Yield %	New Enrollment					Non-URM Enrolled to Admitted Yield %	URM Enrolled to Admitted Yield %	Total Enrollment				
	Grand Total	Non-URM Total		URM Total		Grand Total	Non-URM Total		URM Total				Grand Total	Non-URM Total		URM Total				Grand Total	Non-URM Total		URM Total	
		Count	%	Count	%		Count	%	Count	%				Count	%	Count	%				Count	%	Count	%
	Count	%	Count	%	Count	%	Count	%	Count	%			Count	%	Count	%	Count			%	Count	%	Count	%
2013	47	45	95.7%	2	4.3%	2	2	100.0%	0	0.0%	4.4%	0.0%	1	1	100.0%	0	0.0%	50.0%	0.0%	35	30	85.7%	5	14.3%
2014	31	24	77.4%	7	22.6%	7	5	71.4%	2	28.6%	20.8%	28.6%	2	2	100.0%	0	0.0%	40.0%	0.0%	43	38	88.4%	5	11.6%
2015	22	20	90.9%	2	9.1%	7	6	85.7%	1	14.3%	30.0%	50.0%	4	3	75.0%	1	25.0%	50.0%	100.0%	41	35	85.4%	6	14.6%
2016	28	23	82.1%	5	17.9%	4	3	75.0%	1	25.0%	13.0%	20.0%	2	1	50.0%	1	50.0%	33.3%	100.0%	38	31	81.6%	7	18.4%
2017	25	23	92.0%	2	8.0%	6	5	83.3%	1	16.7%	21.7%	50.0%	5	4	80.0%	1	20.0%	80.0%	100.0%	42	35	83.3%	7	16.7%
Average	31	27	88.2%	4	11.8%	5	4	80.8%	1	19.2%	15.6%	27.8%	3	2	78.6%	1	21.4%	52.4%	60.0%	40	34	84.9%	6	15.1%

Note: URM stands for Under-Represented Minority and includes American Indian or Alaska Native; Black or African-American; Hispanic / Latino race/ethnicity groups

Applications, Admission, & New Enrollment Yields

by Race/Ethnicity & Gender

Anthropology_PHD [20FS0340PHD]

Fall 2013 through Fall 2017

	Fall Semester Year	Total		Under Represented Minorities (URM)								Asian	Native Hawaiian or Pacific Islander	White	Two or More Races	International	Race/Eth Not Reported	Male	Female								
				American Indian or Alaska Native		Black or African American		Hispanic / Latino		URM Total																	
Applied	2013	47		0	0	2		2		3	0	27	0	12	3	18	29										
	2014	31		0	1	6		7		1	0	17	0	6	0	9	22										
	2015	22		0	0	2		2		2	0	11	0	7	0	5	17										
	2016	28		1	2	2		5		1	0	11	3	5	3	8	20										
	2017	25		1	0	1		2		2	0	11	2	8	0	8	17										
		Count	% Yield	Count	% Yield	Count	% Yield	Count	% Yield	Count	% Yield	Count	% Yield	Count	% Yield	Count	% Yield	Count	% Yield	Count	% Yield						
Admitted	2013	2	4.3	0	0.0	0	0.0	0	0.0	0	0.0	0	0.0	2	7.4	0	0.0	0	0.0	0	0.0	2	11.1	0	0.0		
	2014	7	22.6	0	0.0	0	0.0	2	33.3	2	28.6	0	0.0	0	0.0	3	17.6	0	0.0	2	33.3	0	0.0	2	22.2	5	22.7
	2015	7	31.8	0	0.0	0	0.0	1	50.0	1	50.0	0	0.0	0	0.0	3	27.3	0	0.0	3	42.9	0	0.0	7	41.2		
	2016	4	14.3	0	0.0	0	0.0	1	50.0	1	20.0	1	100.0	0	0.0	1	9.1	0	0.0	1	20.0	0	0.0	2	25.0	2	10.0
	2017	6	24.0	1	100.0	0	0.0	0	0.0	1	50.0	0	0.0	0	0.0	2	18.2	0	0.0	3	37.5	0	0.0	2	25.0	4	23.5
		Count	% Yield	Count	% Yield	Count	% Yield	Count	% Yield	Count	% Yield	Count	% Yield	Count	% Yield	Count	% Yield	Count	% Yield	Count	% Yield	Count	% Yield	Count	% Yield	Count	% Yield
Enrolled	2013	1	50.0	0	0.0	0	0.0	0	0.0	0	0.0	0	0.0	1	50.0	0	0.0	0	0.0	0	0.0	1	50.0	0	0.0		
	2014	2	28.6	0	0.0	0	0.0	0	0.0	0	0.0	0	0.0	0	0.0	0	0.0	2	100.0	0	0.0	0	0.0	2	40.0		
	2015	4	57.1	0	0.0	0	0.0	1	100.0	1	100.0	0	0.0	0	0.0	1	33.3	0	0.0	2	66.7	0	0.0	4	57.1		
	2016	2	50.0	0	0.0	0	0.0	1	100.0	1	100.0	0	0.0	0	0.0	0	0.0	0	0.0	1	100.0	0	0.0	1	50.0		
	2017	5	83.3	1	100.0	0	0.0	0	0.0	1	100.0	0	0.0	0	0.0	2	100.0	0	0.0	2	66.7	0	0.0	1	50.0	4	100.0

Notes:

- 1) URM stands for Under-Represented Minority and includes American Indian or Alaska Native; Black or African-American; Hispanic / Latino race/ethnicity groups
- 2) Unreported Gender identification is not shown; Male and Female total may not match Total
- 3) In rare situations, the "% Yield" columns may be greater than 100. There are three potential reasons for this:
 - a) Students that received Graduate College approved transfers may not have an admission record for the program that they enrolled into.
 - b) Students with a secondary curriculum enrollment may not have an admission record for that secondary program.
 - c) Students who were newly enrolled in the summer term prior to the fall were added to the fall new enrollment totals.

Applications, Admission, & New Enrollment Yields, cont. by Race/Ethnicity & Gender

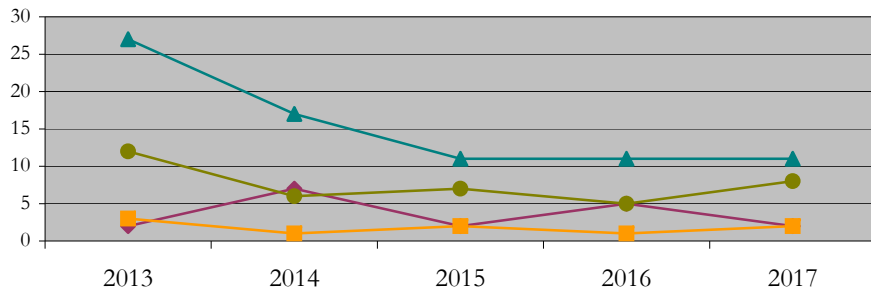
Anthropology_PHD [20FS0340PHD]

Fall 2013 through Fall 2017

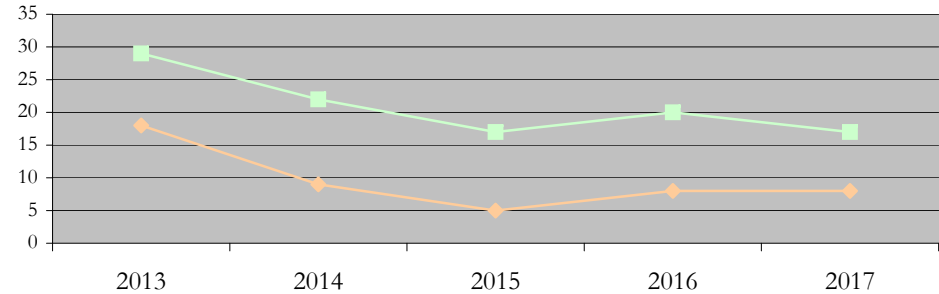
URM Total Asian White International

Male Female

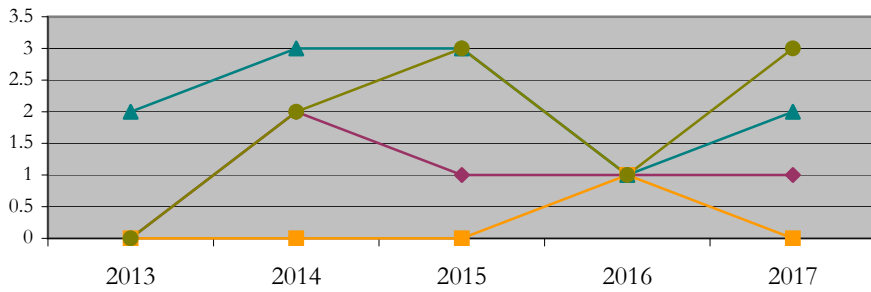
Applications by Race/Ethnicity



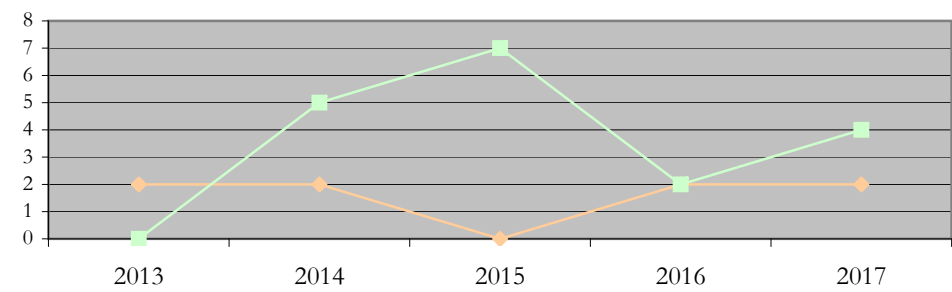
Applications by Gender



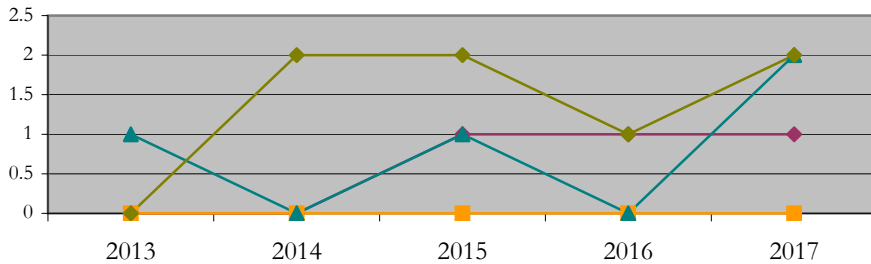
Admissions by Race/Ethnicity



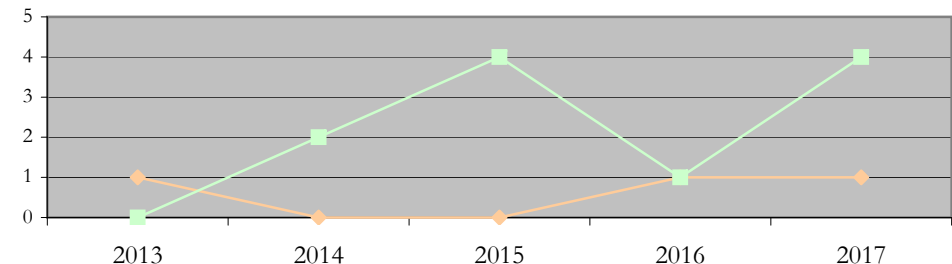
Admissions by Gender



New Enrollments by Race/Ethnicity



New Enrollments by Gender



Notes: 1) URM stands for Under-Represented Minority and includes American Indian or Alaska Native; Black or African-American; Hispanic / Latino race/ethnicity groups
2) Individual URM groups, Native Hawaiian Pacific Islander, Two or More Races, and Other race/ethnicity categories left off these charts due to relatively low numbers

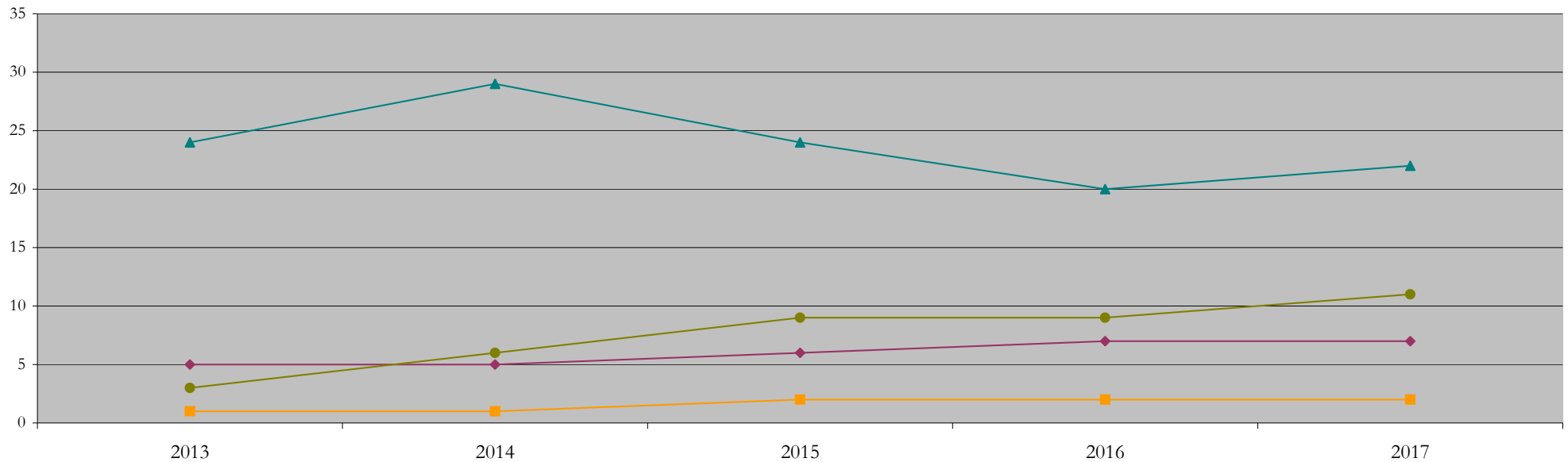
Total Enrollment (includes secondary curriculum)

by Race/Ethnicity

Anthropology_PHD [20FS0340PHD]

Fall 2013 through Fall 2017

Fall Semester Year	Total	Under Represented Minorities (URM)																		
		American Indian or Alaska Native		Black or African American		Hispanic / Latino		URM Total		Asian		Native Hawaiian or Pacific Islander		White		Two or More Races		International		Race/Eth Not Reported
		Count	%	Count	%	Count	%	Count	%	Count	%	Count	%	Count	%	Count	%	Count	%	Count
2013	35	0	0.0	3	8.6	2	5.7	5	14.3	1	2.9	0	0.0	24	68.6	1	2.9	3	8.6	1
2014	43	0	0.0	2	4.7	3	7.0	5	11.6	1	2.3	0	0.0	29	67.4	1	2.3	6	14.0	1
2015	41	0	0.0	2	4.9	4	9.8	6	14.6	2	4.9	0	0.0	24	58.5	0	0.0	9	22.0	0
2016	38	0	0.0	2	5.3	5	13.2	7	18.4	2	5.3	0	0.0	20	52.6	0	0.0	9	23.7	0
2017	42	0	0.0	2	4.8	5	11.9	7	16.7	2	4.8	0	0.0	22	52.4	0	0.0	11	26.2	0



Notes: 1) URM stands for Under-Represented Minority and includes American Indian or Alaska Native; Black or African-American; Hispanic / Latino race/ethnicity groups
 2) Individual URM groups, Native Hawaiian Pacific Islander, Two or More Races, and Other race/ethnicity categories left off this chart due to relatively low numbers

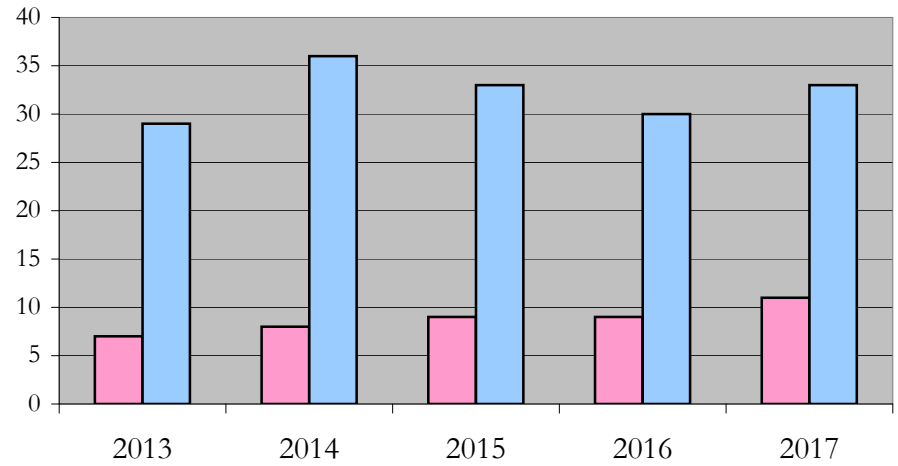
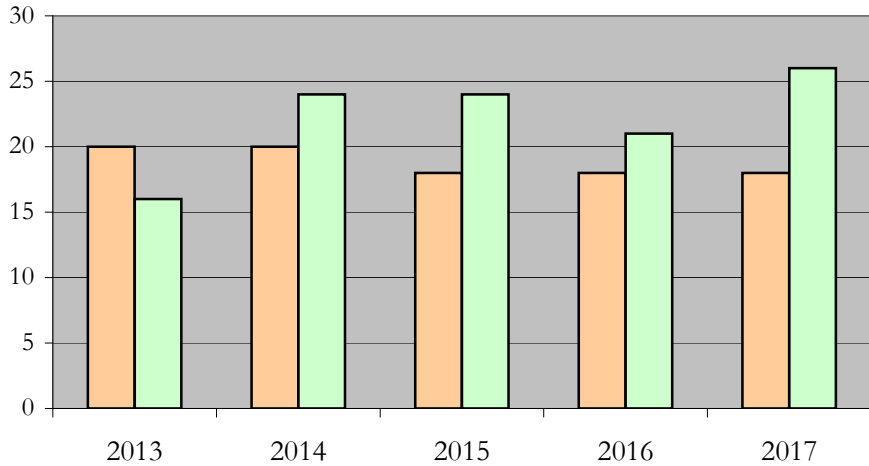
Total Enrollment (includes secondary curriculum)

by Student Type, Gender, and Enrollment Time

Anthropology_PHD [20FS0340PHD]

Fall 2013 through Fall 2017

Fall Semester Year	Total	New		Continuing		Male		Female		Gender Not Reported	Part-time		Full-time	
		Count	%	Count	%	Count	%	Count	%		Count	%	Count	%
2013	35	1	2.9	34	97.1	20	57.1	16	45.7	-1	7	20.0	29	82.9
2014	43	2	4.7	41	95.3	20	46.5	24	55.8	-1	8	18.6	36	83.7
2015	41	4	9.8	37	90.2	18	43.9	24	58.5	-1	9	22.0	33	80.5
2016	38	2	5.3	36	94.7	18	47.4	21	55.3	-1	9	23.7	30	78.9
2017	42	5	11.9	37	88.1	18	42.9	26	61.9	-2	11	26.2	33	78.6



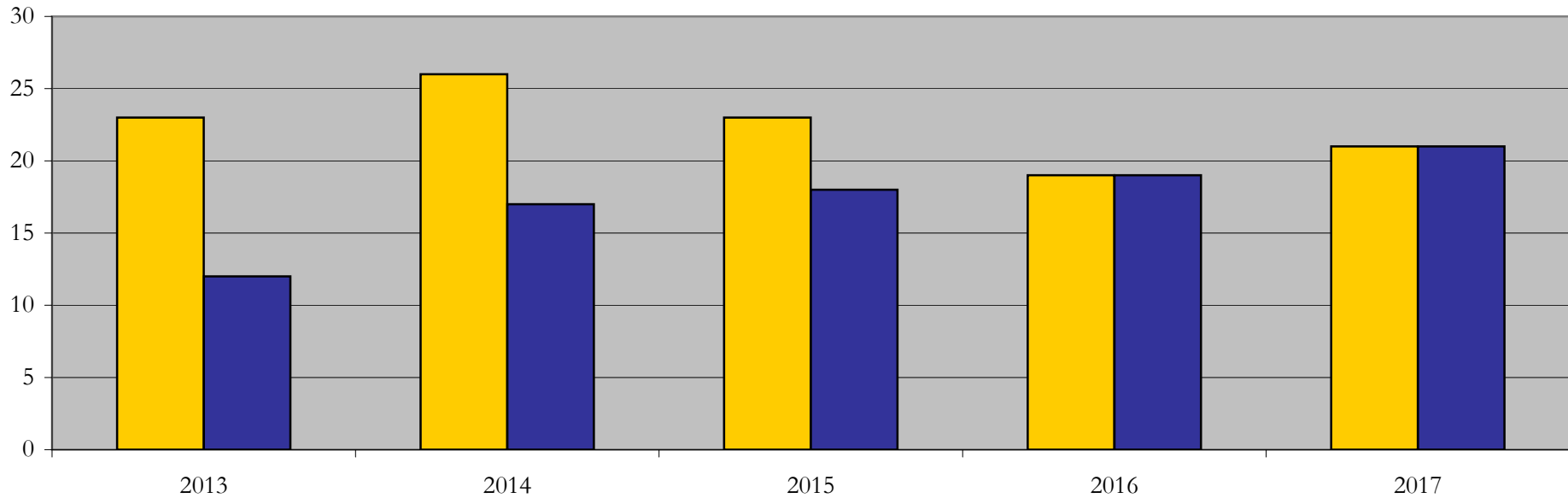
Enrollment & Degrees Conferred

by Primary/Secondary, Average Age, State Residency

Anthropology_PHD [20FS0340PHD]

Fall 2013 through Fall 2017

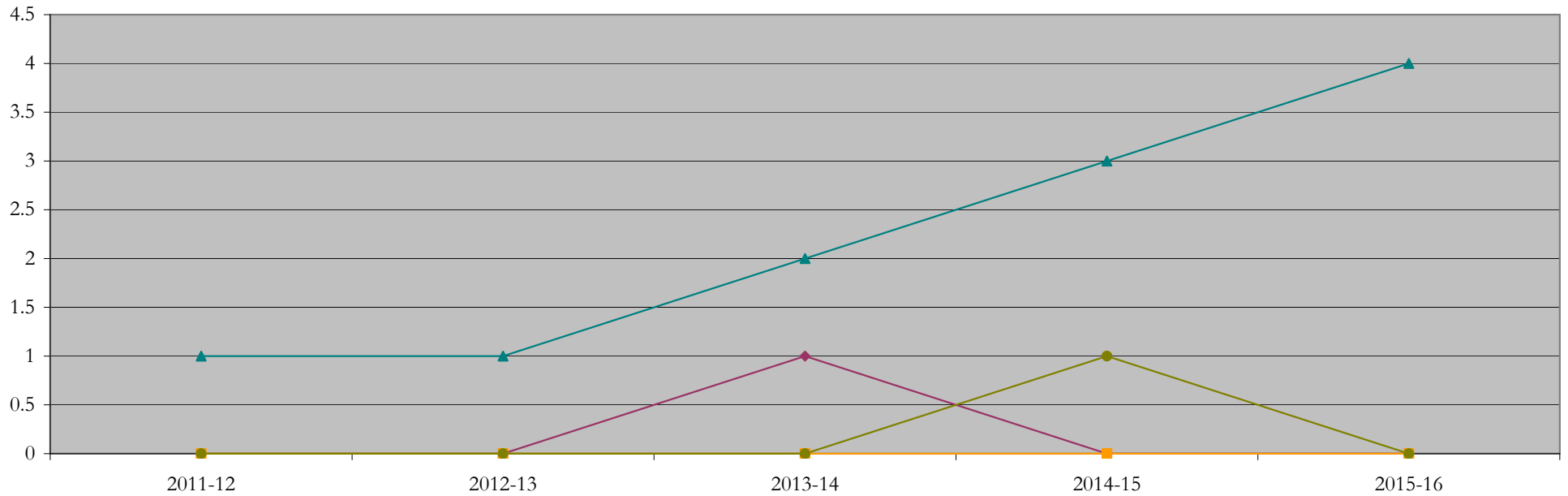
Fall Semester Year	Enrollment			Average Age			State Residency of Total Enrollment					
	Total	Primary	Secondary	Fall New Enrollment	Fall Continuing Enrollment	Academic Year Graduating Class	Residents			Non-Residents		
							Total Enrollment	New Enrollment	Continuing Enrollment	Total Enrollment	New Enrollment	Continuing Enrollment
2013	35	35	0	29	34	44	23	1	22	12	0	12
2014	43	43	0	27	34	35	26	0	26	17	2	15
2015	41	41	0	26	33	34	23	2	21	18	2	16
2016	38	38	0	24	33	39	19	1	18	19	1	18
2017	42	42	0	25	34	34	21	2	19	21	3	18



Degrees Conferred by Race/Ethnicity

Anthropology_PHD [20FS0340PHD]
AY2011-12 through 2015-16

Academic Year	Total	Under Represented Minorities (URM)								Asian		Native Hawaiian or Pacific		White		Two or More Races		International		Not Reported
		American Indian or Alaska Native		Black or African American		Hispanic / Latino		URM Total		Count	%	Count	%	Count	%	Count	%	Count	%	
		Count	%	Count	%	Count	%	Count	%											
2012 - 2013	1	0	0.0	0	0.0	0	0.0	0	0.0	0	0.0	0	0.0	1	100.0	0	0.0	0	0.0	0
2013 - 2014	1	0	0.0	0	0.0	0	0.0	0	0.0	0	0.0	0	0.0	1	100.0	0	0.0	0	0.0	0
2014 - 2015	5	0	0.0	1	20.0	0	0.0	1	20.0	0	0.0	0	0.0	2	40.0	1	20.0	0	0.0	1
2015 - 2016	4	0	0.0	0	0.0	0	0.0	0	0.0	0	0.0	0	0.0	3	75.0	0	0.0	1	25.0	0
2016 - 2017	4	0	0.0	0	0.0	0	0.0	0	0.0	0	0.0	0	0.0	4	100.0	0	0.0	0	0.0	0



Notes: 1) URM stands for Under-Represented Minority and includes American Indian or Alaska Native; Black or African-American; Hispanic / Latino race/ethnicity groups
2) Individual URM groups, Native Hawaiian Pacific Islander, Two or More Races, and Other race/ethnicity categories left off this chart due to relatively low numbers

Degrees Conferred

by Gender

Anthropology_PHD [20FS0340PHD]

AY2011-12 through 2015-16

Academic Year	Total	Male		Female		Not Reported
		Count	%	Count	%	
2012 - 2013	1	1	100.0	0	0.0	0
2013 - 2014	1	1	100.0	0	0.0	0
2014 - 2015	5	4	80.0	1	20.0	0
2015 - 2016	4	1	25.0	3	75.0	0
2016 - 2017	4	2	50.0	2	50.0	0

