

Matriculation

Diversity Pipeline

Political Science

Fall 2013 - Fall 2017

| | Fall Semester Year | Applied | | | | | Admitted | | | | | Non-URM Admitted to Applied Yield % | URM Admitted to Applied Yield % | New Enrollment | | | | | Non-URM Enrolled to Admitted Yield % | URM Enrolled to Admitted Yield % | Total Enrollment | | | | |
|---------------------------------|--------------------|-------------|---------------|--------------|-----------|--------------|-------------|---------------|--------------|-----------|--------------|-------------------------------------|---------------------------------|----------------|---------------|---------------|-----------|--------------|--------------------------------------|----------------------------------|------------------|---------------|--------------|-----------|--------------|
| | | Grand Total | Non-URM Total | | URM Total | | Grand Total | Non-URM Total | | URM Total | | | | Grand Total | Non-URM Total | | URM Total | | | | Grand Total | Non-URM Total | | URM Total | |
| | | | Count | % | Count | % | | Count | % | Count | % | | | | Count | % | Count | % | | | | Count | % | Count | % |
| All | 2013 | 61 | 57 | 93.4% | 4 | 6.6% | 19 | 19 | 100.0% | 0 | 0.0% | 33.3% | 0.0% | 9 | 9 | 100.0% | 0 | 0.0% | 47.4% | 0.0% | 51 | 46 | 90.2% | 5 | 9.8% |
| | 2014 | 63 | 52 | 82.5% | 11 | 17.5% | 23 | 19 | 82.6% | 4 | 17.4% | 36.5% | 36.4% | 8 | 6 | 75.0% | 2 | 25.0% | 31.6% | 50.0% | 52 | 45 | 86.5% | 7 | 13.5% |
| | 2015 | 65 | 55 | 84.6% | 10 | 15.4% | 15 | 14 | 93.3% | 1 | 6.7% | 25.5% | 10.0% | 8 | 8 | 100.0% | 0 | 0.0% | 57.1% | 0.0% | 45 | 38 | 84.4% | 7 | 15.6% |
| | 2016 | 51 | 44 | 86.3% | 7 | 13.7% | 23 | 22 | 95.7% | 1 | 4.3% | 50.0% | 14.3% | 8 | 7 | 87.5% | 1 | 12.5% | 31.8% | 100.0% | 47 | 39 | 83.0% | 8 | 17.0% |
| | 2017 | 63 | 57 | 90.5% | 6 | 9.5% | 13 | 12 | 92.3% | 1 | 7.7% | 21.1% | 16.7% | 5 | 5 | 100.0% | 0 | 0.0% | 41.7% | 0.0% | 44 | 38 | 86.4% | 6 | 13.6% |
| | Average | 61 | 53 | 87.5% | 8 | 12.5% | 19 | 17 | 92.5% | 1 | 7.5% | 32.5% | 18.4% | 8 | 7 | 92.1% | 1 | 7.9% | 40.7% | 42.9% | 48 | 41 | 86.2% | 7 | 13.8% |
| Masters & IBHE Certificate | 2013 | 23 | 22 | 95.7% | 1 | 4.3% | 11 | 11 | 100.0% | 0 | 0.0% | 50.0% | 0.0% | 6 | 6 | 100.0% | 0 | 0.0% | 54.5% | 0.0% | 9 | 9 | 100.0% | 0 | 0.0% |
| | 2014 | 16 | 12 | 75.0% | 4 | 25.0% | 10 | 8 | 80.0% | 2 | 20.0% | 66.7% | 50.0% | 6 | 4 | 66.7% | 2 | 33.3% | 50.0% | 100.0% | 13 | 11 | 84.6% | 2 | 15.4% |
| | 2015 | 20 | 18 | 90.0% | 2 | 10.0% | 4 | 4 | 100.0% | 0 | 0.0% | 22.2% | 0.0% | 1 | 1 | 100.0% | 0 | 0.0% | 25.0% | 0.0% | 6 | 4 | 66.7% | 2 | 33.3% |
| | 2016 | 23 | 17 | 73.9% | 6 | 26.1% | 10 | 9 | 90.0% | 1 | 10.0% | 52.9% | 16.7% | 5 | 4 | 80.0% | 1 | 20.0% | 44.4% | 100.0% | 7 | 6 | 85.7% | 1 | 14.3% |
| | 2017 | 17 | 13 | 76.5% | 4 | 23.5% | 2 | 1 | 50.0% | 1 | 50.0% | 7.7% | 25.0% | 1 | 1 | 100.0% | 0 | 0.0% | 100.0% | 0.0% | 6 | 5 | 83.3% | 1 | 16.7% |
| | Average | 20 | 16 | 82.8% | 3 | 17.2% | 7 | 7 | 89.2% | 1 | 10.8% | 40.2% | 23.5% | 4 | 3 | 84.2% | 1 | 15.8% | 48.5% | 75.0% | 8 | 7 | 85.4% | 1 | 14.6% |
| Doctorate | 2013 | 38 | 35 | 92.1% | 3 | 7.9% | 8 | 8 | 100.0% | 0 | 0.0% | 22.9% | 0.0% | 3 | 3 | 100.0% | 0 | 0.0% | 37.5% | 0.0% | 42 | 37 | 88.1% | 5 | 11.9% |
| | 2014 | 47 | 40 | 85.1% | 7 | 14.9% | 13 | 11 | 84.6% | 2 | 15.4% | 27.5% | 28.6% | 2 | 2 | 100.0% | 0 | 0.0% | 18.2% | 0.0% | 39 | 34 | 87.2% | 5 | 12.8% |
| | 2015 | 45 | 37 | 82.2% | 8 | 17.8% | 11 | 10 | 90.9% | 1 | 9.1% | 27.0% | 12.5% | 7 | 7 | 100.0% | 0 | 0.0% | 70.0% | 0.0% | 39 | 34 | 87.2% | 5 | 12.8% |
| | 2016 | 28 | 27 | 96.4% | 1 | 3.6% | 13 | 13 | 100.0% | 0 | 0.0% | 48.1% | 0.0% | 3 | 3 | 100.0% | 0 | 0.0% | 23.1% | 0.0% | 40 | 33 | 82.5% | 7 | 17.5% |
| | 2017 | 46 | 44 | 95.7% | 2 | 4.3% | 11 | 11 | 100.0% | 0 | 0.0% | 25.0% | 0.0% | 4 | 4 | 100.0% | 0 | 0.0% | 36.4% | 0.0% | 38 | 33 | 86.8% | 5 | 13.2% |
| | Average | 41 | 37 | 89.7% | 4 | 10.3% | 11 | 11 | 94.6% | 1 | 5.4% | 29.0% | 14.3% | 4 | 4 | 100.0% | 0 | 0.0% | 35.8% | 0.0% | 40 | 34 | 86.4% | 5 | 13.6% |
| Non-Degree & Campus Certificate | 2013 | 0 | 0 | 0.0% | 0 | 0.0% | 0 | 0 | 0.0% | 0 | 0.0% | 0.0% | 0.0% | 0 | 0 | 0.0% | 0 | 0.0% | 0.0% | 0.0% | 0 | 0 | 0.0% | 0 | 0.0% |
| | 2014 | 0 | 0 | 0.0% | 0 | 0.0% | 0 | 0 | 0.0% | 0 | 0.0% | 0.0% | 0.0% | 0 | 0 | 0.0% | 0 | 0.0% | 0.0% | 0.0% | 0 | 0 | 0.0% | 0 | 0.0% |
| | 2015 | 0 | 0 | 0.0% | 0 | 0.0% | 0 | 0 | 0.0% | 0 | 0.0% | 0.0% | 0.0% | 0 | 0 | 0.0% | 0 | 0.0% | 0.0% | 0.0% | 0 | 0 | 0.0% | 0 | 0.0% |
| | 2016 | 0 | 0 | 0.0% | 0 | 0.0% | 0 | 0 | 0.0% | 0 | 0.0% | 0.0% | 0.0% | 0 | 0 | 0.0% | 0 | 0.0% | 0.0% | 0.0% | 0 | 0 | 0.0% | 0 | 0.0% |
| | 2017 | 0 | 0 | 0.0% | 0 | 0.0% | 0 | 0 | 0.0% | 0 | 0.0% | 0.0% | 0.0% | 0 | 0 | 0.0% | 0 | 0.0% | 0.0% | 0.0% | 0 | 0 | 0.0% | 0 | 0.0% |
| | Average | 0 | 0 | 0.0% | 0 | 0.0% | 0 | 0 | 0.0% | 0 | 0.0% | 0.0% | 0.0% | 0 | 0 | 0.0% | 0 | 0.0% | 0.0% | 0.0% | 0 | 0 | 0.0% | 0 | 0.0% |

Note: URM stands for Under-Represented Minority and includes American Indian or Alaska Native; Black or African-American; Hispanic / Latino race/ethnicity groups

**Applications - Total
by Race/Ethnicity**

Political Science

Fall 2013 - Fall 2017

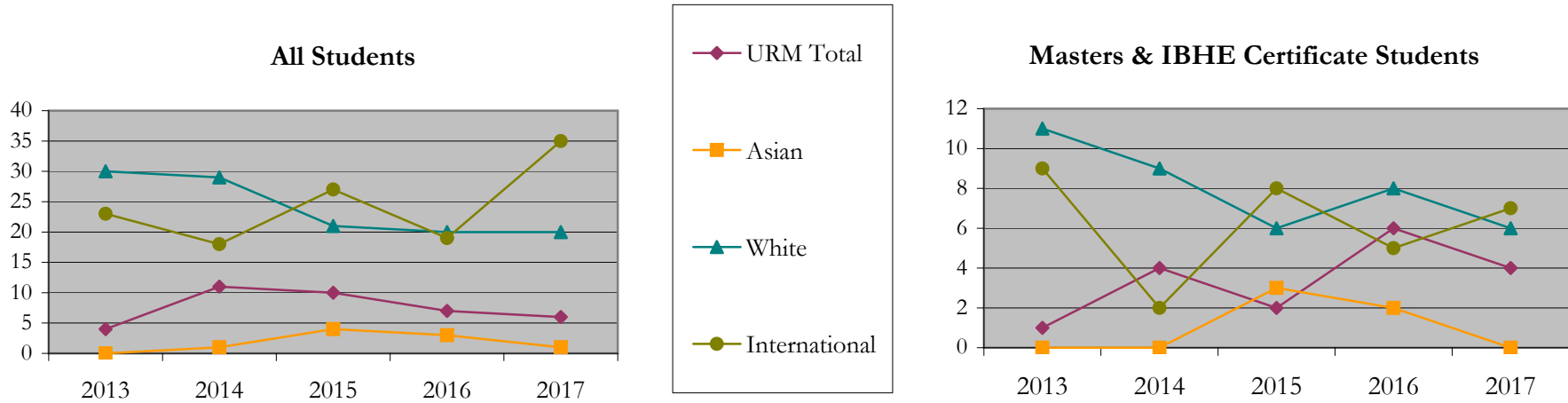
| | | Total | Under Represented Minorities (URM) | | | | | | | | | | | | | | | | Not Reported | | |
|---------------------------------|------|-------|------------------------------------|-----|---------------------------|------|-------------------|------|-----------|------|-------|------|-------------------------------------|-----|-------|------|-------------------|-----|--------------|---------------|---|
| | | | American Indian or Alaska Native | | Black or African American | | Hispanic / Latino | | URM Total | | Asian | | Native Hawaiian or Pacific Islander | | White | | Two or More Races | | | International | |
| | | | Count | % | Count | % | Count | % | Count | % | Count | % | Count | % | Count | % | Count | % | | Count | % |
| All | 2013 | 61 | 0 | 0.0 | 2 | 3.3 | 2 | 3.3 | 4 | 6.6 | 0 | 0.0 | 0 | 0.0 | 30 | 49.2 | 1 | 1.6 | 23 | 37.7 | 3 |
| | 2014 | 63 | 0 | 0.0 | 4 | 6.3 | 7 | 11.1 | 11 | 17.5 | 1 | 1.6 | 0 | 0.0 | 29 | 46.0 | 0 | 0.0 | 18 | 28.6 | 4 |
| | 2015 | 65 | 0 | 0.0 | 6 | 9.2 | 4 | 6.2 | 10 | 15.4 | 4 | 6.2 | 0 | 0.0 | 21 | 32.3 | 1 | 1.5 | 27 | 41.5 | 2 |
| | 2016 | 51 | 0 | 0.0 | 6 | 11.8 | 1 | 2.0 | 7 | 13.7 | 3 | 5.9 | 0 | 0.0 | 20 | 39.2 | 2 | 3.9 | 19 | 37.3 | 0 |
| | 2017 | 63 | 0 | 0.0 | 4 | 6.3 | 2 | 3.2 | 6 | 9.5 | 1 | 1.6 | 0 | 0.0 | 20 | 31.7 | 0 | 0.0 | 35 | 55.6 | 1 |
| Masters & IBHE Certificate | 2013 | 23 | 0 | 0.0 | 1 | 4.3 | 0 | 0.0 | 1 | 4.3 | 0 | 0.0 | 0 | 0.0 | 11 | 47.8 | 0 | 0.0 | 9 | 39.1 | 2 |
| | 2014 | 16 | 0 | 0.0 | 2 | 12.5 | 2 | 12.5 | 4 | 25.0 | 0 | 0.0 | 0 | 0.0 | 9 | 56.3 | 0 | 0.0 | 2 | 12.5 | 1 |
| | 2015 | 20 | 0 | 0.0 | 1 | 5.0 | 1 | 5.0 | 2 | 10.0 | 3 | 15.0 | 0 | 0.0 | 6 | 30.0 | 1 | 5.0 | 8 | 40.0 | 0 |
| | 2016 | 23 | 0 | 0.0 | 5 | 21.7 | 1 | 4.3 | 6 | 26.1 | 2 | 8.7 | 0 | 0.0 | 8 | 34.8 | 2 | 8.7 | 5 | 21.7 | 0 |
| | 2017 | 17 | 0 | 0.0 | 4 | 23.5 | 0 | 0.0 | 4 | 23.5 | 0 | 0.0 | 0 | 0.0 | 6 | 35.3 | 0 | 0.0 | 7 | 41.2 | 0 |
| Doctorate | 2013 | 38 | 0 | 0.0 | 1 | 2.6 | 2 | 5.3 | 3 | 7.9 | 0 | 0.0 | 0 | 0.0 | 19 | 50.0 | 1 | 2.6 | 14 | 36.8 | 1 |
| | 2014 | 47 | 0 | 0.0 | 2 | 4.3 | 5 | 10.6 | 7 | 14.9 | 1 | 2.1 | 0 | 0.0 | 20 | 42.6 | 0 | 0.0 | 16 | 34.0 | 3 |
| | 2015 | 45 | 0 | 0.0 | 5 | 11.1 | 3 | 6.7 | 8 | 17.8 | 1 | 2.2 | 0 | 0.0 | 15 | 33.3 | 0 | 0.0 | 19 | 42.2 | 2 |
| | 2016 | 28 | 0 | 0.0 | 1 | 3.6 | 0 | 0.0 | 1 | 3.6 | 1 | 3.6 | 0 | 0.0 | 12 | 42.9 | 0 | 0.0 | 14 | 50.0 | 0 |
| | 2017 | 46 | 0 | 0.0 | 0 | 0.0 | 2 | 4.3 | 2 | 4.3 | 1 | 2.2 | 0 | 0.0 | 14 | 30.4 | 0 | 0.0 | 28 | 60.9 | 1 |
| Non-Degree & Campus Certificate | 2013 | 0 | 0 | 0.0 | 0 | 0.0 | 0 | 0.0 | 0 | 0.0 | 0 | 0.0 | 0 | 0.0 | 0 | 0.0 | 0 | 0.0 | 0 | 0.0 | 0 |
| | 2014 | 0 | 0 | 0.0 | 0 | 0.0 | 0 | 0.0 | 0 | 0.0 | 0 | 0.0 | 0 | 0.0 | 0 | 0.0 | 0 | 0.0 | 0 | 0.0 | 0 |
| | 2015 | 0 | 0 | 0.0 | 0 | 0.0 | 0 | 0.0 | 0 | 0.0 | 0 | 0.0 | 0 | 0.0 | 0 | 0.0 | 0 | 0.0 | 0 | 0.0 | 0 |
| | 2016 | 0 | 0 | 0.0 | 0 | 0.0 | 0 | 0.0 | 0 | 0.0 | 0 | 0.0 | 0 | 0.0 | 0 | 0.0 | 0 | 0.0 | 0 | 0.0 | 0 |
| | 2017 | 0 | 0 | 0.0 | 0 | 0.0 | 0 | 0.0 | 0 | 0.0 | 0 | 0.0 | 0 | 0.0 | 0 | 0.0 | 0 | 0.0 | 0 | 0.0 | 0 |

Note: URM stands for Under-Represented Minority and includes American Indian or Alaska Native; Black or African-American; Hispanic / Latino race/ethnicity groups

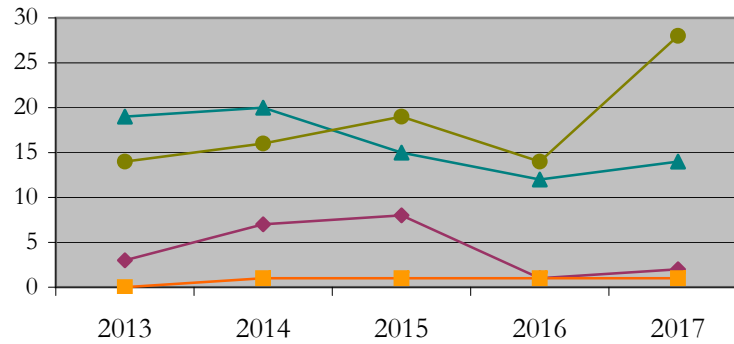
Applications - Total by Race/Ethnicity

Political Science

Fall 2013 - Fall 2017



Doctorate Students



Notes: 1) URM stands for Under-Represented Minority and includes American Indian or Alaska Native; Black or African-American; Hispanic / Latino race/ethnicity groups

2) Individual URM groups, Native Hawaiian Pacific Islander, Two or More Races, and Other race/ethnicity categories left off this charts due to relatively low numbers

Applications - Admitted

by Race/Ethnicity

Political Science

Fall 2013 - Fall 2017

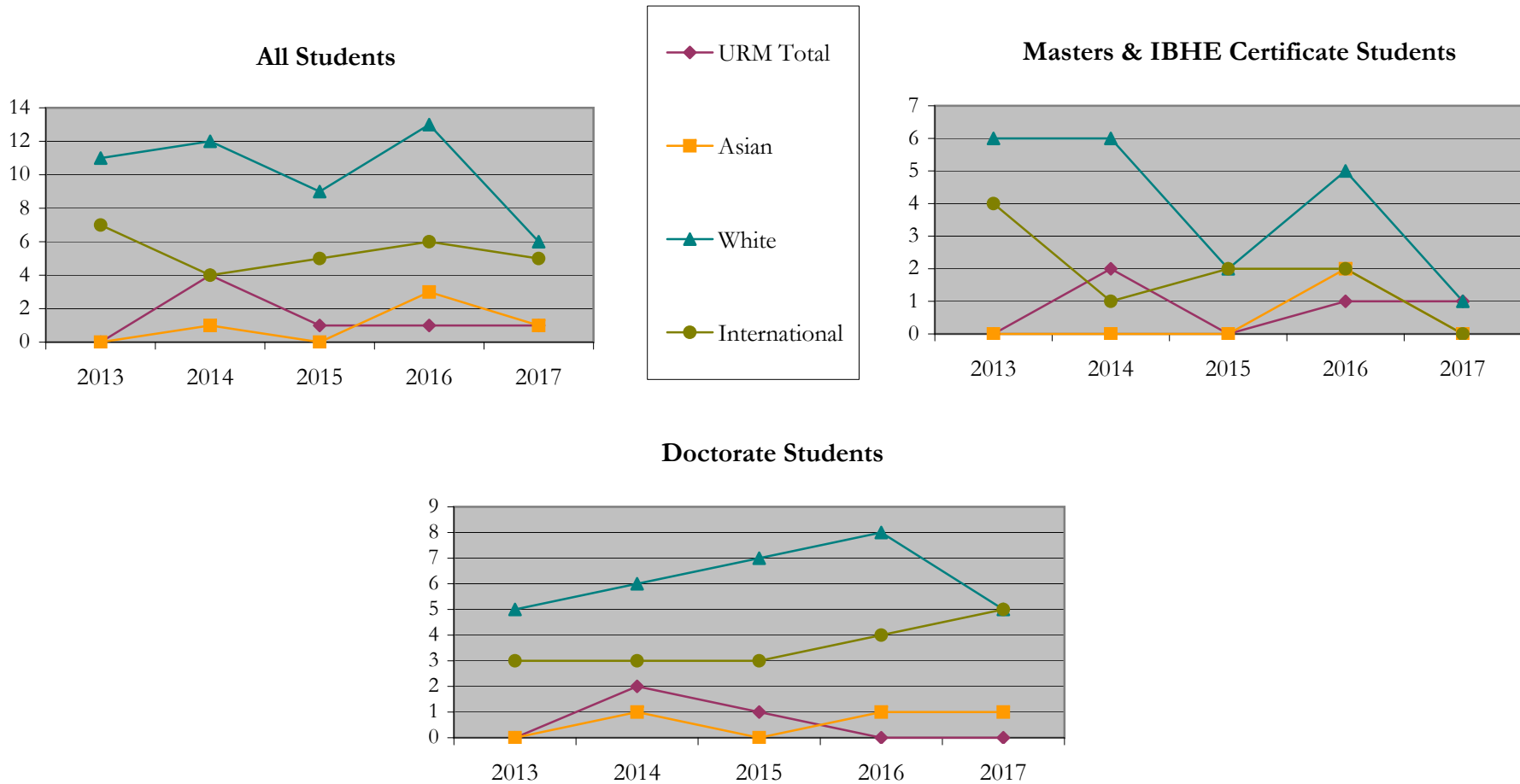
| | | Total | Under Represented Minorities (URM) | | | | | | | | Asian | | Native Hawaiian or Pacific Islander | | White | | Two or More Races | | International | | Not Reported |
|---------------------------------|------|-------|------------------------------------|-----|---------------------------|------|-------------------|------|-----------|------|-------|------|-------------------------------------|-----|-------|------|-------------------|-----|---------------|------|--------------|
| | | | American Indian or Alaska Native | | Black or African American | | Hispanic / Latino | | URM Total | | | | | | | | | | | | |
| | | | Count | % | Count | % | Count | % | Count | % | | | | | | | | | | | |
| All | 2013 | 19 | 0 | 0.0 | 0 | 0.0 | 0 | 0.0 | 0 | 0.0 | 0 | 0.0 | 0 | 0.0 | 11 | 57.9 | 0 | 0.0 | 7 | 36.8 | 1 |
| | 2014 | 23 | 0 | 0.0 | 1 | 4.3 | 3 | 13.0 | 4 | 17.4 | 1 | 4.3 | 0 | 0.0 | 12 | 52.2 | 0 | 0.0 | 4 | 17.4 | 2 |
| | 2015 | 15 | 0 | 0.0 | 0 | 0.0 | 1 | 6.7 | 1 | 6.7 | 0 | 0.0 | 0 | 0.0 | 9 | 60.0 | 0 | 0.0 | 5 | 33.3 | 0 |
| | 2016 | 23 | 0 | 0.0 | 0 | 0.0 | 1 | 4.3 | 1 | 4.3 | 3 | 13.0 | 0 | 0.0 | 13 | 56.5 | 0 | 0.0 | 6 | 26.1 | 0 |
| | 2017 | 13 | 0 | 0.0 | 1 | 7.7 | 0 | 0.0 | 1 | 7.7 | 1 | 7.7 | 0 | 0.0 | 6 | 46.2 | 0 | 0.0 | 5 | 38.5 | 0 |
| Masters & IBHE Certificate | 2013 | 11 | 0 | 0.0 | 0 | 0.0 | 0 | 0.0 | 0 | 0.0 | 0 | 0.0 | 0 | 0.0 | 6 | 54.5 | 0 | 0.0 | 4 | 36.4 | 1 |
| | 2014 | 10 | 0 | 0.0 | 1 | 10.0 | 1 | 10.0 | 2 | 20.0 | 0 | 0.0 | 0 | 0.0 | 6 | 60.0 | 0 | 0.0 | 1 | 10.0 | 1 |
| | 2015 | 4 | 0 | 0.0 | 0 | 0.0 | 0 | 0.0 | 0 | 0.0 | 0 | 0.0 | 0 | 0.0 | 2 | 50.0 | 0 | 0.0 | 2 | 50.0 | 0 |
| | 2016 | 10 | 0 | 0.0 | 0 | 0.0 | 1 | 10.0 | 1 | 10.0 | 2 | 20.0 | 0 | 0.0 | 5 | 50.0 | 0 | 0.0 | 2 | 20.0 | 0 |
| | 2017 | 2 | 0 | 0.0 | 1 | 50.0 | 0 | 0.0 | 1 | 50.0 | 0 | 0.0 | 0 | 0.0 | 1 | 50.0 | 0 | 0.0 | 0 | 0.0 | 0 |
| Doctorate | 2013 | 8 | 0 | 0.0 | 0 | 0.0 | 0 | 0.0 | 0 | 0.0 | 0 | 0.0 | 0 | 0.0 | 5 | 62.5 | 0 | 0.0 | 3 | 37.5 | 0 |
| | 2014 | 13 | 0 | 0.0 | 0 | 0.0 | 2 | 15.4 | 2 | 15.4 | 1 | 7.7 | 0 | 0.0 | 6 | 46.2 | 0 | 0.0 | 3 | 23.1 | 1 |
| | 2015 | 11 | 0 | 0.0 | 0 | 0.0 | 1 | 9.1 | 1 | 9.1 | 0 | 0.0 | 0 | 0.0 | 7 | 63.6 | 0 | 0.0 | 3 | 27.3 | 0 |
| | 2016 | 13 | 0 | 0.0 | 0 | 0.0 | 0 | 0.0 | 0 | 0.0 | 1 | 7.7 | 0 | 0.0 | 8 | 61.5 | 0 | 0.0 | 4 | 30.8 | 0 |
| | 2017 | 11 | 0 | 0.0 | 0 | 0.0 | 0 | 0.0 | 0 | 0.0 | 1 | 9.1 | 0 | 0.0 | 5 | 45.5 | 0 | 0.0 | 5 | 45.5 | 0 |
| Non-Degree & Campus Certificate | 2013 | 0 | 0 | 0.0 | 0 | 0.0 | 0 | 0.0 | 0 | 0.0 | 0 | 0.0 | 0 | 0.0 | 0 | 0.0 | 0 | 0.0 | 0 | 0.0 | 0 |
| | 2014 | 0 | 0 | 0.0 | 0 | 0.0 | 0 | 0.0 | 0 | 0.0 | 0 | 0.0 | 0 | 0.0 | 0 | 0.0 | 0 | 0.0 | 0 | 0.0 | 0 |
| | 2015 | 0 | 0 | 0.0 | 0 | 0.0 | 0 | 0.0 | 0 | 0.0 | 0 | 0.0 | 0 | 0.0 | 0 | 0.0 | 0 | 0.0 | 0 | 0.0 | 0 |
| | 2016 | 0 | 0 | 0.0 | 0 | 0.0 | 0 | 0.0 | 0 | 0.0 | 0 | 0.0 | 0 | 0.0 | 0 | 0.0 | 0 | 0.0 | 0 | 0.0 | 0 |
| | 2017 | 0 | 0 | 0.0 | 0 | 0.0 | 0 | 0.0 | 0 | 0.0 | 0 | 0.0 | 0 | 0.0 | 0 | 0.0 | 0 | 0.0 | 0 | 0.0 | 0 |

Note: URM stands for Under-Represented Minority and includes American Indian or Alaska Native; Black or African-American; Hispanic / Latino race/ethnicity groups

Applications - Admitted by Race/Ethnicity

Political Science

Fall 2013 - Fall 2017



Notes: 1) URM stands for Under-Represented Minority and includes American Indian or Alaska Native; Black or African-American; Hispanic / Latino race/ethnicity groups

2) Individual URM groups, Native Hawaiian Pacific Islander, Two or More Races, and Other race/ethnicity categories left off this charts due to relatively low numbers

**Enrollment - New
by Race/Ethnicity**

Political Science

Fall 2013 - Fall 2017

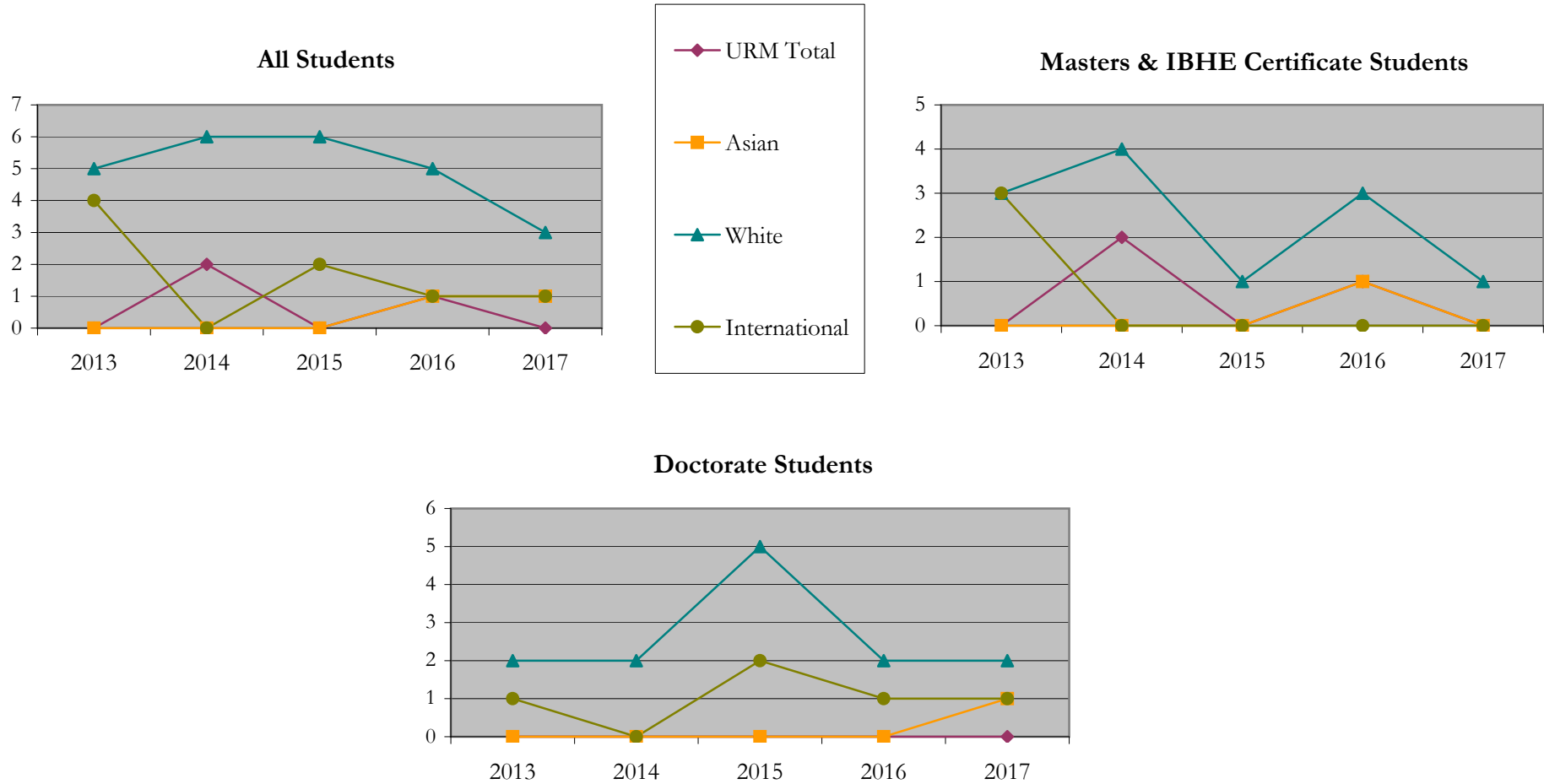
| | | Total | Under Represented Minorities (URM) | | | | | | | | Asian | | Native Hawaiian or Pacific Islander | | White | | Two or More Races | | International | | Not Reported |
|---------------------------------|------|-------|------------------------------------|-----|---------------------------|------|-------------------|------|-----------|------|-------|------|-------------------------------------|-----|-------|-------|-------------------|-----|---------------|------|--------------|
| | | | American Indian or Alaska Native | | Black or African American | | Hispanic / Latino | | URM Total | | | | | | | | | | | | |
| | | | Count | % | Count | % | Count | % | Count | % | | | | | | | | | | | |
| All | 2013 | 9 | 0 | 0.0 | 0 | 0.0 | 0 | 0.0 | 0 | 0.0 | 0 | 0.0 | 0 | 0.0 | 5 | 55.6 | 0 | 0.0 | 4 | 44.4 | 0 |
| | 2014 | 8 | 0 | 0.0 | 1 | 12.5 | 1 | 12.5 | 2 | 25.0 | 0 | 0.0 | 0 | 0.0 | 6 | 75.0 | 0 | 0.0 | 0 | 0.0 | 0 |
| | 2015 | 8 | 0 | 0.0 | 0 | 0.0 | 0 | 0.0 | 0 | 0.0 | 0 | 0.0 | 0 | 0.0 | 6 | 75.0 | 0 | 0.0 | 2 | 25.0 | 0 |
| | 2016 | 8 | 0 | 0.0 | 0 | 0.0 | 1 | 12.5 | 1 | 12.5 | 1 | 12.5 | 0 | 0.0 | 5 | 62.5 | 0 | 0.0 | 1 | 12.5 | 0 |
| | 2017 | 5 | 0 | 0.0 | 0 | 0.0 | 0 | 0.0 | 0 | 0.0 | 1 | 20.0 | 0 | 0.0 | 3 | 60.0 | 0 | 0.0 | 1 | 20.0 | 0 |
| Masters & IBHE Certificate | 2013 | 6 | 0 | 0.0 | 0 | 0.0 | 0 | 0.0 | 0 | 0.0 | 0 | 0.0 | 0 | 0.0 | 3 | 50.0 | 0 | 0.0 | 3 | 50.0 | 0 |
| | 2014 | 6 | 0 | 0.0 | 1 | 16.7 | 1 | 16.7 | 2 | 33.3 | 0 | 0.0 | 0 | 0.0 | 4 | 66.7 | 0 | 0.0 | 0 | 0.0 | 0 |
| | 2015 | 1 | 0 | 0.0 | 0 | 0.0 | 0 | 0.0 | 0 | 0.0 | 0 | 0.0 | 0 | 0.0 | 1 | 100.0 | 0 | 0.0 | 0 | 0.0 | 0 |
| | 2016 | 5 | 0 | 0.0 | 0 | 0.0 | 1 | 20.0 | 1 | 20.0 | 1 | 20.0 | 0 | 0.0 | 3 | 60.0 | 0 | 0.0 | 0 | 0.0 | 0 |
| | 2017 | 1 | 0 | 0.0 | 0 | 0.0 | 0 | 0.0 | 0 | 0.0 | 0 | 0.0 | 0 | 0.0 | 1 | 100.0 | 0 | 0.0 | 0 | 0.0 | 0 |
| Doctorate | 2013 | 3 | 0 | 0.0 | 0 | 0.0 | 0 | 0.0 | 0 | 0.0 | 0 | 0.0 | 0 | 0.0 | 2 | 66.7 | 0 | 0.0 | 1 | 33.3 | 0 |
| | 2014 | 2 | 0 | 0.0 | 0 | 0.0 | 0 | 0.0 | 0 | 0.0 | 0 | 0.0 | 0 | 0.0 | 2 | 100.0 | 0 | 0.0 | 0 | 0.0 | 0 |
| | 2015 | 7 | 0 | 0.0 | 0 | 0.0 | 0 | 0.0 | 0 | 0.0 | 0 | 0.0 | 0 | 0.0 | 5 | 71.4 | 0 | 0.0 | 2 | 28.6 | 0 |
| | 2016 | 3 | 0 | 0.0 | 0 | 0.0 | 0 | 0.0 | 0 | 0.0 | 0 | 0.0 | 0 | 0.0 | 2 | 66.7 | 0 | 0.0 | 1 | 33.3 | 0 |
| | 2017 | 4 | 0 | 0.0 | 0 | 0.0 | 0 | 0.0 | 0 | 0.0 | 1 | 25.0 | 0 | 0.0 | 2 | 50.0 | 0 | 0.0 | 1 | 25.0 | 0 |
| Non-Degree & Campus Certificate | 2013 | 0 | 0 | 0.0 | 0 | 0.0 | 0 | 0.0 | 0 | 0.0 | 0 | 0.0 | 0 | 0.0 | 0 | 0.0 | 0 | 0.0 | 0 | 0.0 | 0 |
| | 2014 | 0 | 0 | 0.0 | 0 | 0.0 | 0 | 0.0 | 0 | 0.0 | 0 | 0.0 | 0 | 0.0 | 0 | 0.0 | 0 | 0.0 | 0 | 0.0 | 0 |
| | 2015 | 0 | 0 | 0.0 | 0 | 0.0 | 0 | 0.0 | 0 | 0.0 | 0 | 0.0 | 0 | 0.0 | 0 | 0.0 | 0 | 0.0 | 0 | 0.0 | 0 |
| | 2016 | 0 | 0 | 0.0 | 0 | 0.0 | 0 | 0.0 | 0 | 0.0 | 0 | 0.0 | 0 | 0.0 | 0 | 0.0 | 0 | 0.0 | 0 | 0.0 | 0 |
| | 2017 | 0 | 0 | 0.0 | 0 | 0.0 | 0 | 0.0 | 0 | 0.0 | 0 | 0.0 | 0 | 0.0 | 0 | 0.0 | 0 | 0.0 | 0 | 0.0 | 0 |

Note: URM stands for Under-Represented Minority and includes American Indian or Alaska Native; Black or African-American; Hispanic / Latino race/ethnicity groups

Enrollment - New by Race/Ethnicity

Political Science

Fall 2013 - Fall 2017



Notes: 1) URM stands for Under-Represented Minority and includes American Indian or Alaska Native; Black or African-American; Hispanic / Latino race/ethnicity groups

2) Individual URM groups, Native Hawaiian Pacific Islander, Two or More Races, and Other race/ethnicity categories left off this charts due to relatively low numbers

**Enrollment - Total
by Race/Ethnicity**

Political Science

Fall 2013 - Fall 2017

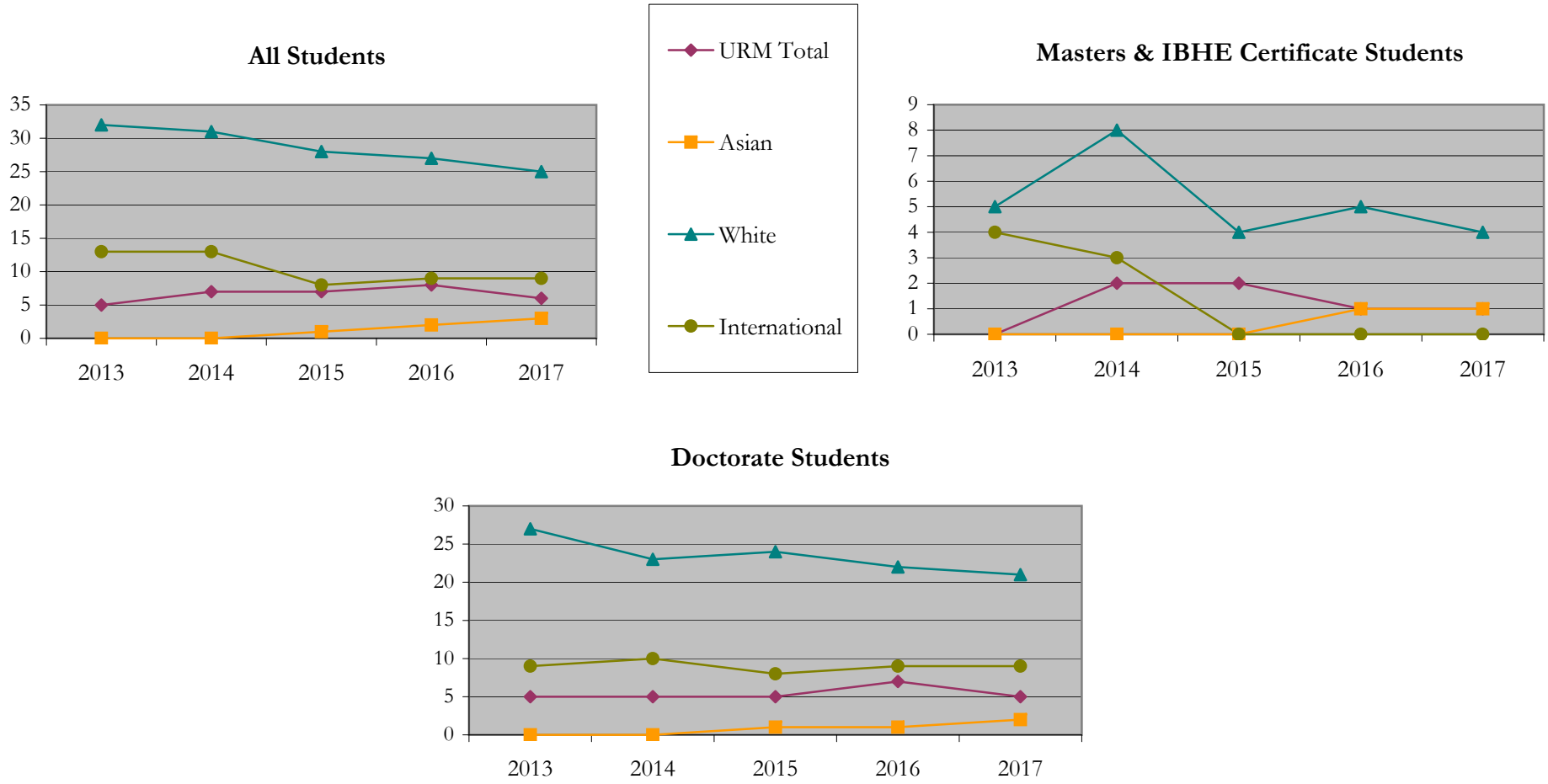
| | | Total | Under Represented Minorities (URM) | | | | | | | | Asian | | Native Hawaiian or Pacific Islander | | White | | Two or More Races | | International | | Not Reported |
|---------------------------------|------|-------|------------------------------------|-----|---------------------------|------|-------------------|------|-----------|------|-------|------|-------------------------------------|-----|-------|------|-------------------|-----|---------------|------|--------------|
| | | | American Indian or Alaska Native | | Black or African American | | Hispanic / Latino | | URM Total | | | | | | | | | | | | |
| | | | Count | % | Count | % | Count | % | Count | % | | | | | | | | | | | |
| All | 2013 | 51 | 0 | 0.0 | 1 | 2.0 | 4 | 7.8 | 5 | 9.8 | 0 | 0.0 | 0 | 0.0 | 32 | 62.7 | 0 | 0.0 | 13 | 25.5 | 1 |
| | 2014 | 52 | 0 | 0.0 | 2 | 3.8 | 5 | 9.6 | 7 | 13.5 | 0 | 0.0 | 0 | 0.0 | 31 | 59.6 | 0 | 0.0 | 13 | 25.0 | 1 |
| | 2015 | 45 | 0 | 0.0 | 2 | 4.4 | 5 | 11.1 | 7 | 15.6 | 1 | 2.2 | 0 | 0.0 | 28 | 62.2 | 0 | 0.0 | 8 | 17.8 | 1 |
| | 2016 | 47 | 0 | 0.0 | 2 | 4.3 | 6 | 12.8 | 8 | 17.0 | 2 | 4.3 | 0 | 0.0 | 27 | 57.4 | 0 | 0.0 | 9 | 19.1 | 1 |
| | 2017 | 44 | 0 | 0.0 | 1 | 2.3 | 5 | 11.4 | 6 | 13.6 | 3 | 6.8 | 0 | 0.0 | 25 | 56.8 | 0 | 0.0 | 9 | 20.5 | 1 |
| Masters & IBHE Certificate | 2013 | 9 | 0 | 0.0 | 0 | 0.0 | 0 | 0.0 | 0 | 0.0 | 0 | 0.0 | 0 | 0.0 | 5 | 55.6 | 0 | 0.0 | 4 | 44.4 | 0 |
| | 2014 | 13 | 0 | 0.0 | 1 | 7.7 | 1 | 7.7 | 2 | 15.4 | 0 | 0.0 | 0 | 0.0 | 8 | 61.5 | 0 | 0.0 | 3 | 23.1 | 0 |
| | 2015 | 6 | 0 | 0.0 | 1 | 16.7 | 1 | 16.7 | 2 | 33.3 | 0 | 0.0 | 0 | 0.0 | 4 | 66.7 | 0 | 0.0 | 0 | 0.0 | 0 |
| | 2016 | 7 | 0 | 0.0 | 0 | 0.0 | 1 | 14.3 | 1 | 14.3 | 1 | 14.3 | 0 | 0.0 | 5 | 71.4 | 0 | 0.0 | 0 | 0.0 | 0 |
| | 2017 | 6 | 0 | 0.0 | 0 | 0.0 | 1 | 16.7 | 1 | 16.7 | 1 | 16.7 | 0 | 0.0 | 4 | 66.7 | 0 | 0.0 | 0 | 0.0 | 0 |
| Doctorate | 2013 | 42 | 0 | 0.0 | 1 | 2.4 | 4 | 9.5 | 5 | 11.9 | 0 | 0.0 | 0 | 0.0 | 27 | 64.3 | 0 | 0.0 | 9 | 21.4 | 1 |
| | 2014 | 39 | 0 | 0.0 | 1 | 2.6 | 4 | 10.3 | 5 | 12.8 | 0 | 0.0 | 0 | 0.0 | 23 | 59.0 | 0 | 0.0 | 10 | 25.6 | 1 |
| | 2015 | 39 | 0 | 0.0 | 1 | 2.6 | 4 | 10.3 | 5 | 12.8 | 1 | 2.6 | 0 | 0.0 | 24 | 61.5 | 0 | 0.0 | 8 | 20.5 | 1 |
| | 2016 | 40 | 0 | 0.0 | 2 | 5.0 | 5 | 12.5 | 7 | 17.5 | 1 | 2.5 | 0 | 0.0 | 22 | 55.0 | 0 | 0.0 | 9 | 22.5 | 1 |
| | 2017 | 38 | 0 | 0.0 | 1 | 2.6 | 4 | 10.5 | 5 | 13.2 | 2 | 5.3 | 0 | 0.0 | 21 | 55.3 | 0 | 0.0 | 9 | 23.7 | 1 |
| Non-Degree & Campus Certificate | 2013 | 0 | 0 | 0.0 | 0 | 0.0 | 0 | 0.0 | 0 | 0.0 | 0 | 0.0 | 0 | 0.0 | 0 | 0.0 | 0 | 0.0 | 0 | 0.0 | 0 |
| | 2014 | 0 | 0 | 0.0 | 0 | 0.0 | 0 | 0.0 | 0 | 0.0 | 0 | 0.0 | 0 | 0.0 | 0 | 0.0 | 0 | 0.0 | 0 | 0.0 | 0 |
| | 2015 | 0 | 0 | 0.0 | 0 | 0.0 | 0 | 0.0 | 0 | 0.0 | 0 | 0.0 | 0 | 0.0 | 0 | 0.0 | 0 | 0.0 | 0 | 0.0 | 0 |
| | 2016 | 0 | 0 | 0.0 | 0 | 0.0 | 0 | 0.0 | 0 | 0.0 | 0 | 0.0 | 0 | 0.0 | 0 | 0.0 | 0 | 0.0 | 0 | 0.0 | 0 |
| | 2017 | 0 | 0 | 0.0 | 0 | 0.0 | 0 | 0.0 | 0 | 0.0 | 0 | 0.0 | 0 | 0.0 | 0 | 0.0 | 0 | 0.0 | 0 | 0.0 | 0 |

Note: URM stands for Under-Represented Minority and includes American Indian or Alaska Native; Black or African-American; Hispanic / Latino race/ethnicity groups

Enrollment - Total by Race/Ethnicity

Political Science

Fall 2013 - Fall 2017



Notes: 1) URM stands for Under-Represented Minority and includes American Indian or Alaska Native; Black or African-American; Hispanic / Latino race/ethnicity groups

2) Individual URM groups, Native Hawaiian Pacific Islander, Two or More Races, and Other race/ethnicity categories left off this charts due to relatively low numbers

Enrollment
by Student Type, Enrollment Time, and Gender

Political Science

Fall 2013 - Fall 2017

| | | Total | New | | Continuing | | Male | | Female | | Gender Not Reported | Part-time | | Full-time | |
|---------------------------------|------|-------|-------|------|------------|------|-------|------|--------|------|---------------------|-----------|------|-----------|-------|
| | | | Count | % | Count | % | Count | % | Count | % | | Count | % | Count | % |
| All | 2013 | 51 | 9 | 17.6 | 42 | 82.4 | 21 | 41.2 | 30 | 58.8 | 0 | 11 | 21.6 | 40 | 78.4 |
| | 2014 | 52 | 8 | 15.4 | 44 | 84.6 | 25 | 48.1 | 27 | 51.9 | 0 | 17 | 32.7 | 35 | 67.3 |
| | 2015 | 45 | 8 | 17.8 | 37 | 82.2 | 21 | 46.7 | 24 | 53.3 | 0 | 11 | 24.4 | 34 | 75.6 |
| | 2016 | 47 | 8 | 17.0 | 39 | 83.0 | 20 | 42.6 | 27 | 57.4 | 0 | 12 | 25.5 | 35 | 74.5 |
| | 2017 | 44 | 5 | 11.4 | 39 | 88.6 | 19 | 43.2 | 25 | 56.8 | 0 | 20 | 45.5 | 24 | 54.5 |
| Masters & IBHE Certificate | 2013 | 9 | 6 | 66.7 | 3 | 33.3 | 3 | 33.3 | 6 | 66.7 | 0 | 0 | 0.0 | 9 | 100.0 |
| | 2014 | 13 | 6 | 46.2 | 7 | 53.8 | 8 | 61.5 | 5 | 38.5 | 0 | 4 | 30.8 | 9 | 69.2 |
| | 2015 | 6 | 1 | 16.7 | 5 | 83.3 | 4 | 66.7 | 2 | 33.3 | 0 | 0 | 0.0 | 6 | 100.0 |
| | 2016 | 7 | 5 | 71.4 | 2 | 28.6 | 3 | 42.9 | 4 | 57.1 | 0 | 1 | 14.3 | 6 | 85.7 |
| | 2017 | 6 | 1 | 16.7 | 5 | 83.3 | 2 | 33.3 | 4 | 66.7 | 0 | 4 | 66.7 | 2 | 33.3 |
| Doctorate | 2013 | 42 | 3 | 7.1 | 39 | 92.9 | 18 | 42.9 | 24 | 57.1 | 0 | 11 | 26.2 | 31 | 73.8 |
| | 2014 | 39 | 2 | 5.1 | 37 | 94.9 | 17 | 43.6 | 22 | 56.4 | 0 | 13 | 33.3 | 26 | 66.7 |
| | 2015 | 39 | 7 | 17.9 | 32 | 82.1 | 17 | 43.6 | 22 | 56.4 | 0 | 11 | 28.2 | 28 | 71.8 |
| | 2016 | 40 | 3 | 7.5 | 37 | 92.5 | 17 | 42.5 | 23 | 57.5 | 0 | 11 | 27.5 | 29 | 72.5 |
| | 2017 | 38 | 4 | 10.5 | 34 | 89.5 | 17 | 44.7 | 21 | 55.3 | 0 | 16 | 42.1 | 22 | 57.9 |
| Non-Degree & Campus Certificate | 2013 | 0 | 0 | 0.0 | 0 | 0.0 | 0 | 0.0 | 0 | 0.0 | 0 | 0 | 0.0 | 0 | 0.0 |
| | 2014 | 0 | 0 | 0.0 | 0 | 0.0 | 0 | 0.0 | 0 | 0.0 | 0 | 0 | 0.0 | 0 | 0.0 |
| | 2015 | 0 | 0 | 0.0 | 0 | 0.0 | 0 | 0.0 | 0 | 0.0 | 0 | 0 | 0.0 | 0 | 0.0 |
| | 2016 | 0 | 0 | 0.0 | 0 | 0.0 | 0 | 0.0 | 0 | 0.0 | 0 | 0 | 0.0 | 0 | 0.0 |
| | 2017 | 0 | 0 | 0.0 | 0 | 0.0 | 0 | 0.0 | 0 | 0.0 | 0 | 0 | 0.0 | 0 | 0.0 |

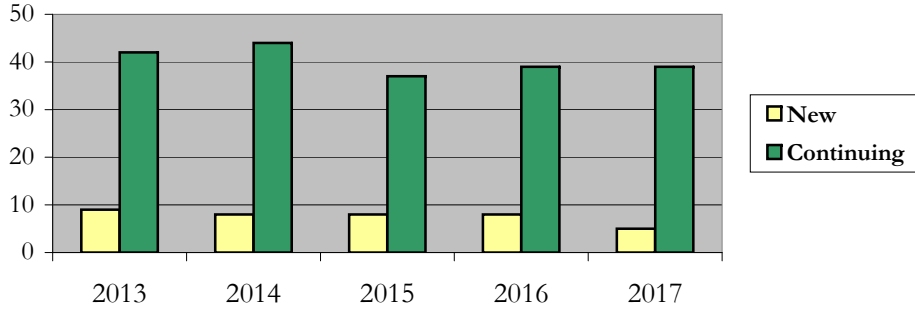
Enrollment

by Student Type, Enrollment Time, and Gender (All Students)

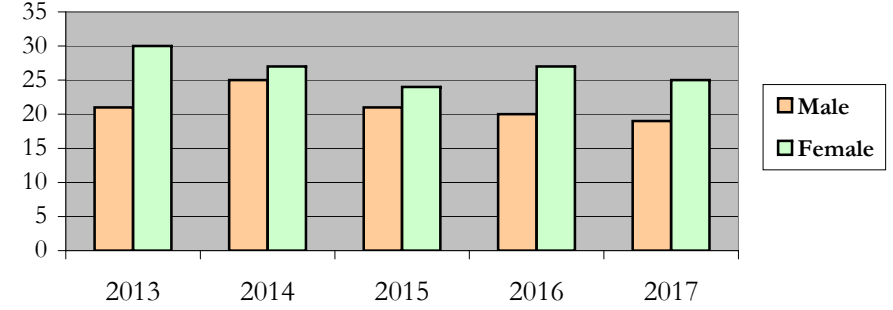
Political Science

Fall 2013 - Fall 2017

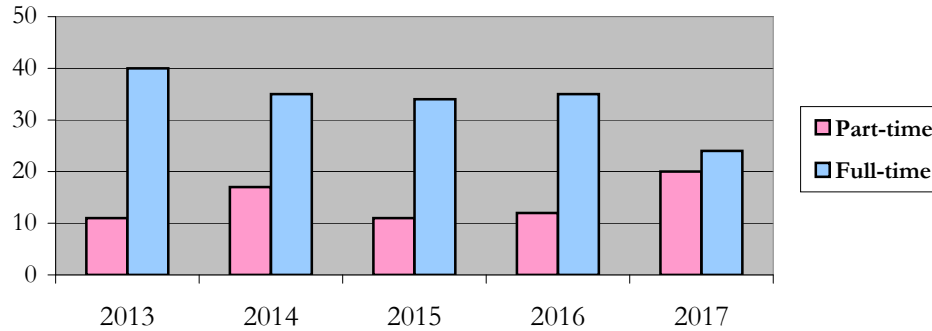
New and Continuing Enrollment



Enrollment by Gender



Enrollment by Student Enrollment Time

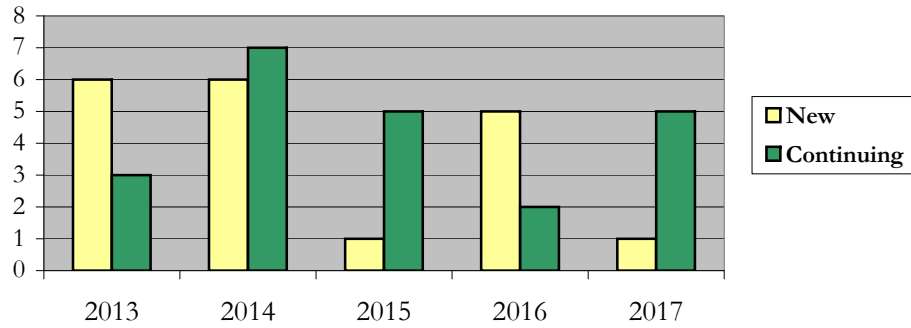


Enrollment
by Student Type, Enrollment Time, and Gender (Master's Students)

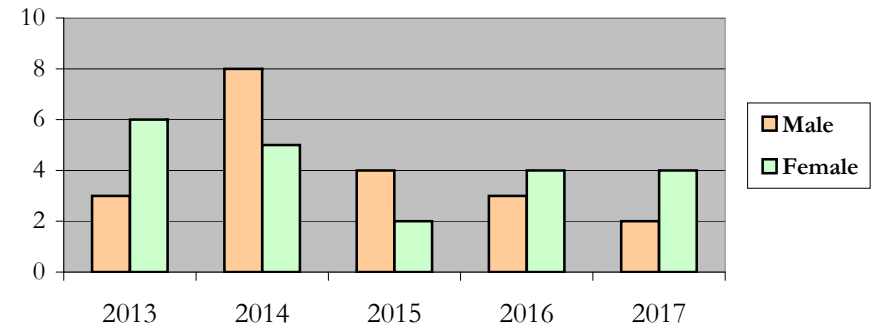
Political Science

Fall 2013 - Fall 2017

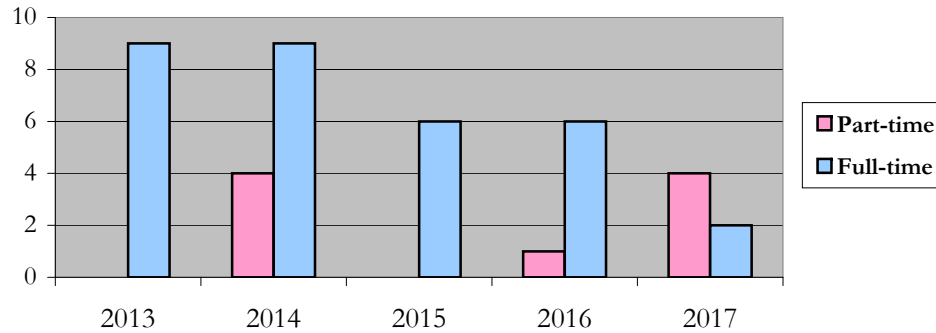
New and Continuing Enrollment



Enrollment by Gender



Enrollment by Student Enrollment Time



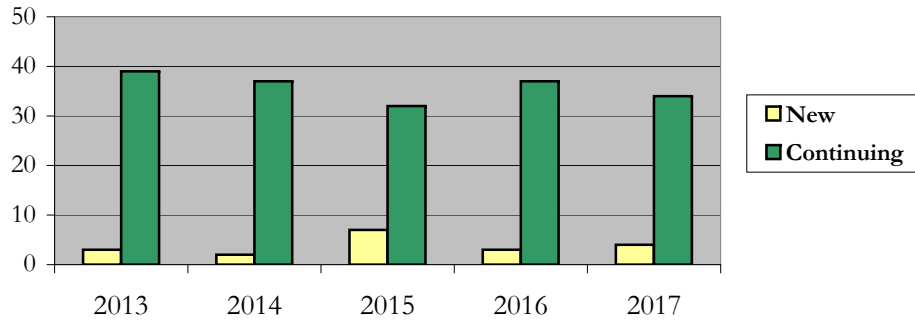
Enrollment

by Student Type, Enrollment Time, and Gender (Doctorate Students)

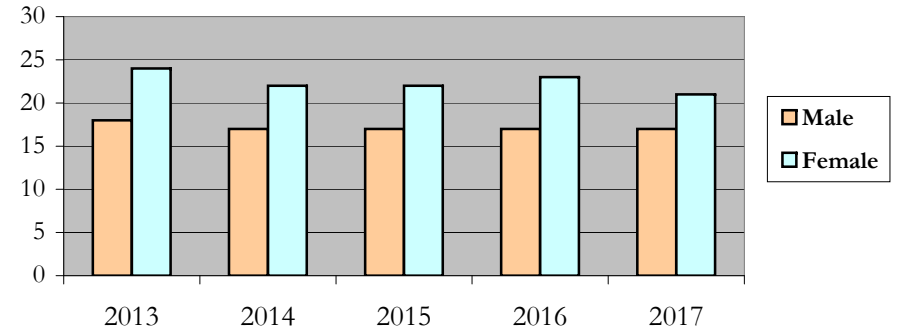
Political Science

Fall 2013 - Fall 2017

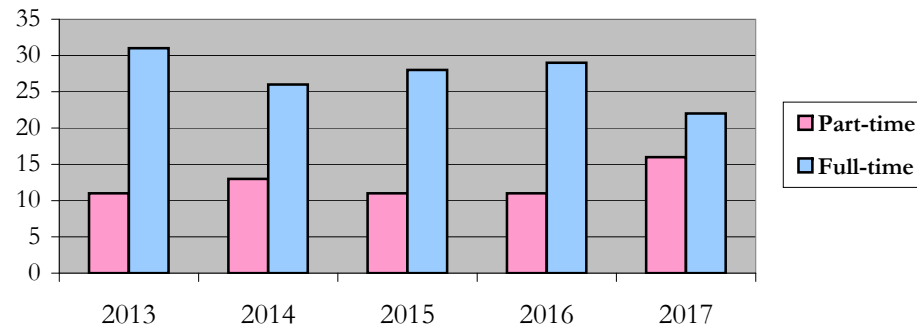
New and Continuing Enrollment



Enrollment by Gender



Enrollment by Student Enrollment Time



Degrees Conferred
by Race/Ethnicity

Political Science

Fall 2013 - Fall 2017

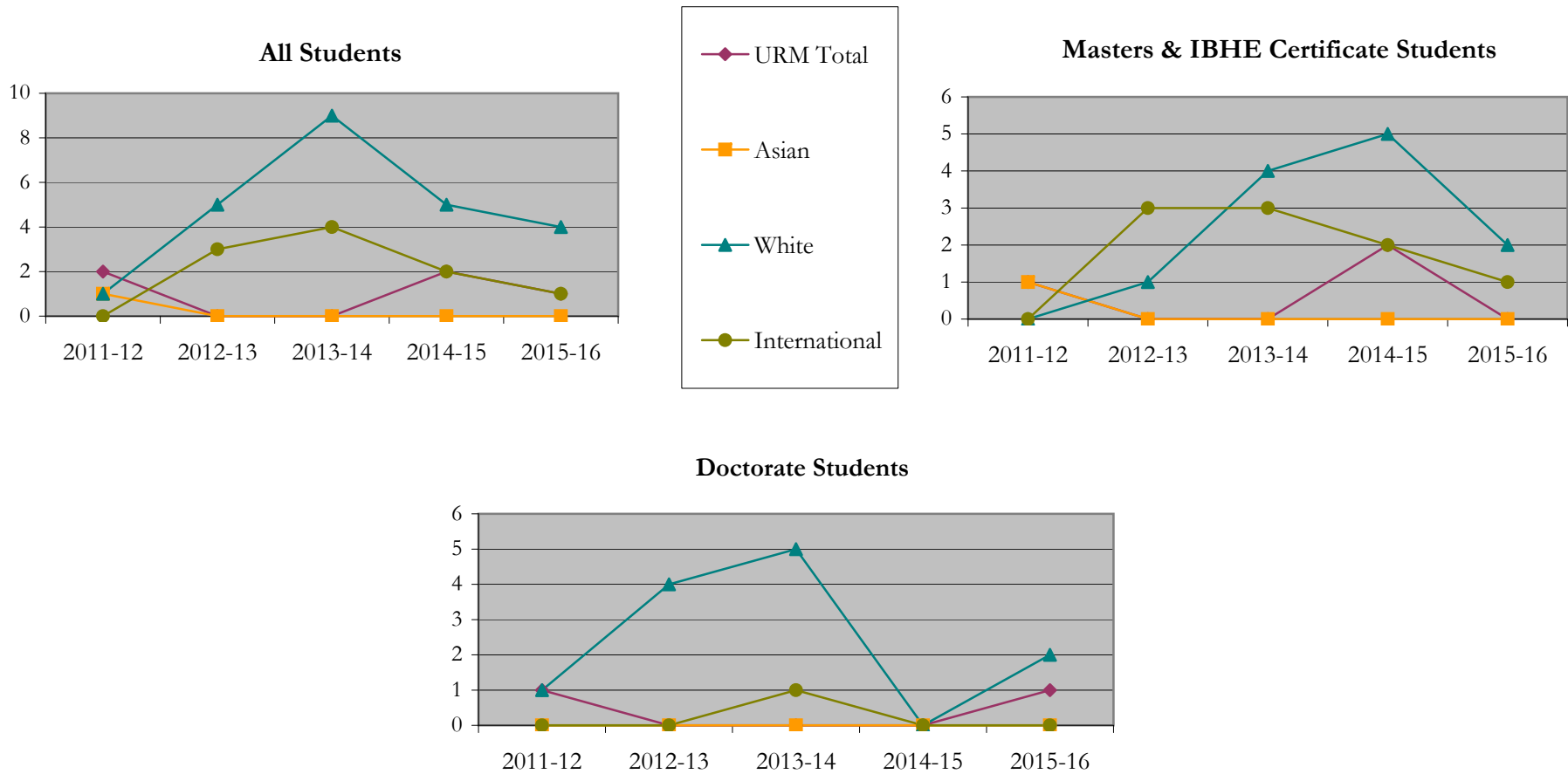
| | | Total | Under Represented Minorities (URM) | | | | | | | | Asian | Native Hawaiian or Pacific Islander | | White | | Two or More Races | | International | | Not Reported | | |
|---------------------------------|-----------|-------|------------------------------------|-----|---------------------------|------|-------------------|------|-----------|------|-------|-------------------------------------|---|-------|---|-------------------|---|---------------|---|--------------|-------|---|
| | | | American Indian or Alaska Native | | Black or African American | | Hispanic / Latino | | URM Total | | | Count | % | Count | % | Count | % | Count | % | | Count | % |
| | | | Count | % | Count | % | Count | % | Count | % | | | | | | | | | | | | |
| All | 2012 - 13 | 4 | 0 | 0.0 | 2 | 50.0 | 0 | 0.0 | 2 | 50.0 | 1 | 25.0 | 0 | 0.0 | 1 | 25.0 | 0 | 0.0 | 0 | 0.0 | 0 | |
| | 2013 - 14 | 8 | 0 | 0.0 | 0 | 0.0 | 0 | 0.0 | 0 | 0.0 | 0 | 0.0 | 0 | 0.0 | 5 | 62.5 | 0 | 0.0 | 3 | 37.5 | 0 | |
| | 2014 - 15 | 13 | 0 | 0.0 | 0 | 0.0 | 0 | 0.0 | 0 | 0.0 | 0 | 0.0 | 0 | 0.0 | 9 | 69.2 | 0 | 0.0 | 4 | 30.8 | 0 | |
| | 2015 - 16 | 9 | 0 | 0.0 | 1 | 11.1 | 1 | 11.1 | 2 | 22.2 | 0 | 0.0 | 0 | 0.0 | 5 | 55.6 | 0 | 0.0 | 2 | 22.2 | 0 | |
| | 2016 - 17 | 6 | 0 | 0.0 | 1 | 16.7 | 0 | 0.0 | 1 | 16.7 | 0 | 0.0 | 0 | 0.0 | 4 | 66.7 | 0 | 0.0 | 1 | 16.7 | 0 | |
| Masters & IBHE Certificate | 2012 - 13 | 2 | 0 | 0.0 | 1 | 50.0 | 0 | 0.0 | 1 | 50.0 | 1 | 50.0 | 0 | 0.0 | 0 | 0.0 | 0 | 0.0 | 0 | 0.0 | 0 | |
| | 2013 - 14 | 4 | 0 | 0.0 | 0 | 0.0 | 0 | 0.0 | 0 | 0.0 | 0 | 0.0 | 0 | 0.0 | 1 | 25.0 | 0 | 0.0 | 3 | 75.0 | 0 | |
| | 2014 - 15 | 7 | 0 | 0.0 | 0 | 0.0 | 0 | 0.0 | 0 | 0.0 | 0 | 0.0 | 0 | 0.0 | 4 | 57.1 | 0 | 0.0 | 3 | 42.9 | 0 | |
| | 2015 - 16 | 9 | 0 | 0.0 | 1 | 11.1 | 1 | 11.1 | 2 | 22.2 | 0 | 0.0 | 0 | 0.0 | 5 | 55.6 | 0 | 0.0 | 2 | 22.2 | 0 | |
| | 2016 - 17 | 3 | 0 | 0.0 | 0 | 0.0 | 0 | 0.0 | 0 | 0.0 | 0 | 0.0 | 0 | 0.0 | 2 | 66.7 | 0 | 0.0 | 1 | 33.3 | 0 | |
| Doctorate | 2012 - 13 | 2 | 0 | 0.0 | 1 | 50.0 | 0 | 0.0 | 1 | 50.0 | 0 | 0.0 | 0 | 0.0 | 1 | 50.0 | 0 | 0.0 | 0 | 0.0 | 0 | |
| | 2013 - 14 | 4 | 0 | 0.0 | 0 | 0.0 | 0 | 0.0 | 0 | 0.0 | 0 | 0.0 | 0 | 0.0 | 4 | 100.0 | 0 | 0.0 | 0 | 0.0 | 0 | |
| | 2014 - 15 | 6 | 0 | 0.0 | 0 | 0.0 | 0 | 0.0 | 0 | 0.0 | 0 | 0.0 | 0 | 0.0 | 5 | 83.3 | 0 | 0.0 | 1 | 16.7 | 0 | |
| | 2015 - 16 | 0 | 0 | 0.0 | 0 | 0.0 | 0 | 0.0 | 0 | 0.0 | 0 | 0.0 | 0 | 0.0 | 0 | 0.0 | 0 | 0.0 | 0 | 0.0 | 0 | |
| | 2016 - 17 | 3 | 0 | 0.0 | 1 | 33.3 | 0 | 0.0 | 1 | 33.3 | 0 | 0.0 | 0 | 0.0 | 2 | 66.7 | 0 | 0.0 | 0 | 0.0 | 0 | |
| Non-Degree & Campus Certificate | 2012 - 13 | 0 | 0 | 0.0 | 0 | 0.0 | 0 | 0.0 | 0 | 0.0 | 0 | 0.0 | 0 | 0.0 | 0 | 0.0 | 0 | 0.0 | 0 | 0.0 | 0 | |
| | 2013 - 14 | 0 | 0 | 0.0 | 0 | 0.0 | 0 | 0.0 | 0 | 0.0 | 0 | 0.0 | 0 | 0.0 | 0 | 0.0 | 0 | 0.0 | 0 | 0.0 | 0 | |
| | 2014 - 15 | 0 | 0 | 0.0 | 0 | 0.0 | 0 | 0.0 | 0 | 0.0 | 0 | 0.0 | 0 | 0.0 | 0 | 0.0 | 0 | 0.0 | 0 | 0.0 | 0 | |
| | 2015 - 16 | 0 | 0 | 0.0 | 0 | 0.0 | 0 | 0.0 | 0 | 0.0 | 0 | 0.0 | 0 | 0.0 | 0 | 0.0 | 0 | 0.0 | 0 | 0.0 | 0 | |
| | 2016 - 17 | 0 | 0 | 0.0 | 0 | 0.0 | 0 | 0.0 | 0 | 0.0 | 0 | 0.0 | 0 | 0.0 | 0 | 0.0 | 0 | 0.0 | 0 | 0.0 | 0 | |

Note: Each row represents a fiscal year, beginning with Summer term and ending with Spring.

Degrees Conferred by Race/Ethnicity

Political Science

Fall 2013 - Fall 2017



Notes: 1) URM stands for Under-Represented Minority and includes American Indian or Alaska Native; Black or African-American; Hispanic / Latino race/ethnicity groups

2) Individual URM groups, Native Hawaiian Pacific Islander, Two or More Races, and Other race/ethnicity categories left off this charts due to relatively low numbers

Degrees Conferred

by Gender

Political Science

Fall 2013 - Fall 2017

| | | Total | Male | | Female | | Not Reported |
|----------------------------------|-----------|-------|-------|-------|--------|------|--------------|
| | | | Count | % | Count | % | |
| All | 2012 - 13 | 4 | 2 | 50.0 | 2 | 50.0 | 0 |
| | 2013 - 14 | 8 | 4 | 50.0 | 4 | 50.0 | 0 |
| | 2014 - 15 | 13 | 6 | 46.2 | 7 | 53.8 | 0 |
| | 2015 - 16 | 9 | 5 | 55.6 | 4 | 44.4 | 0 |
| | 2016 - 17 | 6 | 4 | 66.7 | 2 | 33.3 | 0 |
| Masters & IBHE Certificate | 2012 - 13 | 2 | 1 | 50.0 | 1 | 50.0 | 0 |
| | 2013 - 14 | 4 | 1 | 25.0 | 3 | 75.0 | 0 |
| | 2014 - 15 | 7 | 2 | 28.6 | 5 | 71.4 | 0 |
| | 2015 - 16 | 9 | 5 | 55.6 | 4 | 44.4 | 0 |
| | 2016 - 17 | 3 | 3 | 100.0 | 0 | 0.0 | 0 |
| Doctorate | 2012 - 13 | 2 | 1 | 50.0 | 1 | 50.0 | 0 |
| | 2013 - 14 | 4 | 3 | 75.0 | 1 | 25.0 | 0 |
| | 2014 - 15 | 6 | 4 | 66.7 | 2 | 33.3 | 0 |
| | 2015 - 16 | 0 | 0 | 0.0 | 0 | 0.0 | 0 |
| | 2016 - 17 | 3 | 1 | 33.3 | 2 | 66.7 | 0 |
| Campus Certificates | 2012 - 13 | 0 | 0 | 0.0 | 0 | 0.0 | 0 |
| | 2013 - 14 | 0 | 0 | 0.0 | 0 | 0.0 | 0 |
| | 2014 - 15 | 0 | 0 | 0.0 | 0 | 0.0 | 0 |
| | 2015 - 16 | 0 | 0 | 0.0 | 0 | 0.0 | 0 |
| | 2016 - 17 | 0 | 0 | 0.0 | 0 | 0.0 | 0 |

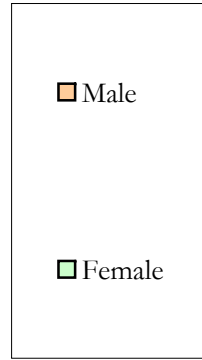
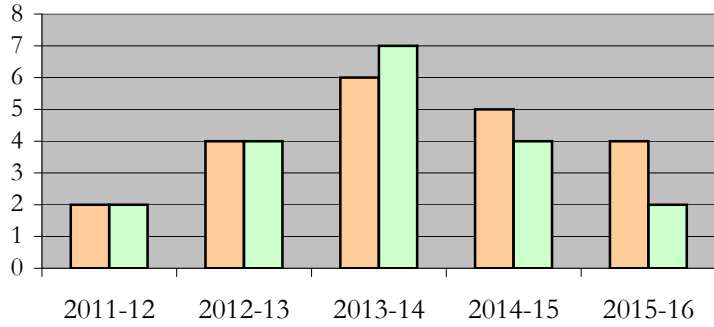
Note: Each row represents a fiscal year, beginning with Summer term and ending with Spring.

Degrees Conferred by Gender

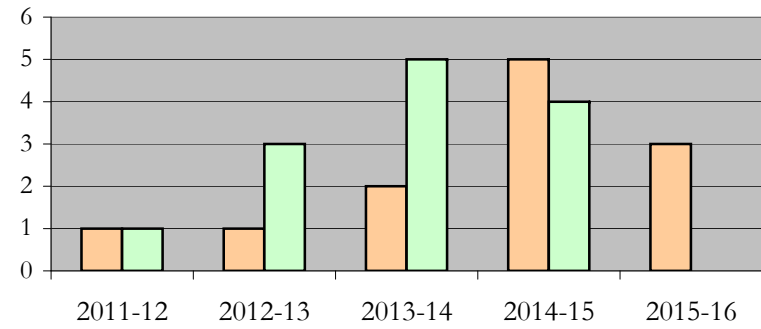
Political Science

Fall 2013 - Fall 2017

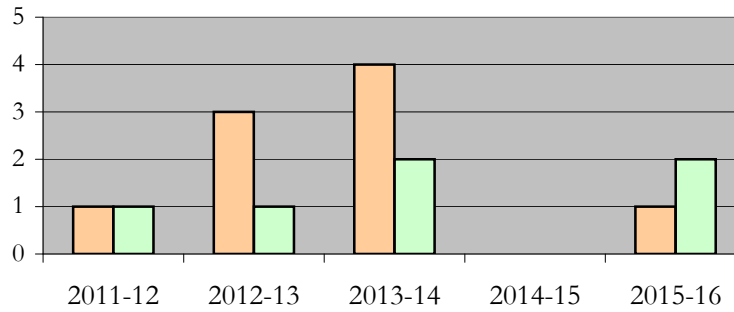
All Students



Masters & IBHE Certificate Students



Doctorate Students



Appendix A

Political Science

Fall 2013 - Fall 2017

List of program codes included in this document

20FS0343PHD

20FS0343MA

Notes: 1) Program codes are sorted by alphabetical order in column-wise fashion

2) Program codes highlighted in yellow did not have applications, enrollment, nor degrees conferred in the covered period