

Matriculation

Diversity Pipeline

Physics

Fall 2013 - Fall 2017

	Fall Semester Year	Applied					Admitted					Non-URM Admitted to Applied Yield %	URM Admitted to Applied Yield %	New Enrollment					Non-URM Enrolled to Admitted Yield %	URM Enrolled to Admitted Yield %	Total Enrollment				
		Grand Total	Non-URM Total		URM Total		Grand Total	Non-URM Total		URM Total				Grand Total	Non-URM Total		URM Total				Grand Total	Non-URM Total		URM Total	
			Count	%	Count	%		Count	%	Count	%				Count	%	Count	%				Count	%	Count	%
All	2013	184	174	94.6%	10	5.4%	42	42	100.0%	0	0.0%	24.1%	0.0%	12	12	100.0%	0	0.0%	28.6%	0.0%	77	77	100.0%	0	0.0%
	2014	184	176	95.7%	8	4.3%	40	40	100.0%	0	0.0%	22.7%	0.0%	16	16	100.0%	0	0.0%	40.0%	0.0%	84	83	98.8%	1	1.2%
	2015	200	195	97.5%	5	2.5%	31	30	96.8%	1	3.2%	15.4%	20.0%	12	12	100.0%	0	0.0%	40.0%	0.0%	80	79	98.8%	1	1.3%
	2016	180	166	92.2%	14	7.8%	33	32	97.0%	1	3.0%	19.3%	7.1%	9	9	100.0%	0	0.0%	28.1%	0.0%	79	78	98.7%	1	1.3%
	2017	149	141	94.6%	8	5.4%	38	37	97.4%	1	2.6%	26.2%	12.5%	10	9	90.0%	1	10.0%	24.3%	100.0%	82	80	97.6%	2	2.4%
	Average	179	170	95.0%	9	5.0%	37	36	98.4%	1	1.6%	21.2%	6.7%	12	12	98.3%	0	1.7%	32.0%	33.3%	80	79	98.8%	1	1.2%
Masters & IBHE Certificate	2013	33	30	90.9%	3	9.1%	5	5	100.0%	0	0.0%	16.7%	0.0%	2	2	100.0%	0	0.0%	40.0%	0.0%	11	11	100.0%	0	0.0%
	2014	34	33	97.1%	1	2.9%	4	4	100.0%	0	0.0%	12.1%	0.0%	2	2	100.0%	0	0.0%	50.0%	0.0%	10	10	100.0%	0	0.0%
	2015	26	26	100.0%	0	0.0%	1	1	100.0%	0	0.0%	3.8%	0.0%	0	0	0.0%	0	0.0%	0.0%	0.0%	7	7	100.0%	0	0.0%
	2016	15	11	73.3%	4	26.7%	0	0	0.0%	0	0.0%	0.0%	0.0%	0	0	0.0%	0	0.0%	0.0%	0.0%	8	8	100.0%	0	0.0%
	2017	20	20	100.0%	0	0.0%	3	3	100.0%	0	0.0%	15.0%	0.0%	2	2	100.0%	0	0.0%	66.7%	0.0%	8	8	100.0%	0	0.0%
	Average	26	24	93.8%	2	6.3%	3	3	100.0%	0	0.0%	10.8%	0.0%	1	1	100.0%	0	0.0%	46.2%	0.0%	9	9	100.0%	0	0.0%
Doctorate	2013	151	144	95.4%	7	4.6%	37	37	100.0%	0	0.0%	25.7%	0.0%	10	10	100.0%	0	0.0%	27.0%	0.0%	66	66	100.0%	0	0.0%
	2014	150	143	95.3%	7	4.7%	36	36	100.0%	0	0.0%	25.2%	0.0%	14	14	100.0%	0	0.0%	38.9%	0.0%	74	73	98.6%	1	1.4%
	2015	174	169	97.1%	5	2.9%	30	29	96.7%	1	3.3%	17.2%	20.0%	12	12	100.0%	0	0.0%	41.4%	0.0%	73	72	98.6%	1	1.4%
	2016	165	155	93.9%	10	6.1%	33	32	97.0%	1	3.0%	20.6%	10.0%	9	9	100.0%	0	0.0%	28.1%	0.0%	71	70	98.6%	1	1.4%
	2017	129	121	93.8%	8	6.2%	35	34	97.1%	1	2.9%	28.1%	12.5%	8	7	87.5%	1	12.5%	20.6%	100.0%	74	72	97.3%	2	2.7%
	Average	154	146	95.2%	7	4.8%	34	34	98.2%	1	1.8%	23.0%	8.1%	11	10	98.1%	0	1.9%	31.0%	33.3%	72	71	98.6%	1	1.4%
Non-Degree & Campus Certificate	2013	0	0	0.0%	0	0.0%	0	0	0.0%	0	0.0%	0.0%	0.0%	0	0	0.0%	0	0.0%	0.0%	0.0%	0	0	0.0%	0	0.0%
	2014	0	0	0.0%	0	0.0%	0	0	0.0%	0	0.0%	0.0%	0.0%	0	0	0.0%	0	0.0%	0.0%	0.0%	0	0	0.0%	0	0.0%
	2015	0	0	0.0%	0	0.0%	0	0	0.0%	0	0.0%	0.0%	0.0%	0	0	0.0%	0	0.0%	0.0%	0.0%	0	0	0.0%	0	0.0%
	2016	0	0	0.0%	0	0.0%	0	0	0.0%	0	0.0%	0.0%	0.0%	0	0	0.0%	0	0.0%	0.0%	0.0%	0	0	0.0%	0	0.0%
	2017	0	0	0.0%	0	0.0%	0	0	0.0%	0	0.0%	0.0%	0.0%	0	0	0.0%	0	0.0%	0.0%	0.0%	0	0	0.0%	0	0.0%
	Average	0	0	0.0%	0	0.0%	0	0	0.0%	0	0.0%	0.0%	0.0%	0	0	0.0%	0	0.0%	0.0%	0.0%	0	0	0.0%	0	0.0%

Note: URM stands for Under-Represented Minority and includes American Indian or Alaska Native; Black or African-American; Hispanic / Latino race/ethnicity groups

**Applications - Total
by Race/Ethnicity**

Physics

Fall 2013 - Fall 2017

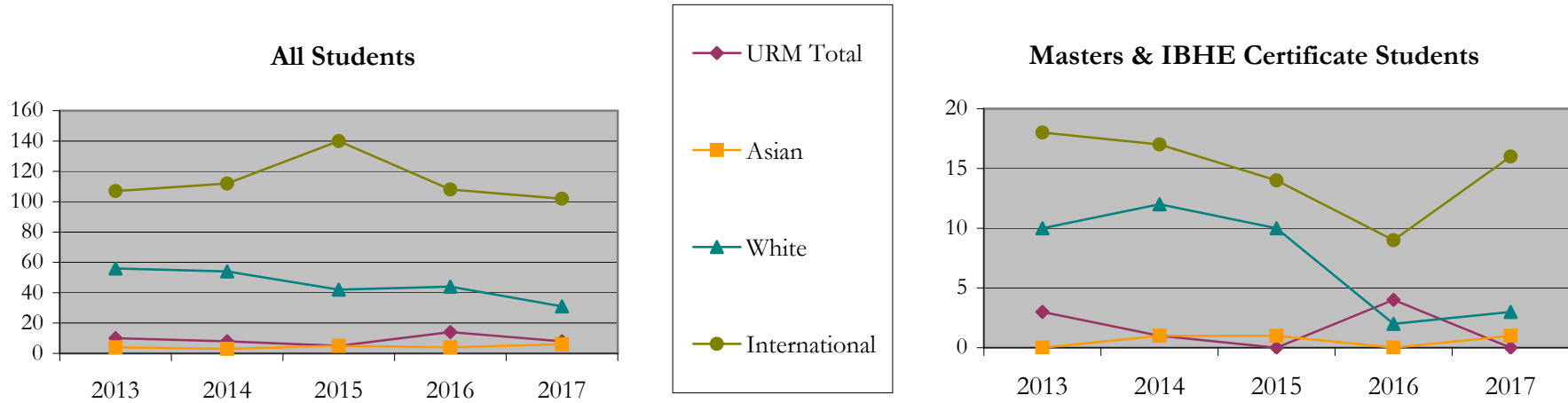
		Total	Under Represented Minorities (URM)																Not Reported		
			American Indian or Alaska Native		Black or African American		Hispanic / Latino		URM Total		Asian		Native Hawaiian or Pacific Islander		White		Two or More Races			International	
			Count	%	Count	%	Count	%	Count	%	Count	%	Count	%	Count	%	Count	%		Count	%
All	2013	184	0	0.0	3	1.6	7	3.8	10	5.4	4	2.2	0	0.0	56	30.4	4	2.2	107	58.2	3
	2014	184	1	0.5	3	1.6	4	2.2	8	4.3	3	1.6	0	0.0	54	29.3	1	0.5	112	60.9	6
	2015	200	0	0.0	0	0.0	5	2.5	5	2.5	5	2.5	0	0.0	42	21.0	3	1.5	140	70.0	5
	2016	180	0	0.0	5	2.8	9	5.0	14	7.8	4	2.2	0	0.0	44	24.4	1	0.6	108	60.0	9
	2017	149	0	0.0	1	0.7	7	4.7	8	5.4	6	4.0	0	0.0	31	20.8	1	0.7	102	68.5	1
Masters & IBHE Certificate	2013	33	0	0.0	1	3.0	2	6.1	3	9.1	0	0.0	0	0.0	10	30.3	2	6.1	18	54.5	0
	2014	34	0	0.0	1	2.9	0	0.0	1	2.9	1	2.9	0	0.0	12	35.3	0	0.0	17	50.0	3
	2015	26	0	0.0	0	0.0	0	0.0	0	0.0	1	3.8	0	0.0	10	38.5	0	0.0	14	53.8	1
	2016	15	0	0.0	2	13.3	2	13.3	4	26.7	0	0.0	0	0.0	2	13.3	0	0.0	9	60.0	0
	2017	20	0	0.0	0	0.0	0	0.0	0	0.0	1	5.0	0	0.0	3	15.0	0	0.0	16	80.0	0
Doctorate	2013	151	0	0.0	2	1.3	5	3.3	7	4.6	4	2.6	0	0.0	46	30.5	2	1.3	89	58.9	3
	2014	150	1	0.7	2	1.3	4	2.7	7	4.7	2	1.3	0	0.0	42	28.0	1	0.7	95	63.3	3
	2015	174	0	0.0	0	0.0	5	2.9	5	2.9	4	2.3	0	0.0	32	18.4	3	1.7	126	72.4	4
	2016	165	0	0.0	3	1.8	7	4.2	10	6.1	4	2.4	0	0.0	42	25.5	1	0.6	99	60.0	9
	2017	129	0	0.0	1	0.8	7	5.4	8	6.2	5	3.9	0	0.0	28	21.7	1	0.8	86	66.7	1
Non-Degree & Campus Certificate	2013	0	0	0.0	0	0.0	0	0.0	0	0.0	0	0.0	0	0.0	0	0.0	0	0.0	0	0.0	0
	2014	0	0	0.0	0	0.0	0	0.0	0	0.0	0	0.0	0	0.0	0	0.0	0	0.0	0	0.0	0
	2015	0	0	0.0	0	0.0	0	0.0	0	0.0	0	0.0	0	0.0	0	0.0	0	0.0	0	0.0	0
	2016	0	0	0.0	0	0.0	0	0.0	0	0.0	0	0.0	0	0.0	0	0.0	0	0.0	0	0.0	0
	2017	0	0	0.0	0	0.0	0	0.0	0	0.0	0	0.0	0	0.0	0	0.0	0	0.0	0	0.0	0

Note: URM stands for Under-Represented Minority and includes American Indian or Alaska Native; Black or African-American; Hispanic / Latino race/ethnicity groups

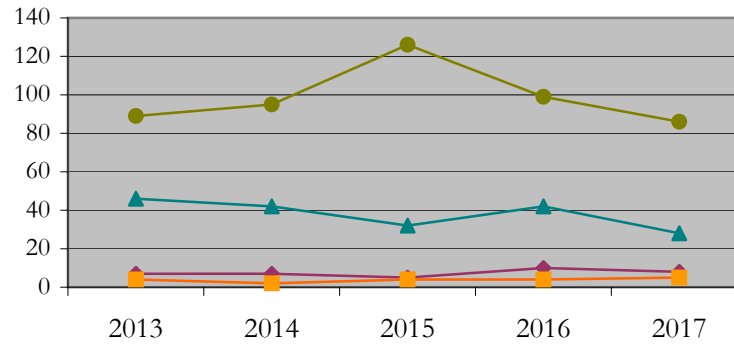
Applications - Total by Race/Ethnicity

Physics

Fall 2013 - Fall 2017



Doctorate Students



Notes: 1) URM stands for Under-Represented Minority and includes American Indian or Alaska Native; Black or African-American; Hispanic / Latino race/ethnicity groups

2) Individual URM groups, Native Hawaiian Pacific Islander, Two or More Races, and Other race/ethnicity categories left off this charts due to relatively low numbers

**Applications - Admitted
by Race/Ethnicity**

Physics

Fall 2013 - Fall 2017

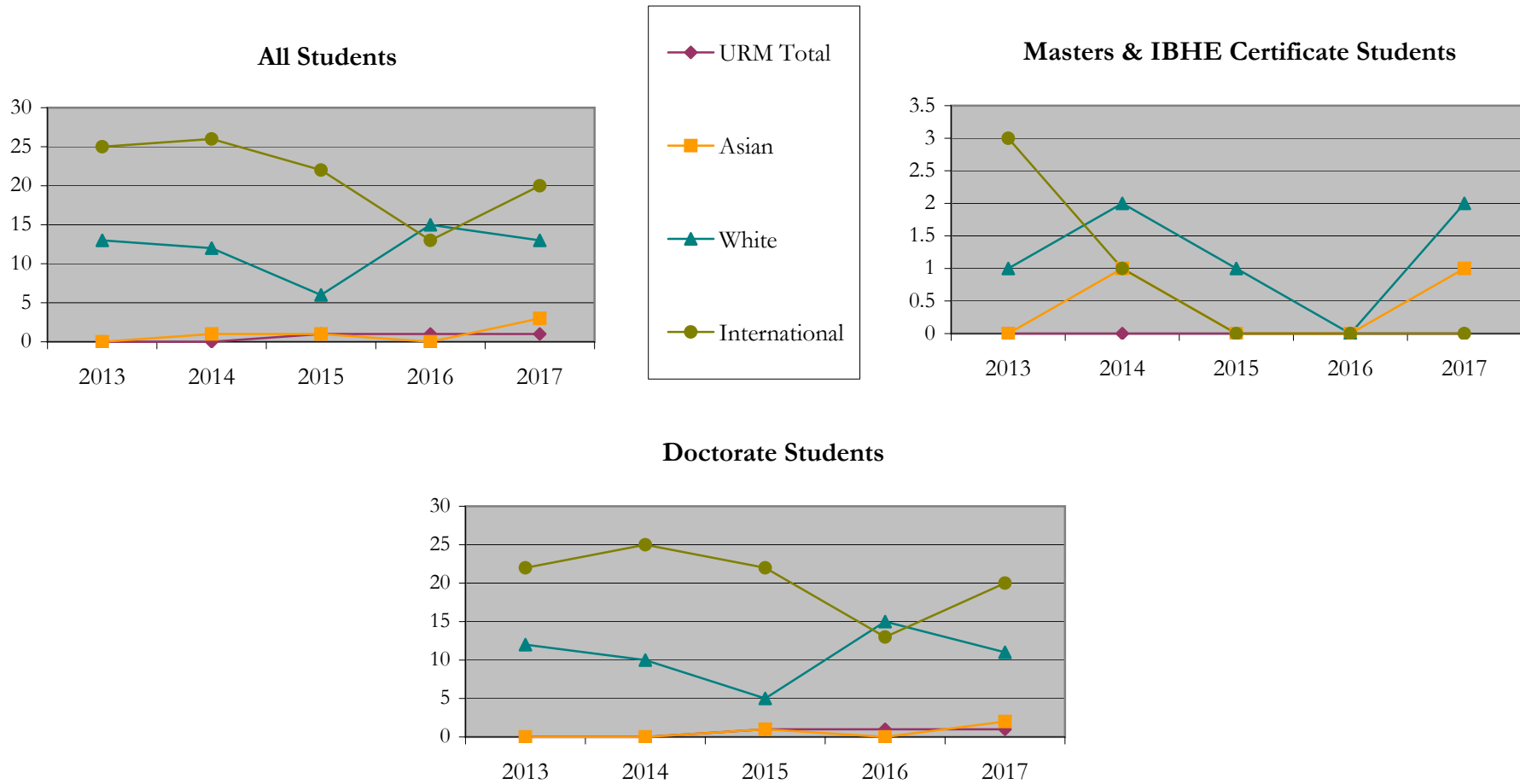
		Total	Under Represented Minorities (URM)								Asian		Native Hawaiian or Pacific Islander		White		Two or More Races		International		Not Reported
			American Indian or Alaska Native		Black or African American		Hispanic / Latino		URM Total												
			Count	%	Count	%	Count	%	Count	%											
All	2013	42	0	0.0	0	0.0	0	0.0	0	0.0	0	0.0	0	0.0	13	31.0	3	7.1	25	59.5	1
	2014	40	0	0.0	0	0.0	0	0.0	0	0.0	1	2.5	0	0.0	12	30.0	1	2.5	26	65.0	0
	2015	31	0	0.0	0	0.0	1	3.2	1	3.2	1	3.2	0	0.0	6	19.4	0	0.0	22	71.0	1
	2016	33	0	0.0	0	0.0	1	3.0	1	3.0	0	0.0	0	0.0	15	45.5	1	3.0	13	39.4	3
	2017	38	0	0.0	0	0.0	1	2.6	1	2.6	3	7.9	0	0.0	13	34.2	0	0.0	20	52.6	1
Masters & IBHE Certificate	2013	5	0	0.0	0	0.0	0	0.0	0	0.0	0	0.0	0	0.0	1	20.0	1	20.0	3	60.0	0
	2014	4	0	0.0	0	0.0	0	0.0	0	0.0	1	25.0	0	0.0	2	50.0	0	0.0	1	25.0	0
	2015	1	0	0.0	0	0.0	0	0.0	0	0.0	0	0.0	0	0.0	1	100.0	0	0.0	0	0.0	0
	2016	0	0	0.0	0	0.0	0	0.0	0	0.0	0	0.0	0	0.0	0	0.0	0	0.0	0	0.0	0
	2017	3	0	0.0	0	0.0	0	0.0	0	0.0	1	33.3	0	0.0	2	66.7	0	0.0	0	0.0	0
Doctorate	2013	37	0	0.0	0	0.0	0	0.0	0	0.0	0	0.0	0	0.0	12	32.4	2	5.4	22	59.5	1
	2014	36	0	0.0	0	0.0	0	0.0	0	0.0	0	0.0	0	0.0	10	27.8	1	2.8	25	69.4	0
	2015	30	0	0.0	0	0.0	1	3.3	1	3.3	1	3.3	0	0.0	5	16.7	0	0.0	22	73.3	1
	2016	33	0	0.0	0	0.0	1	3.0	1	3.0	0	0.0	0	0.0	15	45.5	1	3.0	13	39.4	3
	2017	35	0	0.0	0	0.0	1	2.9	1	2.9	2	5.7	0	0.0	11	31.4	0	0.0	20	57.1	1
Non-Degree & Campus Certificate	2013	0	0	0.0	0	0.0	0	0.0	0	0.0	0	0.0	0	0.0	0	0.0	0	0.0	0	0.0	0
	2014	0	0	0.0	0	0.0	0	0.0	0	0.0	0	0.0	0	0.0	0	0.0	0	0.0	0	0.0	0
	2015	0	0	0.0	0	0.0	0	0.0	0	0.0	0	0.0	0	0.0	0	0.0	0	0.0	0	0.0	0
	2016	0	0	0.0	0	0.0	0	0.0	0	0.0	0	0.0	0	0.0	0	0.0	0	0.0	0	0.0	0
	2017	0	0	0.0	0	0.0	0	0.0	0	0.0	0	0.0	0	0.0	0	0.0	0	0.0	0	0.0	0

Note: URM stands for Under-Represented Minority and includes American Indian or Alaska Native; Black or African-American; Hispanic / Latino race/ethnicity groups

Applications - Admitted by Race/Ethnicity

Physics

Fall 2013 - Fall 2017



Notes: 1) URM stands for Under-Represented Minority and includes American Indian or Alaska Native; Black or African-American; Hispanic / Latino race/ethnicity groups

2) Individual URM groups, Native Hawaiian Pacific Islander, Two or More Races, and Other race/ethnicity categories left off this charts due to relatively low numbers

**Enrollment - New
by Race/Ethnicity**

Physics

Fall 2013 - Fall 2017

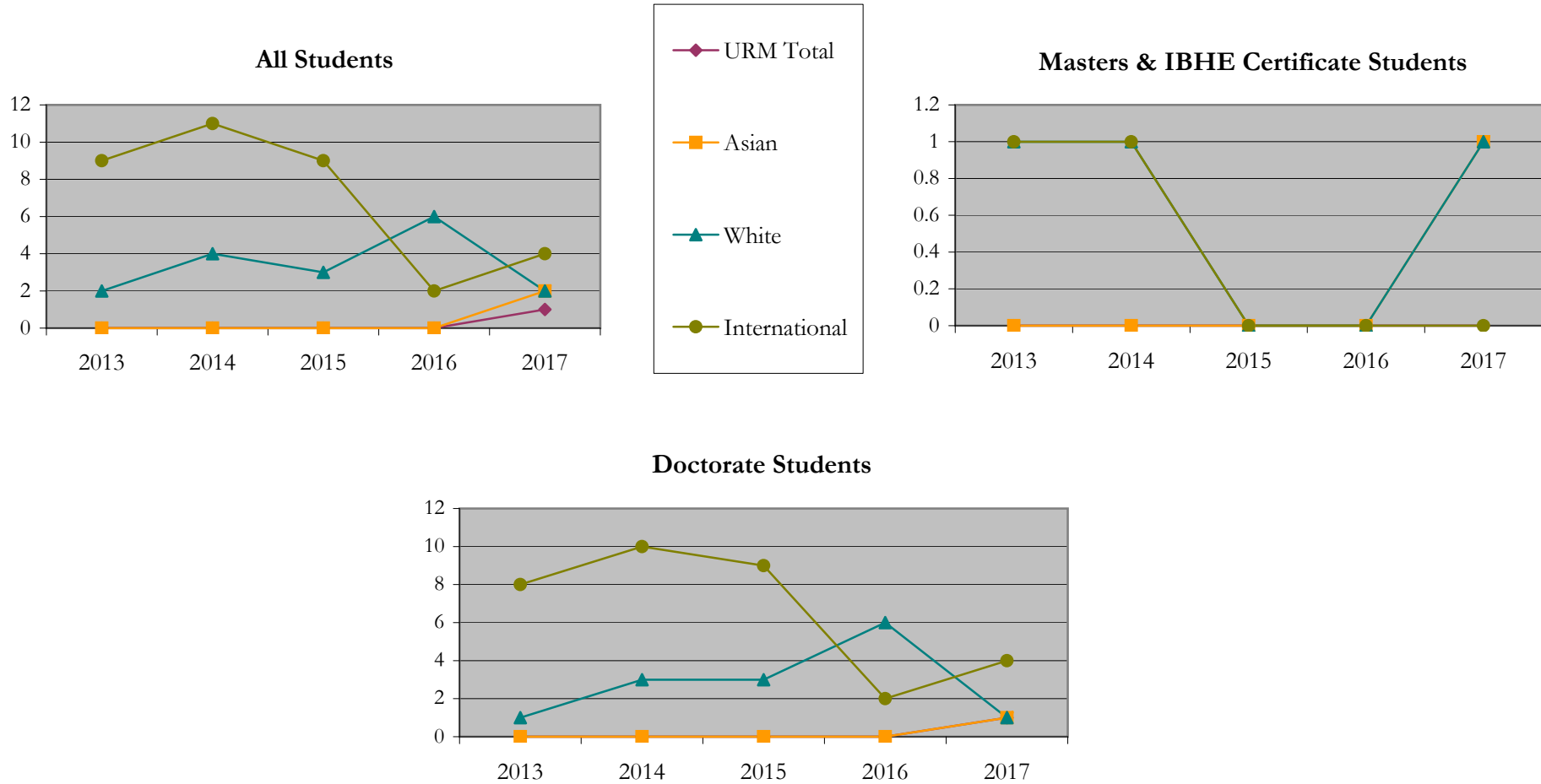
		Total	Under Represented Minorities (URM)								Asian		Native Hawaiian or Pacific Islander		White		Two or More Races		International		Not Reported
			American Indian or Alaska Native		Black or African American		Hispanic / Latino		URM Total												
			Count	%	Count	%	Count	%	Count	%											
All	2013	12	0	0.0	0	0.0	0	0.0	0	0.0	0	0.0	0	0.0	2	16.7	1	8.3	9	75.0	0
	2014	16	0	0.0	0	0.0	0	0.0	0	0.0	0	0.0	0	0.0	4	25.0	1	6.3	11	68.8	0
	2015	12	0	0.0	0	0.0	0	0.0	0	0.0	0	0.0	0	0.0	3	25.0	0	0.0	9	75.0	0
	2016	9	0	0.0	0	0.0	0	0.0	0	0.0	0	0.0	0	0.0	6	66.7	1	11.1	2	22.2	0
	2017	10	0	0.0	0	0.0	1	10.0	1	10.0	2	20.0	0	0.0	2	20.0	0	0.0	4	40.0	1
Masters & IBHE Certificate	2013	2	0	0.0	0	0.0	0	0.0	0	0.0	0	0.0	0	0.0	1	50.0	0	0.0	1	50.0	0
	2014	2	0	0.0	0	0.0	0	0.0	0	0.0	0	0.0	0	0.0	1	50.0	0	0.0	1	50.0	0
	2015	0	0	0.0	0	0.0	0	0.0	0	0.0	0	0.0	0	0.0	0	0.0	0	0.0	0	0.0	0
	2016	0	0	0.0	0	0.0	0	0.0	0	0.0	0	0.0	0	0.0	0	0.0	0	0.0	0	0.0	0
	2017	2	0	0.0	0	0.0	0	0.0	0	0.0	1	50.0	0	0.0	1	50.0	0	0.0	0	0.0	0
Doctorate	2013	10	0	0.0	0	0.0	0	0.0	0	0.0	0	0.0	0	0.0	1	10.0	1	10.0	8	80.0	0
	2014	14	0	0.0	0	0.0	0	0.0	0	0.0	0	0.0	0	0.0	3	21.4	1	7.1	10	71.4	0
	2015	12	0	0.0	0	0.0	0	0.0	0	0.0	0	0.0	0	0.0	3	25.0	0	0.0	9	75.0	0
	2016	9	0	0.0	0	0.0	0	0.0	0	0.0	0	0.0	0	0.0	6	66.7	1	11.1	2	22.2	0
	2017	8	0	0.0	0	0.0	1	12.5	1	12.5	1	12.5	0	0.0	1	12.5	0	0.0	4	50.0	1
Non-Degree & Campus Certificate	2013	0	0	0.0	0	0.0	0	0.0	0	0.0	0	0.0	0	0.0	0	0.0	0	0.0	0	0.0	0
	2014	0	0	0.0	0	0.0	0	0.0	0	0.0	0	0.0	0	0.0	0	0.0	0	0.0	0	0.0	0
	2015	0	0	0.0	0	0.0	0	0.0	0	0.0	0	0.0	0	0.0	0	0.0	0	0.0	0	0.0	0
	2016	0	0	0.0	0	0.0	0	0.0	0	0.0	0	0.0	0	0.0	0	0.0	0	0.0	0	0.0	0
	2017	0	0	0.0	0	0.0	0	0.0	0	0.0	0	0.0	0	0.0	0	0.0	0	0.0	0	0.0	0

Note: URM stands for Under-Represented Minority and includes American Indian or Alaska Native; Black or African-American; Hispanic / Latino race/ethnicity groups

Enrollment - New by Race/Ethnicity

Physics

Fall 2013 - Fall 2017



Notes: 1) URM stands for Under-Represented Minority and includes American Indian or Alaska Native; Black or African-American; Hispanic / Latino race/ethnicity groups

2) Individual URM groups, Native Hawaiian Pacific Islander, Two or More Races, and Other race/ethnicity categories left off this charts due to relatively low numbers

**Enrollment - Total
by Race/Ethnicity**

Physics

Fall 2013 - Fall 2017

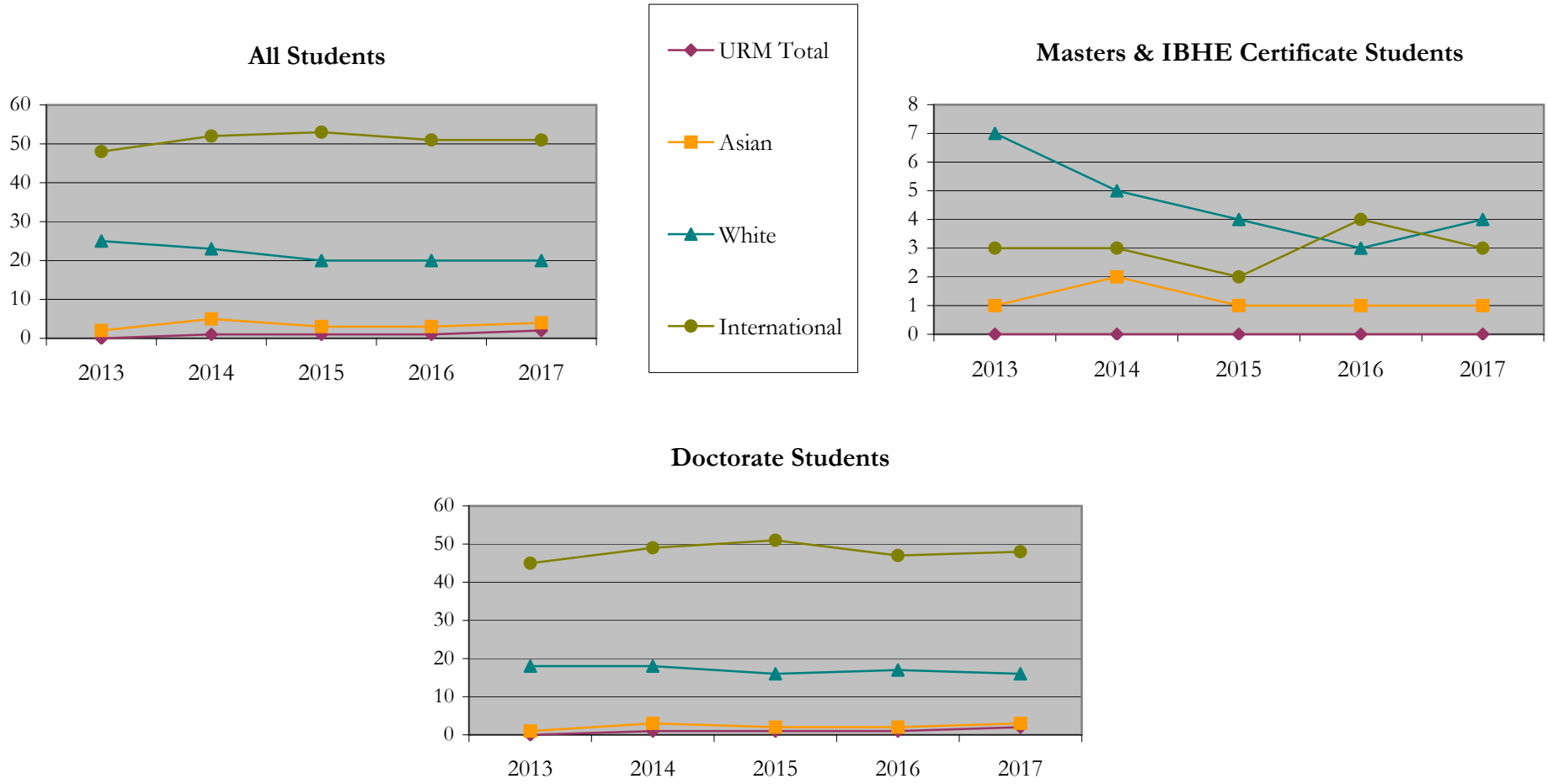
		Total	Under Represented Minorities (URM)								Asian		Native Hawaiian or Pacific Islander		White		Two or More Races		International		Not Reported
			American Indian or Alaska Native		Black or African American		Hispanic / Latino		URM Total												
			Count	%	Count	%	Count	%	Count	%											
All	2013	77	0	0.0	0	0.0	0	0.0	0	0.0	2	2.6	0	0.0	25	32.5	2	2.6	48	62.3	0
	2014	84	0	0.0	0	0.0	1	1.2	1	1.2	5	6.0	0	0.0	23	27.4	3	3.6	52	61.9	0
	2015	80	0	0.0	0	0.0	1	1.3	1	1.3	3	3.8	0	0.0	20	25.0	3	3.8	53	66.3	0
	2016	79	0	0.0	0	0.0	1	1.3	1	1.3	3	3.8	0	0.0	20	25.3	4	5.1	51	64.6	0
	2017	82	0	0.0	0	0.0	2	2.4	2	2.4	4	4.9	0	0.0	20	24.4	4	4.9	51	62.2	1
Masters & IBHE Certificate	2013	11	0	0.0	0	0.0	0	0.0	0	0.0	1	9.1	0	0.0	7	63.6	0	0.0	3	27.3	0
	2014	10	0	0.0	0	0.0	0	0.0	0	0.0	2	20.0	0	0.0	5	50.0	0	0.0	3	30.0	0
	2015	7	0	0.0	0	0.0	0	0.0	0	0.0	1	14.3	0	0.0	4	57.1	0	0.0	2	28.6	0
	2016	8	0	0.0	0	0.0	0	0.0	0	0.0	1	12.5	0	0.0	3	37.5	0	0.0	4	50.0	0
	2017	8	0	0.0	0	0.0	0	0.0	0	0.0	1	12.5	0	0.0	4	50.0	0	0.0	3	37.5	0
Doctorate	2013	66	0	0.0	0	0.0	0	0.0	0	0.0	1	1.5	0	0.0	18	27.3	2	3.0	45	68.2	0
	2014	74	0	0.0	0	0.0	1	1.4	1	1.4	3	4.1	0	0.0	18	24.3	3	4.1	49	66.2	0
	2015	73	0	0.0	0	0.0	1	1.4	1	1.4	2	2.7	0	0.0	16	21.9	3	4.1	51	69.9	0
	2016	71	0	0.0	0	0.0	1	1.4	1	1.4	2	2.8	0	0.0	17	23.9	4	5.6	47	66.2	0
	2017	74	0	0.0	0	0.0	2	2.7	2	2.7	3	4.1	0	0.0	16	21.6	4	5.4	48	64.9	1
Non-Degree & Campus Certificate	2013	0	0	0.0	0	0.0	0	0.0	0	0.0	0	0.0	0	0.0	0	0.0	0	0.0	0	0.0	0
	2014	0	0	0.0	0	0.0	0	0.0	0	0.0	0	0.0	0	0.0	0	0.0	0	0.0	0	0.0	0
	2015	0	0	0.0	0	0.0	0	0.0	0	0.0	0	0.0	0	0.0	0	0.0	0	0.0	0	0.0	0
	2016	0	0	0.0	0	0.0	0	0.0	0	0.0	0	0.0	0	0.0	0	0.0	0	0.0	0	0.0	0
	2017	0	0	0.0	0	0.0	0	0.0	0	0.0	0	0.0	0	0.0	0	0.0	0	0.0	0	0.0	0

Note: URM stands for Under-Represented Minority and includes American Indian or Alaska Native; Black or African-American; Hispanic / Latino race/ethnicity groups

Enrollment - Total by Race/Ethnicity

Physics

Fall 2013 - Fall 2017



Notes: 1) URM stands for Under-Represented Minority and includes American Indian or Alaska Native; Black or African-American; Hispanic / Latino race/ethnicity groups

2) Individual URM groups, Native Hawaiian Pacific Islander, Two or More Races, and Other race/ethnicity categories left off this charts due to relatively low numbers

Enrollment
by Student Type, Enrollment Time, and Gender

Physics

Fall 2013 - Fall 2017

		Total	New		Continuing		Male		Female		Gender Not Reported	Part-time		Full-time	
			Count	%	Count	%	Count	%	Count	%		Count	%	Count	%
All	2013	77	12	15.6	65	84.4	59	76.6	18	23.4	0	7	9.1	70	90.9
	2014	84	16	19.0	68	81.0	62	73.8	22	26.2	0	9	10.7	75	89.3
	2015	80	12	15.0	68	85.0	58	72.5	22	27.5	0	8	10.0	72	90.0
	2016	79	9	11.4	70	88.6	55	69.6	24	30.4	0	5	6.3	74	93.7
	2017	82	10	12.2	72	87.8	60	73.2	22	26.8	0	9	11.0	73	89.0
Masters & IBHE Certificate	2013	11	2	18.2	9	81.8	8	72.7	3	27.3	0	1	9.1	10	90.9
	2014	10	2	20.0	8	80.0	7	70.0	3	30.0	0	1	10.0	9	90.0
	2015	7	0	0.0	7	100.0	5	71.4	2	28.6	0	2	28.6	5	71.4
	2016	8	0	0.0	8	100.0	5	62.5	3	37.5	0	0	0.0	8	100.0
	2017	8	2	25.0	6	75.0	7	87.5	1	12.5	0	1	12.5	7	87.5
Doctorate	2013	66	10	15.2	56	84.8	51	77.3	15	22.7	0	6	9.1	60	90.9
	2014	74	14	18.9	60	81.1	55	74.3	19	25.7	0	8	10.8	66	89.2
	2015	73	12	16.4	61	83.6	53	72.6	20	27.4	0	6	8.2	67	91.8
	2016	71	9	12.7	62	87.3	50	70.4	21	29.6	0	5	7.0	66	93.0
	2017	74	8	10.8	66	89.2	53	71.6	21	28.4	0	8	10.8	66	89.2
Non-Degree & Campus Certificate	2013	0	0	0.0	0	0.0	0	0.0	0	0.0	0	0	0.0	0	0.0
	2014	0	0	0.0	0	0.0	0	0.0	0	0.0	0	0	0.0	0	0.0
	2015	0	0	0.0	0	0.0	0	0.0	0	0.0	0	0	0.0	0	0.0
	2016	0	0	0.0	0	0.0	0	0.0	0	0.0	0	0	0.0	0	0.0
	2017	0	0	0.0	0	0.0	0	0.0	0	0.0	0	0	0.0	0	0.0

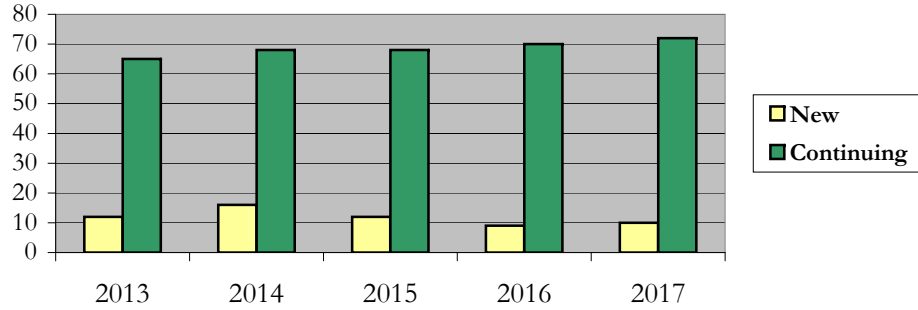
Enrollment

by Student Type, Enrollment Time, and Gender (All Students)

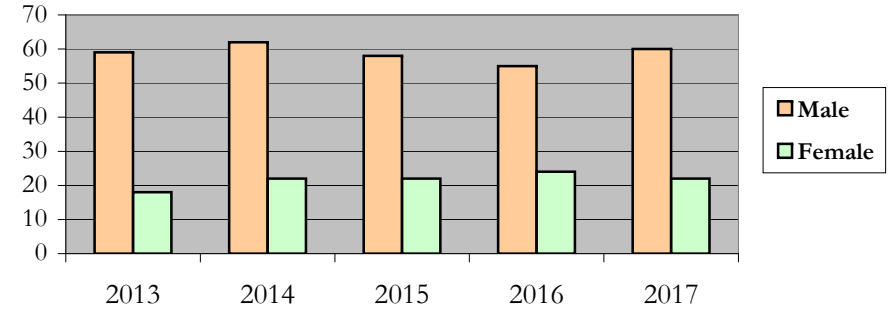
Physics

Fall 2013 - Fall 2017

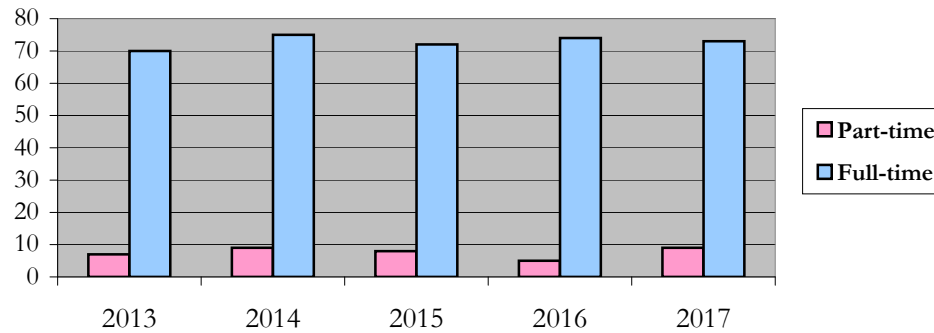
New and Continuing Enrollment



Enrollment by Gender



Enrollment by Student Enrollment Time



Enrollment
by Student Type, Enrollment Time, and Gender (Master's Students)

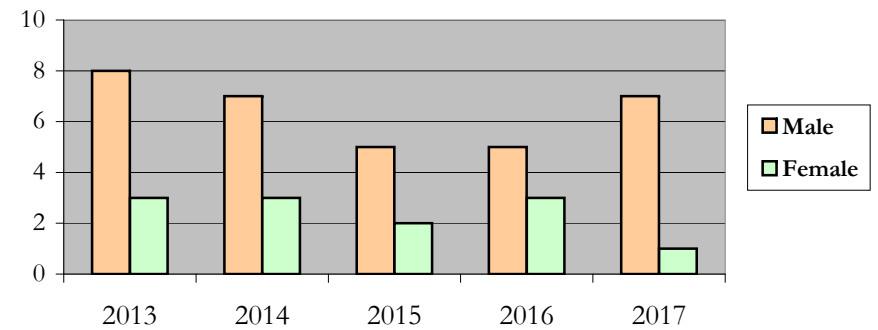
Physics

Fall 2013 - Fall 2017

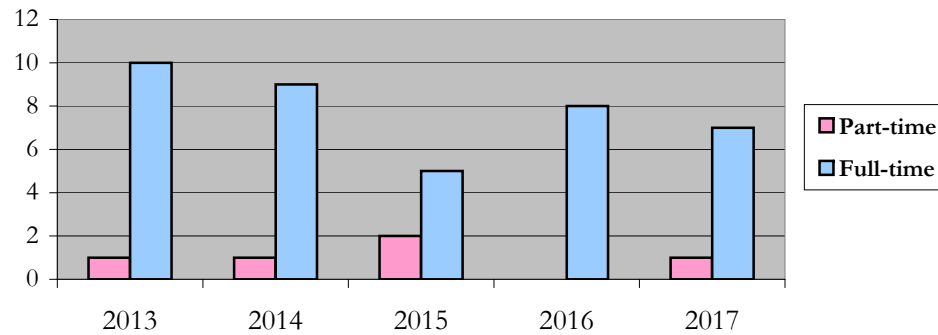
New and Continuing Enrollment



Enrollment by Gender



Enrollment by Student Enrollment Time



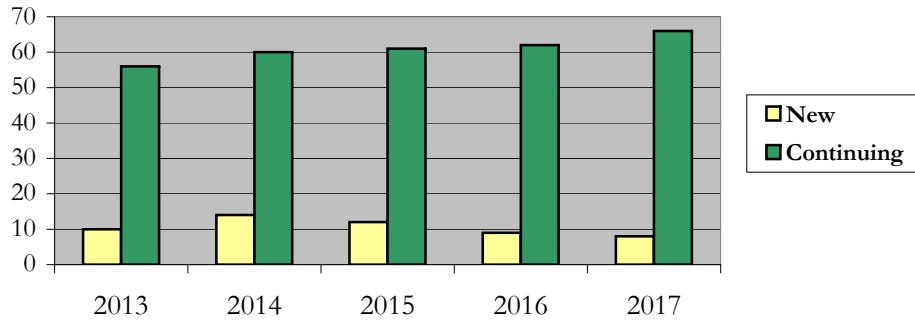
Enrollment

by Student Type, Enrollment Time, and Gender (Doctorate Students)

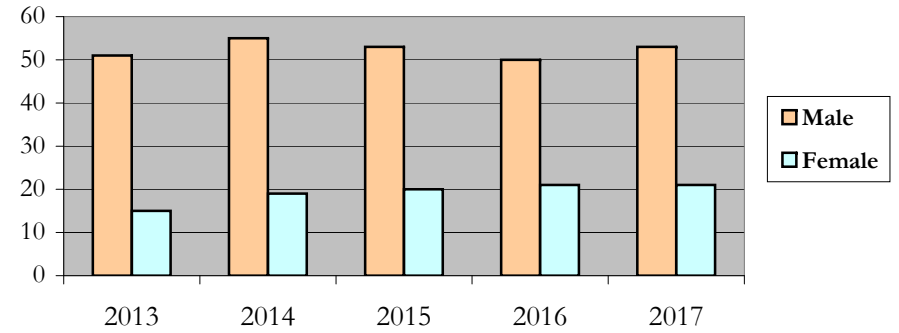
Physics

Fall 2013 - Fall 2017

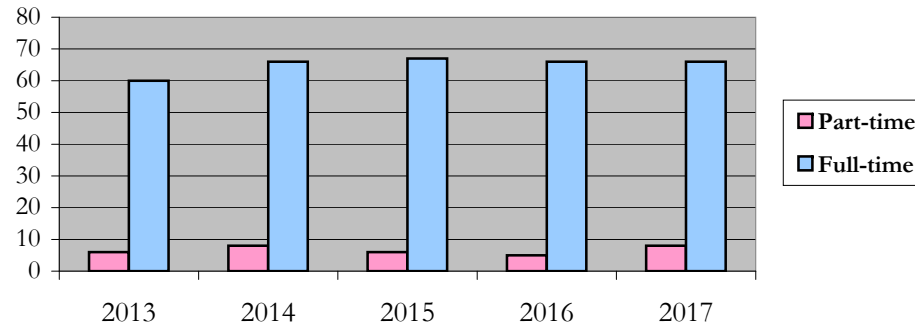
New and Continuing Enrollment



Enrollment by Gender



Enrollment by Student Enrollment Time



Degrees Conferred by Race/Ethnicity

Physics

Fall 2013 - Fall 2017

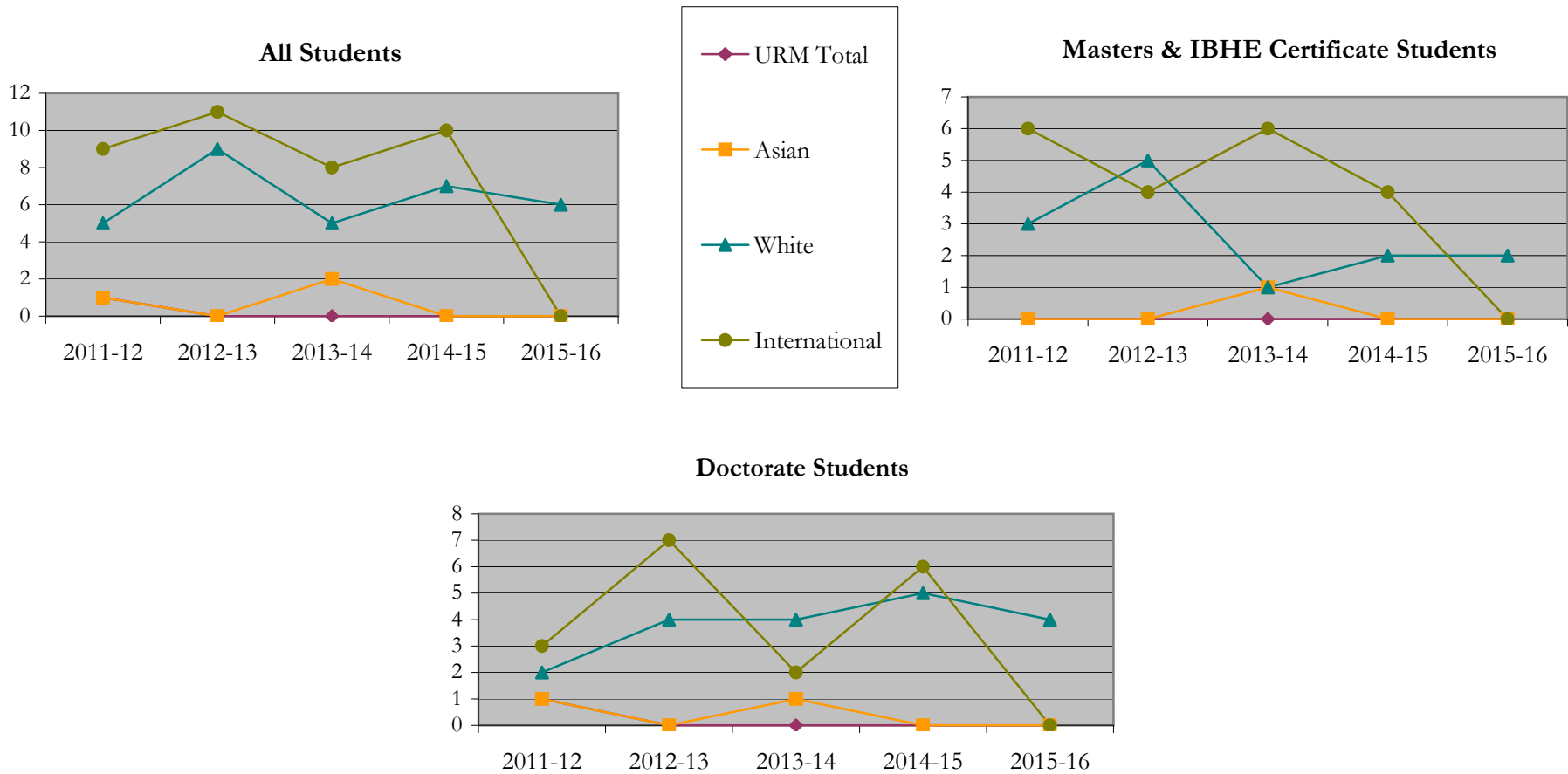
		Total	Under Represented Minorities (URM)								Asian	Native Hawaiian or Pacific Islander		White		Two or More Races		International		Not Reported	
			American Indian or Alaska Native		Black or African American		Hispanic / Latino		URM Total			Count	%	Count	%	Count	%	Count	%	Count	%
			Count	%	Count	%	Count	%	Count	%											
All	2012 - 13	17	0	0.0	0	0.0	1	5.9	1	5.9	1	5.9	0	0.0	5	29.4	0	0.0	9	52.9	1
	2013 - 14	20	0	0.0	0	0.0	0	0.0	0	0.0	0	0.0	0	0.0	9	45.0	0	0.0	11	55.0	0
	2014 - 15	15	0	0.0	0	0.0	0	0.0	0	0.0	2	13.3	0	0.0	5	33.3	0	0.0	8	53.3	0
	2015 - 16	17	0	0.0	0	0.0	0	0.0	0	0.0	0	0.0	0	0.0	7	41.2	0	0.0	10	58.8	0
	2016 - 17	8	0	0.0	0	0.0	0	0.0	0	0.0	0	0.0	0	0.0	6	75.0	2	25.0	0	0.0	0
Masters & IBHE Certificate	2012 - 13	9	0	0.0	0	0.0	0	0.0	0	0.0	0	0.0	0	0.0	3	33.3	0	0.0	6	66.7	0
	2013 - 14	9	0	0.0	0	0.0	0	0.0	0	0.0	0	0.0	0	0.0	5	55.6	0	0.0	4	44.4	0
	2014 - 15	8	0	0.0	0	0.0	0	0.0	0	0.0	1	12.5	0	0.0	1	12.5	0	0.0	6	75.0	0
	2015 - 16	6	0	0.0	0	0.0	0	0.0	0	0.0	0	0.0	0	0.0	2	33.3	0	0.0	4	66.7	0
	2016 - 17	4	0	0.0	0	0.0	0	0.0	0	0.0	0	0.0	0	0.0	2	50.0	2	50.0	0	0.0	0
Doctorate	2012 - 13	8	0	0.0	0	0.0	1	12.5	1	12.5	1	12.5	0	0.0	2	25.0	0	0.0	3	37.5	1
	2013 - 14	11	0	0.0	0	0.0	0	0.0	0	0.0	0	0.0	0	0.0	4	36.4	0	0.0	7	63.6	0
	2014 - 15	7	0	0.0	0	0.0	0	0.0	0	0.0	1	14.3	0	0.0	4	57.1	0	0.0	2	28.6	0
	2015 - 16	11	0	0.0	0	0.0	0	0.0	0	0.0	0	0.0	0	0.0	5	45.5	0	0.0	6	54.5	0
	2016 - 17	4	0	0.0	0	0.0	0	0.0	0	0.0	0	0.0	0	0.0	4	100.0	0	0.0	0	0.0	0
Non-Degree & Campus Certificate	2012 - 13	0	0	0.0	0	0.0	0	0.0	0	0.0	0	0.0	0	0.0	0	0.0	0	0.0	0	0.0	0
	2013 - 14	0	0	0.0	0	0.0	0	0.0	0	0.0	0	0.0	0	0.0	0	0.0	0	0.0	0	0.0	0
	2014 - 15	0	0	0.0	0	0.0	0	0.0	0	0.0	0	0.0	0	0.0	0	0.0	0	0.0	0	0.0	0
	2015 - 16	0	0	0.0	0	0.0	0	0.0	0	0.0	0	0.0	0	0.0	0	0.0	0	0.0	0	0.0	0
	2016 - 17	0	0	0.0	0	0.0	0	0.0	0	0.0	0	0.0	0	0.0	0	0.0	0	0.0	0	0.0	0

Note: Each row represents a fiscal year, beginning with Summer term and ending with Spring.

Degrees Conferred by Race/Ethnicity

Physics

Fall 2013 - Fall 2017



Notes: 1) URM stands for Under-Represented Minority and includes American Indian or Alaska Native; Black or African-American; Hispanic / Latino race/ethnicity groups

2) Individual URM groups, Native Hawaiian Pacific Islander, Two or More Races, and Other race/ethnicity categories left off this charts due to relatively low numbers

Degrees Conferred
by Gender

Physics

Fall 2013 - Fall 2017

		Total	Male		Female		Not Reported
			Count	%	Count	%	
All	2012 - 13	17	11	64.7	6	35.3	0
	2013 - 14	20	14	70.0	6	30.0	0
	2014 - 15	15	14	93.3	1	6.7	0
	2015 - 16	17	12	70.6	5	29.4	0
	2016 - 17	8	7	87.5	1	12.5	0
Masters & IBHE Certificate	2012 - 13	9	5	55.6	4	44.4	0
	2013 - 14	9	6	66.7	3	33.3	0
	2014 - 15	8	7	87.5	1	12.5	0
	2015 - 16	6	5	83.3	1	16.7	0
	2016 - 17	4	4	100.0	0	0.0	0
Doctorate	2012 - 13	8	6	75.0	2	25.0	0
	2013 - 14	11	8	72.7	3	27.3	0
	2014 - 15	7	7	100.0	0	0.0	0
	2015 - 16	11	7	63.6	4	36.4	0
	2016 - 17	4	3	75.0	1	25.0	0
Campus Certificates	2012 - 13	0	0	0.0	0	0.0	0
	2013 - 14	0	0	0.0	0	0.0	0
	2014 - 15	0	0	0.0	0	0.0	0
	2015 - 16	0	0	0.0	0	0.0	0
	2016 - 17	0	0	0.0	0	0.0	0

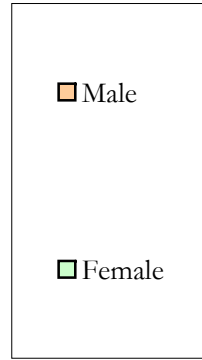
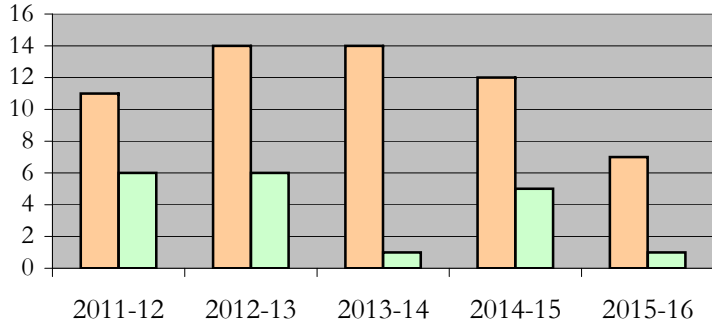
Note: Each row represents a fiscal year, beginning with Summer term and ending with Spring.

Degrees Conferred by Gender

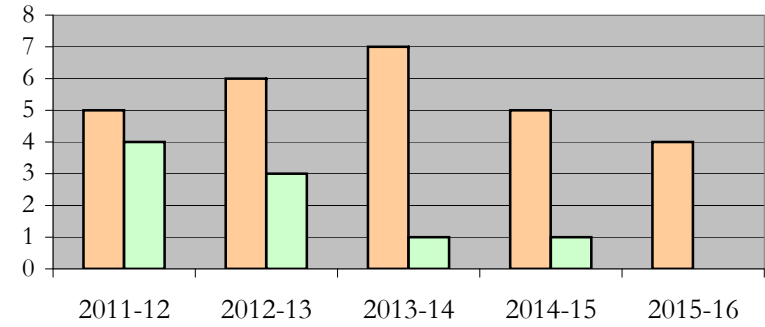
Physics

Fall 2013 - Fall 2017

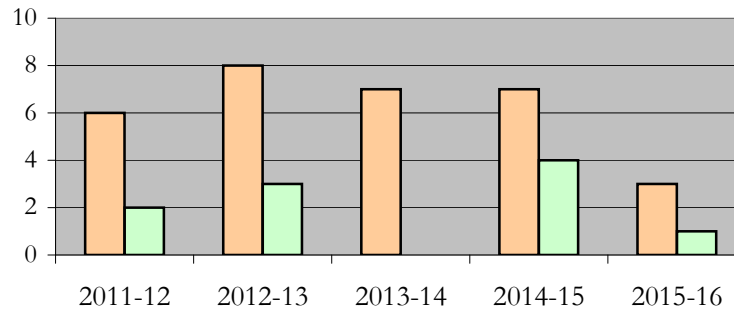
All Students



Masters & IBHE Certificate Students



Doctorate Students



Appendix A

Physics

Fall 2013 - Fall 2017

List of program codes included in this document

20FS0240PHD

20FS0240MS

Notes: 1) Program codes are sorted by alphabetical order in column-wise fashion

2) Program codes highlighted in yellow did not have applications, enrollment, nor degrees conferred in the covered period