

# Matriculation

## Diversity Pipeline

Mathematics

Fall 2013 - Fall 2017

	Fall Semester Year	Applied					Admitted					Non-URM Admitted to Applied Yield %	URM Admitted to Applied Yield %	New Enrollment					Non-URM Enrolled to Admitted Yield %	URM Enrolled to Admitted Yield %	Total Enrollment				
		Grand Total	Non-URM Total		URM Total		Grand Total	Non-URM Total		URM Total				Grand Total	Non-URM Total		URM Total				Grand Total	Non-URM Total		URM Total	
			Count	%	Count	%		Count	%	Count	%				Count	%	Count	%				Count	%	Count	%
All	2013	237	224	94.5%	13	5.5%	56	53	94.6%	3	5.4%	23.7%	23.1%	28	27	96.4%	1	3.6%	50.9%	33.3%	135	127	94.1%	8	5.9%
	2014	194	188	96.9%	6	3.1%	60	58	96.7%	2	3.3%	30.9%	33.3%	21	20	95.2%	1	4.8%	34.5%	50.0%	141	133	94.3%	8	5.7%
	2015	172	168	97.7%	4	2.3%	46	46	100.0%	0	0.0%	27.4%	0.0%	23	23	100.0%	0	0.0%	50.0%	0.0%	152	143	94.1%	9	5.9%
	2016	171	159	93.0%	12	7.0%	55	53	96.4%	2	3.6%	33.3%	16.7%	25	24	96.0%	1	4.0%	45.3%	50.0%	146	139	95.2%	7	4.8%
	2017	173	159	91.9%	14	8.1%	39	38	97.4%	1	2.6%	23.9%	7.1%	15	14	93.3%	1	6.7%	36.8%	100.0%	131	123	93.9%	8	6.1%
	Average	189	180	94.8%	10	5.2%	51	50	96.9%	2	3.1%	27.6%	16.3%	22	22	96.4%	1	3.6%	43.5%	50.0%	141	133	94.3%	8	5.7%
Masters & IBHE Certificate	2013	33	32	97.0%	1	3.0%	7	7	100.0%	0	0.0%	21.9%	0.0%	4	4	100.0%	0	0.0%	57.1%	0.0%	29	28	96.6%	1	3.4%
	2014	25	24	96.0%	1	4.0%	4	4	100.0%	0	0.0%	16.7%	0.0%	1	1	100.0%	0	0.0%	25.0%	0.0%	31	31	100.0%	0	0.0%
	2015	25	24	96.0%	1	4.0%	5	5	100.0%	0	0.0%	20.8%	0.0%	3	3	100.0%	0	0.0%	60.0%	0.0%	30	30	100.0%	0	0.0%
	2016	25	23	92.0%	2	8.0%	3	2	66.7%	1	33.3%	8.7%	50.0%	3	2	66.7%	1	33.3%	100.0%	100.0%	22	21	95.5%	1	4.5%
	2017	21	18	85.7%	3	14.3%	1	1	100.0%	0	0.0%	5.6%	0.0%	1	1	100.0%	0	0.0%	100.0%	0.0%	18	17	94.4%	1	5.6%
	Average	26	24	93.8%	2	6.2%	4	4	95.0%	0	5.0%	15.7%	12.5%	2	2	91.7%	0	8.3%	57.9%	100.0%	26	25	97.7%	1	2.3%
Doctorate	2013	204	192	94.1%	12	5.9%	49	46	93.9%	3	6.1%	24.0%	25.0%	24	23	95.8%	1	4.2%	50.0%	33.3%	106	99	93.4%	7	6.6%
	2014	169	164	97.0%	5	3.0%	56	54	96.4%	2	3.6%	32.9%	40.0%	20	19	95.0%	1	5.0%	35.2%	50.0%	110	102	92.7%	8	7.3%
	2015	147	144	98.0%	3	2.0%	41	41	100.0%	0	0.0%	28.5%	0.0%	20	20	100.0%	0	0.0%	48.8%	0.0%	122	113	92.6%	9	7.4%
	2016	146	136	93.2%	10	6.8%	52	51	98.1%	1	1.9%	37.5%	10.0%	22	22	100.0%	0	0.0%	43.1%	0.0%	124	118	95.2%	6	4.8%
	2017	152	141	92.8%	11	7.2%	38	37	97.4%	1	2.6%	26.2%	9.1%	14	13	92.9%	1	7.1%	35.1%	100.0%	113	106	93.8%	7	6.2%
	Average	164	155	95.0%	8	5.0%	47	46	97.0%	1	3.0%	29.5%	17.1%	20	19	97.0%	1	3.0%	42.4%	42.9%	115	108	93.6%	7	6.4%
Non-Degree & Campus Certificate	2013	0	0	0.0%	0	0.0%	0	0	0.0%	0	0.0%	0.0%	0.0%	0	0	0.0%	0	0.0%	0.0%	0.0%	0	0	0.0%	0	0.0%
	2014	0	0	0.0%	0	0.0%	0	0	0.0%	0	0.0%	0.0%	0.0%	0	0	0.0%	0	0.0%	0.0%	0.0%	0	0	0.0%	0	0.0%
	2015	0	0	0.0%	0	0.0%	0	0	0.0%	0	0.0%	0.0%	0.0%	0	0	0.0%	0	0.0%	0.0%	0.0%	0	0	0.0%	0	0.0%
	2016	0	0	0.0%	0	0.0%	0	0	0.0%	0	0.0%	0.0%	0.0%	0	0	0.0%	0	0.0%	0.0%	0.0%	0	0	0.0%	0	0.0%
	2017	0	0	0.0%	0	0.0%	0	0	0.0%	0	0.0%	0.0%	0.0%	0	0	0.0%	0	0.0%	0.0%	0.0%	0	0	0.0%	0	0.0%
	Average	0	0	0.0%	0	0.0%	0	0	0.0%	0	0.0%	0.0%	0.0%	0	0	0.0%	0	0.0%	0.0%	0.0%	0	0	0.0%	0	0.0%

**Note:** URM stands for Under-Represented Minority and includes American Indian or Alaska Native; Black or African-American; Hispanic / Latino race/ethnicity groups

**Applications - Total  
by Race/Ethnicity**

Mathematics

Fall 2013 - Fall 2017

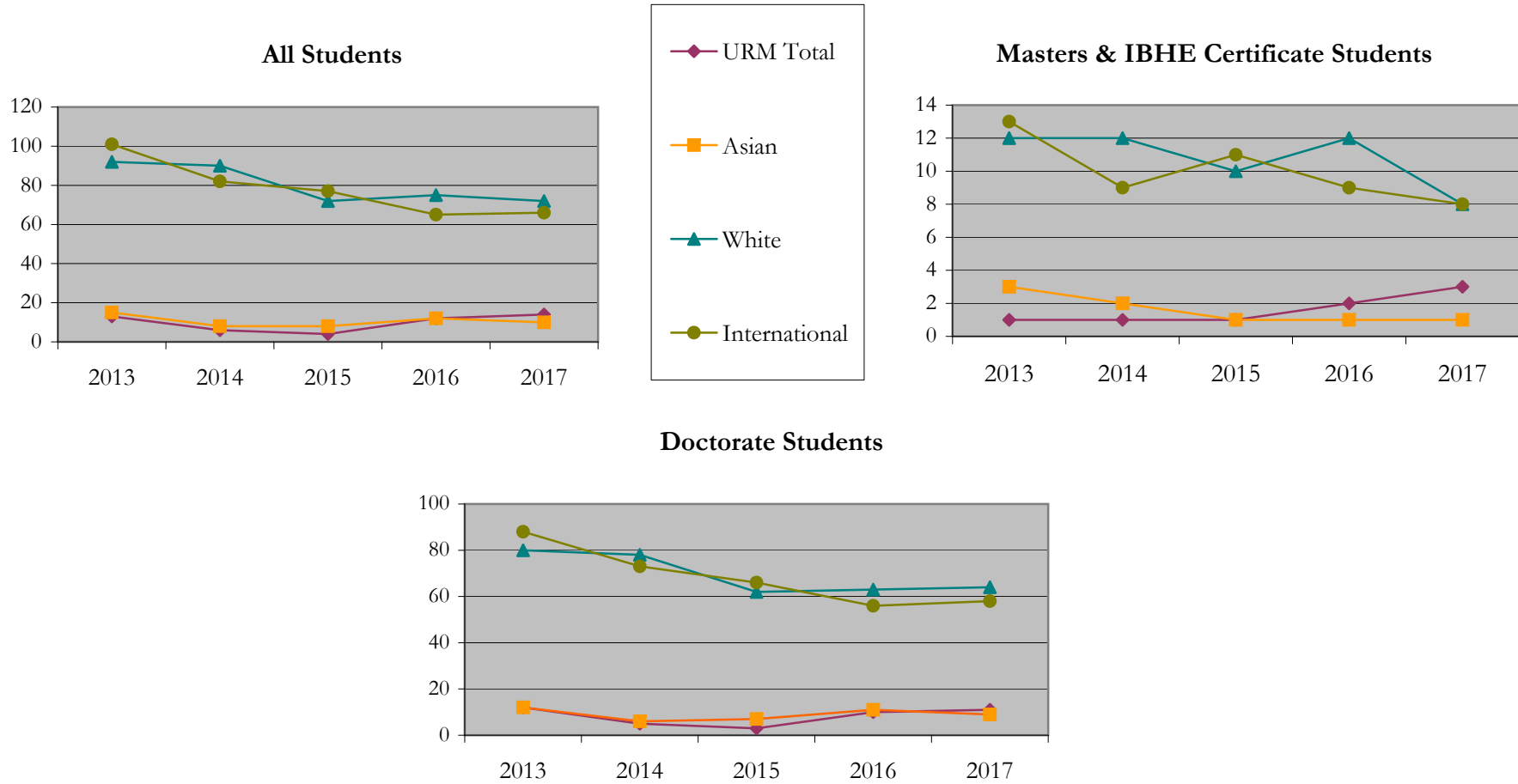
		Total	Under Represented Minorities (URM)																Not Reported		
			American Indian or Alaska Native		Black or African American		Hispanic / Latino		URM Total		Asian		Native Hawaiian or Pacific Islander		White		Two or More Races			International	
			Count	%	Count	%	Count	%	Count	%	Count	%	Count	%	Count	%	Count	%		Count	%
All	2013	237	0	0.0	2	0.8	11	4.6	13	5.5	15	6.3	0	0.0	92	38.8	2	0.8	101	42.6	14
	2014	195	0	0.0	0	0.0	6	3.1	6	3.1	8	4.1	0	0.0	90	46.2	5	2.6	82	42.1	4
	2015	172	0	0.0	2	1.2	2	1.2	4	2.3	8	4.7	0	0.0	72	41.9	4	2.3	77	44.8	7
	2016	171	0	0.0	1	0.6	11	6.4	12	7.0	12	7.0	0	0.0	75	43.9	4	2.3	65	38.0	3
	2017	173	0	0.0	1	0.6	13	7.5	14	8.1	10	5.8	0	0.0	72	41.6	1	0.6	66	38.2	10
Masters & IBHE Certificate	2013	33	0	0.0	0	0.0	1	3.0	1	3.0	3	9.1	0	0.0	12	36.4	0	0.0	13	39.4	4
	2014	25	0	0.0	0	0.0	1	4.0	1	4.0	2	8.0	0	0.0	12	48.0	0	0.0	9	36.0	1
	2015	25	0	0.0	0	0.0	1	4.0	1	4.0	1	4.0	0	0.0	10	40.0	1	4.0	11	44.0	1
	2016	25	0	0.0	1	4.0	1	4.0	2	8.0	1	4.0	0	0.0	12	48.0	1	4.0	9	36.0	0
	2017	21	0	0.0	0	0.0	3	14.3	3	14.3	1	4.8	0	0.0	8	38.1	0	0.0	8	38.1	1
Doctorate	2013	204	0	0.0	2	1.0	10	4.9	12	5.9	12	5.9	0	0.0	80	39.2	2	1.0	88	43.1	10
	2014	170	0	0.0	0	0.0	5	2.9	5	2.9	6	3.5	0	0.0	78	45.9	5	2.9	73	42.9	3
	2015	147	0	0.0	2	1.4	1	0.7	3	2.0	7	4.8	0	0.0	62	42.2	3	2.0	66	44.9	6
	2016	146	0	0.0	0	0.0	10	6.8	10	6.8	11	7.5	0	0.0	63	43.2	3	2.1	56	38.4	3
	2017	152	0	0.0	1	0.7	10	6.6	11	7.2	9	5.9	0	0.0	64	42.1	1	0.7	58	38.2	9
Non-Degree & Campus Certificate	2013	0	0	0.0	0	0.0	0	0.0	0	0.0	0	0.0	0	0.0	0	0.0	0	0.0	0	0.0	0
	2014	0	0	0.0	0	0.0	0	0.0	0	0.0	0	0.0	0	0.0	0	0.0	0	0.0	0	0.0	0
	2015	0	0	0.0	0	0.0	0	0.0	0	0.0	0	0.0	0	0.0	0	0.0	0	0.0	0	0.0	0
	2016	0	0	0.0	0	0.0	0	0.0	0	0.0	0	0.0	0	0.0	0	0.0	0	0.0	0	0.0	0
	2017	0	0	0.0	0	0.0	0	0.0	0	0.0	0	0.0	0	0.0	0	0.0	0	0.0	0	0.0	0

**Note:** URM stands for Under-Represented Minority and includes American Indian or Alaska Native; Black or African-American; Hispanic / Latino race/ethnicity groups

# Applications - Total by Race/Ethnicity

Mathematics

Fall 2013 - Fall 2017



**Notes:** 1) URM stands for Under-Represented Minority and includes American Indian or Alaska Native; Black or African-American; Hispanic / Latino race/ethnicity groups  
 2) Individual URM groups, Native Hawaiian Pacific Islander, Two or More Races, and Other race/ethnicity categories left off this charts due to relatively low numbers

**Applications - Admitted  
by Race/Ethnicity**

Mathematics

Fall 2013 - Fall 2017

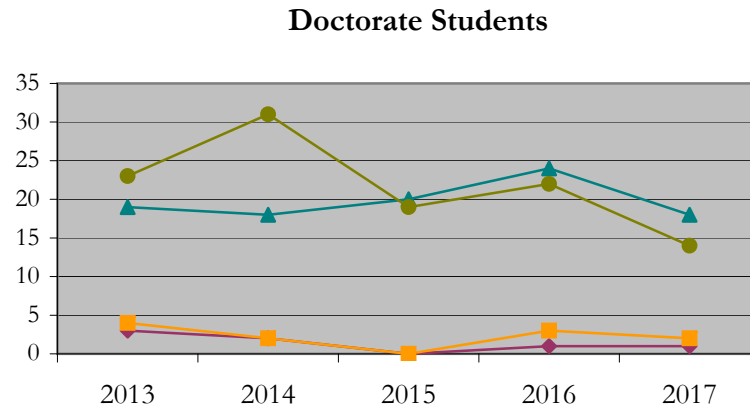
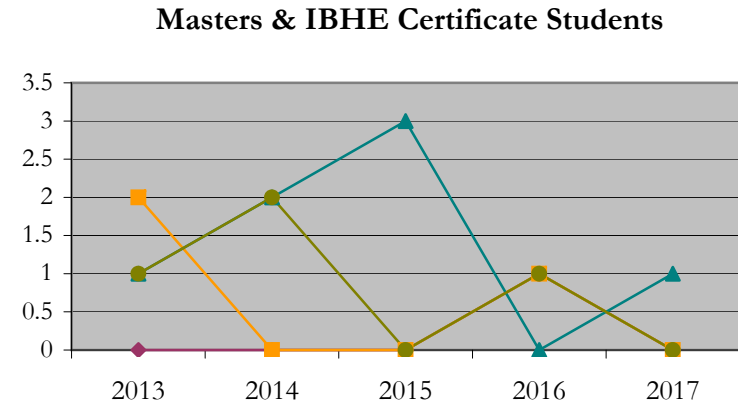
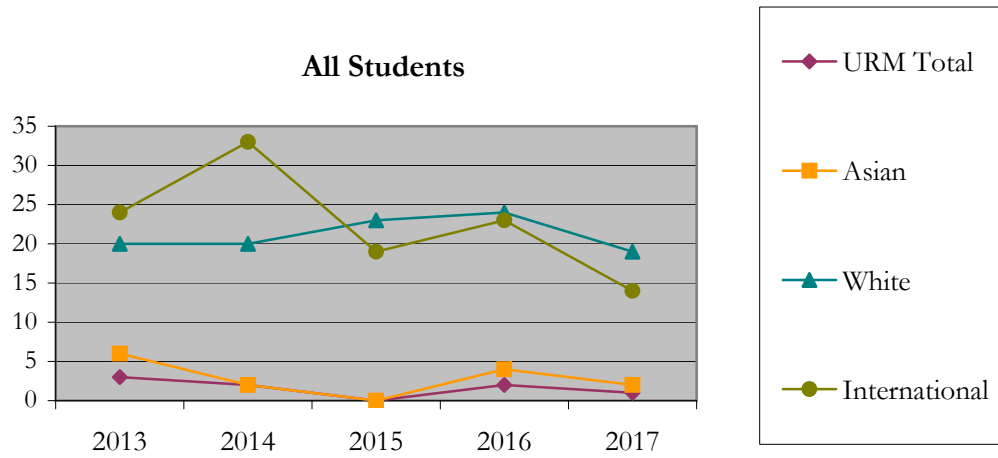
		Total	Under Represented Minorities (URM)								Asian		Native Hawaiian or Pacific Islander		White		Two or More Races		International		Not Reported
			American Indian or Alaska Native		Black or African American		Hispanic / Latino		URM Total												
			Count	%	Count	%	Count	%	Count	%											
All	2013	56	0	0.0	0	0.0	3	5.4	3	5.4	6	10.7	0	0.0	20	35.7	0	0.0	24	42.9	3
	2014	60	0	0.0	0	0.0	2	3.3	2	3.3	2	3.3	0	0.0	20	33.3	2	3.3	33	55.0	1
	2015	46	0	0.0	0	0.0	0	0.0	0	0.0	0	0.0	0	0.0	23	50.0	3	6.5	19	41.3	1
	2016	55	0	0.0	0	0.0	2	3.6	2	3.6	4	7.3	0	0.0	24	43.6	0	0.0	23	41.8	2
	2017	39	0	0.0	0	0.0	1	2.6	1	2.6	2	5.1	0	0.0	19	48.7	0	0.0	14	35.9	3
Masters & IBHE Certificate	2013	7	0	0.0	0	0.0	0	0.0	0	0.0	2	28.6	0	0.0	1	14.3	0	0.0	1	14.3	3
	2014	4	0	0.0	0	0.0	0	0.0	0	0.0	0	0.0	0	0.0	2	50.0	0	0.0	2	50.0	0
	2015	5	0	0.0	0	0.0	0	0.0	0	0.0	0	0.0	0	0.0	3	60.0	1	20.0	0	0.0	1
	2016	3	0	0.0	0	0.0	1	33.3	1	33.3	1	33.3	0	0.0	0	0.0	0	0.0	1	33.3	0
	2017	1	0	0.0	0	0.0	0	0.0	0	0.0	0	0.0	0	0.0	1	100.0	0	0.0	0	0.0	0
Doctorate	2013	49	0	0.0	0	0.0	3	6.1	3	6.1	4	8.2	0	0.0	19	38.8	0	0.0	23	46.9	0
	2014	56	0	0.0	0	0.0	2	3.6	2	3.6	2	3.6	0	0.0	18	32.1	2	3.6	31	55.4	1
	2015	41	0	0.0	0	0.0	0	0.0	0	0.0	0	0.0	0	0.0	20	48.8	2	4.9	19	46.3	0
	2016	52	0	0.0	0	0.0	1	1.9	1	1.9	3	5.8	0	0.0	24	46.2	0	0.0	22	42.3	2
	2017	38	0	0.0	0	0.0	1	2.6	1	2.6	2	5.3	0	0.0	18	47.4	0	0.0	14	36.8	3
Non-Degree & Campus Certificate	2013	0	0	0.0	0	0.0	0	0.0	0	0.0	0	0.0	0	0.0	0	0.0	0	0.0	0	0.0	0
	2014	0	0	0.0	0	0.0	0	0.0	0	0.0	0	0.0	0	0.0	0	0.0	0	0.0	0	0.0	0
	2015	0	0	0.0	0	0.0	0	0.0	0	0.0	0	0.0	0	0.0	0	0.0	0	0.0	0	0.0	0
	2016	0	0	0.0	0	0.0	0	0.0	0	0.0	0	0.0	0	0.0	0	0.0	0	0.0	0	0.0	0
	2017	0	0	0.0	0	0.0	0	0.0	0	0.0	0	0.0	0	0.0	0	0.0	0	0.0	0	0.0	0

**Note:** URM stands for Under-Represented Minority and includes American Indian or Alaska Native; Black or African-American; Hispanic / Latino race/ethnicity groups

# Applications - Admitted by Race/Ethnicity

Mathematics

Fall 2013 - Fall 2017



**Notes:** 1) URM stands for Under-Represented Minority and includes American Indian or Alaska Native; Black or African-American; Hispanic / Latino race/ethnicity groups

2) Individual URM groups, Native Hawaiian Pacific Islander, Two or More Races, and Other race/ethnicity categories left off this charts due to relatively low numbers

**Enrollment - New  
by Race/Ethnicity**

Mathematics

Fall 2013 - Fall 2017

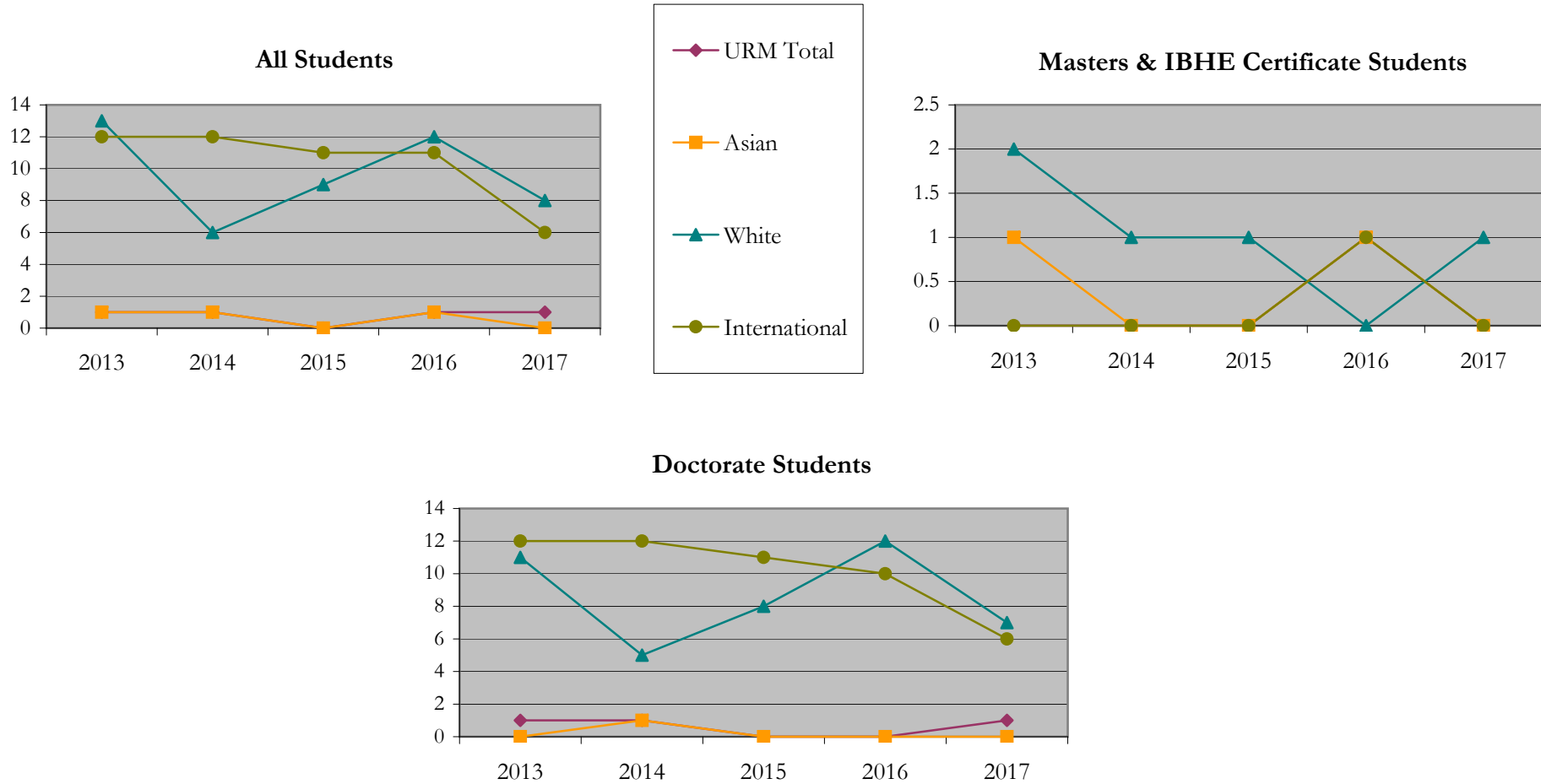
		Total	Under Represented Minorities (URM)								Asian		Native Hawaiian or Pacific Islander		White		Two or More Races		International		Not Reported
			American Indian or Alaska Native		Black or African American		Hispanic / Latino		URM Total												
			Count	%	Count	%	Count	%	Count	%											
All	2013	28	0	0.0	0	0.0	1	3.6	1	3.6	1	3.6	0	0.0	13	46.4	0	0.0	12	42.9	1
	2014	21	0	0.0	0	0.0	1	4.8	1	4.8	1	4.8	0	0.0	6	28.6	1	4.8	12	57.1	0
	2015	23	0	0.0	0	0.0	0	0.0	0	0.0	0	0.0	0	0.0	9	39.1	2	8.7	11	47.8	1
	2016	25	0	0.0	0	0.0	1	4.0	1	4.0	1	4.0	0	0.0	12	48.0	0	0.0	11	44.0	0
	2017	15	0	0.0	0	0.0	1	6.7	1	6.7	0	0.0	0	0.0	8	53.3	0	0.0	6	40.0	0
Masters & IBHE Certificate	2013	4	0	0.0	0	0.0	0	0.0	0	0.0	1	25.0	0	0.0	2	50.0	0	0.0	0	0.0	1
	2014	1	0	0.0	0	0.0	0	0.0	0	0.0	0	0.0	0	0.0	1	100.0	0	0.0	0	0.0	0
	2015	3	0	0.0	0	0.0	0	0.0	0	0.0	0	0.0	0	0.0	1	33.3	1	33.3	0	0.0	1
	2016	3	0	0.0	0	0.0	1	33.3	1	33.3	1	33.3	0	0.0	0	0.0	0	0.0	1	33.3	0
	2017	1	0	0.0	0	0.0	0	0.0	0	0.0	0	0.0	0	0.0	1	100.0	0	0.0	0	0.0	0
Doctorate	2013	24	0	0.0	0	0.0	1	4.2	1	4.2	0	0.0	0	0.0	11	45.8	0	0.0	12	50.0	0
	2014	20	0	0.0	0	0.0	1	5.0	1	5.0	1	5.0	0	0.0	5	25.0	1	5.0	12	60.0	0
	2015	20	0	0.0	0	0.0	0	0.0	0	0.0	0	0.0	0	0.0	8	40.0	1	5.0	11	55.0	0
	2016	22	0	0.0	0	0.0	0	0.0	0	0.0	0	0.0	0	0.0	12	54.5	0	0.0	10	45.5	0
	2017	14	0	0.0	0	0.0	1	7.1	1	7.1	0	0.0	0	0.0	7	50.0	0	0.0	6	42.9	0
Non-Degree & Campus Certificate	2013	0	0	0.0	0	0.0	0	0.0	0	0.0	0	0.0	0	0.0	0	0.0	0	0.0	0	0.0	0
	2014	0	0	0.0	0	0.0	0	0.0	0	0.0	0	0.0	0	0.0	0	0.0	0	0.0	0	0.0	0
	2015	0	0	0.0	0	0.0	0	0.0	0	0.0	0	0.0	0	0.0	0	0.0	0	0.0	0	0.0	0
	2016	0	0	0.0	0	0.0	0	0.0	0	0.0	0	0.0	0	0.0	0	0.0	0	0.0	0	0.0	0
	2017	0	0	0.0	0	0.0	0	0.0	0	0.0	0	0.0	0	0.0	0	0.0	0	0.0	0	0.0	0

**Note:** URM stands for Under-Represented Minority and includes American Indian or Alaska Native; Black or African-American; Hispanic / Latino race/ethnicity groups

# Enrollment - New by Race/Ethnicity

Mathematics

Fall 2013 - Fall 2017



**Notes:** 1) URM stands for Under-Represented Minority and includes American Indian or Alaska Native; Black or African-American; Hispanic / Latino race/ethnicity groups

2) Individual URM groups, Native Hawaiian Pacific Islander, Two or More Races, and Other race/ethnicity categories left off this charts due to relatively low numbers

# Enrollment - Total by Race/Ethnicity

Mathematics

Fall 2013 - Fall 2017

		Total	Under Represented Minorities (URM)								Asian		Native Hawaiian or Pacific Islander		White		Two or More Races		International		Not Reported
			American Indian or Alaska Native		Black or African American		Hispanic / Latino		URM Total												
			Count	%	Count	%	Count	%	Count	%											
All	2013	135	0	0.0	0	0.0	8	5.9	8	5.9	7	5.2	0	0.0	56	41.5	1	0.7	59	43.7	4
	2014	141	0	0.0	0	0.0	8	5.7	8	5.7	8	5.7	0	0.0	54	38.3	3	2.1	64	45.4	4
	2015	152	0	0.0	1	0.7	8	5.3	9	5.9	8	5.3	0	0.0	61	40.1	5	3.3	65	42.8	4
	2016	146	0	0.0	1	0.7	6	4.1	7	4.8	7	4.8	0	0.0	58	39.7	5	3.4	65	44.5	4
	2017	131	0	0.0	1	0.8	7	5.3	8	6.1	4	3.1	0	0.0	55	42.0	3	2.3	58	44.3	3
Masters & IBHE Certificate	2013	29	0	0.0	0	0.0	1	3.4	1	3.4	2	6.9	0	0.0	9	31.0	0	0.0	14	48.3	3
	2014	31	0	0.0	0	0.0	0	0.0	0	0.0	3	9.7	0	0.0	8	25.8	1	3.2	16	51.6	3
	2015	30	0	0.0	0	0.0	0	0.0	0	0.0	3	10.0	0	0.0	9	30.0	2	6.7	14	46.7	2
	2016	22	0	0.0	0	0.0	1	4.5	1	4.5	2	9.1	0	0.0	6	27.3	2	9.1	10	45.5	1
	2017	18	0	0.0	0	0.0	1	5.6	1	5.6	1	5.6	0	0.0	6	33.3	2	11.1	8	44.4	0
Doctorate	2013	106	0	0.0	0	0.0	7	6.6	7	6.6	5	4.7	0	0.0	47	44.3	1	0.9	45	42.5	1
	2014	110	0	0.0	0	0.0	8	7.3	8	7.3	5	4.5	0	0.0	46	41.8	2	1.8	48	43.6	1
	2015	122	0	0.0	1	0.8	8	6.6	9	7.4	5	4.1	0	0.0	52	42.6	3	2.5	51	41.8	2
	2016	124	0	0.0	1	0.8	5	4.0	6	4.8	5	4.0	0	0.0	52	41.9	3	2.4	55	44.4	3
	2017	113	0	0.0	1	0.9	6	5.3	7	6.2	3	2.7	0	0.0	49	43.4	1	0.9	50	44.2	3
Non-Degree & Campus Certificate	2013	0	0	0.0	0	0.0	0	0.0	0	0.0	0	0.0	0	0.0	0	0.0	0	0.0	0	0.0	0
	2014	0	0	0.0	0	0.0	0	0.0	0	0.0	0	0.0	0	0.0	0	0.0	0	0.0	0	0.0	0
	2015	0	0	0.0	0	0.0	0	0.0	0	0.0	0	0.0	0	0.0	0	0.0	0	0.0	0	0.0	0
	2016	0	0	0.0	0	0.0	0	0.0	0	0.0	0	0.0	0	0.0	0	0.0	0	0.0	0	0.0	0
	2017	0	0	0.0	0	0.0	0	0.0	0	0.0	0	0.0	0	0.0	0	0.0	0	0.0	0	0.0	0

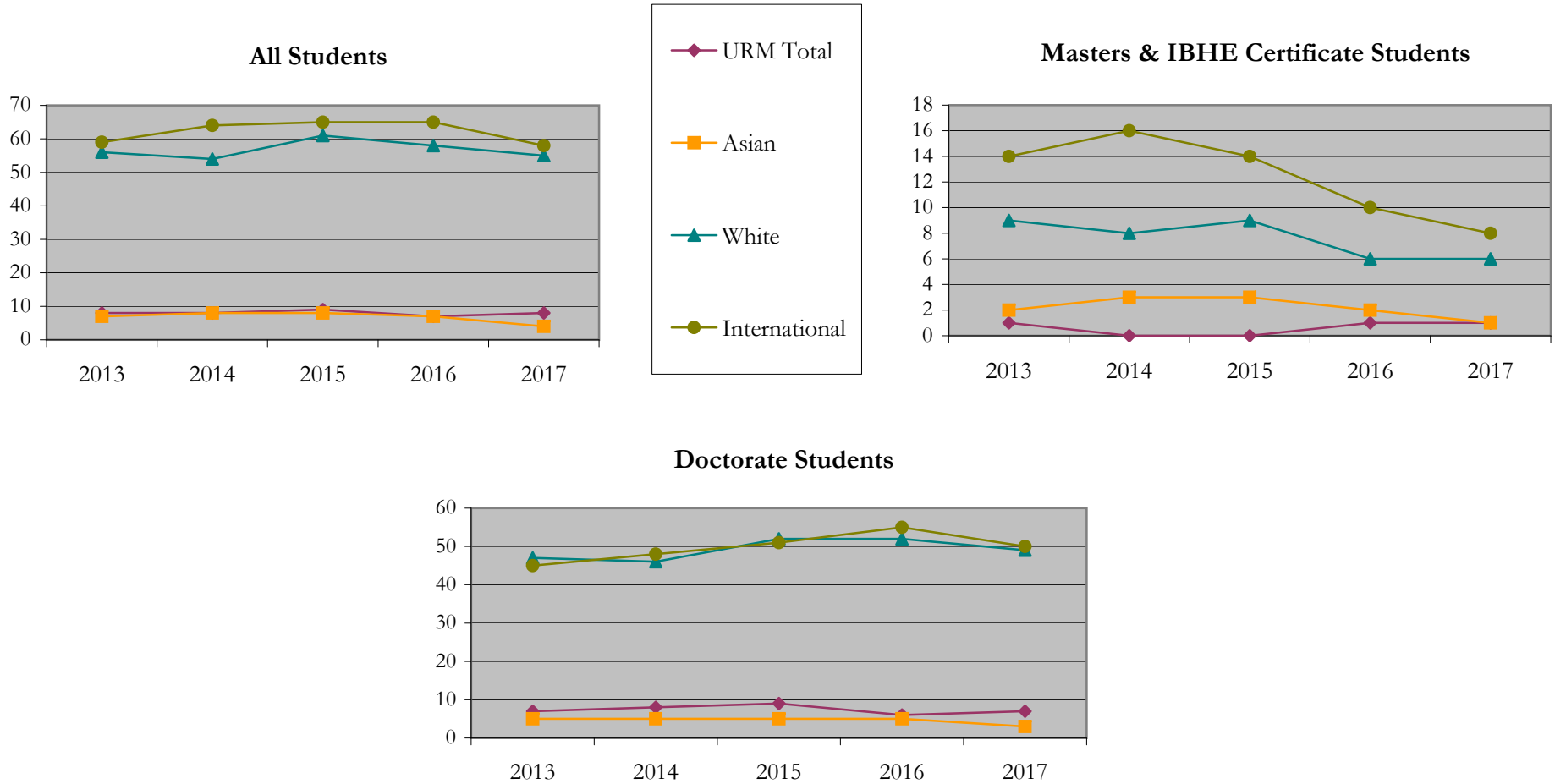
**Note:** URM stands for Under-Represented Minority and includes American Indian or Alaska Native; Black or African-American; Hispanic / Latino race/ethnicity groups



# Enrollment - Total by Race/Ethnicity

Mathematics

Fall 2013 - Fall 2017



**Notes:** 1) URM stands for Under-Represented Minority and includes American Indian or Alaska Native; Black or African-American; Hispanic / Latino race/ethnicity groups

2) Individual URM groups, Native Hawaiian Pacific Islander, Two or More Races, and Other race/ethnicity categories left off this charts due to relatively low numbers

# Enrollment

## by Student Type, Enrollment Time, and Gender

Mathematics

Fall 2013 - Fall 2017

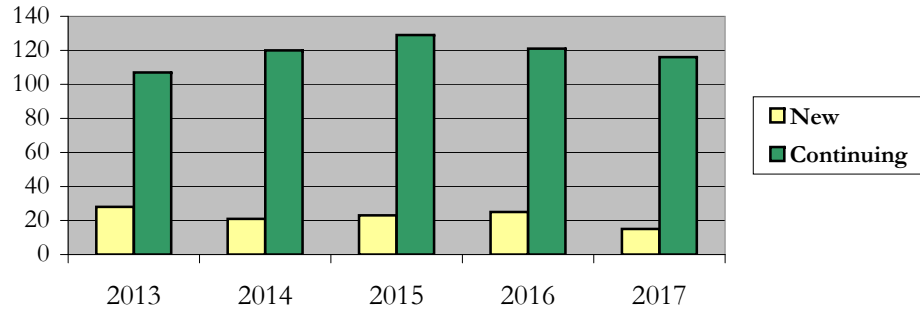
		Total	New		Continuing		Male		Female		Gender Not Reported	Part-time		Full-time	
			Count	%	Count	%	Count	%	Count	%		Count	%	Count	%
All	2013	135	28	20.7	107	79.3	104	77.0	31	23.0	0	14	10.4	121	89.6
	2014	141	21	14.9	120	85.1	108	76.6	33	23.4	0	15	10.6	126	89.4
	2015	152	23	15.1	129	84.9	112	73.7	40	26.3	0	9	5.9	143	94.1
	2016	146	25	17.1	121	82.9	109	74.7	37	25.3	0	12	8.2	134	91.8
	2017	131	15	11.5	116	88.5	101	77.1	30	22.9	0	16	12.2	115	87.8
Masters & IBHE Certificate	2013	29	4	13.8	25	86.2	26	89.7	3	10.3	0	9	31.0	20	69.0
	2014	31	1	3.2	30	96.8	27	87.1	4	12.9	0	8	25.8	23	74.2
	2015	30	3	10.0	27	90.0	25	83.3	5	16.7	0	4	13.3	26	86.7
	2016	22	3	13.6	19	86.4	16	72.7	6	27.3	0	4	18.2	18	81.8
	2017	18	1	5.6	17	94.4	11	61.1	7	38.9	0	4	22.2	14	77.8
Doctorate	2013	106	24	22.6	82	77.4	78	73.6	28	26.4	0	5	4.7	101	95.3
	2014	110	20	18.2	90	81.8	81	73.6	29	26.4	0	7	6.4	103	93.6
	2015	122	20	16.4	102	83.6	87	71.3	35	28.7	0	5	4.1	117	95.9
	2016	124	22	17.7	102	82.3	93	75.0	31	25.0	0	8	6.5	116	93.5
	2017	113	14	12.4	99	87.6	90	79.6	23	20.4	0	12	10.6	101	89.4
Non-Degree & Campus Certificate	2013	0	0	0.0	0	0.0	0	0.0	0	0.0	0	0	0.0	0	0.0
	2014	0	0	0.0	0	0.0	0	0.0	0	0.0	0	0	0.0	0	0.0
	2015	0	0	0.0	0	0.0	0	0.0	0	0.0	0	0	0.0	0	0.0
	2016	0	0	0.0	0	0.0	0	0.0	0	0.0	0	0	0.0	0	0.0
	2017	0	0	0.0	0	0.0	0	0.0	0	0.0	0	0	0.0	0	0.0

# Enrollment by Student Type, Enrollment Time, and Gender (All Students)

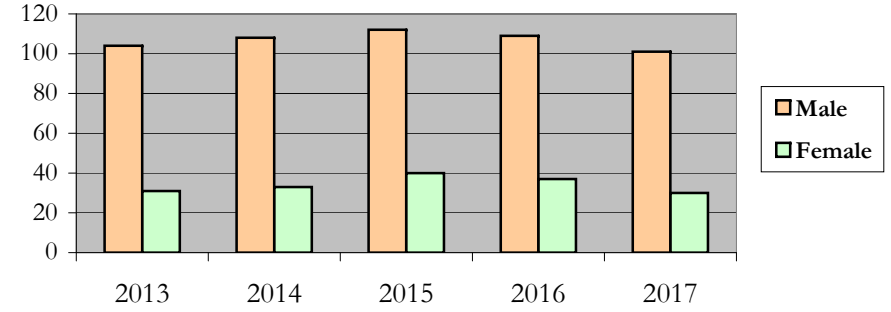
Mathematics

Fall 2013 - Fall 2017

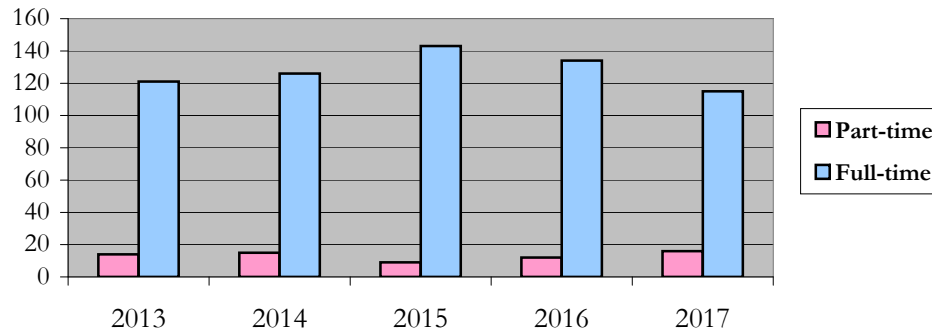
### New and Continuing Enrollment



### Enrollment by Gender



### Enrollment by Student Enrollment Time

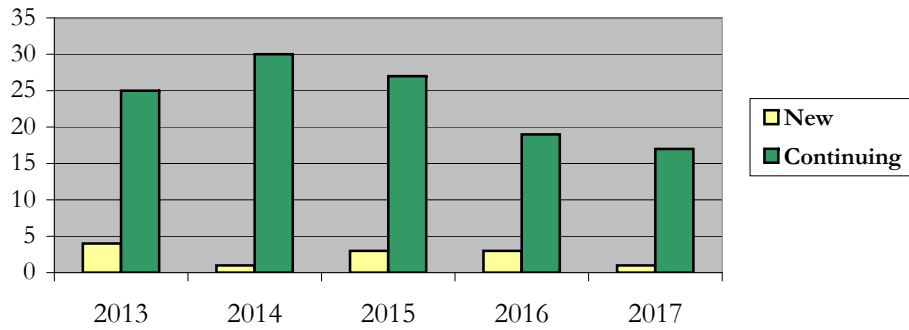


**Enrollment**  
**by Student Type, Enrollment Time, and Gender (Master's Students)**

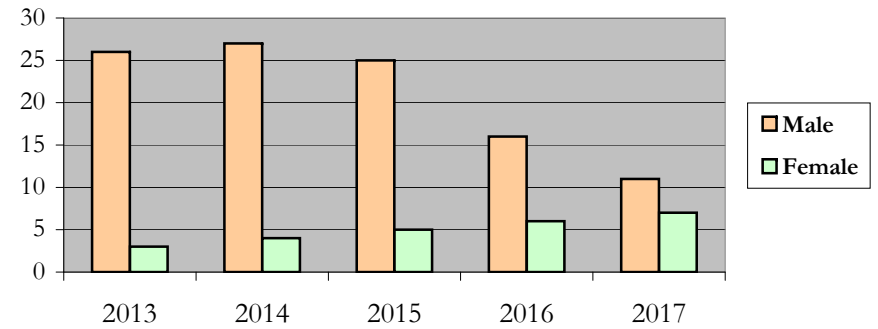
Mathematics

Fall 2013 - Fall 2017

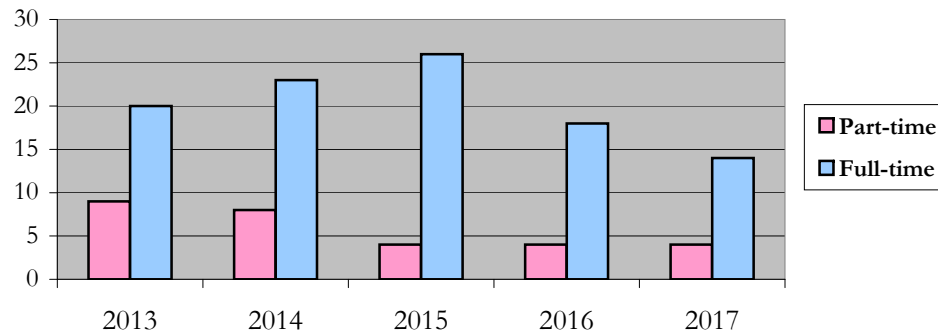
**New and Continuing Enrollment**



**Enrollment by Gender**



**Enrollment by Student Enrollment Time**

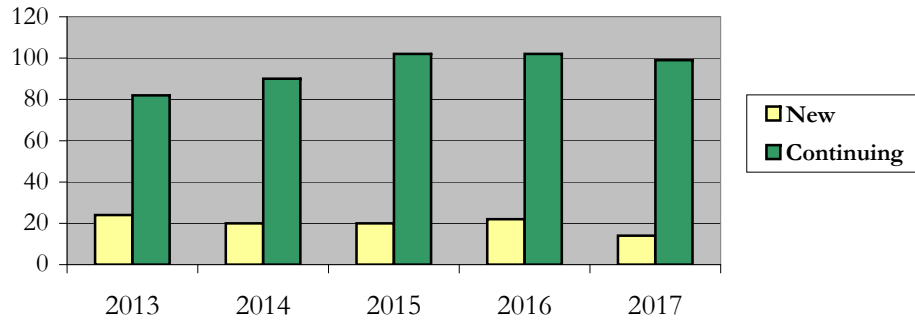


# Enrollment by Student Type, Enrollment Time, and Gender (Doctorate Students)

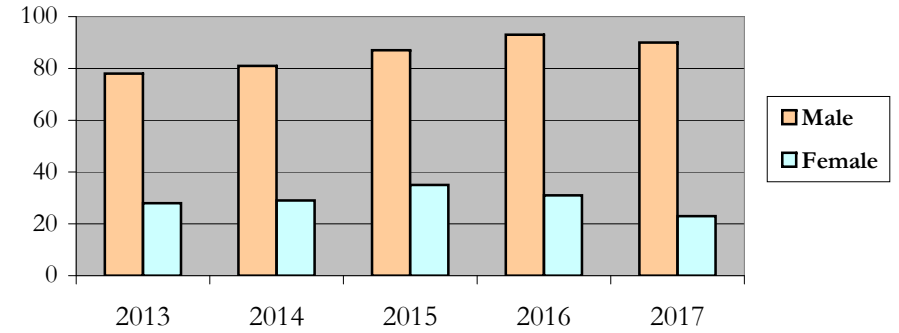
Mathematics

Fall 2013 - Fall 2017

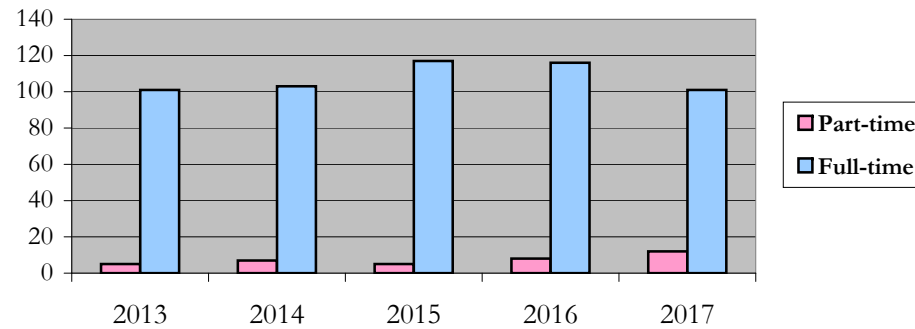
### New and Continuing Enrollment



### Enrollment by Gender



### Enrollment by Student Enrollment Time



# Degrees Conferred by Race/Ethnicity

Mathematics

Fall 2013 - Fall 2017

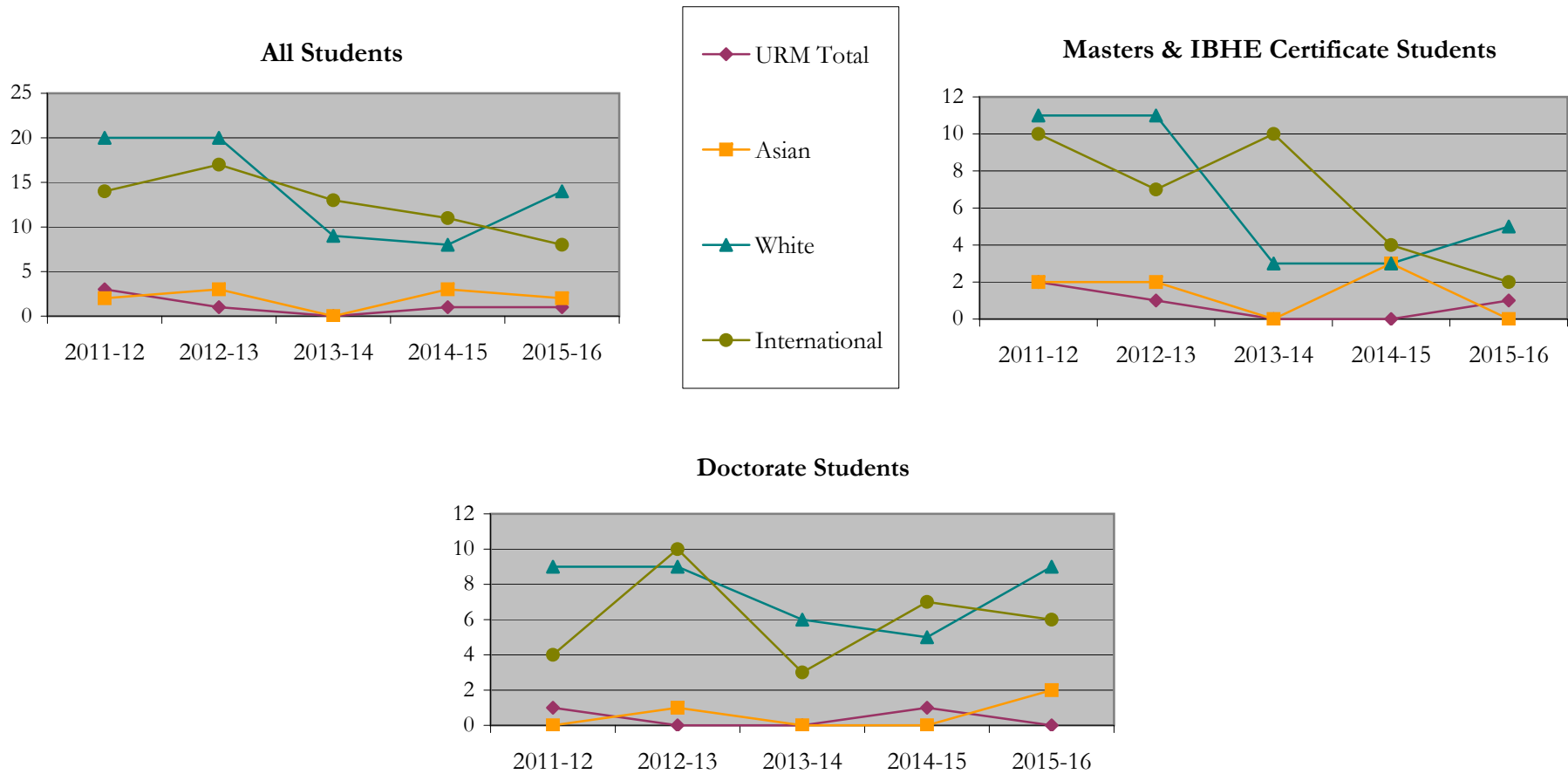
		Total	Under Represented Minorities (URM)								Asian	Native Hawaiian or Pacific Islander		White		Two or More Races		International		Not Reported	
			American Indian or Alaska Native		Black or African American		Hispanic / Latino		URM Total			Count	%	Count	%	Count	%	Count	%	Count	%
			Count	%	Count	%	Count	%	Count	%											
All	2012 - 13	39	0	0.0	0	0.0	3	7.7	3	7.7	2	5.1	0	0.0	20	51.3	0	0.0	14	35.9	0
	2013 - 14	42	0	0.0	1	2.4	0	0.0	1	2.4	3	7.1	0	0.0	20	47.6	1	2.4	17	40.5	0
	2014 - 15	23	0	0.0	0	0.0	0	0.0	0	0.0	0	0.0	0	0.0	9	39.1	0	0.0	13	56.5	1
	2015 - 16	26	0	0.0	0	0.0	1	3.8	1	3.8	3	11.5	0	0.0	8	30.8	1	3.8	11	42.3	2
	2016 - 17	27	0	0.0	0	0.0	1	3.7	1	3.7	2	7.4	0	0.0	14	51.9	1	3.7	8	29.6	1
Masters & IBHE Certificate	2012 - 13	25	0	0.0	0	0.0	2	8.0	2	8.0	2	8.0	0	0.0	11	44.0	0	0.0	10	40.0	0
	2013 - 14	21	0	0.0	1	4.8	0	0.0	1	4.8	2	9.5	0	0.0	11	52.4	0	0.0	7	33.3	0
	2014 - 15	14	0	0.0	0	0.0	0	0.0	0	0.0	0	0.0	0	0.0	3	21.4	0	0.0	10	71.4	1
	2015 - 16	13	0	0.0	0	0.0	0	0.0	0	0.0	3	23.1	0	0.0	3	23.1	1	7.7	4	30.8	2
	2016 - 17	10	0	0.0	0	0.0	1	10.0	1	10.0	0	0.0	0	0.0	5	50.0	1	10.0	2	20.0	1
Doctorate	2012 - 13	14	0	0.0	0	0.0	1	7.1	1	7.1	0	0.0	0	0.0	9	64.3	0	0.0	4	28.6	0
	2013 - 14	21	0	0.0	0	0.0	0	0.0	0	0.0	1	4.8	0	0.0	9	42.9	1	4.8	10	47.6	0
	2014 - 15	9	0	0.0	0	0.0	0	0.0	0	0.0	0	0.0	0	0.0	6	66.7	0	0.0	3	33.3	0
	2015 - 16	13	0	0.0	0	0.0	1	7.7	1	7.7	0	0.0	0	0.0	5	38.5	0	0.0	7	53.8	0
	2016 - 17	17	0	0.0	0	0.0	0	0.0	0	0.0	2	11.8	0	0.0	9	52.9	0	0.0	6	35.3	0
Non-Degree & Campus Certificate	2012 - 13	0	0	0.0	0	0.0	0	0.0	0	0.0	0	0.0	0	0.0	0	0.0	0	0.0	0	0.0	0
	2013 - 14	0	0	0.0	0	0.0	0	0.0	0	0.0	0	0.0	0	0.0	0	0.0	0	0.0	0	0.0	0
	2014 - 15	0	0	0.0	0	0.0	0	0.0	0	0.0	0	0.0	0	0.0	0	0.0	0	0.0	0	0.0	0
	2015 - 16	0	0	0.0	0	0.0	0	0.0	0	0.0	0	0.0	0	0.0	0	0.0	0	0.0	0	0.0	0
	2016 - 17	0	0	0.0	0	0.0	0	0.0	0	0.0	0	0.0	0	0.0	0	0.0	0	0.0	0	0.0	0

**Note:** Each row represents a fiscal year, beginning with Summer term and ending with Spring.

# Degrees Conferred by Race/Ethnicity

Mathematics

Fall 2013 - Fall 2017



**Notes:** 1) URM stands for Under-Represented Minority and includes American Indian or Alaska Native; Black or African-American; Hispanic / Latino race/ethnicity groups

2) Individual URM groups, Native Hawaiian Pacific Islander, Two or More Races, and Other race/ethnicity categories left off this charts due to relatively low numbers

**Degrees Conferred**  
**by Gender**

Mathematics

Fall 2013 - Fall 2017

		Total	Male		Female		Not Reported
			Count	%	Count	%	
All	2012 - 13	39	29	74.4	10	25.6	0
	2013 - 14	42	30	71.4	12	28.6	0
	2014 - 15	23	21	91.3	2	8.7	0
	2015 - 16	26	19	73.1	7	26.9	0
	2016 - 17	27	16	59.3	11	40.7	0
Masters & IBHE Certificate	2012 - 13	25	19	76.0	6	24.0	0
	2013 - 14	21	15	71.4	6	28.6	0
	2014 - 15	14	13	92.9	1	7.1	0
	2015 - 16	13	9	69.2	4	30.8	0
	2016 - 17	10	6	60.0	4	40.0	0
Doctorate	2012 - 13	14	10	71.4	4	28.6	0
	2013 - 14	21	15	71.4	6	28.6	0
	2014 - 15	9	8	88.9	1	11.1	0
	2015 - 16	13	10	76.9	3	23.1	0
	2016 - 17	17	10	58.8	7	41.2	0
Campus Certificates	2012 - 13	0	0	0.0	0	0.0	0
	2013 - 14	0	0	0.0	0	0.0	0
	2014 - 15	0	0	0.0	0	0.0	0
	2015 - 16	0	0	0.0	0	0.0	0
	2016 - 17	0	0	0.0	0	0.0	0

**Note:** Each row represents a fiscal year, beginning with Summer term and ending with Spring.

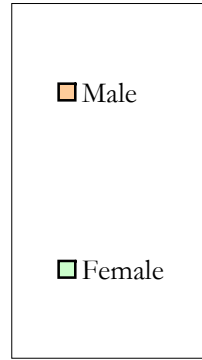
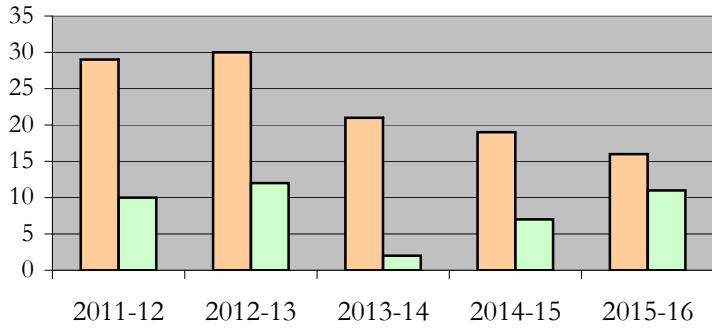


# Degrees Conferred by Gender

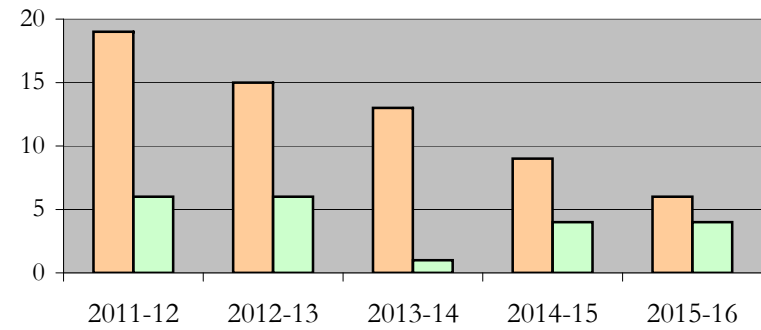
Mathematics

Fall 2013 - Fall 2017

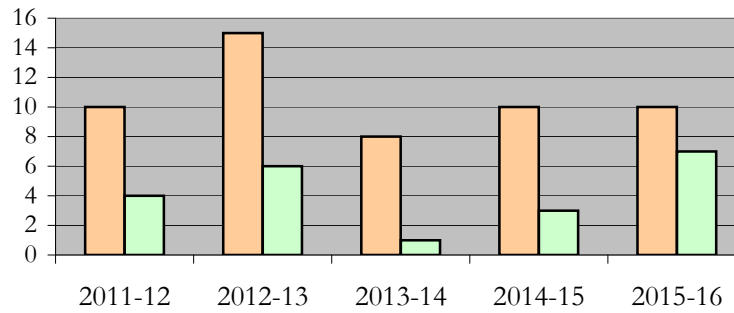
### All Students



### Masters & IBHE Certificate Students



### Doctorate Students



## **Appendix A**

Mathematics

Fall 2013 - Fall 2017

### **List of program codes included in this document**

20FS0439PHD

20FS0439MS

**Notes:** 1) Program codes are sorted by alphabetical order in column-wise fashion

2) Program codes highlighted in yellow did not have applications, enrollment, nor degrees conferred in the covered period