

Matriculation Diversity Pipeline

History
Fall 2013 - Fall 2017

	Fall Semester Year	Applied					Admitted					Non-URM Admitted to Applied Yield %	URM Admitted to Applied Yield %	New Enrollment					Non-URM Enrolled to Admitted Yield %	URM Enrolled to Admitted Yield %	Total Enrollment				
		Grand Total	Non-URM Total		URM Total		Grand Total	Non-URM Total		URM Total				Grand Total	Non-URM Total		URM Total				Grand Total	Non-URM Total		URM Total	
			Count	%	Count	%		Count	%	Count	%				Count	%	Count	%				Count	%	Count	%
All	2013	83	75	90.4%	8	9.6%	16	15	93.8%	1	6.3%	20.0%	12.5%	6	5	83.3%	1	16.7%	33.3%	100.0%	54	49	90.7%	5	9.3%
	2014	94	85	90.4%	9	9.6%	24	22	91.7%	2	8.3%	25.9%	22.2%	7	7	100.0%	0	0.0%	31.8%	0.0%	52	48	92.3%	4	7.7%
	2015	64	57	89.1%	7	10.9%	21	16	76.2%	5	23.8%	28.1%	71.4%	9	6	66.7%	3	33.3%	37.5%	60.0%	54	48	88.9%	6	11.1%
	2016	71	61	85.9%	10	14.1%	19	14	73.7%	5	26.3%	23.0%	50.0%	8	5	62.5%	3	37.5%	35.7%	60.0%	56	49	87.5%	7	12.5%
	2017	53	47	88.7%	6	11.3%	12	9	75.0%	3	25.0%	19.1%	50.0%	5	4	80.0%	1	20.0%	44.4%	33.3%	53	46	86.8%	7	13.2%
	Average	73	65	89.0%	8	11.0%	18	15	82.6%	3	17.4%	23.4%	40.0%	7	5	77.1%	2	22.9%	35.5%	50.0%	54	48	89.2%	6	10.8%
Masters & IBHE Certificate	2013	22	21	95.5%	1	4.5%	4	4	100.0%	0	0.0%	19.0%	0.0%	0	0	0.0%	0	0.0%	0.0%	0.0%	3	2	66.7%	1	33.3%
	2014	33	31	93.9%	2	6.1%	10	10	100.0%	0	0.0%	32.3%	0.0%	1	1	100.0%	0	0.0%	10.0%	0.0%	3	2	66.7%	1	33.3%
	2015	22	20	90.9%	2	9.1%	10	9	90.0%	1	10.0%	45.0%	50.0%	3	2	66.7%	1	33.3%	22.2%	100.0%	4	3	75.0%	1	25.0%
	2016	21	19	90.5%	2	9.5%	6	5	83.3%	1	16.7%	26.3%	50.0%	1	0	0.0%	1	100.0%	0.0%	100.0%	5	3	60.0%	2	40.0%
	2017	15	13	86.7%	2	13.3%	3	2	66.7%	1	33.3%	15.4%	50.0%	0	0	0.0%	0	0.0%	0.0%	0.0%	4	2	50.0%	2	50.0%
	Average	23	21	92.0%	2	8.0%	7	6	90.9%	1	9.1%	28.8%	33.3%	1	1	60.0%	0	40.0%	10.0%	66.7%	4	2	63.2%	1	36.8%
Doctorate	2013	61	54	88.5%	7	11.5%	12	11	91.7%	1	8.3%	20.4%	14.3%	6	5	83.3%	1	16.7%	45.5%	100.0%	51	47	92.2%	4	7.8%
	2014	61	54	88.5%	7	11.5%	14	12	85.7%	2	14.3%	22.2%	28.6%	6	6	100.0%	0	0.0%	50.0%	0.0%	49	46	93.9%	3	6.1%
	2015	42	37	88.1%	5	11.9%	11	7	63.6%	4	36.4%	18.9%	80.0%	6	4	66.7%	2	33.3%	57.1%	50.0%	50	45	90.0%	5	10.0%
	2016	50	42	84.0%	8	16.0%	13	9	69.2%	4	30.8%	21.4%	50.0%	7	5	71.4%	2	28.6%	55.6%	50.0%	51	46	90.2%	5	9.8%
	2017	38	34	89.5%	4	10.5%	9	7	77.8%	2	22.2%	20.6%	50.0%	5	4	80.0%	1	20.0%	57.1%	50.0%	49	44	89.8%	5	10.2%
	Average	50	44	87.7%	6	12.3%	12	9	78.0%	3	22.0%	20.8%	41.9%	6	5	80.0%	1	20.0%	52.2%	46.2%	50	46	91.2%	4	8.8%
Non-Degree & Campus Certificate	2013	0	0	0.0%	0	0.0%	0	0	0.0%	0	0.0%	0.0%	0.0%	0	0	0.0%	0	0.0%	0.0%	0.0%	0	0	0.0%	0	0.0%
	2014	0	0	0.0%	0	0.0%	0	0	0.0%	0	0.0%	0.0%	0.0%	0	0	0.0%	0	0.0%	0.0%	0.0%	0	0	0.0%	0	0.0%
	2015	0	0	0.0%	0	0.0%	0	0	0.0%	0	0.0%	0.0%	0.0%	0	0	0.0%	0	0.0%	0.0%	0.0%	0	0	0.0%	0	0.0%
	2016	0	0	0.0%	0	0.0%	0	0	0.0%	0	0.0%	0.0%	0.0%	0	0	0.0%	0	0.0%	0.0%	0.0%	0	0	0.0%	0	0.0%
	2017	0	0	0.0%	0	0.0%	0	0	0.0%	0	0.0%	0.0%	0.0%	0	0	0.0%	0	0.0%	0.0%	0.0%	0	0	0.0%	0	0.0%
	Average	0	0	0.0%	0	0.0%	0	0	0.0%	0	0.0%	0.0%	0.0%	0	0	0.0%	0	0.0%	0.0%	0.0%	0	0	0.0%	0	0.0%

Note: URM stands for Under-Represented Minority and includes American Indian or Alaska Native; Black or African-American; Hispanic / Latino race/ethnicity groups

**Applications - Total
by Race/Ethnicity**

History

Fall 2013 - Fall 2017

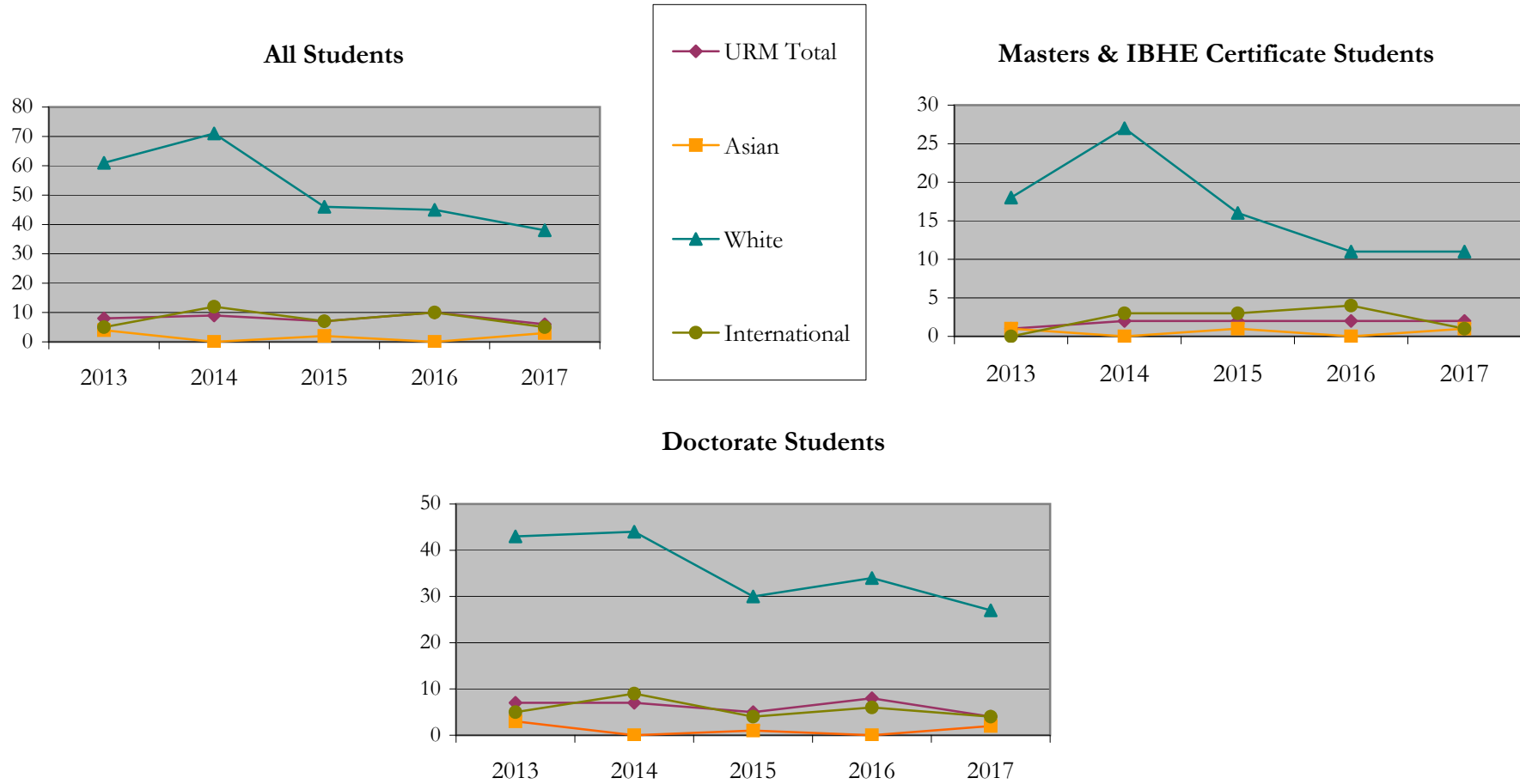
		Total	Under Represented Minorities (URM)																		
			American Indian or Alaska Native		Black or African American		Hispanic / Latino		URM Total		Asian		Native Hawaiian or Pacific Islander		White		Two or More Races		International		Not Reported
			Count	%	Count	%	Count	%	Count	%	Count	%	Count	%	Count	%	Count	%	Count	%	Count
All	2013	83	0	0.0	0	0.0	8	9.6	8	9.6	4	4.8	0	0.0	61	73.5	2	2.4	5	6.0	3
	2014	94	0	0.0	3	3.2	6	6.4	9	9.6	0	0.0	0	0.0	71	75.5	0	0.0	12	12.8	2
	2015	64	1	1.6	4	6.3	2	3.1	7	10.9	2	3.1	0	0.0	46	71.9	2	3.1	7	10.9	0
	2016	71	0	0.0	3	4.2	7	9.9	10	14.1	0	0.0	0	0.0	45	63.4	2	2.8	10	14.1	4
	2017	53	0	0.0	2	3.8	4	7.5	6	11.3	3	5.7	0	0.0	38	71.7	1	1.9	5	9.4	0
Masters & IBHE Certificate	2013	22	0	0.0	0	0.0	1	4.5	1	4.5	1	4.5	0	0.0	18	81.8	2	9.1	0	0.0	0
	2014	33	0	0.0	0	0.0	2	6.1	2	6.1	0	0.0	0	0.0	27	81.8	0	0.0	3	9.1	1
	2015	22	0	0.0	1	4.5	1	4.5	2	9.1	1	4.5	0	0.0	16	72.7	0	0.0	3	13.6	0
	2016	21	0	0.0	0	0.0	2	9.5	2	9.5	0	0.0	0	0.0	11	52.4	2	9.5	4	19.0	2
	2017	15	0	0.0	1	6.7	1	6.7	2	13.3	1	6.7	0	0.0	11	73.3	0	0.0	1	6.7	0
Doctorate	2013	61	0	0.0	0	0.0	7	11.5	7	11.5	3	4.9	0	0.0	43	70.5	0	0.0	5	8.2	3
	2014	61	0	0.0	3	4.9	4	6.6	7	11.5	0	0.0	0	0.0	44	72.1	0	0.0	9	14.8	1
	2015	42	1	2.4	3	7.1	1	2.4	5	11.9	1	2.4	0	0.0	30	71.4	2	4.8	4	9.5	0
	2016	50	0	0.0	3	6.0	5	10.0	8	16.0	0	0.0	0	0.0	34	68.0	0	0.0	6	12.0	2
	2017	38	0	0.0	1	2.6	3	7.9	4	10.5	2	5.3	0	0.0	27	71.1	1	2.6	4	10.5	0
Non-Degree & Campus Certificate	2013	0	0	0.0	0	0.0	0	0.0	0	0.0	0	0.0	0	0.0	0	0.0	0	0.0	0	0.0	0
	2014	0	0	0.0	0	0.0	0	0.0	0	0.0	0	0.0	0	0.0	0	0.0	0	0.0	0	0.0	0
	2015	0	0	0.0	0	0.0	0	0.0	0	0.0	0	0.0	0	0.0	0	0.0	0	0.0	0	0.0	0
	2016	0	0	0.0	0	0.0	0	0.0	0	0.0	0	0.0	0	0.0	0	0.0	0	0.0	0	0.0	0
	2017	0	0	0.0	0	0.0	0	0.0	0	0.0	0	0.0	0	0.0	0	0.0	0	0.0	0	0.0	0

Note: URM stands for Under-Represented Minority and includes American Indian or Alaska Native; Black or African-American; Hispanic / Latino race/ethnicity groups

Applications - Total by Race/Ethnicity

History

Fall 2013 - Fall 2017



Notes: 1) URM stands for Under-Represented Minority and includes American Indian or Alaska Native; Black or African-American; Hispanic / Latino race/ethnicity groups

2) Individual URM groups, Native Hawaiian Pacific Islander, Two or More Races, and Other race/ethnicity categories left off this charts due to relatively low numbers

**Applications - Admitted
by Race/Ethnicity**

History

Fall 2013 - Fall 2017

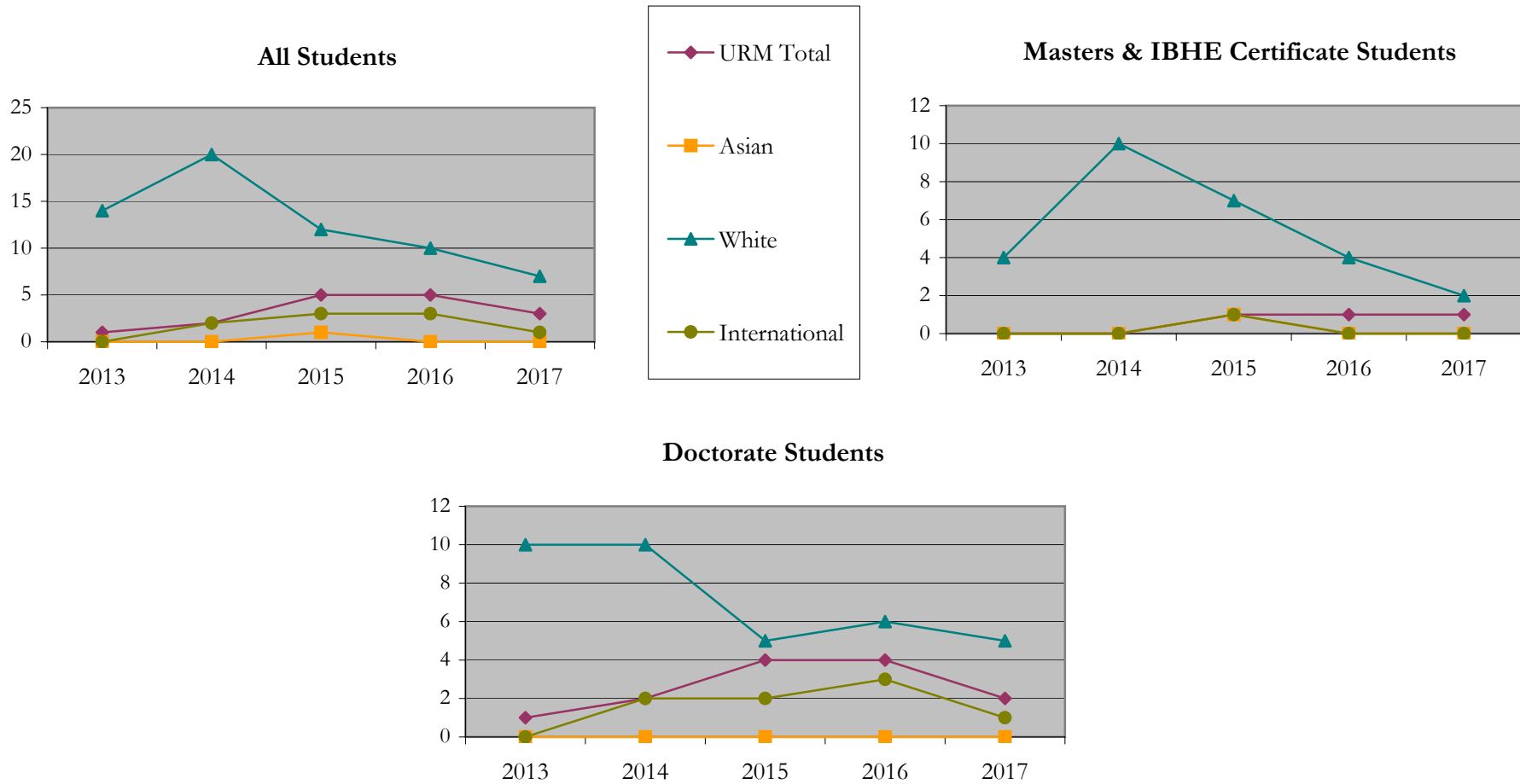
		Total	Under Represented Minorities (URM)								Asian		Native Hawaiian or Pacific Islander		White		Two or More Races		International		Not Reported
			American Indian or Alaska Native		Black or African American		Hispanic / Latino		URM Total												
			Count	%	Count	%	Count	%	Count	%											
All	2013	16	0	0.0	0	0.0	1	6.3	1	6.3	0	0.0	0	0.0	14	87.5	0	0.0	0	0.0	1
	2014	24	0	0.0	1	4.2	1	4.2	2	8.3	0	0.0	0	0.0	20	83.3	0	0.0	2	8.3	0
	2015	21	1	4.8	3	14.3	1	4.8	5	23.8	1	4.8	0	0.0	12	57.1	0	0.0	3	14.3	0
	2016	19	0	0.0	1	5.3	4	21.1	5	26.3	0	0.0	0	0.0	10	52.6	0	0.0	3	15.8	1
	2017	12	0	0.0	0	0.0	3	25.0	3	25.0	0	0.0	0	0.0	7	58.3	1	8.3	1	8.3	0
Masters & IBHE Certificate	2013	4	0	0.0	0	0.0	0	0.0	0	0.0	0	0.0	0	0.0	4	100.0	0	0.0	0	0.0	0
	2014	10	0	0.0	0	0.0	0	0.0	0	0.0	0	0.0	0	0.0	10	100.0	0	0.0	0	0.0	0
	2015	10	0	0.0	0	0.0	1	10.0	1	10.0	1	10.0	0	0.0	7	70.0	0	0.0	1	10.0	0
	2016	6	0	0.0	0	0.0	1	16.7	1	16.7	0	0.0	0	0.0	4	66.7	0	0.0	0	0.0	1
	2017	3	0	0.0	0	0.0	1	33.3	1	33.3	0	0.0	0	0.0	2	66.7	0	0.0	0	0.0	0
Doctorate	2013	12	0	0.0	0	0.0	1	8.3	1	8.3	0	0.0	0	0.0	10	83.3	0	0.0	0	0.0	1
	2014	14	0	0.0	1	7.1	1	7.1	2	14.3	0	0.0	0	0.0	10	71.4	0	0.0	2	14.3	0
	2015	11	1	9.1	3	27.3	0	0.0	4	36.4	0	0.0	0	0.0	5	45.5	0	0.0	2	18.2	0
	2016	13	0	0.0	1	7.7	3	23.1	4	30.8	0	0.0	0	0.0	6	46.2	0	0.0	3	23.1	0
	2017	9	0	0.0	0	0.0	2	22.2	2	22.2	0	0.0	0	0.0	5	55.6	1	11.1	1	11.1	0
Non-Degree & Campus Certificate	2013	0	0	0.0	0	0.0	0	0.0	0	0.0	0	0.0	0	0.0	0	0.0	0	0.0	0	0.0	0
	2014	0	0	0.0	0	0.0	0	0.0	0	0.0	0	0.0	0	0.0	0	0.0	0	0.0	0	0.0	0
	2015	0	0	0.0	0	0.0	0	0.0	0	0.0	0	0.0	0	0.0	0	0.0	0	0.0	0	0.0	0
	2016	0	0	0.0	0	0.0	0	0.0	0	0.0	0	0.0	0	0.0	0	0.0	0	0.0	0	0.0	0
	2017	0	0	0.0	0	0.0	0	0.0	0	0.0	0	0.0	0	0.0	0	0.0	0	0.0	0	0.0	0

Note: URM stands for Under-Represented Minority and includes American Indian or Alaska Native; Black or African-American; Hispanic / Latino race/ethnicity groups

Applications - Admitted by Race/Ethnicity

History

Fall 2013 - Fall 2017



Notes: 1) URM stands for Under-Represented Minority and includes American Indian or Alaska Native; Black or African-American; Hispanic / Latino race/ethnicity groups

2) Individual URM groups, Native Hawaiian Pacific Islander, Two or More Races, and Other race/ethnicity categories left off this charts due to relatively low numbers

**Enrollment - New
by Race/Ethnicity**

History

Fall 2013 - Fall 2017

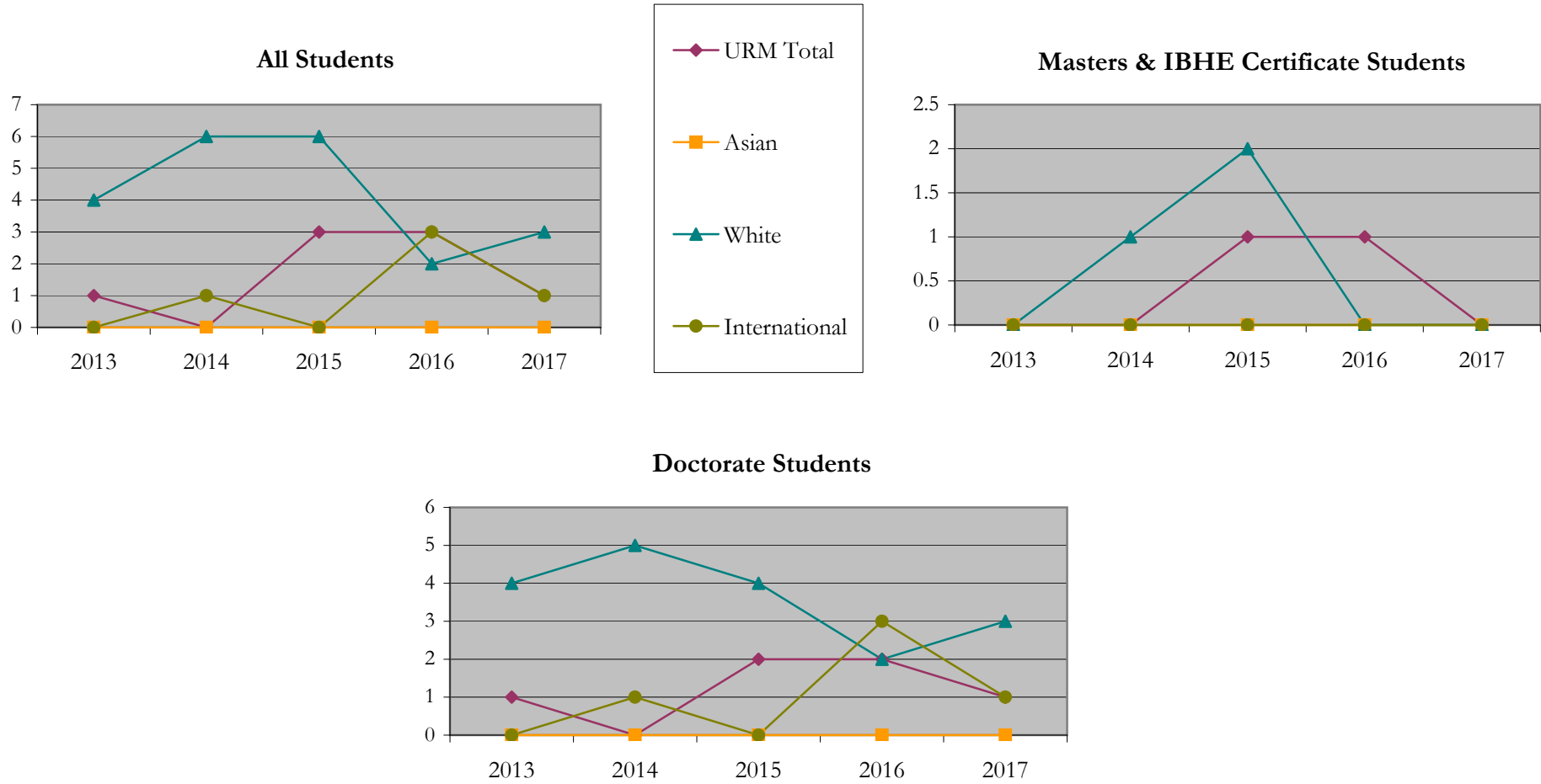
		Total	Under Represented Minorities (URM)								Asian		Native Hawaiian or Pacific Islander		White		Two or More Races		International		Not Reported
			American Indian or Alaska Native		Black or African American		Hispanic / Latino		URM Total												
			Count	%	Count	%	Count	%	Count	%											
All	2013	6	0	0.0	0	0.0	1	16.7	1	16.7	0	0.0	0	0.0	4	66.7	0	0.0	0	0.0	1
	2014	7	0	0.0	0	0.0	0	0.0	0	0.0	0	0.0	0	0.0	6	85.7	0	0.0	1	14.3	0
	2015	9	0	0.0	2	22.2	1	11.1	3	33.3	0	0.0	0	0.0	6	66.7	0	0.0	0	0.0	0
	2016	8	0	0.0	0	0.0	3	37.5	3	37.5	0	0.0	0	0.0	2	25.0	0	0.0	3	37.5	0
	2017	5	0	0.0	0	0.0	1	20.0	1	20.0	0	0.0	0	0.0	3	60.0	0	0.0	1	20.0	0
Masters & IBHE Certificate	2013	0	0	0.0	0	0.0	0	0.0	0	0.0	0	0.0	0	0.0	0	0.0	0	0.0	0	0.0	0
	2014	1	0	0.0	0	0.0	0	0.0	0	0.0	0	0.0	0	0.0	1	100.0	0	0.0	0	0.0	0
	2015	3	0	0.0	0	0.0	1	33.3	1	33.3	0	0.0	0	0.0	2	66.7	0	0.0	0	0.0	0
	2016	1	0	0.0	0	0.0	1	100.0	1	100.0	0	0.0	0	0.0	0	0.0	0	0.0	0	0.0	0
	2017	0	0	0.0	0	0.0	0	0.0	0	0.0	0	0.0	0	0.0	0	0.0	0	0.0	0	0.0	0
Doctorate	2013	6	0	0.0	0	0.0	1	16.7	1	16.7	0	0.0	0	0.0	4	66.7	0	0.0	0	0.0	1
	2014	6	0	0.0	0	0.0	0	0.0	0	0.0	0	0.0	0	0.0	5	83.3	0	0.0	1	16.7	0
	2015	6	0	0.0	2	33.3	0	0.0	2	33.3	0	0.0	0	0.0	4	66.7	0	0.0	0	0.0	0
	2016	7	0	0.0	0	0.0	2	28.6	2	28.6	0	0.0	0	0.0	2	28.6	0	0.0	3	42.9	0
	2017	5	0	0.0	0	0.0	1	20.0	1	20.0	0	0.0	0	0.0	3	60.0	0	0.0	1	20.0	0
Non-Degree & Campus Certificate	2013	0	0	0.0	0	0.0	0	0.0	0	0.0	0	0.0	0	0.0	0	0.0	0	0.0	0	0.0	0
	2014	0	0	0.0	0	0.0	0	0.0	0	0.0	0	0.0	0	0.0	0	0.0	0	0.0	0	0.0	0
	2015	0	0	0.0	0	0.0	0	0.0	0	0.0	0	0.0	0	0.0	0	0.0	0	0.0	0	0.0	0
	2016	0	0	0.0	0	0.0	0	0.0	0	0.0	0	0.0	0	0.0	0	0.0	0	0.0	0	0.0	0
	2017	0	0	0.0	0	0.0	0	0.0	0	0.0	0	0.0	0	0.0	0	0.0	0	0.0	0	0.0	0

Note: URM stands for Under-Represented Minority and includes American Indian or Alaska Native; Black or African-American; Hispanic / Latino race/ethnicity groups

Enrollment - New by Race/Ethnicity

History

Fall 2013 - Fall 2017



Notes: 1) URM stands for Under-Represented Minority and includes American Indian or Alaska Native; Black or African-American; Hispanic / Latino race/ethnicity groups

2) Individual URM groups, Native Hawaiian Pacific Islander, Two or More Races, and Other race/ethnicity categories left off this charts due to relatively low numbers

**Enrollment - Total
by Race/Ethnicity**

History

Fall 2013 - Fall 2017

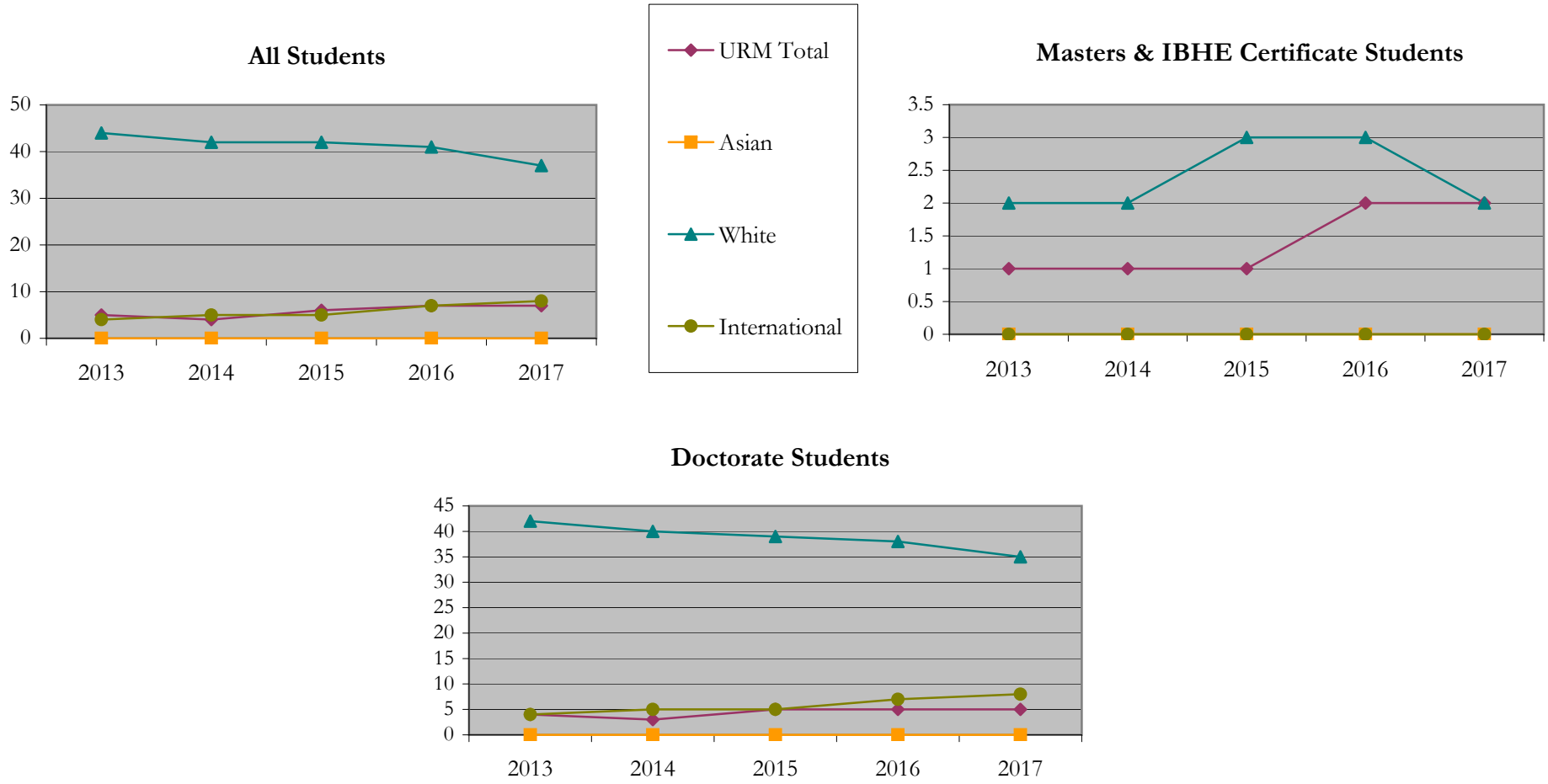
		Total	Under Represented Minorities (URM)								Asian		Native Hawaiian or Pacific Islander		White		Two or More Races		International		Not Reported
			American Indian or Alaska Native		Black or African American		Hispanic / Latino		URM Total												
			Count	%	Count	%	Count	%	Count	%											
All	2013	54	0	0.0	1	1.9	4	7.4	5	9.3	0	0.0	0	0.0	44	81.5	0	0.0	4	7.4	1
	2014	52	0	0.0	0	0.0	4	7.7	4	7.7	0	0.0	0	0.0	42	80.8	0	0.0	5	9.6	1
	2015	54	0	0.0	2	3.7	4	7.4	6	11.1	0	0.0	0	0.0	42	77.8	0	0.0	5	9.3	1
	2016	56	0	0.0	2	3.6	5	8.9	7	12.5	0	0.0	0	0.0	41	73.2	0	0.0	7	12.5	1
	2017	53	0	0.0	2	3.8	5	9.4	7	13.2	0	0.0	0	0.0	37	69.8	0	0.0	8	15.1	1
Masters & IBHE Certificate	2013	3	0	0.0	0	0.0	1	33.3	1	33.3	0	0.0	0	0.0	2	66.7	0	0.0	0	0.0	0
	2014	3	0	0.0	0	0.0	1	33.3	1	33.3	0	0.0	0	0.0	2	66.7	0	0.0	0	0.0	0
	2015	4	0	0.0	0	0.0	1	25.0	1	25.0	0	0.0	0	0.0	3	75.0	0	0.0	0	0.0	0
	2016	5	0	0.0	0	0.0	2	40.0	2	40.0	0	0.0	0	0.0	3	60.0	0	0.0	0	0.0	0
	2017	4	0	0.0	0	0.0	2	50.0	2	50.0	0	0.0	0	0.0	2	50.0	0	0.0	0	0.0	0
Doctorate	2013	51	0	0.0	1	2.0	3	5.9	4	7.8	0	0.0	0	0.0	42	82.4	0	0.0	4	7.8	1
	2014	49	0	0.0	0	0.0	3	6.1	3	6.1	0	0.0	0	0.0	40	81.6	0	0.0	5	10.2	1
	2015	50	0	0.0	2	4.0	3	6.0	5	10.0	0	0.0	0	0.0	39	78.0	0	0.0	5	10.0	1
	2016	51	0	0.0	2	3.9	3	5.9	5	9.8	0	0.0	0	0.0	38	74.5	0	0.0	7	13.7	1
	2017	49	0	0.0	2	4.1	3	6.1	5	10.2	0	0.0	0	0.0	35	71.4	0	0.0	8	16.3	1
Non-Degree & Campus Certificate	2013	0	0	0.0	0	0.0	0	0.0	0	0.0	0	0.0	0	0.0	0	0.0	0	0.0	0	0.0	0
	2014	0	0	0.0	0	0.0	0	0.0	0	0.0	0	0.0	0	0.0	0	0.0	0	0.0	0	0.0	0
	2015	0	0	0.0	0	0.0	0	0.0	0	0.0	0	0.0	0	0.0	0	0.0	0	0.0	0	0.0	0
	2016	0	0	0.0	0	0.0	0	0.0	0	0.0	0	0.0	0	0.0	0	0.0	0	0.0	0	0.0	0
	2017	0	0	0.0	0	0.0	0	0.0	0	0.0	0	0.0	0	0.0	0	0.0	0	0.0	0	0.0	0

Note: URM stands for Under-Represented Minority and includes American Indian or Alaska Native; Black or African-American; Hispanic / Latino race/ethnicity groups

Enrollment - Total by Race/Ethnicity

History

Fall 2013 - Fall 2017



Notes: 1) URM stands for Under-Represented Minority and includes American Indian or Alaska Native; Black or African-American; Hispanic / Latino race/ethnicity groups

2) Individual URM groups, Native Hawaiian Pacific Islander, Two or More Races, and Other race/ethnicity categories left off this charts due to relatively low numbers

Enrollment
by Student Type, Enrollment Time, and Gender

History

Fall 2013 - Fall 2017

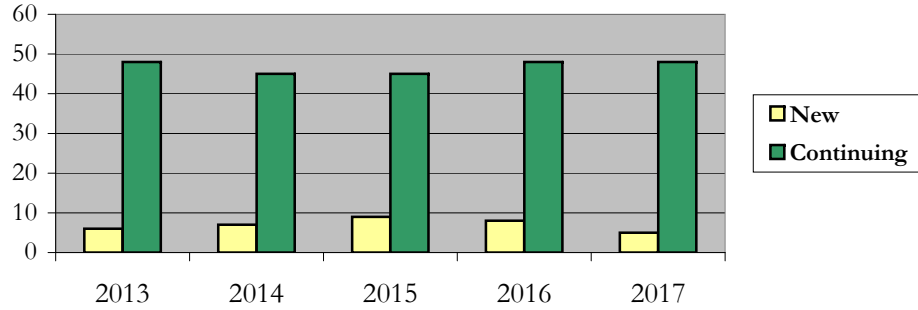
		Total	New		Continuing		Male		Female		Gender Not Reported	Part-time		Full-time	
			Count	%	Count	%	Count	%	Count	%		Count	%	Count	%
All	2013	54	6	11.1	48	88.9	34	63.0	20	37.0	0	15	27.8	39	72.2
	2014	52	7	13.5	45	86.5	30	57.7	22	42.3	0	11	21.2	41	78.8
	2015	54	9	16.7	45	83.3	32	59.3	22	40.7	0	12	22.2	42	77.8
	2016	56	8	14.3	48	85.7	32	57.1	24	42.9	0	11	19.6	45	80.4
	2017	53	5	9.4	48	90.6	30	56.6	23	43.4	0	10	18.9	43	81.1
Masters & IBHE Certificate	2013	3	0	0.0	3	100.0	2	66.7	1	33.3	0	2	66.7	1	33.3
	2014	3	1	33.3	2	66.7	2	66.7	1	33.3	0	1	33.3	2	66.7
	2015	4	3	75.0	1	25.0	3	75.0	1	25.0	0	2	50.0	2	50.0
	2016	5	1	20.0	4	80.0	5	100.0	0	0.0	0	2	40.0	3	60.0
	2017	4	0	0.0	4	100.0	4	100.0	0	0.0	0	1	25.0	3	75.0
Doctorate	2013	51	6	11.8	45	88.2	32	62.7	19	37.3	0	13	25.5	38	74.5
	2014	49	6	12.2	43	87.8	28	57.1	21	42.9	0	10	20.4	39	79.6
	2015	50	6	12.0	44	88.0	29	58.0	21	42.0	0	10	20.0	40	80.0
	2016	51	7	13.7	44	86.3	27	52.9	24	47.1	0	9	17.6	42	82.4
	2017	49	5	10.2	44	89.8	26	53.1	23	46.9	0	9	18.4	40	81.6
Non-Degree & Campus Certificate	2013	0	0	0.0	0	0.0	0	0.0	0	0.0	0	0	0.0	0	0.0
	2014	0	0	0.0	0	0.0	0	0.0	0	0.0	0	0	0.0	0	0.0
	2015	0	0	0.0	0	0.0	0	0.0	0	0.0	0	0	0.0	0	0.0
	2016	0	0	0.0	0	0.0	0	0.0	0	0.0	0	0	0.0	0	0.0
	2017	0	0	0.0	0	0.0	0	0.0	0	0.0	0	0	0.0	0	0.0

Enrollment by Student Type, Enrollment Time, and Gender (All Students)

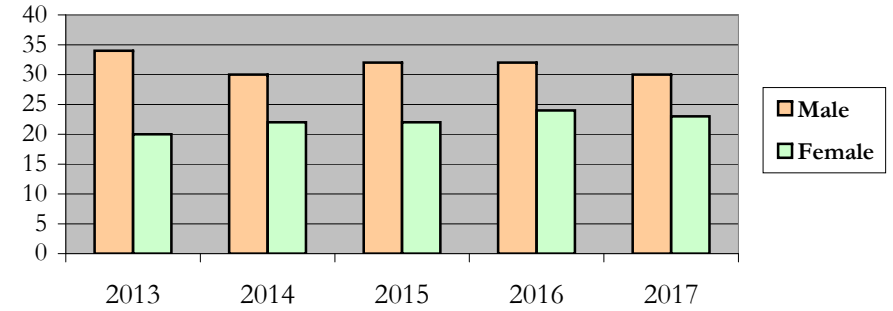
History

Fall 2013 - Fall 2017

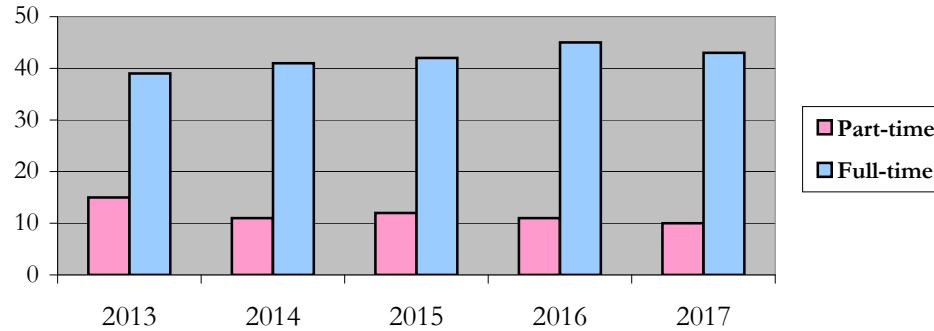
New and Continuing Enrollment



Enrollment by Gender



Enrollment by Student Enrollment Time

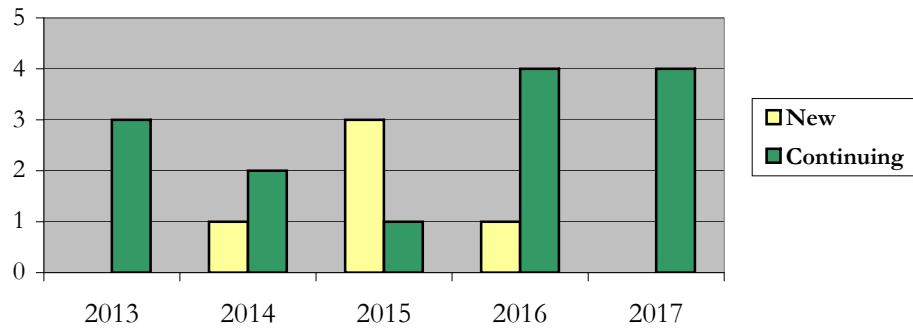


Enrollment by Student Type, Enrollment Time, and Gender (Master's Students)

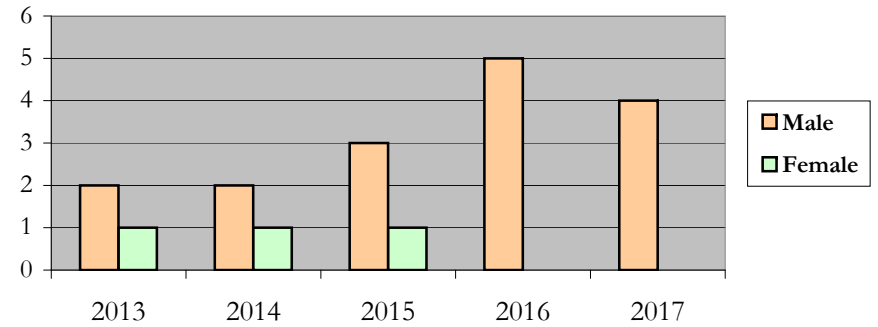
History

Fall 2013 - Fall 2017

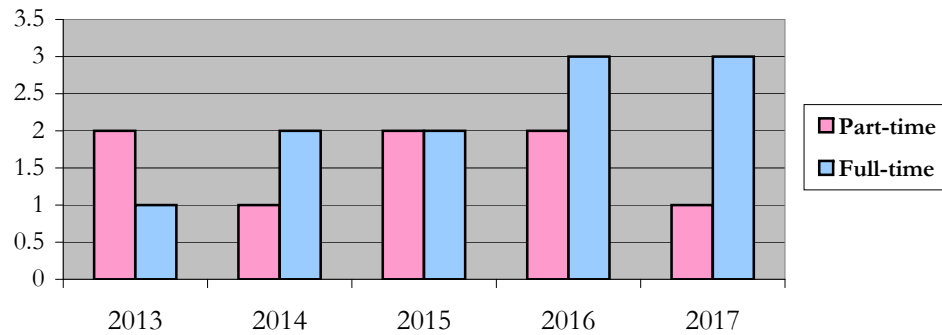
New and Continuing Enrollment



Enrollment by Gender



Enrollment by Student Enrollment Time

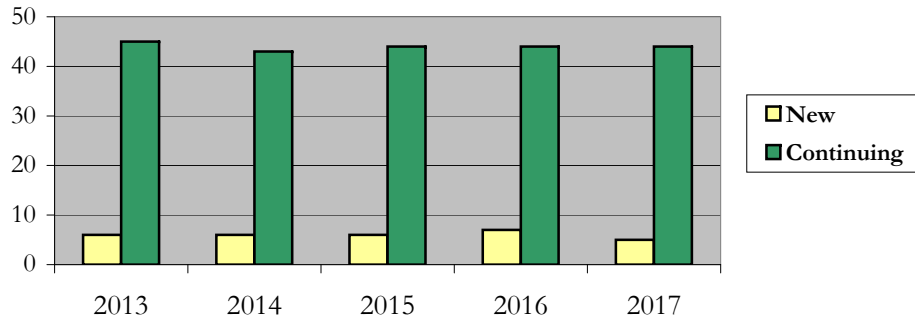


Enrollment by Student Type, Enrollment Time, and Gender (Doctorate Students)

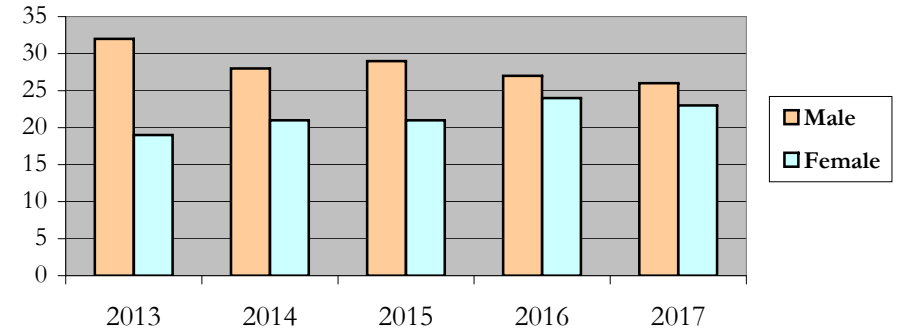
History

Fall 2013 - Fall 2017

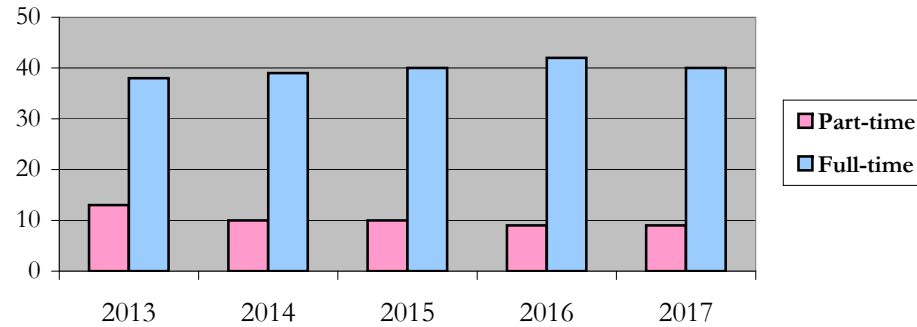
New and Continuing Enrollment



Enrollment by Gender



Enrollment by Student Enrollment Time



Degrees Conferred by Race/Ethnicity

History

Fall 2013 - Fall 2017

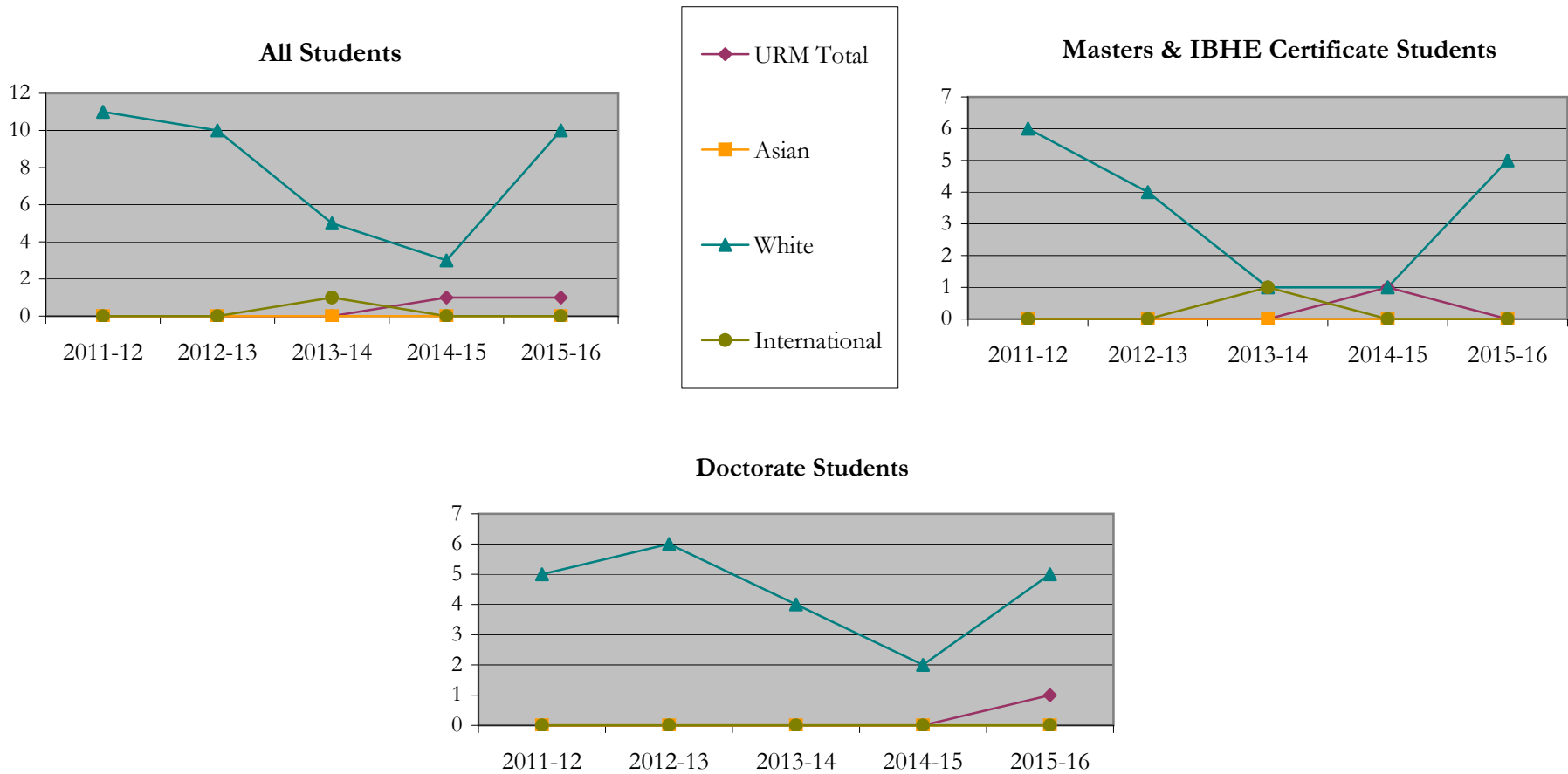
		Total	Under Represented Minorities (URM)								Asian	Native Hawaiian or Pacific Islander	White	Two or More Races	International	Not Reported					
			American Indian or Alaska Native		Black or African American		Hispanic / Latino		URM Total												
			Count	%	Count	%	Count	%	Count	%							Count	%	Count	%	Count
All	2012 - 13	11	0	0.0	0	0.0	0	0.0	0	0.0	0	0.0	0	0.0	11	100.0	0	0.0	0	0.0	0
	2013 - 14	10	0	0.0	0	0.0	0	0.0	0	0.0	0	0.0	0	0.0	10	100.0	0	0.0	0	0.0	0
	2014 - 15	6	0	0.0	0	0.0	0	0.0	0	0.0	0	0.0	0	0.0	5	83.3	0	0.0	1	16.7	0
	2015 - 16	4	0	0.0	0	0.0	1	25.0	1	25.0	0	0.0	0	0.0	3	75.0	0	0.0	0	0.0	0
	2016 - 17	11	0	0.0	0	0.0	1	9.1	1	9.1	0	0.0	0	0.0	10	90.9	0	0.0	0	0.0	0
Masters & IBHE Certificate	2012 - 13	6	0	0.0	0	0.0	0	0.0	0	0.0	0	0.0	0	0.0	6	100.0	0	0.0	0	0.0	0
	2013 - 14	4	0	0.0	0	0.0	0	0.0	0	0.0	0	0.0	0	0.0	4	100.0	0	0.0	0	0.0	0
	2014 - 15	2	0	0.0	0	0.0	0	0.0	0	0.0	0	0.0	0	0.0	1	50.0	0	0.0	1	50.0	0
	2015 - 16	2	0	0.0	0	0.0	1	50.0	1	50.0	0	0.0	0	0.0	1	50.0	0	0.0	0	0.0	0
	2016 - 17	5	0	0.0	0	0.0	0	0.0	0	0.0	0	0.0	0	0.0	5	100.0	0	0.0	0	0.0	0
Doctorate	2012 - 13	5	0	0.0	0	0.0	0	0.0	0	0.0	0	0.0	0	0.0	5	100.0	0	0.0	0	0.0	0
	2013 - 14	6	0	0.0	0	0.0	0	0.0	0	0.0	0	0.0	0	0.0	6	100.0	0	0.0	0	0.0	0
	2014 - 15	4	0	0.0	0	0.0	0	0.0	0	0.0	0	0.0	0	0.0	4	100.0	0	0.0	0	0.0	0
	2015 - 16	2	0	0.0	0	0.0	0	0.0	0	0.0	0	0.0	0	0.0	2	100.0	0	0.0	0	0.0	0
	2016 - 17	6	0	0.0	0	0.0	1	16.7	1	16.7	0	0.0	0	0.0	5	83.3	0	0.0	0	0.0	0
Non-Degree & Campus Certificate	2012 - 13	0	0	0.0	0	0.0	0	0.0	0	0.0	0	0.0	0	0.0	0	0.0	0	0.0	0	0.0	0
	2013 - 14	0	0	0.0	0	0.0	0	0.0	0	0.0	0	0.0	0	0.0	0	0.0	0	0.0	0	0.0	0
	2014 - 15	0	0	0.0	0	0.0	0	0.0	0	0.0	0	0.0	0	0.0	0	0.0	0	0.0	0	0.0	0
	2015 - 16	0	0	0.0	0	0.0	0	0.0	0	0.0	0	0.0	0	0.0	0	0.0	0	0.0	0	0.0	0
	2016 - 17	0	0	0.0	0	0.0	0	0.0	0	0.0	0	0.0	0	0.0	0	0.0	0	0.0	0	0.0	0

Note: Each row represents a fiscal year, beginning with Summer term and ending with Spring.

Degrees Conferred by Race/Ethnicity

History

Fall 2013 - Fall 2017



Notes: 1) URM stands for Under-Represented Minority and includes American Indian or Alaska Native; Black or African-American; Hispanic / Latino race/ethnicity groups

2) Individual URM groups, Native Hawaiian Pacific Islander, Two or More Races, and Other race/ethnicity categories left off this charts due to relatively low numbers

Degrees Conferred
by Gender

History

Fall 2013 - Fall 2017

		Total	Male		Female		Not Reported
			Count	%	Count	%	
All	2012 - 13	11	4	36.4	6	54.5	1
	2013 - 14	10	6	60.0	4	40.0	0
	2014 - 15	6	3	50.0	3	50.0	0
	2015 - 16	4	2	50.0	2	50.0	0
	2016 - 17	11	9	81.8	2	18.2	0
Masters & IBHE Certificate	2012 - 13	6	3	50.0	2	33.3	1
	2013 - 14	4	1	25.0	3	75.0	0
	2014 - 15	2	1	50.0	1	50.0	0
	2015 - 16	2	1	50.0	1	50.0	0
	2016 - 17	5	3	60.0	2	40.0	0
Doctorate	2012 - 13	5	1	20.0	4	80.0	0
	2013 - 14	6	5	83.3	1	16.7	0
	2014 - 15	4	2	50.0	2	50.0	0
	2015 - 16	2	1	50.0	1	50.0	0
	2016 - 17	6	6	100.0	0	0.0	0
Campus Certificates	2012 - 13	0	0	0.0	0	0.0	0
	2013 - 14	0	0	0.0	0	0.0	0
	2014 - 15	0	0	0.0	0	0.0	0
	2015 - 16	0	0	0.0	0	0.0	0
	2016 - 17	0	0	0.0	0	0.0	0

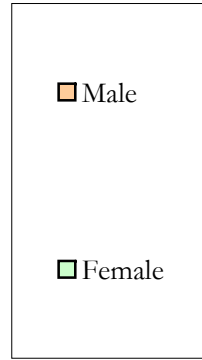
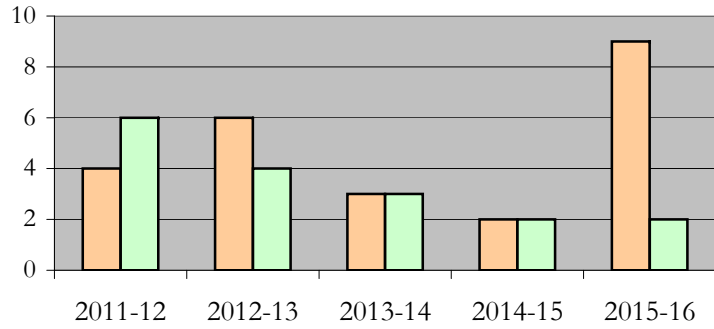
Note: Each row represents a fiscal year, beginning with Summer term and ending with Spring.

Degrees Conferred by Gender

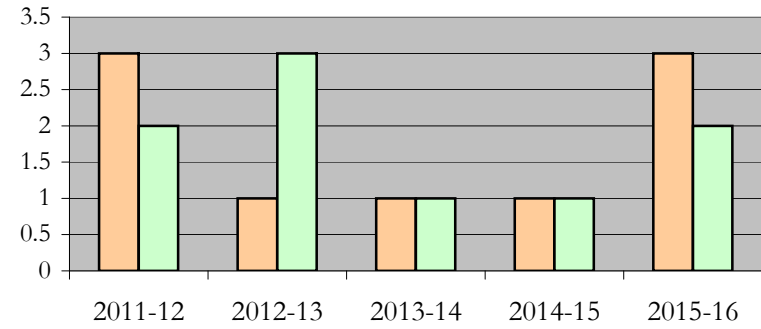
History

Fall 2013 - Fall 2017

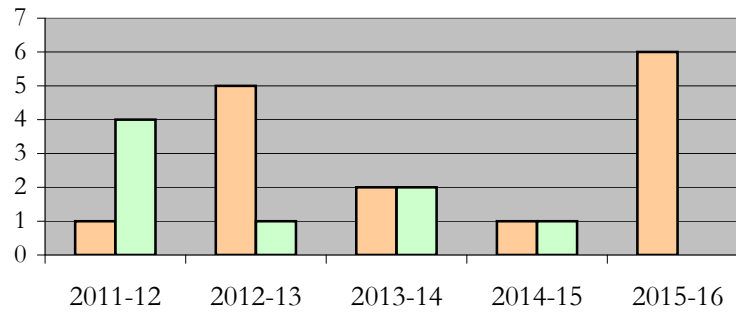
All Students



Masters & IBHE Certificate Students



Doctorate Students



Appendix A

History

Fall 2013 - Fall 2017

List of program codes included in this document

20FS0342PHD

20FS0342MA

Notes: 1) Program codes are sorted by alphabetical order in column-wise fashion

2) Program codes highlighted in yellow did not have applications, enrollment, nor degrees conferred in the covered period