

Matriculation

Diversity Pipeline

Hispanic Studies

Fall 2013 - Fall 2017

	Fall Semester Year	Applied					Admitted					Non-URM Admitted to Applied Yield %	URM Admitted to Applied Yield %	New Enrollment					Non-URM Enrolled to Admitted Yield %	URM Enrolled to Admitted Yield %	Total Enrollment				
		Grand Total	Non-URM Total		URM Total		Grand Total	Non-URM Total		URM Total				Grand Total	Non-URM Total		URM Total				Grand Total	Non-URM Total		URM Total	
			Count	%	Count	%		Count	%	Count	%				Count	%	Count	%				Count	%	Count	%
All	2013	59	48	81.4%	11	18.6%	26	23	88.5%	3	11.5%	47.9%	27.3%	13	12	92.3%	1	7.7%	52.2%	33.3%	53	39	73.6%	14	26.4%
	2014	40	29	72.5%	11	27.5%	18	15	83.3%	3	16.7%	51.7%	27.3%	9	8	88.9%	1	11.1%	53.3%	33.3%	49	38	77.6%	11	22.4%
	2015	50	34	68.0%	16	32.0%	18	10	55.6%	8	44.4%	29.4%	50.0%	9	2	22.2%	7	77.8%	20.0%	87.5%	43	25	58.1%	18	41.9%
	2016	44	30	68.2%	14	31.8%	26	19	73.1%	7	26.9%	63.3%	50.0%	13	7	53.8%	6	46.2%	36.8%	85.7%	49	26	53.1%	23	46.9%
	2017	44	29	65.9%	15	34.1%	21	15	71.4%	6	28.6%	51.7%	40.0%	8	7	87.5%	1	12.5%	46.7%	16.7%	47	30	63.8%	17	36.2%
	Average	47	34	71.7%	13	28.3%	22	16	75.2%	5	24.8%	48.2%	40.3%	10	7	69.2%	3	30.8%	43.9%	59.3%	48	32	65.6%	17	34.4%
Masters & IBHE Certificate	2013	27	25	92.6%	2	7.4%	14	14	100.0%	0	0.0%	56.0%	0.0%	9	9	100.0%	0	0.0%	64.3%	0.0%	16	13	81.3%	3	18.8%
	2014	18	11	61.1%	7	38.9%	9	7	77.8%	2	22.2%	63.6%	28.6%	5	4	80.0%	1	20.0%	57.1%	50.0%	15	14	93.3%	1	6.7%
	2015	21	17	81.0%	4	19.0%	12	8	66.7%	4	33.3%	47.1%	100.0%	6	2	33.3%	4	66.7%	25.0%	100.0%	10	5	50.0%	5	50.0%
	2016	20	13	65.0%	7	35.0%	13	9	69.2%	4	30.8%	69.2%	57.1%	8	5	62.5%	3	37.5%	55.6%	75.0%	15	7	46.7%	8	53.3%
	2017	25	15	60.0%	10	40.0%	14	9	64.3%	5	35.7%	60.0%	50.0%	6	6	100.0%	0	0.0%	66.7%	0.0%	13	11	84.6%	2	15.4%
	Average	22	16	73.0%	6	27.0%	12	9	75.8%	3	24.2%	58.0%	50.0%	7	5	76.5%	2	23.5%	55.3%	53.3%	14	10	72.5%	4	27.5%
Doctorate	2013	32	23	71.9%	9	28.1%	12	9	75.0%	3	25.0%	39.1%	33.3%	4	3	75.0%	1	25.0%	33.3%	33.3%	37	26	70.3%	11	29.7%
	2014	22	18	81.8%	4	18.2%	9	8	88.9%	1	11.1%	44.4%	25.0%	4	4	100.0%	0	0.0%	50.0%	0.0%	34	24	70.6%	10	29.4%
	2015	29	17	58.6%	12	41.4%	6	2	33.3%	4	66.7%	11.8%	33.3%	3	0	0.0%	3	100.0%	0.0%	75.0%	33	20	60.6%	13	39.4%
	2016	24	17	70.8%	7	29.2%	13	10	76.9%	3	23.1%	58.8%	42.9%	5	2	40.0%	3	60.0%	20.0%	100.0%	34	19	55.9%	15	44.1%
	2017	19	14	73.7%	5	26.3%	7	6	85.7%	1	14.3%	42.9%	20.0%	2	1	50.0%	1	50.0%	16.7%	100.0%	34	19	55.9%	15	44.1%
	Average	25	18	70.6%	7	29.4%	9	7	74.5%	2	25.5%	39.3%	32.4%	4	2	55.6%	2	44.4%	28.6%	66.7%	34	22	62.8%	13	37.2%
Non-Degree & Campus Certificate	2013	0	0	0.0%	0	0.0%	0	0	0.0%	0	0.0%	0.0%	0.0%	0	0	0.0%	0	0.0%	0.0%	0.0%	0	0	0.0%	0	0.0%
	2014	0	0	0.0%	0	0.0%	0	0	0.0%	0	0.0%	0.0%	0.0%	0	0	0.0%	0	0.0%	0.0%	0.0%	0	0	0.0%	0	0.0%
	2015	0	0	0.0%	0	0.0%	0	0	0.0%	0	0.0%	0.0%	0.0%	0	0	0.0%	0	0.0%	0.0%	0.0%	0	0	0.0%	0	0.0%
	2016	0	0	0.0%	0	0.0%	0	0	0.0%	0	0.0%	0.0%	0.0%	0	0	0.0%	0	0.0%	0.0%	0.0%	0	0	0.0%	0	0.0%
	2017	0	0	0.0%	0	0.0%	0	0	0.0%	0	0.0%	0.0%	0.0%	0	0	0.0%	0	0.0%	0.0%	0.0%	0	0	0.0%	0	0.0%
	Average	0	0	0.0%	0	0.0%	0	0	0.0%	0	0.0%	0.0%	0.0%	0	0	0.0%	0	0.0%	0.0%	0.0%	0	0	0.0%	0	0.0%

Note: URM stands for Under-Represented Minority and includes American Indian or Alaska Native; Black or African-American; Hispanic / Latino race/ethnicity groups

**Applications - Total
by Race/Ethnicity**

Hispanic Studies

Fall 2013 - Fall 2017

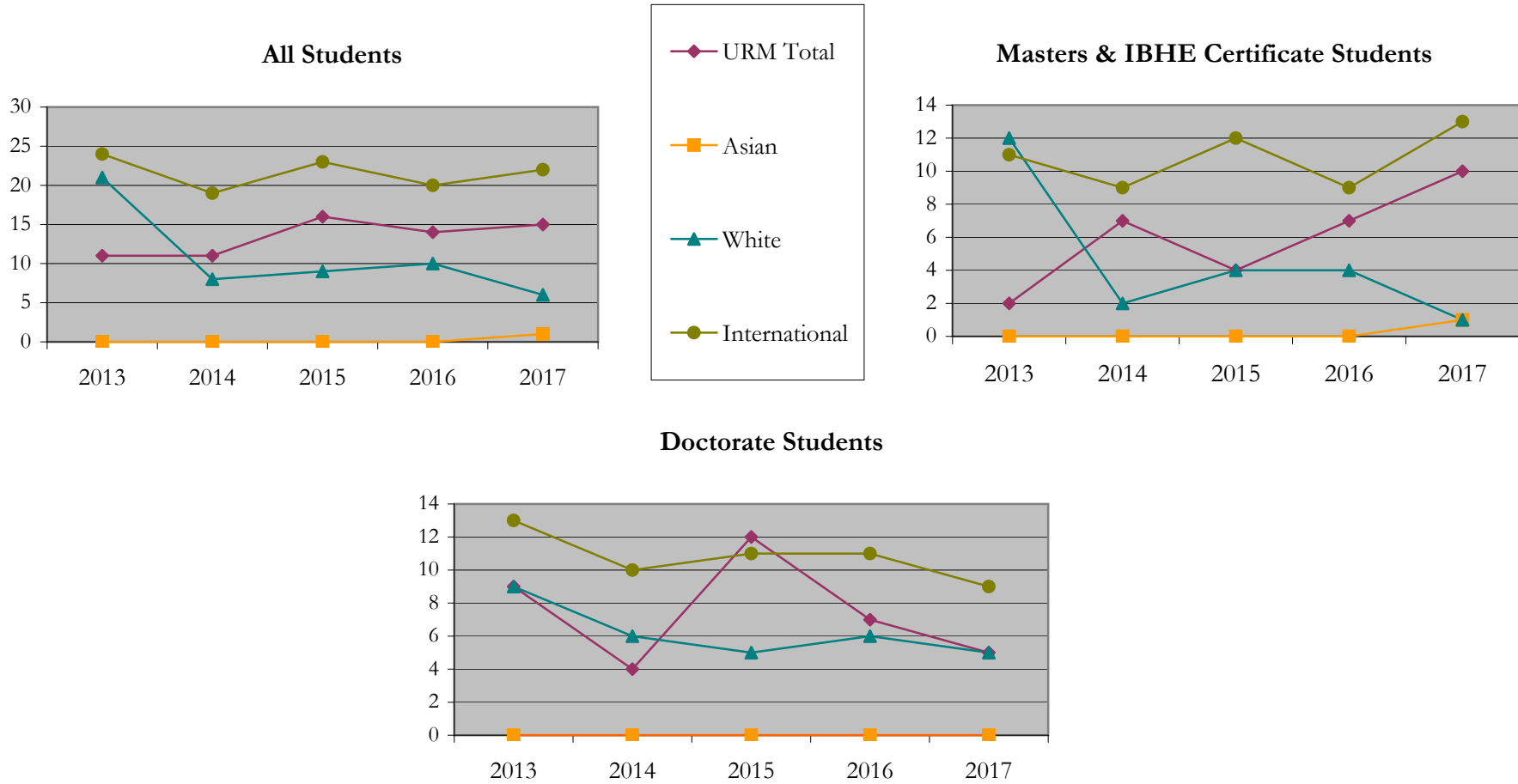
		Total	Under Represented Minorities (URM)																Not Reported		
			American Indian or Alaska Native		Black or African American		Hispanic / Latino		URM Total		Asian		Native Hawaiian or Pacific Islander		White		Two or More Races			International	
			Count	%	Count	%	Count	%	Count	%	Count	%	Count	%	Count	%	Count	%		Count	%
All	2013	59	0	0.0	0	0.0	11	18.6	11	18.6	0	0.0	0	0.0	21	35.6	2	3.4	24	40.7	1
	2014	40	0	0.0	0	0.0	11	27.5	11	27.5	0	0.0	0	0.0	8	20.0	1	2.5	19	47.5	1
	2015	50	0	0.0	0	0.0	16	32.0	16	32.0	0	0.0	0	0.0	9	18.0	0	0.0	23	46.0	2
	2016	44	0	0.0	1	2.3	13	29.5	14	31.8	0	0.0	0	0.0	10	22.7	0	0.0	20	45.5	0
	2017	44	0	0.0	1	2.3	14	31.8	15	34.1	1	2.3	0	0.0	6	13.6	0	0.0	22	50.0	0
Masters & IBHE Certificate	2013	27	0	0.0	0	0.0	2	7.4	2	7.4	0	0.0	0	0.0	12	44.4	2	7.4	11	40.7	0
	2014	18	0	0.0	0	0.0	7	38.9	7	38.9	0	0.0	0	0.0	2	11.1	0	0.0	9	50.0	0
	2015	21	0	0.0	0	0.0	4	19.0	4	19.0	0	0.0	0	0.0	4	19.0	0	0.0	12	57.1	1
	2016	20	0	0.0	0	0.0	7	35.0	7	35.0	0	0.0	0	0.0	4	20.0	0	0.0	9	45.0	0
	2017	25	0	0.0	1	4.0	9	36.0	10	40.0	1	4.0	0	0.0	1	4.0	0	0.0	13	52.0	0
Doctorate	2013	32	0	0.0	0	0.0	9	28.1	9	28.1	0	0.0	0	0.0	9	28.1	0	0.0	13	40.6	1
	2014	22	0	0.0	0	0.0	4	18.2	4	18.2	0	0.0	0	0.0	6	27.3	1	4.5	10	45.5	1
	2015	29	0	0.0	0	0.0	12	41.4	12	41.4	0	0.0	0	0.0	5	17.2	0	0.0	11	37.9	1
	2016	24	0	0.0	1	4.2	6	25.0	7	29.2	0	0.0	0	0.0	6	25.0	0	0.0	11	45.8	0
	2017	19	0	0.0	0	0.0	5	26.3	5	26.3	0	0.0	0	0.0	5	26.3	0	0.0	9	47.4	0
Non-Degree & Campus Certificate	2013	0	0	0.0	0	0.0	0	0.0	0	0.0	0	0.0	0	0.0	0	0.0	0	0.0	0	0.0	0
	2014	0	0	0.0	0	0.0	0	0.0	0	0.0	0	0.0	0	0.0	0	0.0	0	0.0	0	0.0	0
	2015	0	0	0.0	0	0.0	0	0.0	0	0.0	0	0.0	0	0.0	0	0.0	0	0.0	0	0.0	0
	2016	0	0	0.0	0	0.0	0	0.0	0	0.0	0	0.0	0	0.0	0	0.0	0	0.0	0	0.0	0
	2017	0	0	0.0	0	0.0	0	0.0	0	0.0	0	0.0	0	0.0	0	0.0	0	0.0	0	0.0	0

Note: URM stands for Under-Represented Minority and includes American Indian or Alaska Native; Black or African-American; Hispanic / Latino race/ethnicity groups

Applications - Total by Race/Ethnicity

Hispanic Studies

Fall 2013 - Fall 2017



Notes: 1) URM stands for Under-Represented Minority and includes American Indian or Alaska Native; Black or African-American; Hispanic / Latino race/ethnicity groups

2) Individual URM groups, Native Hawaiian Pacific Islander, Two or More Races, and Other race/ethnicity categories left off this charts due to relatively low numbers

**Applications - Admitted
by Race/Ethnicity**

Hispanic Studies

Fall 2013 - Fall 2017

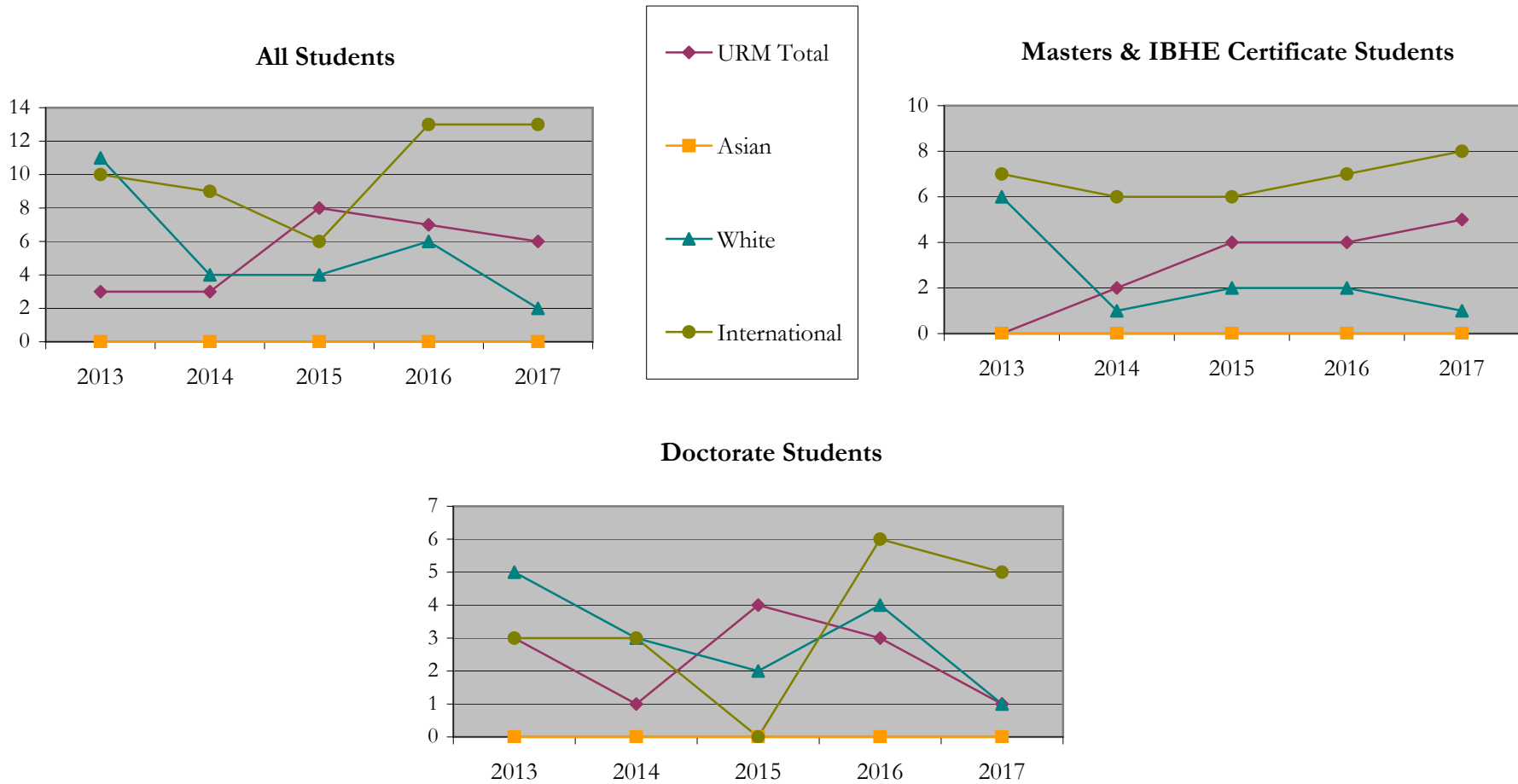
		Total	Under Represented Minorities (URM)								Asian		Native Hawaiian or Pacific Islander		White		Two or More Races		International		Not Reported
			American Indian or Alaska Native		Black or African American		Hispanic / Latino		URM Total												
			Count	%	Count	%	Count	%	Count	%											
All	2013	26	0	0.0	0	0.0	3	11.5	3	11.5	0	0.0	0	0.0	11	42.3	1	3.8	10	38.5	1
	2014	18	0	0.0	0	0.0	3	16.7	3	16.7	0	0.0	0	0.0	4	22.2	1	5.6	9	50.0	1
	2015	18	0	0.0	0	0.0	8	44.4	8	44.4	0	0.0	0	0.0	4	22.2	0	0.0	6	33.3	0
	2016	26	0	0.0	0	0.0	7	26.9	7	26.9	0	0.0	0	0.0	6	23.1	0	0.0	13	50.0	0
	2017	21	0	0.0	0	0.0	6	28.6	6	28.6	0	0.0	0	0.0	2	9.5	0	0.0	13	61.9	0
Masters & IBHE Certificate	2013	14	0	0.0	0	0.0	0	0.0	0	0.0	0	0.0	0	0.0	6	42.9	1	7.1	7	50.0	0
	2014	9	0	0.0	0	0.0	2	22.2	2	22.2	0	0.0	0	0.0	1	11.1	0	0.0	6	66.7	0
	2015	12	0	0.0	0	0.0	4	33.3	4	33.3	0	0.0	0	0.0	2	16.7	0	0.0	6	50.0	0
	2016	13	0	0.0	0	0.0	4	30.8	4	30.8	0	0.0	0	0.0	2	15.4	0	0.0	7	53.8	0
	2017	14	0	0.0	0	0.0	5	35.7	5	35.7	0	0.0	0	0.0	1	7.1	0	0.0	8	57.1	0
Doctorate	2013	12	0	0.0	0	0.0	3	25.0	3	25.0	0	0.0	0	0.0	5	41.7	0	0.0	3	25.0	1
	2014	9	0	0.0	0	0.0	1	11.1	1	11.1	0	0.0	0	0.0	3	33.3	1	11.1	3	33.3	1
	2015	6	0	0.0	0	0.0	4	66.7	4	66.7	0	0.0	0	0.0	2	33.3	0	0.0	0	0.0	0
	2016	13	0	0.0	0	0.0	3	23.1	3	23.1	0	0.0	0	0.0	4	30.8	0	0.0	6	46.2	0
	2017	7	0	0.0	0	0.0	1	14.3	1	14.3	0	0.0	0	0.0	1	14.3	0	0.0	5	71.4	0
Non-Degree & Campus Certificate	2013	0	0	0.0	0	0.0	0	0.0	0	0.0	0	0.0	0	0.0	0	0.0	0	0.0	0	0.0	0
	2014	0	0	0.0	0	0.0	0	0.0	0	0.0	0	0.0	0	0.0	0	0.0	0	0.0	0	0.0	0
	2015	0	0	0.0	0	0.0	0	0.0	0	0.0	0	0.0	0	0.0	0	0.0	0	0.0	0	0.0	0
	2016	0	0	0.0	0	0.0	0	0.0	0	0.0	0	0.0	0	0.0	0	0.0	0	0.0	0	0.0	0
	2017	0	0	0.0	0	0.0	0	0.0	0	0.0	0	0.0	0	0.0	0	0.0	0	0.0	0	0.0	0

Note: URM stands for Under-Represented Minority and includes American Indian or Alaska Native; Black or African-American; Hispanic / Latino race/ethnicity groups

Applications - Admitted by Race/Ethnicity

Hispanic Studies

Fall 2013 - Fall 2017



Notes: 1) URM stands for Under-Represented Minority and includes American Indian or Alaska Native; Black or African-American; Hispanic / Latino race/ethnicity groups

2) Individual URM groups, Native Hawaiian Pacific Islander, Two or More Races, and Other race/ethnicity categories left off this charts due to relatively low numbers

**Enrollment - New
by Race/Ethnicity**

Hispanic Studies

Fall 2013 - Fall 2017

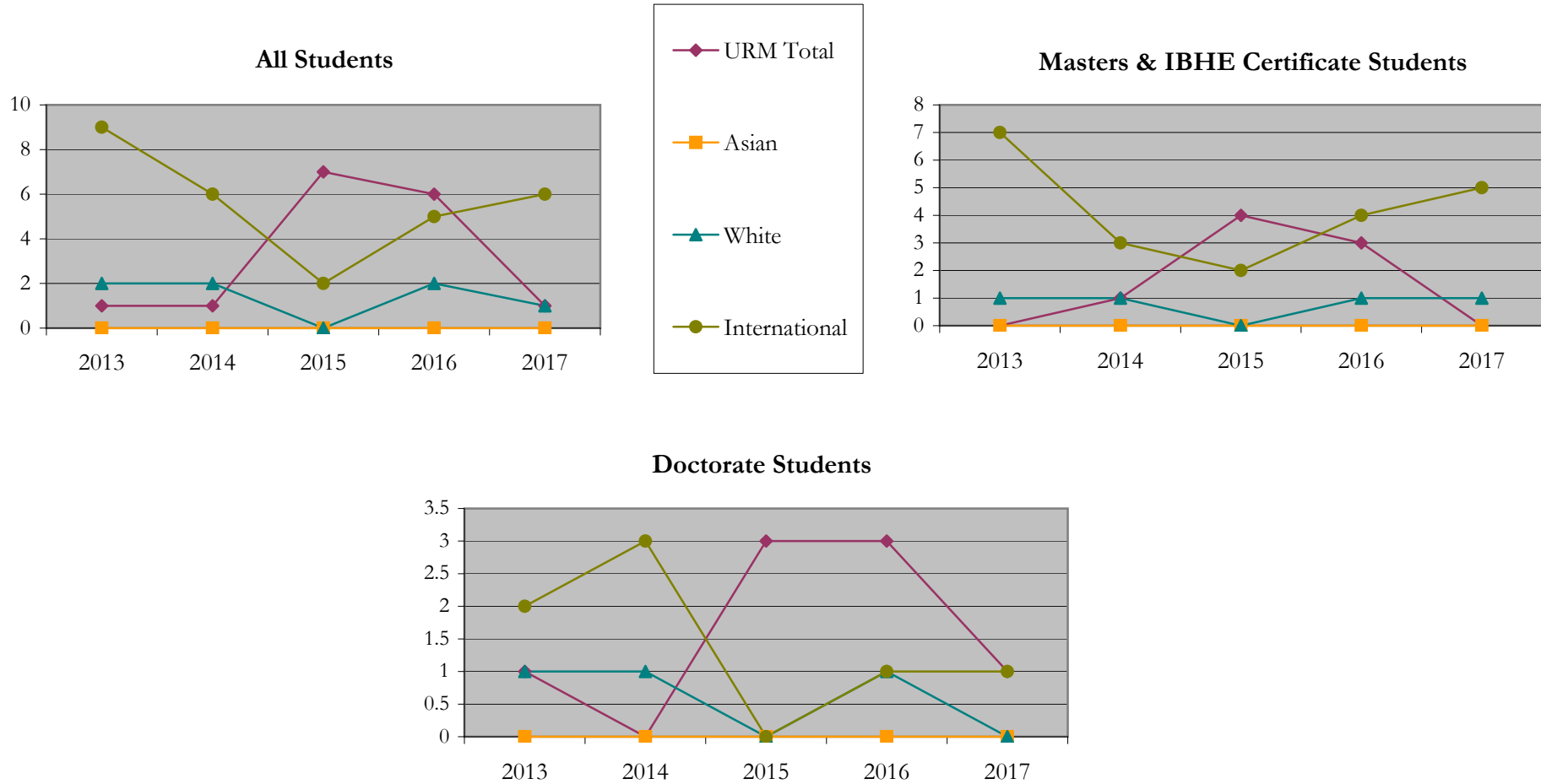
		Total	Under Represented Minorities (URM)								Asian		Native Hawaiian or Pacific Islander		White		Two or More Races		International		Not Reported
			American Indian or Alaska Native		Black or African American		Hispanic / Latino		URM Total												
			Count	%	Count	%	Count	%	Count	%											
All	2013	13	0	0.0	0	0.0	1	7.7	1	7.7	0	0.0	0	0.0	2	15.4	1	7.7	9	69.2	0
	2014	9	0	0.0	0	0.0	1	11.1	1	11.1	0	0.0	0	0.0	2	22.2	0	0.0	6	66.7	0
	2015	9	0	0.0	0	0.0	7	77.8	7	77.8	0	0.0	0	0.0	0	0.0	0	0.0	2	22.2	0
	2016	13	0	0.0	0	0.0	6	46.2	6	46.2	0	0.0	0	0.0	2	15.4	0	0.0	5	38.5	0
	2017	8	0	0.0	0	0.0	1	12.5	1	12.5	0	0.0	0	0.0	1	12.5	0	0.0	6	75.0	0
Masters & IBHE Certificate	2013	9	0	0.0	0	0.0	0	0.0	0	0.0	0	0.0	0	0.0	1	11.1	1	11.1	7	77.8	0
	2014	5	0	0.0	0	0.0	1	20.0	1	20.0	0	0.0	0	0.0	1	20.0	0	0.0	3	60.0	0
	2015	6	0	0.0	0	0.0	4	66.7	4	66.7	0	0.0	0	0.0	0	0.0	0	0.0	2	33.3	0
	2016	8	0	0.0	0	0.0	3	37.5	3	37.5	0	0.0	0	0.0	1	12.5	0	0.0	4	50.0	0
	2017	6	0	0.0	0	0.0	0	0.0	0	0.0	0	0.0	0	0.0	1	16.7	0	0.0	5	83.3	0
Doctorate	2013	4	0	0.0	0	0.0	1	25.0	1	25.0	0	0.0	0	0.0	1	25.0	0	0.0	2	50.0	0
	2014	4	0	0.0	0	0.0	0	0.0	0	0.0	0	0.0	0	0.0	1	25.0	0	0.0	3	75.0	0
	2015	3	0	0.0	0	0.0	3	100.0	3	100.0	0	0.0	0	0.0	0	0.0	0	0.0	0	0.0	0
	2016	5	0	0.0	0	0.0	3	60.0	3	60.0	0	0.0	0	0.0	1	20.0	0	0.0	1	20.0	0
	2017	2	0	0.0	0	0.0	1	50.0	1	50.0	0	0.0	0	0.0	0	0.0	0	0.0	1	50.0	0
Non-Degree & Campus Certificate	2013	0	0	0.0	0	0.0	0	0.0	0	0.0	0	0.0	0	0.0	0	0.0	0	0.0	0	0.0	0
	2014	0	0	0.0	0	0.0	0	0.0	0	0.0	0	0.0	0	0.0	0	0.0	0	0.0	0	0.0	0
	2015	0	0	0.0	0	0.0	0	0.0	0	0.0	0	0.0	0	0.0	0	0.0	0	0.0	0	0.0	0
	2016	0	0	0.0	0	0.0	0	0.0	0	0.0	0	0.0	0	0.0	0	0.0	0	0.0	0	0.0	0
	2017	0	0	0.0	0	0.0	0	0.0	0	0.0	0	0.0	0	0.0	0	0.0	0	0.0	0	0.0	0

Note: URM stands for Under-Represented Minority and includes American Indian or Alaska Native; Black or African-American; Hispanic / Latino race/ethnicity groups

Enrollment - New by Race/Ethnicity

Hispanic Studies

Fall 2013 - Fall 2017



Notes: 1) URM stands for Under-Represented Minority and includes American Indian or Alaska Native; Black or African-American; Hispanic / Latino race/ethnicity groups

2) Individual URM groups, Native Hawaiian Pacific Islander, Two or More Races, and Other race/ethnicity categories left off this charts due to relatively low numbers

**Enrollment - Total
by Race/Ethnicity**

Hispanic Studies

Fall 2013 - Fall 2017

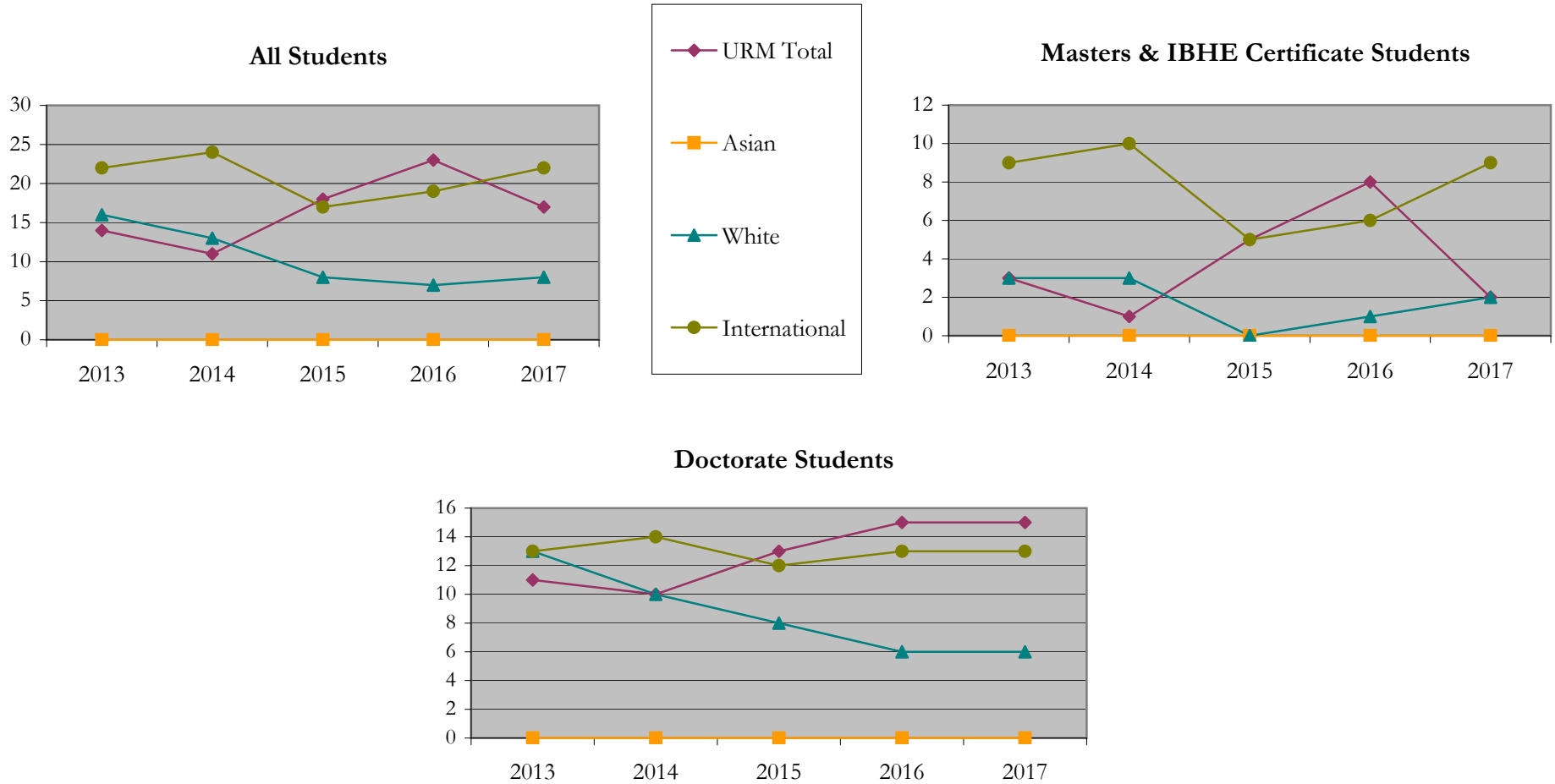
		Total	Under Represented Minorities (URM)								Asian		Native Hawaiian or Pacific Islander		White		Two or More Races		International		Not Reported
			American Indian or Alaska Native		Black or African American		Hispanic / Latino		URM Total												
			Count	%	Count	%	Count	%	Count	%											
All	2013	53	0	0.0	0	0.0	14	26.4	14	26.4	0	0.0	0	0.0	16	30.2	1	1.9	22	41.5	0
	2014	49	0	0.0	0	0.0	11	22.4	11	22.4	0	0.0	0	0.0	13	26.5	1	2.0	24	49.0	0
	2015	43	0	0.0	0	0.0	18	41.9	18	41.9	0	0.0	0	0.0	8	18.6	0	0.0	17	39.5	0
	2016	49	0	0.0	0	0.0	23	46.9	23	46.9	0	0.0	0	0.0	7	14.3	0	0.0	19	38.8	0
	2017	47	0	0.0	0	0.0	17	36.2	17	36.2	0	0.0	0	0.0	8	17.0	0	0.0	22	46.8	0
Masters & IBHE Certificate	2013	16	0	0.0	0	0.0	3	18.8	3	18.8	0	0.0	0	0.0	3	18.8	1	6.3	9	56.3	0
	2014	15	0	0.0	0	0.0	1	6.7	1	6.7	0	0.0	0	0.0	3	20.0	1	6.7	10	66.7	0
	2015	10	0	0.0	0	0.0	5	50.0	5	50.0	0	0.0	0	0.0	0	0.0	0	0.0	5	50.0	0
	2016	15	0	0.0	0	0.0	8	53.3	8	53.3	0	0.0	0	0.0	1	6.7	0	0.0	6	40.0	0
	2017	13	0	0.0	0	0.0	2	15.4	2	15.4	0	0.0	0	0.0	2	15.4	0	0.0	9	69.2	0
Doctorate	2013	37	0	0.0	0	0.0	11	29.7	11	29.7	0	0.0	0	0.0	13	35.1	0	0.0	13	35.1	0
	2014	34	0	0.0	0	0.0	10	29.4	10	29.4	0	0.0	0	0.0	10	29.4	0	0.0	14	41.2	0
	2015	33	0	0.0	0	0.0	13	39.4	13	39.4	0	0.0	0	0.0	8	24.2	0	0.0	12	36.4	0
	2016	34	0	0.0	0	0.0	15	44.1	15	44.1	0	0.0	0	0.0	6	17.6	0	0.0	13	38.2	0
	2017	34	0	0.0	0	0.0	15	44.1	15	44.1	0	0.0	0	0.0	6	17.6	0	0.0	13	38.2	0
Non-Degree & Campus Certificate	2013	0	0	0.0	0	0.0	0	0.0	0	0.0	0	0.0	0	0.0	0	0.0	0	0.0	0	0.0	0
	2014	0	0	0.0	0	0.0	0	0.0	0	0.0	0	0.0	0	0.0	0	0.0	0	0.0	0	0.0	0
	2015	0	0	0.0	0	0.0	0	0.0	0	0.0	0	0.0	0	0.0	0	0.0	0	0.0	0	0.0	0
	2016	0	0	0.0	0	0.0	0	0.0	0	0.0	0	0.0	0	0.0	0	0.0	0	0.0	0	0.0	0
	2017	0	0	0.0	0	0.0	0	0.0	0	0.0	0	0.0	0	0.0	0	0.0	0	0.0	0	0.0	0

Note: URM stands for Under-Represented Minority and includes American Indian or Alaska Native; Black or African-American; Hispanic / Latino race/ethnicity groups

Enrollment - Total by Race/Ethnicity

Hispanic Studies

Fall 2013 - Fall 2017



Notes: 1) URM stands for Under-Represented Minority and includes American Indian or Alaska Native; Black or African-American; Hispanic / Latino race/ethnicity groups

2) Individual URM groups, Native Hawaiian Pacific Islander, Two or More Races, and Other race/ethnicity categories left off this charts due to relatively low numbers

Enrollment

by Student Type, Enrollment Time, and Gender

Hispanic Studies

Fall 2013 - Fall 2017

		Total	New		Continuing		Male		Female		Gender Not Reported	Part-time		Full-time	
			Count	%	Count	%	Count	%	Count	%		Count	%	Count	%
All	2013	53	13	24.5	40	75.5	18	34.0	35	66.0	0	8	15.1	45	84.9
	2014	49	9	18.4	40	81.6	16	32.7	33	67.3	0	7	14.3	42	85.7
	2015	43	9	20.9	34	79.1	14	32.6	29	67.4	0	4	9.3	39	90.7
	2016	49	13	26.5	36	73.5	15	30.6	34	69.4	0	6	12.2	43	87.8
	2017	47	8	17.0	39	83.0	15	31.9	32	68.1	0	7	14.9	40	85.1
Masters & IBHE Certificate	2013	16	9	56.3	7	43.8	3	18.8	13	81.3	0	0	0.0	16	100.0
	2014	15	5	33.3	10	66.7	4	26.7	11	73.3	0	0	0.0	15	100.0
	2015	10	6	60.0	4	40.0	4	40.0	6	60.0	0	0	0.0	10	100.0
	2016	15	8	53.3	7	46.7	4	26.7	11	73.3	0	3	20.0	12	80.0
	2017	13	6	46.2	7	53.8	5	38.5	8	61.5	0	1	7.7	12	92.3
Doctorate	2013	37	4	10.8	33	89.2	15	40.5	22	59.5	0	8	21.6	29	78.4
	2014	34	4	11.8	30	88.2	12	35.3	22	64.7	0	7	20.6	27	79.4
	2015	33	3	9.1	30	90.9	10	30.3	23	69.7	0	4	12.1	29	87.9
	2016	34	5	14.7	29	85.3	11	32.4	23	67.6	0	3	8.8	31	91.2
	2017	34	2	5.9	32	94.1	10	29.4	24	70.6	0	6	17.6	28	82.4
Non-Degree & Campus Certificate	2013	0	0	0.0	0	0.0	0	0.0	0	0.0	0	0	0.0	0	0.0
	2014	0	0	0.0	0	0.0	0	0.0	0	0.0	0	0	0.0	0	0.0
	2015	0	0	0.0	0	0.0	0	0.0	0	0.0	0	0	0.0	0	0.0
	2016	0	0	0.0	0	0.0	0	0.0	0	0.0	0	0	0.0	0	0.0
	2017	0	0	0.0	0	0.0	0	0.0	0	0.0	0	0	0.0	0	0.0

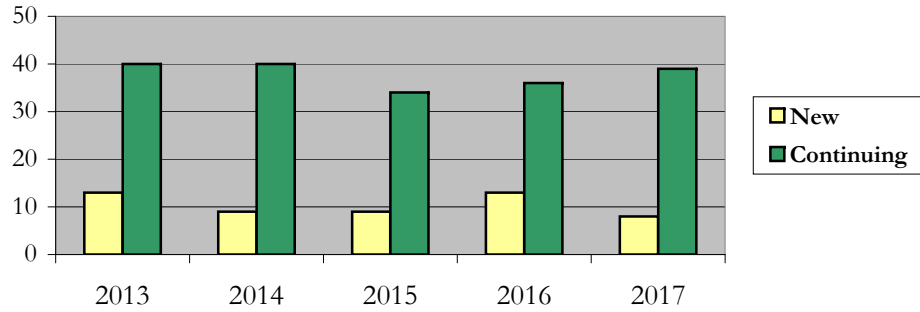
Enrollment

by Student Type, Enrollment Time, and Gender (All Students)

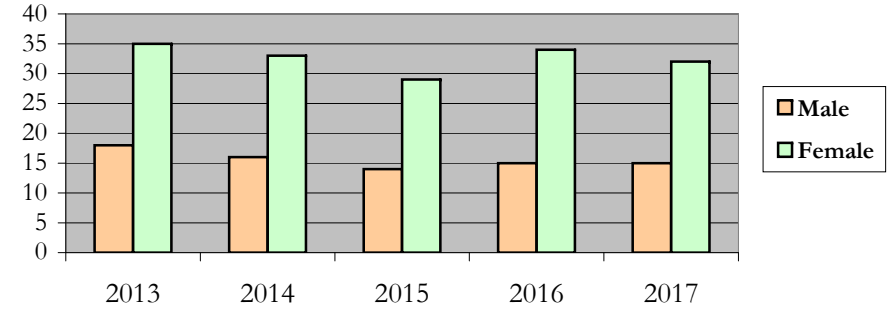
Hispanic Studies

Fall 2013 - Fall 2017

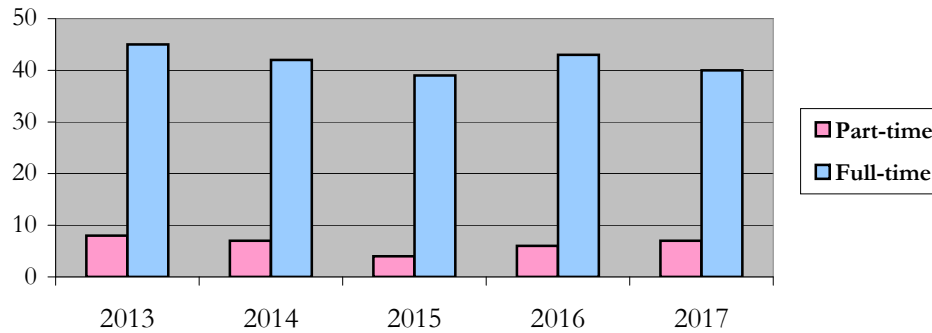
New and Continuing Enrollment



Enrollment by Gender



Enrollment by Student Enrollment Time

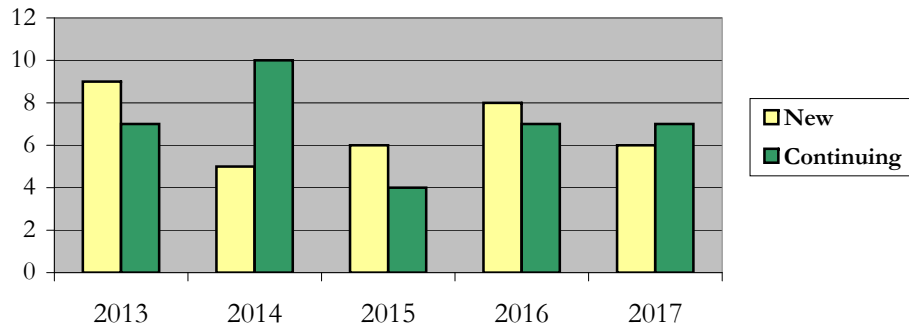


Enrollment
by Student Type, Enrollment Time, and Gender (Master's Students)

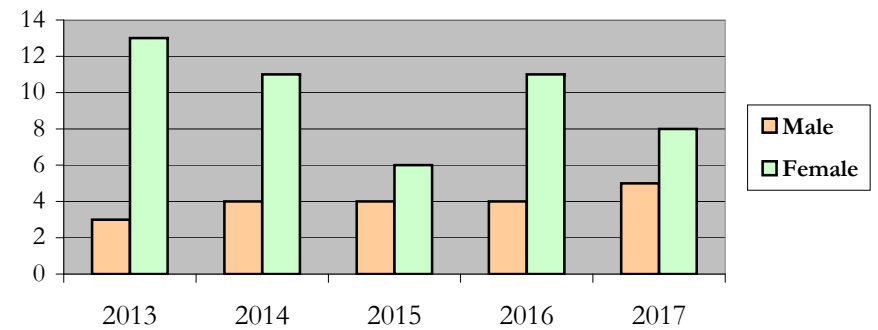
Hispanic Studies

Fall 2013 - Fall 2017

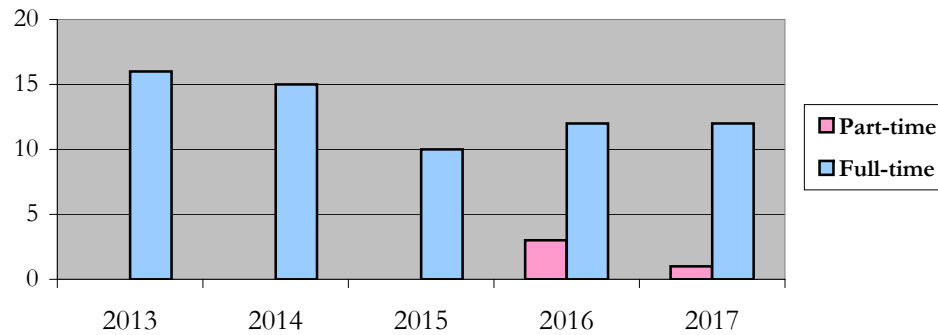
New and Continuing Enrollment



Enrollment by Gender



Enrollment by Student Enrollment Time

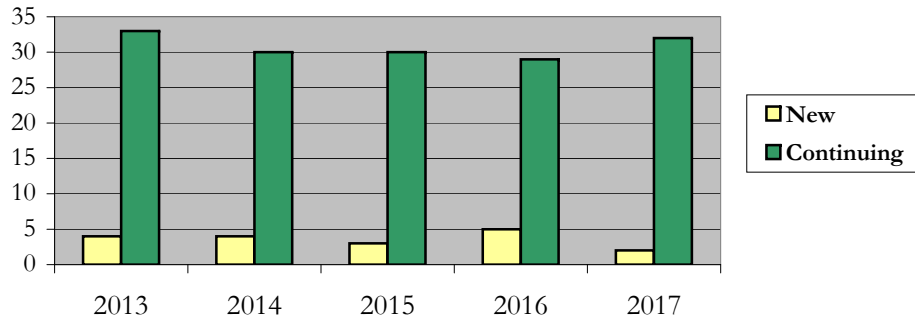


Enrollment
by Student Type, Enrollment Time, and Gender (Doctorate Students)

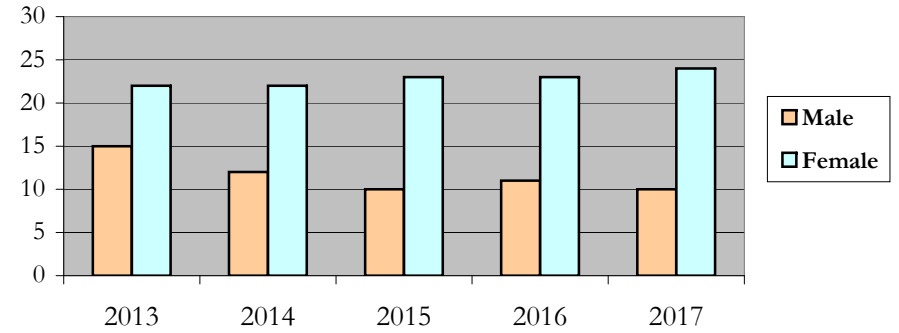
Hispanic Studies

Fall 2013 - Fall 2017

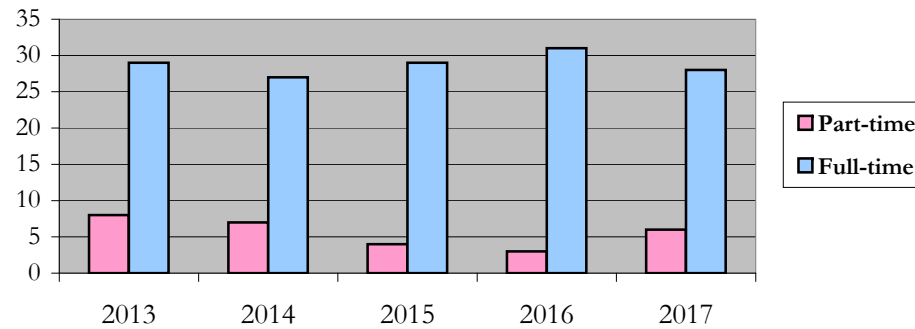
New and Continuing Enrollment



Enrollment by Gender



Enrollment by Student Enrollment Time



Degrees Conferred
by Race/Ethnicity

Hispanic Studies

Fall 2013 - Fall 2017

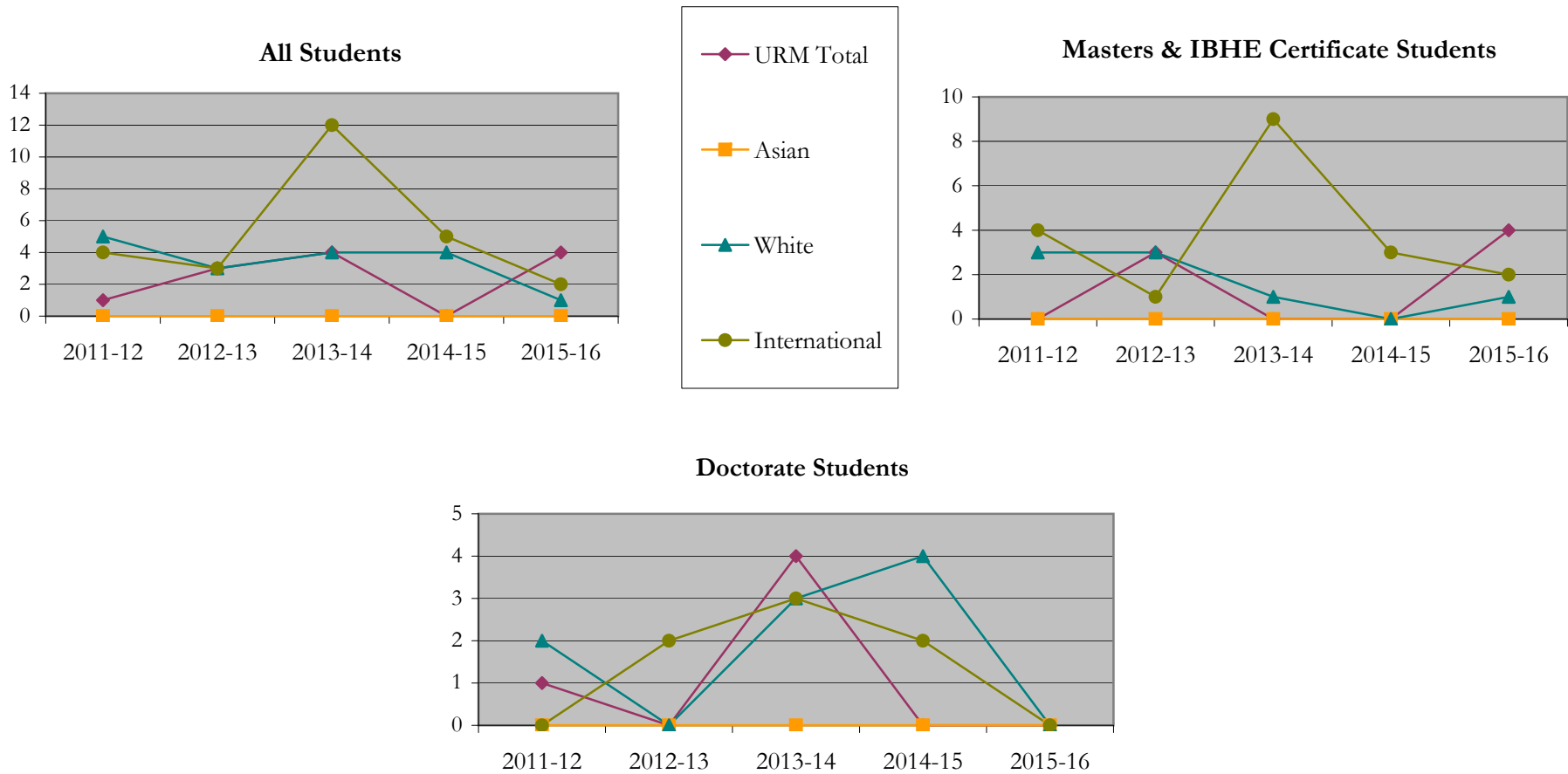
		Total	Under Represented Minorities (URM)								Asian	Native Hawaiian or Pacific Islander		White		Two or More Races		International		Not Reported		
			American Indian or Alaska Native		Black or African American		Hispanic / Latino		URM Total			Count	%	Count	%	Count	%	Count	%		Count	%
			Count	%	Count	%	Count	%	Count	%												
All	2012 - 13	10	0	0.0	0	0.0	1	10.0	1	10.0	0	0.0	0	0.0	5	50.0	0	0.0	4	40.0	0	
	2013 - 14	9	0	0.0	0	0.0	3	33.3	3	33.3	0	0.0	0	0.0	3	33.3	0	0.0	3	33.3	0	
	2014 - 15	21	0	0.0	0	0.0	4	19.0	4	19.0	0	0.0	0	0.0	4	19.0	1	4.8	12	57.1	0	
	2015 - 16	9	0	0.0	0	0.0	0	0.0	0	0.0	0	0.0	0	0.0	4	44.4	0	0.0	5	55.6	0	
	2016 - 17	7	0	0.0	0	0.0	4	57.1	4	57.1	0	0.0	0	0.0	1	14.3	0	0.0	2	28.6	0	
Masters & IBHE Certificate	2012 - 13	7	0	0.0	0	0.0	0	0.0	0	0.0	0	0.0	0	0.0	3	42.9	0	0.0	4	57.1	0	
	2013 - 14	7	0	0.0	0	0.0	3	42.9	3	42.9	0	0.0	0	0.0	3	42.9	0	0.0	1	14.3	0	
	2014 - 15	11	0	0.0	0	0.0	0	0.0	0	0.0	0	0.0	0	0.0	1	9.1	1	9.1	9	81.8	0	
	2015 - 16	3	0	0.0	0	0.0	0	0.0	0	0.0	0	0.0	0	0.0	0	0.0	0	0.0	3	100.0	0	
	2016 - 17	7	0	0.0	0	0.0	4	57.1	4	57.1	0	0.0	0	0.0	1	14.3	0	0.0	2	28.6	0	
Doctorate	2012 - 13	3	0	0.0	0	0.0	1	33.3	1	33.3	0	0.0	0	0.0	2	66.7	0	0.0	0	0.0	0	
	2013 - 14	2	0	0.0	0	0.0	0	0.0	0	0.0	0	0.0	0	0.0	0	0.0	0	0.0	2	100.0	0	
	2014 - 15	10	0	0.0	0	0.0	4	40.0	4	40.0	0	0.0	0	0.0	3	30.0	0	0.0	3	30.0	0	
	2015 - 16	6	0	0.0	0	0.0	0	0.0	0	0.0	0	0.0	0	0.0	4	66.7	0	0.0	2	33.3	0	
	2016 - 17	0	0	0.0	0	0.0	0	0.0	0	0.0	0	0.0	0	0.0	0	0.0	0	0.0	0	0.0	0	
Non-Degree & Campus Certificate	2012 - 13	0	0	0.0	0	0.0	0	0.0	0	0.0	0	0.0	0	0.0	0	0.0	0	0.0	0	0.0	0	
	2013 - 14	0	0	0.0	0	0.0	0	0.0	0	0.0	0	0.0	0	0.0	0	0.0	0	0.0	0	0.0	0	
	2014 - 15	0	0	0.0	0	0.0	0	0.0	0	0.0	0	0.0	0	0.0	0	0.0	0	0.0	0	0.0	0	
	2015 - 16	0	0	0.0	0	0.0	0	0.0	0	0.0	0	0.0	0	0.0	0	0.0	0	0.0	0	0.0	0	
	2016 - 17	0	0	0.0	0	0.0	0	0.0	0	0.0	0	0.0	0	0.0	0	0.0	0	0.0	0	0.0	0	

Note: Each row represents a fiscal year, beginning with Summer term and ending with Spring.

Degrees Conferred by Race/Ethnicity

Hispanic Studies

Fall 2013 - Fall 2017



Notes: 1) URM stands for Under-Represented Minority and includes American Indian or Alaska Native; Black or African-American; Hispanic / Latino race/ethnicity groups

2) Individual URM groups, Native Hawaiian Pacific Islander, Two or More Races, and Other race/ethnicity categories left off this charts due to relatively low numbers

Degrees Conferred

by Gender

Hispanic Studies

Fall 2013 - Fall 2017

		Total	Male		Female		Not Reported
			Count	%	Count	%	
All	2012 - 13	10	1	10.0	9	90.0	0
	2013 - 14	9	2	22.2	7	77.8	0
	2014 - 15	21	6	28.6	15	71.4	0
	2015 - 16	9	4	44.4	5	55.6	0
	2016 - 17	7	3	42.9	4	57.1	0
Masters & IBHE Certificate	2012 - 13	7	0	0.0	7	100.0	0
	2013 - 14	7	2	28.6	5	71.4	0
	2014 - 15	11	2	18.2	9	81.8	0
	2015 - 16	3	1	33.3	2	66.7	0
	2016 - 17	7	3	42.9	4	57.1	0
Doctorate	2012 - 13	3	1	33.3	2	66.7	0
	2013 - 14	2	0	0.0	2	100.0	0
	2014 - 15	10	4	40.0	6	60.0	0
	2015 - 16	6	3	50.0	3	50.0	0
	2016 - 17	0	0	0.0	0	0.0	0
Campus Certificates	2012 - 13	0	0	0.0	0	0.0	0
	2013 - 14	0	0	0.0	0	0.0	0
	2014 - 15	0	0	0.0	0	0.0	0
	2015 - 16	0	0	0.0	0	0.0	0
	2016 - 17	0	0	0.0	0	0.0	0

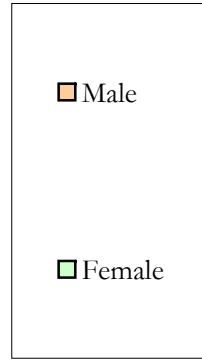
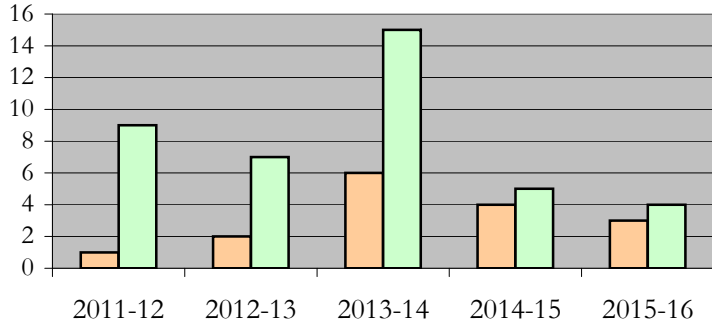
Note: Each row represents a fiscal year, beginning with Summer term and ending with Spring.

Degrees Conferred by Gender

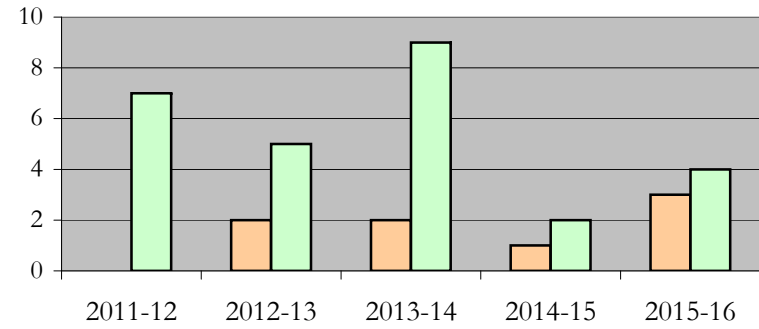
Hispanic Studies

Fall 2013 - Fall 2017

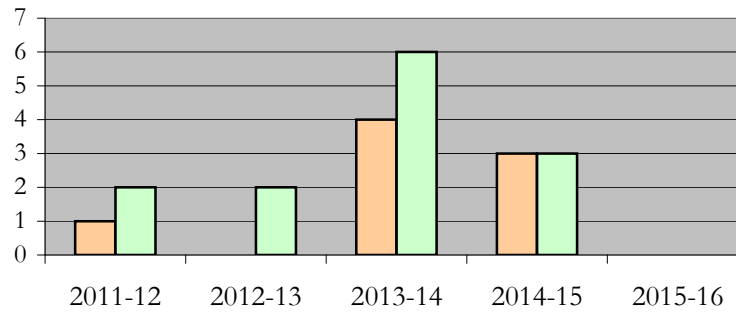
All Students



Masters & IBHE Certificate Students



Doctorate Students



Appendix A

Hispanic Studies

Fall 2013 - Fall 2017

List of program codes included in this document

20FS1900PHD

20FS1312MA

Notes: 1) Program codes are sorted by alphabetical order in column-wise fashion

2) Program codes highlighted in yellow did not have applications, enrollment, nor degrees conferred in the covered period