

Matriculation Diversity Pipeline

English

Fall 2013 - Fall 2017

	Fall Semester Year	Applied					Admitted					Non-URM Admitted to Applied Yield %	URM Admitted to Applied Yield %	New Enrollment					Non-URM Enrolled to Admitted Yield %	URM Enrolled to Admitted Yield %	Total Enrollment				
		Grand Total	Non-URM Total		URM Total		Grand Total	Non-URM Total		URM Total				Grand Total	Non-URM Total		URM Total				Grand Total	Non-URM Total		URM Total	
			Count	%	Count	%		Count	%	Count	%				Count	%	Count	%				Count	%	Count	%
All	2013	350	316	90.3%	34	9.7%	75	68	90.7%	7	9.3%	21.5%	20.6%	22	19	86.4%	3	13.6%	27.9%	42.9%	108	99	91.7%	9	8.3%
	2014	266	240	90.2%	26	9.8%	69	60	87.0%	9	13.0%	25.0%	34.6%	21	20	95.2%	1	4.8%	33.3%	11.1%	108	100	92.6%	8	7.4%
	2015	240	212	88.3%	28	11.7%	47	36	76.6%	11	23.4%	17.0%	39.3%	25	19	76.0%	6	24.0%	52.8%	54.5%	102	92	90.2%	10	9.8%
	2016	216	193	89.4%	23	10.6%	50	44	88.0%	6	12.0%	22.8%	26.1%	19	15	78.9%	4	21.1%	34.1%	66.7%	91	78	85.7%	13	14.3%
	2017	210	178	84.8%	32	15.2%	50	38	76.0%	12	24.0%	21.3%	37.5%	19	15	78.9%	4	21.1%	39.5%	33.3%	86	73	84.9%	13	15.1%
	Average	256	228	88.8%	29	11.2%	58	49	84.5%	9	15.5%	21.6%	31.5%	21	18	83.0%	4	17.0%	35.8%	40.0%	99	88	89.3%	11	10.7%
Masters & IBHE Certificate	2013	102	92	90.2%	10	9.8%	54	48	88.9%	6	11.1%	52.2%	60.0%	16	13	81.3%	3	18.8%	27.1%	50.0%	32	28	87.5%	4	12.5%
	2014	87	77	88.5%	10	11.5%	53	45	84.9%	8	15.1%	58.4%	80.0%	13	12	92.3%	1	7.7%	26.7%	12.5%	37	32	86.5%	5	13.5%
	2015	48	38	79.2%	10	20.8%	31	25	80.6%	6	19.4%	65.8%	60.0%	15	12	80.0%	3	20.0%	48.0%	50.0%	37	32	86.5%	5	13.5%
	2016	46	36	78.3%	10	21.7%	28	23	82.1%	5	17.9%	63.9%	50.0%	11	8	72.7%	3	27.3%	34.8%	60.0%	32	25	78.1%	7	21.9%
	2017	48	33	68.8%	15	31.3%	35	23	65.7%	12	34.3%	69.7%	80.0%	11	7	63.6%	4	36.4%	30.4%	33.3%	28	20	71.4%	8	28.6%
	Average	66	55	83.4%	11	16.6%	40	33	81.6%	7	18.4%	59.4%	67.3%	13	10	78.8%	3	21.2%	31.7%	37.8%	33	27	82.5%	6	17.5%
Doctorate	2013	248	224	90.3%	24	9.7%	21	20	95.2%	1	4.8%	8.9%	4.2%	6	6	100.0%	0	0.0%	30.0%	0.0%	76	71	93.4%	5	6.6%
	2014	179	163	91.1%	16	8.9%	16	15	93.8%	1	6.3%	9.2%	6.3%	8	8	100.0%	0	0.0%	53.3%	0.0%	71	68	95.8%	3	4.2%
	2015	192	174	90.6%	18	9.4%	16	11	68.8%	5	31.3%	6.3%	27.8%	10	7	70.0%	3	30.0%	63.6%	60.0%	65	60	92.3%	5	7.7%
	2016	170	157	92.4%	13	7.6%	22	21	95.5%	1	4.5%	13.4%	7.7%	8	7	87.5%	1	12.5%	33.3%	100.0%	59	53	89.8%	6	10.2%
	2017	162	145	89.5%	17	10.5%	15	15	100.0%	0	0.0%	10.3%	0.0%	8	8	100.0%	0	0.0%	53.3%	0.0%	58	53	91.4%	5	8.6%
	Average	190	173	90.7%	18	9.3%	18	16	91.1%	2	8.9%	9.5%	9.1%	8	7	90.0%	1	10.0%	43.9%	50.0%	66	61	92.7%	5	7.3%
Non-Degree & Campus Certificate	2013	0	0	0.0%	0	0.0%	0	0	0.0%	0	0.0%	0.0%	0.0%	0	0	0.0%	0	0.0%	0.0%	0.0%	0	0	0.0%	0	0.0%
	2014	0	0	0.0%	0	0.0%	0	0	0.0%	0	0.0%	0.0%	0.0%	0	0	0.0%	0	0.0%	0.0%	0.0%	0	0	0.0%	0	0.0%
	2015	0	0	0.0%	0	0.0%	0	0	0.0%	0	0.0%	0.0%	0.0%	0	0	0.0%	0	0.0%	0.0%	0.0%	0	0	0.0%	0	0.0%
	2016	0	0	0.0%	0	0.0%	0	0	0.0%	0	0.0%	0.0%	0.0%	0	0	0.0%	0	0.0%	0.0%	0.0%	0	0	0.0%	0	0.0%
	2017	0	0	0.0%	0	0.0%	0	0	0.0%	0	0.0%	0.0%	0.0%	0	0	0.0%	0	0.0%	0.0%	0.0%	0	0	0.0%	0	0.0%
	Average	0	0	0.0%	0	0.0%	0	0	0.0%	0	0.0%	0.0%	0.0%	0	0	0.0%	0	0.0%	0.0%	0.0%	0	0	0.0%	0	0.0%

Note: URM stands for Under-Represented Minority and includes American Indian or Alaska Native; Black or African-American; Hispanic / Latino race/ethnicity groups

Applications - Total by Race/Ethnicity

English

Fall 2013 - Fall 2017

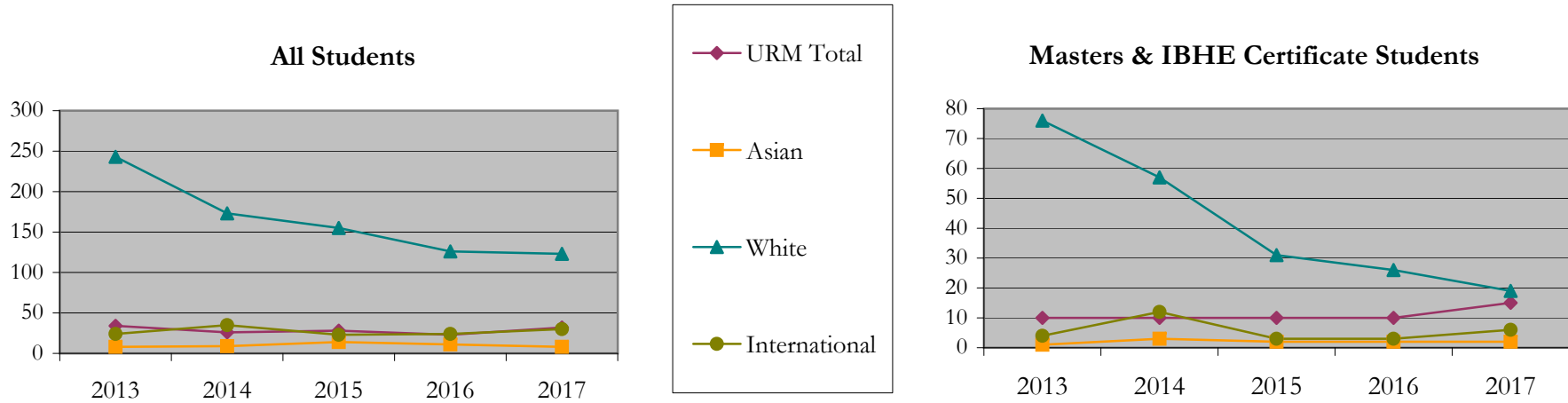
		Total	Under Represented Minorities (URM)																Not Reported		
			American Indian or Alaska Native		Black or African American		Hispanic / Latino		URM Total		Asian		Native Hawaiian or Pacific Islander		White		Two or More Races			International	
			Count	%	Count	%	Count	%	Count	%	Count	%	Count	%	Count	%	Count	%		Count	%
All	2013	350	0	0.0	12	3.4	22	6.3	34	9.7	8	2.3	0	0.0	243	69.4	14	4.0	24	6.9	27
	2014	266	0	0.0	6	2.3	20	7.5	26	9.8	9	3.4	1	0.4	173	65.0	9	3.4	35	13.2	13
	2015	240	1	0.4	5	2.1	22	9.2	28	11.7	14	5.8	0	0.0	155	64.6	8	3.3	23	9.6	12
	2016	216	0	0.0	9	4.2	14	6.5	23	10.6	11	5.1	0	0.0	126	58.3	6	2.8	24	11.1	26
	2017	210	0	0.0	11	5.2	21	10.0	32	15.2	8	3.8	0	0.0	123	58.6	7	3.3	30	14.3	10
Masters & IBHE Certificate	2013	102	0	0.0	5	4.9	5	4.9	10	9.8	1	1.0	0	0.0	76	74.5	4	3.9	4	3.9	7
	2014	87	0	0.0	3	3.4	7	8.0	10	11.5	3	3.4	0	0.0	57	65.5	3	3.4	12	13.8	2
	2015	48	0	0.0	4	8.3	6	12.5	10	20.8	2	4.2	0	0.0	31	64.6	0	0.0	3	6.3	2
	2016	46	0	0.0	6	13.0	4	8.7	10	21.7	2	4.3	0	0.0	26	56.5	2	4.3	3	6.5	3
	2017	48	0	0.0	5	10.4	10	20.8	15	31.3	2	4.2	0	0.0	19	39.6	3	6.3	6	12.5	3
Doctorate	2013	248	0	0.0	7	2.8	17	6.9	24	9.7	7	2.8	0	0.0	167	67.3	10	4.0	20	8.1	20
	2014	179	0	0.0	3	1.7	13	7.3	16	8.9	6	3.4	1	0.6	116	64.8	6	3.4	23	12.8	11
	2015	192	1	0.5	1	0.5	16	8.3	18	9.4	12	6.3	0	0.0	124	64.6	8	4.2	20	10.4	10
	2016	170	0	0.0	3	1.8	10	5.9	13	7.6	9	5.3	0	0.0	100	58.8	4	2.4	21	12.4	23
	2017	162	0	0.0	6	3.7	11	6.8	17	10.5	6	3.7	0	0.0	104	64.2	4	2.5	24	14.8	7
Non-Degree & Campus Certificate	2013	0	0	0.0	0	0.0	0	0.0	0	0.0	0	0.0	0	0.0	0	0.0	0	0.0	0	0.0	0
	2014	0	0	0.0	0	0.0	0	0.0	0	0.0	0	0.0	0	0.0	0	0.0	0	0.0	0	0.0	0
	2015	0	0	0.0	0	0.0	0	0.0	0	0.0	0	0.0	0	0.0	0	0.0	0	0.0	0	0.0	0
	2016	0	0	0.0	0	0.0	0	0.0	0	0.0	0	0.0	0	0.0	0	0.0	0	0.0	0	0.0	0
	2017	0	0	0.0	0	0.0	0	0.0	0	0.0	0	0.0	0	0.0	0	0.0	0	0.0	0	0.0	0

Note: URM stands for Under-Represented Minority and includes American Indian or Alaska Native; Black or African-American; Hispanic / Latino race/ethnicity groups

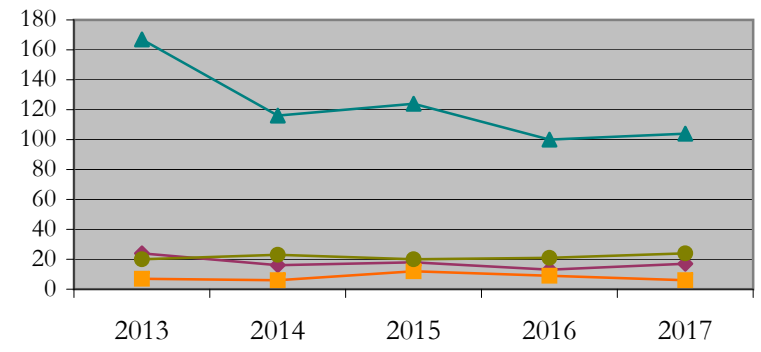
Applications - Total by Race/Ethnicity

English

Fall 2013 - Fall 2017



Doctorate Students



Notes: 1) URM stands for Under-Represented Minority and includes American Indian or Alaska Native; Black or African-American; Hispanic / Latino race/ethnicity groups
 2) Individual URM groups, Native Hawaiian Pacific Islander, Two or More Races, and Other race/ethnicity categories left off this charts due to relatively low numbers

**Applications - Admitted
by Race/Ethnicity**

English

Fall 2013 - Fall 2017

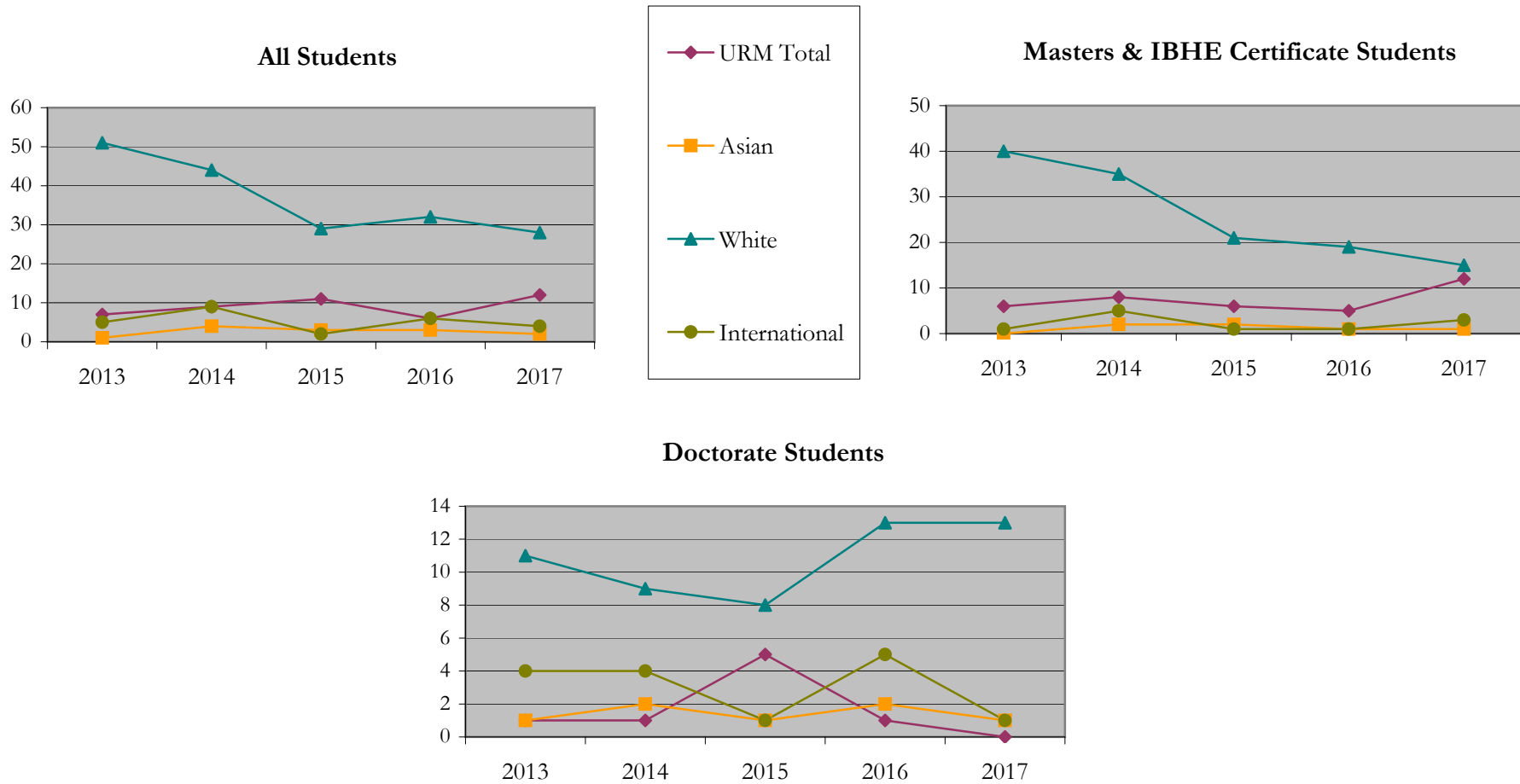
		Total	Under Represented Minorities (URM)								Asian		Native Hawaiian or Pacific Islander		White		Two or More Races		International		Not Reported
			American Indian or Alaska Native		Black or African American		Hispanic / Latino		URM Total												
			Count	%	Count	%	Count	%	Count	%											
All	2013	75	0	0.0	3	4.0	4	5.3	7	9.3	1	1.3	0	0.0	51	68.0	6	8.0	5	6.7	5
	2014	69	0	0.0	2	2.9	7	10.1	9	13.0	4	5.8	0	0.0	44	63.8	3	4.3	9	13.0	0
	2015	47	0	0.0	2	4.3	9	19.1	11	23.4	3	6.4	0	0.0	29	61.7	1	2.1	2	4.3	1
	2016	50	0	0.0	3	6.0	3	6.0	6	12.0	3	6.0	0	0.0	32	64.0	1	2.0	6	12.0	2
	2017	50	0	0.0	4	8.0	8	16.0	12	24.0	2	4.0	0	0.0	28	56.0	2	4.0	4	8.0	2
Masters & IBHE Certificate	2013	54	0	0.0	3	5.6	3	5.6	6	11.1	0	0.0	0	0.0	40	74.1	3	5.6	1	1.9	4
	2014	53	0	0.0	2	3.8	6	11.3	8	15.1	2	3.8	0	0.0	35	66.0	3	5.7	5	9.4	0
	2015	31	0	0.0	2	6.5	4	12.9	6	19.4	2	6.5	0	0.0	21	67.7	0	0.0	1	3.2	1
	2016	28	0	0.0	3	10.7	2	7.1	5	17.9	1	3.6	0	0.0	19	67.9	1	3.6	1	3.6	1
	2017	35	0	0.0	4	11.4	8	22.9	12	34.3	1	2.9	0	0.0	15	42.9	2	5.7	3	8.6	2
Doctorate	2013	21	0	0.0	0	0.0	1	4.8	1	4.8	1	4.8	0	0.0	11	52.4	3	14.3	4	19.0	1
	2014	16	0	0.0	0	0.0	1	6.3	1	6.3	2	12.5	0	0.0	9	56.3	0	0.0	4	25.0	0
	2015	16	0	0.0	0	0.0	5	31.3	5	31.3	1	6.3	0	0.0	8	50.0	1	6.3	1	6.3	0
	2016	22	0	0.0	0	0.0	1	4.5	1	4.5	2	9.1	0	0.0	13	59.1	0	0.0	5	22.7	1
	2017	15	0	0.0	0	0.0	0	0.0	0	0.0	1	6.7	0	0.0	13	86.7	0	0.0	1	6.7	0
Non-Degree & Campus Certificate	2013	0	0	0.0	0	0.0	0	0.0	0	0.0	0	0.0	0	0.0	0	0.0	0	0.0	0	0.0	0
	2014	0	0	0.0	0	0.0	0	0.0	0	0.0	0	0.0	0	0.0	0	0.0	0	0.0	0	0.0	0
	2015	0	0	0.0	0	0.0	0	0.0	0	0.0	0	0.0	0	0.0	0	0.0	0	0.0	0	0.0	0
	2016	0	0	0.0	0	0.0	0	0.0	0	0.0	0	0.0	0	0.0	0	0.0	0	0.0	0	0.0	0
	2017	0	0	0.0	0	0.0	0	0.0	0	0.0	0	0.0	0	0.0	0	0.0	0	0.0	0	0.0	0

Note: URM stands for Under-Represented Minority and includes American Indian or Alaska Native; Black or African-American; Hispanic / Latino race/ethnicity groups

Applications - Admitted by Race/Ethnicity

English

Fall 2013 - Fall 2017



Notes: 1) URM stands for Under-Represented Minority and includes American Indian or Alaska Native; Black or African-American; Hispanic / Latino race/ethnicity groups

2) Individual URM groups, Native Hawaiian Pacific Islander, Two or More Races, and Other race/ethnicity categories left off this charts due to relatively low numbers

**Enrollment - New
by Race/Ethnicity**

English

Fall 2013 - Fall 2017

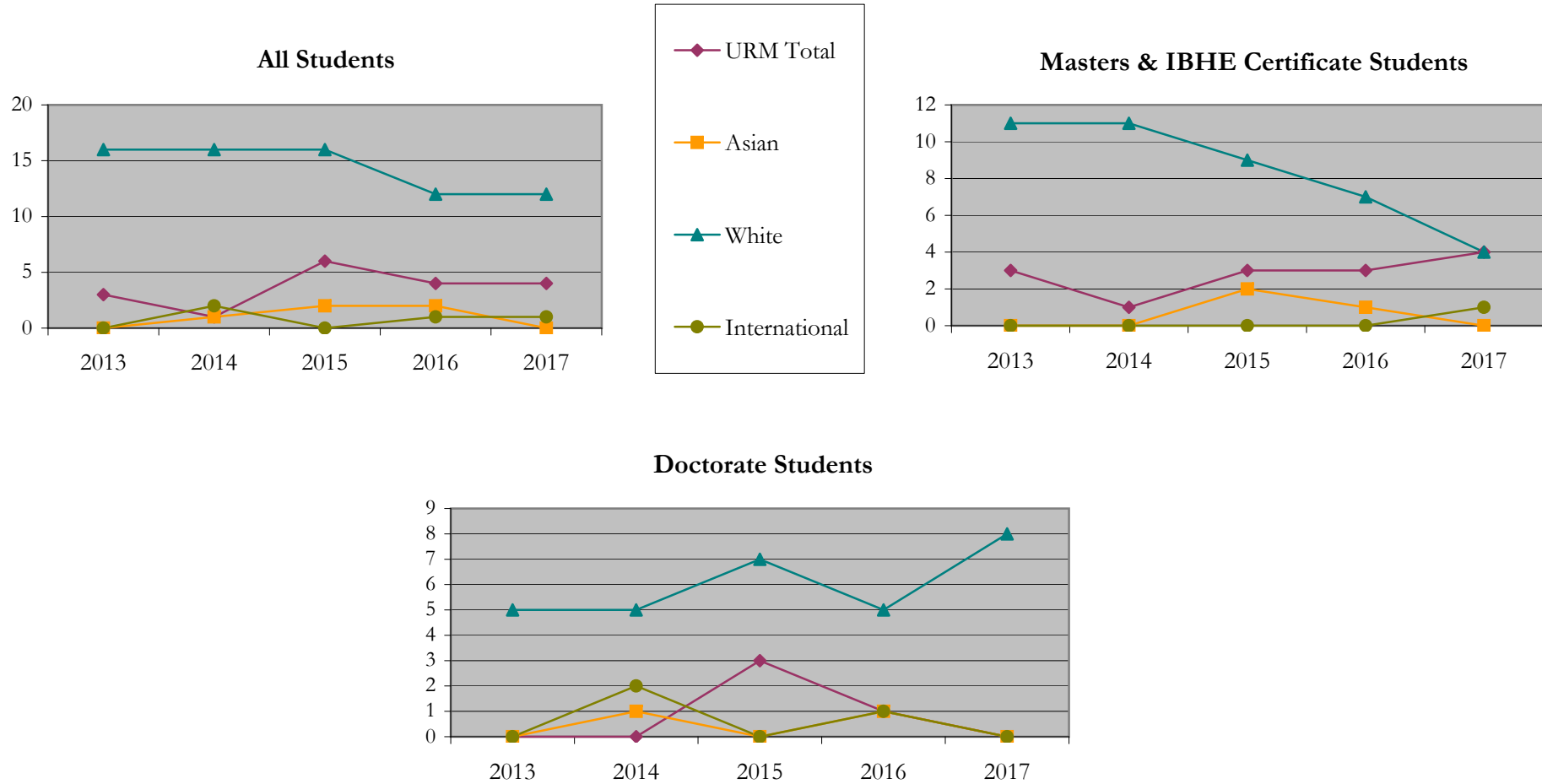
		Total	Under Represented Minorities (URM)								Asian		Native Hawaiian or Pacific Islander		White		Two or More Races		International		Not Reported
			American Indian or Alaska Native		Black or African American		Hispanic / Latino		URM Total												
			Count	%	Count	%	Count	%	Count	%											
All	2013	22	0	0.0	2	9.1	1	4.5	3	13.6	0	0.0	0	0.0	16	72.7	2	9.1	0	0.0	1
	2014	21	0	0.0	0	0.0	1	4.8	1	4.8	1	4.8	0	0.0	16	76.2	1	4.8	2	9.5	0
	2015	25	0	0.0	0	0.0	6	24.0	6	24.0	2	8.0	0	0.0	16	64.0	0	0.0	0	0.0	1
	2016	19	0	0.0	2	10.5	2	10.5	4	21.1	2	10.5	0	0.0	12	63.2	0	0.0	1	5.3	0
	2017	19	0	0.0	0	0.0	4	21.1	4	21.1	0	0.0	0	0.0	12	63.2	2	10.5	1	5.3	0
Masters & IBHE Certificate	2013	16	0	0.0	2	12.5	1	6.3	3	18.8	0	0.0	0	0.0	11	68.8	1	6.3	0	0.0	1
	2014	13	0	0.0	0	0.0	1	7.7	1	7.7	0	0.0	0	0.0	11	84.6	1	7.7	0	0.0	0
	2015	15	0	0.0	0	0.0	3	20.0	3	20.0	2	13.3	0	0.0	9	60.0	0	0.0	0	0.0	1
	2016	11	0	0.0	2	18.2	1	9.1	3	27.3	1	9.1	0	0.0	7	63.6	0	0.0	0	0.0	0
	2017	11	0	0.0	0	0.0	4	36.4	4	36.4	0	0.0	0	0.0	4	36.4	2	18.2	1	9.1	0
Doctorate	2013	6	0	0.0	0	0.0	0	0.0	0	0.0	0	0.0	0	0.0	5	83.3	1	16.7	0	0.0	0
	2014	8	0	0.0	0	0.0	0	0.0	0	0.0	1	12.5	0	0.0	5	62.5	0	0.0	2	25.0	0
	2015	10	0	0.0	0	0.0	3	30.0	3	30.0	0	0.0	0	0.0	7	70.0	0	0.0	0	0.0	0
	2016	8	0	0.0	0	0.0	1	12.5	1	12.5	1	12.5	0	0.0	5	62.5	0	0.0	1	12.5	0
	2017	8	0	0.0	0	0.0	0	0.0	0	0.0	0	0.0	0	0.0	8	100.0	0	0.0	0	0.0	0
Non-Degree & Campus Certificate	2013	0	0	0.0	0	0.0	0	0.0	0	0.0	0	0.0	0	0.0	0	0.0	0	0.0	0	0.0	0
	2014	0	0	0.0	0	0.0	0	0.0	0	0.0	0	0.0	0	0.0	0	0.0	0	0.0	0	0.0	0
	2015	0	0	0.0	0	0.0	0	0.0	0	0.0	0	0.0	0	0.0	0	0.0	0	0.0	0	0.0	0
	2016	0	0	0.0	0	0.0	0	0.0	0	0.0	0	0.0	0	0.0	0	0.0	0	0.0	0	0.0	0
	2017	0	0	0.0	0	0.0	0	0.0	0	0.0	0	0.0	0	0.0	0	0.0	0	0.0	0	0.0	0

Note: URM stands for Under-Represented Minority and includes American Indian or Alaska Native; Black or African-American; Hispanic / Latino race/ethnicity groups

Enrollment - New by Race/Ethnicity

English

Fall 2013 - Fall 2017



Notes: 1) URM stands for Under-Represented Minority and includes American Indian or Alaska Native; Black or African-American; Hispanic / Latino race/ethnicity groups

2) Individual URM groups, Native Hawaiian Pacific Islander, Two or More Races, and Other race/ethnicity categories left off this charts due to relatively low numbers

**Enrollment - Total
by Race/Ethnicity**

English

Fall 2013 - Fall 2017

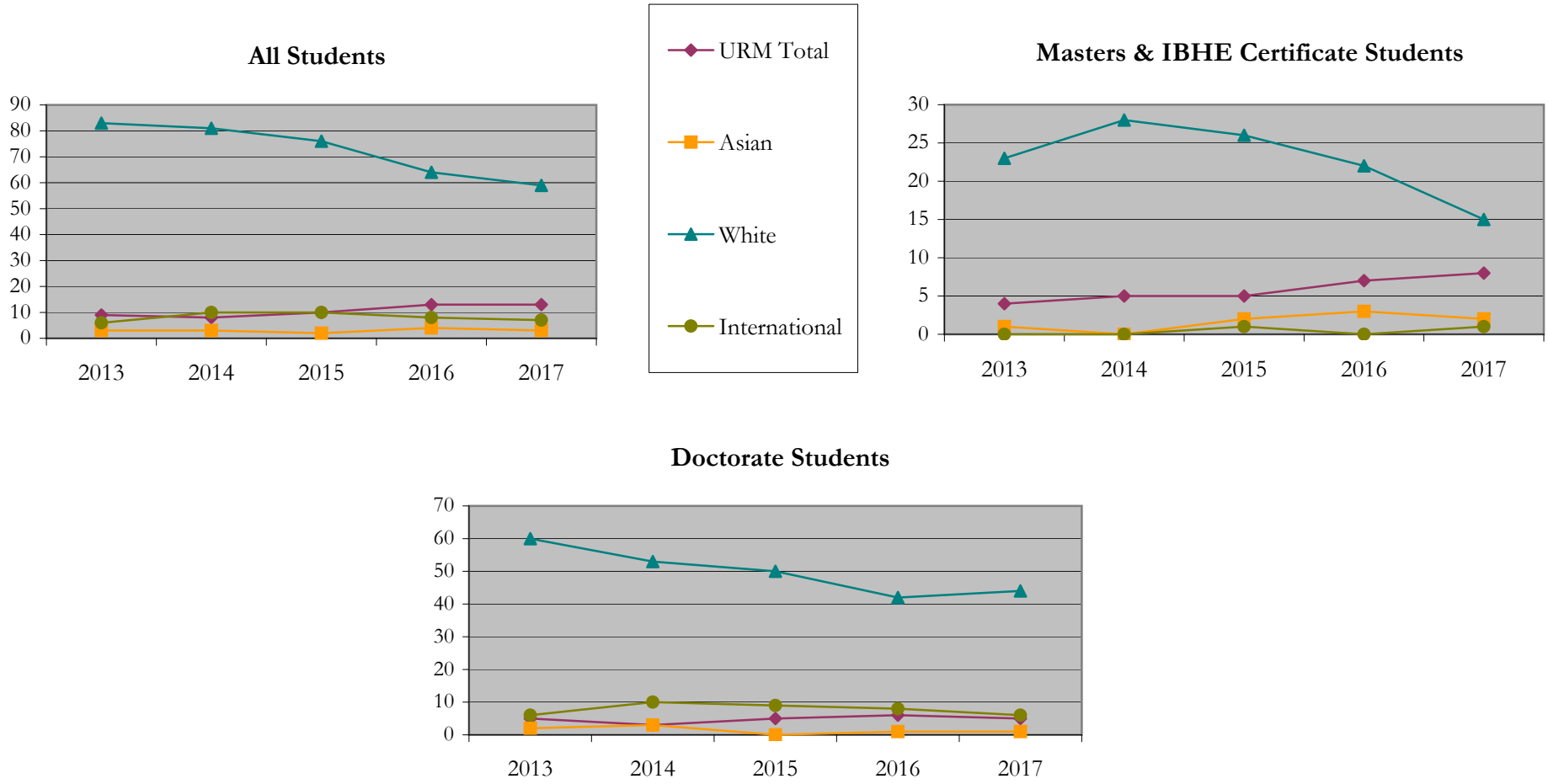
		Total	Under Represented Minorities (URM)								Asian		Native Hawaiian or Pacific Islander		White		Two or More Races		International		Not Reported
			American Indian or Alaska Native		Black or African American		Hispanic / Latino		URM Total												
			Count	%	Count	%	Count	%	Count	%											
All	2013	108	0	0.0	6	5.6	3	2.8	9	8.3	3	2.8	0	0.0	83	76.9	4	3.7	6	5.6	3
	2014	108	0	0.0	4	3.7	4	3.7	8	7.4	3	2.8	0	0.0	81	75.0	4	3.7	10	9.3	2
	2015	102	0	0.0	1	1.0	9	8.8	10	9.8	2	2.0	0	0.0	76	74.5	2	2.0	10	9.8	2
	2016	91	0	0.0	2	2.2	11	12.1	13	14.3	4	4.4	0	0.0	64	70.3	1	1.1	8	8.8	1
	2017	86	0	0.0	2	2.3	11	12.8	13	15.1	3	3.5	0	0.0	59	68.6	3	3.5	7	8.1	1
Masters & IBHE Certificate	2013	32	0	0.0	3	9.4	1	3.1	4	12.5	1	3.1	0	0.0	23	71.9	1	3.1	0	0.0	3
	2014	37	0	0.0	3	8.1	2	5.4	5	13.5	0	0.0	0	0.0	28	75.7	2	5.4	0	0.0	2
	2015	37	0	0.0	1	2.7	4	10.8	5	13.5	2	5.4	0	0.0	26	70.3	1	2.7	1	2.7	2
	2016	32	0	0.0	2	6.3	5	15.6	7	21.9	3	9.4	0	0.0	22	68.8	0	0.0	0	0.0	0
	2017	28	0	0.0	2	7.1	6	21.4	8	28.6	2	7.1	0	0.0	15	53.6	2	7.1	1	3.6	0
Doctorate	2013	76	0	0.0	3	3.9	2	2.6	5	6.6	2	2.6	0	0.0	60	78.9	3	3.9	6	7.9	0
	2014	71	0	0.0	1	1.4	2	2.8	3	4.2	3	4.2	0	0.0	53	74.6	2	2.8	10	14.1	0
	2015	65	0	0.0	0	0.0	5	7.7	5	7.7	0	0.0	0	0.0	50	76.9	1	1.5	9	13.8	0
	2016	59	0	0.0	0	0.0	6	10.2	6	10.2	1	1.7	0	0.0	42	71.2	1	1.7	8	13.6	1
	2017	58	0	0.0	0	0.0	5	8.6	5	8.6	1	1.7	0	0.0	44	75.9	1	1.7	6	10.3	1
Non-Degree & Campus Certificate	2013	0	0	0.0	0	0.0	0	0.0	0	0.0	0	0.0	0	0.0	0	0.0	0	0.0	0	0.0	0
	2014	0	0	0.0	0	0.0	0	0.0	0	0.0	0	0.0	0	0.0	0	0.0	0	0.0	0	0.0	0
	2015	0	0	0.0	0	0.0	0	0.0	0	0.0	0	0.0	0	0.0	0	0.0	0	0.0	0	0.0	0
	2016	0	0	0.0	0	0.0	0	0.0	0	0.0	0	0.0	0	0.0	0	0.0	0	0.0	0	0.0	0
	2017	0	0	0.0	0	0.0	0	0.0	0	0.0	0	0.0	0	0.0	0	0.0	0	0.0	0	0.0	0

Note: URM stands for Under-Represented Minority and includes American Indian or Alaska Native; Black or African-American; Hispanic / Latino race/ethnicity groups

Enrollment - Total by Race/Ethnicity

English

Fall 2013 - Fall 2017



Notes: 1) URM stands for Under-Represented Minority and includes American Indian or Alaska Native; Black or African-American; Hispanic / Latino race/ethnicity groups

2) Individual URM groups, Native Hawaiian Pacific Islander, Two or More Races, and Other race/ethnicity categories left off this charts due to relatively low numbers

Enrollment

by Student Type, Enrollment Time, and Gender

English

Fall 2013 - Fall 2017

		Total	New		Continuing		Male		Female		Gender Not Reported	Part-time		Full-time	
			Count	%	Count	%	Count	%	Count	%		Count	%	Count	%
All	2013	108	22	20.4	86	79.6	50	46.3	57	52.8	1	16	14.8	92	85.2
	2014	108	21	19.4	87	80.6	55	50.9	52	48.1	1	31	28.7	77	71.3
	2015	102	25	24.5	77	75.5	52	51.0	49	48.0	1	26	25.5	76	74.5
	2016	91	19	20.9	72	79.1	47	51.6	44	48.4	0	23	25.3	68	74.7
	2017	86	19	22.1	67	77.9	42	48.8	44	51.2	0	22	25.6	64	74.4
Masters & IBHE Certificate	2013	32	16	50.0	16	50.0	16	50.0	15	46.9	1	9	28.1	23	71.9
	2014	37	13	35.1	24	64.9	20	54.1	16	43.2	1	15	40.5	22	59.5
	2015	37	15	40.5	22	59.5	15	40.5	21	56.8	1	15	40.5	22	59.5
	2016	32	11	34.4	21	65.6	12	37.5	20	62.5	0	13	40.6	19	59.4
	2017	28	11	39.3	17	60.7	10	35.7	18	64.3	0	15	53.6	13	46.4
Doctorate	2013	76	6	7.9	70	92.1	34	44.7	42	55.3	0	7	9.2	69	90.8
	2014	71	8	11.3	63	88.7	35	49.3	36	50.7	0	16	22.5	55	77.5
	2015	65	10	15.4	55	84.6	37	56.9	28	43.1	0	11	16.9	54	83.1
	2016	59	8	13.6	51	86.4	35	59.3	24	40.7	0	10	16.9	49	83.1
	2017	58	8	13.8	50	86.2	32	55.2	26	44.8	0	7	12.1	51	87.9
Non-Degree & Campus Certificate	2013	0	0	0.0	0	0.0	0	0.0	0	0.0	0	0	0.0	0	0.0
	2014	0	0	0.0	0	0.0	0	0.0	0	0.0	0	0	0.0	0	0.0
	2015	0	0	0.0	0	0.0	0	0.0	0	0.0	0	0	0.0	0	0.0
	2016	0	0	0.0	0	0.0	0	0.0	0	0.0	0	0	0.0	0	0.0
	2017	0	0	0.0	0	0.0	0	0.0	0	0.0	0	0	0.0	0	0.0

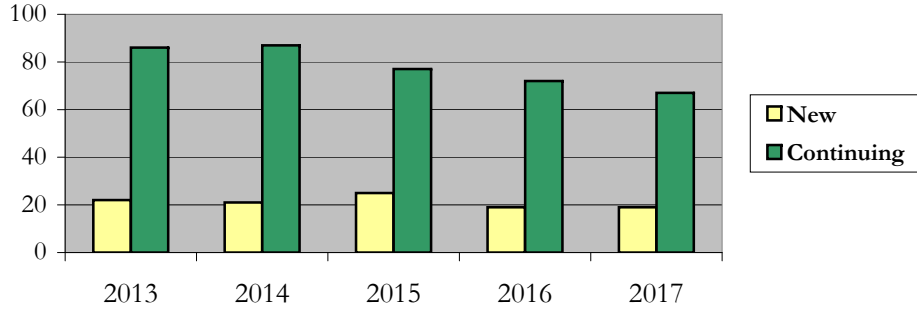
Enrollment

by Student Type, Enrollment Time, and Gender (All Students)

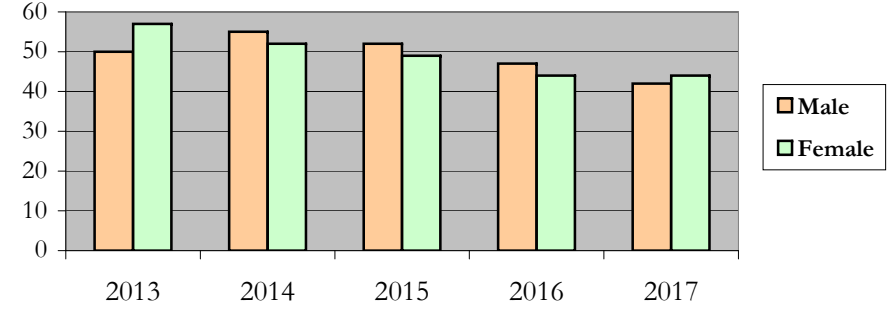
English

Fall 2013 - Fall 2017

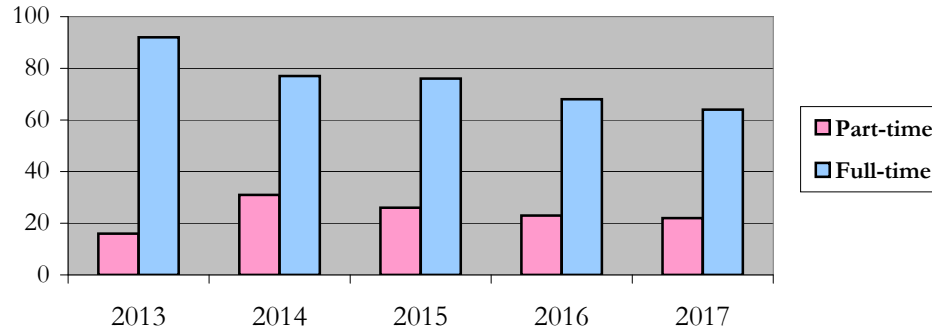
New and Continuing Enrollment



Enrollment by Gender



Enrollment by Student Enrollment Time

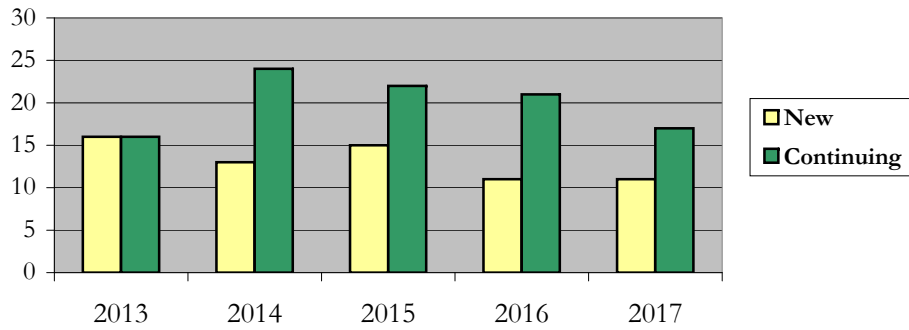


Enrollment
by Student Type, Enrollment Time, and Gender (Master's Students)

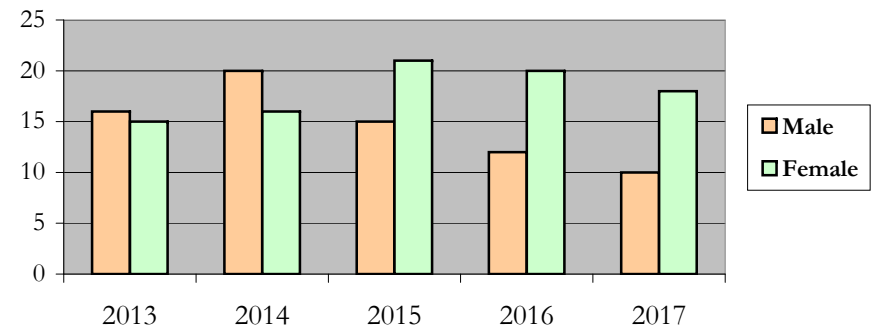
English

Fall 2013 - Fall 2017

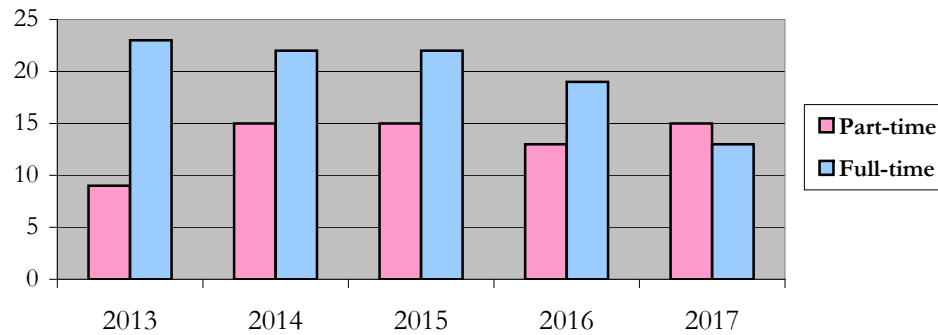
New and Continuing Enrollment



Enrollment by Gender



Enrollment by Student Enrollment Time

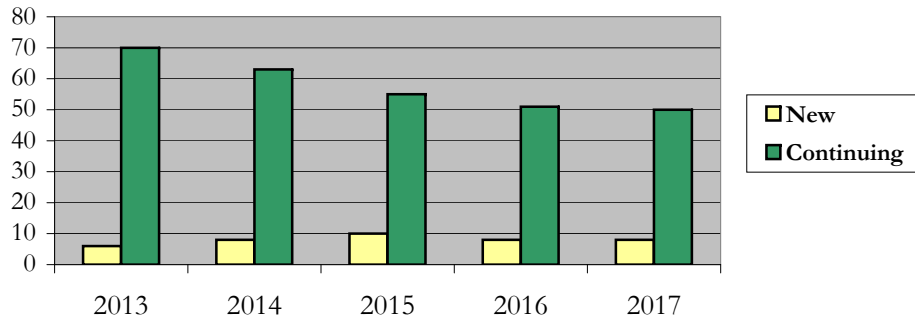


Enrollment by Student Type, Enrollment Time, and Gender (Doctorate Students)

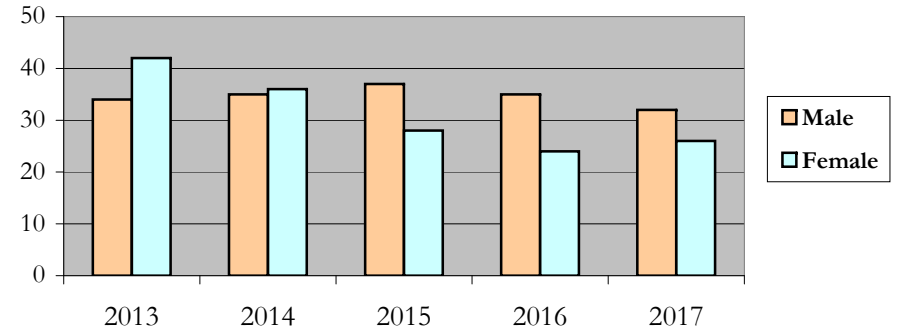
English

Fall 2013 - Fall 2017

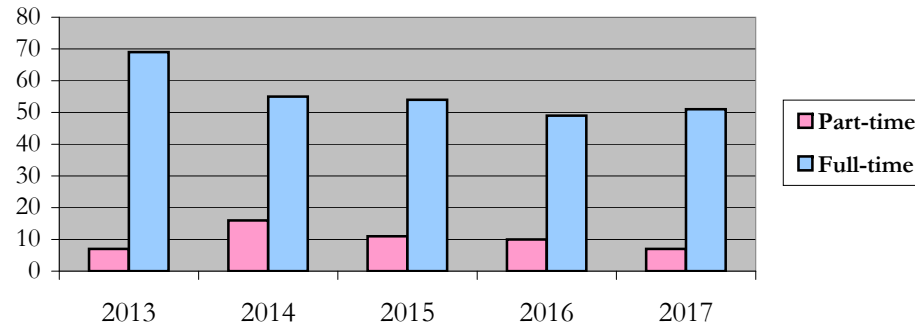
New and Continuing Enrollment



Enrollment by Gender



Enrollment by Student Enrollment Time



Degrees Conferred by Race/Ethnicity

English

Fall 2013 - Fall 2017

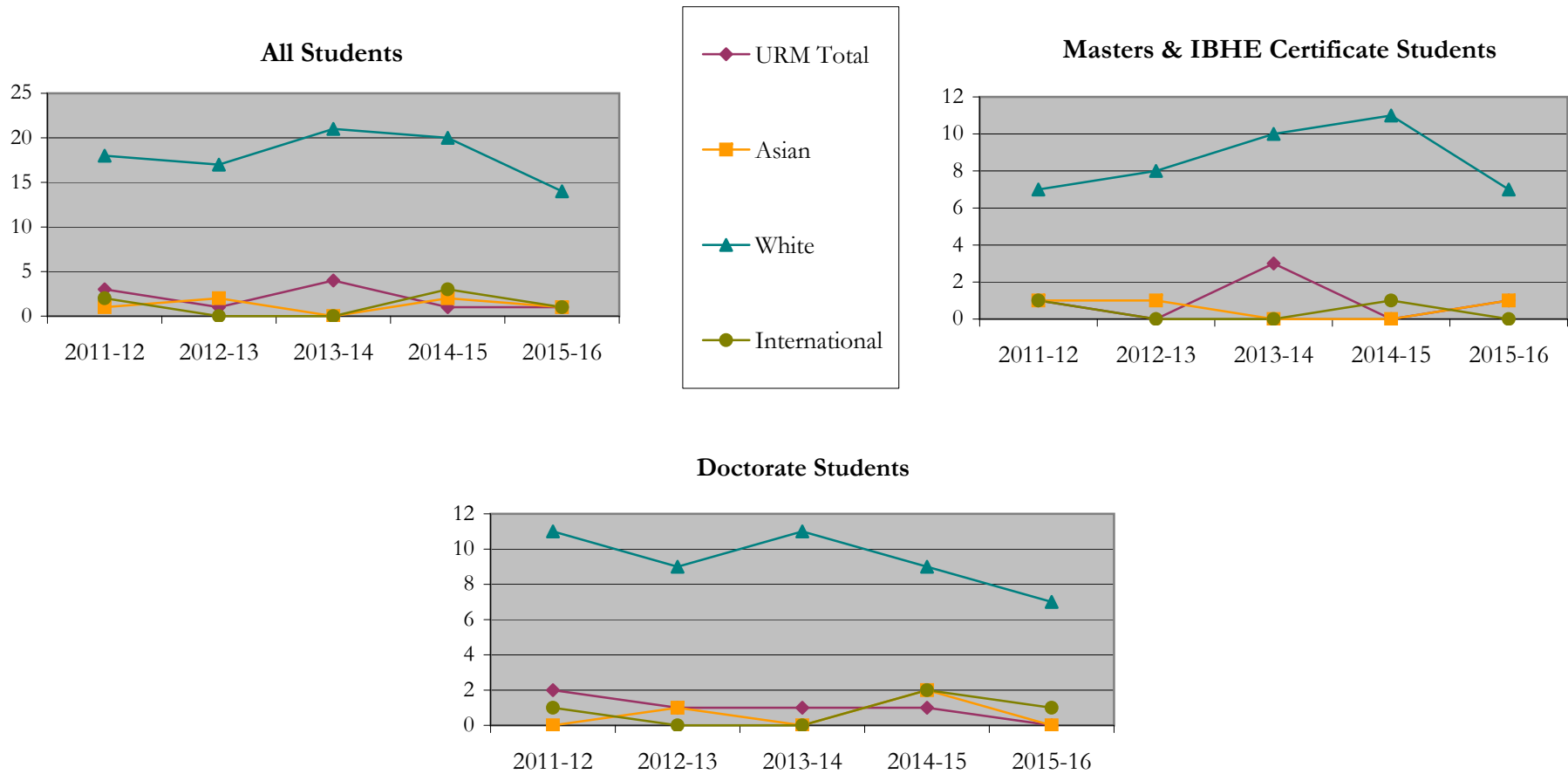
		Total	Under Represented Minorities (URM)								Asian	Native Hawaiian or Pacific Islander		White		Two or More Races		International		Not Reported	
			American Indian or Alaska Native		Black or African American		Hispanic / Latino		URM Total			Count	%	Count	%	Count	%	Count	%	Count	%
			Count	%	Count	%	Count	%	Count	%											
All	2012 - 13	25	0	0.0	1	4.0	2	8.0	3	12.0	1	4.0	0	0.0	18	72.0	0	0.0	2	8.0	1
	2013 - 14	22	0	0.0	1	4.5	0	0.0	1	4.5	2	9.1	0	0.0	17	77.3	1	4.5	0	0.0	1
	2014 - 15	26	0	0.0	3	11.5	1	3.8	4	15.4	0	0.0	0	0.0	21	80.8	1	3.8	0	0.0	0
	2015 - 16	31	0	0.0	1	3.2	0	0.0	1	3.2	2	6.5	0	0.0	20	64.5	2	6.5	3	9.7	3
	2016 - 17	17	0	0.0	0	0.0	1	5.9	1	5.9	1	5.9	0	0.0	14	82.4	0	0.0	1	5.9	0
Masters & IBHE Certificate	2012 - 13	11	0	0.0	0	0.0	1	9.1	1	9.1	1	9.1	0	0.0	7	63.6	0	0.0	1	9.1	1
	2013 - 14	10	0	0.0	0	0.0	0	0.0	0	0.0	1	10.0	0	0.0	8	80.0	0	0.0	0	0.0	1
	2014 - 15	14	0	0.0	2	14.3	1	7.1	3	21.4	0	0.0	0	0.0	10	71.4	1	7.1	0	0.0	0
	2015 - 16	16	0	0.0	0	0.0	0	0.0	0	0.0	0	0.0	0	0.0	11	68.8	1	6.3	1	6.3	3
	2016 - 17	9	0	0.0	0	0.0	1	11.1	1	11.1	1	11.1	0	0.0	7	77.8	0	0.0	0	0.0	0
Doctorate	2012 - 13	14	0	0.0	1	7.1	1	7.1	2	14.3	0	0.0	0	0.0	11	78.6	0	0.0	1	7.1	0
	2013 - 14	12	0	0.0	1	8.3	0	0.0	1	8.3	1	8.3	0	0.0	9	75.0	1	8.3	0	0.0	0
	2014 - 15	12	0	0.0	1	8.3	0	0.0	1	8.3	0	0.0	0	0.0	11	91.7	0	0.0	0	0.0	0
	2015 - 16	15	0	0.0	1	6.7	0	0.0	1	6.7	2	13.3	0	0.0	9	60.0	1	6.7	2	13.3	0
	2016 - 17	8	0	0.0	0	0.0	0	0.0	0	0.0	0	0.0	0	0.0	7	87.5	0	0.0	1	12.5	0
Non-Degree & Campus Certificate	2012 - 13	0	0	0.0	0	0.0	0	0.0	0	0.0	0	0.0	0	0.0	0	0.0	0	0.0	0	0.0	0
	2013 - 14	0	0	0.0	0	0.0	0	0.0	0	0.0	0	0.0	0	0.0	0	0.0	0	0.0	0	0.0	0
	2014 - 15	0	0	0.0	0	0.0	0	0.0	0	0.0	0	0.0	0	0.0	0	0.0	0	0.0	0	0.0	0
	2015 - 16	0	0	0.0	0	0.0	0	0.0	0	0.0	0	0.0	0	0.0	0	0.0	0	0.0	0	0.0	0
	2016 - 17	0	0	0.0	0	0.0	0	0.0	0	0.0	0	0.0	0	0.0	0	0.0	0	0.0	0	0.0	0

Note: Each row represents a fiscal year, beginning with Summer term and ending with Spring.

Degrees Conferred by Race/Ethnicity

English

Fall 2013 - Fall 2017



Notes: 1) URM stands for Under-Represented Minority and includes American Indian or Alaska Native; Black or African-American; Hispanic / Latino race/ethnicity groups

2) Individual URM groups, Native Hawaiian Pacific Islander, Two or More Races, and Other race/ethnicity categories left off this charts due to relatively low numbers

**Degrees Conferred
by Gender**

English

Fall 2013 - Fall 2017

		Total	Male		Female		Not Reported
			Count	%	Count	%	
All	2012 - 13	25	9	36.0	16	64.0	0
	2013 - 14	22	8	36.4	14	63.6	0
	2014 - 15	26	10	38.5	16	61.5	0
	2015 - 16	31	15	48.4	15	48.4	1
	2016 - 17	17	9	52.9	8	47.1	0
Masters & IBHE Certificate	2012 - 13	11	3	27.3	8	72.7	0
	2013 - 14	10	4	40.0	6	60.0	0
	2014 - 15	14	7	50.0	7	50.0	0
	2015 - 16	16	9	56.3	6	37.5	1
	2016 - 17	9	4	44.4	5	55.6	0
Doctorate	2012 - 13	14	6	42.9	8	57.1	0
	2013 - 14	12	4	33.3	8	66.7	0
	2014 - 15	12	3	25.0	9	75.0	0
	2015 - 16	15	6	40.0	9	60.0	0
	2016 - 17	8	5	62.5	3	37.5	0
Campus Certificates	2012 - 13	0	0	0.0	0	0.0	0
	2013 - 14	0	0	0.0	0	0.0	0
	2014 - 15	0	0	0.0	0	0.0	0
	2015 - 16	0	0	0.0	0	0.0	0
	2016 - 17	0	0	0.0	0	0.0	0

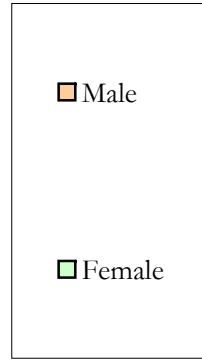
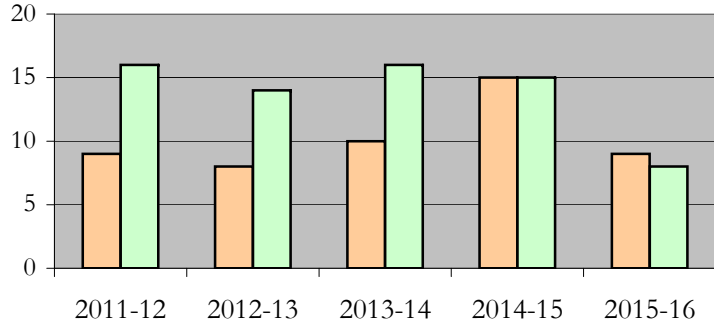
Note: Each row represents a fiscal year, beginning with Summer term and ending with Spring.

Degrees Conferred by Gender

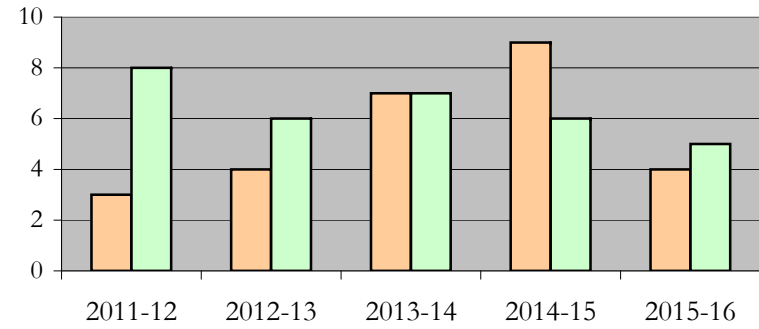
English

Fall 2013 - Fall 2017

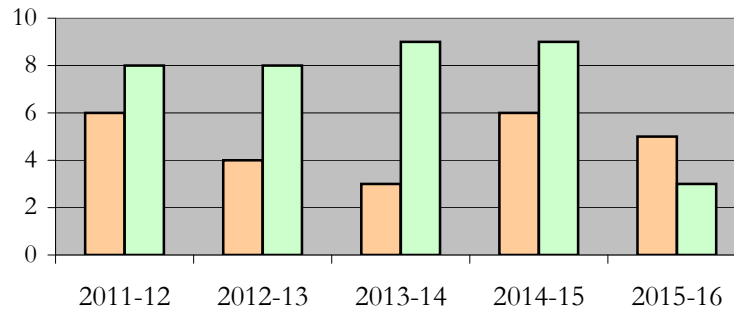
All Students



Masters & IBHE Certificate Students



Doctorate Students



Appendix A

English

Fall 2013 - Fall 2017

List of program codes included in this document

20FS0311PHD

20FS0311MA

Notes: 1) Program codes are sorted by alphabetical order in column-wise fashion

2) Program codes highlighted in yellow did not have applications, enrollment, nor degrees conferred in the covered period