

# Matriculation

## Diversity Pipeline

Economics

Fall 2013 - Fall 2017

	Fall Semester Year	Applied					Admitted					Non-URM Admitted to Applied Yield %	URM Admitted to Applied Yield %	New Enrollment					Non-URM Enrolled to Admitted Yield %	URM Enrolled to Admitted Yield %	Total Enrollment				
		Grand Total	Non-URM Total		URM Total		Grand Total	Non-URM Total		URM Total				Grand Total	Non-URM Total		URM Total				Grand Total	Non-URM Total		URM Total	
			Count	%	Count	%		Count	%	Count	%				Count	%	Count	%				Count	%	Count	%
All	2013	254	246	96.9%	8	3.1%	56	56	100.0%	0	0.0%	22.8%	0.0%	12	12	100.0%	0	0.0%	21.4%	0.0%	90	87	96.7%	3	3.3%
	2014	203	197	97.0%	6	3.0%	45	44	97.8%	1	2.2%	22.3%	16.7%	15	14	93.3%	1	6.7%	31.8%	100.0%	78	75	96.2%	3	3.8%
	2015	177	167	94.4%	10	5.6%	43	42	97.7%	1	2.3%	25.1%	10.0%	15	15	100.0%	0	0.0%	35.7%	0.0%	70	69	98.6%	1	1.4%
	2016	187	177	94.7%	10	5.3%	43	41	95.3%	2	4.7%	23.2%	20.0%	8	8	100.0%	0	0.0%	19.5%	0.0%	65	64	98.5%	1	1.5%
	2017	144	141	97.9%	3	2.1%	19	19	100.0%	0	0.0%	13.5%	0.0%	7	7	100.0%	0	0.0%	36.8%	0.0%	60	60	100.0%	0	0.0%
	Average	193	186	96.2%	7	3.8%	41	40	98.1%	1	1.9%	21.8%	10.8%	11	11	98.2%	0	1.8%	27.7%	25.0%	73	71	97.8%	2	2.2%
Masters & IBHE Certificate	2013	94	91	96.8%	3	3.2%	8	8	100.0%	0	0.0%	8.8%	0.0%	1	1	100.0%	0	0.0%	12.5%	0.0%	19	19	100.0%	0	0.0%
	2014	58	57	98.3%	1	1.7%	4	3	75.0%	1	25.0%	5.3%	100.0%	1	0	0.0%	1	100.0%	0.0%	100.0%	6	5	83.3%	1	16.7%
	2015	47	42	89.4%	5	10.6%	1	1	100.0%	0	0.0%	2.4%	0.0%	0	0	0.0%	0	0.0%	0.0%	0.0%	0	0	0.0%	0	0.0%
	2016	29	25	86.2%	4	13.8%	1	1	100.0%	0	0.0%	4.0%	0.0%	0	0	0.0%	0	0.0%	0.0%	0.0%	0	0	0.0%	0	0.0%
	2017	37	37	100.0%	0	0.0%	2	2	100.0%	0	0.0%	5.4%	0.0%	0	0	0.0%	0	0.0%	0.0%	0.0%	0	0	0.0%	0	0.0%
	Average	53	50	95.1%	3	4.9%	3	3	93.8%	0	6.3%	6.0%	7.7%	0	0	50.0%	0	50.0%	6.7%	100.0%	5	5	96.0%	0	4.0%
Doctorate	2013	160	155	96.9%	5	3.1%	48	48	100.0%	0	0.0%	31.0%	0.0%	11	11	100.0%	0	0.0%	22.9%	0.0%	71	68	95.8%	3	4.2%
	2014	145	140	96.6%	5	3.4%	41	41	100.0%	0	0.0%	29.3%	0.0%	14	14	100.0%	0	0.0%	34.1%	0.0%	72	70	97.2%	2	2.8%
	2015	130	125	96.2%	5	3.8%	42	41	97.6%	1	2.4%	32.8%	20.0%	15	15	100.0%	0	0.0%	36.6%	0.0%	70	69	98.6%	1	1.4%
	2016	158	152	96.2%	6	3.8%	42	40	95.2%	2	4.8%	26.3%	33.3%	8	8	100.0%	0	0.0%	20.0%	0.0%	65	64	98.5%	1	1.5%
	2017	107	104	97.2%	3	2.8%	17	17	100.0%	0	0.0%	16.3%	0.0%	7	7	100.0%	0	0.0%	41.2%	0.0%	60	60	100.0%	0	0.0%
	Average	140	135	96.6%	5	3.4%	38	37	98.4%	1	1.6%	27.7%	12.5%	11	11	100.0%	0	0.0%	29.4%	0.0%	68	66	97.9%	1	2.1%
Non-Degree & Campus Certificate	2013	0	0	0.0%	0	0.0%	0	0	0.0%	0	0.0%	0.0%	0.0%	0	0	0.0%	0	0.0%	0.0%	0.0%	0	0	0.0%	0	0.0%
	2014	0	0	0.0%	0	0.0%	0	0	0.0%	0	0.0%	0.0%	0.0%	0	0	0.0%	0	0.0%	0.0%	0.0%	0	0	0.0%	0	0.0%
	2015	0	0	0.0%	0	0.0%	0	0	0.0%	0	0.0%	0.0%	0.0%	0	0	0.0%	0	0.0%	0.0%	0.0%	0	0	0.0%	0	0.0%
	2016	0	0	0.0%	0	0.0%	0	0	0.0%	0	0.0%	0.0%	0.0%	0	0	0.0%	0	0.0%	0.0%	0.0%	0	0	0.0%	0	0.0%
	2017	0	0	0.0%	0	0.0%	0	0	0.0%	0	0.0%	0.0%	0.0%	0	0	0.0%	0	0.0%	0.0%	0.0%	0	0	0.0%	0	0.0%
	Average	0	0	0.0%	0	0.0%	0	0	0.0%	0	0.0%	0.0%	0.0%	0	0	0.0%	0	0.0%	0.0%	0.0%	0	0	0.0%	0	0.0%

**Note:** URM stands for Under-Represented Minority and includes American Indian or Alaska Native; Black or African-American; Hispanic / Latino race/ethnicity groups

# Applications - Total by Race/Ethnicity

Economics

Fall 2013 - Fall 2017

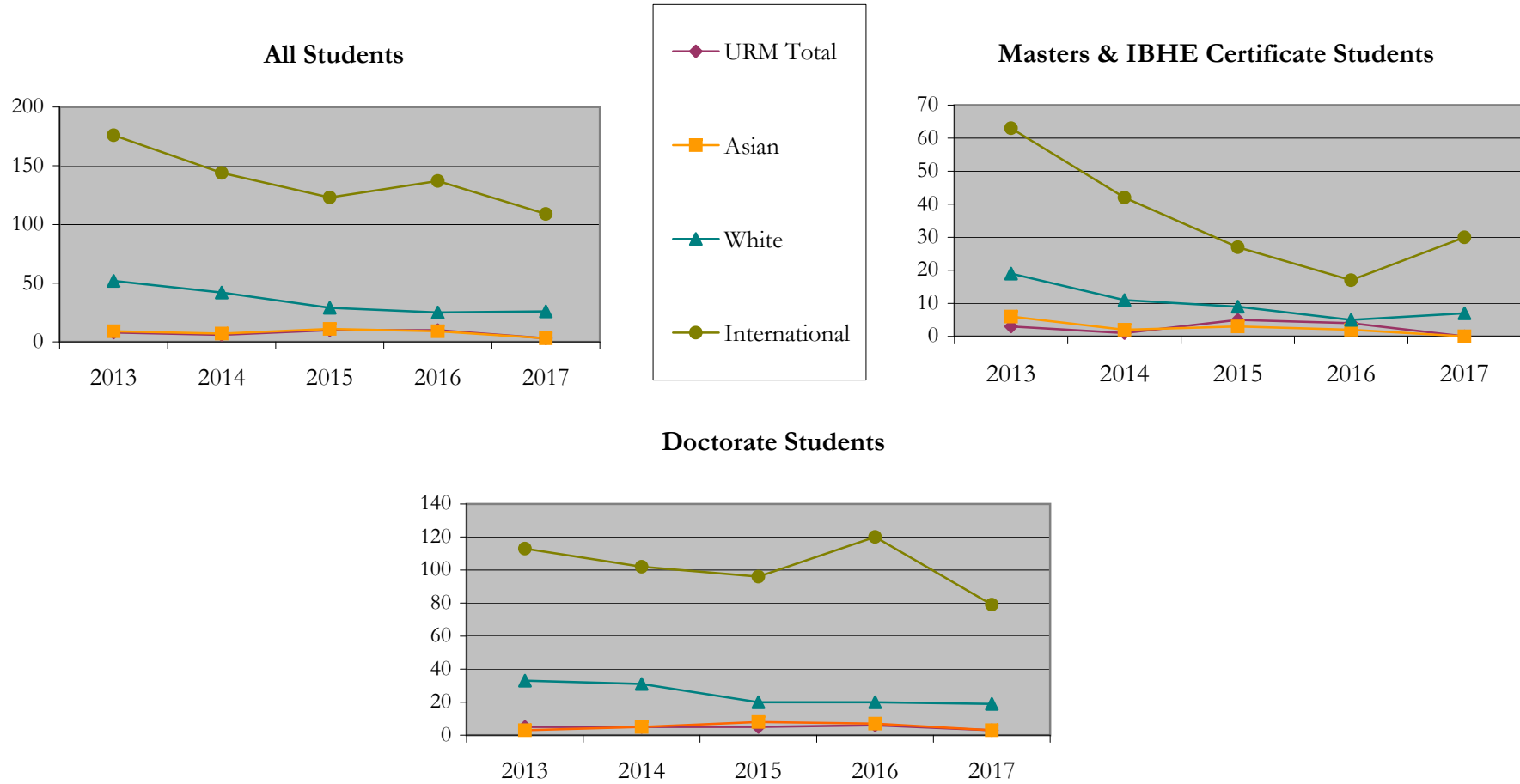
		Total	Under Represented Minorities (URM)																Not Reported		
			American Indian or Alaska Native		Black or African American		Hispanic / Latino		URM Total		Asian		Native Hawaiian or Pacific Islander		White		Two or More Races			International	
			Count	%	Count	%	Count	%	Count	%	Count	%	Count	%	Count	%	Count	%		Count	%
All	2013	254	0	0.0	6	2.4	2	0.8	8	3.1	9	3.5	0	0.0	52	20.5	4	1.6	176	69.3	5
	2014	203	0	0.0	3	1.5	3	1.5	6	3.0	7	3.4	0	0.0	42	20.7	1	0.5	144	70.9	3
	2015	177	1	0.6	5	2.8	4	2.3	10	5.6	11	6.2	0	0.0	29	16.4	3	1.7	123	69.5	1
	2016	187	0	0.0	4	2.1	6	3.2	10	5.3	9	4.8	0	0.0	25	13.4	2	1.1	137	73.3	4
	2017	144	0	0.0	0	0.0	3	2.1	3	2.1	3	2.1	0	0.0	26	18.1	1	0.7	109	75.7	2
Masters & IBHE Certificate	2013	94	0	0.0	2	2.1	1	1.1	3	3.2	6	6.4	0	0.0	19	20.2	1	1.1	63	67.0	2
	2014	58	0	0.0	0	0.0	1	1.7	1	1.7	2	3.4	0	0.0	11	19.0	0	0.0	42	72.4	2
	2015	47	1	2.1	3	6.4	1	2.1	5	10.6	3	6.4	0	0.0	9	19.1	3	6.4	27	57.4	0
	2016	29	0	0.0	2	6.9	2	6.9	4	13.8	2	6.9	0	0.0	5	17.2	0	0.0	17	58.6	1
	2017	37	0	0.0	0	0.0	0	0.0	0	0.0	0	0.0	0	0.0	7	18.9	0	0.0	30	81.1	0
Doctorate	2013	160	0	0.0	4	2.5	1	0.6	5	3.1	3	1.9	0	0.0	33	20.6	3	1.9	113	70.6	3
	2014	145	0	0.0	3	2.1	2	1.4	5	3.4	5	3.4	0	0.0	31	21.4	1	0.7	102	70.3	1
	2015	130	0	0.0	2	1.5	3	2.3	5	3.8	8	6.2	0	0.0	20	15.4	0	0.0	96	73.8	1
	2016	158	0	0.0	2	1.3	4	2.5	6	3.8	7	4.4	0	0.0	20	12.7	2	1.3	120	75.9	3
	2017	107	0	0.0	0	0.0	3	2.8	3	2.8	3	2.8	0	0.0	19	17.8	1	0.9	79	73.8	2
Non-Degree & Campus Certificate	2013	0	0	0.0	0	0.0	0	0.0	0	0.0	0	0.0	0	0.0	0	0.0	0	0.0	0	0.0	0
	2014	0	0	0.0	0	0.0	0	0.0	0	0.0	0	0.0	0	0.0	0	0.0	0	0.0	0	0.0	0
	2015	0	0	0.0	0	0.0	0	0.0	0	0.0	0	0.0	0	0.0	0	0.0	0	0.0	0	0.0	0
	2016	0	0	0.0	0	0.0	0	0.0	0	0.0	0	0.0	0	0.0	0	0.0	0	0.0	0	0.0	0
	2017	0	0	0.0	0	0.0	0	0.0	0	0.0	0	0.0	0	0.0	0	0.0	0	0.0	0	0.0	0

**Note:** URM stands for Under-Represented Minority and includes American Indian or Alaska Native; Black or African-American; Hispanic / Latino race/ethnicity groups

# Applications - Total by Race/Ethnicity

Economics

Fall 2013 - Fall 2017



**Notes:** 1) URM stands for Under-Represented Minority and includes American Indian or Alaska Native; Black or African-American; Hispanic / Latino race/ethnicity groups  
 2) Individual URM groups, Native Hawaiian Pacific Islander, Two or More Races, and Other race/ethnicity categories left off this charts due to relatively low numbers

**Applications - Admitted  
by Race/Ethnicity**

Economics

Fall 2013 - Fall 2017

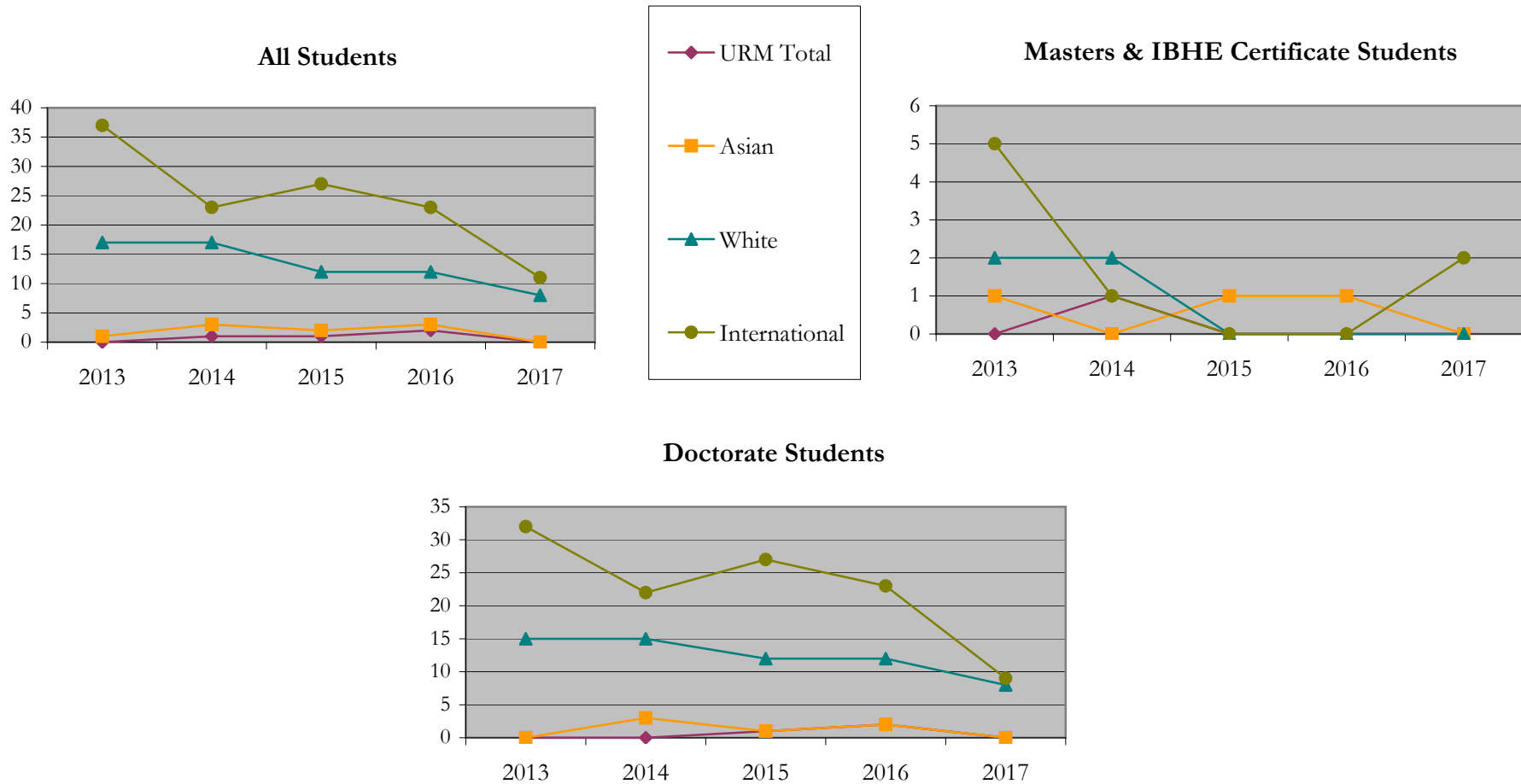
		Total	Under Represented Minorities (URM)								Asian		Native Hawaiian or Pacific Islander		White		Two or More Races		International		Not Reported
			American Indian or Alaska Native		Black or African American		Hispanic / Latino		URM Total												
			Count	%	Count	%	Count	%	Count	%											
All	2013	56	0	0.0	0	0.0	0	0.0	0	0.0	1	1.8	0	0.0	17	30.4	0	0.0	37	66.1	1
	2014	45	0	0.0	0	0.0	1	2.2	1	2.2	3	6.7	0	0.0	17	37.8	1	2.2	23	51.1	0
	2015	43	0	0.0	0	0.0	1	2.3	1	2.3	2	4.7	0	0.0	12	27.9	0	0.0	27	62.8	1
	2016	43	0	0.0	0	0.0	2	4.7	2	4.7	3	7.0	0	0.0	12	27.9	2	4.7	23	53.5	1
	2017	19	0	0.0	0	0.0	0	0.0	0	0.0	0	0.0	0	0.0	8	42.1	0	0.0	11	57.9	0
Masters & IBHE Certificate	2013	8	0	0.0	0	0.0	0	0.0	0	0.0	1	12.5	0	0.0	2	25.0	0	0.0	5	62.5	0
	2014	4	0	0.0	0	0.0	1	25.0	1	25.0	0	0.0	0	0.0	2	50.0	0	0.0	1	25.0	0
	2015	1	0	0.0	0	0.0	0	0.0	0	0.0	1	100.0	0	0.0	0	0.0	0	0.0	0	0.0	0
	2016	1	0	0.0	0	0.0	0	0.0	0	0.0	1	100.0	0	0.0	0	0.0	0	0.0	0	0.0	0
	2017	2	0	0.0	0	0.0	0	0.0	0	0.0	0	0.0	0	0.0	0	0.0	0	0.0	2	100.0	0
Doctorate	2013	48	0	0.0	0	0.0	0	0.0	0	0.0	0	0.0	0	0.0	15	31.3	0	0.0	32	66.7	1
	2014	41	0	0.0	0	0.0	0	0.0	0	0.0	3	7.3	0	0.0	15	36.6	1	2.4	22	53.7	0
	2015	42	0	0.0	0	0.0	1	2.4	1	2.4	1	2.4	0	0.0	12	28.6	0	0.0	27	64.3	1
	2016	42	0	0.0	0	0.0	2	4.8	2	4.8	2	4.8	0	0.0	12	28.6	2	4.8	23	54.8	1
	2017	17	0	0.0	0	0.0	0	0.0	0	0.0	0	0.0	0	0.0	8	47.1	0	0.0	9	52.9	0
Non-Degree & Campus Certificate	2013	0	0	0.0	0	0.0	0	0.0	0	0.0	0	0.0	0	0.0	0	0.0	0	0.0	0	0.0	0
	2014	0	0	0.0	0	0.0	0	0.0	0	0.0	0	0.0	0	0.0	0	0.0	0	0.0	0	0.0	0
	2015	0	0	0.0	0	0.0	0	0.0	0	0.0	0	0.0	0	0.0	0	0.0	0	0.0	0	0.0	0
	2016	0	0	0.0	0	0.0	0	0.0	0	0.0	0	0.0	0	0.0	0	0.0	0	0.0	0	0.0	0
	2017	0	0	0.0	0	0.0	0	0.0	0	0.0	0	0.0	0	0.0	0	0.0	0	0.0	0	0.0	0

**Note:** URM stands for Under-Represented Minority and includes American Indian or Alaska Native; Black or African-American; Hispanic / Latino race/ethnicity groups

# Applications - Admitted by Race/Ethnicity

Economics

Fall 2013 - Fall 2017



**Notes:** 1) URM stands for Under-Represented Minority and includes American Indian or Alaska Native; Black or African-American; Hispanic / Latino race/ethnicity groups

2) Individual URM groups, Native Hawaiian Pacific Islander, Two or More Races, and Other race/ethnicity categories left off this charts due to relatively low numbers

# Enrollment - New by Race/Ethnicity

Economics

Fall 2013 - Fall 2017

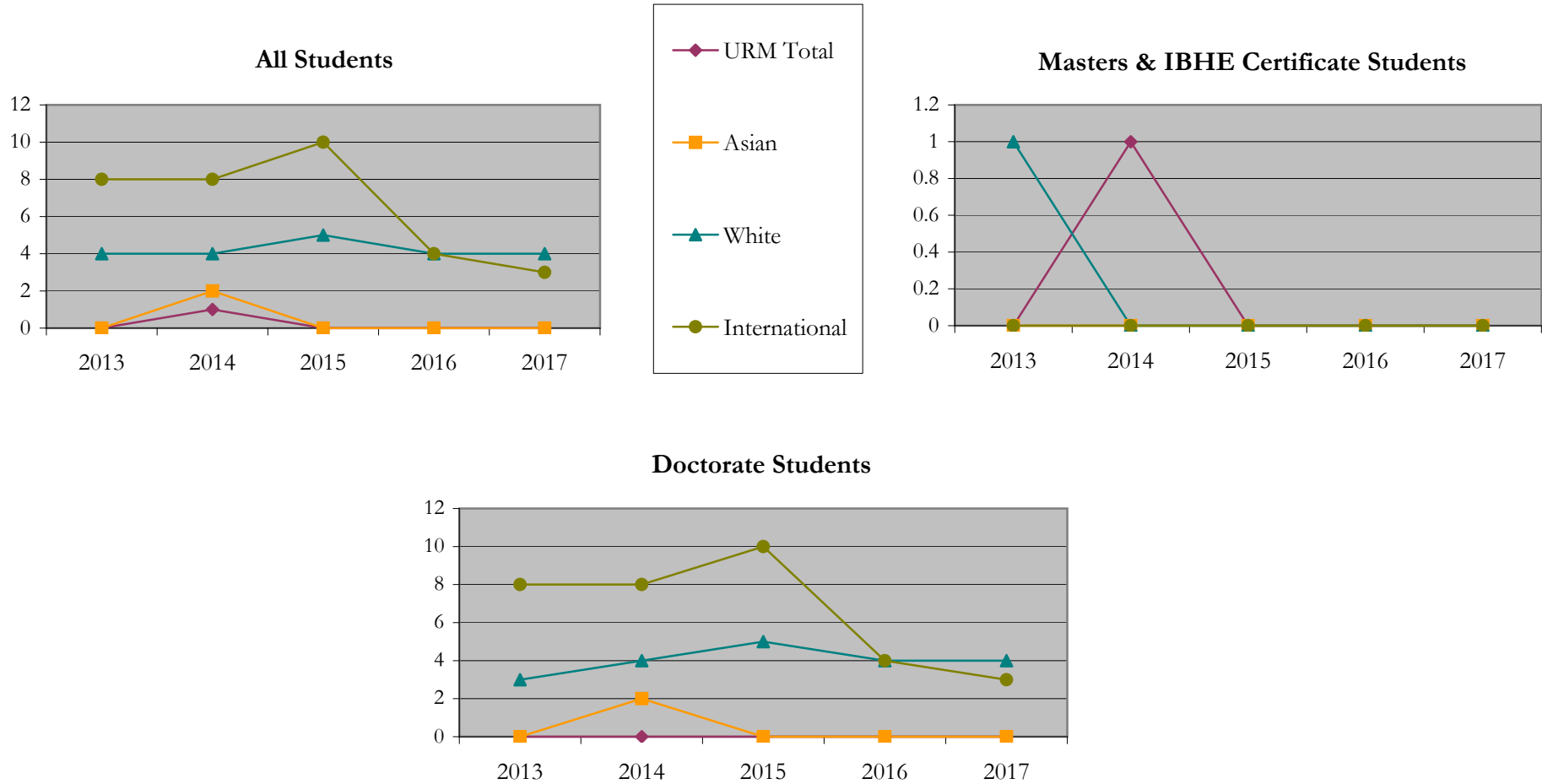
		Total	Under Represented Minorities (URM)								Asian		Native Hawaiian or Pacific Islander		White		Two or More Races		International		Not Reported
			American Indian or Alaska Native		Black or African American		Hispanic / Latino		URM Total												
			Count	%	Count	%	Count	%	Count	%											
All	2013	12	0	0.0	0	0.0	0	0.0	0	0.0	0	0.0	0	0.0	4	33.3	0	0.0	8	66.7	0
	2014	15	0	0.0	0	0.0	1	6.7	1	6.7	2	13.3	0	0.0	4	26.7	0	0.0	8	53.3	0
	2015	15	0	0.0	0	0.0	0	0.0	0	0.0	0	0.0	0	0.0	5	33.3	0	0.0	10	66.7	0
	2016	8	0	0.0	0	0.0	0	0.0	0	0.0	0	0.0	0	0.0	4	50.0	0	0.0	4	50.0	0
	2017	7	0	0.0	0	0.0	0	0.0	0	0.0	0	0.0	0	0.0	4	57.1	0	0.0	3	42.9	0
Masters & IBHE Certificate	2013	1	0	0.0	0	0.0	0	0.0	0	0.0	0	0.0	0	0.0	1	100.0	0	0.0	0	0.0	0
	2014	1	0	0.0	0	0.0	1	100.0	1	100.0	0	0.0	0	0.0	0	0.0	0	0.0	0	0.0	0
	2015	0	0	0.0	0	0.0	0	0.0	0	0.0	0	0.0	0	0.0	0	0.0	0	0.0	0	0.0	0
	2016	0	0	0.0	0	0.0	0	0.0	0	0.0	0	0.0	0	0.0	0	0.0	0	0.0	0	0.0	0
	2017	0	0	0.0	0	0.0	0	0.0	0	0.0	0	0.0	0	0.0	0	0.0	0	0.0	0	0.0	0
Doctorate	2013	11	0	0.0	0	0.0	0	0.0	0	0.0	0	0.0	0	0.0	3	27.3	0	0.0	8	72.7	0
	2014	14	0	0.0	0	0.0	0	0.0	0	0.0	2	14.3	0	0.0	4	28.6	0	0.0	8	57.1	0
	2015	15	0	0.0	0	0.0	0	0.0	0	0.0	0	0.0	0	0.0	5	33.3	0	0.0	10	66.7	0
	2016	8	0	0.0	0	0.0	0	0.0	0	0.0	0	0.0	0	0.0	4	50.0	0	0.0	4	50.0	0
	2017	7	0	0.0	0	0.0	0	0.0	0	0.0	0	0.0	0	0.0	4	57.1	0	0.0	3	42.9	0
Non-Degree & Campus Certificate	2013	0	0	0.0	0	0.0	0	0.0	0	0.0	0	0.0	0	0.0	0	0.0	0	0.0	0	0.0	0
	2014	0	0	0.0	0	0.0	0	0.0	0	0.0	0	0.0	0	0.0	0	0.0	0	0.0	0	0.0	0
	2015	0	0	0.0	0	0.0	0	0.0	0	0.0	0	0.0	0	0.0	0	0.0	0	0.0	0	0.0	0
	2016	0	0	0.0	0	0.0	0	0.0	0	0.0	0	0.0	0	0.0	0	0.0	0	0.0	0	0.0	0
	2017	0	0	0.0	0	0.0	0	0.0	0	0.0	0	0.0	0	0.0	0	0.0	0	0.0	0	0.0	0

**Note:** URM stands for Under-Represented Minority and includes American Indian or Alaska Native; Black or African-American; Hispanic / Latino race/ethnicity groups

# Enrollment - New by Race/Ethnicity

Economics

Fall 2013 - Fall 2017



**Notes:** 1) URM stands for Under-Represented Minority and includes American Indian or Alaska Native; Black or African-American; Hispanic / Latino race/ethnicity groups

2) Individual URM groups, Native Hawaiian Pacific Islander, Two or More Races, and Other race/ethnicity categories left off this charts due to relatively low numbers

# Enrollment - Total by Race/Ethnicity

Economics

Fall 2013 - Fall 2017

		Total	Under Represented Minorities (URM)								Asian		Native Hawaiian or Pacific Islander		White		Two or More Races		International		Not Reported
			American Indian or Alaska Native		Black or African American		Hispanic / Latino		URM Total												
			Count	%	Count	%	Count	%	Count	%											
All	2013	90	0	0.0	1	1.1	2	2.2	3	3.3	7	7.8	0	0.0	35	38.9	0	0.0	45	50.0	0
	2014	78	0	0.0	0	0.0	3	3.8	3	3.8	8	10.3	0	0.0	26	33.3	0	0.0	41	52.6	0
	2015	70	0	0.0	0	0.0	1	1.4	1	1.4	6	8.6	0	0.0	22	31.4	0	0.0	40	57.1	1
	2016	65	0	0.0	0	0.0	1	1.5	1	1.5	5	7.7	0	0.0	22	33.8	0	0.0	37	56.9	0
	2017	60	0	0.0	0	0.0	0	0.0	0	0.0	4	6.7	0	0.0	23	38.3	0	0.0	33	55.0	0
Masters & IBHE Certificate	2013	19	0	0.0	0	0.0	0	0.0	0	0.0	2	10.5	0	0.0	10	52.6	0	0.0	7	36.8	0
	2014	6	0	0.0	0	0.0	1	16.7	1	16.7	1	16.7	0	0.0	4	66.7	0	0.0	0	0.0	0
	2015	0	0	0.0	0	0.0	0	0.0	0	0.0	0	0.0	0	0.0	0	0.0	0	0.0	0	0.0	0
	2016	0	0	0.0	0	0.0	0	0.0	0	0.0	0	0.0	0	0.0	0	0.0	0	0.0	0	0.0	0
	2017	0	0	0.0	0	0.0	0	0.0	0	0.0	0	0.0	0	0.0	0	0.0	0	0.0	0	0.0	0
Doctorate	2013	71	0	0.0	1	1.4	2	2.8	3	4.2	5	7.0	0	0.0	25	35.2	0	0.0	38	53.5	0
	2014	72	0	0.0	0	0.0	2	2.8	2	2.8	7	9.7	0	0.0	22	30.6	0	0.0	41	56.9	0
	2015	70	0	0.0	0	0.0	1	1.4	1	1.4	6	8.6	0	0.0	22	31.4	0	0.0	40	57.1	1
	2016	65	0	0.0	0	0.0	1	1.5	1	1.5	5	7.7	0	0.0	22	33.8	0	0.0	37	56.9	0
	2017	60	0	0.0	0	0.0	0	0.0	0	0.0	4	6.7	0	0.0	23	38.3	0	0.0	33	55.0	0
Non-Degree & Campus Certificate	2013	0	0	0.0	0	0.0	0	0.0	0	0.0	0	0.0	0	0.0	0	0.0	0	0.0	0	0.0	0
	2014	0	0	0.0	0	0.0	0	0.0	0	0.0	0	0.0	0	0.0	0	0.0	0	0.0	0	0.0	0
	2015	0	0	0.0	0	0.0	0	0.0	0	0.0	0	0.0	0	0.0	0	0.0	0	0.0	0	0.0	0
	2016	0	0	0.0	0	0.0	0	0.0	0	0.0	0	0.0	0	0.0	0	0.0	0	0.0	0	0.0	0
	2017	0	0	0.0	0	0.0	0	0.0	0	0.0	0	0.0	0	0.0	0	0.0	0	0.0	0	0.0	0

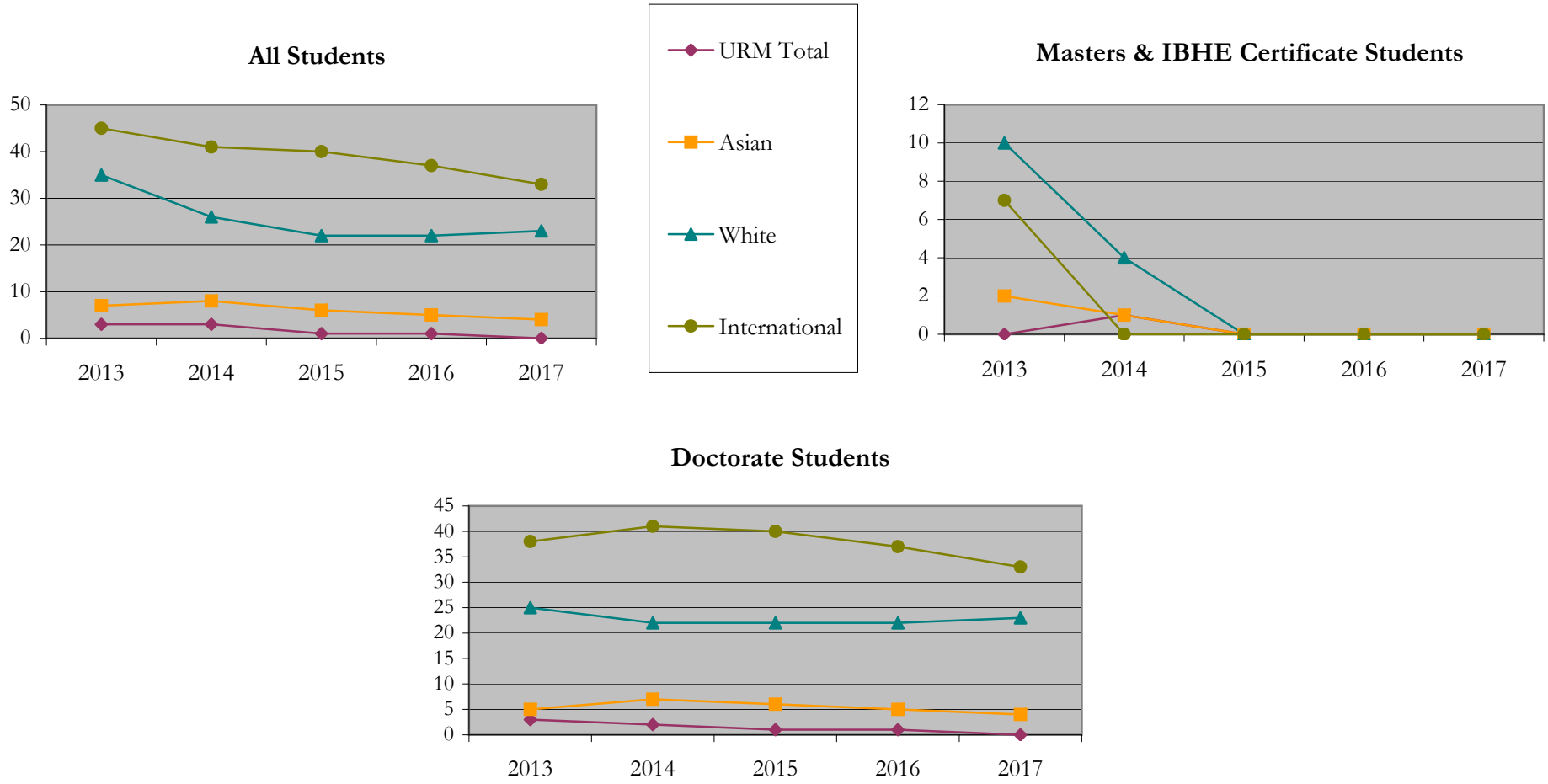
**Note:** URM stands for Under-Represented Minority and includes American Indian or Alaska Native; Black or African-American; Hispanic / Latino race/ethnicity groups



# Enrollment - Total by Race/Ethnicity

Economics

Fall 2013 - Fall 2017



**Notes:** 1) URM stands for Under-Represented Minority and includes American Indian or Alaska Native; Black or African-American; Hispanic / Latino race/ethnicity groups

2) Individual URM groups, Native Hawaiian Pacific Islander, Two or More Races, and Other race/ethnicity categories left off this charts due to relatively low numbers

# Enrollment

## by Student Type, Enrollment Time, and Gender

Economics

Fall 2013 - Fall 2017

		Total	New		Continuing		Male		Female		Gender Not Reported	Part-time		Full-time	
			Count	%	Count	%	Count	%	Count	%		Count	%	Count	%
All	2013	90	12	13.3	78	86.7	42	46.7	48	53.3	0	19	21.1	71	78.9
	2014	78	15	19.2	63	80.8	43	55.1	35	44.9	0	22	28.2	56	71.8
	2015	70	15	21.4	55	78.6	40	57.1	30	42.9	0	14	20.0	56	80.0
	2016	65	8	12.3	57	87.7	32	49.2	33	50.8	0	10	15.4	55	84.6
	2017	60	7	11.7	53	88.3	32	53.3	28	46.7	0	8	13.3	52	86.7
Masters & IBHE Certificate	2013	19	1	5.3	18	94.7	10	52.6	9	47.4	0	5	26.3	14	73.7
	2014	6	1	16.7	5	83.3	5	83.3	1	16.7	0	5	83.3	1	16.7
	2015	0	0	0.0	0	0.0	0	0.0	0	0.0	0	0	0.0	0	0.0
	2016	0	0	0.0	0	0.0	0	0.0	0	0.0	0	0	0.0	0	0.0
	2017	0	0	0.0	0	0.0	0	0.0	0	0.0	0	0	0.0	0	0.0
Doctorate	2013	71	11	15.5	60	84.5	32	45.1	39	54.9	0	14	19.7	57	80.3
	2014	72	14	19.4	58	80.6	38	52.8	34	47.2	0	17	23.6	55	76.4
	2015	70	15	21.4	55	78.6	40	57.1	30	42.9	0	14	20.0	56	80.0
	2016	65	8	12.3	57	87.7	32	49.2	33	50.8	0	10	15.4	55	84.6
	2017	60	7	11.7	53	88.3	32	53.3	28	46.7	0	8	13.3	52	86.7
Non-Degree & Campus Certificate	2013	0	0	0.0	0	0.0	0	0.0	0	0.0	0	0	0.0	0	0.0
	2014	0	0	0.0	0	0.0	0	0.0	0	0.0	0	0	0.0	0	0.0
	2015	0	0	0.0	0	0.0	0	0.0	0	0.0	0	0	0.0	0	0.0
	2016	0	0	0.0	0	0.0	0	0.0	0	0.0	0	0	0.0	0	0.0
	2017	0	0	0.0	0	0.0	0	0.0	0	0.0	0	0	0.0	0	0.0

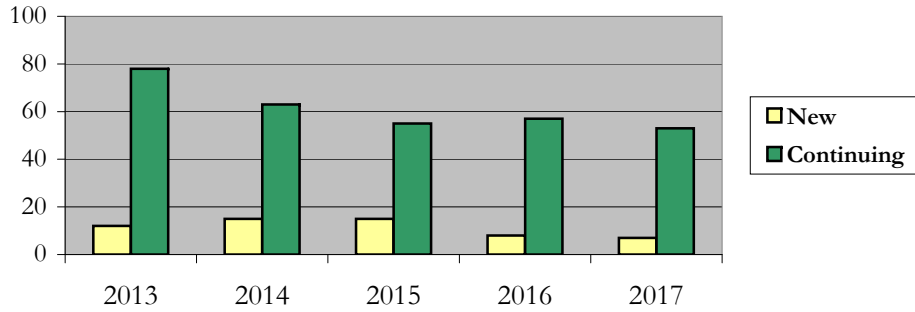
# Enrollment

## by Student Type, Enrollment Time, and Gender (All Students)

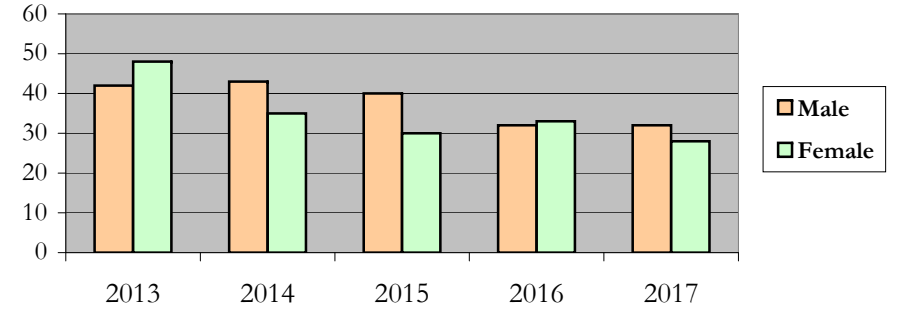
Economics

Fall 2013 - Fall 2017

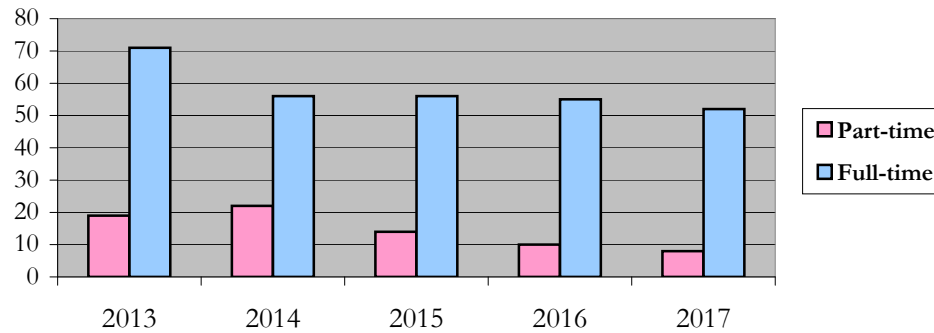
### New and Continuing Enrollment



### Enrollment by Gender



### Enrollment by Student Enrollment Time

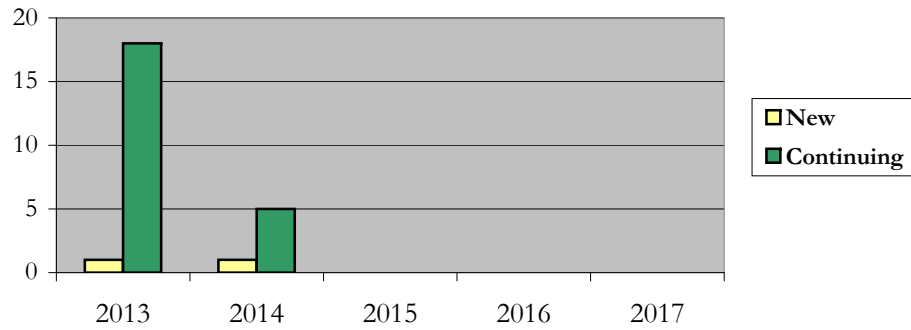


# Enrollment by Student Type, Enrollment Time, and Gender (Master's Students)

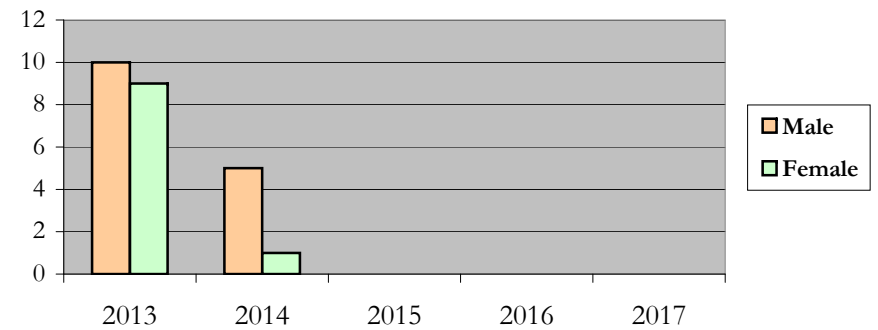
Economics

Fall 2013 - Fall 2017

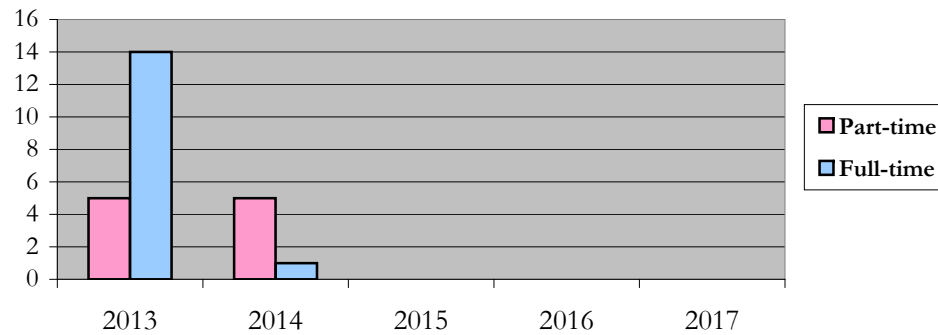
### New and Continuing Enrollment



### Enrollment by Gender



### Enrollment by Student Enrollment Time



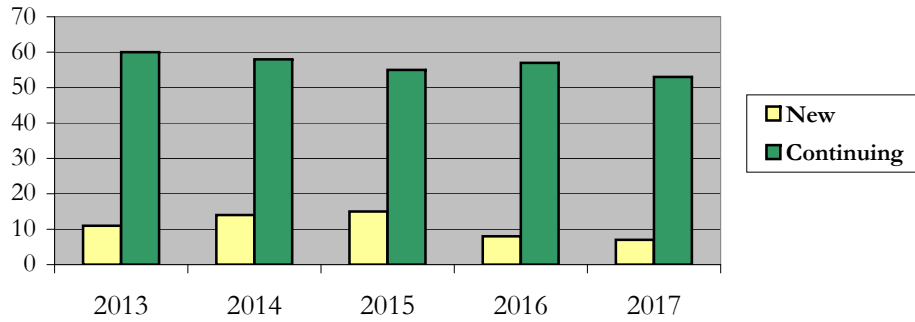
# Enrollment

## by Student Type, Enrollment Time, and Gender (Doctorate Students)

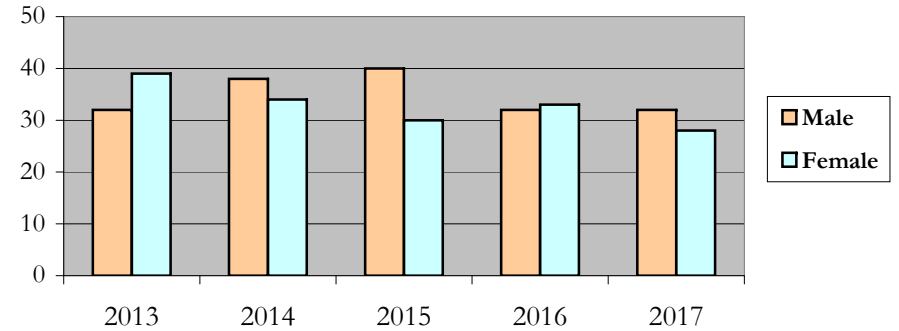
Economics

Fall 2013 - Fall 2017

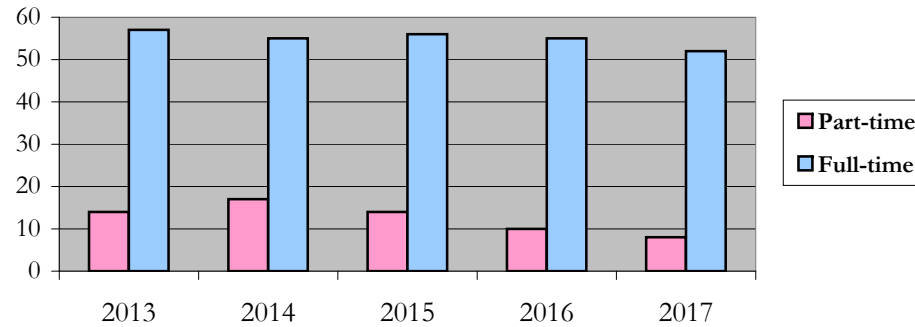
### New and Continuing Enrollment



### Enrollment by Gender



### Enrollment by Student Enrollment Time



# Degrees Conferred by Race/Ethnicity

Economics

Fall 2013 - Fall 2017

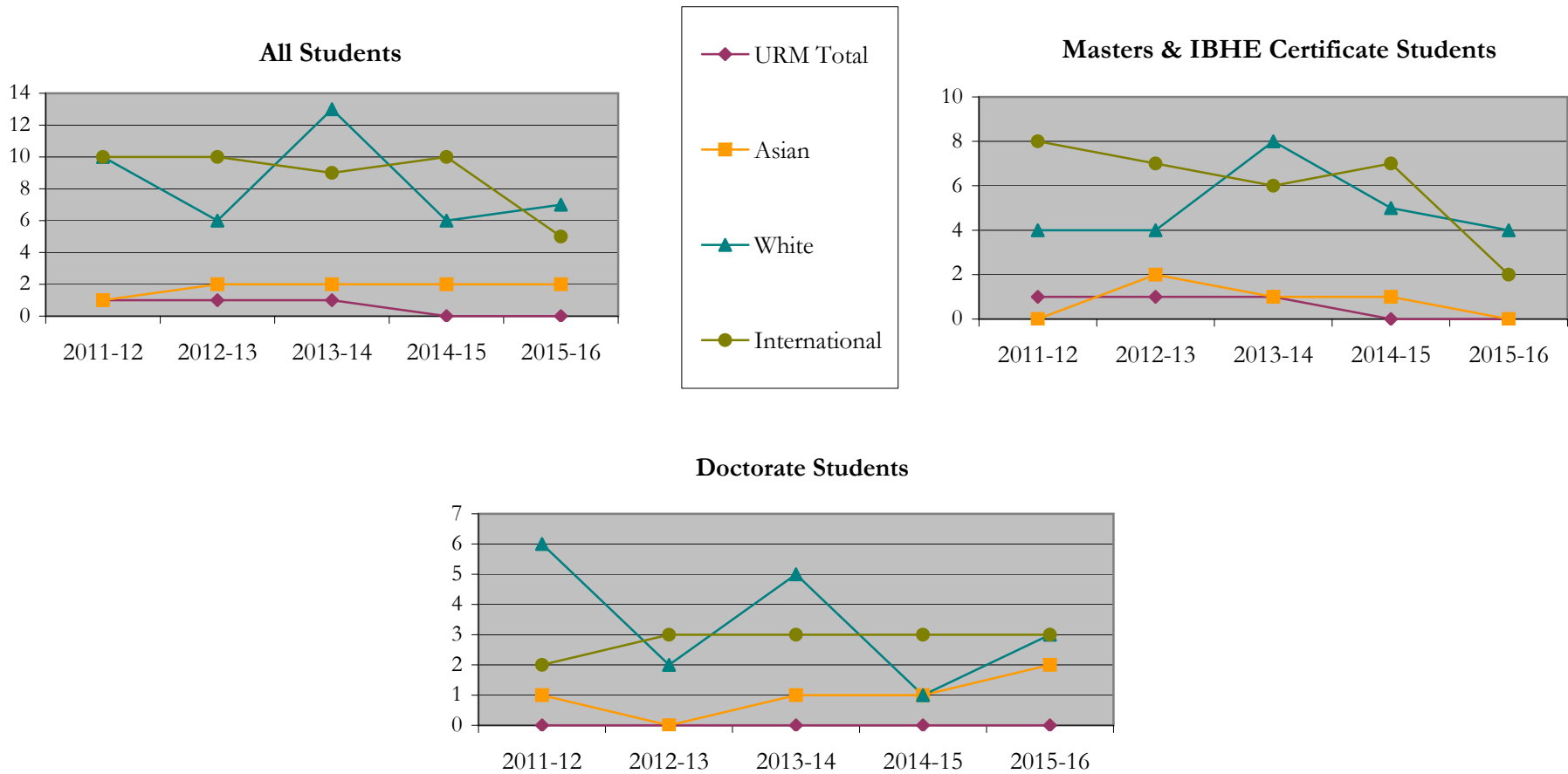
		Total	Under Represented Minorities (URM)								Asian	Native Hawaiian or Pacific Islander		White		Two or More Races		International		Not Reported	
			American Indian or Alaska Native		Black or African American		Hispanic / Latino		URM Total			Count	%	Count	%	Count	%	Count	%	Count	%
			Count	%	Count	%	Count	%	Count	%											
All	2012 - 13	22	0	0.0	1	4.5	0	0.0	1	4.5	1	4.5	0	0.0	10	45.5	0	0.0	10	45.5	0
	2013 - 14	19	0	0.0	0	0.0	1	5.3	1	5.3	2	10.5	0	0.0	6	31.6	0	0.0	10	52.6	0
	2014 - 15	25	0	0.0	0	0.0	1	4.0	1	4.0	2	8.0	0	0.0	13	52.0	0	0.0	9	36.0	0
	2015 - 16	20	0	0.0	0	0.0	0	0.0	0	0.0	2	10.0	0	0.0	6	30.0	1	5.0	10	50.0	1
	2016 - 17	14	0	0.0	0	0.0	0	0.0	0	0.0	2	14.3	0	0.0	7	50.0	0	0.0	5	35.7	0
Masters & IBHE Certificate	2012 - 13	13	0	0.0	1	7.7	0	0.0	1	7.7	0	0.0	0	0.0	4	30.8	0	0.0	8	61.5	0
	2013 - 14	14	0	0.0	0	0.0	1	7.1	1	7.1	2	14.3	0	0.0	4	28.6	0	0.0	7	50.0	0
	2014 - 15	16	0	0.0	0	0.0	1	6.3	1	6.3	1	6.3	0	0.0	8	50.0	0	0.0	6	37.5	0
	2015 - 16	13	0	0.0	0	0.0	0	0.0	0	0.0	1	7.7	0	0.0	5	38.5	0	0.0	7	53.8	0
	2016 - 17	6	0	0.0	0	0.0	0	0.0	0	0.0	0	0.0	0	0.0	4	66.7	0	0.0	2	33.3	0
Doctorate	2012 - 13	9	0	0.0	0	0.0	0	0.0	0	0.0	1	11.1	0	0.0	6	66.7	0	0.0	2	22.2	0
	2013 - 14	5	0	0.0	0	0.0	0	0.0	0	0.0	0	0.0	0	0.0	2	40.0	0	0.0	3	60.0	0
	2014 - 15	9	0	0.0	0	0.0	0	0.0	0	0.0	1	11.1	0	0.0	5	55.6	0	0.0	3	33.3	0
	2015 - 16	7	0	0.0	0	0.0	0	0.0	0	0.0	1	14.3	0	0.0	1	14.3	1	14.3	3	42.9	1
	2016 - 17	8	0	0.0	0	0.0	0	0.0	0	0.0	2	25.0	0	0.0	3	37.5	0	0.0	3	37.5	0
Non-Degree & Campus Certificate	2012 - 13	0	0	0.0	0	0.0	0	0.0	0	0.0	0	0.0	0	0.0	0	0.0	0	0.0	0	0.0	0
	2013 - 14	0	0	0.0	0	0.0	0	0.0	0	0.0	0	0.0	0	0.0	0	0.0	0	0.0	0	0.0	0
	2014 - 15	0	0	0.0	0	0.0	0	0.0	0	0.0	0	0.0	0	0.0	0	0.0	0	0.0	0	0.0	0
	2015 - 16	0	0	0.0	0	0.0	0	0.0	0	0.0	0	0.0	0	0.0	0	0.0	0	0.0	0	0.0	0
	2016 - 17	0	0	0.0	0	0.0	0	0.0	0	0.0	0	0.0	0	0.0	0	0.0	0	0.0	0	0.0	0

**Note:** Each row represents a fiscal year, beginning with Summer term and ending with Spring.

# Degrees Conferred by Race/Ethnicity

Economics

Fall 2013 - Fall 2017



**Notes:** 1) URM stands for Under-Represented Minority and includes American Indian or Alaska Native; Black or African-American; Hispanic / Latino race/ethnicity groups

2) Individual URM groups, Native Hawaiian Pacific Islander, Two or More Races, and Other race/ethnicity categories left off this charts due to relatively low numbers

**Degrees Conferred**  
**by Gender**

Economics

Fall 2013 - Fall 2017

		Total	Male		Female		Not Reported
			Count	%	Count	%	
All	2012 - 13	22	14	63.6	8	36.4	0
	2013 - 14	19	7	36.8	12	63.2	0
	2014 - 15	25	14	56.0	11	44.0	0
	2015 - 16	20	11	55.0	9	45.0	0
	2016 - 17	14	8	57.1	6	42.9	0
Masters & IBHE Certificate	2012 - 13	13	9	69.2	4	30.8	0
	2013 - 14	14	6	42.9	8	57.1	0
	2014 - 15	16	11	68.8	5	31.3	0
	2015 - 16	13	6	46.2	7	53.8	0
	2016 - 17	6	3	50.0	3	50.0	0
Doctorate	2012 - 13	9	5	55.6	4	44.4	0
	2013 - 14	5	1	20.0	4	80.0	0
	2014 - 15	9	3	33.3	6	66.7	0
	2015 - 16	7	5	71.4	2	28.6	0
	2016 - 17	8	5	62.5	3	37.5	0
Campus Certificates	2012 - 13	0	0	0.0	0	0.0	0
	2013 - 14	0	0	0.0	0	0.0	0
	2014 - 15	0	0	0.0	0	0.0	0
	2015 - 16	0	0	0.0	0	0.0	0
	2016 - 17	0	0	0.0	0	0.0	0

**Note:** Each row represents a fiscal year, beginning with Summer term and ending with Spring.

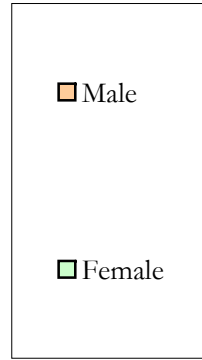
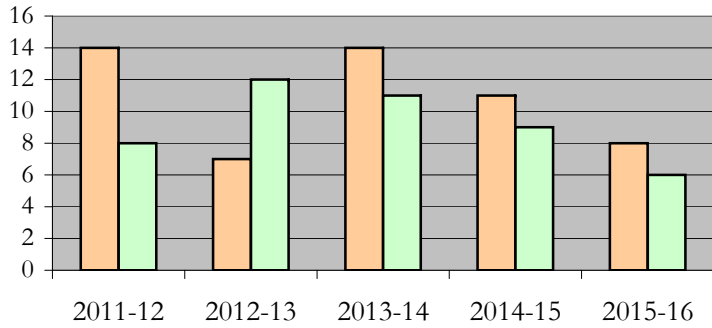


# Degrees Conferred by Gender

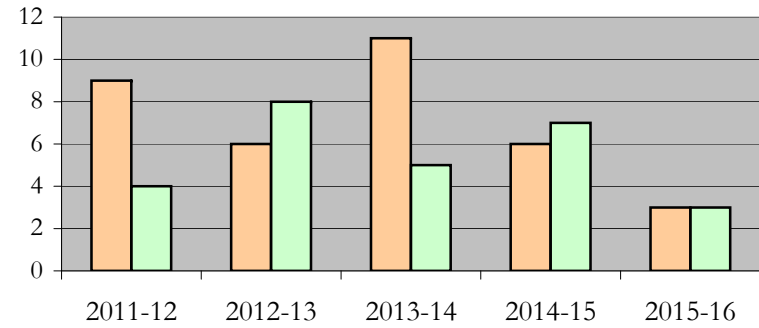
Economics

Fall 2013 - Fall 2017

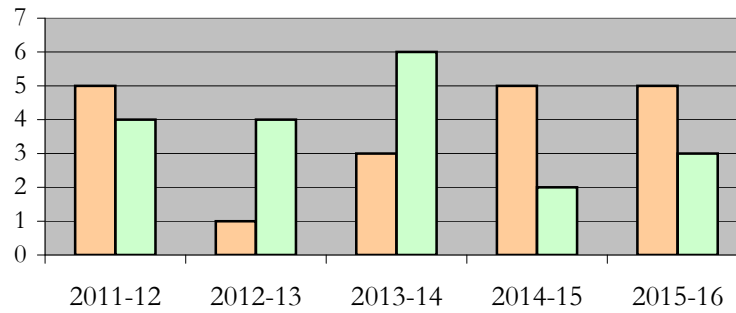
### All Students



### Masters & IBHE Certificate Students



### Doctorate Students



## **Appendix A**

Economics

Fall 2013 - Fall 2017

### **List of program codes included in this document**

20FS0074PHD

20FS0074MA

**Notes:** 1) Program codes are sorted by alphabetical order in column-wise fashion

2) Program codes highlighted in yellow did not have applications, enrollment, nor degrees conferred in the covered period