

Matriculation

Diversity Pipeline

Earth and Environmental Sciences

Fall 2013 - Fall 2017

	Fall Semester Year	Applied					Admitted					Non-URM Admitted to Applied Yield %	URM Admitted to Applied Yield %	New Enrollment					Non-URM Enrolled to Admitted Yield %	URM Enrolled to Admitted Yield %	Total Enrollment				
		Grand Total	Non-URM Total		URM Total		Grand Total	Non-URM Total		URM Total				Grand Total	Non-URM Total		URM Total				Grand Total	Non-URM Total		URM Total	
			Count	%	Count	%		Count	%	Count	%				Count	%	Count	%				Count	%	Count	%
All	2013	47	47	100.0%	0	0.0%	6	6	100.0%	0	0.0%	12.8%	0.0%	3	3	100.0%	0	0.0%	50.0%	0.0%	21	21	100.0%	0	0.0%
	2014	29	27	93.1%	2	6.9%	7	7	100.0%	0	0.0%	25.9%	0.0%	3	3	100.0%	0	0.0%	42.9%	0.0%	22	21	95.5%	1	4.5%
	2015	24	23	95.8%	1	4.2%	4	4	100.0%	0	0.0%	17.4%	0.0%	3	3	100.0%	0	0.0%	75.0%	0.0%	19	18	94.7%	1	5.3%
	2016	28	27	96.4%	1	3.6%	3	2	66.7%	1	33.3%	7.4%	100.0%	1	1	100.0%	0	0.0%	50.0%	0.0%	15	15	100.0%	0	0.0%
	2017	22	20	90.9%	2	9.1%	7	6	85.7%	1	14.3%	30.0%	50.0%	4	3	75.0%	1	25.0%	50.0%	100.0%	14	13	92.9%	1	7.1%
	Average	30	29	96.0%	1	4.0%	5	5	92.6%	0	7.4%	17.4%	33.3%	3	3	92.9%	0	7.1%	52.0%	50.0%	18	18	96.7%	1	3.3%
Masters & IBHE Certificate	2013	33	33	100.0%	0	0.0%	4	4	100.0%	0	0.0%	12.1%	0.0%	2	2	100.0%	0	0.0%	50.0%	0.0%	10	10	100.0%	0	0.0%
	2014	17	16	94.1%	1	5.9%	3	3	100.0%	0	0.0%	18.8%	0.0%	1	1	100.0%	0	0.0%	33.3%	0.0%	12	11	91.7%	1	8.3%
	2015	13	12	92.3%	1	7.7%	1	1	100.0%	0	0.0%	8.3%	0.0%	1	1	100.0%	0	0.0%	100.0%	0.0%	8	7	87.5%	1	12.5%
	2016	15	14	93.3%	1	6.7%	1	0	0.0%	1	100.0%	0.0%	100.0%	0	0	0.0%	0	0.0%	0.0%	0.0%	4	4	100.0%	0	0.0%
	2017	11	9	81.8%	2	18.2%	3	2	66.7%	1	33.3%	22.2%	50.0%	2	1	50.0%	1	50.0%	50.0%	100.0%	2	1	50.0%	1	50.0%
	Average	18	17	94.4%	1	5.6%	2	2	83.3%	0	16.7%	11.9%	40.0%	1	1	83.3%	0	16.7%	50.0%	50.0%	7	7	91.7%	1	8.3%
Doctorate	2013	14	14	100.0%	0	0.0%	2	2	100.0%	0	0.0%	14.3%	0.0%	1	1	100.0%	0	0.0%	50.0%	0.0%	11	11	100.0%	0	0.0%
	2014	12	11	91.7%	1	8.3%	4	4	100.0%	0	0.0%	36.4%	0.0%	2	2	100.0%	0	0.0%	50.0%	0.0%	10	10	100.0%	0	0.0%
	2015	11	11	100.0%	0	0.0%	3	3	100.0%	0	0.0%	27.3%	0.0%	2	2	100.0%	0	0.0%	66.7%	0.0%	11	11	100.0%	0	0.0%
	2016	13	13	100.0%	0	0.0%	2	2	100.0%	0	0.0%	15.4%	0.0%	1	1	100.0%	0	0.0%	50.0%	0.0%	11	11	100.0%	0	0.0%
	2017	11	11	100.0%	0	0.0%	4	4	100.0%	0	0.0%	36.4%	0.0%	2	2	100.0%	0	0.0%	50.0%	0.0%	12	12	100.0%	0	0.0%
	Average	12	12	98.4%	0	1.6%	3	3	100.0%	0	0.0%	25.0%	0.0%	2	2	100.0%	0	0.0%	53.3%	0.0%	11	11	100.0%	0	0.0%
Non-Degree & Campus Certificate	2013	0	0	0.0%	0	0.0%	0	0	0.0%	0	0.0%	0.0%	0.0%	0	0	0.0%	0	0.0%	0.0%	0.0%	0	0	0.0%	0	0.0%
	2014	0	0	0.0%	0	0.0%	0	0	0.0%	0	0.0%	0.0%	0.0%	0	0	0.0%	0	0.0%	0.0%	0.0%	0	0	0.0%	0	0.0%
	2015	0	0	0.0%	0	0.0%	0	0	0.0%	0	0.0%	0.0%	0.0%	0	0	0.0%	0	0.0%	0.0%	0.0%	0	0	0.0%	0	0.0%
	2016	0	0	0.0%	0	0.0%	0	0	0.0%	0	0.0%	0.0%	0.0%	0	0	0.0%	0	0.0%	0.0%	0.0%	0	0	0.0%	0	0.0%
	2017	0	0	0.0%	0	0.0%	0	0	0.0%	0	0.0%	0.0%	0.0%	0	0	0.0%	0	0.0%	0.0%	0.0%	0	0	0.0%	0	0.0%
	Average	0	0	0.0%	0	0.0%	0	0	0.0%	0	0.0%	0.0%	0.0%	0	0	0.0%	0	0.0%	0.0%	0.0%	0	0	0.0%	0	0.0%

Note: URM stands for Under-Represented Minority and includes American Indian or Alaska Native; Black or African-American; Hispanic / Latino race/ethnicity groups

Applications - Total

by Race/Ethnicity

Earth and Environmental Sciences

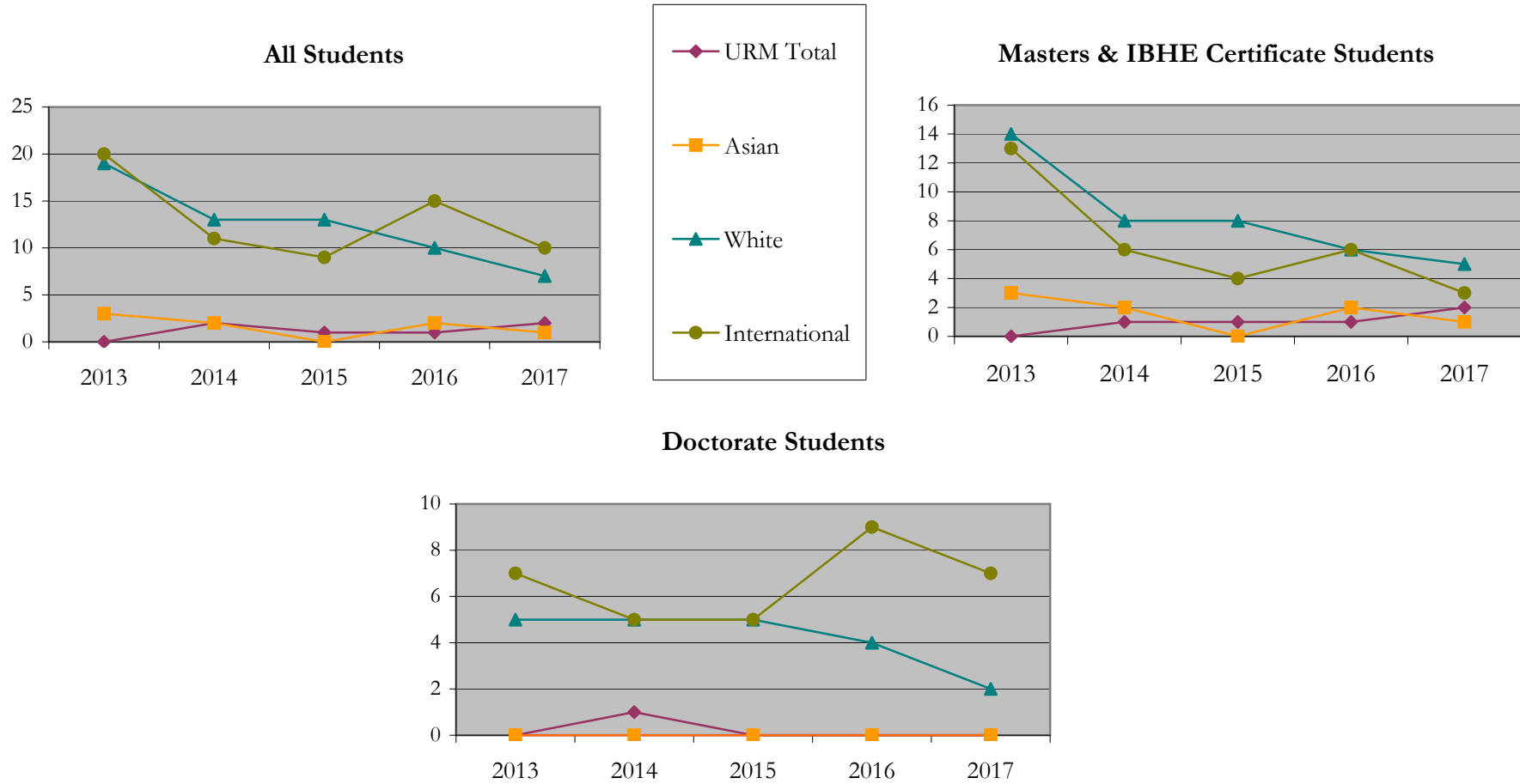
Fall 2013 - Fall 2017

		Total	Under Represented Minorities (URM)																		
			American Indian or Alaska Native		Black or African American		Hispanic / Latino		URM Total		Asian		Native Hawaiian or Pacific Islander		White		Two or More Races		International		Not Reported
			Count	%	Count	%	Count	%	Count	%	Count	%	Count	%	Count	%	Count	%	Count	%	Count
All	2013	47	0	0.0	0	0.0	0	0.0	0	0.0	3	6.4	0	0.0	19	40.4	1	2.1	20	42.6	4
	2014	29	0	0.0	0	0.0	2	6.9	2	6.9	2	6.9	0	0.0	13	44.8	0	0.0	11	37.9	1
	2015	24	0	0.0	0	0.0	1	4.2	1	4.2	0	0.0	1	4.2	13	54.2	0	0.0	9	37.5	0
	2016	28	0	0.0	0	0.0	1	3.6	1	3.6	2	7.1	0	0.0	10	35.7	0	0.0	15	53.6	0
	2017	22	0	0.0	0	0.0	2	9.1	2	9.1	1	4.5	0	0.0	7	31.8	1	4.5	10	45.5	1
Masters & IBHE Certificate	2013	33	0	0.0	0	0.0	0	0.0	0	0.0	3	9.1	0	0.0	14	42.4	0	0.0	13	39.4	3
	2014	17	0	0.0	0	0.0	1	5.9	1	5.9	2	11.8	0	0.0	8	47.1	0	0.0	6	35.3	0
	2015	13	0	0.0	0	0.0	1	7.7	1	7.7	0	0.0	0	0.0	8	61.5	0	0.0	4	30.8	0
	2016	15	0	0.0	0	0.0	1	6.7	1	6.7	2	13.3	0	0.0	6	40.0	0	0.0	6	40.0	0
	2017	11	0	0.0	0	0.0	2	18.2	2	18.2	1	9.1	0	0.0	5	45.5	0	0.0	3	27.3	0
Doctorate	2013	14	0	0.0	0	0.0	0	0.0	0	0.0	0	0.0	0	0.0	5	35.7	1	7.1	7	50.0	1
	2014	12	0	0.0	0	0.0	1	8.3	1	8.3	0	0.0	0	0.0	5	41.7	0	0.0	5	41.7	1
	2015	11	0	0.0	0	0.0	0	0.0	0	0.0	0	0.0	1	9.1	5	45.5	0	0.0	5	45.5	0
	2016	13	0	0.0	0	0.0	0	0.0	0	0.0	0	0.0	0	0.0	4	30.8	0	0.0	9	69.2	0
	2017	11	0	0.0	0	0.0	0	0.0	0	0.0	0	0.0	0	0.0	2	18.2	1	9.1	7	63.6	1
Non-Degree & Campus Certificate	2013	0	0	0.0	0	0.0	0	0.0	0	0.0	0	0.0	0	0.0	0	0.0	0	0.0	0	0.0	0
	2014	0	0	0.0	0	0.0	0	0.0	0	0.0	0	0.0	0	0.0	0	0.0	0	0.0	0	0.0	0
	2015	0	0	0.0	0	0.0	0	0.0	0	0.0	0	0.0	0	0.0	0	0.0	0	0.0	0	0.0	0
	2016	0	0	0.0	0	0.0	0	0.0	0	0.0	0	0.0	0	0.0	0	0.0	0	0.0	0	0.0	0
	2017	0	0	0.0	0	0.0	0	0.0	0	0.0	0	0.0	0	0.0	0	0.0	0	0.0	0	0.0	0

Note: URM stands for Under-Represented Minority and includes American Indian or Alaska Native; Black or African-American; Hispanic / Latino race/ethnicity groups

Applications - Total by Race/Ethnicity

Earth and Environmental Sciences
Fall 2013 - Fall 2017



Notes: 1) URM stands for Under-Represented Minority and includes American Indian or Alaska Native; Black or African-American; Hispanic / Latino race/ethnicity groups
2) Individual URM groups, Native Hawaiian Pacific Islander, Two or More Races, and Other race/ethnicity categories left off this charts due to relatively low numbers

Applications - Admitted

by Race/Ethnicity

Earth and Environmental Sciences

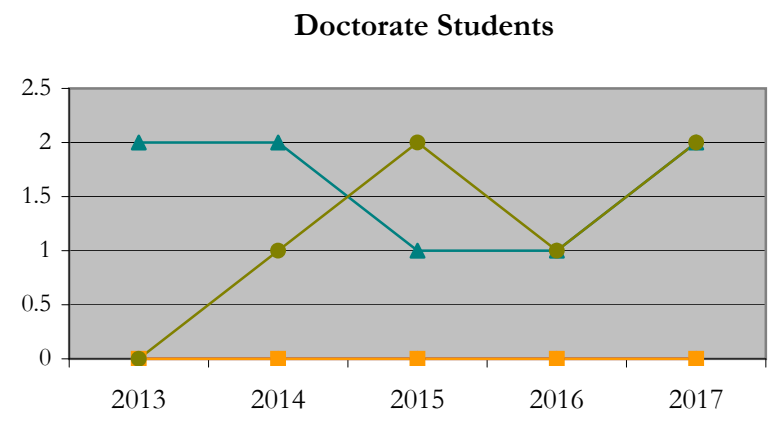
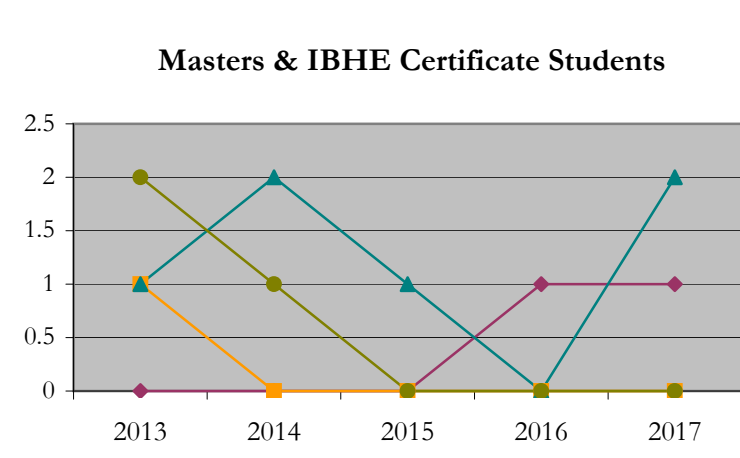
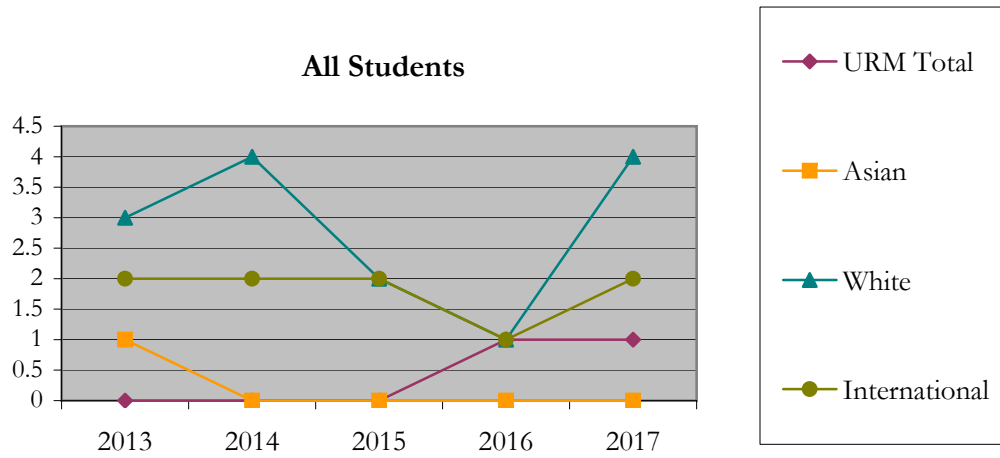
Fall 2013 - Fall 2017

		Total	Under Represented Minorities (URM)								Asian		Native Hawaiian or Pacific Islander		White		Two or More Races		International		Not Reported
			American Indian or Alaska Native		Black or African American		Hispanic / Latino		URM Total												
			Count	%	Count	%	Count	%	Count	%											
All	2013	6	0	0.0	0	0.0	0	0.0	0	0.0	1	16.7	0	0.0	3	50.0	0	0.0	2	33.3	0
	2014	7	0	0.0	0	0.0	0	0.0	0	0.0	0	0.0	0	0.0	4	57.1	0	0.0	2	28.6	1
	2015	4	0	0.0	0	0.0	0	0.0	0	0.0	0	0.0	0	0.0	2	50.0	0	0.0	2	50.0	0
	2016	3	0	0.0	0	0.0	1	33.3	1	33.3	0	0.0	0	0.0	1	33.3	0	0.0	1	33.3	0
	2017	7	0	0.0	0	0.0	1	14.3	1	14.3	0	0.0	0	0.0	4	57.1	0	0.0	2	28.6	0
Masters & IBHE Certificate	2013	4	0	0.0	0	0.0	0	0.0	0	0.0	1	25.0	0	0.0	1	25.0	0	0.0	2	50.0	0
	2014	3	0	0.0	0	0.0	0	0.0	0	0.0	0	0.0	0	0.0	2	66.7	0	0.0	1	33.3	0
	2015	1	0	0.0	0	0.0	0	0.0	0	0.0	0	0.0	0	0.0	1	100.0	0	0.0	0	0.0	0
	2016	1	0	0.0	0	0.0	1	100.0	1	100.0	0	0.0	0	0.0	0	0.0	0	0.0	0	0.0	0
	2017	3	0	0.0	0	0.0	1	33.3	1	33.3	0	0.0	0	0.0	2	66.7	0	0.0	0	0.0	0
Doctorate	2013	2	0	0.0	0	0.0	0	0.0	0	0.0	0	0.0	0	0.0	2	100.0	0	0.0	0	0.0	0
	2014	4	0	0.0	0	0.0	0	0.0	0	0.0	0	0.0	0	0.0	2	50.0	0	0.0	1	25.0	1
	2015	3	0	0.0	0	0.0	0	0.0	0	0.0	0	0.0	0	0.0	1	33.3	0	0.0	2	66.7	0
	2016	2	0	0.0	0	0.0	0	0.0	0	0.0	0	0.0	0	0.0	1	50.0	0	0.0	1	50.0	0
	2017	4	0	0.0	0	0.0	0	0.0	0	0.0	0	0.0	0	0.0	2	50.0	0	0.0	2	50.0	0
Non-Degree & Campus Certificate	2013	0	0	0.0	0	0.0	0	0.0	0	0.0	0	0.0	0	0.0	0	0.0	0	0.0	0	0.0	0
	2014	0	0	0.0	0	0.0	0	0.0	0	0.0	0	0.0	0	0.0	0	0.0	0	0.0	0	0.0	0
	2015	0	0	0.0	0	0.0	0	0.0	0	0.0	0	0.0	0	0.0	0	0.0	0	0.0	0	0.0	0
	2016	0	0	0.0	0	0.0	0	0.0	0	0.0	0	0.0	0	0.0	0	0.0	0	0.0	0	0.0	0
	2017	0	0	0.0	0	0.0	0	0.0	0	0.0	0	0.0	0	0.0	0	0.0	0	0.0	0	0.0	0

Note: URM stands for Under-Represented Minority and includes American Indian or Alaska Native; Black or African-American; Hispanic / Latino race/ethnicity groups

Applications - Admitted by Race/Ethnicity

Earth and Environmental Sciences
Fall 2013 - Fall 2017



Notes: 1) URM stands for Under-Represented Minority and includes American Indian or Alaska Native; Black or African-American; Hispanic / Latino race/ethnicity groups
 2) Individual URM groups, Native Hawaiian Pacific Islander, Two or More Races, and Other race/ethnicity categories left off this charts due to relatively low numbers

**Enrollment - New
by Race/Ethnicity**

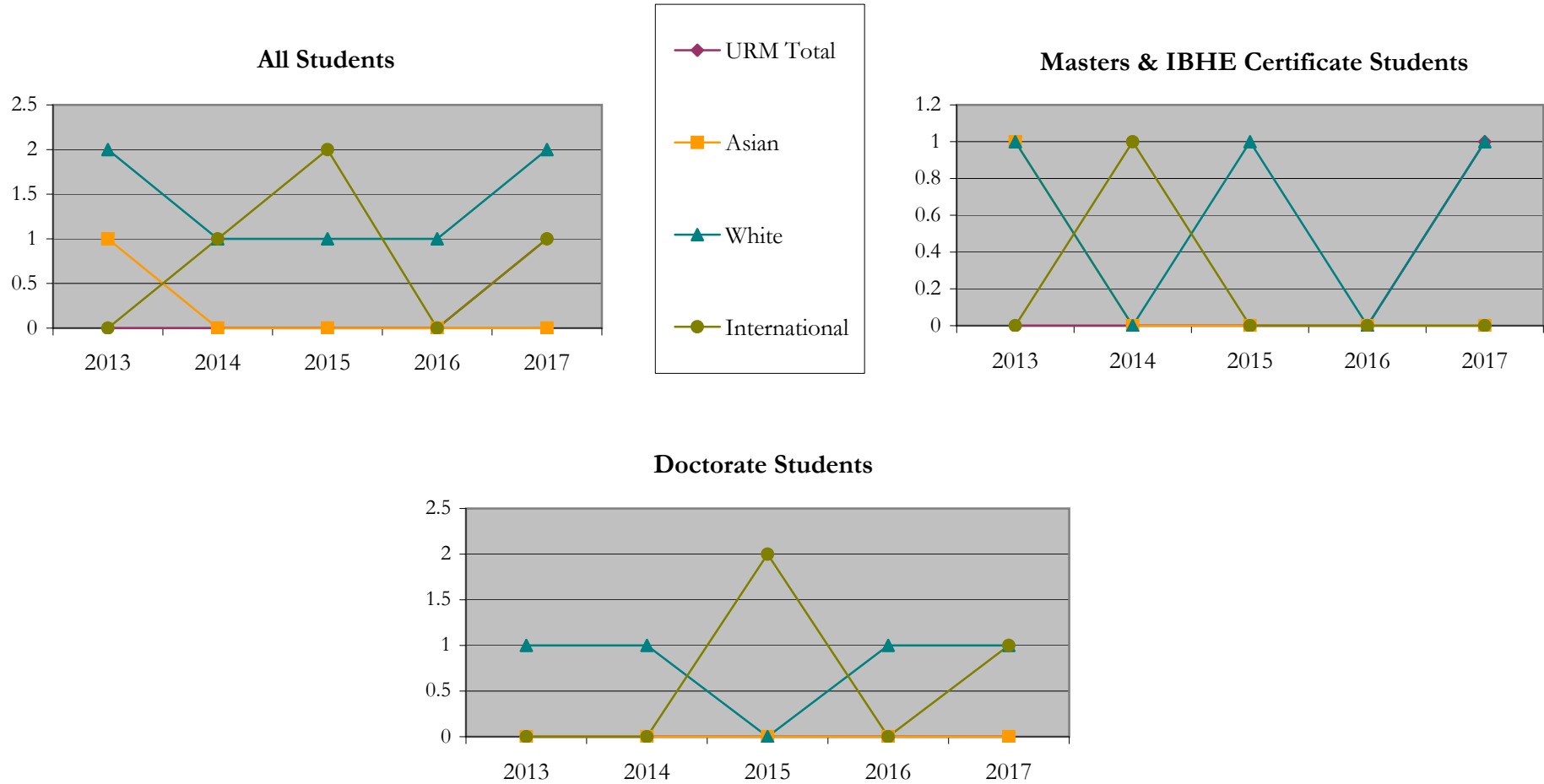
Earth and Environmental Sciences
Fall 2013 - Fall 2017

		Total	Under Represented Minorities (URM)								Asian		Native Hawaiian or Pacific Islander		White		Two or More Races		International		Not Reported
			American Indian or Alaska Native		Black or African American		Hispanic / Latino		URM Total												
			Count	%	Count	%	Count	%	Count	%											
All	2013	3	0	0.0	0	0.0	0	0.0	0	0.0	1	33.3	0	0.0	2	66.7	0	0.0	0	0.0	0
	2014	3	0	0.0	0	0.0	0	0.0	0	0.0	0	0.0	0	0.0	1	33.3	0	0.0	1	33.3	1
	2015	3	0	0.0	0	0.0	0	0.0	0	0.0	0	0.0	0	0.0	1	33.3	0	0.0	2	66.7	0
	2016	1	0	0.0	0	0.0	0	0.0	0	0.0	0	0.0	0	0.0	1	100.0	0	0.0	0	0.0	0
	2017	4	0	0.0	0	0.0	1	25.0	1	25.0	0	0.0	0	0.0	2	50.0	0	0.0	1	25.0	0
Masters & IBHE Certificate	2013	2	0	0.0	0	0.0	0	0.0	0	0.0	1	50.0	0	0.0	1	50.0	0	0.0	0	0.0	0
	2014	1	0	0.0	0	0.0	0	0.0	0	0.0	0	0.0	0	0.0	0	0.0	0	0.0	1	100.0	0
	2015	1	0	0.0	0	0.0	0	0.0	0	0.0	0	0.0	0	0.0	1	100.0	0	0.0	0	0.0	0
	2016	0	0	0.0	0	0.0	0	0.0	0	0.0	0	0.0	0	0.0	0	0.0	0	0.0	0	0.0	0
	2017	2	0	0.0	0	0.0	1	50.0	1	50.0	0	0.0	0	0.0	1	50.0	0	0.0	0	0.0	0
Doctorate	2013	1	0	0.0	0	0.0	0	0.0	0	0.0	0	0.0	0	0.0	1	100.0	0	0.0	0	0.0	0
	2014	2	0	0.0	0	0.0	0	0.0	0	0.0	0	0.0	0	0.0	1	50.0	0	0.0	0	0.0	1
	2015	2	0	0.0	0	0.0	0	0.0	0	0.0	0	0.0	0	0.0	0	0.0	0	0.0	2	100.0	0
	2016	1	0	0.0	0	0.0	0	0.0	0	0.0	0	0.0	0	0.0	1	100.0	0	0.0	0	0.0	0
	2017	2	0	0.0	0	0.0	0	0.0	0	0.0	0	0.0	0	0.0	1	50.0	0	0.0	1	50.0	0
Non-Degree & Campus Certificate	2013	0	0	0.0	0	0.0	0	0.0	0	0.0	0	0.0	0	0.0	0	0.0	0	0.0	0	0.0	0
	2014	0	0	0.0	0	0.0	0	0.0	0	0.0	0	0.0	0	0.0	0	0.0	0	0.0	0	0.0	0
	2015	0	0	0.0	0	0.0	0	0.0	0	0.0	0	0.0	0	0.0	0	0.0	0	0.0	0	0.0	0
	2016	0	0	0.0	0	0.0	0	0.0	0	0.0	0	0.0	0	0.0	0	0.0	0	0.0	0	0.0	0
	2017	0	0	0.0	0	0.0	0	0.0	0	0.0	0	0.0	0	0.0	0	0.0	0	0.0	0	0.0	0

Note: URM stands for Under-Represented Minority and includes American Indian or Alaska Native; Black or African-American; Hispanic / Latino race/ethnicity groups

**Enrollment - New
by Race/Ethnicity**

Earth and Environmental Sciences
Fall 2013 - Fall 2017



Notes: 1) URM stands for Under-Represented Minority and includes American Indian or Alaska Native; Black or African-American; Hispanic / Latino race/ethnicity groups

2) Individual URM groups, Native Hawaiian Pacific Islander, Two or More Races, and Other race/ethnicity categories left off this charts due to relatively low numbers

Enrollment - Total by Race/Ethnicity

Earth and Environmental Sciences

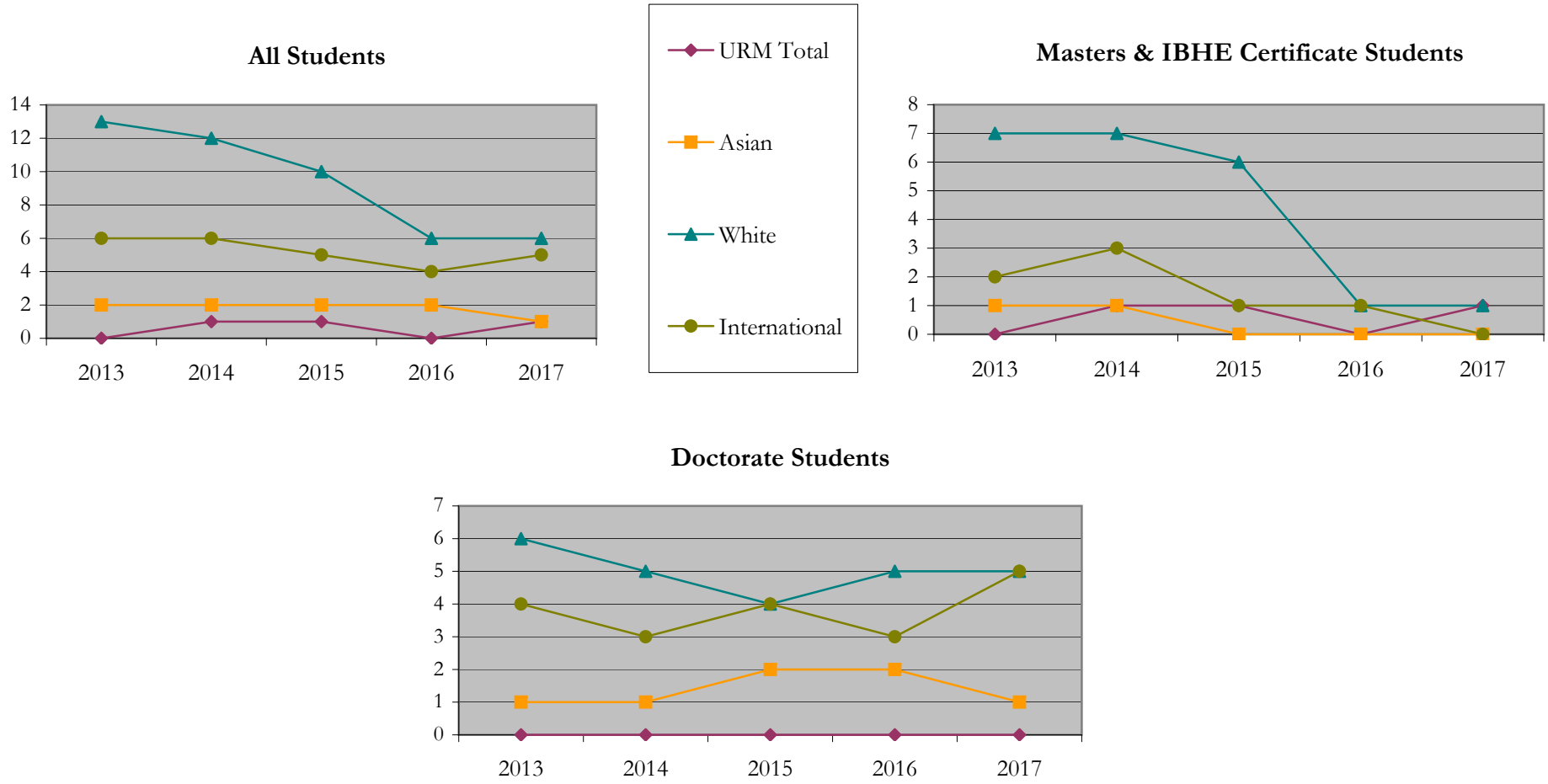
Fall 2013 - Fall 2017

		Total	Under Represented Minorities (URM)								Asian		Native Hawaiian or Pacific Islander		White		Two or More Races		International		Not Reported
			American Indian or Alaska Native		Black or African American		Hispanic / Latino		URM Total												
			Count	%	Count	%	Count	%	Count	%											
All	2013	21	0	0.0	0	0.0	0	0.0	0	0.0	2	9.5	0	0.0	13	61.9	0	0.0	6	28.6	0
	2014	22	0	0.0	0	0.0	1	4.5	1	4.5	2	9.1	0	0.0	12	54.5	0	0.0	6	27.3	1
	2015	19	0	0.0	0	0.0	1	5.3	1	5.3	2	10.5	0	0.0	10	52.6	0	0.0	5	26.3	1
	2016	15	0	0.0	0	0.0	0	0.0	0	0.0	2	13.3	0	0.0	6	40.0	0	0.0	4	26.7	3
	2017	14	0	0.0	0	0.0	1	7.1	1	7.1	1	7.1	0	0.0	6	42.9	0	0.0	5	35.7	1
Masters & IBHE Certificate	2013	10	0	0.0	0	0.0	0	0.0	0	0.0	1	10.0	0	0.0	7	70.0	0	0.0	2	20.0	0
	2014	12	0	0.0	0	0.0	1	8.3	1	8.3	1	8.3	0	0.0	7	58.3	0	0.0	3	25.0	0
	2015	8	0	0.0	0	0.0	1	12.5	1	12.5	0	0.0	0	0.0	6	75.0	0	0.0	1	12.5	0
	2016	4	0	0.0	0	0.0	0	0.0	0	0.0	0	0.0	0	0.0	1	25.0	0	0.0	1	25.0	2
	2017	2	0	0.0	0	0.0	1	50.0	1	50.0	0	0.0	0	0.0	1	50.0	0	0.0	0	0.0	0
Doctorate	2013	11	0	0.0	0	0.0	0	0.0	0	0.0	1	9.1	0	0.0	6	54.5	0	0.0	4	36.4	0
	2014	10	0	0.0	0	0.0	0	0.0	0	0.0	1	10.0	0	0.0	5	50.0	0	0.0	3	30.0	1
	2015	11	0	0.0	0	0.0	0	0.0	0	0.0	2	18.2	0	0.0	4	36.4	0	0.0	4	36.4	1
	2016	11	0	0.0	0	0.0	0	0.0	0	0.0	2	18.2	0	0.0	5	45.5	0	0.0	3	27.3	1
	2017	12	0	0.0	0	0.0	0	0.0	0	0.0	1	8.3	0	0.0	5	41.7	0	0.0	5	41.7	1
Non-Degree & Campus Certificate	2013	0	0	0.0	0	0.0	0	0.0	0	0.0	0	0.0	0	0.0	0	0.0	0	0.0	0	0.0	0
	2014	0	0	0.0	0	0.0	0	0.0	0	0.0	0	0.0	0	0.0	0	0.0	0	0.0	0	0.0	0
	2015	0	0	0.0	0	0.0	0	0.0	0	0.0	0	0.0	0	0.0	0	0.0	0	0.0	0	0.0	0
	2016	0	0	0.0	0	0.0	0	0.0	0	0.0	0	0.0	0	0.0	0	0.0	0	0.0	0	0.0	0
	2017	0	0	0.0	0	0.0	0	0.0	0	0.0	0	0.0	0	0.0	0	0.0	0	0.0	0	0.0	0

Note: URM stands for Under-Represented Minority and includes American Indian or Alaska Native; Black or African-American; Hispanic / Latino race/ethnicity groups

Enrollment - Total by Race/Ethnicity

Earth and Environmental Sciences
Fall 2013 - Fall 2017



Notes: 1) URM stands for Under-Represented Minority and includes American Indian or Alaska Native; Black or African-American; Hispanic / Latino race/ethnicity groups

2) Individual URM groups, Native Hawaiian Pacific Islander, Two or More Races, and Other race/ethnicity categories left off this charts due to relatively low numbers

Enrollment

by Student Type, Enrollment Time, and Gender

Earth and Environmental Sciences

Fall 2013 - Fall 2017

		Total	New		Continuing		Male		Female		Gender Not Reported	Part-time		Full-time	
			Count	%	Count	%	Count	%	Count	%		Count	%	Count	%
All	2013	21	3	14.3	18	85.7	9	42.9	12	57.1	0	0	0.0	21	100.0
	2014	22	3	13.6	19	86.4	9	40.9	13	59.1	0	1	4.5	21	95.5
	2015	19	3	15.8	16	84.2	8	42.1	11	57.9	0	0	0.0	19	100.0
	2016	15	1	6.7	14	93.3	9	60.0	6	40.0	0	0	0.0	15	100.0
	2017	14	4	28.6	10	71.4	9	64.3	5	35.7	0	0	0.0	14	100.0
Masters & IBHE Certificate	2013	10	2	20.0	8	80.0	3	30.0	7	70.0	0	0	0.0	10	100.0
	2014	12	1	8.3	11	91.7	5	41.7	7	58.3	0	0	0.0	12	100.0
	2015	8	1	12.5	7	87.5	4	50.0	4	50.0	0	0	0.0	8	100.0
	2016	4	0	0.0	4	100.0	3	75.0	1	25.0	0	0	0.0	4	100.0
	2017	2	2	100.0	0	0.0	1	50.0	1	50.0	0	0	0.0	2	100.0
Doctorate	2013	11	1	9.1	10	90.9	6	54.5	5	45.5	0	0	0.0	11	100.0
	2014	10	2	20.0	8	80.0	4	40.0	6	60.0	0	1	10.0	9	90.0
	2015	11	2	18.2	9	81.8	4	36.4	7	63.6	0	0	0.0	11	100.0
	2016	11	1	9.1	10	90.9	6	54.5	5	45.5	0	0	0.0	11	100.0
	2017	12	2	16.7	10	83.3	8	66.7	4	33.3	0	0	0.0	12	100.0
Non-Degree & Campus Certificate	2013	0	0	0.0	0	0.0	0	0.0	0	0.0	0	0	0.0	0	0.0
	2014	0	0	0.0	0	0.0	0	0.0	0	0.0	0	0	0.0	0	0.0
	2015	0	0	0.0	0	0.0	0	0.0	0	0.0	0	0	0.0	0	0.0
	2016	0	0	0.0	0	0.0	0	0.0	0	0.0	0	0	0.0	0	0.0
	2017	0	0	0.0	0	0.0	0	0.0	0	0.0	0	0	0.0	0	0.0

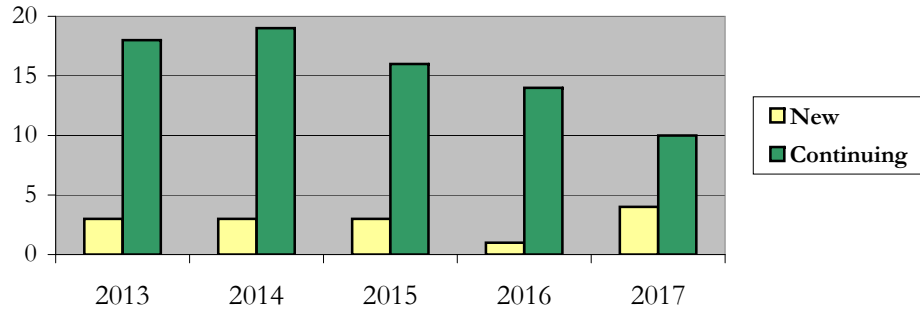
Enrollment

by Student Type, Enrollment Time, and Gender (All Students)

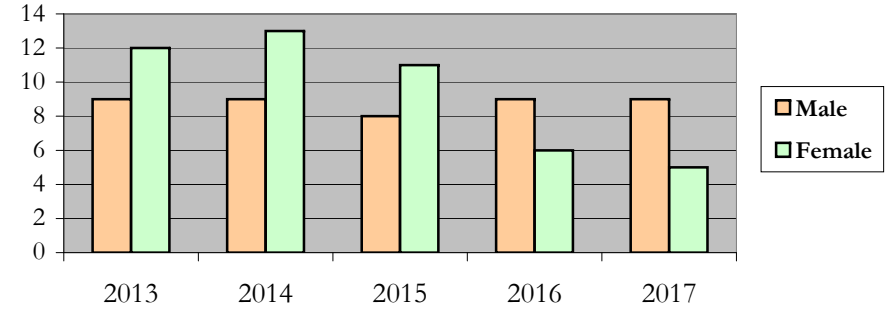
Earth and Environmental Sciences

Fall 2013 - Fall 2017

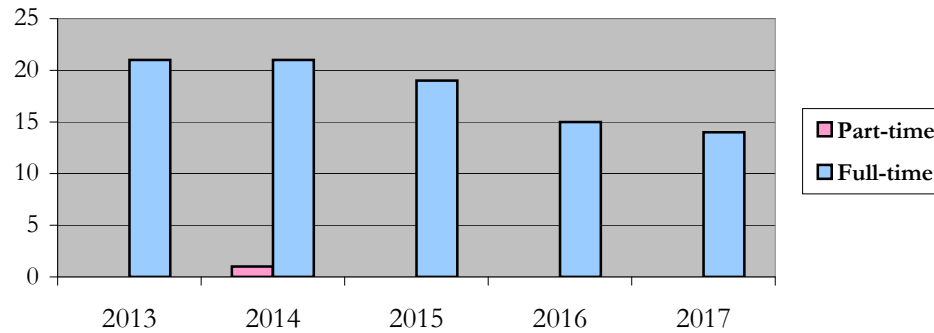
New and Continuing Enrollment



Enrollment by Gender



Enrollment by Student Enrollment Time

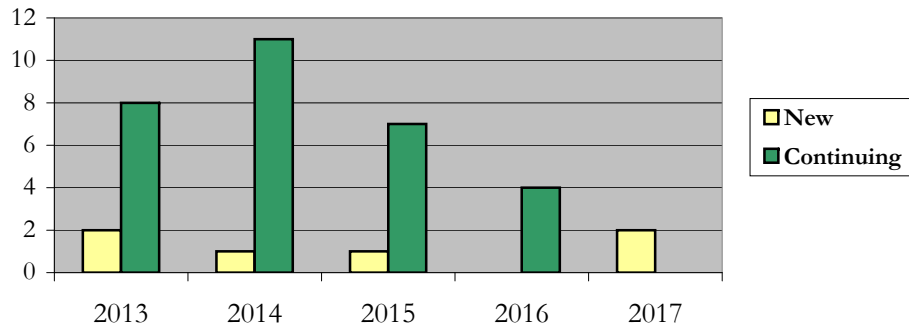


Enrollment by Student Type, Enrollment Time, and Gender (Master's Students)

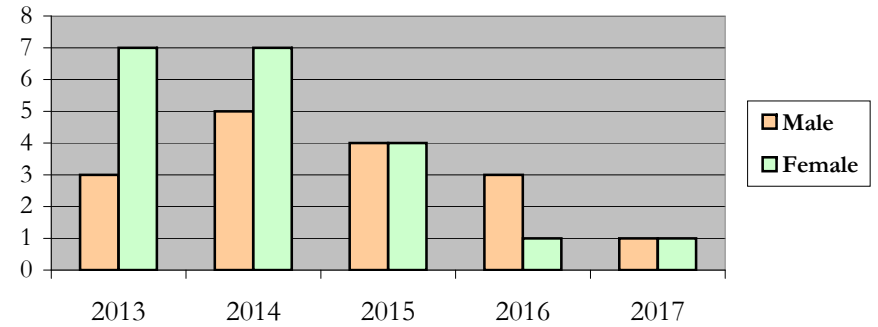
Earth and Environmental Sciences

Fall 2013 - Fall 2017

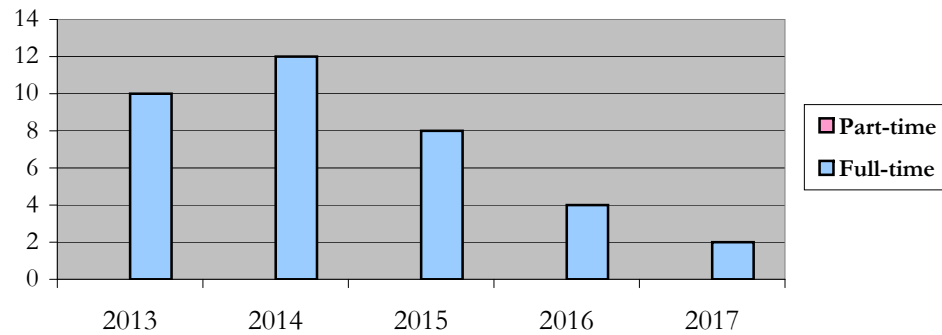
New and Continuing Enrollment



Enrollment by Gender



Enrollment by Student Enrollment Time



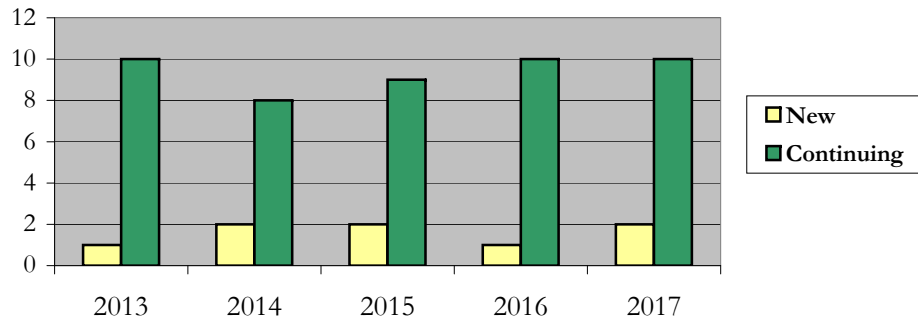
Enrollment

by Student Type, Enrollment Time, and Gender (Doctorate Students)

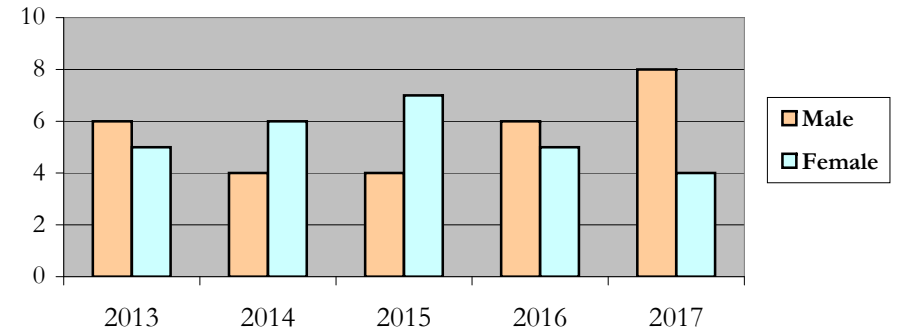
Earth and Environmental Sciences

Fall 2013 - Fall 2017

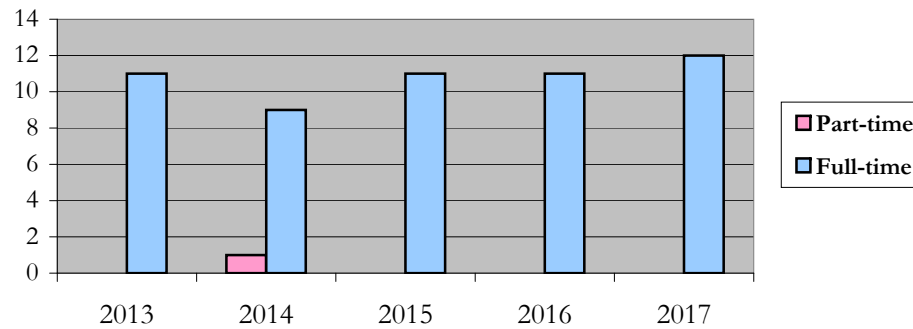
New and Continuing Enrollment



Enrollment by Gender



Enrollment by Student Enrollment Time



Degrees Conferred by Race/Ethnicity

Earth and Environmental Sciences

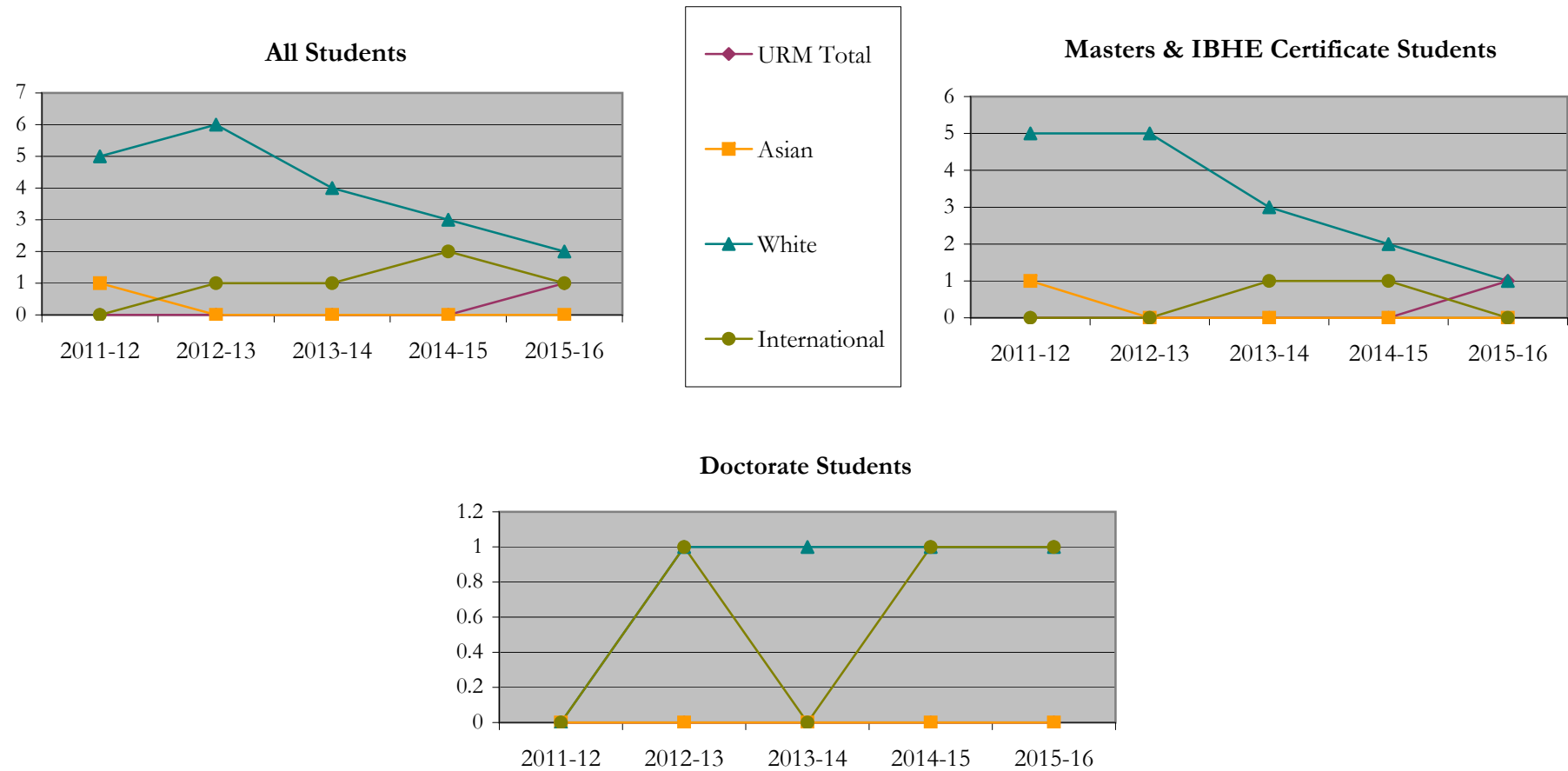
Fall 2013 - Fall 2017

		Total	Under Represented Minorities (URM)								Asian	Native Hawaiian or Pacific Islander	White	Two or More Races	International	Not Reported					
			American Indian or Alaska Native		Black or African American		Hispanic / Latino		URM Total												
			Count	%	Count	%	Count	%	Count	%							Count	%	Count	%	Count
All	2012 - 13	6	0	0.0	0	0.0	0	0.0	0	0.0	1	16.7	0	0.0	5	83.3	0	0.0	0	0.0	0
	2013 - 14	7	0	0.0	0	0.0	0	0.0	0	0.0	0	0.0	0	0.0	6	85.7	0	0.0	1	14.3	0
	2014 - 15	5	0	0.0	0	0.0	0	0.0	0	0.0	0	0.0	0	0.0	4	80.0	0	0.0	1	20.0	0
	2015 - 16	5	0	0.0	0	0.0	0	0.0	0	0.0	0	0.0	0	0.0	3	60.0	0	0.0	2	40.0	0
	2016 - 17	5	0	0.0	0	0.0	1	20.0	1	20.0	0	0.0	0	0.0	2	40.0	0	0.0	1	20.0	1
Masters & IBHE Certificate	2012 - 13	6	0	0.0	0	0.0	0	0.0	0	0.0	1	16.7	0	0.0	5	83.3	0	0.0	0	0.0	0
	2013 - 14	5	0	0.0	0	0.0	0	0.0	0	0.0	0	0.0	0	0.0	5	100.0	0	0.0	0	0.0	0
	2014 - 15	4	0	0.0	0	0.0	0	0.0	0	0.0	0	0.0	0	0.0	3	75.0	0	0.0	1	25.0	0
	2015 - 16	3	0	0.0	0	0.0	0	0.0	0	0.0	0	0.0	0	0.0	2	66.7	0	0.0	1	33.3	0
	2016 - 17	3	0	0.0	0	0.0	1	33.3	1	33.3	0	0.0	0	0.0	1	33.3	0	0.0	0	0.0	1
Doctorate	2012 - 13	0	0	0.0	0	0.0	0	0.0	0	0.0	0	0.0	0	0.0	0	0.0	0	0.0	0	0.0	0
	2013 - 14	2	0	0.0	0	0.0	0	0.0	0	0.0	0	0.0	0	0.0	1	50.0	0	0.0	1	50.0	0
	2014 - 15	1	0	0.0	0	0.0	0	0.0	0	0.0	0	0.0	0	0.0	1	100.0	0	0.0	0	0.0	0
	2015 - 16	2	0	0.0	0	0.0	0	0.0	0	0.0	0	0.0	0	0.0	1	50.0	0	0.0	1	50.0	0
	2016 - 17	2	0	0.0	0	0.0	0	0.0	0	0.0	0	0.0	0	0.0	1	50.0	0	0.0	1	50.0	0
Non-Degree & Campus Certificate	2012 - 13	0	0	0.0	0	0.0	0	0.0	0	0.0	0	0.0	0	0.0	0	0.0	0	0.0	0	0.0	0
	2013 - 14	0	0	0.0	0	0.0	0	0.0	0	0.0	0	0.0	0	0.0	0	0.0	0	0.0	0	0.0	0
	2014 - 15	0	0	0.0	0	0.0	0	0.0	0	0.0	0	0.0	0	0.0	0	0.0	0	0.0	0	0.0	0
	2015 - 16	0	0	0.0	0	0.0	0	0.0	0	0.0	0	0.0	0	0.0	0	0.0	0	0.0	0	0.0	0
	2016 - 17	0	0	0.0	0	0.0	0	0.0	0	0.0	0	0.0	0	0.0	0	0.0	0	0.0	0	0.0	0

Note: Each row represents a fiscal year, beginning with Summer term and ending with Spring.

Degrees Conferred by Race/Ethnicity

Earth and Environmental Sciences
Fall 2013 - Fall 2017



Notes: 1) URM stands for Under-Represented Minority and includes American Indian or Alaska Native; Black or African-American; Hispanic / Latino race/ethnicity groups

2) Individual URM groups, Native Hawaiian Pacific Islander, Two or More Races, and Other race/ethnicity categories left off this charts due to relatively low numbers

Degrees Conferred
by Gender

Earth and Environmental Sciences
 Fall 2013 - Fall 2017

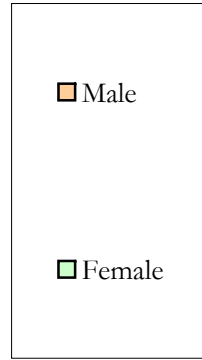
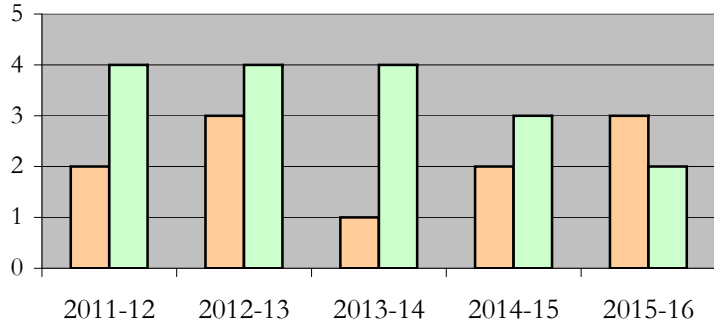
		Total	Male		Female		Not Reported
			Count	%	Count	%	
All	2012 - 13	6	2	33.3	4	66.7	0
	2013 - 14	7	3	42.9	4	57.1	0
	2014 - 15	5	1	20.0	4	80.0	0
	2015 - 16	5	2	40.0	3	60.0	0
	2016 - 17	5	3	60.0	2	40.0	0
Masters & IBHE Certificate	2012 - 13	6	2	33.3	4	66.7	0
	2013 - 14	5	1	20.0	4	80.0	0
	2014 - 15	4	1	25.0	3	75.0	0
	2015 - 16	3	1	33.3	2	66.7	0
	2016 - 17	3	3	100.0	0	0.0	0
Doctorate	2012 - 13	0	0	0.0	0	0.0	0
	2013 - 14	2	2	100.0	0	0.0	0
	2014 - 15	1	0	0.0	1	100.0	0
	2015 - 16	2	1	50.0	1	50.0	0
	2016 - 17	2	0	0.0	2	100.0	0
Campus Certificates	2012 - 13	0	0	0.0	0	0.0	0
	2013 - 14	0	0	0.0	0	0.0	0
	2014 - 15	0	0	0.0	0	0.0	0
	2015 - 16	0	0	0.0	0	0.0	0
	2016 - 17	0	0	0.0	0	0.0	0

Note: Each row represents a fiscal year, beginning with Summer term and ending with Spring.

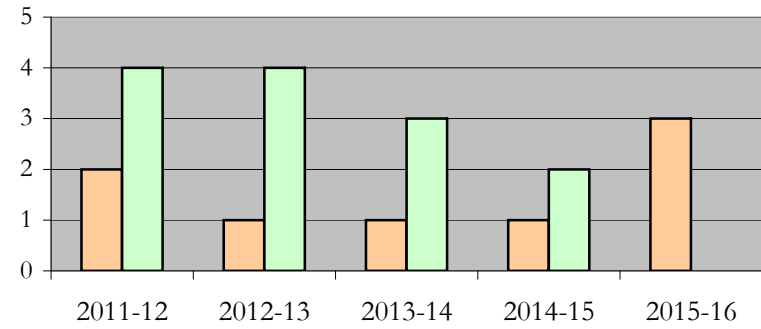
Degrees Conferred by Gender

Earth and Environmental Sciences
Fall 2013 - Fall 2017

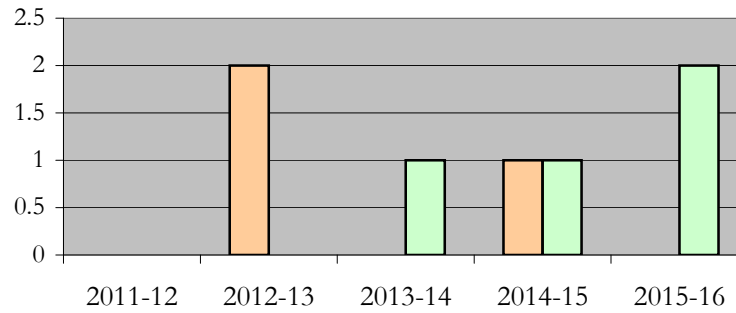
All Students



Masters & IBHE Certificate Students



Doctorate Students



Appendix A

Earth and Environmental Sciences

Fall 2013 - Fall 2017

List of program codes included in this document

20FS1174PHD

20FS1174MS

Notes: 1) Program codes are sorted by alphabetical order in column-wise fashion

2) Program codes highlighted in yellow did not have applications, enrollment, nor degrees conferred in the covered period