

Matriculation

Diversity Pipeline

Criminal Justice

Fall 2013 - Fall 2017

	Fall Semester Year	Applied					Admitted					Non-URM Admitted to Applied Yield %	URM Admitted to Applied Yield %	New Enrollment					Non-URM Enrolled to Admitted Yield %	URM Enrolled to Admitted Yield %	Total Enrollment				
		Grand Total	Non-URM Total		URM Total		Grand Total	Non-URM Total		URM Total				Grand Total	Non-URM Total		URM Total				Grand Total	Non-URM Total		URM Total	
			Count	%	Count	%		Count	%	Count	%				Count	%	Count	%				Count	%	Count	%
All	2013	91	65	71.4%	26	28.6%	33	23	69.7%	10	30.3%	35.4%	38.5%	9	4	44.4%	5	55.6%	17.4%	50.0%	59	37	62.7%	22	37.3%
	2014	84	64	76.2%	20	23.8%	28	20	71.4%	8	28.6%	31.3%	40.0%	16	12	75.0%	4	25.0%	60.0%	50.0%	62	40	64.5%	22	35.5%
	2015	74	60	81.1%	14	18.9%	27	21	77.8%	6	22.2%	35.0%	42.9%	9	6	66.7%	3	33.3%	28.6%	50.0%	64	42	65.6%	22	34.4%
	2016	52	36	69.2%	16	30.8%	19	16	84.2%	3	15.8%	44.4%	18.8%	6	5	83.3%	1	16.7%	31.3%	33.3%	54	34	63.0%	20	37.0%
	2017	65	47	72.3%	18	27.7%	27	20	74.1%	7	25.9%	42.6%	38.9%	8	4	50.0%	4	50.0%	20.0%	57.1%	50	30	60.0%	20	40.0%
Average	73	54	74.3%	19	25.7%	27	20	74.6%	7	25.4%	36.8%	36.2%	10	6	64.6%	3	35.4%	31.0%	50.0%	58	37	63.3%	21	36.7%	
Masters & IBHE Certificate	2013	38	24	63.2%	14	36.8%	22	14	63.6%	8	36.4%	58.3%	57.1%	5	1	20.0%	4	80.0%	7.1%	50.0%	21	11	52.4%	10	47.6%
	2014	47	33	70.2%	14	29.8%	22	16	72.7%	6	27.3%	48.5%	42.9%	10	8	80.0%	2	20.0%	50.0%	33.3%	18	11	61.1%	7	38.9%
	2015	37	28	75.7%	9	24.3%	23	18	78.3%	5	21.7%	64.3%	55.6%	7	5	71.4%	2	28.6%	27.8%	40.0%	20	15	75.0%	5	25.0%
	2016	30	19	63.3%	11	36.7%	17	14	82.4%	3	17.6%	73.7%	27.3%	5	4	80.0%	1	20.0%	28.6%	33.3%	15	11	73.3%	4	26.7%
	2017	36	26	72.2%	10	27.8%	20	15	75.0%	5	25.0%	57.7%	50.0%	5	1	20.0%	4	80.0%	6.7%	80.0%	11	5	45.5%	6	54.5%
Average	38	26	69.1%	12	30.9%	21	15	74.0%	5	26.0%	59.2%	46.6%	6	4	59.4%	3	40.6%	24.7%	48.1%	17	11	62.4%	6	37.6%	
Doctorate	2013	53	41	77.4%	12	22.6%	11	9	81.8%	2	18.2%	22.0%	16.7%	4	3	75.0%	1	25.0%	33.3%	50.0%	38	26	68.4%	12	31.6%
	2014	37	31	83.8%	6	16.2%	6	4	66.7%	2	33.3%	12.9%	33.3%	6	4	66.7%	2	33.3%	100.0%	100.0%	44	29	65.9%	15	34.1%
	2015	37	32	86.5%	5	13.5%	4	3	75.0%	1	25.0%	9.4%	20.0%	2	1	50.0%	1	50.0%	33.3%	100.0%	44	27	61.4%	17	38.6%
	2016	22	17	77.3%	5	22.7%	2	2	100.0%	0	0.0%	11.8%	0.0%	1	1	100.0%	0	0.0%	50.0%	0.0%	39	23	59.0%	16	41.0%
	2017	29	21	72.4%	8	27.6%	7	5	71.4%	2	28.6%	23.8%	25.0%	3	3	100.0%	0	0.0%	60.0%	0.0%	39	25	64.1%	14	35.9%
Average	36	28	79.8%	7	20.2%	6	5	76.7%	1	23.3%	16.2%	19.4%	3	2	75.0%	1	25.0%	52.2%	57.1%	41	26	63.7%	15	36.3%	
Non-Degree & Campus Certificate	2013	0	0	0.0%	0	0.0%	0	0	0.0%	0	0.0%	0.0%	0.0%	0	0	0.0%	0	0.0%	0.0%	0.0%	0	0	0.0%	0	0.0%
	2014	0	0	0.0%	0	0.0%	0	0	0.0%	0	0.0%	0.0%	0.0%	0	0	0.0%	0	0.0%	0.0%	0.0%	0	0	0.0%	0	0.0%
	2015	0	0	0.0%	0	0.0%	0	0	0.0%	0	0.0%	0.0%	0.0%	0	0	0.0%	0	0.0%	0.0%	0.0%	0	0	0.0%	0	0.0%
	2016	0	0	0.0%	0	0.0%	0	0	0.0%	0	0.0%	0.0%	0.0%	0	0	0.0%	0	0.0%	0.0%	0.0%	0	0	0.0%	0	0.0%
	2017	0	0	0.0%	0	0.0%	0	0	0.0%	0	0.0%	0.0%	0.0%	0	0	0.0%	0	0.0%	0.0%	0.0%	0	0	0.0%	0	0.0%
Average	0	0	0.0%	0	0.0%	0	0	0.0%	0	0.0%	0.0%	0.0%	0	0	0.0%	0	0.0%	0.0%	0.0%	0	0	0.0%	0	0.0%	

Note: URM stands for Under-Represented Minority and includes American Indian or Alaska Native; Black or African-American; Hispanic / Latino race/ethnicity groups

Applications - Total by Race/Ethnicity

Criminal Justice

Fall 2013 - Fall 2017

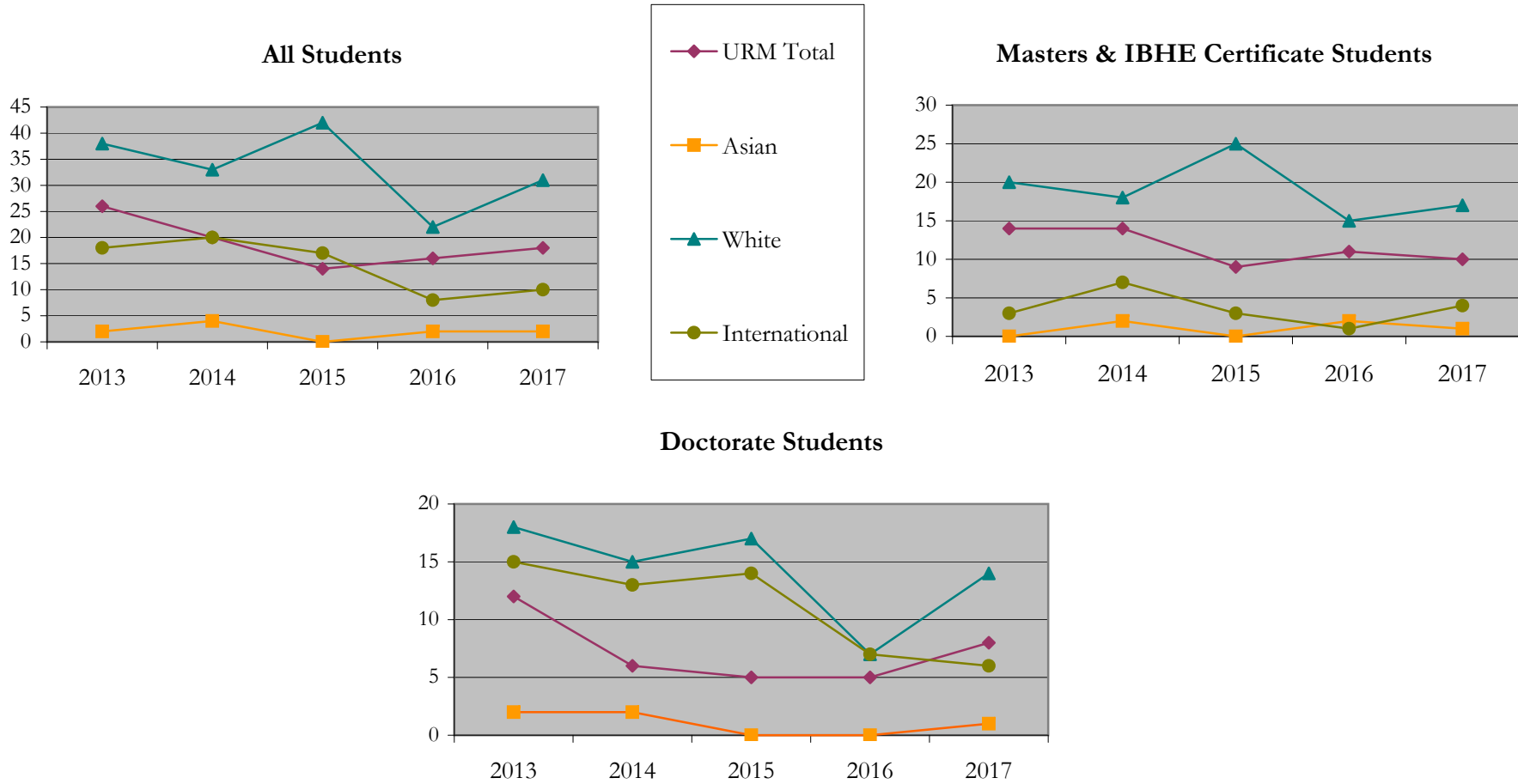
		Total	Under Represented Minorities (URM)																Not Reported		
			American Indian or Alaska Native		Black or African American		Hispanic / Latino		URM Total		Asian		Native Hawaiian or Pacific Islander		White		Two or More Races			International	
			Count	%	Count	%	Count	%	Count	%	Count	%	Count	%	Count	%	Count	%		Count	%
All	2013	91	1	1.1	14	15.4	11	12.1	26	28.6	2	2.2	0	0.0	38	41.8	2	2.2	18	19.8	5
	2014	84	0	0.0	11	13.1	9	10.7	20	23.8	4	4.8	0	0.0	33	39.3	4	4.8	20	23.8	3
	2015	74	1	1.4	5	6.8	8	10.8	14	18.9	0	0.0	0	0.0	42	56.8	1	1.4	17	23.0	0
	2016	52	0	0.0	7	13.5	9	17.3	16	30.8	2	3.8	0	0.0	22	42.3	4	7.7	8	15.4	0
	2017	65	0	0.0	7	10.8	11	16.9	18	27.7	2	3.1	0	0.0	31	47.7	2	3.1	10	15.4	2
Masters & IBHE Certificate	2013	38	1	2.6	10	26.3	3	7.9	14	36.8	0	0.0	0	0.0	20	52.6	1	2.6	3	7.9	0
	2014	47	0	0.0	8	17.0	6	12.8	14	29.8	2	4.3	0	0.0	18	38.3	3	6.4	7	14.9	3
	2015	37	1	2.7	2	5.4	6	16.2	9	24.3	0	0.0	0	0.0	25	67.6	0	0.0	3	8.1	0
	2016	30	0	0.0	5	16.7	6	20.0	11	36.7	2	6.7	0	0.0	15	50.0	1	3.3	1	3.3	0
	2017	36	0	0.0	5	13.9	5	13.9	10	27.8	1	2.8	0	0.0	17	47.2	2	5.6	4	11.1	2
Doctorate	2013	53	0	0.0	4	7.5	8	15.1	12	22.6	2	3.8	0	0.0	18	34.0	1	1.9	15	28.3	5
	2014	37	0	0.0	3	8.1	3	8.1	6	16.2	2	5.4	0	0.0	15	40.5	1	2.7	13	35.1	0
	2015	37	0	0.0	3	8.1	2	5.4	5	13.5	0	0.0	0	0.0	17	45.9	1	2.7	14	37.8	0
	2016	22	0	0.0	2	9.1	3	13.6	5	22.7	0	0.0	0	0.0	7	31.8	3	13.6	7	31.8	0
	2017	29	0	0.0	2	6.9	6	20.7	8	27.6	1	3.4	0	0.0	14	48.3	0	0.0	6	20.7	0
Non-Degree & Campus Certificate	2013	0	0	0.0	0	0.0	0	0.0	0	0.0	0	0.0	0	0.0	0	0.0	0	0.0	0	0.0	0
	2014	0	0	0.0	0	0.0	0	0.0	0	0.0	0	0.0	0	0.0	0	0.0	0	0.0	0	0.0	0
	2015	0	0	0.0	0	0.0	0	0.0	0	0.0	0	0.0	0	0.0	0	0.0	0	0.0	0	0.0	0
	2016	0	0	0.0	0	0.0	0	0.0	0	0.0	0	0.0	0	0.0	0	0.0	0	0.0	0	0.0	0
	2017	0	0	0.0	0	0.0	0	0.0	0	0.0	0	0.0	0	0.0	0	0.0	0	0.0	0	0.0	0

Note: URM stands for Under-Represented Minority and includes American Indian or Alaska Native; Black or African-American; Hispanic / Latino race/ethnicity groups

Applications - Total by Race/Ethnicity

Criminal Justice

Fall 2013 - Fall 2017



Notes: 1) URM stands for Under-Represented Minority and includes American Indian or Alaska Native; Black or African-American; Hispanic / Latino race/ethnicity groups

2) Individual URM groups, Native Hawaiian Pacific Islander, Two or More Races, and Other race/ethnicity categories left off this charts due to relatively low numbers

Applications - Admitted

by Race/Ethnicity

Criminal Justice

Fall 2013 - Fall 2017

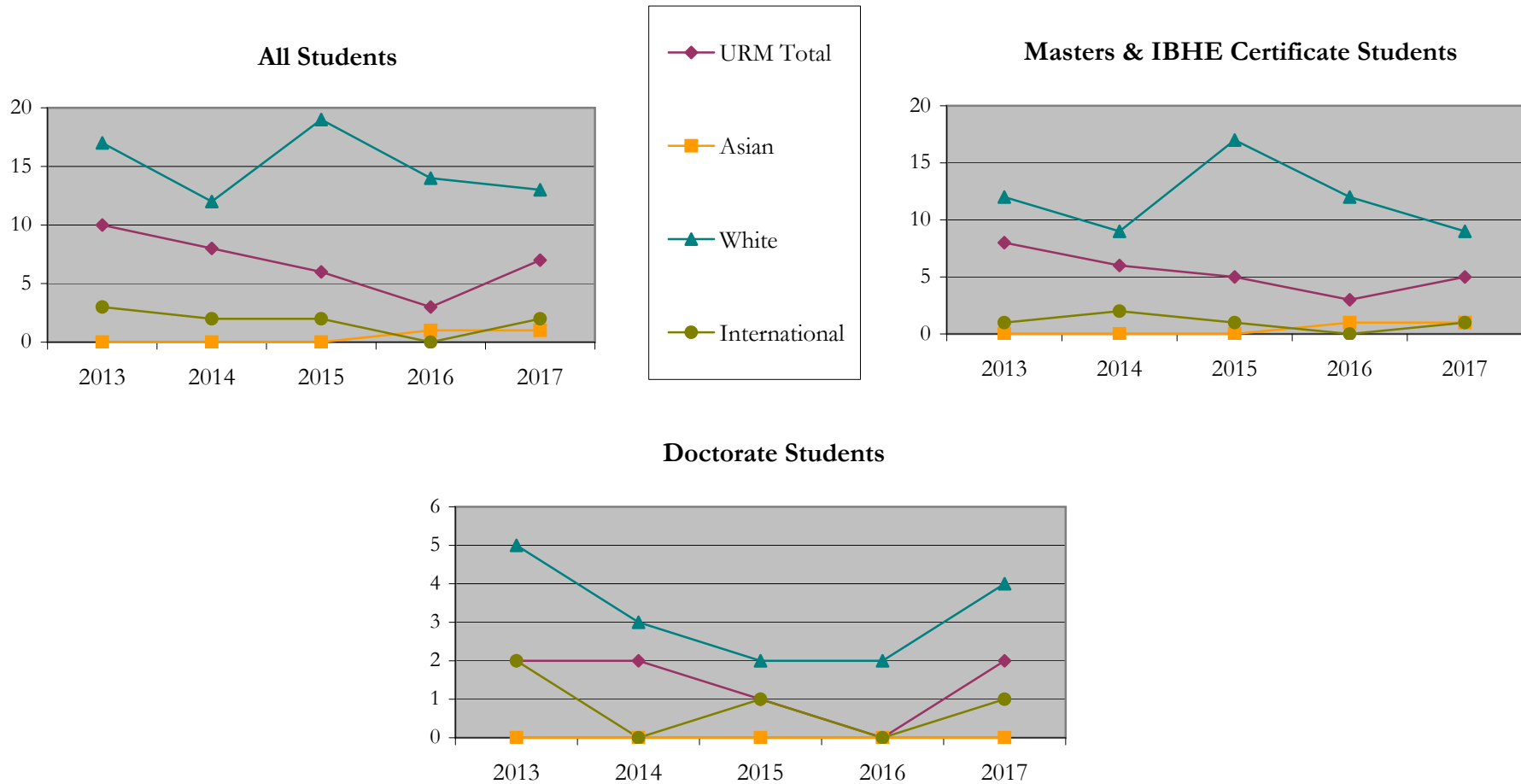
		Total	Under Represented Minorities (URM)								Asian		Native Hawaiian or Pacific Islander		White		Two or More Races		International		Not Reported
			American Indian or Alaska Native		Black or African American		Hispanic / Latino		URM Total												
			Count	%	Count	%	Count	%	Count	%											
All	2013	33	1	3.0	7	21.2	2	6.1	10	30.3	0	0.0	0	0.0	17	51.5	2	6.1	3	9.1	1
	2014	28	0	0.0	3	10.7	5	17.9	8	28.6	0	0.0	0	0.0	12	42.9	3	10.7	2	7.1	3
	2015	27	0	0.0	2	7.4	4	14.8	6	22.2	0	0.0	0	0.0	19	70.4	0	0.0	2	7.4	0
	2016	19	0	0.0	1	5.3	2	10.5	3	15.8	1	5.3	0	0.0	14	73.7	1	5.3	0	0.0	0
	2017	27	0	0.0	3	11.1	4	14.8	7	25.9	1	3.7	0	0.0	13	48.1	2	7.4	2	7.4	2
Masters & IBHE Certificate	2013	22	1	4.5	7	31.8	0	0.0	8	36.4	0	0.0	0	0.0	12	54.5	1	4.5	1	4.5	0
	2014	22	0	0.0	2	9.1	4	18.2	6	27.3	0	0.0	0	0.0	9	40.9	2	9.1	2	9.1	3
	2015	23	0	0.0	1	4.3	4	17.4	5	21.7	0	0.0	0	0.0	17	73.9	0	0.0	1	4.3	0
	2016	17	0	0.0	1	5.9	2	11.8	3	17.6	1	5.9	0	0.0	12	70.6	1	5.9	0	0.0	0
	2017	20	0	0.0	3	15.0	2	10.0	5	25.0	1	5.0	0	0.0	9	45.0	2	10.0	1	5.0	2
Doctorate	2013	11	0	0.0	0	0.0	2	18.2	2	18.2	0	0.0	0	0.0	5	45.5	1	9.1	2	18.2	1
	2014	6	0	0.0	1	16.7	1	16.7	2	33.3	0	0.0	0	0.0	3	50.0	1	16.7	0	0.0	0
	2015	4	0	0.0	1	25.0	0	0.0	1	25.0	0	0.0	0	0.0	2	50.0	0	0.0	1	25.0	0
	2016	2	0	0.0	0	0.0	0	0.0	0	0.0	0	0.0	0	0.0	2	100.0	0	0.0	0	0.0	0
	2017	7	0	0.0	0	0.0	2	28.6	2	28.6	0	0.0	0	0.0	4	57.1	0	0.0	1	14.3	0
Non-Degree & Campus Certificate	2013	0	0	0.0	0	0.0	0	0.0	0	0.0	0	0.0	0	0.0	0	0.0	0	0.0	0	0.0	0
	2014	0	0	0.0	0	0.0	0	0.0	0	0.0	0	0.0	0	0.0	0	0.0	0	0.0	0	0.0	0
	2015	0	0	0.0	0	0.0	0	0.0	0	0.0	0	0.0	0	0.0	0	0.0	0	0.0	0	0.0	0
	2016	0	0	0.0	0	0.0	0	0.0	0	0.0	0	0.0	0	0.0	0	0.0	0	0.0	0	0.0	0
	2017	0	0	0.0	0	0.0	0	0.0	0	0.0	0	0.0	0	0.0	0	0.0	0	0.0	0	0.0	0

Note: URM stands for Under-Represented Minority and includes American Indian or Alaska Native; Black or African-American; Hispanic / Latino race/ethnicity groups

Applications - Admitted by Race/Ethnicity

Criminal Justice

Fall 2013 - Fall 2017



Notes: 1) URM stands for Under-Represented Minority and includes American Indian or Alaska Native; Black or African-American; Hispanic / Latino race/ethnicity groups

2) Individual URM groups, Native Hawaiian Pacific Islander, Two or More Races, and Other race/ethnicity categories left off this charts due to relatively low numbers

**Enrollment - New
by Race/Ethnicity**

Criminal Justice

Fall 2013 - Fall 2017

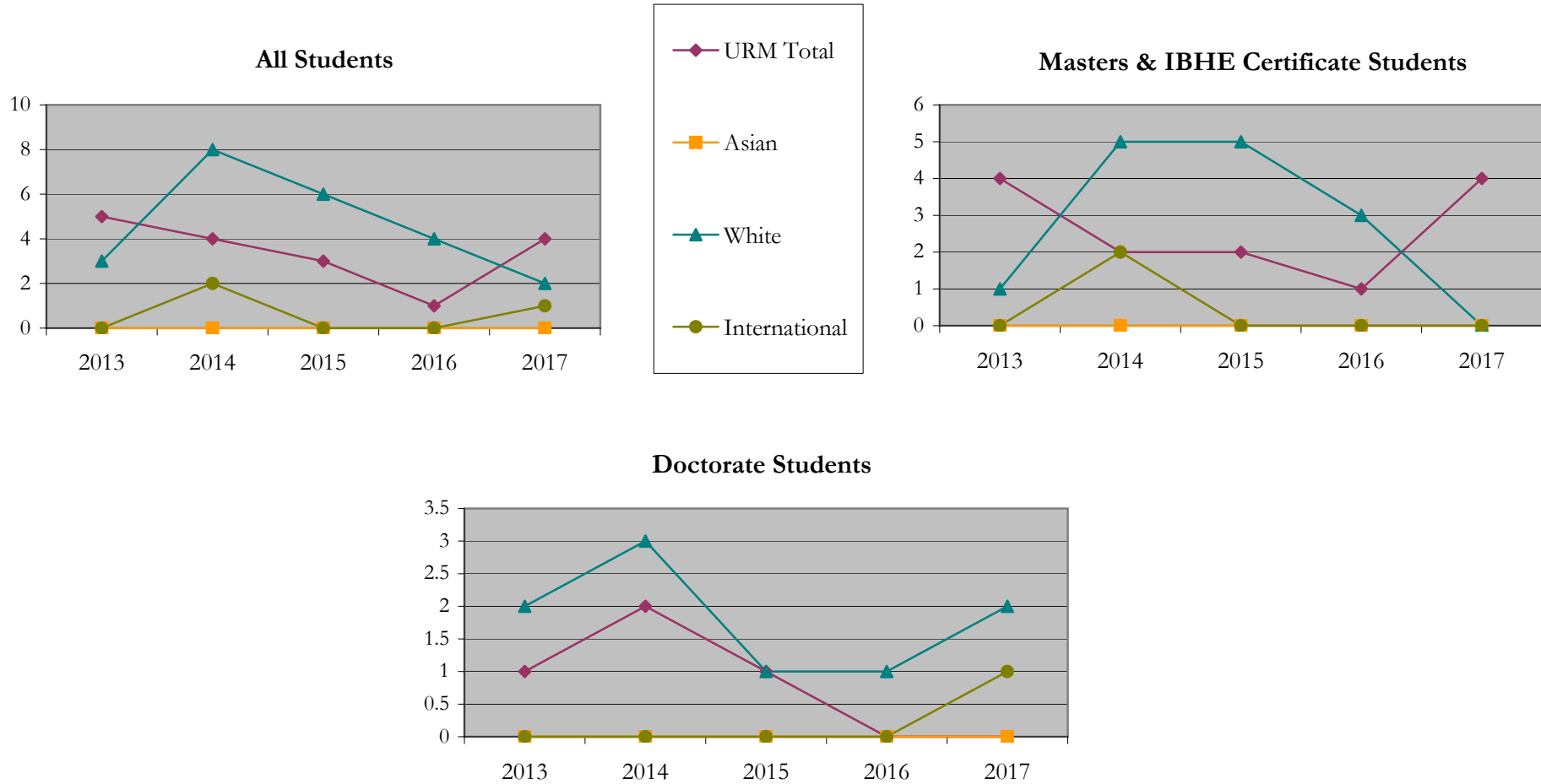
		Total	Under Represented Minorities (URM)								Asian		Native Hawaiian or Pacific Islander		White		Two or More Races		International		Not Reported
			American Indian or Alaska Native		Black or African American		Hispanic / Latino		URM Total												
			Count	%	Count	%	Count	%	Count	%											
All	2013	9	0	0.0	4	44.4	1	11.1	5	55.6	0	0.0	0	0.0	3	33.3	1	11.1	0	0.0	0
	2014	16	0	0.0	3	18.8	1	6.3	4	25.0	0	0.0	0	0.0	8	50.0	2	12.5	2	12.5	0
	2015	9	0	0.0	1	11.1	2	22.2	3	33.3	0	0.0	0	0.0	6	66.7	0	0.0	0	0.0	0
	2016	6	0	0.0	0	0.0	1	16.7	1	16.7	0	0.0	0	0.0	4	66.7	1	16.7	0	0.0	0
	2017	8	0	0.0	3	37.5	1	12.5	4	50.0	0	0.0	0	0.0	2	25.0	0	0.0	1	12.5	1
Masters & IBHE Certificate	2013	5	0	0.0	4	80.0	0	0.0	4	80.0	0	0.0	0	0.0	1	20.0	0	0.0	0	0.0	0
	2014	10	0	0.0	2	20.0	0	0.0	2	20.0	0	0.0	0	0.0	5	50.0	1	10.0	2	20.0	0
	2015	7	0	0.0	0	0.0	2	28.6	2	28.6	0	0.0	0	0.0	5	71.4	0	0.0	0	0.0	0
	2016	5	0	0.0	0	0.0	1	20.0	1	20.0	0	0.0	0	0.0	3	60.0	1	20.0	0	0.0	0
	2017	5	0	0.0	3	60.0	1	20.0	4	80.0	0	0.0	0	0.0	0	0.0	0	0.0	0	0.0	1
Doctorate	2013	4	0	0.0	0	0.0	1	25.0	1	25.0	0	0.0	0	0.0	2	50.0	1	25.0	0	0.0	0
	2014	6	0	0.0	1	16.7	1	16.7	2	33.3	0	0.0	0	0.0	3	50.0	1	16.7	0	0.0	0
	2015	2	0	0.0	1	50.0	0	0.0	1	50.0	0	0.0	0	0.0	1	50.0	0	0.0	0	0.0	0
	2016	1	0	0.0	0	0.0	0	0.0	0	0.0	0	0.0	0	0.0	1	100.0	0	0.0	0	0.0	0
	2017	3	0	0.0	0	0.0	0	0.0	0	0.0	0	0.0	0	0.0	2	66.7	0	0.0	1	33.3	0
Non-Degree & Campus Certificate	2013	0	0	0.0	0	0.0	0	0.0	0	0.0	0	0.0	0	0.0	0	0.0	0	0.0	0	0.0	0
	2014	0	0	0.0	0	0.0	0	0.0	0	0.0	0	0.0	0	0.0	0	0.0	0	0.0	0	0.0	0
	2015	0	0	0.0	0	0.0	0	0.0	0	0.0	0	0.0	0	0.0	0	0.0	0	0.0	0	0.0	0
	2016	0	0	0.0	0	0.0	0	0.0	0	0.0	0	0.0	0	0.0	0	0.0	0	0.0	0	0.0	0
	2017	0	0	0.0	0	0.0	0	0.0	0	0.0	0	0.0	0	0.0	0	0.0	0	0.0	0	0.0	0

Note: URM stands for Under-Represented Minority and includes American Indian or Alaska Native; Black or African-American; Hispanic / Latino race/ethnicity groups

Enrollment - New by Race/Ethnicity

Criminal Justice

Fall 2013 - Fall 2017



Notes: 1) URM stands for Under-Represented Minority and includes American Indian or Alaska Native; Black or African-American; Hispanic / Latino race/ethnicity groups

2) Individual URM groups, Native Hawaiian Pacific Islander, Two or More Races, and Other race/ethnicity categories left off this charts due to relatively low numbers

**Enrollment - Total
by Race/Ethnicity**

Criminal Justice

Fall 2013 - Fall 2017

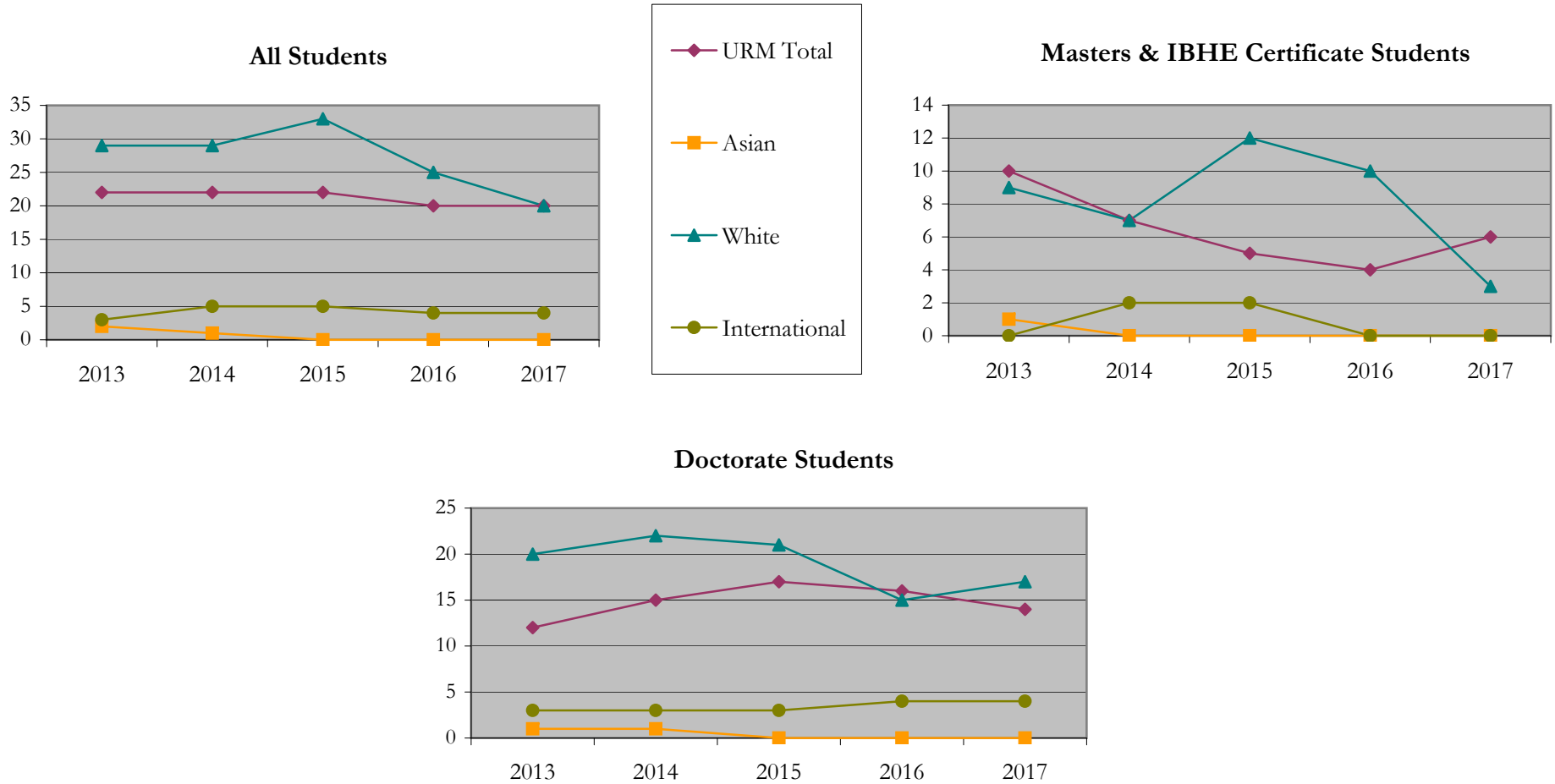
		Total	Under Represented Minorities (URM)										Asian		Native Hawaiian or Pacific Islander		White		Two or More Races		International		Not Reported
			American Indian or Alaska Native		Black or African American		Hispanic / Latino		URM Total		Count	%	Count	%	Count	%	Count	%	Count	%	Count	%	Count
			Count	%	Count	%	Count	%	Count	%													
All	2013	59	0	0.0	12	20.3	10	16.9	22	37.3	2	3.4	2	3.4	29	49.2	1	1.7	3	5.1	0		
	2014	62	0	0.0	13	21.0	9	14.5	22	35.5	1	1.6	2	3.2	29	46.8	3	4.8	5	8.1	0		
	2015	64	0	0.0	11	17.2	11	17.2	22	34.4	0	0.0	2	3.1	33	51.6	2	3.1	5	7.8	0		
	2016	54	0	0.0	8	14.8	12	22.2	20	37.0	0	0.0	1	1.9	25	46.3	4	7.4	4	7.4	0		
	2017	50	0	0.0	11	22.0	9	18.0	20	40.0	0	0.0	1	2.0	20	40.0	4	8.0	4	8.0	1		
Masters & IBHE Certificate	2013	21	0	0.0	6	28.6	4	19.0	10	47.6	1	4.8	1	4.8	9	42.9	0	0.0	0	0.0	0		
	2014	18	0	0.0	6	33.3	1	5.6	7	38.9	0	0.0	1	5.6	7	38.9	1	5.6	2	11.1	0		
	2015	20	0	0.0	2	10.0	3	15.0	5	25.0	0	0.0	1	5.0	12	60.0	0	0.0	2	10.0	0		
	2016	15	0	0.0	0	0.0	4	26.7	4	26.7	0	0.0	0	0.0	10	66.7	1	6.7	0	0.0	0		
	2017	11	0	0.0	3	27.3	3	27.3	6	54.5	0	0.0	0	0.0	3	27.3	1	9.1	0	0.0	1		
Doctorate	2013	38	0	0.0	6	15.8	6	15.8	12	31.6	1	2.6	1	2.6	20	52.6	1	2.6	3	7.9	0		
	2014	44	0	0.0	7	15.9	8	18.2	15	34.1	1	2.3	1	2.3	22	50.0	2	4.5	3	6.8	0		
	2015	44	0	0.0	9	20.5	8	18.2	17	38.6	0	0.0	1	2.3	21	47.7	2	4.5	3	6.8	0		
	2016	39	0	0.0	8	20.5	8	20.5	16	41.0	0	0.0	1	2.6	15	38.5	3	7.7	4	10.3	0		
	2017	39	0	0.0	8	20.5	6	15.4	14	35.9	0	0.0	1	2.6	17	43.6	3	7.7	4	10.3	0		
Non-Degree & Campus Certificate	2013	0	0	0.0	0	0.0	0	0.0	0	0.0	0	0.0	0	0.0	0	0.0	0	0.0	0	0.0	0		
	2014	0	0	0.0	0	0.0	0	0.0	0	0.0	0	0.0	0	0.0	0	0.0	0	0.0	0	0.0	0		
	2015	0	0	0.0	0	0.0	0	0.0	0	0.0	0	0.0	0	0.0	0	0.0	0	0.0	0	0.0	0		
	2016	0	0	0.0	0	0.0	0	0.0	0	0.0	0	0.0	0	0.0	0	0.0	0	0.0	0	0.0	0		
	2017	0	0	0.0	0	0.0	0	0.0	0	0.0	0	0.0	0	0.0	0	0.0	0	0.0	0	0.0	0		

Note: URM stands for Under-Represented Minority and includes American Indian or Alaska Native; Black or African-American; Hispanic / Latino race/ethnicity groups

Enrollment - Total by Race/Ethnicity

Criminal Justice

Fall 2013 - Fall 2017



Notes: 1) URM stands for Under-Represented Minority and includes American Indian or Alaska Native; Black or African-American; Hispanic / Latino race/ethnicity groups

2) Individual URM groups, Native Hawaiian Pacific Islander, Two or More Races, and Other race/ethnicity categories left off this charts due to relatively low numbers

Enrollment
by Student Type, Enrollment Time, and Gender

Criminal Justice

Fall 2013 - Fall 2017

		Total	New		Continuing		Male		Female		Gender Not Reported	Part-time		Full-time	
			Count	%	Count	%	Count	%	Count	%		Count	%	Count	%
All	2013	59	9	15.3	50	84.7	22	37.3	37	62.7	0	17	28.8	42	71.2
	2014	62	16	25.8	46	74.2	20	32.3	42	67.7	0	16	25.8	46	74.2
	2015	64	9	14.1	55	85.9	23	35.9	41	64.1	0	17	26.6	47	73.4
	2016	54	6	11.1	48	88.9	15	27.8	39	72.2	0	23	42.6	31	57.4
	2017	50	8	16.0	42	84.0	15	30.0	35	70.0	0	20	40.0	30	60.0
Masters & IBHE Certificate	2013	21	5	23.8	16	76.2	7	33.3	14	66.7	0	4	19.0	17	81.0
	2014	18	10	55.6	8	44.4	5	27.8	13	72.2	0	1	5.6	17	94.4
	2015	20	7	35.0	13	65.0	9	45.0	11	55.0	0	1	5.0	19	95.0
	2016	15	5	33.3	10	66.7	4	26.7	11	73.3	0	6	40.0	9	60.0
	2017	11	5	45.5	6	54.5	4	36.4	7	63.6	0	5	45.5	6	54.5
Doctorate	2013	38	4	10.5	34	89.5	15	39.5	23	60.5	0	13	34.2	25	65.8
	2014	44	6	13.6	38	86.4	15	34.1	29	65.9	0	15	34.1	29	65.9
	2015	44	2	4.5	42	95.5	14	31.8	30	68.2	0	16	36.4	28	63.6
	2016	39	1	2.6	38	97.4	11	28.2	28	71.8	0	17	43.6	22	56.4
	2017	39	3	7.7	36	92.3	11	28.2	28	71.8	0	15	38.5	24	61.5
Non-Degree & Campus Certificate	2013	0	0	0.0	0	0.0	0	0.0	0	0.0	0	0	0.0	0	0.0
	2014	0	0	0.0	0	0.0	0	0.0	0	0.0	0	0	0.0	0	0.0
	2015	0	0	0.0	0	0.0	0	0.0	0	0.0	0	0	0.0	0	0.0
	2016	0	0	0.0	0	0.0	0	0.0	0	0.0	0	0	0.0	0	0.0
	2017	0	0	0.0	0	0.0	0	0.0	0	0.0	0	0	0.0	0	0.0

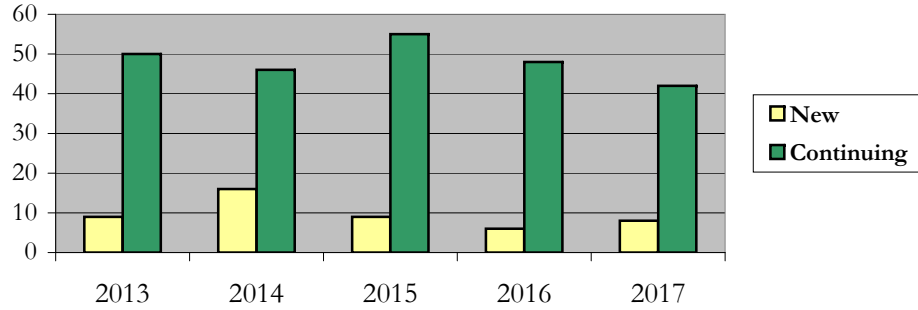
Enrollment

by Student Type, Enrollment Time, and Gender (All Students)

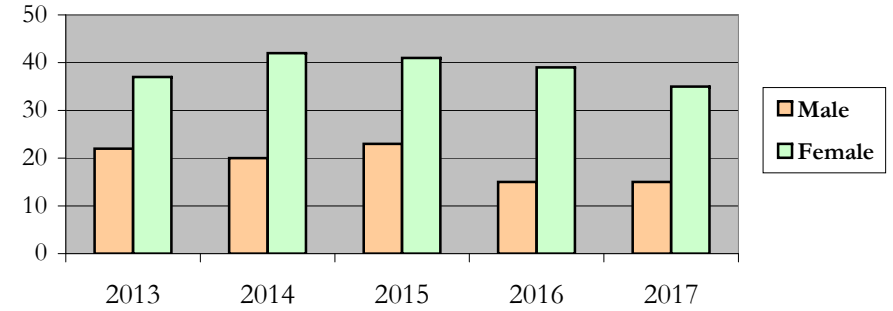
Criminal Justice

Fall 2013 - Fall 2017

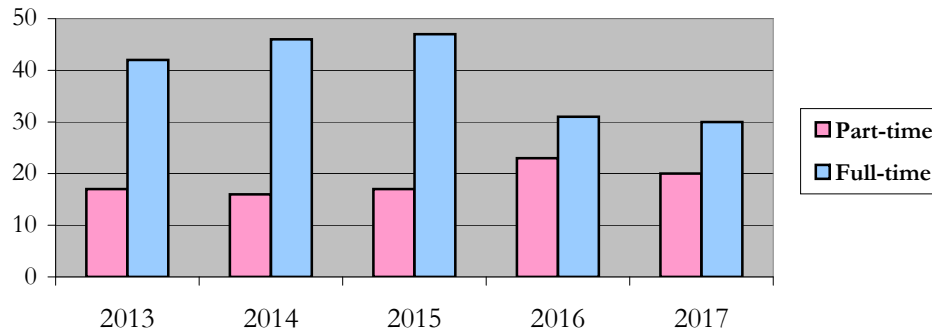
New and Continuing Enrollment



Enrollment by Gender



Enrollment by Student Enrollment Time

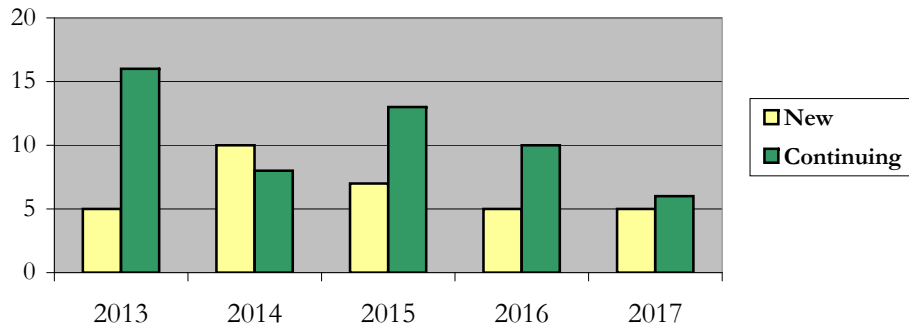


Enrollment
by Student Type, Enrollment Time, and Gender (Master's Students)

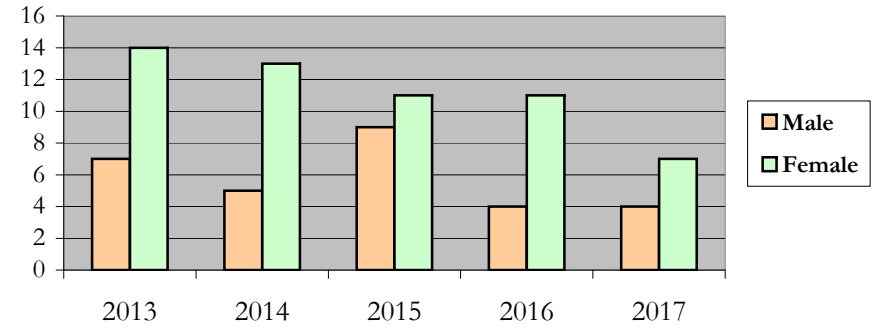
Criminal Justice

Fall 2013 - Fall 2017

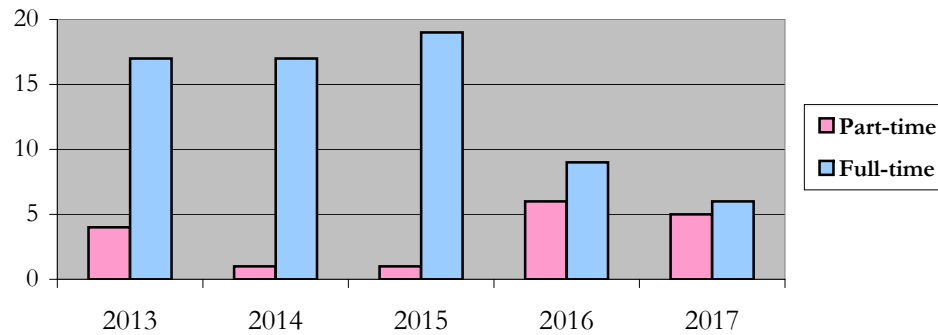
New and Continuing Enrollment



Enrollment by Gender



Enrollment by Student Enrollment Time

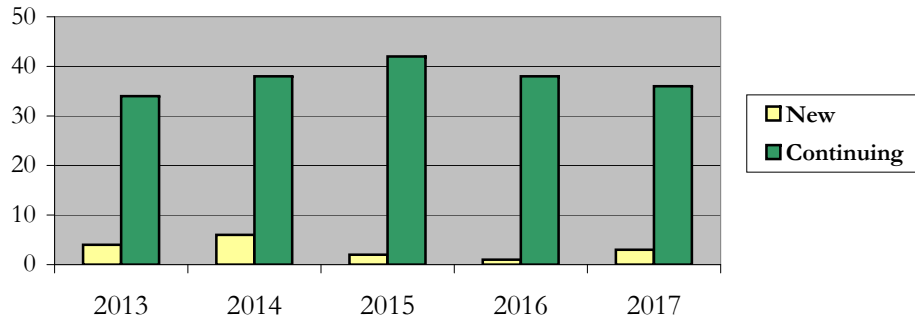


Enrollment
by Student Type, Enrollment Time, and Gender (Doctorate Students)

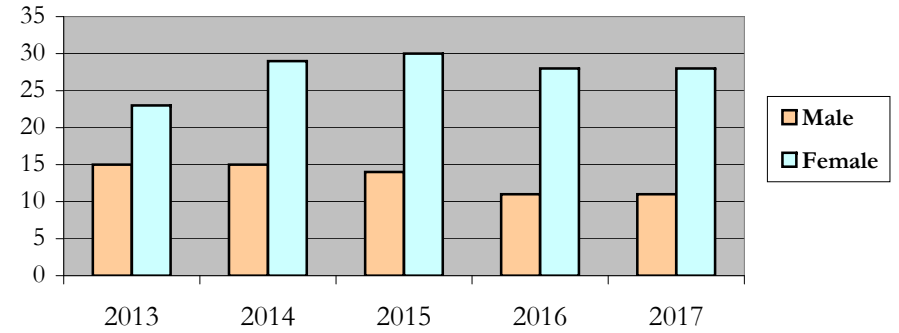
Criminal Justice

Fall 2013 - Fall 2017

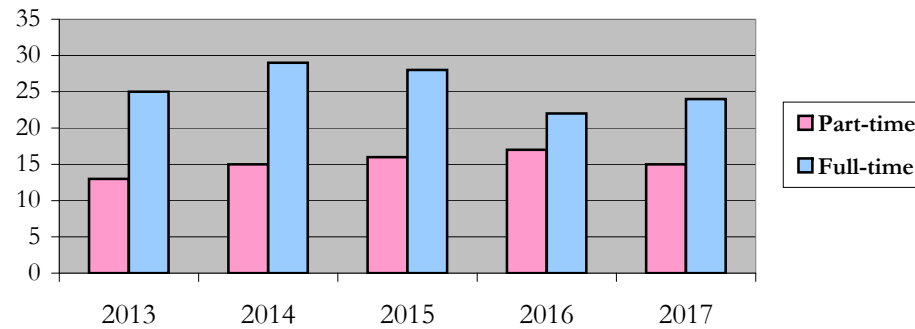
New and Continuing Enrollment



Enrollment by Gender



Enrollment by Student Enrollment Time



Degrees Conferred by Race/Ethnicity

Criminal Justice

Fall 2013 - Fall 2017

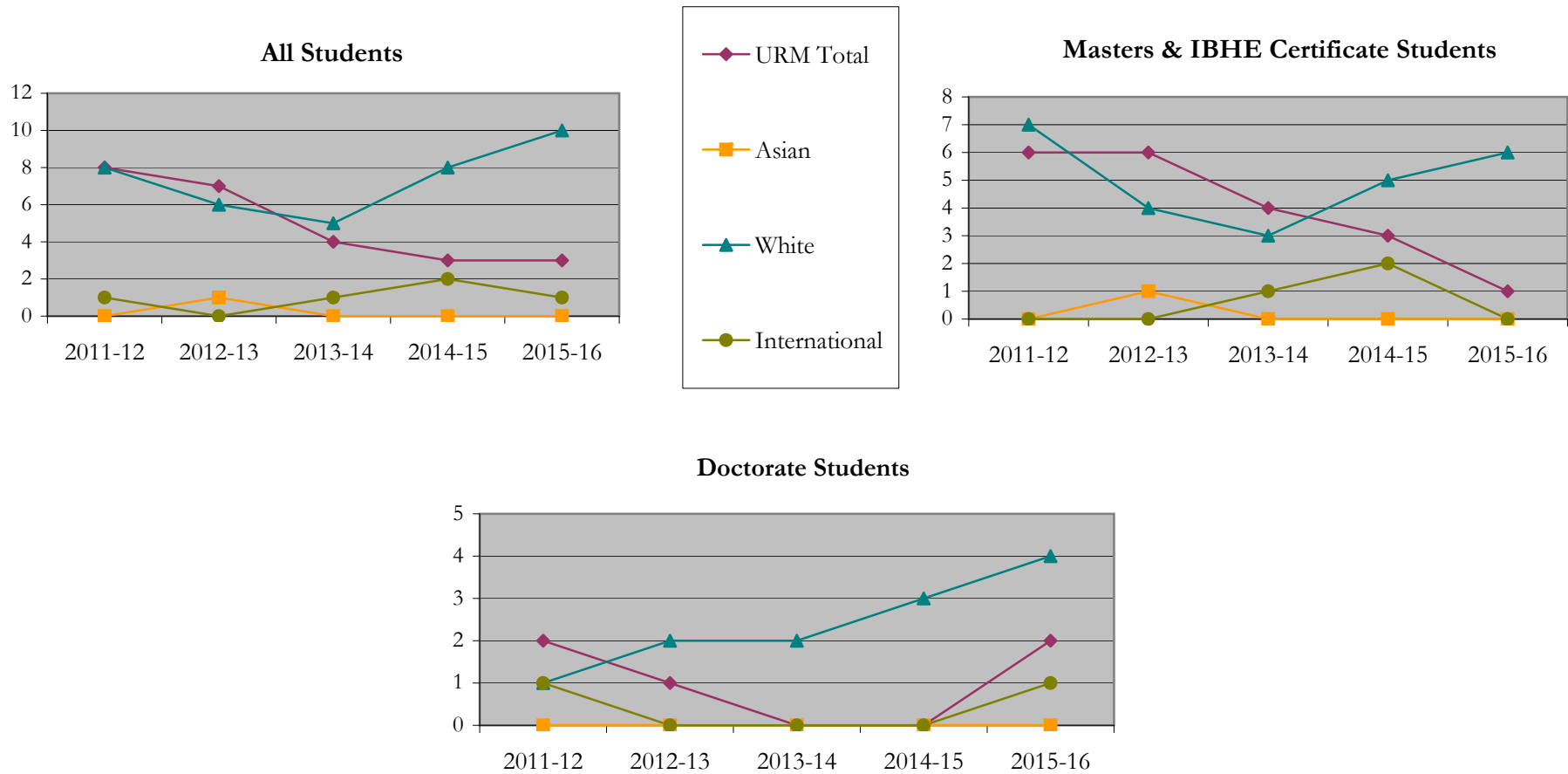
		Total	Under Represented Minorities (URM)								Asian	Native Hawaiian or Pacific Islander	White	Two or More Races	International	Not Reported					
			American Indian or Alaska Native		Black or African American		Hispanic / Latino		URM Total												
			Count	%	Count	%	Count	%	Count	%							Count	%	Count	%	Count
All	2012 - 13	19	0	0.0	4	21.1	4	21.1	8	42.1	0	0.0	1	5.3	8	42.1	1	5.3	1	5.3	0
	2013 - 14	14	0	0.0	3	21.4	4	28.6	7	50.0	1	7.1	0	0.0	6	42.9	0	0.0	0	0.0	0
	2014 - 15	11	0	0.0	3	27.3	1	9.1	4	36.4	0	0.0	0	0.0	5	45.5	1	9.1	1	9.1	0
	2015 - 16	14	0	0.0	2	14.3	1	7.1	3	21.4	0	0.0	0	0.0	8	57.1	1	7.1	2	14.3	0
	2016 - 17	14	0	0.0	1	7.1	2	14.3	3	21.4	0	0.0	0	0.0	10	71.4	0	0.0	1	7.1	0
Masters & IBHE Certificate	2012 - 13	15	0	0.0	2	13.3	4	26.7	6	40.0	0	0.0	1	6.7	7	46.7	1	6.7	0	0.0	0
	2013 - 14	11	0	0.0	2	18.2	4	36.4	6	54.5	1	9.1	0	0.0	4	36.4	0	0.0	0	0.0	0
	2014 - 15	9	0	0.0	3	33.3	1	11.1	4	44.4	0	0.0	0	0.0	3	33.3	1	11.1	1	11.1	0
	2015 - 16	11	0	0.0	2	18.2	1	9.1	3	27.3	0	0.0	0	0.0	5	45.5	1	9.1	2	18.2	0
	2016 - 17	7	0	0.0	0	0.0	1	14.3	1	14.3	0	0.0	0	0.0	6	85.7	0	0.0	0	0.0	0
Doctorate	2012 - 13	4	0	0.0	2	50.0	0	0.0	2	50.0	0	0.0	0	0.0	1	25.0	0	0.0	1	25.0	0
	2013 - 14	3	0	0.0	1	33.3	0	0.0	1	33.3	0	0.0	0	0.0	2	66.7	0	0.0	0	0.0	0
	2014 - 15	2	0	0.0	0	0.0	0	0.0	0	0.0	0	0.0	0	0.0	2	100.0	0	0.0	0	0.0	0
	2015 - 16	3	0	0.0	0	0.0	0	0.0	0	0.0	0	0.0	0	0.0	3	100.0	0	0.0	0	0.0	0
	2016 - 17	7	0	0.0	1	14.3	1	14.3	2	28.6	0	0.0	0	0.0	4	57.1	0	0.0	1	14.3	0
Non-Degree & Campus Certificate	2012 - 13	0	0	0.0	0	0.0	0	0.0	0	0.0	0	0.0	0	0.0	0	0.0	0	0.0	0	0.0	0
	2013 - 14	0	0	0.0	0	0.0	0	0.0	0	0.0	0	0.0	0	0.0	0	0.0	0	0.0	0	0.0	0
	2014 - 15	0	0	0.0	0	0.0	0	0.0	0	0.0	0	0.0	0	0.0	0	0.0	0	0.0	0	0.0	0
	2015 - 16	0	0	0.0	0	0.0	0	0.0	0	0.0	0	0.0	0	0.0	0	0.0	0	0.0	0	0.0	0
	2016 - 17	0	0	0.0	0	0.0	0	0.0	0	0.0	0	0.0	0	0.0	0	0.0	0	0.0	0	0.0	0

Note: Each row represents a fiscal year, beginning with Summer term and ending with Spring.

Degrees Conferred by Race/Ethnicity

Criminal Justice

Fall 2013 - Fall 2017



Notes: 1) URM stands for Under-Represented Minority and includes American Indian or Alaska Native; Black or African-American; Hispanic / Latino race/ethnicity groups

2) Individual URM groups, Native Hawaiian Pacific Islander, Two or More Races, and Other race/ethnicity categories left off this charts due to relatively low numbers

Degrees Conferred

by Gender

Criminal Justice

Fall 2013 - Fall 2017

		Total	Male		Female		Not Reported
			Count	%	Count	%	
All	2012 - 13	19	6	31.6	13	68.4	0
	2013 - 14	14	7	50.0	7	50.0	0
	2014 - 15	11	3	27.3	8	72.7	0
	2015 - 16	14	7	50.0	7	50.0	0
	2016 - 17	14	6	42.9	8	57.1	0
Masters & IBHE Certificate	2012 - 13	15	4	26.7	11	73.3	0
	2013 - 14	11	5	45.5	6	54.5	0
	2014 - 15	9	3	33.3	6	66.7	0
	2015 - 16	11	4	36.4	7	63.6	0
	2016 - 17	7	3	42.9	4	57.1	0
Doctorate	2012 - 13	4	2	50.0	2	50.0	0
	2013 - 14	3	2	66.7	1	33.3	0
	2014 - 15	2	0	0.0	2	100.0	0
	2015 - 16	3	3	100.0	0	0.0	0
	2016 - 17	7	3	42.9	4	57.1	0
Campus Certificates	2012 - 13	0	0	0.0	0	0.0	0
	2013 - 14	0	0	0.0	0	0.0	0
	2014 - 15	0	0	0.0	0	0.0	0
	2015 - 16	0	0	0.0	0	0.0	0
	2016 - 17	0	0	0.0	0	0.0	0

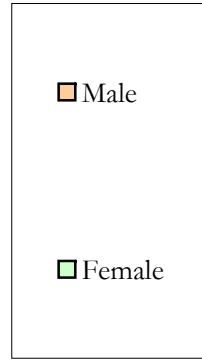
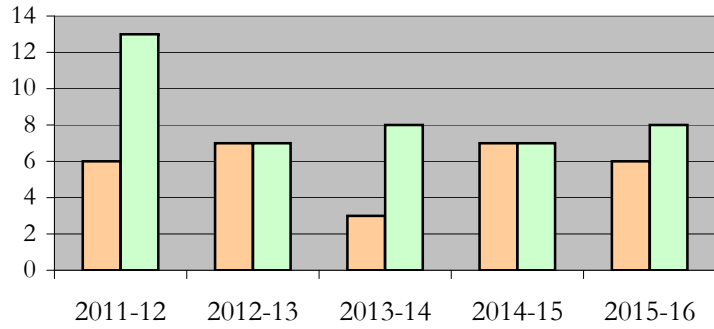
Note: Each row represents a fiscal year, beginning with Summer term and ending with Spring.

Degrees Conferred by Gender

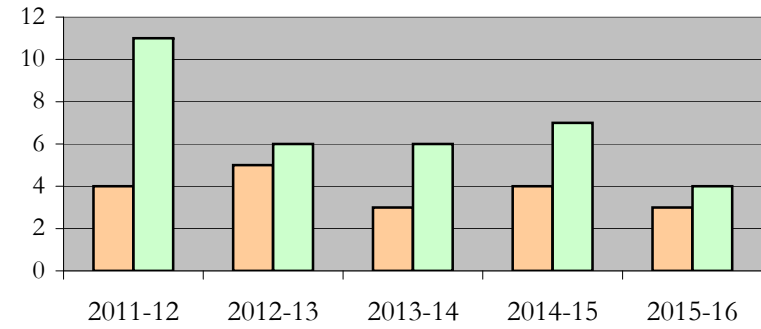
Criminal Justice

Fall 2013 - Fall 2017

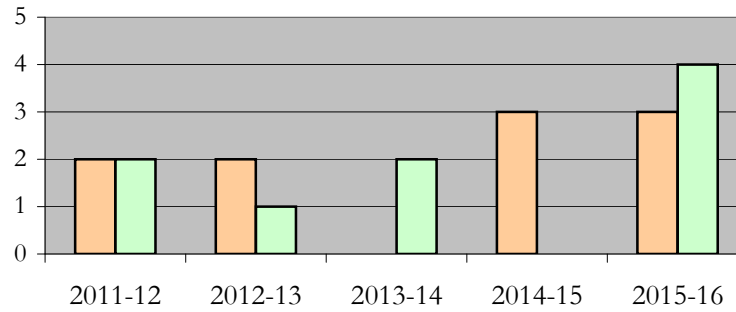
All Students



Masters & IBHE Certificate Students



Doctorate Students



Appendix A

Criminal Justice

Fall 2013 - Fall 2017

List of program codes included in this document

20FS5130PHD

20FS5130MA

Notes: 1) Program codes are sorted by alphabetical order in column-wise fashion

2) Program codes highlighted in yellow did not have applications, enrollment, nor degrees conferred in the covered period